

INSTEON®

Outdoor Wireless IP Camera



Owner's Manual

Product No. 75791

Rev. 08.27.12

CONTENTS

1. WELCOME	3
1.1 Features.....	3
1.2 What's in the Box?.....	3
1.3 Product views	4
1.4 Preparations Before Use	4
2. SOFTWARE OPERATION.....	7
2.1 IP Camera Tool	7
2.2 Camera Login	10
2.4 For Visitor	16
2.5 For Operator.....	17
2.6 For Administrator	18
3.1 Alias Settings.....	19
3.2 Date and Time Settings.....	19
3.3 User Settings	20
3.4 Multi-Device Settings.....	21
3.5 Basic Network Settings.....	25
3.6 Wireless LAN Settings	27
3.7 ADSL Settings.....	27
3.8 UPnP Settings	27
3.9 DDNS Service Settings.....	27
3.10 Mail Service Settings.....	28
3.11 FTP Service Settings.....	29
3.12 Alarm Service Settings	31
3.13 Upgrade Device Firmware.....	35
3.14 Backup and Restore Settings	35
3.15 Restore Factory Settings	35
3.16 Reboot Device	36
3.17 Log	36
3.18 Back.....	36
4. APPENDIX.....	37

4.1 Frequently Asked Questions37

4.2 Default Parameters40

4.4 Specifications43

5.0 OBTAINING TECHNICAL SUPPORT **44**

1. WELCOME

INSTEON® Outdoor Wireless IP Camera is a weatherproof high-resolution digital video camera that's easy to set up and remotely control. Featuring both wired and wireless network connectivity, night vision and a motion sensor, INSTEON Outdoor Wireless IP Camera is a complete security monitoring solution.

Remotely set up, access, control and manage the camera from anywhere via the embedded web page (supported by all versions of Internet Explorer, Safari, Firefox and Chrome) or home management software such as HouseLinc. Or, integrate it with the INSTEON SmartLinc Hub (sold separately) to use with the INSTEON iOS/Android smartphone and tablet app.

The camera transmits remote video on any IPV4 network; a high-quality video image can be transmitted at 30 FPS over LAN/WAN with MPEG hardware compression technology

1.1 Features

- Powerful high-speed video protocol processor
- 300 dpi high definition color CMOS Sensor
- 60 IR night vision LEDs with 98-foot (30 meter) range
- Optimized MPEG video compression for transmission
- Multi-level user and password management
- Embedded web server
- WiFi IEEE 802.11b/g/n with WEP/WPA/WPA2 encryption
- Supports Dynamic IP (DDNS) and UPnP LAN and Internet (ADSL, Cable Modem)
- Motion detection activates alarm
- Supports image snapshot
- HTTP/TCP/IP/UDP/STMP/DDNS/SNTP/DHCP/FTP network protocols supported
- Supports WEP/WPA/WPA2 encryption
- Supports Daylight Saving Time

1.2 What's in the Box?

- INSTEON® Outdoor Wireless IP Camera
- WiFi antenna
- DC power supply
- Quick Start Guide
- Setup CD (includes IP Camera Tool and Owner's Manual)
- Network cable
- Optional mounting bracket

1.3 Product views

1.3.1 Front View



1.3.2 Back View



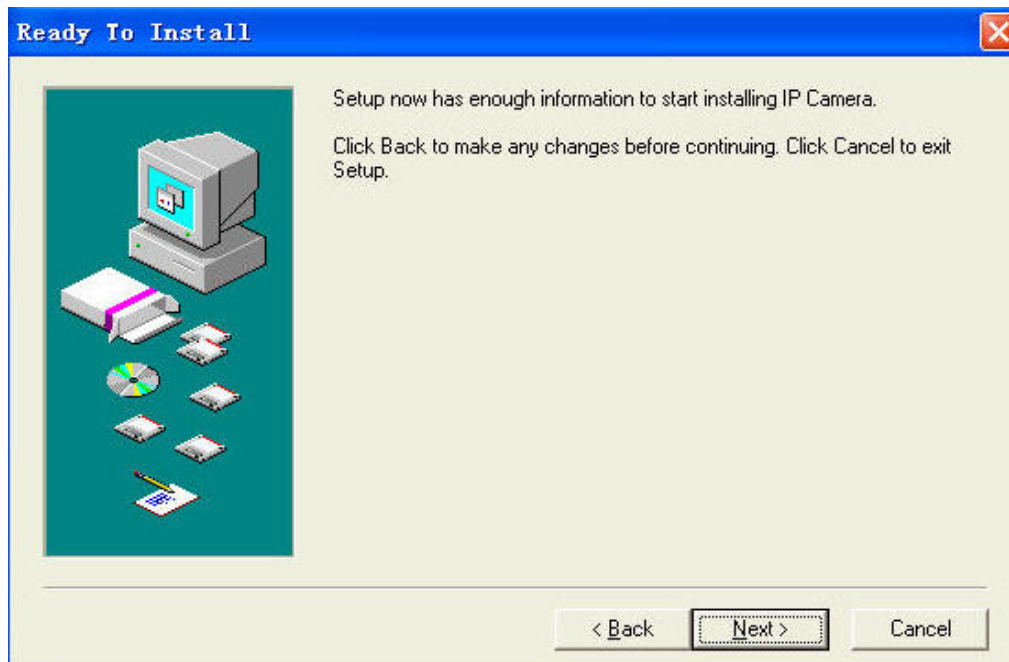
1.4 Preparations Before Use

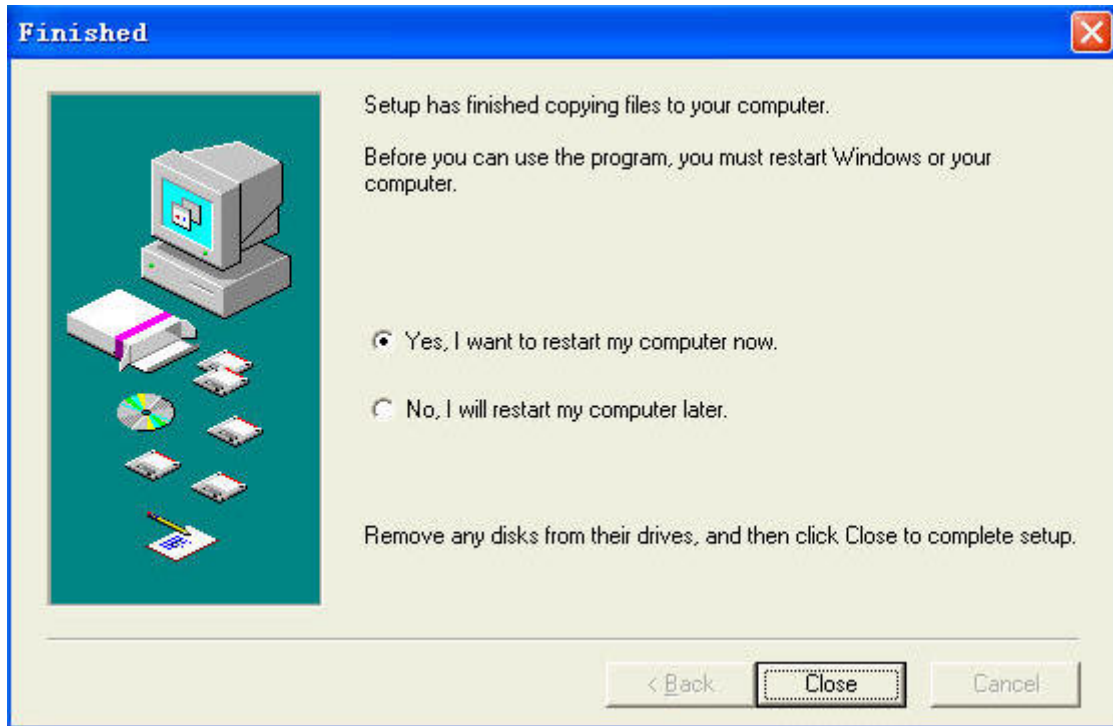
1.4.1 Software installation


- 1) Put the CD in the CD drive of your computer, then open CD
- 2) Double click **IPCamSetup.exe**. Follow the onscreen instructions to install camera software.



3) Click **Next** to complete the software installation





Upon installation completion, restart computer. The IP Camera Tool icon  will appear on the desktop automatically.

NOTE: If you use Windows 7 and there is no icon on desktop after installation of the IP Camera Tool, check the camera software installation path. For example, if the path reads C:\Windows\System32\IPCamera.exe, then edit the shortcut to C:\Windows\SysWOW64\IPCamera.exe.

CAUTION: Use only the power adapter attached with the product. Using an unauthorized power adapter may cause damage to your Camera. The IP Camera should be installed indoors only.

1.4.2 Hardware Preparation

Follow the steps below to set up your camera. Make sure to follow each step carefully to ensure that the camera operates properly.

- 1) Adjust the antenna on the back of the camera
- 2) Plug network cable into the camera and then into your Cable/DSL router
- 3) Plug power adapter into the camera and then into the power outlet

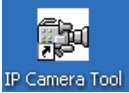
CAUTION: Make sure to only use the power adapter supplied with the camera. Using a non-approved power adapter may damage the camera.

- 4) The camera takes approximately 30 seconds to start up before it displays an IP address on the IP Camera Tool

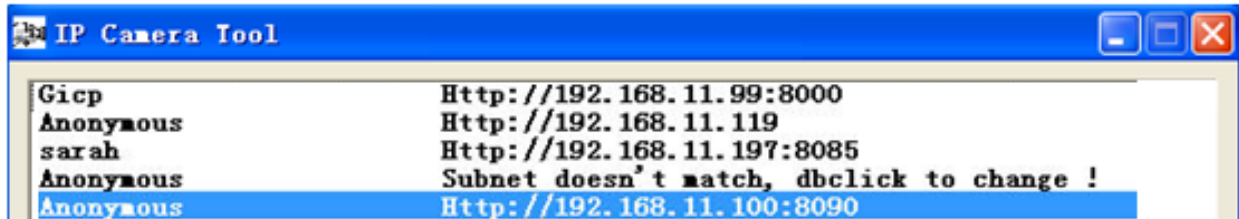
When the camera is powered and network cable is plugged in correctly, the small green network LED will turn on and the small yellow LAN port LED will flash. Network light will blink and power light will turn on.

2. SOFTWARE OPERATION

2.1 IP Camera Tool



When camera has been installed, open IP Camera Tool program on your computer. It will automatically begin searching for your camera over the LAN.



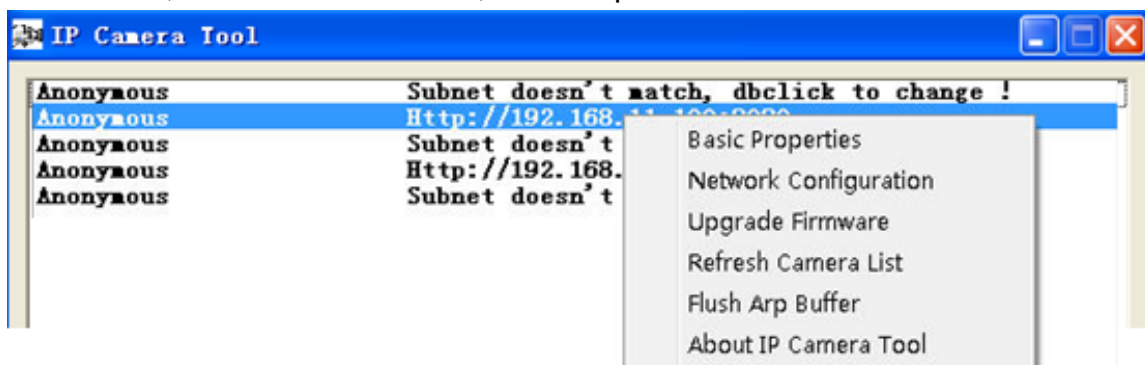
There are three possible scenarios:

- 1) If no camera is found on the LAN: after about one minute of searching, the field will display “IP Server not found” and automatically shut down IP Camera Tool program. Check if DHCP is enabled on your router, or disable MAC address filtering if on WiFi. Also, make sure that your firewall (if used) isn’t blocking access to the camera.
- 2) If cameras are found on the LAN: all of the cameras will be listed and the total number will be displayed in the result field (as shown above).
- 3) If cameras found on the LAN do not share the same subnet with the computer: a prompt will be displayed. Click right mouse button to choose “Network Configuration.” This will set the IP address of the camera to the same subnet as the LAN. You can also choose “Obtain IP from DHCP server” or “set a static IP for the camera.”

NOTE: If you could not find the camera’s IP on the IP Camera Tool, check that DHCP is enabled on your router, that your MAC address filter is disabled and that a firewall or antivirus software isn’t blocking the camera.

Setup Options

Right-click the IP camera to display six options: Basic Properties, Network Configuration, Upgrade Firmware, Refresh Camera List, Flush Arp Buffer and About IP Camera Tool:



- **Basic Properties:** Find device information such as device ID, the system firmware version and web UI version

If there are several cameras on the list, then choose Basic Properties to check the device ID and find that camera’s specific IP address. For example, if device ID is 00606E8C5058, it will have the same MAC address as found on the sticker on the bottom/back of the camera.

Each camera has its own MAC address. Sometimes, if a camera’s IP address is not found on the IP Camera Tool, the firewall may be blocking it. In that case, you can either add the MAC address to your router and give it a fixed IP, or add the MAC address as a trusted site. There are two MAC addresses: one is a wired MAC, and the other is a WiFi MAC.

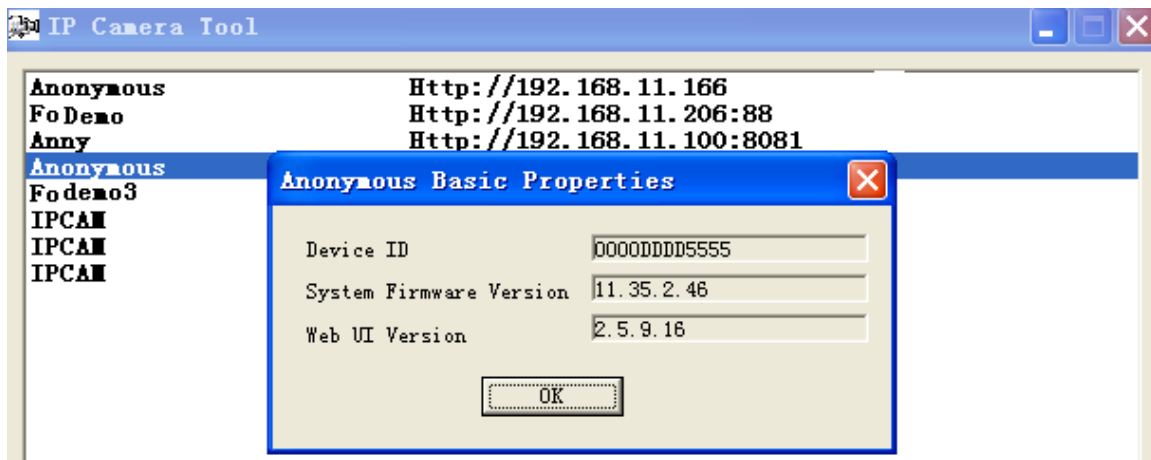
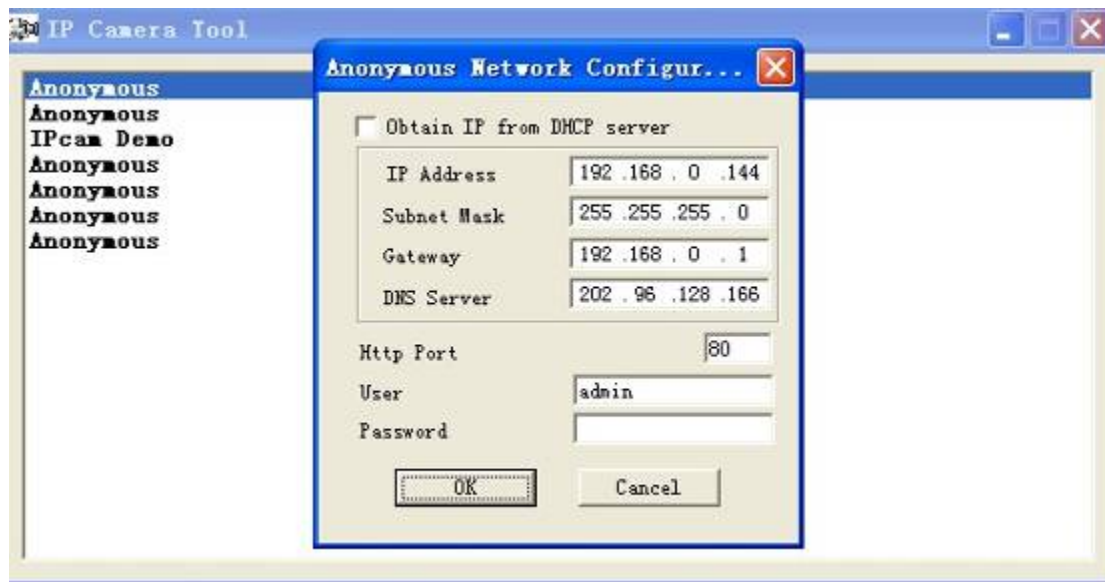


Figure 2.3

- **Network Configuration:** Configure network parameters



- **Obtain IP from DHCP server:** If checked, camera will obtain its IP address from your DHCP server



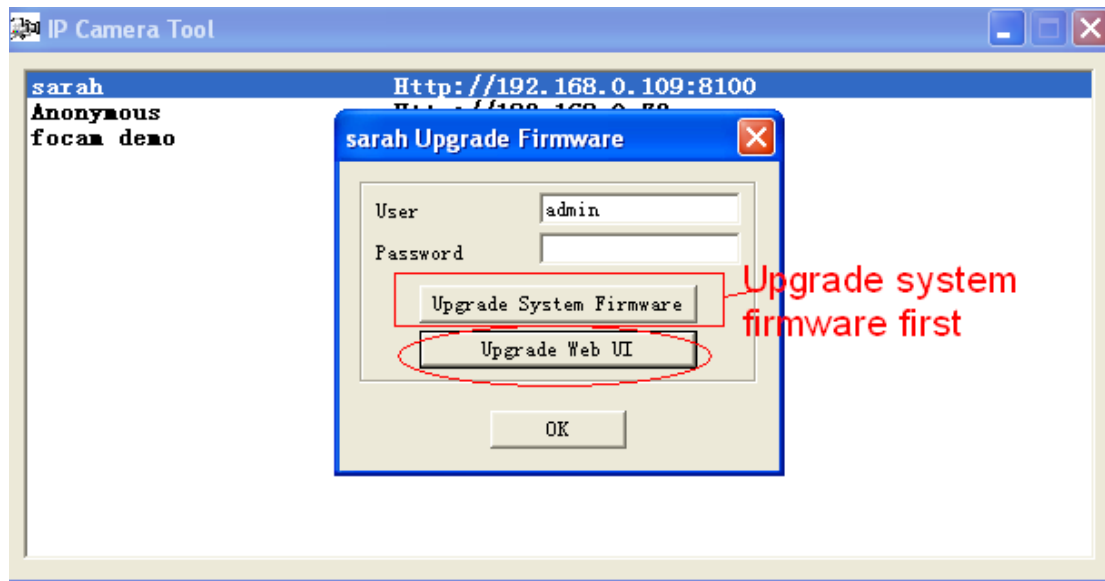
- **IP Address:** Fill in the assigned IP address. Make sure you are using an address that is on the same subnet as your PC.
- **Subnet Mask:** The default subnet mask of the equipment in our LAN is: 255.255.255.0. You can find the subnet mask in the basic information of your router or the locally-attached of your PC.
- **Gateway:** This is your internet gateway and usually the address of your router
- **DNS Servers:** Either use the DNS server address assigned by your ISP or one from a third party like Google (8.8.8.8) or OpenDNS (x.x.x.x)
- **HTTP Port:** The default port is 80. You can set another port number, such as port 8005, 85, 8100, etc. for port forwarding.
- **User:** Default administrator user name is “admin”
- **Password:** There is no default password

NOTE: If the prompt “Subnet doesn’t match, dbclick to change!” appears, enable DHCP and choose obtain IP from DHCP server or set camera’s IP address and gateway once again.

- **Upgrade Firmware:** Enter the correct user and password to upgrade system firmware and web UI. If you upgrade the camera, you must upgrade the system firmware first and then upgrade web UI or it may damage the camera. Download the firmware package for your specific camera before upgrade. Follow the upgrade documentation in the package carefully to upgrade. Check the readme.txt file first before you upgrade.

CAUTION: Don’t upgrade the firmware freely. Sometimes, your camera may be damaged if configured wrongly during the upgrade. If your camera works well with the current firmware, we recommend not upgrading.

NOTE: If you download the firmware, check if the two .bin files are exactly the same size. If it fits, you can upgrade it. If not, download the firmware again until the files are exactly the same size. Otherwise, your camera will crash with the firmware you selected.



- **Refresh Camera List:** Manually refresh camera list
- **Flush Arp Buffer:** Use Flush Arp Buffer if you encounter an issue opening the camera webpage. This occurs when the camera uses a fixed IP address both wired and wirelessly. You may encounter an issue with not being able to open the camera webpage. You may try to use flush Arp buffer.
- **About IP Camera Tool:** Displays the current version of IP Camera Tool

2.2 Camera Login

Access the camera through the IP Camera Tool, Internet Explorer (IE), Firefox, Chrome, Safari or the INSTEON iOS/Android smartphone and tablet app (requires SmartLinc Hub, sold separately).

1) Double-click the camera's IP address. Your default browser will be automatically open and display the camera login page. You can also access the camera by directly by typing in the camera's IP address:

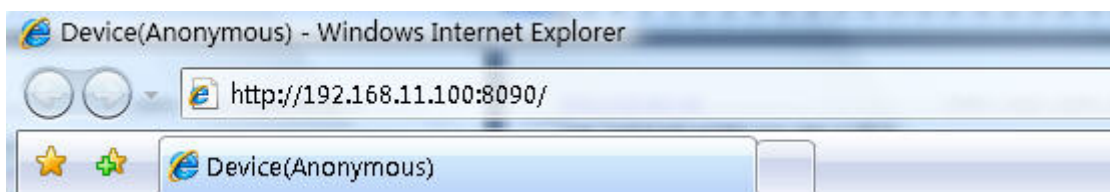
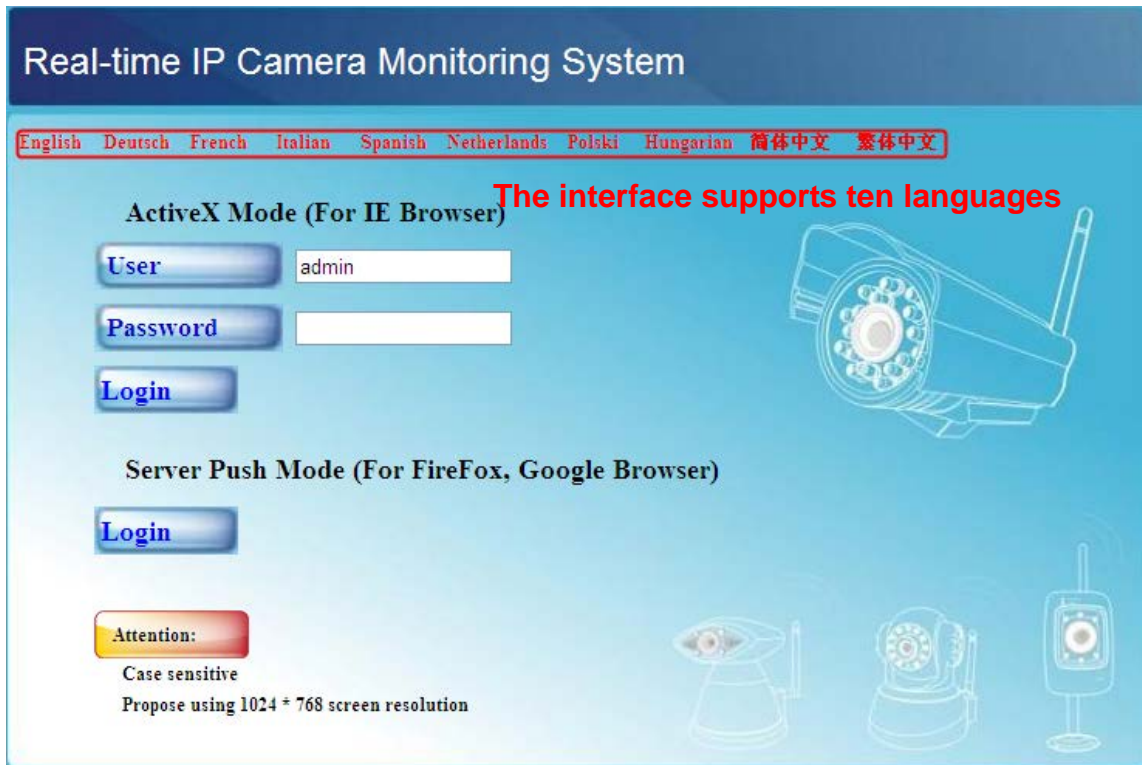


Figure 2.7

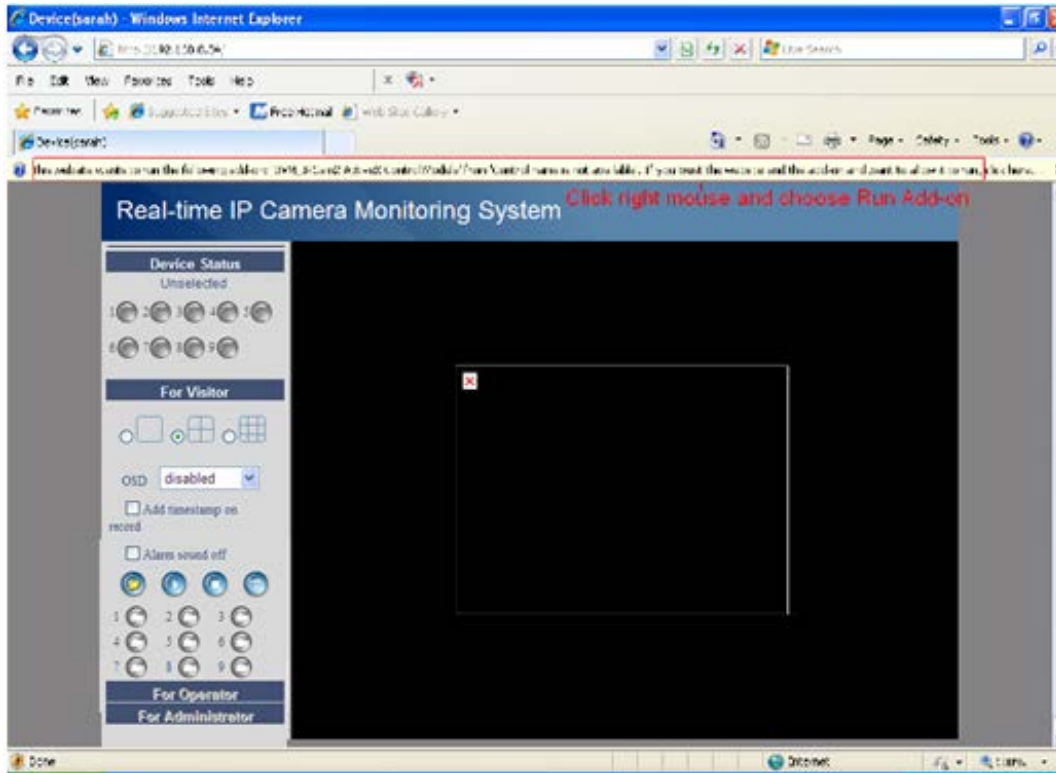


- 2) The default user is admin. Leave the password field blank.
- 3) There are two login modes depending on your browser: ActiveX (IE) and Server Push Mode (Safari, Firefox, Chrome)

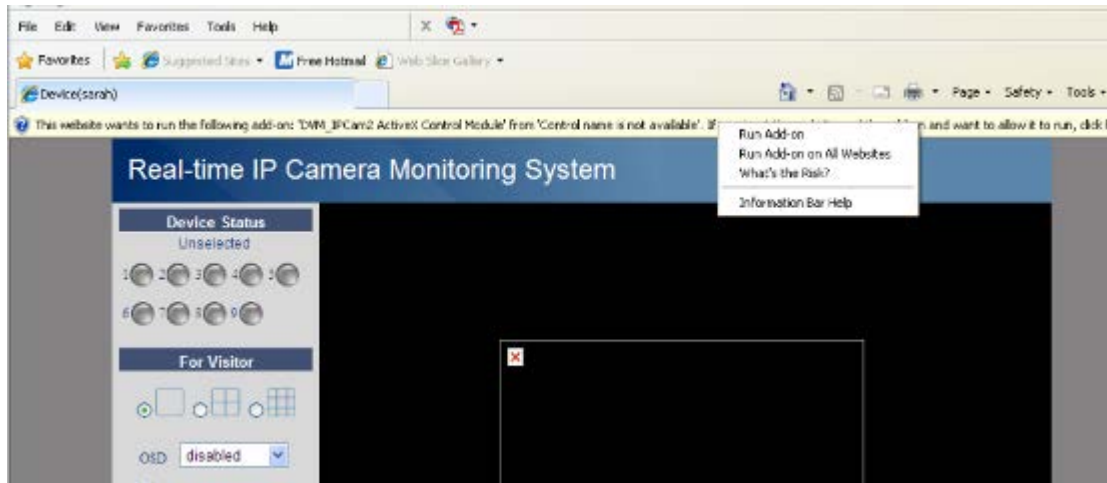


Internet Explorer Setup:

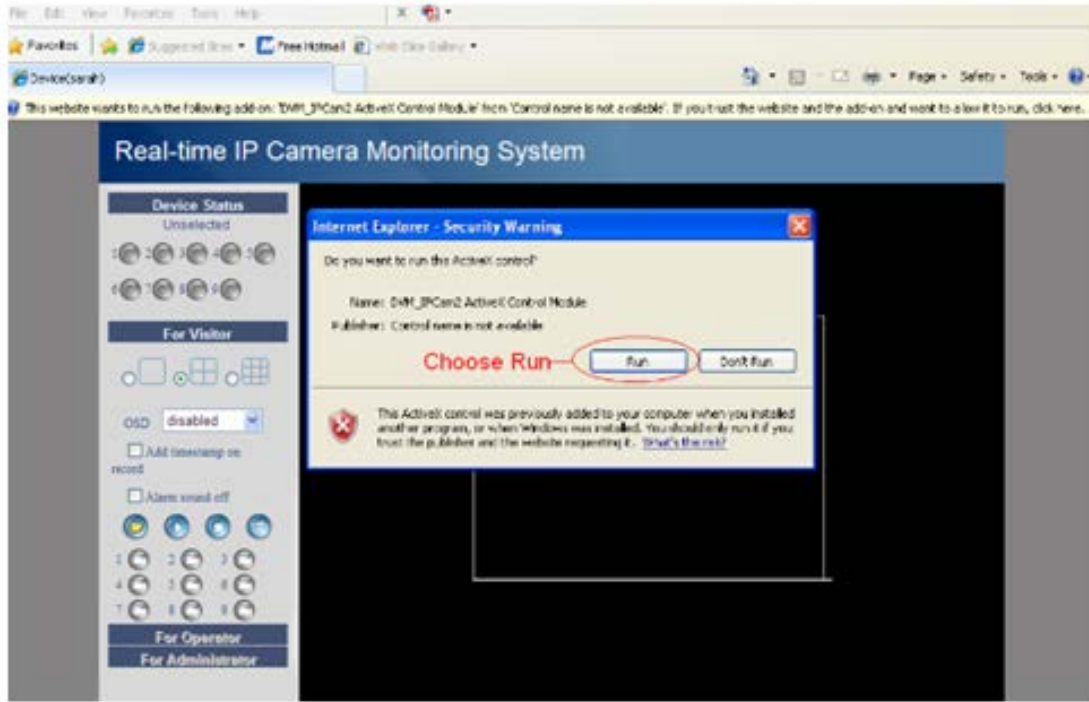
Fill in the “admin” user name and click the first login button.



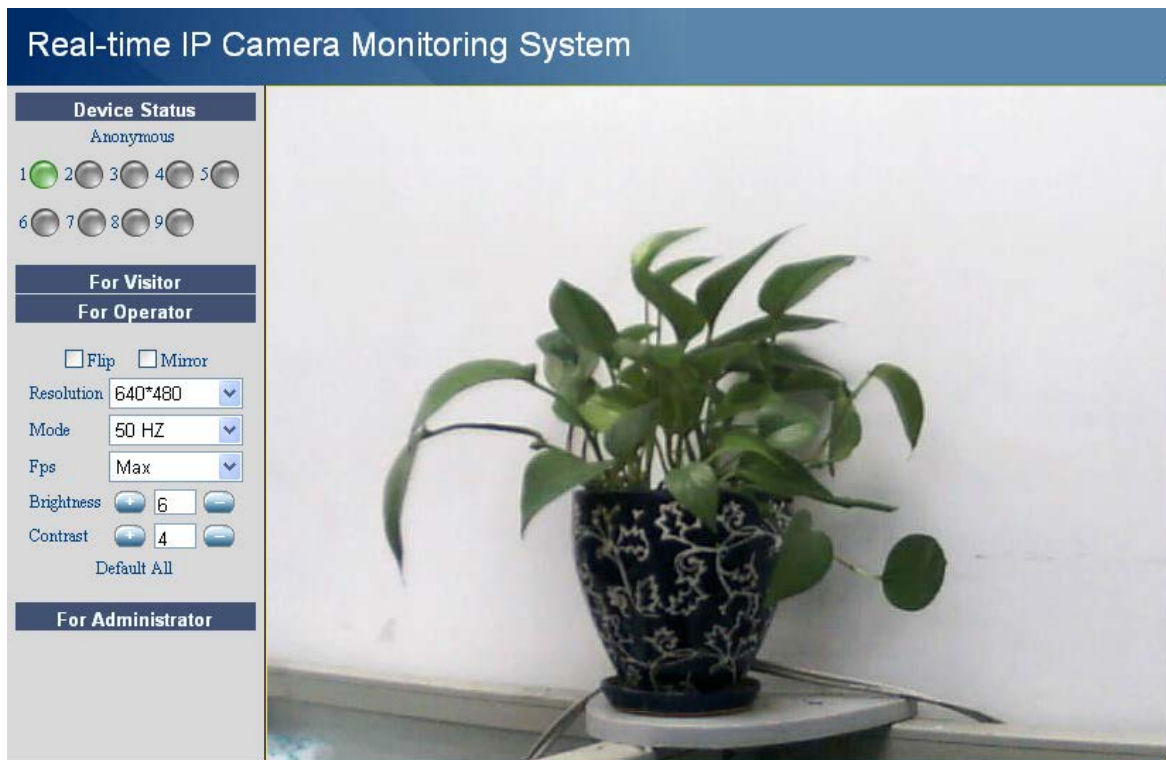
The first time you log into the UI, you will receive an ActiveX prompt (as shown above). Right click on the active prompt and choose Run Add-on.



Select Run on the next prompt. You will return to the login screen.



Fill in the “admin” user name and click login again. You will see a live video feed.



NOTE: If you cannot view live video after running ActiveX, change the port number to a number other than 80 and try again.

Make sure all firewall or antivirus software on your computer is not set to block your camera. If you are unable to run the ActiveX control, try disabling your firewall or antivirus program.

Safari, Firefox, Chrome and Other Browser Setup:

Fill in the “admin” user name and click the second login button.

You may be asked for your username and password again prior to login. After you enter your user name, you will see the camera's device status.

The screenshot shows the 'Real-time IP Camera Monitoring System' interface. On the left is a navigation menu with 'Device Status' selected. The main content area displays a table of device status information.

Device Status	
Device ID	0000DDDD5555
Device Firmware Version	11.35.2.46
Device Embedded Web UI Version	2.5.9.16
Alias	Anonymous
Alarm Status	None
DDNS Status	No Action
UPnP Status	No Action
MSN Status	Succeed

Click **Live Video** to see the camera's live video feed.

The screenshot shows the 'Real-time IP Camera Monitoring System' interface with the 'Live Video' tab selected. The left sidebar contains controls for video settings, and the main area shows a live video feed of a potted plant.

Device Status

Live Video

Flip Mirror

Resolution: 640*480

Mode: 50 HZ

Brightness: 6

Contrast: 4

refresh camera params

Snapshot

Device Management

2.3 Device Status**Internet Explorer:**

If camera is connected properly, device status LED will be green. If LED is yellow, check that ActiveX is enabled, or change the port and try again.



If you want to view the device information, choose For Administrator, then click Device Info.

Real-time IP Camera Monitoring System

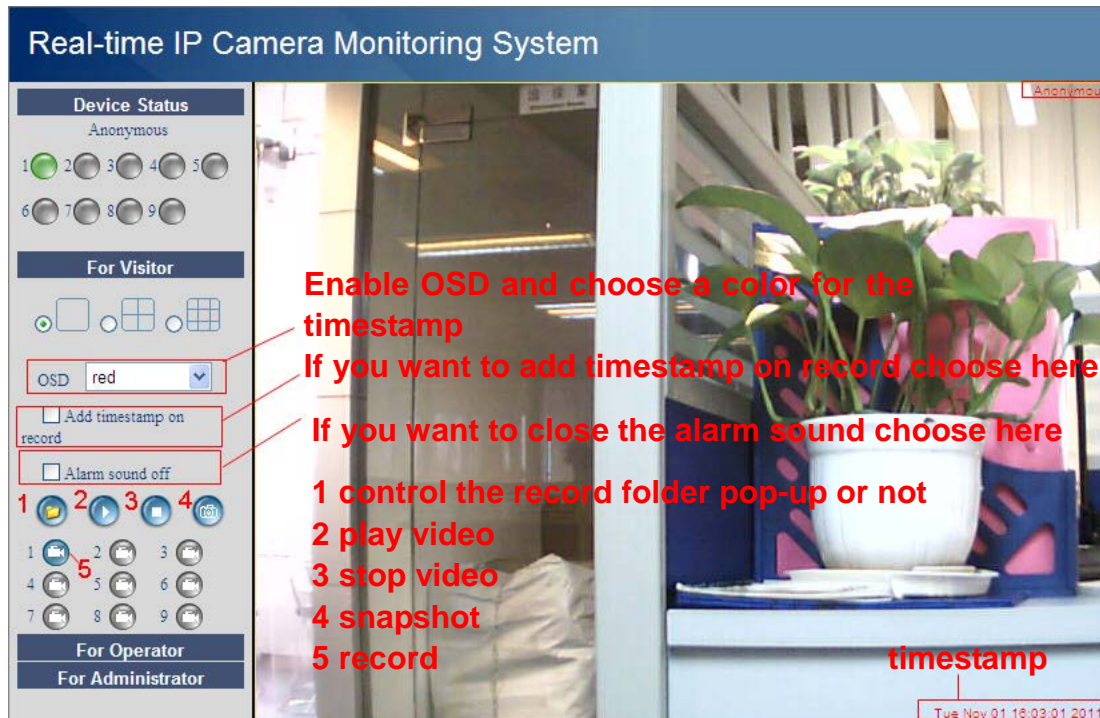
Device Status	
Device ID	0000DDDD5555
Device Firmware Version	11.35.2.46
Device Embedded Web UI Version	2.5.9.16
Alias	Anonymous
Alarm Status	None
DDNS Status	No Action
UPnP Status	No Action
MSN Status	Succeed

Firefox, Chrome and Safari:

When you login to the UI, you will see **Device Status** which is the same as **Device Info** in Internet Explorer.

2.4 For Visitor

Internet Explorer:




Multi-device window: The firmware inside the camera can support a maximum of nine simultaneous cameras. Add cameras in multi-device settings.

OSD: Add a timestamp to the video with five character colors


Add timestamp on record: Add a timestamp to a prerecorded video


Alarm sound off: Mute alarm sound when motion has been detected

 **(folder):** When you enable motion alarm, the camera will automatically record and store the file to a predefined folder. This icon controls the folder pop-up.

 **(play):** Camera video will play.

 **(stop):** Camera video will stop.

 **(still camera):** Snap a still picture.

 **(video camera):** Begin recording video. Click again to stop recording and save the .avi file to the folder you previously selected.

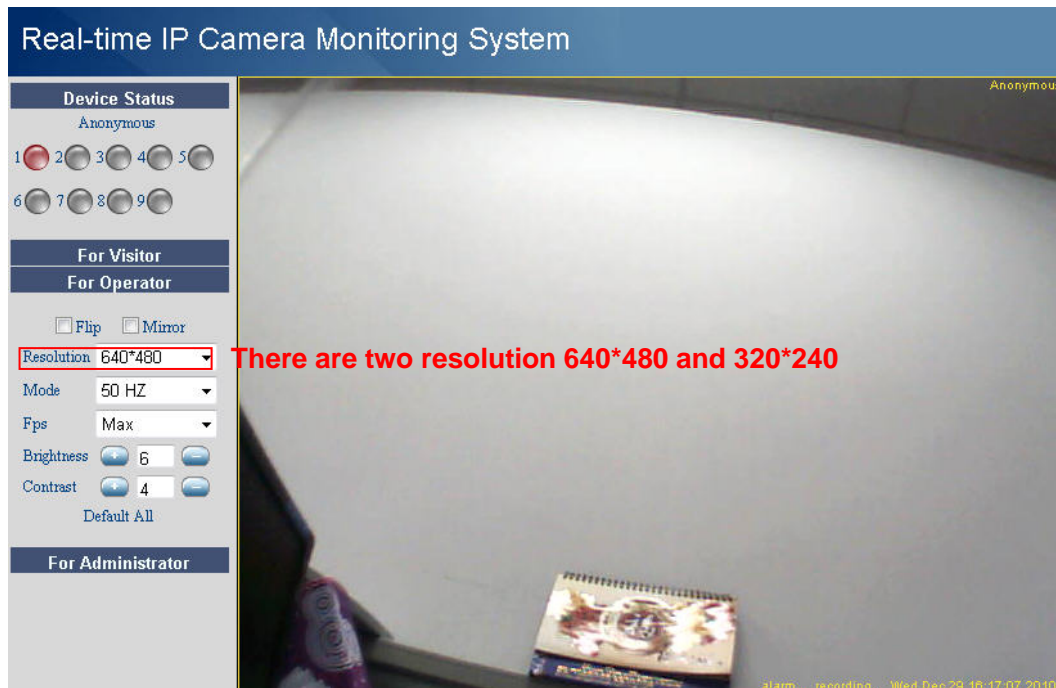
Firefox, Chrome and Safari:

You will see the picture above when you log into the camera as a visitor.

2.5 For Operator

Internet Explorer:

Click For Operator. The following screen will appear:



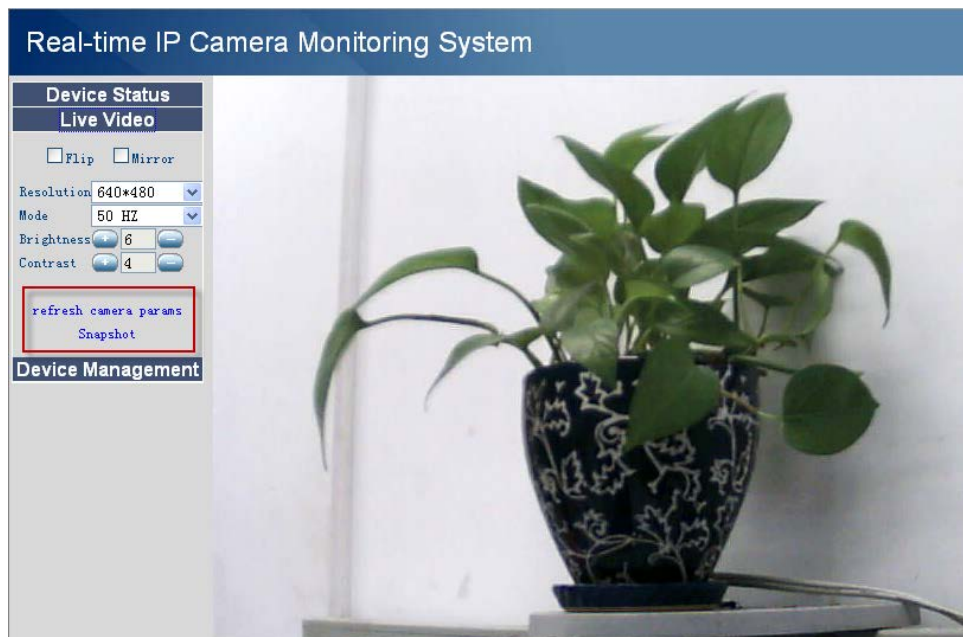
Flip and Mirror: Camera will reverse image/video feed.

Mode: Select lighting mode: 50HZ, 60HZ and outdoor (Note: it is not recommended to use this item outdoors.)

Brightness and Contrast: Adjust video quality.

For Firefox, Google Chrome and Safari

Click Live Video. The snapshot button is under For Operator. Other functions under Live Video include refresh video and refresh parameters.



2.6 For Administrator

Internet Explorer:

Click For Administrator. The Device Status will appear with the device ID, firmware version and other information about the camera.

Device Status	
Device ID	0000DDDD5555
Device Firmware Version	11.35.2.46
Device Embedded Web UI Version	2.5.9.16
Alias	Anonymous
Alarm Status	None
DDNS Status	No Action
UPnP Status	No Action
MSN Status	Succeed

Firefox, Chrome and Safari:

Click Device Management to enter the administrator settings page.

Alias Settings	
Alias	<input type="text" value="Anonymous"/>
<input type="button" value="Submit"/> <input type="button" value="Refresh"/>	

Device Info: This is similar to **Device Status** which will have the same information as IE.

Multi-Device Settings: Since this function is controlled by ActiveX, it is not available in Firefox or Chrome.

Back: In Firefox or Chrome browser, you must click Live Video or Device Status to go back.

NOTE: The record and multi-device functions are controlled by ActiveX controller, so Firefox and Chrome will not allow these functions.

3. CONFIGURE ADMINISTRATOR SETTINGS

3.1 Alias Settings

The default alias is anonymous. Set a name for your camera, then click Submit to save your change.

Alias Settings	
Alias	<input type="text" value="lpcam"/>
<input type="button" value="Submit"/> <input type="button" value="Refresh"/>	

3.2 Date and Time Settings

Choose the time zone for your country. You can choose Sync with NTP Server or Sync with PC Time. If your time zone uses Daylight Saving Time, enable it here.

Date&Time Settings	
Device Clock Time	Wednesday, May 11, 2011 6:40:31 PM
Device Clock Timezone	<input type="text" value="(GMT +08:00) Beijing, Singapore, Taipei"/>
Sync with NTP Server	<input checked="" type="checkbox"/> 1
Ntp Server	<input type="text" value="time.nist.gov"/> 2
Sync with PC Time	<input type="checkbox"/>
Daylight Saving Time	<input type="checkbox"/>
<input type="button" value="Submit"/> <input type="button" value="Refresh"/>	

3

Date&Time Settings	
Device Clock Time	Wednesday, May 11, 2011 6:45:08 PM
Device Clock Timezone	<input type="text" value="(GMT +08:00) Beijing, Singapore, Taipei"/>
Sync with NTP Server	<input type="checkbox"/> 1
Sync with PC Time	<input checked="" type="checkbox"/> 2
Daylight Saving Time	<input type="checkbox"/>
<input type="button" value="Submit"/> <input type="button" value="Refresh"/>	

3

Date&Time Settings	
Device Clock Time	Wednesday, May 11, 2011 7:53:48 PM
Device Clock Timezone	(GMT +08:00) Beijing, Singapore, Taipei 1
Sync with NTP Server	<input type="checkbox"/>
Sync with PC Time	<input checked="" type="checkbox"/> 2
Daylight Saving Time	<input checked="" type="checkbox"/> 3
Advance Time	60' 4
<input type="button" value="Submit"/> <input type="button" value="Refresh"/>	

The time is Wednesday, May 11, 2011 6:53:48PM before setting Daylight Saving Time

3.3 User Settings

Set permissions for a visitor, operator and administrator, then click Submit. The camera will reboot.

Users Settings		
User	Password	Group
admin	Administrator 1
user		Visitor
ipcam	...	Operator 2
		Visitor
		Visitor
		Visitor
		Visitor
		Visitor
<input type="button" value="Submit"/> <input type="button" value="Refresh"/>		

Choose a path for record and alarm record 3

Set Record Path	F:\alarm	4 <input type="button" value="Browse..."/> <input type="button" value="Browse..."/>
Set AlarmRecord Path	F:\video	

Here you can set the record file path and the alarm record file path for the camera. Record Path will store the file of a manual recording. Alarm record path will store the file of the recording when it is activated by motion (you must set motion alarm first).

Click Browse to choose the path. The default path for both is C:\Documents and Settings\All Users\Documents.

NOTE: If you are using Windows 7 or Vista, you cannot change the record path. Set it following the instructions:

Windows 7 or Vista's security level is higher than Windows XP/2000. For "set record path" function, add the Device IP address to the IE's "Trusted sites": IE→Tools→Internet Options→Security→Trusted sites→Sites→Add

3.4 Multi-Device Settings

IP Camera Tool can support up to nine cameras simultaneously.

3.4.1 Add Cameras in LAN

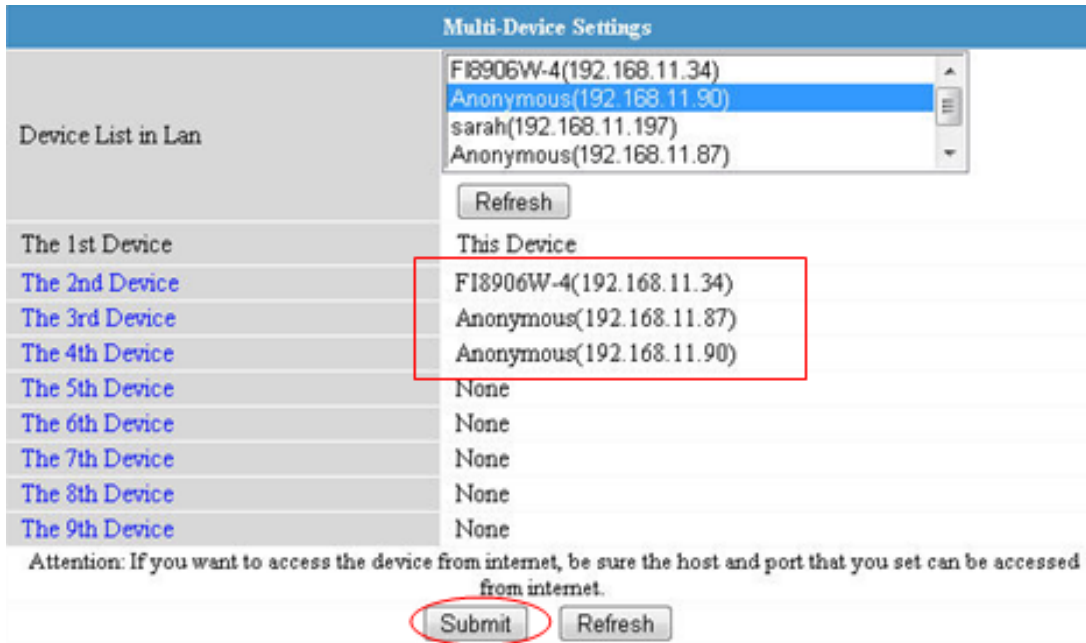
In Multi-Device Settings, you can see all of the devices that were found on the LAN. The first device listed is the default. You can add more cameras in the list for monitoring. To add an additional camera to monitor, click the selected camera in LAN device list; the alias, host, and HTTP port boxes will automatically be filled in. Enter the correct username and password, then click Add. After all cameras have been added, choose Submit.

Multi-Device Settings	
Device List in Lan	<div style="border: 1px solid gray; padding: 2px;"> Anonymous(192.168.0.56) IPcam Demo(192.168.0.66) Anonymous(192.168.0.175) Anonymous(192.168.0.68) </div> <div style="margin-top: 5px;"> <input type="button" value="Refresh"/> </div>
The 1st Device	This Device
The 2nd Device	IPcam Demo(192.168.0.66)
Alias	<input type="text" value="IPcam Demo"/>
Host	<input type="text" value="192.168.0.66"/>
Http Port	<input type="text" value="8078"/>
User	<input type="text" value="ipcam"/>
Password	<input type="password" value="•••••"/>
	<input type="button" value="Add"/> <input type="button" value="Remove"/>
The 3rd Device	None
The 4th Device	None
The 5th Device	None
The 6th Device	None
The 7th Device	None
The 8th Device	None
The 9th Device	None

1 Click it, alias, host and http port will be filled in the following boxes automatically

2 Enter user and password

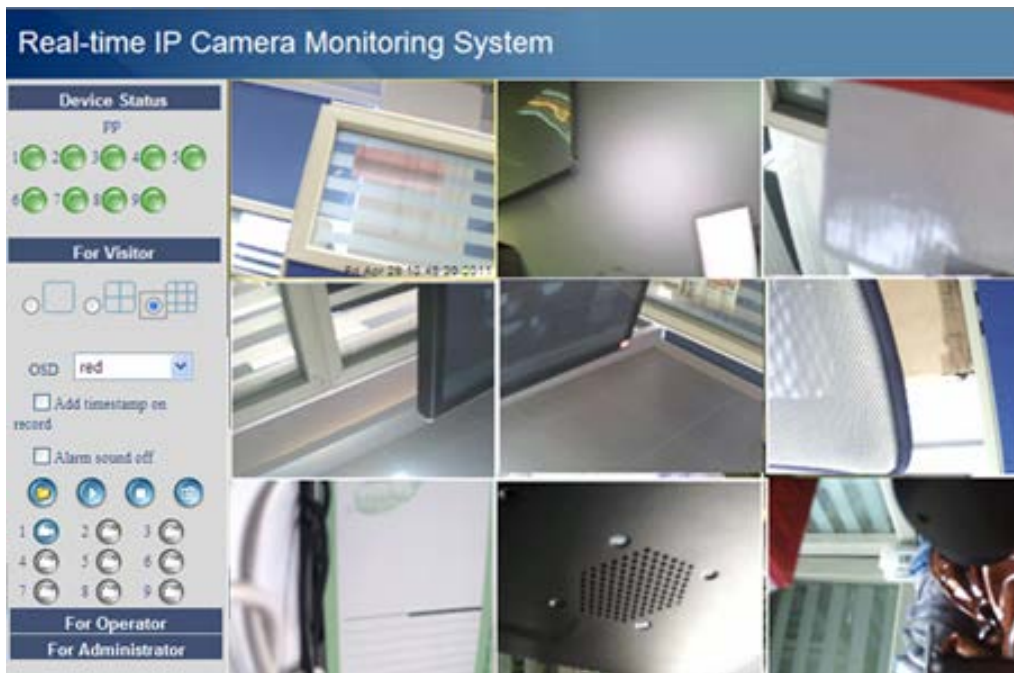
3



Click submit after you add all the cameras

To test, choose For Visitor and then click the button that corresponds with however many cameras you added. You will see the simultaneous live feeds from all the cameras.

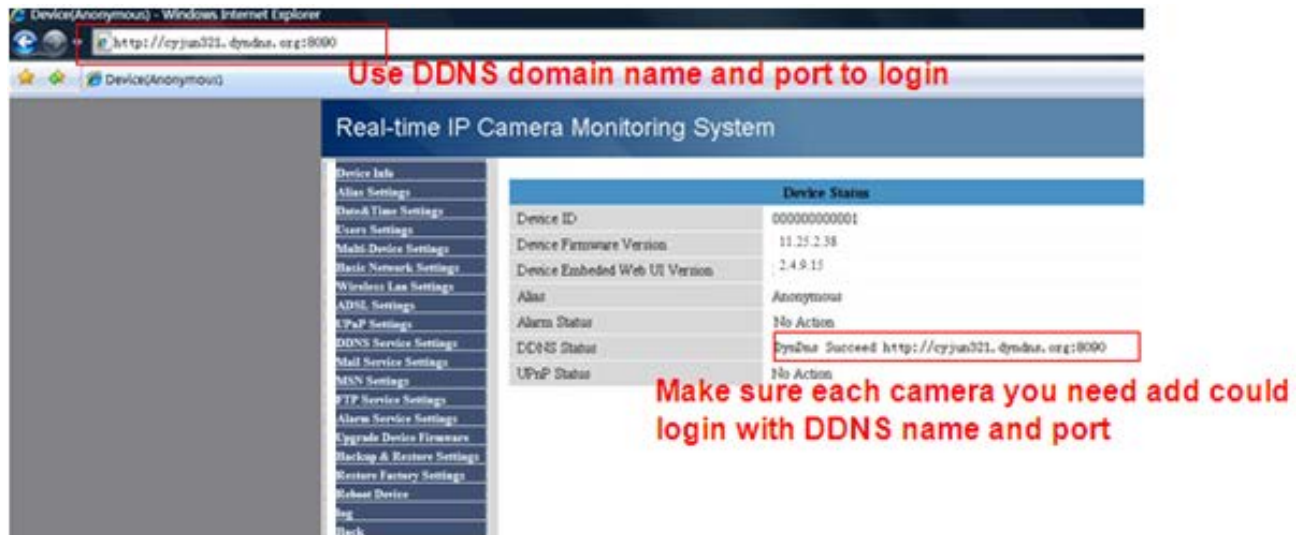




3.4.2 Add Cameras in WAN

If you want to view all cameras remotely, you will need to add them to use DDNS domain name. First, make sure all the cameras you added can be accessed over the Internet. (See Set DDNS settings in the Quick Start Guide.)

Log into the first camera using a DDNS domain name and port.



If you have several cameras, you can use the same DDNS domain name; you only need to set a different port number for each camera.

Click Multi-Device Settings. Choose the additional camera and fill in its name, DDNS domain name and port number. Enter user name and password, then choose Add.

NOTE: Fill in the second camera's DDNS domain name for its host, not its LAN IP.

Multi-Device Settings

Device List in Lan: Anonymous(192.168.0.61), Anonymous(192.168.0.197), sarah(192.168.0.105), Anonymous(192.168.0.109)

The 1st Device: This Device

The 2nd Device 1: None

2 Alias: sarah

3 Host: scamipcamera.dyndns.org

4 Http Port: 8068

5 User: admin

6 Password: ●●●●

Buttons: Add, Remove

The 2nd camera's name

Fill in the 2nd camera's DDNS host, not LAN IP

The 2nd camera's port

Enter the 2nd camera's user name and password

Add more cameras the same way. Click Submit to save.

Multi-Device Settings

Device List in Lan: Anonymous(192.168.0.109), Anonymous(192.168.0.60), sarah(192.168.0.105), Anonymous(192.168.0.61)

The 1st Device: This Device

The 2nd Device: sarah(foipcamera.dyndns.org)

The 3rd Device: IPcam(ipcamerademo.3322.org)

The 4th Device: Anonymous(ipcamera.dyndns.org)

The 5th Device: None

The 6th Device: None

The 7th Device: None

The 8th Device: None

The 9th Device: None

Attention: If you want to access the device from internet, be sure the host and port that you set can be accessed from internet.

Submit Refresh

Click Submit after finishing all the settings

Go back to video window. You will see all of the cameras accessible through the Internet. When you are away from home, you can use the first camera's DDNS domain name and port to view all the cameras via the Internet.

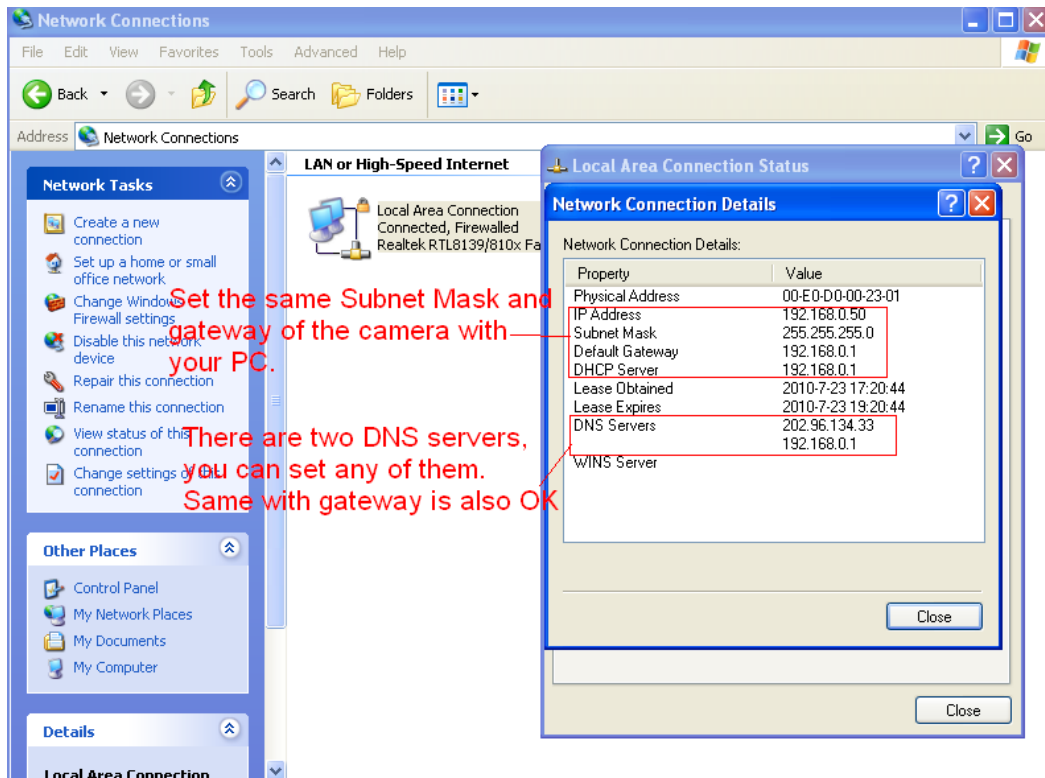
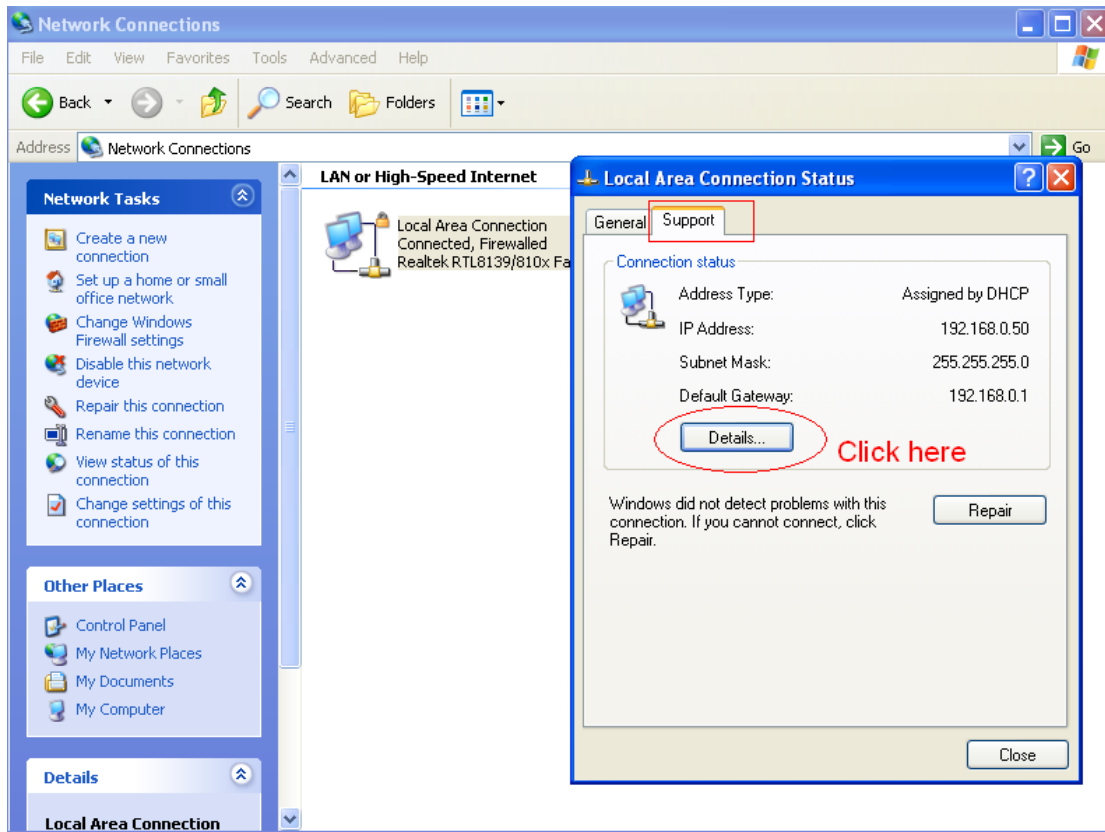


3.5 Basic Network Settings

Set a static IP for the camera by choosing Basic Network Settings and selecting an address within your LAN.

Basic Network Settings	
Obtain IP from DHCP Server	<input type="checkbox"/>
IP Addr	<input type="text" value="192.168.0.109"/>
Subnet Mask	<input type="text" value="255.255.0"/>
Gateway	<input type="text" value="192.168.0.1"/>
DNS Server	<input type="text" value="202.96.134.133"/>
Http Port	<input type="text" value="8090"/>
<input type="button" value="Submit"/> <input type="button" value="Refresh"/>	

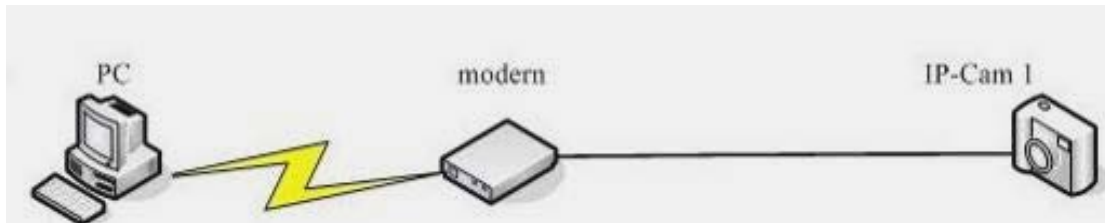
Follow the same procedure to access these settings in the IP Camera Tool.



3.6 Wireless LAN Settings

See Set Wireless LAN Settings in Quick Start Guide.

3.7 ADSL Settings



When directly connected to the Internet through ADSL, you can enter the ADSL username and password obtained from your ISP.

ADSL Settings	
Using ADSL Dialup	<input checked="" type="checkbox"/>
ADSL User	<input type="text" value="SZ10753952765089"/>
ADSL Password	<input type="password" value="••••••••"/>
<input type="button" value="Submit"/> <input type="button" value="Refresh"/>	

3.8 UPnP Settings

Check Using UPnP to MAP Port, then click Submit.

UPnP Settings	
Using UPnP to Map Port	<input checked="" type="checkbox"/>
<input type="button" value="Submit"/> <input type="button" value="Refresh"/>	

The camera's software will be configured to port forwarding. We recommend you manually configure port forwarding on your router.

3.9 DDNS Service Settings

DDNS allows users with Dynamic IP addresses to remotely access the camera from external connections. See Set DDNS Service Settings in the Quick Start Guide.

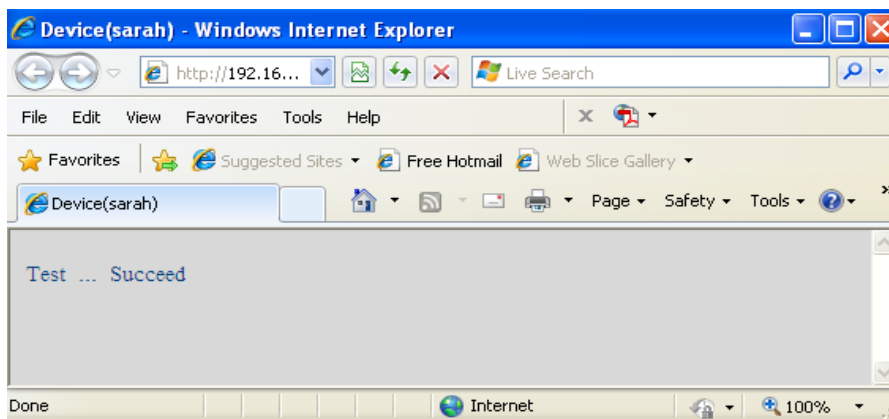
3.10 Mail Service Settings

If you want the camera to send email notifications when motion has been detected, configure Mail Service Settings.

Mail Service Settings		
Sender	cuiyao93@gmail.com	Mailbox for sender must support SMTP
Receiver 1	yaoyao160@sohu.com	
Receiver 2		Mailbox for receiver need not support SMTP, you can set 4 receivers
Receiver 3		
Receiver 4		
SMTP Server	smtp.gmail.com	3 Enter SMTP server for sender
SMTP Port	25	4
Transport Layer Security	STARTTLS	5
Gmail only support TLS at port 465 and support STARTTLS at port 25/587.		
Need Authentication	<input checked="" type="checkbox"/>	
SMTP User	cuiyao93@gmail.com	6 User name and password
SMTP Password	••••••••	
	8	Test Please set at first, and then test.
Report Internet IP by Mail	<input type="checkbox"/>	
		7

Make sure your sender address supports SMTP. Four recipients can be added to receive images. Use the correct SMTP port for your server; some SMTP servers require a specific port such as 587 or 465, so check with your ISP. Transport Layer Security usually is None, but check with your ISP to be sure. If you use Gmail, Transport Layer Security must be set to TLS or STARTTLS and SMTP Port must be set to 465, 25 or 587. Click Submit.

Click Test to see if SMTP has been successfully configured.



If one of the following errors occurs, check the information you entered, then click Test again:

- 1) Cannot connect to the server
- 2) Network Error. Please try later.
- 3) Server Error
- 4) Incorrect user or password
- 5) Sender denied by server. This may be because the server needed to authenticate the user, so check it and try again.
- 6) Receiver is denied by server. This may be due to the anti-spam privacy of the server.
- 7) Message is denied by server. This may be due to the anti-spam privacy of the server.
- 8) Server does not support the authentication mode used by the device

Report Internet IP by Mail: If selected, you will receive emails which contain internet IP information, such as when the camera is powered or the Internet IP has changed. Make sure the port is mapped to the router correctly.

Example of a Gmail Setup

Real-time IP Camera Monitoring System

Device Status	
Live Video	
Device Management	
Alias Settings	
Date&Time Settings	
Users Settings	
Basic Network Settings	
Wireless LAN Settings	
ADSL Settings	
UPnP Settings	
DDNS Service Settings	
Mail Service Settings	
MSN Settings	
FTP Service Settings	
Alarm Service Settings	
PTZ Settings	
Upgrade Device Firmware	
Backup & Restore Settings	
Restore Factory Settings	
Reboot Device	
Log	

Mail Service Settings	
Sender	<input type="text" value="emailaddress@gmail."/>
Receiver 1	<input type="text" value="emailaddress@gmail."/>
Receiver 2	<input type="text"/>
Receiver 3	<input type="text"/>
Receiver 4	<input type="text"/>
SMTP Server	<input type="text" value="smtp.googlemail.com"/>
SMTP Port	<input type="text" value="465"/>
Transport Layer Security	<input type="text" value="TLS"/>
Gmail only support TLS at port 465 and support STARTTLS at port 25/587.	
Need Authentication	<input checked="" type="checkbox"/>
SMTP User	<input type="text" value="emailaddress@gmail."/>
SMTP Password	<input type="password" value="....."/>
<input type="button" value="Test"/> Please set at first, and then test.	
Report Internet IP by Mail	<input checked="" type="checkbox"/>
<input type="button" value="Submit"/> <input type="button" value="Refresh"/>	

3.11 FTP Service Settings

If you want to upload images to your FTP server, you can set FTP Service Settings.

FTP Service Settings	
FTP Server	192.168.0.50
FTP Port	21
FTP User	sarah
FTP Password	•••••
FTP Upload Folder	/
FTP Mode	PORT
	Test Please set at first, and then test.
Upload Image Now	<input checked="" type="checkbox"/>
Upload Interval (Seconds)	30
Enable Set Filename	<input checked="" type="checkbox"/>
Filename	test
	Submit Refresh

Please click submit before test

FTP Service Settings	
FTP Server	ftp.mgenseal.com
FTP Port	21
FTP User	deotest@mgenseal.com
FTP Password	•••••
FTP Upload Folder	/
FTP Mode	PORT
	Test Please set at first, and then test.
Upload Image Now	<input checked="" type="checkbox"/>
Upload Interval (Seconds)	30
Enable Set Filename	<input checked="" type="checkbox"/>
Filename	test
	Submit Refresh

FTP server: Set up FTP Server to work with your camera (see topmost image). If you have a FTP server that can be accessed on the internet (see above image).

FTP Port: Usually port 21

FTP Upload Folder: Make sure the folder in which you plan to store images exists and is erasable. The camera will not automatically create a folder.

FTP Mode: Supports standard (POST) mode and passive (PASV) mode

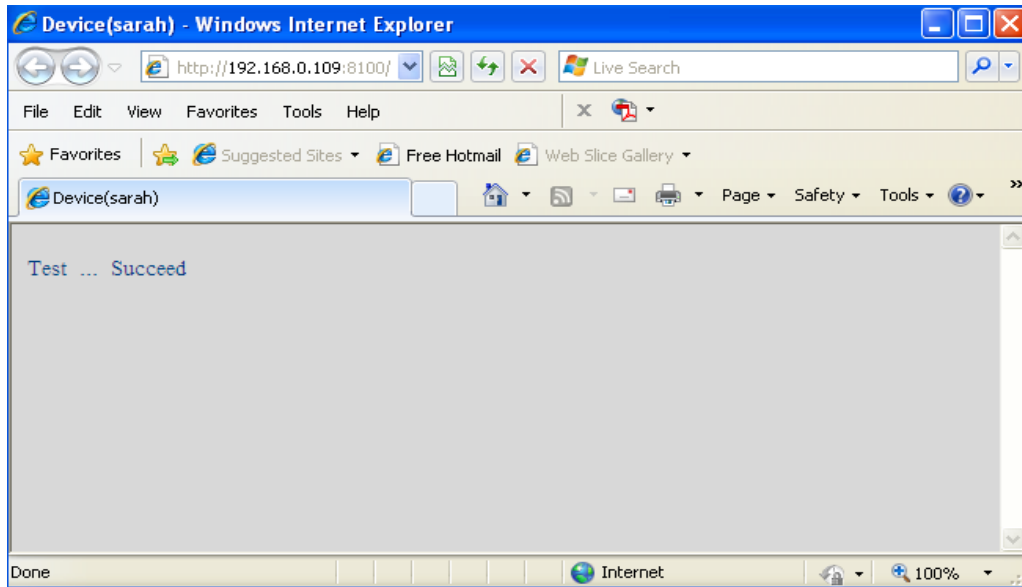
Upload Image Now: Uploads images when you enable the checkbox

Upload Interval: Refers to the time between the current image and the next image

Enable Set Filename: Set a name for the uploaded image when you enable the checkbox. If you select it, the uploaded image will be named after the filename you set. The next image will cover the last image and the FTP upload folder will only have one uploaded image named after the filename you set.

Filename: Fill in a name for the uploaded image file. This name is different from the alarm image. You cannot change the name of the alarm image.

Click Submit, then click Test. The following screen will appear if successful:



The following errors may occur:

- 1) Cannot connect to the server. Check that the FTP server is correct.
- 2) Network error; try later.
- 3) Server error
- 4) Incorrect username or password. Check username and password.
- 5) Cannot access the folder. Verify the folder exists and your account is authorized.
- 6) Error in PASV mode. Verify the server supports PASV mode.
- 7) Error in PORT mode. PASV mode should be selected if the device is behind a NAT.
- 8) Cannot upload file. Verify your account. Check parameters. The saved image name will be similar to 00606E8C1930(sarah)_0_20100728114350_25.jpg; check that your FTP server supports this file name format.

3.12 Alarm Service Settings

If you enable Motion Detect Armed, you will receive email alerts and still images when motion is detected.

Alarm Service Settings	
Motion Detect Armed	<input checked="" type="checkbox"/>
Motion Detect Sensibility	10
Motion Compensation	<input checked="" type="checkbox"/>
Send Mail on Alarm	<input type="checkbox"/>
Upload Image on Alarm	<input type="checkbox"/>
Scheduler	<input type="checkbox"/>

Submit Refresh

Choose it

If the number is bigger and the sensibility is higher

There will not be so much false alarm when light changes

Device Status	
Device ID	0000DDDD5555
Device Firmware Version	11.35.2.46
Device Embedded Web UI Version	2.5.9.16
Alias	Anonymous
Alarm Status	Motion Detect Alarm Motion trigger
DDNS Status	No Action
UPnP Status	No Action
MSN Status	Succeed

If motion is detected after you enable Motion Detect Armed, the Alarm Status will update to Motion Detect Alarm.

There are five alarm indicators:

- 1) Button turns red when motion is detected:



- 2) A beep will sound
- 3) The camera will automatically record for one minute after motion is detected and save the recording to your preset folder
- 4) The camera will send an email when motion is activated. If you want to receive images when motion is detected, set Mail Service Settings first. Then set motion alarm:

Alarm Service Settings	
Motion Detect Armed	<input checked="" type="checkbox"/>
Motion Detect Sensibility	10 ▾
Motion Compensation	<input type="checkbox"/>
Send Mail on Alarm	<input checked="" type="checkbox"/> Select this option
Upload Image on Alarm	<input type="checkbox"/>
Scheduler	<input type="checkbox"/>
<input checked="" type="button" value="Submit"/> <input type="button" value="Refresh"/>	

If you want the camera to send a motion detection email only during a specific time frame, use Scheduler to set the time range for motion alarm.

- 5) Upload images via FTP server when motion is detected. Set FTP Service Settings first and then set motion alarm:

Alarm Service Settings	
Motion Detect Armed	<input checked="" type="checkbox"/>
Motion Detect Sensibility	10 ▾
Motion Compensation	<input type="checkbox"/>
Send Mail on Alarm	<input type="checkbox"/>
Upload Image on Alarm	<input checked="" type="checkbox"/> Choose it
Upload Interval (Seconds)	2 You can set a interval for uploading images
Scheduler	<input type="checkbox"/>

There are two alarm options:

- 1) Alarm will activate any time motion is detected. If you wish to set this option, leave Scheduler unchecked. All time boxes will turn blue. Click Submit.

Alarm Service Settings	
Motion Detect Armed	<input checked="" type="checkbox"/>
Motion Detect Sensibility	10 ▾
Motion Compensation	<input type="checkbox"/>
Send Mail on Alarm	<input type="checkbox"/>
Upload Image on Alarm	<input type="checkbox"/>
Scheduler	<input checked="" type="checkbox"/>

Set	00	01	02	03	04	05	06	07	08	09	10	11	12	13	14	15	16	17	18	19	20	21	22	23
Clear	00	01	02	03	04	05	06	07	08	09	10	11	12	13	14	15	16	17	18	19	20	21	22	23
Day	0	1	2	3	4	5	6	7	8	9	10	11	12	13	14	15	16	17	18	19	20	21	22	23
Sun																								
Mon																								
Tue																								
Wed																								
Thu																								
Fri																								
Sat																								

- 2) Set a daily alarm schedule. Activate the camera alarm by selecting the time range in Scheduler. Click any hour between 00 and 23 in the Set row to highlight the row and activate a daily motion-detect alarm for that hour. In the example below, the camera will sound an alarm if motion is detected between 6 a.m. and 7 a.m. every day. Deselect a highlighted hour by clicking the corresponding number in the Clear row.

Alarm Service Settings	
Motion Detect Armed	<input checked="" type="checkbox"/>
Motion Detect Sensibility	10
Motion Compensation	<input type="checkbox"/>
Send Mail on Alarm	<input type="checkbox"/>
Upload Image on Alarm	<input type="checkbox"/>
Scheduler	<input checked="" type="checkbox"/>

Set	00	01	02	03	04	05	06	07	08	09	10	11	12	13	14	15	16	17	18	19	20	21	22	23
Clear	00	01	02	03	04	05	06	07	08	09	10	11	12	13	14	15	16	17	18	19	20	21	22	23
Day	0	1	2	3	4	5	6	7	8	9	10	11	12	13	14	15	16	17	18	19	20	21	22	23
Sun																								
Mon																								
Tue																								
Wed																								
Thu																								
Fri																								
Sat																								

If you want to set a motion-detect alarm for a specific day and time, click the box of the specified time/day. Click the box again to deselect.

Alarm Service Settings	
Motion Detect Armed	<input checked="" type="checkbox"/>
Motion Detect Sensibility	10
Motion Compensation	<input type="checkbox"/>
Send Mail on Alarm	<input type="checkbox"/>
Upload Image on Alarm	<input type="checkbox"/>
Scheduler	<input checked="" type="checkbox"/>

Set	00	01	02	03	04	05	06	07	08	09	10	11	12	13	14	15	16	17	18	19	20	21	22	23
Clear	00	01	02	03	04	05	06	07	08	09	10	11	12	13	14	15	16	17	18	19	20	21	22	23
Day	0	1	2	3	4	5	6	7	8	9	10	11	12	13	14	15	16	17	18	19	20	21	22	23
Sun																								
Mon																								
Tue																								
Wed																								
Thu																								
Fri																								
Sat																								

If you want the camera alarm activated most of the time, click Set All to highlight all boxes, then click the times you want the alarm deactivated. Click Submit.

Alarm Service Settings	
Motion Detect Armed	<input checked="" type="checkbox"/>
Motion Detect Sensibility	10
Motion Compensation	<input type="checkbox"/>
Send Mail on Alarm	<input type="checkbox"/>
Upload Image on Alarm	<input type="checkbox"/>
Scheduler	<input checked="" type="checkbox"/>
<input type="button" value="set All"/> <input type="button" value="clear All"/>	
Set	00 01 02 03 04 05 06 07 08 09 10 11 12 13 14 15 16 17 18 19 20 21 22 23
Clear	00 01 02 03 04 05 06 07 08 09 10 11 12 13 14 15 16 17 18 19 20 21 22 23
Day	0 1 2 3 4 5 6 7 8 9 10 11 12 13 14 15 16 17 18 19 20 21 22 23
Sun	
Mon	
Tue	
Wed	
Thu	
Fri	
Sat	
<input type="button" value="Submit"/> <input type="button" value="Refresh"/>	

3.13 Upgrade Device Firmware

For latest firmware updates, visit INSTEON.com.

3.14 Backup and Restore Settings

Click Submit to save all the parameters you have set. These parameters will be stored in a .bin that can be restored to load the previously set parameters.

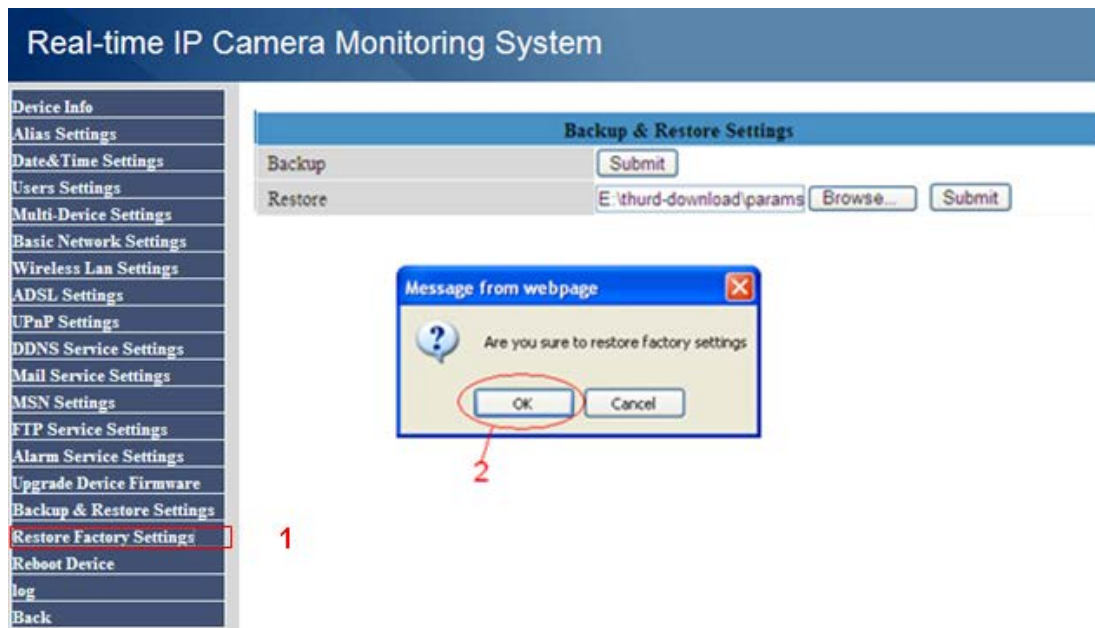
Backup & Restore Settings	
Backup	<input type="button" value="Submit"/>
Restore	<input type="text" value="E:\params.bin"/> <input type="button" value="Browse..."/> <input type="button" value="Submit"/>

Click Submit to store parameters

Load the parameters bin file

3.15 Restore Factory Settings

All parameters will return to factory default settings.



3.16 Reboot Device

Click Reboot Device to power cycle the camera. To manually reboot, unplug the camera and plug it back in.

3.17 Log

The log displays the users who have accessed the camera.

log					
Tue, 2010-11-30	09:25:36	admin	192.168.11.66	access	
Tue, 2010-11-30	09:26:10	admin	192.168.11.66	access	

Figure 3.36

3.18 Back

This will take you back to the video window.

4. APPENDIX

4.1 Frequently Asked Questions

Always confirm connectivity with your LAN and the internet prior to testing your camera.

4.1.1 I forgot my username and/or password

Reset the administrator username and password by making sure the camera is powered on, then pressing and holding the camera reset button for 15 seconds. This will factory restore the username and password to “admin” with no password.

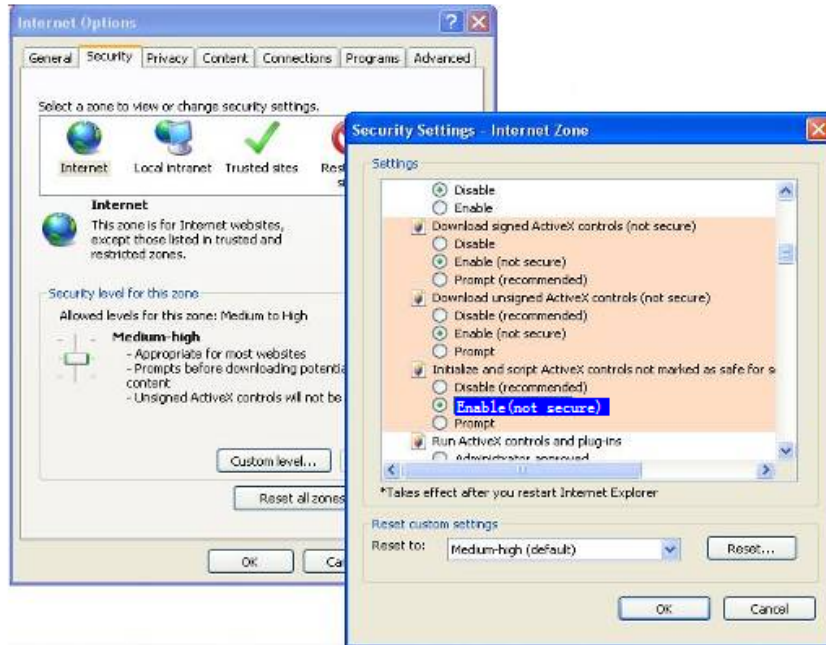
4.1.2 Why do I keep seeing “Subnet doesn’t match, dbclick to change”?


If IP Camera Tool shows this error, select Obtain IP from DHCP server. If this error still exists afterward, check your LAN connection and verify that the camera subnet and gateway are the same as your computer.

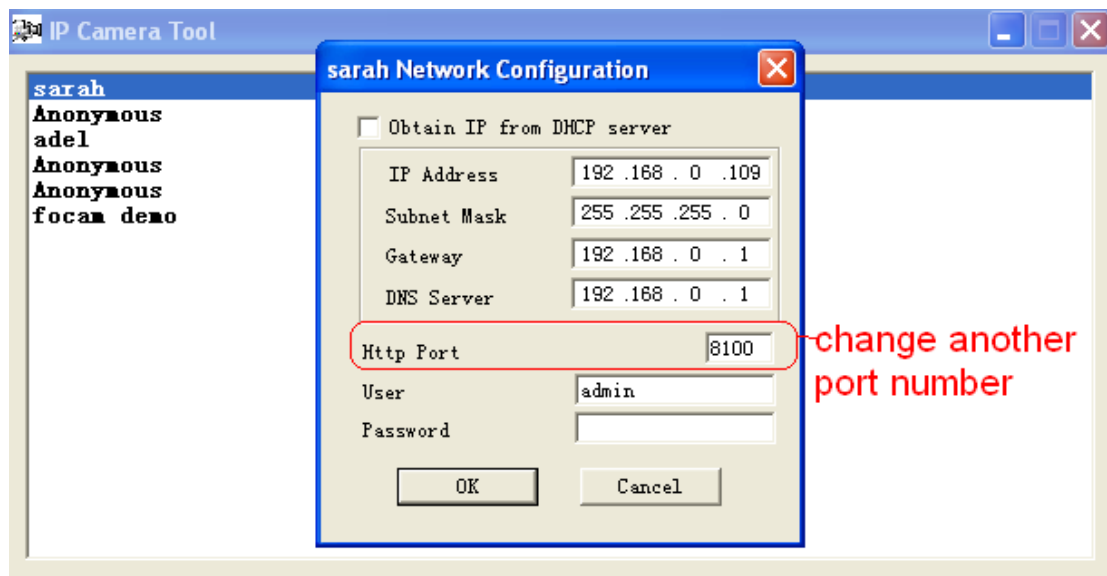
4.1.3 Why isn’t my video streaming or showing images?

The video streaming is transmitted by the ActiveX controller. If ActiveX controller isn’t installed correctly you will not see the video image. There are two ways to resolve this problem:

- 1) Reinstall IP Camera Tool and ActiveX control
- 2) Download ActiveX controller and set IE’s security setting of IE: IE→Tool→Internet Proper→Security→Custom Level→ActiveX control and Plug-ins. Enable the following:
 - Download unsigned ActiveX controls
 - Initialize and script ActiveX controls not marked as safe
 - Run ActiveX controls and plug-ins



If ActiveX is running but you still cannot see live video, a red cross is displayed in the center of the video and a yellow light  appears in the device status, change the port number (do not use port number 80).



Note: Make sure that your firewall or anti-virus software does not block the camera or ActiveX. If you still cannot see live video, try shutting down the firewall or anti-virus software and try again.

4.1.4 Why isn't the IP camera accessible on internet?

1. ActiveX controller is not installed correctly

2. The port that the camera is using is blocked by a firewall or anti-virus software. Try changing the port number.
3. Port forwarding is not successful (see How to Set DDN Service Settings in the Quick Start Guide).

4.1.5 IP Camera Tool can't find the camera's IP

1. Verify that the network cable is securely fastened to the camera
2. Make sure DHCP is enabled and MAC address filter is disabled on your router
3. Make sure that a firewall or anti-virus software does not block the camera. You can add the camera as a trusted site through your firewall or anti-virus software.

4.1.6 Why has the UPnP failed?

The UPnP only contains port forwarding. Sometimes, port forwarding may fail automatically because of a firewall or anti-virus software. It may also be due to the router's security settings. Manually configure port forwarding so the camera can be viewed on the internet.

4.1.7 Why can't I find a desktop shortcut to IP Camera Tool?

If you use Windows 7 or Vista and the shortcut is missing after installing IP Camera Tool, check the program path. For example, if the path reads: C:\Windows\System32\IPCamera.exe, then change it to C:\Windows\SysWOW64\IPCamera.exe. After this you should be able to use the shortcut without any problems.

4.1.8 Why can't I change the record path?

If you use Windows 7 or Vista, you may be not able to change the record path due to your computer's security settings. Instead, add the camera as a trusted IE site.

4.1.9 Why can't I find the multi-device settings and record icons?

Record and multi-device functions are controlled by ActiveX. These functions are not available in Firefox, Chrome and Safari.

4.1.10 Why won't my camera connect wirelessly?

If your camera cannot connect wirelessly after you enable the wireless settings, power cycle the camera by unplugging the power cable and plugging it back in. Make sure your wireless settings are correct and match your wireless router or access point.

4.1.11 Why can't I see my other cameras in multi-device WAN?

If you want to view all the cameras on WAN, verify that each camera you added in the multi-device settings can be accessed using the DDNS name and port number. Make sure you use the DDNS domain name, not the camera's LAN IP. See How to Add Cameras in WAN.

4.1.12 I only see a black screen or undefined characters when using remote login.

If you can remotely access the login page, this indicates that your DDNS settings are correct. If you are unable to see live video and/or undefined characters, this may be due to Internet speed issues or the camera using WiFi.

4.2 Default Parameters

Default network Parameters

IP address: obtain dynamically

Subnet mask: 255.255.255.0

Gateway: obtain dynamically

DHCP: Disabled

DDNS: Disabled

Default administrator username: admin

Default administrator password: no password

4.3 Port Forwarding Basics

A software port is a numbered connection that your network uses to provide or deny access to your home LAN (local area network) from a remote location. Port forwarding allows you to access your home LAN from any Internet connection.

IMPORTANT! Port forwarding setup varies based on the make and model of your router. These examples are provided to help you understand the port forwarding process, but see your router's

manual for device-specific port forwarding instructions.

Netgear

1. Type your router's address into an Internet browser. By default, this should be 192.168.0.1; the information should be provided in your router's instructions or on the router itself.
2. You will be prompted to enter a username and a password. For Netgear devices, the default username is "admin" and the password is either "password" or "1234" (unless you have already changed them).
3. Open "Advanced" and click "Port Forwarding." The Ports window will open with information on existing HTTP and FTP ports (these are used to connect your router to the Internet).
4. Click the "Add Custom Service" button and enter a new service name, such as INSTEONIPCamera1).
5. Enter the camera's IP address (found in the IP Camera Tool device list) into the Server IP Address field.
6. You will need to specify a port range to have open for your camera. 8000-8999 is a good range to work with, but make sure the port you open does not conflict with any ports you may already have open (from your list of Services on the "Port Forwarding" page). To enter a single port (ex. port 8030), use the same port for the "Start Port" and "End Port."
7. Click "Apply" and logout from the router settings page.
8. After making sure you are not connected to your local wireless connection, open your smartphone's Internet browser and enter your camera IP address followed immediately by a colon and the port you have opened (for example <http://192.168.1.4:8030>). You should see the camera login screen.

Linksys

1. Type your router's address into an Internet browser address bar. By default this should be 192.168.1.1; the information should be provided in your router's instructions or on the router itself.
2. You will be prompted to enter a username and a password. For Linksys devices, the default username is "admin" and the password is left blank unless you have changed them previously.

3. Once logged in, open "Applications and Gaming" on the left navigation and click on "Port Range Forwarding". The Ports window will open with information on existing HTTP and FTP ports (these are used to connect your router to the Internet).
4. In the "Application" field enter a new Service Name, such as INSTEONIPCamera1.
5. Enter the camera's IP address (found in the IP Camera Tool device list) into the Server IP Address field.
6. In the "UPD/TCP" field select "Both."
9. You will need to specify a port range to have open for your camera. 8000-8999 is a good range to work with, but make sure the port you open does not conflict with any ports you may already have open (from your list of Services on the "Port Forwarding" page). To enter a single port (ex. port 8030), use the same port for "Start" and "End."
7. Click "Save Settings" and logout from the router settings page.
8. After making sure you are not connected to your local wireless connection, open your smartphone's Internet browser and enter your camera IP address followed immediately by a colon and the port you have opened (for example <http://192.168.1.4:8030>). You should see the camera login screen.

D-Link

1. Type your router's address into an Internet browser. By default, this should be 192.168.0.1; the information should be provided in your router's instructions or on the router itself.
2. You will be prompted to enter a username and a password. For D-Link devices the default username is "admin" and the password is left blank unless you have changed them previously.
3. Once logged in, open "Advanced" and click on "Port Forwarding" in the left navigation. The Ports window will open with information on existing HTTP and FTP ports (these are used to connect your router to the Internet).
4. In the "Name" field enter a new Name, such as INSTEONIPCamera1.
5. Enter the camera's IP address (found in the IP Camera Tool device list) into the Server IP Address field.
6. In the "Traffic Type" drop-down menu select "Any."
7. You will need to specify a port range to have open for your camera. 8000-8999 is a good range to work with, but make sure the port you open does not conflict with any ports you

may already have open (from your list of Services on the "Port Forwarding" page). To enter a single port (ex. port 8030), use the same port for "Start" and "End."

8. In the "Schedule" drop-down menu, select "Always."
9. Click "Save Settings" and logout from the router settings page.
10. After making sure you are not connected to your local wireless connection, open your smartphone's Internet browser and enter your camera IP address followed immediately by a colon and the port you have opened (for example http://192.168.1.4:8030). You should see the camera login screen.

4.4 Specifications

ITEMS		INSTEON® OUTDOOR WIRELESS IP CAMERA (75791)
Image Sensor	Image Sensor	High Definition Color CMOS Sensor
	Display Resolution	640 x 480 Pixels(300k Pixels)
	Lens	f: 8mm
	Mini. Illumination	0.5Lux
Lens	Lens Type	Glass Lens
	IR-CUT	Filter can switch on/off automatically
Video	Image Compression	MJPEG
	Image Frame Rate	15fps(VGA),30fps(QVGA)
	Resolution	640 x 480(VGA), 320 x 240(QVGA)
	Flip Mirror Images	Vertical / Horizontal
	Light Frequency	50Hz, 60Hz or Outdoor
	Video Parameters	Brightness, Contrast
Communication	Ethernet	One 10/100Mbps RJ-45
	Supported Protocol	HTTP,FTP,TCP/IP,UDP,SMTP,DHCP,PPPoE,DDNS,UPnP,GPRS
	Wireless Standard	IEEE 802.11b/g/n
	Data Rate	802.11b: 11Mbps(Max.) 802.11g: 54Mbps(Max.) 802.11n: 150Mbps(Max.)
	Wireless Security	WEP and WPA and WPA2 Encryption
	Infrared Light	60 IR LEDs, Night visibility up to 98 feet (30 meters)
	Dimension	245(L)X196(W)X112(H)mm.
	Gross Weight	1320g (carton box package)
	Net Weight	1180g (accessories included)
	Power	Power Supply
Power Consumption		5.5 Watts (Max.)
Environment	Operating Temp.	0° ~ 55°C (32°F ~ 131°F)
	Operating Humidity	20% ~ 85% non-condensing
	Storage Temp.	-10°C ~ 60° (14°F ~ 140°F)

	Storage Humidity	0% ~ 90% non-condensing
PC Requirements	CPU	2.0GHZ or above
	Memory Size	256MB or above
	Display Card	64M or above
	Supported OS	Microsoft Windows 2000/XP /Vista/Windows 7-32bit / Windows 7-64bit / MAC OS
	Browser	IE 6.0, IE7.0, IE8.0,IE9.0, Firefox2.0,Firefox3.0,Goolge Chrome, Safari
Certification	CE,FCC	

5.0 OBTAINING TECHNICAL SUPPORT

If you have tried these suggested solutions, reviewed this Owner's Manual and still cannot resolve an issue you are having with INSTEON Outdoor Wireless IP Camera, please call the INSTEON Support Line at 800-762-7845 or visit www.insteon.com/support.