



# CSD

## PBS archive add on for Sales and Distribution

### Manual Part C

### – Display and Evaluation –

Compatible with

- SAP R/3 4.x
- SAP ERP 5.0
- SAP ERP 6.0
- SAP ERP 6.17

**SAP**<sup>®</sup> Certified  
Powered by SAP NetWeaver<sup>®</sup>

December 2, 2015

© 1999-2015 PBS Software GmbH

Schwanheimer Strasse 144a

64625 Bensheim, Germany

Phone: +49 - 6251 - 174 0

Fax: +49 - 6251 - 174 174

Email: [info@pbs-software.com](mailto:info@pbs-software.com)

Internet: [www.pbs-software.com](http://www.pbs-software.com)



**PBS archive add ons®** is a registered trademark of PBS Software GmbH, Bensheim.

**SAP, R/3, SAP ERP, SAP NetWeaver, ABAP** and others are registered trademarks of SAP SE, Walldorf/Baden.

**Acrobat Reader** is a registered trademark of Adobe Systems Incorporated.

# Introduction to the PBS ILM Concept

## Information Lifecycle Management

Information Lifecycle Management (ILM) means the administration of information related to the time when it is used, taking into account its total costs and compliance. A conclusive, efficient ILM concept must, as a result, control data growth, manage retention rules, and also ensure compliant data storage. Furthermore, an easy access to archived data is decisive and, for example, its transfer during internal and external audits.

## PBS ILM Concept

PBS software provides existing SAP customers extensive solutions to put into practice the requirements that were described above for a stringent and successful ILM concept. PBS is considered as an expert for complex, integrated data accesses to archived and database data and meanwhile, also to data that is located on decommissioned SAP systems. In addition to classical SAP data archiving, SAP BI-specific nearline storage is also supported.

## PBS archive add ons®

PBS archive add ons always rely on SAP archiving having been carried out successfully. This is the basis for a permanently high-performing SAP system. In principle, you can indeed retain posted documents in the SAP database for a very long time due to a large database capacity. Depending on the document volume, this may result, however, in massive performance losses and, sooner or later, heavily increasing operation costs. The daily backup becomes difficult for large data stocks, for example.

A convenient display and evaluation of archived transaction data – as the SAP user is used to for database data – can often only be carried out in a very restricted manner using SAP standard means depending on the application module. This is particularly the case for large archive data stocks. The PBS archive add ons can be used here. They can be provided for nearly all SAP modules and release levels, and start with a "C" (for Complete) in their description. For example, PBS archive add on CCOPA for the SAP module COPA.

Using the PBS archive add ons you can quickly and easily access your archived data even after data archiving during your day-to-day business. The unrestricted data access is realized by an intelligent indexing concept. It extends the SAP archive infrastructure components and integrates itself optimally with SAP archiving. Archive data that has been indexed can still be provided after a release upgrade immediately, without restrictions, and without migration effort. The PBS archive index is stored in sequential files of the SAP file system in the same way as the SAP archive data. Afterwards, you can access the archive data online via the familiar transactions. The

SAP user can display the data from the SAP database and the archive data simultaneously via the PBS archive add on index. For the user, it seems as though the archived data is still in the SAP database.

The deep integration of the PBS transactions also enables direct navigation to subsequent and previous documents both within the indexed SAP module as well as to linked documents from other SAP modules. This applies not only for resident but also without restrictions for archived data. The benefit for the user increases the more PBS archive add ons are used.

The potential benefits of the ILM concept raises substantially if you take into account the savings that result from the SAP mirror systems. There are usually at least two of them meaning that the saved disk storage can be tripled by performing data archiving. Thus, time is saved for the data backup.

# Table of Contents

<b>1. Introduction</b>	<b>6</b>
<b>2. Application Functions</b>	<b>7</b>
2.1. Navigation within the PBS archive add on CSD up to 4.5x	7
2.2. Navigation in the PBS archive add on CSD from 4.6	8
<b>3. Display Transactions</b>	<b>9</b>
3.1. Transaction Overview	9
3.2. Transactions Regarding Customer Operations	12
3.3. Document Display Transactions	14
<b>4. ABAP Interfaces to the PBS archive add on CSD</b>	<b>17</b>
4.1. Access via ABAP Routines	17
4.2. Logical Databases	18
4.3. Access via Conversion Tool	18

# 1. Introduction

The **PBS archive add ons** are constructed in modular form and cover the application modules FI, SD, MM, CO etc. with a special program package for exactly this application. You can easily see from the name which *PBS archive add on* belongs to which SAP module: CFI, CSD, CMM, CCO etc. All *PBS archive add ons* have in common that they can be easily installed in the SAP R/3 system via the SAP transport utilities "tp" and "SAINT". For installation details of the *PBS archive add ons* please see the specific installation manual (manual part A).

This manual on the display transaction and application programs was written to support you when using the *PBS archive add on CSD*. Please see the administration manual (part B) regarding construction and administration of the *PBS archive add on CSD*.

The modular user manual of each *PBS archive add on* is composed of partial manuals:

- Part A: Installation
- Part B: Administration, Archive Construction and Maintenance
- Part C: Application Programs / Transactions
- Part D: Migration Support R/2 => R/3 (if available)

There are additional manuals for the PBS utilities: Conversion Tool, Archive Browser, Translation Tool.

Should you have questions regarding the installation of the *PBS archive add ons* or if you have problems when installing the software please call directly the **Service Hotline of PBS Software GmbH**:

Phone: +49 - 6251 - 174 110  
Fax: +49 - 6251 - 174 174  
email: [hotline@pbs-software.com](mailto:hotline@pbs-software.com)

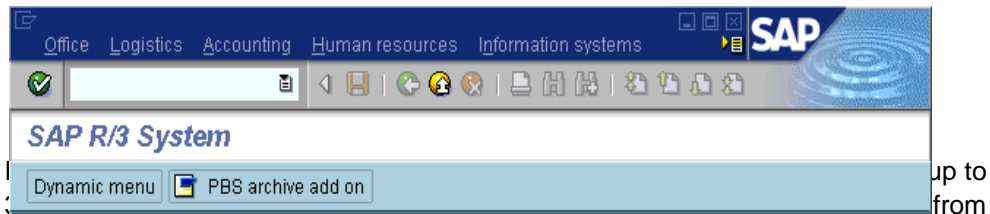
## Release Compatibility

The **PBS archive add on CSD** discussed in this manual runs with the basis programs of SAP SE, D-69190 Walldorf/Baden, system R/3, **releases 3.0, 3.1, 4.0, 4.5, 4.6, R/3 Enterprise, ECC 5.0, ECC 6.0, ECC 6.17 correction levels a to z.**

## 2. Application Functions

### 2.1. Navigation within the PBS archive add on CSD up to 4.5x

PBS has integrated in its software a start menu which corresponds to the SAP standard menu S000 after having registered in the SAP system. The only difference is the additional function button "PBS archive add ons".



release 4.5.

After pressing the button, you get to the main menu transactions for the PBS archive add ons, by which you can address the different modules in a comfortable way.

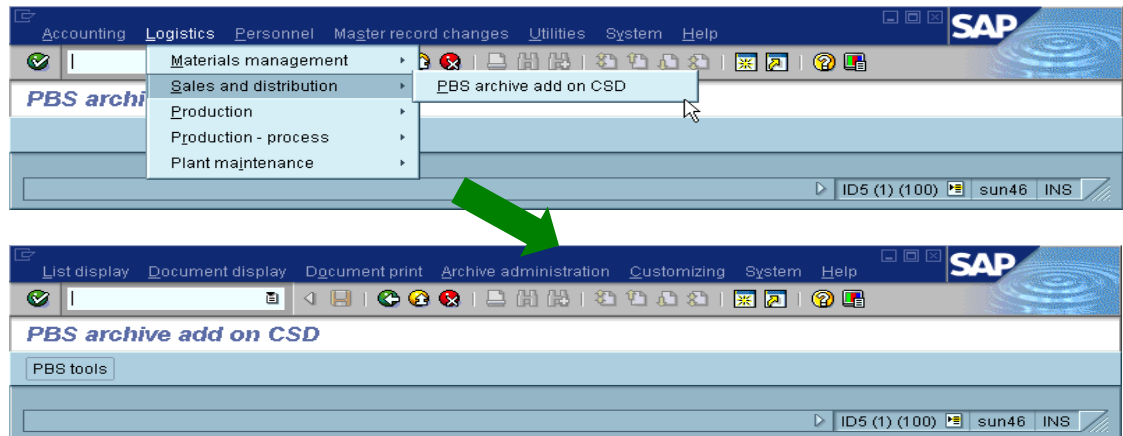


Diagram 2: PBS main menu with branching off to PBS archive add on CSD

## 2.2. Navigation in the PBS archive add on CSD from 4.6

From the Easy Access menu you can easily navigate via the button 'User menu' through the functions of the *PBS archive add on CSD*. This is possible when your system administrator has added the role/activity group to your user profile.

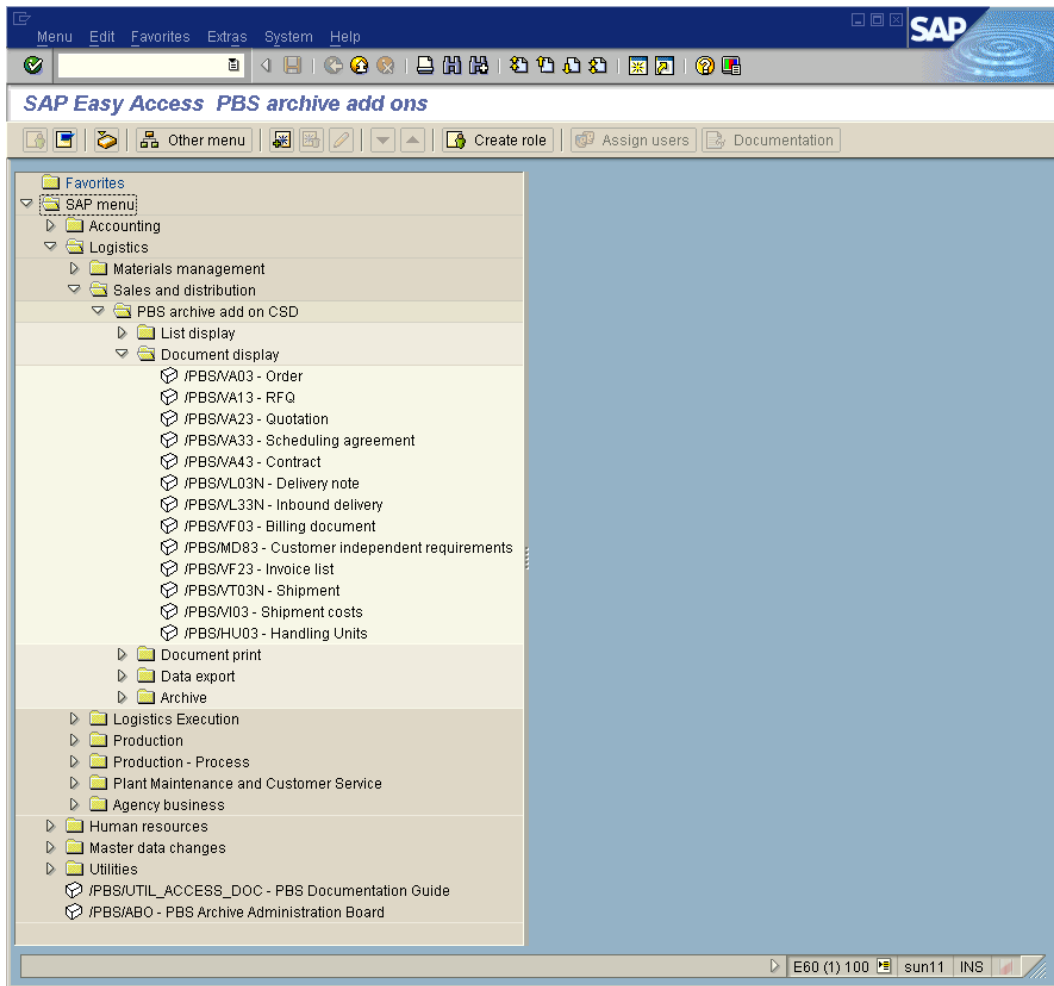


Diagram 3: PBS Archive add on in the SAP Easy Access Menu



## 3. Display Transactions

With the *PBS archive add on CSD* the following transactions are available which read documents from the operative tables of the SAP system and documents from the PBS archive. In general, you can also start these functions via the PBS navigation tools described in chapters 2.1 and 2.2.

Note: From release 4.0 the PBS transaction names are composed of the corresponding SAP names by concatenating "/PBS/" and the SAP original name e.g.: SAP: VA03 becomes /PBS/VA03.

### 3.1. Transaction Overview

#### PBS transactions for sales documents

Release 3.x	Release 4.x and higher	Corresponding SAP transaction	Description
ZA03	/PBS/VA03	VA03	Display Sales Order
ZA05	/PBS/VA05	VA05	List of Sales Orders
--	/PBS/VA05N (from Rel. 5.0)	VA05N	List of Sales Orders
ZA13	/PBS/VA13	VA13	Display Inquiry
ZA15	/PBS/VA15	VA15	List of Inquiries
--	/PBS/VA15N (from Rel. 5.0)	VA15N	Inquiries List
ZA23	/PBS/VA23	VA23	Display Quotation
ZA25	/PBS/VA25	VA25	List of Quotations
--	/PBS/VA25N (from Rel. 5.0)	VA25N	List of Quotations
ZA43	/PBS/VA43	VA43	Display Contract
ZA45	/PBS/VA45	VA45	List of Contracts
--	/PBS/VA45N (from Rel. 5.0)	VA45N	List of Contracts
ZA33	/PBS/VA33	VA33	Display Scheduling Agree- ment

ZA35	/PBS/VA35	VA35	List of Scheduling Agreements
--	/PBS/VA35N (from Rel. 5.0)	VA35N	List of Scheduling Agreements
--	/PBS/VA53	VA53	Display Item Proposal
--	/PBS/VA55	VA55	List of Item Proposals

**PBS transactions for invoice documents**

Release 3.x	Release 4.x and higher	Corresponding SAP transaction	Description
ZF03	/PBS/VF03	VF03	Display Billing Document
ZF05	/PBS/VF05	VF05	List of Billing Documents
--	/PBS/VF05N (from Rel. 5.0)	VF05N	List of Billing Documents
ZF23	/PBS/VF23	VF23	Display Invoice List
ZF25	/PBS/VF25	VF25	List of Invoice Lists
--	/PBS/VF31	VF31	Output from Billing

**PBS transactions for shipment documents**

Release 3.x	Release 4.x and higher	Corresponding SAP transaction	Description
ZV03	/PBS/VL03	VL03	Display Outbound Delivery
--	/PBS/VL03N	VL03N	Display Outbound Delivery
ZV05	/PBS/VL05	VL05	List of Deliveries
--	/PBS/VL33	VL33	Display Inbound Delivery
--	/PBS/VL33N	VL33N	Display Inbound Delivery
--	/PBS/VL71	VL71	Output from Deliveries
--	/PBS/HUMO	HUMO	Selection of Handling Units
--	/PBS/HU03	HU03	Display of HUs

### PBS transactions for customer primary requirement

Release 3.x	Release 4.x and higher	Corresponding SAP transaction	Description
ZD83	/PBS/MD83	MD83	Display Independent Requirements
ZD85	/PBS/MD85	MD85	List of Customer Independent Requirements

### PBS transactions for shipment

Release 3.x	Release 4.x and higher	Corresponding SAP transaction	Description
--	/PBS/VT03	VT03	Display Shipment
--	/PBS/VT03N	VT03N	Display Shipment
--	/PBS/VT11	VT11	Shipment List

### PBS transactions for shipment costs

Release 3.x	Release 5.0 and higher	Corresponding SAP transaction	Description
--	/PBS/VI03	VI03	Display Shipment costs
--	/PBS/VI11	VI11	List Shipment costs

### Other transactions

Release 3.x	Release 4.x and higher	Corresponding SAP transaction	Description
ZCSD	/PBS/CSD	--	Area menu CSD
ZPBS	/PBS/MAIN	--	Area menu PBS
YPBS	/PBS/PBS	--	Area menu PBS

In principle, the transactions are analogue in their functionality to the SAP standard transactions if a comparable transaction exists. Please see the SAP documentation for the detailed description of the transactions. In the following chapters we discuss additional transactions and the differences compared to the standard.

## 3.2. Transactions Regarding Customer Operations

In this section we discuss archive transaction /PBS/VA05 displaying sales orders. This transaction is analogue to SAP transaction VA05, however, is supplemented by an additional field (Diagram 4). Here the user can restrict the selection volume by choosing: : '1=DB+archive 2=DB 3=archive'. The entry of the corresponding number 1, 2 or 3 means that the sales orders are either displayed from the R/3 database or from the archive or from both data sources.

Transactions /PBS/VA15, /PBS/VA25, /PBS/VA35, /PBS/VA45, /PBS/VF05 and /PBS/VL05 (inquiries, quotations, delivery schedules, contracts and delivery notes regarding the customer) are analogue with regard to their display and handling.

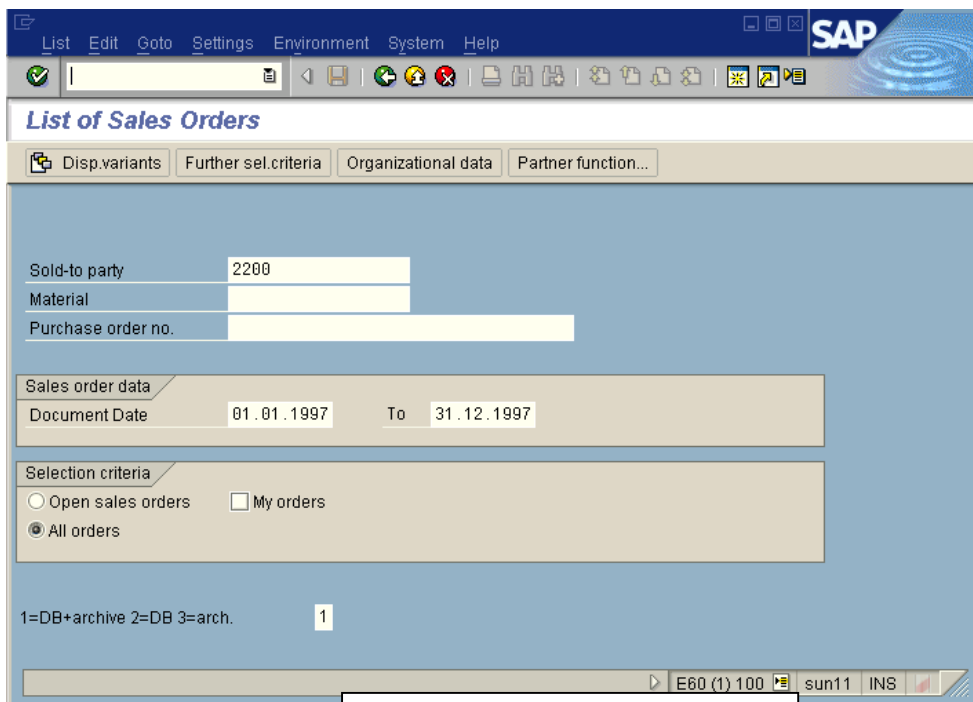


Diagram 4: Selection screen Research medium

The selection made here shows all sales orders for ordering party 2200 and document date 01.01.1997 to 31.12.1997. In this respect, the documents from the SAP database and the documents from the PBS archive are considered.

Having pressed the enter key, the sales orders which have been found are listed in table form as displayed below:

The screenshot shows the SAP 'List of Sales Orders By partner' window. The title bar includes 'List Edit Goto Settings Environment System Help' and the SAP logo. Below the title bar, there are navigation icons and a search bar. The main content area displays the title 'List of Sales Orders By partner' and the following details:

- Sold-to party:** 0000002200  
HTG Komponente GmbH  
Hannover
- Doc. date:** 01.01.1997 To 31.12.1997

The main table lists sales orders with the following columns: PO number, Doc. Date, SaTy, SD Doc., Sold-to pt, Net value, Curr., A, and Name 1. The first row is highlighted in yellow.

PO number	Doc. Date	SaTy	SD Doc.	Sold-to pt	Net value	Curr.	A	Name 1
DG-21011997-1	21.01.1997	OR	4972	2200	28.604,00	DEM	*	HTG Komponente GmbH
DG-23011997-4	23.01.1997	OR	4993	2200	40.851,00	DEM	*	HTG Komponente GmbH
DG-24011997-3	24.01.1997	OR	4999	2200	32.485,00	DEM	*	HTG Komponente GmbH
DG-27011997-2	27.01.1997	OR	5006	2200	35.842,00	DEM	*	HTG Komponente GmbH
DG-19970128-1	28.01.1997	OR	5014	2200	24.108,00	DEM		HTG Komponente GmbH
DG-19970221-1	21.02.1997	OR	5042	2200	101.102,00	DEM		HTG Komponente GmbH
DG-19970307-1	07.03.1997	OR	5057	2200	118.130,00	DEM		HTG Komponente GmbH
DG-19970415-2	15.04.1997	OR	5069	2200	83.339,00	DEM		HTG Komponente GmbH
DG-19970421-1	21.04.1997	OR	5077	2200	96.846,00	DEM		HTG Komponente GmbH
DG-19970513-2	13.05.1997	OR	5098	2200	139.312,00	DEM		HTG Komponente GmbH
DG-19970609-2	09.06.1997	OR	5115	2200	26.817,00	DEM		HTG Komponente GmbH
DG-19970707-2	07.07.1997	OR	5133	2200	19.942,00	DEM		HTG Komponente GmbH
DG-19970804-3	04.08.1997	OR	5148	2200	1.620,00	DEM		HTG Komponente GmbH
DG-19970808-2	08.08.1997	OR	5155	2200	15.066,00	DEM		HTG Komponente GmbH
DG-19970904-4	04.09.1997	OR	5175	2200	200.952,00	DEM		HTG Komponente GmbH
DG-19970908-5	08.09.1997	OR	5187	2200	53.100,00	DEM		HTG Komponente GmbH
DG-19971009-4	09.10.1997	OR	5210	2200	166.826,00	DEM		HTG Komponente GmbH

The status bar at the bottom shows 'E47 (1) (100) sun04 INS'.

Diagram 5: Overview in table form of the sales orders

You can see from column "A" if the displayed order is contained in the *archive add on* or in the SAP database. In the first case the column is qualified with "\*"; otherwise it is empty. By moving the cursor to a sales order and via double click on this order with the left mouse key you branch off to transaction <Display order>. If the selected order is contained in the SAP database, you branch off into SAP transaction VA02. Should it be contained in the archive you get to transaction /PBS/VA03 displaying the archived document analogue to SAP transaction VA03.

### 3.3. Document Display Transactions

In analogy to the SAP standard document transactions for inquiries, quotations, scheduling agreements, contracts, invoices and outbound deliveries (VA03, VA13, VA23, VA33, VA43, VF03 und VL03/VL03N) there are the PBS transactions /PBS/VA03, /PBS/VA13, /PBS/VA23, /PBS/VA33, /PBS/VA43, /PBS/VF03 and /PBS/VL03//PBS/VL03N.

The fields in the PBS document displays are the same as in the SAP transactions. For differentiating between R/3 database and archive data the archive data display was extended to include an archive indicator.

In this section we discuss the example of archive transaction /PBS/VA03. Diagram 6 shows the entry screen of this transaction, being identical to the one of SAP standard transaction VA03.

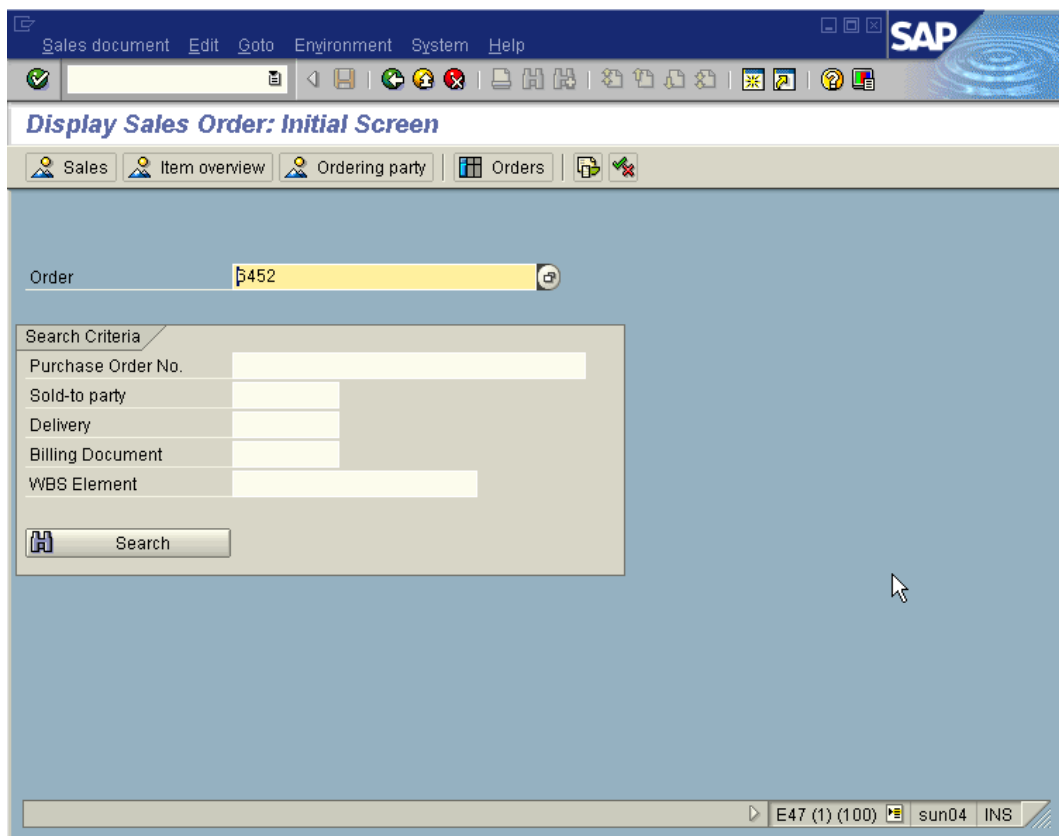


Diagram 6: Entry screen of transaction /PBS/VA03

After pressing the enter key the sales order is displayed as shown in Diagram 7.

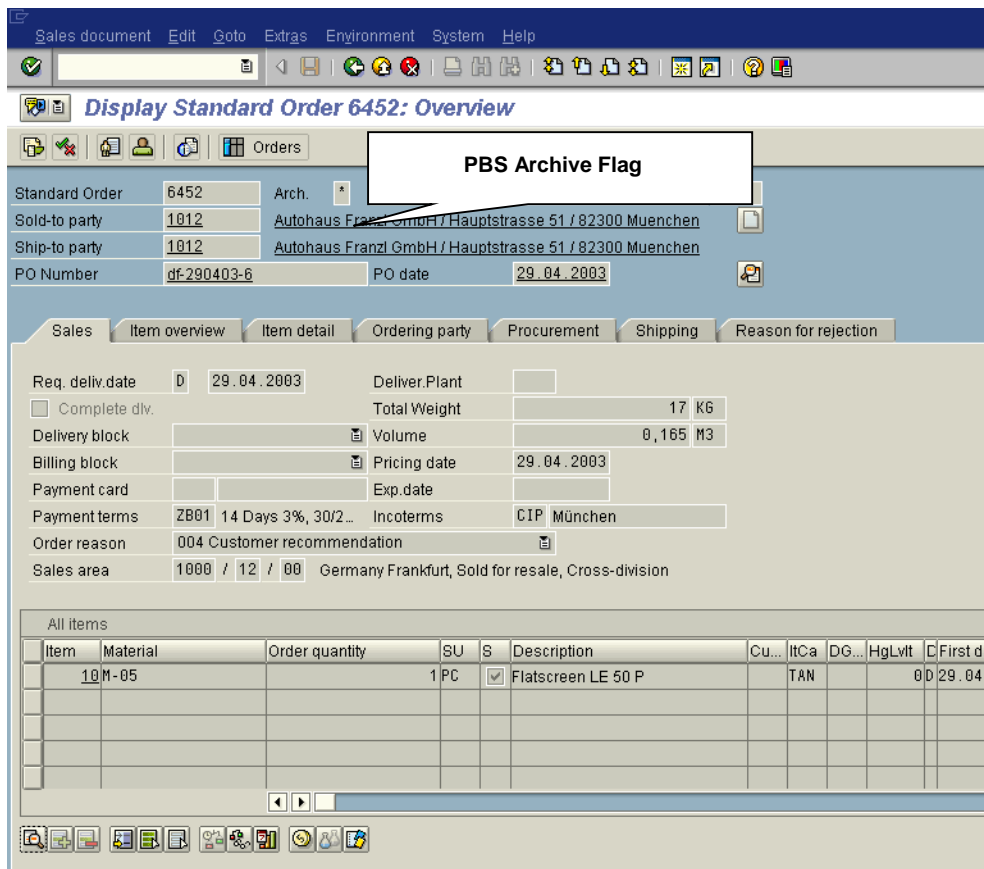


Diagram 7: Display sales order /PBS/VA03

Via the document flow, you can move from the transaction into the corresponding document display transactions, for example, of the delivery note or the invoice. You can also move to the document display of financial accounting (/PBS/FB03) if the *PBS archive add on CFI* for accounting documents is constructed. Diagram 8 shows the display of the document flow, again showing the archive indicator.

The screenshot shows the SAP Document Flow interface. At the top, there are menu options: Document flow, Edit, Goto, Environment, System, Help. Below the menu is a toolbar with various icons. The main area displays document details for a Standard Order (6452) and its associated items (Autohaus Franzl GmbH, Flatscreen LE 50 P). A callout box labeled 'PBS Archive Flag' points to the 'Date' column in the document list table.

Doc.	Date	Quantity	Unit	Material	Process
Inquiry 10000003 / 10	29.04.03	1,000	PC		Completed
Quotation 20000012 / 10	29.04.03	1,000	PC		Completed
Standard Order 6452 / 10	29.04.03	1,000	PC		Completed
Handling unit 1516 / 1	29.04.03	1,000	PC		
Delivery 80007494 / 10	29.04.03	1,000	PC		Completed
Handling unit 1517 / 1	29.04.03	1,000	PC		
WMS transfer order 1452 / 1	29.04.03	1,000	PC		Completed
GD goods issue:delvy 390000014 / 1	29.04.03	1,000	PC		complete
Invoice 90021693 / 10	29.04.03	1,000	PC		Completed
Accounting document 100000025	29.04.03	1,000	PC		Cleared
Invoice Cancellation 90021694 / 10	29.04.03	0,000			Completed
Accounting document 100000026	29.04.03	0,000			Cleared
Invoice Cancellation 90021694 / 10	29.04.03	1,000	PC		Completed
Accounting document 100000026	29.04.03	1,000	PC		Cleared
Invoice 90021695 / 10	29.04.03	1,000	PC		Completed
Accounting document 100000027	29.04.03	1,000	PC		Not cleared
Credit Memo Request 60000050 / 10	29.04.03	1,000	PC		Completed
Credit memo 90021696 / 10	29.04.03	1,000	PC		Completed
Accounting document 100000028	29.04.03	1,000	PC		Not cleared
Credit Memo Request 60000050 / 10	29.04.03	1,000	PC		Completed
Credit memo 90021696 / 10	29.04.03	1,000	PC		Completed
Accounting document 100000028	29.04.03	1,000	PC		Not cleared

Diagram 8: Document flow from sales order

In the initial screen of a transaction, the search for document numbers of archived documents using the F4 help (matchcode search help) is only possible in individual transactions, that are /PBS/VT03N (available from rel. 4.x) and /PBS/VI03 (available from rel. ECC 5.0) in the *PBS archive add on CSD*. Please note that the search has to be carried out via a qualified index of the *PBS archive add on CSD* for performance reasons so that unlike in the analogue SAP standard transaction required entry fields are available in the PBS search helps.



## 4. ABAP Interfaces to the PBS archive add on CSD

You can access all data stored in the *PBS archive add ons* with ABAP means. The following chapter describes the methods and auxiliary programs for the access to the data archived with the *archive add on CSD*.

There are several ways to access this data:

- ABAP routines in the central access reports
- logical data bases
- Function module /PBS/SELECT\_INTO\_TABLE (or 3.x: SELECT\_PBS\_INTO\_TABLE)

### 4.1. Access via ABAP Routines

All important routines required for the access to archive data are stored in the ABAP report /PBS/CSD\_READ (respectively 3.x: ZZCVREAD. The methods of how to access the PBS archive can be copied from the archive reading programs /PBS/CSD\_TSRD and /PBS/CSD\_SCAN or the example reports for the archive access – can be called via transaction code /PBS/ZVT2.

## 4.2. Logical Databases

The following logical databases are available: in the left column of the table the logical SAP databases are listed for which PBS provides own pendants for SAP releases 3.x and 4.x (2. and 3. column). With the logical PBS databases the archived data in the *PBS archive add on* is read in addition to the resident data in the database.

SAP Standard	PBS Release 4.x	PBS Release 3.x	Name
VAV	/PBS/VAV	ZAV	Orders
VLV	/PBS/VLV	ZLV	Deliveries
VFV	/PBS/VFV	ZFV	Invoices

## 4.3. Access via Conversion Tool

ABAP reports using the SELECT command to access the R/3 database can be modified with the PBS Conversion Tool in a way that they can also access the data from the *PBS archive add on*. For this purpose, function module **/PBS/SELECT\_INTO\_TABLE** (respectively 3.x: **SELECT\_PBS\_INTO\_TABLE**) is used; this function module accesses the archive add on and displays the data records of the requested table in an internal table.

Features and handling of the **PBS Conversion Tool** are described in a separate manual.