

User Manual

HealthSense BMI Personal Scale

Model : PS 150

Connect with HealthSense



HealthSense Products



HealthSense Products



HealthSense Products



- Thank you very much for selecting the HealthSense BMI Personal Scale PS 150
- Please do read the user manual carefully and thoroughly so as to ensure the safe usage of this product, keep the manual well for further reference in case you have problems.

Table of Contents

Safety Information

Your Scale and Its Environment.....	2
General Instructions	2

Overview

General Instructions	3
Device Components	3
LCD Display	4

Initial Start-Up

Insert the Batteries	5
Setting the Height	6

Start Measuring

Daily Measurement	7
-------------------------	---

Troubleshooting

Error Prompt	8
--------------------	---

Specifications	9
----------------------	---

Maintenance	10
-------------------	----

Warranty	10
----------------	----

♥ Your Scale and Its Environment

To ensure your safety as well as the service life of your scale, please avoid using the scale under the following circumstances:

- Concurrent use of this device and implantable medical electronic instruments, e.g. Cardiac Pacemaker
- Concurrent use of this device and wearable medical electronic instruments, e.g. electrocardiograph
- Concurrent use of this device and other medical electronic instruments for life support, e.g. mechanical heart
- Slippery floor such as tile floor
- Jumping onto the platform immediately after bath or with wet hands
- Near a cell phone or microwave oven

Avoid storage in the following locations:

- Where there is water
- Where the device may be exposed to extreme temperatures, humidity, moisture, direct sunlight, dust, or salt air
- Where there is risk of shock or drop
- Where you store chemicals or full of corrosive gases
- Where in reach infants or children

♥ Efficient Use of Your Scale

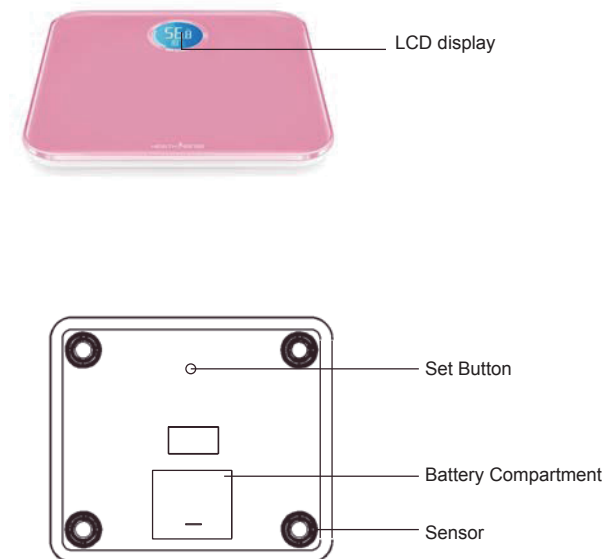
To ensure the accuracy of measurement, please follow below instructions when you start measurement.

- Place the scale on a flat, hard surface. Soft surface such as carpet will affect the performance of the scale.
- Step onto the platform with bare feet. Stand still and keep full contact with the electrodes until the measurement is complete.
- Start measurement at least two hours after wake up or dinner.
- Avoid measurement immediately after strenuous exercise, sauna or bath, drinking and dining.
- Always start measurement in the same time slot and on the same scale located on the same flat, hard surface.

♥ General Instructions

HealthSense BMI Personal Scale PS 150 applies SENSE ON technology and BMI function. It is delicate and trendy, convenience for using. It is not necessary to turn on or turn off the scale, just stand on the scale for measurement.

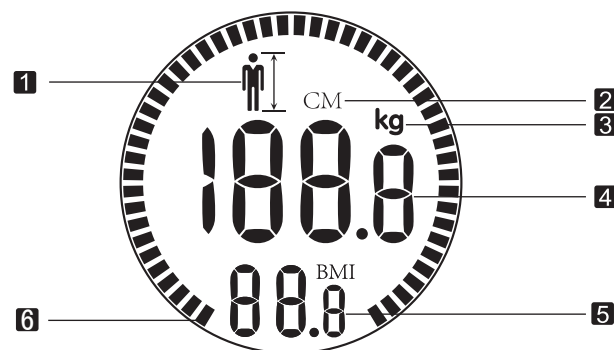
♥ Device Components



♥ List

1. HealthSense BMI Personal Scale PS 150
2. Four AAA-size Carbon Batteries (1.5V each)
3. User Manual
4. One Year HealthSense warranty card

♥ LCD Display



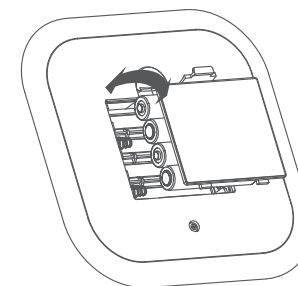
- 1 Height 2 Height Unit 3 Weight Unit 4 Weight Value
 5 BMI Index 6 BMI Level Index

♥ Insert the Batteries

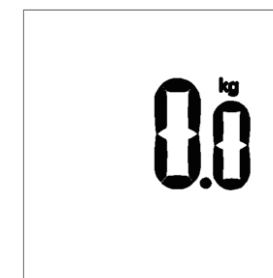
- Open the battery cover at the back of the scale.

- Insert the batteries (4 x 1.5V AAA) into the battery compartment according to the polarity indications marked inside the compartment.


* The digits "1888" will be shown on the LCD.



- Close the battery cover and wait until the value "0.0kg" is shown on the LCD.



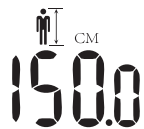
CAUTION

- When the symbol  appears, the device will power off in four seconds. Then replace with a new set of batteries. Please replace all four batteries at the same time. Do NOT mix the old batteries with the new ones.
- Used batteries are hazardous waste. Do NOT dispose them together with the household garbage. Please refer to the local ordinances and recycling instructions regarding disposal of the used batteries.

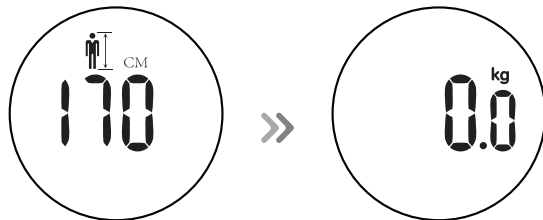
Initial Start-Up

♥ Setting the Height

When it is the first measurement, or after changing the batteries, you need to set your personal height, the data will be stored in the scale automatically, in order to do the accurate BMI judgement.



1. Press the SET button, the LCD displays the last setting height, If it is the first time using it, or after changing the batteries, it will display the default height 150 cm.



Start Measuring

2. Press the SET button for more than 3 seconds until the 'height' value blinks then set your height.
 - a. The height digit will increase 1 for each press. Press long to increase the digit fast. The range of height is 130 to 199 cm.
 - b. After setting your height, it will automatically log out within 5 seconds.

Warm tips:

If the height has changed, please reset the height, so that you can have the accurate BMI judgement.


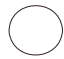

♥ Daily Measurement

- With original SENSE ON patent technology, the scale will automatically switch on as you step on the platform barefooted.
- Stand still and keep full contact on the scale until the LCD displays the weight, the value will blink while the level bar lights orderly.
- Once the measurement is steady, the level bar will stop at the related BMI level area and display BMI value. It will shutdown automatically.



Troubleshooting

♥ Error Prompt

Error	Description	Solution
	Weight overload. Maximum weight capacity is 150kg	Get a higher range of weighing scale.
	Low Battery. The device will shut down in 3 seconds.	Replace all four batteries at the same time. Replace authorized batteries only.
	The measurement result includes the weight of the scale.	Do the measurement again.
The BMI level result is abnormal	1. The value setting of height is not correct. 2. The height has changed, but haven't reset the height.	Please reset the correct height value.
After standing on the scale, the LCD doesn't light.	1. Used batteries. 2. The batteries are not inserted correctly.	1. Change the batteries. 2. Insert the batteries according to the polar indication in the battery slot.

Specifications

♥ Specifications

Product Name	BMI Personal Scale PS 150
Dimension	Scale: 280x245x22.5mm
	Panel: 280x245x5mm
Net Weight	Approximately 1.25kg (Excluding the dry cells)
Display	Blue LCD with White Backlight V.A.: 59x59mm
Measurement Unit	Kilogram
Measurement Range	150kg
Division	0.1kg
Accuracy	0-50kg: ±0.3kg; 50-100kg: ±0.4kg; 100-150kg: ±0.5kg;
Working Environment	Temperature: 0 °C to 40 °C Humidity: ≤90% RH Pressure: 80kPa to 106 kPa
Storage Environment	Temperature: -20 °C to 60 °C Humidity: ≤90% RH Pressure: 50kPa to 106 kPa
Power Source	6V (Four AAA-size Carbon Batteries)
Auto-ON	SENSE ON technology
Auto-OFF	About 8-12 seconds while no operation About 13-17 seconds after the weight data is locked
Accessories	1. Four AAA-size Carbon Batteries 2. User Manual and Warranty Card

About the Accuracy of This Product

- This product passes strict inspection before delivery and therefore its accuracy is guaranteed by the manufacturer. Please refer to the above table for the descriptions on accuracy.
- This product is specially designed for body fat analysis as well as weight measurement. It should NOT be used by anyone during the process of transaction for verification of goods' weight.

Maintenance

♥ Maintenance

When carrying out usual maintenance, please ensure practice of the following Do's and Don'ts:

- DO use a dry soft cloth to wipe the dust.
- DO use a wet soft cloth, dipped into water and wrung out, to wipe the dirt. Then use a dry soft cloth to dry up the device.
- DON'T wash the device with water or immerse it in water.
- DON'T use propellant, abrasive or other chemicals to wipe the dirt in avoidance of discolor or malfunction.
- DON'T disassemble this device.

♥ Warranty

- HealthSense warrants its products free of defects in materials and workmanship in normal use for a period of ONE year from the date of retail purchase.
- This warranty does NOT cover damages caused by misuse or abuse, including but not limited to:
 - Failure caused by unauthorized repairs or modifications;
 - Damage caused by shock or drop during transportation;
 - Failure caused by improper operation inconsistent with the instructions stated in this user manual;
 - Malfunction or damage from failure to provide the recommended maintenance;
 - Damage caused by improper use of power supply.
- Should this device require maintenance (or replacement at our option) under warranty, please deliver the original package to HealthSense India. Please return the store receipt (with the retail purchase date) and a note with reasons to return on it as well.

