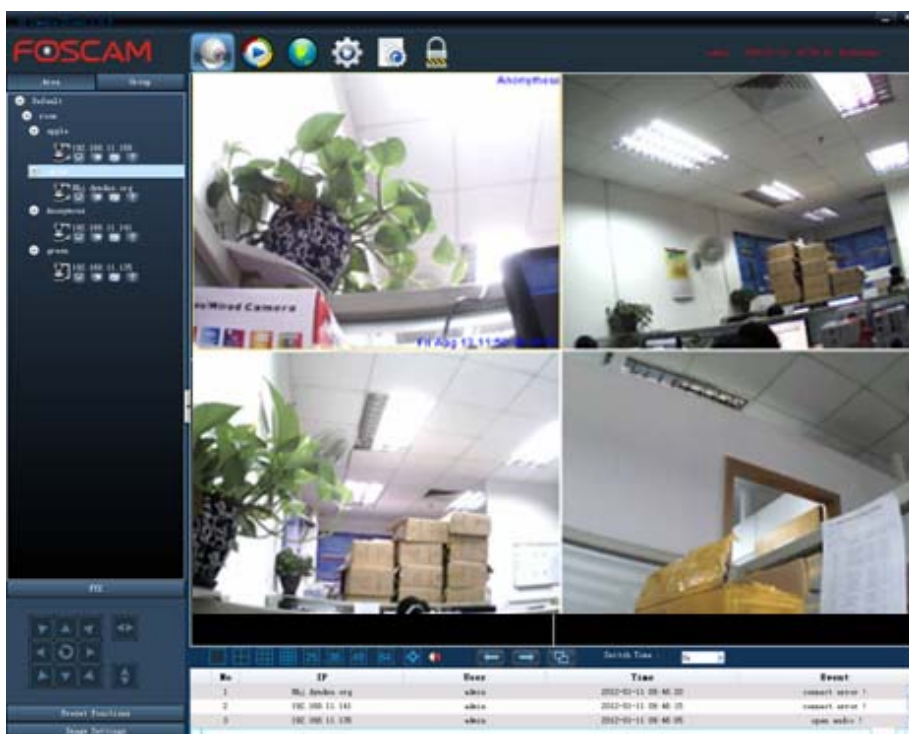


MJPEG Camera Client User Manual



CONTENTS

1 WELCOME	3
1.1 Features	3
1.2 Installation Requirements	3
1.3 Software Installation	3
2 Software Operation	5
2.1 Tab bar	6
2.2 Device list	6
2.3 PTZ	8
2.4 Preset	9
2.5 Image settings	10
2.6 Live view window	11
2.7 Device information	12
3 Settings	12
3.1 Add cameras to the client	12
3.1.1 Alter the name of existent area/ delete one existent area	13
3.1.2 Add cameras to the client	13
3.1.3 Alter information of the added cameras	15
3.1.4 Delete one added cameras	16
3.2 Set Groups	16
3.2.1 Add groups	16
3.2.2 Add cameras to one group	17
3.2.3 Delete one group	17
3.2.4 Operate Groups	17
3.3 System	18
3.3.1 Alter the login username and pwd of one added camera	18
3.3.2 Alter the network IP/HTTP Port of the added camera	19
3.3.3 Wireless LAN Settings	20
3.3.4 Options	21
3.3.5 LOG	21
3.3.6 Backup	21
3.3.7 System	22
3.3.8 Miscellaneous	22
3.4 Record and Alarm Management	22
3.4.1 How to configure alarm?	22
3.4.2 How to configure plan record?	24
3.5 Others	25
3.6 Alter the login username and password of the client	26
4 Play back record files	27
4.1 Search/play my record files	27
4.2 The Play back UI	29
5 Map	30

6 How to use the Log	36
7 Log out the current user	36

1 WELCOME

The client is a management software provided by the manufacturer. It provides the central control of monitoring, video capture, alarm recording, etc for multiple IP cameras on LAN or WAN.

1.1 Features

- ◆ Monitor 64 cameras at one page
- ◆ Supports Video Playback
- ◆ Supports Preset, you can set 16 presets for one camera
- ◆ Supports PTZ
- ◆ Supports Group Switch
- ◆ Supports Logs Management
- ◆ Motion detection activates alarm
- ◆ Multi-level users management with password protection
- ◆ Supports Map alarm
- ◆ Supports three record methods: alarm record, plan record, manual record

1.2 Installation Requirements

PC: Pentium IV or above

CPU: 2.0G or above

Memory size: 2.0G or above

Hard disk: 120G or above

Suggested display screen: 1280 x 768

Suggested OS: Windows XP/ Windows 7

1.3 Software Installation

(1) Insert the CD in the CD drive of your computer. Open the CD; find the software per instructions; If your PC's OS is Windows7, please install this software: "Foscam IP Camera Client Windows 7.msi", if your PC's OS is Windows XP, pls install "Foscam IP Camera Client Winxp.msi".

(2) Double click the software and install the program.



Figure1.1

Click Next till you see the following screen:

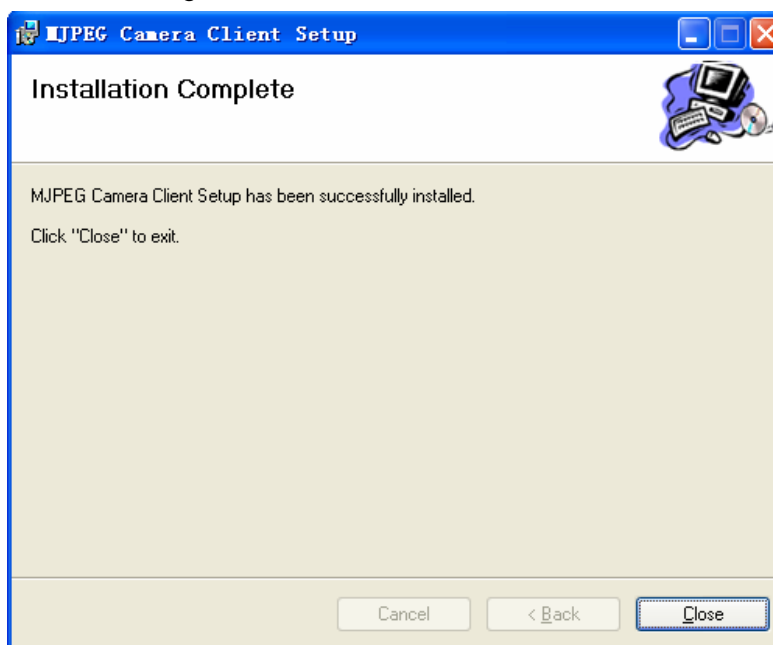



Figure1.2

Click Close and complete the software installation. An icon  appears on the desktop automatically after a successful installation.

Note: Sometimes the program will be treated as antivirus, so before installing, pls add the software as trusted program on your computer.

2 Software Operation

Double click the icon  and it will pop up the follow screen:



Figure2.1

The default user and password are all admin, click Login and you will see the following UI:



Figure2.2

First time you login the software, the whole video window is black, you need to add cameras to it (please read chapter 3 about how to add cameras).

The UI can be divided into seven parts: 1 TAB bar 2 Device list 3 PTZ 4 Preset
5 Image settings 6 Live view window 7 Device information

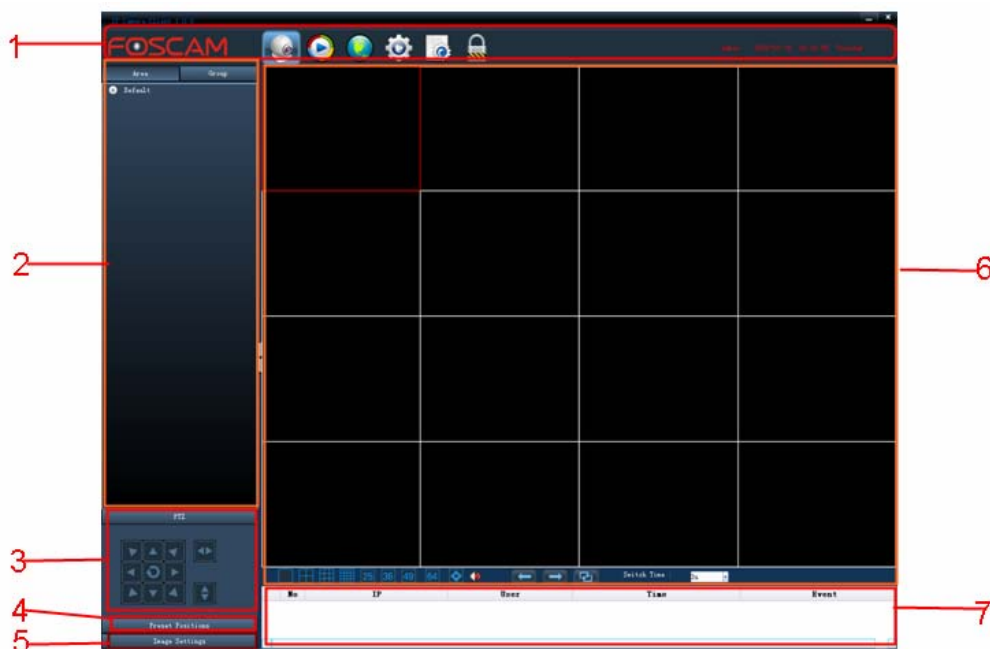







Figure2.3

2.1 Tab bar

-  Click it and back to the live view screen
-  Click it and back to the Playback UI
-  Click it and back to Setting UI
-  Click it and back to the LOGS UI
-  Log off and switch users

2.2 Device list



After adding device to the client, you can see the camera in the Device list (pls read chapter3.1 about how to add cameras). There are two modes: Area and Group.


Area: You can see all added cameras and which area they belong to. Such as the picture below, 192.168.11.249 belongs to “test” area.



There are five icons below one camera name, such as the following picture. “apple” is the added camera’s name, you can change another name in the client(pls read chapter 3.1.3 about how to change the camera name) .




Figure2.4

: Click the icon and the camera will be connected automatically. If connect successfully, the icon will be changed to . Click it again and disconnect the camera.

: Click it and you can see the live view in the client. Click it again and stop playing.

Note: If you want to see one camera's live view, first click the icon  to connect the camera, then click view icon .

: Record. Click it and do manual record. You can see a blue record icon in the video. Click it again and stop recording. The default storage path is the first disk on your computer. You can change another path, pls read chapter 3.4.1.

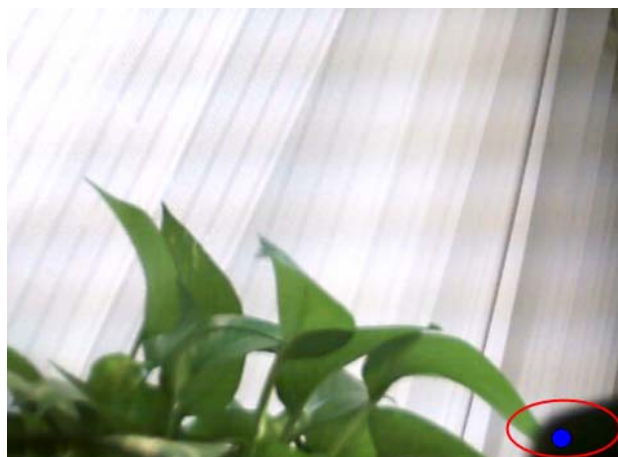




Figure2.5

: Snap. Snap the current video to a predetermined path. The default storage path is D disk (the path is different from the record file storage path). You can change another path, pls read chapter 3.5.

:Talk. Click the icon and then talk to the camera (with the microphone plugged in your computer), people will hear your talking around the camera. The sound will come out from the built-in or outer speaker of the camera. Make sure the camera has built-in speaker or outer speaker.

Group: Display the group information. Make sure you have configured the Group.

2.3 PTZ

Select one connected device, operate PTZ and the camera will rotate at eight directions. Make sure the camera has connected with/built-in PTZ.



Figure2.6



: Click the icon and the camera will rotate up-left.



: Click the icon and the camera will rotate up.



: Click the icon and the camera will rotate right-down.



: Click the icon and the camera will rotate left.



: Click the icon and the camera will rotate right.



: Click the icon and the camera will rotate left-down



: Click the icon and the camera will rotate down.



: Click the icon and the camera will rotate right-down.



: Click here and the camera will horizontally &vertically rotate and then stop at the center.



: Click the icon and the camera will horizontally rotate, click it again and stop rotating.



: Click the icon and the camera will vertically rotate, click it again and stop rotating.

If you click the horizon or vertical cruise button only once, the camera will patrol circles that you set before and then stop. You can set the patrol circles in the web UI or in the client.

You can change the rotation speed in the web UI or in the client also.

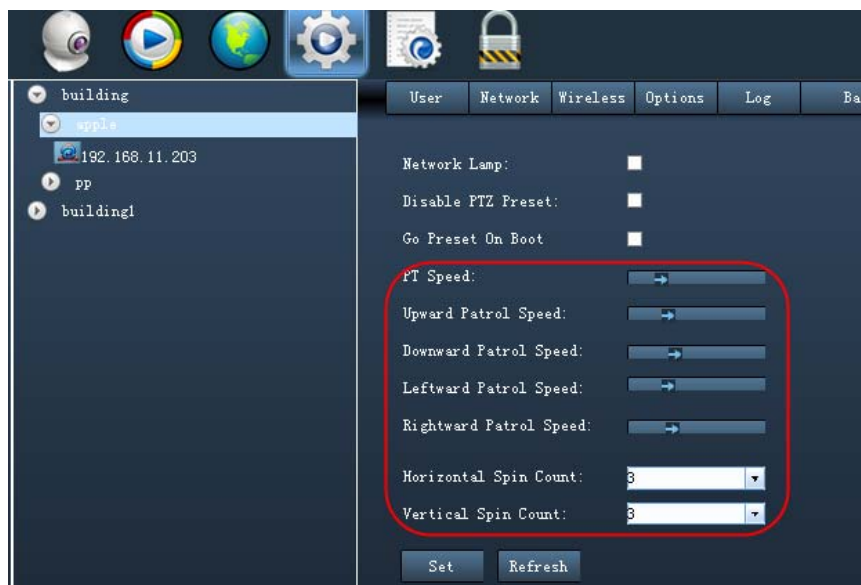


Figure2.7

Note: 1 Before operating PTZ, you need to click one camera's live video to choose the camera.

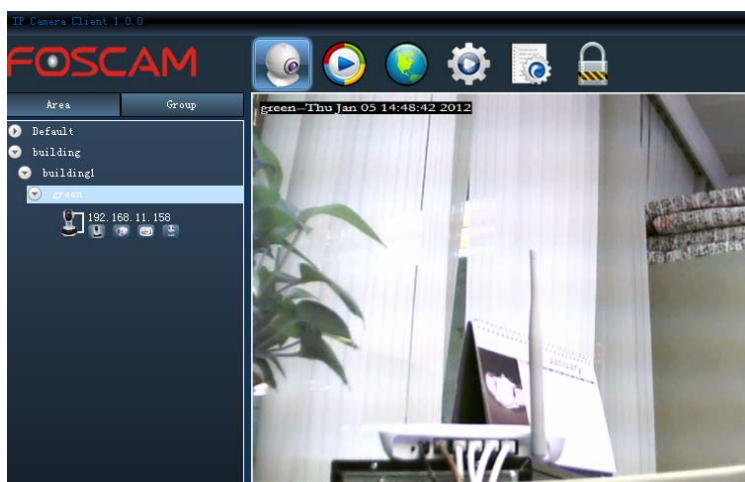


Figure2.8

2 Make sure the camera has built-in or connected with PTZ.

2.4 Preset

You can set 16 preset positions for one camera, but make sure the camera has built-in or connected with PTZ.



Figure 2.9

Select one connected camera, once you have determined the viewing location, click the button “Preset”. This location can be retrieved by selecting the number assigned and clicking the “Go” button.

NOTE:1 Make sure the camera has built-in or connected with PTZ.

2 Before setting Preset positions, you need to select one connected camera’s live video.

3 Make sure you have not disabled the camera’s PTZ Preset in the client or in the web browser.

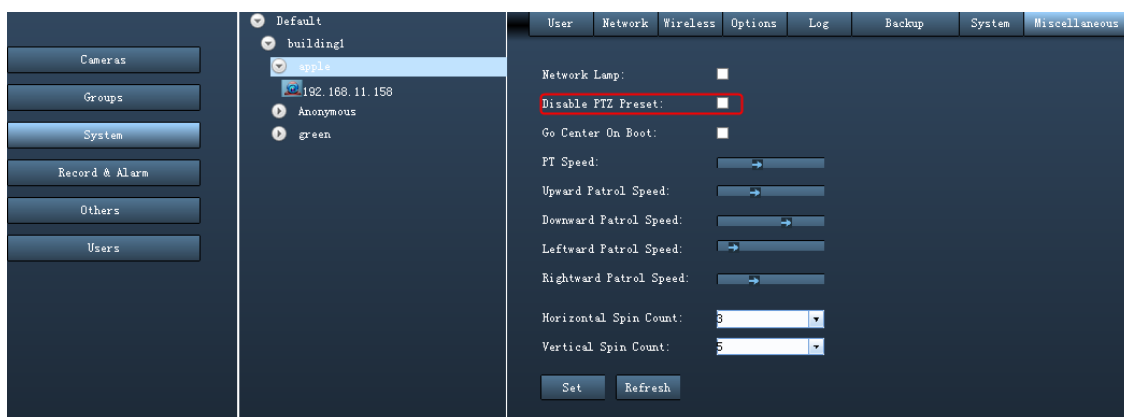


Figure2.10

2.5 Image settings

Brightness, contrast, hue and saturation are used to adjust the quality of the video.

Select one connected camera’s live video then drag the slide bar to adjust the parameters.

Resolution: The bigger the value is, the video will be clearer.

Flip & Mirror : Show a reverse image .Make sure your camera support this function, or else it has no effect after you select it.

OSD: OSD is used to add timestamp on all videos.

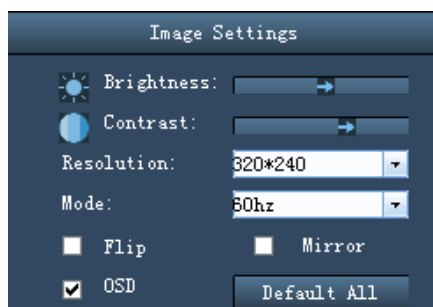



Figure2.11


2.6 Live view window






Figure2.12


There is a lab bar below the video window, look the above picture:

 Multi-device window: The client can monitor many cameras at one page, here you can choose the display num. The display num has much relation with PC. More num, higher requirement for PC.


 Click the icon, the client will be full-screen. Press ESC and exit the full-screen.


 : Select one camera, click the icon and you can hear the sound around cameras. Make sure you have opened the audio and the camera supports it. ( Open state  Close state)

 Pre group. Click it and preview the videos of last group.

 Next group. Click it and preview the videos of next group.

NOTE: Make sure you must have set groups for the client and click start group switch button before clicking last/next page.

 **Switch button.** If you have set group, click this icon, you can see the page shown one by one.

 : The interval time between last page and next page. Choose switching time and click switch button, the pages will be showed automatically. Make sure you have configured the group.

2.7 Device information

When you do some operation, here you can see the results. Such as the following picture:

No	IP	User	Time	Event
1	192.168.11.158	admin	2012-01-10 16:37:29	Ipcamera can not support audio !
2	192.168.11.158	admin	2012-01-10 16:37:28	open video !
3	192.168.11.158	admin	2012-01-10 16:37:27	login successfully !

Figure2.13

3 Settings

Before using the software, you need to add devices to the client. Click the icon  and back to Settings UI.

3.1 Add cameras to the client

The default device list is null, you need to add Area first then add cameras to the area.

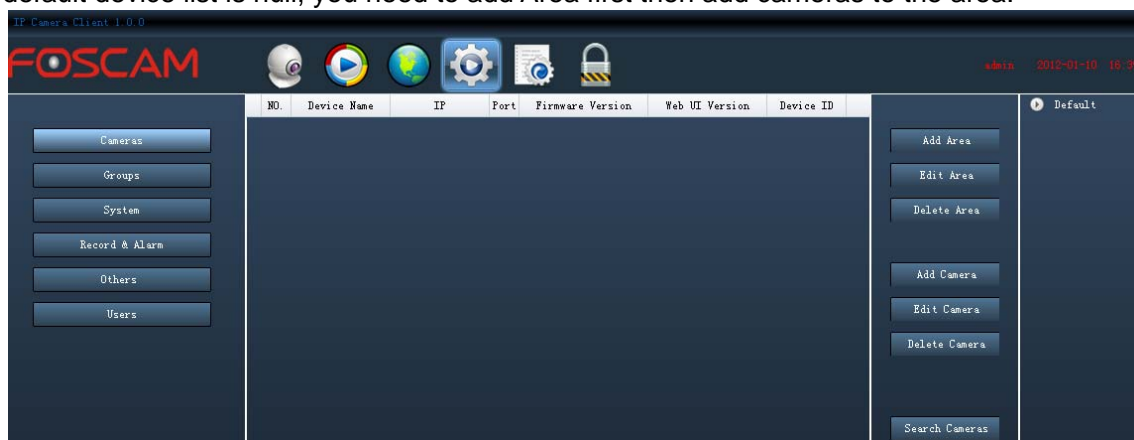


Figure3.1

Click Add Area, you will see a dialog box. Enter the area name and click OK.

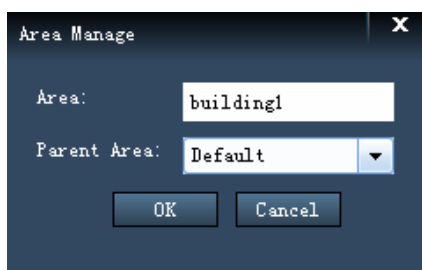


Figure3.2

3.1.1 Alter the name of existent area/ delete one existent area

If you want to change another name for the existent area, click the area name and choose

Edit Area

. Enter the new area name and click OK.

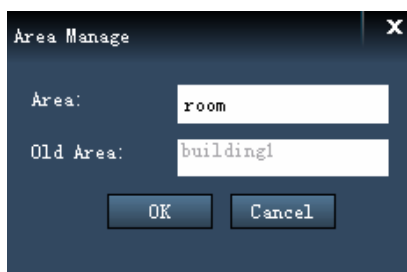


Figure3.3

If you want to delete one existent area, click the area name and choose

Delete Area

Note: If you delete one area, all devices that you have added to the area will be deleted also.

3.1.2 Add cameras to the client

The following steps are required before adding cameras to the client:

- 1) Install the IP Camera(s) which want to be monitored.
- 2) Login the IP Camera(s) by web browser and set the IP address, port, username & password and make sure the camera can be accessed by browsers
- 3) DDNS setting is a plus whenever you want to add the devices by WAN
- 4) Close the IP Camera Tool program, or else you can not search any camera in LAN.

Add cameras in LAN

Search Cameras

: Click this icon, the software will search all device in LAN.

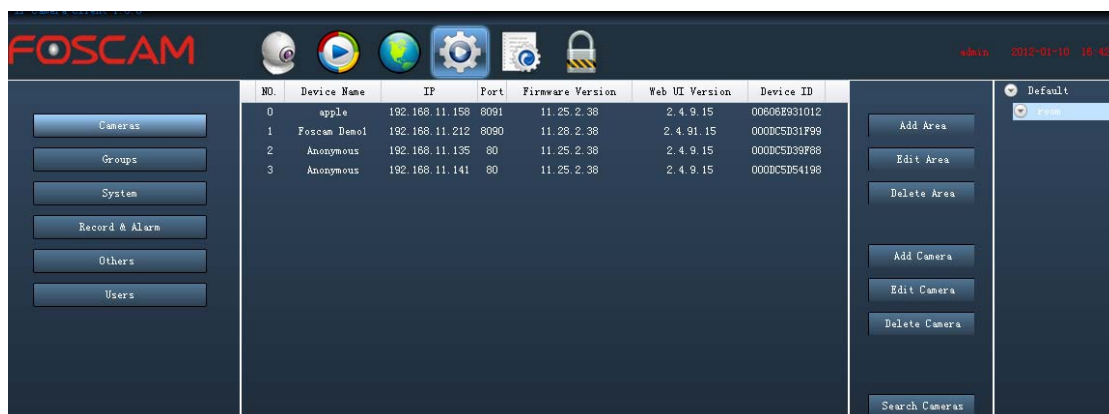


Figure3.4

Click the searched device, the device column turn to light blue.

NO.	Device Name	IP	Port	Firmware Version	Web UI Version	Device ID
0	apple	192.168.11.158	8091	11.25.2.38	2.4.9.15	00606E931012
1	Foscam Demol	192.168.11.212	8090	11.28.2.38	2.4.91.15	000DC5D31F99
2	Anonymous	192.168.11.135	80	11.25.2.38	2.4.9.15	000DC5D39F88
3	Anonymous	192.168.11.141	80	11.25.2.38	2.4.9.15	000DC5D54198

Figure3.5

Then click **Add Camera**, it will pop-up a dialog box.

Figure3.6

Fill in the device information. IP, User name, port and password must be the same as the camera accessed by web browsers. You cannot change Channel num, and all cameras of our company only support Channel 1. The Area cannot be null.

By this way, you can add cameras in LAN one by one.

Note: One camera's Device name must be different from another. The IP Camera Tool must be closed.

Add cameras in WAN

Make sure the camera you want to add can be accessed by WAN IP or domain name in web browser. First click Search cameras button and then click Add camera. It will pop up the following screen.

Here IP address will be instead by a domain name or WAN IP.

Figure3.7

If the camera has been added successfully, you will see it under the area.

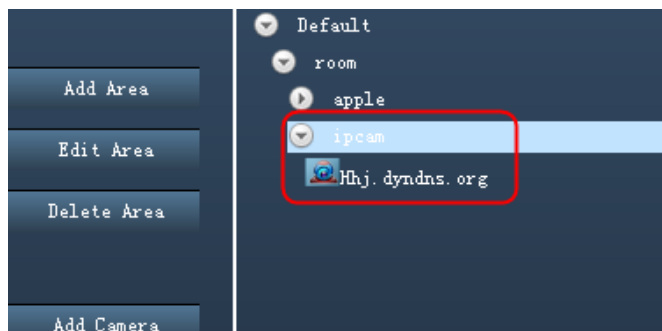
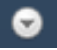


Figure3.8

Click the icon  before the added camera name, you will see the IP or domain name.

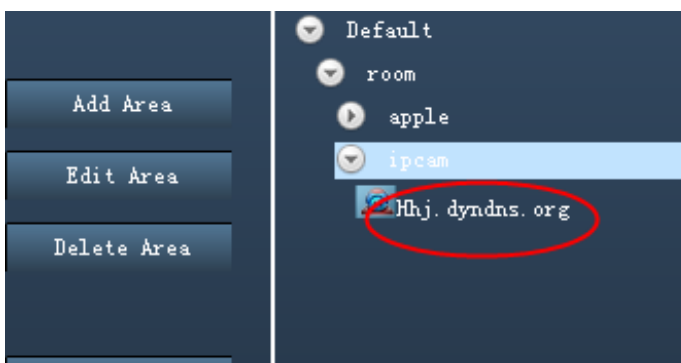


Figure3.9

3.1.3 Alter information of the added cameras

Edit Camera

: Click it and change some information about the added camera.

Firstly you need select it's name not IP under the area it belongs to. Then click "Edit Camera", it will pop up a dialog box.

 A screenshot of a 'Camera Manage' dialog box. It contains the following fields:


- Camera: apple
- IP: 192.168.11.158
- User: admin
- Area: room (dropdown menu)
- Channel: 1
- Port: 8091
- Password: (empty field)

 At the bottom right, there are 'OK' and 'Cancel' buttons.

Figure3.10

You can change the device name, port, user name and password. After you changed, make sure the camera can be accessed by web browser. If you have filled the wrong information and cannot see the view in the live view UI, you had better delete it from the area and re-add it again.

3.1.4 Delete one added cameras

Select one camera's name not IP under the area it belongs to, and click the icon , you can delete it.

3.2 Set Groups

You can pre-view the group page one by one if you set the Group correctly.

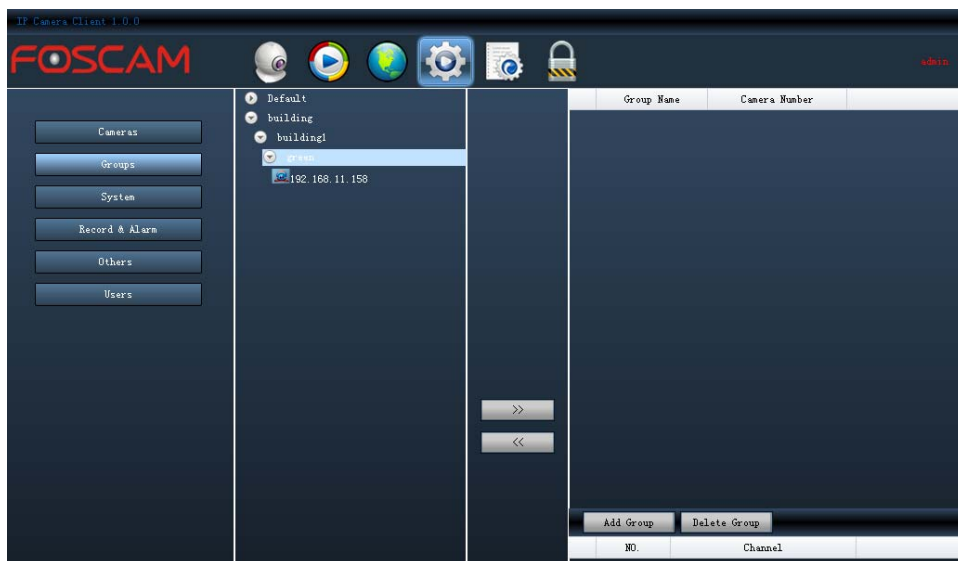
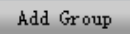


Figure3.11

3.2.1 Add groups

: Click this icon and add group.

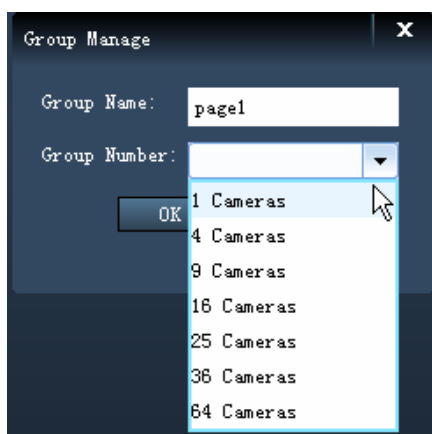


Figure3.12

Fill in a group name and choose the Group num for one page. Click OK and save it.

	Group name	Channel num
0	pagel	4

Figure3.13

3.2.2 Add cameras to one group

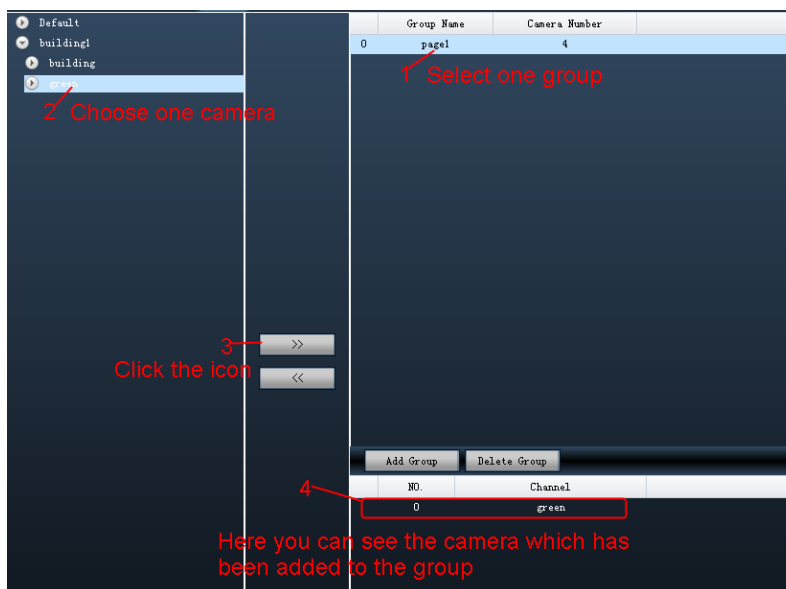
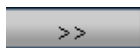


Figure3.14



Add the camera channel to one group.



Remove one camera channel form one group

Note: One camera can only be added one time.

3.2.3 Delete one group

Delete Group: Delete one existent group.

3.2.4 Operate Groups

If you have configured well, back to the Live view UI(click the icon )→Group list.



Figure3.15

Fill in a switching time, and click the Auto button , the group will be showed one by one.



Figure3.16

Of course you can do manually by clicking  the pre/next page button.

Note:If you want to see the view, you need to connect the camera first and click the view button.



Figure3.17

3.3 System

Here you can do basic settings for the added device.

3.3.1 Alter the login username and pwd of one added camera

Click User and you can alter the login account, password and authority for the camera that added to the software.

Double click the IP and click the account you want to change, entering new name, password and authority, then click Set and save it.

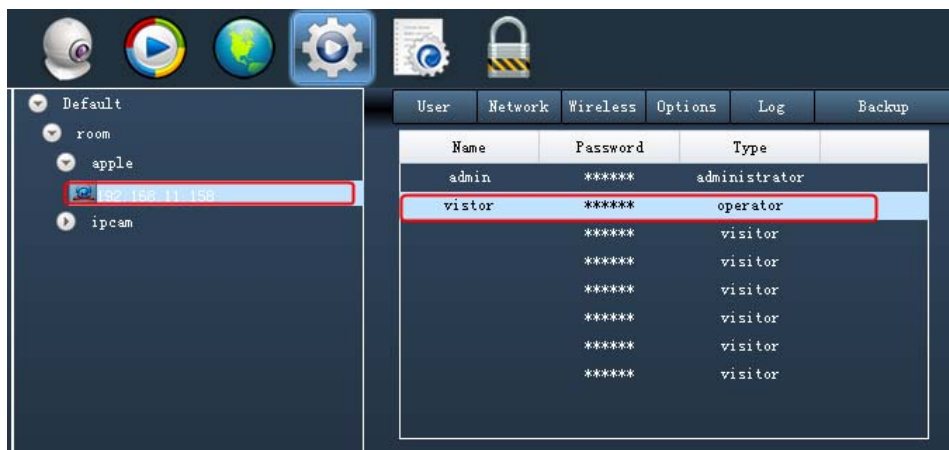


Figure3.18

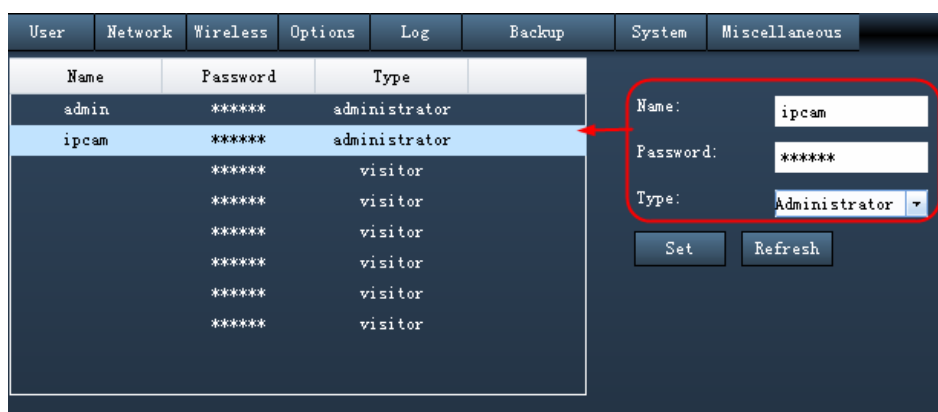


Figure3.19

Note: If you have changed the added camera's username and password which be used to add the camera, you need to re-add the camera again in the Cameras UI.

3.3.2 Alter the network IP/HTTP Port of the added camera

Double click the IP that you want to change. If you choose Enable NET, the camera will obtain IP from DHCP Server automatically. If you don't enable it, you can set it manually. Click set after finishing all settings.

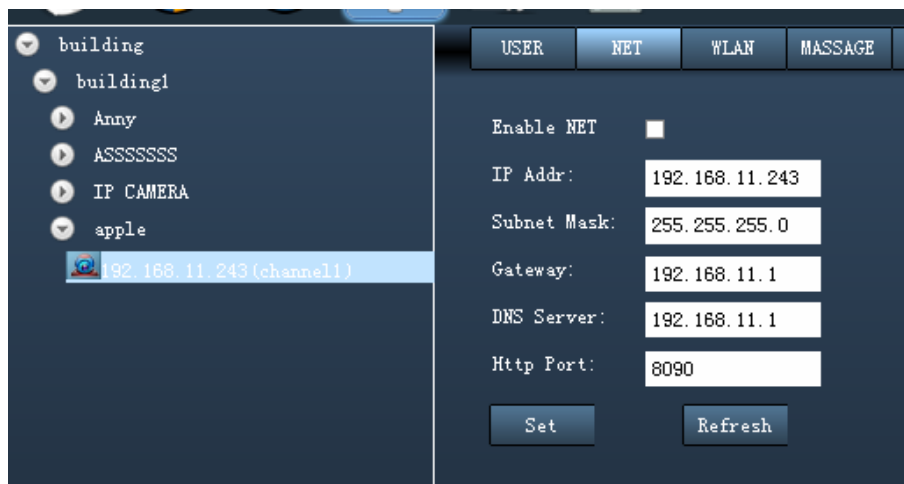


Figure3.20

Note: 1 After altering the NET settings, you need to reboot the camera and reboot the client, or else the settings will not take effect.

2 After altering the NET settings, you should re-add the camera again in the “Camera” UI.

3 Make sure the camera can be login by the web browser again after altering the IP.

3.3.3 Wireless LAN Settings

Double click the IP of the added camera and set wireless settings for one camera, Make sure the camera supports wireless mode.

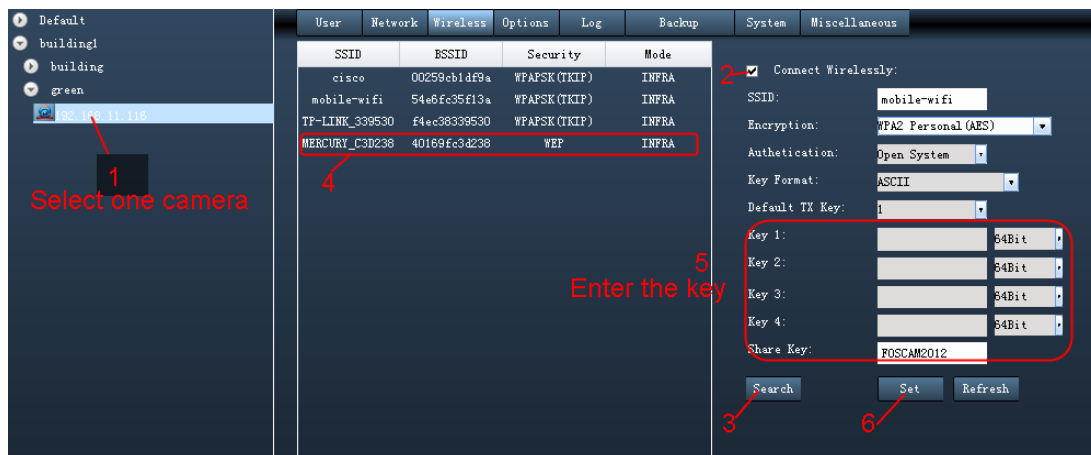


Figure3.21

Make sure that SSID, Encryption and the key or share key you filled in for the camera are exactly the same for your router. (For more details: read the camera's User Manual)

Note: 1 After altering the Wireless LAN Settings, you need to reboot the camera and plug out the network cable, or else the settings will not take effect.

2 You had better set a static IP for the camera, or else when the camera reboot and it will obtain a dynamic IP from DHCP and you need to re-add or edit the camera again in the Camera UI if you want to view it continue .

3.3.4 Options

Options contains six parts: ADSL, UPnP, DDNS, MAIL, MSN and FTP. You can read the camera's user manual about how to set.



Figure 3.22

3.3.5 LOG

The log record shows who accessed the camera.

User	Network	Wireless	Options	Log	Backup	System	Miscellaneous
Log							
				Tue, 2012-01-10 16:34:24	admin	192.168.11.251	access
				Tue, 2012-01-10 16:37:37	admin	192.168.11.251	access

Figure 3.23

There is a Export button at the bottom, click it and enter the file name and storage path, all record will be exported to a .txt file.

3.3.6 Backup

Backup menu contains 4 parts: Upgrade Firmware, Upgrade Web UI, Backup Settings and Restore Settings. For more details: you can read the camera's user manual.

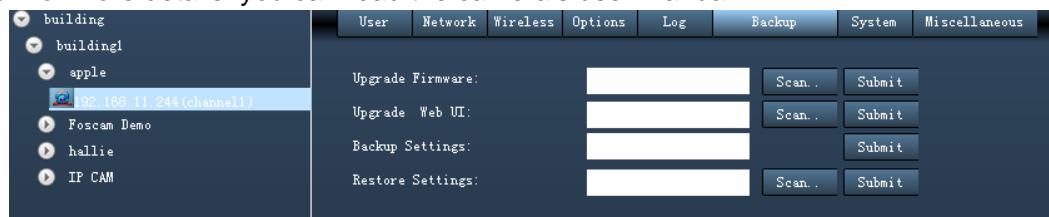


Figure3.24

Note: Don't shut down the power during upgrade.

3.3.7 System

Some basic settings about the IP Camera. For more details: read the camera's user manual.



Figure3.25

3.3.8 Miscellaneous

Some settings about PTZ, but make sure the camera has built-in or connected with PTZ, or else it has no effect.

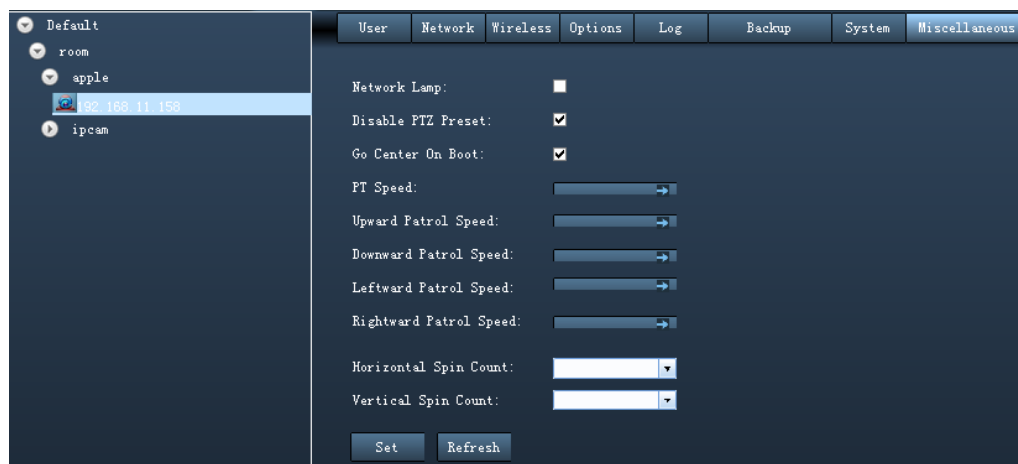


Figure3.26

3.4 Record and Alarm Management

If you enable the Alarm settings, the camera will alarm when motion is triggered. Set the plan record, and the camera will recording during the time range you set.

3.4.1 How to configure alarm?

Do the following steps:

1 Verify the alarm time

First you should select one camera by double click the IP address not its camera name, then select Alarm. Third choose one day, Forth set the alarm time. Finally click Save.

By this way, you can set alarm time for other days.



Figure3.27

2 the camera will adopt many ways when motion is detected

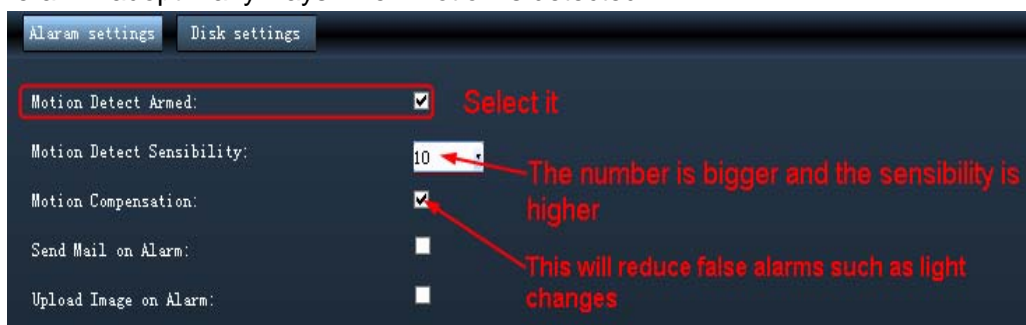


Figure3.28

The camera will alarm when motion is triggered. And it will start recording automatically, you can find the recording file in the folder which you set(read step 3).

If you want to receive images when motion is detected, you must set **Mail Service Settings** first.



Figure3.29

Upload images to FTP.

If you want to receive images when motion is detected, you must set **FTP** first.

Click Save button after finishing all settings.

3 The storage path

The client program will search all disks of your PC, and the default path is all disks. If you choose many disks as the storage path, the record file will be stored to the next disk automatically when the

current remaining storage space is less than the space you set (the default space is 1G).

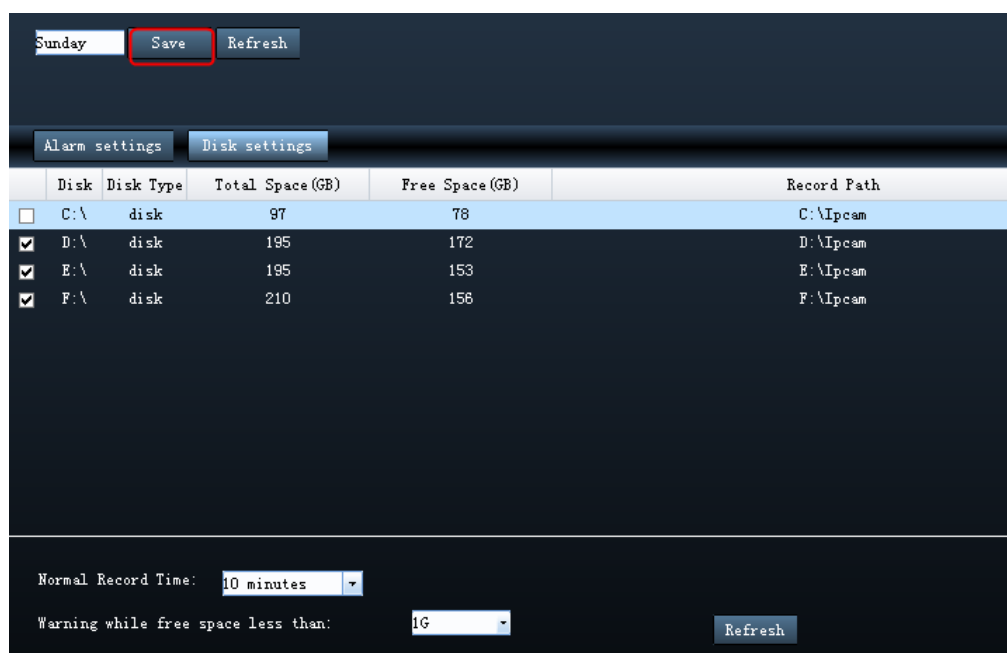


Figure3.30

Normal record time: The plan record and manual record default time is 10 minutes, you can change the sustain time here. But the alarm record only last 1 minute, you cannot change it.

Recovery space while free space less than: The default space is 1G.

Click Save button after finishing all settings.

3.4.2 How to configure plan record?

Configure plan record and camera will start recording automatically during the time you set.

Do as the following steps:

1 verify the alarm time

First you should select one camera by double click the IP address not its camera name, then choose one day and set the record time. Finally click Save.

By this way, you can set plan record time for other days.

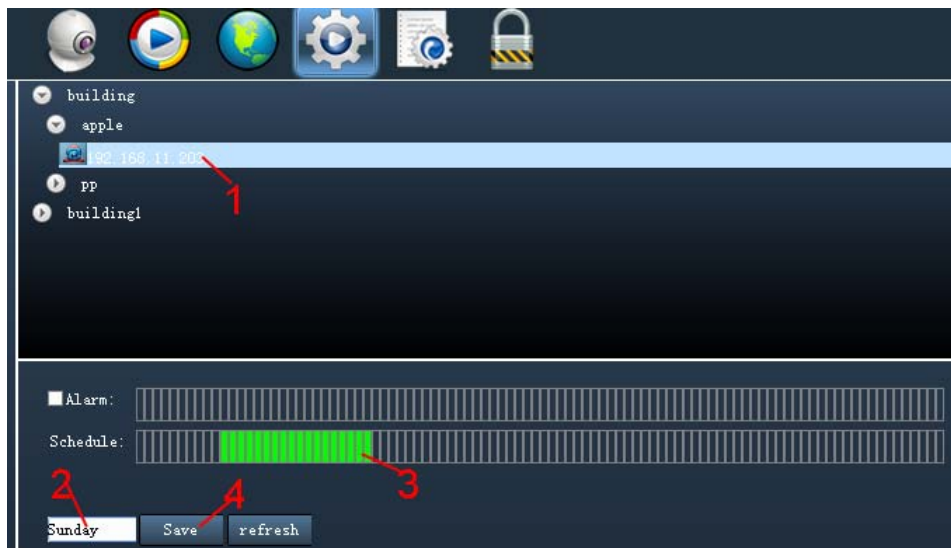


Figure3.31

Note: After all settings, you should re-start the client then the settings take effect.

2 The storage path

If you have set the storage path for the alarm record, here you need not reset again. Manual record file, pre-record file, alarm record file has the same storage path.

You need to reboot the client after finishing the plan record settings.

When the camera alarming or recording, you can see the icon prompt in the Live View UI.



Figure3.32

 : alarm icon  : plan record icon

3.5 Others

Log save time: There are three modes: 30 days, 60days and 90 days. For example: If you select 30 days, for PC time, the logs that 30 days ago will be saved to one disk and the logs of the client will be

cleared automatically.

Capture picture mode: There is only one mode: JPEG.

Automatically save log: Choose the storage path for logs. The default path is D disk.

Picture save path: Choose the storage path for the captured pictures. The default path is D disk.

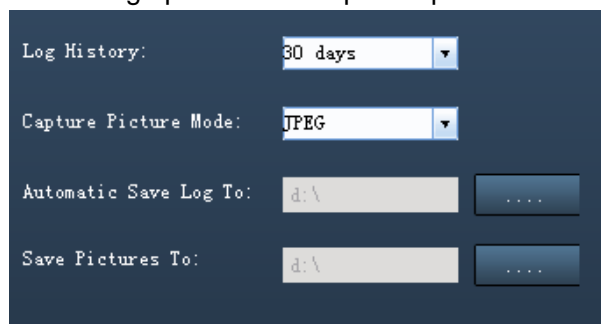


Figure3.33

3.6 Alter the login username and password of the client


Click this icon  then click Users, you can alter/add/delete the user name, password and permissions.



Figure3.34

Add: Enter one user name and password, select one permissions then click add, you will see a information cue, if success, you can see the new account in the left part.



Figure3.35

Delete: Select one account then click delete, you will see an information cue if success.

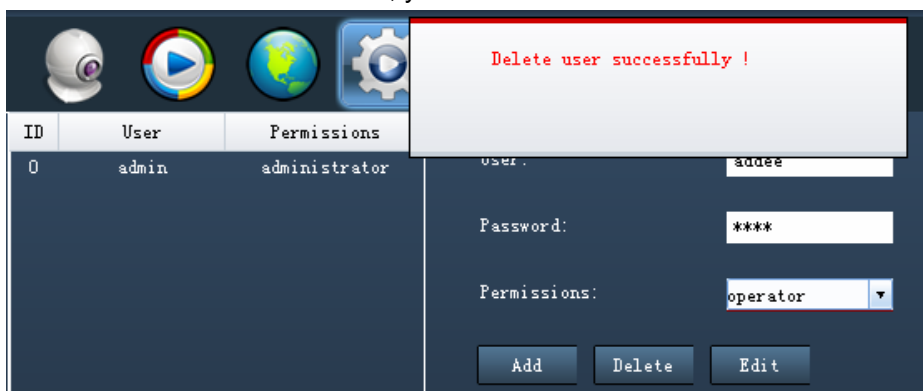


Figure3.36

Edit: Select one account and enter the new user or password or permission. Then click Edit.

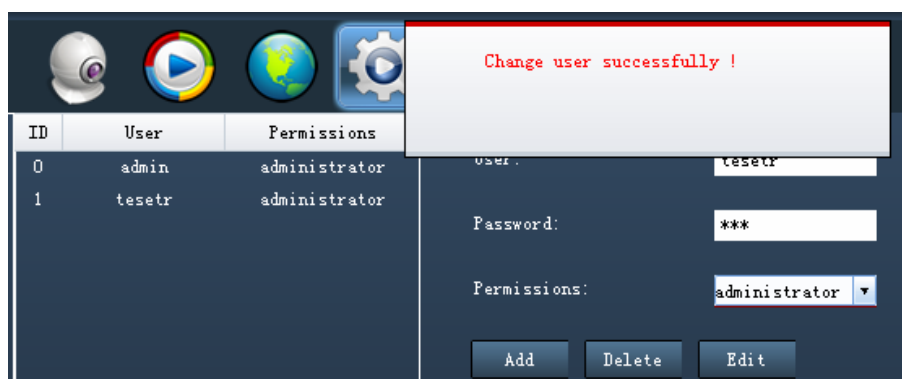



Figure3.37

Note: The default admin account cannot be deleted. Please reset password at first using and prevent unauthorized users login.

4 Play back record files

Login the client and click this icon , here you can search all record files and play them.

4.1 Search/play my record files

You can search all record files (alarm record file, plan record file, manual record file) by the following way:

- 1 Select the date: year and month.
- 2 Choose one day
- 3 Click Search button. If there are record files, you can see the camera name and MAC ID under Search button.
- 4 Choose the device and you can see all record files tag at the bottom of the UI.

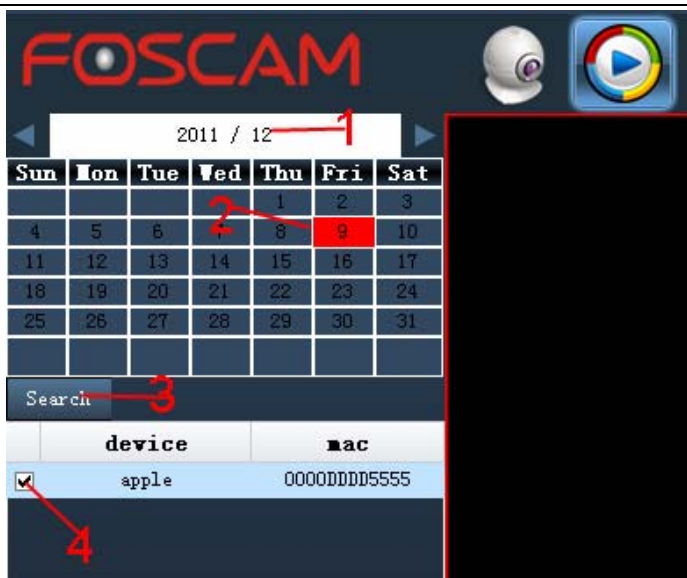


Figure4.1



■:Plan record file ■:manual record file ■:alarm record file

Figure4.2

4 Click the play button, the record file will play.

If there are many devices under the Search button, choose four devices first, then you can see the record files tag of each device at the bottom of the UI. Then click the play button for each camera, the four cameras' record file will play at the same time.











When some record files are playing but you want to see another device's record files, you have to close all videos of four windows, and select device again, then click play button.

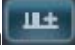
4.2 The Play back UI



Figure4.3

There is a button bar below the window.

-  : Play one record file
-  : Stop playing
-  : Snap pictures
-  : Full-screen. Press ESC and quit full-screen.
-  : Speed up
-  : Speed down
-  : Click it and the time bar will be amplified.
-  : Click it and the time bar will be lessened.
-  : The time bar roll to left.
-  : The time bar roll to right.

e.g :If you want to see the accurate time of record file, click the button .

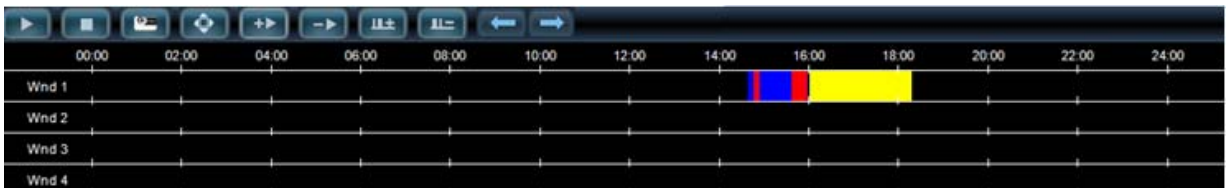


Figure4.4



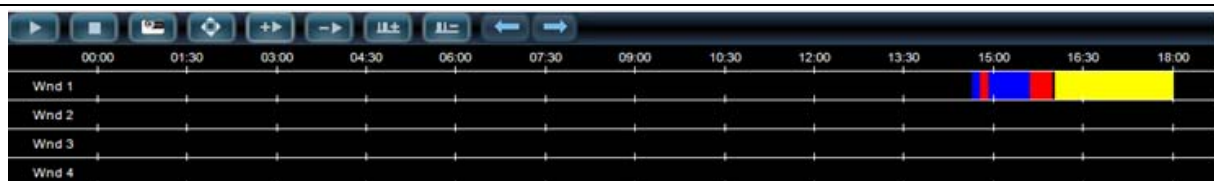


Figure4.5





Click the icon  again, the record file tag lost, figure 4.6 (the display time from 0 o'clock to 12 o'clock, but the record happened after 14 o'clock), click the icon , look at the picture figure 4.7.




Figure4.6



Figure4.7

: Click it and the time bar will be minimized. It has the opposite effect with .

5 Map

Click the icon  and back to the Map UI. When motion is detected, you will know which camera alarmed and where is the camera.

Import the map

1 Click the new button and you can see the following screen.

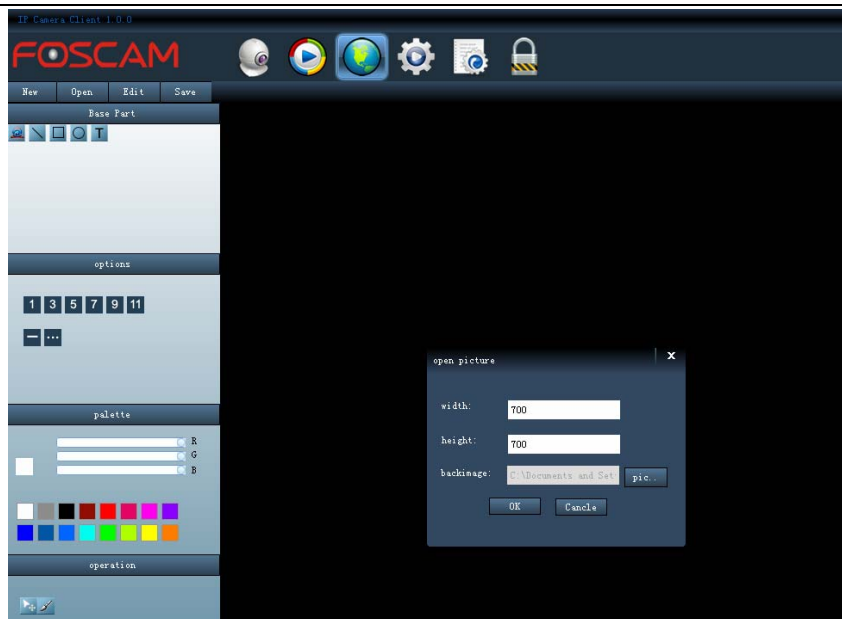


Figure5.1

Fill in the width and height of the map, the default width and height are all 700 pixel. Click the button **pic..** and import the background (the pic must be .bmp file). Then click OK. Look the following picture:

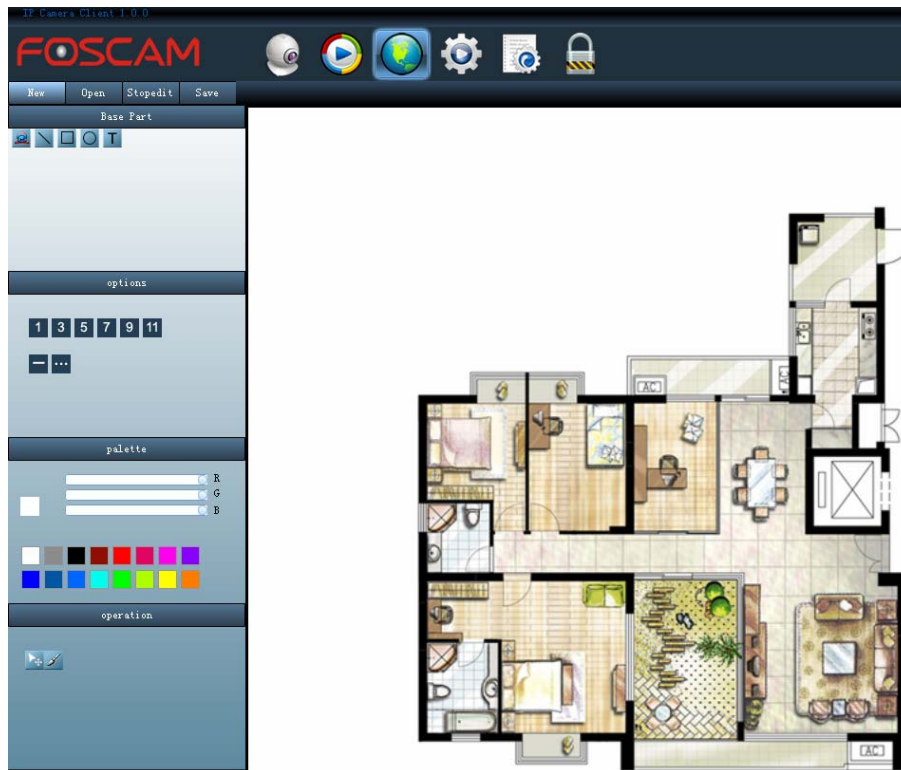



Figure5.2

Add cameras.

Click the camera button  under “Basic Part”, then click left mouse on the edited picture, you can see one camera icon.

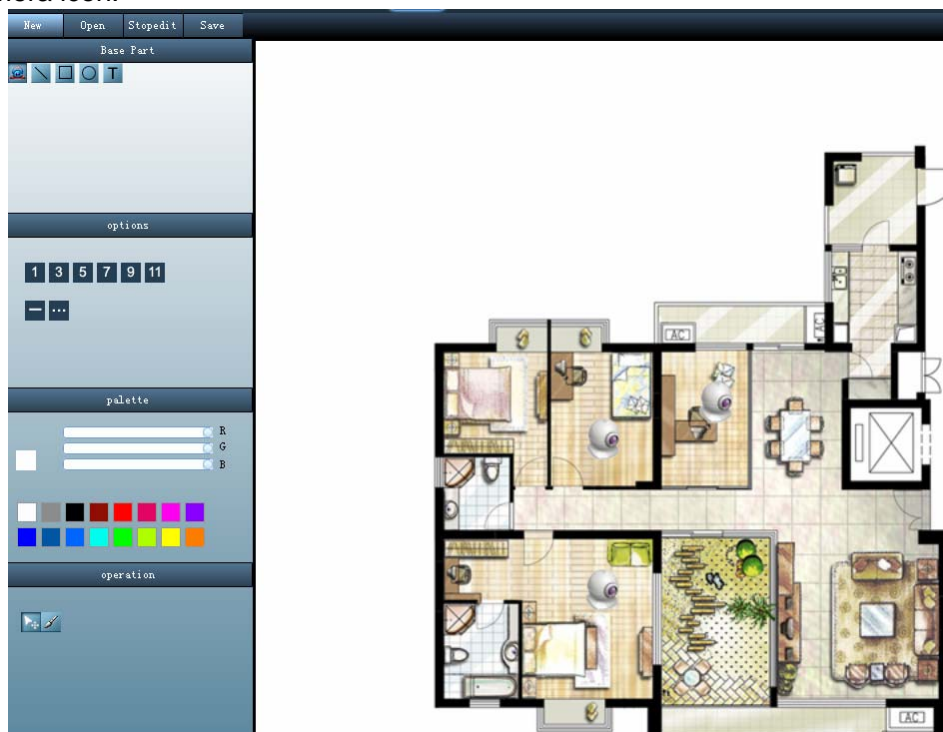


Figure5.3


If you want to change the camera position, click the change button  under “operation window”, then click left mouse on the camera, you can see the small blue box around the camera icon, then you can drag the camera tag to the suitable position.



Figure5.4

When you see the blue box around the camera, click right mouse, there are two option:set IP,cancel. Click Set ip, and choose one IP for the camera icon.Click Enter then click right mouse. You can set ip for all cameras by this way.

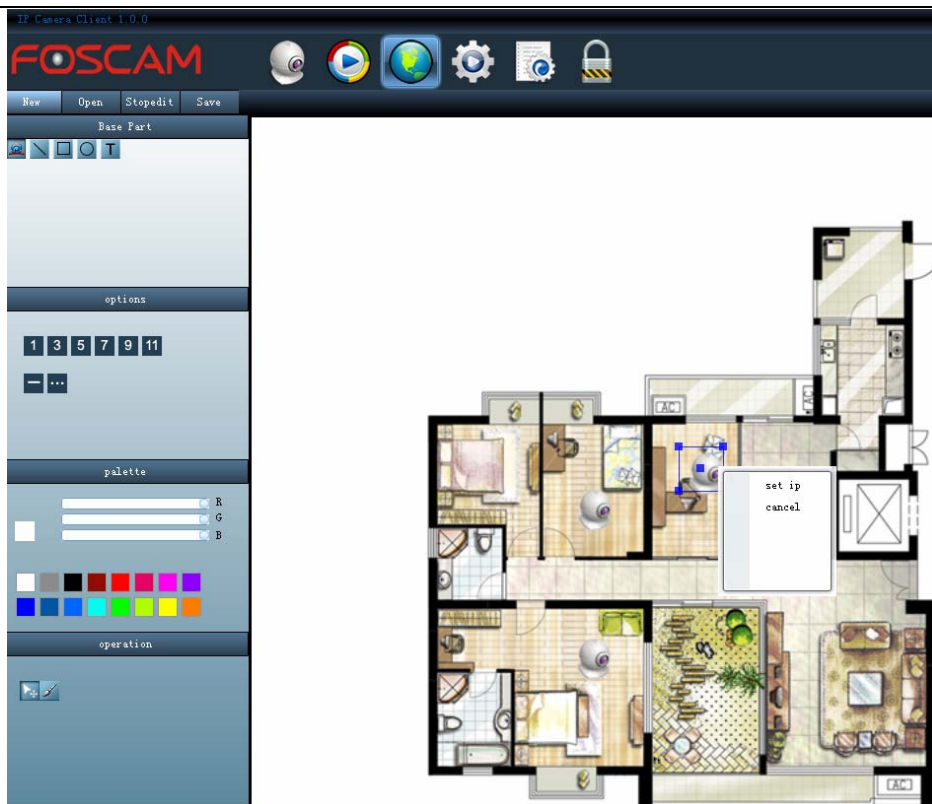


Figure5.5

Click the icon **T**, you can write something to mark the camera. But the written content cannot be changed again.

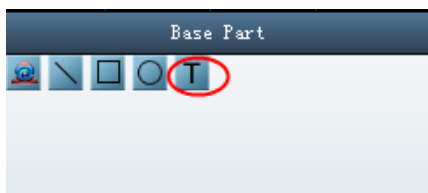


Figure5.6

Click Save after finishing edit. Next time you want to re-edit the map, you can open the file directly. If you configure the alarm correctly, when the motion is detected, the camera icon will flash and change to red color.

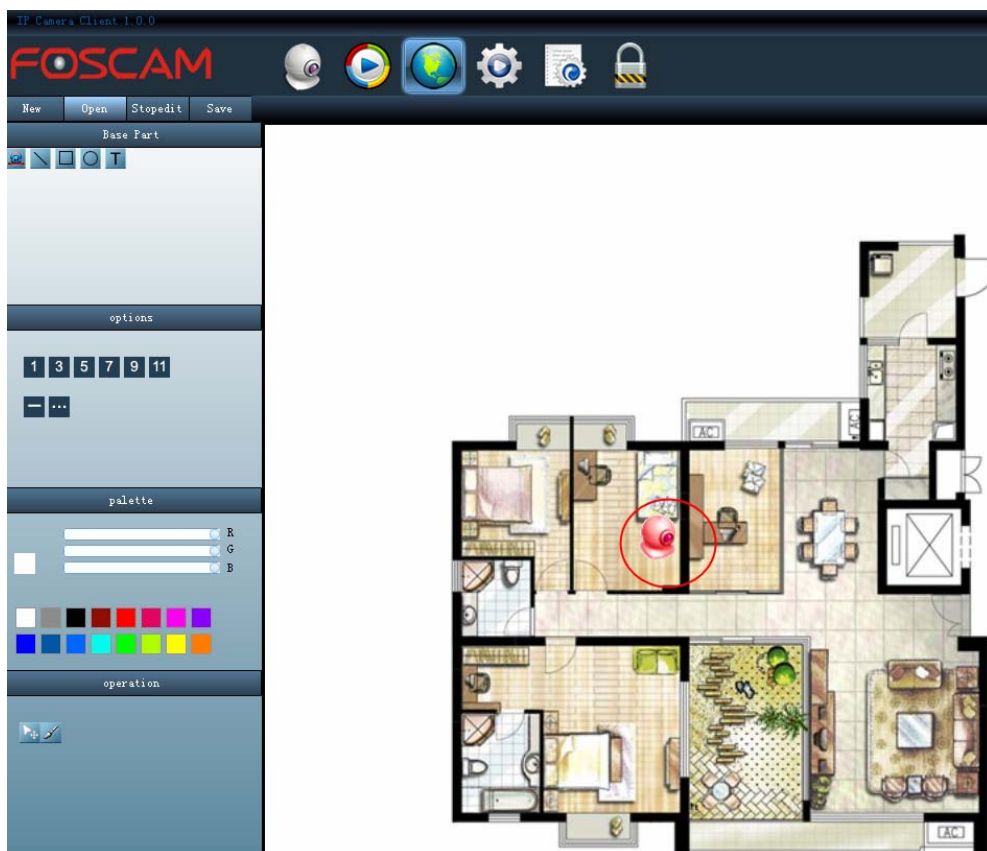


Figure5.7

Others

The map supports self-drawing map. There are other drawing tools on the left panel.

line type: There are three types: straight line, rectangle and ellipse.

line width. There are six types. The bigger the number, the wider the line.

Line color: Select one color for the line.



Figure5.8


Then you can drag on the background. If you want to change another line type, such as ellipse, you need to click the right mouse first then choose a new line type.

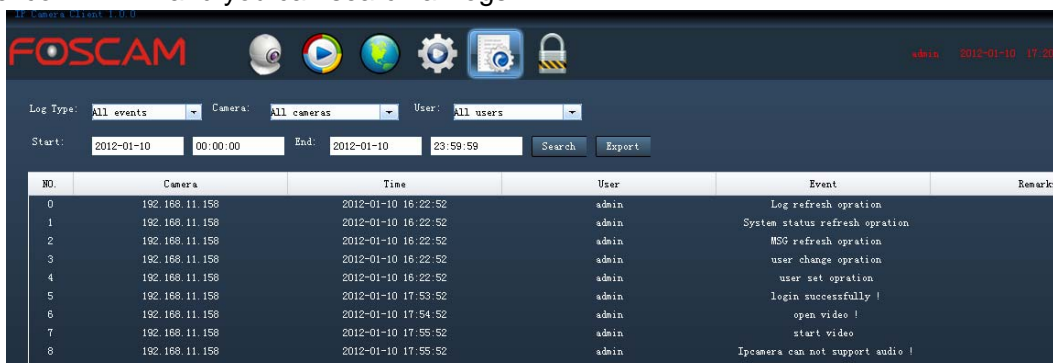
If you want to delete one edited line, click Delete key on your keyboard.

Note: **Edit**: When the map in this state, you cannot edit the map. Click the icon again, and the icon

change to **Stopedit**, you can edit the map.

6 How to use the Log

Click the icon  and you can search all logs.




NO.	Camera	Time	User	Event	Remarks
0	192.168.11.158	2012-01-10 16:22:52	admin	Log refresh operation	
1	192.168.11.158	2012-01-10 16:22:52	admin	System status refresh operation	
2	192.168.11.158	2012-01-10 16:22:52	admin	MSG refresh operation	
3	192.168.11.158	2012-01-10 16:22:52	admin	user change operation	
4	192.168.11.158	2012-01-10 16:22:52	admin	user set operation	
5	192.168.11.158	2012-01-10 17:53:52	admin	login successfully !	
6	192.168.11.158	2012-01-10 17:54:52	admin	open video !	
7	192.168.11.158	2012-01-10 17:55:52	admin	start video	
8	192.168.11.158	2012-01-10 17:55:52	admin	Ipcamers can not support audio !	

First choose the log type, the camera IP, User, Start and End time, then click search, you can see all logs that satisfied conditions. If you want to store the search result, click Export button and all logs will be exported to a file.

7 Log out the current user

If you are leaving your PC, you had better log out the current account to prevent illegal user using.

Click the icon  and it will pop up a dialog box. Just click OK and logout the current user.

