

# NAS100

## USB & LAN Combo Drive

### User's Manual



**=== IMPORTANT NOTE ===**

**Please visit the following website for software update  
and last-minute changes to this document**

<http://www.drivers-download.com/nas100/>  
Download code (DL Code): 0070607

## **INTRODUCTION**

NAS100 is a NAS (Network-attached Storage) for home user and SOHO user. It has USB & LAN combo interface, which provide greatest flexibility for SOHO and frequently traveler. NAS100 functions as a **file / FTP server** and provides an easy way for LAN users to backup data or share files through intranet/internet.

## **PACKAGE CONTENTS**

Please check whether the package contains the following items. If any item is missing or damaged, contact the retailer as soon as possible.

- I NAS100
- I Power adapter
- I RJ45 network cable
- I USB A to B male cable
- I Manual
- I Securing screws

## **MINIMUM SYSTEM REQUIREMENTS**

- I Apple Safari; Linux Mozilla; Internet Explorer 5.x; Netscape 6.2.x & up
- I Windows XP/2000/Me/98se, Mac OS 10.3.x or above, Linux
- I 3.5" IDE UMDA Hard drive formatted to FAT32 format

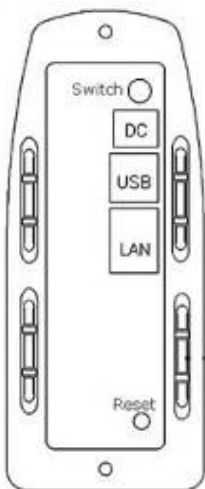
## **FEATURES**

- I Simplified file sharing among your home or SOHO network.
- I LAN & USB combo interface - Greatest flexibility for SOHO and frequent traveler
- I One 10/100Mbps Ethernet port supporting Auto MDI/MDIX
- I Powered by high performance, low power consumption RISC processor
- I Supports all standard 3.5" IDE HD up to 500GB
- I Compatible with Windows 95 /98 /98SE /ME /XP /2000 /NT4.0/Linux/ MAC OS/X
- I Web-based user interface for easy configuration
- I Firmware can be upgraded through web admin interface
- I Automatic hard drive spin-down – Power saving and reduce noise
- I Big cooling fan and aluminum case – Excellent heat dissipation to prevent from hard drive overheat

## SPECIFICATION

LAN Interface	<ul style="list-style-type: none"> <li>  Standard: IEEE802.3 10BASE-T / IEEE802.3U 100BASE-TX (10 / 100Mbps)</li> <li>  Connector: RJ-45 x 1</li> </ul>
USB Device Interface	<ul style="list-style-type: none"> <li>  USB 2.0 High-Speed mass storage device port x 1 (USB-B connector)</li> <li>  Automatically disable LAN interface when USB device port is connected to host PC.</li> </ul>
IDE Interface	<ul style="list-style-type: none"> <li>  Supports 3.5" ATA100/ATA133 IDE hard drive. Capacity up to 500GB</li> </ul>
LED indicator	<ul style="list-style-type: none"> <li>  Power</li> <li>  LAN Link activity</li> <li>  Hard drive busy</li> </ul>
Function key	<ul style="list-style-type: none"> <li>  <b>One-button backup key for USB interface, supported by the bundled backup software for Windows</b></li> <li>  <b>Reset button: Restore system to factory settings</b></li> <li>  <b>Power On/Off push button</b></li> </ul>
Software functions	<ul style="list-style-type: none"> <li>  Automatic (DHCP client) or fixed IP assignment</li> <li>  DHCP server</li> <li>  Network file protocols: FTP, Samba server (CIFS/SMB protocols)</li> <li>  User account and share folder security</li> </ul>
System management	<ul style="list-style-type: none"> <li>  Web-based administration.</li> <li>  Language support: English</li> <li>  Hard disk utility: Format, Scan disk</li> <li>  Hard disk file system: FAT32</li> <li>  Supports Unicode filename</li> <li>  Power saving setting: Automatic hard drive spin-down when idle time-out (0~60 minutes)</li> <li>  Firmware upgrade via HTTP (web-based administration)</li> <li>  Supports NTP (Network Time Protocol) time server</li> </ul>
Network client type	<ul style="list-style-type: none"> <li>  Windows 98se/Me/NT4.0/2000/XP</li> <li>  Macintosh</li> <li>  Linux/Unix</li> </ul>
Power supply	12VDC
Physical dimension	210MMx120MMx50MM

## Back Panel



Power switch: Press power switch to turn on/off NAS100

DC Connector: Plug DC jack to supply power.

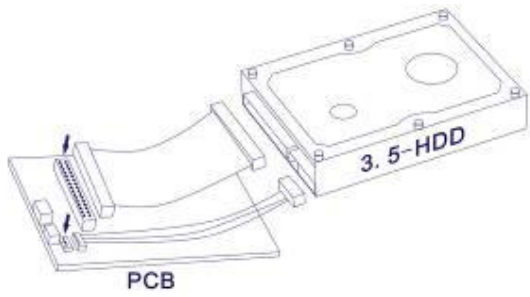
USB Connector: Connect to PC to transfer files via USB 2.0

LAN Connector: Attach to network to share files

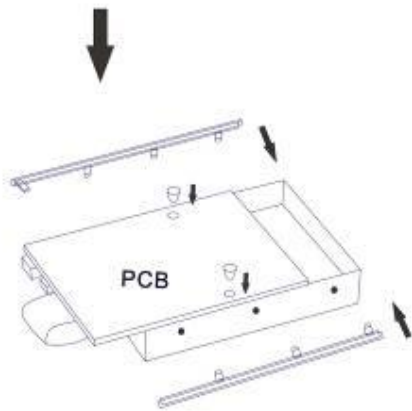
Reset button: To restore factory default setting, press and hold this button then turn on NAS100, release the button 6 seconds later.

# INSTALLATION GUIDE

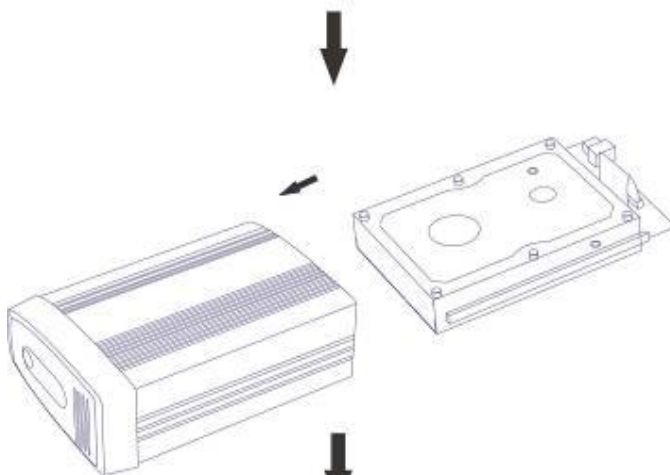
## HARDWARE INSTALLATION



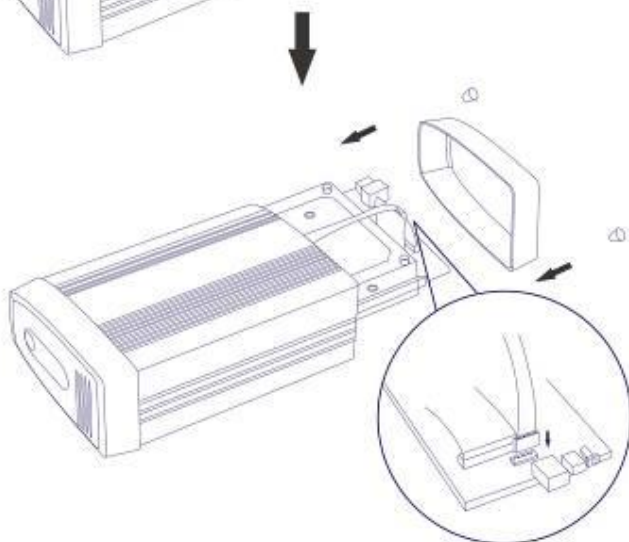
A: Plug IDE cable and HDD power cable



B: Install hard disk screw and plastic side bar



C: Slide PCB and hard disk into aluminum case.



D: Plug LED cable and enclose the back cover. Then install securing screw

## Connecting NAS100 to USB Host (PC)

NAS100 is a multifunctional hard drive enclosure. In addition to being a network storage device, you can also use it as a standalone external hard drive via the USB interface.

### Max OS X

Driver installation is not required for systems using Mac OS 10.1.2 or above. Simply connect NAS100 using the included USB cable and access the data by clicking the “Untitled” HDD icon located on your Desktop.

### Windows XP & Windows ME

Driver installation is not required for Windows XP and Windows Me. Simply connect the NAS100 using the included USB cable and access the data via “My Computer”.

### Windows 98 (Download Drivers)

To utilize the USB connectivity, please visit the following URL for to download the driver:  
<http://www.drivers-download.com/nas100/>

Please ensure that you install the device driver before connecting the USB port. When you complete the driver installation, reboot your computer, connect NAS100 to your computer and access the data via “My Computer”

## Connecting NAS100 to Network

Connect the network cable to the LAN port on the back of NAS100 and the other end of the network cable to a port on your hub, switch or router.

The Ethernet port on NAS100 is Auto-MDI/MDIX, which means you can connect it using either a crossover or a direct network cable.

## Configuring NAS100

NAS100 features a web-based control interface to manage your settings. If you are using an operating system other than Windows, please refer to next section labeled “Other Operating Systems”.

Open your web browser and enter `http://Storage` or `http://Storage-XXXX` in the URL address field. You enter the IP address of NAS100.



can also



Enter the default login information:

Username: admin

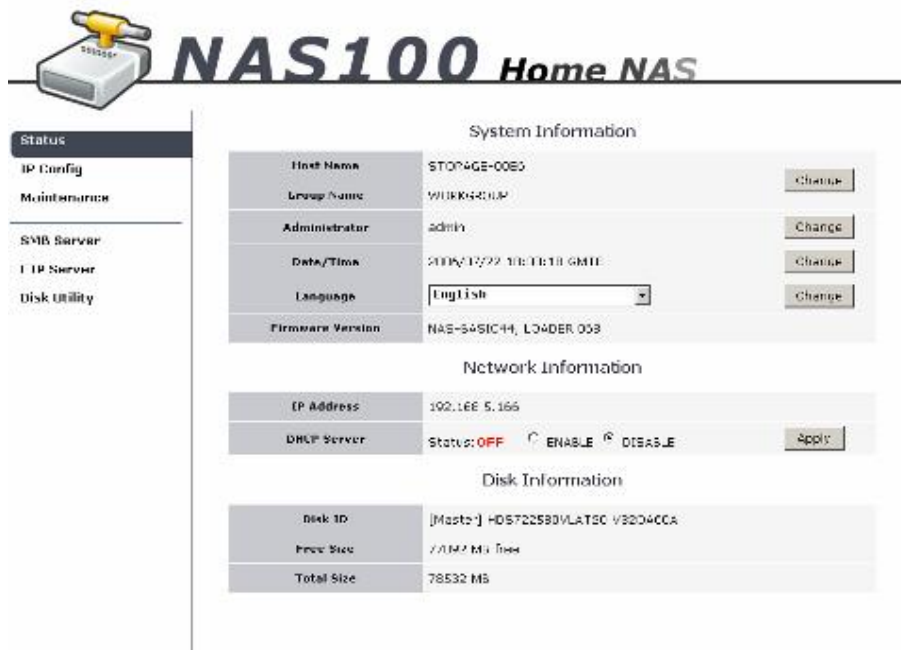
Password: admin

For security purposes, your login information can be changed via the web control interface.

When two new NAS100s are simultaneously connected to your network, you need to distinguish between the two by typing “http:// Storage-XXXX” with their unique MAC address. Please refer to the sticker on the rear panel for the address and replace XXXX with the last four digits of the MAC address. For example if your NAS100’s MAC Address is 00-14-3F-AA-01-68, you will need to enter “http://Storage-0168” in the URL address bar.

When you are planning to perform administrative tasks from a different operating system, you will need to input IP address of NAS100 in the browser URL address bar. If you do not know the IP address of NAS100, you will have to do this additional procedure. You will need to connect NAS100 directly to your computer, input the default IP address 169.254.0.1 in the browser URL address bar to access the web control panel.

Upon a successful login, you will see the following screen.



**System Information**

Host Name	STORAGE-00E0	Change
Group Name	WORKGROUP	Change
Administrator	admin	Change
Date/Time	2009/12/22 10:18:18 GMT	Change
Language	English	Change
Firmware Version	NAS-S4SIC14_Loader_053	

**Network Information**

IP Address	192.168.5.166	
DHCP Server	Status: OFF <input type="radio"/> ENABLE <input checked="" type="radio"/> DISABLE	Apply

**Disk Information**

Disk ID	[Master] HD572258DVLAT5C V82D4CCA
Free Space	7.01 MB free
Total Size	78532 MB

An overview description of the functions on the left menu bar:

- Status** Shows the data related to your NAS100 such as networking status and hard drive information. You may also edit administration and file language settings here.
- IP Config** Allows you to manually configure the IP address of NAS100
- Maintenance** Perform firmware upgrade, reboot or reset NAS100
- SMB Server** Configure the Samba feature of NAS100 for the home/office network file sharing capabilities. You can also create/remove folders and their share permissions.
- FTP Server** Configure the FTP features of NAS100. You may add/remove users and their permissions.
- Disk Utility** Perform hard drive maintenance routines such as Scandisk and Format.

## Status – System Information

The welcome screen displays the IP address, firmware version and the drive information such as the hard drive type and storage space available.

The administrator may change the control panel login information in here.

You may also change the default hostname of your NAS100 here. Keep mind that after you change the hostname, you will need to use it to access your NAS100. For example, if changed your hostname to “FileServer”, please type “http://FileServer” to access the Web Control Panel after you submitted your changes.

The Language setting is used to recognize files with characters other than English. If you have trouble reading your files on NAS100, please select the appropriate language.

The screenshot shows three sections of the NAS100 control panel:

- System Information:** Host Name: STORAGE-0055 (Change); Group Name: WORKGROUP (Change); Administrator: admin (Change); Date/Time: 2009/07/22 18:03:18 GMT6 (Change); Language: English (Change); Firmware Version: NAS-S4SIC44\_LOADER\_053.
- Network Information:** IP Address: 192.168.5.100; DHCP Server: Status: OFF (ENABLE / DISABLE) (Apply).
- Disk Information:** Disk ID: [Master] HD57225839VLA12U\_VGB046U5; Free Size: 77892 MB free; Total Size: 78532 MB.

hard  
drive

web

in

you

When you reset NAS100, either by the hardware switch or through the web control the settings will return to the default setting including the hostname. The default hostname remain as Storage-XXXX (where XXXX is the last four digits of the MAC address).

## IP Configuration

The administrator may use this option to manually define the IP address of the NAS100. If the hub/router/switch in your network has a DHCP server, then NAS100 will automatically be assigned an IP address.

The screenshot shows the IP Config section with the following settings:

- Automatic IP: (unchecked)
- Static IP as below: (checked)
- IP: 192.168.5.100
- SubnetMask: 255.255.255.192
- Gateway: 192.168.5.193
- Primary DNS: 213.96.124.133
- Secondary DNS: 213.96.134.133
- Apply: (button)

NAS100 can also act as a DHCP server when one is not present in your network. The default IP of NAS100 in DHCP server mode is “169.254.0.1” and any device that is linked to the network containing will be assigned an IP of “169.254.0.x” automatically.

## Maintenance

The administrator can perform maintenance tasks on NAS100 here.

Update the firmware only if you are experiencing problems with your NAS100. New firmware files are available to download from our website:

<http://www.drivers-download.com/nas100/>



NAS100 can also act as a DHCP server when one is not present in your network. The default IP of NAS100 in DHCP server mode is "169.254.0.1" and any device that is linked to the network containing will be assigned an IP of "169.254.0.x" automatically.

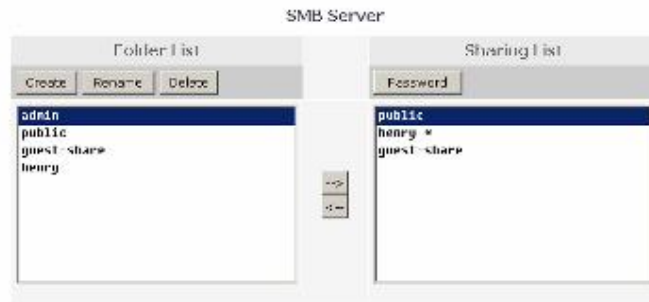
## Samba Server

Samba enables the core function of NAS100 which is network file sharing.

This option allows the administrator to determine the folders/directories to be shared.

In here, you can create, rename and delete folders/directories in your NAS100. All the folders/directories in the root directory that were previously in your hard drive before it was installed in NAS100 will also be shown in the "Folder List".

The arrow keys in the middle are used to determine if the selected folder/directory is to be shared. Password protection for each shared folder can also be implemented.



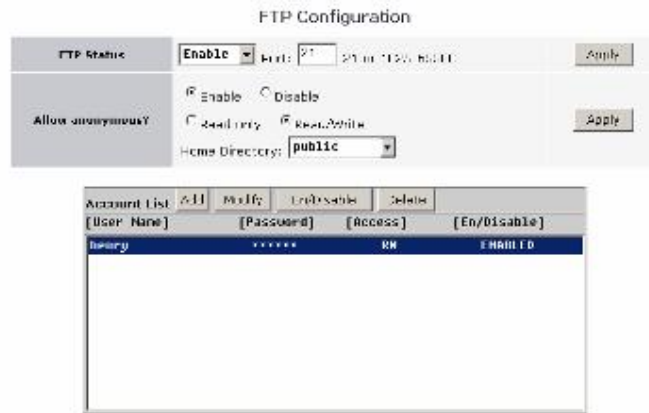
When creating folders/directories through the web control panel, please use only English alphabets.



## FTP Configuration

Abbreviated from File Transfer Protocol, FTP enables file exchange between computers on the Internet. NAS100 can work as a stand-alone FTP server when it is assigned a static IP.

Anonymous FTP is disabled by default. The administrator can determine if the users have read or write permission and the “Home Directory” will be the folder/directory the anonymous user can access upon logging in. The Account List displays the current FTP user accounts, the administrator can add new users, modify their permissions, temporary disable users and delete users.

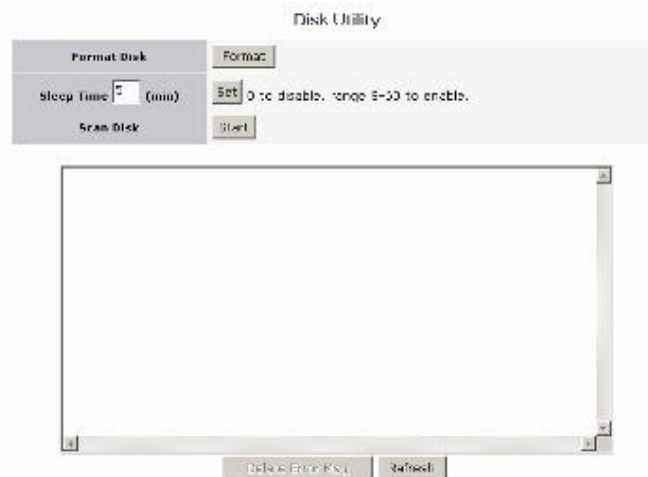


## Disk Utility

If you have installed a new hard drive in NAS100 that is not formatted, this will be the place to format it to the FAT32 format.

Since NAS100 supports power management, you can also determine the time the hard drive have to be inactive in order for NAS100 to enter sleep mode.

The Scan Disk function can be used to detect potential problems with the hard drive. Click on the refresh button to display the scandisk result.

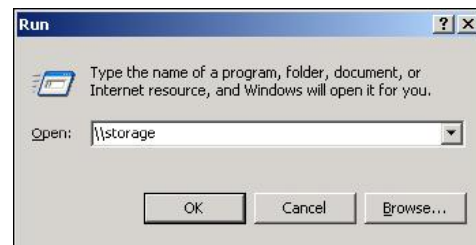


## Access Files from NAS100 – Windows

In Windows, the data can be accessed by searching for NAS100 in the “Network Neighborhood” (as a computer with the name “Storage”). Or you can access the data in the NAS100 with the following instructions.

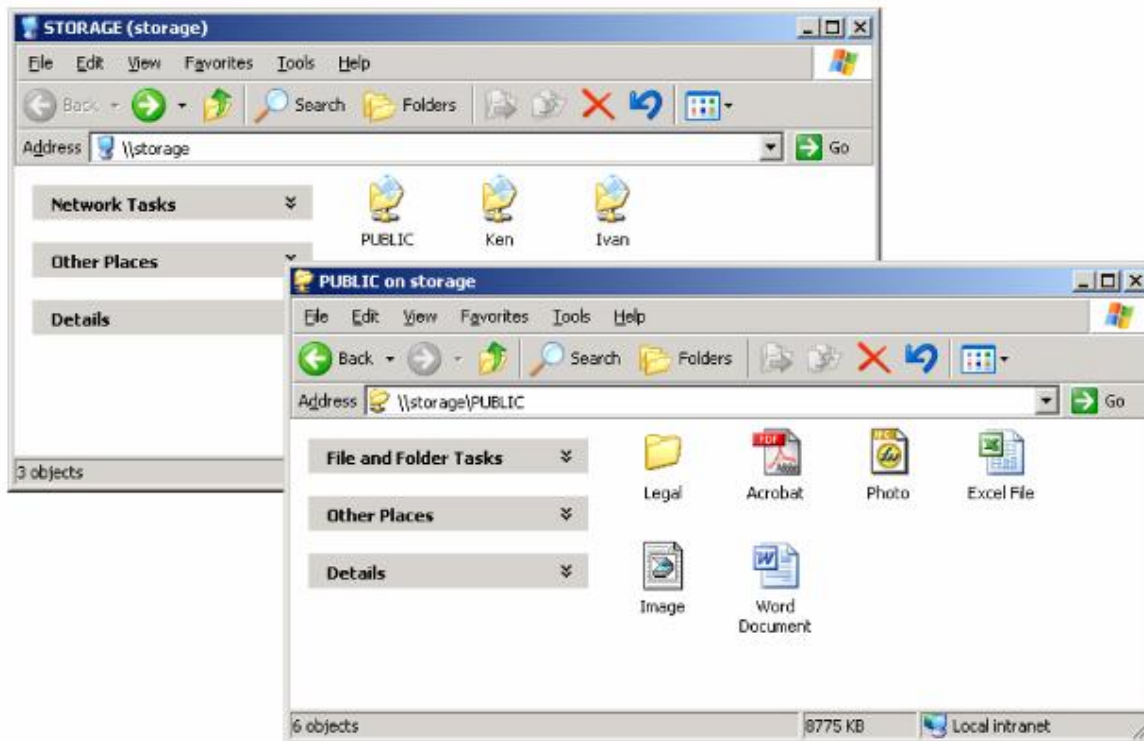
*The follow screenshots are taken from a PC running Windows XP SP2 and may vary slightly from your computer screen.*

Click on the Windows Start button, select “Run” from the menu and a dialogue box as shown will appear. Type “//storage” in the field and click “OK



If you change NAS100 hostname, you will need to replace the word “storage” with it. For example, if you changed your hostname to “FileServer”, please type “\\FileServer” instead.

The Windows Explorer will appear and you should be able to see all the folders that were previously selected to be shared under “SMB Server” in the control panel. Clicking on the corresponding folder will reveal the files in that folder.



## Access Files from NAS100 – Mac OS

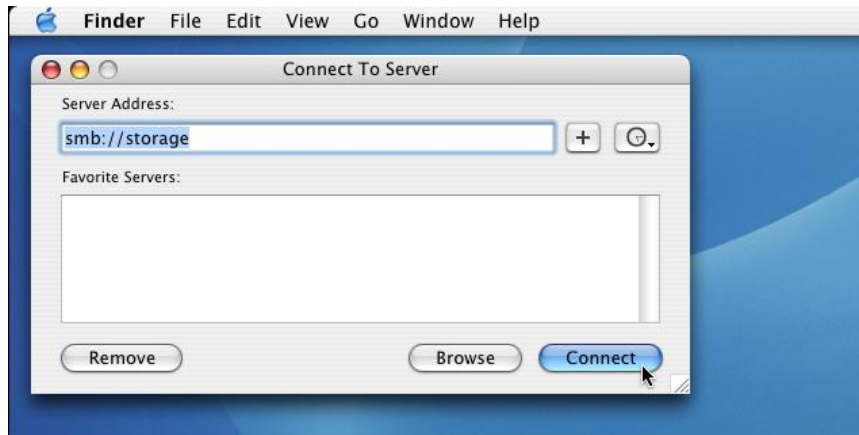
If the client computer is an Apple Macintosh running Mac OS, they will have to follow the procedure below to mount each shared folder as an SMB share to access the data.

*The follow screenshots are taken from a iMac running OS 10.3.x and may vary slightly from your computer screen.*

Under Finder, select  
Go >> Connect to  
Server or use the hotkey  
<Command +K>



The dialogue box  
“Connect to  
Server” will appear.  
Type  
“smb://storage”  
and click the  
Connect button.



If you change NAS100 hostname, you will need to replace the word “storage” with it. For example, if you changed your hostname to “FileServer”, please type “smb://FileServer” instead.

The next dialogue  
screen will  
prompt you for  
the folder that  
you will like to  
access. Select it  
and click the OK  
button.



You might be prompted to enter a password, unless a password was previously assigned in the control panel, you can leave it blank. After a successful mount, a network folder icon will be created based on the folder you selected as shown.



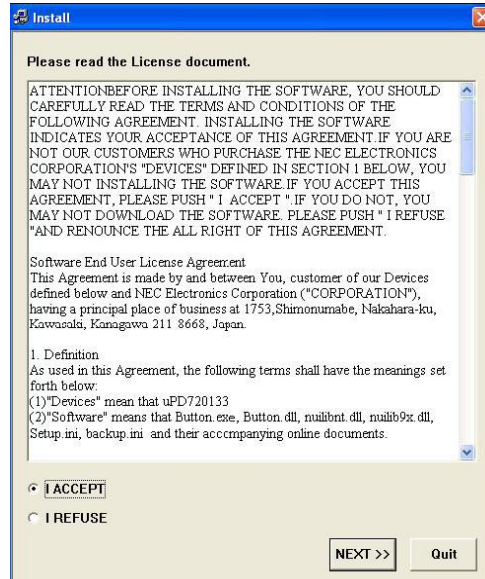
# One Button Backup Utility

## Introduction

This application software allows the user to backup or restore data to and from the enclosure by simply pushing a button.

## Install Application

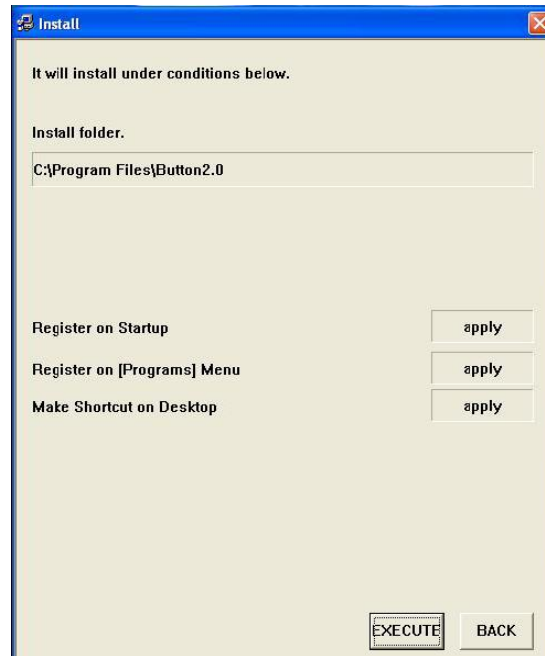
1. Simply run **INSTALL.EXE** in **OneButtonBackup\** folder of the Driver CD.
2. Select **"I ACCEPT"** and click the **NEXT >>** button to continue with installation.



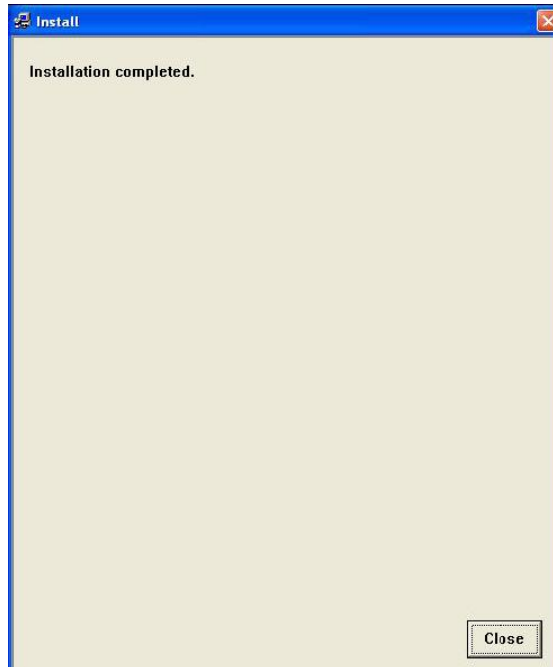
3. Tick the checkboxes if you would like to launch this application at the same time when OS starts. In the next OS boot-up, this application will start automatically. Click **NEXT >>** button to continue.



4. Click the **EXECUTE** button to continue.

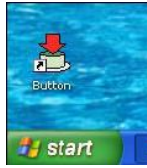


5. Click **Close** to complete installing the Button application software.



## Launch Application

1. At Windows Desktop, you will find the **Button** icon. Double click the **Button** icon to launch the Button application.



2. You will notice the Button application is now resided at the notification area of the Windows Taskbar.



3. Right-click on the **Button** icon at the Windows Taskbar. The menu for the Button application will be displayed.

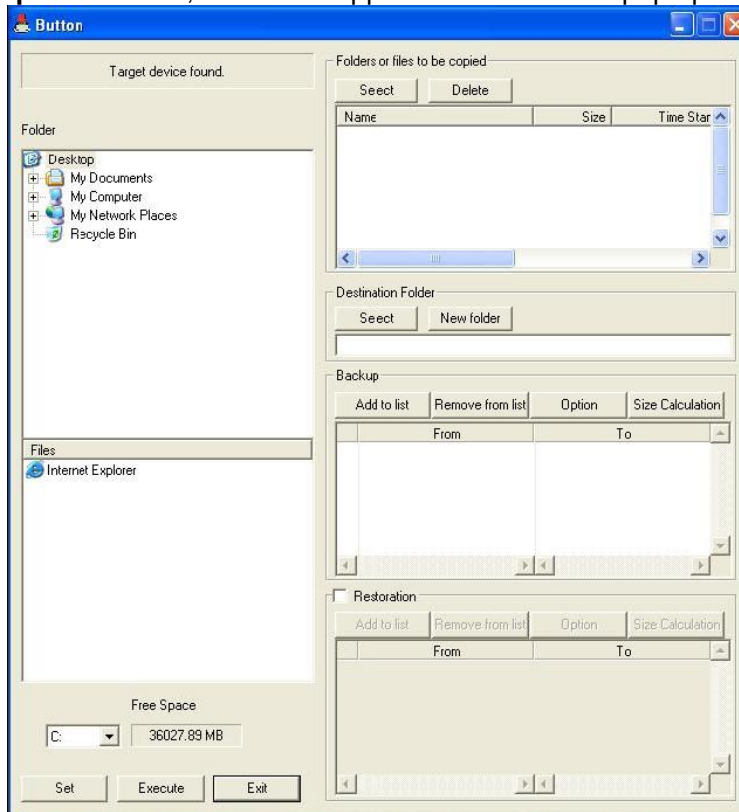
[Backup] : Launch Button application

[Cancel] : Close Menu

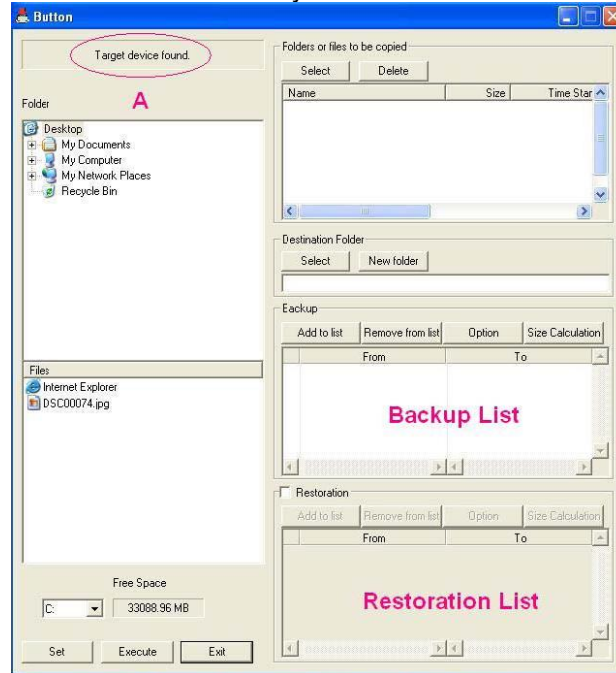
[End] : Close application



4. Select **Backup** at the menu, the Button application window will pop up as shown below.

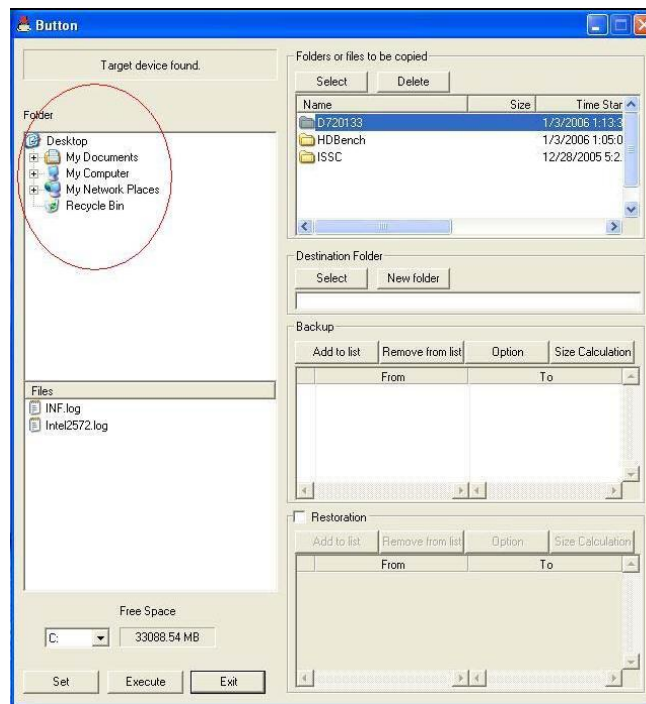


5. If the enclosure is already connected to the computer and the driver has been installed correctly, the Button application will automatically detect the enclosure as shown below.



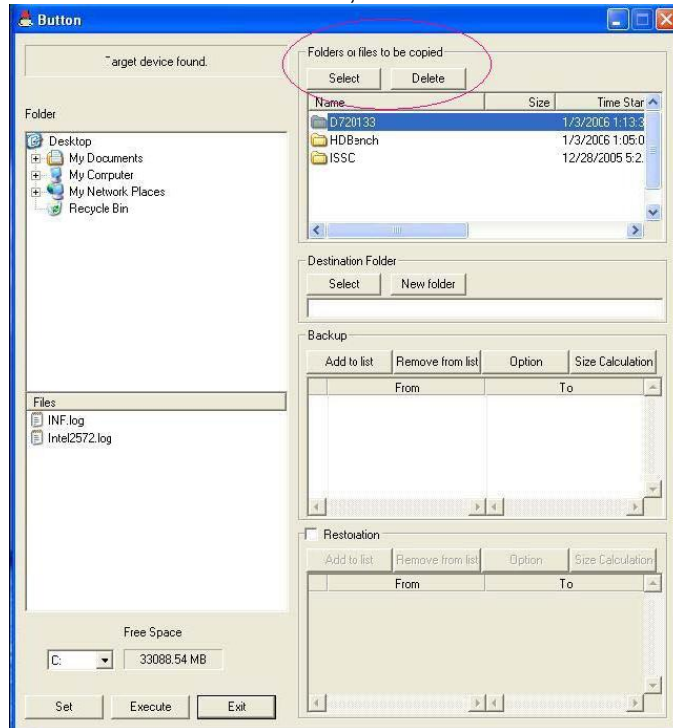
### Backup Function

1. At **Folder** window, highlight the folder you want to backup.

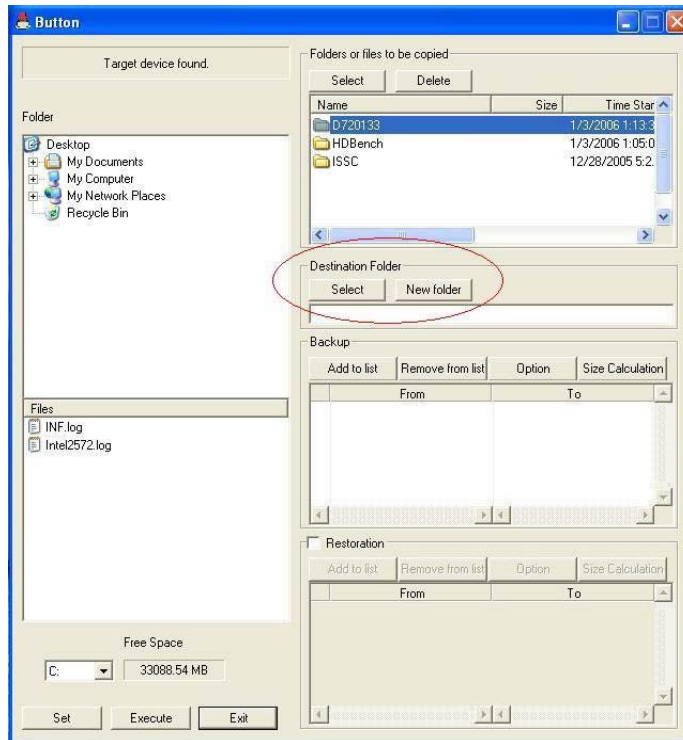




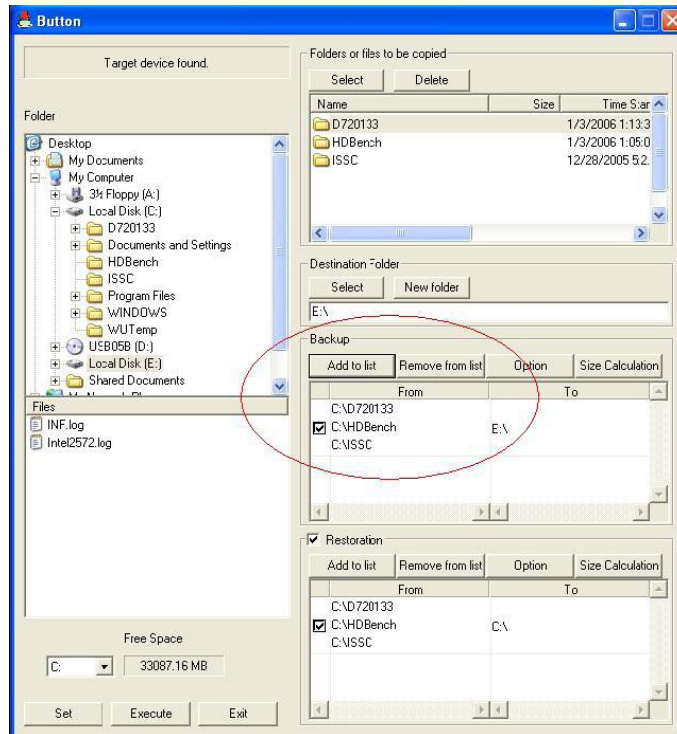
2. At **Folders or files to be copied** window, click **Select** button to select the folder or file. To remove the selected folder or file, click the **Delete** button.



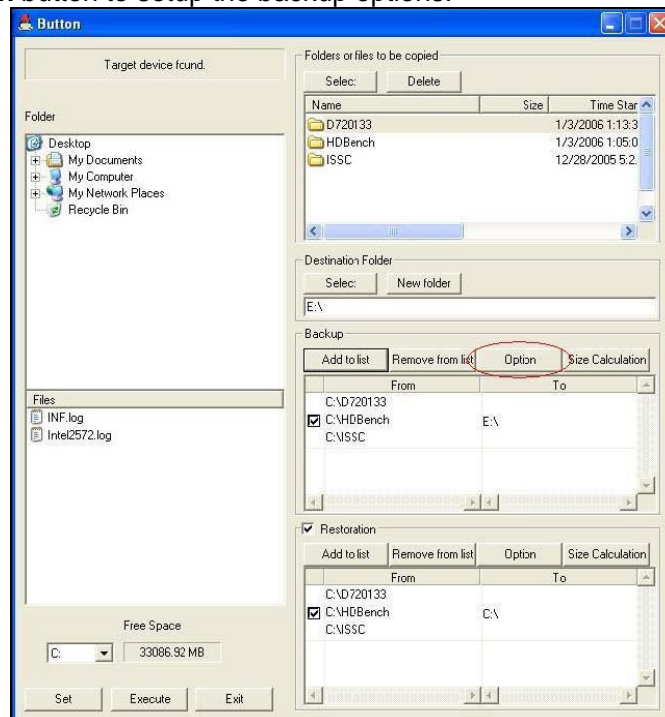
3. At **Destination Folder** window, select the destination folder or click **New Folder** button to create a new folder.



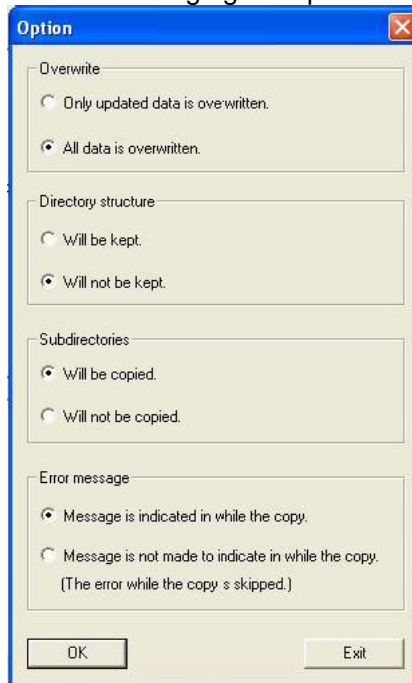
- At **Backup** window, click **Add to list** button to add the folders or files to the backup list. You can remove the list by clicking on the **Remove from list** button.
- If there is more than one backup list, you can select which list to backup by ticking the checkbox next it.



- Click the **Option** button to setup the backup options.

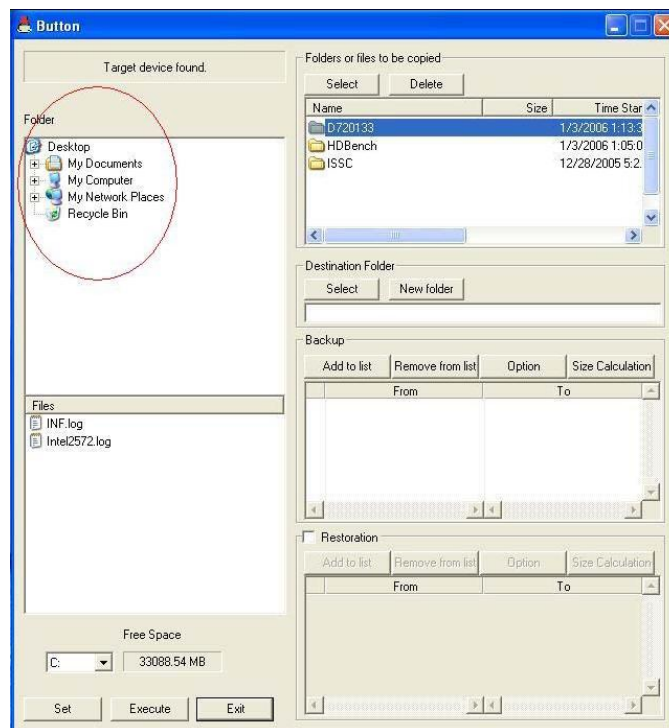


7. Select **OK** button once you have finished changing the option settings.

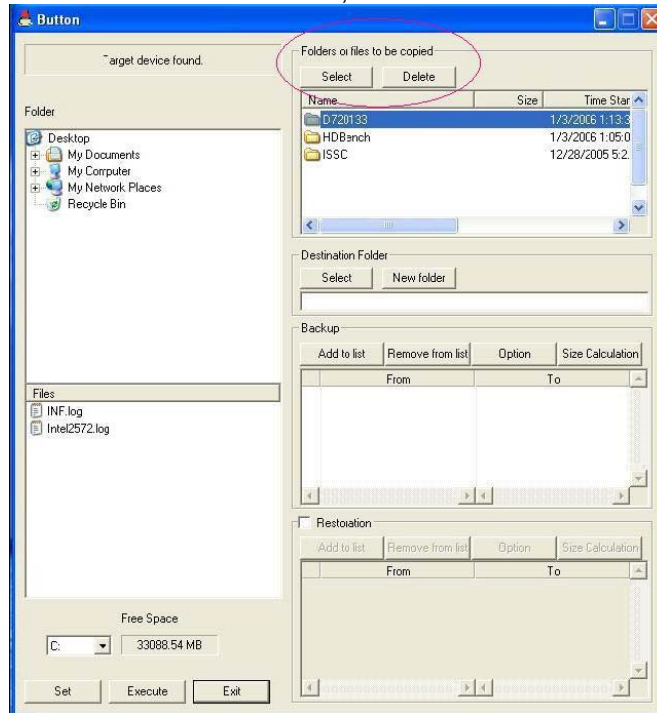


### Restoration Function

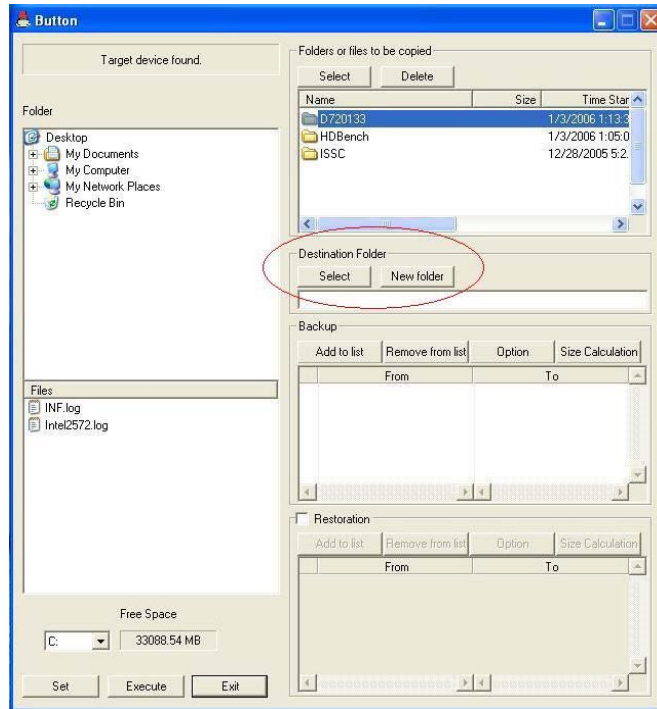
1. At **Folder** window, highlight the folder you want to restore.



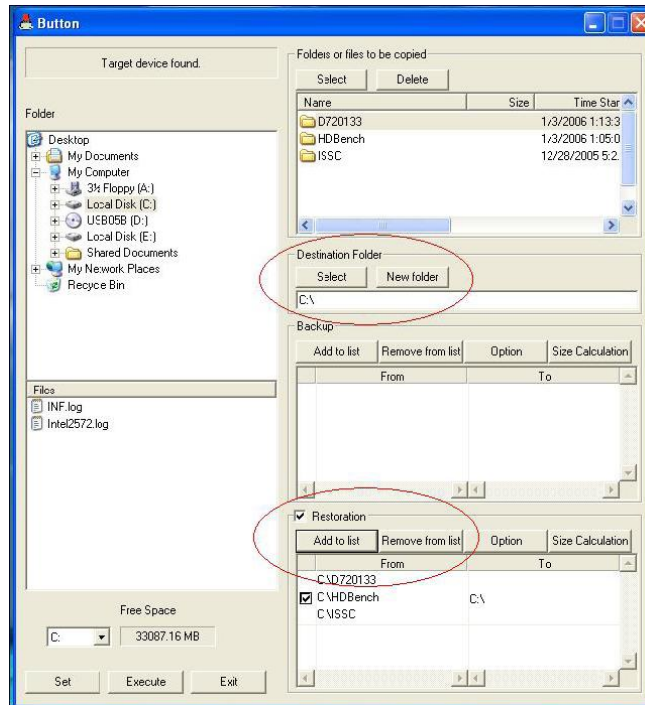
2. At **Folders or files to be copied** window, click **Select** button to select the folder or file. To remove the selected folder or file, click the **Delete** button.



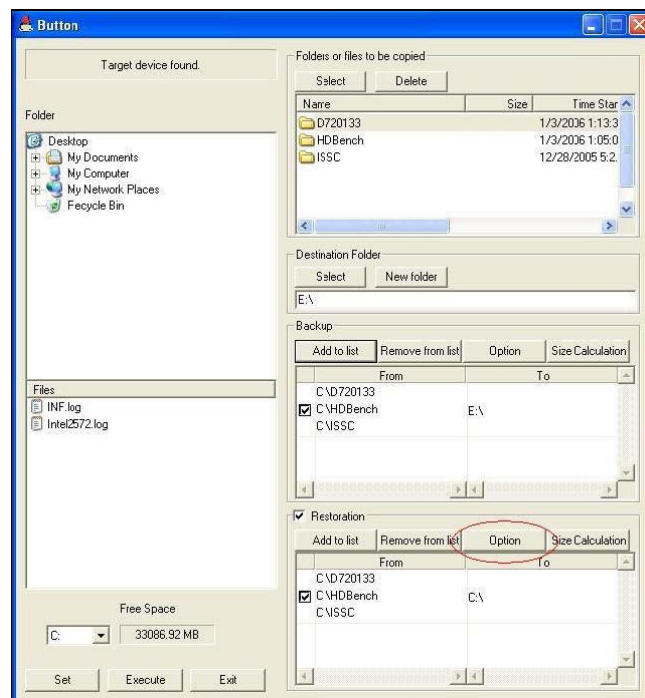
3. At **Destination Folder** window, select the destination folder or click **New Folder** button to create a new folder.



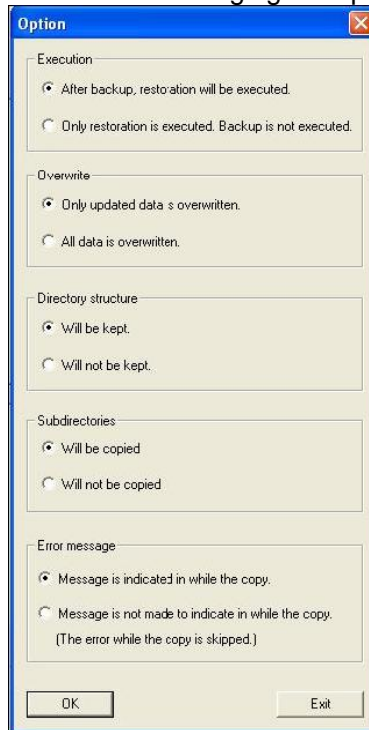
4. At **Restoration** window, tick the **Restoration** checkbox. Click **Add to list** button to add the folders or files to the restore list. You can remove the list by clicking on the **Remove from list** button.
5. If there is more than one restore list, you can select which list to restore by ticking the checkbox next it.



6. Click the **Option** button to setup the restore options.

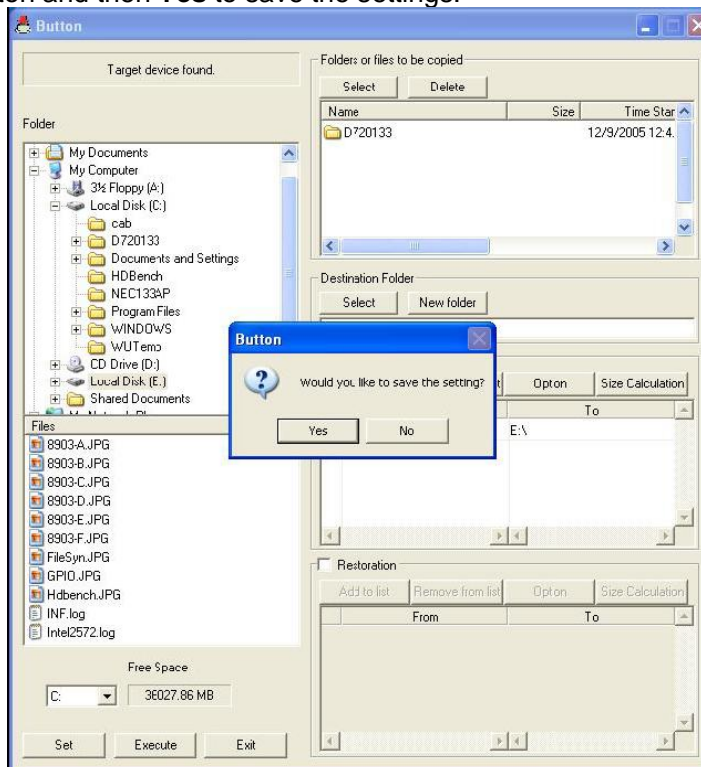


7. Select **OK** button once you have finished changing the option settings.



### Save Settings and Execution

1. Press **Set** button and then **Yes** to save the settings.



2. Click the **Execute** button to begin backup or restoration immediately.
3. For push button backup or restoration, you need to exit the Button application first by clicking the **Exit** button.
4. Once you have exit the application, push the button on the enclosure. If all the settings are correct, backup / restoration will commence automatically.

**Notes**

Please note that there is no warning message for the following issues.

**1. Write Protect**

When files are copied to the enclosure which has write protection, the Button application will be executed but the write-protected files will not be copied to the enclosure. Please make sure that write protect function on the file is disabled first.

**2. Sharing Violation**

Make sure to close all the shared files before running the Button application. If files are opened, overwritten operation will not be performed.

**3. Overwriting Read-Only / Hidden files**

This application does not overwrite Read-Only or Hidden files.

**4. Shortage of Disk Space**

When disk space is shortage, only files whose size equals to the free space are copied. Before executing this application, please check the size of files to be copied and the free disk space first.

