

inspiro with iLapel microphone and MLxi

Quick Reference Guide

A pupils radio aid system consists of two parts
FM Transmitter (worn by teacher)
FM Receivers (worn by pupil)

For audio shoe advice visit
www.phonak.com/eschooldesk



inspiro transmitter
(worn by teacher)



Audio Shoes

MLxi receivers
(worn by pupil)

Inspiro can be worn using either...Belt Clip OR Lavalier Cord



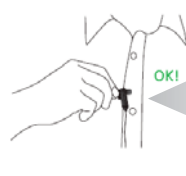
To release the belt clip
Squeeze the clip release
Slide the clip off the inspiro
button.



To Release the lavalier cord
Simply pull the clip out of the
inspiro button.



Using iLapel



Important

- Face the iLapel the correct way, as shown.
- Do not cover microphone holes
- Fully extend the iLapel cable for maximum effective range

Key

- 1 On/Off Switch
- 2 Monitor
- 3 Mic Mute
- 4 Synchronise
- 5 Keylock / Back
- 6 Up / Down
- 7 OK
- 8 Audio In
- 9 Mini USB



On/Off Slide Switch

To turn on, click the slider to the left. You will see a green mark and the LCD will turn on.



Microphone Mute

To toggle between mic active and inactive, push the mute button. mic active mic inactive



Synchronise

To Synchronise the receivers, push the sync button within 50cm of the receivers



Keylock

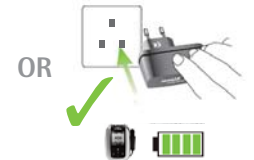
To activate keylock, push the key button, and then the OK button. To deactivate the keylock, repeat this process.

Audio Input



Standard 3.5mm audio cable

Charging



Using MLxi

Phonak's MLxi is the most sophisticated, yet easiest to use receiver in the world. Simply attach the MLxi to the hearing instrument using the correct audio shoe. If necessary, synchronise the MLxi using the inspiro transmitter - **start teaching!**



3 pin Euro connector
Push button (Disabled)

For more information about your inspiro and how to use other functions please consult the user manual, or visit www.phonak.com/eschooldesk

PHONAK

life is on

inspiro with iBoom microphone and MLxi

Quick Reference Guide

A pupils radio aid system consists of two parts
FM Transmitter (worn by teacher)
FM Receivers (worn by pupil)

For audio shoe advice visit
www.phonak.com/eschooldesk



inspiro transmitter
(worn by teacher)



MLxi receivers
(worn by pupil)

Audio Shoes

Inspiro can be worn using either...Belt Clip OR Lavalier Cord



To release the belt clip
Squeeze the clip release
Slide the clip off the inspiro
button.



To Release the lavalier cord
Simply pull the clip out of the
inspiro button.



Wearing iBoom



Open loop and put
iBoom over ear



Tighten iBoom loop
around ear



Adjust iBoom as required
and use clip



A. Do not bend
B. Do not pull/twist

Key

- 1 On/Off Switch
- 2 Monitor
- 3 Mic Mute
- 4 Synchronise
- 5 Keylock / Back
- 6 Up / Down
- 7 OK
- 8 Audio In
- 9 Mini USB



On/Off Slide Switch

To turn on, click the slider to the left. You will see a green mark and the LCD will turn on.



Microphone Mute

To toggle between mic active and inactive, push the mute button. mic active mic inactive



Synchronise

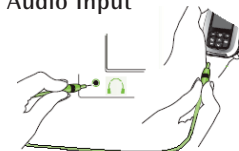
To Synchronise the receivers, push the sync button within 50cm of the receivers



Keylock

To activate keylock, push the key button, and then the OK button. To deactivate the keylock, repeat this process.

Audio Input



Standard 3.5mm audio cable

Charging



Using MLxi

Phonak's MLxi is the most sophisticated, yet easiest to use receiver in the world. Simply attach the MLxi to the hearing instrument using the correct audio shoe
If necessary, synchronise the MLxi using the inspiro transmitter - **start teaching!**



3 pin Euro connector
Push button (Disabled)

For more information about your inspiro and how to use other functions please consult the user manual, or visit www.phonak.com/eschooldesk

PHONAK

life is on