
CONTENTS

Chapter I	Introduction.....	1
I.	Overview.....	1
II.	Environment requirement	2
Chapter II	Installation and Uninstallation.....	3
I.	Installation.....	3
II.	Uninstallation	6
Chapter III	LEDSHOWT9 Overview.....	7
I.	Understand LEDSHOWT9 software interface	7
II.	The program structure.....	8
III.	The menu and toolbar buttons	10
Chapter IV	Program Editing.....	17
Chapter V	Edit in Detailed.....	24
I.	Pictures.....	24
II.	Video	27
III.	Text.....	28
IV.	Table.....	32
V.	Database.....	33
VI.	Clock	38
VII.	Weather.....	41
VIII.	PowerPoint, Word, Excel	43
IX.	Flash, Gif.....	44

Chapter VI Notifications and Sports Scores	46
I. Notifications	46
II. Sports Scores	46
Chapter VII Timing Play and Command	49
I. Timing Play	49
II. Timing Command.....	51
Chapter VIII A8 Content Management	54
I. The parameter settings.....	54
II. Send a picture to the video receiver card	55
III. Send the program file to the receiving card.....	59
Chapter IX Power and brightness control	60
I. The power control	60
II. The brightness adjustment	61
Chapter X Remote operation	63
I. Set the remote control server.....	63
Chapter XI Software settings	66
II. Other settings	67
Chapter XII User Management	70
Chapter XIII FAQ	72

Chapter I Introduction

I. Overview

LEDSHOWT9 is professional software for LED display and control, which uses advanced technologies, and has rich features, superior performance, good interface and easy to use.

LEDSHOWT9 support video, audio, images, text, Flash, Gif and other forms of media file playback; support for Word, Excel, PPT display; support database information display, support clock, time calculator, weather display; support for external video signal (TV, AV, S-Video) playback. Software supports multi-page multi-region program editing, providing a rich and flexible video effects, sub region effects, as well as 3D effects. The software gives you a platform which can full extend your imagination and help you make a vivid program.

LEDSHOWT9 supports T9, A8 (receiving card), support sending cards(T7) send mode and Gigabit Ethernet send mode. LEDSHOWT9 can control more than one LED display one a PC. LEDSHOWT9 supports smart parameter setting and quick smart parameter settings.

LEDSHOWT9 support manual color-correction and, camera assistant color-correction. LEDSHOWT9 is compatible with other professional calibration equipment.

LEDSHOWT9 provides a rich language support, now supports Simplified Chinese, Traditional Chinese, English, French, Japanese, Korean, Russian, Thai, Polish and Spanish.

II. Environment requirement

The software supports Windows XP \ Windows Server 2003 \ Vista \ Windows 7 and other operating systems. The recommended is:

- CPU, 2.0 GHZ or above;
- Memory, 1GB or more;
- Graphics card, 256MB memory or more;
- Gigabit Ethernet Or Send card;

Users can adjust the configuration according to the actual situation. There are the total number of pixels, the complexity of programs, and video size and definition .

Chapter II Installation and Uninstallation

I. Installation

1. Open the CD and double-click the Setup icon



LEDSHOWT9_Setup_xx.x.xxxx.exe

(eg. LEDSHOWT9_Setup_11.2.1000.exe), select the software installation language and click "OK".

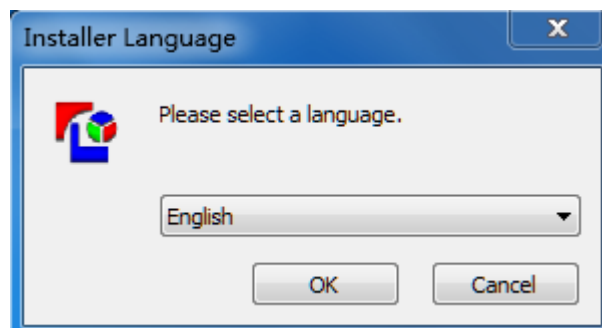


Figure 2-1 select the installation language

2. Into the installation welcome screen. Click "Next"

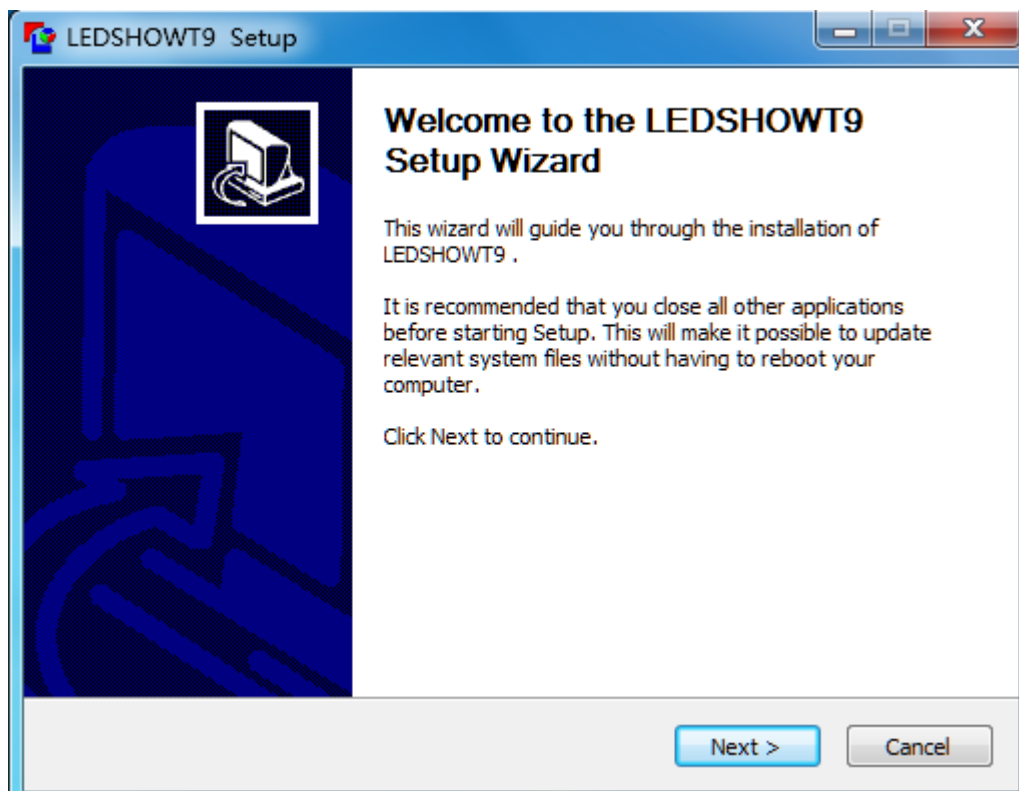


Figure 2-2 Setup Wizard

3. Confirm the permission. Click "I Agree".

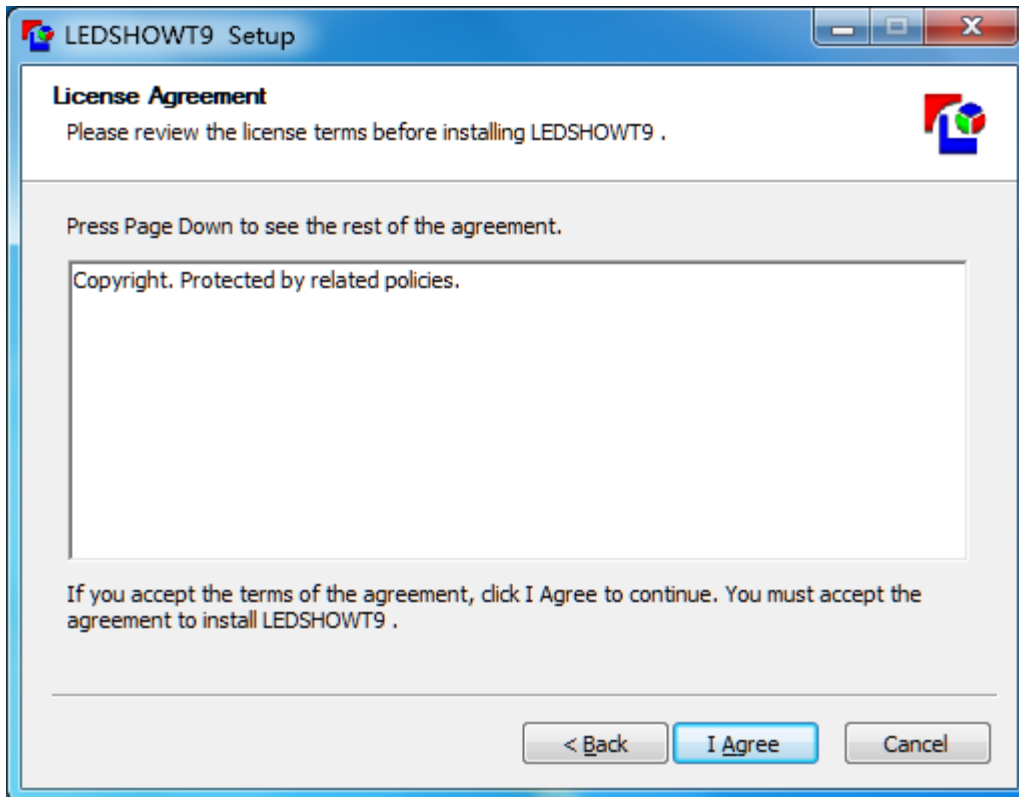


Figure 2-3 License Agreement

4. Select the installation directory, and confirm the installation. Click "Install"

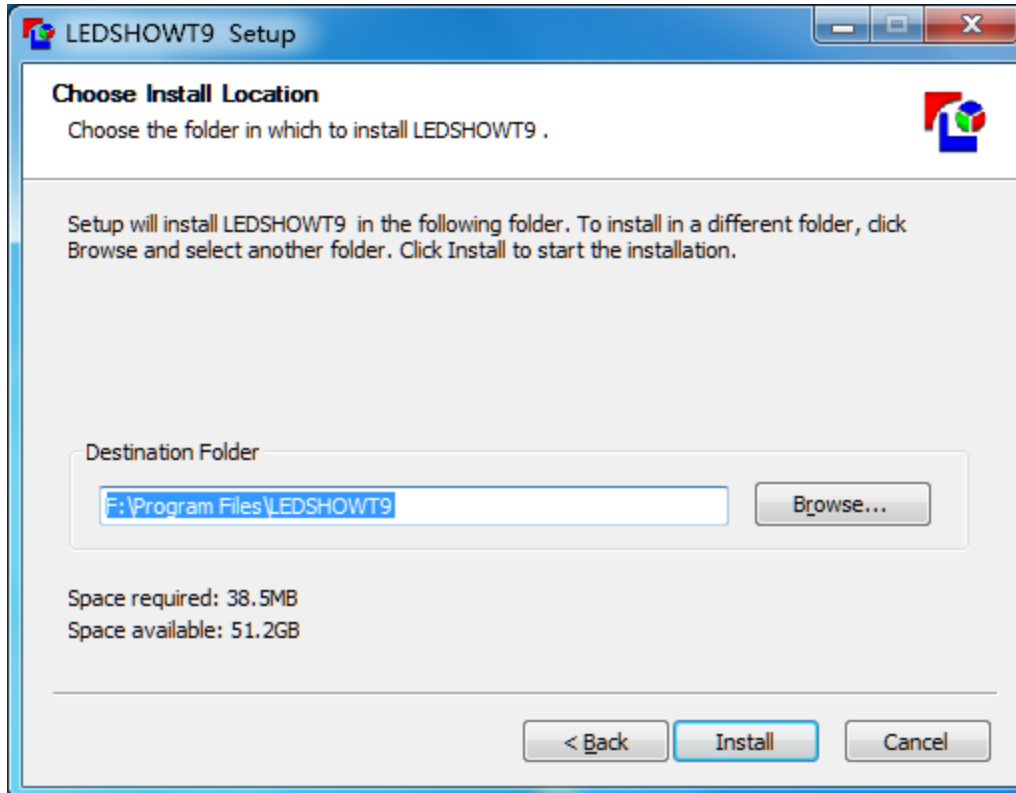


Figure 2-4 choosing a location

5. Confirm the installation is complete. Click "Finish"

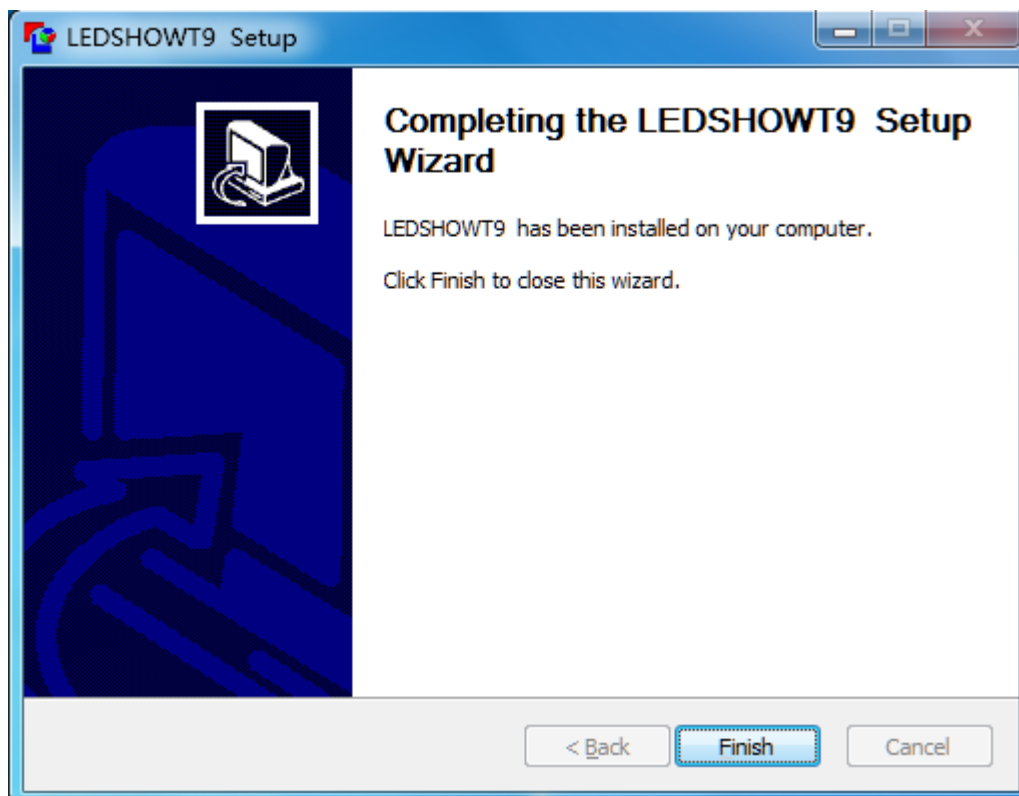



Figure 2-5 installed

6. To complete the installation, the system will automatically generate a desktop shortcut , double-click or open the software.

II. Uninstallation

In the lower right corner of the computer the "Start" menu, select "All Programs → LEDShowT9 → Uninstall ", the software can be uninstalled.

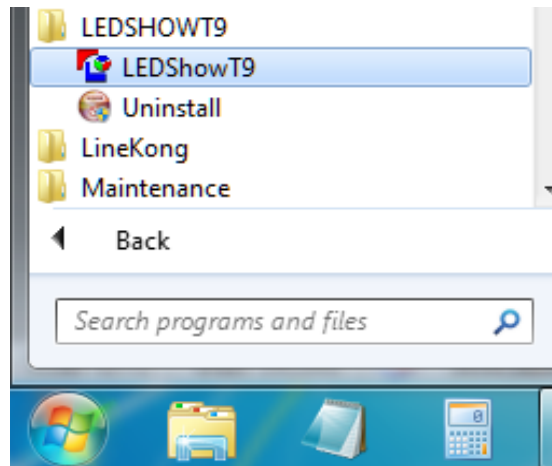


Figure 2-6 Uninstalling LEDSHOWT9

Chapter III LEDSHOWT9 Overview

I. Understand LEDSHOWT9 software interface

Start the software, you can see the software interface shown in Figure 3-1. Consists of two parts: the playback window and the main interface.

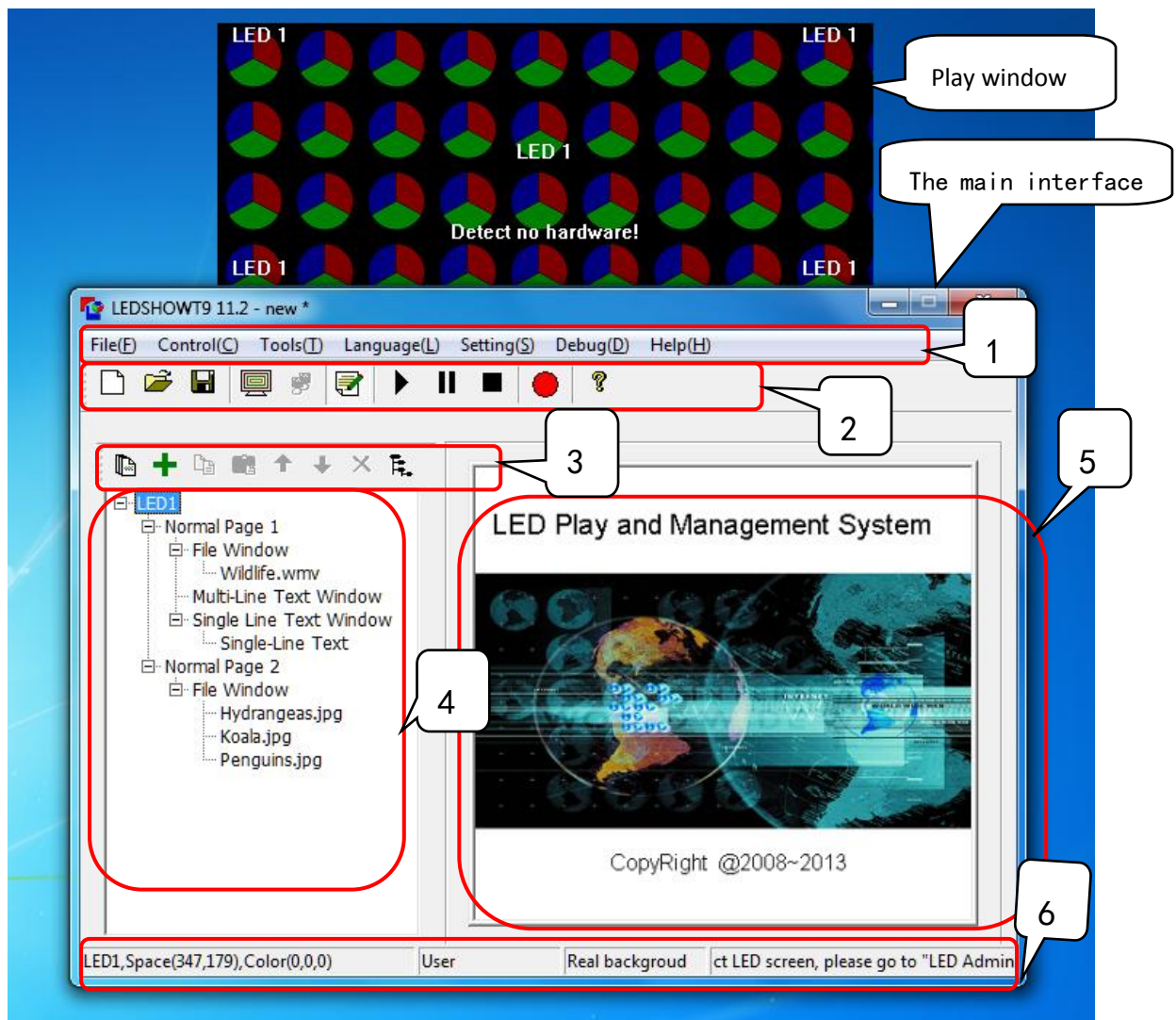


Figure 3-1 LEDSHOWT9 the main interface

1. The playback window

LED large-screen playback window is a preview window. In the window to see the contents of the play is the LED display on the big screen. Note: When set to "Screen

capture mode " or use the T7 send cards, any player in the content window covered in the playback window or play the content on the big screen will be displayed in the LED.

2.The main interface

The main interface is divided into six regions, as follows: 1: menu; 2: The main toolbar; 3: program editor toolbar; 4: The program tree area; 5: program property area; 6: The status bar.

II. The program structure

LEDSHOWT9 regional program tree composed by the four, followed by LED screen, program pages, the program window and the playback bar.

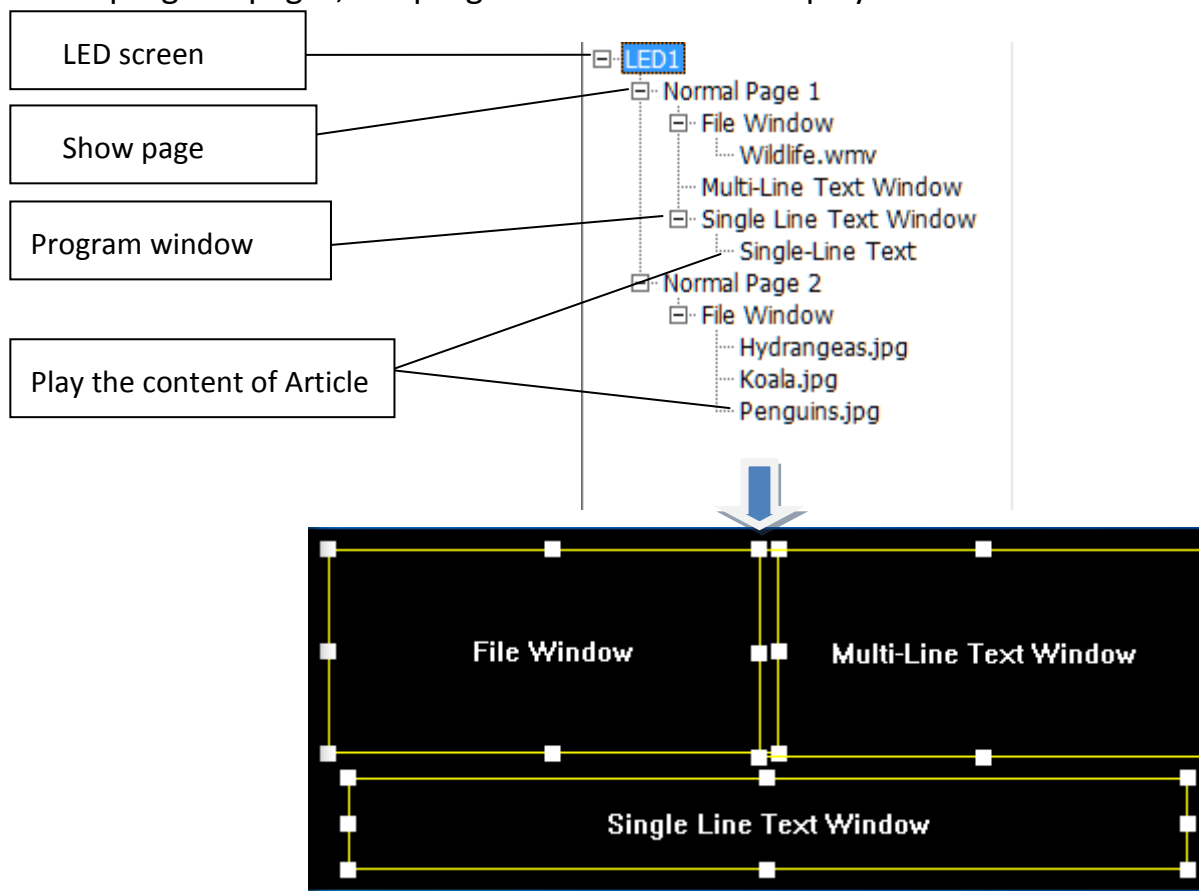
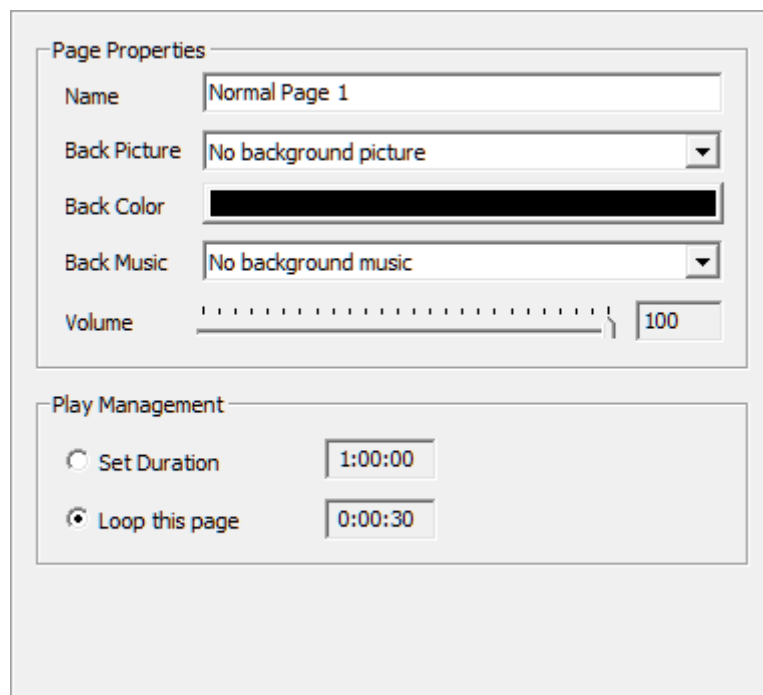


Figure 3-2 shows schematic form

1 .LED screen: user-friendly LED big screen, big screen display by its decision. Each "LED screen" is a parallel relationship between the LED screen, you can add more than one program page.

2. Programme page: program page refers to a set of user-defined window and shows a collection of programming content. Each "show page " and the order of play between the parallel relationship.



Page Properties Figure 3-3 shows Figure

program window: the window is the broadcast program partition window, decided to show page layout and stack-level programs. Each "Show window " between the parallel and simultaneous playback relationship.

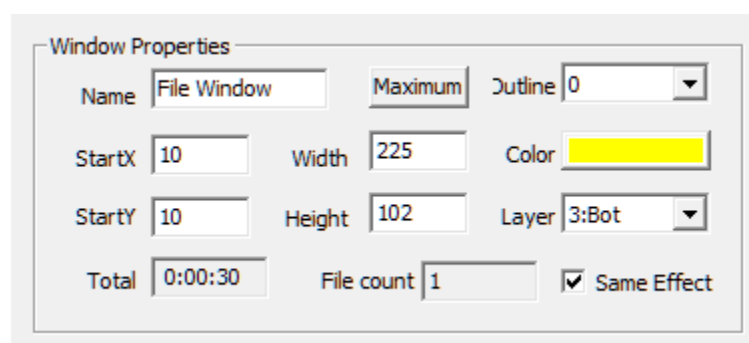


Figure 3-4 shows the window attributes map playback Article: LED screen in the specific content. Including video, pictures, text, spreadsheet, database and other files, and clock, weather forecast, the external video. Each "play content " is tied and the order of play between the relationship.

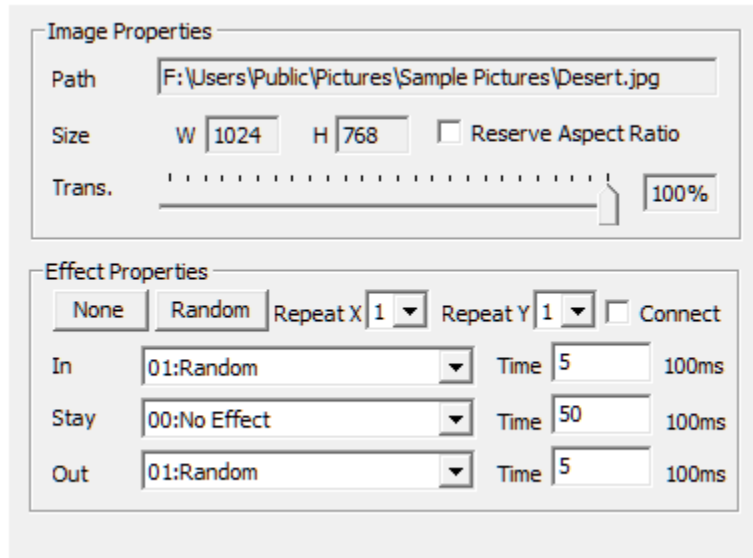


Figure 3-5 shows the contents of property map

Note: Each LED screen shows the contents page and play the same level are parallel between the relationship and in turn to play, and each program is a parallel between the window and the relationship between both players.

III. The menu and toolbar buttons

1.The main menu



Figure 3-6 Main menu bar

1.1. The File menu

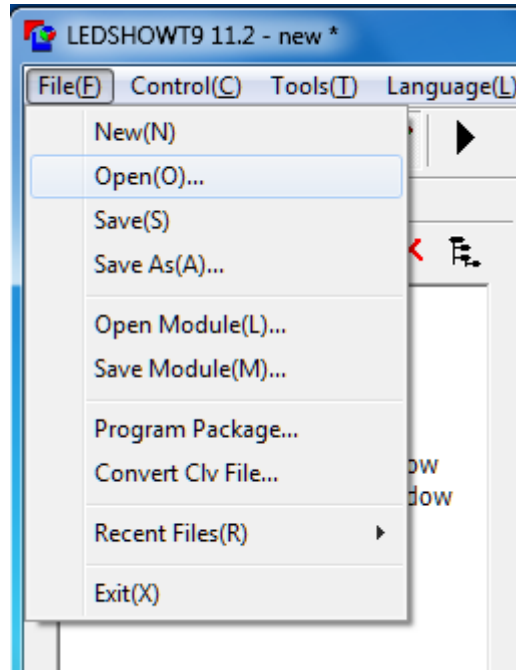


Figure 3-7 File menu bar

On the File menu, the main achievement of program files (*.t9 files) and the template file (*.t9temp file), open and other basic operations....

1.2. Control on-screen menu

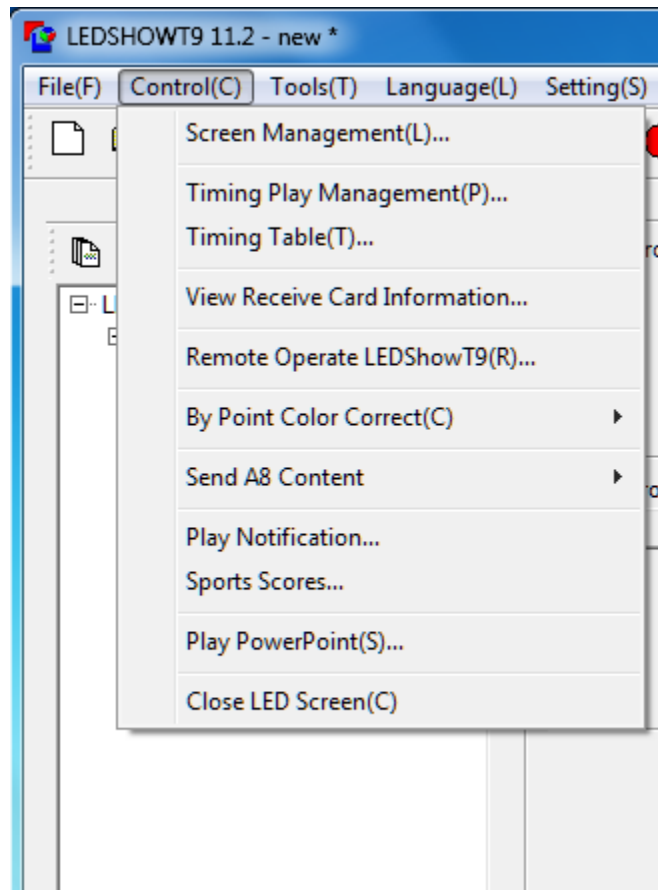


Figure 3-7 Control Screen Menu

Parameters used to set the playback window, the program's automated play, view the version number to receive cards, temperature (need to install temperature sensors), control areas, etc. For more information, remote desktop, large screen brightness adjustment, emergency notification, sports scores, PowerPoint files, etc. Special content playback control.

The "Send the contents of the A8, " is a special menu A8 dual-mode card, memory card to the receiver send video images or edited program; "off the large screen display" is used to close / open LED display side of the display. After the closure of the contents of a computer monitor is no longer visible on the screen simultaneously

sent to the LED display, suitable for editing program does not want to synchronize the information displayed on the computer monitor to display the time used.

1.3 Tools menu

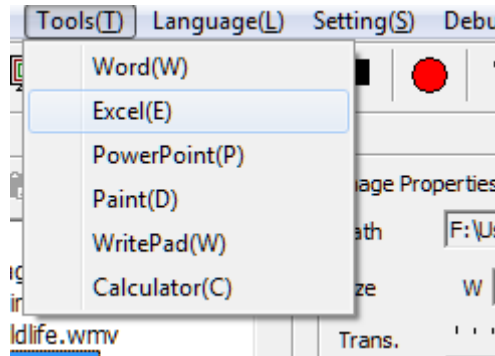


Figure 3-8 Tools Menu

Call the system software such as Word, Excel, PowerPoint, brushes, WordPad, etc., to facilitate editing program.

1.4. The language menu

For software installation is complete, change the software language.

1.5. Setup menu

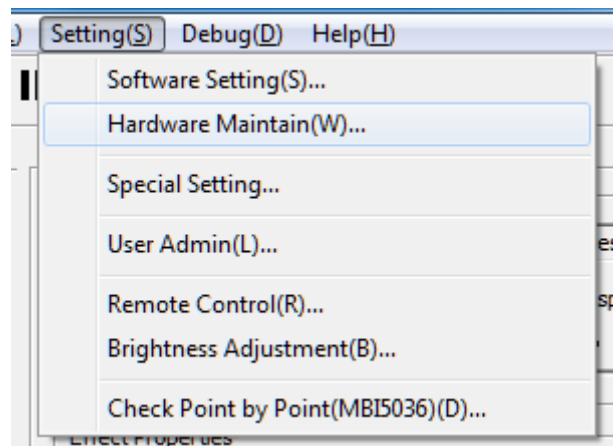


Figure 3-9 Setup Menu

1、 Software settings: The set of software-related, including the automatic settings, network settings, other settings three tabs. Which the network settings for remote

operation

- 2、 Hardware maintenance: For the upgrade of the control card, back to the time parameters, and the software lock.
- 3、 Special settings: The settings used for special modules.
- 4、 User Management: LAN for remote management.
- 5、 Remote Control: Remote control LED screen brightness, temperature, power supply switch (requires multi-function card).
- 6、 Brightness: The brightness of the display, temperature control, and power switch. (Requires multi-function card)
- 7、 By-point detection: To detect the polarization voltage LED lights to determine whether there is a blind points. (Module IC is 5036.)

1.6. Debug menu

The menu offers a variety of tests used in the production, installation and commissioning of the display mode.

1.7. Help menu

Software used to view the help documentation, version information, and computer-related information. One can view the computer information to the CPU, memory, graphics cards, network cards, sound cards, BIOS information.

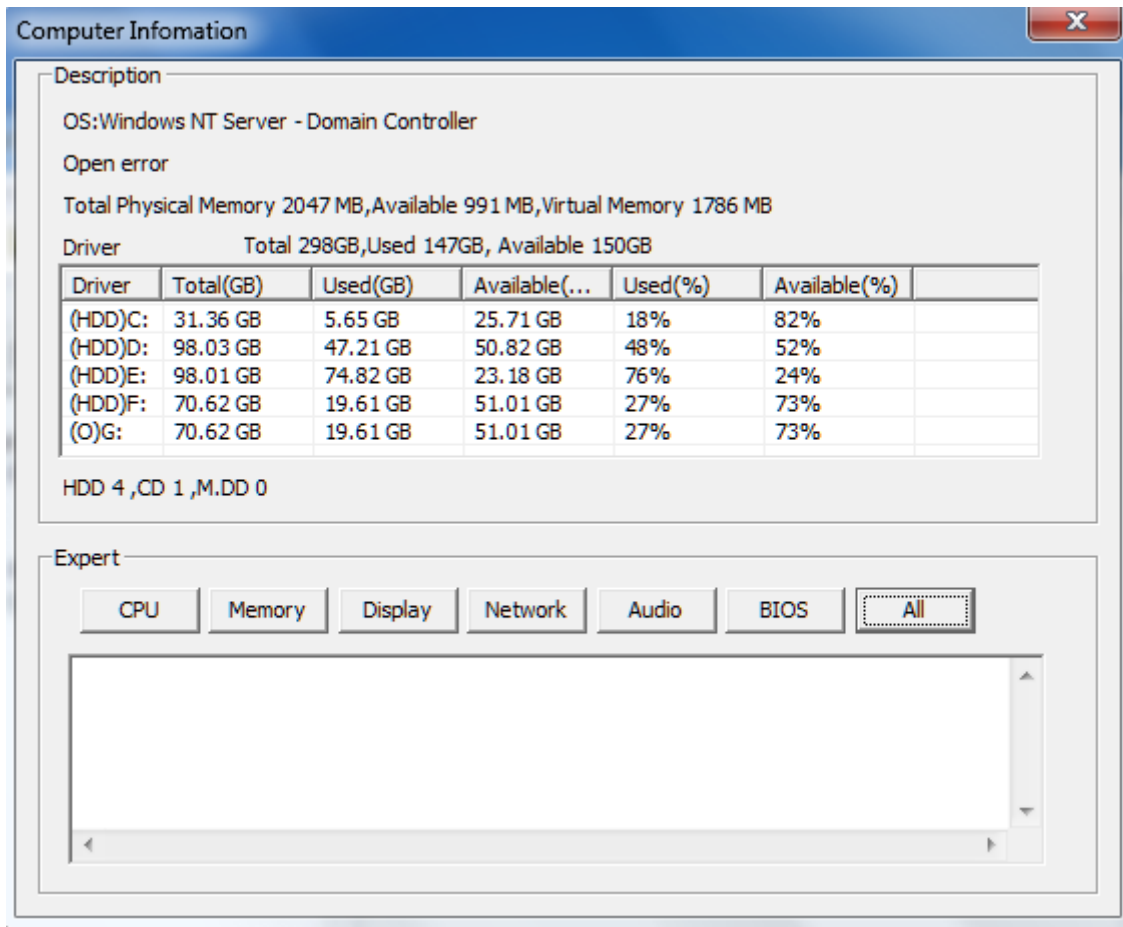


Figure 3-10 computer configuration information

2. The main tool bar

Shows the main toolbar provides file operations, play window show / hide, dual monitor switch, operation and A8 broadcast program recording and other functions (Figure 3-11).



Figure 3-11 the main toolbar

3. The playback page context menu

In the play window, click the right mouse button pop-up menu (Figure 3-12), support for various program files and broadcast operations for page switching.

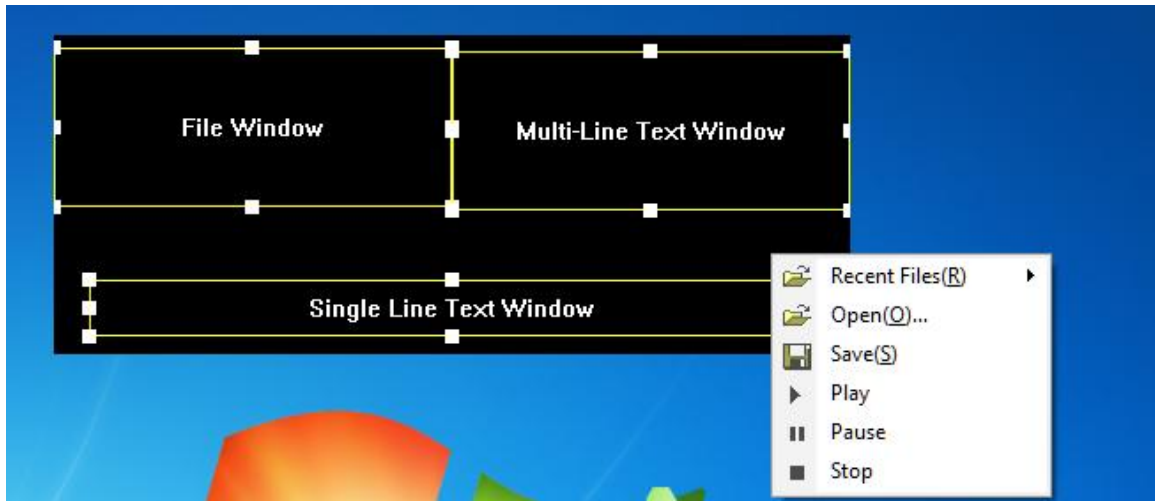


Figure 3-12 Play page context menu

4. Program editing toolbar



Figure 3-13 shows the Edit toolbar

Left to right:

1. new program page: Add the selected playback window shows page.

Add the contents of the window and play λ Article: position in the corresponding window or play the content to add programs section.

2. Copy: Copy the selected items and all of the following content.

3. Paste: paste the copied content.

4. Move: Move the selected content to the front.

5. Move Down: Move the selected content to the back.

6. Delete: Delete selected items and all of the following content.

7. Collapse / expand the program tree: Collapse / Expand the selected item, all the contents.

Chapter IV Program Editing

● Set the LED Screen Size

LED screen size must be set correctly, otherwise programming may show only finished playing a part, or not display properly.

Set Method: Select menu "main menu screen → screen → control management ", the pop-up screen management window, where to set the number of LED screens, starting position, size (Figure 4-1).

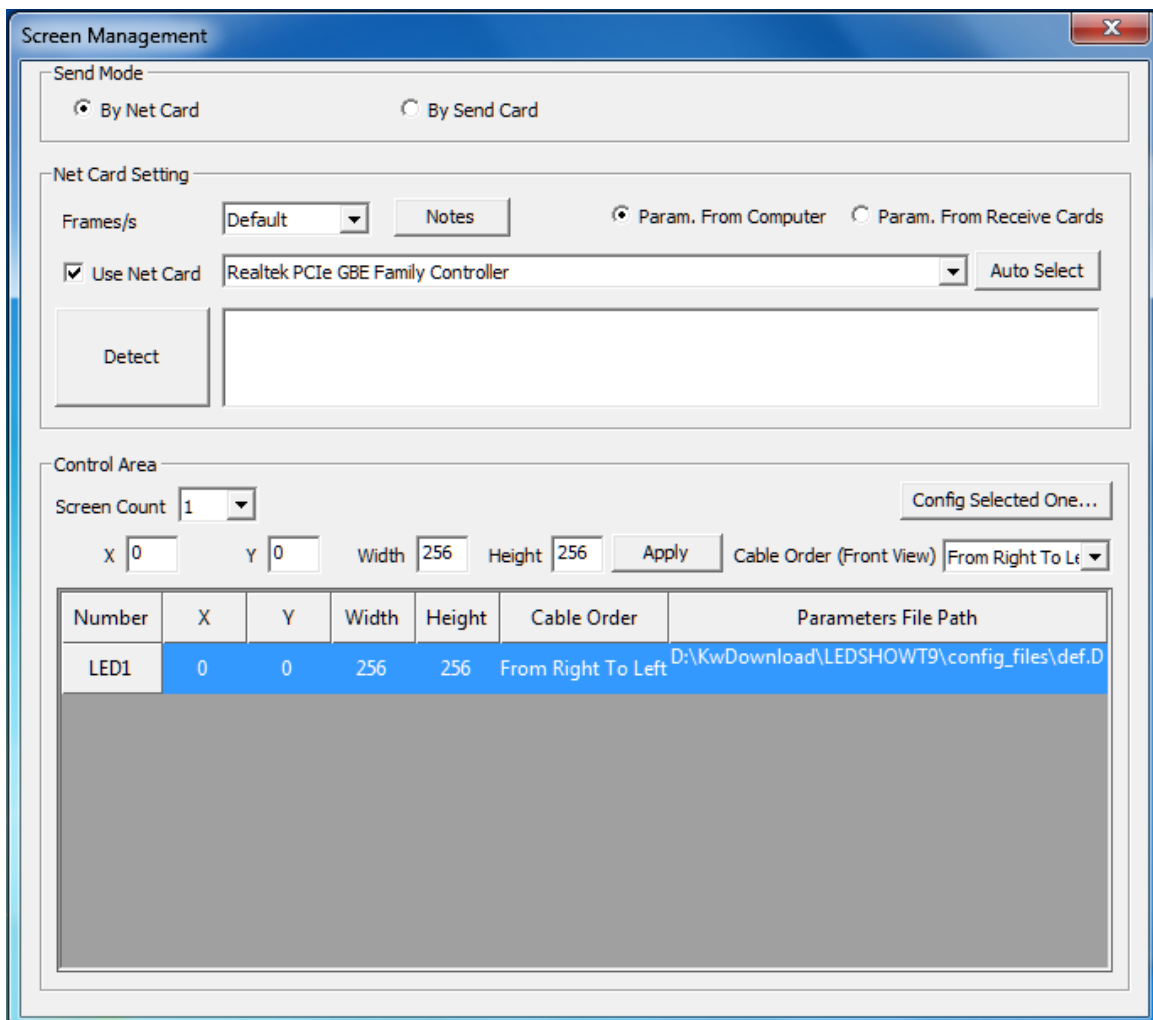



Figure 4-1 Screen Management window

Note that here the size of the corresponding LED screen LED display in the size of the actual, general, and LED large screen set to the same size.

● The new program page

You can edit the toolbar button mouse click program

 , Or click the button

 Pop-up menu (Figure 4-2) shows the new page.

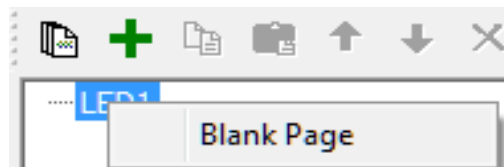


Figure 4-2 shows the new page

Establish program page, right side of the main interface will be shown in the program related properties page (Figure 4-3), generally use the default parameter.

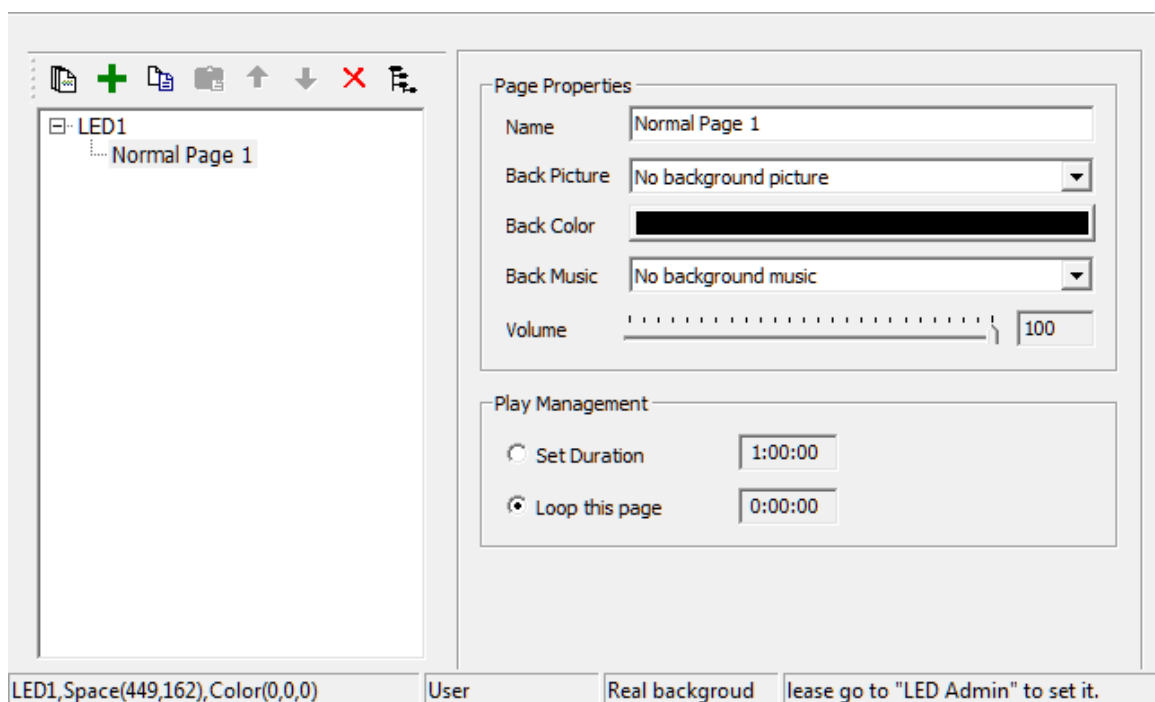


Figure 4-3 shows page and its properties

Page in the program can set the page properties window the following attributes:

-
1. Name: Modify the name of the program pages;
 2. Background Image: You can set a picture as a background image on page of the program;
 3. Background color: Click the color bar can choose any color as the background color of the page program;
 4. Background music: You can set an audio file as background music page of the program;
 5. Volume: Set the volume level of the background music;
 6. Player Management: Setting page of the program broadcast time.


One way: Specifies the playback duration. The program page to play a set time, a program to jump to the next page play.

Second way: wait for completion of the program broadcast page. Wait for the page program after playing all the content, jump to the next page shows play.

● Add the Program Window

1. Add the program window

Establish program page, right click "show page" node or click the button on the toolbar program

, Pop-up menu to add programming window (Figure 4-4). Shows the location of the window can either drag the mouse can also be set using the coordinates. A program page that contains any number of windows, window size and position can be set.

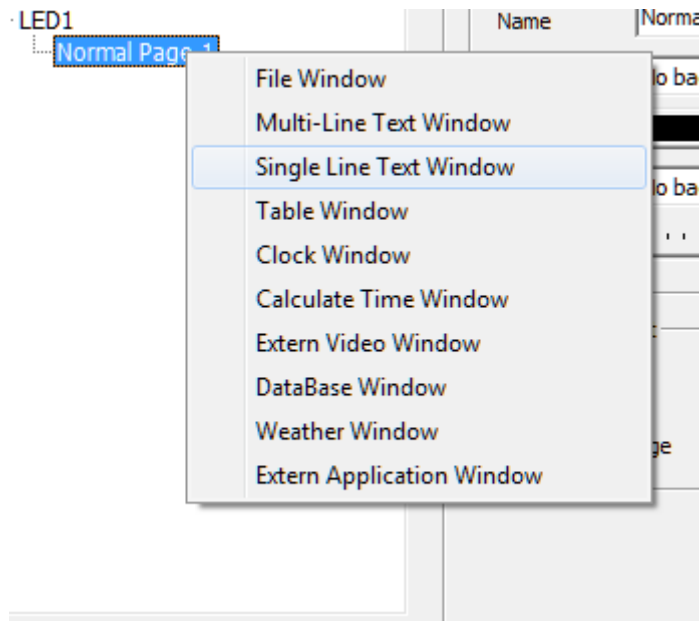


Figure 4-4 shows the window to add

In accordance with the window to accommodate the different content, divided into the following categories:

1. Document window: The window where you can play video, pictures, text, txt files, tables, and flash, gif, etc.;
2. multi-line text window: window can display multiple lines with complex formatting text;
3. single line text window: window can display a line of text with a simple format;
4. table window: a window to display the form;
5. clock window: a window to display analog clock or digital clock;
6. Time window: window can display is timing, the countdown;
7. external video window: The window where you can play external video. External video contains an external video capture device input, such as cameras, video cameras, TV cards, DVD, etc;
8. Database window: The window in the database can be displayed as a table form;

9. weather window: a window to display the weather forecast of domestic and international cities (to be connected to the Internet);

External window: external executable program can be displayed in the window;

2. Set the program properties

All the programs share a common property of the window (Figure 4-5)

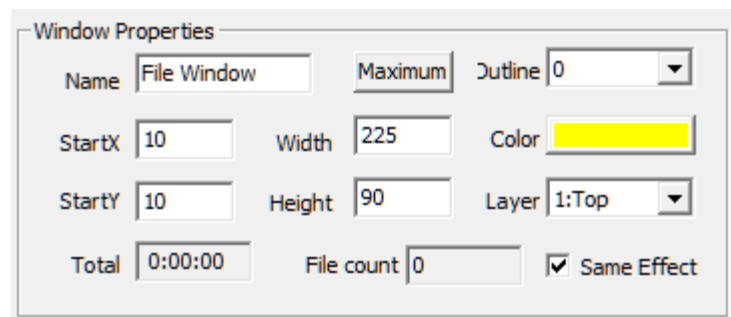


Figure 4-5 shows the window attributes

1. Name: easy for users to distinguish between different window name can be set.
2. Maximize: make the window full screen in the LED screen.
3. Border: you can set the window border line width, in pixels.
4. Color: used to select the color of window border line.
5. Starting point for X: Window LED screen relative to the upper left corner of the left edge of the vertex position, in pixels.
6. Starting point for Y: the upper left corner relative to the LED screen on the vertex position of the border, in pixels.
7. Width: window width, in pixels.
8. Height: window height, in pixels.
9. Level: the window of the program page in the stack position relationship, "1: top-level" as the first.
10. Total length: the window all the time required to broadcast.

- 11. Number of documents: This window shows the number of documents.
- 12. the same movie: set the window to play the content of all programs use the same effects whether article

● Add the playback section

Add a window, according to the different window; add the appropriate content broadcast articles. Here to document that the window of the picture, right click "show window " node or click the button, pop-up menu. Select "Add Picture" pop-up file selection dialog. Select a picture file can be used to play. After adding the corresponding LED window and the main interface as follows:

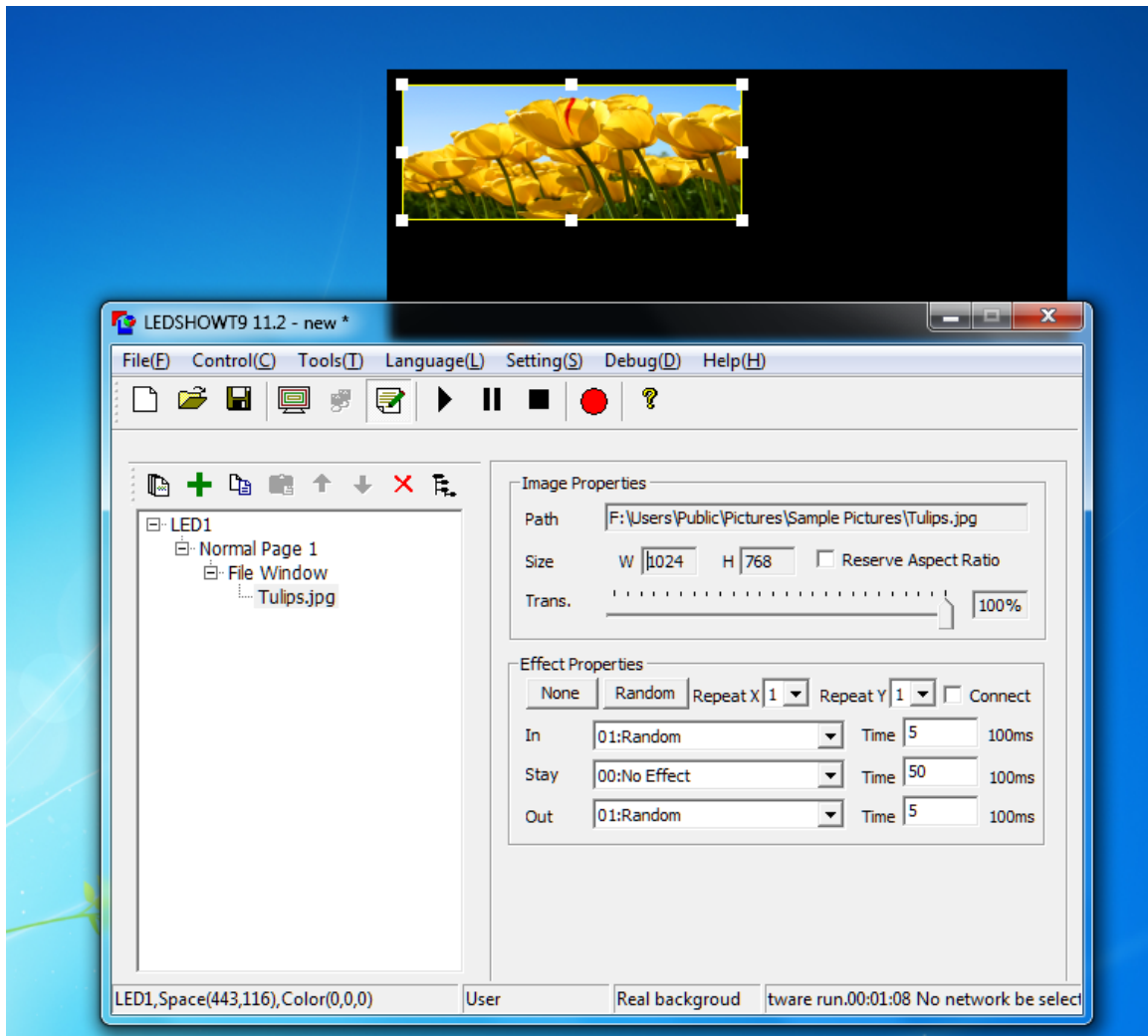


Figure 4-6 LED window effect

To this, programming the entire process to complete. According to actual needs can then add and modify content, detailed operation described in the following chapters.

Chapter V Edit in Detailed

I. Pictures

1. Add a picture

Create a new "file window. " Right click "file window " or click the button

, Pop-up menu and click "picture file", add one or more pictures.

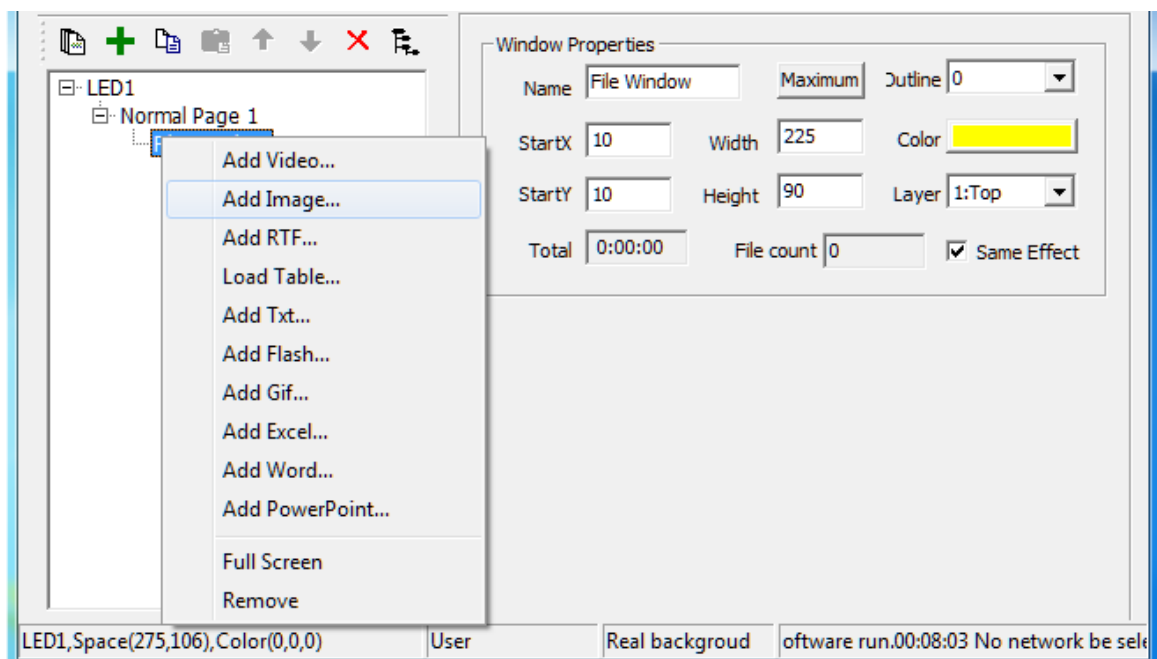


Figure 5-1 Add a picture

2. Image properties

Supports all image formats (BMP / JPG / PNG ...), image files, including the properties and effects (see Figure 5-2).

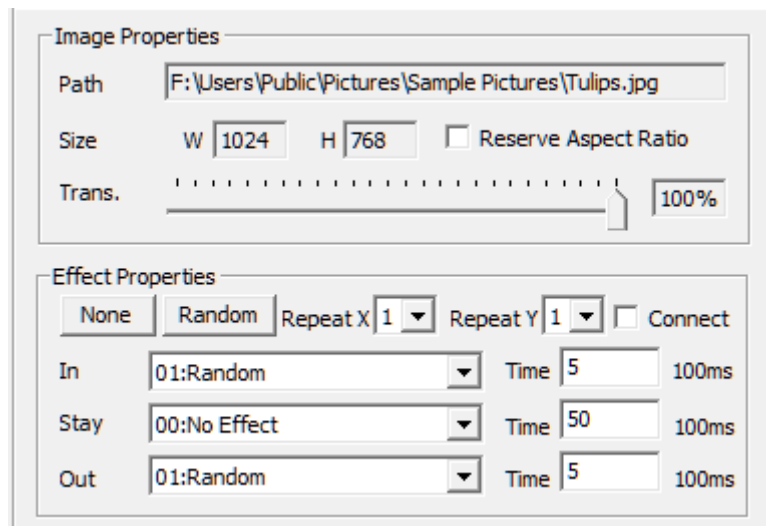


Figure 5-2 Picture Properties



1. Full path: file path where the details of the computer.
2. Original size: width and height of the original image.
3. Maintain the aspect ratio: the proportion shown by the original pictures.
4. Transparency: adjust the picture shows transparent effect free.

3. Effects settings

- 1.No special effect: the abolition of all effects shortcut buttons;
2. Random effects: set all effects for the random effect;
3. Cohesion: a program file is played before and after effects of a special effects show the same admission and at the same time, this set will not be a black screen after the player;
4. Effects repeat: You can put up window is divided into 16 small sections, use the special effects, so that effect is more delicate;
5. Approach: when the screen into effect type;
6. Appearance: screen type exit effects;
7. Stay: pictures entering appearances before and after time spent in units of 0.1

seconds. Choose to stay Shihai flash features that make pictures more attractive attention;

8. Time: speed is 0.1 seconds, that the current action to complete the total effect of time, the smaller the value, the faster the action, said special effects;


The types of effects are present 50 species:

General	00: No special effects、 01: Random
Edge covering	02: Left cover、 03: Right cover、 04: Covered、 05: Under the cover
Oblique angle of coverage	06: The upper left corner、 07: Top right corner、 08: The lower left corner、 09: The lower right corner
Straight angle coverage	10: The upper left corner、 11: Top right corner、 12: The lower left corner、 13: The lower right corner
Blind	14: Horizontal blinds、 15: Vertical blinds
And closed off	16: Off about、 17: Outside the upper and lower、 18: Closed around、 19: Closed down
Translation	20: Move、 21: Down、 22: Left、 23: Right 24: Move the upper left corner、 25: Move the upper right corner、 26: Move the bottom left corner、 27: Move the bottom right corner
Mosaics	28: Mosaics (Small) 、 29: Mosaics (In) 、 30: Mosaics (Large)
Rotation	32: D-360、 33: L-360、 34: D-180 35: L-180、 36: D-90、 37: L-90

From small to big	38: Intermediate、39: Left、40: Upper right、41: Left、42: Lower right
Around the middle of the	43: Rectangle、45: Diamond、47: Cross
Around to the middle	44: Rectangle、46: Diamond、48: Cross
D	49: A three-dimensional animation、50: Second, three-dimensional animation
Other	31: Gradual change

II. Video

1. add video

Create a new "file window." Right click "file window" or click the button , Pop-up menu and click "video file", add one or more video files. At the decoder (the decoder is recommended: the ultimate decoder) support, the software supports almost all video format, AVI / MPEG / ASF / WMV / RM...

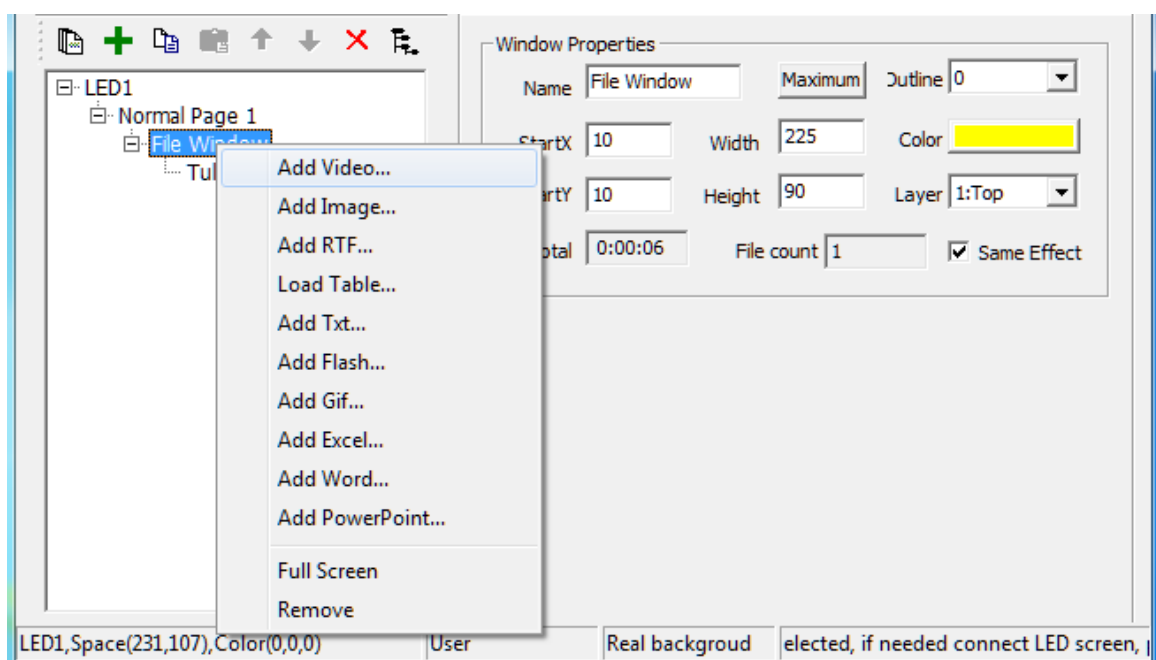


Figure 5-3 Add Video

2. Video Properties



Video file, including all the attributes (Figure 5-4). One path is read-only attribute the original size, volume, transparency, playback duration, progress and remaining time can be adjusted freely.

In addition, LEDSHOWT9 expertise to provide cutting the play area and function of playing time cut, can be intercepted on the part of the screen in the frequency and content of some time to play.

See pictures effects settings.

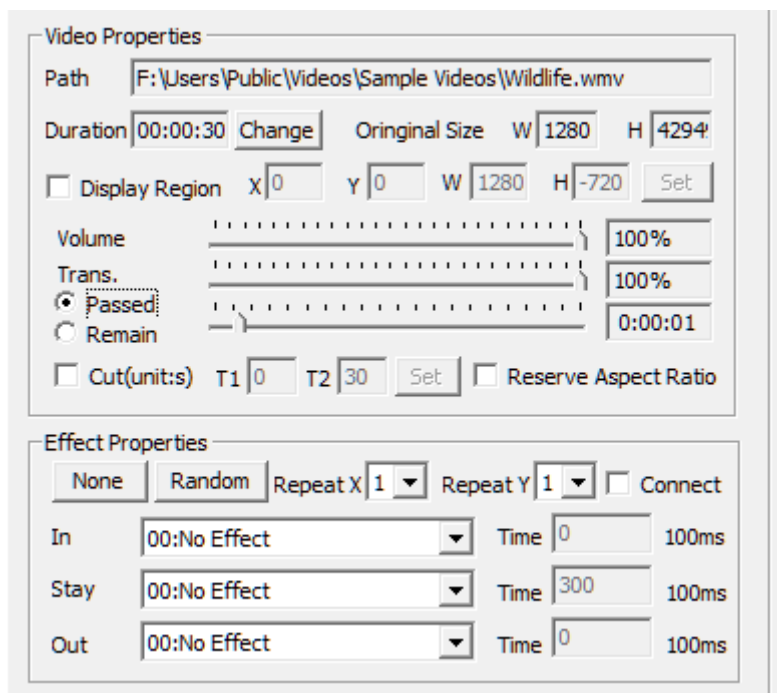



Figure 5-4 shows property video

III. Text

1. The single line of text play

Right click "show page" or click the button

 , Pop-up menu and click "Text Window " to add the single line of text (Figure 5-5). Single line of text allows any set text background color, font, spacing and other display properties. The displayed text can come from a text file, you can also enter from the input box. If you come from a text file, display the content according to changes in the text file automatically updates.

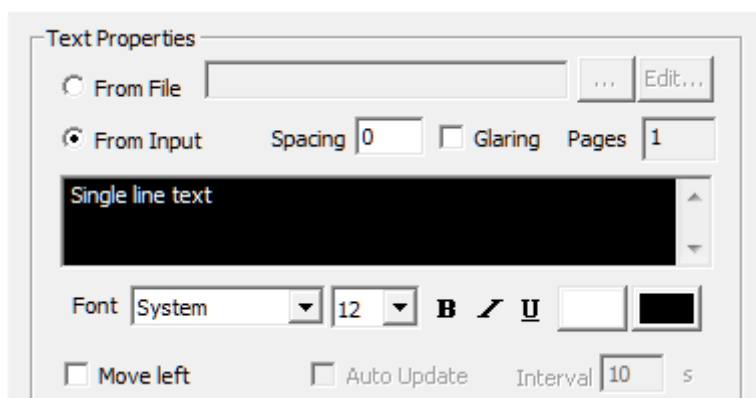


Figure 5-5 shows a single line text attribute

Bright-line text support effect (Figure 5-6)



Figure 5-6 Colorful Effects

Single line of text also supports the effect of a continuous left. Select a row left, you can by playing the number or time to control playback time, scroll through the set number of points per frame, or roll the number of points per second playback speed control (Figure 5-7)

o

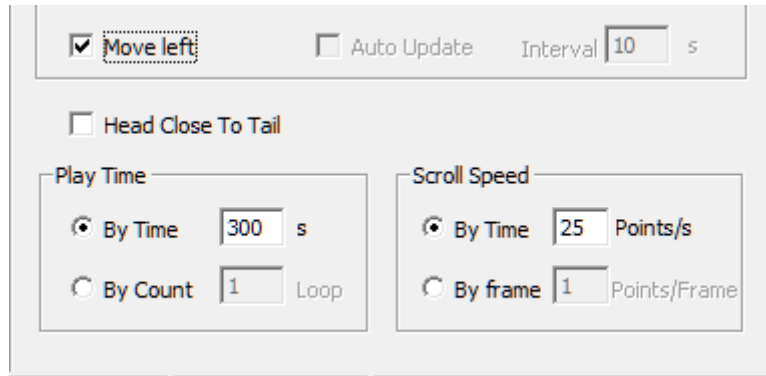



Figure 5-7 line text left control

See pictures effects settings.

2. Multi-line text Play



Add multiple lines of text can right click the "multi-line text window " or click the button

, Pop-up menu, select Add RTF or TXT file, or by creating a new way to create multiple lines of text. Multiple lines of text from RTF files and the new multi-line text, multiple lines of text can be edited through the dialog box (Figure 5-8) for editing.

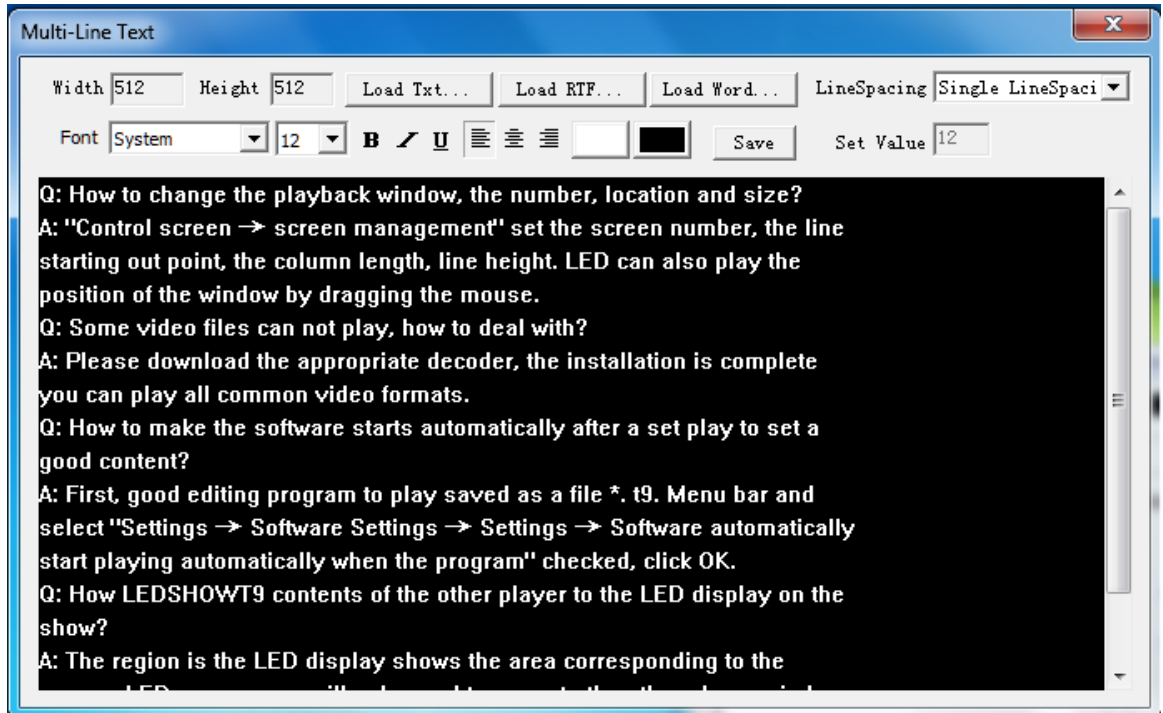


Figure 5-8 multi-line text editor

In the Edit dialog box, you can directly enter text, you can also load the txt, RTF, Word document. While allowing the text display a variety of settings.

☒ After editing is complete click "Save", save as RTF files.

Multiple lines of text to support continuous upward effect. Move selected row when the number of plays or time by

To control the playback time, scroll through the set number of points per frame, or roll the number of points per second playback speed control (Figure 5-9)

o

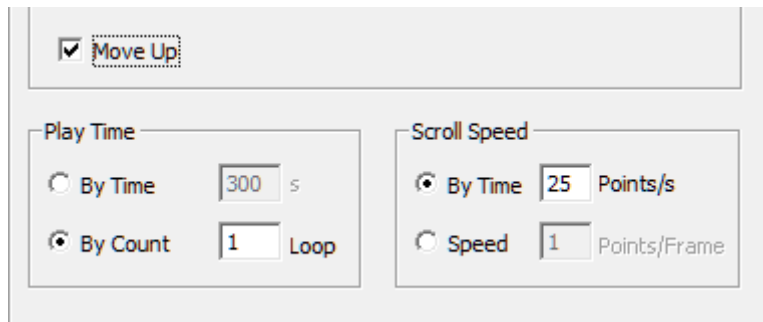


Figure 5-9 shift control on multiple lines of text

IV. Table

Create a "table window. " Right click the "Table Window" or click on the button, pop-up menu and click the "Add Form " to load a previously saved good tbs file or click the "New Form ", enter the table editor dialog box (Figure 5-10).

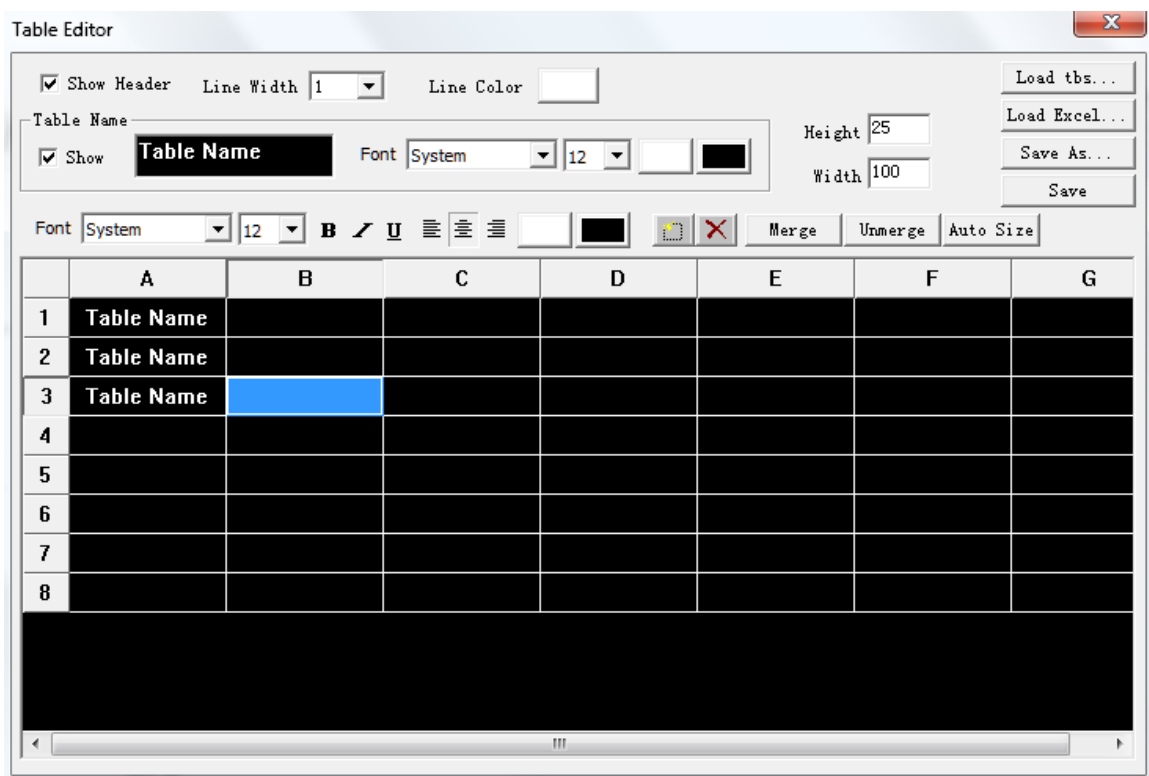


Figure 5-10 Table Editor

1. Merge: merge adjacent cells, the combined data shown in the previous section.

-
2. **Split:** Split the cells have been merged.
 3. **Display the header / Table Name:** Displays the header / table name.
Remove the hook is not shown.
 4. **Automatic Size:** According to the tables in the text table column widths automatically adjust the length to achieve adaptation.

Table of contents can be imported directly, but also from tbs, Excel document to import table data. At the same time can form the effects of display format and display a variety of changes. Such as setting whether to display the header, set the table width, font and form their way of content, whether to display the table name and the font. After editing is complete click "Save" to save the file into tbs, playing

display (Figure 5-9).

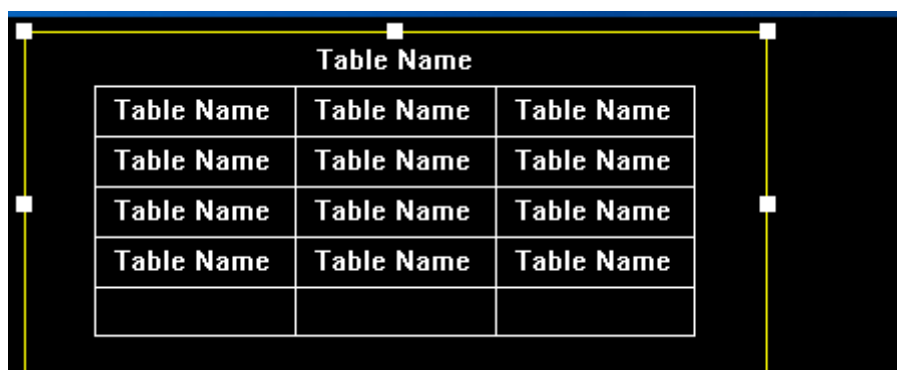


Table Name	Table Name	Table Name
Table Name	Table Name	Table Name
Table Name	Table Name	Table Name
Table Name	Table Name	Table Name


Figure 5-11 Sample Table effect

See pictures effects settings.

V. Database

1. add the database

Create a "database window. " Right click the "Database Window " or click the button

, Pop-up menu and click "Add Database", pop-up database type selection dialog box (Figure 5-12).

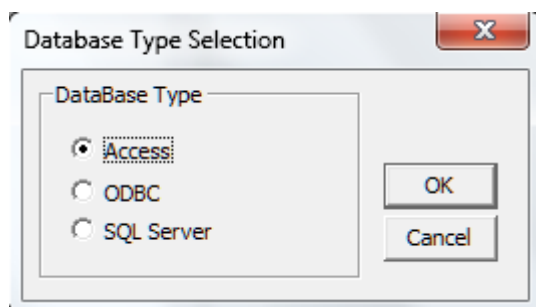


Figure 5-12 Select the database type

Currently LEDSHOWT9 Access and provides direct support for SQL Server database, ORACLE and other databases can be configured to implement ODBC database source.

If the selected Access database file will pop up file selection dialog box (Figure 5-13), select a Access database file.

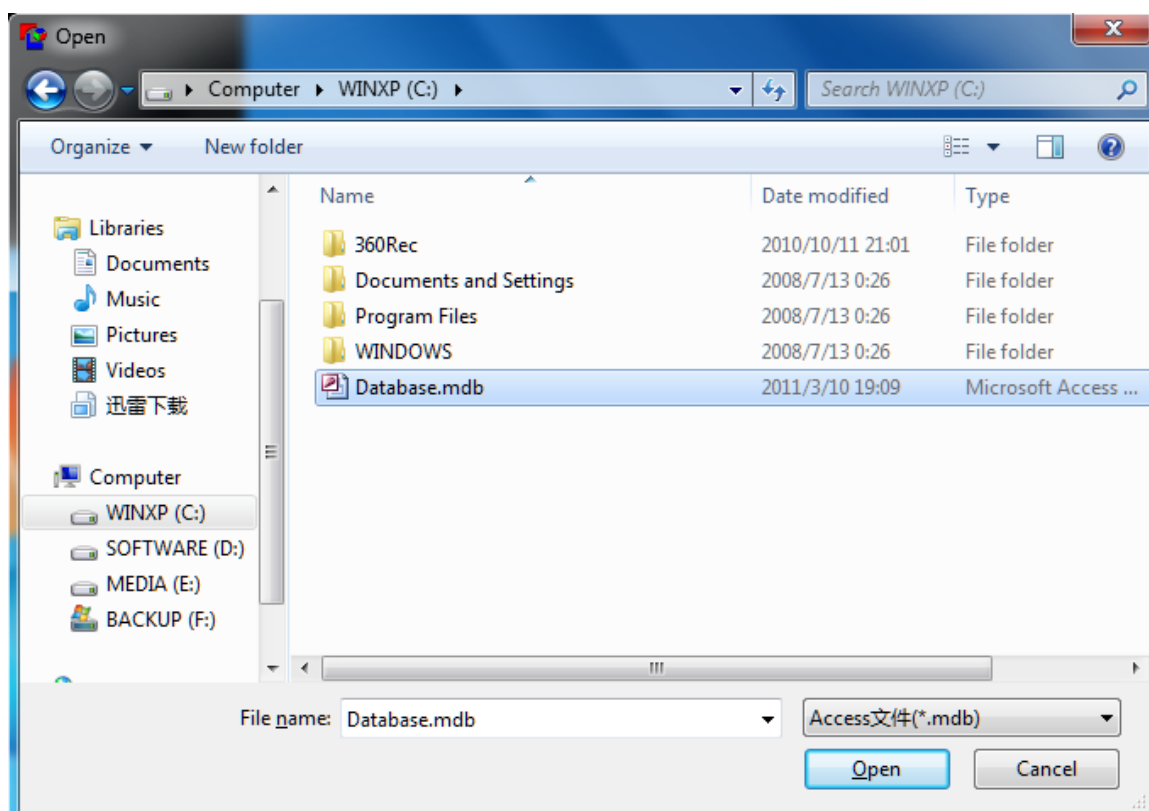


Figure 5-13 Adding Access database file

If you use ODBC data sources, the pop-up dialog box (Figure 5-14), here to select a pre-configured ODBC data source.

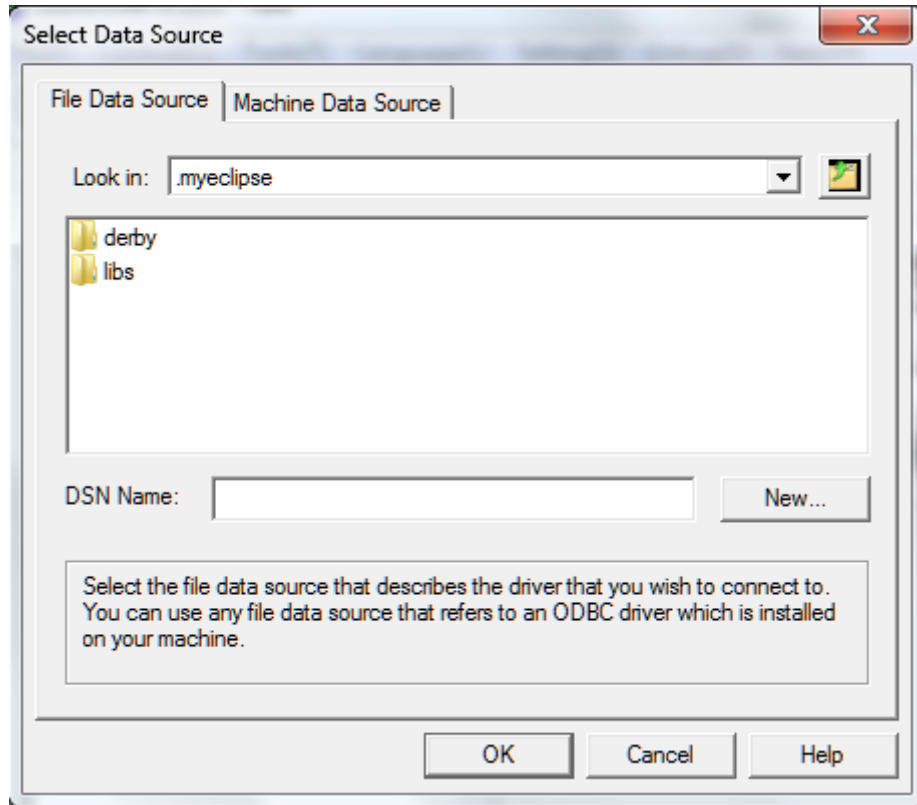


Figure 5-14 Adding ODBC database file

If you use SQL Server database, the pop-up dialog box (Figure 5-15), where the IP address entered into the database, the database name and user name, password. Set after the click "OK" to the database can be extracted and edited the database tables.

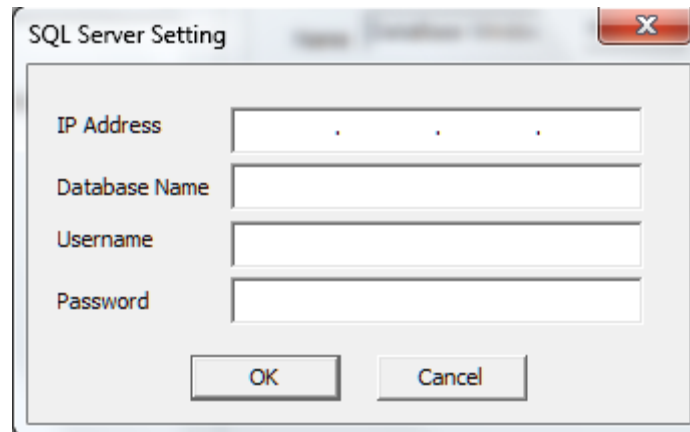


Figure 5-15 Add a SQL Server database

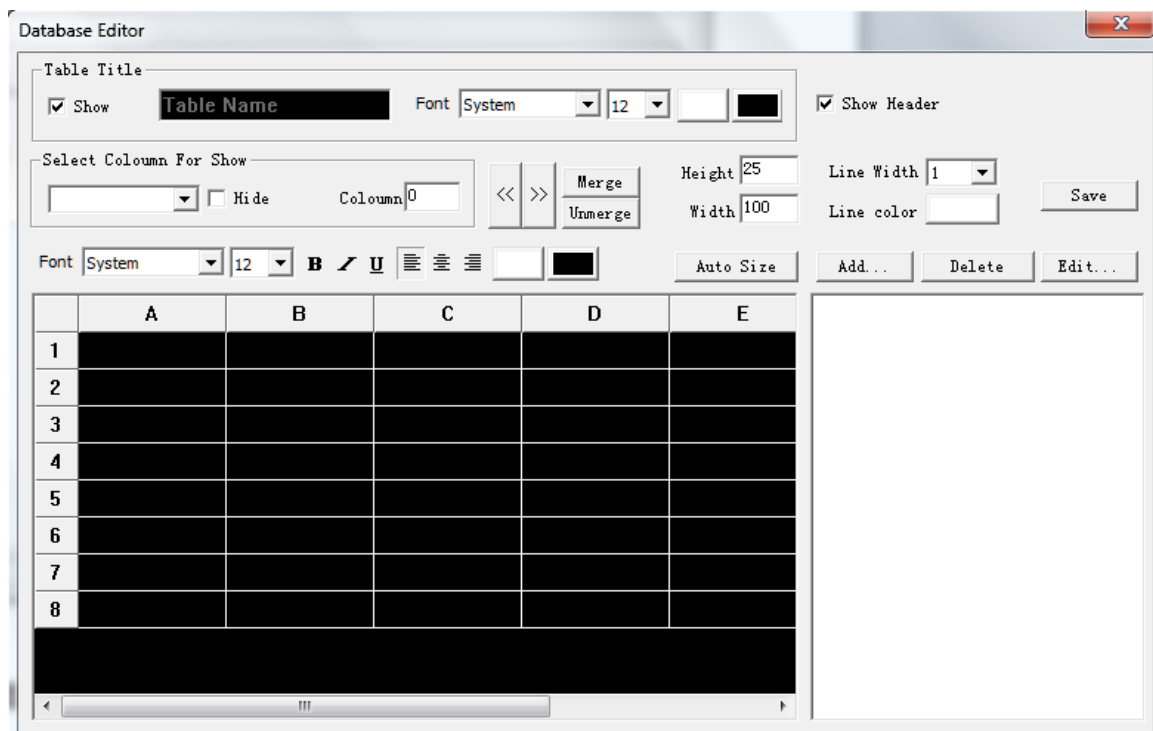


Figure 5-16 Database edit box

Here is a database editing interface features a variety of operating instructions:

- **Hide:** Do not show hidden items, hidden columns in the select part of the play in the recovery

- **Merge:** Merge adjacent cells, showed the front part of the combined data.

- **Split:** Split has been merged cells.

- **Display the header/table name:** Display database header / table name , Remove the hook is not shown.

- **line spacing / line spacing:** Select the cells you want to adjust, Modify the line spacing or column spacing value.

- **Add Table:** Create a new database table.

- **Edit table:** Content of the database for a selected display. *Specific use, please consult the database and coding the provider of the technical staff.*

After editing the file can be saved as dbs, Display (Figure 5-17)。

Number	NAME	AGE
118	sali	25
125	ruben	27
135	kolly	28
150	billy	29
165	niyki	25
173	makcle	27
182	jake	29

Figure 5-17 Database renderings

2. the database properties

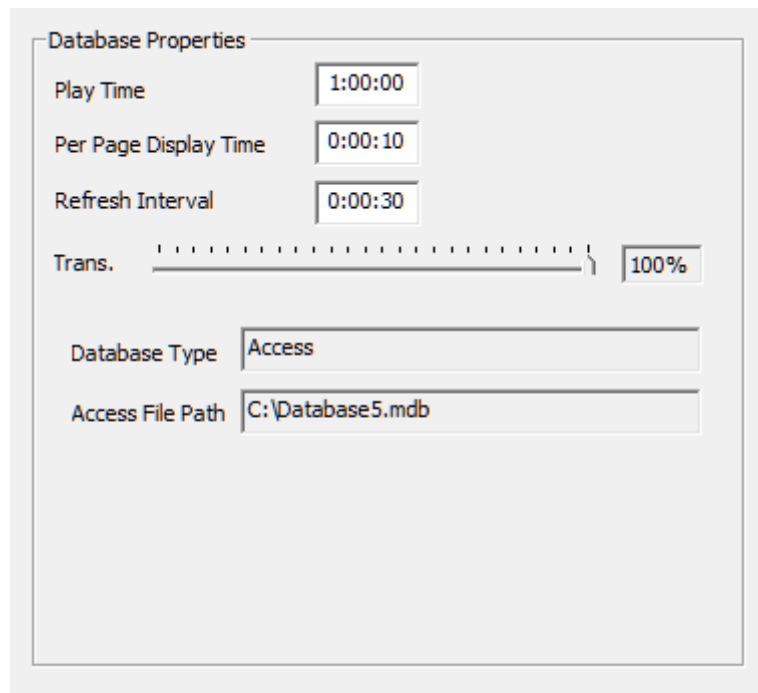


Figure 5-18 Database Properties

- The total playing time: The database forms the total time played;
- Page display time: Multiple page database table, the page switching time;
- Data source refresh interval: The time interval to re-read the data, so data synchronized with the database content;
- Transparency: Database table page displays the transparency

VI. Clock

1. the clock display

The clock in the style of the clock attribute can choose analog clock and digital clock in the clock display. In the clock attribute can also set the time difference ahead of time difference or lag;

1.1、 Analog clock display

Analog clock display, you can set the clock in the shape, the pointer shape and color, shape and color of the clock tick, you can set the text to be displayed on the clock, and the text font color (Figure 5-19).

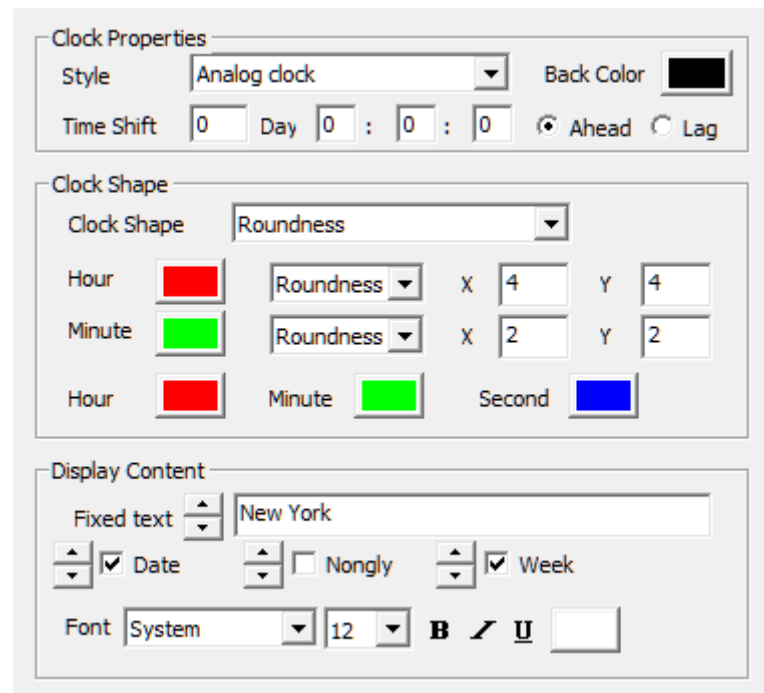
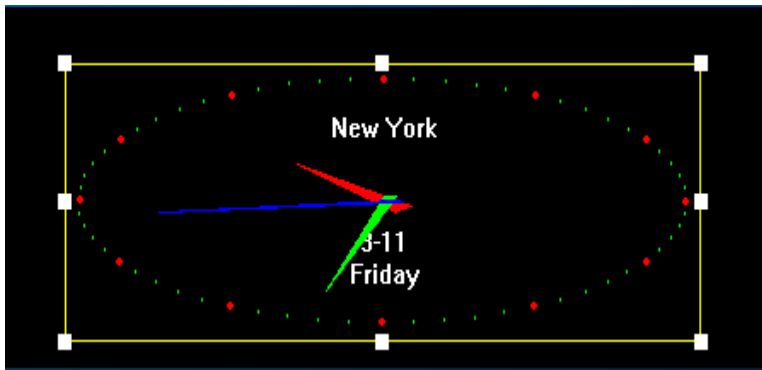


Figure 5-19 Analog Clock Effect

1.2, Digital clock display

Figure 5–20 is the effect of setting the digital clock. You can set the font, fixed text, hours style, year, style, multi-line and single line display. There are three kinds of style digital clock can be selected.

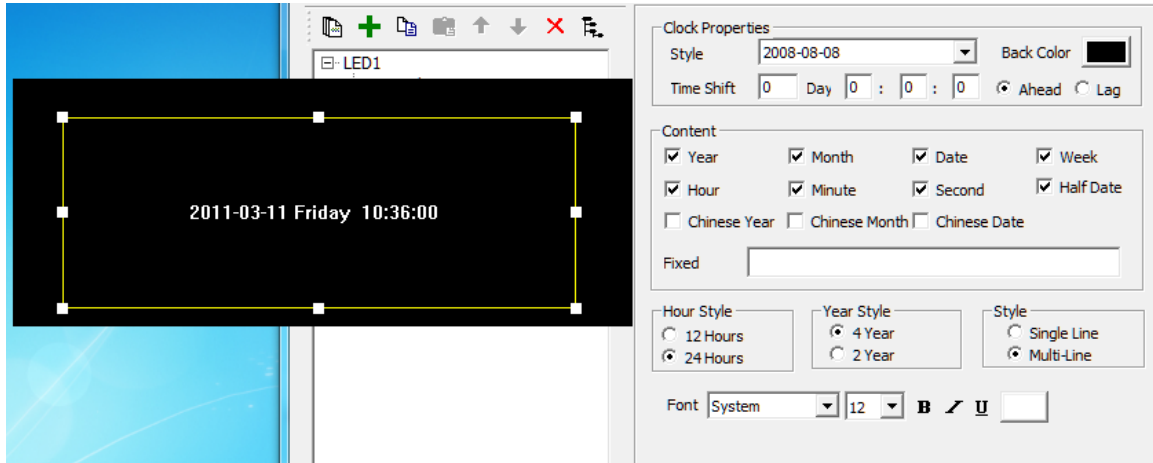


Figure 5-20 Digital Clock Effect

2. The timer display

Figure 5-21 is a timing property. You can set a fixed text, font effects, size, bold, italic, underline, color, style; arrival date and time of arrival; whether to display the number of days, hours, minutes, seconds, more than one line and so on.

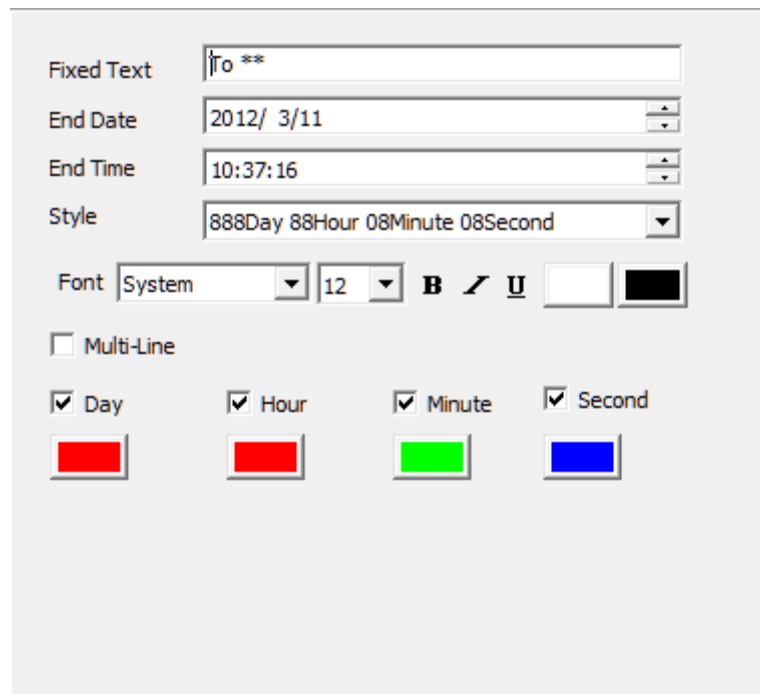


Figure 5-21 Timing Properties

-
- **Countdown:** When the set date and time arrives for the future, the software calculated the time from now to set the countdown. Display (Figure 5-22)。

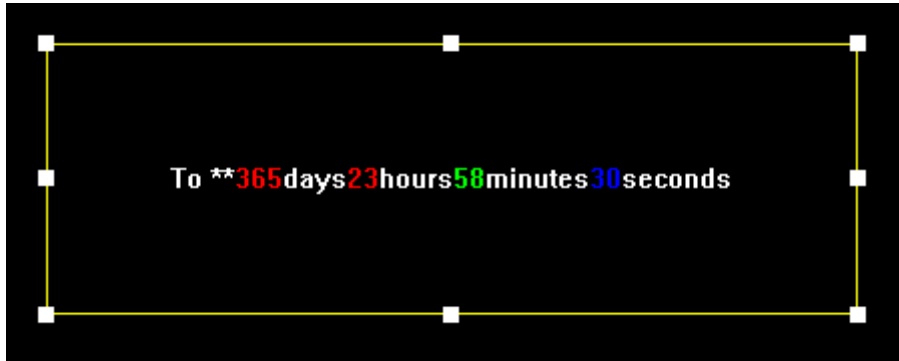


Figure 5-22 Effect Picture Countdown

- **Is timing:** When the set date and time is already past time, the software calculated the time from setting to the present time is it. Display (Figure 5-23)

。

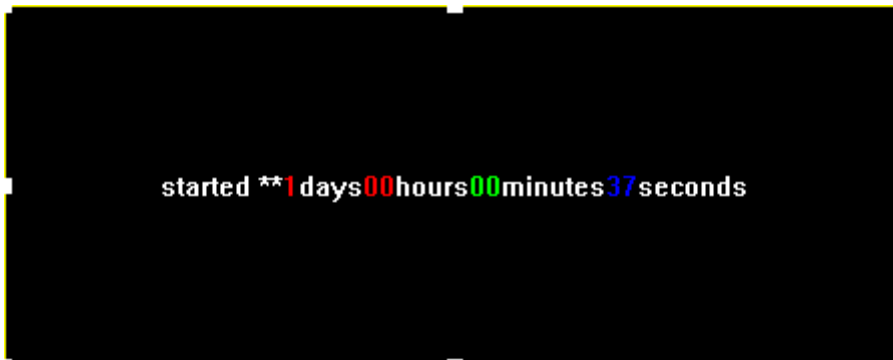


Figure 5-23 is time rendering

VII. Weather

Figure 5-24 is the weather forecast attributes. Enter city name to query (major cities at home and abroad), and then click Query, the system will automatically check the weather forecast for the day in the city, and

display (requires computer connection Internet), users can choose content to display. You can set a fixed text, the text font size color style.

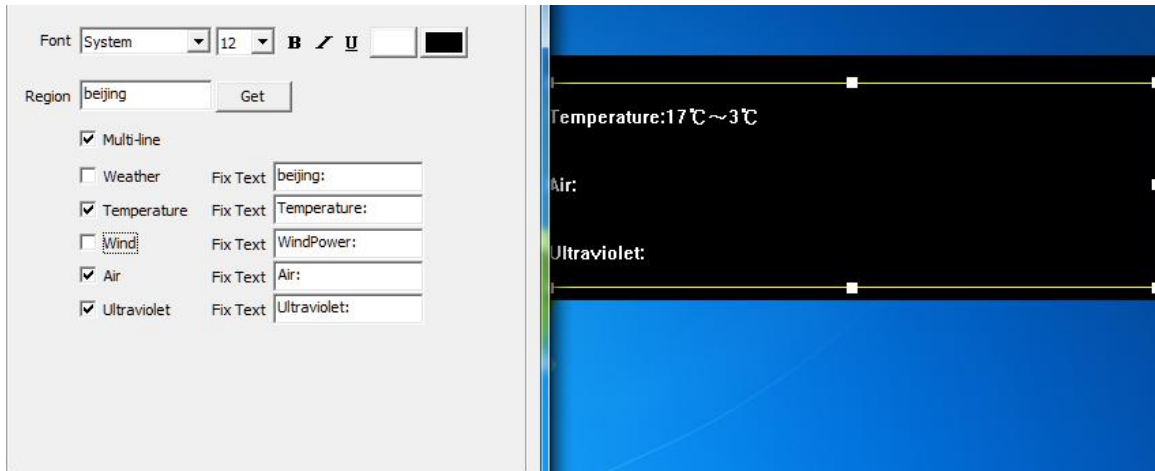


Figure 5-24 Weather effects and properties

Eight, external video player

1. install an external video device

For the camera, TV, VCR and other external video device, the user can use the external video window display. First need to install an external video capture devices, including hardware connection and driver installation. General purchase comes with an external video device instructions, refer to the instructions provided by the manufacturer for installation and debugging. The most commonly used device is a TV video capture cards, TV cards usually have the following interfaces: AV, SV, TV, can play these types of interfaces through the video output device context. TV cards on the market today is divided into two kinds of PCI interface and USB interfaces, the use of two interface modes, respectively, and by connecting to the computer. In our actual testing, PCI TV card display interface is generally superior to USB interface, PCI interface

recommended for TV cards, such as the master of 3-day min TV, TV Master 4 and so on.

2. Add external video program

Select the "external video window ", click the right mouse button, select Add External video. Add external video, the system will automatically add an external video display, and automatically finds all connected to the computer external video, and then list them (Figure 5-25)。




Figure 5-25 External Video Properties

- Video input device: Select video capture device;
- sound input device: Select the sound collection devices;
- Video Source Selection: used to select the video source signal type;
- TV Tuning: When the video signal source selection for TV stations;

VIII. PowerPoint, Word, Excel

Software Support PowerPoint, Word, Excel documents play three。

Create a new "file window ". Right click "file window " or click the

button , Pop-up menu and click "Add PowerPoint ", "Add Word ", "Add Excel " that can play these files.

1. PowerPoint Play

2. Word Play

Display can be done on anti-color processing; Zoom to adapt the window, Fill the entire page within the region and to retain the original borders Word.

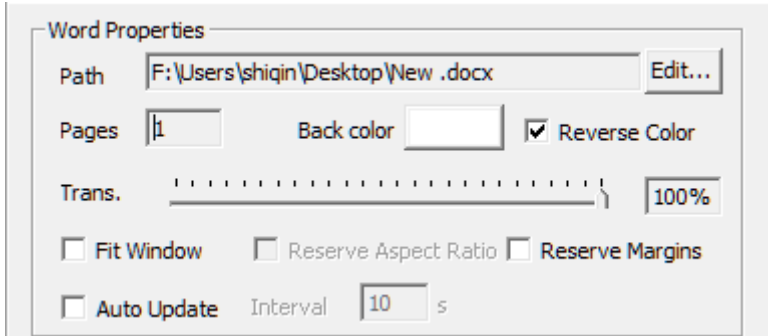


Figure 5-26 Word program properties

3. Excel Play

You can set the number of lines per page, to change the display (Figure 5-28) .

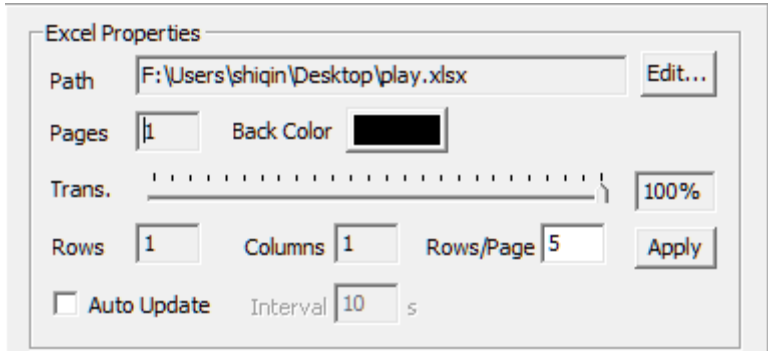



Figure 5-27 Excel program properties

IX. Flash, Gif

Right click "file window " or click the button , pop-up menu and click "Add Flash ", "Add Gif " that can play these files.

1. Flash Player

Can adjust the playback duration. Set display mode to full, no borders, show all, do not zoom effects.

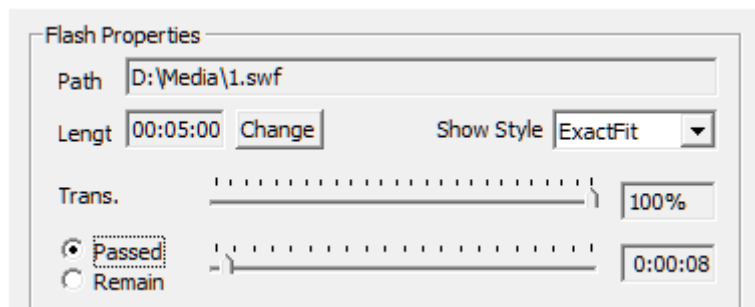


Figure 5-28 FLash show properties

2. Gif Player

Gif Flash Player Play Reference

Chapter VI Notifications and Sports Scores

I. Notifications

Notification is a special program outside the single line of text, it is independent of the program on the display. Mainly used for emergency and temporary play important events. Click on the main menu "screen management" → "Play notice." Access to inform the management interface (Figure 6-1).

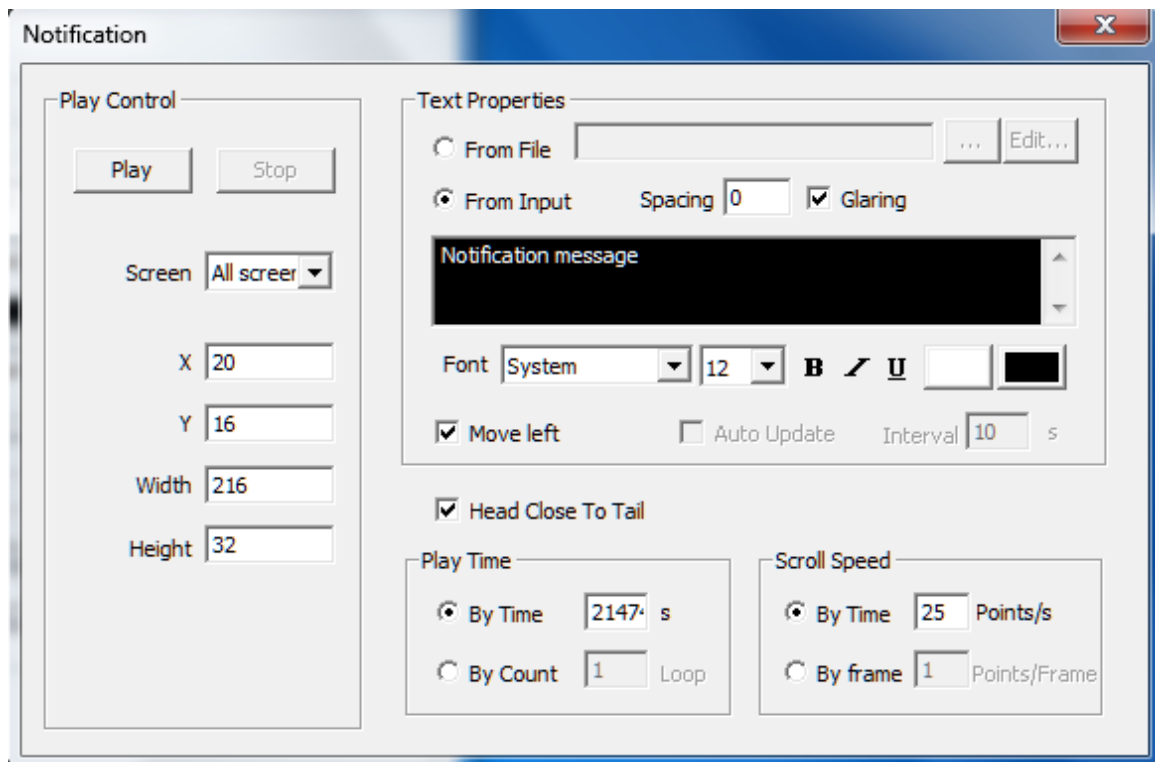


Figure 6-1 Notification Manager

Play the content of the notice text editor see Chapter player playing in the single line of text, effects settings see chapter pictures.

II. Sports Scores

Programs other than sports scores also show a special project, which to a separate page to display, mainly used in various sports competitions。 Click on the main menu "screen management"→"sports scores. " Access to sports scores management interface (Figure 6-2)。

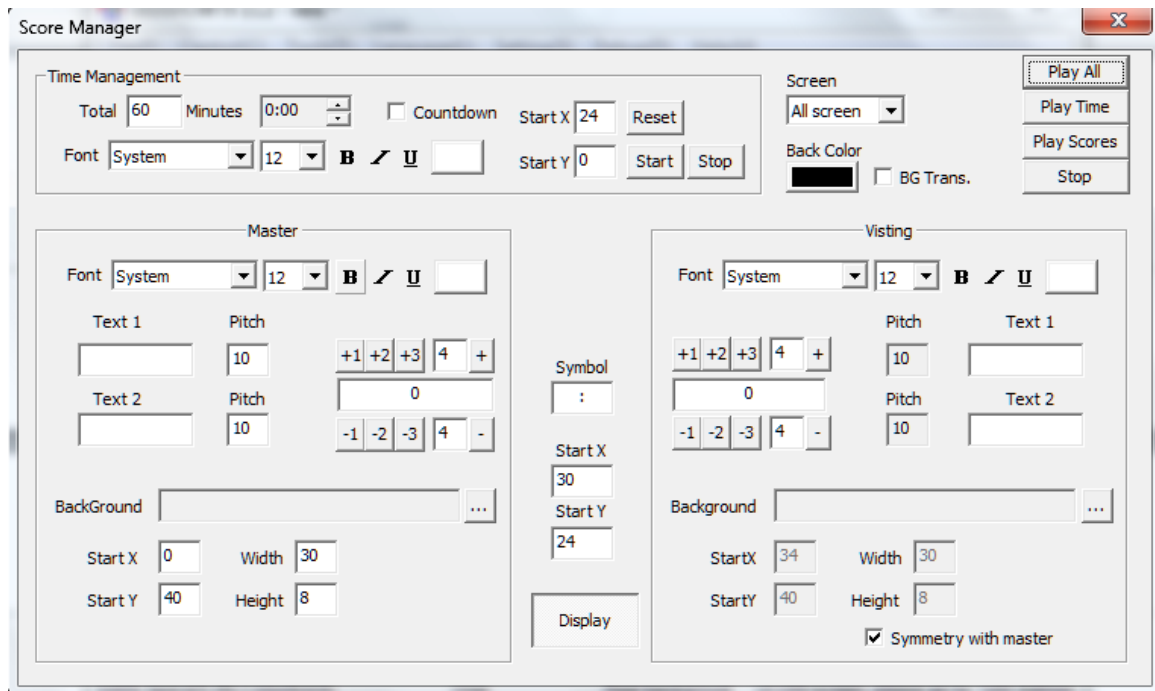


Figure 6-2 Score Manager

Which can be individually play time and score. Time management is used to set the game time, divided into positive and countdown timer; background image can be displayed on behalf of two iconic images. Sample results showed (see Figure 6-3)。



Figure 6-3 Score Manager

Chapter VII Timing Play and Command

I. Timing Play

Broadcast for program management and management of play, by giving each program file, set the corresponding broadcast time period, to generate a single control of the broadcast program, to pre-arrange a program, the purpose of maintenance manpower savings.

Click on the menu "screen management" → "broadcast management ", enter the Program Management window (Figure 7-1)。

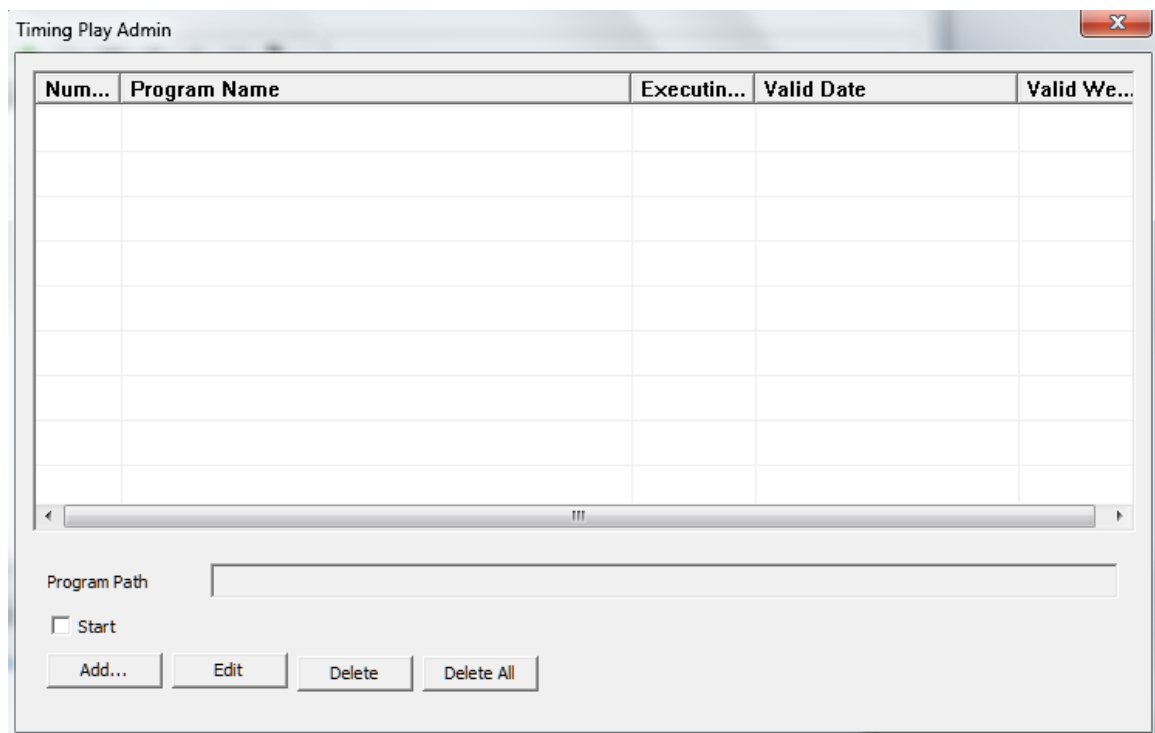


Figure 7-1 Program Management window

Add a program item, set the broadcast time and the cycle (Figure 7-2).

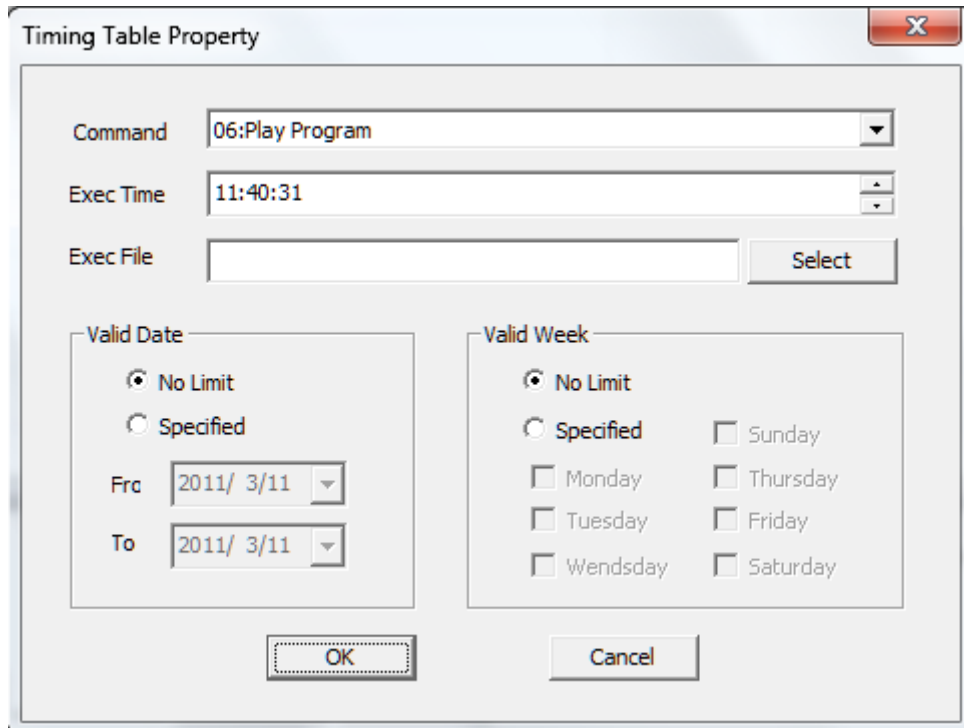


Figure 7-2 Single-editing program to add

Add a program from each to form a single program. Start time playing, quit then the software automatically save the program list (Figure 7-3).

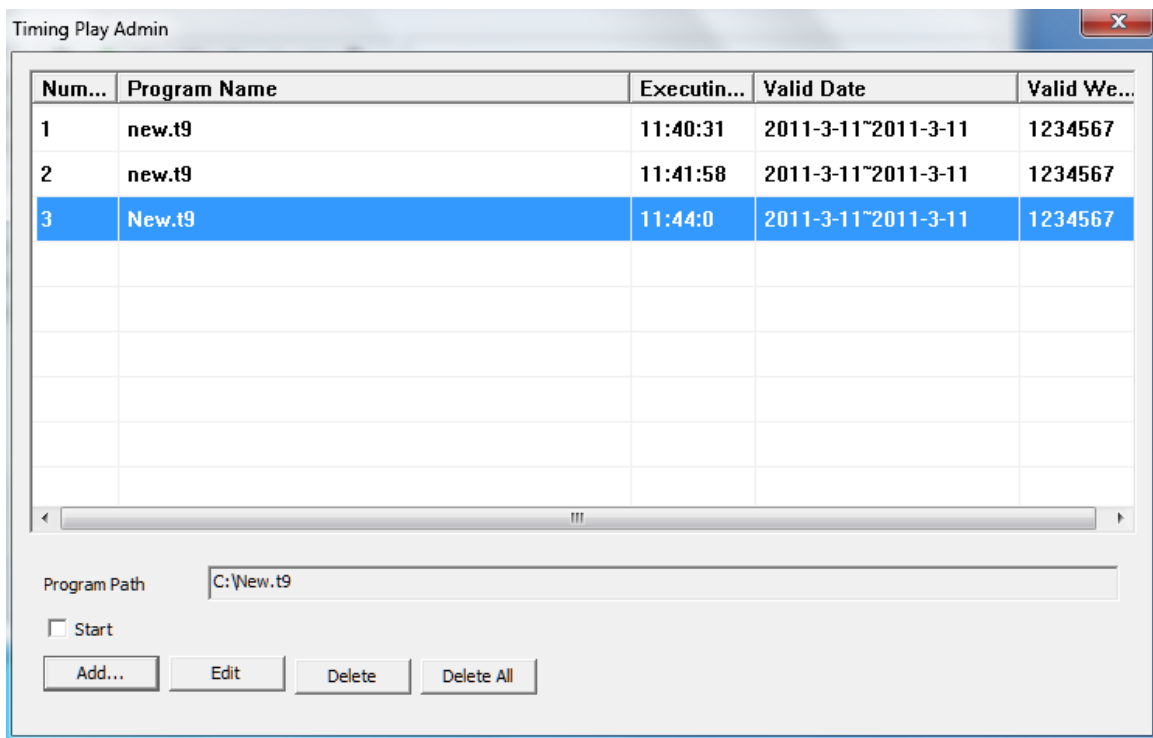


Figure 7-3 shows a list of management

II. Timing Command

Timing control by the control system for peripheral devices, the part of the operations need to configure the appropriate hardware devices, users, please follow the guidance of professional and technical personnel.

Click on the menu "screen management" → "schedule table" into the schedule table window (Figure 7-4).

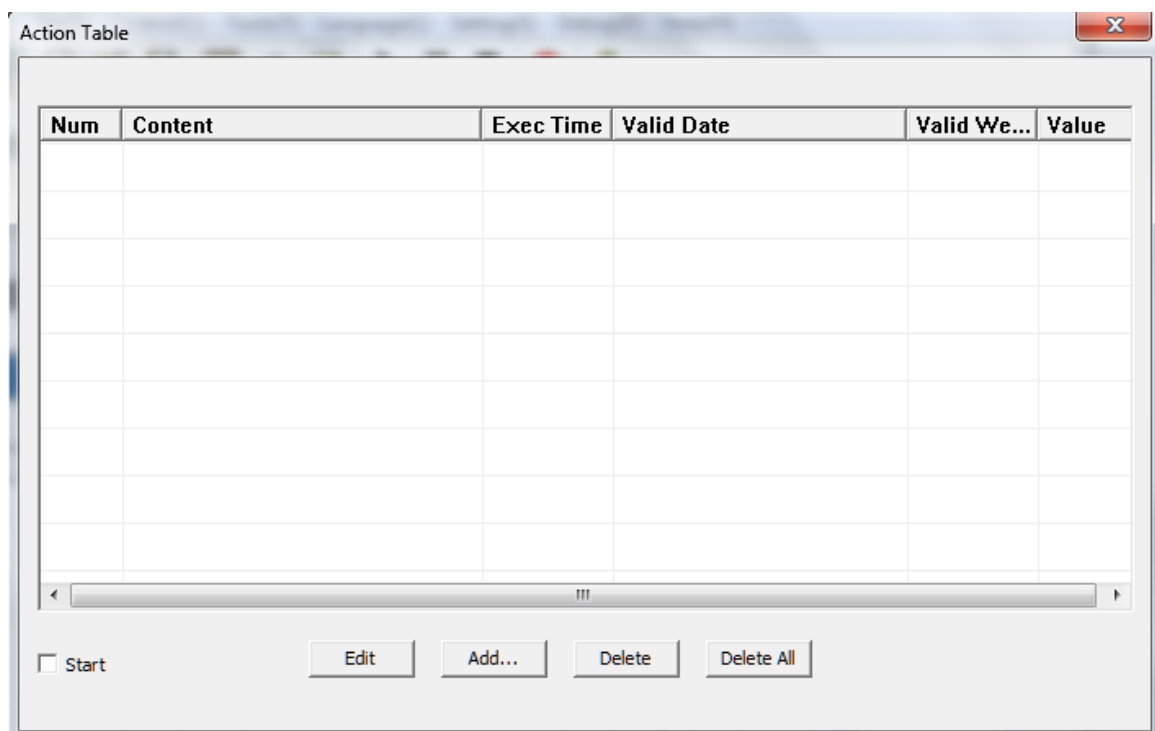


Figure 7-4 schedule table

Add a directive to set the instruction execution time (Figure 7-5).

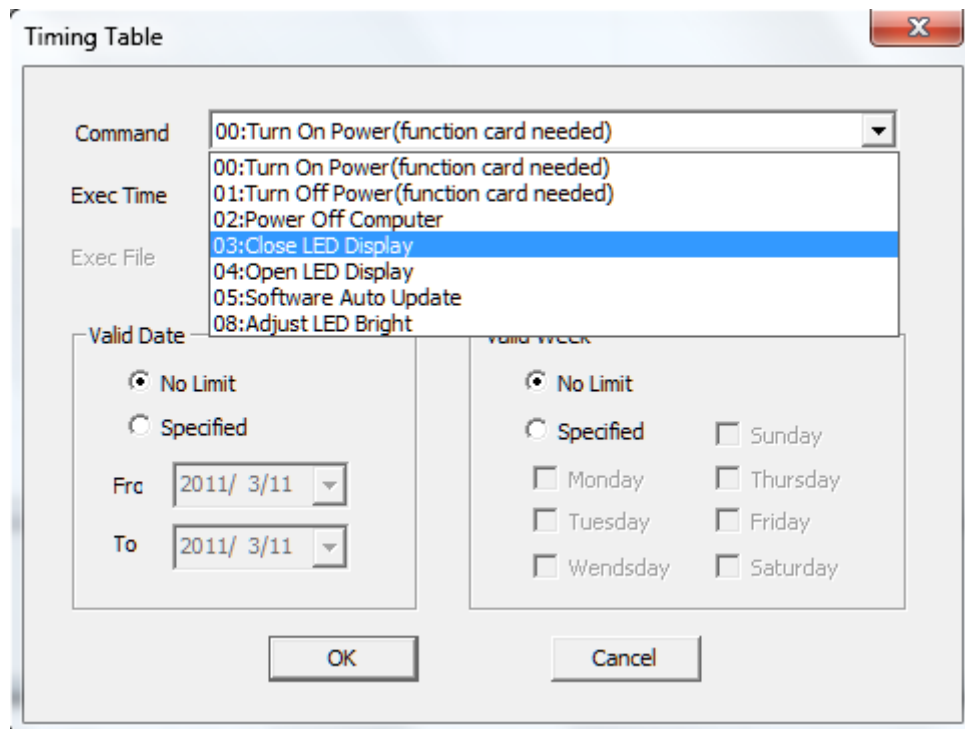


Figure 7-5 to set the schedule table

- **Command:** operating functions to be completed soon.
- **On / Off power the big screen (requires function card) :** system timing issue control instructions to turn off power supply equipment, large screen, big screen power off.
- **Turn off the computer :** system timing issue control instructions to turn off the computer (this command applies only to support a personal computer to automatically start or turn on the computer situation, your computer unattended with caution).
- **close / open LED display:** time off (or open) the display content is displayed.
- **Restart the computer:** Restart the computer time.
- **To adjust the display brightness:** In accordance with the time to adjust the display brightness.

-
- **execution time:** command a specific time, the time when the format xx xx minutes xx seconds for 24 hours. In setting the effective date and the effective implementation of the command constraints week.
 - **executable file:** According to the orders need to set the relevant documents required.

Note: This part of the function must match the related hardware, related project documents, please contact our technical staff on request.

Chapter VIII A8 Content Management

A8 synchronous asynchronous dual card is the perfect combination of two modes, he can be online simultaneously, can also be asynchronous offline use. Simultaneous use of time, if the network line break or a computer failure, the real-time switch to the offline content, thus ensuring uninterrupted playback screen。

I. The parameter settings

If you need to disconnect from the network to automatically play offline content, you need to make the following settings: Click Control → screen → screen configuration management screen, select the parameters in the "no signal the host computer display " item, choose the "Play Offline Content ", and save changes, sent to accept the card (Figure 8-1)。

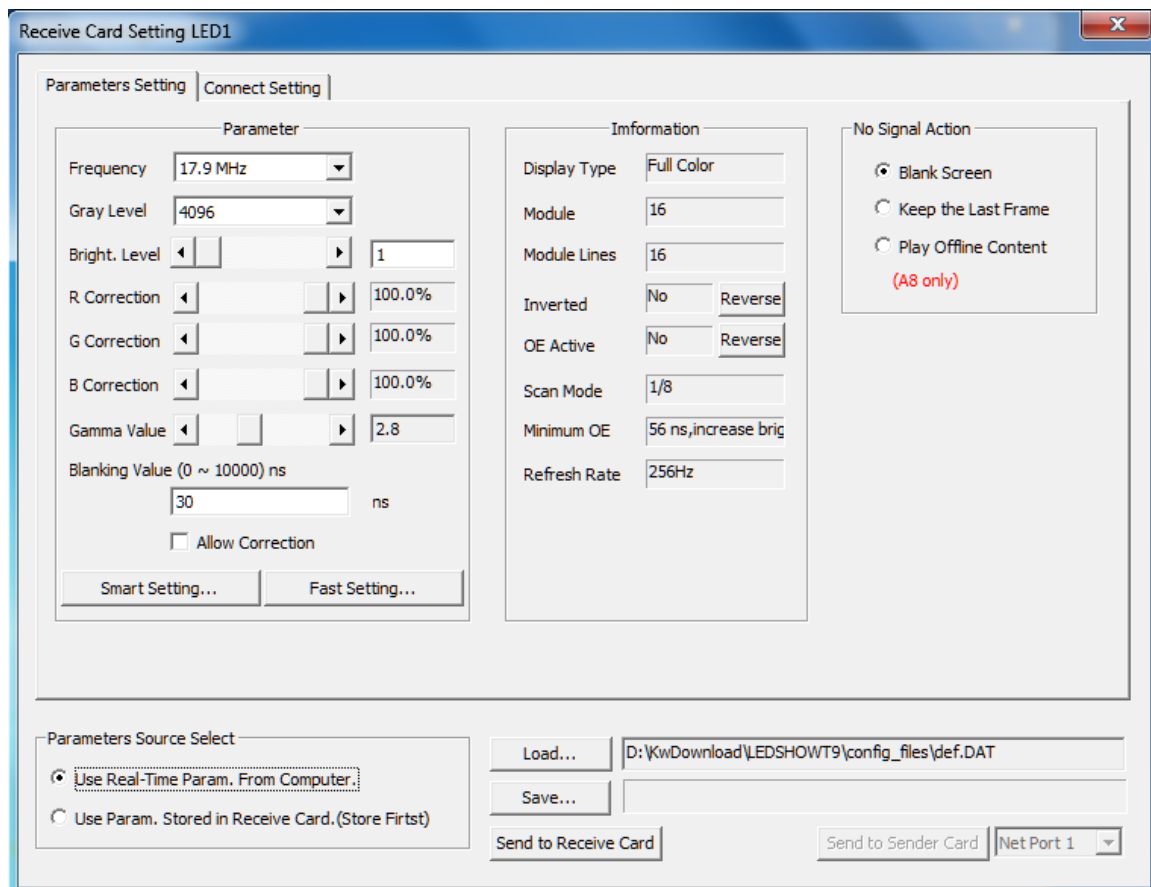


Figure 8-1

II. Send a picture to the video receiver card

In the online mode, click on the control screen → send video images (Figure 8-2).

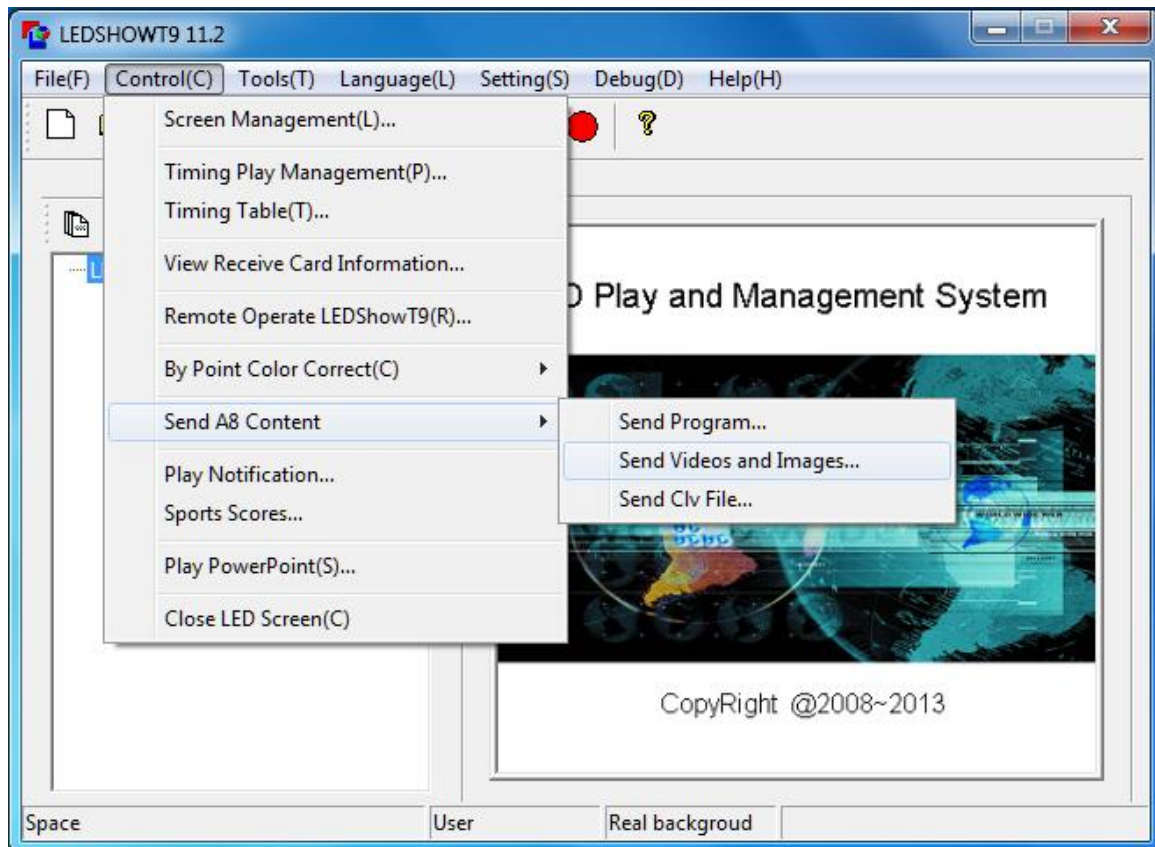



Figure 8-2 to send the video image

Pop-up dialog box to send video pictures, Click  Add video, image files. These adjustable file playback orders, delete, save and so on. (Figure 8-3)。

- **Total picture can be broadcast:** Area at the current load, the receiver memory card can store a total number of images.
- **Number of existing image:** Has been sent to the receiver the number of images on the card.
- **Shows the total time:** Sent the pictures, the time to play.
- **transmission speed choice:** Optional 5 speed, low-speed transmission works best。

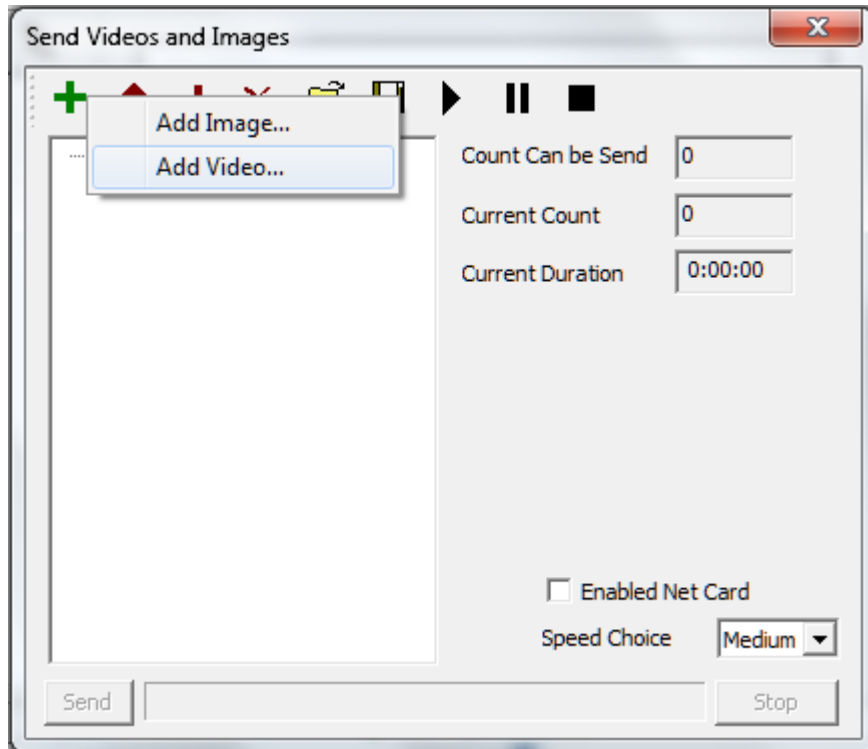


Figure 8-3 Add video pictures

Add video files, the software will automatically convert video files into a picture, click on the video file, the file appears on the right path into the picture number, length of play, you can also select the start time and end time, the interception of videos Upload play a part (see Figure 8-4)。

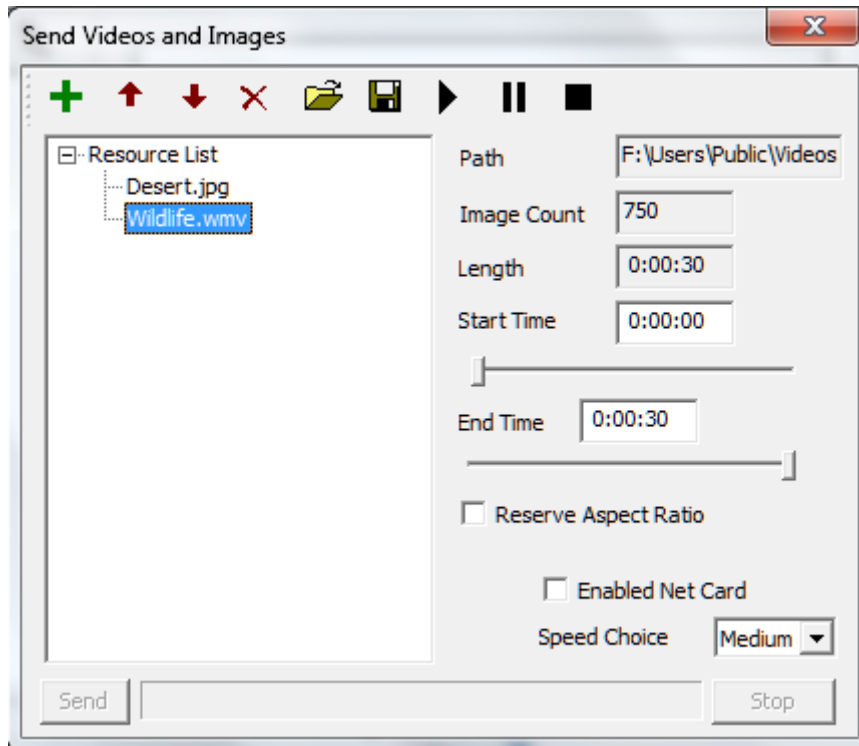


Figure 8-4 Video Properties

Add a picture file, the right will display the full file path. Pictures of the playing time can be adjusted.

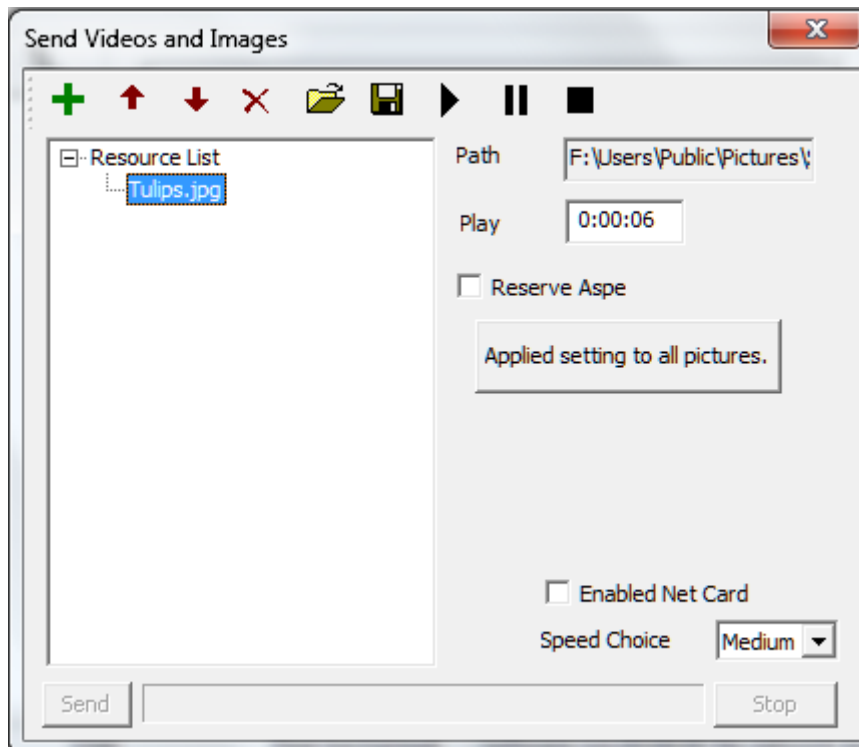



Figure 8-5 Picture Properties

Add a good file, click "Send", you can send video images to the receiving card. Each time you send, to receive the card will be prompted to erase the original contents.

III. Send the program file to the receiving card

First of all, good editing program to play. Control of the screen and click send programs or →  Shortcut buttons, Send pop-up programs dialog box, click Send. As shown in Figure 8-6.

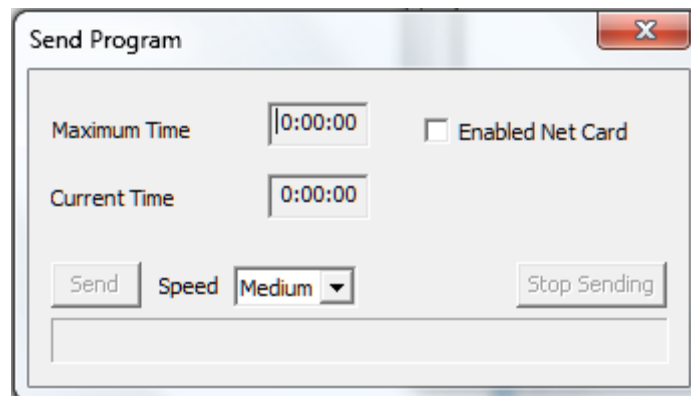
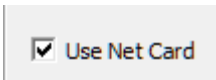


Figure 8-6 shows sent

- **Maximum recording time programs :** Receiving card can store up to show time. And receiving cards and hardware control area the size of memory chips. Receiver card control area is larger, shorter programs can be recorded, whereas the longer recording program. Hardware support for memory chips to 32Gbit 2Gbit.
- **program time:** The current time to send the program.

Send pictures or videos after the show finished, unplug the network cable, turn off the software or deactivate card  Use Net Card , Display will switch to offline content.

Chapter IX Power and brightness control

LEDSHOWT9 software control through the control card, big screen, including the big screen power supply, air conditioning, power supply, fan power supply, speaker power supplies. Can also be functional by installing sensors on the card, by the screen temperature, brightness and other information.

I. The power control

Click on the main menu "Settings" → "Remote Control ", enter the remote control window (Figure 9-1).

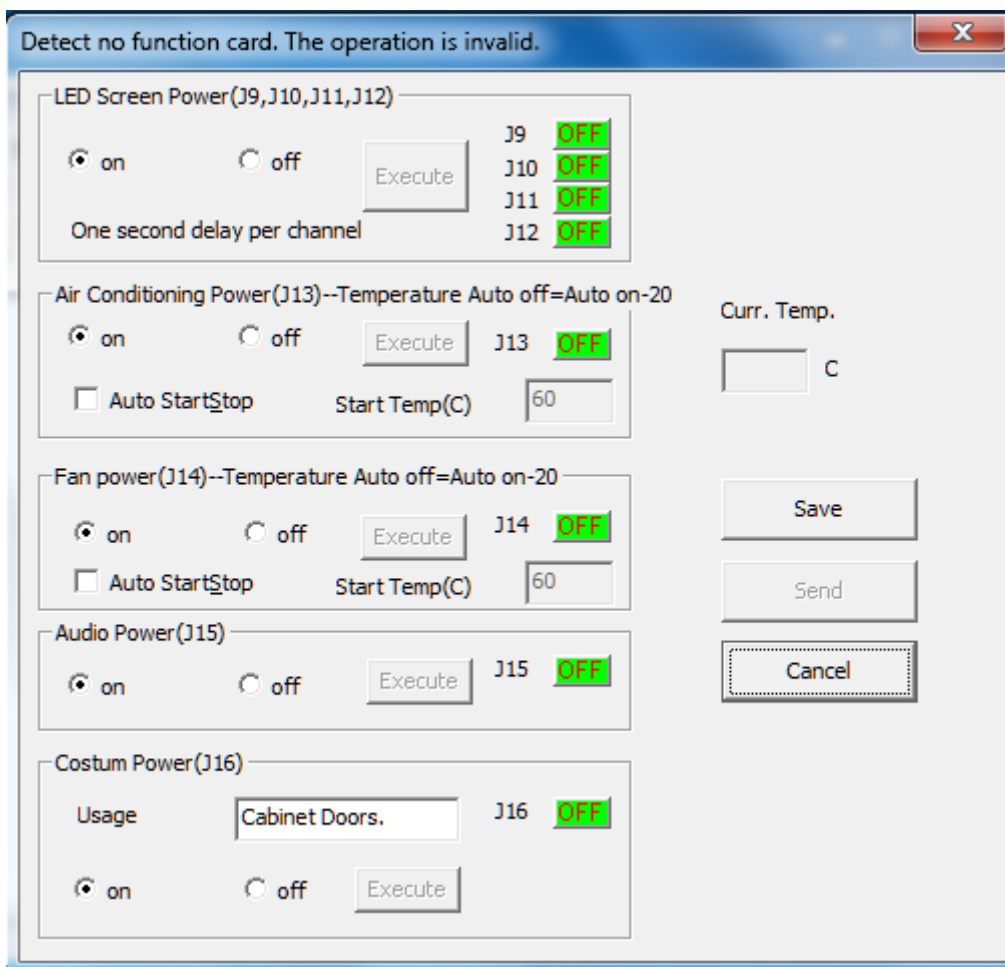


Figure 9-1 Remote Control Window

Selection function corresponding to the power control card trigger, select the switch status is "start " or "closed ", click on the implementation, which can achieve the appropriate switching action. These settings can also be a button "Send To feature to open" card sent to the function.

II. The brightness adjustment

Click on the main menu "Settings"→"Brightness", into the brightness adjustment window (Figure 9-2).

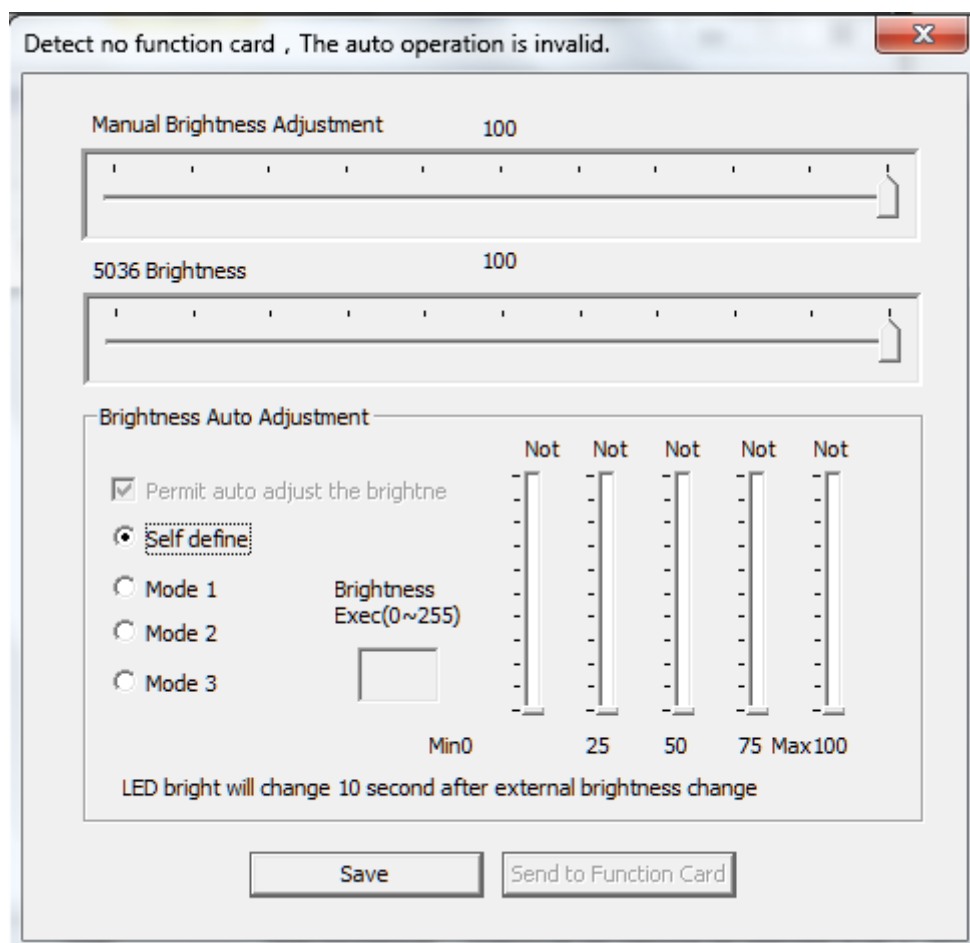


Figure 9-2 Remote Control Window

Here you can manually adjust brightness, 5036 brightness adjustment. You can also feature automatic brightness adjustment card. Apart from having to choose a particular brightness adjustment mode, you can also customize a brightness adjustment mode, this

setting will be sent to the function card, the function card can be adjusted by setting and automatically controlling the brightness of LED large screen.

Chapter X Remote operation

If you want to be controlled remotely via LAN, you must take control of the host computer LED display set to remote control servers and other computers for remote operation as a client. Network remote control server can be computer controlled all customers within the client within the network can control all remote control server.

I. Set the remote control server

Click on the menu "Settings" → "Software Settings ", enter the software settings window (Figure 11-1).

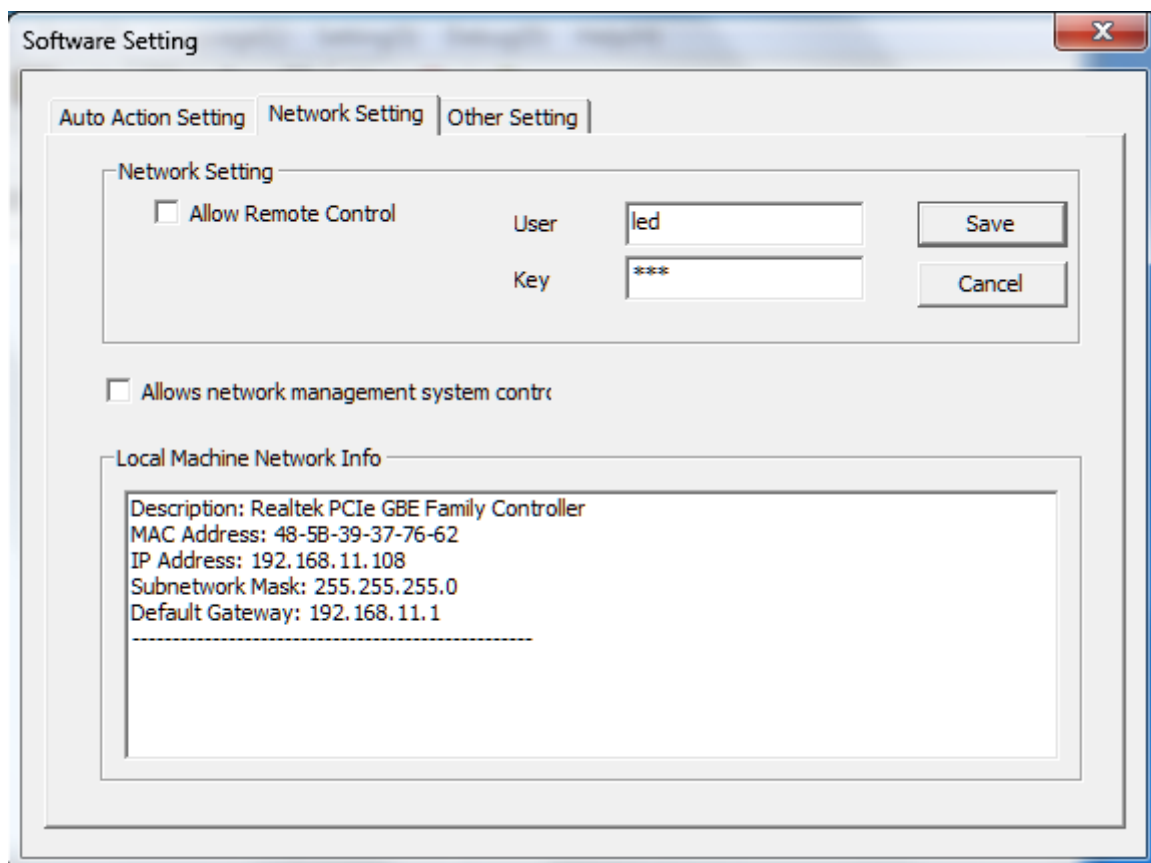


Figure 11-1 Setting the remote control server interface

- **User Name / Password:** Remote control to enter the user name and password before they can connect to the Server.
- **Allow remote control:** The only election in when the computer is allowed to be remote control, a remote control server.

Second, The client remote control LED display

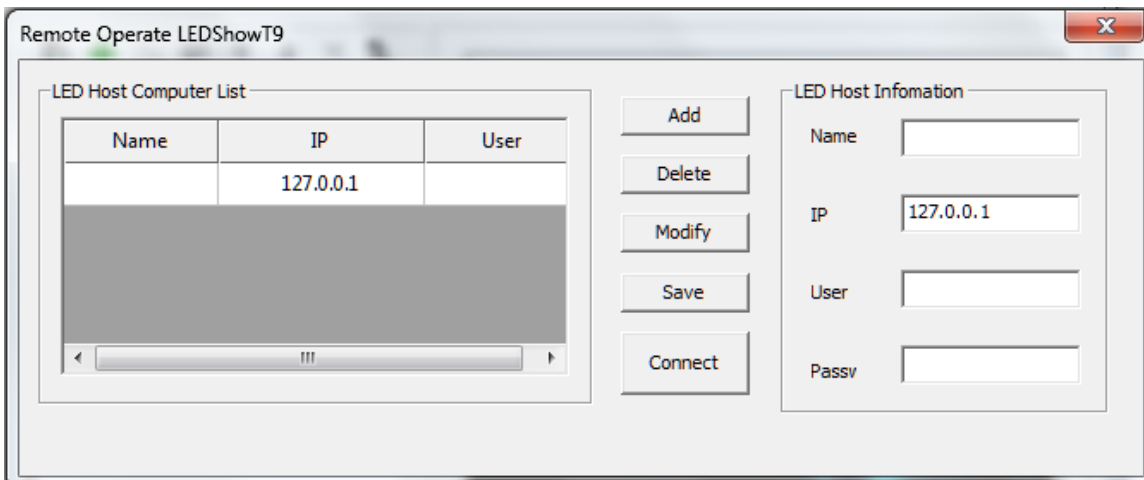


Figure 11-2 Remote control and management interface

1. Add the server to manage the display of relevant information.

- **Name:** Used to manage the side distinguish the name of the display can be set free.
- **IP address:** To manage the remote server's IP address display.
- **User Name:** To manage the remote server to set the user name.
- **Password:** To manage the remote server to set the password screen.

One IP address, port, user name, enter the correct password must all be connected to the remote display server.

2. The second step, to control the display, click "Connect".

At this point, the display screen to automatically connect to a remote server, authentication is successful, log on to the remote server, open the appropriate remote interface.

3. In the pop-up in the remote operation control interface display. One mode of operation and the local operation the same as using LEDSHOWT9.

Chapter XI Software settings

The set of software-related, including the automatic settings, network settings, other settings three tabs. Which the network settings for remote operation, related presentations, please refer to Chapter XIX.

First, automatic settings

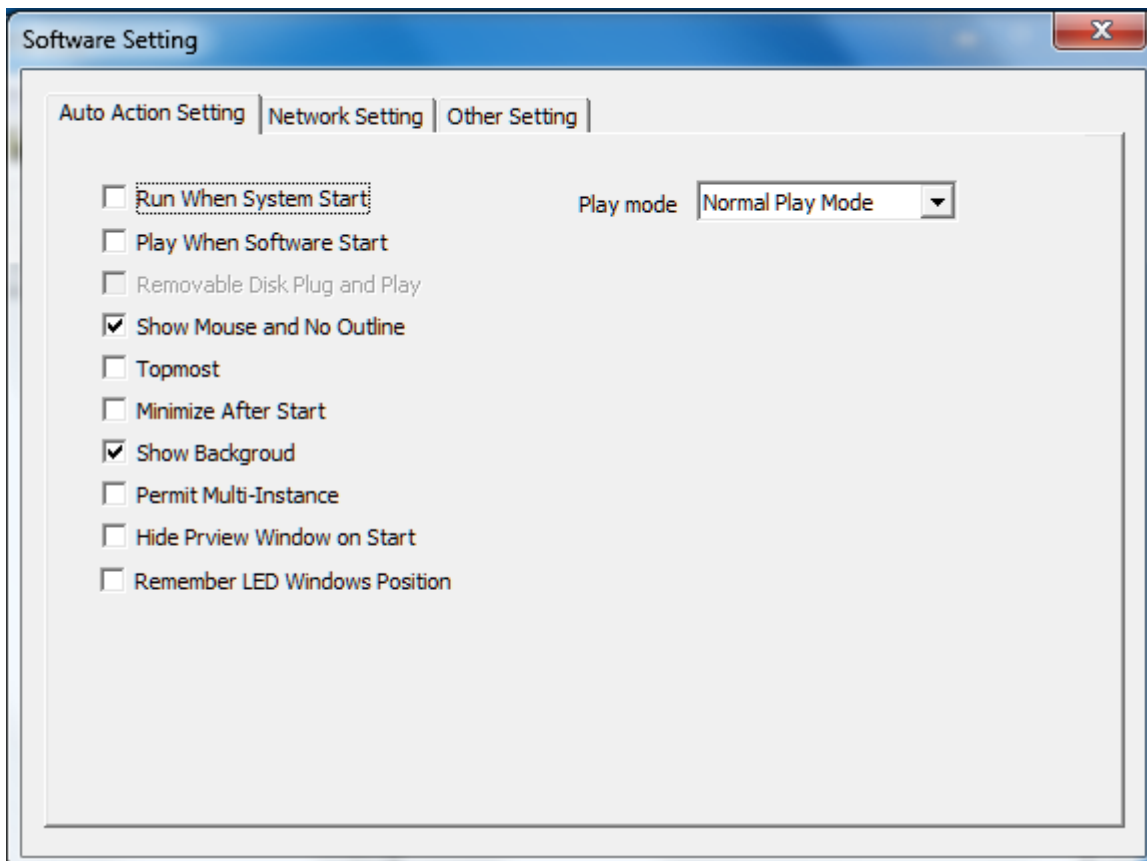


Figure 12-1 is automatically set

- **start windows software automatically starts:** Start windows system, the software automatically.
- **broadcast programs start automatically when:** Software starts automatically after the last player to open the program.
- **Show the mouse and the border:** Editing program, whether to display the preview frame and mouse.

-
- **Playback window always on top:** When checked, allows playback window on top of other windows.
 - **Minimized immediately after the software starts:** Software startup, the operating window is automatically minimized.
 - **Show wallpaper:** In the absence of editing program, shows three-color ball wallpaper, or black background.
 - **Show wallpaper:** "Hide / Show" broadcast window.
 - **Hide the playback window when starting:** After starting the software, hide player window to the background.
 - **Remember window position play:** Wallpaper every time you start the software the location .
 - **Play mode:** Divided into normal mode (Play LED window contents), screen capture mode (with the "Hide / Show" shortcut button, LED window position play computer desktop content) and side grab and broadcasting mode (Play LED windows and a combination of desktop content).

II. Other settings

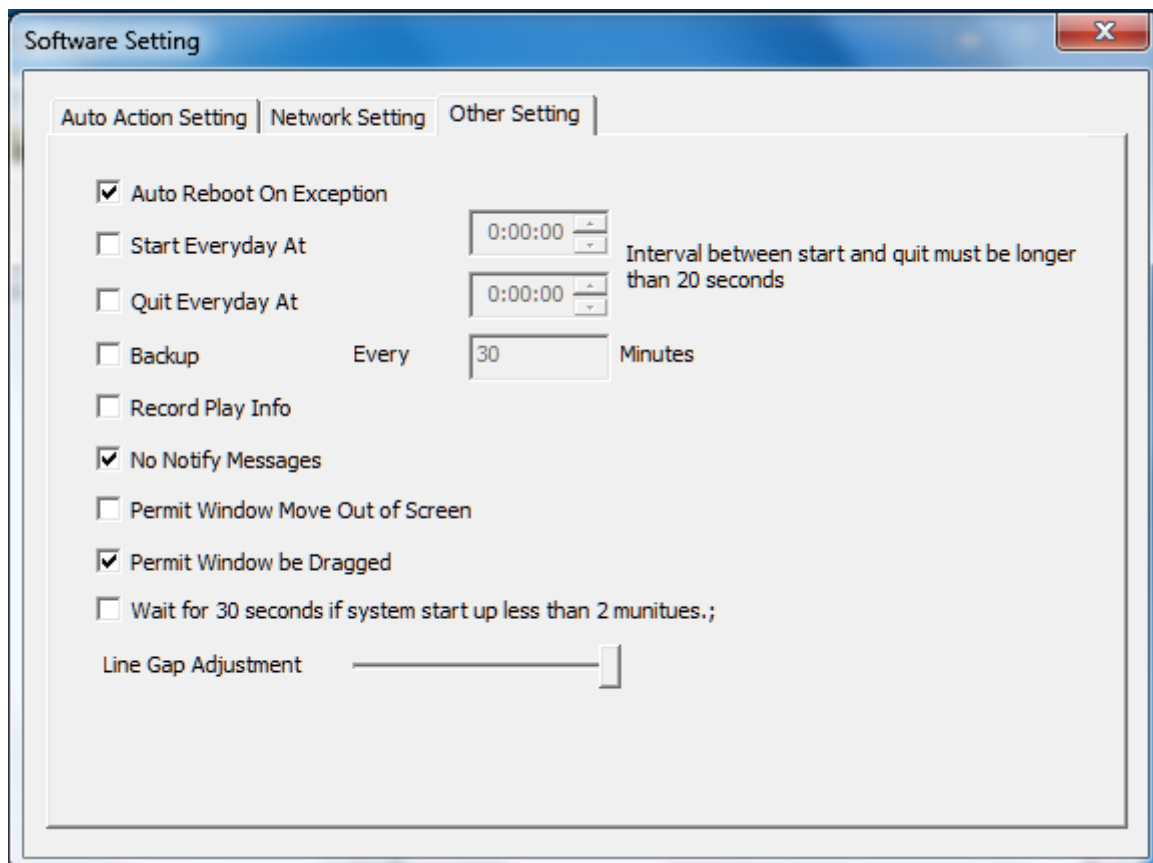


Figure 12-2 other settings

- **Restart automatically when the software failure:** Failure of the software will automatically restart after exit.
- **Start time every day \ turn off the software:** Set time to start \ shut down the software.
- **Backup program from time to time:** Regular backup program.
- **Recording and playback time:** Record the time to play the file, save it to the appropriate files in the installation directory.
- **Error allowed:** Play the file does not pop up an error dialog when an error occurs.
- **Allow the window outside the screen:** Allow the program beyond the background of the window frame border.

-
- **Allows the window to drag:** Background allows the mouse to drag the window.
 - **line gap adjustment:** Data transmission process, the time between the data before and after the adjustment. When the screen width than the
 - **Large, lower line clearance;** when the width of the screen is small, the increase in the line space, the tail appears to avoid screen

Chapter XII User Management

User management is mainly used to create administrator and ordinary users to assign different permissions. Click on the menu "Settings" → "User Management ", enter the User Management window (Figure 13-1).

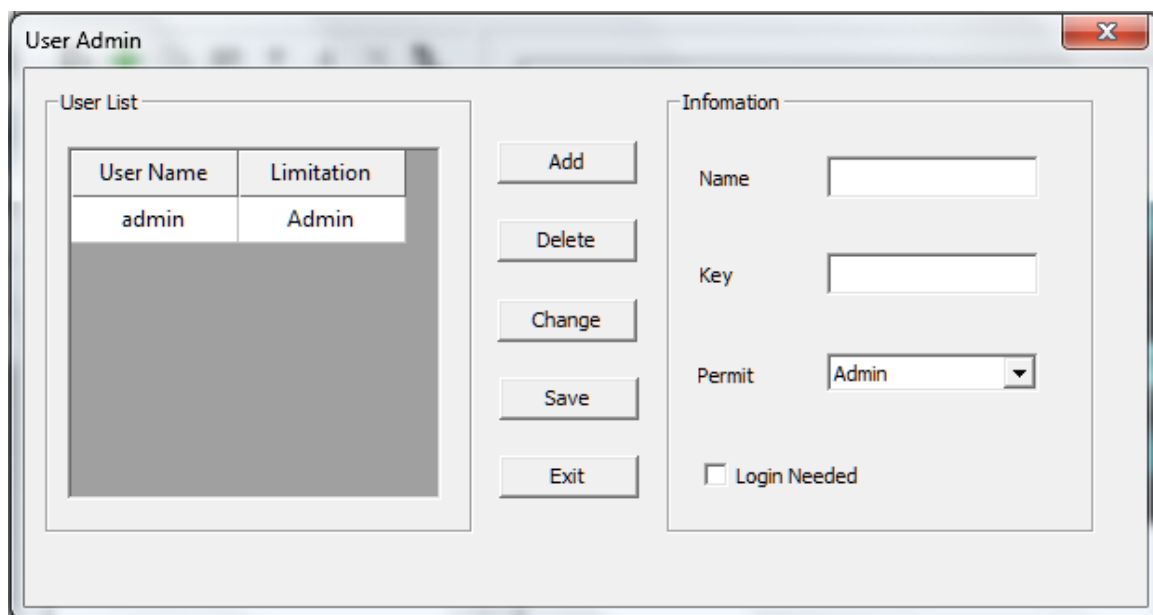


Figure 13-1 other settings

First, the user information

Name / Password: The user to log into the software the user name and password.

Second, the authority

- **Manager:** All operations can be, you can set permissions for the user and the corresponding .
- **Ordinary users:** Play can be displayed, as all the operations, can not set hardware parameters for the display and user management.
- **limited user:** Can only load programs and play has been good.

-
- **Software need to log in:** Open the software requires a user login.

Chapter XIII FAQ

Q: How to change the playback window, the number, location and size?

A: "Control screen → screen management " set the screen number, the line starting out point, the column length, line height. LED playback position windows can also drag the mouse.

Q: Some video files can not play, how to deal with?

A: Please download the appropriate decoder, the installation is complete you can play all popular video formats.

Q: How to Set Auto Play lets the software started to set good content?

A: First, good editing program to play saved as a file *. t9, menu bar and select "Settings → Software Settings → Settings → Software automatically start playing automatically when the program " check, click "OK".

Q: How LEDSHOWT9 content of the other player to the LED display shows?

A: LED display shows the area is the area corresponding to the screen, LED screen, you will only need to move to the other player window area in the software settings, select "screenshot mode "or grasping side edges broadcast mode, restart the software to.

Q: Why play on the computer sometimes smooth, but the screen may not play smoothly.

A: Make sure to install the Gigabit Ethernet network card driver that comes with to ensure the performance of Gigabit Ethernet has been the best.

If you can not solve the problem, please contact the manufacturer.

Q: How to turn off the display by software?

A: Select the control of the menu bar off the large screen display screen .