

Version 5.3.13 19-April-2015

- Clublog https protocol changed from SSL to TLS to avoid error 102

Version 5.3.12 25-February-2015

- ADIF import bug fixed

Version 5.3.11 14-January-2015

- New AppleScript commands added for setting power and frequency

Version 5.3.10 22-December-2014

- FT-100 added (for TRX#1 only) Tnx Jim, WB0KWJ
- Norwegian translation added Tnx Rune, LA2OTA
- LoTW + eQSL bug fixed, which caused problems when sub modes were logged. Tnx Ron, DG2RON

Version 5.3.9 4-September-2014

- K7PT Alertbox: „Callsign added to dxcc.rsd“ removed
- HamQTH.com/qrz.com web link for station image is shown now — > click it to open a bigger window
- K3 Window / P3: Click for QSY feature removed. Polling the P3 for center frequency and set span caused CAT conflicts

Version 5.3.8 26-May-2014

- K3 Window: Macros added to be performed automatically after mode change —> See the Macro Edit view
- K3 Window: S-meters removed to reduce workload on a connected P3
- K3 Window: Moving the mouse over a VFO box will move the P3 curser accordingly, mouse click for QSY

Version 5.3.7 4-May-2014

- Modes and Submodes added to support ADIF version 3.0.4
- ARRL LoTW server address changed

A new file „Modes&Submodes.txt“ needs to be added to your RUMlog

folder. You can edit it, but make sure you stay compatible to ADIF. See the QRGs/Modes tab in the preferences. The bold printed modes are ADIF modes, the others ADIF submodes.

Version 5.3.5 16-March-2014

- Bug removed which caused a crash while reading a LoTW QSL file, tx Randy, K7RAN

Version 5.3.4 14-March-2014

- The new individual dx call windows are optional now: Preferences →DX Alarm

Version 5.3.3 17-February-2014

- DX-Cluster text announcements are correctly formatted now again.

Version 5.3.2 17-February-2014

- Bug fixed which caused a crash, when the simple tones were activated for the dx announcements

Version 5.3.1 16-February-2014

- Bug fixed - after QSO editing dxcc recognition was not working correctly sometimes
- Option added to bring up the qrz/HamQTH.com web page automatically - See the QSO menu
- The new dx-call announce windows are now repositioned after closing

Version 5.3 13-February-2014

- AppleScript function added: GetCallsign
- All additional band map windows remember position and scale per band
- Powerfield is now enabled for multiple QSO editing
- DX-Cluster: each call sign to announce opens its own window now for better tracking
- Processor load decreased for the K3 Control window
- HamQTH.com station pictures are shown now in the drawer window
- Logging fields are cleared now, when VFO is moved 5 kHz away
- There is now a separate simple www browser window available: Menu →Window →www Begin the url with http://

Some notes to the new dx-call windows:

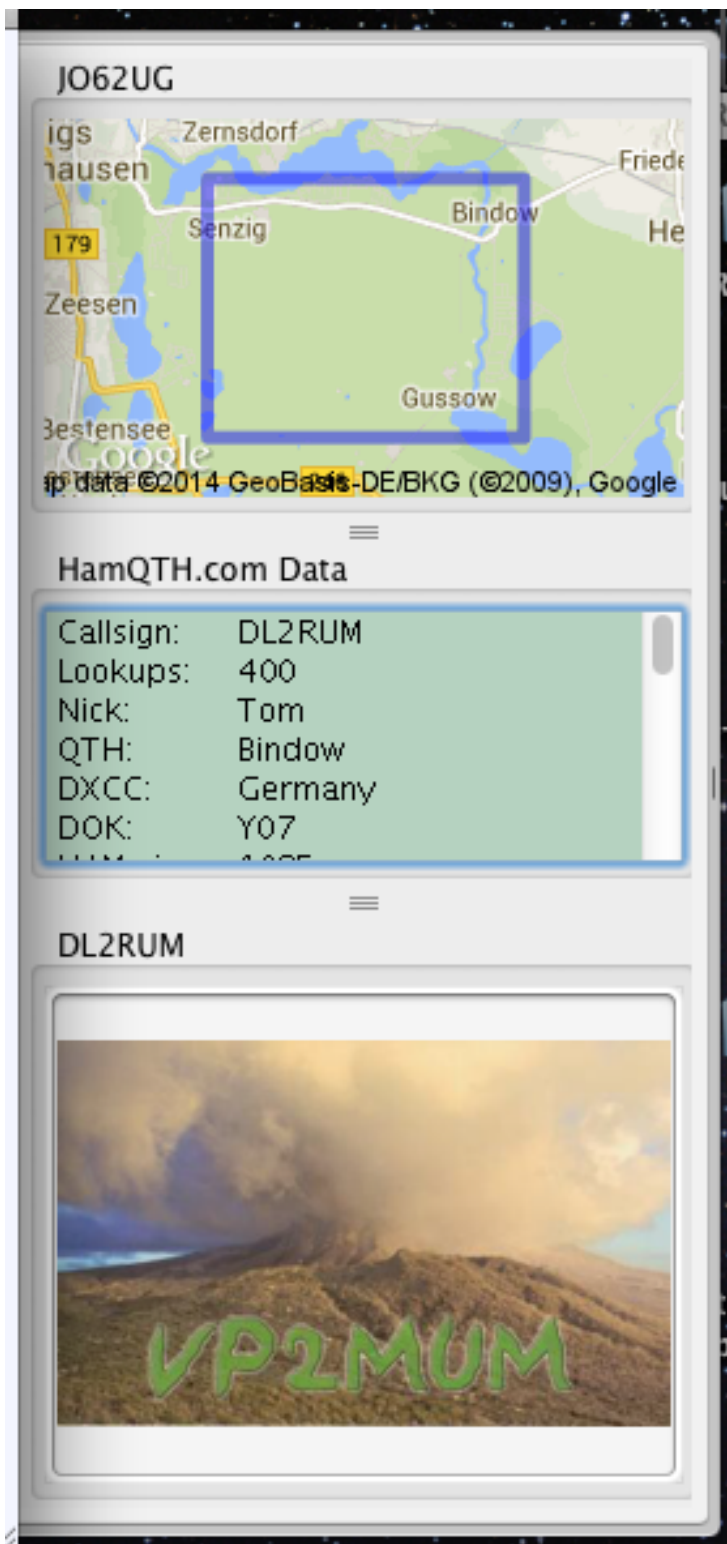
- arrange the windows on your screen in the sequence they were opened
- if you have closed a window, do not move another window into this gap
- move the column headers according your needs, all information from the spot window are included

5I0DX					
DX de	QRG	Mode	DX Call	For	Band
EA3XL	18149.0	Phone	5I0DX	1.8 h	17m
UT7EV	14260.0	Phone	5I0DX	25 min	20m
SP8BUH	14007.0	CW	5I0DX	14 min	20m
DL7JAN	14085.9	RTTY	5I0DX	9 min	20m
ON8ON	14085.6	Digi	5I0DX	Now	20m

FT5ZM					
DX de	QRG	Mode	DX Call	For	Band
IZ8BRI	7023.0	CW	FT5ZM	1.9 h	40m
SP3DIK	21023.0	CW	FT5ZM	43 min	15m
DJ1AA	14023.0	CW	FT5ZM	37 min	20m
EU10PE	3523.0	CW	FT5ZM	27 min	80m
DK1RS	18079.0	CW	FT5ZM	22 min	17m

W1AW/KH6					
DX de	QRG	Mode	DX Call	For	Band
IZ3XEF	18100.5	Digi	W1AW/KH6	1.9 h	17m
EA5ASQ	21035.0	CW	W1AW/KH6	21 min	15m

W1AW/4					
DX de	QRG	Mode	DX Call	For	Band
IZ8FFA	14280.0	Phone	W1AW/4.	7 min	20m



Version 5.2.8 ??-January-2014

- WPX table is now updating correctly. QSOs imported from a RUMped log file were not included.
- DXCC and Station info Box will be updated now after entering or

- deleting a QSO
- Available modes changed to ADIF 3.0.4

Version 5.2.7 11-November-2013

- Allowing to log more modes using an AppleScript

Version 5.2.6 03-November-2013

- Even more debug info printout removed from the small aux window :-)

Version 5.2.5 02-November-2013

- Debug info printout removed from the small aux window

Version 5.2.4 01-November-2013

- Solar Terrestrial Data windows are working again

Version 5.2.3 20-October-2013

- Solved problems with rig control in some configurations

Version 5.2.2 19-October-2013

- IC-7100 support added
- Portable designator /LH will be ignored now for dxcc recognition
- AppleScript commands added to get the direction to the country and to the exact station location. Mike, NF4L uses it for his rotor control software LRotor (<http://nf4l.com/rotor/>)
- Some bug fixing concerning Clublog

Attention: For all the contextual menus you have to Control click now! (IOTA, Manager, Counties)

Version 5.2.1 08-August-2013

- critical bug removed, occurred after deleting the last logged QSO

Version 5.2 04-August-2013

- Simple ESM interface for CW added if you want to run a pile up on the fly - see below
- 6-band and 10-band info for DXCC Challenge added (DXCC List Window)
- K7PT database will be downloaded now every 4 hours, helpful if you are running RUMlog 24/7
- WWV and Announcements are shown now in tabs beside the bands. Uncheck the options in Preferences—>DX-Cluster to hide the separate windows
- Additions made to use the advantages in tqsl V1.14 - see below
- Clublog Interface rewritten, there were few heavy bugs. When you are using the "Real Time Upload" option, you should delete your Log in Clublog and upload the full log again. (Menu—>Log—>Upload all QSOs to Clublog)
- All used modes in the Log are now selectable in the Search Window
- More AppleScript commands added

Changes for tqsl V1.14

Download from the ARRL here: <http://www.arrl.org/instructions> Put a copy into your RUMlog folder!

See the RUMlog Preferences LoTW tab for further settings. You can pass now the password for signing your QSOs. Further, tqsl can send the signed file to ARRL. Make the appropriate selection in the popup menu.

ESM (Enter sends messages)

Press the small triangle in the CW Window to show the ESM controls. You can control CW via keyboard or pressing the buttons.

F1-F3:	sends messages
Escape:	cancel transmission
Cmd W:	clear fields (wipe)
Ctrl L:	save QSO to log

Version 5.1.6 25-June-2013

- JT9 mode added

Version 5.1.5 13-June-2013

- Support for 33cm band added
- Added %HISNAME for CW, RTTY and PSK macros. The value from the logging mask name field will be used

Version 5.1.4 31-May-2013

- Changes made to work with Fldigi version >= 3.21.71
- Option added to reset both repots to 59(9) after logging (Preferences—>General)
- Support for 630m and 2.2km band added

Version 5.1.3 23-March-2013

- New logging time mode added: DL4XT: stops the clock when tapping out of the call sign field
- New Apple Script commands: getHeading, TxRprt, RxRprt and Comment

The Apple Script implementation is completely new, so your scripts may need to be recompiled.

Mike, NF4L uses the getHeading command for his rotor control application. See: <http://nf4l.com/rotor/rot.htm>

Version 5.1.2 13-February-2013

- cocoaModem doesn't open any longer when uploading LoTW data

Version 5.1.1 31-January-2013

- Option added to suppress qrz.com und HamQTH.com "Callsigns don't match!" messages
- Commands to set the callsign in Fldigi and cocoaModem added (see the Digi menu)
- IC-765 added

Version 5.1 20-December 2012

- Support for the Polish SP-PA award added
- Bug fixes in the County window and in the Multiple QSO Editing routine

Version 5.0.8 25-October-2012

- Clublog uploads are now performed in the background
- Use of new qrz.com server address (xml-subscription)
- Minor fixes for zones calculation for UA and UA9

Version 5.0.7 30-September 2012

- Polish translation added. Tnx Daniel, SP2-04-0586

Version 5.0.6 22-September 2012

- PSK tone marker is visible again

Version 5.0.5 4-September 2012

- Added missing County AZ, YAVAPAI
- Sending TRX data to fldigi is working again, was broken for some transceivers
- Option "Save spots to DX database" is back again, disappeared from the DX-Cluster Preference tab for an unknown reason.

Version 5.0.4 28-August 2012

- K7PT database is working again, was broken due to download format changes

Version 5.0.3 18-August 2012

- Option added to use the QSO Note as eQSL comment (RUMlog --> Preferences --> LoTW/eQSL tab)
- Option added to save a log in a SOTA compatible format (Search-Window --> Save as SOTA File)
- Most of the menu entries disabled during QSO Editing to avoid interferences
- Changes made in the K3 Control Window to be more useful for the KX3

Version 5.0.1 20-July-2012

- Minor changes for the K7PT database download routine

Version 5.0 19-July-2012

- ON6DP database support removed (No new updates for years now)
- County + Prefix tables added Menu-->Window--> ...
- Name + QTH logging fields added
- DX-Marathon markings per band added
- Multiple Editing of QSOs added - i.e. useful to enter a note for a batch of QSOS
- Multiple HamQTH lookups added to fill the log automatically Menu-->QSO-->Fill log with HamQTH.com data
- User can enter default values for Power and QSO Note for ADIF and RUMped imports
- More information printed now on paper QSLs for SAT QSOs
- Multiple eQSL QTH Nicknames are possible: Enter all QTHs in the eQSL preferences separated by a comma. Select the desired QTH in the "eQSL In Window"
- Option added to export the log csv formatted. In the Search Window select save as "Text File" or "Clipboard" and set the Option "Save as CSV" later on.
- SdrDx support
- Use of the K7PT Unique Callsign Database (Originally used for HRD) This will update four dxcc.rsd database automatically!
- Direct link to HamQTH.com or qrz.com Just klick the call sign in the data table
- US-County database added --> for a W, KL7 or KH6 QSO enter the State and select the County from the Contextual menu
- Real time Clublog support
- PSK with K3 only

Version 4.9.1 14-February-2012

- DXCCs will be marked for the DX Marathon, set the option in the preferences under the DX Alarm tab (<http://dxmarathon.com>)
- Winkeyer Sidetone settings added
- Partly Russian Translation
- Now correct dxcc recognition for UA stations, when the call is in the exception list (was always computed as UA9)

Version 4.9 24-January-2012

- Ham.QTH support added, see HamQTH.com for further info. Enter your access data in the Preferences under the "Maps/qrz" tab. Explore the QSO menu for functions
- QRPP option added in the Search Window
- "Do not Import dupes" option in the Import windows are sticky
- US States Window highlights the states row during logging
- Alaska and Hawaii added to the US-States Window
- K3 Control Window is now a ("normal") document-type window, not always on top
- qrz.com QSL info query works again
- Changes made for modified Google Maps API
- State field text limit changed to 15

Version 4.8.4 17-November-2011

- Better timing for the initial commands during a telnet dx-cluster connection

Version 4.8.3 16-November-2011

- Major bug fixed: the K3 Control Window pulled up to 70% CPU load
- Better timing during start up for the automatic LoTW download

Version 4.8.2 14-November-2011

- Clock works now for all time zones, there were problems for utc +8,5 and utc+9,5
- For the QSL label layout 15 rows are now possible, useful for Avery 8366 sheets
- QSL label printing: Layout failure corrected, when the QSO table header row is not used
- K3 Control Window can reopen now automatically
- "Callsign repeater field" added in the RTTY/PSK window
- IC-735 is working fine now
- New TRCVR option "Ignore mode when TRX reports "SSB", useful when you operate digital in normal SSB mode
- RUMlog works now with Growl 1.3 (version from the Mac App Store)
- qrz.com data can now be taken over automatically to the logging mask - see the QSO menu (**qrz.com xml subscriber only!**)
Following information are used: Name, QTH, ITU, CQ, Grid, State, county and IOTA. Please note: Always entered data can be lost!

- Option added to force the eQSL and/or LoTW download after startup. (Preferences-->LoTW/eQSL tab)
- Web based qrz.com service is working again
- User's Manual updated

Version 4.8.1 25-August -2011

- FT-857 confirmed working with the FT-897 setting
- Dedicated buttons (RTTY & PSK) for mode switching in the Digital Window
- For advanced users: Direct SQL queries in the logbook database (Search Window)
- Quick time slot settings according your ex-calls (Search Window)
- Bug fixed in DXCC calculation: UA9F, S, T, W and X were calculated as European Russia, but should be Asiatic Russia before 2011

Version 4.8 - 04-July-2011

- TS-590/TS-2000 and FT-847 added
- TenTec Eagle confirmed working using the TenTec Orion selection
- Select a QSO in the LoTW or eQSL in window to show all QSOs with this station in the log window
- DX spots colours are now user selectable
- Band tables for dx-spots (160m-6m)
- qrz.com call sign and QSL info lookup from dx spots table possible, using the menu short cuts only
- Multiple dx-cluster commands can be sent automatically after connect to fill up the band tables and band maps initially (Preferences-->DX-Cluster-->Set commands after login)

Version 4.7.1 - 04-July-2011

- Further Italian translations
- Tracking of Italian provinces
- when using RUMlog to operate RTTY or PSK, the correct TX frequency will be taken over into the logbook
- RUMlog can poll the mode and frequency from FLdigi, useful when your TRX is connected to FLdigi
- you can enter now your TX power as numerical
- for TX control you can select now CW revers as default

Version 4.7 - 31-May-2011

- Tracking of Russian Districts
- Tracking of French Departments
- Advanced dx spot table view

Enter the Russian District or the French Department number into the 'State' field. You can find the tables under the 'Window' menu.

DX Spot Table View

- you can adjust the column width using the mouse
- you can sort the table by time, call, qrg, beam heading, etc or reverse the sort direction by clicking in the header
- duplicated spots are removed programmatically from the table - Only the last spot from a station per band and mode is shown
- only spots from the last 2 hours are shown
- select a spot with the keyboard or with the mouse to see all spots with these station (all band, all modes last 2 hours) - the "mouse over" function will not work here
- double click a spot, or select one and pressing 'Enter' will change your TRX and fill in the log input fields (when logging window is not hidden)

When the dx window is active and you select Menu-->Window-->Properties you can choose between 2 views of new ones: The text can be colored, or the background:

DX Meldungen

Text View Table View

DX de	QRG	Mode	DX Call	Note	IOTA	utc	For	Heading
GW0ADC	21275.0	Fone	VR2XMT			1214z	4 min	66 deg
IZ8EFE	24903.0	CW	KH2/N2NL.	tnx 73 tu	OC-026	1215z	3 min	45 deg
RA0UF	14019.5	CW	UA0AWA/P	tu KK-54		1215z	3 min	50 deg
JE20KC	28022.0	CW	JE20KC	50w ??? onry pse..		1215z	3 min	42 deg
9M2IDJ	28442.0	Fone	ZS3Y.	cq asia and ja.		1214z	4 min	164 deg
N8AMM	14038.5	CW	J03HPM			1215z	3 min	42 deg
RA0FD	18087.2	CW	SE6Y.			1216z	2 min	36 deg
F1AEY	28470.0	Fone	VU2DSI			1216z	2 min	90 deg
E066JP	21240.0	Fone	E066JP	cpéciall call		1216z	2 min	93 deg
UY2RA	28012.0	CW	HS0ZBS	rst 559		1216z	2 min	81 deg
RA0UF	14005.0	CW	W7Q	tu		1216z	2 min	318 deg
F5XX	28007.6	CW	VU2GSM			1215z	3 min	90 deg
SV8PKE	21233.0	Fone	SV8PKJ.	cq DX cq DX samos eu-049	EU-049	1215z	3 min	143 deg
F4TTR	21027.9	CW	CT1JOP.	TU Nelson 73		1216z	2 min	229 deg
RY3D	7090.0	Fone	R2DX	CQ		1217z	1 min	39 deg
IZ7KGB	21300.0	Fone	C06LC	thanks for contact in q		1217z	1 min	286 deg
K2SNJ	18102.1	RTTY	UN1L.	RTTY		1216z	2 min	93 deg
RX3DTN	21071.2	PSK	5R8FL.	BPSK31		1216z	2 min	145 deg
EA1DGF	14175.0	Fone	GS3PYE/P			1218z	Now	292 deg
JE1GWO	21033.5	CW	EA3GHZ.	Tnx Joan		1218z	Now	220 deg

DX Meldungen

Text View Table View

DX de	QRG	Mode	DX Call	Note	IOTA	utc	For	Heading
IZ8EFE	24903.0	CW	KH2/N2NL.	tnx 73 tu	OC-026	1215z	4 min	45 deg
RA0UF	14019.5	CW	UA0AWA/P	tu KK-54		1215z	4 min	50 deg
JE20KC	28022.0	CW	JE20KC	50w ??? onry pse..		1215z	4 min	42 deg
9M2IDJ	28442.0	Fone	ZS3Y.	cq asia and ja.		1214z	5 min	164 deg
N8AMM	14038.5	CW	J03HPM			1215z	4 min	42 deg
RA0FD	18087.2	CW	SE6Y.			1216z	3 min	36 deg
F1AEY	28470.0	Fone	VU2DSI			1216z	3 min	90 deg
E066JP	21240.0	Fone	E066JP	cpéciall call		1216z	3 min	93 deg
UY2RA	28012.0	CW	HS0ZBS	rst 559		1216z	3 min	81 deg
F5XX	28007.6	CW	VU2GSM			1215z	4 min	90 deg
SV8PKE	21233.0	Fone	SV8PKJ.	cq DX cq DX samos eu-049	EU-049	1215z	4 min	143 deg
F4TTR	21027.9	CW	CT1JOP.	TU Nelson 73		1216z	3 min	229 deg
RY3D	7090.0	Fone	R2DX	CQ		1217z	2 min	39 deg
IZ7KGB	21300.0	Fone	C06LC	thanks for contact in q		1217z	2 min	286 deg
K2SNJ	18102.1	RTTY	UN1L.	RTTY		1216z	3 min	63 deg
RX3DTN	21071.2	PSK	5R8FL.	BPSK31		1216z	3 min	145 deg
EA1DGF	14175.0	Fone	GS3PYE/P			1218z	1 min	292 deg
JE1GWO	21033.5	CW	EA3GHZ.	Tnx Joan		1218z	1 min	220 deg
ZS2I	28120.0	PSK	ZS1I	PSK31		1218z	1 min	164 deg
K0JPL	14005.0	CW	W7Q	Not QSLing		1218z	1 min	318 deg
W3LPI	14035.1	CW	5R8FL			1218z	Now	145 deg

Version 4.6.10 - 20-April-2011

- "Out of bounds" exception in the band map windows cached

Version 4.6.9 - 18-April-2011

- 'Enter saves QSO' option added (Preferences-->General)

Version 4.6.8 - 10-April-2011

- Corrected serial port settings for WinKeyer

Version 4.6.7 - 30-March-2011

- All supported transceivers should work correct now when configured as TRX#2
- PowerSDR TRX control support added

Version 4.6.6 - 18-March-2011

- Support for IC-7200 added
- microHAM USB CW Keyer conformed working
- partly Dutch localization

Version 4.6.5 - 1-March-2011

- Corrections for the Ten-Tec Orion when using a microHAM device
- Options added to enable CTS and DTR flow control for the TRX com ports
- Option added for a quick view for all QSOs with one DXCC, just click into the DXCC info box

Version 4.6.4 - 28-February-2011

- Corrections for the FT-990

Version 4.6.3 - 25-February-2011

- Frequency tag added for the LoTW ADIF output file

Version 4.6.2 - 15-February-2011

- RUMped ver. 3 log files can be imported (Menu-->Log-->Import RUMped)
- More controls in the K3 window added. (S-meter for main and sub, RIT/XIT indication, memories, quick memories and direct frequency input)
- Mainwindow will be hidden now when tqsl starts, so the tqsl window will be visible

Version 4.6.1 - 11-February-2011

- "Do not import dupes" option added for ADIF import
- FT-990 support added

Version 4.6 - 31-January-2011

- QSL label editor added, print labels now on any paper size on any label format
- Address label print routine added
- Store multi media data now in your log file
- Save data from qrz.com in the Mac's Address Book
- Support for attached accounts in eQSL added
- DX cluster spot filter options added
- Option added to print/send QSLs for selected QSOs only. (Main Logging Window - Paper, LoTW, eQSL)
- Option added to mark QSOs for resending QSLs in the Search Window (All found or selected ones only)
- Option added to export selected QSOs only rather than the full list in the Search Window
- Added more K3 controls

Find below a short description about the changes, for further information see the User's Manual.

Label Editor

Menu-->QSL-->Label Editor Here you can create your own label or load templates ready to use

Address label print

When a qrz.com (xml subscription required) address is shown, add this address to the printer queue using Menu-->QSL-->Address to Printer Queue

To print all selected addresses use Menu-->QSL-->Print Saved Addresses The same label size as selected in the Label Editor will be used.

Multi Media

You can drag and drop files or text clips into the call sign info box. Text, PDF, audio or video files are supported. The data will be stored within your log file. The word "Data" appears in the call sign info box, when files are available for the entered station. Mouse click on the word "Data" to bring the data into view. To see all you files use Menu-->Window-->Multi Media

AddressBook

To save a shown qrz.com (xml subscription required) address in the Mac's Address Book application use Menu-->Add Data to Address Book

These data will be stored in a new contact group called "RUMlog". In the QSO menu is also an option available to store automatically all gathered addresses from qrz.com.

Attached accounts in eQSL

In the preferences under the LoTW/eQSL tab you can optionally enter now your QTH nickname, if you have multiple accounts.

DX Cluster filter option

Two more filter options are available in the Preferences under the DX-Alerts tab. "Show LoTW users only" and "Show selected new ones only" Both options affect the DX announcements (window+alerts) only and help to de-clutter it.

QSL Printing and Export options

For exporting log data from the Search Window or printing/sending QSLs is another option available: When you have QSO lines selected, only these QSOs will be affected by a menu or export command. When there is no selection in the table, all QSOs will be affected.

More K3 Controls



I added few VFO controls. You will notice some buttons have rounded corners, others not. When you push and hold a rounded button, then the VFO B will be affected. During a long Push you can set the mode and the band for the sub rx.

The band buttons have a further function, a kind of band stacking register.

The first push will set the trx to the last used frequency and mode.

The second push sets the K3 to the beginning of the CW band.

The third push sets the K3 to the RTTY portion of the band

The fourth push sets the trx to the dx part in SSB

A fifth push bring you back to the last used frequency and mode.
The used frequencies for CW, Data and SSB are hard coded.

Version 4.5.3 - 3-November-2010

- Minor failure during ADIF import removed

Version 4.5.2 - 30-October-2010

- Corrected some text format failures in the DX Window, seen when DXGRID is set to on (Cluster side option) only

Version 4.5.1

- tx_pwr tag supported during ADIF import
- It's possible again to tab out of the frequency field (bug in 4.5)

Version 4.5 - 16-October-2010

- Adding a log import routine for Fldigi log files - either manually or automatically
- Frequency field in the logging mask shows now the decimal
- DX spots show now distance and beam heading
- Bug fixed in DXCC calculation (Zones for W and HB0 were calculated wrong)

Fldigi Log import

Before activating this feature, backup your RUMlog log first!

In the RUMlog preferences under the Digi tab, select your fldigi logbook. Normally the folder is hidden in your home directory: `~/fldigi/logs/logbook.adif` To select a hidden folder press Command Shift Period in the Open File Requester and navigate to your log.

In the Digi menu you will find 2 new menu entries, one for manual import, one for auto import. The Auto option is a switch, when checked the log will be checked every 30 seconds and imported when there are new entries. When you are working with RUMlog at the same time, you may be notice side effects. Please observe.

Using the manual option will import the new entries.

How it works? Limitations?

I check the modification date of the logbook file. When there are changes, only the new QSOs will be imported. RUMlog saves the date and time of the last QSO. When you add a QSO in the fldigi log with an older date, this will not be imported. Prior importing I check, if the QSO is

in the log already. I check for date, time, call, band and mode.

Version 4.4.15 - 16-September-2010

- Adding modes according ADIF 2.2.6

Version 4.4.14 - 1-August-2010

- Bugfixing %LastLocator variable

Version 4.4.13 - 16-July-2010

- Full German Translation for the Preferences Window

Version 4.4.12 - 6-July-2010

- For dx cluster command macros you can use now 4 or 6 digit locators. (%LastDXLocator4 or %LastDXLocator6)

Version 4.4.11 - 24-June-2010

- qrz.com log data subscription support added
- Italian translation added - Tnx to Maurizio, IOWM

qrz.com

You will need the subscription to get all data. (<http://www.qrz.com/i/subscriptions.html>) Enter your qrz.com login data into the RUMlog preferences under the QRZ/Map tap.

The new xml interface allows to read more data and the map is back again. Further you can click now on a dataset to take it over into the logging fields:

- Name
- ITU-Zone
- CW-Zone
- County
- State
- IOTA
- QSL Manager
- Locator
- e-mail - opens Mail
- URL - opens in your web browser

There is no auto transfer! When you delete your login data, you will get back the known table view, but no map.

Version 4.4.10 - 12-June-2010

- qrz.com call sign look up works again - qrz.com does not provide the ww-locator (grid square) information any longer in the free service. That's why the stations can not be shown in GoogleMaps or GoogleEarth automatically. To see the map, you have to enter the locator manually.
- The downloaded eQSL user database is being updated correctly now

Version 4.4.9 - 31-May-2010

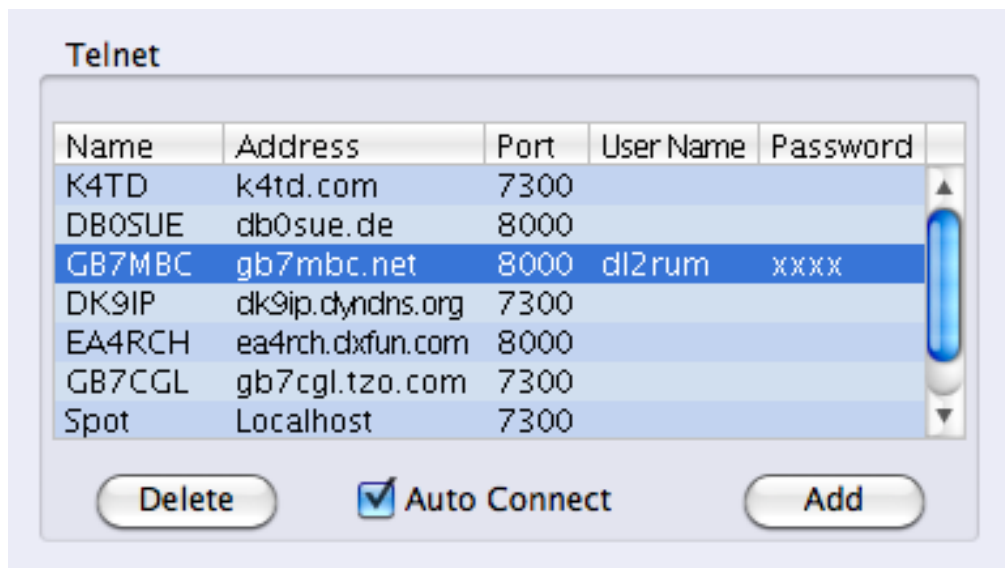
- Data transfer rate to Fldigi reduced in some cases to prevent overloading Fldigi

Version 4.4.8 - 30-May-2010

- Net Control Window: It's possible now to delete entries (call signs) from the database, use the 'Delete' button
- More sun picture options, see the Window menu
- DX-Cluster login with username and password
- French translation - tnx Daniel, F6FLU
- eQSL User Database (AG-Members) added
- 6m Bandplan deactivated for DX spots, the mode computation on 6m was never working reliable
- Limited Fldigi support
- Failure removed, when opening older RUMlog log files
- Failure removed, when using RTTY with K3 for TX and cocoaModem for RX

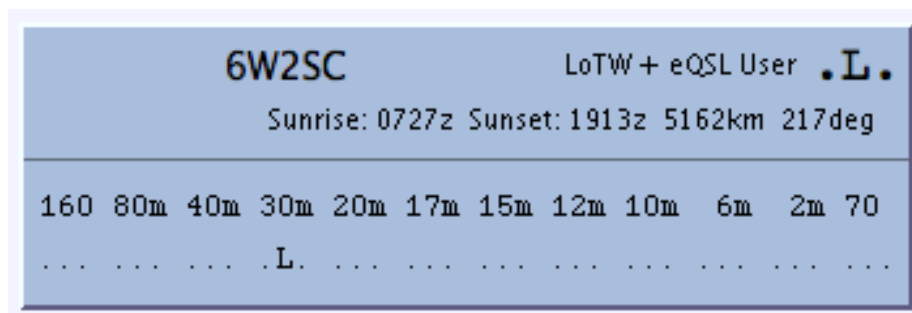
DX Cluster Log In

Log into your dx-cluster now, using a username and a password. Under the DX-Cluster tab in the Preferences you can enter your data. When no username is provided, your active call sign will be used for log in. Please note, your password is seen and saved as plan text!



eQSL AG members

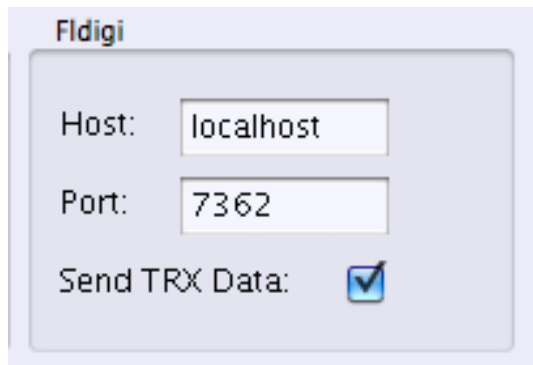
Authenticity Guaranteed eQSL users (AG members) are identified now in the Station Info Box. To update the database use the Menu-->File-->Reload eQSL user Database.



Fldigi Support

RUMlog can now exchange data with Fldigi. (<http://www.w1hkj.com/Fldigi.html>) There is a small Fldigi section in the Preferences under the Digi tab. The port 7362 is the standard control port for Fldigi and needs normally no changes. For 'Host' use the address (or IP number) for the computer where Fldigi runs, in most cases on the same computer. (localhost or 127.0.0.1)

When the box 'Send TRX DATA' is checked, RUMlog sends TRX mode and frequency data to Fldigi. In RUMlog you can poll the currently used call sign from Fldigi using Menu-->Digi-->Fldigi - Call Check



Version 4.4.7 - 16-May-2010

- Direkt RTTY (RX and TX) option with K3 added. In the K3 you have to use MCU 3.94 or better, this is currently a Beta version!
- Bug removed: Lists can be deleted now in the Net Control Window
- Tnx to Keith, WA0TJT

Version 4.4.6 - 16-April-2010

- Multiple minor bugs fixed
- Telnet dx cluster does not require an internet connection now, this allows to to connect to a local cluster (skimmer) when an internet access is not available

Version 4.4.5 - Not public

Version 4.4.4 - 31-March-2010

- AppleScript Commands for PTT switching provided
- PTT AppleScripts added for cocoaModem

Version 4.4.3 - 29-March-2010

- HTML based windows rendering failures removed - long history
- All windows should show the Menu bar now
- K3 power indication corrected

Version 4.4.2 - 26-March-2010

- Some rendering failures removed

- New: FT-950 confirmed functionally, use the FT-2000 setting

Version 4.4.1 - 25-March-2010

- RUMrouter doesn't start now when not required

Version 4.4 - 25-March-2010

- Digital Window added, work RTTY and PSK direct in RUMlog - Menu-->Digi
- K3 Control Window added - Menu-->Transceiver-->K3 Info
- Multiple dx-cluster connections are possible, connect now to your local skimmer - Menu-->Window-->New Telnet Cluster
- LoTW users are indicated in the Station Info box
- User downloadable LoTW User database - Menu-->File-->Load LoTW User Database
- Direct eQSL upload, upload your log with one mouse click Menu-->QSL-->eQSL Direct Upload
- Disconnect Radio command added, useful if you want to connect your radio temporarily to another application - Menu-->Transceiver-->Disconnect
- Greek and Spanish localisations (Partly) - tnx Manos, SV1DAY and Jonathan, EA1HET

Version 4.3.4 - 08-February-2010

- Critical bug in TRX control removed, while editing QSOs the TRX was able to overwrite mode and frequency data. Tnx Rick, K6LE

Version 4.3.3 - 04-February-2010

- Automatic LoTW download works again, a SSL 3 connection is used now
- Minor bug fixes

Version 4.3 - 08-January-2010

- Ten-Tec Orion support added
- CW Output via WinKeyer, K3 or microKeyer II
- Advanced Net Control Window
- LoTW users are indicated in dx spots (a dot after the call sign)

- Bug fixes

Version 4.2.4 - 29-October-2009

- The "Spot last QSO" dx-cluster function should work now properly.

Version 4.2.3 - 27-October-2009

- The ADIF export from the QSL Print Window uses now Windows end of line endings (line feed + carriage return) This is do to work around an import bug in global QSL

Version 4.2.2 - 26-October-2009

- The ADIF export from the QSL Print Window is correct formatted now and the file name has the .adi extension now
- The field QSL in the logging mask will **not** change the value to "W" after logging a QSO

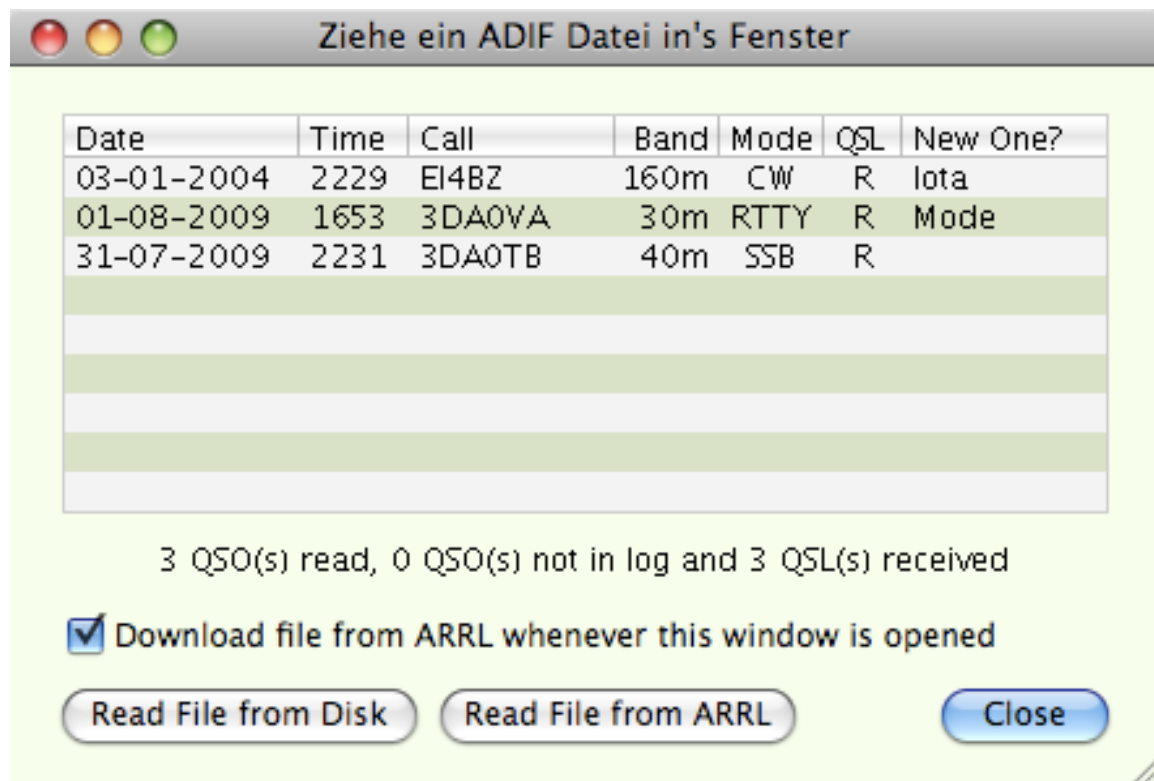
Version 4.2 - 15-October-2009

- Native Elecraft K3 support
- Yaesu FT-2000 and FT-450 Support functional now
- RUMlog remembers the last open windows and reopen these at next program start (most useful windows)
- User editable colour schemes
- Net Control Window added, useful for net controllers only
- New Talk Window, pops up when you get a private message via the dx-cluster (talk command) - telnet cluster only
- Auto Google Earth look up works now as expected
- Scrolling bug in the terminal fixed
- User's manual updated to version 4.2

Version 4.1 - 23-September-2009

When you change a main prefix in the dxcc table using the EditDXCC.app it is not longer required to rework your logs, this will be done automatically now. Make sure you have opened all your logs once with version 4.1 to make some changes on the database structure. After that you can just change the main prefix in EditDXCC.app without any further action. Just reload the log into RUMlog.

The LoTW QSL in Window shows now, if a QSL represents a new one. (not confirmed yet - Paper QSL or LoTW)



EI4BZ confirmed a new island. (IOTA is always band independent)
3DA was not confirmed in a Digi mode before

Version 4.0.4 - 24-August-2009

The internet based Station's Locator lookup works again. This was broken due to changes on the server.

Version 4.0.3 - 16-August-2009

The window based Google Map is working again.

Version 4.0.2 - 8-August-2009

Fixed some viewing problems (not all) in the drawer window

Version 4.0.1 - 7-August-2009

The font size selection in the dx cluster windows is working again, was broken in 4.0

Tnx to Leo, DK5PR

Version 4.0 - 3-August-2009

A lot of new functions are introduced in version 4. The most important are:

- Enable Satellite QSO logging
- Iota logging and tracking
- Locator tracking
- Dual transceiver support
- Own IOTA and qsl manager database
- IOTA alerts

The User's manual is completely rewritten, see the accordingly chapters in the manual for further information.

For history prior version 4.0 see here:

<http://dl2rum.de/rumsoft/rumloghistory.html>