



AQUAPORT®

water for life

AQP-UBC



Installation & Operating Instructions



AQP-UBC
Undersink Water Chiller



SYSTEM

select

Congratulations on your purchase of an Aquaport water chiller unit

AQUAPORT SELECT 3 STEP SYSTEM

Thank you for purchasing the Aquaport under sink water chiller.

This unit is easy to install in conjunction with any Aquaport under sink water filtration system and can also be installed with any existing filtration system.

The unit is designed to provide 7lt of chilled filtered water on tap per/hr.

Note: Please read through the instructions carefully before using or installing the product and ensure that the manual is kept in a safe place for future reference.

The system must be properly installed and located in accordance with the installation instructions before it is used.

Register your warranty online at www.aquaport/warranty

CUSTOMER HOTLINE: 1300 764 325

Aquaport Corporation Pty Ltd
PO Box 81 Findon SA 5023 Australia
Telephone: 1300 764 325
Facsimile: 08 8354 0722
Email: aquaport@aquaport.com.au
Web: www.aquaport.com.au



N 23934

Maximum Water Temperature: 38°C
Min. Operating Temp. 5°C / 40°F
Electrical Requirements:
Australia / New Zealand 240V / 230V 50Hz
Maximum Pressure: 690 KPA (100 psi)
Climatic Class: T

IMPORTANT SAFEGUARDS

When using electrical appliances, basic safety precautions should always be followed .

- Read all instructions carefully.
- Ventilation – The air vents must not be obstructed at any time, air flow is required for unit to operate effectively.
- To protect against fire, electric shock and personal injury, do not immerse cord, plugs, or appliance in water or other liquid.
- Close supervision is necessary when any appliance is used by or near children.
- Unplug from outlet when not in use and before cleaning.
- Do not operate any appliance with a damaged cord or plug or after the appliance malfunctions, or has been damaged in any manner.
- Return appliance to the nearest authorized service facility for examination, repair or adjustment.
- The use of accessory attachments not recommended by the appliance manufacturer may result in fire, electric shock or

personal injury.

- Do not use outdoors.
- Do not let cord hang over edge of table or counter, or touch hot surfaces.
- Do not place on or near a hot gas or electric burner, or in a heated oven.
- Do not use appliance for other than intended use.
- This appliance should always be used in conjunction with a safety switch.
- Place unit in a flat well-ventilated location at least 100mm from wall or other Appliances.
- Ensure unit is properly grounded.
- A power outlet is required to operate the undersink water chiller.

For best performance, do not place the unit near an oven, heater, direct sunlight or other heat source.

SPECIAL PRODUCT INSTRUCTIONS

This appliances is designed for either household or personal use. Each model is designed to supply a certain maximum number of servings per hour. Please consult with your sales representative or our Website for the proper Aquaport unit for your specific needs. Any servicing other than cleaning and user maintenance will violate the terms of this WARRANTY.

CAUTIONS:

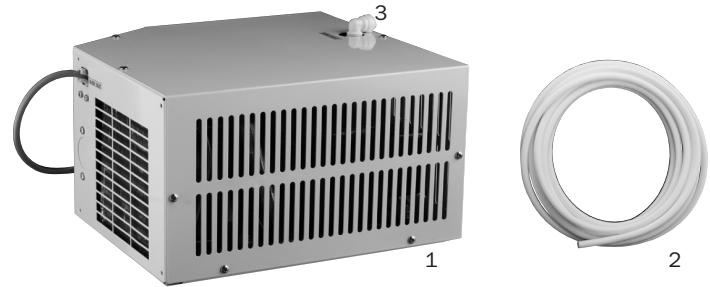
- Do not immerse base in water or try to disassemble.
- Do not lay unit on its side, always keep flat.
- If the supply cord is damaged, it must be replaced by the manufacturer, its service agent or similarly qualified persons in order to avoid a hazard.
- Check voltage to be sure that the voltage indicated on the nameplate agrees with your voltage.
- Never clean with scouring powders or abrasives.
- Keep the product away from direct sunlight.
- A power outlet is required to operate the undersink water chiller.
- Place the undersink water chiller away from any possible water leaks from filtration systems or dishwashers.

INSTALLATION INSTRUCTIONS

A. Component identification and content check list:

Model AQP-UBC - Undersink Water Chiller

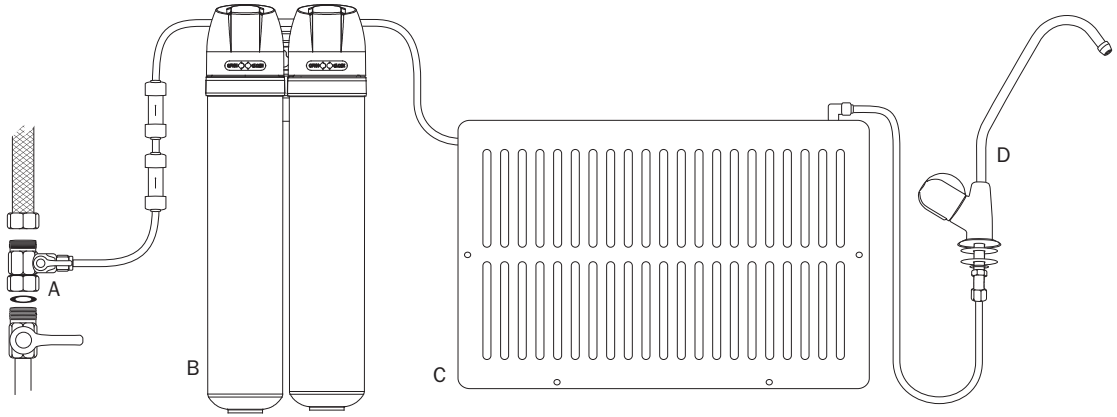
Ref	Description	Qty
1	Undersink Water Chiller	1
2	3m of 1/4' hose	1
3	3/8" to 1/4" Right Angle Quick Fitting (installed on unit)	1



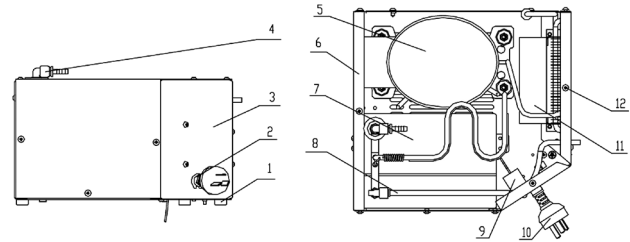
Typical Installation Diagram

- A. Mains Water Connection.
- B. Filtration System.
- C. Undersink Water Chiller.
- D. Filtered Water Faucet.

(Product A, B & D sold separately)



- | | |
|------------------------|-------------------|
| 1 Foot | 7 Aluminium Board |
| 2 Rubber Ring | 8 PE Tube |
| 3 Side Panel | 9 Thermostat |
| 4 Outlet Quick Fitting | 10 Power Cord |
| 5 Compressor | 11 Fan |
| 6 Mounting Plate | 12 Condenser |



B. Chiller Unit Installation

The Undersink Water Chiller is an additional item that is to be installed in conjunction with an existing filtration system. If you have purchased the Undersink Water Chiller with a separate filtration system, the Undersink Water Chiller must be installed last. Please follow all instructions relating to the filtration system before installing the Undersink Water Chiller.

The following installation instructions only apply to the Undersink Water Chiller once a filtration system has been installed by a qualified plumber or technician.

- 1 Close the filtration systems shut off valve and drain any excess water from the faucet.
- 2 Disconnect the outlet hose from the filtration system (Note some water may leak from the hose)
- 3 Place the Undersink Water Chiller under the sink or close to your filtration system. Ensure the unit is at least 100mm away from any obstruction to allow sufficient air ventilation from either side.
- 4 Once the Undersink Water Chiller has been placed correctly, measure the distance from the outlet of the filtration system to the inlet of the Undersink Water Chiller. Cut a piece of 1/4" hose supplied so that it will reach both outlet and inlet. (Allow at least 20cm for slack).

Note: The connection hose on the Undersink Water Chiller inlet is permanently attached to the unit.

- 5 Connect the outlet on the filtration system to the inlet on the Undersink Water Chiller. (Note: both outlet and inlet should be supplied with a quick fitting connection, the hose must be pushed in and far as possible then pulled back to ensure a tight connection has occurred, refer to page 5 for instructions.
- 6 Disconnect the 1/4" hose connected to the faucet and install the 1/4" hose from the outlet of the Undersink Water Chiller unit to the faucet.
- 7 Ensure that the water inlet pressure does not exceed 7 Bar (100PSI) before turning the unit on. A pressure limiting valve maybe required, refer to a qualified plumber.
- 8 Open the shut off value to the filtration system and turn on the faucet to allow the water to flow. It may take a few minutes for the water to go through the system.
- 9 Ensure all connections are water tight and no leaks occur before plugging the Undersink Water Chiller into the water socket and turning on.

Note: Avoid installing unit in a dusty environment. If this cannot be avoided you must ensure that the fan for the condenser remains clean and clear from dust. If air flow is restricted the temperature of the unit will increase and automatically shut off.

D. Tubing Installation

The Undersink Water Chiller has been supplied with quick and easy to install quick connections.

To install tubing, push tubing into connections, and give a slight pull to ensure tubing is secure.

Note: Check the end of the tubing to make sure there are no cuts, nicks, flat spots or sharp edges. If any of these are present, cut the end with scissors or utility knife.

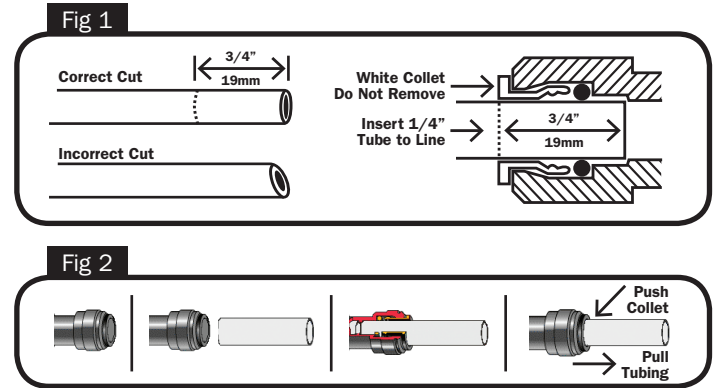
1. Measure 3/4" (19.05mm) from the end of the tubing provided and mark with a pencil. Fig 1.
2. Push the 1/4" tubing firmly into each fitting as per step 5 on page 4 until the pencil mark is pushed next to the collet or until tubing is fully seated. Fig 1. If tubing is removed, re-cut the end, measure, mark and re-insert.

Note: To remove tubing, push collet against the face of fitting and remove the hose (with collet still held against fitting face) Fig 2.

Tubing must be fully inserted/seated to avoid leaks.

Repeat for all other connections.

3. Pull slightly on tubing to ensure tube is secure.



C. Product Use

Always closely supervise children around this appliance.

If the supply cord is damaged, it must be replaced by the manufacturer, its service agent or similarly qualified persons in order to avoid a hazard.

The Undersink Water Chiller has been rated to provide a limited number of servings per hour.

Based on an ambient water temperature of 23°C the unit should provide 7lt of cold water per hour under 10°C.

If a large amount of water has been drawn from the Undersink Water Chiller, it will take approximately 2-3 minutes to recover in order to provide cool water under 10°C.

Do not hesitate to contact our Customer Care Service line on 1300 764 325 or aquaport@aquaport.com.au

D. Chiller Unit Not Used For Long Periods

If the unit has not been used for a long period of time turn the unit off from the power switch and unplug. Disconnect the inlet and outlet pipes and use clean compressed air to blow through the inlet pipe.

WARNING excess water may leak when disconnecting.

When cleaned, reinstall unit according to the installation instructions on page 5 and flush unit for 2-3 minutes.

Use a soft damp cloth to wipe down the unit.

Do not submerge the unit in water or spray with any substance, including water.

G. Trouble Shooting

BEFORE YOU CALL FOR SERVICE PLEASE REVIEW THE TROUBLE SHOOTING TIPS FIRST.

Problem	Possible Causes	What To Do
No power.	Is the unit plugged into the wall socket?	Check connection to wall socket.
Not cooling.	Build up of dust maybe clogging fan grill. Is the fan and compressor running?	Turn off unit and clean dust from fan grill. Check connection to wall socket, if ok then call customer service on 1300 764 325.
Water is leaking.	Loose hose connection. Water pressure is too high. Internal connection maybe have come loose.	Turn off water supply to unit and ensure all hose connections are secure. Check pressure limiting valve is installed and set to 100PSI. Call customer service on 1300 764 325.
No water flow from faucet.	Inlet and outlet hose connected incorrectly. Filters are blocked. Filtration shut off valve turned off. Unit is freezing.	Ensure the outlet and inlet connections are installed correctly. Replace filters on filtration system. Turn on shut off valve to filter system. Cooling pipe inside unit may have frozen. Call customer service on 1300 764 325.
Bad taste from faucet.	Unit is new. Filters are old. Contaminated water supply.	Flush water from the unit thoroughly for 10 mins to alleviant taste. Change filters on filtration system. Check with water supplier to ensure water has not been contaminated.
Noise from fan or unit.	Improper installation. Damaged during freight.	Turn off unit and ensure the unit is on a solid level surface. Call customer service on 1300 764 325.

H. Your AquaPort 12 Month Replacement Warranty

AquaPort warrants this appliance to the first purchaser and subject to the stated conditions:

Warranty warrants any defect in materials or workmanship in the manufactured product, within the first twelve months from the date of purchase will be repaired or the unit will be replaced at our discretion.

The Undersink Water Chiller has a maximum and minimum water supply pressure limits. The water supply pressure must not exceed the maximum and minimum water supply pressure limits specified in the Systems Specifications on page 4, step 7.

Register online now for your chance to win monthly prizes at www.aquaPort.com.au

Conditions Of This Warranty:

1. This product has been fully installed in accordance with the user manual installation instructions and relative plumbing codes and the working pressure does not exceed the limits stated herein.

Note: We recommend a qualified licensed plumber install the system, who is prepared to guarantee their workmanship.

2. The warranty extends only to repairing or replacing any component that proves to be defective in material or workmanship.

3. The warranty does not cover defects occasioned by misuse, alterations, accidents, or used for other than the intended purpose.

4. The warranty does not cover use of this product where water is microbiologically unsafe or of unknown quality, without adequate disinfection before or after the system.

5. The warranty does not cover damage to the product caused by accident, fire, or floods.

To enable us to register your warranty and provide service should a problem occur, we recommend you fill out the section below and return it to us immediately with copy of proof of purchase.



CUSTOMER HOTLINE: 1300 764 325

Aquaport Corporation Pty Ltd
PO Box 81 Findon SA 5023 Australia

Telephone: 08 8354 0711

Facsimile: 08 8354 0722

Email: aquaport@aquaport.com.au

Web: www.aquaport.com.au