

C5400 & C5400n Computer Connections & Software Install Guide

Installation Overview: Windows

Network Installation: Model C5400n Only

- Ethernet Connection 2
- Software: TCP/IP 3
- Software: Novell 8

USB Port Installation

- Computer Connection 10
- Driver Installation, Windows XP 11
- Driver Installation, Windows 2000 12
- Driver Installation, Windows Me 13
- Driver Installation, Windows 98 14

Parallel Port Installation

- Computer Connection 15
- Driver Installation 16

Additional Software

- Utilities, Activating Accessories, etc. .. 17

Installation Overview: Macintosh

- Network Connection 18
- USB Connection 19
- Software, OS 9.1+ 20
- Software, OS 10.1 and higher 22

Windows Environment Considerations

USB Versus Parallel

Installation instructions are included for both USB and parallel connections. *We recommend using a USB connection, as your printer is performance optimized for a USB interface.*

Printer Drivers Available

Model 5400

Model C5400 comes with a PCL driver.

Model C5400n

Model C5400n comes with a PCL driver and a Postscript emulation driver.

When to Use the PCL Driver

If you use TrueType fonts and you do not print PostScript® graphics (including “.eps” files), choose the PCL driver. This will be more efficient and give good results.

When to Use the Postscript Emulation Driver

If you use PostScript fonts or you will be printing PostScript graphics, choose the Postscript emulation driver. Performance will be faster and graphics will be printed at their best quality.

Service and Support

First ...

Consult the store where you purchased your printer.

Additional OKI Resources

▶ Available 24 hours a day, 7 days a week

- Visit our multilingual web site: www.okidata.com.
- Visit my.okidata.com.
- Call 1-800-654-3282.

Windows Network Installation: Model C5400n Only

Ethernet Connection

Note: *No Ethernet® cable is supplied with the printer. Use an Ethernet cable with two twisted wire pairs and an RJ45 plug.*

- Turn off the printer.
- Remove the plug (1) from the Ethernet port (2), then connect your Ethernet cable to the port.
- Connect the other end of the cable to the network port.
- Turn on the printer and wait for the print server's STATUS light (3) to stop blinking.
- Press the TEST button (4) on the print server. The *Network Information* configuration sheets print. Keep these sheets handy: they contain information you need to set up the printer on your network.



Windows Network Installation: Model C5400n Only

Software: TCP/IP

Note: *Installing a printer on a network is best handled by someone familiar with networks (such as a network Administrator).*

For more detailed information on the OkiLAN® 8100e SoftNIC print server, see the OkiLAN 8100e User's Guide on the Manuals CD supplied with your printer.

Included Network Software for TCP/IP

Your driver CD includes the following network software:

Installation/Config

Oki LPR

Supports TCP/IP printing. Creates an OKI printer port and installs a pop-up utility to monitor the printer status.

Admin Mgr / Quick Setup Utility

Use this to set up the various computers on your network for use with the printer. Can be run directly off the CD or installed on the computer.

- *For users who do not have/want IIS loaded on their system.*
- *This utility has a Quick Setup button for users not familiar with network administration.*

Storage Device Manager Utility

Manages the hard disk drive (optional on most models) and the printer's built-in flash memory.

Web Driver Installer Utility

Use this to discover printers connected to a TCP/IP network and to display discovered printers on a web page so that clients can download the necessary drivers directly from that URL.

- *Requires Microsoft IIS 4 or above.*

Administration Tools

PrintSuperVision

Provides access to network printer data for monitoring, reporting and managing networked printers.

- *Installs on either IIS or PWS Microsoft Web servers.*

Job Accounting

Tracks network printer usage by job, user, or Account ID for internal reports and bill-back purposes.

Network Printer Status

Creates an additional STATUS tab in the printer Properties dialog box.

The IP Address

An IP address is required to install the drivers. If you are using DHCP, the IP address will automatically be detected. If you are *not* using DHCP, you need to obtain the IP Address from your network Administrator and enter it using the front panel:

- Press **+** until you see **NETWORK MENU** on the display, then press **ENTER**.
- Press **+** until you see **IP ADDRESS SET**, then press **ENTER**.
- Press **+** to change the setting to **MANUAL**, and press **ENTER**, then **BACK**.
- Press **+** (**IP ADDRESS** appears), then press **ENTER**.
- Use the **+** and **-** to set each set of digits in the IP Address, pressing **ENTER** to go to the next set of digits.
- Press **BACK**, then press **ON LINE**.

(continued on next page)

Windows Network Installation: Model C5400n Only

Software: TCP/IP (cont.)

Set Up the Network

Use either one:

Admin Mgr / Quick Setup utility (see below)

- does *not* require IIS
- has Quick Setup option for users less familiar with network configuration

Web Driver Installer utility (see page 6)

- requires IIS4 or above.
- for more experienced users
- Clients are informed of the new printer by email and can click the URL line in the email to download the printer driver(s) from the web page set up by the administrator.

The Admin Mgr / Quick Setup Utility

Run the Utility

- Insert the Drivers CD supplied with your printer in the CD-ROM drive. The CD will autorun. (If it doesn't, click **Start** → **Run** → **Browse**. Browse to your CD-ROM drive, double-click **Install.exe**, click **OK**.)
- The **License Agreement** appears, click **Next**.
- Select your language.
- The **Menu Installer Software Installation** dialog box appears. Click the **Network Software** button.
- Click the **Installation/Config** button.
- Click the **Admin Mgr / Quick Setup** button.
- The **OkiLAN 8100e Softnic Setup Utility** dialog box appears. Select your language.

- Select from the following buttons:
 - **Please read before using**. Readme file containing information and instructions for this utility.
 - **OkiLAN 8100e Softnic Standard Setup**. If you are experienced in network setup and want access to all the setting options, click this button and follow the on-screen instructions for completing the installation, leaving the **Menu Installer** open.
- Note:** *With Standard Setup, you can either set up the network while running the utility off the CD, or install the utility on your computer and then launch it from there [Start → Programs → Oki Setup Utility → AdminManager].*
- **OkiLAN 8100e Softnic Quick Setup**. This setup is for less experienced users and does not provide as many setting options as the Standard Setup. To use Quick Setup, click this button and follow the steps below.
- The **Welcome** dialog box appears. Click **Next**.
Note: *If the Ethernet Address information does not automatically appear, click **Search** and wait for the utility to locate and load in the printer.*
- Click the Ethernet information displayed for your printer, then click **Next**.
- Select **Yes** for TCP/IP protocol and click **Next**.
- Select **Obtain an IP Address automatically**, then click **Next**.
- Select **No** for NetWare protocol, then click **Next**.
- Select **No** for EtherTalk protocol, then click **Next**.
- Select **No** for NetBEUI protocol, then click **Next**.
- Click **Execute**.
- Click **Finish**.
- Click the **Exit** button, then click **Yes**.
- Click the **Back** button twice.

(continued on next page)

Windows Network Installation: Model C5400n Only

Software: TCP/IP (cont.)

Install the Drivers

To Install the Postscript Emulation Driver

- Click the **Printer Driver Installer** button.
- The **Local or network printer** dialog box appears. Select **Network Printer**. Click **Next**.
- The **Connection type** dialog box appears. Select **Directly to the network...** and click **Next**.
- The **TCP/IP Connection** dialog box appears. Follow the on-screen instructions to complete the installation.

To Install the PCL Driver

Use the Add Printer wizard:

- Click **Start** → **Settings** → **Printers [Printers and Faxes for XP]** → **Add Printer**.
The Add Printer Wizard appears.
- Follow the on-screen instructions.

Note: *When prompted, select Local port, then select LPT1 temporarily. After the driver is installed, go back and set its port up for the network.*

*The PCL driver is located on the Drivers CD under
Drivers\C5400n\english\win2k_xp\ok725.inf*

- Click **Finish**.

Use the Oki LPR Utility to discover the printer:

- To activate/install the LPR utility: from the **Menu Installer Software Installation** dialog box on the driver CD, click **Network Software** → **Installation/Config** → **Oki LPR**.
- Click **Remote Print**, then click **Add Printer**.
- Select your printer model from the list, then either enter the **IP Address** manually, or click **Discover** and wait for the printer to be discovered.
- Click **OK**.

(continued on next page)

Windows Network Installation: Model C5400n Only

Software: TCP/IP (cont.)

The Web Driver Installer Utility

Use this utility to create a web page and set up the printer and groups of clients who have access to the printer. Once the new printer has been registered by the administrator, the utility automatically sends a email to each registered client.

The client then clicks the URL included in the email and is taken to the web page where they can select the printer, appropriate Windows Operating System, language and driver type (PCL or PS) and download the selected drivers to their system.

Server Computer Requirements

- Operating System:
 - Server 2003 computer
 - Windows XP Professional
 - Windows 2000
 - Windows NT Server 4.0 with Service Pack 6a
- Internet Explorer 5.5 or above
or
Netscape Navigator 6.0 or above
- Internet Information Services (IIS) 4 or above

Client Computer Requirements

- Windows OS
- Connected to TCP/IP network
- Internet Explorer 5.5 or above
or
Netscape Navigator 6.0 or above.
- Email access
- Oki LPR utility installed
[on driver CD, Network Software → Installation/Config → Oki LPR]

Install the Utility

- Insert the Drivers CD supplied with your printer in the CD-ROM drive. The CD will autorun. (If it doesn't, click **Start** → **Run** → **Browse**. Browse to your CD-ROM drive, double-click Install.exe, click **OK**.)
- The **License Agreement** appears. Click **Next** and select your language.
- Click **Network Software** → **Installation/Config** → **Web Driver Installer**.

- Follow the on-screen instructions to complete the installation.
- Close the **Menu Installer**.

Register Printer Drivers

Before using the Web Driver Installer, register any printers connected to the network.

- Click **Start** → **Programs** → **Okidata** → **Web Driver Installer** → **Register Driver Tool**.
- Select a printer from the list, then click the **Register/Update Driver** button.
- Enter the full path of the inf file for the printer driver. For the OKI C5400n printer:
 - inf file locations
 - \drivers\5400n\english\win2k_xp
 - \drivers\5400n\english\w9x
 - \drivers\5400n\english\nt4
 - inf file names
 - Postscript driver: Ok725ps.inf
 - PCL driver: Ok725.inf
- Click **OK**.

Launch the Utility

To launch the utility for setting up the network, click **Start** → **Programs** → **Okidata** → **Web Driver Installer**. The utility launches within your browser.

View the On-Line User's Manual

To view the manual, click **Manual** in the upper right corner of the **Web Driver Utility** window.

Web Driver Installer Functions

- Set up your Login Name (default = admin) and Password (default = password).
- Set up (register) and maintain groups
- Establish a specific client to maintain a group.
- Enable Auto-discovery (clients are informed of any newly added printers at preset intervals via email).

(continued on next page)

Windows Network Installation: Model C5400n Only

Software: TCP/IP (cont.)

Configuring the Print Server via the Embedded Web Page

Note: For more detailed information, see the OkiLAN 8100e SoftNIC User's Guide on the Manuals CD supplied with your printer.

- Activate your web browser (Netscape Navigator® version 4.0 or higher, or Microsoft® Internet Explorer® version 4.0 or higher), then enter the IP Address for the printer (this will be found on the *Network Information* configuration sheets generated when you press the Test button on the back of the printer).
- From this page you can
 - Enable/disable protocols.
 - Change the IP address, Subnet Mask and default Gateway to meet the requirements for your particular network environment.
- When done, save and submit your changes to the print server to make them permanent. When prompted, enter the following:
 - *User Name* = Root.
 - *Password* = Last 6 digits of the MAC Address (this will be found on the *Network Information* configuration sheets generated when you press the Test button on the back of the printer).

Activating the Optional Accessories

If your printer has an optional duplex unit, internal hard drive or second paper tray installed, you must enter the driver and activate it.

To Activate in the Postscript Emulation Driver:

- Click **Start** → **Settings** → **Printer**.
- Right click the Postscript emulation printer icon, then click **Properties**.

Windows 2000, XP and NT 4.0:

- Click the **Device Settings** tab.
- Scroll down to **Installable Options**.
- Click **Duplex**, then click **Installed**. Do the same thing for **Hard Disk**. If you have the optional paper tray installed, click **Available Tray** and select **2**.

Windows Me, 98 and 95:

- Click the **Device Options** tab.
- Select **Duplex Option Unit, Printer Hard Disk**, and select the optional second paper tray if installed.
- Click **OK**, then close the Printers dialog box.

To Activate in the PCL Driver:

- Click **Start** → **Settings** → **Printer**.
- Right click the PCL printer icon, then click **Properties**.
- Click the **Device Options** tab.
- Select **Duplex Option Unit, Printer Hard Disk**, and/or set **Available Tray** to **2**.
- Click **OK**, then close the Printers dialog box.

The On-Line Printer User's Guide

Note: In order to open the on-line User's Guide, you must have Acrobat Reader installed.

Insert the Manuals CD into your CD-ROM drive and follow the on-screen instructions to view or install the User's Guide.

Readme File

Please refer to the readme file on the Drivers CD supplied with your printer for the latest information on printer drivers.

Windows Network Installation: Model C5400n Only

Software: Novell

Note: *Installing a printer on a network is best handled by someone familiar with networks (such as a network Administrator).*

For more detailed information on the OkiLAN® 8100e SoftNIC internal print server, see the OkiLAN 8100e SoftNIC User's Guide on the Manuals CD supplied with your printer.

Included Network Software for Novell®

Your Driver CD includes the following network software:

Installation/Config

[Oki LPR: TCP/IP only]

Admin Mgr / Quick Setup Utility

Use this to set up the various computers on your network for use with the printer.

Storage Device Manager Utility

Load this utility to manage the hard disk drive (optional on most models) and the printer's built-in flash memory.

[Web Driver Installer Utility: TCP/IP only]

Administration Tools

PrintSuperVision

Provides access to network printer data for monitoring, reporting and managing networked printers.

Installs on either IIS or PWS Microsoft Web servers.

Job Accounting

Tracks network printer usage by job, user, or Account ID for internal reports and bill-back purposes.

Network Printer Status

Creates an additional STATUS tab in the printer Properties dialog box.

Admin Mgr / Quick Setup

- Insert the Drivers CD supplied with your printer into your CD-ROM drive. The CD will AutoPlay. (If it does not AutoPlay, click **Start** → **Run** → **Browse**. Browse to your CD-ROM drive and double-click **Install.exe**, then click **OK**.)
- The Software License Agreement appears. Click **Next** and select your language.
- Click **Network Software** → **Installation/Config** → **Admin Mgr / Quick Setup**.
- Select your language, then click the **OkiLAN Softnic Standard Setup** button.
- Follow the on-screen instructions to complete the installation.

Note: *You can either set up the network while running the utility off the CD, or you can choose to install the utility on your computer and then launch it from there (Start → Programs → Oki Setup Utility → AdminManager).*

Use the Utility to Install the Printer on a Novell Network

- *Novell Client for Windows must be loaded.*
- *The Admin Manager software must be running.*
- *You must be logged in to NDS.*
- When the **AdminManager** utility opens, it automatically discovers any printers on the network. If no printers appear, click the **Search** button (🔍) and wait for the utility to discover the printer.
- Select the discovered printer.
- Click **Setup** → **Create a NetWare Queue**.
- Select **NDS Mode**. Click **Next**.
- Select the container. Click **Next**.
- Select **Print Server Mode**. Click **Next**.
- Select or create a queue. Click **Execute**.

(continued on next page)

Windows Network Installation: Model C5400n Only

Software: Novell (cont.)

Activating the Optional Accessories

- If your printer has an optional duplex unit, internal hard drive or second paper tray installed, you must enter the driver and activate it.

To Activate in the Postscript Emulation Driver:

- Click **Start** → **Settings** → **Printer**.
- Right click the Postscript emulation printer icon, then click **Properties**.

Windows 2000, XP and NT 4.0:

- Click the **Device Settings** tab.
- Scroll down to **Installable Options**.
- Click **Duplex**, then click **Installed**. Do the same thing for **Hard Disk**. If you have the optional paper tray installed, click **Available Tray** and select **2**.

Windows Me, 98 and 95:

- Click the **Device Options** tab.
- Select **Duplex Option Unit, Printer Hard Disk**, and select the optional second paper tray if installed.
- Click **OK**, then close the Printers dialog box.

To Activate in the PCL Driver:

- Click **Start** → **Settings** → **Printer**.
- Right click the PCL printer icon, then click **Properties**.
- Click the **Device Options** tab.
- Select **Duplex Option Unit, Printer Hard Disk**, and/or set **Available Tray** to **2**.
- Click **OK**, then close the **Printers** dialog box.

The On-Line Printer User's Guide

Note: In order to open the on-line manual, you must have Acrobat Reader installed.

Insert the Manuals CD into your CD-ROM drive and follow the on-screen instructions to view or install the User's Guide.

Readme File

Please refer to the readme file on the Drivers CD supplied with your printer for the latest information on printer drivers.

Windows USB Port

Computer Connection

Note: *No USB interface cable is supplied with the printer.*

Use a USB cable that is compatible with USB specification 1.1 or 2.0.

- A USB interface will only operate using Windows 2000, Windows XP, Windows Me, and Windows 98. Windows 95 and NT 4.0 do not support USB.
- Printer operation is not assured if another USB compatible device is connected concurrently with it.
- If a USB hub is used and you encounter problems, connect the printer directly to the computer.
- Turn off the printer, then connect the USB cable to the computer.
- Connect the USB cable to the black USB port **(1)**—*not the plugged Ethernet port!*—on the printer.



Windows USB Port

Driver Installation, Windows XP

Install the Printer Driver

- Make sure the USB cable is connected to your printer and PC and your printer is turned **OFF**.
- Insert the Driver CD supplied with your printer into your CD-ROM drive. The CD will autorun. (If it doesn't, click **Start** → **Run** → **Browse**. Browse to your CD-ROM drive and double-click **Install.exe**, click **OK**.)
- The License Agreement appears. Click **Next**.
- Select your language.
- Click the **Printer Driver Installer** button.
- Click **Local printer**. Click **Next**.
- Select the **USB** port. Click **Next**.
- Model C5400**: Click **Next**.
Model C5400n: Select the emulation to install—the Postscript (PS) emulation is the default—then click **Next**.
- The printer driver installs.
- The **Connect cable** dialog box displays.
- Switch your printer **ON**.
- The **Add New Hardware** wizard starts. Click **Next**.
- Select “Search for the best driver for your device.” Click **Next**.
- Select CD-ROM drive. Clear other choices. Click **Next**.
- The USB driver is located. Click **Next**. Click **Finish**.
- Click **Finish**.

Note: *If you will be installing the second driver (Model C5400n only) or the utilities, leave the Menu Installer dialog box open.*

Print a Test Page

- Click **Start** → **Settings** → **Printers**.
- Right-click the printer icon.
- Click **Properties**.
- Click the **Print Test Page** button.

- Click **Yes** to confirm printing of the test page, then click **OK** and close the **Printers** dialog box.

Model C5400n Only: To Install the Second Driver as Well

- With the **Menu Installer Software Installation** dialog box open, click the **Printer Driver Installer** button.
- Select **Local printer**. Click **Next**.
- Select **LPT1** temporarily. Click **Next**.
- Select the emulation to install. Click **Next**.
- Follow the on-screen instructions to complete the installation.
- Click **Finish**.

Note: *If you will be installing the utilities, leave the Menu Installer dialog box open.*

When the installation is complete:

- Click **Start** → **Settings** → **Printers**.
- Right click the printer icon for the emulation you just installed, then click **Properties**.
- On the **Ports** tab, select **USB01 port** in the **Print to the following port** drop-down list.
- Click **OK**, then close the **Printers** dialog box.

When you're done installing drivers, skip to page 17 for:

- **Printer Software Utilities**
- **Activating the Optional Accessories**
- **Manuals**
- **Readme File**

Windows USB Port

Driver Installation, Windows 2000

Install the Printer Driver

- Make sure the USB cable is connected to your printer and PC and your printer is turned **OFF**.
- Insert the driver CD supplied with your printer into your CD-ROM drive. The CD will autorun. (If it doesn't, click **Start** → **Run** → **Browse**. Browse to your CD-ROM drive and double-click **Install.exe**, click **OK**.)
- The License Agreement appears. Click **Next**.
- Select your language.
- Click the **Printer Driver Installer** button.
- Click **Local printer**. Click **Next**.
- Select the **USB** port. Click **Next**.
- Printer model and emulation displays.
- Model C5400**: Click **Next**.
Model C5400n: Select the emulation to install—the Postscript (PS) emulation is the default—then click **Next**.
- The printer driver installs.
- If the **Digital Signature Not Found** dialog box appears, click **Yes**. Printer drivers are installed.
- The **Connect cable** dialog box displays.
- Click **Finish**.

Note: *If you will be installing the second driver (Model C5400n only) or the utilities, leave the Menu Installer dialog box open.*

Model C5400n Only: To Install the Second Driver as Well

- With the Menu Installer Software Installation dialog box still open, click the **Printer Driver Installer** button.
- Select **Local printer**. Click **Next**.
- Select **LPT1** temporarily. Click **Next**.
- Select the emulation to install. Click **Next**.
- Follow the on-screen instructions to complete the installation.
- Click **Finish**.

Note: *If you will be installing the utilities, leave the Menu Installer dialog box open*

When the installation is complete:

- Click **Start** → **Settings** → **Printers**.
- Right click the printer icon for the emulation you just installed, then click **Properties**.
- On the **Ports** tab, select **USB01 port** in the **Print to the following port** drop-down list.
- Click **OK**, then close the Printers dialog box.

Print a Test Page

- Switch your printer **ON**.
- Click **Start** → **Settings** → **Printers**.
- Right-click the **printer icon**.
- Click **Properties**.
- Click the **Print Test Page** button.
- Click **Yes** to confirm printing of the test page, then click **OK** and close the **Printers** dialog box.

When you're done installing drivers, skip to page 17 for:

- **Printer Software Utilities**
- **Activating the Optional Accessories**
- **Manuals**
- **Readme File**

Windows USB Port

Driver Installation, Windows Me

Install the Printer Driver

- Make sure the USB cable is connected to your printer and PC and your printer is turned **OFF**.
- Insert the driver CD supplied with your printer into your CD-ROM drive. The CD will autorun. (If it doesn't, click **Start** → **Run** → **Browse**. Browse to your CD-ROM drive and double-click **Install.exe**, click **OK**.)
- The License Agreement appears. Click **Next**.
- Select your language.
- Click the **Printer Driver Installer** button.
- Click **Local printer**. Click **Next**.
- Select the **USB** port. Click **Next**.
- Model C5400: Click **Next**.
Model C5400n: Select the emulation to install—the Postscript (PS) emulation is the default—then click **Next**.
- The printer driver installs.
- The **Connect cable** dialog box displays. Click **Finish**.
- Switch your printer **ON**.
- The **Add New Hardware** wizard starts. Click **Next**.
- Select “Specify the location of the driver.” Click **Next**.
- Select “Specify a location.” Clear removable media. Click **Browse**.
- Scroll down and click on your CD-ROM drive. Click **OK**.
- Click **Next**. The USB driver is located.
- Click **Next**. Click **Finish**.

Note: *If you will be installing the second driver (Model C5400n only) or the utilities, leave the Menu Installer dialog box open.*

Print a Test Page

- Click **Start** → **Settings** → **Printers**.
- Right-click the printer icon.
- Click **Properties**.
- Click the **Print Test Page** button.

- Click **Yes** to confirm printing of the test page, then click **OK** and close the **Printers** dialog box.

Model C5400n Only: To Install the Second Driver as Well

- With the Menu Installer Software Installation screen still open, click the **Printer Driver Installer** button.
- Select **Local printer**. Click **Next**.
- Select **LPT1** temporarily. Click **Next**.
- Select the emulation to install. Click **Next**.
- Follow the on-screen instructions to complete the installation.
- Click **Finish**.

Note: *If you will be installing the utilities, leave the Menu Installer dialog box open.*

When the installation is complete:

- Click **Start** → **Settings** → **Printers**.
- Right click the printer icon for the emulation you just installed, then click **Properties**.
- On the **Details** tab, select **OP1USB1** in the **Print to the following port** drop-down list.
- Click **OK**, then close the Printers dialog box.

When you're done installing drivers, skip to page 17 for:

- **Printer Software Utilities**
- **Activating the Optional Accessories**
- **Manuals**
- **Readme File**

Windows USB Port

Driver Installation, Windows 98

Install the Printer Driver

- Make sure the USB cable is connected to your printer and PC and your printer is turned **OFF**.
- Insert the driver CD supplied with your printer into your CD-ROM drive. The CD will autorun. (If it doesn't, click **Start** → **Run** → **Browse**. Browse to your CD-ROM drive and double-click **Install.exe**, click **OK**.)
- The License Agreement appears. Click **Next**.
- Select your language.
- Click the **Printer Driver Installer** button.
- Click **Local printer**. Click **Next**.
- Select the **USB** port. Click **Next**.
- Model C5400**: Click **Next**.
Model C5400n: Select the emulation to install—the Postscript (PS) emulation is the default—then click **Next**.
- The printer driver installs.
- The **Connect cable** dialog box displays. Click **Finish**.
- Switch your printer **ON**.
- The **Add New Hardware** wizard starts. Click **Next**.
- Select “Search for the best driver for your device.” Click **Next**.
- Select CD-ROM drive. Clear other choices. Click **Next**.
- The USB driver is located. Click **Next**. Click **Finish**.

Note: *If you will be installing the second driver (Model C5400n only) or the utilities, leave the Menu Installer dialog box open.*

Print a Test Page

- Click **Start** → **Settings** → **Printers**.
- Right-click the printer icon.
- Click **Properties**.
- Click the **Print Test Page** button.
- Click **Yes** to confirm printing of the test page, then click **OK** and close the **Printers** dialog box.

Model C5400n Only: To Install the Second Driver as Well

- With the Menu Installer Software Installation screen still open, click the **Printer Driver Installer** button.
- Select **Local printer**. Click **Next**.
- Select **LPT1** temporarily. Click **Next**.
- Select the emulation to install. Click **Next**.
- Follow the on-screen instructions to complete the installation.
- Click **Finish**.

Note: *If you will be installing the utilities, leave the Menu Installer dialog box open.*

When the installation is complete:

- Click **Start** → **Settings** → **Printers**.
- Right click the printer icon for the emulation you just installed, then click **Properties**.
- On the **Details** tab, select **OP1USB1** in the **Print to the following port** drop-down list.
- Click **OK**, then close the **Printers** dialog box.

When you're done installing drivers, skip to page 17 for:

- **Printer Software Utilities**
- **Activating the Optional Accessories**
- **Manuals**
- **Readme File**

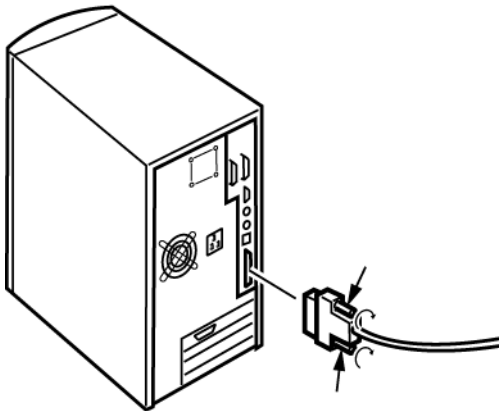
Windows Parallel Port

Computer Connection

- Turn off both the computer and the printer.
- Attach a standard IEEE-1284 parallel cable (not supplied) to the parallel port (1) on the printer, securing it with the spring clips.



- Attach the other end to the parallel port on the computer and secure it in place with the screws.



Windows Parallel Port Driver Installation

Drivers Supplied

Drivers are supplied for the following Windows systems:

- Windows XP, 2000
- Windows Me, 98, 95B
- Windows NT 4.0

Install the Printer Driver

- Be sure the cable is connected and your printer is powered **OFF**.
- Insert the Printer Driver Installation CD into your CD-ROM drive. The CD will AutoPlay. (If it doesn't, click **Start** → **Run** → **Browse**. Browse to your CD-ROM drive and double-click Install.exe, then click **OK**.)
- The License Agreement appears. Click **Next**.
- Select your language.
- Click the **Printer Driver Installer** button.
- Select **Local printer**. Click **Next**.
- Select the **LPT1** port. Click **Next**.
- Model C5400**: Click **Next**.
Model C5400n: Select the emulation to install—the Postscript (PS) emulation is the default—then click **Next**.
- Follow the on-screen instructions to complete the installation.
- Click **Finish**.

Note: *If you will be installing the second driver (Model C5400n only) or the utilities, leave the Menu Installer dialog box open.*

Model C5400n Only: To Install the Second Driver as Well

- With the Menu Installer Software Installation dialog box still open, click the **Printer Driver Installer** button.
- Follow the on-screen instructions to install the second driver.

Note: *When prompted to select a port, select LPT1.*

- Click **Finish**.

Note: *If you will be installing the utilities, leave the Menu Installer dialog box open.*

Print a Test Page

- Turn printer power **ON**.
- Click **Start** → **Settings** → **Printers**.
- Right-click the **printer icon**.
- Click **Properties**.
- Click the **Print Test Page** button.
- Click **Yes** to confirm printing of the test page, then click **OK** and close the **Printers** dialog box.

When you're done installing drivers, skip to page 17 for:

- **Printer Software Utilities**
- **Activating the Optional Accessories**
- **Manuals**
- **Readme File**

Windows Software Installation

Utilities, Activating Accessories, etc.

Color Print Utilities

- **Color Swatch Utility:** Prints swatches of color samples with RGB values. Enter the corresponding RGB value in your software application to print a color matching the associated swatch.
- **Color Correct Utility:** Use to compensate for nonlinear color characteristics of the printer or the pages being printed. Gamma curve adjustments can also be used to change contrast and brightness.

Installing the Utilities

To install the software utilities, click the **Productivity Software** button in the Menu Installer Software Installation dialog box, then select and install the utilities you want following the on-screen instructions.

To access the utility programs from your desktop, click **Start → Programs → OkiData**.

Activating the Optional Accessories

If your printer has an optional duplex unit, internal hard drive or second paper tray installed, you must enter the driver and activate it.

To Activate in the PCL Driver:

- Click **Start → Settings → Printer**.
- Right click the PCL printer icon, then click **Properties**.
- Click the **Device Option** tab.
- Select **Duplex Option Unit, Printer Hard Disk**, and/or set **Available Tray** to **2**.
- Click **OK**, then close the Printers dialog box.

To Activate in the Postscript Emulation Driver (Model C5400n Only):

- Click **Start → Settings → Printer**.
- Right click the Postscript emulation printer icon, then click **Properties**.

Windows 2000, XP and NT 4.0:

- Click the **Device Settings** tab.
- Scroll down to **Installable Options**.
- Click **Duplex**, then click **Installed**. Do the same thing for **Hard Disk**. If you have the optional paper tray installed, click **Available Tray** and select **2**.

Windows Me, 98 and 95:

- Click the **Device Options** tab.
- Under **Installable options**, select **Duplex Option Unit, Printer Hard Disk**, and select the optional second paper tray if installed.
- Click **OK**, then close the Printers dialog box.

On-Line Manual

Note: In order to open the on-line User's Guide, you must have Acrobat Reader installed.

Insert the Manuals CD into your CD-ROM drive and follow the on-screen instructions to view or install the User's Guide.

Readme File

Please refer to the readme file on the Drivers CD supplied with your printer for the latest information on printer drivers.

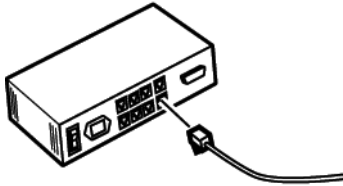
Macintosh Installation: Model C5400n Only

Network Connection

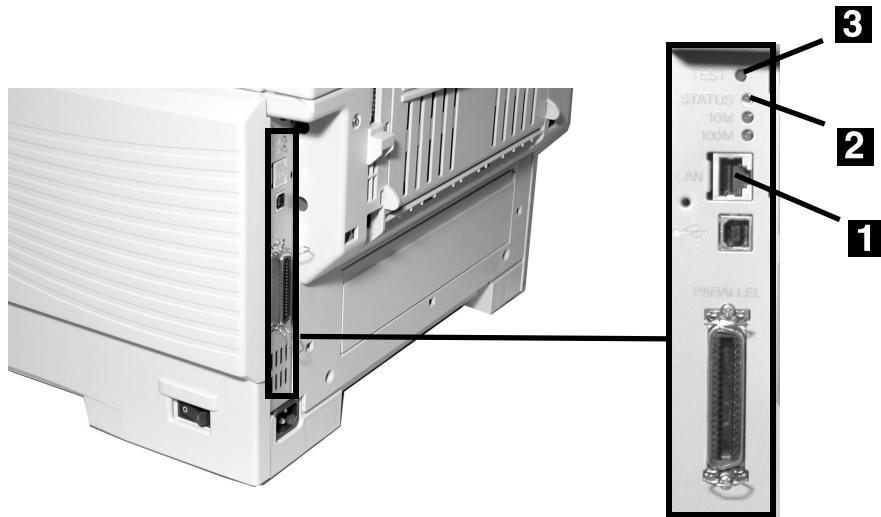
Notes: Requires Mac OS 9.1 or above, running on a Macintosh® computer with EtherTalk interface.

The Ethernet cable is not supplied with the printer. Use an Ethernet cable with RJ45 connectors at either end.

- Turn off the printer.
- Connect your Ethernet cable to the network port on the hub or switch.



- Remove the plastic cap from the Ethernet port (1) on the printer.
- Connect the other end of the cable to the port (1).
- Turn on the printer and wait for the print server status light (2) to stop blinking.
- Press the Test button (3) on the print server. The *Network Information* configuration sheets print. Keep these sheets handy: they contain information you need to set up the printer on your network.

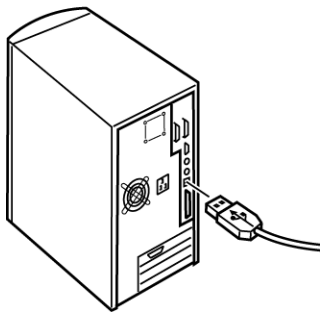


Macintosh Installation: Model C5400n Only

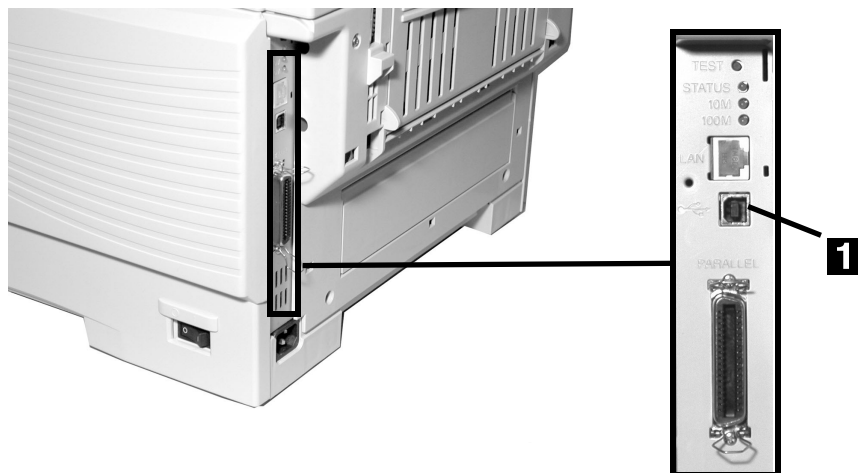
USB Connection

Note: No USB interface cable is supplied with the printer. Use a cable that is compatible with USB specification 1.1 or 2.0.

- Requires Mac OS 9.1 or higher
- Printer operation is not assured if another USB compatible device is connected concurrently with it.
- If a USB hub is used and you encounter problems, connect the printer directly to the computer.
- Depending upon the size of the document, if the memory setting for the print monitor is low, you may not be able to print in the background. To correct for this, increase the memory setting for the print monitor.
- Depending on the model you have, you may need to install updates to the operating system in order to use USB: e.g., iMac Update 1.0, iMac Update 1.1, iMac Firmware Update, etc. For further information, contact Apple Computers.
- Turn off the computer and the printer.
- Connect the USB cable to the USB port on the computer.



- Connect the other end of the cable to the black USB Port (1)—*not the plugged Ethernet port!*—on the printer.

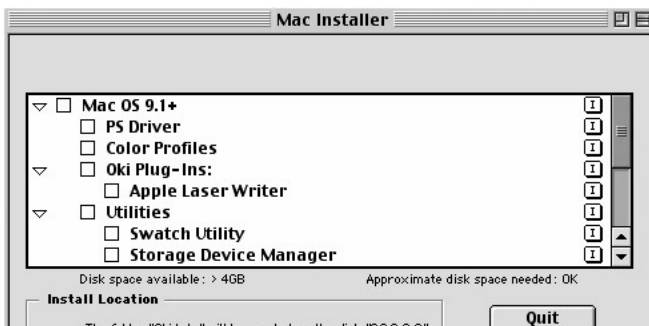


Macintosh Installation: Model C5400n Only

Software, OS 9.1+

Install the Driver

- Turn on the printer, then turn on the computer.
- Place the Drivers CD supplied with your printer into the CD-ROM drive.
- Double-click the CD icon that appears on the desktop.
- Open the MAC folder, then open the PSDRV folder.
- Open the folder for your language.
- Double-click the MAC Installer icon, then click **Continue** and accept the License agreement.
- Select **Mac OS 9.1+** from the drop-down box located in the left corner. This will install printer drivers, utilities, and plug-ins.



Notes

To customize the installation, click the arrow icon, then select the specific items you wish to install.

For more information on utilities, see the Utilities section of the on-line Mac Technical Reference on the Manuals CD supplied with your printer.

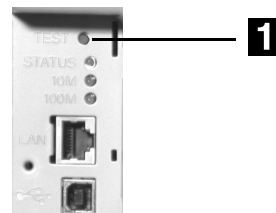
- Click **Install**.
- When the installation is complete, click **Quit**.

Create the Desktop Printer

Networks

- Activate **Chooser** from the Apple menu, then wait for the network printer to appear.
- Select the **LaserWriter8** icon and highlight the printer name (print server ID#).
- Click **Create**.
- Close **Chooser**.

Note: If you need to verify the printer name, press the print server test button (1) to print the Network Information configuration sheets.



USB

- Navigate to your local hard drive → **Application (Mac OS 9)** → **Utilities**.
- Double-click the **Desktop Printer Utility** icon.
- Highlight **Printer (USB)** under **Create Desktop**.
- In the drop-down box, select **LaserWriter 8** and click **OK**.
- Under **Postscript Printer Description (PPD)** file, click **Change**.
- Make sure the **Printer Descriptions** folder is selected in the drop-down box.
- Highlight your printer model, then click **Select**.
- Under **USB Printer Selection**, click **Change**.
- Highlight the printer model you have, then click **OK**.
- Click **Create**. The printer icon appears on the desktop.
- Click **Save**.

(continued on next page)

Macintosh Installation: Model C5400n Only

Software, OS 9.1+ (cont.)

Accessing Advanced Features

- Select **File** on the desktop menu.
- Click **Print Desktop** from the drop down menu.
- Select **Plugin Preferences** from the pull-down menu.
- Check **Print Time Filters, Job Accounting, Job Type** and **Job TypExec Mod.**
- Click **Save Settings**. Click **OK**.

On-Line Manuals

Two on-line manuals are provided on the Manuals CD supplied with your printer:

- **User's Guide**
Includes media recommendations, loading print media, information on using the printer menu, troubleshooting, specifications, etc.
- **Mac Technical Reference**
Includes information on color matching and on using the printer's features and utilities.

Requirements

- Adobe® Acrobat® Reader is required to view the manuals.

To Load the Manuals

- Insert the Manuals CD into your CD-ROM drive.
- Double-click the CD icon which appears on the desktop.
- Either double-click the pdf files to view them directly from the CD or drag them to the desktop.

Readme File

For the latest printer driver information, see the Readme file on the Drivers CD supplied with your printer.

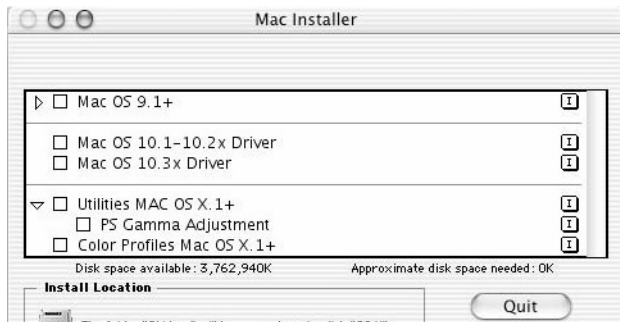
Macintosh Installation: Model C5400n Only

Software, OS 10.1 and higher

Install the Driver

Note: *Be sure to switch off antivirus software before installing a printer driver.*

- Turn on the printer, then turn on the computer.
- Place the Drivers CD supplied with the printer in the CD-ROM drive.
- Double-click the CD icon that appears on the desktop.
- Open the MAC folder.
- Open the PSDRV folder.
- Open the folder for your language.
- Double-click the **Mac Installer** icon, then click **Continue** and accept the License agreement.
- Select the appropriate MAC OS 10 driver from the drop-down menu located in the left corner, then select **Utilities MAC OS X.1+** and **Color Profiles MAC OS X.1+**.



- Click **Install**.
- When the installation is complete, click **Quit**.

Adding the Printer

- Mac 10.1-10.2:
Run the Print Center (**Local HD** → **Applications** → **Utilities** → **Print Center**).
- Mac 10.3+:
Run the Printer Setup Utility (**Local HD** → **Applications** → **Utilities** → **Printer Setup Utility**).

- Click **Add**.
- Select **IP Printing** from the drop down menu.

Note: *If you are using USB select USB, then select your model from the list and click Add. Disregard the following steps.*

- Enter the printer's IP address.
- From the **Printer Model** drop down menu, select the correct model for your printer. Click **Add**.
- Quit **Print Center/Printer Setup Utility**.

On-Line Manuals

See page 21 for instructions to load the manuals.

Readme File

For the latest printer driver information, see the Readme file on the Drivers CD supplied with your printer.

