

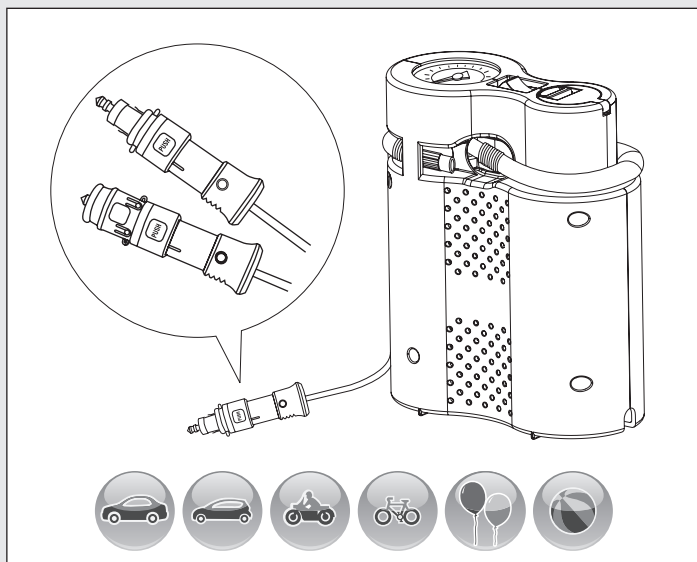
# *air*MAN<sup>®</sup> **COMPACT** **AIR COMPRESSOR**

12V Multi-Purpose DIN Plug



USER MANUAL

ID.NO.52-074



**BEFORE USING AIRMAN, CAREFULLY READ THE USER MANUAL AND INDIVIDUAL PRODUCT LABEL INSTRUCTIONS. FOR FUTURE REFERENCE, KEEP PRODUCT BOX, USER MANUAL AND RECIPE IN A SAFE PLACE.**

The AirMan Compact Air Compressor is a user-friendly, high pressure air compressor designed with functions to facilitate a safe and cost-conscious journey. With the AirMan Compact Air Compressor, you have all the tools you need to take proper care of your tires.

Owing to the 12V multi-purpose DIN plug, your new compressor can be used for both cars and motorbikes. By default, the power plug fits into your vehicle's power outlet. However, when you pull back the red collar, it works flawlessly with the DIN socket.

For safety reasons it's important that your tires are properly inflated. Built into the product is a pressure gauge designed for accurate reading of the tire pressure. When you maintain the recommended tire pressure, you improve safety, save money on fuel, experience a safer and more pleasant ride, and maximize tire life at the same time. Regular tire pressure maintenance is made easy with the AirMan Compact Air Compressor.

As a bonus, the AirMan Compact Air Compressor comes with three multi-purpose adapters for bicycle tires, sport balls, and balloons.



## HIGH PRESSURE APPLICATIONS



## PERFORMANCE

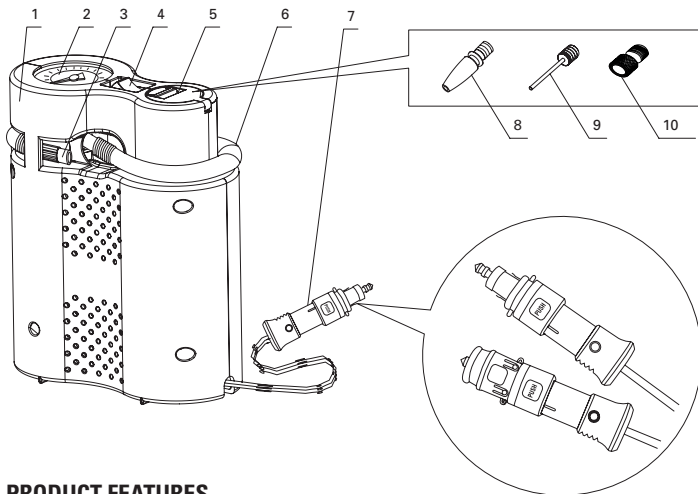
**Bicycle tire (average city bike size): 4 bar in 1 minute**

**Motorcycle tire (15 litres): 2.5 bar in 4 minutes**

**Small sized car tire (25 litres): 2.5 bar in 6.5 minutes**

**Medium sized car tire (36 litres): 2.5 bar in 8.5 minutes**

## COMPACT AIR COMPRESSOR



### PRODUCT FEATURES

1. High pressure air compressor
2. Built-in pressure gauge
3. Thread connector
4. On (I)/off (O) switch
5. Adapter storage
6. Pressure hose
7. 12V multi-purpose DIN plug with 3.4m cord
8. Balloon adapter
9. Ball adapter
10. Bicycle adapter

## INSTRUCTIONS FOR EVERYDAY MAINTENANCE

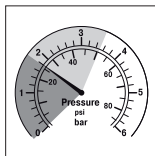
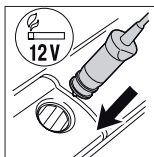
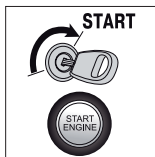
Tire pressure is nothing less but crucial to safety: without regular maintenance, tire pressure drops by approx. 0.1–0.2 bar (1.45-2.90 PSI) per month, reducing grip and increasing the risk of punctures.

Therefore, we recommend that you check your tire pressure as often as possible, and at least every two weeks. Check the tire pressure when the tires are cold, and inflate them in accordance with the recommended tire pressure for your specific vehicle. Recommended tire pressure is always listed in your vehicle's user manual.

With the AirMan Compact Air Compressor, tire inflation becomes a breeze:

1. Start the engine, and leave your vehicle running during operation to save battery power.

2. Connect the 12V multi-purpose DIN plug to the power socket of the vehicle. By default the power plug fits into the power outlet of your vehicle. However, when you pull back the red collar, it works flawlessly with the DIN socket too.
3. Always position your tire valve at 6 o'clock. Otherwise, the short air hose cannot reach the tire valve from the ground.
4. Remove the cap from the tire valve.
5. Screw the compressor hose firmly onto the tire valve.
6. Press start (I) on the compressor.
7. Continue to inflate the tire until recommended tire pressure is reached (max. 10 minutes' usage at a time). Then press stop (O) on the compressor.
8. Do not continue your journey if minimum tire pressure cannot be reached.



## MULTI-PURPOSE ADAPTERS

As a bonus, the AirMan Compact Air Compressor comes with three multi-purpose adapters for bicycle tires, sport balls, and balloons. Before using the adapters, make sure to check the recommended inflation pressure of the object in question.

The following procedure applies to all three types of adapters.

1. Start the engine, and leave your vehicle running during operation to save battery power.
2. Select the adapter from the cabinet on top of the compressor.

3. Mount the adapter of your choice on the tip of the air hose.
4. Connect the hose to the valve of the object you want to inflate.
5. Switch on the compressor (I).
6. Inflate until desired pressure is reached, then switch off the compressor (0).



**Balloon  
adapter**



**Sport ball  
adapter**



**Bicycle  
adapter**

## SAFETY NOTES

- Carefully read the user manual and the individual product label instructions before using AirMan.
- Only use AirMan between -10 and +60° C (-50 and 140° F).
- Leave your vehicle running while operating the compressor. Long operating time can drain the battery.
- Never let your car engine run in poorly ventilated areas.
- Never leave compressor unattended while in operation.
- Keep compressor out of reach of children.
- Always position your tire valve at 6 o'clock. Otherwise, the short air hose cannot reach the tire valve from the ground.
- Beware: Hose can turn hot while operating.
- The compressor turns warm during operation. Avoid overheating. Max 10 minutes operating time. The compressor turns warm. After every 10 minutes, allow the compressor to cool for a minimum of 10 minutes.
- If the compressor emits abnormal sounds or overheats, turn it off immediately, and let it cool for about 30 minutes.
- Improper or unintended use can damage the compressor.



ActiveTools  
[www.my-airman.com](http://www.my-airman.com)

Made in China.