



SafeFile Linux Client User Manual

Software version 4.0.x
For Linux distributions



January 2012

Version1.0

Disclaimer

This document is compiled with the greatest possible care. However, errors might have been introduced caused by human mistakes or by other means. No rights can be derived from possible inaccuracies or errors as this is not a contractual agreement, but for information only. All rights reserved; nothing may be duplicated or reproduced without written permission of Sterling.



1. Contents

1. Contents.....	2
2. Product Information	4
2.1. System Requirements	4
3. Features	5
4. Setup.....	6
4.1. Software installation	6
4.2. Registration Wizard	7
5. SafeFile Backup Client main interface.....	10
5.1. Home	11
5.2. Online backup	11
5.2.1. Create or change backup task	11
5.2.2. General	12
5.2.3. Schedule	14
5.2.4. Set Retention.....	14
5.2.5. Pre/Post-scripts	15
5.2.6. File System.....	16
5.2.7. Filter	16
5.2.8. MySQL	17
5.2.9. Backup progress.....	18
5.3. Offline backup	19
5.3.1. General	19
5.4. Restore	20
5.4.1. View backed up data	20
5.4.2. Restore latest versions of data.....	20
5.4.3. Restoring older versions of data.....	21
5.4.4. Restore process	22
5.4.5. Deleting data from Backup Server.....	22
5.4.6. Reset Retention.....	23



5.5. Options	24
5.5.1. General	24
5.5.2. Backup and Restore	25
5.5.3. Advanced	25
5.5.4. Plugins	27
5.6. MySQL backup.....	27
5.7. Report details	28
5.7.1. Reports.....	28
5.7.2. Logs	29
5.8. Support	30
5.9. About	31



2. Product Information

Product: SafeFile Backup Client for Linux
Version: 4.0.X.x

2.1. System Requirements

Operating System	▶ Linux (RedHat, SuSE, Debian and Debian based systems such as Ubuntu)
Hardware Resources	<ul style="list-style-type: none">▶ PC with 1gigahertz (GHz) or higher processor clock speed recommended▶ 1,5 GB memory▶ 25 MB of disk space▶ Internet connection (e.g. ADSL, SDSL)
Required software	▶ Java 1.6platform or higher is required

Note: A separate manual is available for the SafeFile Backup Client for Microsoft Windows and Mac OS X.

Note: There are two types of accounts: Workstation (Home) and Server (Professional). Only the Server account is available for use with the Linux client.



3. Features

The SafeFile Backup Client has several features. It supports different kinds of data. It can backup normal data but also specific data.

- ▶ You can make one or more scheduled tasks to backup data automatically (e.g. daily, weekly).
- ▶ The SafeFile Backup Client fully supports all Linux file formats and user rights.

The SafeFile Backup Service also includes a Management Console, which can be accessed through an Internet browser. It has several functions:

- ▶ Change user settings (e.g. password).
- ▶ Overview of your backups through logs and reports.



4. Setup

4.1. Software installation

Currently there is no package available for Linux. Setup of the SafeFile Backup Client is performed using the following instructions:

- ▶ Copy the SafeFile Backup Client archive (OnlineBackupClient-4.0.X.x.tar.gz) to your system and place it in your \$HOME directory.
- ▶ create a new directory:
`mkdir $HOME/OnlineBackupClient`
- ▶ change to this directory and extract the archive:
`cd $HOME/OnlineBackupClient`
`tarxzf $HOME/OnlineBackupClient-4.0.X.x.x.tar.gz`
- ▶ This will create the two following folders:
 - `Server/` This folder contains the SafeFile Backup Service component.
 - `Client/` This folder contains the user-interface application for the SafeFile Backup Client.
 - `CommandLine` This folder contains the CommandLine client part of the Backup Client.
- ▶ Start the SafeFile Backup Service:
`cd $HOME/OnlineBackupClient/Server`
`./server-with-logging.sh`
This will start the SafeFile Backup Client Service and place it in the background.
Here you will be asked to enter your (sudo) password, so the SafeFile Backup Client can access all the files.
- ▶ Start the SafeFile Backup Client User Interface:
`cd $HOME/OnlineBackupClient/Client`
`./client-with-logging.sh`

This will start the SafeFile Backup Client User Interface and, if this is a first-time installation, present you with the Registration Wizard.

Note: After the setup, you can adjust the language of the SafeFile Backup Client.



4.2. Registration Wizard

When the SafeFile Backup Client is started for the first time, it will start with the Registration Wizard. The Registration Wizard guides you to fill in the account information and encryption key. With the encryption key your data will be encrypted and decrypted.

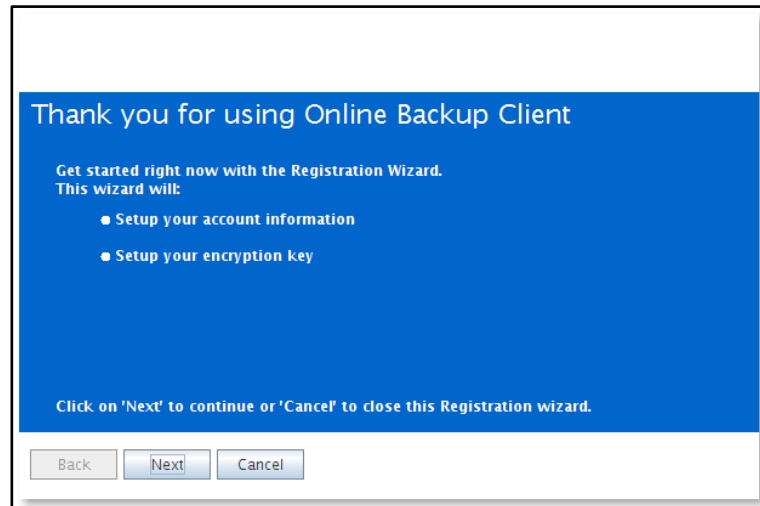


Figure 1: Registration wizard

You need to fill in the address of the Backup Server to connect to; your SafeFile Backup Provider will provide you with this address. You can test the address by clicking on 'Test'.

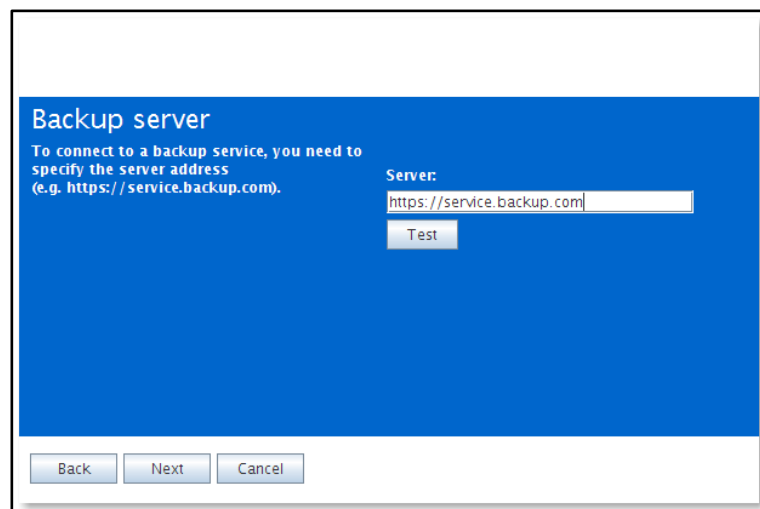


Figure 2: Backup Server Address

You need to fill in the username and password that you created or obtained from your SafeFile Backup Provider.

Note: You also have to fill in a Computer name. This which will be registered at the Backup Server to store all files.

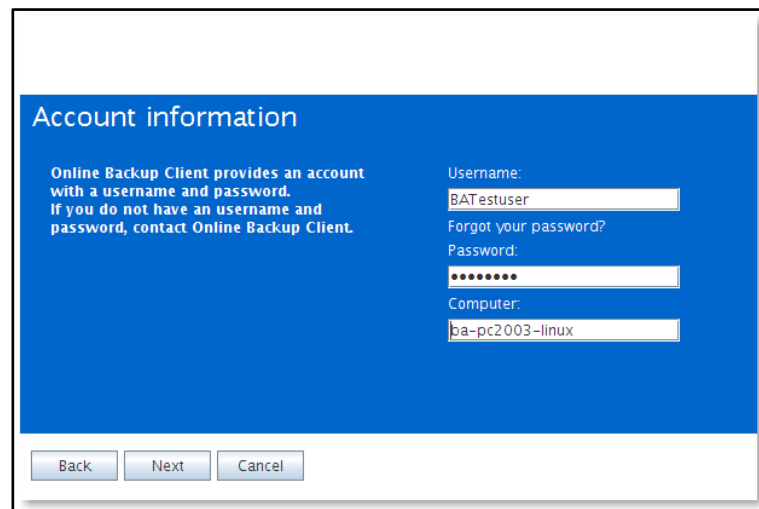


Figure 3: User account

Note: If you do not remember your password you can click on the link below the Username text field. A reminder will then be sent to your registered email address.

Note: If there is a problem with the username and password, the SafeFile Backup Client will show a prompt that signing in is not possible. There can be several reasons for this to occur:

- ▶ The username and/or password does not exist or is incorrect.
- ▶ The time on the client machine differs too much from the real time (more than 24 hours).
- ▶ The SafeFile Backup Client cannot access the online services while port 443 (SSL) is blocked by a firewall on the network.

The next wizard page will ask you to set an encryption key. The purpose of this key is to encrypt all files before transferring them to the Backup Server and decrypt the files from the Backup Server when restoring them.



Encryption key

To secure your files, you must specify an encryption key. This is an extra password to encrypt and decrypt your data. The Encryption key should be more than 6 characters and less than 20.

Fill in your Encryption Key:
.....

Confirm your Encryption Key:
.....

Encryption key reminder:
EncryptionKey

!! Please remember this key carefully, since no data can be restored when the key is missing !!

Back Next Cancel

Figure 4: Encryption Key

You must type an encryption key and then confirm this key. You can only set the encryption key once. After setting the encryption key it cannot be changed. If you forget the encryption key, the data encrypted with this key cannot be accessed anymore. Please write down the encryption key in a safe place.

IMPORTANT: This key is unique and can only be chosen once and cannot be changed afterwards. Treat this key with great care, since it is required to restore your files after a system crash.

Note: It is possible to store a reminder which can be sent to your personal email address. In this wizard the field to enter the reminder will change into a link: 'Forgot your encryption key?'

Congratulations!

You have finished the Registration Wizard!

To change any steps click 'Back', otherwise click 'Finish'.

Back Finish Cancel

Figure 5: End of RegistrationWizard



The wizard is now finished.

5. SafeFile Backup Client main interface

This is the main interface of the SafeFile Backup Client. Several components are displayed in the figure below:

- ▶ Navigation panel
- ▶ Account Information
- ▶ Main panel (e.g. Home)

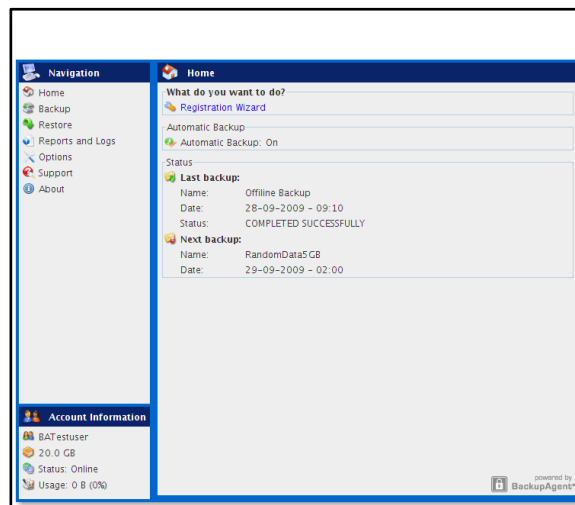


Figure 6: SafeFile Backup Client main interface

Navigation panel

The Navigation panel is the main navigation through the SafeFile Backup Client. The options are:

- ▶ Home: Start View
- ▶ Backup: Select local data for a backup
- ▶ Restore: Select remote data for a restore
- ▶ Reports and Logs: View information on executed backups
- ▶ Options: Configure backup tasks
- ▶ Support: View contact information for support
- ▶ About: Additional information about the SafeFile Backup Client

Account Information

Shows account details: account name, storage space, status and usage of storage space.



Main Panel

The main panel is the working space of the SafeFile Backup Client. Depending on what you want to do, this panel will show the necessary views.

5.1. Home

When you start the SafeFile Backup Client it will show the SafeFile Backup Client Home view. This view shows the status of the last and the next backup task.



Figure 7: Status of the last and next backup

5.2. Online backup

You can create an online backup task by clicking on "Backup" in the "Navigation" panel.

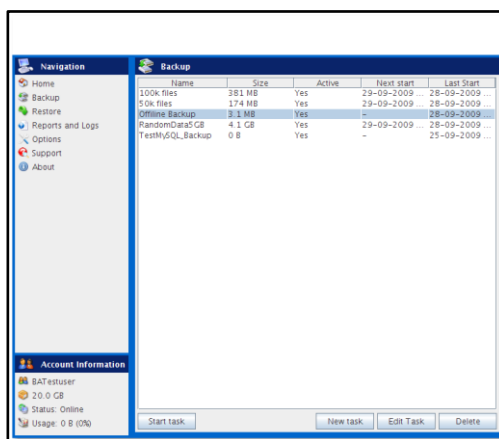


Figure 8: Backup

5.2.1. Create or change backup task

To create or change a backup task:

Create task

- Click on 'New Task' to create a new backup task.



- ▶ The Task Properties will open, and you can configure:
 - General (change name of backup task)
 - Schedule
 - Pre/Post scripts
 - File System
 - MySQL

Change task

- ▶ Select the task in the tree view, and click on 'Edit Task'.
- ▶ The Task Properties will open, and you can configure:
 - General (change name of backup task)
 - Schedule
 - Pre/Post scripts
 - File System
 - MySQL

5.2.2. General

The 'General' tab gives you a summary of the backup task. You can change the name of the backup task in this screen.

This is also the place where you can decide between an Online backup and an Offline backup.

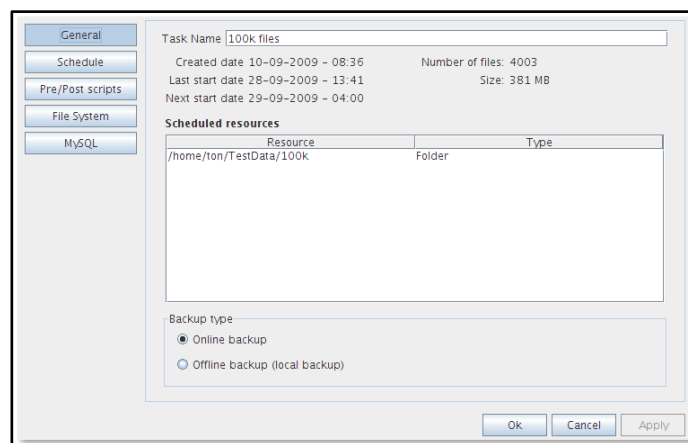


Figure 9: General view

Task Name

You can give the backup task a name.

Online Backup

An online backup will be created to backup data to the backup service.



Offline Backup (local backup)

This is intended for the seed backup for a customer. This creates a .zip file which can be moved to the SafeFile server and extracted there for the initial backup.

5.2.3. Schedule

You can set a schedule for the backup task in the 'Scheduletab' in the Task properties.

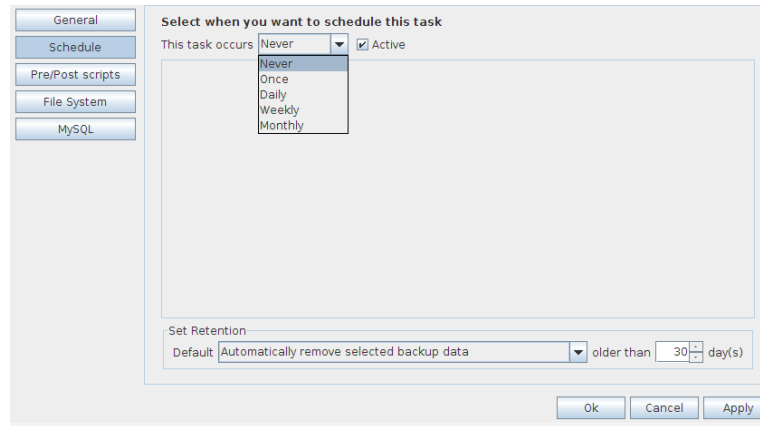


Figure 10: Set a schedule

The following schedule options are possible:

- ▶ **Never** Performs a backup only if you manually start the task.
- ▶ **Once:** Performs a backup once at the time that is inserted.
- ▶ **Daily:** Performs a backup daily at the time that is inserted.
- ▶ **Weekly:** Use this option to select which time and day(s) the backup must be performed.
- ▶ **Monthly:** Use this option to select which part of the month and day of the week the backup must be performed.

By checking 'Active', the backup task will be performed automatically on the scheduled times.

Note: If you select a task in the view "Backup", and click on 'Start task', the backup task will be performed immediately.

5.2.4. Set Retention

Retention allows you to set the number of days your backup data will be kept before it is removed. Data will be removed after set number of days in the following situations:

- ▶ If an existing full backup is replaced by a new full backup
Example: A full backup takes place when data is backed up for the first time, or when the difference in data is more than 50%. If a new full backup is made, the old full backup will be automatically removed after the set number of days.



- ▶ If the task is no longer active for that period of time
Example: If you set retention to 7 days and stop the OnlineBackupService or shut down your computer for that period of time, the backup data will be automatically removed. The retention time will only become active the second time you run the backup task.
- ▶ If the data is no longer located at the original location
Example: If you made a backup of certain folder and you remove, rename or replace that folder on your computer, the backup of the folder will be deleted after set number of days.

You can also choose to not remove the selected backup data, in which case all backups of the data will be kept.

5.2.5. Pre/Post-scripts

Pre-Script

A Pre-Script is an advanced option to run certain operations before starting the backup task. You can simply browse to a command or shell scripts (e.g. /home/script.sh) which will be executed prior to the start of the backup task.

Continue if Pre-Script fails

When checked, the backup will be performed, even if the pre-script did not run properly.

Post-Script

A Post-Script is an advanced option to run certain operations after a backup task has run. You can simply browse to a command or shell script (e.g. /home/script.sh) which will be executed after the backup task is completed.

User

This field indicates the user that is used to execute the script.

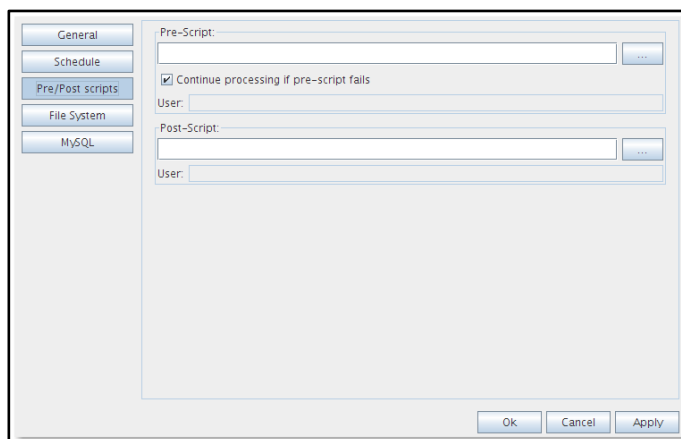
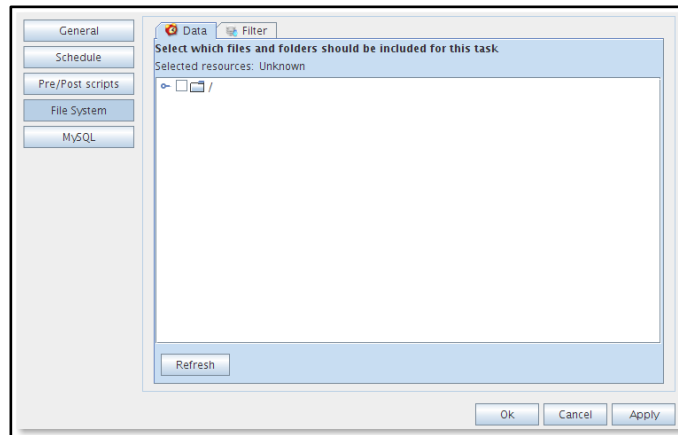


Figure 11: Pre/Post Scripts

5.2.6. File System

You can select data to backup in the 'File System' tab in the Task properties. You can easily expand and collapse the branches of the tree, by clicking the signs displayed at the left. All items are displayed with their type.

**Figure 12: Select backup data**

When a folder is selected for backup, underlying files and folders are automatically selected, unless explicitly deselected.

Note: If a folder is checked with a grey background only a subset of this folder is part of the backup set.

Note: A light grey square in front of a file or folder means that it is not possible to adopt that item in the backup set.

5.2.7. Filter

You can add file filters or folder filters that are excluded or included in the backup task. You can also choose to include hidden files by checking the checkbox.

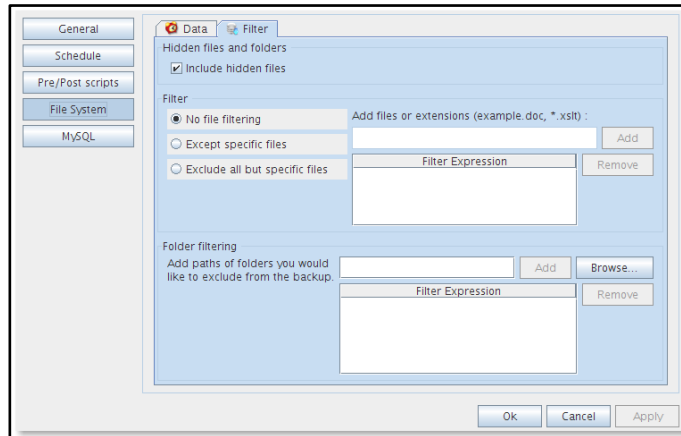


Figure 13: The filter screen while making a backup

The various filter options are:

- ▶ No file filtering (default)
- ▶ Filter out files on file name/extension ('Except specific files')
- ▶ Filter out all files except with certain file name/extension ('Exclude all but specific files')
- ▶ Filter out folders by path pattern (e.g. Temp, Cookies, etc).

5.2.8. MySQL

Instead of a file backup you can select to make a MySQL backup.

Open the 'MySQL-tab' and you can see the MySQL backup plugin with the available servers and databases. Here you can select a database or even a table for the backup.

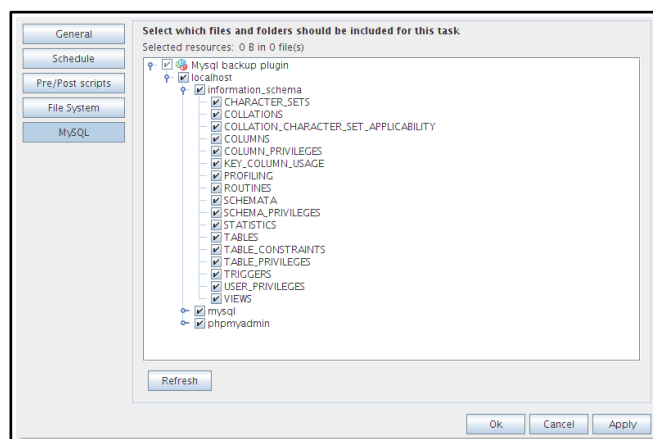


Figure 14: MySQL backup plugin



5.2.9. Backup progress

The backup process can be monitored by clicking on 'Details' at the bottom of the application during the process of a backup (the details screen will pop up automatically when a backup task is initiated).

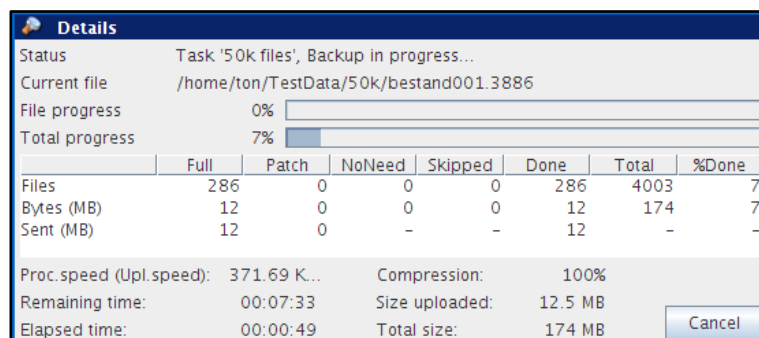


Figure 15: The detail screen while making a backup

The details regarding the backup of data are:

Progress information

- ▶ File progress: The progress of the backup of the indicated file
- ▶ Total progress: The progress of the total backup task

In the table (the amount of files, the amount of selected MBs and the amount of sent MBs)

- ▶ Full: Fully backed up files, which have not been backed up before
- ▶ Patch: Patched backed up files (incremental backups)
- ▶ NoNeed: Unchanged files (unchanged compared to the last backup)
- ▶ Skipped: Skipped files (details in the logs (explained later))
- ▶ Done: The total amount of processed data
- ▶ Total: The total amount of selected data
- ▶ %Done: The percentage of processed data

Other information

- ▶ Avg.upl.speed: The average upload speed
- ▶ Remaining time: The estimated remaining time
- ▶ Elapsed time: The elapsed time
- ▶ Compression: The average compression rate of the backed up data
- ▶ Size uploaded: The size of the uploaded data
- ▶ Total size: The total size of the selected data



5.3. Offline backup

You can create an offline backup task by clicking on 'Backup' in the 'Navigation' panel.

Task Name

You can give the backup task a name.

Backup type

Set the backup type to 'Offline backup' and click on 'Browse' to select the storage location.

Here you can also decide whether to create a Zip archive or not.

A zip archive is smaller to save, but you do have to unzip the files on the SafeFile server when this is an initial offline backup.

All the next steps are the same as for an Online backup.

5.3.1. General

The 'General' tab gives you a summary of the backup task. You can change the name of the backup task in this screen.

This is also the place where you can decide between an Online and an Offline backup.

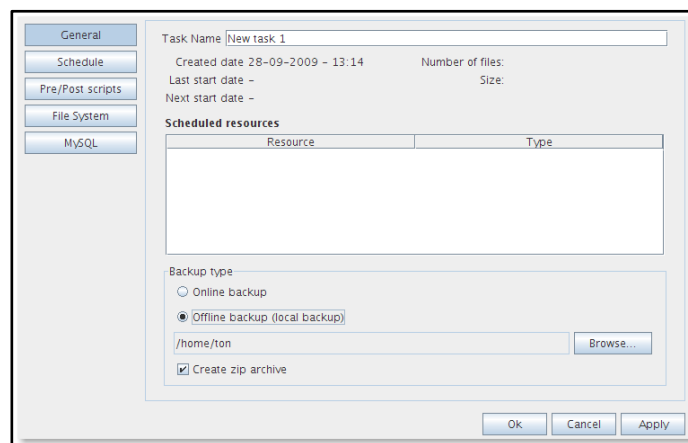


Figure 16: General view

Task Name

You can give the backup task a name.

Backup type

Set the backup type to 'Offline backup' and click on 'Browse' to select the storage location.

Here you can also decide whether to create a Zip archive or not.



A zip archive is smaller to save, but you do have to unzip the files on the SafeFile server when this is an initial offline backup.

All the next steps are the same as for an Online backup.

5.4. Restore

Your backed up data can be accessed by clicking "Restore" in the "Navigation" panel.

5.4.1. View backed up data

This view shows a collection of computers in the tree view. These computers are the base of the backup schedules. If the SafeFile Backup Client is (or was previously) installed on a computer, this computer will be shown in this screen. Furthermore, the tree view shows all backed up data in the same structure as it was on your computer. In this view you can restore or delete data from the Backup Server. You are also able to import a local backup for restore.

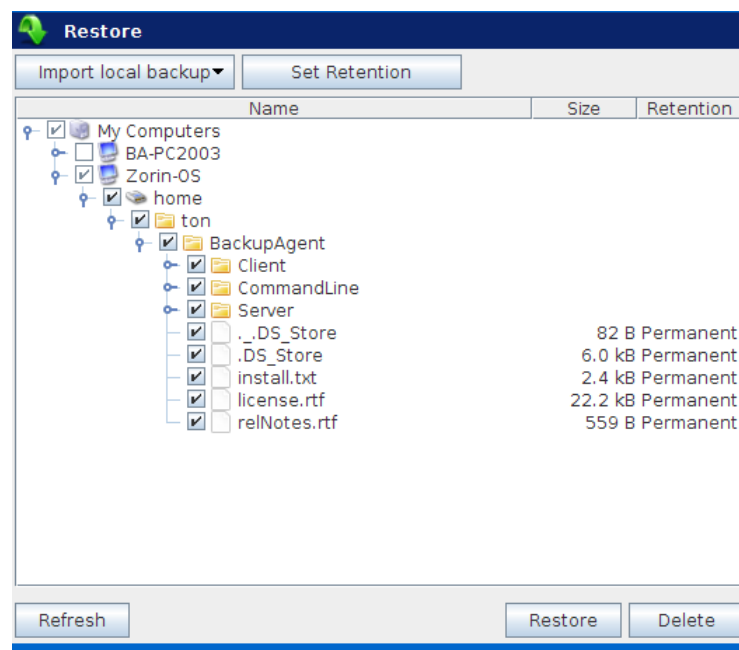


Figure 17: Restore

5.4.2. Restore latest versions of data

Data can be restored per file, folder or drive. Select files, folders or drives you want to restore, in the node tree. By clicking the 'Restore' button, the latest version of the data will be restored automatically.

This is the most common option.

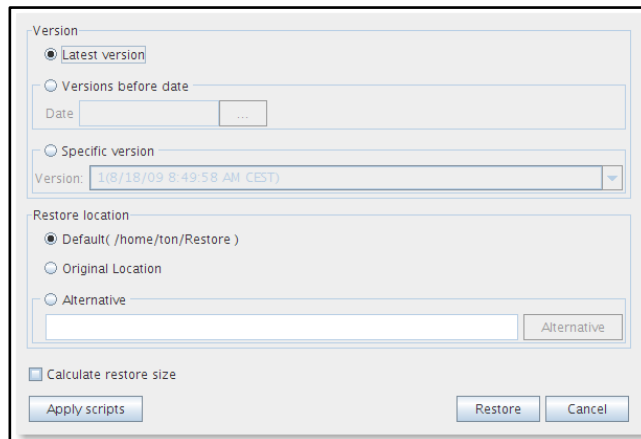


Figure 18: Restore screen

Before the restore starts, the client will ask you where you want to store the restored data. You can choose between the Default Location, the Original Location or an Alternative Location.

Note: If a file already exists on the restore location, a prompt appears that allows you to skip, rename or overwrite the file.

5.4.3. Restoring older versions of data

When a file has been changed within the period between two backups, the client will backup the file and notice that it has changed. The SafeFile Backup Client will then create multiple versions of the file depending on the retention value you set.

Restore at date

It is possible to restore a file or folder from a selected date in the past. You select a file or folder in the 'Restore' view and click on 'Restore' in the lower main panel. In the 'Restore' view that appears, click on the 'Versions before date' button. Here you can select a date. The latest backed up versions of the selected files or folder before that date will be restored.



5.4.4. Restore process

The restore process can be monitored by clicking on 'Details' on the bottom of the application during the process of a restore (the details screen will pop-up automatically when a restore is initiated).

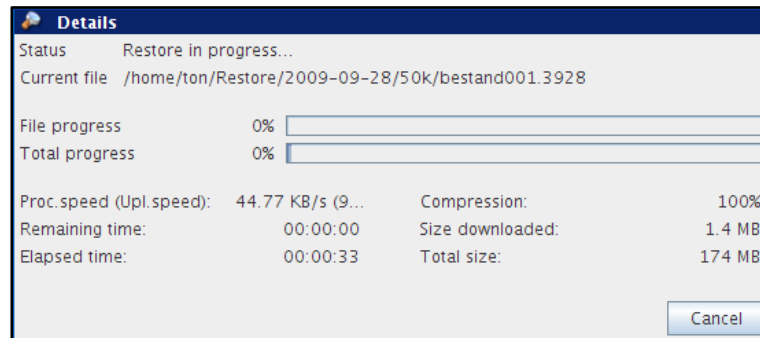


Figure 19: Restoring Data

The details regarding the restore of data:

Progress information

- ▶ Status: The status of the restore
- ▶ Current file: The file that is being restored at the time
- ▶ File progress: The progress of the restore of the indicated file
- ▶ Total progress: The progress of files that have been restored
- ▶ Compression: The average compression rate of the backed up data
- ▶ Size downloaded: The size of the downloaded data

5.4.5. Deleting data from Backup Server

To delete data from the Backup Server, click on "Restore" in the "Navigation" panel. Select the data that needs to be deleted by checking the checkboxes (you can select multiple files or folders). Click on the "Delete" button in the lower main panel to delete the file(s). The client will ask you to confirm the delete action.

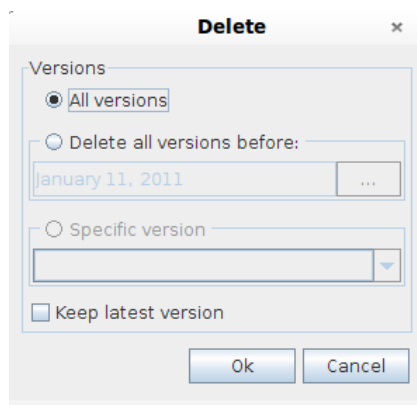


Figure 20: Confirm delete action

Note: You can choose to delete all data except the latest versions. This can be useful to clean up your backup account.

5.4.6. Reset Retention

Within the Restore view it is also possible to reset the retention per file, per folder or per computer. Note that resetting retention will count for all subfolders, files and versions within those folders.

5.5. Options

You can set different kinds of settings by clicking “Options” in the "Navigation" panel.

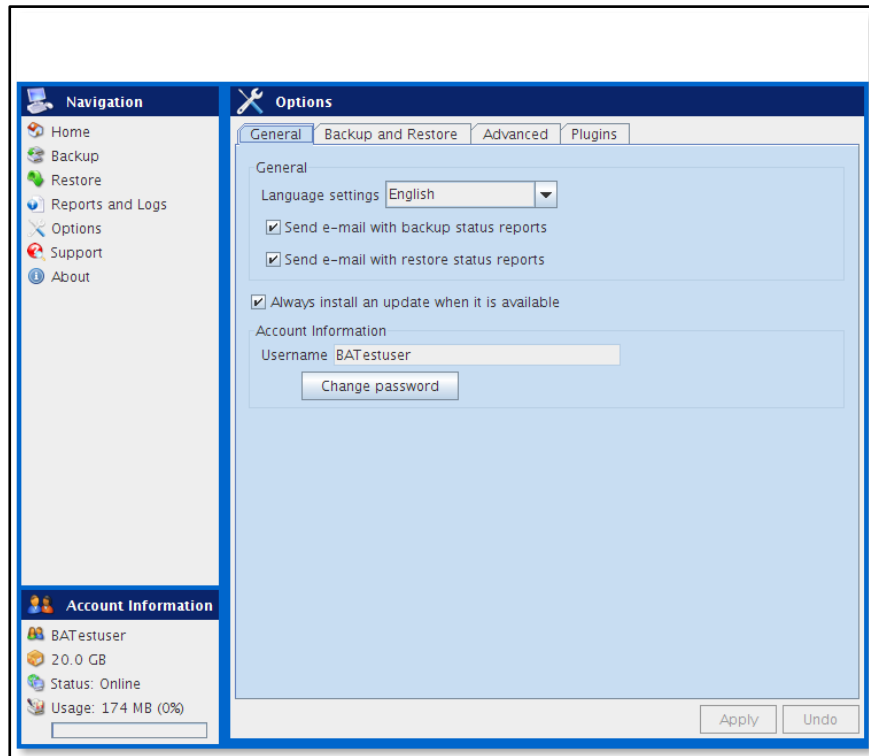


Figure 21: Options

5.5.1. General

In the “General”-tab, you can set general options of the SafeFile Backup Client:

- ▶ You can change the language of the application
- ▶ You can enable or disable the sending of backup and restore reports by email
- ▶ You can enable or disable to always install an update when it is available
- ▶ You can change the password for your backup account

Note: It might not be possible to change your password in the SafeFile Backup Client, since your SafeFile Backup Provider can disable this option

Note: It is not possible to change the username or encryption key.

5.5.2. Backup and Restore

In the “Backup and Restore”-tab, you can set options that are specific for backing up and restoring with the SafeFile Backup Client:

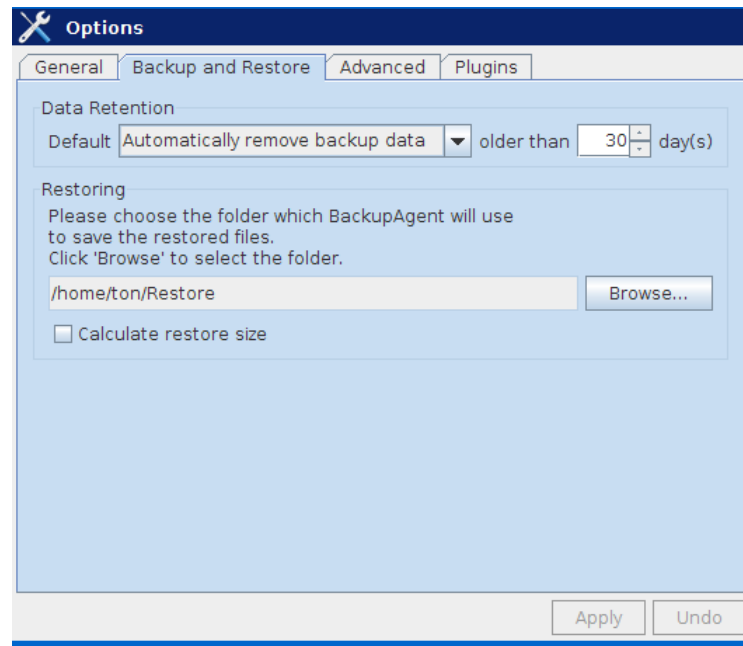


Figure 22: Default restore directory

Data Retention

In this view you can set the default data retention value. By default this is 30 days. This default value will be used when creating new backup tasks.

Restoring

In this view the default restore folder can be specified. This is the folder where data is restored by default when you don't choose a specified folder.

Restoring

You can enable or disable to always calculate the restore size.

5.5.3. Advanced

In the “Advanced” tab, you can set advanced options of the SafeFile Backup Client:

- ▶ You can set the type of Encryption of the data that will be backed up: AES 128 bits or 256 bits encryption. By default only AES 128 bits is available, but AES 256 bits can be enabled via a special file download.
- ▶ Timeout for the service request setting:
80 is the timeout for the socket layer. Further retries will be performed with the following delays: 5, 10, 20, 40 sec.
- ▶ Logging: Here you can set the directory where you can save the log files. You can also enable 'Detailed logging' in case of problems. You will be asked to enable this by support in case of problems.

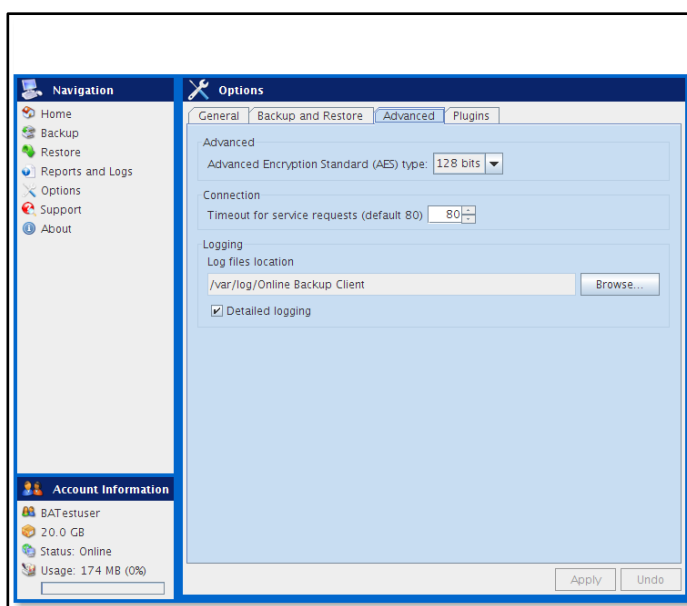


Figure 23: Advanced settings

5.5.4. Plugins

In the “Plugins” tab, you can set the options for all available plugins.

5.6. MySQL backup

Within the “Plugins” tab you can activate the MySQL backup plugin. Once you have this activated you can set the plugin options like the URL, username and password. This plugin can be used to backup local or remote MySQL databases.

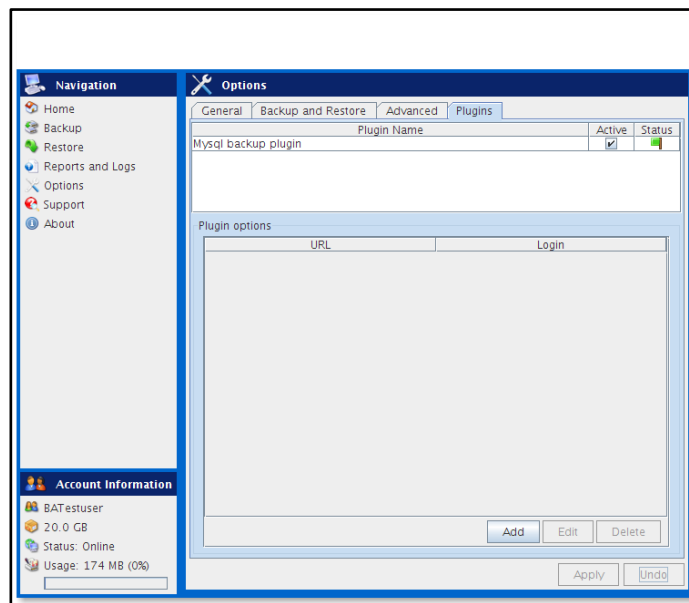


Figure 24: MySQL backup plugin

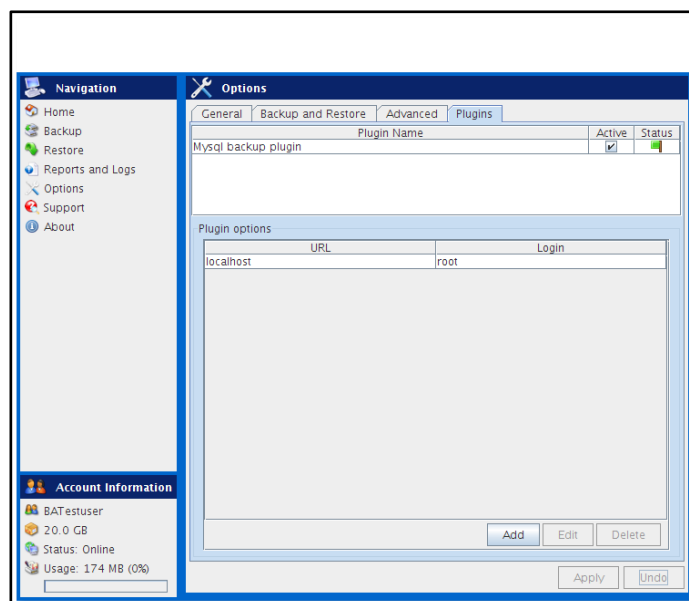


Figure 25: MySQL plugin Options



5.7. Report details

Click on “Reports and Logs” in the “Navigation” panel for a chronological overview of important events.

5.7.1. Reports

The “Reports” view shows a history of reports. You can view the status of past backups and restores:

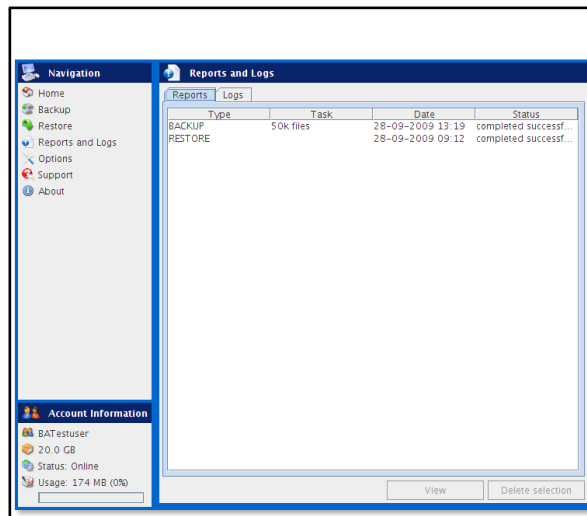


Figure 26: Report view

Double-clicking on a report will show report details:

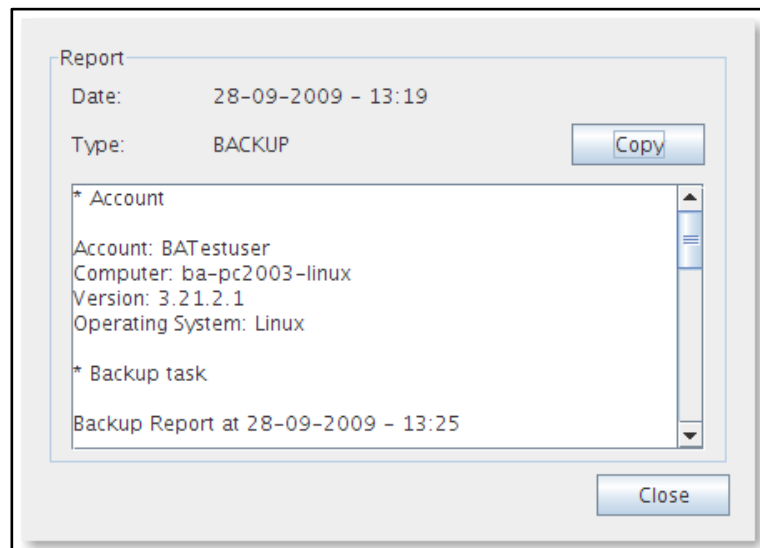


Figure 27: Report details

This report will also be sent to you by email.



It is possible to clean the reports or logs list. In the list of reports or logs, click on the 'Delete selection' button.

5.7.2. Logs

The 'Logs' view shows a history of log files:

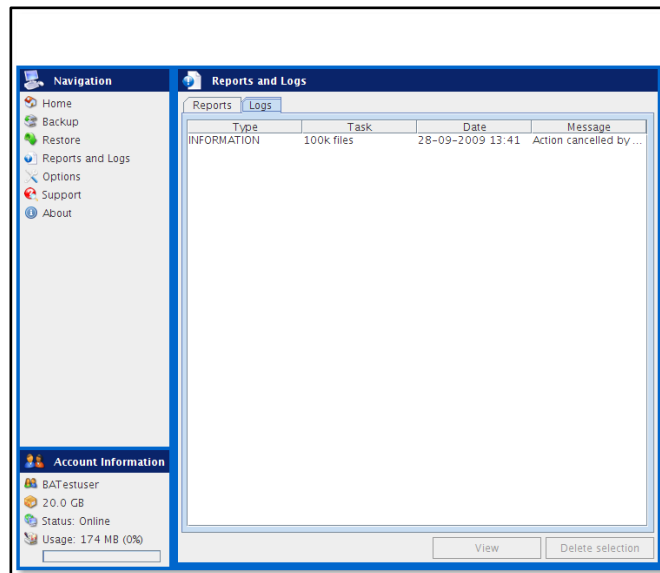


Figure 28: Log view

Three types of events can occur:

- ▶ **Information:** Information on the progress of the backup or restore procedure.
- ▶ **Warning:** Non fatal errors occurred during backup or restore process.
- ▶ **Error:** A fatal error has occurred in the SafeFile Backup Client.

Details of the log message can be viewed by clicking on 'View'. This shows a dialog with detailed information of the message.

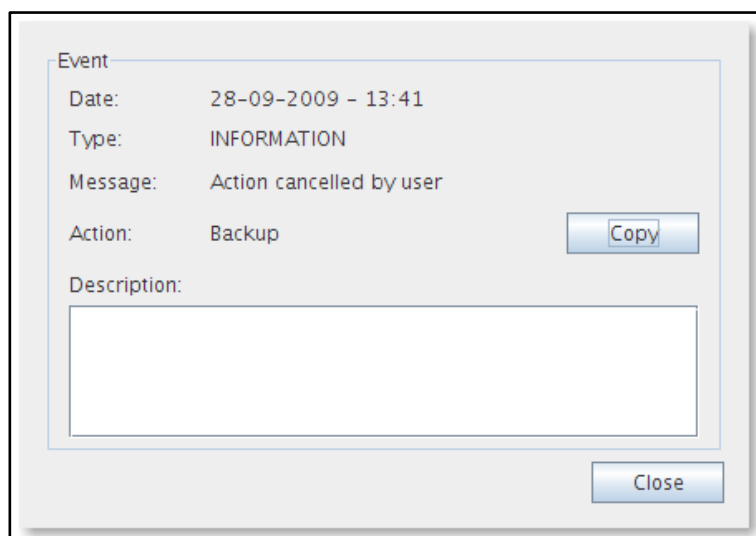


Figure 29: Log Event Details

5.8. Support

Clicking on "Support" in the "Navigation" panel will give contact details of your SafeFile Backup Provider.

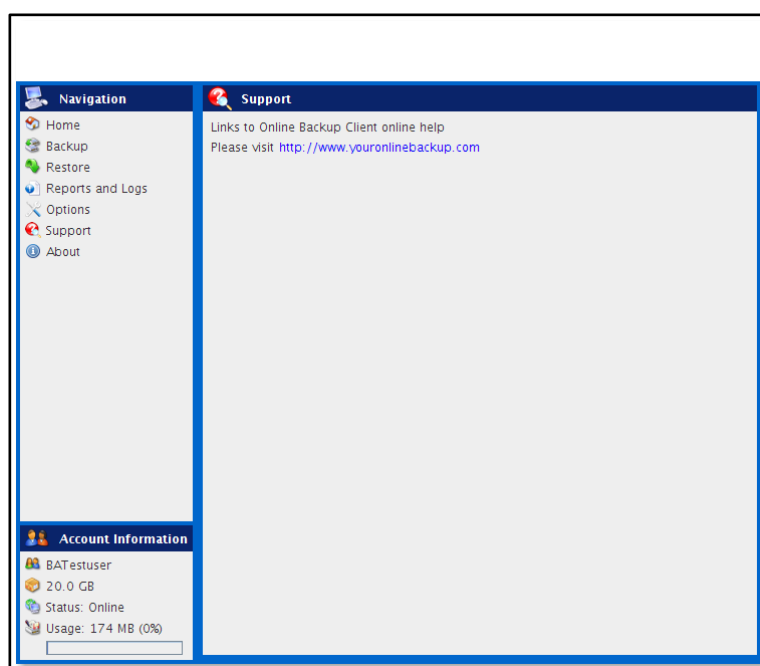


Figure 30: Support contact information



5.9. About

Clicking on “About” in the "Navigation" panel will give details about the version of the software and the license of the software.

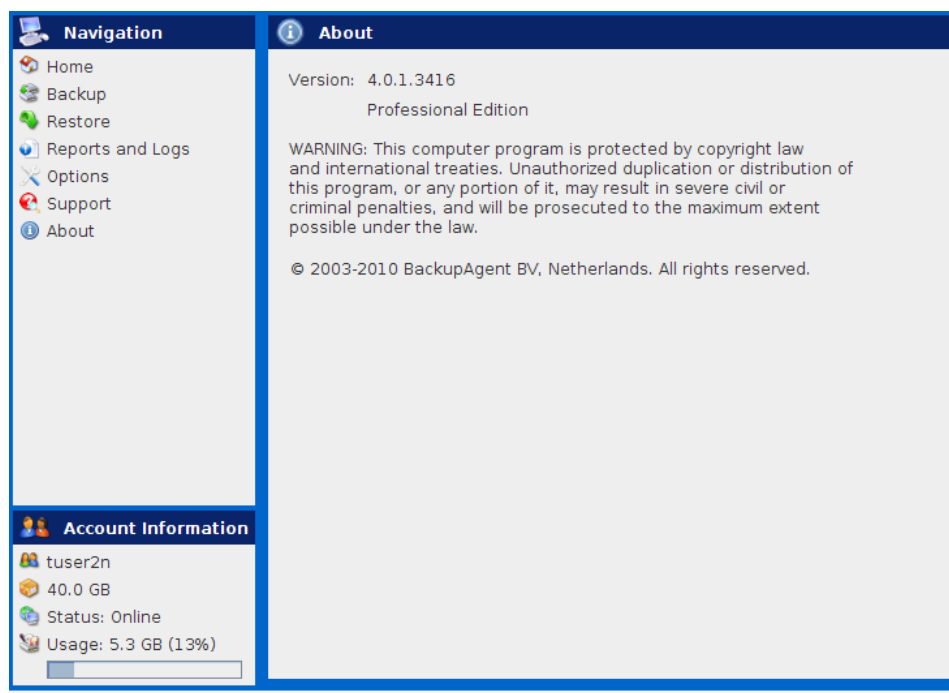


Figure 31: SafeFile Backup Client about