

CONTENTS

INTRODUCING ANDROID ONE	3
READ ME FIRST	3
DISCLAIMER	3
UNDERSTAND YOUR PHONE.....	5
GETTING STARTED.....	6
SIM CARD INSERTION	6
MEMORY CARD INSERTION.....	7
HANDSET KEYS.....	9
ON-SCREEN KEYS.....	10
CHARGING THE BATTERY	10
BASIC PHONE FEATURES.....	11
SIGNING IN WITH YOUR GOOGLE ACCOUNT.....	11
HOME SCREEN.....	12
APPS LAUNCHER.....	14
NOTIFICATIONS	15
GRAVITY SENSOR	16
PHONE UNLOCKING METHODS.....	16
USE GOOGLE SEARCH.....	19
USING THE TOUCH SCREEN.....	20
TAP AND HOLD	20
DRAG AN ITEM	20
SCROLL	20
SWIPE.....	21
USING THE PINCH ZOOM	21
DOUBLE-TAP	21
USING THE ONSCREEN KEYBOARD	22
RECENT APPS.....	23
CALLING AND MESSAGING.....	24

MAKE A CALL	24
CONTACTS.....	24
AIRPLANE MODE	25
SEND MESSAGE.....	26
MULTIMEDIA.....	27
CAMERA	27
PHOTOS.....	28
PLAY MUSIC.....	28
FM RADIO.....	29
SETTINGS, NETWORKS, AND APPS.....	30
CONNECT TO THE INTERNET	30
TETHERING & PORTABILITY	30
PAIR WITH BLUETOOTH DEVICES	32
CONFIGURING E-MAIL	32
GOOGLE MAPS.....	33
MANAGE APPS	34
SAFETY PRECAUTIONS	35
TAKING CARE OF YOUR DEVICE.....	36
BATTERY RECOMMENDATIONS	37
RECYCLE YOUR PHONE.....	38
COPYRIGHT	38

Introducing Android One

Your Micromax AQ4501 is an Android One phone. It runs Android 4.4.4 KitKat and, unlike other phones, automatically gets upgraded to the latest version of Android as soon as it is released. That means you can download from millions of the newest apps, games, movies, and books available on the Google Play Store, and can be sure that they will run fast. Android One phones also have the best of Google built-in, including your favorite apps like Google Search, Maps, and YouTube, as well as exciting new apps like Google Now, Voice Search, and Google Translate.

Read Me First

- Please read all safety precautions and this manual carefully before using your device to ensure safe and proper use.
- The descriptions in this manual are based on the default settings of your device.
- Available features and additional services may vary by device, software, or service provider.
- Apps and their functions may vary based on the country, region, software or hardware specifications. Micromax is not liable for performance issues caused by third-party apps.

Disclaimer

- The colors, specifications, functions and graphics shown/mentioned in the user manual may differ from

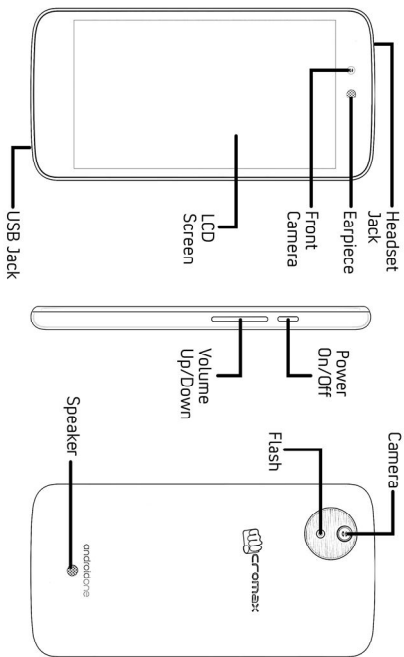
the actual product. In such a case, the latter shall govern. Images shown are for representation purpose only. Specifications are subject to change without prior notice. Micromax keeps the right to modify the content in this user guide without prior notice.

- Upon first use of your device, your device will send information related to your mobile, IMEI numbers, location details and other software details through SMS* automatically. This information may be used as further specified in Micromax privacy policy**.
- Talk and standby times are affected by network preferences, type of SIM cards, connected accessories and individual usage patterns. Services and some features may be dependent on the network, service/content providers, SIM cards, compatibility of the devices used and the content formats supported.
- Other product logos and company names mentioned herein may be trademarks or trade names of their respective owners.

*Operator tariff shall be applicable for SMS.

**Micromax privacy policy is available at www.micromaxinfo.com.

Understand Your Phone



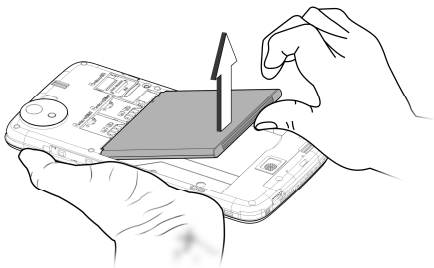
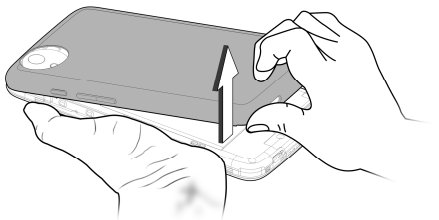
Getting Started

SIM Card Insertion

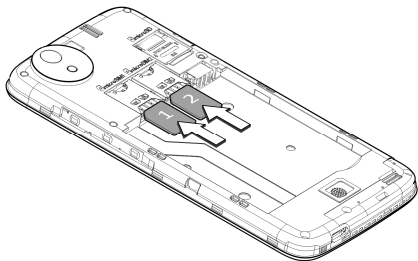
Your AQ4501 is a dual-SIM phone that supports two micro SIMs.

To insert the micro SIM card(s):

1. Switch off your phone and remove the rear cover and battery as shown in the following image:



2. Insert the SIM card correctly in the card slot(s), as illustrated in the following image:



3. Place back the battery and rear cover.



Please keep the SIM card out of the reach of children.

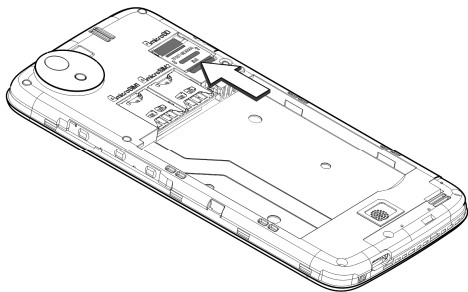
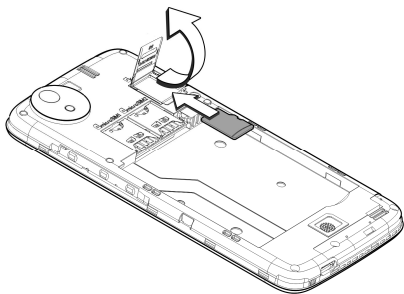


The card and the contacts are vulnerable to damage due to scratching or bending. Therefore, be careful when using, inserting or removing the cards.

Memory Card Insertion

To store additional multimedia files, you must insert a memory card. To insert the memory card:

1. Switch off the mobile phone, and then remove the rear cover and battery.
2. Flip up the metal latch and insert the memory card into the slot as illustrated in the following images:



3. Place back the battery and rear cover of the mobile phone.

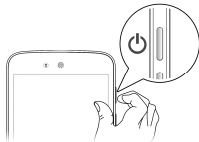


Use only compatible memory cards with this device. Incompatible memory cards may damage the device and corrupt the data stored in the card.

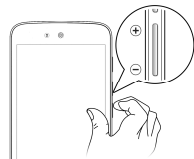
Handset Keys

Keys

Functions



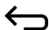


- Long press to switch on or switch off the phone.
- Press once to turn off the screen or to wake up the screen.
- Press for 2 seconds to view quick options to turn off the phone, switch to airplane mode, or adjust the sound profiles.



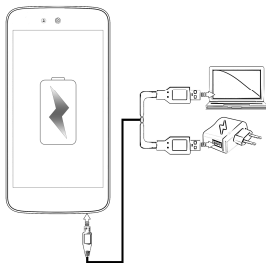
- Adjust the phone volume from the volume keys available on the right side of the device.
-


On-Screen Keys


Keys	Functions
	<ul style="list-style-type: none">• Opens the most recently used apps.
	<ul style="list-style-type: none">• Opens the Home screen.• On long tap, displays an option to open Google Now.
	<ul style="list-style-type: none">• Opens the previous screen you were working on.

Charging the Battery

Before using the device for the first time, you must charge the battery. You can charge the device with a travel adapter or connecting the device to a PC with a USB cable.



 You can also use a compatible USB charger to charge your battery.


 We suggest you charge the battery for 4 hours continuously for the first time.



Basic Phone Features

Signing in with your Google Account

Your Google Account lets you take full advantage of apps and services offered by Google. Configure your Google account on this phone to access your Gmail, Google Play Store, Google Maps, and much more.

The phone will prompt you to sign in to your Google Account when you turn on your handset for the first time.

 Internet connection will be required for the Google account setup step to appear.

To sign in to your Google Account at a later time,  →  → **Add account** → **Google**. Follow the registration steps to successfully configure your mail account on the device.

 If you do not have a Google Account, you can easily create one.

 You may also add other accounts associated with individual apps.

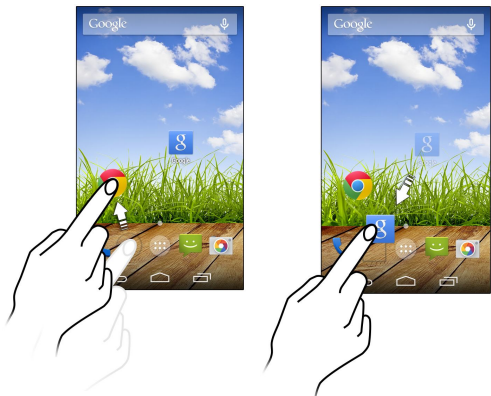
Home Screen

You can personalize your home screen with various items.

To view quick options, change wallpaper, add widgets, or open settings section, long tap on the home screen.

You can add extensions to the home screen by placing app shortcuts on the extended home screen. Your AQ4501 will show only those extended home screens which have some shortcut placed on them.

The bottom pane has five launcher icons which allow you to open different sections in the phone. Except the apps launcher in the middle of the pane, you can rearrange and manage the other four icons. Tap and hold to select a launcher icon and then you can rearrange, change, or remove them with ease.

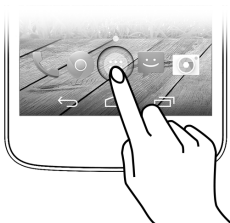



Know More About Widgets...

Widgets allow placing app shortcuts on your home screen. You can place analog clock, contacts, and other such sections of your phone on the home page and access them directly! To view all available widgets, long tap on the home screen and then tap **Widgets**.

Apps Launcher

Apps launcher or Apps menu is available right in the middle of the home screen bottom pane.



Tap  to view all apps installed on the phone. In the apps menu, tap and hold any app to take it to the home screen; release the hold to place at any desired location on the home screen.

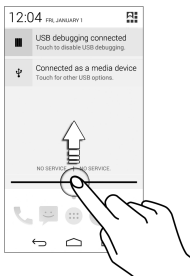
Notifications

Notification icons inform you of new messages and events as and when it appears in the device.

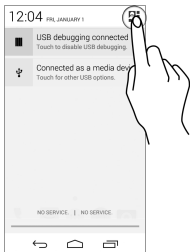
Open Notification Panel



Close Notification Panel



Open the Toolkit



Show Notification Panel





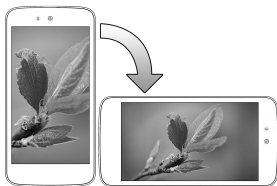
When you receive a notification, its icon appears in the status bar, along with a brief summary. You may clear each notification separately by swiping it towards left or right.

Toolkit provides you shortcuts to manage basic phone features, such as Airplane Mode, Wi-Fi, Display Brightness, and many more.

Gravity Sensor

Your phone has gravity sensor to detect orientation and display correct orientation (auto-rotate) based on the motion.

You can enable/disable the auto-rotate feature from  → 
→ **Display** → **Auto-rotate screen**.



Phone Unlocking Methods

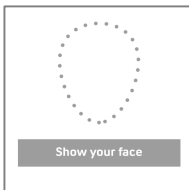
You may need to provide PIN, password, draw a pattern, take your face in front of the phone screen, or simply slide to unlock your phone.

Slide unlock is the default unlocking method in the phone. To

unlock the screen:

1. Press the power key to wake up the phone.
2. Hold and drag the lock icon towards the unlock icon.

Face Recognition



Allowing you to keep your face as screen unlocking password. You just need to look at your phone to unlock it.

Look at your phone to unlock it!

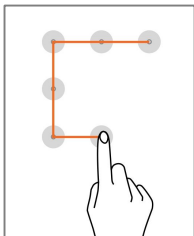
PIN



You may enter a PIN and set it as your screen unlocking password.

Enter your PIN to unlock your phone!

Pattern



Set and draw your desired pattern!

You can set your own pattern by connecting the dots to prevent your phone from unauthorized access.

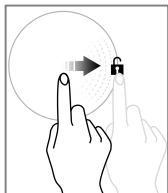
Password



Enter your password to unlock!

You may enter any desired password and set it as your screen unlocking password.

Slide



Just wake up the screen and slide the lock icon towards the unlock icon to unlock your phone.

Slide from lock icon to unlock icon!



You may set any desired locking technique from 

→  → **Security** → **Screen lock**.



It is important to remember your screen lock password/pattern/PIN.

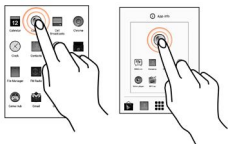
You can disable all unlocking methods from your handset by selecting the **None** option.

Use Google Search

Search for anything on your phone or on the Internet using the Google search bar at the top of your home screen. Type your search words into the box or press the microphone icon and use your voice to speak your search query. From the search box, you can also use voice commands to perform various actions on your phone. In addition to the search box on your home screen, Google Search is available in the apps menu, too.

Using the Touch Screen

Tap and Hold



Tap and hold an item to view the list of actions based on the selected item and condition. Also, you can move an item from the apps screen to the home screen using this method.

Drag an Item

Tap and hold an item and move your finger on the screen until you reach the target position. The item follows your finger.

You can generally drag items from one location to another on the home screen. Also, you can delete items from the home screen by holding the item and dragging it to the **Remove** label that becomes available only when you hold the item on the Home screen.



Scroll



To scroll a list, slide your finger across the surface of the screen upwards or downwards (without dragging an item).

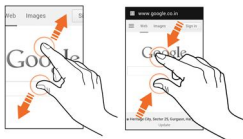
Swipe

Place a finger on the screen and steadily slide your finger in the desired direction.

For example, when you are viewing a picture, to view the next picture, swipe left.



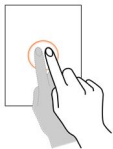
Using the Pinch Zoom



You can open any image or web page and then use your thumb and index finger to zoom the display through the pinch gesture.

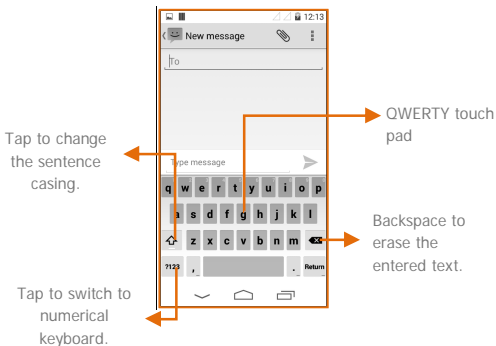
Double-tap

Tap quickly twice on a webpage, map, or other screen to zoom. For example, double-tap a section of a webpage in the browser to zoom that section.



Using the Onscreen Keyboard


Some apps display the keyboard by default. In others, you will be required to tap a text field, where you want to enter text, to open the keyboard.



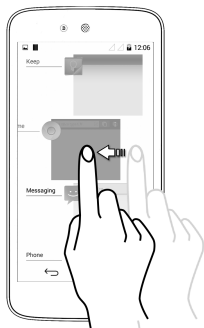
i After typing, tap  key to close the keyboard.

i Tap and hold the text field to open a menu and to cut/copy/paste text.

Recent Apps

Tap and hold the  key on the home screen to view the list of recent apps. You can easily remove items from the list to free some memory and make your phone work faster.

There are two ways to remove items from the list.



Drag an item towards left or right.




Tap and hold an item and then select "Remove from list".

Calling and Messaging

Make a Call

To make a call:

Tap  on the menu screen or the home screen to open the dial pad for making calls.

By default, the dialer will display a list of contacts on which calls have been made very often and the contacts which have been marked as favorites.

You can show the dialer by tapping  or view the call history by tapping .

Contacts

Go to  → 

Store, use, and synchronize contact details in your contact list. You can now create contact groups or mark contacts as favorites in your phonebook. Use tabs or swipe through to view the list of contact groups, contacts, and favorite contacts list.

View list of
favorite contacts




View list of
contacts




View list of
contact groups






Search for your desired contacts under any of the three tabs by tapping  icon.



Add a new contact in the contacts list by tapping .

You can synchronize your contacts list with any of your accounts configured on this device.

To synchronize your contacts list:

1. Tap the  icon from the contacts screen and then tap **Accounts**.
2. Select the account(s) with which contacts list is to be synchronized. You can auto-sync contacts by selecting the **Auto-sync app data** option.

Your contacts synchronization will be complete in a few seconds.




To synchronize contacts, you need to have Internet connectivity via your SIM or Wi-Fi. If your Sync does not proceed as expected, check whether data option is set to ON.

Airplane Mode





Some locations may require you to disable all the wireless features of your mobile. The Airplane Mode enables you to disable all incoming and outgoing calls, Wi-Fi, and Bluetooth connections.

To activate the airplane mode:

1. Press and hold the Power button and then select **Aeroplane mode**.
Or
2. Drag notification panel down, tap , and then select **AEROPLANE MODE**.

Send Message

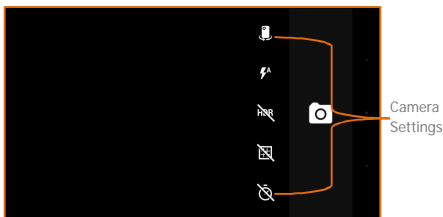
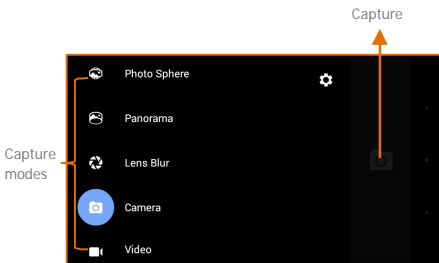
To send a message:

1. Tap  on the menu screen or the home screen to go to the messaging section and then tap  + to compose a message.
2. Enter the contact name (if it exists) or enter the phone number.
3. Tap the  icon to view the types of files that can be attached and select the desired type of multimedia file.
4. Tap to select the composition text box and enter your message body in it.
5. Tap  to send the multimedia message.

Multimedia

Camera

Go to  → 



Photos

Go to  → 

You can use the Photos app to view pictures and share files. You can also sign in to Google Photos and back up your photos.

Play Music

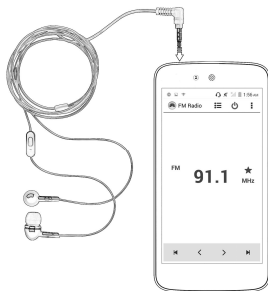
Go to  → 

You can use the Play Music app to play, share music files and listen to your music collection anywhere as your music is stored online. You can also buy music on Google Play.

FM Radio

Go to  → 

You can listen to your favorite FM channels using the inbuilt FM receiver of your phone. Before starting the FM, you need to plug-in the headset as it works as antenna for the FM radio. Use the intuitive buttons and icons on the phone in the radio interface to enjoy the features of your inbuilt FM radio.





Press the phone's volume up/down keys on the right side of the mobile phone to adjust the volume.

Settings, Networks, and Apps

Your phone can connect to a variety of networks and devices, including Internet, Wi-Fi, GPRS, Bluetooth, devices, such as headsets. You can also transfer files to/from your PC through the data cable.

Connect to the Internet

To configure Internet:

Go to  →  → **More** → **Mobile networks** → **Access Point Names** and select the SIM for which access point name is to be configured. Select the access point name or change the access point name for your Internet connectivity as provided by the service provider of your SIM card.

By default, your network provider sends the access point name settings via SMS, or it comes with your SIM card. You may need to install these settings.



After this, you can choose from the listed access point names. If the access point names are not listed by default, please contact your network provider for the same.

Tethering & Portability

You can use your AQ4501 as a modem and connect your PC or laptop to the Internet, when required. Start using your SIM data pack on your PC or Laptop now!

Go to  →  → **More** → **Tethering & portable hotspot.**

USB Tethering

1. Connect your phone with your PC/Laptop via USB cable.
2. Select the **USB tethering** option.
3. Select your phone network as the network connection in your PC/laptop and get access to the Internet.

Bluetooth Tethering

1. Pair your phone with the Bluetooth enabled PC/laptop via Bluetooth pairing option.
2. Select the **Bluetooth tethering** option in your phone.
3. On the paired PC/laptop, select the Bluetooth device (your phone) and choose to connect to the Internet.

Wi-Fi Hotspot

1. Turn on the **Portable Wi-Fi hotspot** option in your phone.
2. On the other Wi-Fi enabled PC/laptop/handset, choose your phone as a Wi-Fi network to connect with it.
3. View and configure Wi-Fi hotspot settings by tapping the **Portable Wi-Fi hotspot** option.



Your mobile operator will charge you based on your GPRS data usage.

Pair With Bluetooth Devices

Go to  →  → **Bluetooth**.

To pair your AQ4501 with some other Bluetooth device:

1. If Bluetooth is off, turn it on and then tap **Bluetooth**. Your phone scans and displays the Bluetooth devices in range.
2. Tap the ID of the other device in the list to pair with it.
3. You will be prompted to confirm passkey on both devices. Tap **Pair** to confirm the passkey and pair the devices. On successful pairing, your phone connects to the device.



If the device you want to pair with is not in the list, make it discoverable and then search. If your phone stops scanning before you make the other device discoverable, tap **SEARCH FOR DEVICES**.






Tap **Micromax AQ4501** at the top of the scanned device list to make your AQ4501 visible on other devices.

Configuring E-Mail

You can check and reply to your e-mails from your AQ4501 from anywhere and anytime. Apart from the Gmail account, you can configure other accounts too on this device.





To set up an email account:

1. Go to  →  → **Add account** → **Corporate**.
2. Type the email address and password in the respective fields and tap .
3. Set account settings, as required.
4. Provide your account name and your name to successfully finish account configuration.

The server will check for online settings automatically and your account will be set up. If not, please check your Internet settings before proceeding.

Google Maps

Google Maps is an app from Google that gives you access to various map-related services. You can view your location on a map, search for different landmarks, find directions to locations, and even view Street View photos from around the world. The built-in navigation works with your GPS to give step-by-step route guidance while driving or walking. And you can even download maps to use offline, when you don't have an Internet connection. For the best experience with Google Maps, configure the following settings:

- Enable location access from  →  → **Location**.
- Go to  →  to start using Google Maps.



Internet connection is required for using Google Maps. When you use the map, you use your Internet connection to transfer data to and from your phone.





The Google Maps app may not be available in every street, country or region.





Micromax does not guarantee the accuracy of any directional services.

Manage Apps

Your phone comes with a host of apps to make your life easier and more convenient. The Android phones offer users access to unlimited entertainment sources. You can download apps, games, movies, and books from the ever increasing Android market. New items get added almost daily to the market to give users a never ending fun experience.

To view and manage the list of all inbuilt, downloaded, and running apps, go to  →  → **Apps**.

To download apps, games, movies, and books from the Google Play Store, go to  →  to access the Google Play Store. View the details and download items, as desired.



Not all items are free of cost in the Google Play Store.



You need to have an Internet connection and be signed in to your Google Account to use the Google Play Store.

Safety Precautions



Remember to comply with legal requirements and local restrictions when using the phone.



Your Phone's radio waves may interfere with inadequately shielded medical devices. Consult a physician or manufacturer of the medical device to know whether they are adequately shielded from external Radio Frequency. Switch off your device when regulations require you to do so.



Always keep the phone and accessories out of reach of small children. Small parts such as the SIM card, dust cap, lens ring and lens cap as well as the micro SD card can be dismantled and swallowed by small children.



Do not place the phone near electromagnetic data carriers such as credit/Debit cards. Information stored on them could be lost.



Permanent hearing loss may occur if you use earphones at high volume for prolonged periods. Set your volume to a safe level. If you experience discomfort in your ears, reduce the volume or discontinue the use of your earphones.



Ring tones, info tones and hands-free talking are reproduced through the loudspeaker. Do not hold the phone to the ear when it rings or when you have switched on the hands-free function.



The mains voltage (V) specified on the power supply unit must not be exceeded to prevent damage to the charging device. The power supply must be plugged into an easily accessible AC power socket when charging the battery.



You may only open the phone to replace the battery, SIM and micro SD card. You must not open the battery under any circumstances. All other changes to this device are strictly

prohibited and will invalidate the warranty.



The phone may cause interference in the vicinity of TV sets, radios and PCs.

Only use Micromax specified batteries and charging devices.



All batteries can cause property damage, injury or burns if a conductive material taps the exposed terminals. Exercise care in handling any charged battery, particularly when placing it inside your pocket, purse or other container with metal objects. Do not dispose of batteries in fire as they may explode.

Do not use the phone while driving. When you have to use the phone, please use the personal hands-free kit.



Please put the phone safely in the phone stand. Do not put it onto any passenger seat or any place from which it may fall down in case of vehicular collision or emergency braking.



Flight is influenced by interference caused by the phone. It is illegal to use a phone on the airplane. Please turn off your phone during a flight.



Professional service: The phone must be installed or repaired by Micromax authorized personnel. You are likely to suffer a huge risk when you install or repair this phone by yourself, which also goes against the warranty rules.

Taking Care of your device

Your device is a product of superior design and craftsmanship and should be handled with care. The following suggestions will help you protect your phone.

- Keep the device dry. Precipitation, humidity, and all types of liquids or moisture can rust the electronic circuits. If your device gets wet, remove the battery, wipe it with a dry cloth and take it to an authorized service center.

- Do not store the device in high or cold temperature. High temperatures can shorten the life of electronic devices and damage batteries.
- Do not use or store the device in dusty, dirty areas. Its moving parts and electronic components can get damaged.
- Do not attempt to open the device other than as instructed in this guide. Repairing this phone by yourself other than our authorized service agents/centers goes against the warranty rules.
- Do not drop, knock, or shake the device. Rough handling can break internal circuit boards and fine mechanics.
- Do not use harsh chemicals, cleaning solvents, or strong detergents to clean the device. Only use a soft, clean, dry cloth to clean the surface of the device.
- Do not store your device near magnetic fields or allow your device to come in contact with magnetic fields for extended period of time.

Battery Recommendations

- Please put the battery in a cool and well-ventilated place out of direct sunlight. We recommend you to charge the battery at room temperature range.
- Batteries have life cycles. If the time that the battery powers equipment becomes much shorter than usual, the battery life is at an end. Replace the battery with a new battery of the same make and specification.
- Use manufacturer approved batteries, chargers, accessories and supplies. Micromax will not be held responsible for user's safety when using unapproved accessories or supplies.
- Do not discard the battery with household trash. Please dispose of used battery according to your local environmental laws and guidelines.

Recycle your Phone



The WEEE logo (shown at the left) appears on the product (battery, handset, and charger) to indicate that this product must not be disposed off or dumped with your other household wastes. You are liable to dispose of all your electronic or electrical waste equipment by relocating over to the specified collection point for recycling of such hazardous waste.

Collection and proper recovery of your electronic waste equipment at the time of disposal will allow us to help preserve the environment. Recycling of the electronic waste equipment will ensure safety of human health and environment. For more information on best practices for disposal of electronic and electrical waste, please visit to our web site: www.micromaxinfo.com/weee.php.

Note: Micromax will not bear any responsibility for any incompliance with the above mentioned guidelines or improper usage of the mobile phone.

Copyright

All rights reserved. Reproduction, transfer, distribution or storage of part or all of the contents in this document in any form without the prior written permission of Micromax is strictly prohibited.