



eCam Series User Manual

© 2010 E-matic • 1-888-968-1985 • <http://www.Ematic.us>

Windows is a registered trademark of Microsoft Corporation.

YouTube is a registered trademark of Google, Inc.

Table of Contents

1.0 Introduction	3
1.1 Foreword.....	3
1.2 Package Contents.....	3
1.3 Warnings.....	3
1.4 Maintenance and Care.....	4
1.5 Storage	4
1.6 System Requirements.....	5
1.7 Data Storage Devices	5
2.0 Getting Started	6
2.1 Components and Controls	6
2.2 Installing the Battery	8
2.3 Charging the Battery	8
2.4 Connecting to a Computer	10
2.5 Using Data Storage Devices (SD/MMC/SDHC Cards)	11
3.0 Basic Operations	12
3.1 Powering ON/OFF	12
3.2 Navigating Menus	12
3.3 Recording Video	13
3.4 Recording Still Photographs.....	14
3.5 Playing Back Recorded Data	14
3.6 Deleting Recorded Data.....	18
3.7 Downloading Data Files to a Computer	18
4.0 Editing Recorded Data	19
4.1 Installing Xvid Codec	19
4.2 Installing ArcSoft MediaImpression.....	20
4.3 Using ArcSoft MediaImpression.....	21
4.4 Posting Media to YouTube.....	23
5.0 Product Specifications.....	24



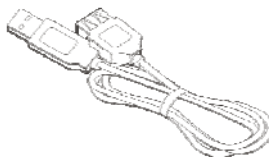
1.0 Introduction

1.1 Foreword

Thank you for purchasing this digital video camera. Please read this manual carefully before using the product.

This user manual contains the most current product information at the time of production. However, specifications and software updates are subject to change without notice. While the illustrations in this user manual are to clarify and detail the operation of the digital video camera, they may differ from the product you purchased. However, the information remains applicable to your digital video camera.

1.2 Package Contents



Your eCam digital video camera includes the following items:

- Lithium Battery
- 4GB SD Card
- Protective Case
- USB Cable
- Power Adapter
- Audio/Video Cable
- HDMI Cable
- User Manual
- Installation CD
- Wrist Strap

1.3 Warnings



WARNING: Do not open the housing or disassemble the digital video player as this may lead to death or injury from electric shock.

TV programs, movies, music, images, and other media sources may be protected by copyright. Any reproduction, retransmission, republication, or other use of all or part of any of these forms of media may be prohibited, unless prior written permission has been granted by the appropriate copyright owner.

1.4 Maintenance and Care

Use this product in an environment with a temperature between 0° - 40°C (32° - 104°F).

Protect this product from moisture. To prevent exposing the digital video camera to condensation when moving from a colder place to a warmer place:

Place this product in a sealed plastic bag.

Allow the digital video camera to acclimate to the new temperature before removing it from the sealed plastic bag.

When in use, always wear the wrist strap and grasp the digital video camera firmly to avoid physical damage resulting from collision or impact with other objects.

Use the protective case provided to protect the lens and screen from scratches.

To clean the lens:

1. Power OFF this digital video camera.
2. Using only air, blow away dust from the surface of the lens.
3. If necessary, apply a non-solvent lens cleaning solution to a soft cloth made especially for optical devices.

Note: Do not use an organic cleanser to clean the camera.

4. Using a soft cloth made especially for optical devices, wipe away any remaining debris from the lens.

Note: Do not touch the lens with your fingers.

1.5 Storage

Do not store this digital video camera in direct sunlight or in extreme temperature conditions, such as those found in a parked car.

To store this digital video camera:

1. Power OFF this digital video camera.
2. Remove the battery.
3. Store both the digital video camera and the battery in a cool, dry place, away from direct sunlight.



1.6 System Requirements

The following minimum system requirements are strongly recommended to fully optimize the function of this digital video camera:

Operating System	Microsoft Windows 2000, XP, Vista, Windows 7
CPU	Intel P111667 or of equal performance
Memory	128 MB
Sound and Display Card	DirectX8
CD-ROM	4x speed
Hard Disk	1 GB of available space
USB Port	One standard USB 1.1 or USB 2.0 port

1.7 Data Storage Devices

SD/MMC/SDHC storage devices can be used with this digital video camera, but must be purchased separately and have a capacity of 16GB or less.

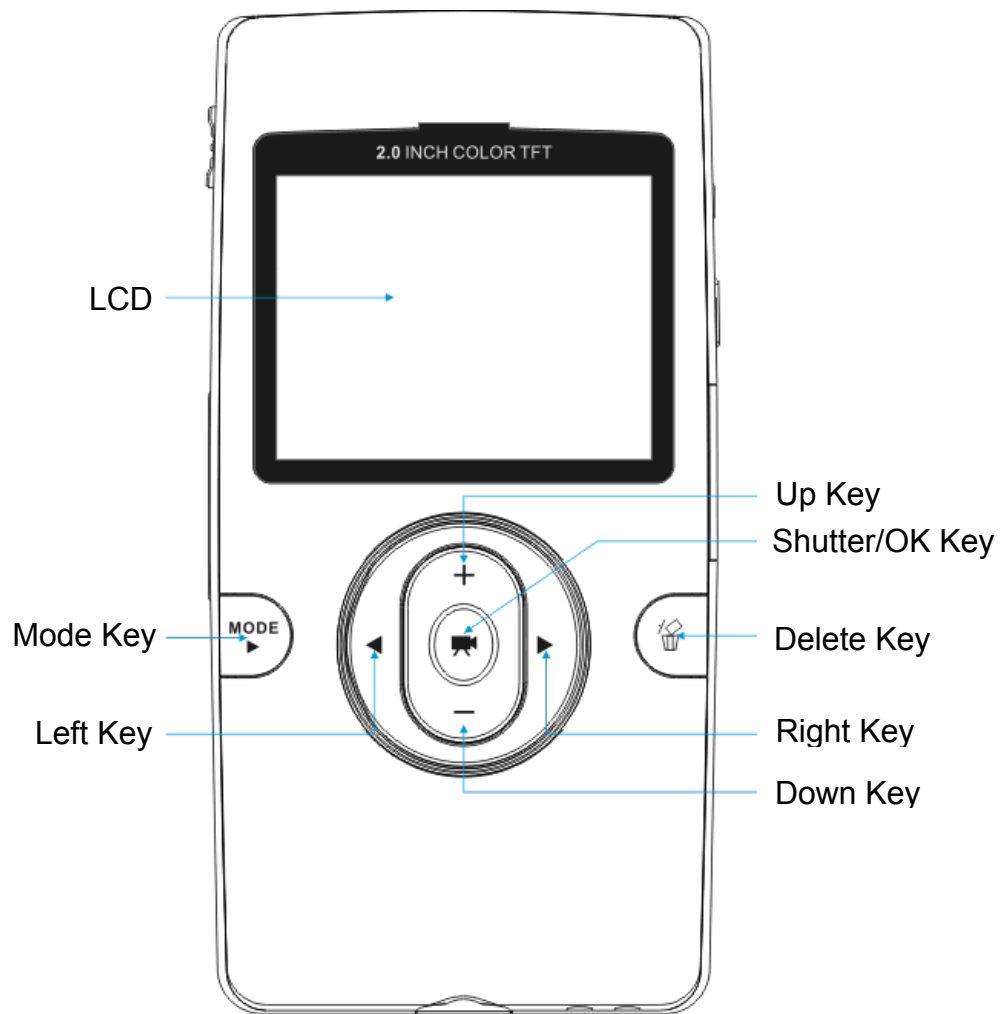
To ensure compatibility, it is recommended this digital video camera be accessible when purchasing a data storage device.

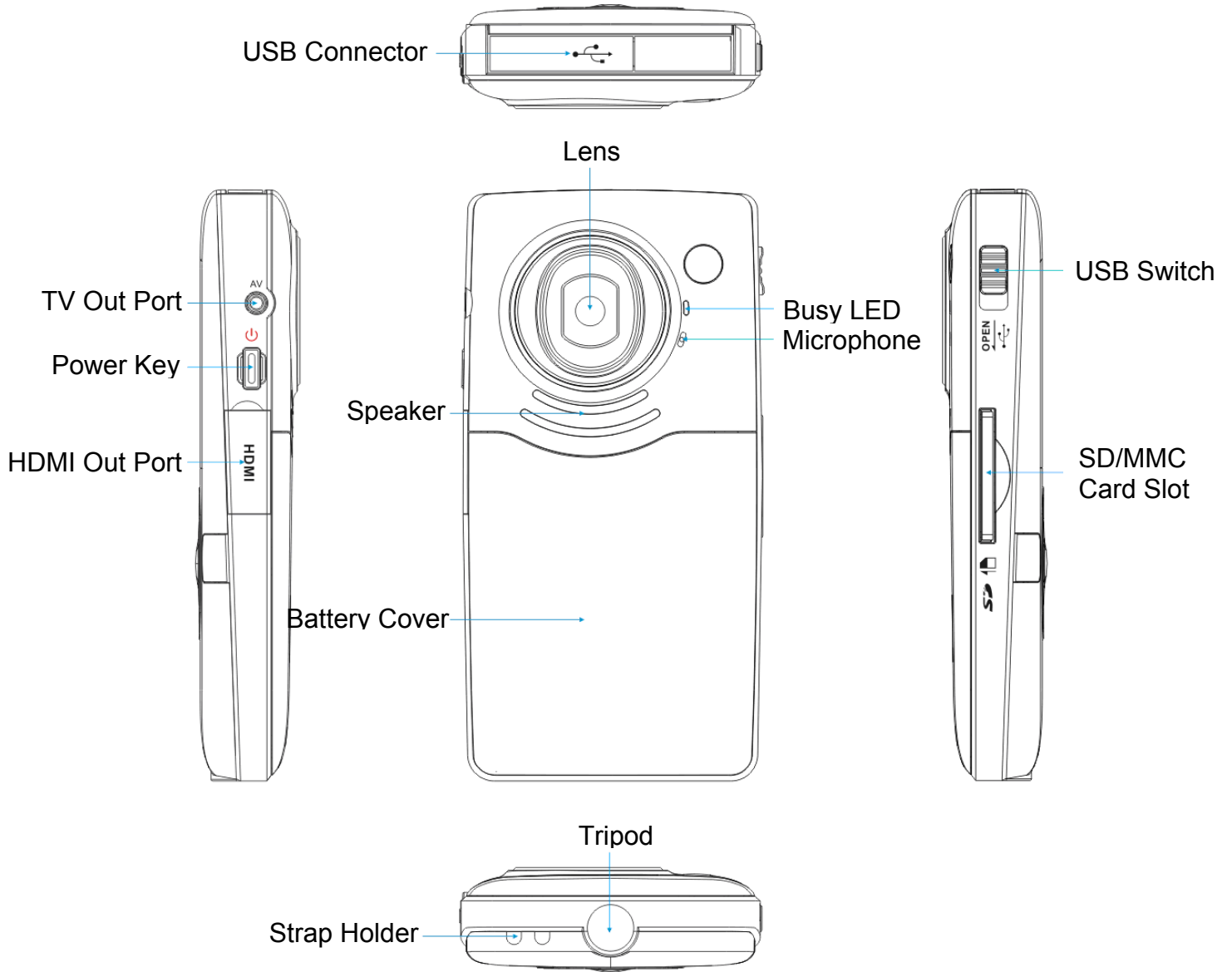
With an SD/MMC/SDHC storage device installed, the internal memory of this product will be disabled.

SD storage devices are equipped with a write-protection switch, which can be used to prevent accidental deletion of data. When this switch is pushed toward the bottom of the card and locked, the data on the SD card will be protected. However, when the SD card is in write-protected mode, it cannot be used to record or edit data.

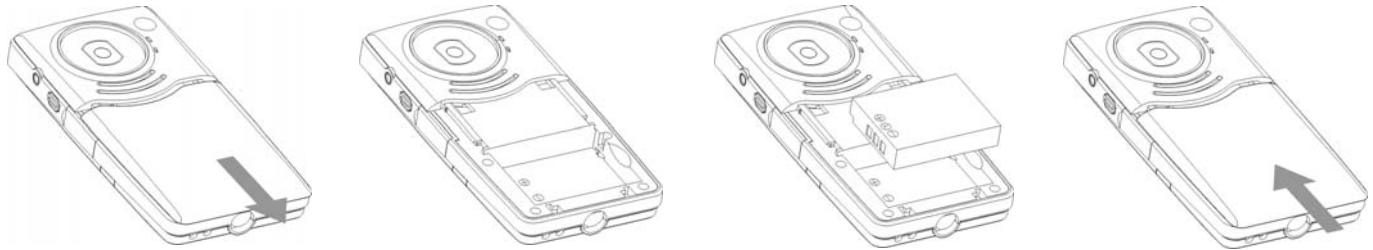
2.0 Getting Started

2.1 Components and Controls





2.2 Installing the Battery



1. Slide the battery cover downward to remove.
2. Insert the lithium battery, ensuring the polarity of the battery terminals are correctly aligned with the digital video camera.
3. Close the battery cover.



WARNING: Lithium Polymer and Li-ion batteries are volatile and may explode causing fire, personal injury, and damage to property if misused, punctured, or defective. Keep out of the reach of children. If at any time you witness a battery starting to balloon, swell, smoke, or get hot to the touch, disconnect the battery and observe in a safe place for a minimum of 15 minutes before discarding.

2.3 Charging the Battery


The battery for this digital video camera is charged through the USB connector located on the top of the housing. The battery may be charged by connecting this product to either a computer or its power adapter.

To charge the battery using a computer:

1. Power OFF the digital video camera.
2. Connect the camera via its USB connector to a computer:

NOTE: The first time you connect the player to the computer; the computer will detect it and automatically install any necessary drivers. When it has finished, the player will appear in the *My Computer* folder of the computer.

3. Allow the battery to charge completely. During charging, the BUSY LED light will be illuminated. When charging is complete, the BUSY LED light will be off.

4. When charging is complete, safely disconnect the camera from the computer:
 - a. In the system tray, click the green arrow () to display a list of devices attached to the computer.
 - b. Select the digital video camera from the list.
 - c. Wait for Windows to safely disconnect the camera from the computer. Windows will display a message when it is safe to remove.
5. Disconnect the camera from the USB cable, if used, or detract the USB connector by sliding the USB switch on the camera housing to the DOWN position.



WARNING: Any USB device that stores data (e.g. flash drives, cameras, and media players) should always be disconnected from your computer using this method to avoid corrupting the stored data.

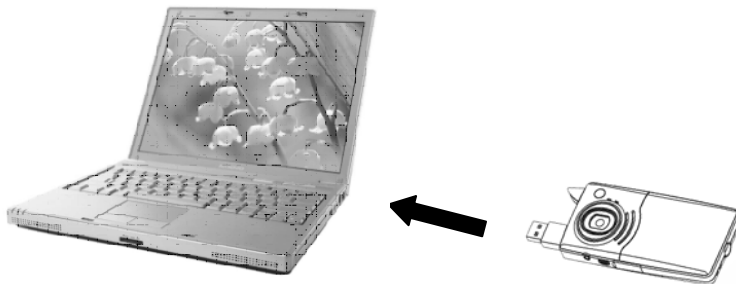
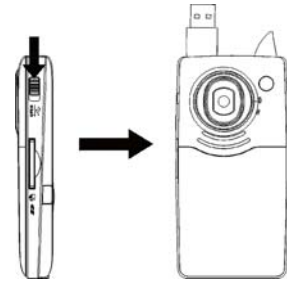
To charge the battery using a power adapter:

1. Power OFF the digital video camera.
2. Connect the camera via its USB connector to the power adapter.
3. Connect the power adapter to a 120V outlet.
4. Allow the battery to charge completely. During charging, the BUSY LED light will be illuminated. When charging is complete, the BUSY LED light will be off.
5. When charging is complete, disconnect the camera from the power adapter.
6. Disconnect the power adapter from the USB cable.
7. Disconnect the power adapter from the 120V outlet.

2.4 Connecting to a Computer

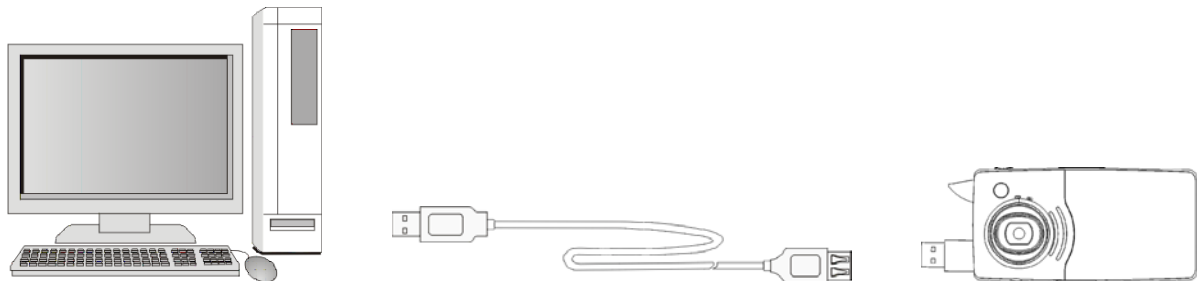
This digital video camera has two alternative ways of being connected to a PC: (1) by inserting its USB connector directly into a USB port on the computer, or (2) by connecting the USB connector on the camera to the USB port on the computer via the USB extension cable.

1. Power OFF the digital video camera.
2. Slide the USB switch UP to extend the USB connector.
3. Power ON the camera.
4. Connect the camera to the computer:



To connect the camera **directly** to the computer, insert the camera directly into a USB port on the computer via its USB connector.

-OR-



To connect the camera to the computer via the USB extension cable, connect one end of the USB extension cable to the USB connector on the camera and then insert the opposite end of the cable into a USB port on the computer.

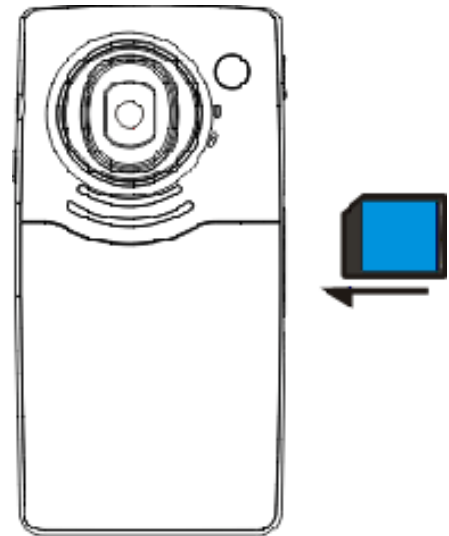
2.5 Using Data Storage Devices (SD/MMC/SDHC Cards)

To install a data storage device:

1. Power OFF the digital video camera.
2. Verify the data storage device is positioned correctly according to the orientation marking on the camera housing.
3. Insert the data storage device in the card slot until the card latches into position.

To remove a data storage device:

1. Power OFF the digital video camera.
2. Press and release the card to eject it from the card slot.
3. Grasp the card and pull outward to remove from the digital video camera.



Note: SD Cards are equipped with a write-protection switch. To be able to record and store data, ensure the switch is not set to the LOCK position.

3.0 Basic Operations

3.1 Powering ON/OFF

To power the camera ON: Press and hold the power key.

To power the camera OFF: Press the power key.

By default, if the camera is left idle for one minute it will turn itself OFF. However, the user can configure the camera to turn OFF after a different duration, or not at all, by changing the AUTO POWER OFF setting in the Setup Menu.

The camera will also turn itself OFF if the battery charge becomes too low.

3.2 Navigating Menus

Setup Menu

Use the Setup Menu to customize the following options:

- Language – allows the user to change the display language.
- Format Memory – Reformats the camera's internal memory and creates the necessary subfolders.
- Format Card - formats a data storage device installed in the camera's card slot and creates the necessary subfolders.
- TV Mode – configures whether the device plays video on the camera's display or if signals are sent through the audio/video cable attached to the earphone jack.
- Date/Time – allows the user to adjust the date and time on the device.
- Auto Power Off – allows the user to adjust the number of seconds of inactivity before the player turns itself off.
- Beep Sound – determines whether the camera makes a sound when the keys are pressed.

To access the setup menu:

1. Power ON the digital video camera.
2. Press the Delete Key to enter the setup menu.
3. Browse the options in the setup menu using the arrow keys.
4. Select options with the Shutter/Ok Key.

Mode Selector Menu

This digital video camera can record and playback both video clips and still photographs. In the playback mode, the user can view the video or still photographs recorded to the internal memory or to the installed data storage device.

To select the mode:

1. Power ON the digital video camera to automatically enter the VIDEO RECORD mode.
2. Press the MODE KEY to toggle the mode to STILL PHOTOGRAPH.
3. Press the MODE KEY a second time to move to PLAYBACK mode.
4. Press the MODE KEY a third time to return to the VIDEO RECORD mode.

3.3 Recording Video

1. Ensure sufficient memory is available on the data storage device.

NOTE: When no memory is available (i.e. the SD card is full or is locked), then the camera will not record.



WARNING: Power OFF the camera before removing or inserting the data storage device.

2. Place the digital video camera in the VIDEO RECORD mode.
3. Use the LCD display as a viewfinder.
4. Press the LEFT (◀) or Right (▶) arrow keys to toggle between the video sizes of HD (1280 X 720) and VGA (640 X 480).
5. Press the UP arrow key (▲) to ZOOM IN.
6. Press the DOWN arrow key (▼) to ZOOM OUT.
7. To begin recording, press the shutter key (📷).
8. To end recording, press the shutter key (📷) again.

3.4 Recording Still Photographs

1. Ensure sufficient memory is available on the data storage device.

NOTE: When no memory is available (i.e. the SD card is full or is locked), then the camera will not record.



WARNING: Power OFF the camera before removing or inserting the data storage device.

2. Place the digital video camera in the STILL PHOTOGRAPH mode.
3. Use the LCD display as a viewfinder.
4. Press the LEFT (◀) or Right (▶) arrow keys to toggle between the video sizes of HD (1280 X 720) and VGA (640 X 480).
5. Press the UP arrow key (▲) to ZOOM IN.
6. Press the DOWN arrow key (▼) to ZOOM OUT.
7. Press the shutter key (📷) to record individual still photographs.

3.5 Playing Back Recorded Data

To watch recorded video on the camera's LCD Display:

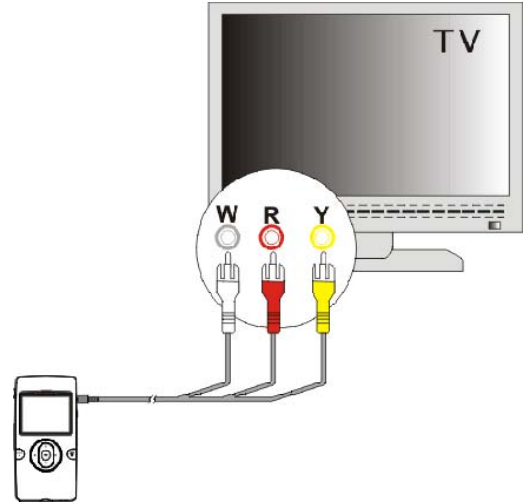
1. Place the digital video camera in the PLAYBACK mode.
2. Press the LEFT (◀) or RIGHT (▶) arrow keys to scroll through the recorded data files.
3. When the desired file is located, press the OK/shutter key (📷) to play the video.
4. During playback, the following functions are available by pressing the keys, as indicated:

▶ — RIGHT arrow key	= FAST FORWARD
◀ — LEFT arrow key	= REWIND
📷 — OK/Shutter key	= PAUSE/RESUME
▲ — UP arrow key	= ZOOM IN
▼ — DOWN arrow key	= ZOOM OUT

5. Press the MODE key to exit the PLAYBACK mode.

To watch recorded video via TV output:

1. Power OFF the digital video camera.
2. Insert the terminal of the audio/video cable into the TV output port of the camera.
3. Connect the opposite end of the audio/video cable to the TV:
 - a. Insert the yellow connector into the VIDEO IN port of the TV
 - b. Insert the red (or white) connector into the AUDIO IN port of the TV.

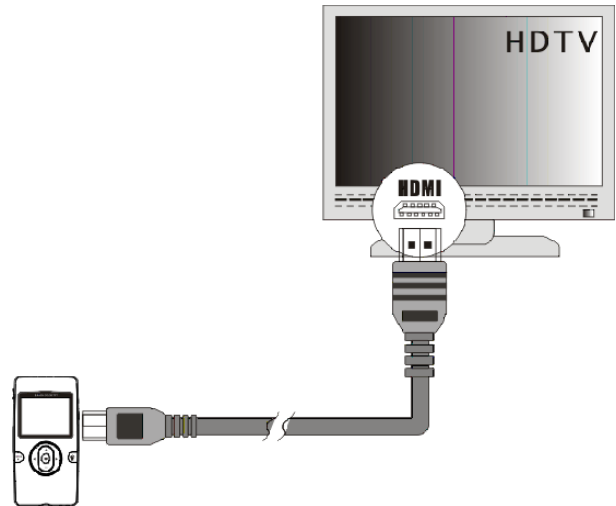


4. Power ON the digital video camera.
5. Place the digital video camera in the PLAYBACK mode.
6. Press the LEFT (◀) or RIGHT (▶) arrow keys to scroll through the recorded data files.
7. When the desired file is located, press the OK/shutter key (⏹) to play the video.
8. During playback, the following functions are available by pressing the keys, as indicated:

▶ — RIGHT arrow key	= FAST FORWARD
◀ — LEFT arrow key	= REWIND
⏹ — OK/Shutter key	= PAUSE/RESUME
▲ — UP arrow key	= ZOOM IN
▼ — DOWN arrow key	= ZOOM OUT
9. Press the MODE key to exit the PLAYBACK mode.
10. Power OFF the digital video camera.
11. Disconnect the audio/video cable from the camera.

To watch recorded video via HDMI output:

1. Power OFF the digital video camera.
2. Insert the terminal of the HDMI cable into the HDMI interface of the camera.
3. Connect the opposite end of the HDMI cable to HDMI port on an HDTV.
4. Power ON the digital video camera.
5. Place the digital video camera in the PLAYBACK mode.
6. Press the LEFT (◀) or RIGHT (▶) arrow keys to scroll through the recorded data files.
7. When the desired file is located, press the OK/shutter key (⏹) to play the video.
8. During playback, the following functions are available by pressing the keys, as indicated:
 - ▶ — RIGHT arrow key = FAST FORWARD
 - ◀ — LEFT arrow key = REWIND
 - ⏹ — OK/Shutter key = PAUSE/RESUME
 - ▲ — UP arrow key = ZOOM IN
 - ▼ — DOWN arrow key = ZOOM OUT
9. Press the MODE key to exit the PLAYBACK mode.
10. Power OFF the digital video camera.
11. Disconnect the audio/video cable from the camera.





NOTE: During HDMI output, the digital video camera can only enter PLAYBACK mode.

To view recorded still photographs:

1. Place the digital video camera in the PLAYBACK mode.
2. Press the LEFT (◀) or RIGHT (▶) arrow keys to scroll through the recorded data files.
3. When the desired file is located, press the OK/Shutter key (⏹) to view the still photograph.
4. After selecting the desired file, the following functions are available by pressing the keys, as indicated:

▼ — DOWN arrow key = ZOOM OUT

▲ — UP arrow key = ZOOM IN

  — OK/Shutter key = PAN

NOTE: In ZOOM IN, pressing the OK/Shutter key (⏹) will enter the PAN mode, allowing the user to move the photograph horizontally or vertically in the LCD display. In the PAN mode, the following functions are available by pressing the keys, as indicated:

▶ — RIGHT arrow key = Moves user's view to the RIGHT

◀ — LEFT arrow key = Moves user's view to the LEFT

▲ — UP arrow key = Moves user's view UP

▼ — DOWN arrow key = Moves user's view DOWN

5. Press the MODE key to exit the PLAYBACK mode.

3.6 Deleting Recorded Data

1. Place the digital video camera in the PLAYBACK mode.
2. Press the LEFT (◀) or RIGHT (▶) arrow keys to scroll through the recorded data files.
3. When the desired file is located, press the Delete key (🗑️) to enter the delete menu.
4. Press the LEFT (◀) or RIGHT (▶) arrow keys to select the desired function.



- ▶ — RIGHT arrow key = Deletes only the image data currently being displayed
- ◀ — LEFT arrow key = Deletes all image data stored on the data storage device

5. Press the OK/Shutter key (📷) to execute the selected function.
6. Press the Delete key (🗑️) to exit the delete menu.

3.7 Downloading Data Files to a Computer

1. Connect the camera to a computer via the USB connection.
2. Double-click "My Computer" on the desktop of the computer to enter Windows Explorer.
3. Locate and double-click the "Removable Disk" drive associated with the eCam digital video camera.
4. Locate and open the folder titled "\DCIM\100MEDIA."
5. In the 100MEDIA folder, locate the desired data file(s) to be downloaded.
6. Click and drag the desired data file(s) from the 100MEDIA folder into the target folder on the hard drive of the computer.

NOTE: Xvid Codec and ArcSoft MediaImpression must be installed to view or edit video recorded with the digital video camera

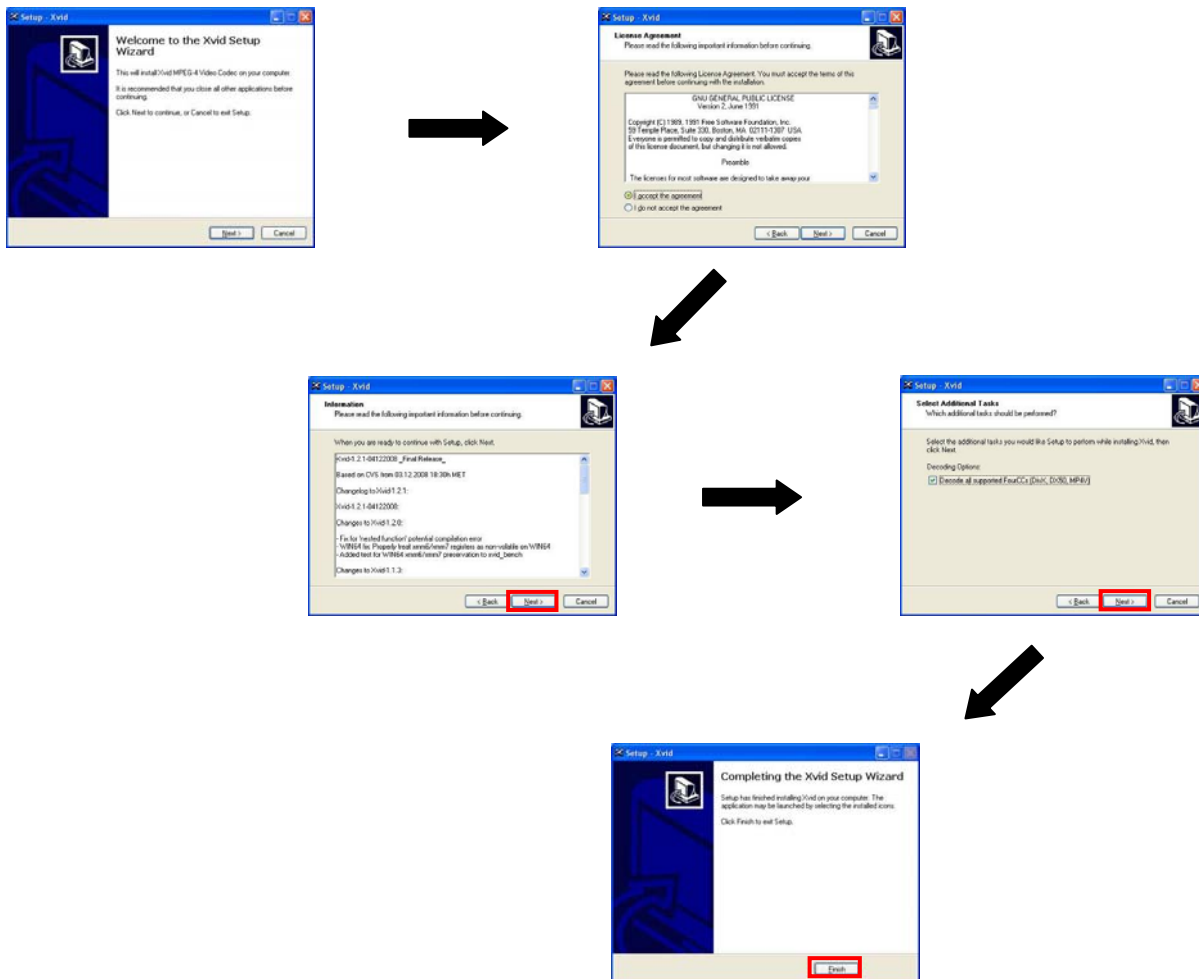
4.0 Editing Recorded Data

4.1 Installing Xvid Codec

1. Place the included CD into the computer's disc drive.

NOTE: If the software installer does not launch automatically:

- a. Click *Start > My Computer*, and then click the drive corresponding to the disc drive.
 - b. Double click **autorun.exe** to launch the software installer.
2. From the installation menu, click *"Install Xvid Codec"* and follow the on-screen instructions.



4.2 Installing ArcSoft MediaImpression

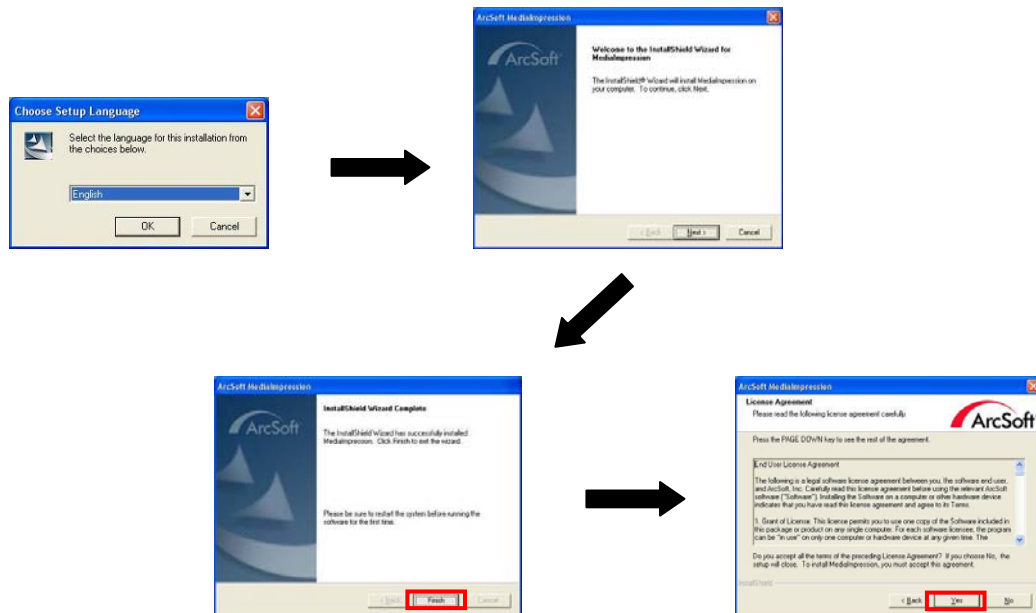
1. Place the included CD into the computer's disc drive.

NOTE: If the software installer does not launch automatically:

- a. Click *Start > My Computer*, and then click the drive corresponding to the disc drive.
- b. Double click **autorun.exe** to launch the software installer.




2. From the installation menu, click *"Install MediaImpression"* and follow the on-screen instructions.



3. After installation, restart the computer.

4.3 Using ArcSoft MediaImpression

1. Start ArcSoft MediaImpression:

- Double-click the MediaImpression icon () on the desktop.



-OR-


- Click *Start > Programs > ArcSoft MediaImpression > MediaImpression*.

2. From the MediaImpression main menu, select “Import”.



3. From the import window, select the digital video camera storage location from the drop-down menu.



4. From the import window, select the folder icon () to browse and set the location of the destination folder.



5. Select the desired video file.



6. Click “import” to store the selected file in the output location.



7. Click “Go to Start Page” to return to the main screen.



4.4 Posting Media to YouTube

1. From the MediaImpression main menu, click “Video” or “All Media” to access the “YouTube” function.



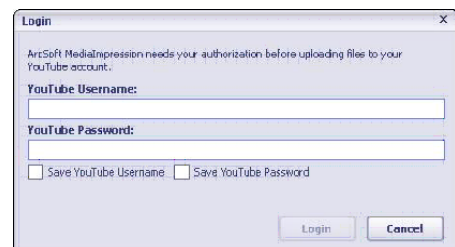
2. Select the desired file.



3. Click “Upload to YouTube.”



4. Enter login information for YouTube to complete the execution of the upload.



5.0 Product Specifications

Image Sensor	1.3 Mega Pixels
Function Mode	Record video, Record still photo, Playback, Mobile Disk
Lens	F2.8, f = 3.1mm
Focus Range	120cm ~ infinite
Digital Focusing	4X
Shutter	Electronic
LCD Display	2.0 inch TFT Display
Resolution	Video: HD (1280 x 720), VGA (640 x 480) Still Photo: 5M (2592 x 1944), 3M (2048 x 1536), 1.3M (1280 x 960)
White Balance	Automatic
Exposure	Automatic
File Format	MOV
Storage Media	SD/MMC/SDHC Card (max 16GB)
USB Port	USB 2.0 Port
Dimension (L x W x H)	110mm x 57mm x 19.5mm