

## **Oracle® Fusion Middleware**

Getting Started with Oracle Data Integrator 12c

*Virtual Machine Installation Guide*

December 2014

Copyright © 2010, 2015, Oracle and/or its affiliates. All rights reserved.

Author: ODI Product Management

This software and related documentation are provided under a license agreement containing restrictions on use and disclosure and are protected by intellectual property laws. Except as expressly permitted in your license agreement or allowed by law, you may not use, copy, reproduce, translate, broadcast, modify, license, transmit, distribute, exhibit, perform, publish, or display any part, in any form, or by any means. Reverse engineering, disassembly, or decompilation of this software, unless required by law for interoperability, is prohibited.

The information contained herein is subject to change without notice and is not warranted to be error-free. If you find any errors, please report them to us in writing.

If this is software or related documentation that is delivered to the U.S. Government or anyone licensing it on behalf of the U.S. Government, the following notice is applicable:

U.S. GOVERNMENT RIGHTS Programs, software, databases, and related documentation and technical data delivered to U.S. Government customers are "commercial computer software" or "commercial technical data" pursuant to the applicable Federal Acquisition Regulation and agency-specific supplemental regulations. As such, the use, duplication, disclosure, modification, and adaptation shall be subject to the restrictions and license terms set forth in the applicable Government contract, and, to the extent applicable by the terms of the Government contract, the additional rights set forth in FAR 52.227-19, Commercial Computer Software License (December 2007). Oracle America, Inc., 500 Oracle Parkway, Redwood City, CA 94065.

This software or hardware is developed for general use in a variety of information management applications. It is not developed or intended for use in any inherently dangerous applications, including applications that may create a risk of personal injury. If you use this software or hardware in dangerous applications, then you shall be responsible to take all appropriate fail-safe, backup, redundancy, and other measures to ensure its safe use. Oracle Corporation and its affiliates disclaim any liability for any damages caused by use of this software or hardware in dangerous applications.

Oracle and Java are registered trademarks of Oracle and/or its affiliates. Other names may be trademarks of their respective owners.

Intel and Intel Xeon are trademarks or registered trademarks of Intel Corporation. All SPARC trademarks are used under license and are trademarks or registered trademarks of SPARC International, Inc. AMD, Opteron, the AMD logo, and the AMD Opteron logo are trademarks or registered trademarks of Advanced Micro Devices. UNIX is a registered trademark of The Open Group.

This software or hardware and documentation may provide access to or information on content, products, and services from third parties. Oracle Corporation and its affiliates are not responsible for and expressly disclaim all warranties of any kind with respect to third-party content, products, and services. Oracle Corporation and its affiliates will not be responsible for any loss, costs, or damages incurred due to your access to or use of third-party content, products, or services.

# Table of Contents

Document Scope .....	4
Introduction .....	4
Oracle Data Integrator .....	4
Oracle Data Integrator Getting Started Virtual Machine.....	4
Technical Deployment .....	5
Oracle VirtualBox Introduction .....	5
Installation and Configuration .....	5
Download VirtualBox Software and User Manual .....	5
Extract the VirtualBox VM.....	6
Import the Appliance into VirtualBox .....	7
Customize VirtualBox Appliance Settings .....	10
Memory (optional).....	10
Shared Folders (optional).....	10
Starting the ODI Getting Started Appliance.....	13
Beginning the Getting Started Tutorial .....	14
Appliance Credentials .....	15
Appliance Unix OS.....	15
Oracle Product Access Information .....	15
Learn More.....	16

## Document Scope

The following document provides instruction to install the *Oracle Data Integrator (ODI) 12c Getting Started Virtual Machine (VM)*. The VM is intended to be used with the ODI 12c Getting Started Guide. For more information about the Getting Started Guide, please visit:

<http://www.oracle.com/technetwork/middleware/data-integrator/overview/index.html>

## Introduction

### ***Oracle Data Integrator***

Oracle Data Integrator (ODI) Enterprise Edition 12c delivers unique next-generation, Extract Load and Transform (E-LT) technology that improves performance, reduces data integration costs, even across heterogeneous systems. Unlike conventional ETL tools, Oracle Data Integrator EE offers the productivity of a declarative design approach, as well as the benefits of an active integration platform for seamless batch and real-time integration. In addition, hot-pluggable Knowledge Modules provide modularity, flexibility, and extensibility.

ODI addresses multiple enterprise data integration needs including:

- Data Warehousing and Business Intelligence
- Service-Oriented Architecture
- Master Data Management (MDM)
- Migration and Consolidations
- Modernization Initiatives

The demonstration highlights how ODI can be used to populate a Data Warehouse schema. Several facts and dimensions are loaded to demonstrate key ETL capabilities (complex transformations, slowly changing dimensions, incremental updates, constraints checking etc.), ease of use and productivity.

### ***Oracle Data Integrator Getting Started Virtual Machine***

The virtual machine (entitled ODI 12c Getting Started) is a stand-alone environment for running Oracle Data Integration products. The purpose is to provide a complete environment for learning and demonstrating key Oracle Data Integration technologies.

The virtual machine includes the following products:

- Oracle Database 11g Enterprise Edition (11.2.0.4)
- JVM 1.7.0\_15
- Oracle Data Integrator (12.1.3.0.0)
- Oracle GoldenGate (12.1.2.0.0)

## Technical Deployment

The ODI virtual machine is delivered as an Oracle VirtualBox appliance and requires both the ODI 12c Getting Started archive and an installation of the Oracle VirtualBox product. Further reference to the terms VM (Virtual Machine) and appliance in this document are synonymous.

Following are instructions to continue with the installation and configuration.

## Oracle VirtualBox Introduction

<https://www.virtualbox.org/manual/ch01.html>

VirtualBox is a cross-platform virtualization application. What does that mean? For one thing, it installs on your existing Intel or AMD-based computers, whether they are running Windows, Mac, Linux or Solaris operating systems. Secondly, it extends the capabilities of your existing computer so that it can run multiple operating systems (inside multiple virtual machines) at the same time. So, for example, you can run Windows and Linux on your Mac, run Windows Server 2008 on your Linux server, run Linux on your Windows PC, and so on, all alongside your existing applications. You can install and run as many virtual machines as you like -- the only practical limits are disk space and memory.

## Installation and Configuration

### Download VirtualBox Software and User Manual

Go to the following URL to download the appropriate VirtualBox binary and documentation:

<https://www.virtualbox.org/wiki/Downloads>

Figure 1 Oracle VirtualBox Download



To install the VirtualBox software, simply click on the link for the appropriate platform (i.e. Windows hosts), and you will be guided to install the software.

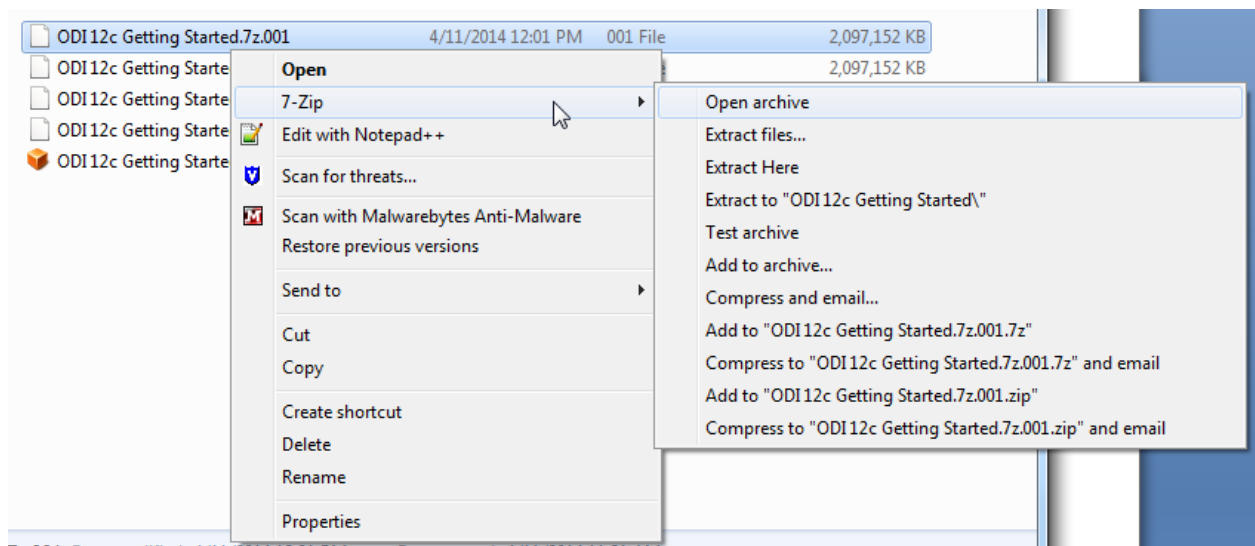
## ***Extract the VirtualBox VM***

After downloading the archive files, extract the first archive file (for example, using 7-Zip). The remaining archive files will automatically unzip. The extracted file, **ODI 12c Getting Started.ova** will be used to create the virtual machine through a VirtualBox appliance import.

Following is an example on using 7-Zip to extract the VM (only need to extract the 1<sup>st</sup> file).

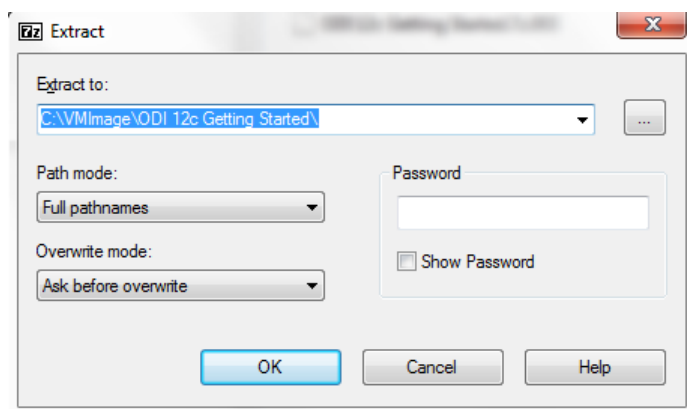
1. From windows explorer, select the first file of the archive and right click to select the extraction tool, such as 7-Zip.

***Figure 2 Extracting the VirtualBox Archive***




2. Select a target directory for the VirtualBox appliance:

***Figure 3 Extraction location***



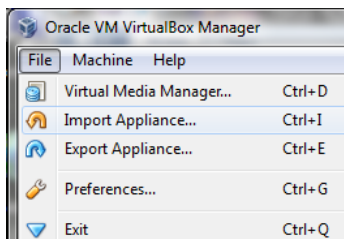
The extracted VirtualBox appliance import will be created in the designated directory:

*Figure 4 ODI 12c VirtualBox Import name*

Name	Date modified	Type	Size
 ODI12c Getting Started.ova	4/11/2014 11:17 AM	Open Virtualizatio...	8,371,789 KB

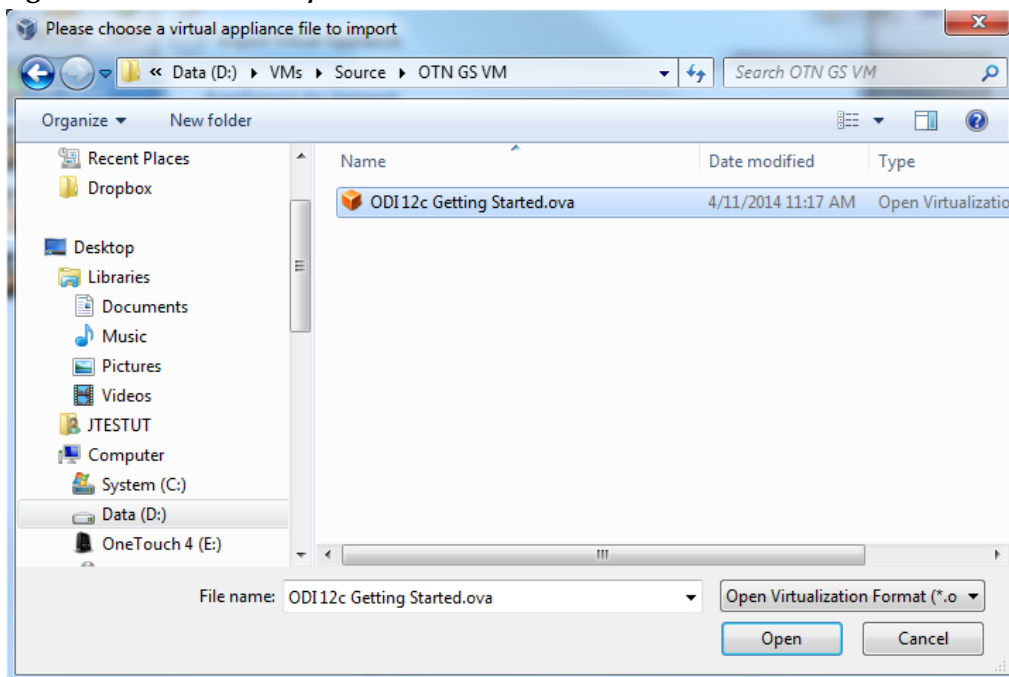
## Import the Appliance into VirtualBox

1. Start Oracle VM VirtualBox Manager
2. Click on **File** and then **Import Appliance**.

*Figure 5 VirtualBox Import*

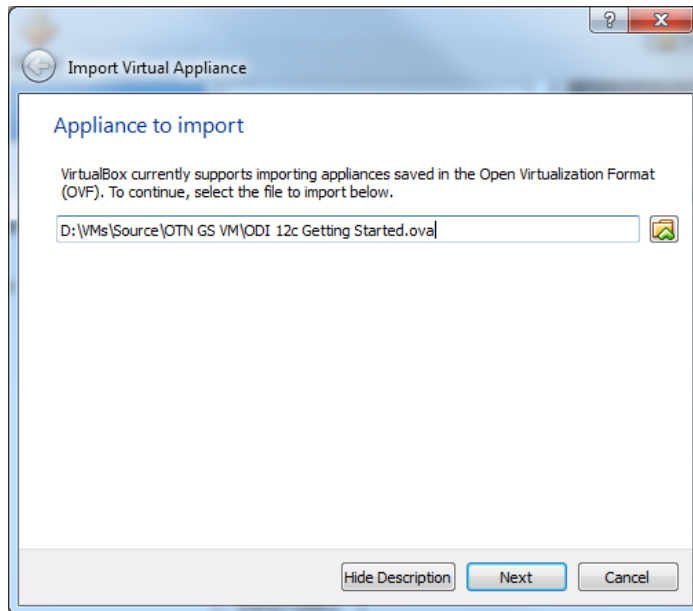
The Appliance Import Wizard window appears.

3. Click **Open Appliance**.
4. Specify the OVA file location and click **Open** to choose the VirtualBox file.

*Figure 6 VirtualBox Import Selection*

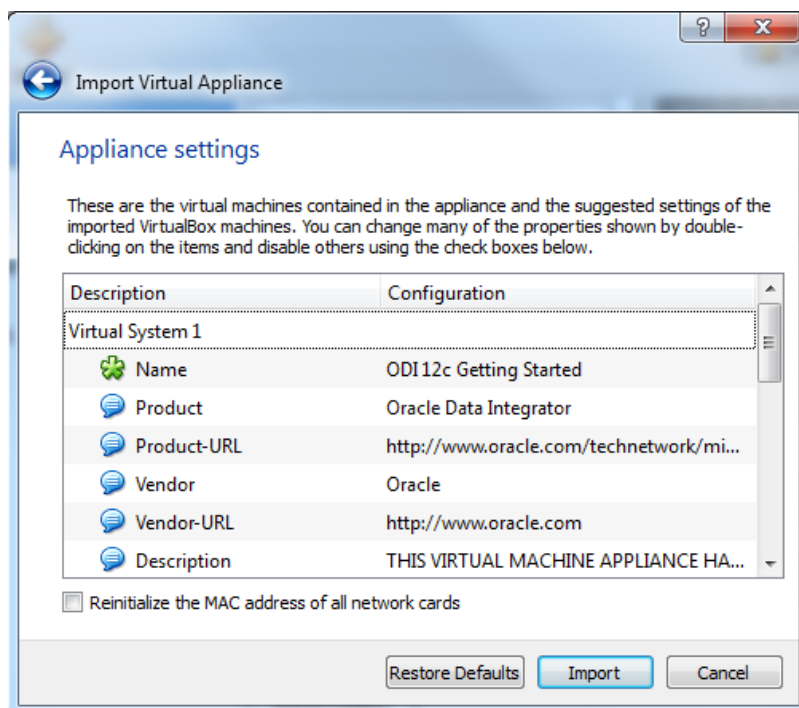
5. Confirm the file selection and click **Next**.

**Figure 7** *Appliance (VM) confirmation*



6. Confirm the Appliance (VM) settings and click on Import.

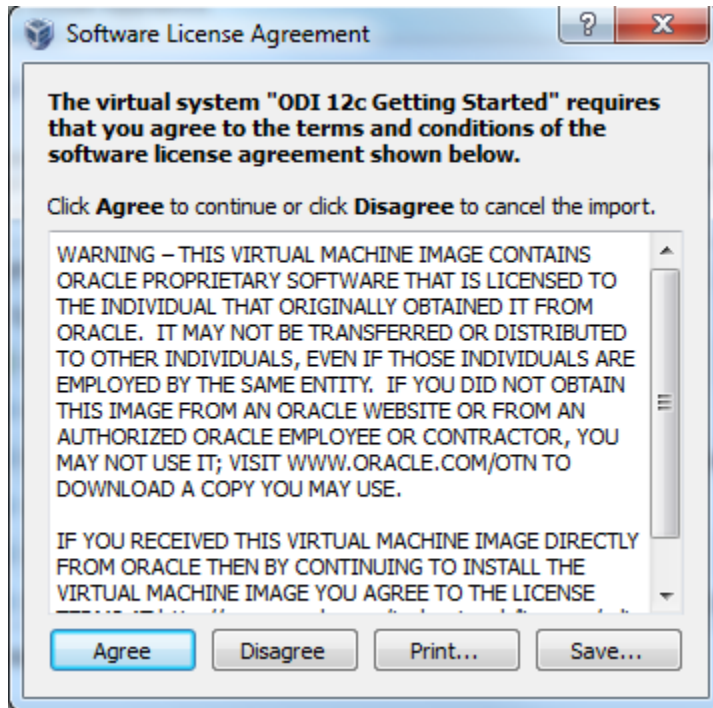
**Figure 8** *Appliance (VM) settings*





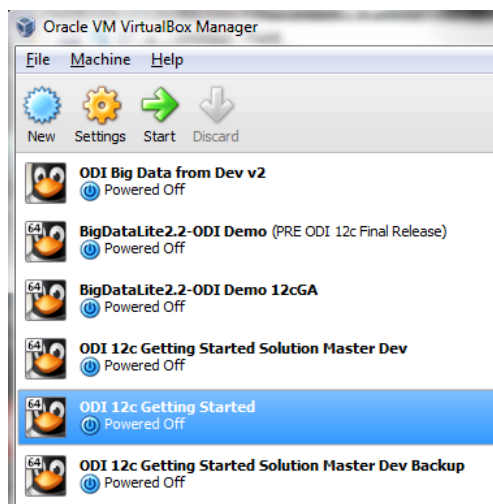
- Click on Agree in the Software License Agreement window to start the import process. The license terms are available at <http://www.oracle.com/technetwork/licenses/odi-vm-license-2035237.html>.

*Figure 9 Software License Agreement screen*



The import is complete and the appliance (virtual machine) is now available in the VirtualBox Manager. The appliance may be started by clicking **Start** or customized further for your environment.

*Figure 10 Available VirtualBox Appliances*



## Customize VirtualBox Appliance Settings

Depending on the host operating system limitations, network configuration or file sharing requirements; VirtualBox appliance settings may be modified. For further information about VirtualBox, please review the VirtualBox documentation:

<https://www.virtualbox.org/wiki/Documentation>

To continue to customize settings for the appliance, highlight the **ODI 12c Getting Started** appliance and click on the **Settings** icon in the menu bar as shown on Figure 10

### Memory (optional)

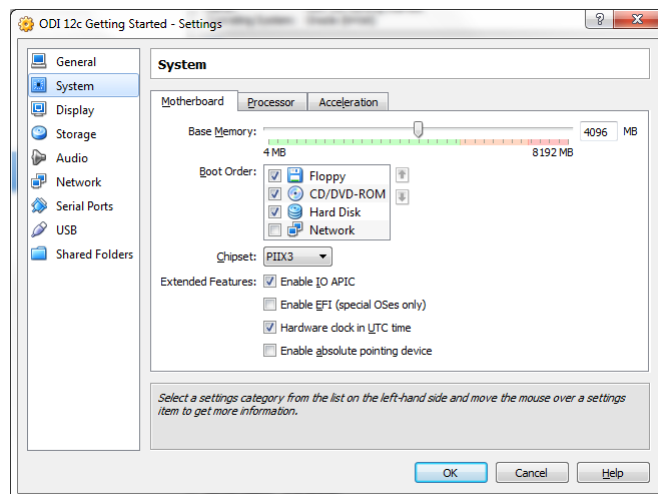
The recommended amount of memory for the VirtualBox is 4GB. Typically, host machines may have 8GB of total memory where 4GB may be ideal.

**Note:** In situations of where less memory is available on the physical host, the memory for the ODI Getting Started appliance may be reduced to 2GB with some additional shared memory settings in the unix appliance itself. The following command will create a shared memory space to enable an Oracle database to start in low memory situations:

```
$ mount -t tmpfs shmfs -o size=2g /dev/shm
```

To change the appliance memory setting, click on **System** on the left panel.

**Figure 11** VirtualBox Appliance settings



### Shared Folders (optional)

Shared Folders may be used to move files between the host operating system and the VirtualBox Appliance. An example may be moving future ODI projects into the appliance. The project could potentially be another ODI tutorial, which is delivered as a separately downloadable ODI Smart Import.

Use of shared folders begins with defining a locally available directory on your computer (host) and one on the VirtualBox appliance, along with a share name.

---

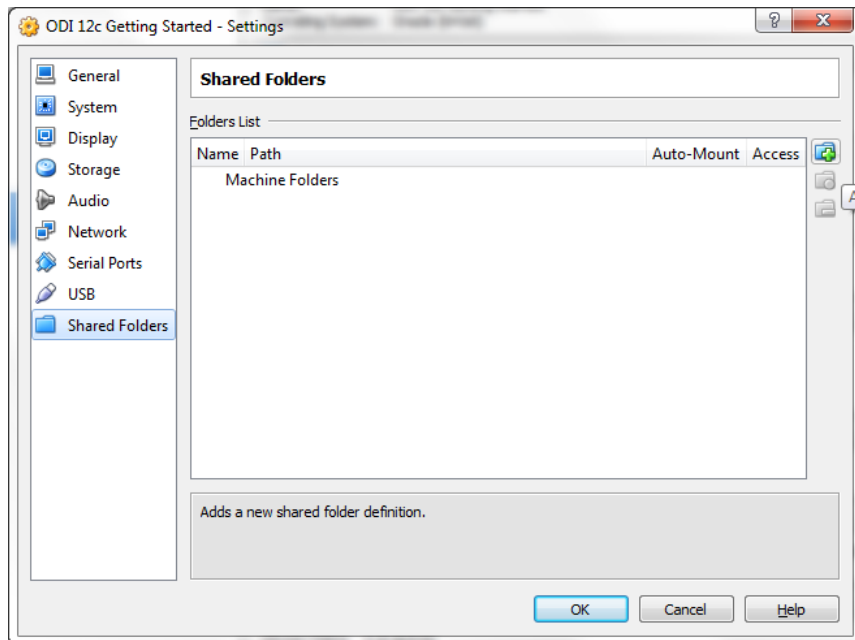
**Note:** A best practice is to use the same string for the share name and folder names, for example ODIsared.

---

To configure a shared folder:

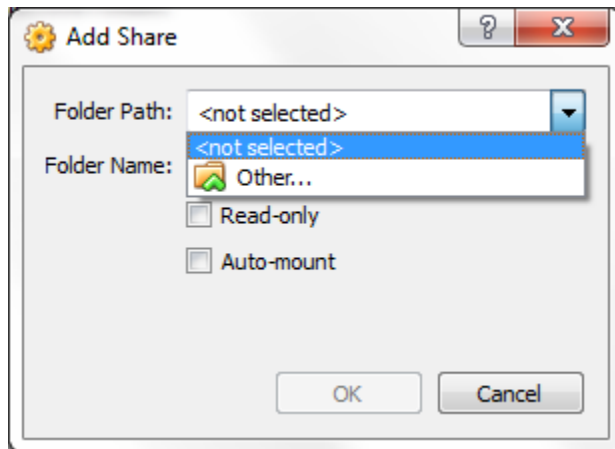
1. Click on **Shared Folders** shortcut on the left panel.
2. Click on the **Add Folder** icon on the right:

*Figure 12 Configuring Shared Folders*



3. The Add Share dialog appears, select **Other...** for the **Folder Path** and the following options.

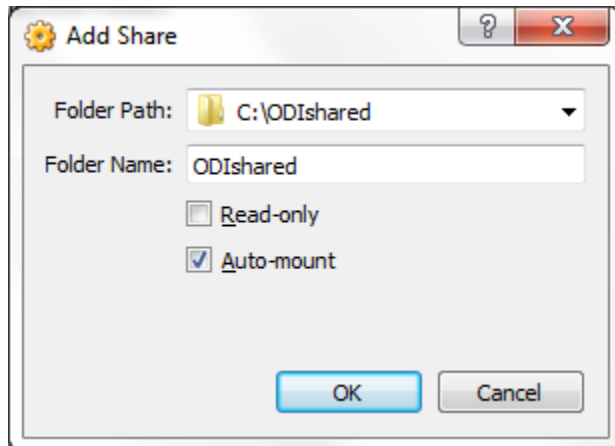
*Figure 13 Shared Folder Options*



In this example, the following values are used:

- **Folder Path:** C:\ODIshared
- **Folder Name:** ODIshared
- **Auto-mount:** checked

*Figure 14 Using ODIshared as the local folder and share name*



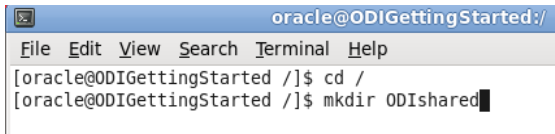
4. The Virtual Box share has been configured. A directory is required to be created in the ODI Getting Started Appliance (VM).

---

**Note:** Logon instructions to the Appliance (VM) are available further in this document.

---

- Start the ODI Getting Started VM
- In the VM, open a terminal window.
- su to super user (root) – password **oracle**
- Create the directory, for example  
\$ **mkdir ODIshared**



```

oracle@ODIGettingStarted:/
File Edit View Search Terminal Help
[oracle@ODIGettingStarted /]$ cd /
[oracle@ODIGettingStarted /]$ mkdir ODIsared

```

---

**Note:** Examine the permissions of the directory and modify accordingly. As this is a tutorial, sharing to all users and groups may be appropriate

**\$chmod -777 ODIsared**

---

5. To access the shared directory from the Getting Started Appliance, a unix **mount** must be performed from a terminal shell (as root)

mount follows the syntax:

*\$ mount [-t fstype] something somewhere*

The mount for the ODI Getting Started Appliance and the example in this document would be:

**\$ mount -t vboxsf ODIsared ODIsared**

The shared folder is now available between the host operating system and the ODI Getting Started virtual box appliance.

## Starting the ODI Getting Started Appliance

To start the appliance from within the Oracle VirtualBox client:

- Double-click on the ODI 12c Getting Started entry in the list within the Manager window
- or
- Select its entry in the list in the Manager window and press the “Start” button at the top

Once started, the appliance will boot into Oracle Linux and the desktop will be displayed.

## Beginning the Getting Started Tutorial

The Getting Started appliance desktop holds five key objects to begin:

*Table 1 ODI Getting Started 12c Desktop Objects*

Object	Purpose
ODI 12c Getting Started Guide.pdf	This document provides the introduction and exercises to drive the tutorial. Open this first. Check the ODI OTN Overview page for updates to the document in the future and additional tutorial information.
ODI 12c Studio	<a href="http://www.oracle.com/technetwork/middleware/data-integrator/overview/index.html">http://www.oracle.com/technetwork/middleware/data-integrator/overview/index.html</a> Double click this launcher to start ODI Studio. Provide some time for the studio to load, multiple clicks may result in more than one Studio load and further time.
Oracle's Home	A shortcut to the default user's directory.
Information about this machine	A text file listing basic attributes of the machine.

1. To begin with the ODI Getting Started Tutorial, open the ODI 12c Getting Started Guide on the desktop and follow the self paced instructions.
2. Start ODI Studio using the desktop launcher.




---

Note: The startup script for ODI may alternatively be found in:  
`/u01/Middleware/Oracle_Home_1213/odi/studio/odi.sh`

---

**The ODI 12c Getting Started Appliance and tutorial is now ready to be used!**

## *Appliance Credentials*

### Appliance Linux OS

Linux	Default user – <b>oracle</b>	/	password: <b>oracle</b>
	Su user – <b>root</b>	/	password: <b>oracle</b>

### Oracle Product Access Information

Oracle RDBMS	SID: ORCL		
	Port: 1521		
	<b>system</b> user	/	password: <b>oracle</b>
	<b>sys</b> user	/	password: <b>oracle</b>
	ODI repository user - <b>prod_odi_repo</b>	/	password: <b>oracle</b>
	ODI sample data user – <b>odi_demo</b>	/	password: <b>oracle</b>
Oracle Data Integrator	ODI username: <b>SUPERVISOR</b>		
	ODI password: <b>SUPERVISOR</b>		

## Learn More

You can learn more about creating your own integration projects with Oracle Data Integrator in the guides listed in Table 2

**Table 2 Oracle Data Integrator Documentation**

Document	Description
<i>Oracle Fusion Middleware Installation Guide for Oracle Data Integrator</i>	Provides Oracle Data Integrator installation information including pre-installation requirements and troubleshooting.
<i>Oracle Fusion Middleware Upgrade Guide for Oracle Data Integrator</i>	Provides 12c upgrade information for Oracle Data Integrator.
<i>Oracle Fusion Middleware Developer's Guide for Oracle Data Integrator</i>	Provides guidelines for developers interested in using Oracle Data Integrator for integration projects.
<i>Oracle Fusion Middleware Connectivity and Knowledge Modules Guide for Oracle Data Integrator</i>	Describes Oracle Data Integrator Knowledge Modules and technologies and how to use them in integration projects.
<i>Oracle Fusion Middleware Knowledge Module Developer's Guide for Oracle Data Integrator</i>	Describes how to develop your own Knowledge Modules for Oracle Data Integrator.

You can find all Oracle Data Integrator documentation on the Oracle Data Integrator documentation page on the Oracle Technology Network, at:

<http://www.oracle.com/technetwork/middleware/data-integrator/documentation/index.html>

The Oracle Data Integrator home page on the Oracle Technology Network also provides the following resources to learn more about other features of Oracle Data Integrator:

- View the Oracle by Example Series for ODI. The Oracle by Example (OBE) series provides step-by-step instructions on how to perform a variety of tasks using Oracle Data Integrator Suite.

To learn more about the new features that have been introduced in Oracle Data Integrator 12c, see "What's New in Oracle Data Integrator?" in the Oracle Fusion Middleware Developer's Guide for Oracle Data Integrator and the Release Notes.

Thank you for choosing Oracle Data Integrator





ODi12c Getting Started VM Installation Guide  
December 2014

Oracle Corporation  
World Headquarters  
500 Oracle Parkway  
Redwood Shores, CA 94065  
U.S.A.

Worldwide Inquiries:  
Phone: +1.650.506.7000  
Fax: +1.650.506.7200

[oracle.com](http://oracle.com)



Oracle is committed to developing practices and products that help protect the environment

Copyright © 2015, Oracle and/or its affiliates. All rights reserved. This document is provided for information purposes only and the contents hereof are subject to change without notice. This document is not warranted to be error-free, nor subject to any other warranties or conditions, whether expressed orally or implied in law, including implied warranties and conditions of merchantability or fitness for a particular purpose. We specifically disclaim any liability with respect to this document and no contractual obligations are formed either directly or indirectly by this document. This document may not be reproduced or transmitted in any form or by any means, electronic or mechanical, for any purpose, without our prior written permission.

Oracle and Java are registered trademarks of Oracle and/or its affiliates. Other names may be trademarks of their respective owners.

Intel and Intel Xeon are trademarks or registered trademarks of Intel Corporation. All SPARC trademarks are used under license and are trademarks or registered trademarks of SPARC International, Inc. AMD, Opteron, the AMD logo, and the AMD Opteron logo are trademarks or registered trademarks of Advanced Micro Devices. UNIX is a registered trademark of The Open Group. 0612

**Hardware and Software, Engineered to Work Together**