



RabbitCore RCM3100

C-Programmable Module

Getting Started Manual

019-0114 • 040515-C

RabbitCore RCM3100 Getting Started Manual

Part Number 019-0114 • 040515–C • Printed in U.S.A.

©2002–2004 Z-World Inc. • All rights reserved.

Z-World reserves the right to make changes and improvements to its products without providing notice.

Trademarks

Rabbit and Rabbit 3000 are registered trademarks of Rabbit Semiconductor.

RabbitCore is a trademark of Rabbit Semiconductor.

Dynamic C is a registered trademark of Z-World Inc.

Z-World, Inc.

2900 Spafford Street
Davis, California 95616-6800
USA

Telephone: (530) 757-3737
Fax: (530) 757-3792

www.zworld.com

Rabbit Semiconductor

2932 Spafford Street
Davis, California 95616-6800
USA

Telephone: (530) 757-8400
Fax: (530) 757-8402

www.rabbitsemiconductor.com

Table of Contents

Chapter 1. Introduction & Overview	1
1.1 Rabbit 3000 Microprocessor	1
1.2 RCM3100 Series RabbitCore Modules.....	2
1.2.1 Physical & Electrical Specifications	3
1.3 Development Software.....	4
1.4 How to Use This Manual	4
1.4.1 Additional Product Information	4
1.4.2 Additional Reference Information	4
1.4.3 Using Online Documentation	5
Chapter 2. Hardware Setup	7
2.1 Development Kit Contents	7
2.2 Prototyping Board	8
2.2.1 Prototyping Board Features	9
2.3 Development Hardware Connections	11
2.3.1 Attach Module to Prototyping Board	11
2.3.2 Connect Programming Cable	12
2.3.3 Connect Power	13
2.4 Run a Sample Program	14
2.5 Where Do I Go From Here?.....	14
2.5.1 Technical Support	14
Chapter 3. Software Installation & Overview	15
3.1 An Overview of Dynamic C	15
3.1.1 Hardware Requirements	16
3.2 Installing Dynamic C	17
3.2.1 Program & Documentation File Location	17
3.2.2 Installation Type	18
3.2.3 Select COM Port	19
3.2.4 Desktop Icons	19
3.3 Starting Dynamic C.....	20
3.3.1 Communication Error Messages	20
3.4 Sample Programs	21

Notice to Users	23
Index	25
Schematics	27

1. INTRODUCTION & OVERVIEW

The Rabbit 3000 is a modern 8-bit microprocessor that is the central element of a complete and fully supported embedded design system that includes development tools, software libraries, core modules, sample designs, a parts store, and readily available expert, human support.

This Development Kit has the essentials that you need to design your own microprocessor-based system, and includes a complete Dynamic C software development system. This Development Kit contains a powerful RabbitCore module (the RCM3110) and Prototyping Board that will allow you to evaluate the Rabbit 3000 and to prototype circuits that interface to a Rabbit 3000 microprocessor. You will also be able to write and test software for the RCM3100 series RabbitCore modules.

1.1 Rabbit 3000 Microprocessor

The Rabbit 3000 microprocessor shares its instruction set and conceptual design with the successful Rabbit 2000. The instruction set is based on the Z80/Z180, but has been adapted to be C-friendly and to allow a megabyte of code space. Rabbit processors are fast with compact code.

The Rabbit 3000 has an extensive array of on-chip peripherals including 6 serial ports, 56 parallel I/O pins, motion control interfaces, a time/date clock, glueless memory and I/O interfacing, a slave interface, and in-circuit programming. Low-EMI features such as a clock spectrum spreader eliminate schedule-wrecking EMI problems.

Software development support is based on Z-World's Dynamic C, and includes extensive libraries for chip peripherals and more.

Refer to the ***Rabbit 3000 Microprocessor User's Manual*** for complete information on the Rabbit 3000 microprocessor and complete specifications.

1.2 RCM3100 Series RabbitCore Modules

The RCM3100 series RabbitCore modules are designed for use on a customer-supplied motherboard that supplies power and interfaces to real-world I/O devices. Their two 34-pin connection headers provide 54 digital parallel user I/O lines, shared with five serial ports, along with control lines. A sixth serial port and one additional I/O line are available on the programming header.

A fully enabled slave port permits glueless master-slave interface with another Rabbit-based system. The slave port may also be used with non-Rabbit systems, although additional logic may be required.

The RCM3100 series is equipped with 256K–512K flash memory and 128K–512K static RAM.

There are two production models in the RCM3100 series. If the standard models do not serve your needs, other variations can be specified and ordered in production quantities. Contact your Z-World or Rabbit Semiconductor sales representative for details.

Table 1 below highlights the differences between the two models in the RCM3100 family.

Table 1. RCM3100 Versions

Feature	RCM3100	RCM3110
Microprocessor	Rabbit 3000 running at 29.4 MHz	
Flash Memory	2 × 256K	256K
Static RAM	512K	128K
Serial Ports	6 shared high-speed, CMOS-compatible ports: 6 are configurable as asynchronous serial ports; 4 are configurable as clocked serial ports (SPI); 2 are configurable as SDLC/HDLC serial ports; 1 asynchronous clocked serial port is dedicated for programming	

NOTE: The RCM3110 is the RabbitCore module supplied with the Development Kit.

In addition, there is an RCM3000 series of RabbitCore modules that includes Ethernet connectivity.

The RabbitCore modules can be programmed locally, remotely, or via a network using appropriate interface hardware.

1.2.1 Physical & Electrical Specifications

Table 2 lists the basic specifications for the RCM3100.

Table 2. RCM3100 Specifications

Specification	Data
Power Supply	3.15 – 3.45 V DC (75 mA at 29.4 MHz clock speed)
Size	1.65" × 1.85" × 0.55" (42 mm × 47 mm × 14 mm)
Environmental	–40°C to 85°C, 5–95% humidity, noncondensing

NOTE: For complete product specifications, see Appendix A in the *RabbitCore RCM3100 User's Manual*.

The RCM3100 modules have two 34-pin headers to which cables can be connected, or which can be plugged into matching sockets on a production device. The pinouts for these connectors are shown in Figure 1 below.

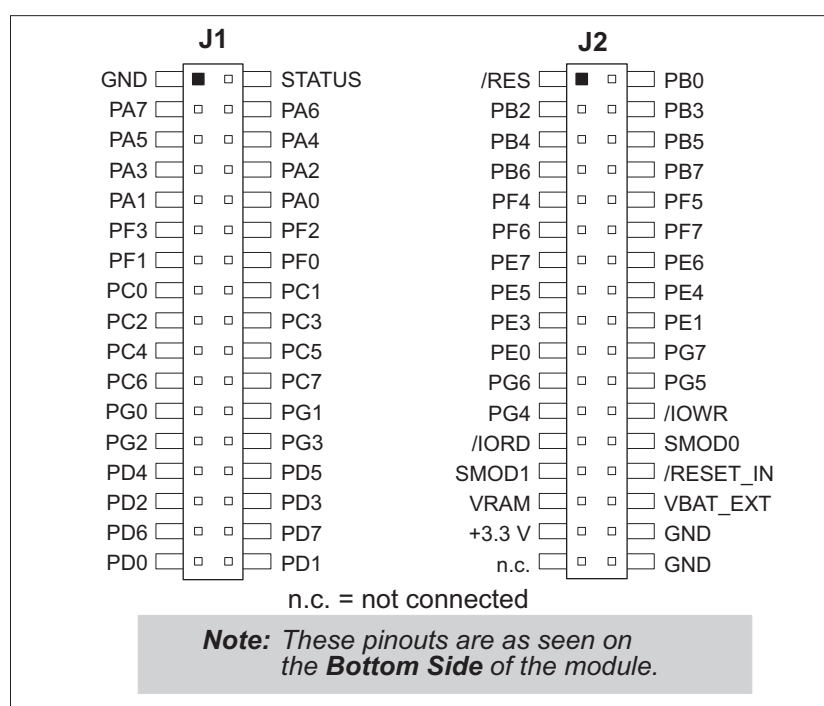


Figure 1. RCM3100 Connector Pinout

1.3 Development Software

The RCM3100 module uses the Dynamic C development environment for rapid creation and debugging of runtime applications. Dynamic C provides a complete development environment with integrated editor, compiler and debugger. It interfaces directly with the target system, eliminating the need for complex and unreliable in-circuit emulators.

Dynamic C must be installed on a Windows workstation with at least one free serial USB or COM port for communication with the target system.

NOTE: An RS-232/USB converter is required if you intend to use a USB port on your computer. Z-World and Rabbit Semiconductor offer a suitable converter—more information is available at www.rabbitsemiconductor.com, or you may telephone your Z-World/Rabbit Semiconductor sales representative or authorized distributor.

See Chapter 3., “Software Installation & Overview,” for complete information on installing Dynamic C.

NOTE: The RCM3100 module requires Dynamic C v7.25 or later for development. A compatible version is included on the Development Kit CD-ROM.

1.4 How to Use This Manual

This *Getting Started* manual is intended to give users a quick but solid start with the RCM3100 series modules. It does not contain detailed information on the module hardware capabilities or the Dynamic C development environment. Most users will want more detailed information on some or all of these topics in order to put the RCM3100 module to effective use.

1.4.1 Additional Product Information

Detailed information about the RCM3100 will be found in the *RabbitCore RCM3100 User's Manual*, provided on the accompanying CD-ROM in both HTML and Adobe PDF format.

Some advanced users may choose to skip the rest of this introductory manual and proceed directly with the detailed hardware and software information in the *User's Manual*.

TIP: We recommend that anyone not thoroughly familiar with Z-World controllers at least read through the rest of this manual to gain the necessary familiarity to make use of the more advanced information.

1.4.2 Additional Reference Information

In addition to the product-specific information contained in the *RabbitCore RCM3100 User's Manual*, several higher level reference manuals are provided in HTML and PDF form on the accompanying CD-ROM. Advanced users will find these references valuable in developing systems based on the RCM3100 module:

- *Dynamic C User's Manual*
- *Dynamic C Function Reference Manual*
- *Rabbit 3000 Microprocessor User's Manual*

1.4.3 Using Online Documentation

We provide the bulk of our user and reference documentation in two electronic formats, HTML and Adobe PDF. We do this for several reasons.

We believe that providing all users with our complete library of product and reference manuals is a useful convenience. However, printed manuals are expensive to print, stock and ship. Rather than include and charge for manuals that every user may not want, or provide only product-specific manuals, we choose to provide our complete documentation and reference library in electronic form with every development kit and with our Dynamic C development environment.

NOTE: The most current version of Adobe Acrobat Reader can always be downloaded from Adobe's web site at <http://www.adobe.com>. We recommend that you use version 4.0 or later.

Providing this documentation in electronic form saves an enormous amount of paper by not printing copies of manuals that users don't need.

Finding Online Documents

The online documentation is installed along with Dynamic C, and an icon for the documentation menu is placed on the workstation's desktop. Double-click this icon to reach the menu. If the icon is missing, create a new desktop icon that points to **default.htm** in the **docs** folder, found in the Dynamic C installation folder.

The latest versions of all documents are always available for free, unregistered download from our web sites as well.

Printing Electronic Manuals

We recognize that many users prefer printed manuals for some uses. Users can easily print all or parts of those manuals provided in electronic form. The following guidelines may be helpful:

- Print from the Adobe PDF versions of the files, not the HTML versions.
- If your printer supports duplex printing, print pages double-sided.
- If you do not have a suitable printer or do not want to print the manual yourself, most retail copy shops (e.g. Kinkos, AlphaGraphics, etc.) will print the manual from the PDF file and bind it for a reasonable charge—about what we would have to charge for a printed and bound manual.

2. HARDWARE SETUP

This chapter describes the RCM3100 hardware in more detail, and explains how to set up and use the accompanying Prototyping Board.

NOTE: This chapter (and this manual) assume that you have the RCM3100 Development Kit. If you purchased an RCM3100 module by itself, you will have to adapt the information in this chapter and elsewhere to your test and development setup.

2.1 Development Kit Contents

The RCM3100 Development Kit contains the following items:

- RCM3110 module, 256K flash memory, and 128K SRAM.
- RCM3000/RCM3100 Prototyping Board.
- AC adapter, 9 V DC, 1 A. (Included only with Development Kits sold for the North American market. A header plug leading to bare leads is provided to allow overseas users to connect a power supply compatible with their local mains power.)
- 10-pin header to DE9 programming cable with integrated level-matching circuitry.
- *Dynamic C* CD-ROM, with complete product documentation on disk.
- This *Getting Started* manual.
- A bag of accessory parts for use on the Prototyping Board.
- Registration card.

2.2 Prototyping Board

The Prototyping Board included in the Development Kit makes it easy to connect an RCM3100 series module to a power supply and a PC workstation for development. It also provides some basic I/O peripherals (switches and LEDs), as well as a prototyping area for more advanced hardware development.

For the most basic level of evaluation and development, the Prototyping Board can be used without modification.

As you progress to more sophisticated experimentation and hardware development, modifications and additions can be made to the board without modifying or damaging the RCM3100 module itself.

The Prototyping Board is shown below in Figure 2, with its main features identified.

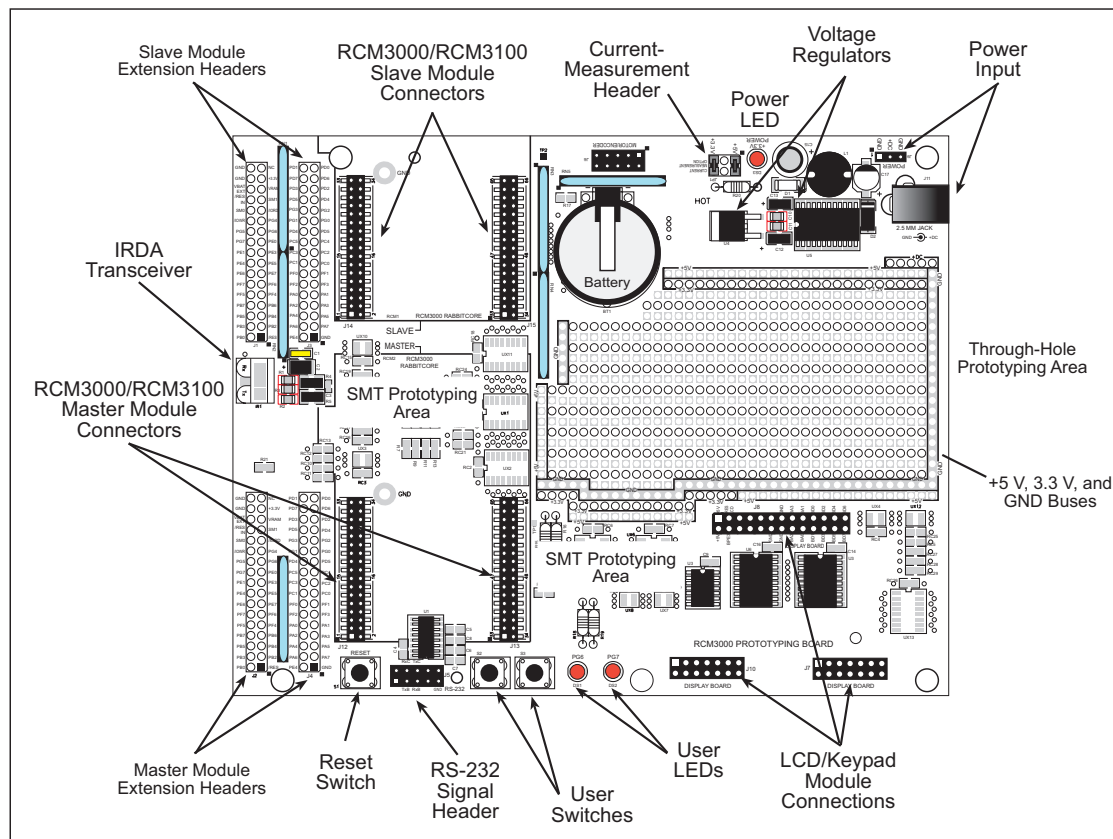


Figure 2. RCM3000/RCM3100 Prototyping Board

2.2.1 Prototyping Board Features

- **Power Connection**—A power-supply jack and a 3-pin header are provided for connection to the power supply. Note that the 3-pin header is symmetrical, with both outer pins connected to ground and the center pin connected to the raw V+ input. The cable of the AC adapter provided with the North American version of the Development Kit ends in a plug that connects to the power-supply jack. The header plug leading to bare leads provided for overseas customers can be connected to the 3-pin header in either orientation.

Users providing their own power supply should ensure that it delivers 8–24 V DC at 1 A. The voltage regulators will get warm while in use.

- **Regulated Power Supply**—The raw DC voltage provided at the POWER IN jack is routed to a 5 V switching voltage regulator, then to a separate 3.3 V linear regulator. The regulators provide stable power to the RCM3100 series module and the Prototyping Board.
- **Power LED**—The power LED lights whenever power is connected to the Prototyping Board.
- **Reset Switch**—A momentary-contact, normally open switch is connected directly to the RCM3100's /RESET_IN pin. Pressing the switch forces a hardware reset of the system.
- **I/O Switches and LEDs**—Two momentary-contact, normally open switches are connected to the PG0 and PG1 pins of the master RCM3100 module and may be read as inputs by sample applications.

Two LEDs are connected to the PG6 and PG7 pins of the master module, and may be driven as output indicators by sample applications.

- **Prototyping Area**—A generous prototyping area has been provided for the installation of through-hole components. +3.3 V, +5 V, and Ground buses run around the edge of this area. Several areas for surface-mount devices are also available. (Note that there are SMT device pads on both top and bottom of the Prototyping Board.) Each SMT pad is connected to a hole designed to accept a 30 AWG solid wire.
- **Slave Module Connectors**—A second set of connectors is pre-wired to permit installation of a second, slave RCM3100 series or RCM3100 series module. This capability is reserved for future use, although the schematics in this manual contain all of the details an experienced developer will need to implement a master-slave system.
- **Module Extension Headers**—The complete pin sets of both the **MASTER** and **SLAVE** RabbitCore modules are duplicated at these two sets of headers. Developers can solder wires directly into the appropriate holes, or, for more flexible development, 26-pin header strips can be soldered into place. See Figure 1 for the header pinouts.
- **RS-232**—Two 3-wire or one 5-wire RS-232 serial port are available on the Prototyping Board. Refer to the Prototyping Board schematic (090-0137) for additional details.

A 10-pin 0.1-inch spacing header strip is installed at J5 to permit connection of a ribbon cable leading to a standard DE-9 serial connector.

- **Current Measurement Option**—Jumpers across pins 1–2 and 5–6 on header JP1 can be removed and replaced with an ammeter across the pins to measure the current drawn from the +5 V or the +3.3 V supplies, respectively.
- **Motor Encoder**—A motor/encoder header is provided at header J6 for future use.
- **LCD/Keypad Module**—Z-World’s LCD/keypad module (Z-World part number 101-0465) may be plugged in directly to headers J7, J8, and J10.

2.3 Development Hardware Connections

There are four steps to connecting the Prototyping Board for use with Dynamic C and the sample programs:

1. Attach the RCM3100 series module to the Prototyping Board.
2. Connect the programming cable between the RCM3100 module and the workstation PC.
3. Connect the power supply to the Prototyping Board.

2.3.1 Attach Module to Prototyping Board

Turn the RCM3100 series module so that the mounting holes on the RCM3100 and on the Prototyping Board line up, as shown in Figure 3 below. Align the module headers J1 and J2 into sockets J12 and J13 on the Prototyping Board.

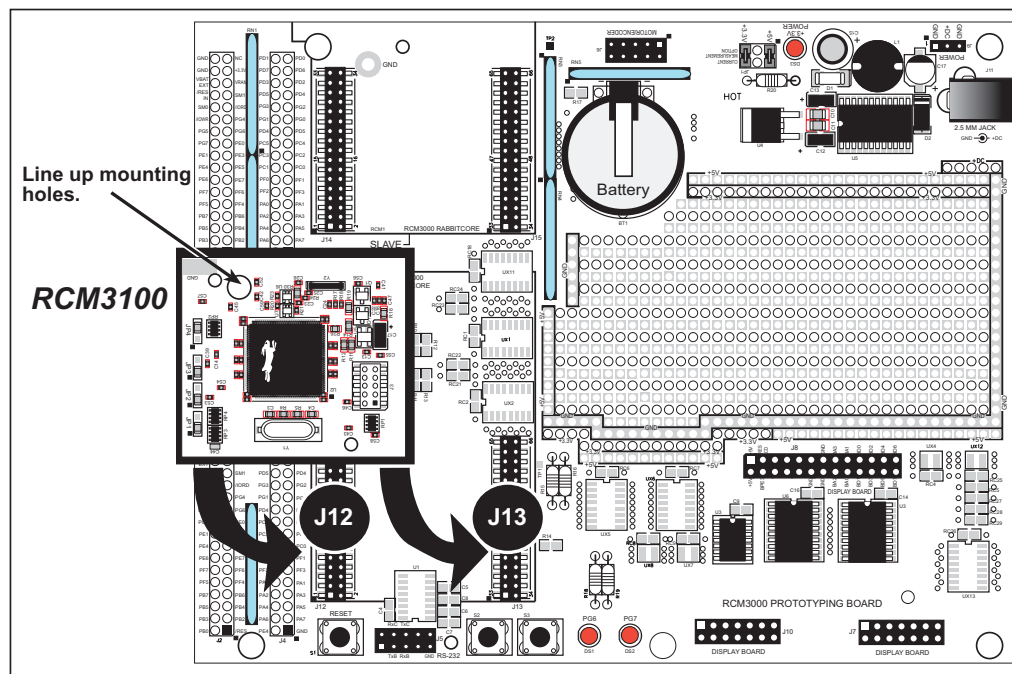


Figure 3. Installing the RCM3100 Series Module on the Prototyping Board

Although you can install a single module into either the **MASTER** or the **SLAVE** position on the Prototyping Board, all the Prototyping Board features (switches, LEDs, serial port drivers, etc.) are connected to the **MASTER** position. We recommend you install the RCM3100 module in the **MASTER** position unless you plan to use it as a slave with another RCM3000 or RCM3100 series board.

NOTE: It is important that you line up the pins on headers J1 and J2 of the RCM3100 series module exactly with the corresponding pins of headers J12 and J13 on the Prototyping Board. The header pins may become bent or damaged if the pin alignment is off-set, and the module will not work. Permanent electrical damage to the module may also result if a misaligned module is powered up.

Press the module's pins firmly into the Prototyping Board headers.

2.3.2 Connect Programming Cable

The programming cable connects the RabbitCore module to the PC running Dynamic C to download programs and to monitor the RabbitCore module for debugging.

Connect the 10-pin connector of the programming cable labeled **PROG** to header J1 on the RCM3100 series module as shown in Figure 4. Be sure to orient the marked (usually red) edge of the cable towards pin 1 of the connector. (Do not use the **DIAG** connector, which is used for a normal serial connection.)

NOTE: Be sure to use the programming cable supplied with this Development Kit—the programming cable has color shrink wrap around the RS-232 converter section located in the middle of the cable. Programming cables with clear shrink wrap from other Z-World or Rabbit Semiconductor kits were not designed to work with RCM3100 series modules.

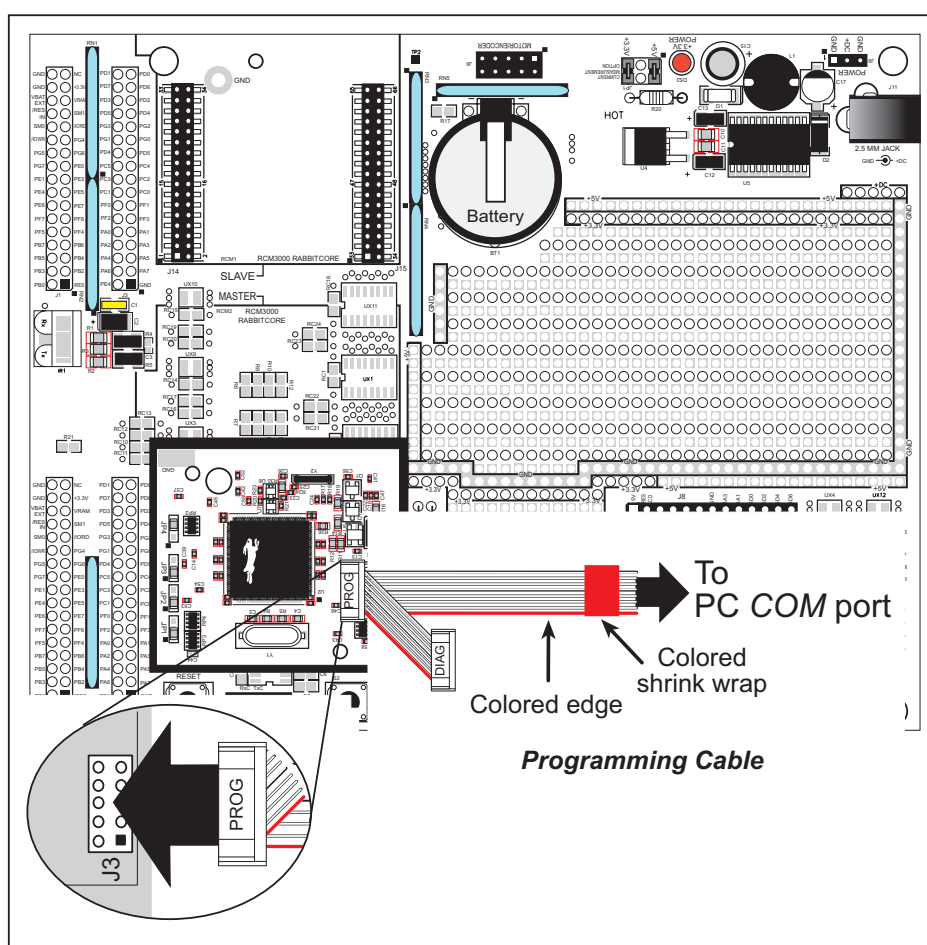


Figure 4. Connect Programming Cable to RCM3100

Connect the other end of the programming cable to a COM port on your PC.

NOTE: Some PCs now come equipped only with a USB port. It may be possible to use an RS-232/USB converter with the programming cable supplied with the RCM3100 series Development Kit. Contact Technical Support (see Section 2.5.1) for further assistance.

2.3.3 Connect Power

When all other connections have been made, you can connect power to the RCM3000/RCM3100 Prototyping Board.

Connect the wall transformer to jack J11 on the Prototyping Board as shown in Figure 5 below.

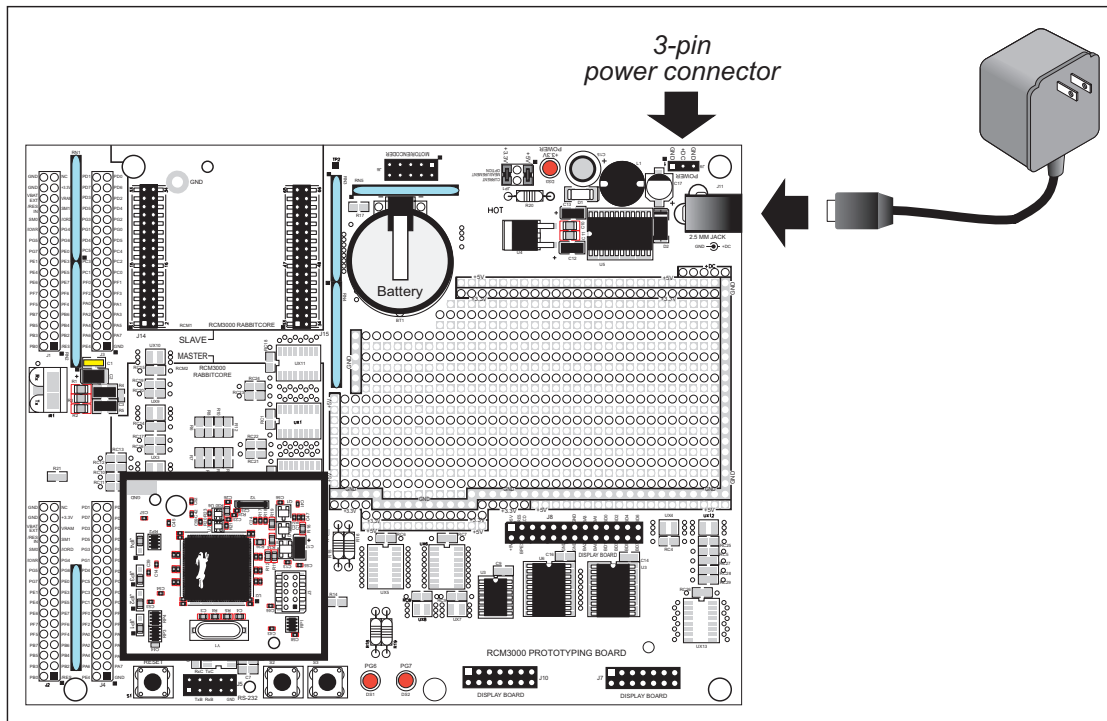


Figure 5. Power Supply Connections

Plug in the wall transformer. The power LED on the Prototyping Board should light up. The RCM3100 and the Prototyping Board are now ready to be used.

NOTE: A **RESET** button is provided on the Prototyping Board to allow hardware reset without disconnecting power.

To power down the Prototyping Board, unplug the power connector from J11. You should disconnect power before making any circuit adjustments in the prototyping area, changing any connections to the board, or removing the RCM3100 from the Prototyping Board.

2.3.3.1 Overseas Development Kits

Development kits sold outside North America include a header connector that may be connected to 3-pin header J9 on the Prototyping Board. The connector may be attached either way as long as it is not offset to one side. The red and black wires from the connector can then be connected to the positive and negative connections on your power supply. The power supply should deliver 8 V–24 V DC at 1 A.

2.4 Run a Sample Program

If you already have Dynamic C installed, you are now ready to test your programming connections by running a sample program.

Find the file **PONG.C**, which is in the Dynamic C **SAMPLES** folder. To run the program, open it with the **File** menu (if it is not still open), compile it using the **Compile** menu, and then run it by selecting **Run** in the **Run** menu. The **STDIO** window will open and will display a small square bouncing around in a box.

This program shows that the CPU is working.

2.5 Where Do I Go From Here?

We recommend that you proceed to the next chapter and install Dynamic C (if you do not already have it installed), then run the **PONG.C** sample program to verify that the RCM3100 module and the Prototyping Board are set up and functioning correctly.

If everything appears to be working, we recommend the following sequence of action:

1. Run all of the sample programs described in Section 3.4 to get a basic familiarity with Dynamic C and the RCM3100 module's capabilities.
2. For further development, refer to the *RabbitCore RCM3100 User's Manual* for details of the module's hardware and software components.

A documentation icon should have been installed on your workstation's desktop; click on it to reach the documentation menu. You can create a new desktop icon that points to **default.htm** in the **docs** folder in the Dynamic C installation folder.

3. For advanced development topics, refer to the *Dynamic C User's Manual*, also in the online documentation set.

2.5.1 Technical Support

NOTE: If you purchased your RCM3100 series module through a distributor or through a Z-World or Rabbit Semiconductor partner, contact the distributor or partner first for technical support.

If there are any problems at this point:

- Check the Z-World/Rabbit Semiconductor Technical Bulletin Board at www.zworld.com/support/.
- Use the Technical Support e-mail form at www.zworld.com/support/.

3. SOFTWARE INSTALLATION & OVERVIEW

To develop and debug programs for the RCM3100 (and for all other Z-World and Rabbit Semiconductor hardware), you must install and use Dynamic C. This chapter takes you through the installation of Dynamic C, and then provides a tour of its major features with respect to the RCM3100.

3.1 An Overview of Dynamic C

Dynamic C integrates the following development functions into one program:

- Editing
- Compiling
- Linking
- Loading
- In-Circuit Debugging

In fact, compiling, linking and loading are one function. Dynamic C does not use an In-Circuit Emulator; programs being developed are downloaded to and executed from the “target” system via an enhanced serial-port connection. Program development and debugging take place seamlessly across this connection, greatly speeding system development.

Other features of Dynamic C include:

- Dynamic C has an easy-to-use built-in text editor. Programs can be executed and debugged interactively at the source-code or machine-code level. Pull-down menus and keyboard shortcuts for most commands make Dynamic C easy to use.
- Dynamic C also supports assembly language programming. It is not necessary to leave C or the development system to write assembly language code. C and assembly language may be mixed together.
- Debugging under Dynamic C includes the ability to use `printf` commands, watch expressions, breakpoints and other advanced debugging features. Watch expressions can be used to compute C expressions involving the target’s program variables or functions. Watch expressions can be evaluated while stopped at a breakpoint, single-stepping, or while the target is running its program.

- Dynamic C provides extensions to the C language (such as shared and protected variables, costatements and cofunctions) that support real-world embedded system development. Dynamic C supports cooperative and preemptive multi-tasking.
- Dynamic C comes with many function libraries, all in source code. These libraries support real-time programming, machine level I/O, and provide standard string and math functions.
- Dynamic C compiles directly to memory. Functions and libraries are compiled and linked and downloaded on-the-fly. On a fast PC, Dynamic C can load 30,000 bytes of code in 5 seconds at a baud rate of 115,200 bps.

3.1 Hardware Requirements

To install and run Dynamic C, your system must be running one of the following operating systems:

- Windows 95
- Windows 98
- Windows NT
- Windows Me
- Windows 2000
- Windows XP

3.1.1 Hardware Requirements

The PC on which you install Dynamic C for development of RCM3100-based systems should have the following hardware:

- A Pentium or later microprocessor
- 32 MB of RAM
- At least one free COM (serial) port for communication with the target systems
- A CD-ROM drive (for software installation)

3.2 Installing Dynamic C

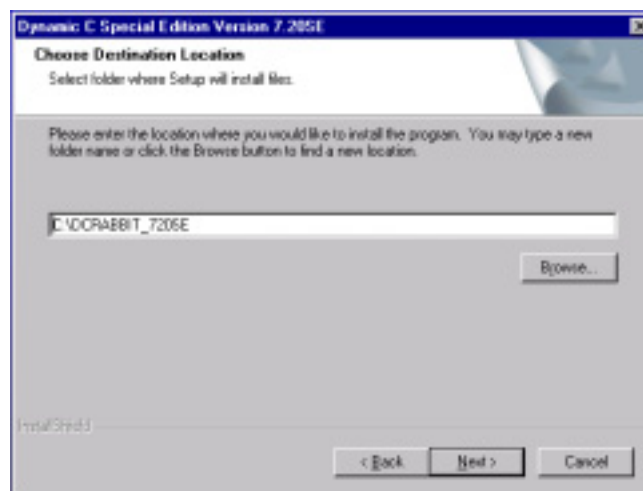
Insert the Dynamic C CD-ROM in the drive on your PC. If autorun is enabled, the CD installation will begin automatically.

If autorun is disabled or the installation otherwise does not start, use the Windows **Start | Run** menu or Windows Disk Explorer to launch **SETUP.EXE** from the root folder of the CD-ROM.

The installation program will guide you through the installation process. Most steps of the process are self-explanatory and not covered in this section. Selected steps that may be confusing to some users are outlined below. (Some of the installation utility screens may vary slightly from those shown.)

3.2.1 Program & Documentation File Location

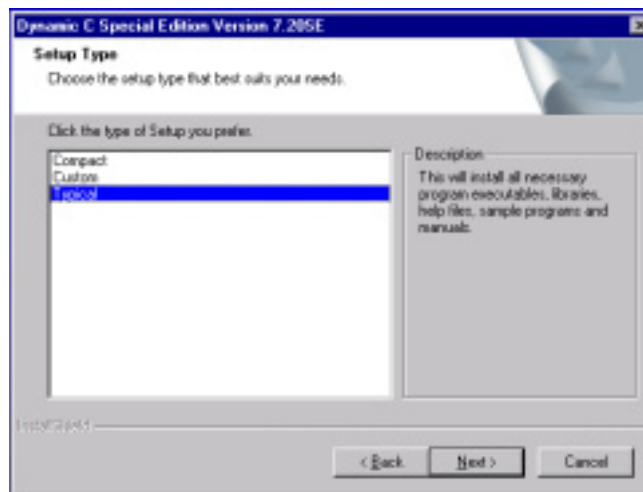
Dynamic C's application, library and documentation files can be installed in any convenient location on your workstation's hard drives.



The default location, as shown in the example above, is in a folder named for the version of Dynamic C, placed in the root folder of the C: drive. If this location is not suitable, enter a different root path before clicking **Next >**. Files are placed in the specified folder, so do not set this location to a drive's root directory.

3.2.2 Installation Type

Dynamic C has two components that can be installed together or separately. One component is Dynamic C itself, with the development environment, support files and libraries. The other component is the documentation library in HTML and PDF formats, which may be left uninstalled to save hard drive space or installed elsewhere (on a separate or network drive, for example).

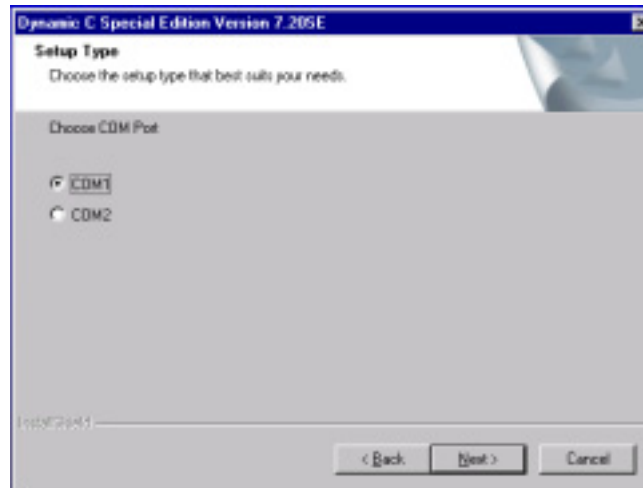


The installation type is selected in the installation menu shown above. The options are:

- **Typical Installation** — Both Dynamic C and the documentation library will be installed in the specified folder (default).
- **Compact Installation** — Only Dynamic C will be installed.
- **Custom Installation** — You will be allowed to choose which components are installed. This choice is useful to install or reinstall just the documentation.

3.2.3 Select COM Port

Dynamic C uses a COM (serial) port to communicate with the target development system. The installation allows you to choose the COM port that will be used.



The default selection, as shown in the example above, is COM1. You may select any available port for Dynamic C's use. If you are not certain which port is available, select COM1. This selection can be changed later within Dynamic C.

NOTE: The installation utility does not check the selected COM port in any way. Specifying a port in use by another device (mouse, modem, etc.) may lead to a message such as "could not open serial port" when Dynamic C is started.

3.2.4 Desktop Icons

Once your installation is complete, you will have up to three icons on your PC desktop, as shown below.



One icon is for Dynamic C, one opens the documentation menu, and the third is for the Rabbit Field Utility, a tool used to download precompiled software to a target system.

3.3 Starting Dynamic C

Once the RCM3100 is set up and connected as described in Chapter 2 and Dynamic C has been installed, start Dynamic C by double-clicking on the Dynamic C icon. Dynamic C should start, then look for the target system on the COM port you specified during installation (by default, COM1). Once detected, Dynamic C should go through a sequence of steps to cold-boot the module and compile the BIOS.

If you receive the message beginning **"BIOS successfully compiled"** you are ready to continue with the sample programs.

3.3.1 Communication Error Messages

If you receive the message **"No Rabbit Processor Detected,"** the programming cable may be connected to a different COM port, a connection may be faulty, or the target system may not be powered up. First, check to see that the power LED on the Prototyping Board is lit and that the jumper across pins 5–6 of header JP1 on the Prototyping Board is installed. If the LED is lit, check both ends of the programming cable to ensure that it is firmly plugged into the PC and the RCM3100 series module's programming port. If you are using the Prototyping Board, ensure that the module is firmly and correctly installed in its connectors.

If there are no faults with the hardware, select a different COM port within Dynamic C. From the Options menu, select Communications. The dialog shown should appear.



Select another COM port from the list, then click OK. Press **<Ctrl-Y>** to force Dynamic C to recompile the BIOS. If Dynamic C still reports it is unable to locate the target system, repeat the above steps until you locate the active COM port.

If Dynamic C appears to compile the BIOS successfully, but you then receive a communication error message, it is possible that your PC cannot handle the 115,200 bps baud rate. Try changing the baud rate to 57,600 bps as follows.

- Locate the **Serial Options** dialog in the Dynamic C **Options > Communications** menu. Change the baud rate to 57,600 bps.

3.4 Sample Programs

To help familiarize you with the RCM3100 modules, Dynamic C includes several sample programs. Loading, executing and studying these programs will give you a solid hands-on overview of the RabbitCore's capabilities, as well as a quick start with Dynamic C as an application development tool.

NOTE: The sample programs assume that you have at least an elementary grasp of ANSI C. If you do not, see the introductory pages of the *Dynamic C User's Manual* for a suggested reading list.

Of the many sample programs included with Dynamic C, several are specific to the RCM3100. These programs will be found in the **samples/RCM3100** folder.

We suggest that you examine the following five of these sample programs in order to get a tour of some of the capabilities of the RCM3100 modules.

- **CONTROLLED.c**—This sample program demonstrates the controlling port outputs from **STDIO** by toggling LEDs on the Prototyping Board.
- **FLASHLED1.c**—This assembly program uses costatements to flash LEDs DS1 and DS2 on the Prototyping Board at different intervals.
- **FLASHLED2.c**—This program uses cofunction and costatements to flash LEDs DS1 and DS2 on the Prototyping Board at different intervals.
- **IR_DEMO.c**—This program demonstrates sending packets (Modbus ASCII) back and forth over an IR link. This demo requires two RCM3000/RCM3100 Prototyping Boards with an RCM3100 module on each Prototyping Board. Set up the Prototyping Boards so that their IR transceivers are facing each other. Load the program into one RCM3100, then operate this RCM3100 in Run mode without a programming cable attached. Program the other RCM3100 and then observe the results in the **STDIO** window on your PC with the **PROG** connector on the programming cable still connected.
- **TOGGLESWITCH.c**—This program uses costatements to detect switches using the press-and-release method of debouncing. Corresponding LEDs DS1 and DS2 on the Prototyping Board turn on or off.

The **samples/RCM3100/serial** folder provides samples to illustrate serial communication with the RCM3100.

Each of these programs is fully commented within the source code. Refer to these comments for the details of how each program works.

To run a program, open it with the **File** menu (if the sample program is not already open), compile it using the **Compile** menu, and then run it by selecting **Run** in the **Run** menu.

Once you have loaded and executed these programs and have an understanding of how Dynamic C and the RCM3100 modules interact, you can move on and try the other sample programs, or begin building your own.



NOTICE TO USERS

ZWORLD PRODUCTS ARE NOT AUTHORIZED FOR USE AS CRITICAL COMPONENTS IN LIFE-SUPPORT DEVICES OR SYSTEMS UNLESS A SPECIFIC WRITTEN AGREEMENT REGARDING SUCH INTENDED USE IS ENTERED INTO BETWEEN THE CUSTOMER AND Z-WORLD PRIOR TO USE. Life-support devices or systems are devices or systems intended for surgical implantation into the body or to sustain life, and whose failure to perform, when properly used in accordance with instructions for use provided in the labeling and user's manual, can be reasonably expected to result in significant injury.

No complex software or hardware system is perfect. Bugs are always present in a system of any size. In order to prevent danger to life or property, it is the responsibility of the system designer to incorporate redundant protective mechanisms appropriate to the risk involved.

All Z-World products are 100 percent functionally tested. Additional testing may include visual quality control inspections or mechanical defects analyzer inspections. Specifications are based on characterization of tested sample units rather than testing over temperature and voltage of each unit. Z-World products may qualify components to operate within a range of parameters that is different from the manufacturer's recommended range. This strategy is believed to be more economical and effective. Additional testing or burn-in of an individual unit is available by special arrangement.

INDEX

A

additional information
 online documentation 5
 references 4

C

C language 15, 16

D

Development Kit 7
Dynamic C 4, 15, 16
 assembly language 15
 debugger 15
 debugging 15
 desktop icons 19
 editor 15
 features 15
 handling communication error
 messages 20
 hardware requirements 16
 installing 17, 18, 19
 sample programs 21
 starting 20
 watch expressions 15

F

features
 Prototyping Board 8, 9
 RCM3100 2

H

hardware connections 11
 install RCM3100 on Prototyp-
 ing Board 11
 power supply 13
 programming cable 12
hardware reset 13

M

models
 factory versions 2

P

pinout
 RCM3100 3
power supply
 connections 13
programming cable
 RCM3100 connections 12
Prototyping Board 8
 expansion area 9
 features 8, 9
 mounting RCM3100 11

R

RCM3100
 mounting on Prototyping
 Board 11
reset 13

S

sample programs 21
 getting to know the RCM3100
 CONTROLLED.C 21
 FLASHLED1.C 21
 FLASHLED2.C 21
 IR_DEMO.C 21
 serial communication 21
 TOGGLESWITCH.C 21
 PONG.C 14
software
 sample programs 21
specifications
 physical and electrical 3

T

technical support 14



SCHEMATICS

090-0144 RCM3100 Schematic

www.rabbitsemiconductor.com/documentation/schemat/090-0144.pdf

090-0137 RCM3000/RCM3100 Prototyping Board Schematic

www.rabbitsemiconductor.com/documentation/schemat/090-0137.pdf

090-0156 LCD/Keypad Module Schematic

www.rabbitsemiconductor.com/documentation/schemat/090-0156.pdf

090-0128 Programming Cable Schematic

www.rabbitsemiconductor.com/documentation/schemat/090-0128.pdf

The schematics included with the printed manual were the latest revisions available at the time the manual was last revised. The online versions of the manual contain links to the latest revised schematic on the Web site. You may also use the URL information provided above to access the latest schematics directly.

