



GFI Product Manual

GFI BackUpTM

Getting Started Guide



The information and content in this document is provided for informational purposes only and is provided "as is" with no warranty of any kind, either express or implied, including but not limited to the implied warranties of merchantability, fitness for a particular purpose, and non-infringement. GFI Software is not liable for any damages, including any consequential damages, of any kind that may result from the use of this document. The information is obtained from publicly available sources. Though reasonable effort has been made to ensure the accuracy of the data provided, GFI makes no claim, promise or guarantee about the completeness, accuracy, recency or adequacy of information and is not responsible for misprints, out-of-date information, or errors. GFI makes no warranty, express or implied, and assumes no legal liability or responsibility for the accuracy or completeness of any information contained in this document.

If you believe there are any factual errors in this document, please contact us and we will review your concerns as soon as practical.

All product and company names herein may be trademarks of their respective owners.

GFI BackUp is copyright of GFI SOFTWARE Ltd. - 1999-2011 GFI Software Ltd. All rights reserved.

Document Version: 03-02-00

Last updated (month/day/year): 05-10-11

Contents

1 Introduction	6
1.1 Using this manual	6
1.2 How does GFI BackUp Work	7
1.3 GFI BackUp Licensing	8
2 System requirements	10
2.1 GFI BackUp Administration Console	10
2.2 GFI BackUp Agent	11
2.3 GFI BackUp Bootable Restore Disk	11
3 Installing GFI BackUp	12
3.1 Post install configurations	16
3.2 Testing GFI BackUp	18
3.3 Introduction	18
3.4 Adding a test backup task	19
3.5 Restoring test backup task	27
3.6 Validating the restore process	30
4 Troubleshooting and support	31
4.1 Introduction	31
4.2 Common Issues	31
4.3 Knowledge Base	31
4.4 Web Forum	31
4.5 Request technical support	31
4.6 Documentation	32
5 Glossary	33
6 Appendix - Credentials for remote operations	39
6.1 Introduction	39
6.2 One account for all	39
6.3 Credentials supplied by users	39
7 Index	42

List of Figures

Screenshot 1: Installation: Use default or custom connection settings	12
Screenshot 2: Installation: Specify custom connection settings	13
Screenshot 3: Installation: Specify credentials used for local backup	14
Screenshot 4: Installation: Installation summary	15
Screenshot 5: Installation: Home page	15
Screenshot 6: GFI BackUp: Select Data Access Method	17
Screenshot 7: Settings: Administration Console login account	18
Screenshot 8: Test backup: Select Backup files, folders and settings option	19
Screenshot 9: Test backup: Select the destination media used for backup	20
Screenshot 10: Test backup: General tab	21
Screenshot 11: Test backup: Computer tab	22
Screenshot 12: Test backup: Source tab	23
Screenshot 13: Test backup: Destination tab	24
Screenshot 14: Test backup: Options tab	25
Screenshot 15: Test backup: Scheduler tab	26
Screenshot 16: Test backup: Summary of backup settings dialog	27
Screenshot 17: Test restore: Selecting Full-Backup restore	28
Screenshot 18: Test restore: Select computer and backup to restore	29
Screenshot 19: Test restore: Summary of backup restore dialog	30
Screenshot 20: GFI BackUp Agent: Credentials screen	40

List of Tables

Table 1: Terms and conventions used in this manual..... 6

Table 2: GFI BackUp services..... 8

Table 3: Hardware requirements..... 10

Table 4: Software requirements..... 10

Table 5: Hardware requirements..... 11

Table 6: Software requirements..... 11

Table 7: Hardware requirements..... 11

Table 8: Software requirements..... 11

1 Introduction

GFI BackUp is a simple yet powerful backup and restore utility that enables you to back up and restore data stored on local and networked computers. GFI BackUp offers the following main features:



Feature	Description
Backup to a wide variety of media	Including local and external storage devices, removable media such as CD/DVD/Blu-ray discs and Tape drives, and other locations such as NAS or FTP.
Backup Virtualization environments	Backup and restore virtual machines and test environments. GFI BackUp supports VMware Workstation, VMware Server and Microsoft Hyper-V
Complete set of backup types	Full-backup, incremental and differential backups as well as stack backups enable the setting up of different backups that cater for all needs.
Disk Image Backup and Restore	Create snapshots of your entire system and recover your operating system, installed applications and data. This disaster recovery feature enables you to recover from hardware failure, data corruption and theft.
Ease of use	A user-centric design that emphasizes ease of use enables users to configure and use GFI BackUp in the easiest way possible.
Extensive scheduling controls	Configure backups to run at specific intervals such as daily, weekly and every x days, hours, minutes.
Full visibility on systems operation	The availability of reports on all system functions, an activity dashboard, as well as screens showing backup, restore, and agent functions provide all the necessary information related to all your backup activity.
Granular control on user actions	User permission settings dictate the level of access to backup and restore features that are available to the users on their computers. These are fully customizable to cater for all requirements, from the most basic user to the most advanced.
Microsoft SQL server backup	Backup and restore your Microsoft SQL server data and database schema quickly and easily with low business downtime.
Network wide backup and restore capabilities	Backup and restore data on servers, computers, and laptops all over your network.
Secure backup	Archive data to ZIP password (less secure but faster) or 256-bit AES encryption (more secure but slower) encrypted archives, ensuring that data cannot be maliciously compromised.

1.1 Using this manual

This getting started guide is a comprehensive guide aimed at assisting you in installing and configuring GFI BackUp for first time use.

1.1.1 Terms and conventions used in this manual

Table 1: Terms and conventions used in this manual

Term	Description
	Additional information and references essential for the operation of GFI BackUp.
	Important notifications and cautions regarding potential issues that are commonly encountered.
>	Step by step navigational instructions to access a specific function.
Bold text	Items to select such as nodes, menu options or command buttons.
<i>Italics text</i>	Parameters and values that you must replace with the applicable value, such as custom paths and filenames.
Code	Indicates text values to key in, such as commands and addresses.

1.2 How does GFI BackUp Work

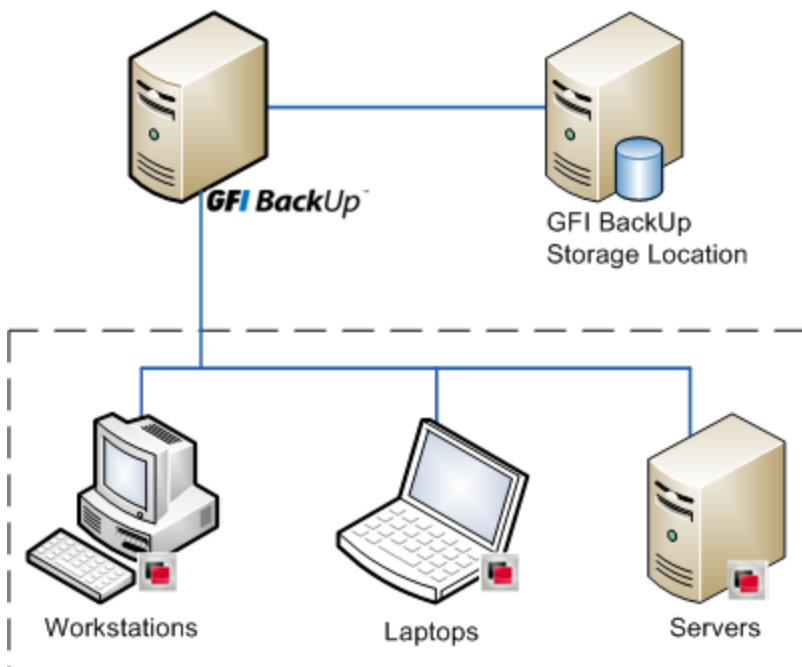


Figure 1: How does GFI BackUp work

GFI BackUp is composed of three interdependent components:

- » GFI BackUp Administration Console
- » GFI BackUp Agents
- » GFI BackUp Services.

1.2.1 GFI BackUp Administration Console

The GFI BackUp Administration Console is installed at a central location with network access to all computers that require a backup solution. Deploy all the required agents on your networked computers and use the GFI BackUp Administration Console to:

- » Configure new backup tasks across multiple computers on your network
- » Manage GFI BackUp Agents deployed on your network
- » Restore data on networked computers from a central location
- » Centralize the storage of backups to a central network location or media
- » Monitor the operation of tasks (backups and restores) across the whole network
- » Generate reports on the operation of backups and restores.

1.2.2 GFI BackUp Agents

The GFI BackUp Agents are the components that manage backup and restore operations on client machines, including the computer where GFI BackUp Administration Console is installed. Through user permissions set by the systems administrator, users can also configure their own backups, restores and sync operations on their workstations and computers, over and above those setup by the administrator via the GFI BackUp Administration Console.



Note

This user manual provides detailed information related to the deployment and configuration of GFI BackUp Agent. For detailed instructions on how to use the features included within GFI BackUp Agent, refer to the User Manual available from:

http://go.gfi.com/?pageid=BKUP_manuals

1.2.3 GFI BackUp Services

Table 2: GFI BackUp services

Service Name	Description	Location Name	User Credentials
GFI Backup 2010 Scheduler Service	The central component of the GFI Backup 2010 Agent. Executes the following tasks: Receives backup/restore instructions from the GFI Backup Administration Console Sends backup/restore status reports to GFI Backup Administration Console Manages backup/restore task scheduling Manages the execution of backup/restore tasks in the designated order Notifies GFI Backup Tray Agent about the GFI Backup Administration Console connection and task execution status.	<drive>:\Program Files\GFI\GFI Backup 2010\GFIBSched.exe	Local System
GFI Backup Attendant Service	Verifies the status of installed agents.	<drive>:\Program Files\GFI\GFI Backup 2010\GFIBInst.exe	Local System
GFI Backup Administration Console	The Apache HTTP service that enables the GFI Backup Administration Console.	<drive>:\Program Files\GFI\GFI Backup 2010 Administration Console\apache\bin\httpd.exe	User account specified during installation for the GFI Backup Admin Console.
GFI Backup Disk Image	Sends and receives low-level messages while performing a Disk Image Backup.	<drive>:\Program Files\GFI\GFI Backup\DiskImage\Win32\oodiag.exe	Local System

1.3 GFI BackUp Licensing

GFI BackUp licensing is based on the role that the deployed GFI Backup Agents will play in your backup strategy. GFI BackUp Agents are licensed as follows:

- » **Servers:** GFI BackUp Agents assigned a server license enable you to perform server level operations such as backing up Microsoft SQL Servers and files/folders on systems running server Operating Systems such as Microsoft Windows Server 2003.
- » **Workstations:** GFI BackUp Agents assigned a workstation license can back up data from systems that are not running a server type of OS for example, Microsoft Windows 7. Agents running under a workstation license cannot, for example, be used to backup Microsoft SQL Server data.

Notwithstanding the license assigned to the installed agents, the GFI BackUp Agent software is the same for all GFI BackUp Agents and the license type assigned to an agent can be changed via the Licensing tab in the GFI BackUp Administration Console.

1.3.1 Further information on GFI BackUp licensing

For more information on GFI BackUp licensing, refer to: http://go.gfi.com/?pageid=BKUP_compEdition.

2 System requirements

2.1 GFI BackUp Administration Console

Table 3: Hardware requirements

Type	Requirement
Processor	Intel Pentium 4 onwards.
RAM	1GB
Hard disk	500MB for installation, temporary files and logs.

Table 4: Software requirements

Type	Requirements
Supported operating systems (x86 or x64)	<ul style="list-style-type: none">» Microsoft Windows Server 2008» Microsoft Windows Server 2003 Standard/Enterprise» Microsoft Windows 7» Microsoft Windows Vista» Microsoft Windows XP
Supported web browsers	<ul style="list-style-type: none">» Microsoft Internet Explorer 8 or later» Mozilla Firefox 3 or later
Other requirements	<ul style="list-style-type: none">» Adobe Flash Player - required by GFI BackUp to display Activity and Disk Space charts in the Home Page of GFI BackUp Administration Console. Freely downloadable from: http://www.adobe.com/products/flashplayer/» Static IP address - install GFI BackUp Administration Console on a computer with a static IP address. Using DHCP may lead to connectivity loss between the GFI BackUp Administration Console and the GFI BackUp Agent.» Open TCP ports 5580 & 5543 - required for GFI BackUp Administration Console access and for communication between GFI BackUp Agent and GFI BackUp Administration Console.
Optional requirement	<ul style="list-style-type: none">» Microsoft Volume Snapshot Service (Microsoft VSS) - required to back up files currently in use.



Note

Ensure that your firewall settings enable communications between all the computers where GFI BackUp Agent are installed and the server where GFI BackUp Administration Console resides. For further information on how to configure the Windows Firewall refer to: <http://kbase.gfi.com/showarticle.asp?id=KBID003879>



Note

In case where GFI BackUp Administration Console is installed on a computer with multiple IP addresses (for example, Internal and External networks), it is recommended that during the installation you specify an IP address reachable by all subnets where the GFI Backup Agents will be installed.

2.2 GFI BackUp Agent

Table 5: Hardware requirements

Type	Requirement
Processor	Compatible with Microsoft operating systems
RAM	1GB
Hard disk	300MB

Table 6: Software requirements

Type	Requirements
Supported operating systems (x86 or x64)	<ul style="list-style-type: none">» Microsoft Windows Server 2008» Microsoft Windows Server 2003 Standard/Enterprise» Microsoft Windows 7» Microsoft Windows Vista» Microsoft Windows XP

2.3 GFI BackUp Bootable Restore Disk

Table 7: Hardware requirements

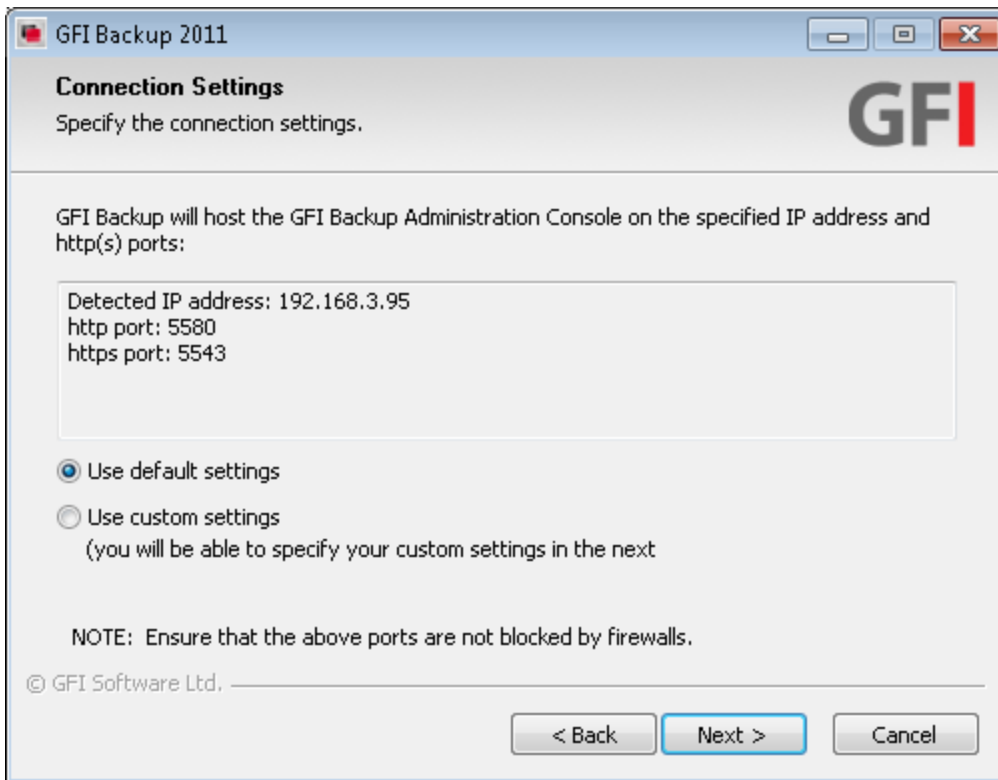
Type	Requirement
Processor	All supported by Microsoft operating systems
RAM	1GB
Hard disk	30MB

Table 8: Software requirements

Type	Requirements
Supported operating systems (x86 or x64)	<ul style="list-style-type: none">» Microsoft Windows Server 2008» Microsoft Windows Server 2003 Standard/Enterprise» Microsoft Windows 7» Microsoft Windows Vista» Microsoft Windows XP

3 Installing GFI BackUp

1. Double click the GFI BackUp Administration Console application setup.
2. Click **Next** at the Welcome screen to continue setup.
3. Choose the license type and click **Next**. To compare the available GFI BackUp editions, refer to <http://www.gfi.com/backup-software-for-business/backup-editions.htm>.
4. Carefully read the End-User License Agreement. If you agree to the terms laid out in the agreement, select **I accept the terms of the license agreement** and click **Next**.



Screenshot 1: Installation: Use default or custom connection settings

5. Select **Use default settings** and click **Next** to install GFI BackUp Administration Console using the discovered IP address, HTTP and HTTPS ports. To change the discovered settings, click **Use custom settings** and click **Next**.



Note

If the installation wizard detects multiple IP addresses the wizard enables you to select the IP address from a list of detected IPs.



Screenshot 2: Installation: Specify custom connection settings

6.<Optional> If **Use custom settings** is selected in step 5, or if multiple IP addresses are discovered, select and key in the IP address, HTTP and HTTPS ports to use and click **Next** to continue setup.



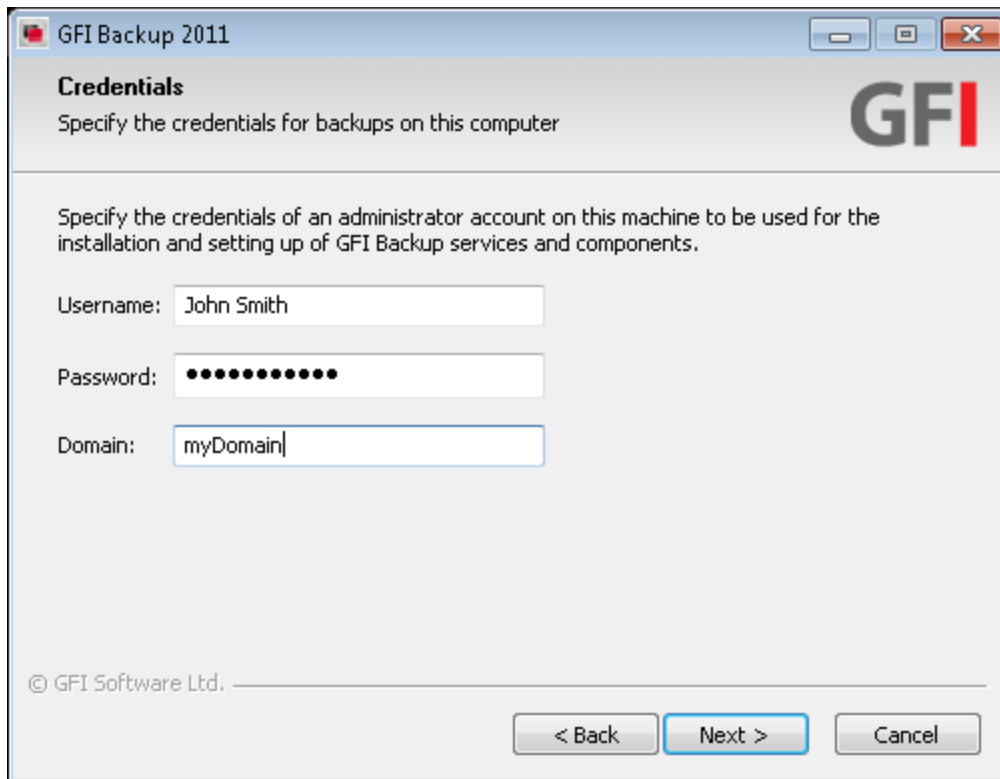
Note

For computers with multiple IP addresses (for example, Internal and External networks), you must specify an IP address reachable by all subnets where the GFI Backup Agents will be installed.



Note

If **Use default settings** was selected, this screen is not displayed. In this case, proceed to the next step.



Screenshot 3: Installation: Specify credentials used for local backup

7. Key in the local administrator account details required by the GFI BackUp Agent to execute backup and restore tasks and for the configuration of other administrative settings. Click **Next** to continue setup.

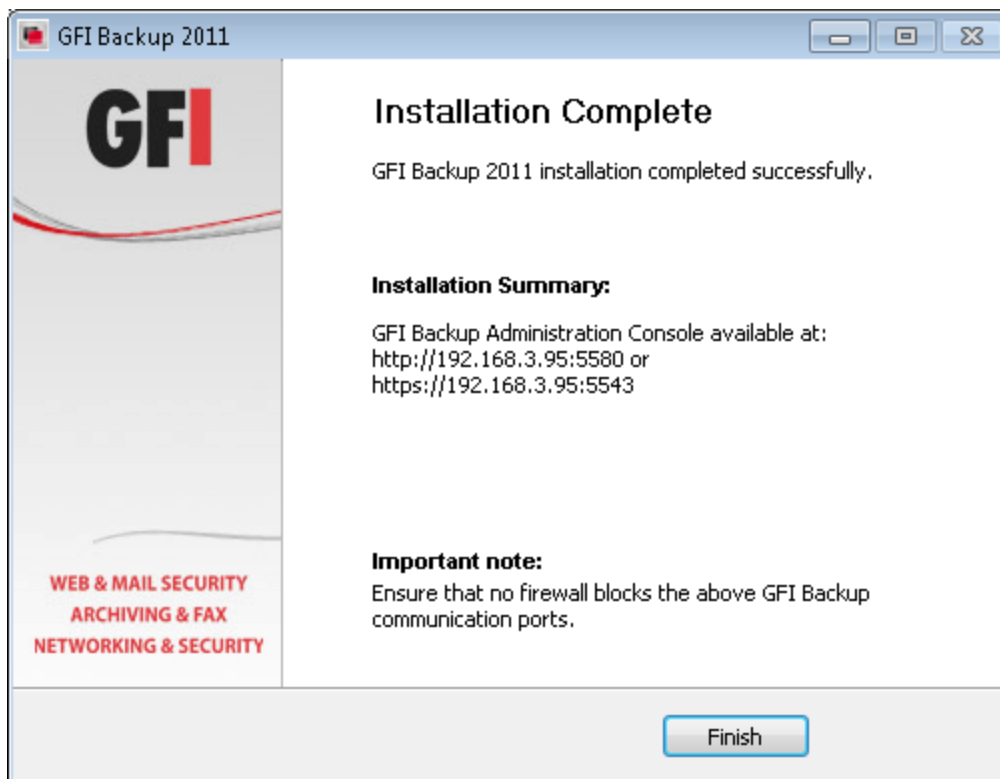


Note

Leave the **Domain** text box blank, if you do not know the domain name or your machine is not a domain member.

8. Key in or browse to select the folder where GFI BackUp Administration Console will be installed and click **Next**.

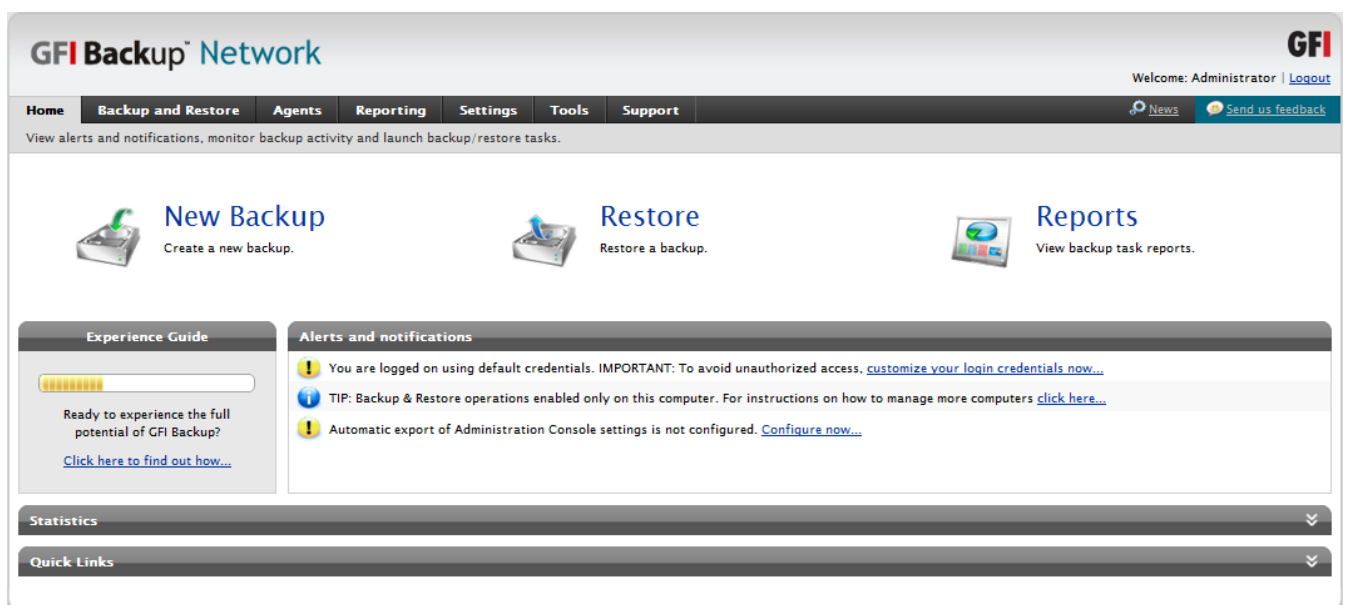
9. Specify the Start menu folder name for GFI BackUp and click **Install** to start installation.



Screenshot 4: Installation: Installation summary

10. On installation completion, review the **Installation Summary** page and click **Finish** to finalize installation.

On completion, GFI BackUp is automatically launched. This enables you to configure and start using GFI BackUp.



Screenshot 5: Installation: Home page



Note

To manually load the GFI BackUp Administration Console web interface, click **Start > Programs > GFI Backup 2011 > GFI Backup 2011 Administration Console**.

3.1 Post install configurations

3.1.1 Introduction

This section is only applicable when installing GFI BackUp in Network mode.

3.1.2 Step 1: Select the Data Access Method

The **Data Access Method** is the method used by GFI BackUp to retrieve information located on the source computers. When switching to a **Network** license, the **Startup Wizard** enables you to select the preferred **Data Access Method**.

Select data access method

Backup/restore operations must run under a Microsoft Windows user account that has access privileges over the data to be backed up from networked computers.

Select the method that GFI Backup will use to run backup and restore operations. This setting can be modified later on via GFI Backup Administration Console ► Settings.

☒ **One account for all** (Recommended for Active Directory environments)



Use the following Microsoft Windows account. This account has access privileges over all data to back up from networked computers and will be used by default to access the data networked computers.

User name:
E.g. "DOMAIN\User"

Password:

☐ **Custom** (Recommended for Workgroups)



Use this option if a common user account cannot be relied upon to access data on networked computers; such as operating in a work group environment. The GFI Backup Agent will prompt each user to specify their credentials and safely store them to access and process the data associated with these accounts.

[Help me choose...](#)

Finish

Screenshot 6: GFI BackUp: Select Data Access Method

1. Select one of the following options:

- » **One account for all:** Choose this option if your network setup allows for a single user account that has read access privileges on all the data to back up from networked computers and write rights over the locations where to restore data (for example, a domain or a local administrator account) Also, key in the user account's credentials. This option is recommended for Microsoft Active Directory environments. Key in the credentials in 'domain\user' or 'user@domain.com' format. In case of workgroups, key in the credentials in 'computer name\user' format.
- » **Custom:** Choose this option if there is no common user account in your network setup that can be relied upon to access data on networked computers, for example, in Microsoft Windows Workgroup computers. Choosing this option will prompt every GFI BackUp Agent to ask each

network user where it is deployed to input his/her login credentials. This data will be encrypted, stored and used to access the data to back up on networked computers.

This option is recommended for Microsoft Windows Workgroup environments.

2. Click **Finish** to finalize Startup Wizard setup.

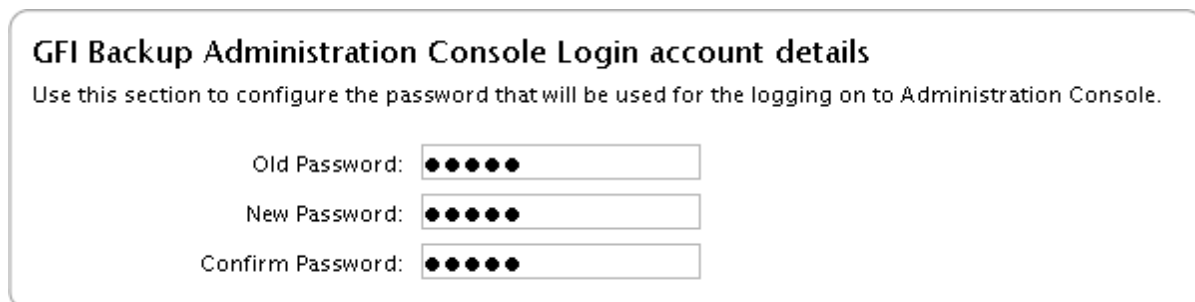
3.1.3 Configure the Administration Console login details

The GFI BackUp Administration Console login account is an in-built account used to login GFI BackUp. By default, this account is pre-set to use admin as both username and password.

It is highly recommended to change the default settings as follows:

1. Launch GFI BackUp Administration Console and login using the default account.

2. Select **Settings** tab > **General Settings**.



Screenshot 7: Settings: Administration Console login account

3. In **GFI BackUp Administration Console Login account details**, key in the old password, new password and the new password confirmation.

4. Click **Save**.

3.1.4 <Optional> Step 3: Configuring Proxy Settings

If your network settings require that you configure GFI BackUp to use a proxy:

1. Locate the `config.ini` file in the <GFI Backup installation path>\GFI Backup 2010 Administration Console\htdocs\config\ folder.

2. Open `config.ini` with a text editor and locate the `[proxy]` identifier.

3. Provide the following information:

Option	Description	Example
proxy_address=	Defines proxy IP address where data should be relayed to.	proxy_address = 192.168.3.122
proxy_port =	Defines proxy IP port where data should be relayed to.	proxy_port = 225
proxy_user-name=	Defines the username using which you can access the proxy service	proxy_username=proxyuser
proxy_password=	Defines the password using which you can access the proxy service	proxy_user-name=proxyuserpassword

4. Save the `config.ini` file and restart the GFI BackUp Administration Console.

3.2 Testing GFI BackUp

3.3 Introduction

Once GFI BackUp is installed and the post configuration settings are configured, test your GFI BackUp installation to ensure that GFI BackUp is working correctly. Follow the steps in the example in this

section to configure a test backup. This test will enable you to configure a basic backup task with minimal configuration to execute the backup task and to restore data back to its original location.

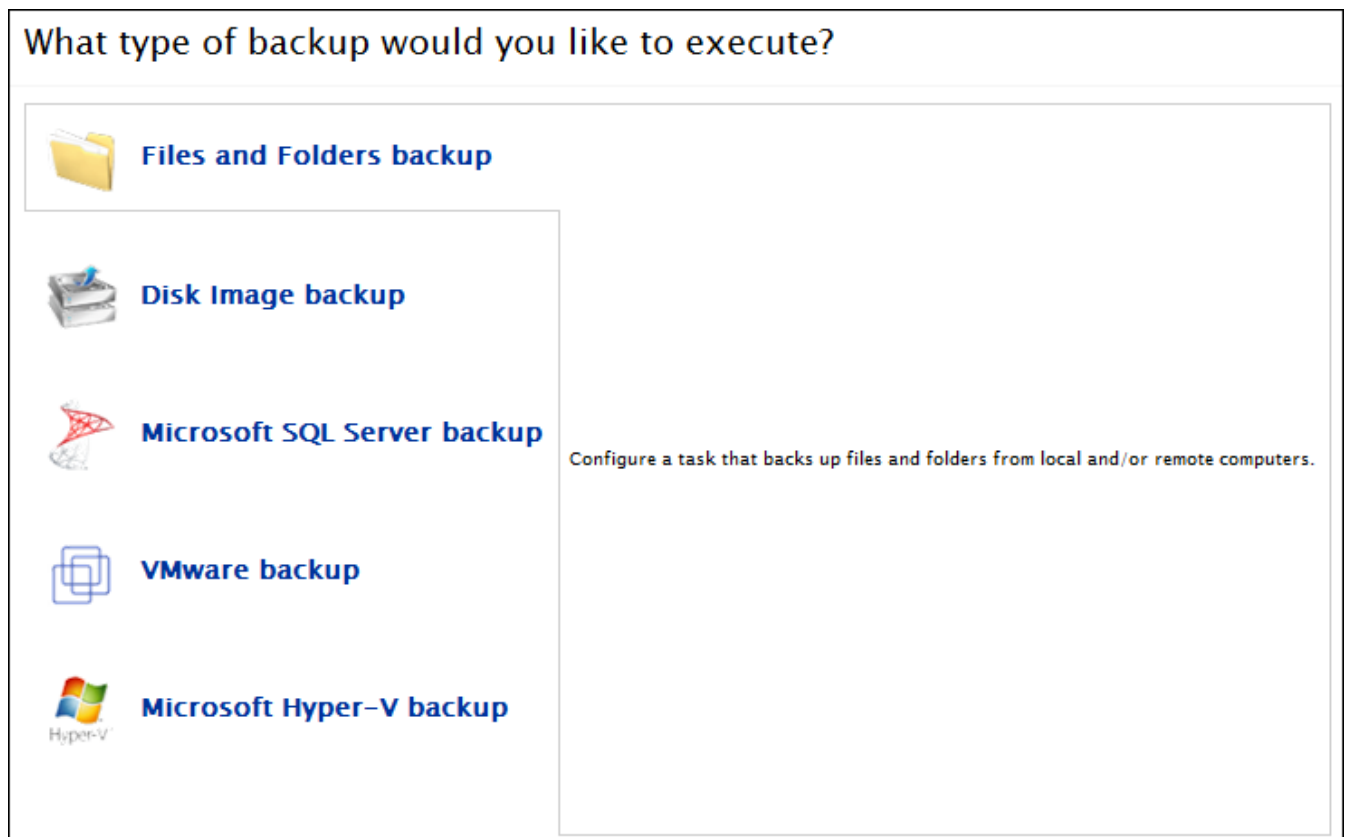


Note

The information contained within this test is aimed ONLY at providing you with basic backup and restore test setup. For detailed information on how to configure backups and restores and on the options provided by GFI BackUp, refer to the GFI BackUp Administration Console Help.

3.4 Adding a test backup task

1. From the GFI BackUp Administration Console main screen, select **New Backup** option.



Screenshot 8: Test backup: Select Backup files, folders and settings option

2. Select **Files and Folders backup**.

Welcome to the New Backup Wizard

This wizard will guide you through the stages required to successfully configure and run backups.
You are about to start configuring a new backup task.

Select backup media:



[Backup to Local/External HDD or LAN/FTP location](#)

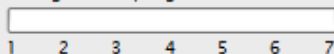
Click this option to use a physical location on disk or network as the medium for this backup operation.



[Backup to CD/DVD or Tape](#)

Click this option to use a CD, DVD or a Tape Drive as the medium for this backup operation.

Configuration progress



Cancel

Screenshot 9: Test backup: Select the destination media used for backup

3. In the welcome screen, select **Backup to Local/External HDD or LAN/FTP location**.

The screenshot shows the 'New Backup Wizard' window for GFI Backup Network. The 'General' tab is selected, and the progress bar indicates Step 1 of 7. The 'Backup Task Name' field contains 'Test backup', and the 'Backup Description' field contains 'Create to test GFI Backup installation.' The 'Next' button is highlighted.

GFI Backup Network **New Backup Wizard**

General | Computer | Source | Destination | Options | Scheduler

STEP 1 of 7: Specify the general details for the new backup.

Specify backup task details.

Backup Task Name:
Backup name that will appear in the task list.

Backup Description:
(Optional)
The description for this backup task

Configuration progress: 1 2 3 4 5 6 7

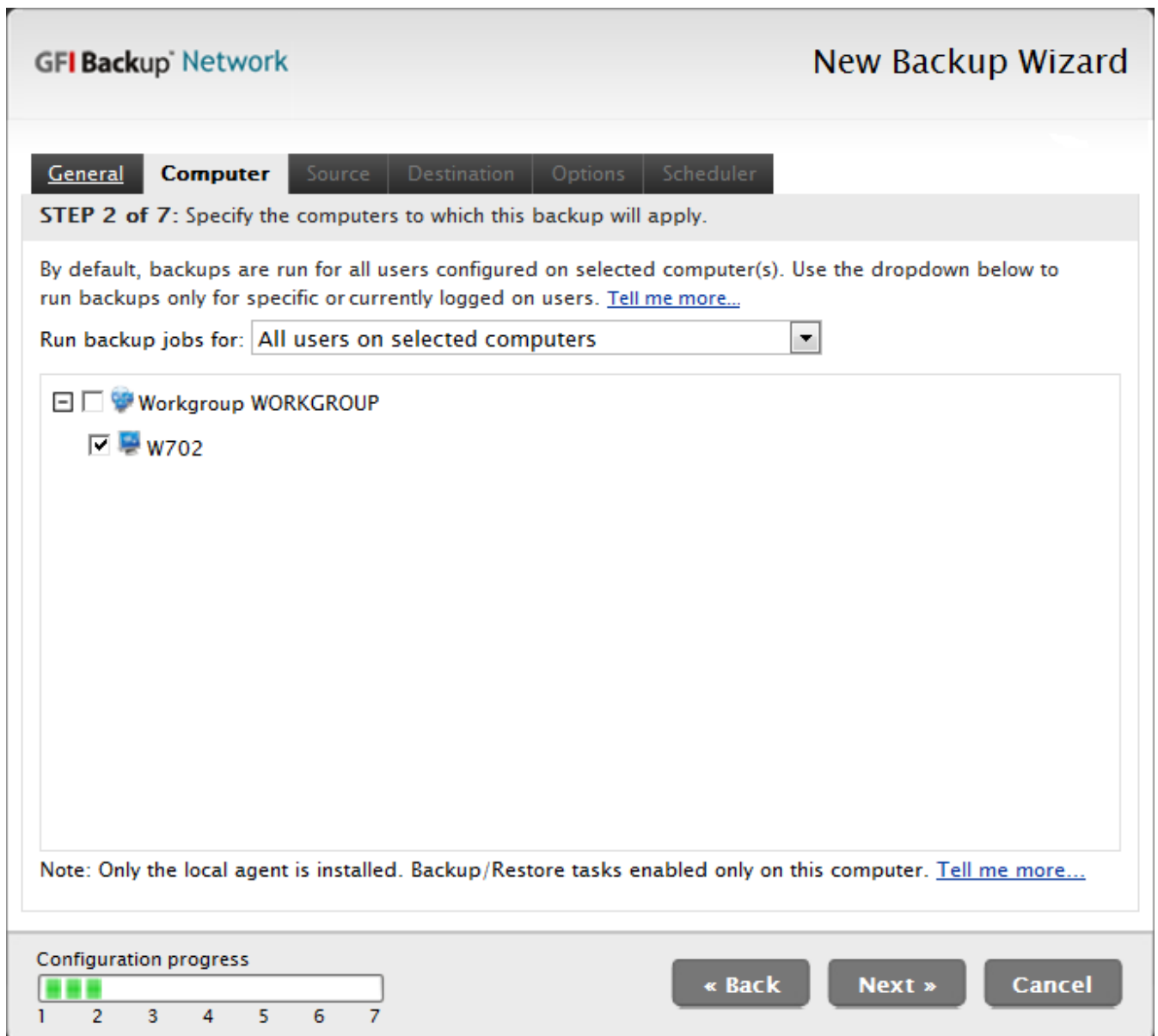
Next » **Cancel**

Screenshot 10: Test backup: General tab

4. In the **General** tab, key in the new backup task details:

- » **Backup Task Name:** Define the backup task name that will be associated with the new task being created.
- » **Backup Description:** Key in an optional description of the new backup task being created.

Click **Next**.



Screenshot 11: Test backup: Computer tab

5. In the **Computer** tab, choose **All users on selected computers** option from the **Run backups jobs for:** drop-down. Choose the computers for which the new backup operation will be applicable and click **Next**.

GFI Backup Network

New Backup Wizard

GeneralComputerSourceDestinationOptionsScheduler

STEP 3 of 7: Specify the source files and items to be stored during this backup.

Files/FoldersDrives

Backup source selector: Specific Paths

Apply to: ALL COMPUTERS

Path to add to backup: Enter path...

Add...Browse

TIP: [System variables are supported.](#)

☐ Path

On

☐ C:\Source

ALL COMPUTERS

File Filters

Remove

Configuration progress

1234567

« Back

Next »

Cancel

Screenshot 12: Test backup: Source tab

6. In the **Source** tab, click **Files/Folders > Browse**. Select the source folder to backup and click **Next**.

GFI Backup[®] Network
New Backup Wizard

General
Computer
Source
Destination
Options
Scheduler

STEP 4 of 7: Specify the destination where this backup will be saved.

Select backup target destination.
Destination Folder/External HDD on computer running agent

An existing folder located on each individual computer selected in the Computer tab of this New backup wizard. Data collected from the computer where agent is installed will be saved on the same computer from where data to backup is located.

Local Folder/External HDD

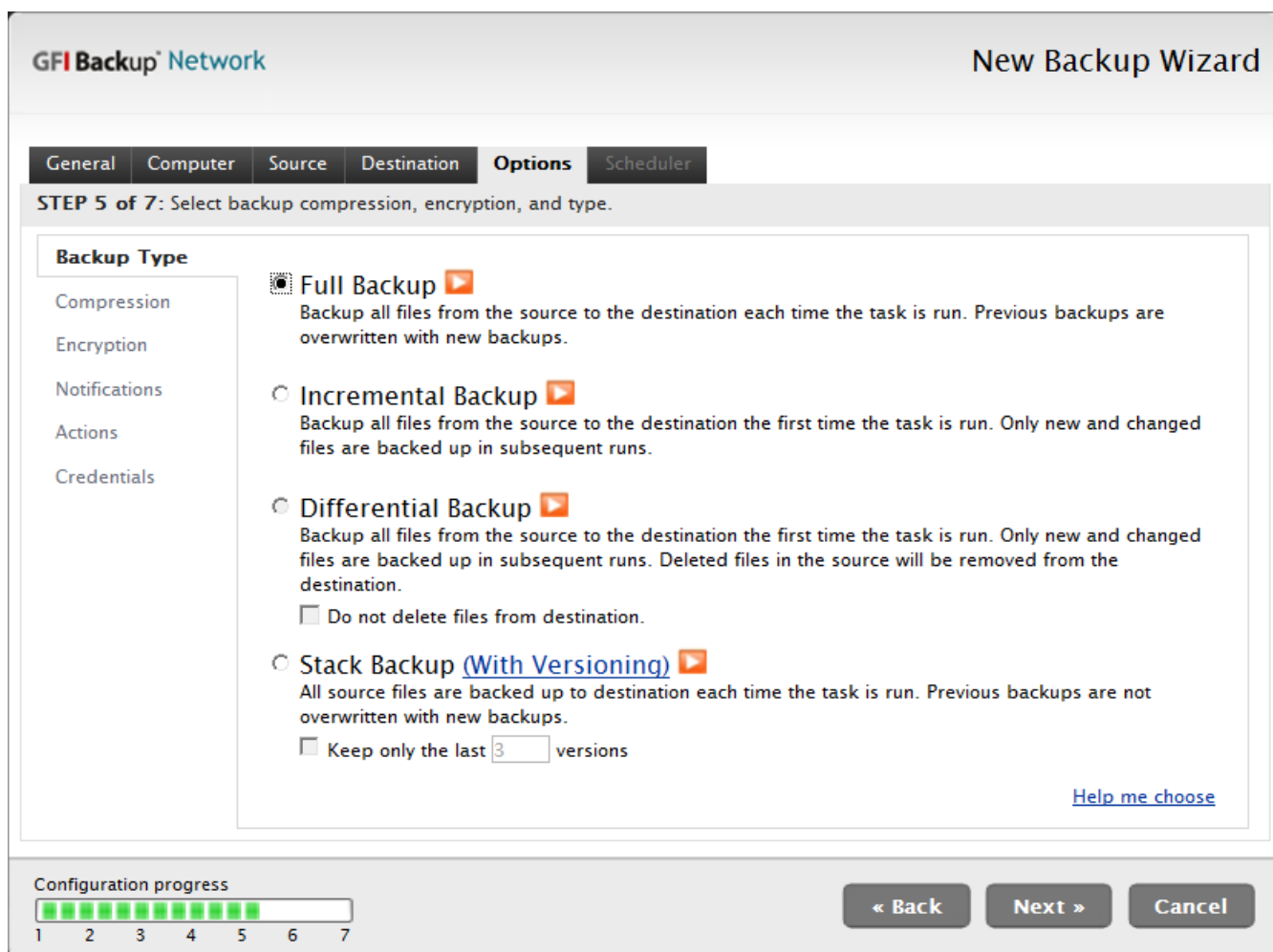
Specify the folder where to store backup archive:
Destination: C:\Destination Browse
You can use the following variables into your path:
%COMPUTERNAME%
%WORKGROUP%
%USERNAME%
%DOMAIN%

Configuration progress
1 2 3 4 5 6 7

« Back
Next »
Cancel

Screenshot 13: Test backup: Destination tab

7. In the **Destination** tab, select **Folder/External HDD on computer running agent** and click **Browse**. Select the source folder to backup and click **Next**.



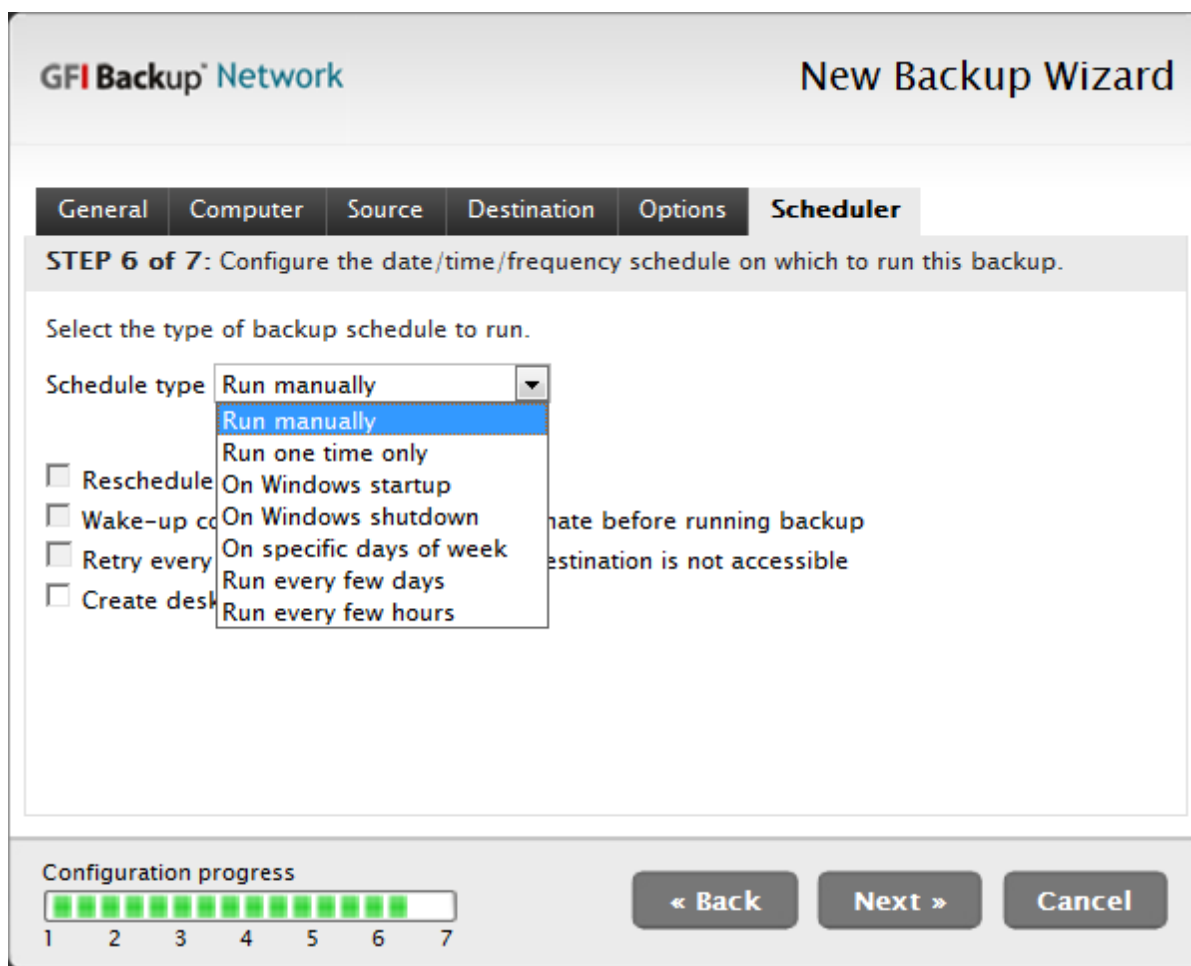
Screenshot 14: Test backup: Options tab

8. In the **Options** tab, select **Full Backup**. This will copy all data to the backup destination. Click **Next**.



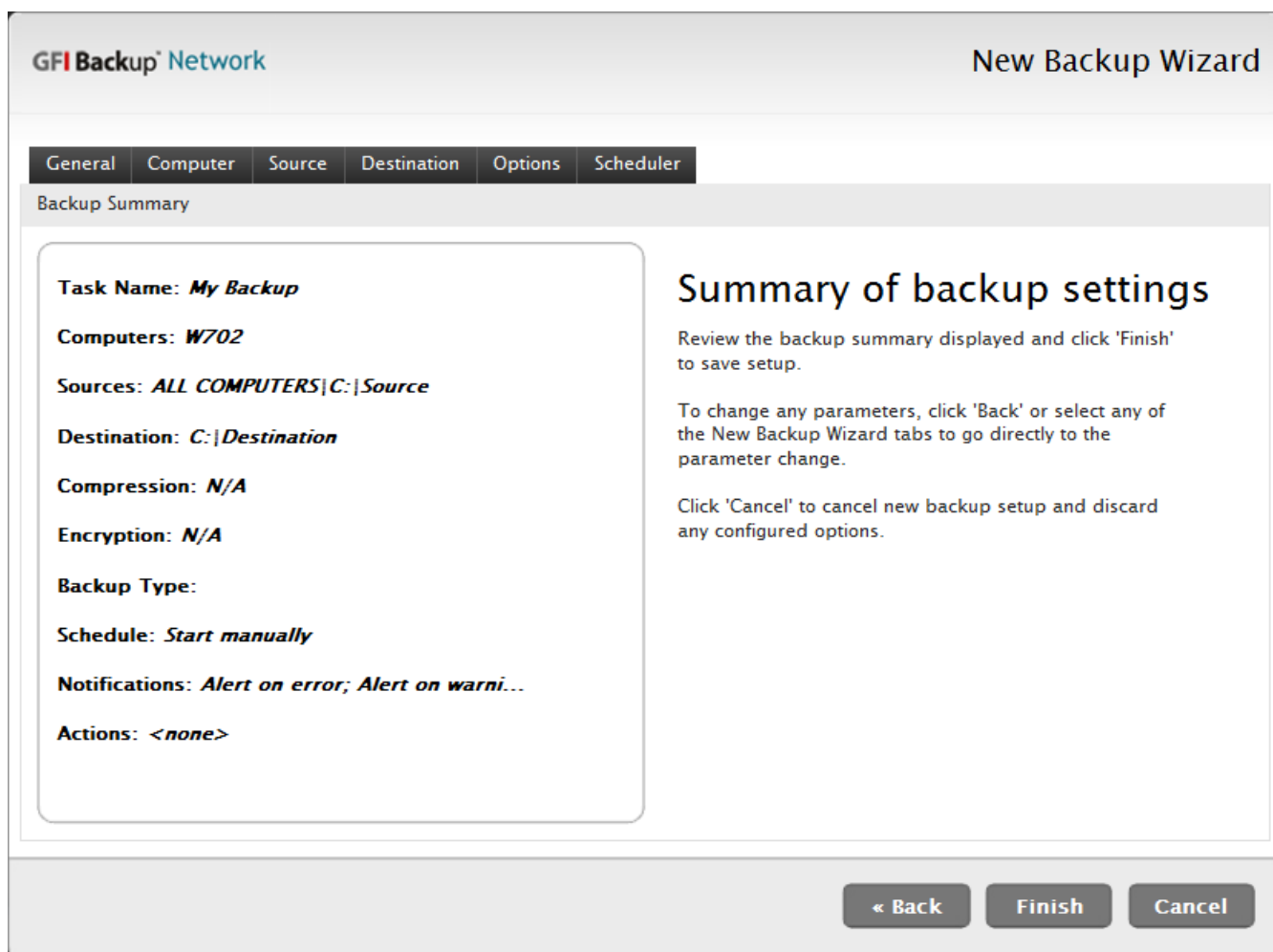
Note

For this test, all other options in the Options tab should be left to the default values. For more information on how to configure these settings, refer to the GFI BackUp Administration and Configuration Manual installed with the product.



Screenshot 15: Test backup: Scheduler tab

9. In the **Scheduler** tab, select **Run manually** from the **Schedule type** drop-down. This enables you to execute the task manually on completion of the wizard.



Screenshot 16: Test backup: Summary of backup settings dialog

10. In the **Summary of backup settings** dialog review the task being set up and click **Finish**. Click **Yes** to start backup.

3.5 Restoring test backup task

1. After the backup task is complete, locate the source files previously backed up on the local computer and either remove (delete) or rename the folder containing such files.



Note

This will facilitate the restore validation process and it will be easier to see that the files are restored.

2. From the GFI BackUp Administration Console main screen, select **Restore** and in the welcome screen, click **Next**.

3. Select **Restore Other Backup** and click **Next**.

Restore Method **Source****STEP 1 of 2:** Specify the type of restore operation to perform.

Choose one of the supported restore types shown below:

☒ **Full-backup restore**

Use this option to restore full backups.

☐ **Item-level restore**

Use this option to restore only individual items from a specific backup.

Preview: Source selection for Full-Backup Restore

GFI Backup Backup Restore Wizard

Restore Type: **Source**

STEP 2 of 2: Specify the backup source to restore.

Select the backup session to restore. Only one backup can be restored during this restore session.

Select Computer	Backup Name	Type	Size	Backup Destination	Encrypt/Compress	Schedule	Last Run
<input checked="" type="radio"/> Computers & Users	<input checked="" type="radio"/> FileServer Backup1	Full	200MB	J:\Ext_HD_1	✓	✓	Run once 01/02/09
<input type="radio"/> Computer 1	<input type="radio"/> FileServer Backup2	Full	20MB	J:\Ext_HD_1	✓	✓	Run once 01/02/09
<input type="radio"/> Computer 2	<input type="radio"/> FileServer Backup3	Full	120MB	D:\Ext_HD_3	✓	✓	Daily 01/06/09
<input type="radio"/> Computer 3	<input type="radio"/> FileServer Backup4	Full	50MB	D:\Ext_HD_2	✓	✓	Weekly 01/06/09
	<input type="radio"/> FileServer Backup5	Full	30MB	E:\CDRom	✓	✓	Run once 01/02/09

Restore Configuration progress: 1 2 3

<< Back Next >> Close

Configuration progress



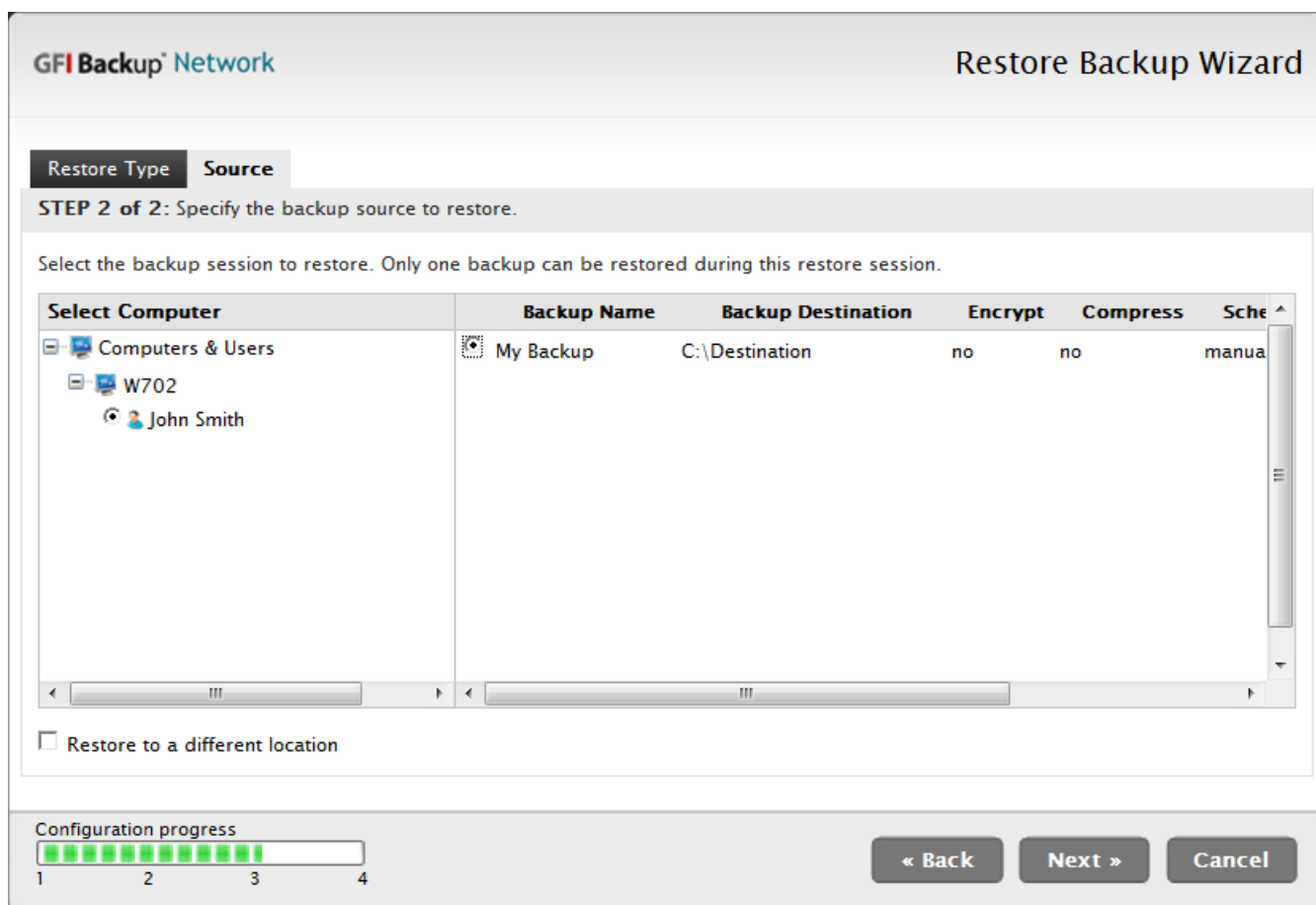
<< Back

Next >>

Cancel

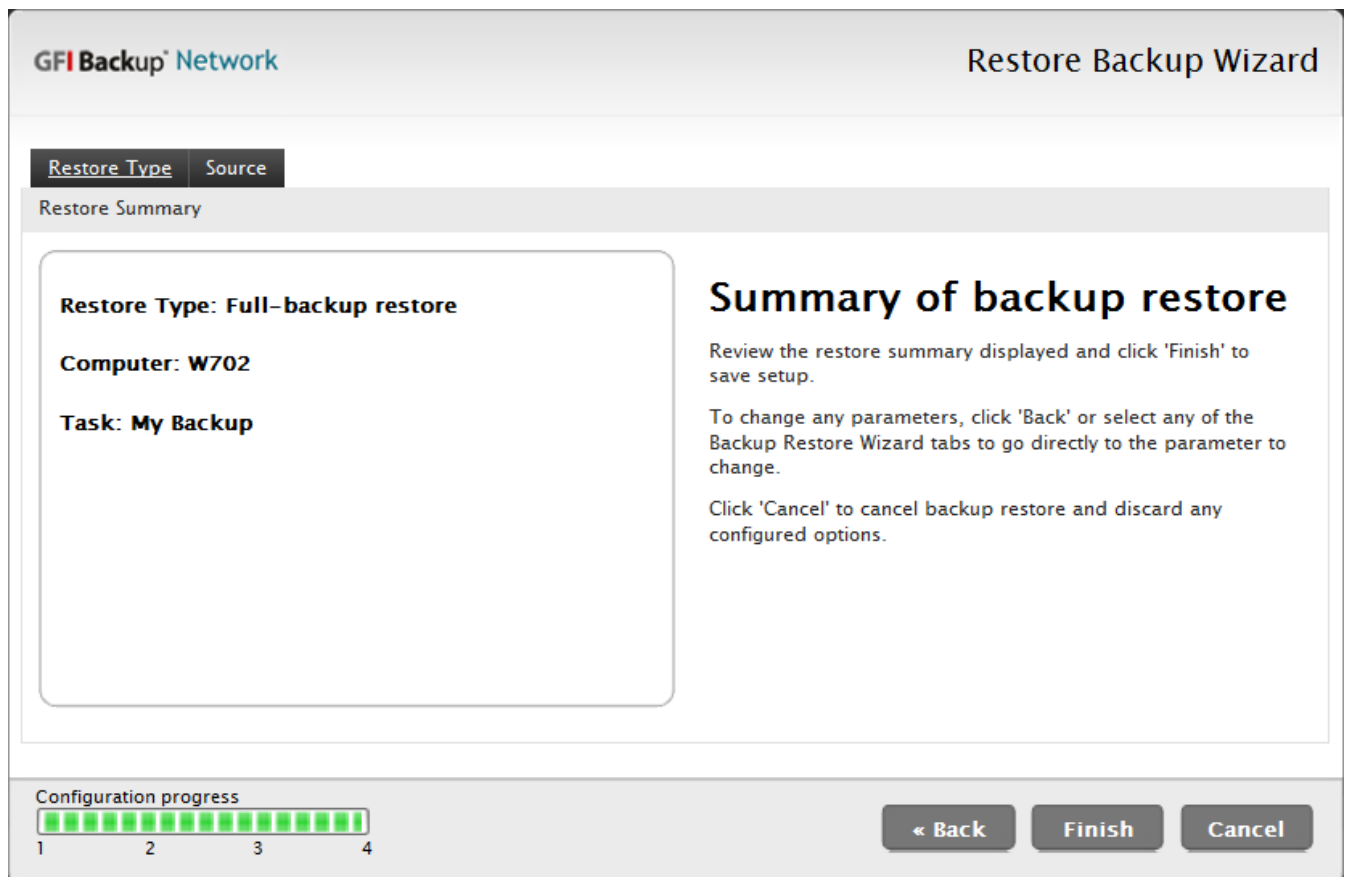
Screenshot 17: Test restore: Selecting Full-Backup restore

4. In the **Restore Type** tab, select **Full-backup restore** and click **Next**.



Screenshot 18: Test restore: Select computer and backup to restore

5. From the **Select Computer** list, select the user for which to restore data.
6. From the list of backups displayed, select the backup to restore.
7. <Optional> To restore to a location different from the original location, select **Restore to a different location**, key in the path and click **Next** to continue restore configuration. Alternatively, to restore to the original location, click **Next**.



Screenshot 19: Test restore: Summary of backup restore dialog

8. In the **Summary of backup restore** dialog, review the restore information displayed.
9. Click **Finish** to start restore operation and wait for the task to complete.

3.6 Validating the restore process

Check that the contents of the restored folders match the original source files previously backed up. Files should match in both content and attributes.

4 Troubleshooting and support

4.1 Introduction

This chapter explains how to resolve any issues encountered during installation of GFI BackUp. The main sources of information available to solve these issues are:

- » This manual - most issues can be solved through the information in this section.
- » GFI Knowledge Base articles
- » Web forum
- » Contacting GFI Technical Support

4.2 Common Issues

For the GFI BackUp Frequently Asked Questions page, refer to:

<http://kbase.gfi.com/showarticle.asp?id=KBID003779>

Issue Encountered	Solution
GFI BackUp does not load startup wizard or login screen.	<p>Possible Cause</p> <p>On some Microsoft Windows Server installations, GFI BackUp user interface might not load until GFI BackUp is added as a trusted site.</p> <p>Actions</p> <p>Add GFI BackUp website as a trusted site within Internet Explorer.</p> <ol style="list-style-type: none">1. In Internet Explorer, select Tools > Internet Options.2. Select Security tab, choose Trusted Sites icon and click Sites.3. Uncheck 'Require server verification (https :) for all sites in this zone' option, add the GFI Backup website (for example, 192.168.3.27:5580) as a trusted site and click Add.4. Click Close and OK to exit.
GFI BackUp does not back up open files.	<p>Possible Cause</p> <p>There might be a problem with Microsoft Volume Shadow Copy Service (VSS).</p> <p>Actions</p> <p>Refer to http://kbase.gfi.com/showarticle.asp?id=KBID003549 for a detailed procedure on how to solve VSS issues.</p>

4.3 Knowledge Base

GFI maintains a comprehensive Knowledge Base repository, which includes answers to the most common installation problems. In case that the information in this manual does not solve your installation problems, next refer to the Knowledge Base. The Knowledge Base always has the most up-to-date listing of technical support questions and patches. Access the Knowledge Base by visiting:

<http://kbase.gfi.com/>.

4.4 Web Forum

User to user technical support is available via the GFI web forum. Access the web forum by visiting:

<http://forums.gfi.com/>.

4.5 Request technical support

If none of the resources listed above enable you to solve your issues, contact the GFI Technical Support team by filling in an online support request form or by phone.

- » **Online:** Fill out the support request form and follow the instructions on this page closely to submit your support request on: <http://support.gfi.com/supportrequestform.asp>

- » **Phone:** To obtain the correct technical support phone number for your region visit: <http://www.gfi.com/company/contact.htm>



NOTE

Before contacting Technical Support, have your Customer ID available. Your Customer ID is the online account number that is assigned to you when first registering your license keys in the GFI Customer Area at: <http://customers.gfi.com>.

We will answer your query within 24 hours or less, depending on your time zone.

4.6 Documentation

If this manual does not satisfy your expectations, or if you think that this documentation can be improved in any way, let us know via email on: documentation@gfi.com.

5 Glossary

A

Active Directory

A technology that provides a variety of network services, including LDAP-like directory services.

Advanced Encryption Standard

An encryption standard approved by and in use, amongst others, by the National Security Agency (NSA) of the U.S. Government for the encryption of sensitive material. While it is slower than ZIP encryption, it is more secure.

Advanced Intelligent Tape

A proprietary technology owned by Sony based on helical scan like DAT but different tape technology. It is not as popular as DAT due to significant cost difference and the format is considered End-Of-Life. Sony joined HP to further develop media for DAT/DDS drives.

AES

See Advanced Encryption Standard

AIT

See Advanced Intelligent Tape

Authorize agent

An operation triggered at the GFI Backup Administration Console that enables an installed agent to be used with GFI Backup.

B

Backup actions

Actions automatically performed by GFI Backup just before or after a backup is taken. This includes running applications (for example, anti-virus) and backup verification.

Backup destination

The location where backups will be located once a backup is completed.

Backup notifications

The visual and audio notifications displayed or sent to users on specific events being triggered, for example, send email notification on backup task successful execution.

Backup policy

Rules and procedures in force within an organization that enable that organization to take adequate amounts and types of backup. This includes testing of the restore processes.

Backup rotation scheme

A method used to backup data effectively where different media is moved from storage to use and vice versa.

Backup schedule

The schedule that the backup task will be executed upon, for example, execute weekly on Thursday at 23:00.

Backup source

The data that will be backed up by the backup task in question.

Backup task name

A user-friendly name used to identify backup tasks name within GFI Backup.

Backup window

The time period during which a system is available for backups.

Blu-ray disk

An optical disc storage medium designed to cater for capacities up to 50 Gigabytes.

C**Compression**

A mechanism that enables the encoding of information using a reduced number of bits to represent data. This enables considerable savings in terms of storage space.

Compression level

The level of compression applied to a specific data set.

Credentials

A user name and password used to authenticate users within systems.

D**Daily Backup Status report**

A report that enables users to keep track of the status of backup tasks on a daily basis. It is automatically generated and distributed via email on a daily basis and takes into consideration only the tasks executed during the previous 24 hours.

DAT

See Digital Audio Tape

Deployment

The act of installing software on to a system, for example, the installation of the GFI Backup Agent on client computers.

Desktop applications

Applications installed on the computers where GFI Backup Agent is installed and which can be backed up by GFI Backup.

Differential Backup

A replace backup type where all the data changed since last full-backup is backed. Typically, this backup is slower to take but faster to restore.

Digital Audio Tape

The most popular tape format in use at the low end of the tape drive market. Capacities vary from 72GB to 320GB.

Digital Linear Tape

A proprietary technology owned by Quantum. DLT-V is targeted for small and medium-sized businesses while DLT-S/SDLT is a high capacity range aimed for enterprise and larger businesses. DLT-S / SDLT also support DLT-V for backward compatibility. DLT includes WORM capability It supports Hardware compression with a compressed capacity up to 1.6TB per cartridge and also higher data throughput than DAT drives.

Disaster recovery

The process of recovering and restoring data in the eventuality of a disaster. It is highly recommended that such a process is planned, audited and tested on a regular basis.

DLT

See Digital Linear Tape

E

Encryption settings

The settings that enable GFI Backup to encrypt the data to back up. This includes the type of encryption (ZIP/AES) and the encryption password.

F

FTP location

A remote backup destination accessible via the FTP protocol where the files to be backed up by GFI Backup will be stored.

Full-Backup

A backup type where all the data will be backed up, regardless of whether this data was previously backed up or not.

Full-Backup Restore

The complete restore of a backup previously taken.

G

GFI Backup Agent

A software application deployed on the computers to back up data from that enables GFI Backup to collect, archive and compress data to a central backup destination.

GFI LANguard

A GFI application that provides network security scanning and vulnerability management services. Can be also used to deploy software such as the GFI Backup Agent. Refer to <http://www.gfi.com/lannetscan> for more information on GFI LANguard.

H

Hot backup

The backup of a database that has not been stopped for backup purposes.

I

Incremental Backup

A replace backup type where only the data changed in the period between the backup being taken and the last backup taken is backed. Typically this backup type is faster to take but slower to restore.

Item level restore

A type of backup restore where only selected files/folders/settings are restored.

L

LAN folder

A backup destination on a LAN where backups will be saved on the successful execution of a backup task.

Linear Tape Open

An open standard for magnetic data tape storage which is supported by LTO consortium initiated by Seagate, HP and IBM. It is the product of choice for high performance backups in an enterprise and large business. LTO is cheaper and more readily available (Ultrium form factor) than DLT-S /SDLT while performance is almost the same. LTO also supports Encryption.

LTO

See Linear Tape Open

M

Media Spanning

The process of splitting a backup task across multiple media to backup data which volume is more than what the media allows.

Microsoft Volume Shadow Copy Service

A Microsoft Windows OS (Windows XP and Windows 2003 onwards) that provides the backup infrastructure for Windows based computers and servers. Also provides a mechanism for creating consistent point-in-time copies of data known as shadow copies. It is also the service through which open files can be backed up.

O

Open File Backup

The ability of a software application to take a backup of a file that is currently in use. Within GFI Backup this is possible through VSS.

R

Registry keys

Entries within the Microsoft Windows system file that contains varied information about the Windows operating system as well as configuration information about installed applications.

Remote Store

A backup that is permanently stored in an offsite facility for disaster recovery purposes.

Replace Backup

A type of backup where rather than taking a full-backup, only the files that changed since the last backup are archived. This data replaces the data in the original fileset and, due to the lower volume of data to backup, is quicker to take.

S

Self extracting archive

A type of zip archive that requires no software for decompression.

Stack Backup

A type of backup similar to a full-backup but which append a version number to files previously backed up.

Status monitor

A visual mechanism within GFI Backup Administration Console that enables users to discover various statistics on the functions of GFI Backup.

T

Tape

A backup medium where data is stored on a magnetic tape.

U

Unauthorized agent

The process through which agents previously authorized are set as unauthorized. This invalidates the GFI Backup Agent functionality and operations (backups and restores) can no longer be performed.

User permissions

A set of rules that define what operations users can execute with the GFI Backup Agent installed on their computer.

V

VSS

See Microsoft Volume Shadow Copy Service

W

Workgroup

A Microsoft peer-to-peer computer network where members can access each other's resources such as files, printers, and internet connection.

Z

ZIP password protection

A data compression and archive format that offers encryption mechanisms that are faster than AES but less secure.

6 Appendix - Credentials for remote operations

6.1 Introduction

On all Microsoft systems, an entity that requests access to data requires rights to access such data, otherwise access is denied. In the case of GFI BackUp, the credentials are defined in **Settings > Backup /Restore Settings** as the method used by GFI BackUp to acquire read rights.



Note

When installing GFI BackUp Network Edition, the wizard will guide you to configure the Data Access Method. For more information, refer to [Post install configurations](#) (page 16).

Since different networks have different requirements, GFI BackUp cannot automatically determine what a network's requirements are. This setting enables GFI BackUp to:

- » Provide a single set of account credentials with rights to all the data to back up (for example, a domain or local administrator password)
- » Have network users provide their own password, which will be securely stored and used at the time of backup to access data residing on the computers that they use.

6.2 One account for all

This method is typically recommended for Active Directory environments where system administrators have exact control over users and permissions. Through a single account with domain or local administrator privileges, or an ad-hoc account purposely created with rights over the data to access, you typically can access all the data over the network and have GFI BackUp back it up for you.

This method is also applicable in Microsoft Windows Workgroup environments if you create an administrator account on each and every computer on the workgroup with the same set of login credentials. While this might be feasible for small networks, this may not be practical in larger workgroup environments due to the management overhead.

To configure GFI BackUp to use this method, select **Use the following user account credentials** and key-in a set of credentials that have read/write access over all the data to back up. These credentials are typically your domain or local administrator credentials which have full access rights to the data to backup. For added security you may also however, create an ad-hoc, administrative, account with “read” rights over all the data to back up and “write” rights over all the locations to restore data to.

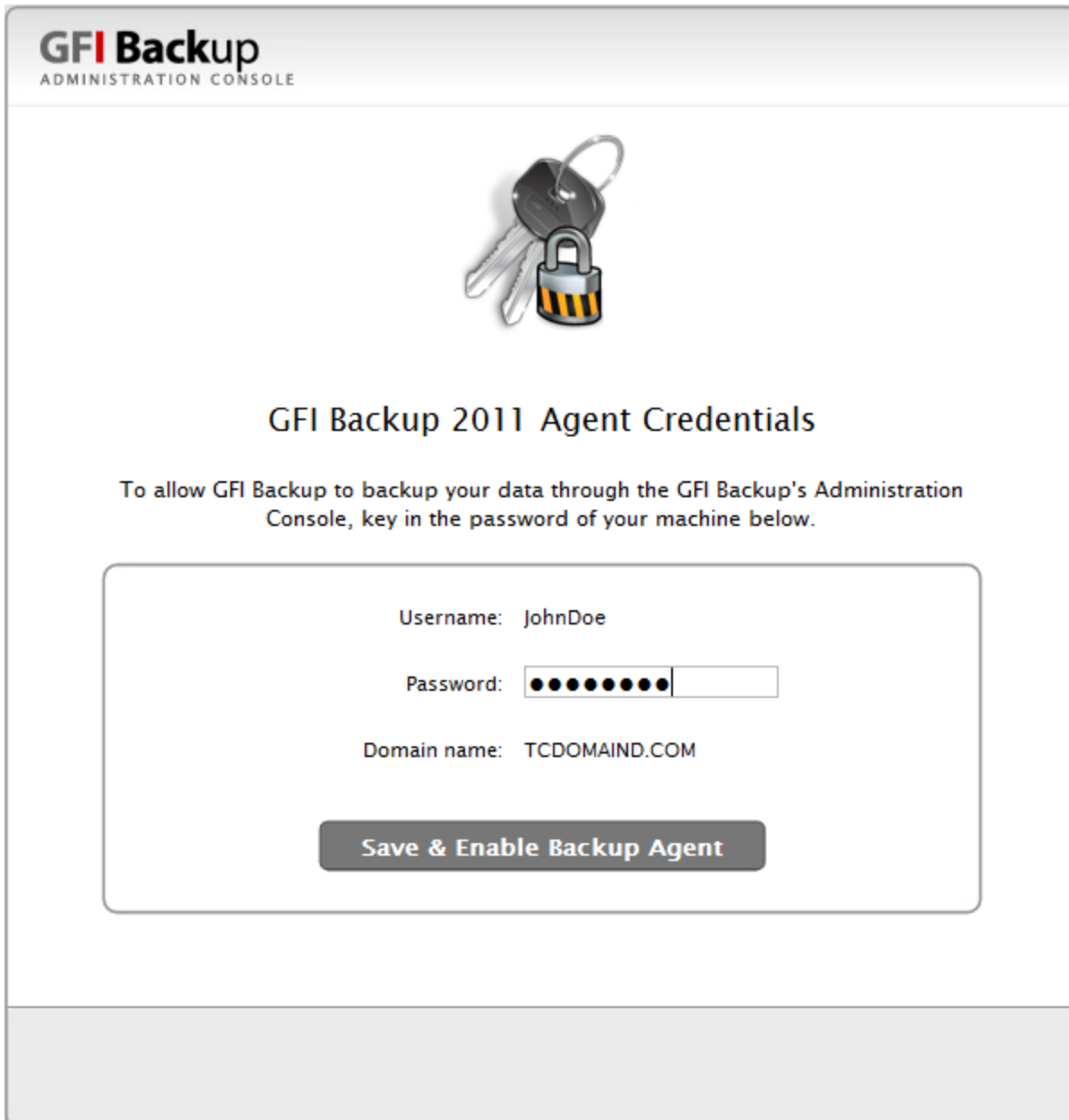
The account to be used should be keyed in using one of the following two formats:

- » domain\username
- » username@domain.com

6.3 Credentials supplied by users

This method is typically recommended for workgroups where the use of a single, common user account cannot be relied upon to access data on networked computers. In this case, users will be asked to key in their login credentials via the GFI BackUp Agentlogin credentials screen. These credentials are then securely stored and used at the time of backup execution to access the data to back up.

This option can also be used in Microsoft Windows Active Directory environments. It is however often not required since typically providing the credentials of a user with rights to access all data to back up in the Single account method requires less management overhead.



The screenshot displays the 'GFI Backup 2011 Agent Credentials' window. At the top, there is a logo for 'GFI Backup ADMINISTRATION CONSOLE' and an icon of a key and a padlock. Below this, the title 'GFI Backup 2011 Agent Credentials' is centered. A message states: 'To allow GFI Backup to backup your data through the GFI Backup's Administration Console, key in the password of your machine below.' The form contains three input fields: 'Username: JohnDoe', 'Password: [masked with dots]', and 'Domain name: TCDOMAIN.COM'. A large button at the bottom is labeled 'Save & Enable Backup Agent'.

Screenshot 20: GFI BackUp Agent: Credentials screen

Choosing the **Use credentials supplied by users**, will prompt users to provide their credentials at these times:

- » **Upon agent installation:** The user installing the agent will be asked to provide his/her credentials when the agent is installed.
- » **Upon first login:** Users other than the one that installed the agent will be asked to provide their credentials when they log in for the first time on a computer that has the agent installed.
- » **Upon credential changes:** Users will automatically be asked to re-supply their passwords when their login credentials change.

- » **Upon password resets:** Users will automatically be asked to re-supply their passwords if you instruct GFI BackUp to reset a user's password. This is done from the **Agents > Properties > Users > Reset Password** option.

6.3.1 Password Security

GFI takes your network security very seriously. To ensure that your passwords are as secure as possible when in transit and when stored in the GFI BackUp database we have taken the following actions:

- » All credential information exchanges between your network computers and GFI BackUp are securely encrypted to prevent anyone from reading your data while this is in transit.
- » All credential information stored within the GFI BackUp database is securely encrypted.

7 Index

A

Active Directory 39-40

B

Backup destination 25

Backup task name 21

C

Common Issues 31

Credentials 8, 14, 17, 39

D

Data access method 16, 39

Deployment 8

Disaster recovery 6

Documentation 32

E

Encryption 6

F

FTP location 20

Full backup 25

Full-backup restore 28

K

Knowledge Base 31

M

Microsoft Volume Shadow Copy Service 31

P

Proxy settings 18

T

Technical Support 31

Troubleshooting and support 31

U

User permissions 7

W

Web Forum 31

USA, CANADA AND CENTRAL AND SOUTH AMERICA

15300 Weston Parkway, Suite 104 Cary, NC 27513, USA

Telephone: +1 (888) 243-4329

Fax: +1 (919) 379-3402

ussales@gfi.com

ENGLAND AND IRELAND

Magna House, 18-32 London Road, Staines, Middlesex, TW18 4BP, UK

Telephone: +44 (0) 870 770 5370

Fax: +44 (0) 870 770 5377

sales@gfi.com

EUROPE, MIDDLE EAST AND AFRICA

GFI House, San Andrea Street, San Gwann, SGN 1612, Malta

Telephone: +356 2205 2000

Fax: +356 2138 2419

sales@gfi.com

AUSTRALIA AND NEW ZEALAND

83 King William Road, Unley 5061, South Australia

Telephone: +61 8 8273 3000

Fax: +61 8 8273 3099

sales@gfiap.com

