



# AVG LinkScanner

## User Manual

### **Document revision 2012.03 (13.9.2011)**

Copyright AVG Technologies CZ, s.r.o. All rights reserved.  
All other trademarks are the property of their respective owners.

This product uses RSA Data Security, Inc. MD5 Message-Digest Algorithm, Copyright (C) 1991-2, RSA Data Security, Inc. Created 1991.

This product uses code from C-SaCzech library, Copyright (c) 1996-2001 Jaromir Dolecek (dolecek@ics.muni.cz).

This product uses compression library zlib, Copyright (c) 1995-2002 Jean-loup Gailly and Mark Adler.



## Contents

<b>1. Introduction</b>	<b>4</b>
<b>2. Installation Requirements</b>	<b>5</b>
2.1 Operation Systems Supported	5
2.2 Web Browsers Supported	5
2.3 Hardware Requirements	5
<b>3. Installation Process</b>	<b>6</b>
3.1 Welcome	6
3.2 Select Type of Installation	7
3.3 Custom Options	8
3.4 Install the AVG Security Toolbar	9
3.5 Install Progress	9
3.6 Installation was successful	10
<b>4. After Installation</b>	<b>11</b>
4.1 Access to User Interface	11
4.2 Default Configuration	11
<b>5. User Interface</b>	<b>12</b>
5.1 System Menu	13
5.1.1 File	13
5.1.2 Components	13
5.1.3 History	13
5.1.4 Tools	13
5.1.5 Help	13
5.1.6 Support	13
5.2 Security Status Info	15
5.3 Quick Links	16
5.4 Components Overview	16
5.5 System Tray Icon	16
<b>6. Components</b>	<b>18</b>
6.1 Link Scanner	18
6.1.1 Link Scanner Interface	18
6.1.2 Search-Shield detections	18
6.1.3 Surf-Shield detections	18



<b>7. AVG Security Toolbar</b>	<b>22</b>
<b>8. Advanced Settings</b>	<b>24</b>
8.1 Appearance	24
8.2 Temporarily disable AVG LinkScanner protection	26
8.3 AVG LinkScanner settings	27
8.4 Update	28
8.4.1 Proxy	28
8.4.2 Dial-up	28
8.4.3 URL	28
8.5 Ignore Module Status Warnings	33
8.6 Product Improvement Program	34
<b>9. Updates</b>	<b>35</b>
<b>10. FAQ and Technical Support</b>	<b>36</b>



## 1. Introduction

This user manual offers a general overview of the tasks and detection technologies provided by **AVG LinkScanner®**. We will briefly talk about the program installation, initial startup, configuration and use.

**AVG LinkScanner®** is provided free-of-charge. It is up and running immediately from the moment of installation. All basic settings have been pre-set by the manufacturer, so most of the time you will not have to worry about anything – just let **AVG LinkScanner®** work in the background and protect you without any effort on your part. However, there might be situations where you need to adjust the program settings, or decide what to do with a virus infected file; this manual is here to provide detailed information and assist you with any task.



## 2. Installation Requirements

### 2.1. Operation Systems Supported

**AVG LinkScanner®** is intended to protect computers with the following operating systems:

- Windows XP Home Edition SP2
- Windows XP Professional SP2
- Windows XP Professional x64 Edition SP1
- Windows Vista (x86 and x64, all editions)
- Windows 7 (all editions)

(and possibly higher service packs for specific operating systems).

### 2.2. Web Browsers Supported

**AVG LinkScanner®** is fully compatible with the following Internet browsers:

- Microsoft Internet Explorer 6.0 or higher
- Mozilla Firefox 3.0 or higher
- Google Chrome

### 2.3. Hardware Requirements

Minimum hardware requirements for **AVG LinkScanner®** are as follows:

- Intel Pentium CPU 1,0 GHz
- 600 MB (Windows XP)/138 MB (Windows 7) of free hard drive space, for installation purposes
- 256 MB of RAM memory

Recommended hardware requirements for **AVG LinkScanner®** are as follows:

- Intel Pentium CPU 1,5 GHz
- 1050 MB (Windows XP) /138 MB (Windows 7) of free hard drive space, for installation purposes
- 512 MB of RAM memory

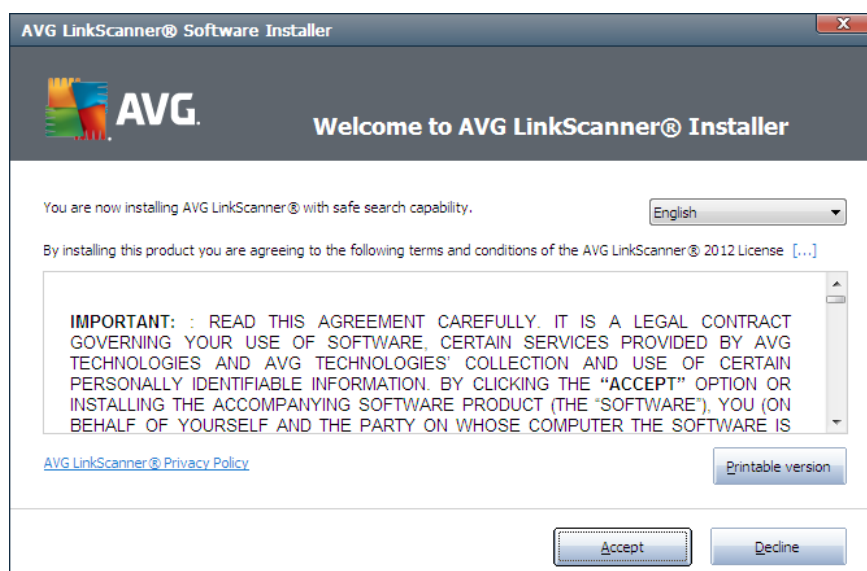


### 3. Installation Process

To download the installation file of **AVG LinkScanner®**, visit the [AVG LinkScanner](http://linkscanner.avg.com/) website at <http://linkscanner.avg.com/> and follow the **AVG LinkScanner®** download link. Once you have downloaded and saved the installation file on your hard disk, you can launch the installation process. The installation is a sequence of dialog windows with a brief description of what do at each step. In the following, we offer an explanation for each dialog window:

#### 3.1. Welcome

The installation process starts with the **Welcome to AVG LinkScanner® Installer** dialog window:

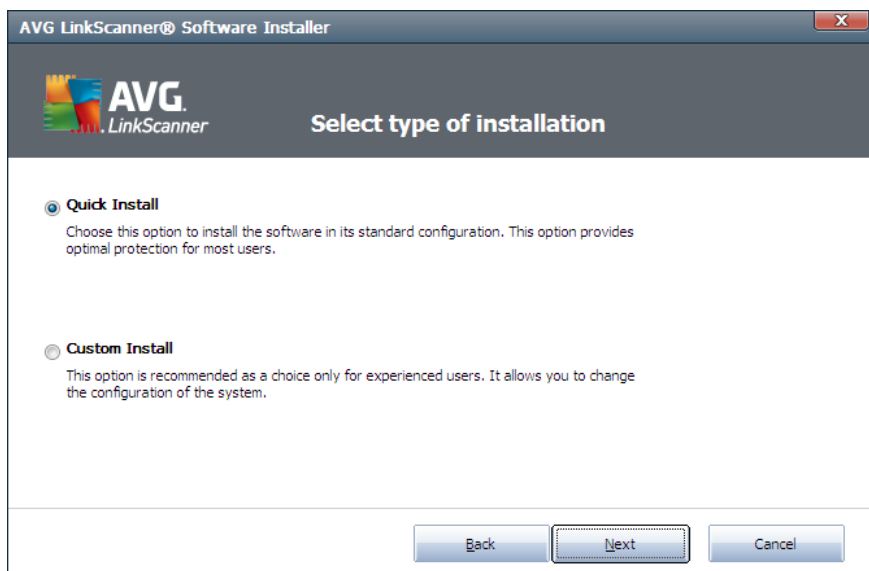


The drop-down menu in the upper right-hand corner allows you to select the language for the installation. This selection applies to the installation process language as well as to the application language. However, the language of the application can be changed as needed any time after the installation (see the [Advanced settings / Appearance](#) dialog).

Further, the dialog provides information on **AVG LinkScanner®** terms of use. Please read it carefully and confirm that you have read, understood and accept the agreement by pressing the **Accept** button. If you do not agree with the terms of use stated press the **Decline** button, and the installation process will be terminated (*In case you have pressed the Decline button by a mistake, you will be asked to confirm your decision to quit the installation process before it is actually terminated.*).



### 3.2. Select Type of Installation



The **Select type of installation** dialog offers the choice of two installation options: **quick** and **custom** installation.

For most users, it is highly recommended to keep to the **Quick Install** option that installs **AVG LinkScanner®** in fully automatic mode with settings predefined by the program vendor. This configuration provides maximum security combined with the optimal use of resources. In the future, if the need arises to change the configuration, you will always have the possibility to do so directly in the **AVG LinkScanner®** application.

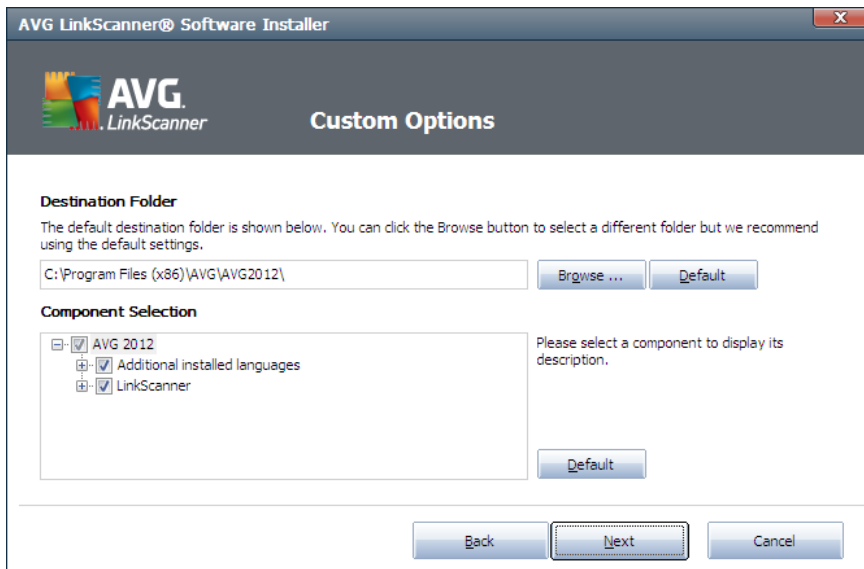
**Custom Install** should only be used by experienced users who have a valid reason to install **AVG LinkScanner®** with non-standard settings, e.g. to fit specific system requirements.

Press the **Next** button to continue.



### 3.3. Custom Options

The **Custom Options** dialog allows you to set up two parameters of the installation:



#### Destination Folder

Within the **Destination Folder** section of the dialog you are supposed to specify the location where **AVG LinkScanner®** should be installed. By default, AVG will be installed to the program files folder located on drive C:. If you want to change this location, use the **Browse** button to display the drive structure, and select the respective folder. And, once you have changed the location and wish to revert to the default destination pre-set by the software vendor, you can do so by pressing the **Default** button.

#### Component Selection

The **Component Selection** section provides an overview of all **AVG LinkScanner®** components that can be installed. If the default settings do not suit you, you can remove/add specific components.

**However, you can only select from components that are included in your purchased AVG edition!**

Highlight any item in the **Component Selection** list, and a brief description of the respective component will be displayed on the right side of this section. For detailed information on each component's functionality please consult the [Components Overview](#) chapter of this documentation. To revert to the default configuration pre-set by the software vendor use the **Default** button.

Press the **Next** button to continue.





### 3.4. Install the AVG Security Toolbar



In the **Install the AVG Security Toolbar** dialog, decide whether you want to install the [AVG Security Toolbar](#). If you do not change the default settings, this component will be installed automatically into your Internet browser (*currently supported browsers are Microsoft Internet Explorer v. 6.0 or higher, and Mozilla Firefox v. 3.0 or higher*) to provide you with comprehensive online protection while surfing the Internet.

Press the **Next** button to continue.

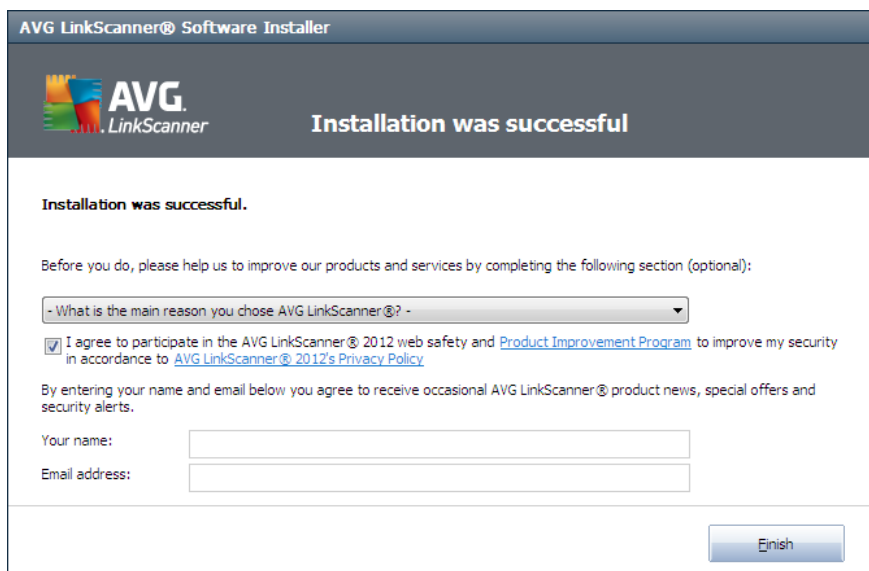
### 3.5. Install Progress

The **Install Progress** dialog shows the progress of the installation process, and does not require any intervention. Please wait until the installation is complete, then you will be redirected to the [Installation was successful](#) dialog:



### 3.6. Installation was successful

The **Installation was successful** dialog is the last step of the **AVG LinkScanner®** installation process. **AVG LinkScanner®** is now installed on your computer and fully functional. The program is running in the background in fully automatic mode.





## 4. After Installation

### 4.1. Access to User Interface

The **AVG LinkScanner®** [main dialog](#) is accessible in several ways:

- double-click the [AVG system tray icon](#)
- double-click the AVG icon on the desktop
- from the menu **Start/All Programs/AVG Standalone LinkScanner/AVG User Interface**

### 4.2. Default Configuration

The default configuration (*i.e. how the application is set up right after installation*) of **AVG LinkScanner®** is set up by the software vendor so that all functions are tuned up to achieve optimum performance.

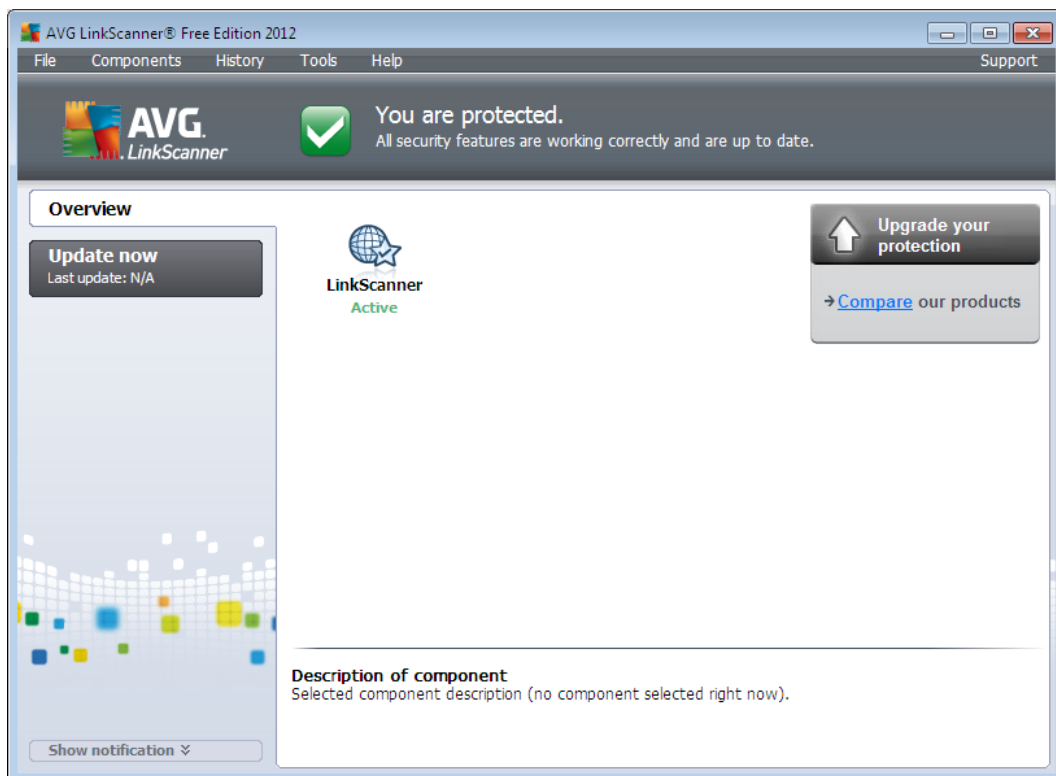
***Unless you have a real reason to do so, do not change the AVG LinkScanner® configuration! Changes to settings should only be performed by an experienced user.***

Some minor editing of the settings is accessible directly in the LinkScanner component dialog. If you feel you need to change the **AVG LinkScanner®** configuration to better suit your needs, go to the [Advanced Settings](#): select the system menu item Tools/Advanced settings and edit the configuration in the newly opened the [Advanced Settings](#) dialog.



## 5. User Interface

AVG LinkScanner® opens with the main dialog:



The main window is divided into several sections:

- **System Menu** (top system line in the window) is the standard navigation that allows you to access all **AVG LinkScanner®** components, services, and features - [details >>](#)
- **Security Status Info** (upper section of the window) provides you with information on the current status of your **AVG LinkScanner®** program - [details >>](#)
- **Quick Links** (left section of the window) allow you to quickly access the most important and most frequently used **AVG LinkScanner®** tasks - [details >>](#)
- **Components Overview** (central section of the window) offer an overview of installed **AVG LinkScanner®** components - [details >>](#)
- **Upgrade your protection** (right) - the link takes you to AVG website providing information on further and enhanced option of Internet Security
- **System Tray Icon** (bottom right corner of the monitor, in the system tray) indicates the current **AVG LinkScanner®** status - [details >>](#)



## 5.1. System Menu

The **System menu** is the standard navigation used in all Windows applications. It is located horizontally in the very top part of the **AVG LinkScanner®** main window. Use the system menu to access specific components, features and services.

The system menu is divided into six main sections:

### 5.1.1. File

- **Exit** - closes the **AVG LinkScanner®**'s user interface. However, the application will continue running in the background and your computer will still be protected!

### 5.1.2. Components

The [Components](#) item of the system menu includes links to installed components of **AVG LinkScanner®**, opening their default dialog page in the user interface:

- **System overview** - switch to the default user interface dialog with the [overview of installed components and their status](#)
- **Link Scanner** checks the search results displayed in your internet browser - [details >>](#)

### 5.1.3. History

- **Blocked websites** - displays the list of all potentially dangerous websites previously blocked by **AVG LinkScanner®**. You can update this list by clicking **Refresh list** button.
- **Exploits prevented** - displays the list of all dangerous exploits prevented by **AVG LinkScanner®**. You can update this list by clicking **Refresh list** button.

### 5.1.4. Tools

- **Update** - automatically launches the update process of **AVG LinkScanner®**
- **Update from folder ...** - runs the update process from the update files located in a specified folder on your local disk. However, this option is only recommended as an emergency, e.g. in situations where there is no connection to the Internet (*for example, your computer is infected and disconnected from the Internet; your computer is connected to a network with no access to the Internet, etc.*). In the newly opened window select the folder where you have previously placed the update file, and launch the update process.
- **Remove AVG Security Toolbar** - this option removes the **AVG Security Toolbar** from your web browser. The settings will demonstrate only after the browser restart.
- **Advanced settings** - opens the [AVG advanced settings](#) dialog where you can edit the **AVG LinkScanner®** configuration. Generally, it is recommended to keep the default settings of the application as defined by the software vendor.



### 5.1.5. Help

- **Contents** - opens the AVG help files
- **Get Help Online** - opens the [AVG Free web](#) at the customer support center page
- **About Web-based Threats** - opens the [AVG free web](#) on the page referring to web-technologies based threats, and describing details of the [AVG LinkScanner®](#) functionality
- **Submit Product Feedback** - opens the [Product Feedback](#) webpage containing online form that allows you to send your opinion on **AVG LinkScanner®** to the manufacturer
- **Get Comprehensive Protection** - opens the [AVG website](#) offering a comparative overview of the protection level provided by free version versus full professional AVG application, and inviting you to buy the required commercial AVG product.
- **Premium Support** - opens your browser and takes you to [AVG Support Center page](#), where you can select your product type to view all support options available for you.
- **About AVG LinkScanner®** - opens the **Information** dialog with six tabs providing data on program name, program and virus database version, system info, license agreement, support links, and contact information of **AVG Technologies CZ**.

### 5.1.6. Support

The **Support** link opens a new **Information** dialog with all types of information you might need when trying to find help. The dialog includes basic data on your installed AVG program (*program / database version*), license details, and a list of quick support links.

The **Information** dialog is divided into six tabs:

The **Version** tab is divided into three sections:

- **Support Information** - Provides information on **AVG LinkScanner®** version, and [LinkScanner](#) core version.
- **User Information** - Provides information on the licensed user and company.
- **License Details** - Provides information on your license (*product name, license type, license number, expiration date, and number of seats*).

On the **Program** tab you can find information on the **AVG LinkScanner®** program file version, and on the third parties code used in the product.

The **System** tab offers a list of parameters of your operating system (*processor type, operating system and its version, build number, service packs used, total memory size, and free memory size*).



On the **License Agreement** tab you can read the full wording of the license agreement between you and AVG Technologies.

The **Support** tab brings a list of all possibilities of contacting the customer support. Also, it provides links to AVG website (<%AVG\_WEBSITE%>), AVG forums, FAQ, ... Further you can find information you might use while contacting the customer support team.

The **Contacts** tab provides a list of all contacts to AVG Technologies, and also contacts to AVG local representatives and resellers.

## 5.2. Security Status Info

The **Security Status Info** section is located in the upper part of the main window. Within this section you will always find information on the current security status of your **AVG LinkScanner®**. Please see an overview of icons possibly depicted in this section, and their meaning:



The green icon indicates that your **AVG LinkScanner®** is fully functional. Your computer is completely protected, up to date and all installed components are working properly.



The orange icon warns that one or more components are incorrectly configured and you should pay attention to their properties/settings. There is no critical problem in **AVG LinkScanner®** and you have probably decided to switch some component off for some reason. You are still protected by **AVG LinkScanner®**. However, please pay attention to the problem component's settings! Its name will be provided in the **Security Status Info** section.



The red icon indicates that **AVG LinkScanner®** is in critical status! One or more components does not work properly and **AVG LinkScanner®** cannot protect your computer. Please pay immediate attention to fixing the reported problem.

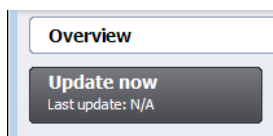
It is strongly recommended that you pay attention to **Security Status Info** and in case the report indicates any problem, go ahead and try to solve it immediately. Otherwise your computer is at risk!

**Note:** *AVG LinkScanner® status information can also be obtained at any moment from the [system tray icon](#).*



### 5.3. Quick Links

**Quick links** (left in the main dialog) allow you to immediately access the most important and most frequently used **AVG LinkScanner®** features:



- **Overview** - use this link to switch from any currently opened **AVG LinkScanner®** interface to the default one with an overview of all installed components - see chapter [Components Overview](#)
- **Update now** - this link open the updating interface, and launches the **AVG LinkScanner®** update process immediately - see chapter [Updates](#)

These links are accessible from the user interface at all times. Once you use a quick link to run a specific process, the GUI will switch to a new dialog but the quick links are still available. Moreover, the running process is further graphically depicted.

### 5.4. Components Overview

The **Components Overview** section is located in the central part of the [main dialog](#). The section is divided into two parts:

- Overview of all installed components consisting of a panel with the component's icon and the information of whether the respective component is active or inactive
- Description of a selected component

Within the **AVG LinkScanner®** the **Components Overview** section contains information on the following components:

- **AVG LinkScanner** checks the search results displayed in your internet browser - [details >>](#)

Highlight any component's icon to display the component's basic functionality description in the bottom part of the user interface. Single-click the icon to open the components own interface with a list of basic statistical data.



### 5.5. System Tray Icon

**AVG System Tray Icon** (on your Windows taskbar, right-hand bottom corner of your monitor) indicates the current status of your **AVG LinkScanner®**. It is visible at all times on your system tray, no matter whether the [user interface](#) of your **AVG LinkScanner®** is opened or closed.

#### AVG System Tray Icon display





-  In full color with no added elements the icon indicates that all **AVG LinkScanner®** components are active and fully functional. However, the icon can also be displayed this way in a situation when one of the components is not fully functional but the user has decided to [ignore the component state](#). *(Having confirmed the ignore the component state option you express you are aware of the [component's error state](#) but for some reason you wish to keep it so, and you do not want to be warned about the situation.)*
-  The icon with an exclamation mark indicates that a component (or even more components) are in [error state](#). Always pay attention to such a warning and try to remove the configuration issue of a component that is not set up properly. In order to be able to perform the changes in component's configuration, double click the system tray icon to open the [application user interface](#). For detailed information on which components is in [error state](#) please consult the [security status info](#) section.

### Actions accessible from AVG System Tray Icon

**AVG System Tray Icon** can also be used as a quick link to access the [user interface](#) of **AVG LinkScanner®**, just double click on the icon. By right-click on the icon you open a brief context menu with the following options:

- **Open AVG LinkScanner®** - Click to open the [user interface](#) of **AVG LinkScanner®**.
- **Update now** - Launches an immediate [update](#).
- **Help** - Opens the help file on the start page.



## 6. Components

### 6.1. Link Scanner

**LinkScanner** protects you from the increasing number of 'here today, gone tomorrow' threats on the web. These threats can be hidden on any type of website, from governments to big, well-known brands to small businesses, and they rarely stick around on those sites for more than 24 hours.

**LinkScanner** protects you by analyzing the web pages behind all the links on any web page you're viewing and making sure they're safe at the only time that matters – when you're about to click that link.

Within **AVG LinkScanner®**, the **LinkScanner** technology consists of two main features:

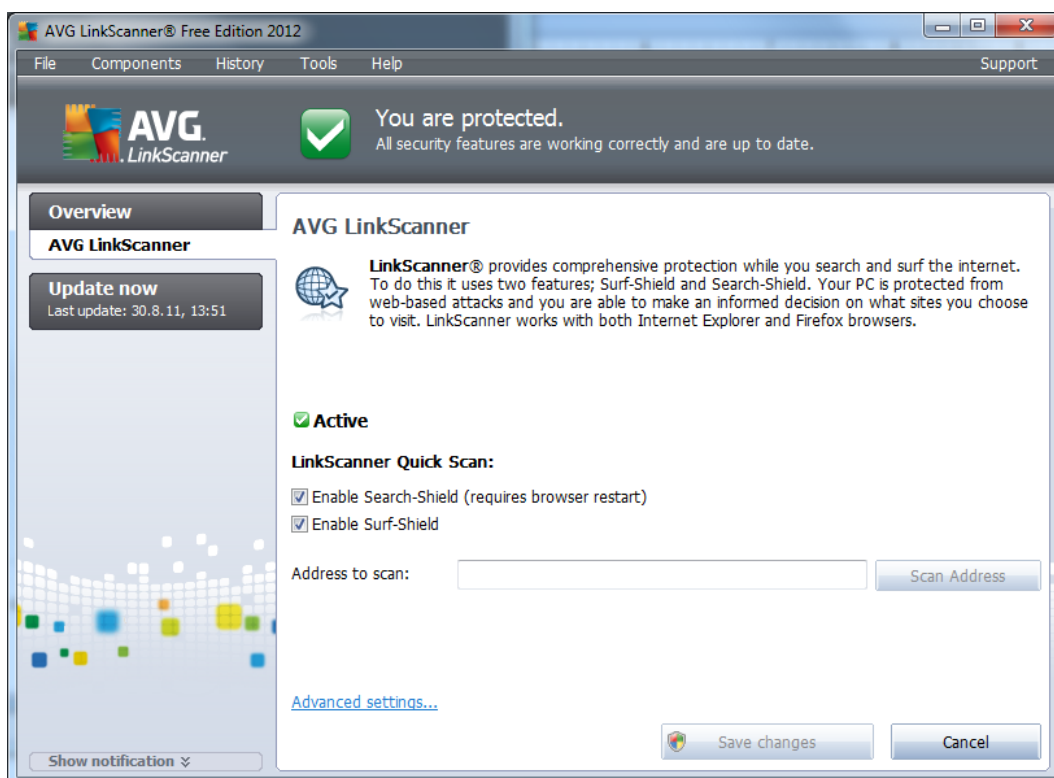
- [Search-Shield](#) contains list of websites (URL addresses) which are known to be dangerous. When searching with Google, Yahoo!, WebHledani, Yandex, Baidu, Bing, AOL, AltaVista, EarthLink, Ask, and Seznam, all results of the search are checked according to this list and a verdict icon is shown. [Search-Shield](#) is also supported for Facebook, Twitter, and MySpace.
- [Surf-Shield](#) scans the contents of the websites you are visiting, regardless of the websites address. Even if some website is not detected by [Search-Shield](#) (e.g. *when a new malicious website is created, or when a previously clean website now contains some malware*), it will be detected and blocked by [Surf-Shield](#) once you try to visit it.

**Note:** *LinkScanner is not intended for server platforms!*



### 6.1.1. Link Scanner Interface

The [LinkScanner](#) component dialog provides a brief description of the component's functionality and information on its current status (*Active*):



#### LinkScanner Quick Scan

Within this section you can purposefully scan a defined web address. Type in the URL of the specific web (e.g. [www.avg.com](http://www.avg.com)) to the text field, and press the **Scan Address** button. [LinkScanner](#) checks the address immediately and returns the results informing you whether there were any threats detected in the required URL, and whether it is safe to go on to that website.

#### LinkScanner Settings

In the central part of the dialog you can edit several options:

- **Enable [Search-Shield](#)** - (on by default): Advisory notifying icons on searches performed with Google, Yahoo!, WebHledani, Yandex, Baidu, Bing, AOL, AltaVista, EarthLink, Ask, or Seznam. [Search-Shield](#) is also supported for social networks Facebook, Twitter, and MySpace: having checked ahead the content of sites returned by the search engine.
- **Enable [Surf-Shield](#)** - (on by default): Active (*real-time*) protection against exploitive sites as they are accessed. Known malicious site connections and their exploitive content is blocked as they are accessed by the user via a web browser (*or any other application that*



uses HTTP).

### 6.1.2. Search-Shield detections

When searching Internet with the **Search-Shield** on, all search results returned from the most popular search engines (*Google, Yahoo! JP, WebHledani, Yandex, Baidu, Bing, AOL, AltaVista, EarthLink, Ask, Seznam, eBay, Twitter, Digg, and SlashDot*) are evaluated for dangerous or suspicious links. By checking these links and marking the bad links, the [Link Scanner](#) warns you before you click on dangerous or suspicious links, so you can ensure you only go to safe websites.

While a link is being evaluated on the search results page, you will see a graphic sign next to the link informing that the link verification is in progress. When the evaluation is complete, the respective informative icon will be displayed:



The linked page is safe.



The linked page does not contain threats but is somewhat suspicious (*questionable in origin or motive, therefore not recommended for e-shopping etc.*).



The linked page can be either safe itself, but containing further links to positively dangerous pages; or suspicious in code, though not directly employing any threats at the moment.

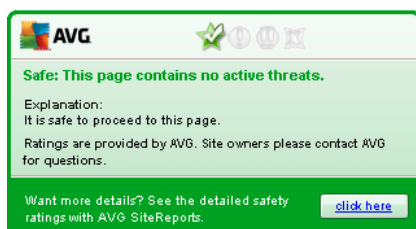


The linked page contains active threats! For your own safety, you will not be allowed to visit this page.



The linked page is not accessible, and so could not be scanned.

Hovering over an individual rating icon will display details about the particular link in question. Information include additional details of the threat (*if any*):

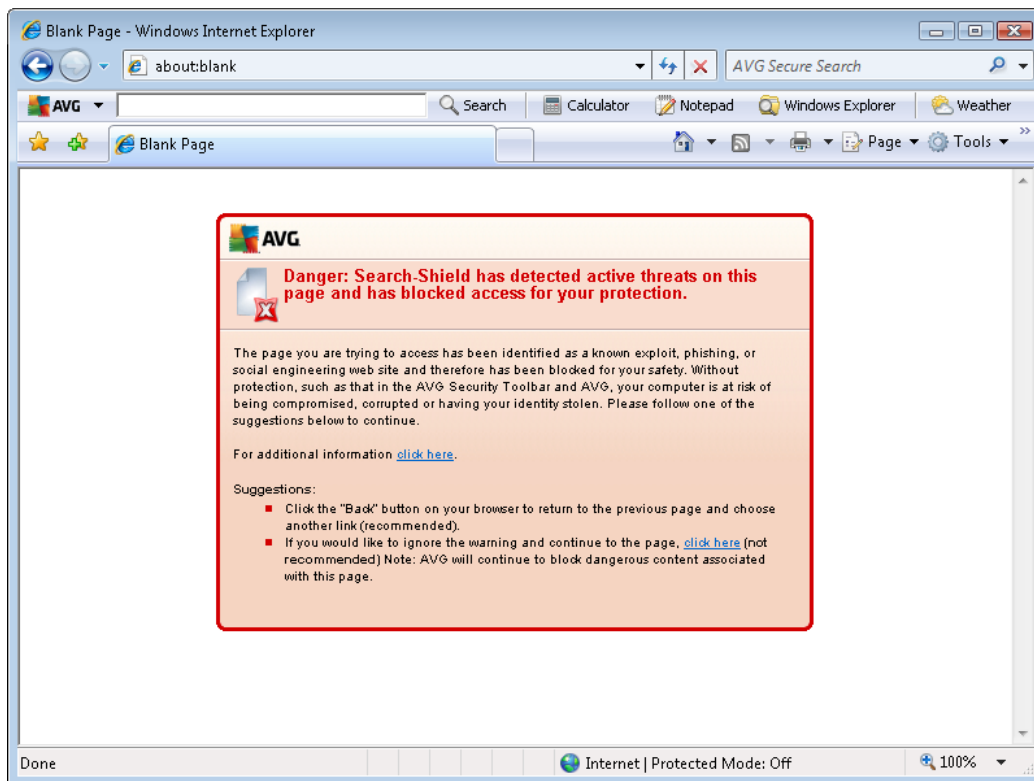


### 6.1.3. Surf-Shield detections

This powerful protection will block malicious content of any webpage you try to open, and prevent it from being downloaded to your computer. With this feature enabled, clicking a link or typing in a URL to a dangerous site will automatically block you from opening the web page thus protecting you from inadvertently being infected. It is important to remember that exploited web pages can infect your computer simply by visiting the affected site, for this reason when you request a dangerous webpage containing exploits or other serious threats, the [Link Scanner](#) will not allow your browser to display it.



If you do encounter a malicious web site, within your web browser the [Link Scanner](#) will warn you with a screen similar to:

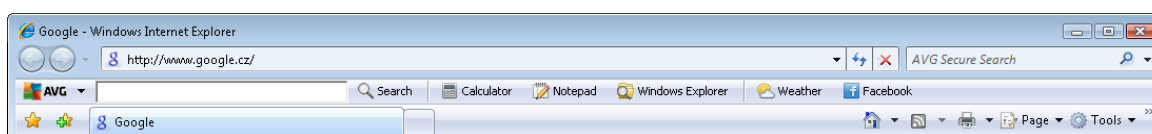


***Entering such web site is highly risky and it cannot be recommended!***



## 7. AVG Security Toolbar

**AVG Security Toolbar** is a tool that closely cooperates with the [LinkScanner](#) component, and guards your maximum security while browsing the Internet. Within **AVG LinkScanner®**, the installation of **AVG Security Toolbar** is optional; during the [installation process](#) you were invited to decide whether the component should be installed. **AVG Security Toolbar** is available directly in your Internet browser. At the moment, the supported Internet browsers are Internet Explorer (version 6.0 and higher), and/or Mozilla Firefox (version 3.0 or higher). No other browsers are supported (in case you are using some alternative Internet browser, e.g. Avant Browser, you can meet unexpected behavior).



**AVG Security Toolbar** consists of the following items:

- **AVG logo** with the drop-down menu:
  - **Use AVG Secure Search** - Allows you to search directly from the **AVG Security Toolbar** using the **AVG Secure Search** engine. All search results are continuously checked by the [Search-Shield](#) service, and you can feel absolutely safe online.
  - **Current Threat Level** - Opens the virus lab web page with a graphical display of the current threat level on the web.
  - **AVG Threat Labs** - Opens the **Site Report** page on AVG website (<% AVG\_WEBSITE%>) where you can search the specific threats by name and get detailed information on each one.
  - **Toolbar Help** - Opens the online help covering all **AVG Security Toolbar** functionality.
  - **Submit Product feedback** - Opens a web page with a form that you can fill in and tell us how you feel about **AVG Security Toolbar**.
  - **About...** - Opens a new window with the information on currently installed **AVG Security Toolbar** version.
- **Search filed** - Search the Internet using the **AVG Security Toolbar** to be absolutely secure and comfortable since all displayed search results are hundred percent safe. Fill in the keyword or a phrase into the search field, and press the **Search** button (or **Enter**). All search results are continuously checked by the [Search-Shield](#) service (within the [LinkScanner](#) component).
- Shortcut buttons for quick access to these applications: **Calculator**, **Notepad**, **Windows Explorer**
- **Weather** - The button opens a new dialog providing information on the current weather in your location, and the weather forecast for the upcoming two days. This information is being



updated regularly, every 3-6 hours. In the dialog, you can change the desired location manually, and to decide whether you want to see the temperature info in Celsius or Fahrenheit.



- **Facebook** - This buttons allows you connect to the [Facebook](#) social network directly from the **AVG Security Toolbar**.

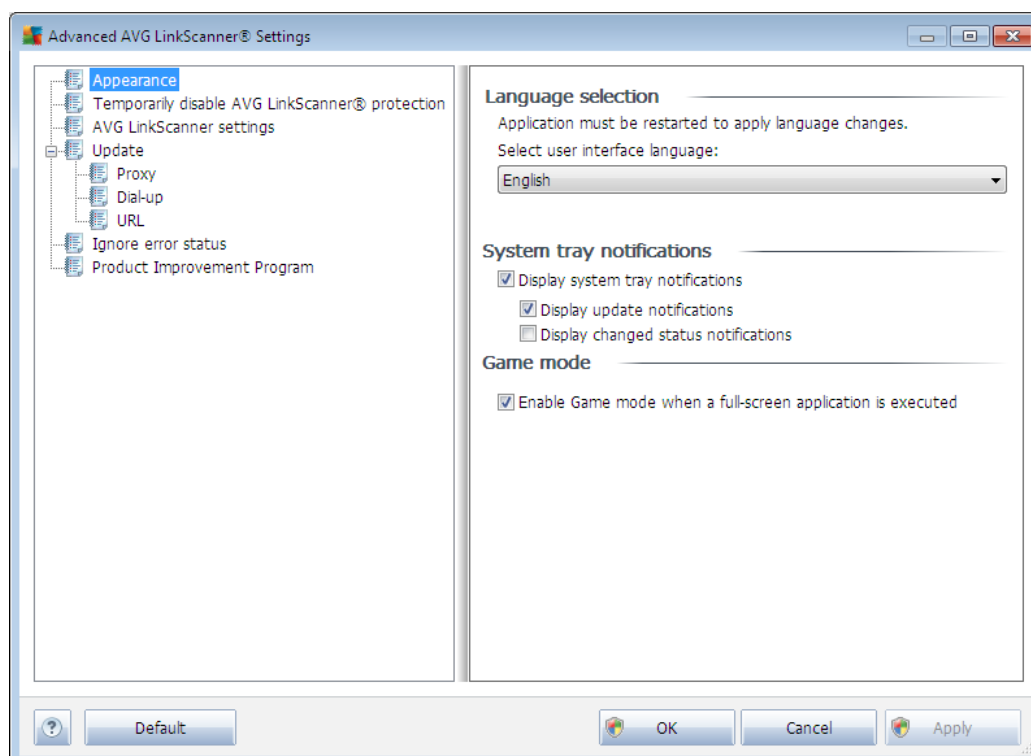


## 8. Advanced Settings

The advanced configuration dialog of **AVG LinkScanner®** opens in a new window named **Advanced AVG LinkScanner® Settings**. The window is divided into two sections: the left part offers a tree-arranged navigation to the program configuration options. Select the component you want to change the configuration of (*or its specific part*) to open the editing dialog in the right-hand section of the window.

### 8.1. Appearance

The first item of the navigation tree, **Appearance**, refers to the general settings of the **AVG LinkScanner®** [main dialog](#) and a few elementary options of the application's behavior:



#### Language selection

In the **Language selection** section you can choose your desired language from the drop-down menu; the language will then be used for the entire user interface. The drop-down menu only offers those languages you have previously selected to be installed during the [installation process](#). However, to finish switching the application to another language you have to restart the user interface; follow these steps:

- Select the desired language of the application and confirm your selection by pressing the **Apply** button.
- Press the **OK** button confirm.





- New dialog window pops-up informing you the language change of user interface requires the application restart.

### System tray notifications

Within this section you can allow/suppress display of system tray notifications on the status of the application. The system tray notifications typically inform on some **AVG LinkScanner®** component's status change, and you should pay attention to them!

However, if for some reason you decide you do not wish these notifications to be displayed, or you would like only certain notifications (related to a specific **AVG LinkScanner®** component) to be displayed, you can define and specify your preferences by checking/unchecking the following options:

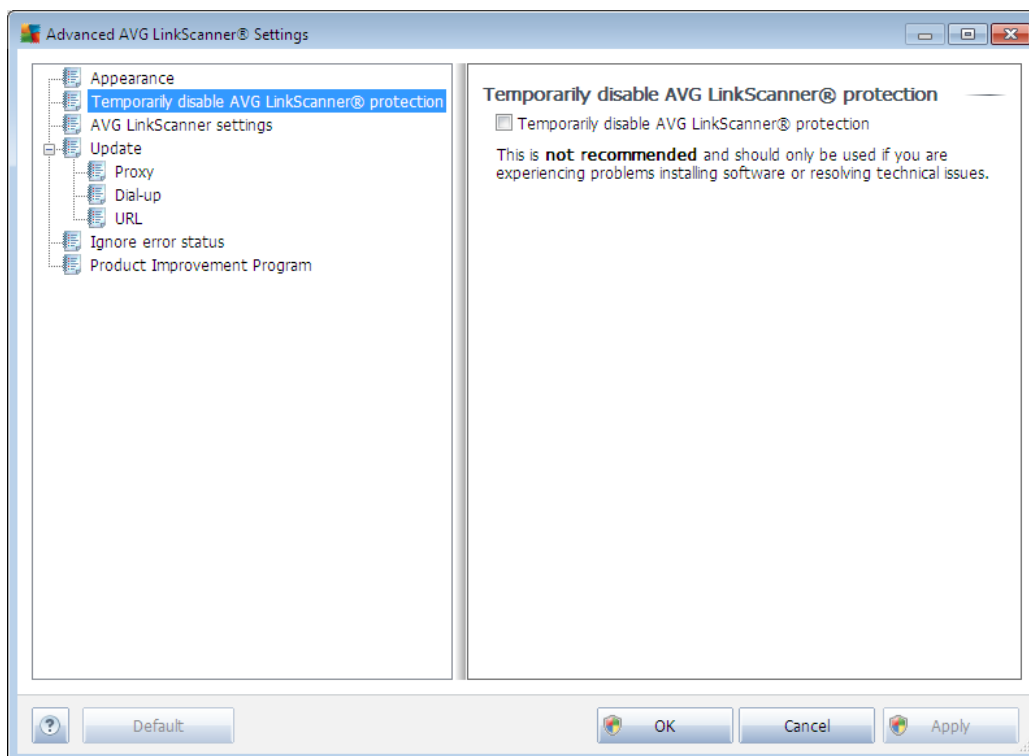
- **Display system tray notifications** - by default, this item is checked (*switched on*), and notifications are displayed. Uncheck this item to completely turn off the display of all balloon notifications. When turned on, you can further select what specific notifications should be displayed:
  - **Display update notifications** - decide whether information regarding **AVG LinkScanner®** update process launch, progress, and finalization should be displayed;
  - **Display change status notifications** - decide whether information regarding component's activity/inactivity or its possible problem should be displayed. When reporting a component's fault status, this option equals to the informative function of the [system tray icon](#) (*color changing*) reporting a problem in any **AVG LinkScanner®** component.

### Gaming mode

This AVG function is designed for full-screen applications where possible AVG information balloons ( *displayed e.g. when a scheduled scan is started*) would be disturbing (*they could minimize the application or corrupt its graphics*). To avoid this situation, keep the check box for the **Enable gaming mode when a full-screen application is executed** option marked (*default setting*).



## 8.2. Temporarily disable AVG LinkScanner protection



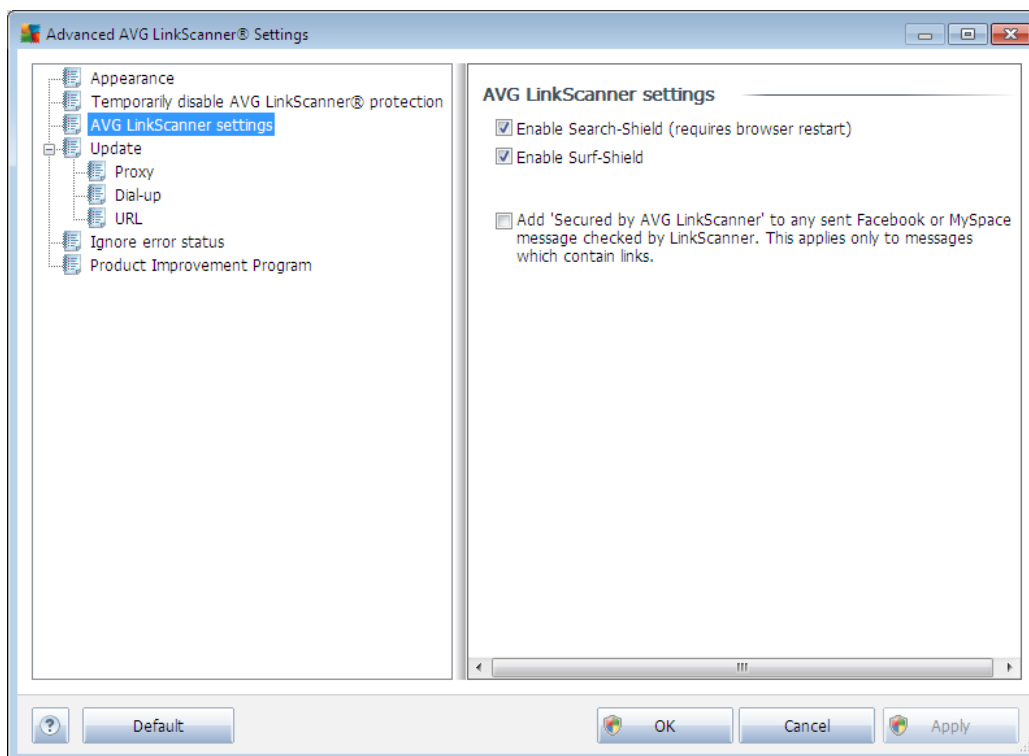
In the **Temporarily disable AVG LinkScanner® protection** dialog you have the option of switching off the entire protection secured by your **AVG LinkScanner®** at once.

***Please remember that you should not use this option unless it is absolutely necessary!***

In most cases, it is **not necessary** to disable **AVG LinkScanner®** before installing new software or drivers, not even if the installer or software wizard suggests that running programs and applications be shut down first to make sure there are no unwanted interruptions during the installation process. If you do have to temporarily disable **AVG LinkScanner®**, you should re-enable it as soon as you're done. If you are connected to the Internet or a network during the time your antivirus software is disabled, your computer is vulnerable to attacks.



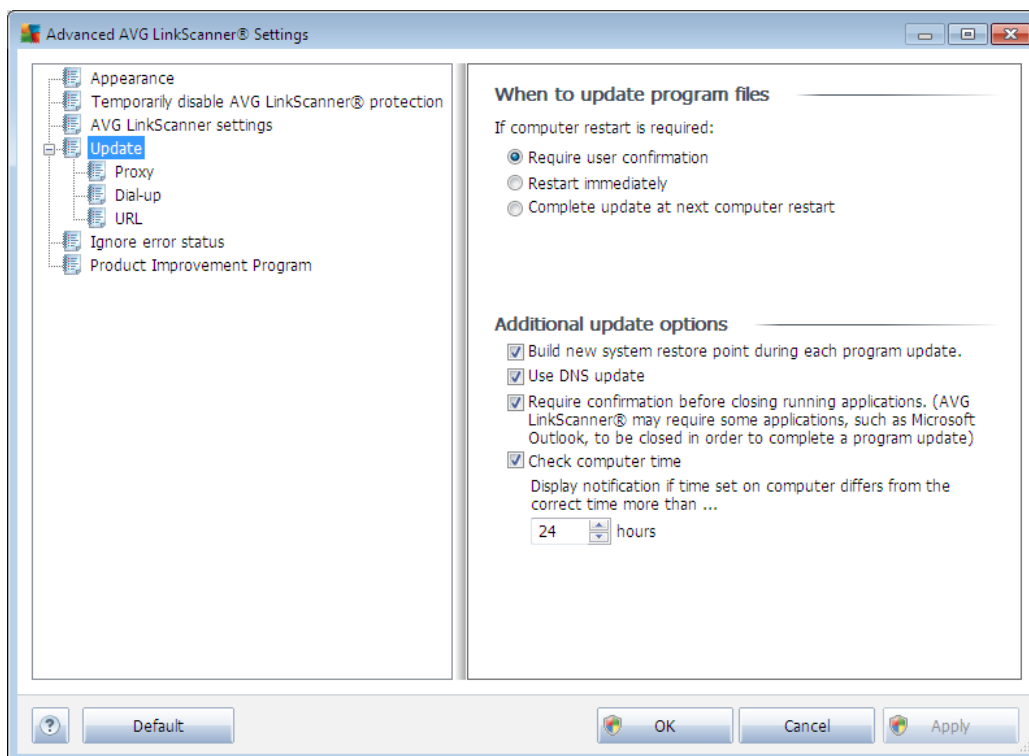
### 8.3. AVG LinkScanner settings



The **AVG LinkScanner® settings** dialog allows you to switch on/off the two elementary features of the **AVG LinkScanner®**:

- **Enable [Search-Shield](#)** - (on by default): advisory notifying icons on searches performed in Google, Yahoo!, WebHledani, Yandex, Baidu, Bing, AOL, AltaVista, EarthLink, Ask, or Seznam having checked ahead the content of sites returned by the search engine. The browsers supported are Internet Explorer and Firefox.
- **Enable [Surf-Shield](#)** - (on by default): prevents you from accidentally becoming infected by drive-by downloads and other exploits, ensuring the web pages you visit are safe at the only time that really matters - when you are about to click the link. The browsers supported are again Internet Explorer and Firefox.
- **Add 'Secured by AVG LinkScanner' to any sent Facebook or MySpace message checked by LinkScanner. This applies only to messages which contain links** (on by default).

## 8.4. Update



The **Update** navigation item opens a new dialog where you can specify general parameters regarding the [update](#) of **AVG LinkScanner®**:

### When to update program files

If the update process requires your PC restart, you can specify the circumstances under which a possible required restart should be performed:

- **Require user confirmation** - You will be asked to approve a PC restart needed to finalize the [update process](#).
- **Restart immediately** - The computer will be restarted automatically immediately after the [update process](#) has finished, and your approval will not be required.
- **Complete update at next computer restart** - The [update process](#) finalization will be postponed until the next computer restart - again, please keep in mind that this option is only recommended if you can be sure the computer gets restarted regularly, at least daily.

### Additional update options

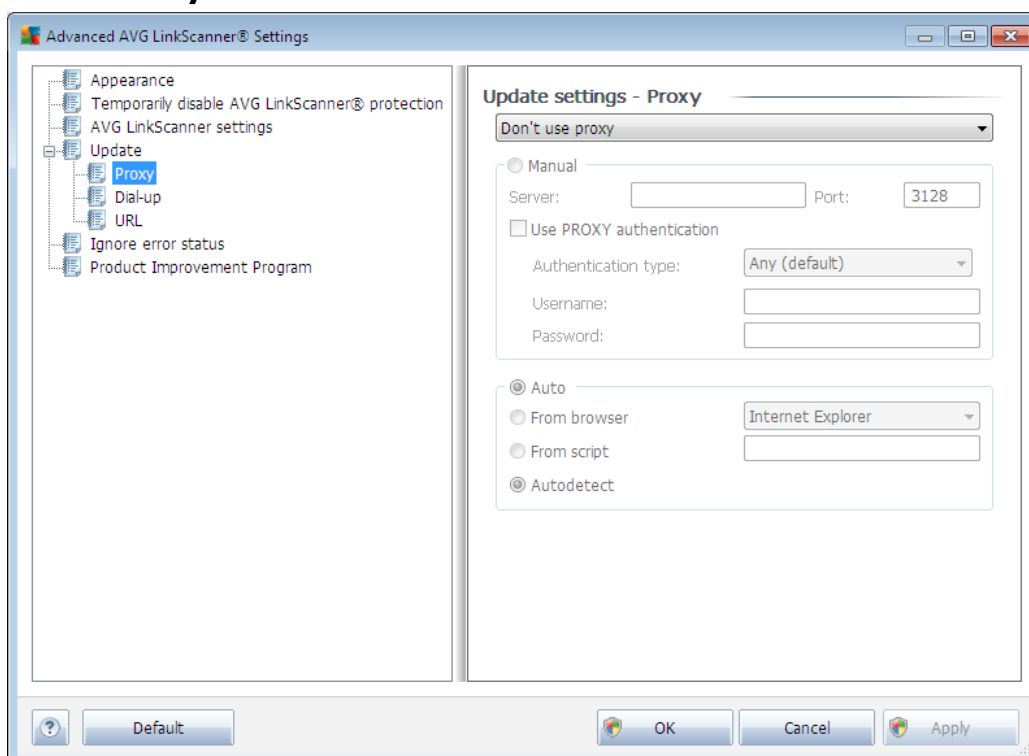
- **Build new system restore point during each program update** - before each AVG program update launch, a system restore point is created. In case the update process fails



and your operating system crashes you can always restore your OS in its original configuration from this point. This option is accessible via **Start / All Programs / Accessories / System tools / System Restore**, but any changes can be recommended to experienced users only! Keep this check-box ticked if you want to make use of this functionality.

- **Use DNS update** - mark this check box to confirm you want to use the update files detection method that eliminates data amount transferred between the update server and AVG client;
- **Require confirmation before closing running applications** (switched on by default) will help you make sure no currently running applications will be closed without your permission - if required for the update process to be finalized.
- **Check computer time** - check this box to enable displaying notification of the time set on your computer being incorrect. The notification will be displayed if the time differs from the correct time in more hours than set in the box below (the default value is 24 hours).

#### 8.4.1. Proxy



The proxy server is a stand-alone server or a service running on a PC that guarantees safer connection to the Internet. According to the specified network rules you can then access the Internet either directly or via the proxy server; both possibilities can also be allowed at the same time. Then, in the first item of the **Update settings - Proxy** dialog you have to select from the combo box menu whether you want to:

- **Use proxy**



- **Don't use proxy** - default settings
- **Try connection using proxy and if it fails, connect directly**

If you select any option using proxy server, you will have to specify some further data. The server settings can be configured either manually or automatically.

### Manual configuration

If you select manual configuration (check the **Manual** option to activate the respective dialog section) you have to specify the following items:

- **Server** – specify the server's IP address or the name of the server
- **Port** – specify the number of the port that enables Internet access (*by default, this number is set to 3128 but can be set differently – if you are not sure, contact your network administrator*)

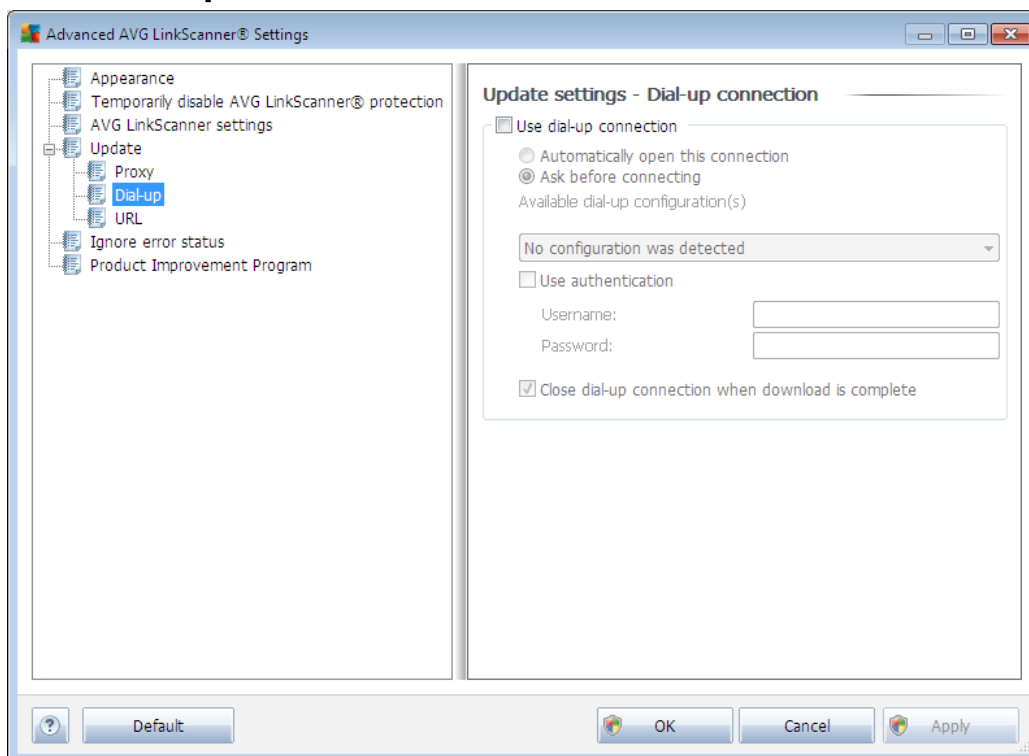
The proxy server can also have configured specific rules for each user. If your proxy server is set up this way, check the **Use PROXY authentication** option to verify that your user name and password are valid for connecting to the Internet via the proxy server.

### Automatic configuration

If you select automatic configuration (mark the **Auto** option to activate the respective dialog section) then please select where the proxy configuration should be taken from:

- **From browser** - the configuration will be read from your default internet browser (*supported browsers being Internet Explorer, Firefox, Mozilla, and Opera*)
- **From script** - the configuration will be read from a downloaded script with the function returning the proxy address
- **Autodetect** - the configuration will be detected automatically directly from the proxy server

## 8.4.2. Dial-up

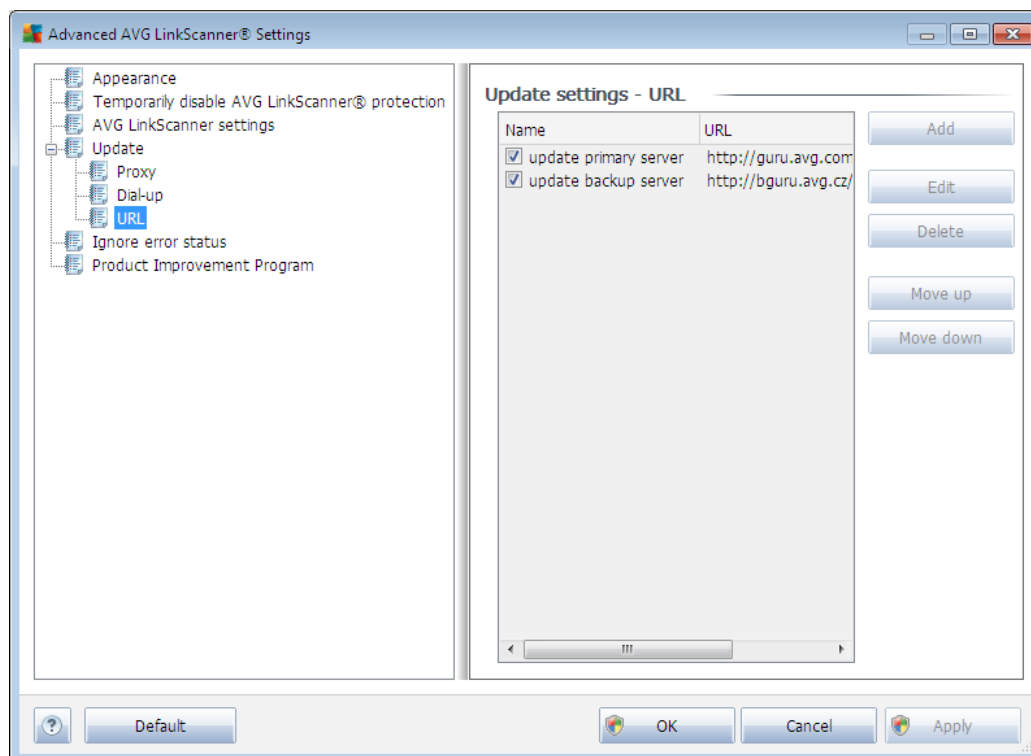


All parameters optionally defined in the **Update settings - Dial-Up connection** dialog refer to the dial-up connection to the Internet. The dialog's fields are inactive until you check the **Use dial-up connections** option that activates the fields.

Specify whether you want to connect to the Internet automatically (**Automatically open this connection**) or you wish to confirm the connection manually every time (**Ask before connection**). For automatic connection you should further select whether the connection should be closed after the update is finished (**Close dial-up connection when finished**).



### 8.4.3. URL



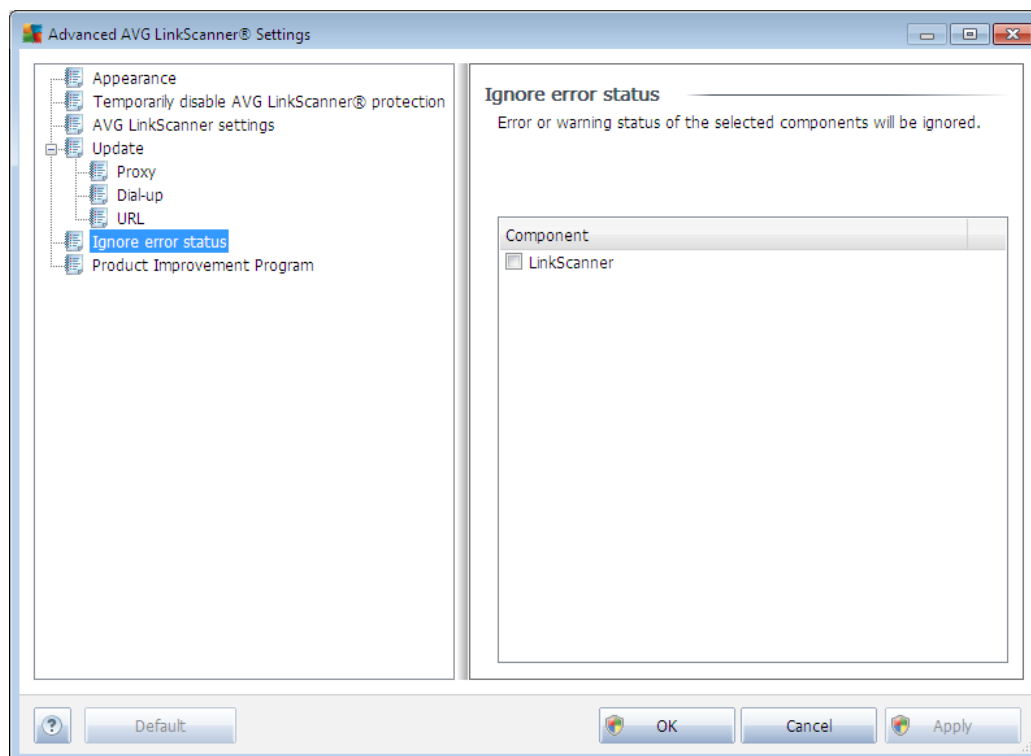
The **URL** dialog offers a list of Internet addresses from which the update files can be downloaded. Unfortunately, this list cannot be modified in **AVG LinkScanner®**.





## 8.5. Ignore Module Status Warnings

In the **Ignore error status** dialog you can tick those components that you do not want to get informed about:



By default, no component is selected in this list. It means that if any component get to an error status, you will be informed about it immediately via:

- [system tray icon](#) - while all parts of **AVG LinkScanner®** are working properly, the icon is displayed in four AVG colors; however, if an error occurs, the icon appears with a warning yellow triangle with a red exclamation mark
- text description of the existing problem in the [Security Status Info](#) section of the **AVG LinkScanner®** main window

There might be a situation that for some reason you need to switch a component off temporarily (*this is not recommended, you should try to keep all components permanently on and in default configuration, but it may be happen*). In that case the system tray icon automatically reports the component's error status. However, in this very case we cannot talk about an actual error since you have deliberately induced it yourself, and you are aware of the potential risk. At the same time, once being displayed in an error state, the icon cannot actually report any possible further error that might appear.

For this situation, within the above dialog you can select components that may be in an error state (or switched off) and you do not wish to get informed about it. The same option of **Ignore module status warnings** is also available for specific components directly from the [components overview in](#)

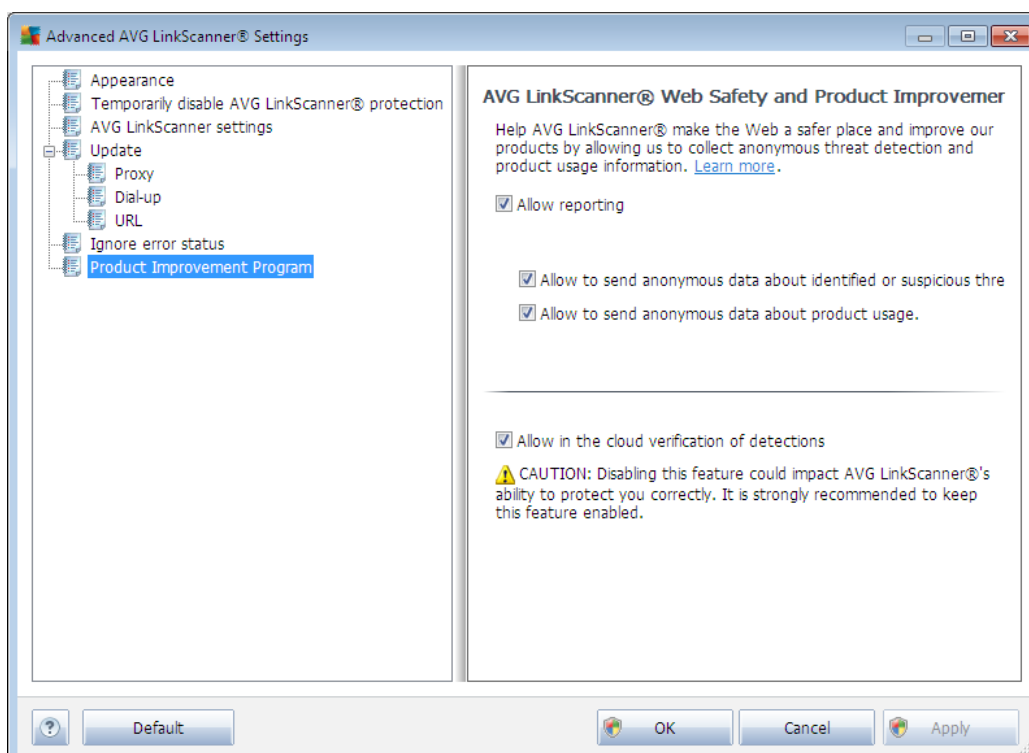


[the AVG LinkScanner® main window.](#)

## 8.6. Product Improvement Program

The **AVG LinkScanner® Web Safety and Product Improvement Program** dialog invites you to participate in AVG product improvement, and to help us increase the overall Internet security level. Mark the **Allow reporting** option (and one or both of the subordinated groups of information) to enable reporting of detected threats to AVG. This helps us to collect up-to-date information on the latest threats from all participants worldwide, and in return we can improve protection for everyone.

**The reporting is taken care of automatically, therefore does not cause you any inconvenience, and no personal data is included in the reports.** Reporting of detected threats is optional, however, we do ask you to keep this feature on, too, as it helps us improve protection for both you and other AVG users.





## 9. Updates

No security software can guarantee true protection from various types of threats unless it is regularly updated! Virus writers are always looking for new flaws that they can exploit in both software and operating systems. New viruses, new malware, new hacking attacks appear daily. For this reason, software vendors are continually issuing updates and security patches, to fix any security holes that are discovered.

***Considering all the newly-emerged computer threats, and the speed they spread, it is absolutely crucial to update your AVG LinkScanner® regularly. Best solution is to stick to the program default settings where the automatic update is configured.***

### Update Process

The update process can be launched immediately as the need arises by the **Update now** [quick link](#). This link is available at all times from the **AVG LinkScanner®** [main dialog](#).

Once you start the update, **AVG LinkScanner®** will first verify whether there are new update files available. If so, **AVG LinkScanner®** starts their downloading and launches the update process itself. During the update process you will get redirected to the **Update** interface where you can view the process progressing in its graphical representation as well as in an overview of relevant statistic parameters (*update file size, received data, download speed, elapsed time, ...*).

**Note:** Before each AVG program update launch, a system restore point is created. In case the update process fails and your operating system crashes you can always restore your operating system in its original configuration from this point. This option is accessible via Windows menu: Start / All Programs / Accessories / System tools / System Restore. Recommended to experienced users only!



## 10. FAQ and Technical Support

Should you have any sales or technical trouble with your **AVG LinkScanner®** application, there are several ways to look for help. Please choose from the following options:

- **Troubleshooting in help file:** The help file included in **AVG LinkScanner®** provides a list of most frequently occurring situations when a user desires to look up professional help to a technical issue. Please select the situation that best describes your problem, and click it to open detailed instructions leading to the problem solution.
- **AVG website Support Center:** Alternatively, you can look up the solution to your problem on AVG website (<%AVG\_WEBSITE%>). In the **Support Center** section you can find a structured overview of thematic groups dealing with both sales and technical issues.
- **Frequently asked questions:** On the AVG website (<%AVG\_WEBSITE%>) you can also find a separate and elaborately structured section of frequently asked questions. This section is accessible via **Support Center / FAQ** menu option. Again, all questions are divided in a well arranged way into sales, technical, and virus categories.
- **About viruses & threats:** A specific chapter of the AVG website (<%AVG\_WEBSITE%>) is dedicated to virus issues. In the menu, select **Support Center / About viruses & threats** to enter a page providing structured overview of information related to online threats. You can also find instructions on removing viruses, spyware, and advice on how to stay protected.
- **Discussion forum:** You can also use the AVG Free users discussion forum at <http://forums.avg.com>.

**Unfortunately, using AVG LinkScanner® you are not entitled to technical support provided to full versions of AVG products. You may want to consider buying the full version of AVG, then please visit the AVG website (<%AVG\_WEBSITE%>) for information on AVG 2012 paid products purchase options.**