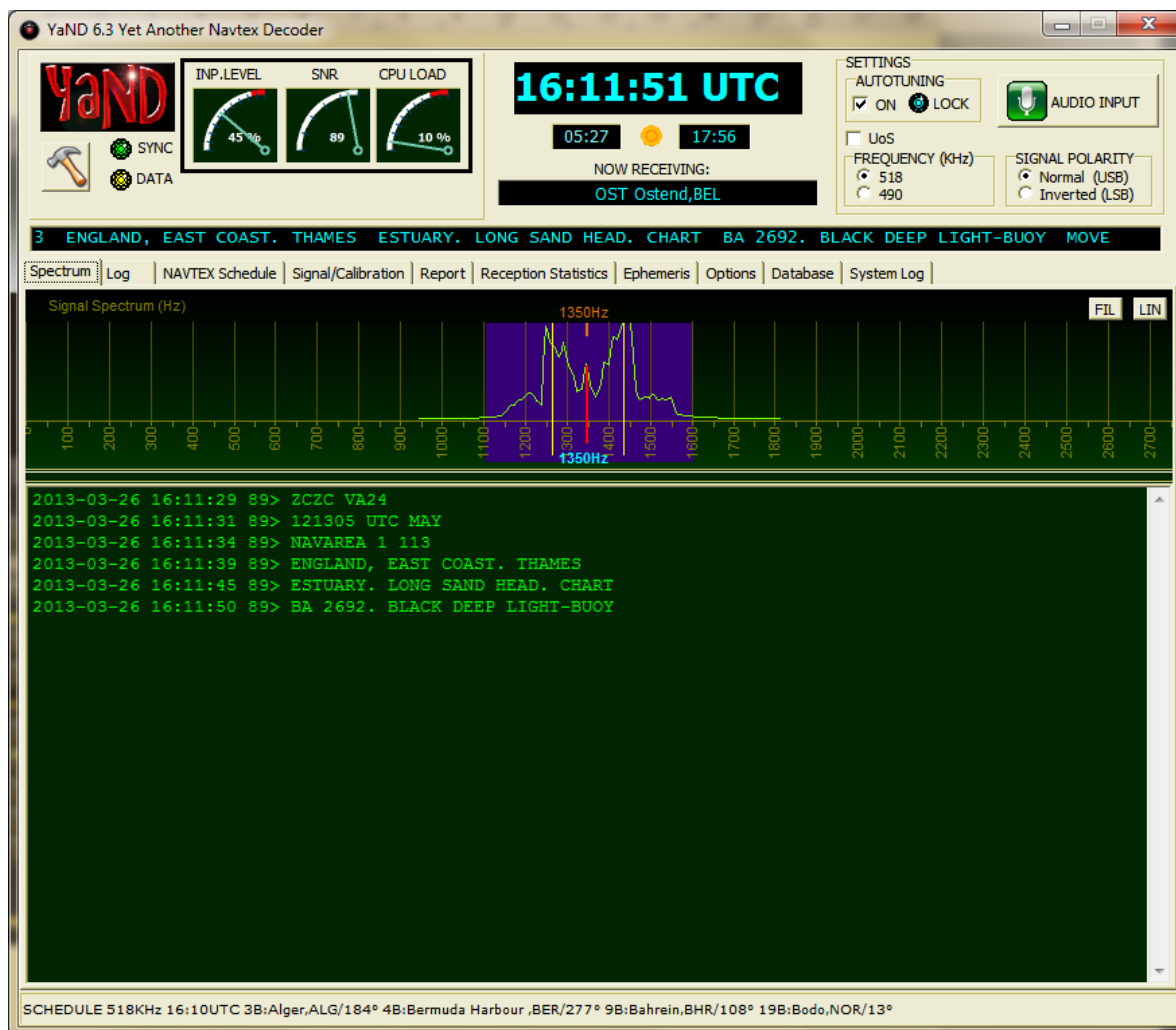




YaND 6.x

USER MANUAL



Manual v1.2 April 2013

Table of Contents

Introduction.....	3
Installation.....	3
First use and settings.....	4
Optimal settings for Perseus users	4
Audio Input Selection	4
WIN2K/WINXP/VISTA/WIN7/WIN8 audio issues.....	5
Settings Panel	6
Main Panel.....	6
Spectrum.....	7
Log	7
Raw Text Search.....	8
Navtex Schedule.....	8
SNR History.....	9
A note on SNRs.....	9
Scope.....	10
Calibration.....	11
Reception Report.....	12
Reception Stats.....	13
DX-Atlas interface.....	14
Ephemeris.....	15
Options & Preferences.....	16
Personal & Equipment Info	17
Station/keyword database Import/Export.....	17
System Log.....	18
Station Identification: how does it work?.....	18
Using the Keyword List Editor.....	21
Using the Keyword List Editor.....	21
YaND Word Autocorrection.....	22
Running multiple instances of YaND	23
The Making of.....	24
Delphi 7	24

Introduction

Yand (Yet Another Navtex Decoder) is, as you guessed... a Navtex decoder. Navtex stands for NAVigational TELeX, and is part of the worldwide Global Maritime Distress Safety System or GMDSS.

See: http://en.wikipedia.org/wiki/Global_Maritime_Distress_Safety_System for an introductory explanation.

Navtex messages are periodically transmitted on fixed frequencies by coastal stations all over the world. Each station is assigned a fixed 10 minute period every 4 hours, but off-schedule urgent messages can be transmitted at any time.

Worldwide frequencies used by Navtex are:

518 KHz: transmissions in English

490 KHz: transmissions in the local language

424 KHz: Only used by Japanese stations

What do you need for Navtex reception?

- An SSB (Single Side Band) communications receiver capable of receiving on 518 and 490 KHz
- Any antenna will do for receiving of local stations, but for DX-reception, a decent outside antenna will be needed. (A mini-whip @ 4..6 m. is great for Navtex!)
- An audio cable connecting your receiver output to the soundcard input of your PC.

Connecting the receiver to the PC

Since YaND captures the audiosignal in mono mode, almost every audio cable should be suitable to connect the receiver output to your soundcard. It is advisable – but this has nothing to do with the working of YaND - to provide a 1:1 isolation transformer in between receiver and soundcard to avoid ground loops. (the line transformer of an old analog modem is ideal!)

Installation

This is a very straightforward process that will take only a few seconds. Simply doubleclick Yandsetup6_X.exe and follow the instructions. By default, Yand will be installed in ...\\Program Files(x86)\\YAND\\, and a shortcut will be placed on your desktop.

Note to Vista/Win7/Win8 users

- If you are not using Yand as an administrator, Yand will not work correctly, it cannot write to its database, it cannot update its ini-file, etc... thanks to Microsoft's absurd concept of "Virtual Store".
- The solution is to install Yand in whatever directory you prefer , but NOT under C : \\ Program Files (x86). The installer will give you the option to change the install path. Change the path to C:\\YAND , C:\\MYAPPS\\YAND or whatever you prefer.

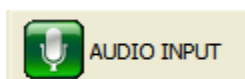
First use and settings

Switch on your receiver, wait until a Navtex signal is being received, select USB and tune to +/- 516.5 KHz. The position of the spectrum peaks is not important, just avoid to go below 400..500 Hz or so.

Optimal settings for Perseus users

Set mode to RTTY, BW to 0.8 KHz, and adjust IF bandwidth to 400Hz in the secondary spectrum window. Set AGC to Fast.

Audio Input Selection

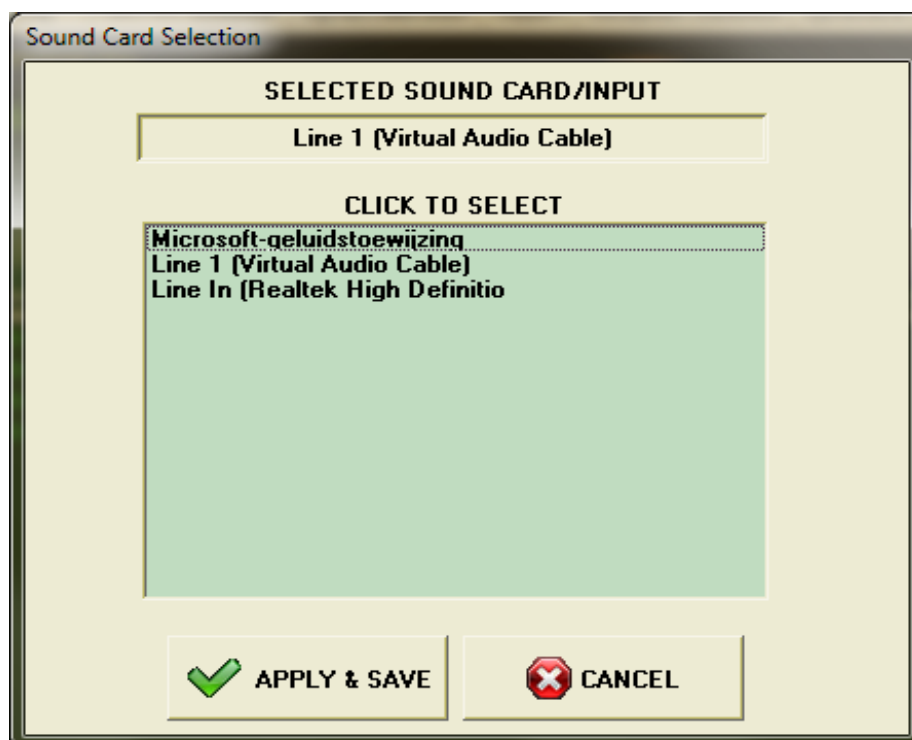


Press to select the audio input.



Line/Microphone inputs will be mostly used. VAC (Virtual Audio Connector) inputs will also be selectable. Please note that high input levels will cause clipping of the audio signal. Check the Input Level Gauge. Clipping is a Bad Thing and will severely degrade YaND's decoding capabilities.

When the Apply/Save button was pressed, Yand will remember this setting for future sessions.



WIN2K/WINXP/VISTA/WIN7/WIN8 audio issues

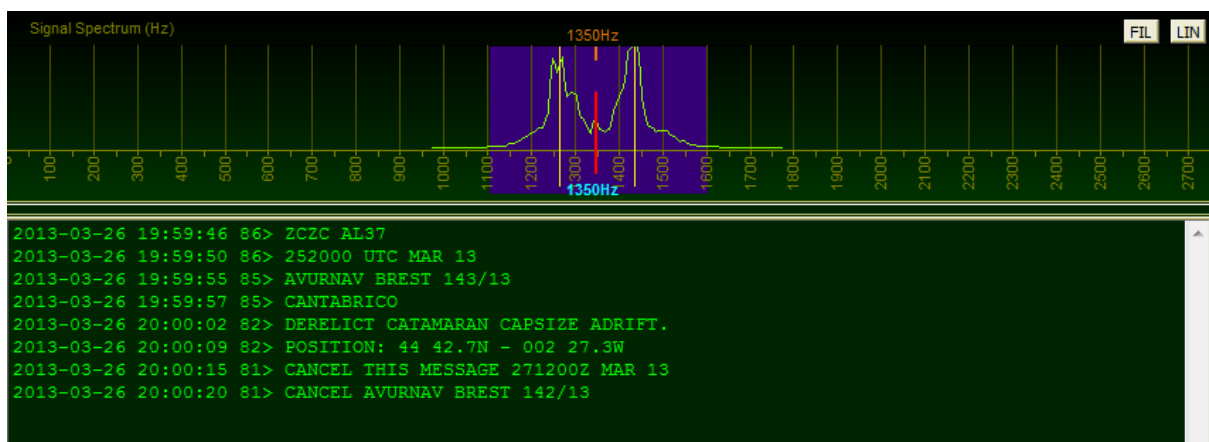
-On Win2K and XP, YaND will enumerate all physically present input sources from all installed sound cards.

-On Vista, Win7 and Win8, Yand will only enumerate input sources which are physically present AND connected. (i.e. a connector must be plugged in)

-Yand will re-enumerate all available inputs each time the Audio Input button is pressed.

On Vista/W7/W8, any new connections made while the selection window is open, will not be shown until you close and re-open the window.

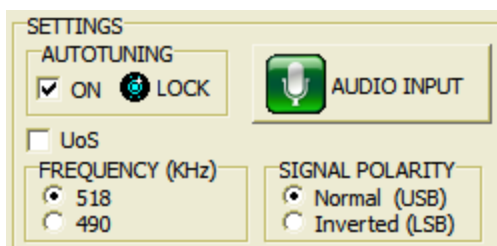
Audio Spectrum /Current message display



Yand calculates the signal spectrum ca. 10 times/sec via a Fourier transform, and displays this in the upper window. By default, the spectrum will be heavily filtered over time in order to accurately track the signal peaks. Keep this in mind when tuning the receiver: the peaks will only slowly move across the spectrum. The raw unfiltered (and noisy) spectrum can be displayed by clicking the FIL/RAW toggle button. (for its autotracking function, Yand will internally always use the filtered version of the spectrum to assure a stable reading)

The vertical axis of the spectrum can be shown on a linear or logarithmic scale by clicking the LIN/LOG toggle button.

Settings Panel



518 KHz will be set by default as this is the busiest Navtex Frequency. This frequency setting will only affect the Navtex schedule (see tab Navtex Schedule) and the Station Identification feature of YaND. Note that Yand cannot know the frequency your receiver is tuned to!

Signal Polarity: select Normal when your receiver is set to USB, or Inverted otherwise.
If this setting is wrong, *Yand will not work at all.*

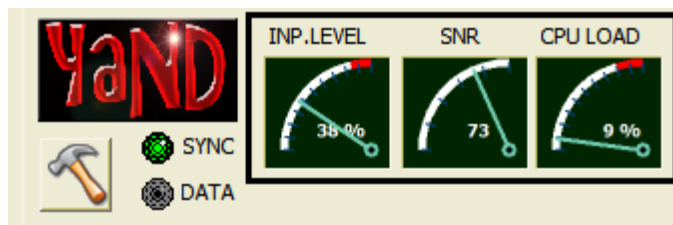
UoS: Unshift on Space. A RTTY-era leftover. If checked, letters-shift will be forced each time a space character was received. It may enhance readability of weak signals but don't expect miracles.

Autotuning: when checked AutoTuning, YaND will automatically determine the optimal tuning and will also track eventual receiver drift within the -250..+250 Hz tuning region indicated by the **blue** region in the spectrum window.

When strong interfering signal peaks are present in the blue tuning region, autotuning *may* run into troubles and jump on the wrong frequency. This is often the case in Europe, where in winter time relatively strong beacon signals are present exactly on 518.000 carrier (ARD, Arad, Romania and JBR, Yasbereny,HNG) In this situation it is advisable to switch off autotuning. You can now manually adjust the desired setting. The last used frequency is remembered by YaND, irrespective of the autotuning setting.

Main Panel

Led SYNC: when constantly lit green, indicates that YaND has acquired full sync on the data stream.



When flickering green, it indicates that a sync signal is being received. This special sync signal is transmitted for ca. 30 seconds before the actual data transmission starts. Most stations also intersperse data periodically with sync characters.

- When yellow, indicates that Yand is in pre-sync mode and thinks it has spotted a signal (this may (will) occur on random noise also)
- When red, indicates that Yand is out of sync.

Led DATA: data are being received.

CPU-load gauge: Indicates the CPU-load caused by YaND. (not the *total* CPU-load)

SNR gauge: Indicates an estimated signal to noise ratio. Values will only be meaningful and coherent for receivers bandwidths of 400..1000Hz. Standard voice channel SSB settings (2.2 KHz) will typically give too low values.

Hammer button: forces a resync of the decoder.

The various tab pages

A description of Yand's many tab pages follows.

Spectrum

Under the spectrum window, the current message being received is shown

```
14:02:04> ZCZC MA15
14:02:08> 240434 UTC DEC =
14:02:09> WZ1505
14:02:18> DOVER STRAIT TSS. SANDETTIE DEEP WATER ROUTE. MDW LIGHTBUOY
14:02:25> 51-19.1N 001-59.3E UNLIT. +
14:02:26> NNNN
```

Incoming decoded characters are assembled into lines internally but are also continuously sent to the ticker line on the top panel. When a line is complete, it is added to the message window. Note that some stations send their text totally unformatted (no –or almost no - carriage-return or linefeed characters). Yand will force the text to be added to the message window if more then 200 characters were accumulated.

When a NNNN line is received, the message is entered into the message database and the message window is cleared. Some stations do not send a CR/LF sequence after NNNN. The message will remain in the message windows until the ZCZC sequence of the next message is received.

Log

DATABASE FILTERING

FREQUENCY

☒ BOTH

☐ 518 KHz

☐ 490 KHz

NAVAREA

*

ID-LETTER

*

FILTER ON

Raw text search in message BODY

DATABASE NAVIGATION

RECORDS: 64997

UTCRECEIVED	FREQ	SQ	B1	B2	MSGNUMBER	NAVAREA	STATION	DIST (Km)
2013-03-29 07:01:17	518	72	S	A	36	1	DDH47 Pinneberg,DEU	460
2013-03-29 07:02:58	518	73	S	A	33	1	DDH47 Pinneberg,DEU	460
2013-03-29 07:03:34	518	71	S	A	21	1	DDH47 Pinneberg,DEU	460
2013-03-29 07:10:36	518	90	T	E	57	1	OST Ostend,BEL	109
2013-03-29 07:11:26	518	91	T	A	86	1	OST Ostend,BEL	109
2013-03-29 07:12:09	518	90	T	A	85	1	OST Ostend,BEL	109
2013-03-29 07:12:52	518	90	T	A	83	1	OST Ostend,BEL	109
2013-03-29 15:30:39	518	89	V	A	54	1	OST Ostend,BEL	109
2013-03-29 15:31:48	518	90	V	A	52	1	OST Ostend,BEL	109

2013-03-29 07:11:26 91> ZCZC TA86

2013-03-29 07:11:29 91> 281333 UTC MAR

2013-03-29 07:11:35 91> OOSTENDERADIO - NX 157/13

2013-03-29 07:11:40 91> COASTAL ROUTE/OOSTENDE-DE PANNE.

2013-03-29 07:11:45 91> SPECIAL PURPOSE BUOY HD10,

2013-03-29 07:11:53 91> Y. FL 5S, 51-08.21N 002-36.93E,

2013-03-29 07:11:57 91> TEMPORARILY ESTABLISHED.

2013-03-29 07:12:02 91> AUTOCANCEL 111418 UTC APR.

2013-03-29 07:12:03 91> NNNN

Clicking on any message in the message summary list will show the message body in the lower window. When scrolling through the message list, the lower window will automatically synchronize.

The message database will grow steadily when messages are received. To facilitate finding a given message or group of messages, extensive filtering options and navigation buttons are available. Filtering can be done on frequency, id-letter, navarea in any combination. Note that the ID-letter field must contain a 'A'..'Z' character OR the wildcard '*', *it should not be blank, or no records will be shown* .

Raw Text Search

- This is implemented as a filter. Example: if you enter 'RESCUE' in the input box and click on the blue button at the right, only messages containing this string will be shown.
- You cannot combine the text search with the other filter options to the left, and vice versa.

When filtering is active, the yellow led will blink. This is to remind the user that not all records are shown. (when a filter on ID-letter 'A' is active, and a message from a 'F'-station is received, this message will not be shown although it is in the database, but it is filtered out)

If Yand failed to identify the station (or did so but incorrectly which should be rare), the ID-letter and the navarea can be forced in the following way:

-Double-click on the B1 field of the record (or click once and press Enter)


-Enter the B1 character in CAPITALS.

-Leave the field with the up- or down-arrow key.

Repeat the above for the NAVAREA field. Yand should now have filled in the station name and country code. If the stations remains UNID, you have specified an unassigned ID-letter for the specified navarea.

Navtex Schedule

Navarea Schedule

 On Air Now

Navarea Preferences: check/uncheck to show/hide area's of interest

1

2

3

4

5

6

7

8

9

11

12

13

15

16

17

☒

☒

☒

☒

☐

☐

☐

☐

☒

☐

☐

☐

☐

☐

☒

APPLY

TSLOT	FREQ	NAVAREA 1	NAVAREA 2	NAVAREA 3	NAVAREA 4	NAVAREA 9	NAVAREA 17
10:20	518	10 Portpatrick,SCT		30 Malta,MLT	40 St.Johns,CAN		
10:30	518	1P Den Helder,HOL		3C Odessa,UKR	4P Thunder Bay, ON,CAN	9P Karachi ,PAK	
10:40	518	1Q Malin Head,IRL		3Q Split,HRV	4Q Sydney,CAN		
10:50	518	1R Saudanes,ISL	2R Monsanto,POR	3R Rona,ITA			
11:00	518	1S Pinneberg,DEU		3A Novorossiysk,RUS	4G New Orleans,USA		
11:00					4H Nuuk,GRL		
11:10	518	1T Ostend,BEL		3T Cagliari,SAR	4T Iqaluit,CAN		
11:20	518	1U Tallinn,EST		3U Trieste,ITA	4U Fundy, NB,CAN		
11:30	518			3V Augusta,SCY		9V Quseir,EGY	17V Vardo,NOR
11:40	518	1W Valentia,IRL		3W Astrakhan,RUS			

After a fresh installation, this panel will show the worldwide Navtex schedule for all navarea's. This is a rather massive table with ugly horizontal scroll bars. You can check/uncheck the navareas of interest to reduce the amount of information. Press the Apply button and Yand will remember your preferences. Above shown are the navareas receivable in Europe.

Clicking the “On Air Now” button will take you to the current timeslot. Note that this is always in UTC, regardless of your system’s timezone setting or Yand’s time settings. When the 518/490 frequency setting is changed from Yand’s main screen, the schedule will be automatically updated.

YaND's station database was extracted from the most authoritative source on :

<<http://www.ndblist.info/datamodes/worldNAVTEXdatabase.pdf>>

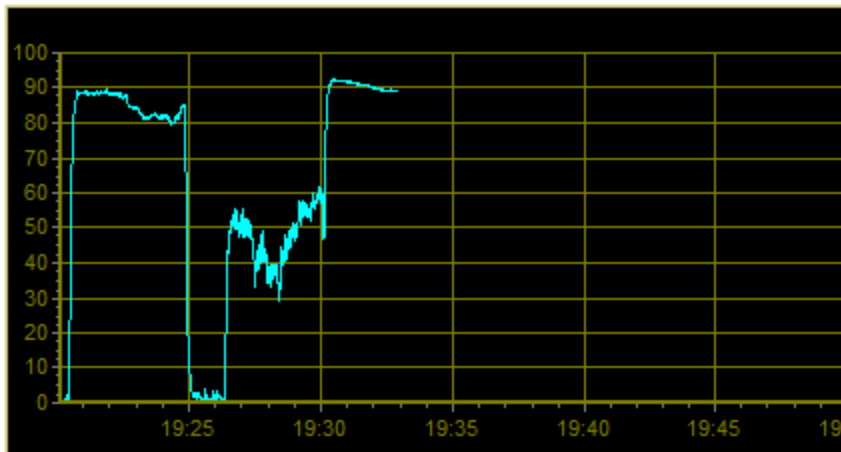
, maintained by Alan Gale G4TMV. Thanks to Alan!

Signal/Calibration

Two subtabs are present here: Scope and SNR History/Calibration

SNR History

The SNR values over the last hour are shown here.



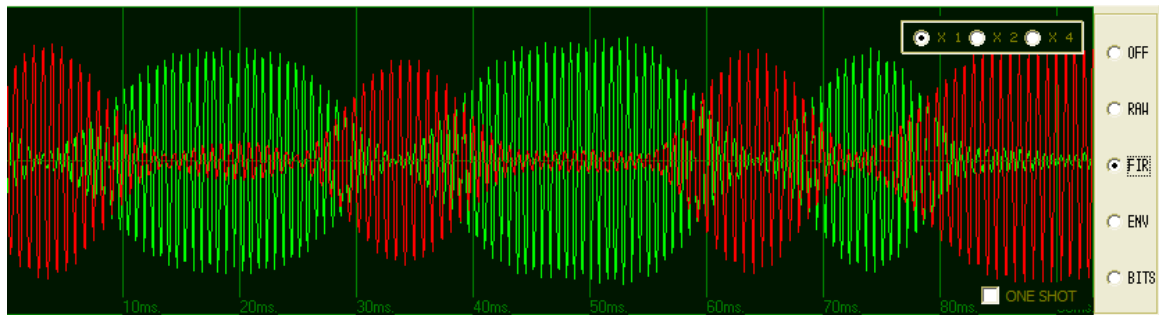
A note on SNRs

Yand is not showing the true SNR value. Calculating the SNR without some knowledge of the receiver characteristics is a difficult exercise. Instead, Yand calculates the general “usability” of the signal. In a nutshell: a strong signal is an almost perfect sinusoid. A weak noisy signal is the sum of the actual Navtex signal and many random other frequencies. For a pure sine wave, the ratio of its peak-to-peak value to its standard deviation is known: $2\sqrt{2} = 2.83$.

For a noisy random signal this ratio is ~ 7 . The rest is scaling, but this scaling is dependant on the receivers's IF bandwidth and is optimized for bandwidths in the range of 400..800Hz.

Wider bandwidths will yield values that are typically too low. Future versions of Yand may have an option to indicate the actual receiver bandwidth.

Scope



The upper window is a simple oscilloscope that can show various signals internal to Yand. Checking/unchecking the radio buttons at the right of the window starts/stops the oscilloscope.

RAW: the raw audio source.

FIR : the output of the mark/space FIR filters in Yand's software modem

ENV: the output of the envelope filter after the FIR-filters

BIT: the recovered bit stream after the bit slicer PLL. (Phase Locked Loop)

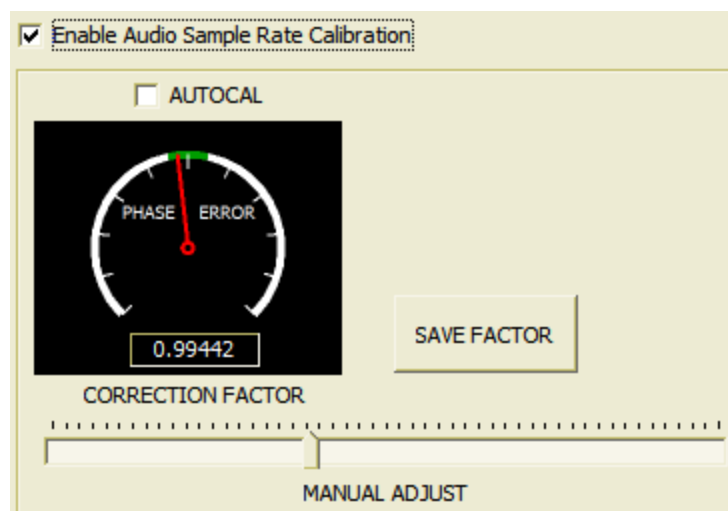
The time base of the oscilloscope can be changed by selecting the X1/X2/X4 radio buttons.

Note that the oscilloscope's update frequency is 10 Hz and as such can cause quite some CPU-load on old systems! The oscilloscope can be put in one-shot mode by checking the box at the lower bottom. Repeatedly clicking on the desired signal source will refresh the trace.

The oscilloscope Y-axis scaling is automatic, i.e. signal amplitudes will always fill the screen to +/- 80 % regardless of their actual amplitude. This works fine, but if nothing is connected to the selected input, the always present input noise will be shown, resulting in possibly "funny" signal artefacts.

The lower window shows the SNR history of the last 60 minutes. Strange propagation variations can sometimes be observed.

Calibration



To decode synchronous signals buried deep in the noise, a Navtex decoder must a) recover the bit clock as accurately as possible and b) sample each bit in the middle of the bit as accurately as possible. As the Windows OS – as seen from an application - has no adequate support for measuring time intervals with any accuracy (we are dealing with bit times of 10 *milliseconds* for Navtex!), the sound card sampling rate is used as a reference by Yand (and most other decoders). The sound card is running by

itself and uses an internal accurate clock which is not affected by system activity or CPU-load.

This approach assumes that the sound card's sample rate is absolutely correct. This is the case within a few tens of a percent for most cards in desktop PC's, which is accurate enough. Laptops seem to be an exemption to the rule. I have seen errors of more then 3% on certain types from well known brands. Although errors of this magnitude are disastrous for bit timing, it was also observed that this error was stable over time, so a "Calibrate once and Forget" functionality was needed.

The Calibration facility provided by Yand is simple to use:

- Wait until a signal from a local station is received, *don't do this with noisy DX-signals*.
- Check that Yand's tuning is locked onto the signal and data are being received (possibly with errors if you have a bad sound card)
- Go to the Calibration tab and enable the calibration,
- If the needle is not stable and in the green centre area, use the slider to bring it there, press Save Factor. (Needle is left of center => move slider to the right and vice versa).

If the needle is wildly swinging, this indicates you are *way* off. Slowly try again.

Alternatively, try the Autocal function. Be patient, it may take 30..45 seconds for the needle to become stable. Press Save Factor.

Only press Save Factor when you are confident. YaND will restore the factor in use prior to the calibration attempt if Save Factor was NOT pressed.

Reception Report

SAVE REPORT AS... Personal Info
☐ Do not include
☒ Include as header
☐ Include as footer NEW REPORT Report Format
☒ NavtexDX ☐ DX-A FIGURES/LETTERS SHIFT REVERSER REV

20130329 0702 518 \$01S DDH47 Pinneberg,DEU 460
20130329 0711 518 \$01T OST Ostend,BEL 109
20130329 1644 518 \$01E GNI Niton,ENG 407
20130329 1700 518 \$01G GCC Cullercoats,ENG 587

20130329 0702 518 \$01S DDH47 Pinneberg,DEU 460
2013-03-29 07:02:58 73> ZCZC SA33
2013-03-29 07:03:00 73> NCC-HAMBURG
2013-03-29 07:03:03 73> 250930 UTC MAR 13
2013-03-29 07:03:07 73> NAV. WARN. NO. 160
2013-03-29 07:03:12 73> TSS GERMAN BIGHT WESTERN APPROACH
2013-03-29 07:03:22 73> `GW/EMS` LIGHT-VESSEL 54-10N 006-21E RACON INOPERATIVE.
2013-03-29 07:03:23 73> NNNN

20130329 0711 518 \$01T OST Ostend,BEL 109
2013-03-29 07:11:26 91> ZCZC TA86

This is a tool to assemble and export reception reports to plain text files.

Two formats are available: NavtexDX and DX-A (DX-Antwerp is my local DX-club here in Antwerp, Belgium and uses a different report format) . NavtexDX is the default format.

To add records to the report, go to the Messages tab. There, Shift+LeftClick in the UTCRECEIVED column of the records you wish to add. When finished, go back to the Report tab.

The upper window will contain a summary line for each previously selected record.

The lower window will contain the summary line together with raw message text.

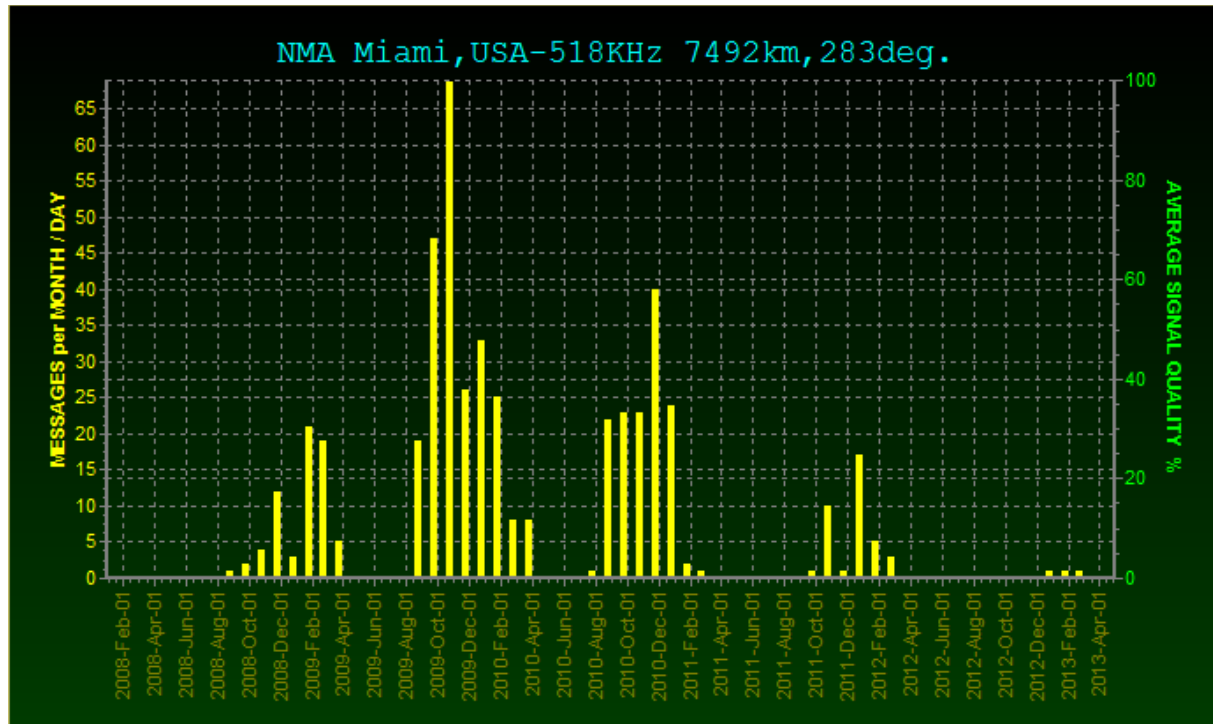
Both windows are *freely* editable: you can add/change/delete text as you like.

Click Save to store the report. Yand will propose a filename in unique timestamp format, (e.g. NDX20130330 204022.TXT) but you're free to change this. Reports will be saved in the ../YAND/LOG directory. Note that you cannot change this directory. Prepending the filename with a drive letter or a directory path will not work.

Garbled text with wrong letters/figures shift can be corrected by copying (select with the mouse, press Ctrl-c) and pasting (Ctrl-v) the erroneous text into the Shift reverser tool text box and pressing REV. "-`54-({-,J4-\$89" will automagically become "ASTRAKHAN RADIO"

Reception Stats

See below for an example of the plot for Miami on 518 KHz for the period January 1 2008 ... April 2013, as received here at my QTH in Belgium. (and notice the striking progression of the solar cycle into bad territory!)

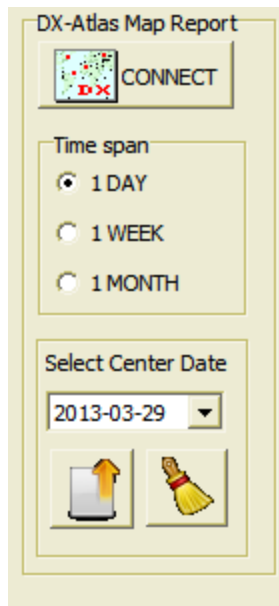


Simply choose the desired time period, frequency, and navarea (choosing the navarea will update the available stations in that area), choose a station and press the PLOT button. You can change each of the selectors at will, but you must press the PLOT button after each change to update the plot.

The plot can be shown averaged by day or by month, and you have the option to plot average signal quality, average message count or both. Note that selecting “by day” for a long time period will produce rather spiky plots, and that selecting “by month” for short time periods will produce only a few (wide) bars.

It is debatable whether the *total* number of messages received in a day or a month from a given station is a reliable indicator for DX-conditions. There are many pro’s and cons. Severe weather conditions at sea will cause more gale/storm warnings to be broadcasted. Some stations will produce one message for each subject, others will combine many subjects into one big message. The size of the sea area a Navtex station must service can vary widely. Is receiving 5 messages from a distant station “better DX” than receiving only one? The least one can say is that the DX-opening must have been longer to receive 5 messages. But the true cause for receiving those 5 messages might have been that a local flame thrower has not used its timeslot. And so on...

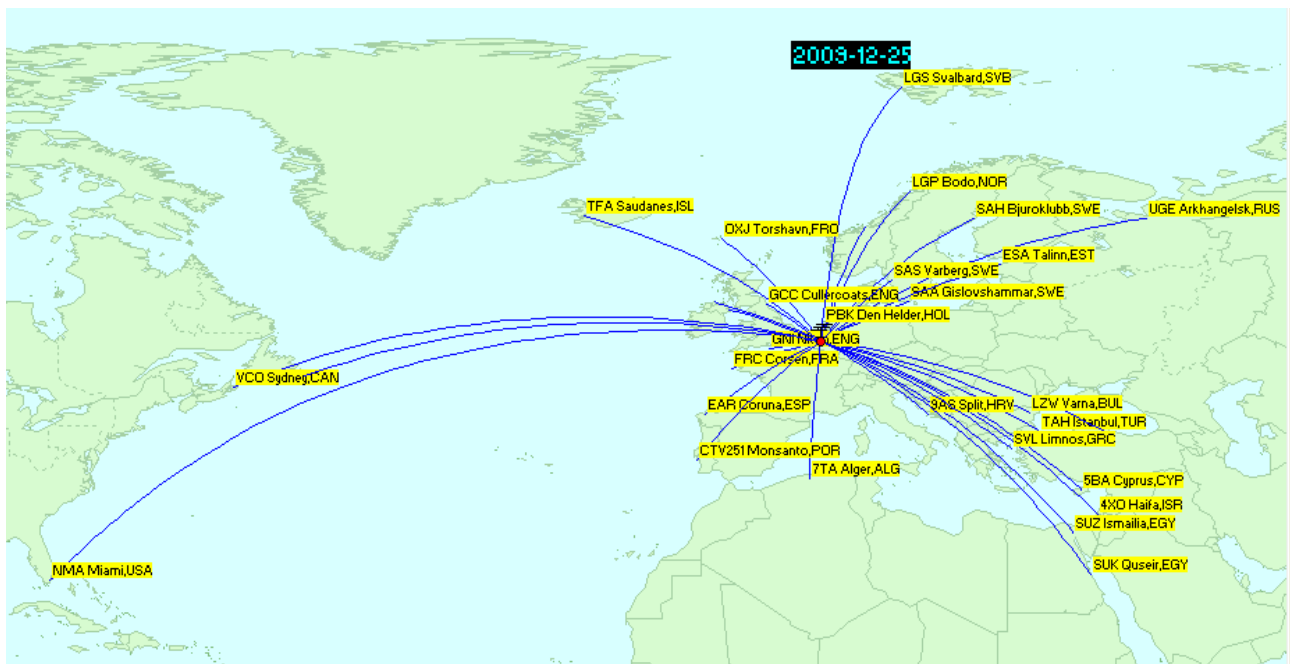
DX-Atlas interface



At the right of the window is a interface to DX-Atlas. This allows you to produce a chart of the stations received on a given day. If you have DX-Atlas installed on your system, click on the Connect button. DX-Atlas will come up in front and in the way of Yand, Alt-Tab to bring Yand to the foreground again. Select a date and a time span, and click on the left arrow button . DX-Atlas will come to the foreground and show the stations received on that day. The lower panel as shown here will only become visible after a succesfull connect.

Each time you select a date, DX-Atlas will be updated. Clicking the right "brush" button will clear DX-Atlas' screen.

If you have a non-registered copy of DX-atlas, the above won't work because DX-atlas will stop on its nagging screen and the connect will fail. In that case you must start up DX-atlas manually and *before* you click on the Connect button.

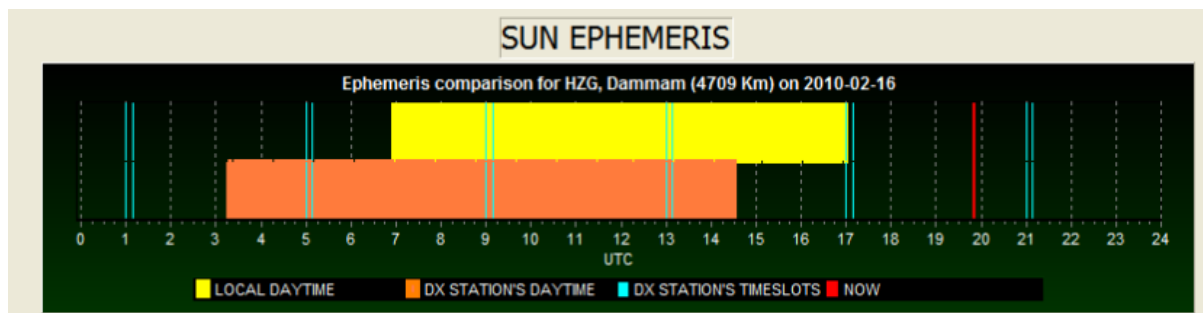


Even with a registered version of DX-atlas, the interface to it is still a bit flaky:

- If you close DX-atlas manually, a subsequent reconnect from within Yand will fail. You will need to stop/restart Yand.
- If you close Yand, DX-atlas will also quit.

Ephemeris

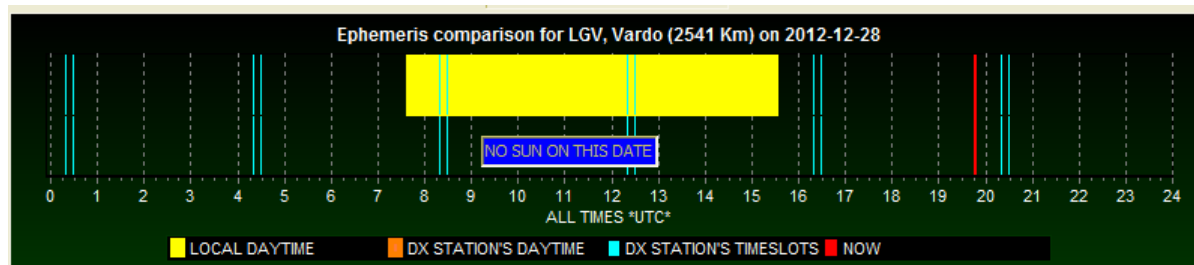
On MW, long haul DX is only possible when both receiver and transmitter are in darkness, or one of them is close to sunrise/sunset time and the other is still in darkness. This is visualized graphically on Yand's Sun Ephemeris tab to reveal the optimal time(s) of potential reception of a given Navtex station on a given date.



Operation is very straightforward: simply double-click on the station of interest.

Given favourable propagation conditions, reception of the selected station is possible in the non-coloured part of the graphic, or close to the sunrise/sunset points of receiver/transmitter.

Many stations transmit on 518 *and* 490 KHz so make sure to select the right frequency (ephemeris data will be the same, but not *the timeslots!*)



In winter, stations located far North may be in darkness all day.

Options & Preferences

Options & Preferences

☐ Confirmation popup on DB record deletion

☐ SNR on log line

51.122939 Your latitude (-90..0..90 in DECIMAL degrees)

4.467524 Your longitude (-180 West..0..180 East in DECIMAL degrees)

SELECTIVE LOGGING

UNCHECK to exclude a station from logging

<input checked="" type="checkbox"/> 490 1A EJM Malin Head, IRL	<input checked="" type="checkbox"/> 518 1J SAA Gislovshamar, SWE
<input checked="" type="checkbox"/> 490 1B OST Ostend, BEL	<input checked="" type="checkbox"/> 490 1K TFA Grindavik, ISL
<input checked="" type="checkbox"/> 490 1C GPK Portpatrick, UK	<input checked="" type="checkbox"/> 518 1K GNI Niton, ENG
<input checked="" type="checkbox"/> 518 1D OXJ Torshavn, FRO	<input checked="" type="checkbox"/> 490 1L DDH47 Pinneberg, GER
<input checked="" type="checkbox"/> 518 1E GNI Niton, ENG	<input checked="" type="checkbox"/> 518 1L LGQ Rogaland, NOR
<input checked="" type="checkbox"/> 490 1E TFA Saudanes, ISL	<input checked="" type="checkbox"/> 518 1M Lxx Jeloya, NOR
<input checked="" type="checkbox"/> 518 1G GCC Cullercoats, ENG	<input checked="" type="checkbox"/> 518 1N LFO Orlandet, NOR
<input checked="" type="checkbox"/> 518 1H SAH Bjuroklubb, SWE	<input checked="" type="checkbox"/> 518 1O GPK Portpatrick, SCT
<input checked="" type="checkbox"/> 490 1I GNI Niton, UK	<input checked="" type="checkbox"/> 518 1P PBK Den Helder, HOL
<input checked="" type="checkbox"/> 518 1I SAS Varberg, SWE	<input checked="" type="checkbox"/> 518 1Q EJM Malin Head, IRL

☒ Do not log message fragments containing less than 30 characters

Personal & Equipment Info

Report from : Dirk Claessens

QTH : South of Antwerp, Belgium

Locators : 51.07.23N 04.28.03E [JO21je]

Receiver : Perseus SDR, Lowe HF225

Antenna : MW: paOrdt Mini-Whip @ 5m

Navtex-Decoder : YaND 6.3

CONFIRM & SAVE ALL OPTIONS

- Confirmation popup on DB record deletion

By default, Yand will ask for a confirmation each time when you delete a record. If you don't like this, uncheck this option.

- Latitude/Longitude:

enter your coordinates here in *decimal* degrees. Note that southern latitudes and longitudes West of Greenwich must be *negative* numbers.

- Do not log message fragments etc...:

enter an appropriate value if you want to get rid of short (mostly unusable) message fragments messing up the message database. 35..50 characters is a good starting value.

Selective Logging

In this table you can indicate which stations you wish to include or exclude from logging. Most users will want to exclude the local "flame throwers" from the logs.

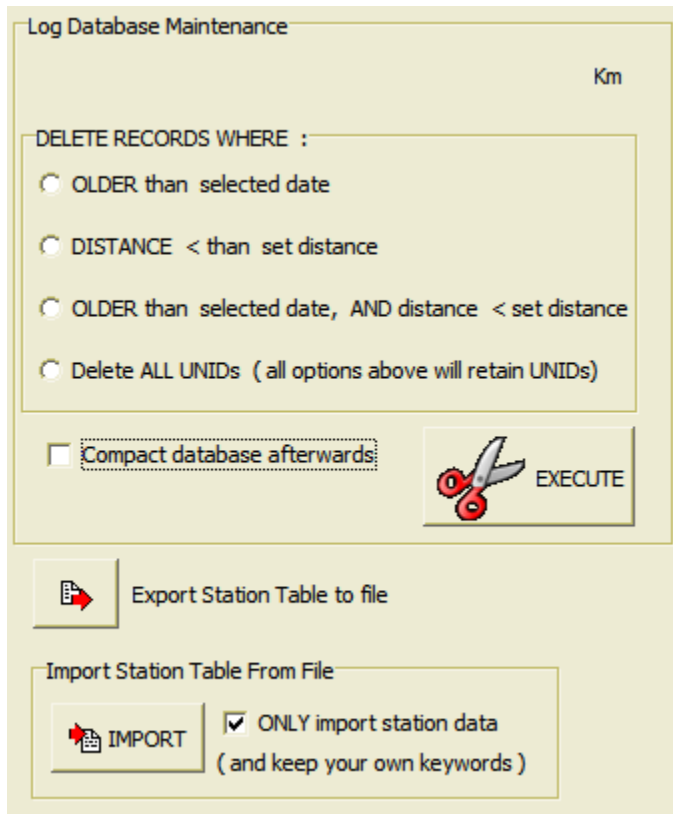
Personal & Equipment Info

You can optionally enter your personal and equipment info in here. This info will be included in all reception reports (if you have checked the applicable option in the report tab.)

Press Confirm & Save to store your options

options will only take effect after you press this button.

Database Maintenance



If the database size (YAND_DB.ABS) becomes unwieldy large, you can clean it up with the described options. Most DX-ers will only keep distant and/or exotic stations in their logs.

Note that the database engine when it deletes records will not physically delete the record space, but will instead re-use this space for new records. In other words, the file size will never shrink.

To force physical deletion of the selected records, check the Compact option before clicking the Execute button.

Station/keyword database Import/Export

The keyword database is a constant work in progress and it will take many months before this will be completed for all navareas. Updating the keyword database works via a intermediate file YAND_STATIONS.TXT in the ../Yand/ directory. Updates will be distributed on NAVTEXDX@yahoo.com. Putting this file in the ../Yand directory and clicking the Import button will update the internal database. Clicking Export will do the reverse and store the file.

System Log

This shows all kinds of boring information for debugging and problem solving purposes. It may grow to 10 000 lines (if you keep Yand running for a loong time) and will then be cleared and started again.

Station Identification: how does it work?

The general idea is rather simple. With few exceptions, every Navtex message will contain some geographical hints revealing the general area where the message originated from. Also, many Navtex stations will transmit a globally unique station identifier. This can be the full name of the station, its ITU-call or both. A few examples will further clarify the identification process:

```
01:27:25> ZCZC IA52
01:27:28> 261349 UTC AUG 09
01:27:30> IZMIR TURK RADIO
01:27:34> NAVTEX NW NR: 439/09
01:27:34>
01:27:38> STRAIT OF CANAKKALE
01:27:44> KEPEZ LIGHT BUOY`S WITH (K) CODE RACON
01:27:51> 40 05 40 N 026 21 40 E INOPERATIVE
01:27:55> WIDE BERTH ADVISED.
01:27:55>
01:27:55>
01:27:56> NNNN
```

Yand will first attempt to find a globally unique identifier. With the above message this is easy: "IZMIR TURK RADIO". But even if this string would not have been present in the message, Yand will attempt to identify it by using the combination of the 'I' identifier and one or more geographical hints. For the above message, this would be:
Identifier 'I' + 'TURK' or 'CANAKKALE' => this must be \$03I, Izmir.

Here another 'I' – message is shown, but now originating from SAS Varberg,SWE:

```
17:24:19> ZCZC IB09
17:24:21> 241230 UTC NOV
17:24:26> BALTIC SEA GALE WARNING 509
17:24:26>
17:24:29> NEAR GALE WARNING
17:24:29>
17:24:37> SKAGERRAK: ON WEDNESDAY S 14-17 M/S.
17:24:43> KATTEGAT: WEDNESDAY AFTERNOON S 15 M/S.
17:24:55> SOUTHERN BALTIC: W, IN SOME AREAS UP TO 14 M/S, OVERNIGHT DECR.
17:25:07> SOUTHEASTERN BALTIC: W, IN SOUTHERN PARTS UP TO 14 M/S, OVERNIGHT
DECR.
17:25:08> NNNN
```

Varberg does not send a unique identifier, so here Yand must identify the station by finding matching geographical identifiers for all 'I'-stations in its database.

'I' + 'BALTIC' and/or 'SKAGERRAK' and/or 'KATTEGAT' = \$01I SAS Varberg.

No other Navtex station in the world with identifier 'I' would ever mention 'SKAGERRAK'.

Obviously, for this to work correctly, the identifier letter must be received *correctly and in combination with a correct ZCZC header!*

Note that the globally unique identifiers can successfully identify a station even when only bits and pieces were received:

```
22:37:24> ~~~~~~{ }~~~~~{ }~~~~~{ }~~~~~{ }OR SYDNEY VCO
AT ~~~~~ ~C~{ }C NIL~
22:37:24> ~~~~~
22:37:31> ~OW E~C ~~~~N{ }I NR CA~~~~~LTOH~~~~~
22:38:07> { }
22:38:14> UNATAI~ABL~~~N~IL FUR~HER REQUEST.
22:38:15> ~~NN~~
```

SYDNEY VCO = > VCO Sydney, CAN

```
16:22:58> 332938N ~~~332158~3 33195~N 333908~E
16:23:05> 332015N 341215ER33~~1619N $41633~
16:23:09> 330013N~~~ 3~1501~3
16:23:14> -)) VTSNELS~ARE~~~ DEQUESTED NOT T~
16:23:19> APPROACH~~ W~TH~N 8 NM OC
16:23:23> THE MENT~~U~IONES ~ES~ELJM
16:23:24> ISR AUTH
16:23:26> ~~~NNNN
```

“ISR AUTH” (Israeli Authority) is only used by \$03P 4XO,Haifa,ISR

Some messages are impossible for Yand to identify because no hints at all are present:

```
18:00:38> ZCZC MA16
18:00:41> 251011 UTC DEC =
18:00:43> WZ 1512
18:00:51> WZ MESSAGES IN FORCE AT 251000 UTC DEC :
18:00:54> 1351 (OG25) (16)
18:00:58> 1364 (GA35) (4)
18:02:03> 1505 (EA15) (MA15) (5+6)
18:02:09> 1508 (OA37) (10+11)
18:02:12> 1510 (GA14) (1)
18:02:18> 1511 (OA38) (NIL) .+
18:02:18> NNNN
```

Is Yand's station identification feature infallible?

No! It may fail when intermixed fragments from different stations were received as happens often in Europe where certain Navtex timeslots are shared between stations in 3 or more navarea's. As explained earlier, precedence is given to identification by *globally unique identifiers*. (GUI) If this attempt succeeds, the identification process stops, no matter what other geographical identifiers may be present in the message.

In the example below, a message from \$03B,Alger is in the middle of transmission interrupted by \$03P,Haifa. Yand logged the message as \$03P because of the GUI 'ISR AUTH' it found.

```
00:10:50> ZCZC BE69
00:10:53> 17.09 12.52 LT
00:11:01> WEATHER FORECAST FOR SHIPPING ISSUED BY METEO ALGIERS
00:11:03> GALE WARNING NIL
00:11:12> GENERAL STATE AND EVOLUTION MEAN PRESSURE OVER THE BASIN
00:11:18> FORECAST FOR TOMORROW SEPTEMBER 18 2001
00:11:20> ALBORAN
00:13:02> LVIS~ 2~~~~IL~~
00:24:03> ~~~~~{ }PC~CD~E~~TZIZ~~~~U~~ ~UXW
00:24:13> P~~~~~A~~{ }QTIT ISRAELI CHART 3~5
00:24:20> A NEW BERTH IS BEINGVCONSTRUCTED IN THE~~~O~T
00:24:26> O~ ~~IFA~IN THE FOLLOWING POSITIOI:~~
00:24:32> 32 ~$~& 48`~0.538``N 035 DEG 00`41.392``E
00:24:39> ~EW DEG 48`52.058``N 035 DEG 00`50.833``E
00:24:48> 32 D~G 49`14.501``N 035 DEG ~0`46.625``E
00:24:54> 32 DEG 49`15.770``N 035 DEG 00`56.117``E
00:25:02> 32 DEG 49`12.817``N 035 DEG 00`58.617``E
00:25:10> ~2 DEG 48`44.241``N 035 DEG 01`03.974``E
00:25:11> ISR AUTH
00:25:11> NNNN
```

If the identification by GUI fails, *and* a correct ZCZC-sequence with ID-letter is present, Yand will stop on the first matching geographical identifier it finds, no matter what other identifiers may be present in the rest of the message. Consequently, the message below will be logged as coming from \$02D,Coruna, ESP. Note that a correct header must look like ZCZC <space><A..Z>

```
20:30:14> ZCZC DE09
20:30:18> 08 1707 UTC JAN 10
20:30:21> WEATHER BULLETIN
20:30:21>
20:30:22> NR
20:30:23> ROUTINE
20:30:23>
20:30:28> SPANISH METEOROLOGICAL AGENCY
20:30:28> ~~~~~~A~~~~
20:31:14> ZCZ~ DA17 <= incomplete header!
20:31:16> FAROE ISLANDS
20:31:20> 051700 UTC. JAN. 10
20:31:23> NAV. WNG. NR. 01
20:31:26> UPDATE:
```

Using the Keyword List Editor

Yand comes with a fairly extensive database of keywords. European stations are perfectly covered as this is my home continent. USCG are reasonably documented but far from perfect. Asia is the least documented. You can however add your own keywords in order to

Keyword List Editor

STATION LIST

- 490 3U UKW Kerch,UKR
- 518 3U IQM Mondolfo,ITA
- 490 3V 7TA Alger,ALG
- 518 3V ICI Sellia Marina,ITA
- 518 3W UJB Astrakhan,RUS
- 518 3W FRL LaGarde,FRA
- 490 3W ICI Sellia Marina,ITA
- 490 3X UTT Odesa,UKR
- 518 3X EAV Valencia,ESP
- 518 4A NMA Miami,USA
- 518 4B ZBM Bermuda Harbour ,BER
- 518 4C VCK Sept-Iles,CAN
- 490 4D VCK Sept-Iles,CAN
- 518 4E NME Charleston,USA
- 518 4F NMF Boston,USA**
- 518 4G NMG New Orleans,USA
- 518 4H JPC Curacao ,ATN
- 518 4H XMJ329 Prescott, ON,CAN
- 518 4I XXX Upernavik/Disko Isl.,GRL
- 490 4J VCO Sydney,CAN
- 518 4M XXX Simiutag/Cape Farewell,GRL
- 518 4N NMN Portsmouth,USA
- 518 4O VON St.Johns,CAN
- 518 4P XLJ895 Thunder Bay, ON,CAN
- 518 4Q VCO Sydney,CAN
- 518 4R NMR San Juan,PTR
- 490 4S VFF Iqaluit, NU,CAN
- 518 4T VFF Iqaluit,CAN
- 490 4T VFN-3 Montreal, QC ,CAN
- 518 4U VAR-9 Fundy, NB,CAN
- 490 4V VAR-3 Yarmouth,CAN
- 518 4W OXI Nuuk,GRL
- 518 4X VOK Labrador [JUL-OCT],CAN
- 518 4X VOK Labrador,CAN
- 490 5A CWM27 La Paloma,URG
- 518 5F CWM27 La Paloma .URG

Select Keyword Type

- ☒ Show Geographical Keywords (GID)
- ☐ Show Unique Keywords (UID)

518 4F NMF Boston,USA

- CCGD5
- CCGDFIVE
- SUSQUEHANNA
- CHESAPEAKE
- MAINE
- CAPE COD
- NANTUCKET
- NEW ENGLAND
- STURGEON
- BARNEGAT
- NOVA SCOTIA
- RCC BOSTON

115 chars used, MAX = 300

NEW KEYWORD

ADD

CONFIRM KEYWORD LIST

- have fewer UNIDs in your logs. The process is quite straightforward.
- In the left window, click on the station that you wish to edit. The keywords – if available – for that station will appear in the right column.
- To add a keyword, enter it in the New Keyword input field and press ADD.
 - To delete a keyword, double-click it and confirm.
 - To change a keyword, delete it and add the correct version again.
 - You cannot add the same keyword more than once.
 - When finished, press Confirm Keyword list.
 - GIDs and UIDs are separately listed. Note that the Confirm Keyword List function only saves the list that is currently visible, not both lists!
- There is room for 300 characters in total for each station.

YaND Word Autocorrection

As far as I know, YaND is the only Navtex decoder implementing automatic word correction. When YaND detects a word containing errors (i.e. one or more '~' characters are present) it will try to reconstruct the word by scanning an internal “maritime vocabulary” for an (almost) matching word, or possibly multiple words. To indicate the word was reconstructed it will be enclosed in [square brackets]. Note that autocorrection is done on the stored message, not “live” in the message window.

```
00:50:21> ZCZC~FA51
00:50:24> 24~100 UTC SEP 10
00:50:29> [COASTAL] [WARNING] [ARKHANGELSK] 58
00:50:33> [SOUTHERN] PART WHITE S~A
00:50:42> 1. MISSILES LAUNCHES 303SEP THRU~04 OCT ~PW~P DTO 1600
00:50:47> ?~,~8&-589, 0~9#8?853$ 8, -43-
00:50:53> 65-1~.5N 036-37.0E 65-37.2N 036-26.0E
00:51:00> 66-12.3N 037-19.0E 66-04.0N 037-47.0E
00:51:06> 66-03.0N 038-38.0E 66-06.5N~038-5~~0E
00:51:14> 65-10.5N 037-30.:EU65-1~.1N 0$6-49~5E~~
00:51:22> THEN COASTAL L~NU 65-12.2N E~EYARUMYE~U~~M ~MANCEL T
00:51:26> IS [MESSAGE] 041700 O~T=
00:51:27> NHNN
00:51:27>
```

In some situations, multiple matches will be found, this is inevitable:

```
04:21:26> ISLAND AND RAS D`OR AAKE~VN
04:21:32> PRINCE~EDWARD [INLAND|ISLAND] COAST, GULF OF
04:21:39> ST.LAWRENCE~AND NORTHUMBERLAND [STRAIT]
```

To reduce the chances for false or silly reconstructions, the reconstruction algorithm applies the following rules:

- Candidates for reconstruction must be at least 5 characters long and cannot be longer than 16 characters long.
- Candidates for reconstruction cannot have more than 50% '~' characters.

After applying the above rules, one (rare) situation remains where 7 reconstruction candidates will be found: [BIGHT|EIGHT|LIGHT|NIGHT|RIGHT|SIGHT|WIGHT], where ~IGHT was originally decoded.

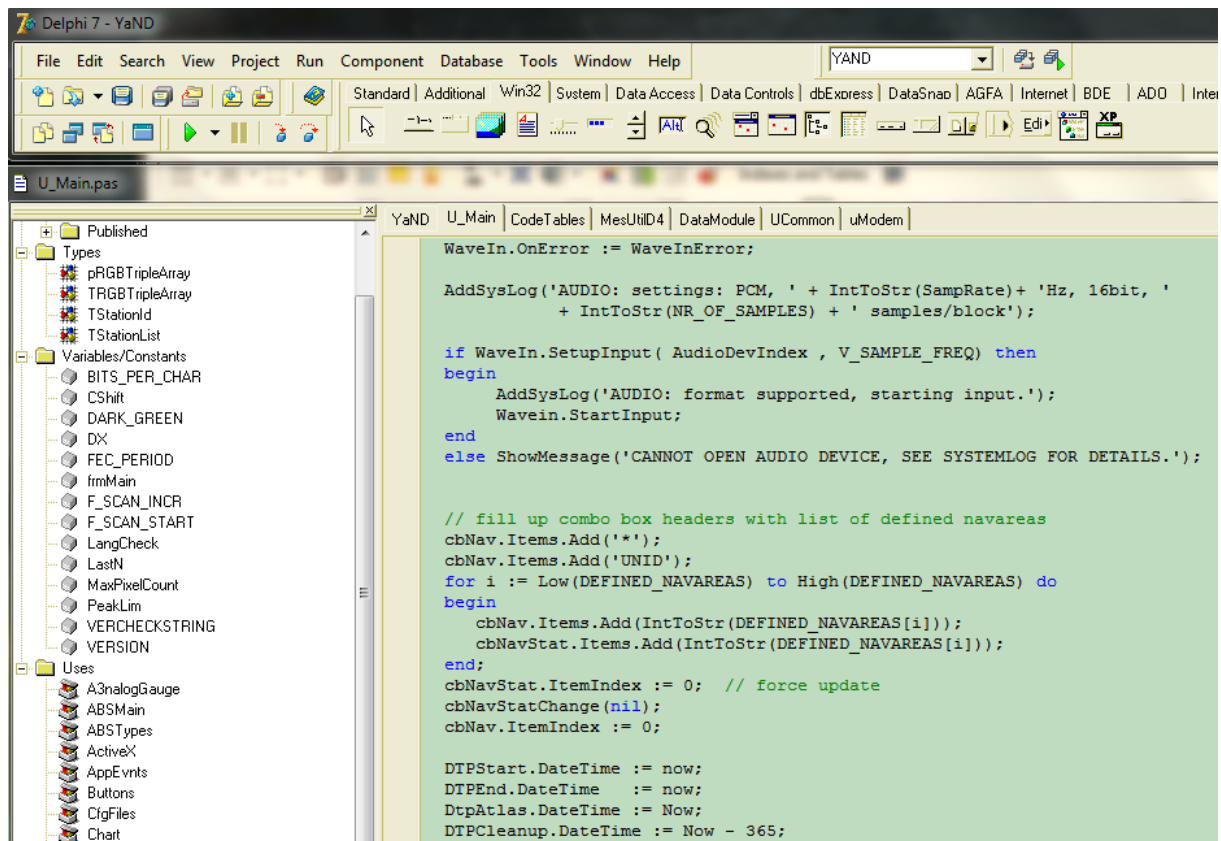
The maritime vocabulary was compiled by scanning many thousands of navtex messages from my own logs and from Navtex websites all over the world. The list is surprisingly short: only 1800 unique words were found, indicating that – apart from geographical descriptors – mostly the same jargon is consistently used in most Navtex messages.

Running multiple instances of YaND

As from version 6.1, it is possible to run multiple instances of YaND. The only thing you need to do is to install each instance in a separate directory. Simply change the install path proposed by the installer to YAND2, or whatever you prefer. The installer will also put a second/third/... shortcut on your desktop. To avoid confusion, it is a good idea to give the shortcuts sensible names.



The Making of



YaND was developed with Borland's Delphi 7 Enterprise Edition, using the programming language Object Oriented Pascal.

The task was started early 2007, not coincidentally around the time when I retired :0) . I mostly worked on it during evening hours, and at first had to do a lot of study on Digital Signal Processing, one of the rare software areas I had never done any work on in my professional career at Agfa Belgium.

Beginning 2008 I had the raw decoder functions working, without any bells & whistles. Then came the further refining, and adding the tools I felt every Navtex DX-er should have at its fingertips from *within* the decoder. Number of source code lines so far: +/- 28000 and counting.

Hope you enjoy YaND!
73s - Dirk

edited with LibreOffice Writer v3.6.1.2