

GPS
Vehicle
Tracker

User Manual

V1.4

GTLT3

Table of Contents

1. Product Overview.....	3
2. Specification.....	4
3. Wiring Installation.....	4
3.1. Product Parts List	5
3.2. Precaution before Installation	5
3.3. Installation.....	5
4. SMS Command List.....	7
5. Track by 900D web based tracking software.....	10
Contacts.....	12

1. Product Overview

Thank you for your purchase of GTLT3 Vehicle GPS Tracker. The GTLT3 GPS/GSM Tracker is a vehicle remote position device with build-in GPS and GSM/GPRS modules. It is a small size, high accuracy remote location tracking device. Based on GPS satellite, it provides accurate position information under dynamic conditions.

Function List:

- GSM 850/900/1800/1900MHz
- Wide Voltage:9-70V DC
- Track on demand
- Built in memory to store historical data
- Show location directly on mobile phone or PC
- Inbuilt shock sensor for power saving, vehicle anti-theft
- ACC detectin, vehicle state hint
- SOS alarm
- Over speed alarm
- Power cut off alarm
- Remote monitoring of voice
- Remote Turn on/off Car Engine



Applications:

GTLT3 GPS/GSM vehicle tracker can be used for motorcycle, electric golf cart, car, and scooter. The devices built in antenna, integrative machine and easy to assemble.

For your safety:

In order to realize the full functions of this product, please read this manual carefully before starting to use the product.

1.	This product can only be maintained and repaired by qualified professional service personnel. If you detach this product for maintenance or repair, your warranty will be invalidated.
2.	When connecting the other devices, read carefully their instruction manuals, so as to carry out correct installation; do not connect incompatible device.
3.	Please use genuine original parts and qualified batteries and peripheral equipments, so as to avoid damage to this product.
4.	As this product is a high-tech product, please read carefully this manual before starting to use the product, so as to avoid inappropriate operation.
5.	Drivers should not operate this product while driving a vehicle, thereby, affecting safe driving.
6.	This product can work properly only when GSM communication is in good condition.
7.	Please reduce electromagnetic wave interference to the product; and use it properly.
8.	GPS communication is liable to be affected by environmental shielding; may fail to carry out positioning during certain circumstances. It will resume the positioning function as soon as it leaves the shielding environment. This is normal. Please do not worry when encountering such problem.
9.	Each signal sent out from the system will be confirmed for successful transmission in the base station of the mobile operator. However, if system stoppage occurs or if the mobile telephone is preset to a switch off state by the customer, it cannot ensure successful transmission.
10.	For safety reason, do not tell the other people your GTLT3 mobile number, without taking precautions.





Otherwise, your privacy may be compromised along with other safety problem.

2. Specification

GSM module	GSM 850/900/1800/1900 quad-band GPRS:Class 12,TCP/IP
GPS sensitivity	-164dB
C/A Code	1.023MHz chip rate
Channels	210 channel all-in-view tracking
GPS frequency	L1,1575.42MHz
GPS Position Accuracy	10m(2D RM)
GSM Position Accuracy	Later will realize
Velocity Accuracy	0.1m/s
Time Accuracy	Synchronized to GPS time
Cold Start	30sec.,average
Hot Start	5sec.,average
Warm Start	29sec.,average
Altitude Limit	18,000 meters (60,000feet) max.
Velocity Limit	515 meters/second (1000knots) max.
Acceleration Limit	Less than 4g
Operating temperature	-20°C—65°C
Humidity	5% To 95% Non-condensing
Dimension	90mm×45mm×14mm
Voltage	9-70V DC
Average Current	≈25mA(12V DC) ≈12mA(24V DC)
LED	Red/ Blue/ Yellow LED showing power /GPS/GSM status
Out set SOS Key	One SOS emergency key: for urgent call

3. Wiring Installation

3.1. Product Parts List

GPS Tracker Unit	
SOS Button and Socket cables	
Mic(Optional)	
Relay(Optional)	

3.2. Precaution before Installation

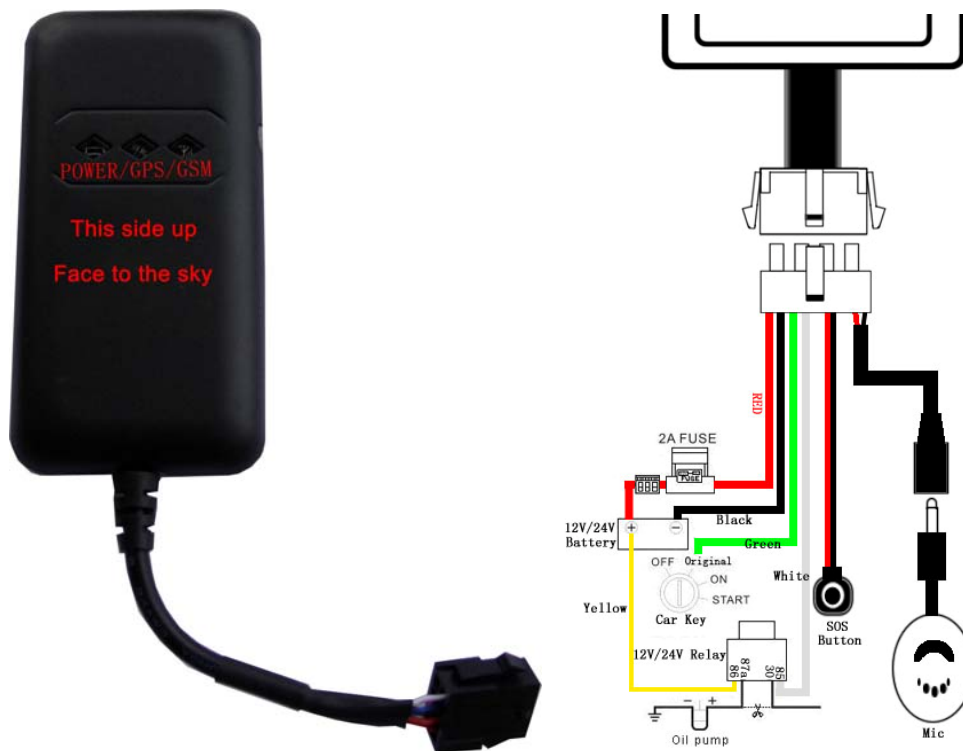
1	Check if all the parts are included.
2	Prepare a SIM card for GSM communication. Use some other mobile phone to confirm that the PIN code has not been set and that it can dial out and receive telephone calls and SMS without problem.
3	Before install the SIM card; make sure to cut off power from the GPS Tracker unit. The correct installation method is to push the tray completely into the GPS Tracker unit, until you feel it is hooked by something.
4	<p>Find a suitable place inside the car for installing the unit.</p> <p>Concealed installation for avoid the thieves damage</p> <p>Avoid install together with the RF source, such as reversing radar, alarm and other vehicle communication equipment.</p> <p>Can use ribbon or wide sponge strength double-faced adhesive stick to fix.</p> <p>Equipment with GSM antenna and GPS antenna, installation shall ensure that face up (skyward), and above no metal barrier shield, suggest installation position:</p> <p>Front windshield decorative below the covert,</p> <p>Front panel (skin for non-metal material) around the shadow</p> <p>Rear window below decorative</p>
5	Check if all the wiring has been connected correctly; then connect the GPS Tracker unit to the power supply.
6	We don't provide the SIM card

3.3. INSTALLATION

3.3.1 Step 1: Install SIM Card

1	Insert the SIM card by sliding it into the card slot.
2	Make sure to turn off the power before install the SIM card.
3	Make sure to deactivate the PIN code, so that the SIM card can operate without PIN protection.
4	Before install the SIM card to the GPS Tracker, please use a mobile phone to make sure the SIM card can make & receive phone calls without problem.
5	Before install the SIM card to the GPS Tracker, please use a mobile phone to empty the SMS storage of the SIM card.

3.3.2 Wiring Description:



3.3.3 Description of GTLT3 LED :

LED State Description

Red LED--- indicate charge sate

State	Means
-------	-------

On 0.1s, Off 2s	Working normal
On 1s, Off 2s	Low battery
Off	Device sleep or device power off

Blue LED--- indicate the GPS signal state

State	Means
On 0.1s, Off 2s	Working and has located
On 1s, Off 2s	Searching GPS signal
Off	Device sleep or device power off

Yellow LED--- indicate the GPS signal state

State	Means
On 0.1s, Off 2s	GSM/GPRS Working normal
On 1s, Off 2s	GSM/GPRS initialization
Off	Device sleep or device power off

4. SMS Command List

All of the following commands must be lowercase letters, all of the send commands will be reply. If set successful it will reply "set success!" otherwise need to set again. Send the corresponding commands the device will reply the corresponding results.

Description	SMS Command	Example
Set control authorized number (Default 1)	any,1#	any,1#
Remarks: if any,0# means is only authorized number can control GTLT3.		
Set the authorized number(Default null)	admin123456,13812345678	admin123456,13812345678
Delete the authorized number	noadmin123456,d	noadmin123456,d
Remarks: Default is no authorized number, any mobile phone can set GPS tracker by SMS command; once you set authorized number, only the authorized number can set GPS tracker by SMS command.		
Set SOS specific number(Default null)	sos,no1,13412345678,no2,13512345678, 78,no3,13612345678 Or sos,no1,13412345678	sos,no1,13412345678,no2,13512345678,no3,13612345678 Or sos,no1,13412345678

Delete SOS specific number	sos,no2,13512345678 sos,no3,13612345678 sos,no1,d,no2,d,no3,d or sos,no1,d sos,no2,d sos,no3,d	sos,no2,13512345678 sos,no3,13612345678 sos,no1,d,no2,d,no3,d or sos,no1,d sos,no2,d sos,no3,d
Change GPS Tracker user Password(Default 123456)	password123456,444444	password123456,444444
Remarks: The password will be changed from 123456 to 444444		
Set Lang and Time Zone(Default 0 0)	lang,x,zone,n	lang,0,zone,8
Remarks: language options:x=0 is English,x=1 is Chinese. Time zone options: n=8 is East eight areas 8 ,n=-3 West three areas for -3 Default language 0,time zone 0		
Case 1:Set IP and Port(Default ip58.64.205.22port8000)	ip58.64.205.22port8000	ip58.64.205.22port8000
Remarks: IP is your server's IP and Port.		
Case 2: Set Domain and Port	url:www1.igpstracking.net,port:8000	url:www1.igpstracking.net,port:8000
Remarks: www1.igpstracking.net is domain, 8000 is port		
Set interval time of GPRS data upload when ACC ON(Default 12s)	interval,t	interval,12
Remarks: t:from 10 to 1800 in the unit of second.		
Set interval time of GPRS data upload when ACC OFF(Default 480s)	off,t	off,480
Set sleep time when car stop(Default 0)	sleep,t	sleep,20
Remarks: t:from 0 to 1800 in the unit of minutes. When the car stops reach the sleep time you set, GPS tracker will in sleep mode,the GPS module shut down.Platform show is invalid location.		
Set wake up regularly when enter sleeping(Default 0)	awaker,t	awaker,8
Remarks : t:from 1 to 1800 in the unit of minutes. When the car stops reach the sleep time you set, GPS tracker will in sleep mode; user can set wake up interval, then GPS tracker can wake up regularly by the interval you set and upload the latest location. Default is 0 minute, means not wake up regularly in sleep mode.		
Get google link	google	google
Remarks:Get google link.		
Set monitor number((Default null)	monitor,13112345678	monitor,13112345678
Remarks: 13112345678 is mobile phone number(Sell phone number)		
SOS alarm		
Remarks: press SOS button in emergency situation, then GPS tracker will call the 3 sos numbers, first sos number 1, if no answer, then call sos number 2, if no answer, then call sos number 3, if fail, then call again from sos number 1-3 one moe time.		
Cut off main power alarm		
Remarks: when the main power is off, GPS tracker will send main power off alarm and present location to 900d gps platform, and one alarm SMS to authorized number, and call the 3 sos specific phone numbers by turns(call 6 times total if no one answer the call, 6 minutes interval each time)		

Set continuous shock will wake up and trigger shock alarm when sleeping(Default 5s)	shock,t	shock,5																												
Remarks: t:from 1 to 1800 in the unit of second. Default is 5 seconds. When car power is off, the ACC status is off, if ACC off status lasts more than the time you set, GPS tracker will start the "guard situation" automatically, if car shocks multi times will trigger shock alarm status, if the car power is still off(acc status is off), the GPS tracker will send shock alarm and present location to 900d gps platform, and one alarm SMS to authorized number, and call the 3 sos specific phone numbers by turns(call 6 times total if no one answer the call, 6 minutes interval each time)																														
Auto Guard(Default 0)	autofortify,10	autofortify,10																												
Remarks: set the auto guard time, default is 0 minutes																														
Set ON/OFF Guard manually(Default OFF)	fortify,p	fortify,1																												
Remarks:p=1 on p=0 off																														
Disable/Enable Car Fuel	oil,p	oil,1																												
Remarks:p=1 Disable car fuel p=0 Enable car fuel																														
Get device Version	version	version																												
Remarks: Get device Version																														
Restart GPS tracker	reboot	reboot																												
Remarks: Received this instructions,GPS Tracker will be in 5 seconds after the restart.																														
List of default state:																														
<table border="1" style="width: 100%; border-collapse: collapse;"> <thead> <tr> <th style="width: 70%;">Parameter</th> <th style="width: 30%;">Default State</th> </tr> </thead> <tbody> <tr> <td>Working Mode</td> <td>GPRS</td> </tr> <tr> <td>Pre-set phone numbers</td> <td>Null</td> </tr> <tr> <td>GPS Tracker user Password</td> <td>123456</td> </tr> <tr> <td>GPS</td> <td>ON</td> </tr> <tr> <td>ACC Switch status Prompt</td> <td>ON</td> </tr> <tr> <td>Press SOS button to call out</td> <td>ON</td> </tr> <tr> <td>Server's IP address and port</td> <td>58.64.205.22 8000</td> </tr> <tr> <td>interval time of GPRS data upload when ACC ON</td> <td>12s</td> </tr> <tr> <td>interval time of GPRS data upload when ACC OFF</td> <td>480s</td> </tr> <tr> <td>Lang and Time Zone</td> <td>En(0) 0</td> </tr> <tr> <td>sleep</td> <td>off</td> </tr> <tr> <td>wake up regularly when enter sleeping</td> <td>not wake up (0)</td> </tr> <tr> <td>Auto Guard</td> <td>no</td> </tr> </tbody> </table>			Parameter	Default State	Working Mode	GPRS	Pre-set phone numbers	Null	GPS Tracker user Password	123456	GPS	ON	ACC Switch status Prompt	ON	Press SOS button to call out	ON	Server's IP address and port	58.64.205.22 8000	interval time of GPRS data upload when ACC ON	12s	interval time of GPRS data upload when ACC OFF	480s	Lang and Time Zone	En(0) 0	sleep	off	wake up regularly when enter sleeping	not wake up (0)	Auto Guard	no
Parameter	Default State																													
Working Mode	GPRS																													
Pre-set phone numbers	Null																													
GPS Tracker user Password	123456																													
GPS	ON																													
ACC Switch status Prompt	ON																													
Press SOS button to call out	ON																													
Server's IP address and port	58.64.205.22 8000																													
interval time of GPRS data upload when ACC ON	12s																													
interval time of GPRS data upload when ACC OFF	480s																													
Lang and Time Zone	En(0) 0																													
sleep	off																													
wake up regularly when enter sleeping	not wake up (0)																													
Auto Guard	no																													

	Main Power Cut Alarm
	ON

5. Track by 900D web based tracking software Setup

5.1. Set the authorized number and SOS number:

	Command	Remark
Set control authority	any,1#	any,1#
Remarks: if any,0# means is only authorized number can control GTLT3.		
Set the authorized number	admin123456,13812345678	Password is 123456
Delete the authorized number	noadmin123456,d	Authorized number :13812345678 d: delete the authorized number
For example:	admin123456,13812345678	Default is no authorized number, any mobile phone can set GPS tracker by SMS command; once you set authorized number, only the authorized number can set GPS tracker by SMS command.
Set SOS specific number	sos,no1,13412345678,no2,13512345678,no3,13612345678 Or sos,no1,13412345678 sos,no2,13512345678 sos,no3,13612345678	sos,no1,13412345678,no2,13512345678,no3,13612345678 Or sos,no1,13412345678 sos,no2,13512345678 sos,no3,13612345678
Delete SOS specific number	sos,no1,d,no2,d,no3,d or sos,no1,d sos,no2,d sos,no3,d	sos,no1,d,no2,d,no3,d or sos,no1,d sos,no2,d sos,no3,d

5.2. Set Lang and Time Zone(Default 0 0)

	Command	Remark
Set Lang and Time Zone(Default 0 0)	lang,x,zone,n	language options:x=0 is English,x=1 is Chinese. Time zone options: n=8 is East eight areas 8 ,n=-3 West three areas for -3 Default language 0,time zone 0
For example:	lang,0,zone,8	

5.3 Set APN (if can not connect to 900D platform,so need set APN, if can connect to 900D platform,please omit this step.Because GTLT3 has been built-in Global APN,GTLT3 will automatically identify APN)

	Command	Remark
Set APN (Default:cmnet)	Case 1: apn,apn name# Case2: apn,apn name,user,apn user name,pd,apn password Case 3: Case2: apn,apn name,user,apn user name,pd,apn	(1)If no APN username and password are required, just input APN only. (2)Use format 2 if your APN requires APN user name and APN password. (3)Use format 3 if your APN requires APN user name and APN password. And plmn value.

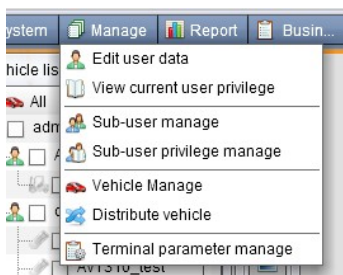
	password,plmn,plmn value	(4) APN is gateway to connect internet, Each country is different, please contact your SIM card provider for APN name.
For example:	Case 1:apn,cmnet# Case 2:apn,cmnet,user,zhang,pd,abc 123456 Case 3:apn,cmnet,user,zhang,pd,abc 123456,plmn,46000	

5.3 Please go to <http://www1.igpstracking.net>

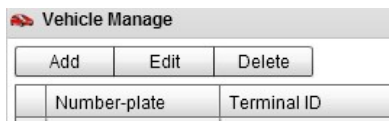
Enter the user name and password we provided.

Enter the user name and password we provided.

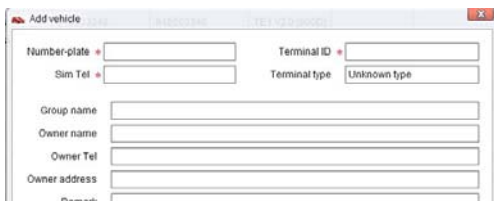
After log in, please go to “Vehicle Manager-Vehicle List”



You will see the below window



Please click “Add” button, you will see the below window:



License Plate: Define by yourself; you can enter A-Z number or Numeric

Very Important Note: Terminal ID and Plate number are unique on the software, you can add once only, you need to delete it from database before adding it again. Only admin account can delete id from database, general user cannot. You do not need to delete and re-add if the device cannot work on software, because it's caused by your wrong sms setting, not the software.

Terminal Type: **Do not choose.**

SIM card: the SIM card phone number you put in GTLT3 or any number.

Terminal ID: On the vehicle of GTLT3, you can find the “Terminal ID”.



Add vehicle

Number-plate * GTLT3 TEST Terminal ID * 4503782778

Sim Tel * 1234569 Terminal type Unknown type

Group name

Owner name

Owner Tel

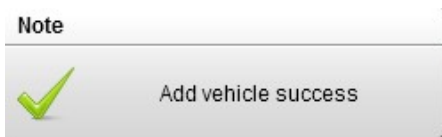
Owner address

Remark

Vehicle icon

Ok Close

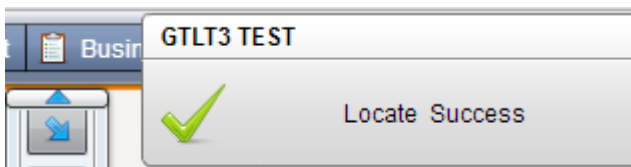
Click "Submit", and then you add the GPS tracker GTLT3 successfully on the software 900D.



Wait few seconds, and you will see the GPS Tracker online icon on software



Put a check mark on the device, and right click, you will see the menu as below picture. Now you can track online.



Attention: For 900D GPS Software, "Monitor" and "Number Plate" must be checked till the font becomes blue, then the GPS tracker will update location automatically on map. Like below picture:



Contacts

If you encounter any problems when using our products, and cannot solve them by yourself, please contact our technical support team by writing an E-Mail to us. We will be pleased to help you.