

UK Subject to change

Document Ref:
FKZ-205/16501/PMR23/Issue 1/April 02

Copyright ©
These instructions are the sole property of Ferm-Omega Tools and may not be reproduced

USER'S MANUAL

Ferm Compound Mitre Saw

FKZ-205



Ferm[®]

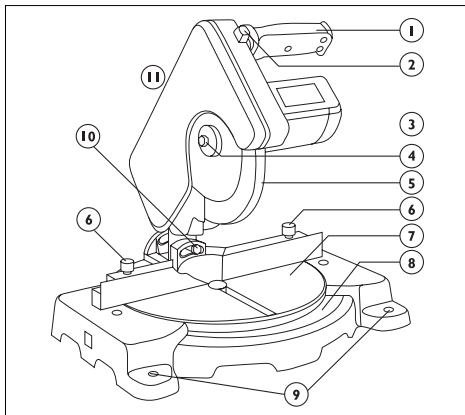
Art.nr. 727200
Screwfix nr. 16501

**FERM FKZ-205
COMPOUND MITRE SAW
USERS MANUAL**

TECHNICAL SPECIFICATIONS

Voltage	230 V~
Frequency	50 Hz
Power input	800 W
No-load speed	4500/min
Sawblade dimensions 205 (TCT)	205 x 18 mm
Cutting capacity 90°	120 x 50 mm
Cutting capacity 45°	70 x 50 mm
Weight	7.0 kg
Lpa (sound pressure)	88.9 dB(A)
Lwa (acoustic power)	101.9 dB(A)
Vibration value	2.5 m/s ²


PRODUCT INFORMATION



1. Grip with switch
2. Unlocking button
3. Motor housing + cover graphite brushes
4. Saw blade attachment
5. Moveable safety guard
6. Table adjustment screws
7. Rotary table
8. Degree scale
9. Fastening holes
10. Bevel adjustment bolt
11. Protective cover


SAFETY INSTRUCTIONS

The following pictogram is used in these instructions for use:

 Denotes risk of personal injury, loss of life or damage to the tool in case of non-observance of the instructions in this manual.

Carefully read this manual before using the machine. Make sure that you know how the machine functions and how to operate it. Maintain the machine in accordance with the instructions to make sure it functions properly. Keep this manual and the enclosed documentation with the machine.


Ferm products are manufactured to high quality standards, they are safe and fit for purpose at time of sale, but all tools can be dangerous if the correct precautions are not taken. Always follow these instructions, do not carry out the operation until you are sure you can do so in safety. Remember to consider the work environment for safe operation as well as safety for tool use.

 **Warning!** When using electric tools, basic safety precautions should always be followed to reduce the risk of fire, electric shock and personal injury. Read all these instructions before attempting to operate this product. Save these instructions for future reference.

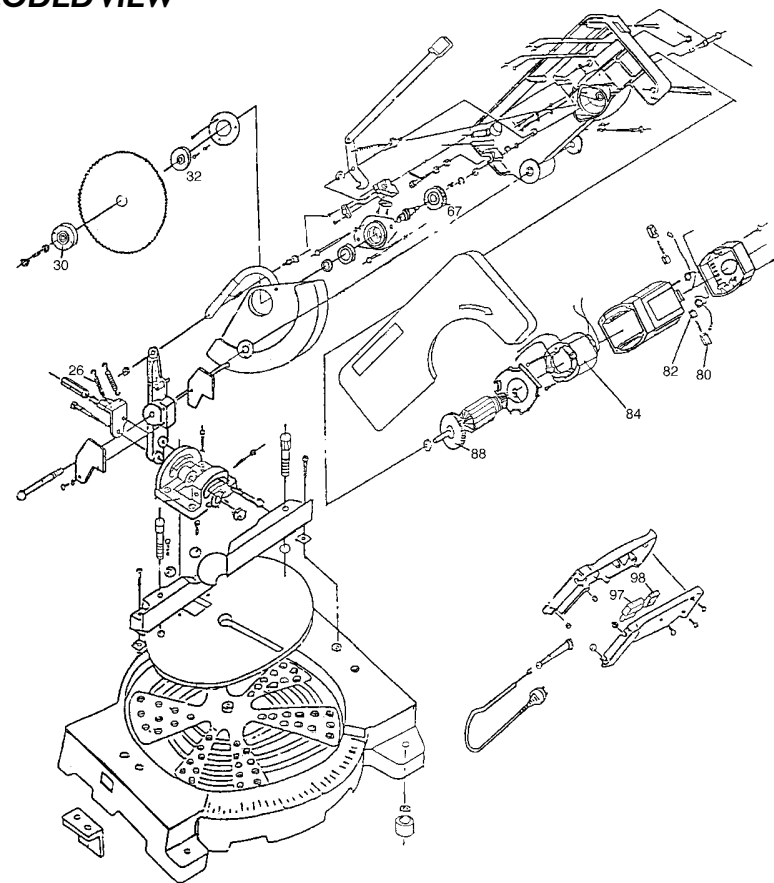
PERSONAL SAFETY
Use Personal Protection Safety Equipment
Protect eyes with safety glasses or goggles note: the use of safety protective eyewear without the CE mark can lead to serious injury if the lens breaks. A suitable dust mask should be worn if cutting, drilling or sanding is dusty, in particular chipboard or MDF.
Approved safety footwear and headgear should worn as appropriate, for example on building works or when heavy weights are involved. Wear suitable gloves and apron to protect against sparks/debris. Wear earplugs or ear defenders.

Dress properly
Do not wear loose clothing or jewellery. It can get caught in moving parts. Non-skid footwear is recommended when working out doors. Wear protective hair covering to contain long hair.

Stay alert
Watch what you are doing Use common sense. Do not operate tools when tired or after taking alcohol or prescription/ non-prescription drugs.

OPERATIONAL SAFETY
 **Warning!** This machine can produce fine dust, which can be harmful to your health – always wear a suitable dust mask and other protection equipment as appropriate. Use dust extraction.

EXPLODED VIEW



SPARE PARTS LIST FKZ-205

REF NR	DESCRIPTION	FERM NR
26	SPRING	407630
67	GEAR WHEEL	407631
32	POSITIONING RING	407632
30	CLAMP RING	407633
88	ROTOR-ASSEMBLY	407634
84	STATOR ASSEMBLY	407635
82	CARBON BRUSH WITH SPRING	407636
80	BRUSH HOLDER	407637
98	CAPACITOR	407638
97	SWITCH	407639

ELECTRICAL INFORMATION

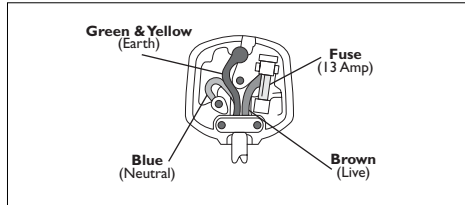
This product is complete with a pre-wired mains plug, it is double insulated in accordance with EN 50144 – no earth wire is required.

If the plug needs replacing follow these instructions.

Wire correctly

The wires in the mains lead are coloured in the following way:

BLUE -Neutral
BROWN -Live



Securing wires

Secure wires carefully and firmly to the correct terminals. Secure the mains cable in the plug cord grip firmly. Fit a 13-amp fuse. If a 13amp (BS1363) plug is used a (BS1362) ASTA approved 13-amp fuse must be fitted.

Recycle/Dispose of old plug and cable

Prevent inadvertent connection to socket and risk of electric shock.

ENVIRONMENT

Recycle the packaging according to the identification marks on it.

At the end of the product or its accessories life please recycle where facilities exist - phone the Helpline for current advice on recycling.

Helpline

For any questions relating to operational or safety matters contact:

Ferm Customer Helpline on: **0115 966 1199**
Monday-Friday **8am – 6pm**
Saturday **9am – 1pm**

GUARANTEE

The guarantee conditions can be found on the separately enclosed guarantee card.



We declare under our sole responsibility that this product is in conformity with the following standards or standardized documents

EN61029-1, prEN61029-2-9, EN55014-1, EN55014-2, EN61000-3-2, EN61000-3-3

in accordance with the regulations:

**98/37/EEC
73/23/EEC
89/336EEC**

from 10-02-2000
GENEMUIDEN NL
W. Kamphof
Quality department

Concentrate

Routine and repetition can lead to mistakes. Remember that a slight lack of concentration can result in serious injuries in a split second.

Keep work area clean

Cluttered areas and benches invite injuries,

Consider the work environment

Do not expose power tools to rain or use them in damp or wet locations. Keep work area well lit. Do not use power tools in the presence of flammable liquids, vapours or gases.

Guard against electric shock

This unit contains dangerous voltages. Use a RCD (residual current device) to provide protection against electrical shock. Prevent body contact with grounded surfaces (e.g. pipes, radiator, ranges or refrigerators).

Keep children and pets away

Do not let children or pets come into contact with the tool, extension cable or work area.

Do not force the tool

It will work better and safer at the rate for which it was intended.

Use the right tool

Do not force small tools or attachments to do the job of a heavy-duty tool. Do not use tools for purposes for which they were not intended; for example do not use a circular saw for cutting trees or logs.

Do not abuse the cable

Never carry the tool by the cable or pull it to disconnect it from the power socket. Keep the cable away from heat, oil and sharp edges. Do not touch the metal plug pins when connecting or removing the plug.

Secure work

Use clamps or a vice to hold work. It is safer than using your hand and it frees both hands to operate the tool.

Do not over-reach

Keep a proper footing and balance at all times.

Disconnect tools from power supply

When not in use, before servicing and when changing accessories such as blades, bits and cutters. **Always switch off and unplug the saw from the power supply before making adjustments or changing blades.**

Remove adjusting keys and wrenches

Ensure that they are removed from the tool before switching on.

Avoid unintentional starting

Do not carry plugged in tools with your finger on the switch. Check that the switch is off before plugging in to socket.

Extension cables

Use only three core earthed extension cables suitable for the power input of the tool (minimum cable size 1.5mm²). Plug into an earthed socket only.

When using a cable reel unwind it fully. Do not use long extension cables.

Outdoors use

If the tool is suitable to be used outdoors, only use an extension cable intended for outdoor use and marked accordingly. Use a RCD (residual current device) to provide protection against electrical shock. Do not use in rain or damp conditions.

Connect a dust extraction device

Whenever there are facilities for fitting a dust or fume extraction system, make sure it is connected and used.

Use recommended accessories

The use of any other accessory or attachment other than recommended in the instructions or catalogue may present a risk of personal injury.

Extension cables

Use extension cables suitable for the power input of the saw (minimum cable size 1.5mm²). For cable lengths over 15 metres to a maximum of 40 metres use 2.5mm². When using a cable reel unwind the cable fully.

OPERATING THE COMPOUND MITRE SAW



Ensure the saw is unplugged from mains before changing blades, adjusting or inspecting.

BEFORE USING THE SAW

- Place the unit on a level stable bench or surface; make sure that the rubber feet grip on the surface and that the saw cannot slip.
- The holes (9) in the illustration below are for fixing the unit to the bench with bolts (recommended).
- Route the mains lead away from the saw.
- The unit is equipped with a connection for a dust extractor (not supplied) -it is strongly recommended that dust extraction be used while operating this saw.

UNLOCKING THE MACHINE

Refer to illustration below.

- Press the saw head downwards with your left hand and pull the head lock button (a) out with your right hand.
- Allow the saw head to rise up and lock in its upper position.

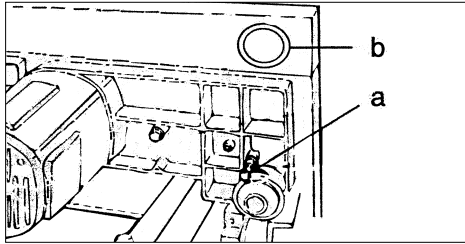
CHANGING/FITTING SAW BLADES

Refer to illustration below.

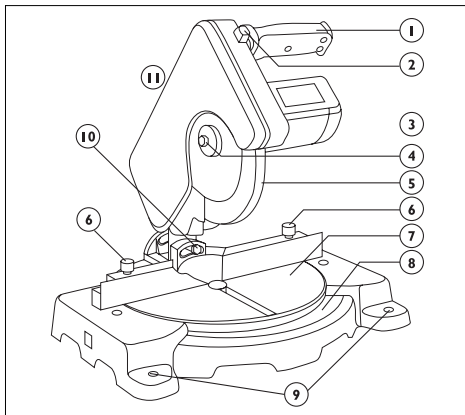


Use suitable gloves – saw blades are very sharp.

- Unscrew the four screws securing the protective cover (11) with a suitable screwdriver and remove the cover.
- Hold the outer flange washer with the wrench supplied and turn the nut (4) clockwise with the 13mm box spanner also supplied.
- Remove the nut, outer flange washer and saw blade (if fitted) and replace with new blade.
- Make sure the inner flange washer is in place and on the shaft the correct way round to fit the saw blade hole diameter (one side is for 18mm diameter and the other is for 20mm holes).
- Make sure the direction arrow on the blade points in the same direction as the arrow on the protective cover, the teeth point downwards towards the front of the saw.
- Replace the outer flange making sure that the flats on the shaft line up with those in the flange.



- Screw the nut with its washer in hand tight anticlockwise, hold the outer flange with the wrench and tighten the nut securely with the box spanner.
- Replace the protective cover and screws with their washers/lock washers and tighten.
- Check that the safety device and blade covers are fitted properly and working.



TO ADJUST THE HEAD AND TABLE ANGLES

The unit can saw horizontally and diagonally at any angle up to 45 degrees left or right, or any combination of these.



The degree scales are for indication only. For accurate angles test the set angle by sawing a piece of scrap first, measuring and adjusting the saw as required.

To adjust the angles

Refer to illustration above.

The head angle is adjusted by reference to the degree scale on the rear of the head bracket.

- To adjust the head angle slacken the clamp bolt (10) at the rear of the head bracket with the box spanner or black thumb key provided and set the head to the angle required. Tighten the clamp bolt to secure.
- To adjust the head stop screws – the stop screws have been adjusted in the factory to stop the head at a 45 degrees angle (left and right) – to adjust, slacken to lock bolt on the head bracket and turn the set screw with a suitable screwdriver to stop the head the angle required, tighten the lock bolt after adjustment.
- To adjust the table angle – slacken the thumbscrews (6) and turn the saw head to the desired angle, which is indicated on the degree scale (8). Tighten the thumbscrews to lock.

To adjust the eccentric stop washers

The table has eccentric stop washers, which can be adjusted to stop the table rotation at exactly 45 degrees. Refer to illustration above.

- Slacken the hexagon bolt securing the eccentric stop washer.
- Rotate the table to make the correct angle with the fence and turn the stop washer to touch the back of the fence, tighten bolt to secure.

BEFORE OPERATING

- Check the voltage on the saw corresponds with your power supply voltage and that the plug and lead are in good condition.
- Do not use parts other than supplied with the machine to make the blade fit properly.
- Check you have a blade suitable for the saw and the material being cut and that it is in good condition and secure. If any teeth are missing or the blade shows cracks or other damage – replace immediately.
- Do not use parts other than supplied with the machine to make the blade fit properly.
- The blade must conform to EN-847-1
- Turn the saw blade by hand to see that it turns freely in all head/table positions – if the blade touches any part of the table, fence or guards the saw must be readjusted before use.
- Check all adjusting screws are secure
- Run the saw idle for 30 seconds – if there is any abnormal vibration or other fault – switch off, inspect and rectify before continuing.

USING THE SAW

This saw is intended for use on wood, wood derived products and light metals such as aluminium only

OPERATION

Refer to the illustration above.

- Plug into a suitable mains supply and switch on.
- To switch the saw ON – depress the trigger switch on the saw handle (1)
- To switch OFF – release the trigger switch.
- To rotate the saw head downwards to cut the workpiece – press the unlock button (2).
- Return the saw head to its upper position after use.

DURING USE



Let the blade come to full speed before cutting the work piece.

- Do not force the saw
- Press the saw head downwards with gentle pressure. Let the saw do the work.
- Check material for foreign bodies
- For example check for nails screws etc.
- Clamp material properly
- Do not use hand or foot to support the work piece. Use a suitable clamp to secure the workpiece against the fence/table, use additional support for long lengths. Use packing to support uneven shapes when clamping them
- Be aware that this is a powerful saw – unclamped or unsupported workpieces can kick causing injury.
- Never saw several workpieces at the same time.
- Use constant gentle pressure.
- If the blade seizes in the cut, switch off, unplug and open the cut with a suitable tool before pulling the blade out – never switch the saw on with the blade jammed.
- Do not use the machine without the guards in position – do not override the blade guard, it will open automatically.
- Regularly inspect the blade (unplug first) during use for signs of damage or wear and sharpen/replace when required. Only use the recommended saw blades.
- Switch the machine off before removing the plug from the mains socket.
- Be careful. Keep your hands away from the blade.

MAINTENANCE, CARE AND REPAIR



Switch off and unplug the machine before carrying out any cleaning, adjusting or changing blades.

CLEANING

Clean the saw with a soft brush or a cloth just moistened with soapy water (dry off afterwards). Do not use flammable liquids to clean the saw, they can damage the plastic parts and are a fire risk.

FAULTS

Switch OFF immediately at the mains plug and remove the plug when:

- The plug or cable is damaged.
- The switch on the machine is defective.
- You smell or see smoke caused by scorched insulation in the machine.

Overheating

The motor runs hot (over 70 degrees)

- The motor has been overloaded, cut more slowly.
- Clean the motor air slots
- The motor is defective; take to your local dealer for repair.

The saw does not work when switched on

- Damaged plug/fuse, replace as required.
- Defective switch, take to local dealer for repair.

The saw does not cut cleanly and wanders off line

- The blade is blunt or bent, replace blade with suitable resharpened or new one.
- The saw makes a lot of noise and does not run smoothly. Take to your local dealer for inspection or repair.
- The carbon brushes are worn and need replacing; they should only be replaced by a competent person or your Ferm dealer.

The dust is not being extracted

- Clean the dust extractor port



There are no user serviceable/repairable parts inside this unit. Qualified service engineers must carry out repair and servicing.

MAINTAIN TOOLS WITH CARE

Keep the tool clean for better and safer performance.

Store the blades properly in accordance with the maker's instructions.

Follow instructions for changing accessories. Inspect tool and extension cables periodically and if damaged, have them repaired by a qualified person or authorised service body. Keep handles free from oil or grease. Keep the ventilation slots clean to prevent the motor overheating.

Check for damaged parts

Do not use a tool with damaged parts, before further use a damaged tool must be carefully checked by a qualified person to determine that it will operate properly. Check for alignment of moving parts, binding or breakage of parts, mounting and other conditions that may affect its operation. A damaged part or guard should be properly repaired by an authorised service centre, unless indicated otherwise in the instruction manual. Have defective switches replaced by an authorised service centre. Do not use a tool if the switch does not turn on and off.

Have your tool repaired by an expert

This appliance is manufactured in accordance with relevant safety standards. Only experts must carry out repairing of electrical appliances, otherwise considerable danger for the user may result.

Storing tools

When not in use tools should be stored in the dry, out of reach of children.

Lubrication. The machine requires no user lubrication