

User's Guide



USB to Serial Converter

TU-S9

Contents

Product Overview	1
Package Contents	1
Features	1
Product Hardware Features	2
Application Diagram	2
Windows Installation	3
Windows 8	3
Windows 7 / Vista	4
Windows XP / 2000 / ME / 98SE	6
Verify the Driver Installation on Windows	7
Mac Installation	8
Mac OS X 10.7 ~ 10.6	8
Mac OS X 10.1 ~ 10.5	10
Verify the Driver Installation on Mac	12
Technical Specifications	12
Troubleshooting	13
Limited Warranty	13

Product Overview



TU-S9

Package Contents

- TU-S9
- Quick Installation Guide
- CD-ROM (Driver & User's Guide)

If any package contents are missing or damaged, please contact the retail store, online retailer, or reseller/distributor that the item was purchased.

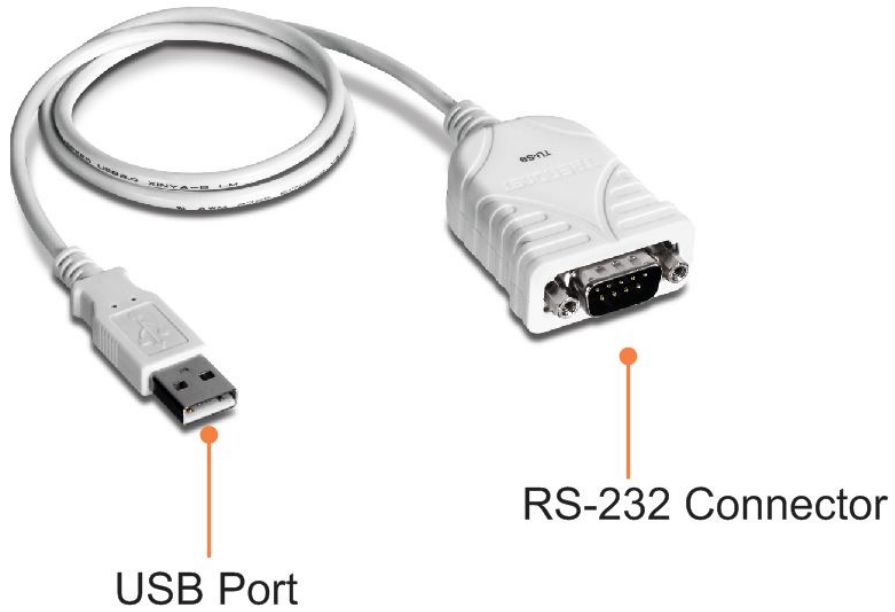
Features

This USB to Serial converter allows you to connect a RS-232 serial device such as a modem to a USB port on your Desktop or Laptop PC.

- Connect a RS-232 serial device such as a modem to a USB port on your computer
- Easy installation with Universal Plug and Play
- Supports multiple operating systems

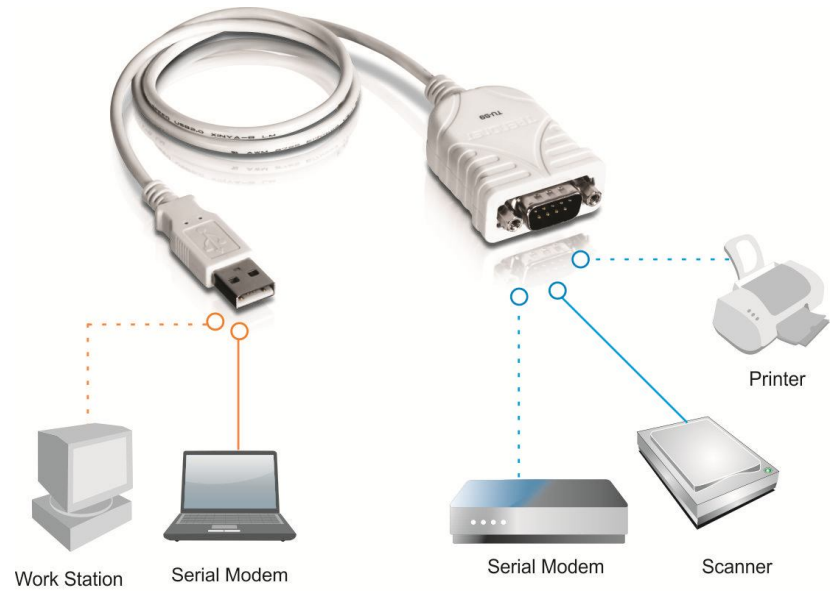
Product Hardware Features

Product View



- **USB Port** - Connect the USB Port to your computer
- **RS-232 Connector** - Connect the RS-232 connector to your Series Device.

Application Diagram



Windows Installation

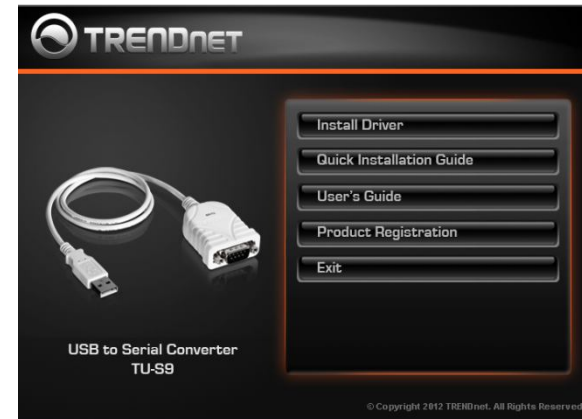
Windows 8

Note: DO **NOT** connect the USB Serial Converter to your computer before completing the driver installation.

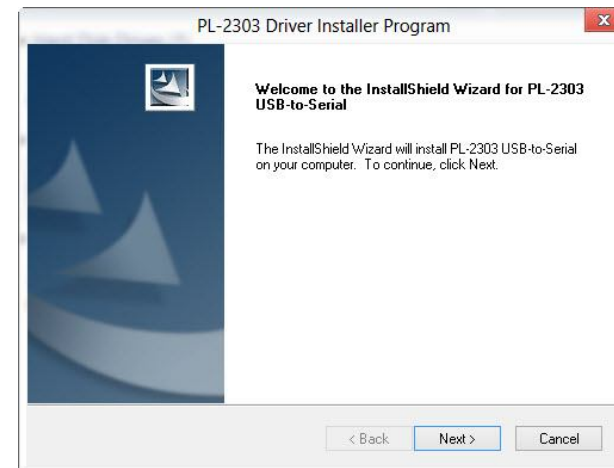
1. Insert the provided CD into your CD-ROM drive.
2. Click **Autorun.exe**.



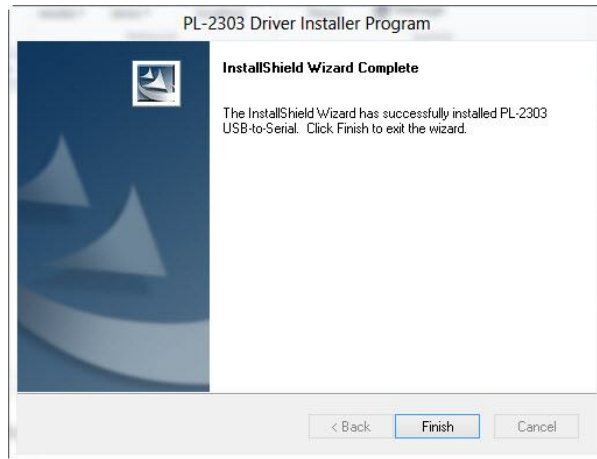
3. Click **Install Driver**.



4. Click **Next**.



5. Click **Finish**.

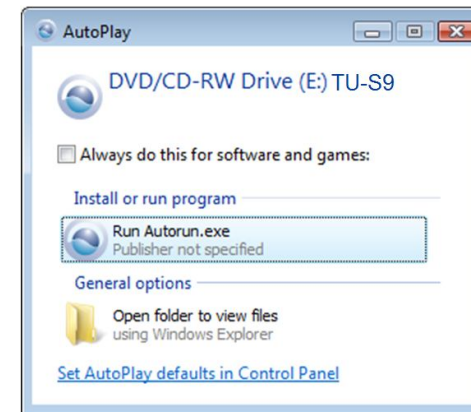


6. Connect the TU-S9 to an available USB port of your computer.
7. Drivers will install automatically.
8. Connect the serial device to the TU-S9 serial port.

Windows 7 / Vista

Note: DO NOT connect the USB Serial Converter to your computer before completing the driver installation.

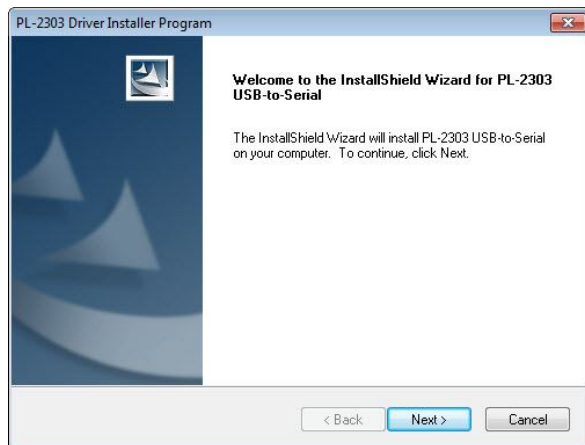
1. Insert the provided CD into your CD-ROM drive.
2. Click **Autorun.exe**.



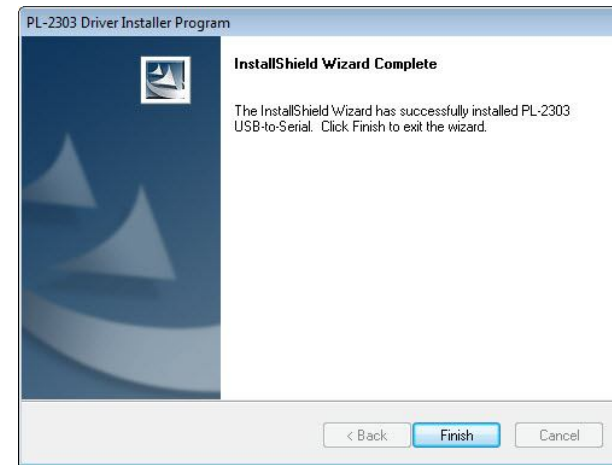
3. Click **Install Driver**.



4. Click **Next**.



5. Click **Finish**.



6. Connect the TU-S9 to an available USB port of your computer.
7. Drivers will install automatically.
8. Connect the serial device to the TU-S9 serial port.

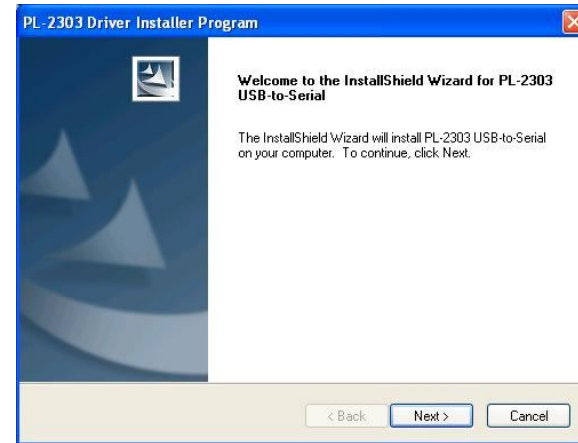
Windows XP / 2000 / ME / 98SE

Note: DO NOT connect the USB Serial Converter to your computer before completing the driver installation.

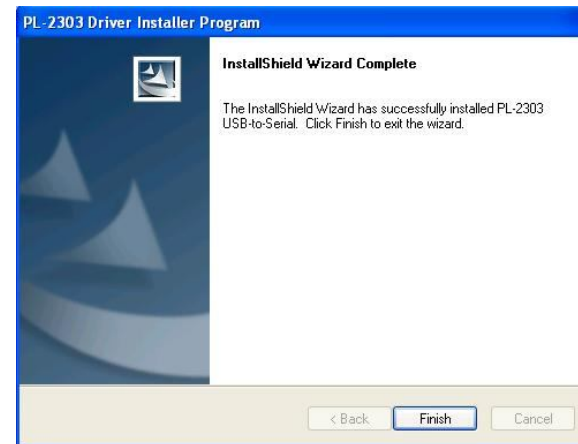
1. Insert the provided CD into your CD-ROM drive.
2. Click **Install Driver**.



3. Click **Next**.



4. Click **Finish**.



5. Connect the TU-S9 to an available USB port of your computer.
6. Drivers will install automatically.
7. Connect the serial device to the TU-S9 serial port.

Verify the Driver Installation on Windows

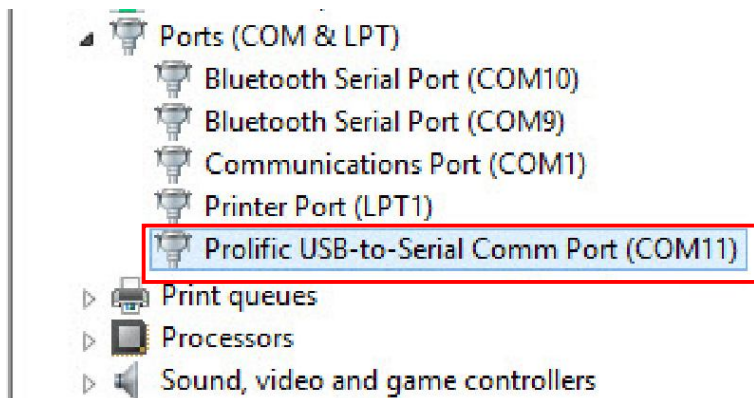
To verify the installation of the TU-S9, please follow the steps below.

- On Windows 8: Right-click on **Computer > Manage > Device Manager**.
- On Windows 7/Vista: Right-Click on **Computer > Properties > Device Manager**.
- On Windows XP/ 2000 / ME / 98SE: Right-click on **My Computer > Properties > System > (Hardware) > Device Manager**.

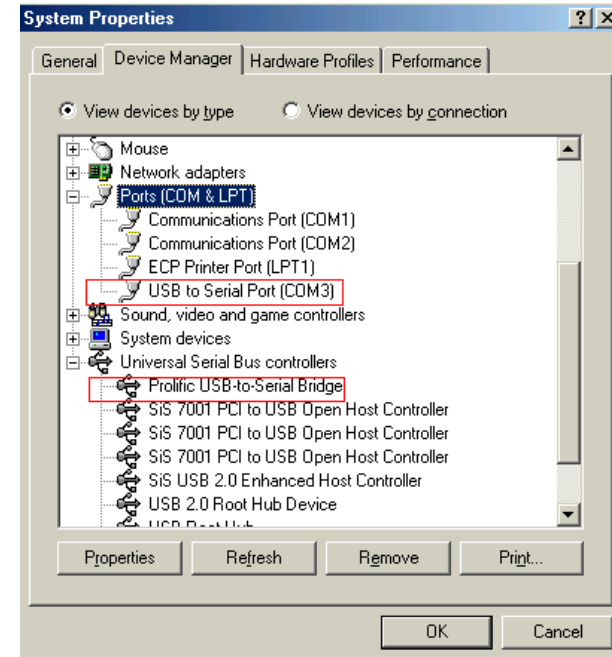
In the **Ports (COM & LPT)** group, a string similar to **Prolific-USB- to- Serial Comm Port** should be displayed.

If there is a question or exclamation mark next to that item, then the driver is not properly installed. Please delete the item and repeat the installation steps.

Windows 8 / 7 / Vista / XP / 2000



Windows 98SE/ME



Mac Installation

Mac OS X 10.7 ~ 10.6

1. Insert the provided driver CD into your CD-ROM drive. Double-click the CD icon on the desktop and navigate to the directory of **Driver\Mac_OSX\Mac_OSX10.7_10.6**



PL2303_1.4.0.dmg

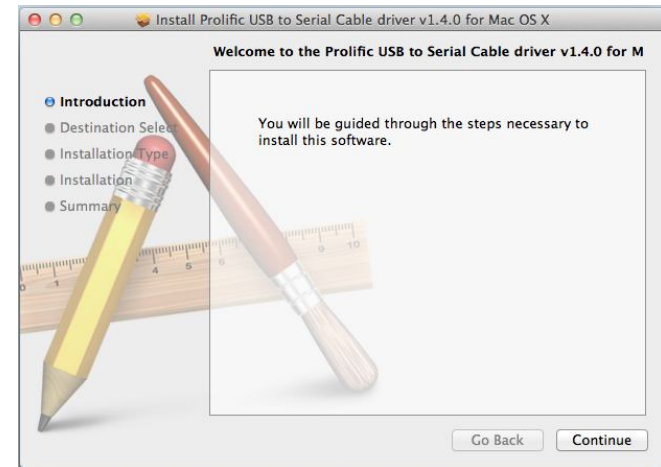
2. Double-click the **PL2303_1.4.0.dmg** file to mount the driver installer image.



PL2303_1.4.0

3. Please double-click pl **PL2303_1.4.0** to execute the installer program

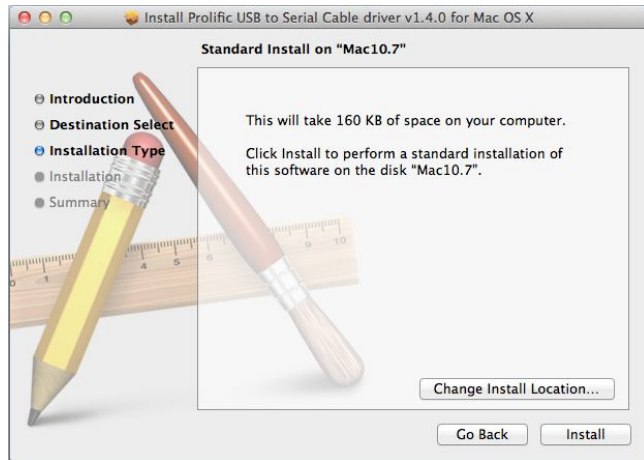
4. When the welcome screen appears, click **Continue**.



5. Select a destination disk to install the driver and click Continue.



6. Click **Install**.



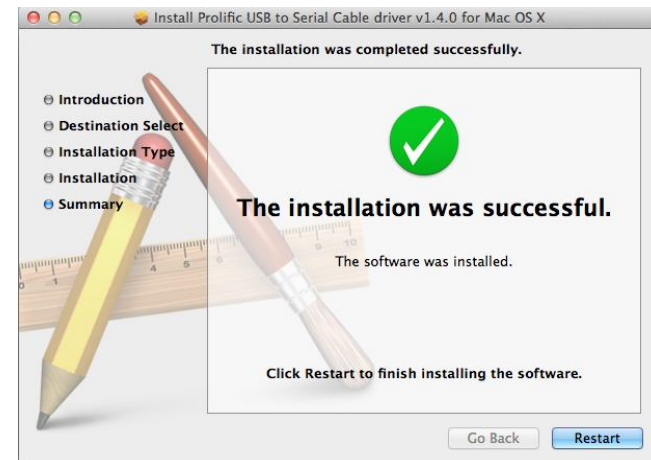
7. When the **Authenticate** screen appears, enter your password in the provided field and click **OK**.



8. Click **Continue Installation**.



9. Click **Restart** to finish installing the driver and reboot your Mac.



10. Connect the converter to a free USB port on your Mac.
11. Connect the serial device to the TU-S9 serial port.

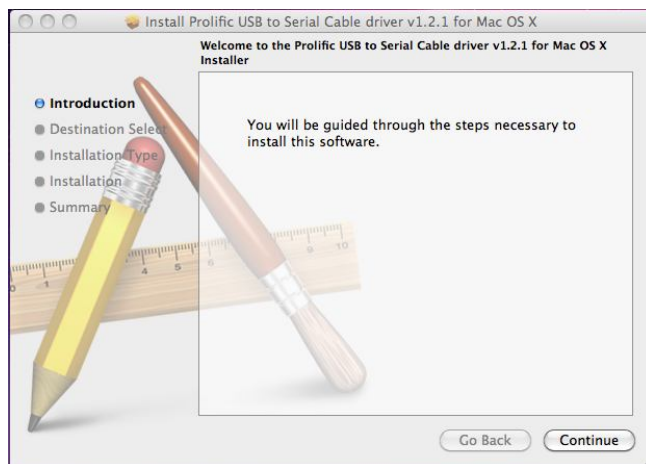
Mac OS X 10.1 ~ 10.5

1. Insert the provided driver CD into your CD-ROM drive. Double-click the CD icon on the desktop and navigate to the directory of **Driver\Mac_OSX\Mac_OSX10.1_10.5**. Copy and then paste the **PL2303_1.2.1r2.dmg** file to the desktop.
2. Double-click the dmg file on the desktop to extract the file. Then double-click the **PL2303_1.2.1** file that is extracted.



PL2303_1.2.1

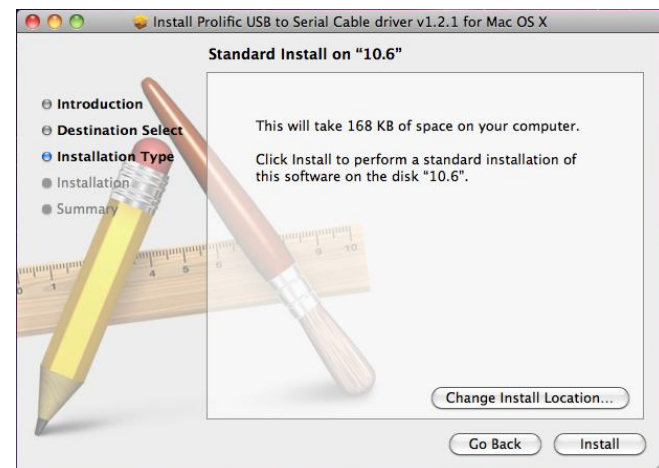
3. When the welcome screen appears, click **Continue**.



4. Select a destination disk to install the driver and click **Continue**.



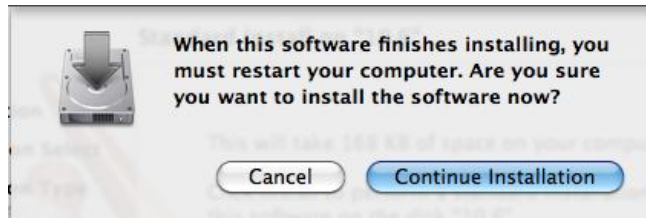
5. Click **Install**.



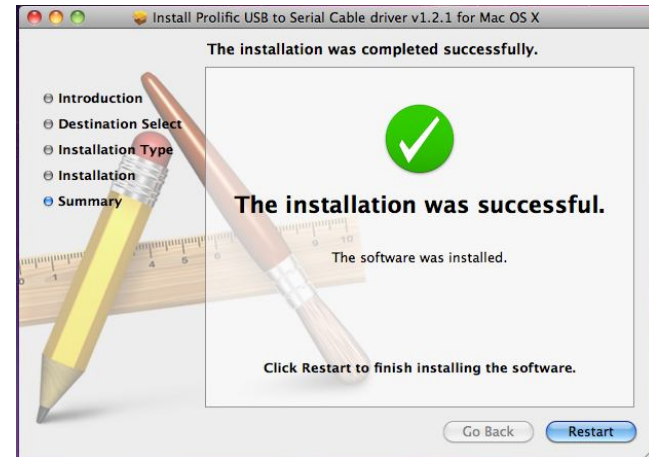
6. When the **Authenticate** screen appears, enter your password in the provided field and click **OK**.



7. Click **Continue Installation**.



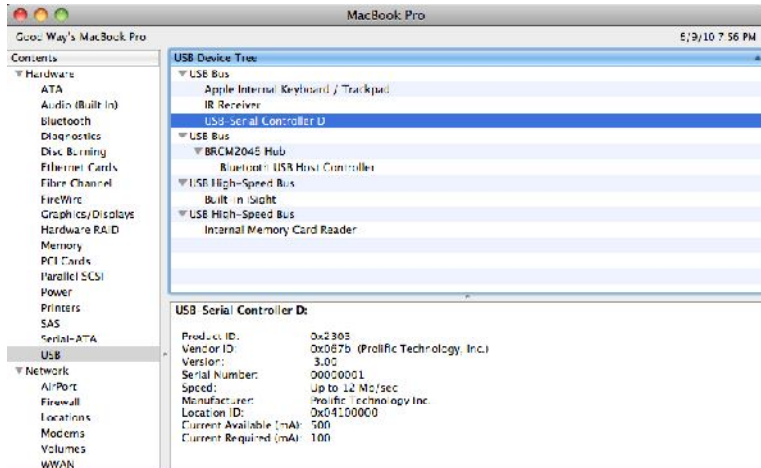
8. Click **Restart** to finish installing the driver and reboot your Mac.



9. Connect the converter to a free USB port on your Mac.
10. Connect the serial device to the TU-S9 serial port.

Verify the Driver Installation on Mac

Go to **Apple System Profiler > Extensions** and you should find **USB Serial Controller** among the list. This means the installation is successfully done.



Technical Specifications

Hardware	
Interface	USB 1.1 Type A RS-232 (9-pin) Male
Supported OS	Windows 8 (32/64-bit) / Windows 7 (32/64-bit) / Vista (32/64-bit) / XP (32/64-bit) / 2000 / ME / 98SE Mac OS 10.1~10.7
Cable Length	6.9 cm (27 inches)
Cable Gauge	28/24 AWG
Data Rate	500kbps
Power Consumption	500mA (max)
Weight	75g. (0.2 lb)
Operating Temperature	0° C ~ 40° C (32° ~ 104° F)
Storage Temperature	-10° C ~ 45° C (14° F ~ 113° F)
Humidity	Max. 85% (non-condensing)
Certifications	CE, FCC

Troubleshooting

1. The autorun window does not appear on my windows PC after I put in the Driver CD-ROM. What should I do?

- a. Go to the Desktop on your computer.
- b. Click on Computer or My Computer
- c. Double click on the CD-ROM drive
- d. Double click on the autorun.exe icon.

2. Windows is unable to recognize my hardware. What should I do?

Try plugging the TU-S9 into the different USB port.

3. Can I use the TU-S9 with my serial keyboard, mouse, or joystick?

The TU-S9 does not support interrupt transfer mode devices. If your serial keyboard, mouse, or joystick is an HID Device, it is not supported.

4. Can I connect or disconnect the TU-S9 while the computer is on?

Yes, you can connect or disconnect TU-S9 while the computer is on because the USB interface is Plug-and-Play compliant and hot-pluggable.

Limited Warranty

TRENDnet warrants its products against defects in material and workmanship, under normal use and service, for the following lengths of time from the date of purchase.

TU-S9 – 2 Years Limited Warranty

AC/DC Power Adapter, Cooling Fan, and Power Supply carry 1 year warranty.

If a product does not operate as warranted during the applicable warranty period, TRENDnet shall reserve the right, at its expense, to repair or replace the defective product or part and deliver an equivalent product or part to the customer. The repair/replacement unit's warranty continues from the original date of purchase. All products that are replaced become the property of TRENDnet. Replacement products may be new or reconditioned. TRENDnet does not issue refunds or credit. Please contact the point-of-purchase for their return policies.

TRENDnet shall not be responsible for any software, firmware, information, or memory data of customer contained in, stored on, or integrated with any products returned to TRENDnet pursuant to any warranty.

There are no user serviceable parts inside the product. Do not remove or attempt to service the product by any unauthorized service center. This warranty is voided if (i) the product has been modified or repaired by any unauthorized service center, (ii) the product was subject to accident, abuse, or improper use (iii) the product was subject to conditions more severe than those specified in the manual.

Warranty service may be obtained by contacting TRENDnet within the applicable warranty period and providing a copy of the dated proof of the purchase. Upon proper submission of required documentation a Return Material Authorization (RMA) number will be issued. An RMA number is required in order to initiate warranty service support for all TRENDnet products. Products that are sent to TRENDnet for RMA service must have the RMA number marked on the outside of return packages and sent to TRENDnet prepaid, insured and packaged

appropriately for safe shipment. Customers shipping from outside of the USA and Canada are responsible for return shipping fees. Customers shipping from outside of the USA are responsible for custom charges, including but not limited to, duty, tax, and other fees.

WARRANTIES EXCLUSIVE: IF THE TRENDNET PRODUCT DOES NOT OPERATE AS WARRANTED ABOVE, THE CUSTOMER'S SOLE REMEDY SHALL BE, AT TRENDNET'S OPTION, REPAIR OR REPLACE. THE FOREGOING WARRANTIES AND REMEDIES ARE EXCLUSIVE AND ARE IN LIEU OF ALL OTHER WARRANTIES, EXPRESSED OR IMPLIED, EITHER IN FACT OR BY OPERATION OF LAW, STATUTORY OR OTHERWISE, INCLUDING WARRANTIES OF MERCHANTABILITY AND FITNESS FOR A PARTICULAR PURPOSE. TRENDNET NEITHER ASSUMES NOR AUTHORIZES ANY OTHER PERSON TO ASSUME FOR IT ANY OTHER LIABILITY IN CONNECTION WITH THE SALE, INSTALLATION MAINTENANCE OR USE OF TRENDNET'S PRODUCTS.

TRENDNET SHALL NOT BE LIABLE UNDER THIS WARRANTY IF ITS TESTING AND EXAMINATION DISCLOSE THAT THE ALLEGED DEFECT IN THE PRODUCT DOES NOT EXIST OR WAS CAUSED BY CUSTOMER'S OR ANY THIRD PERSON'S MISUSE, NEGLIGENCE, IMPROPER INSTALLATION OR TESTING, UNAUTHORIZED ATTEMPTS TO REPAIR OR MODIFY, OR ANY OTHER CAUSE BEYOND THE RANGE OF THE INTENDED USE, OR BY ACCIDENT, FIRE, LIGHTNING, OR OTHER HAZARD.

LIMITATION OF LIABILITY: TO THE FULL EXTENT ALLOWED BY LAW TRENDNET ALSO EXCLUDES FOR ITSELF AND ITS SUPPLIERS ANY LIABILITY, WHETHER BASED IN CONTRACT OR TORT (INCLUDING NEGLIGENCE), FOR INCIDENTAL, CONSEQUENTIAL, INDIRECT, SPECIAL, OR PUNITIVE DAMAGES OF ANY KIND, OR FOR LOSS OF REVENUE OR PROFITS, LOSS OF BUSINESS, LOSS OF INFORMATION OR DATA, OR OTHER FINANCIAL LOSS ARISING OUT OF OR IN CONNECTION WITH THE SALE, INSTALLATION, MAINTENANCE, USE, PERFORMANCE, FAILURE, OR INTERRUPTION OF THE POSSIBILITY OF SUCH DAMAGES, AND LIMITS ITS LIABILITY TO REPAIR, REPLACEMENT, OR REFUND OF THE PURCHASE PRICE PAID, AT TRENDNET'S OPTION. THIS DISCLAIMER OF LIABILITY FOR DAMAGES WILL NOT BE AFFECTED IF ANY REMEDY PROVIDED HEREIN SHALL FAIL OF ITS ESSENTIAL PURPOSE.

Governing Law: This Limited Warranty shall be governed by the laws of the state of California.

Some TRENDnet products include software code written by third party developers. These codes are subject to the GNU General Public License ("GPL") or GNU Lesser General Public License ("LGPL").

Go to <http://www.trendnet.com/gpl> or <http://www.trendnet.com> Download section and look for the desired TRENDnet product to access to the GPL Code or LGPL Code. These codes are distributed WITHOUT WARRANTY and are subject to the copyrights of the developers. TRENDnet does not provide technical support for these codes. Please go to <http://www.gnu.org/licenses/gpl.txt> or <http://www.gnu.org/licenses/lgpl.txt> for specific terms of each license.

P05202009v2

2012/07/24



Product Warranty Registration

Please take a moment to register your product online.
Go to TRENDnet's website at <http://www.trendnet.com/register>

TRENDnet
20675 Manhattan Place
Torrance, CA 90501. USA