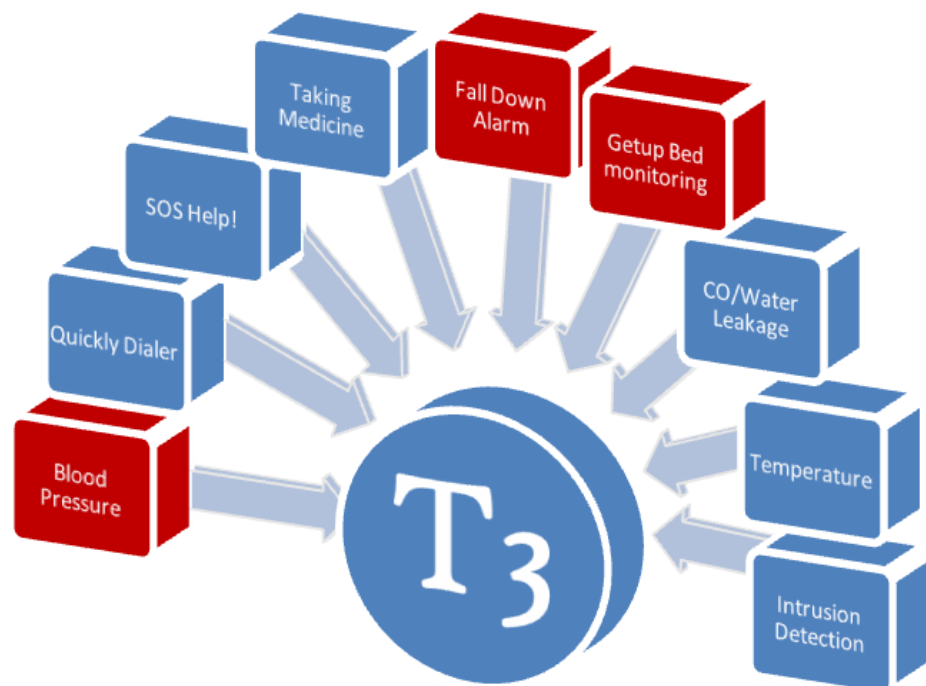


GSM 3G Senior Helper Telecare&Telehealth

An Advanced
Programmable
Multifunctional
GSM 3G Telecare
GSM 3G Telehealth
In The Worldwide!

T3



User Manual

Ver 1.1

Date Issued: 2015-06-01

All rights reserved.

King Pigeon Communcation Co.,Ltd

T3 --- GSM 3G Senior Telecare ---GSM 3G Elderly Care Alarm System

Table of contents

1.Product details	3
2.Safety Directions	4
3.Product Schematic	5
4.Setting by PC software	7
5.Setting/Operating by SMS commands	14
6.Add wireless sensors	15
7.Hot T3 works for elderly?	16
8.Warranty	17

This handbook has been designed as a guide to the installation and operation of K3 Panel. Statements contained in the handbook are general guidelines only and in no way are designed to supersede the instructions contained with other products.

We recommend that the advice of a registered electrician be sought before any Installation work commences. The manufacturer, its employees and distributors, accept no liability for any loss or damage including consequential damage due to reliance on any material contained in this handbook.

The manufacturer, its employees and distributors, accept no liability for GSM Network upgrading or SIMCard upgrading due to the technology specifications contained in this handbook.

General SMS Command List

SMS COMMAND	Functions & Actions
AA	To arm the T3, in this mode, any detector triggered will alarm.
BB	To disarm the T3, in this mode, detector triggered will not alarm.
CC	To switch ON the Siren output.
DD	To switch OFF the Siren output
EE	Inquiry the T3 Status and GSM Module IMEI Code.

*The commands should plus Password, the format is Password+SMS Command.

i.e.: default operate password is 1234, then you can send **1234AA** to arm, **1234BB** to disarm.

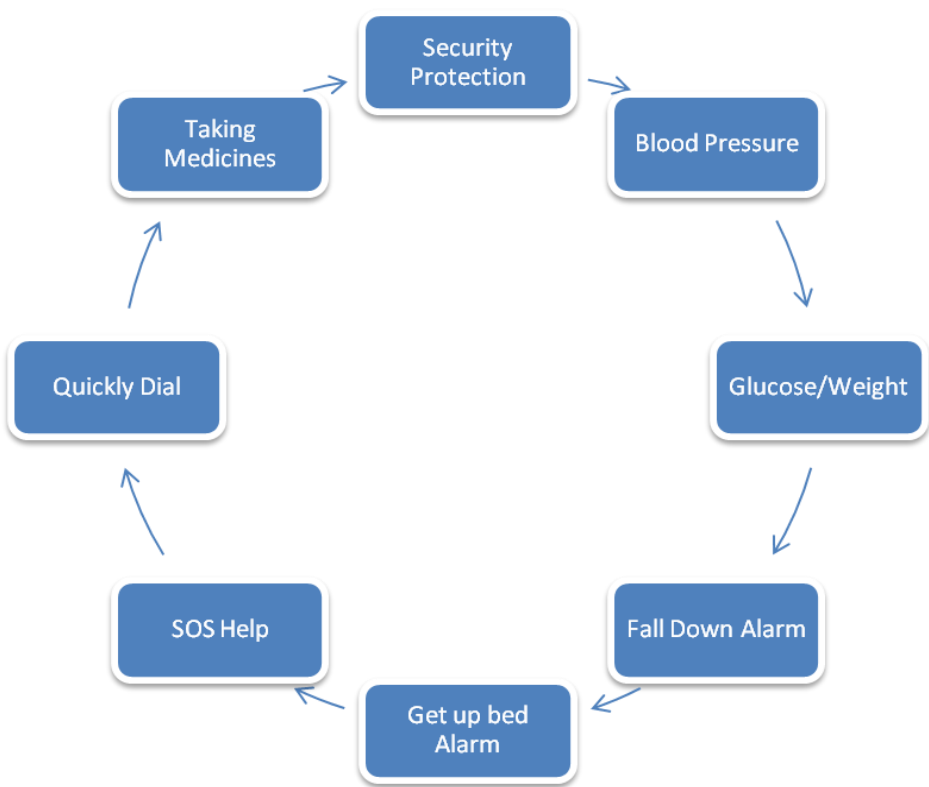
* The command body AA, BB, CC, DD, EE, etc must be Caps Lock.

T3 --- GSM 3G Senior Telecare ---GSM 3G Elderly Care Alarm System

1. Product details

GSM 3G Senior Helper T3 is an innovation solution of telecare and telehealth that special for the senior, elderly, aged people who live independently.

The GSM 3G Senior HelperT3 can be used as safety protection, temperature monitoring, action monitoring, bedtime monitoring, fall alarm and emergency call system, away stay home monitoring and normal telephone.



It equips 4 fast dial(speed dial) buttons, which can paste large photo on the buttons, these buttons can be used as Police, Relatives, Taxi, Fire, Doctor, Neighbor or others for fast dial out. Just Press then can dial out, so easy!

The GSM 3G Senior HelperT3 can be used as a telecare system, it can report the elderly daily actions. Includes elderly away/back home time, remind to take medicine, go to sleep and get up time, if not get up in time then can generate alarm over GSM or GPRS or dial the preset numbers.

The GSM 3G Senior HelperT3 can be used as a telehealth unit, it inbuilt blood pressure meter or external blood pressure meter, press one key then can measure the blood pressure and send out over GPRS or SMS or 3G.

Moreover, it can be used as a wireless Alarm system. it supports wireless SOS button, wireless fall detectors, wireless carbon monoxide detector, wireless gas leakage detector, wireless water leakage detector, wireless smoke detector, wireless motion detectors and so on. Once the wireless detectors activated, it will generate alarm over SMS or GPRS or or 3G or dial out immediately. All of these wireless detectors can provide the safety protections to the senior, elderly, aged people who live independently.

The GSM 3G Senior HelperT3 also inbuilt one sensitive thermometer, it can measure the home temperature.

T3 --- GSM 3G Senior Telecare

---GSM 3G Elderly Care Alarm System

1.1 Features:

- Brevity,Fashion,Neat design;
- Fashion hand free design, large keyboard;
- Large LCD display current time, temperature, and alarm types;
- GSM SMS/GPRS/3G Transmission, no distance limitation;
- Bedtime monitoring, if not get up in time can generate alarm;
- Away/Back home time monitoring;
- Daily activities monitoring;
- Supports variety wireless detectors, includes wireless fall detector, wireless CO detector, wireless smoke detectors and so on;
- Equips 4 fast dial numbers, and also can dial other numbers by keyboard if required;
- 3-Timer for alerting to take medicine.
- Backup rechargeable battery.
- Wireless transmit the information over GPRS or 3G network to server or apps.

Setting

- PC Software programming;

1.2 Specifications

GSM Frequency	Quad-band 850/900/1800/1900MHz
3G Band	900/2100MHz default (T3W) 850/1900MHz optional* (T3C)
Wireless zones	32
Wireless Frequency	433.92MHz
Wireless distance	Max.100m in open air
Siren Output	12VDC/1A
DC Power supply	9~24VDC/1A
Power consumption	12V input Max. 50mA/Average 25mA
SIM Card	Supporting 3V SIM Card
Antenna	50 Ω SMA Antenna interface
Temperature range	-20~+60 °C
Humidity range	Relative humidity 90%
Backup battery	3.7V/900mAH
Exterior dimension	22*17*6 cm (8.7*6.7*2.4 inch)
Net Weight	710 g (1.5 lb)

Order Table:

T3: GSM 850/900/1800/1900MHz
T3W: 2G: GSM900/1800MHz,
3G WCDMA : 900/2100MHz UMTS ;
T3C: 2G: GSM850/900/1800/1900MHz,
3G: 850/1900MHz UMTS.

1.3. Standard Packing List

- ✓ Main unit * 1
- ✓ Wireless fall down detector *1
- ✓ Cuff for measure blood pressure *1
- ✓ AC/DC Power adaptor *1,
- ✓ User Manual & PC Software CD x1
- ✓ Packing size: 23.5*18*9.5 cm (9.3*7*3.7 inch)
- ✓ Gross Weight: 1.10 kg (2.4 lb)

1.4 Applications

- **Residential:** Home security alarm, elderly living monitoring.
- **Business:** Aging care, telecare, healthcare,etc.

Optional Accessories:

- ✓ PIR Motion Sensor,
- ✓ Glass Break Sensor,
- ✓ Magnetic Window Sensor,
- ✓ Temperature Sensor,
- ✓ Infrared Beam Fence,
- ✓ Vibration sensor,wireless siren..

T3 --- GSM 3G Senior Telecare ---GSM 3G Elderly Care Alarm System

2. Safety Directions



Safe Startup
Do not use T3 when using GSM equipment is prohibited or might bring disturbance or danger.



Interference
All wireless equipment might interfere network signals of T3 and influence its performance.



Avoid Use at Gas Station
Do not use T3 at a gas station. Power off T3 when it near fuels or chemicals.



Power it off near Blasting Places
Please follow relevant restrictive regulations. Avoid using the device in blasting places.



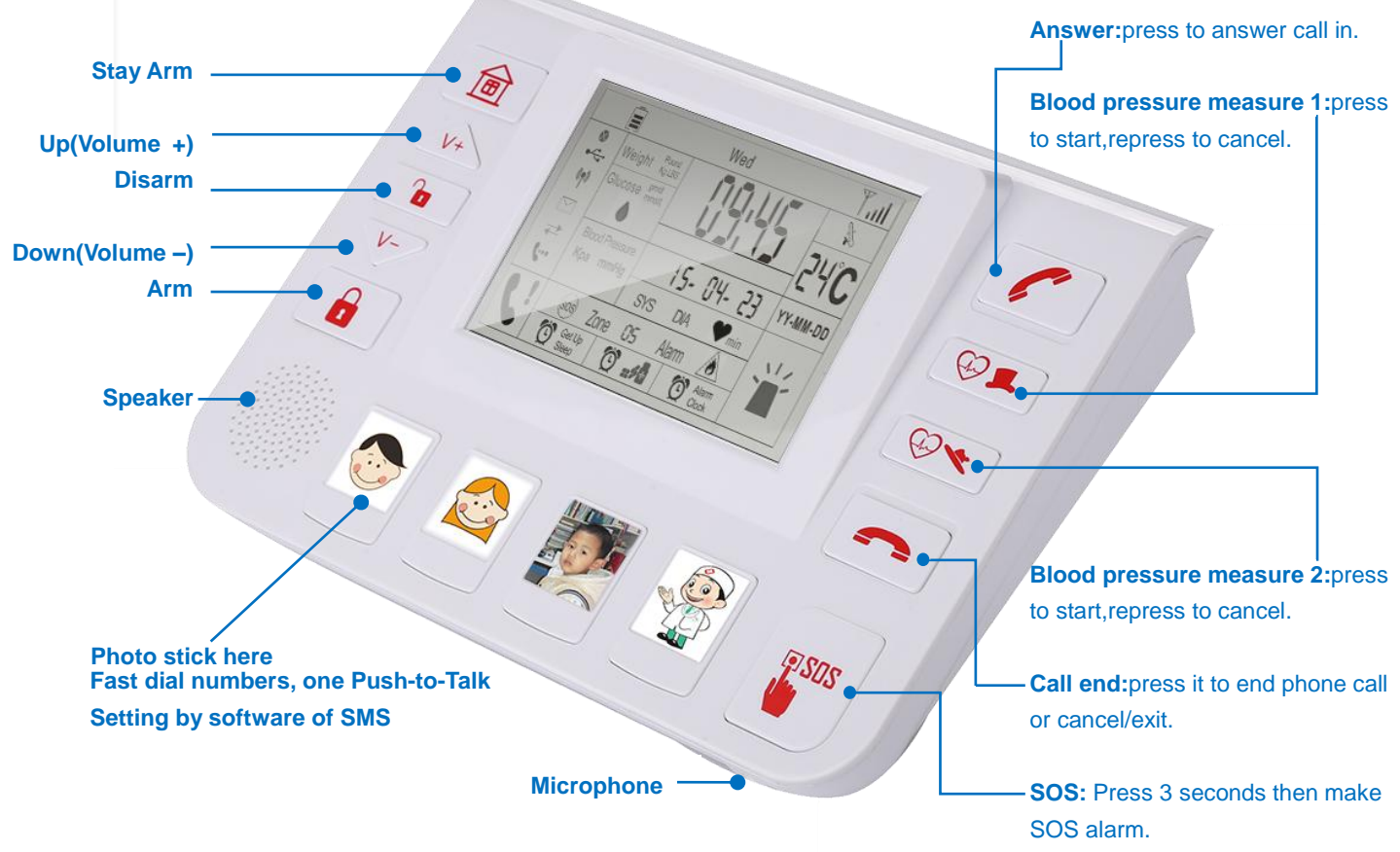
Reasonable Use
Please install the product at suitable places as described in the product documentation. Avoid signal shielded by covering the mainframe.



Use Qualified Maintenance Service
Maintenance can be carried out only by qualified maintainer.

3. Products schematic

Front view

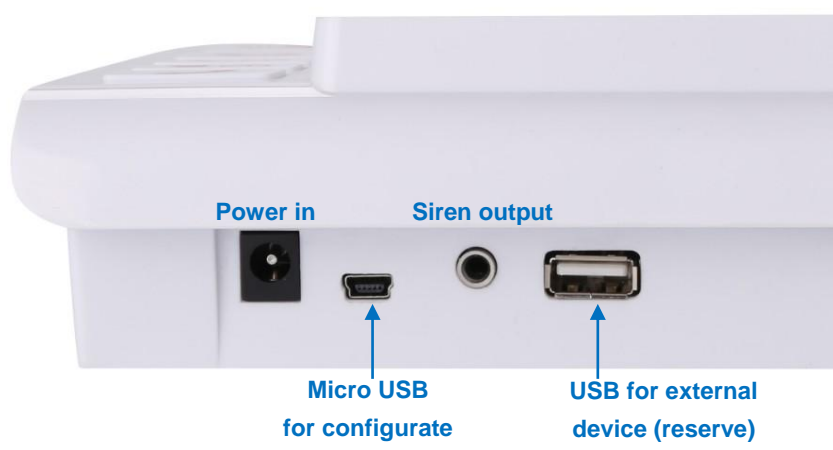


T3 --- GSM 3G Senior Telecare ---GSM 3G Elderly Care Alarm System

LCD Display

		Wed			
 	Weight	Pound Kg LBS	09:45		 24°C
	Glucose	gm/dl mmol/L			
	Blood Pressure	Kpa mmHg	15- 04- 23		YY-MM-DD
	(SOS) Zone 05 Alarm		min		
	Get Up Sleep		Alarm Clock		

Back side



T3 --- GSM 3G Senior Telecare ---GSM 3G Elderly Care Alarm System

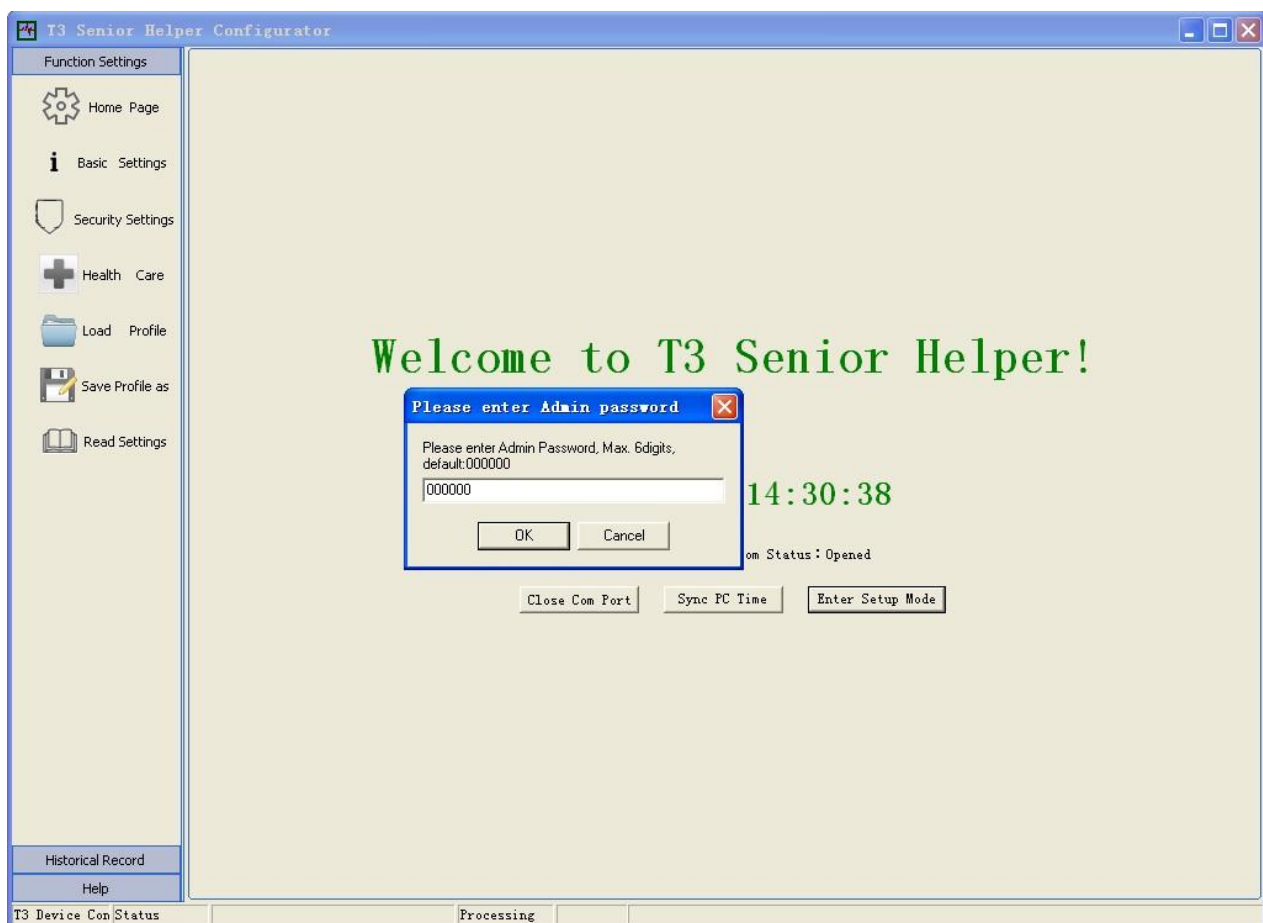
4. Installation and Setting by PC software:

- 1) Open the unit's back side cover and insert the SIM card.
- 2) Connect the unit's power supply, Cuff for measure blood pressure ,siren(if needed),and USB cable to PC.
- 3) Switch ON the main unit.
- 4) On computer's desktop,right click "My Computer" >>> "Property" >>>"Hardware" >>"Device Manager".
- 5) Find "Ports (COM & LPT)",check the port number of "Silicon Labs CP210x USBto UART Bridge", for example:COM3. ([Click here](#) to know *how to find out the COM Port on your computer*)
- 6) Run this configurate software,select the COM Port number,for example:COM3.click"Open Com Port", Click " Enter Setup Mode ",default password is 000000. Fill the new password if you had changed before,then click "OK".
- 7) Click "Read Settings". Configure the parameters as per you need.
- 8) After finished configrate, Click "Save Settings", configurate finished.

Log in

Steps: Select the COM port>>>Open Com Port>>>Sync PC Time >>>Enter Setup Mode>>>Password verify>>>OK.

(Default password:000000)



T3 --- GSM 3G Senior Telecare ---GSM 3G Elderly Care Alarm System

Password

T3 Senior Helper Configurator

Function Settings: Home Page, Basic Settings, Security Settings, Health Care, Load Profile, Save Profile as, Read Settings, Save Settings, Factory Default

Historical Record, Help

T3 Device Con Status: Processing

Password Settings

Device ID: 1111111111
Module IMEI: 865328028234705
Device Version: Remv1401

Enter New User Password: (4Digits) [Save]
Re-enter New User Password:

Enter New Admin Password: (6Digits) [Save]
Re-enter New Admin Password:

Old Simcard PIN Code: []
New Simcard PIN Code: []

The password is for remote control the T3 unit.
Admin password is for configurate theT3 unit.
Leave it blank if no PIN code on your SIM Card.

SIM Card & Alarm numbers

T3 Senior Helper Configurator

Function Settings: Home Page, Basic Settings, Security Settings, Health Care, Load Profile, Save Profile as, Read Settings, Save Settings, Factory Default

Historical Record, Help

T3 Device Con Status: Processing

Alarm Numbers

Basic Setting
Device ID: 0001503 T3 Simcard Number: 008618670286485 Correction time by SMS automatically

When External DC Loss more than 30 minutes then send SMS to Alarm Telephones. Send Daily Report by SMS at Hour 18 Minute 30

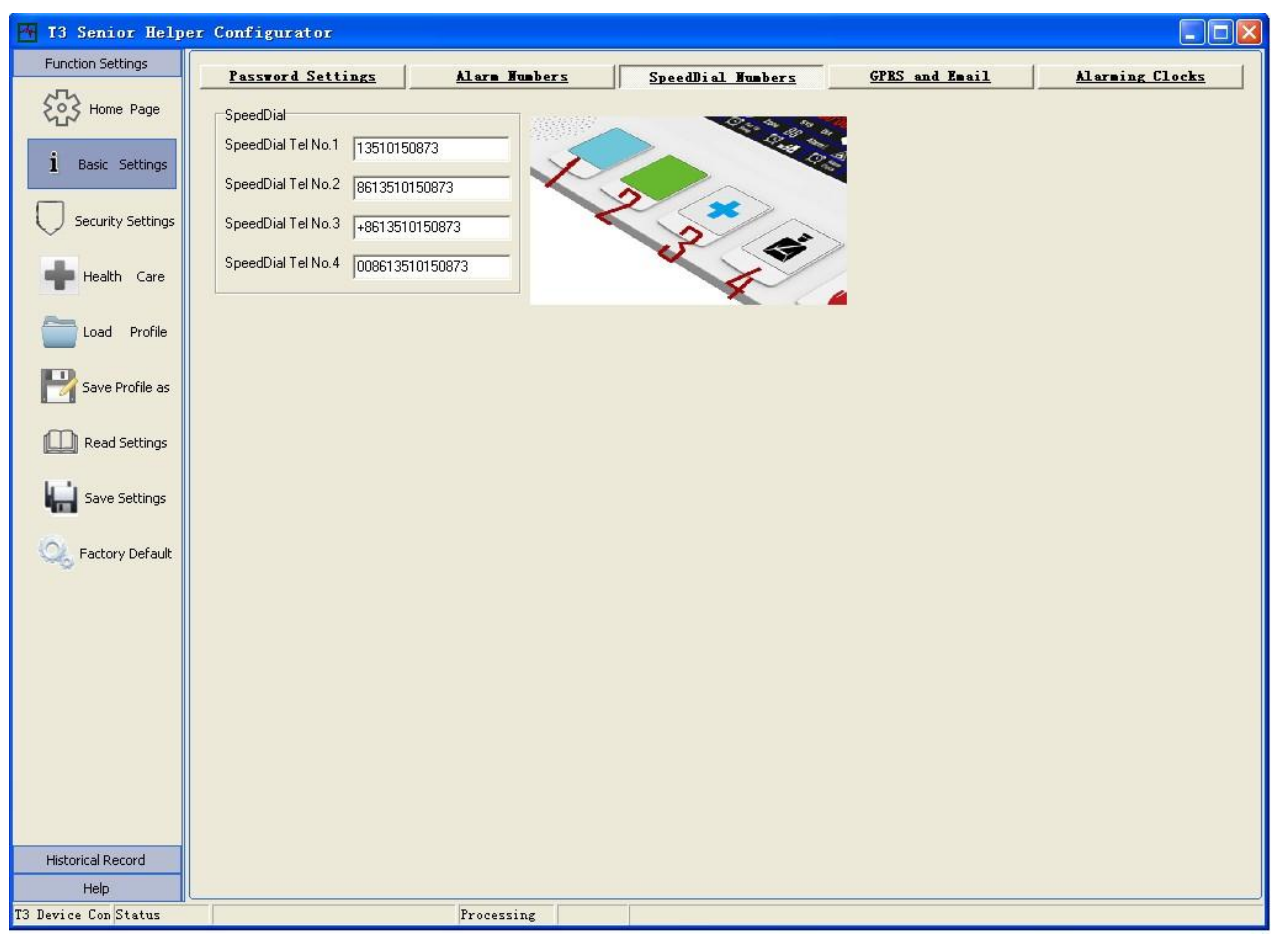
10 Alarm Telephone Numbers

Serial Number	Alarm Receiver Telephone Number	Alarm Dial	Alarm SMS	Daily Threshold SMS	Threshold SMS	Armed Dial	Armed SMS	DC Loss SMS	Sensor Low Voltage	GPRS SMS Fail	Measured Values Alert by SMS
Tel No. 1	008613510150873	<input checked="" type="checkbox"/>	<input checked="" type="checkbox"/>	<input checked="" type="checkbox"/>	<input checked="" type="checkbox"/>	<input checked="" type="checkbox"/>	<input checked="" type="checkbox"/>	<input checked="" type="checkbox"/>	<input checked="" type="checkbox"/>	<input checked="" type="checkbox"/>	<input checked="" type="checkbox"/>
Tel No. 2	+8613510150000	<input type="checkbox"/>	<input checked="" type="checkbox"/>	<input type="checkbox"/>	<input type="checkbox"/>	<input type="checkbox"/>	<input type="checkbox"/>	<input type="checkbox"/>	<input type="checkbox"/>	<input type="checkbox"/>	<input type="checkbox"/>
Tel No. 3	8613510150001	<input type="checkbox"/>	<input checked="" type="checkbox"/>	<input type="checkbox"/>	<input type="checkbox"/>	<input type="checkbox"/>	<input type="checkbox"/>	<input type="checkbox"/>	<input type="checkbox"/>	<input type="checkbox"/>	<input type="checkbox"/>
Tel No. 4	13510150002	<input type="checkbox"/>	<input checked="" type="checkbox"/>	<input type="checkbox"/>	<input type="checkbox"/>	<input type="checkbox"/>	<input type="checkbox"/>	<input type="checkbox"/>	<input type="checkbox"/>	<input type="checkbox"/>	<input type="checkbox"/>
Tel No. 5		<input type="checkbox"/>	<input type="checkbox"/>	<input type="checkbox"/>	<input type="checkbox"/>	<input type="checkbox"/>	<input type="checkbox"/>	<input type="checkbox"/>	<input type="checkbox"/>	<input type="checkbox"/>	<input type="checkbox"/>
Tel No. 6		<input type="checkbox"/>	<input type="checkbox"/>	<input type="checkbox"/>	<input type="checkbox"/>	<input type="checkbox"/>	<input type="checkbox"/>	<input type="checkbox"/>	<input type="checkbox"/>	<input type="checkbox"/>	<input type="checkbox"/>
Tel No. 7		<input type="checkbox"/>	<input type="checkbox"/>	<input type="checkbox"/>	<input type="checkbox"/>	<input type="checkbox"/>	<input type="checkbox"/>	<input type="checkbox"/>	<input type="checkbox"/>	<input type="checkbox"/>	<input type="checkbox"/>
Tel No. 8		<input type="checkbox"/>	<input type="checkbox"/>	<input type="checkbox"/>	<input type="checkbox"/>	<input type="checkbox"/>	<input type="checkbox"/>	<input type="checkbox"/>	<input type="checkbox"/>	<input type="checkbox"/>	<input type="checkbox"/>
Tel No. 9		<input type="checkbox"/>	<input type="checkbox"/>	<input type="checkbox"/>	<input type="checkbox"/>	<input type="checkbox"/>	<input type="checkbox"/>	<input type="checkbox"/>	<input type="checkbox"/>	<input type="checkbox"/>	<input type="checkbox"/>
Tel No. 10		<input type="checkbox"/>	<input type="checkbox"/>	<input type="checkbox"/>	<input type="checkbox"/>	<input type="checkbox"/>	<input type="checkbox"/>	<input type="checkbox"/>	<input type="checkbox"/>	<input type="checkbox"/>	<input type="checkbox"/>

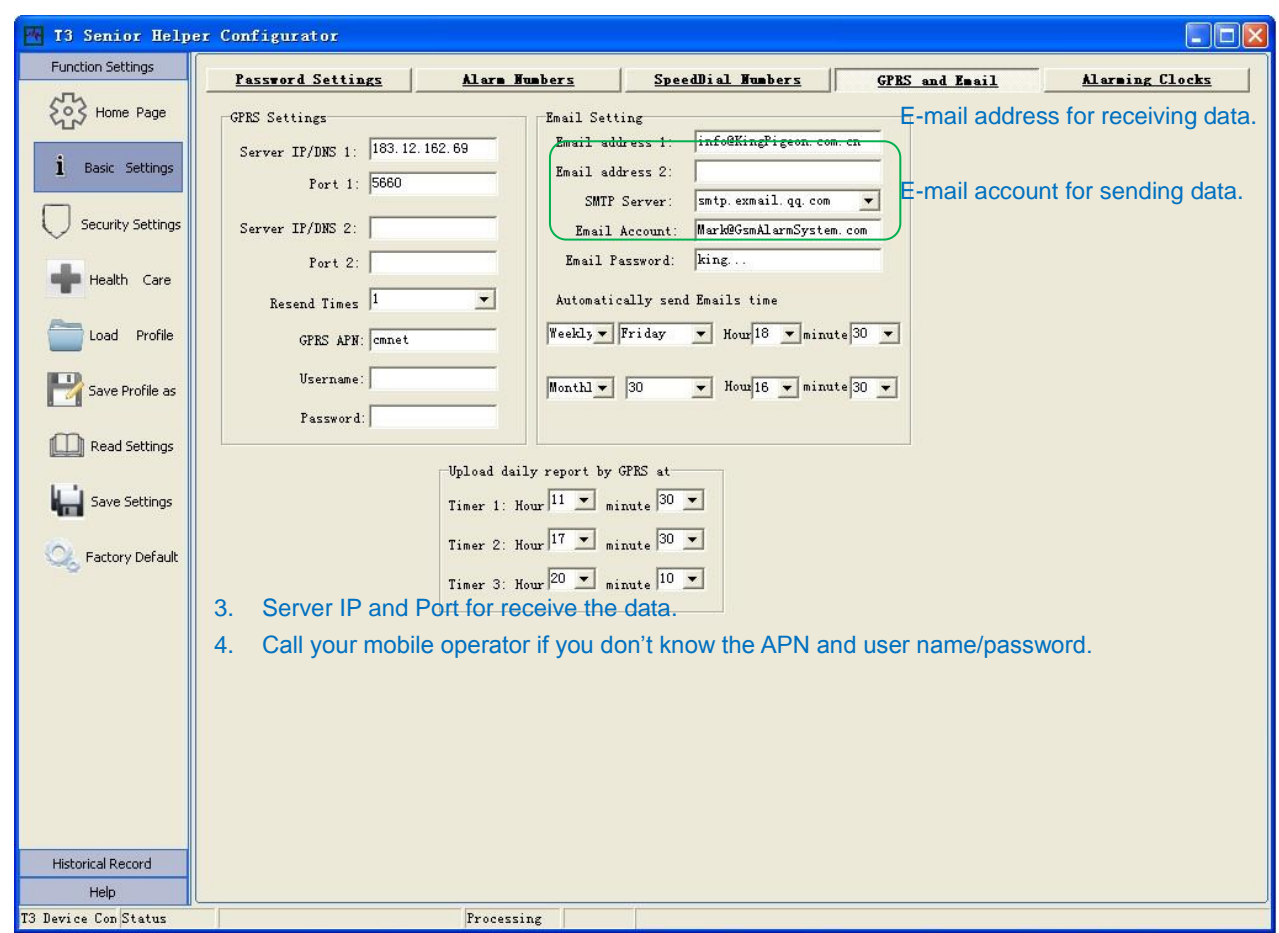
1. The T3's SIM Card number is important.
2. If you can't receive the alert SMS or correct time from T3, please change the country code format, for example: use 0086 instead of +86 or 86. Refer to the **Alarm number settings**.

T3 --- GSM 3G Senior Telecare ---GSM 3G Elderly Care Alarm System

Fast dial numbers

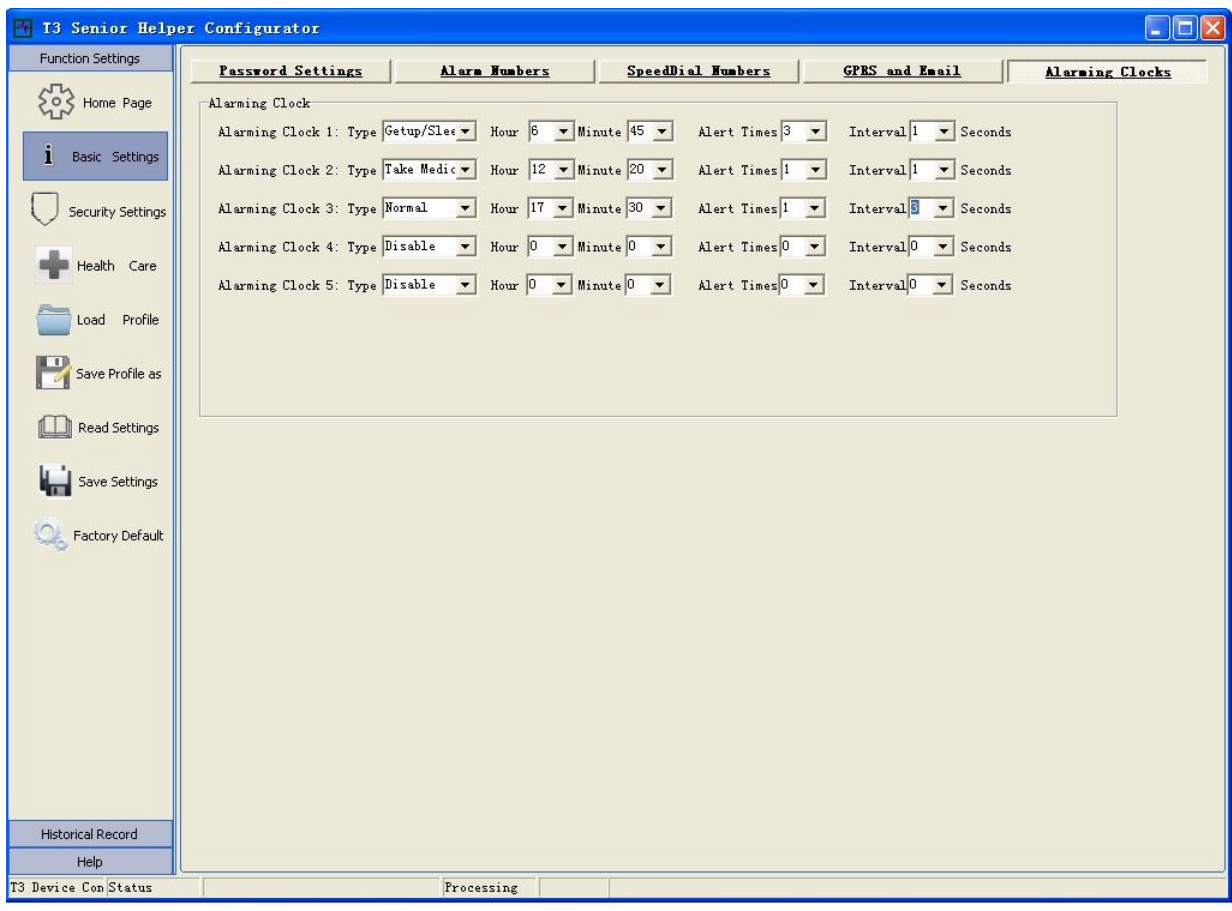


GPRS & E-mail

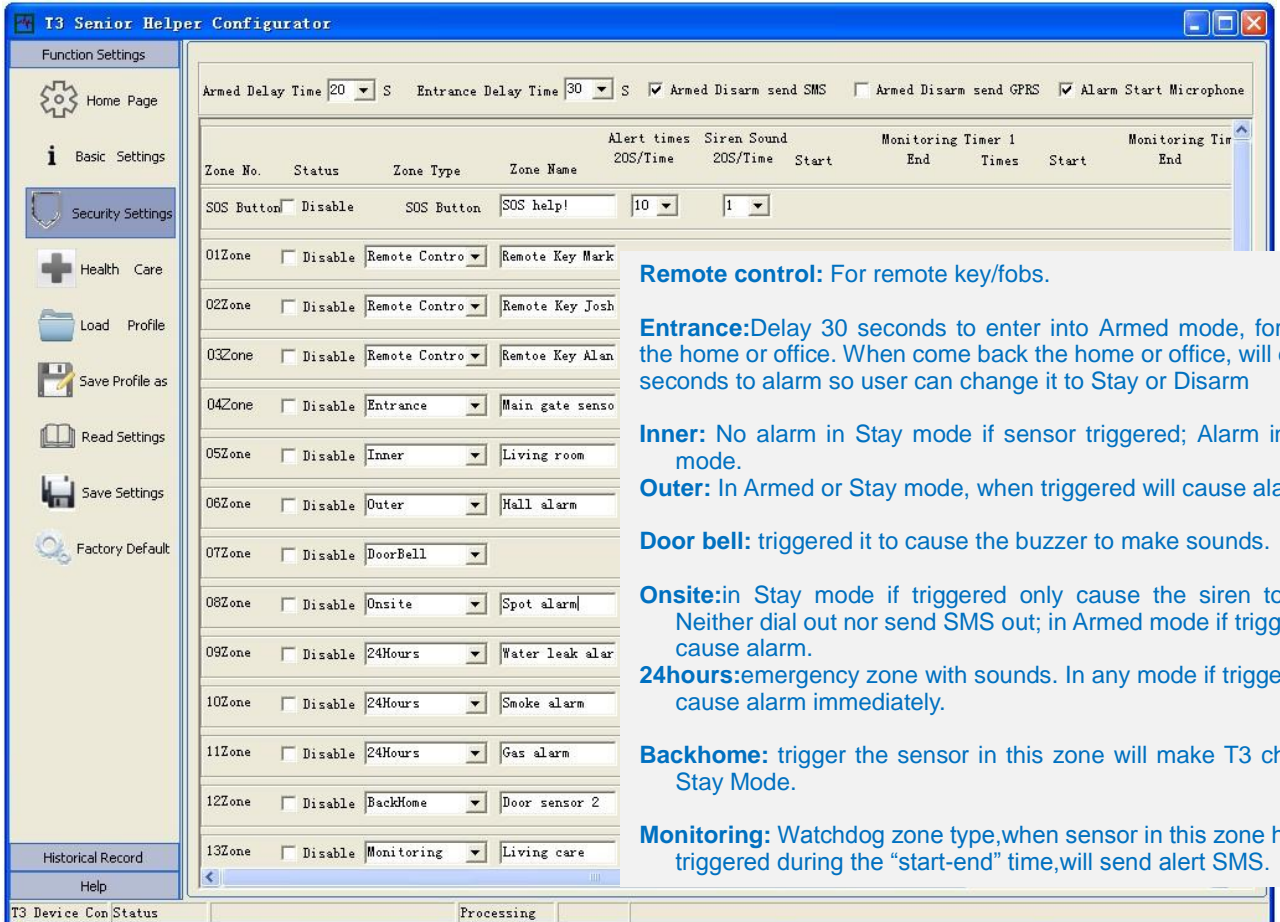


T3 --- GSM 3G Senior Telecare ---GSM 3G Elderly Care Alarm System

Alarm Clocks

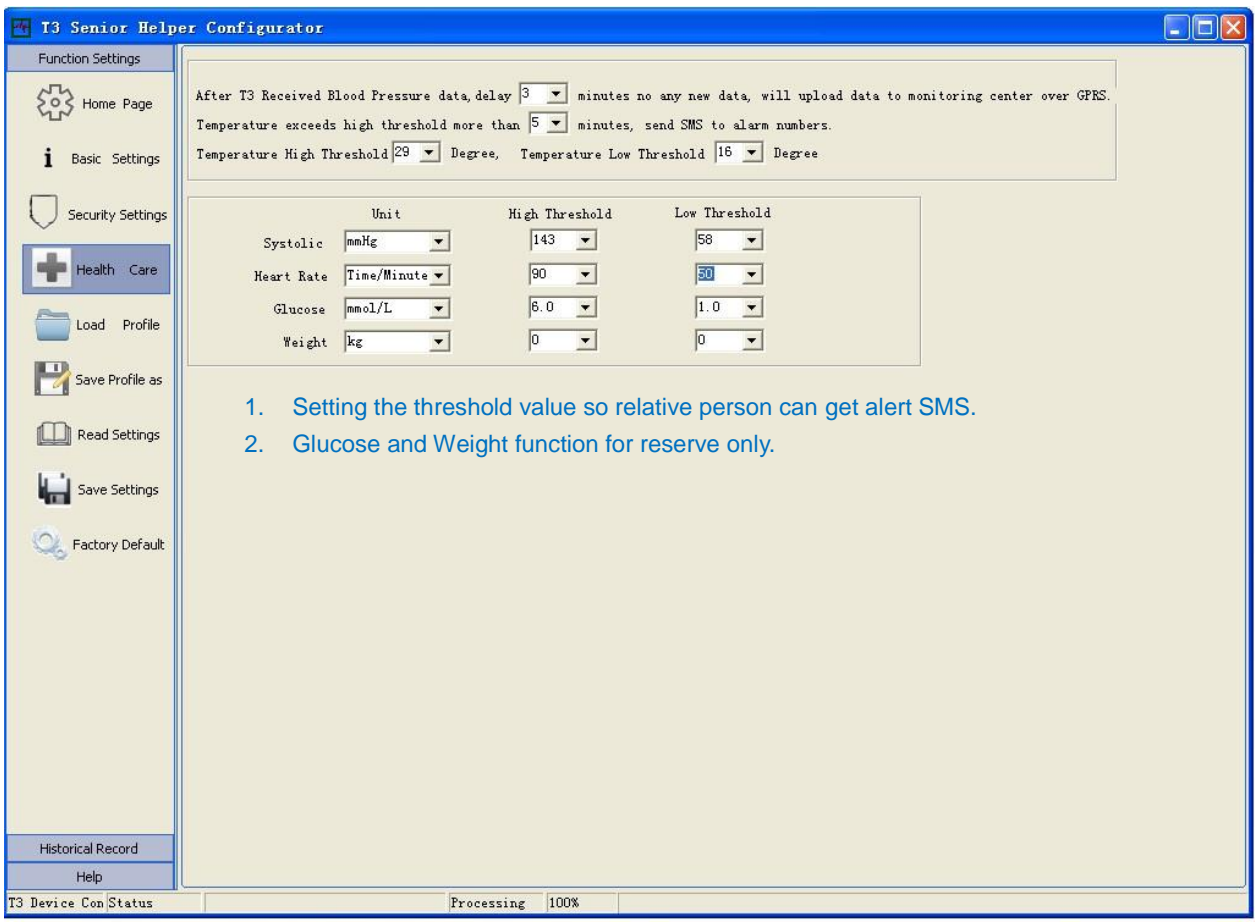


Alarm zones and attributes

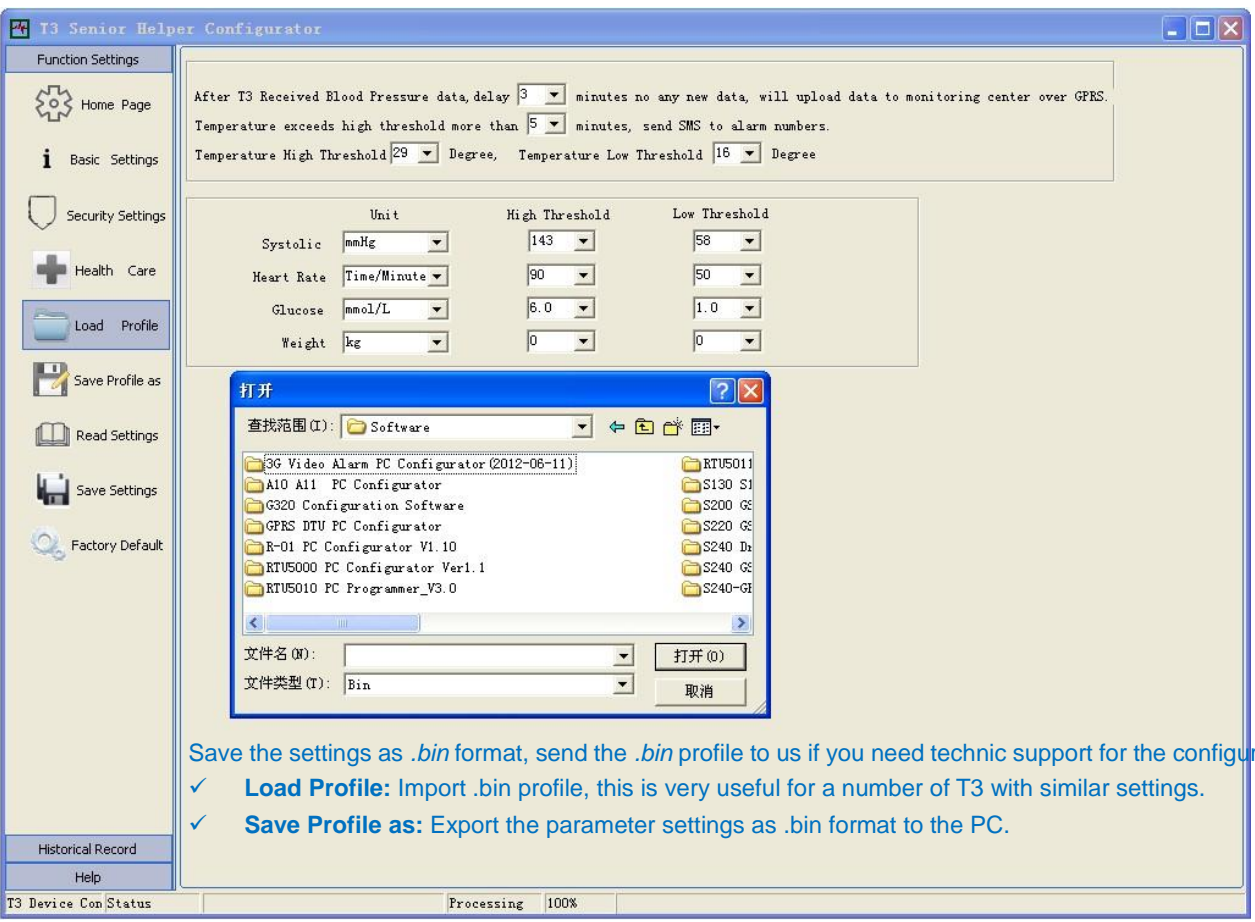


T3 --- GSM 3G Senior Telecare ---GSM 3G Elderly Care Alarm System

Health Care Alarm



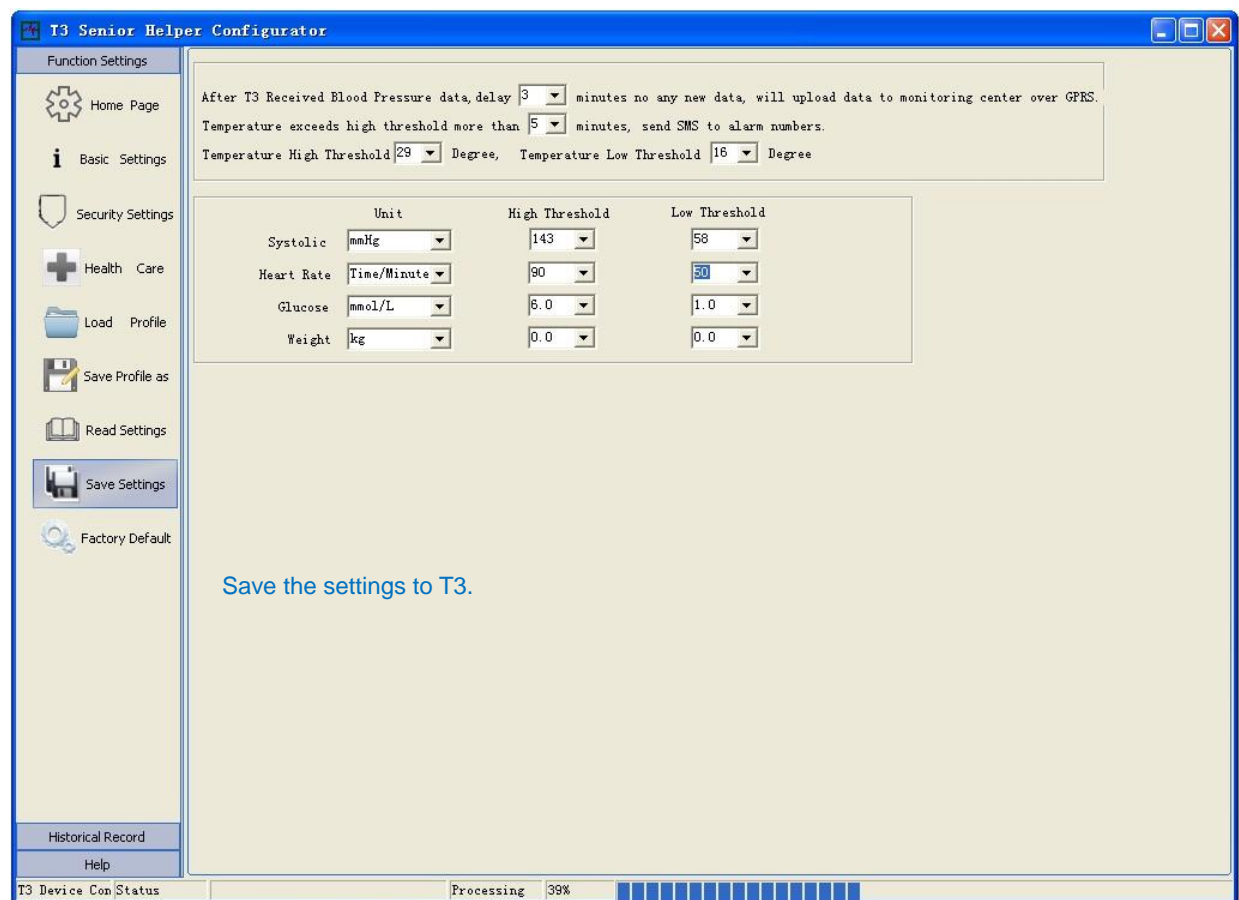
Load/Save profile



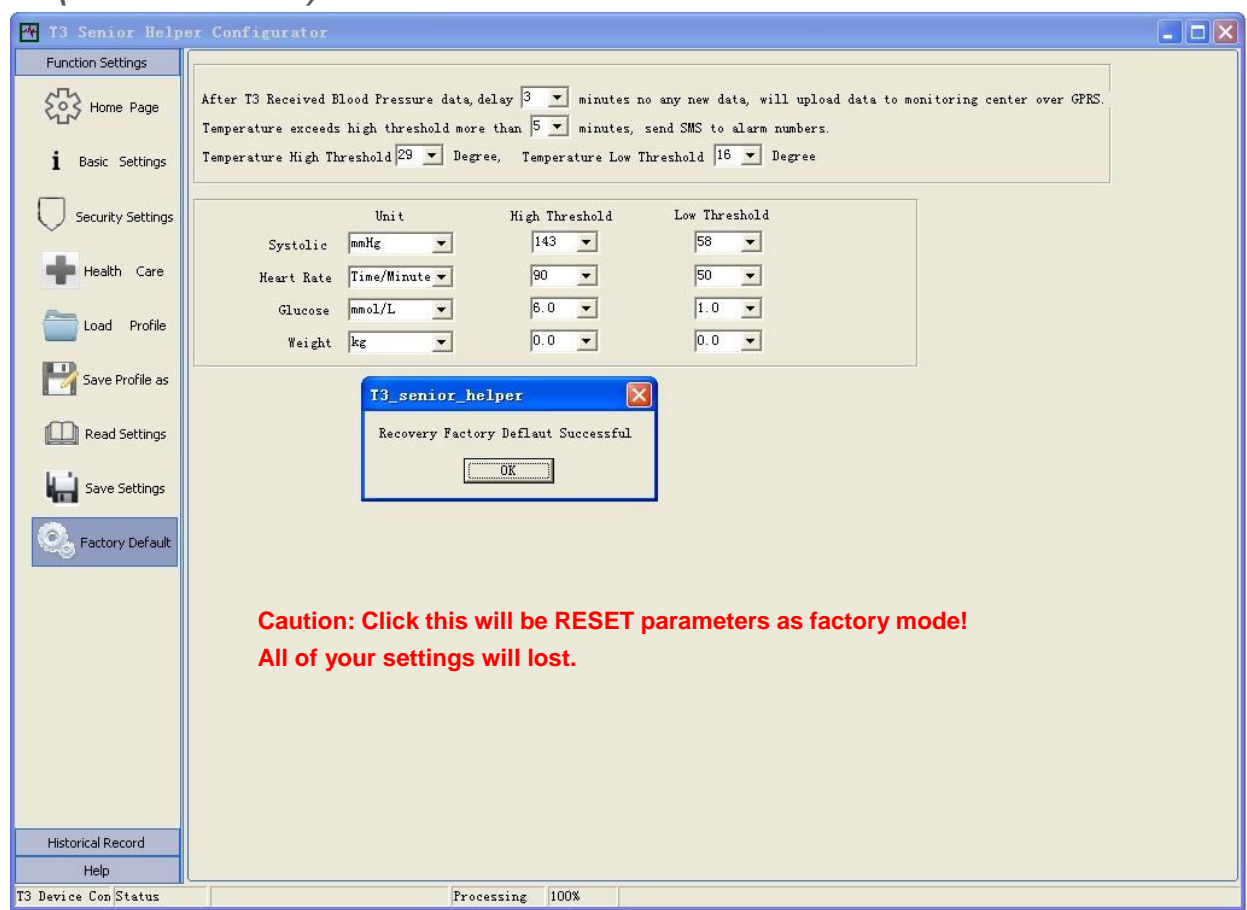
- Save the settings as .bin format, send the .bin profile to us if you need technic support for the configuration.
- ✓ **Load Profile:** Import .bin profile, this is very useful for a number of T3 with similar settings.
 - ✓ **Save Profile as:** Export the parameter settings as .bin format to the PC.

T3 --- GSM 3G Senior Telecare ---GSM 3G Elderly Care Alarm System

Save Settings

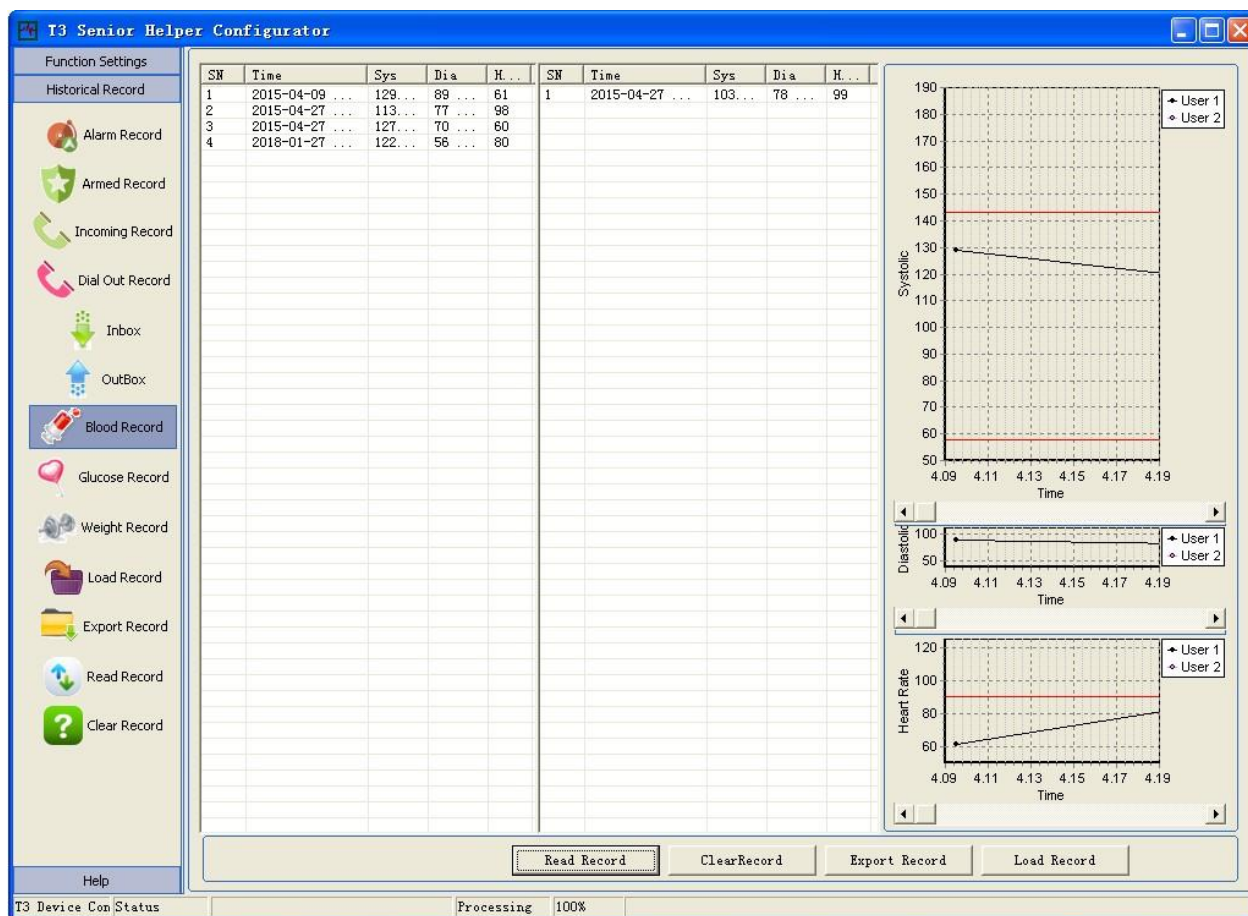


RESET (Caution to click)



T3 --- GSM 3G Senior Telecare ---GSM 3G Elderly Care Alarm System

Historical Record



- ✓ **Alarm record:** Read the alarm records from T3 to the PC software.
- ✓ **Arm record:** Read the arm records from T3 to the PC software.
- ✓ **Incoming record:** Read the incoming call records from T3 to the PC software.
- ✓ **Dial Out record:** Read the dial out records from T3 to the PC software.
- ✓ **Inbox:** Read the inbox SMS.
- ✓ **Outbox:** Read the outbox SMS.
- ✓ **Dial Out record:** Read the dial out records from T3 to the PC software.
- ✓ **Blood record:** Read the Blood pressure records from T3 to the PC software.
- ✓ **Glucose record:** Reserve function.
- ✓ **Weight record:** Reserve function.
- ✓ **Load record:** Read the historical data profile from PC folder to the software.
- ✓ **Export record:** Export the historical data to the PC.
- ✓ **Read record:** Read all of the historical data from T3 to the software.
- ✓ **Clear record:** Click this button will **delete/erase all of the historical data on the T3 unit (Caution to use!)**

T3 --- GSM 3G Senior Telecare

---GSM 3G Elderly Care Alarm System

5. Setting & Operation by SMS commands:

Quick operation & Inquiry (1234--default password,change it to your new password if modified)			
S.N.	Function Description	SMS Command Format	Example (Default Pwd: 1234)
1	Arm(Away)	1234AA	1234AA
2	Disarm	1234BB	1234BB
3	Stay	1234CC	1234CC
4	Inquiry current status,GSM Signal, IMEI	1234EE	1234EE
5-1	Inquiry the last alarm record	1234E1	1234E1
5-2	Inquiry the last arm record	1234E2	1234E2
5-3	Inquiry the last incoming call record	1234E3	1234E3
5-4	Inquiry the last dial out record	1234E4	1234E4
5-5	Inquiry the last SMS of inbox	1234E5	1234E5
5-6	Inquiry the last SMS of outbox	1234E6	1234E6
5-7	Inquiry the last blood presure data	1234E7	1234E7
5-8	Inquiry the last Glucose data (reserve)	1234E8	1234E8
5-9	Inquiry the last Weight data (reserve)	1234E9	1234E9
Settings			
6	Setup operator's New Password	1234PUnew password#	1234PU6666
7	Setting current date&time	1234Tyyymmddhhmm	1234T1504251945 (19:45, April 25,2015)
Fast dial number			
8	Setting fast dial number	1234Aserial numberTphone number	1234A1T00861351000 (The 1 st speed number: 00861351000)
9	Inquiry fast dial number	1234A	1234A
10	Delete fast dial number	1234Aserial number	1234A1
Adminstration settings(default password: 000000)			
Alarm Clocks			
11	Setting alarm clock	000000C serial number HHMM type(1:get up/sleep;2: medicine;3:others)repeat time interval time	000000C20930223 (The 2 nd alarm clock at 09:30am,for medicine purpose,make alarm twice every 3 seonds.)
12	Inquiry alarm clock setting	000000C	
13	Delete alarm clock	000000Cserial number	000000C2
Alarm Numbers			
14	Setting Alarm Numbers	000000B serial number T phone number	000000B8T008613510150873 (The 8 th alarm number: 008613510150873)
15	Inquiry Alarm Numbers	000000B	000000B
	Delete Alarm Number	000000B serial number	000000B2
Wireless alarm zone name			
16	Modify alarm zone's name	000000M Zone number Zone name	000000M3door alarm!
Administration Commands (For engineering only)			
17	Setting new adminstration password	000000PAnew password	000000PA952700
18	Connect GPRS(make GPRS online)	000000GON	Auto disconnect GPRS if no data Tx/Rx in 10mins
19	Disconnect GPRS(make GPRS offline)	000000GOFF	
20	Setting Server IP and port	000000IP IP address P port number	000000IP113.92.179.97P4006
21	Setting GPRS upload time (daily report)	000000D hh mm	000000D1730
22	Disable GPRS upload (daily report)	000000D	

T3 --- GSM 3G Senior Telecare ---GSM 3G Elderly Care Alarm System

6.Add wireless sensors

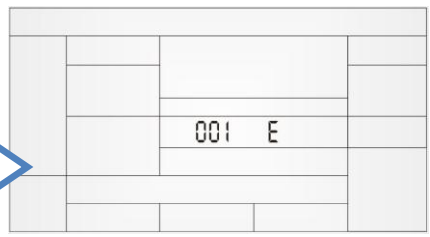
① Press 



② Switch ON T3





③ LCD display: 001 E



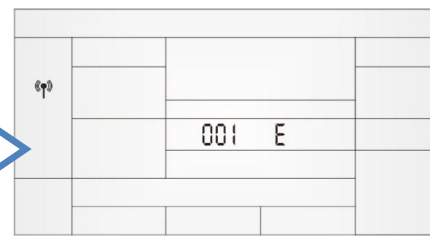
"E"—no sensor added on this zone
"d"—sensor added on this zone already



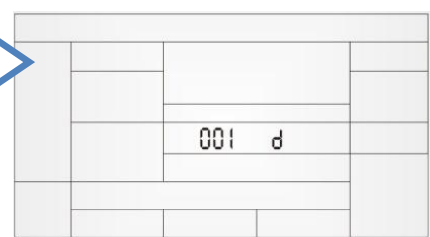
④ Select zone(01~32) :  




⑤ Trigger the sensor, LCD display




⑥ Press , LCD display



("d"—sensor added on this zone already)

Delete wireless sensor: After step 4,press  more than 2 seconds.

Exit: press , or exit "add wireless sensors" mode automatically if no action more than 2 mins.

T3 --- GSM 3G Senior Telecare ---GSM 3G Elderly Care Alarm System

7. How T3 works for elderly?

Push-to-Talk





Stick a easy recognized photo on the buttons, just push these buttons then make a phone call with families or ask for help.

SOS alarm when under emergency situation




Push the SOS button for 3 seconds,T3 will send SOS alert SMS text and make a phone call to receivers for asking emergency help.
Other Wireless SOS button or fall detectors optional.

Answering phone call

Press  for answer the call in, press  for end calls.



Heath care (Blood pressure measurement)

Press  and wear the sphygmomanometer to measure the blood pressure and heart rate, records will save on the T3's memory for download by PC software or upload to CMS or other could server system, relatives can get alert SMS text when the measurement value higher/lower than pre-set threshold too.


24hours safety guard

When smoke,gas,CO or water flood detected,T3 will make audible alarm,send alert SMS text and call to the receivers/CMS.

24hours house security alarm

On   status,T3 make audible alarm and send alert SMS text & call when intrusion sensor triggered.

Alarm clocks

T3 will make audible alarm and flash on LCD according to the timing setting.Alarm audio can be stopped by end button .

Audio volume can be adjust by  and  . (the same volume for phone call, alarm too).

T3 --- GSM 3G Senior Telecare ---GSM 3G Elderly Care Alarm System

Daily life care

T3 will send alert SMS text if no activities detected by PIR/Door sensors during the watchdog time period.

For example,install one door contact sensor on the main gate,setting time period at 16:00~18:00pm,if the main gate not opened during that time,T3 can send alert SMS to receivers.

Temperature monitoring

T3 send alert SMS text to receivers when temperature higher/lower than threshold more than 10mins.

Other care

T3 will send alert SMS text when AC/DC power lost and recovery immediately, back up battery low power,wireless sensor's battery low power(if have).

8. Warranty

- 1) This system is warranted to be free of defects in material and workmanship for one year.
- 2) This warranty does not extend to any defect, malfunction or failure caused by abuse or misuse by the Operating Instructions. In no event shall the manufacturer be liable for any alarm system altered by purchasers.

www.GsmAlarmSystem.com