

WT-1672A2
DOUBLE CIRCUITS POWER OUTAGE ALARM
USER MANUAL



Overviews

Power Outage Alarm is a simple to detect loss of power (power cuts). Once power loss is detected, the unit will call and SMS text messages to your cell phone via the mobile phone network. The unit can call and SMS text messages to 5 designated phone number and/or sound an audible alert to make you aware of the power failure.

The WT-1672A2 can detect two power circuit respectively, in two different area of electrical powers, either one being interruption, the WT-1672A2 will activate the alarm and sending information to the administrative number , allow users to know the situation in time

The unit also has 1 x 30A heavy duty output can used to switch on any application like lamps, pumps, heater, motor etc. when power resume. Output relay can be switched ON by calling its cell phone number or by sending an SMS command, there is no call charges incurred when dialling the unit as it will recognize an authorised telephone number calling it and reject the call without answering. One call to the SIM Card number will switch the device ON permanently, another call with switch OFF permanently

The unit supply with 1 timer input. This function is important as the reminder to the owner to monitor the SIM Card expiry date. User can set the SIM Card expiry date into the system and when the date overdue, the unit will send SMS to the user to keep SIM Card active and remind the owner for reloads.

The system using CE and FCC approved industry internal power supply connected on board. A backup lithium battery can power up at least 8 hours and will sent a power down or power restored alerts in the event of any circuits power failure

The user also can download the FREE apps from Android and IOS stores as their easy monitoring and control tools. Just one touch on the apps, user smart phone will sent the SMS text commands to the unit. The users don't need to remember the commands code. The power outage warning SMS text messages also will display at the Apps for easy monitoring.

Typical uses include:

- waking you in the event of a power cut;
- fridge monitoring & freezer monitoring;
- fish tank monitoring & aquarium monitoring;
- generator monitoring;
- sump pump monitoring;
- computer equipment monitoring;
- heating system monitoring;
- chemical storage monitoring;
- and other applications.

SETTING UP AND PROGRAMMING

When first booting up the system you will see Blue LED Lights on the side of the Enclosure and it should light up when the Network is applied to the unit.

The Blue LED is the network Indicator and this will light up when attempting to log on to the network flash inconsistently until it locates the network.

A Phone Call to the SIM Card Number will now Latch the Relay permanently ON and Switch the device being Controlled On.

The Status of the Relay will remain as on, until the unit receives a second Call to the Unit of which will now Latch the Relay Permanently off.

Both Calls used to Latch the Relay either on or off are automatically disconnected, once the relays are activated and never incur any Network Call Costs.

Beside calls to switch off or on, the unit also can be permanently switch off and on by sending the unit a text message command

Step 1 - The simplest set up methods to set up Administrator number

Applied the “KISS Principle”, keep it simple, stupid.

The GSM Remote Control Switch is easy to setup and use. Insert the SIM card, simply use your mobile phone call to the unit, your mobile phone number will automatically register as the 1st Administrators

You will receive the following SMS message from the unit –

Administrator:

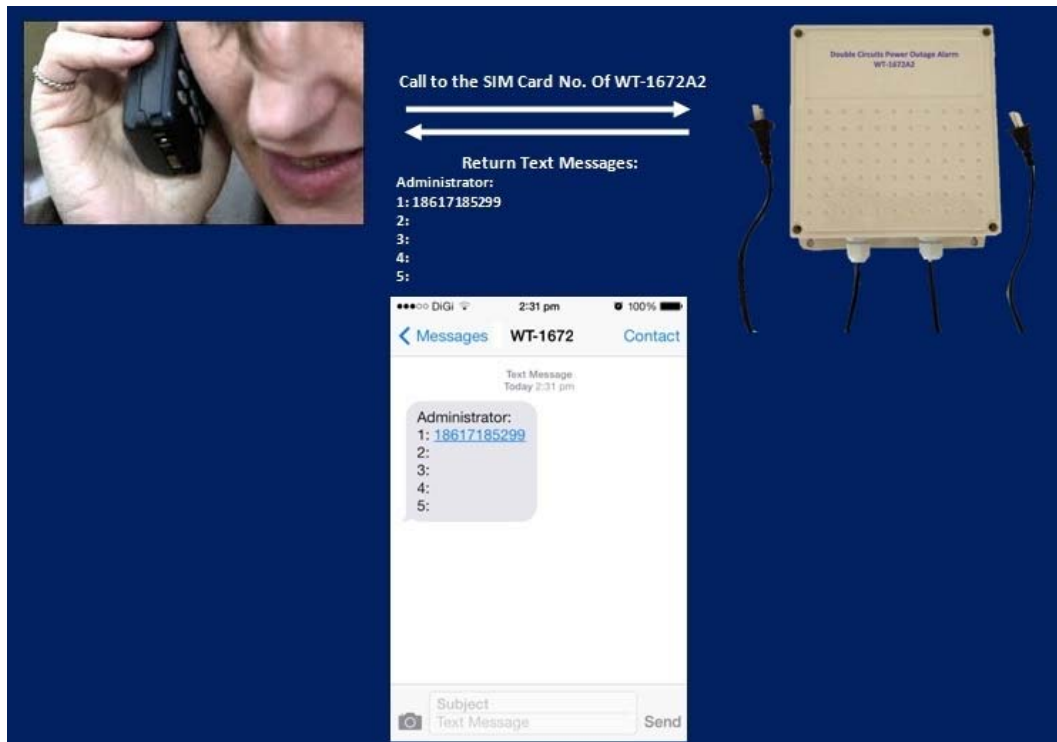
1: 18617185300 (your phone number)

2:

3:

4:

5:



You already finish the set up. Now, you can use your mobile phone call to the SIM Card number switch the device on permanently. Another call to the SIM Card will switch the device off permanently.

If you do not required to go through details setting, please process to STEP3 – Final Installation and Wiring

Factory Reset

If you required to change the administrator number in the future, simply press the button “FACTORY” at the mother board until you hear the “du~” . This means the unit back to the factory default



This means you already reset the unit to factory default. Now you can start to call again to set the administrator.

This method of setting is only allowed to set 1 administrator number. If you wish to set more administrators, please go to Step 3 – Installation and set up

Step 2 - Advance Set Up

NO.	Description	Programming Code	SMS Texts Respond	Function
1	<p>First Step of programming, you must enter the factory passwords of 1234 and go inside the programming mode.</p> <p>You only can perform the next commands after enter into programming mode</p>	*0*1234#	Congratulation!Within a certain time,you get administrator privileges!	When you enter *0*1234#, you enter into the programming mode. You must perform the next command in 10 minutes. If you did not do anything, the system will exist from programming mode.
2	<p>If you decide to protect your privacy, you can change the factory password to your new password.</p> <p>Enter the factory password follow by your new password.</p>	<p>*0*1234*new password#</p> <p>For example if you need to change to the new PW of 1212.</p> <p>*0*1234*1212#</p>	Change Password success!New password<1212>	Maximum 4 digits of passwords
3	<p>This command is to add telephone number into the admin list. Only the number in the list can receive alarm texts message and active the relay output.</p> <p>You can add up to 5 telephone number into the admin list.</p>	<p>*1*1*telephone number#</p> <p>For example set Admin number 18617185300 into admin 2</p> <p>*1*2*18617185300#</p>	<p>Administrator:</p> <p>1: 15989427391</p> <p>2:</p> <p>3:</p> <p>4:</p> <p>5:</p>	<p>Set Admin Numbers;</p> <p>*1*1* - set 1st admin number</p> <p>*1*2* - set 2nd admin number</p> <p>*1*3* - set 3rd admin number</p> <p>*1*4* - set 4th admin number</p> <p>*1*5* - set 5th admin number</p>
4	This commands allow you to check what is the phone number you program in the list	*2*	<p>Administrator:</p> <p>1:</p> <p>2: 18617185300</p> <p>3:</p> <p>4:</p> <p>5:</p>	
5	This command allows you to delete the admin number in the list.	<p>*3*N#</p> <p>N = Admin number 1- 5</p> <p>For example, if you want to delete admin no 2. just enter *3*2#</p>	<p>Administrator:</p> <p>1:</p> <p>2:</p> <p>3:</p> <p>4:</p> <p>5:</p>	<p>Delete Admin Number</p> <p>Delete 1st admin *3*1#</p> <p>Delete 2nd admin *3*2#</p> <p>Delete 3rd admin *3*3#</p> <p>Delete 4th admin *3*4#</p> <p>Delete 5th admin *3*5#</p>
6	This command allows you to check the relay status in ON or OFF Mode.	*4*	The reply will be either ; Relays is <ON> Relays is <OFF>	

7	<p>You must confirm the signal strength at site before you install the unit.</p> <p>If the signal too weak, the unit will not function properly.</p>	*5*	CSQ<18>	<p>Check Signal Strength</p> <p>CSQ 5 – 12: Signal too weak, system not function CSQ 13 – 24: Signal Good. System function well CSQ 25 – 32: Signal Excellent. System working well</p>
8	<p>Arm The Units</p> <p>By default the units is Arm , when disarmed the units users won't receive any notification when the alarm is activated</p>	*10*1#	Alarm Switch <ON>	
9	<p>Disarm the units</p> <p>By default the units is Arm , when disarmed the units users won't receive any notification when the alarm is activated</p>	*10*0#	Alarm Switch <OFF>	
10	<p>Check the status of Alarm</p> <p>Checking whether the alarm is being arm or disarmed</p>	*11*	Alarm Switch <ON>	
11	<p>No 8 and 9 is to set schedule to trigger relay.</p> <p>You need to set No 8, Your current time</p> <p>Then set No 9 , the time to trigger the relay</p> <p>Relay only can trigger if know your time now</p>	<p>*12*(year)(month)(date)(time)(Day)#</p> <p>For example: *12*201310104#</p> <p>Means : Year 2013, October, 10th, 16:05, Thursday</p>	Time change OK!	<p>Set the date, time, date, week</p> <p>This function to set the current time into the system The system must know your current time only can set the schedule time to turn on / off</p>
12	<p>After you finish the above step and you decide to set trigger the relay ON</p> <p>This command used when your relay status is OFF , if you need to trigger relay OFF , please use the No 10 setting</p>	<p>*13*1*(year)(month)(date)(time)#</p> <p>For example *13*1*201310101633#</p> <p>Means : Year 2013, October, 10th, 16:33 times</p>	Relay on time: 2013-10-10 16:33	<p>Scheduler ON</p> <p>If your relay status is OFF and you decide to turn ON relay at specified times.</p>

13	<p>This command is trigger relay OFF.</p> <p>This command is only perform if you decide to switch OFF the relay in specified times</p>	<p>*13*0*(year)(month)(date)(time)(day)#</p> <p>For example *13*0*201310101633#</p> <p>Means : Year 2013, October, 10th, 16:33 times</p>	Relay off time: 2013-10-10 16:33	<p>Scheduler Off</p> <p>If your SIM Card expiry 90 days, you can just enter 90 days automatic trigger relay and sent you SMS text messages</p>
14	You can check the what date and times, you set to trigger relay	*14*	Relay on time: Relay off time: 2013-10-10 16:33	Check Scheduler Time
15	This command to delete the schedule which you set to trigger relay ON	*15*1#	Relay on time: Relay off time:	Delete Scheduler ON time
16	This commands to delete the schedule which you set to trigger relay OFF	*15*0#	Relay on time: Relay off time:	Delete Scheduler OFF time
17	This command is factory default when you sending any command to the unit, the system will automatically reply with acknowledgement to prove that your setting is success.	*21*1#	Message switch <ON>	<p>SMS ON</p> <p>The Factory Default - system will acknowledge with SMS text message for every command you set.</p>
18	If you decide not to allow the system to text you for any acknowledgement after you sent the command to the unit. You can switch OFF the text message. Some Customer request this function because texts reply involved call cost	*21*0#	Message switch <OFF>	<p>SMS OFF</p> <p>If you decide not to allow the system text you for any acknowledgement, SMS *21*0# to Switch OFF</p>
19	Factory default is when you make call to trigger relay, the system will automatically reply text that your action is success.	*22*1#		<p>Factory Default not required for any setting.</p> <p>The factory already set according to this command you can change to next command anytime</p>

20	If you decide not to allow the system to text you for any acknowledgement after you call to the unit. You can switch OFF the text message. Some Customer request this function because texts reply involved call cost	*22*0#		
21	Factory Default is only allow the phone number which already program in the admin list can control the relay ON / OFF No setting required.	*23*1#	Mode switch <ON>	Security Mode Defaults only the numbers in the list can text to the unit to control relay. If you decide anybody can control the unit , use the following commands
22	If user change to this commands , this means that anybody can call to the unit to control the relay ON / OFF	*23*0#	Mode switch <OFF>	Open Mode When this commands set, anybody can call to the unit. to control the system Please take note the Privacy and Security before you decide to switch to OPEN MODE
23	Instead of using call, user can sent SMS to control Relay ON. Some country , SMS call cost is better than call cost	*24*1#	Relay<ON>	SMS ON Use SMS Text Message to control relay ON
24	Instead of using call, User can sent SMS to control Relay OFF	*24*0#	Relay<OFF>	SMS OFF Use SMS Text Message to control Relay OFF
25	Turn on / off the administrative call	*25*N#	0 = Call Switch :<OFF> 1 = Call Switch : Start Up Alarm 2 = Call Switch : AC down Alarm	0= turn off the call features , the units won't make any call to administrative number 1 = when the device power up , the units will call the first administrative number 2 = when the AC power down the units will call the administrative number

Step 3 - Installation

Insert the SIM card, to access the SIM card carrier gently push the button adjacent to it, insert the SIM card and carefully close the carrier

Connect the cable to terminals 110V - 220V & N ensuring positive is connected to terminal 110v - 200V, switch on the power supply , the red power LED will light indicating power is present, the blue network LED indicator will initially flash quickly, once logged onto the network , it will flash more slowly approximately one every 3 -4 seconds

It is recommended that the GSM Remote Control Switch be programmed to operate as required before final installation.

Connection Details

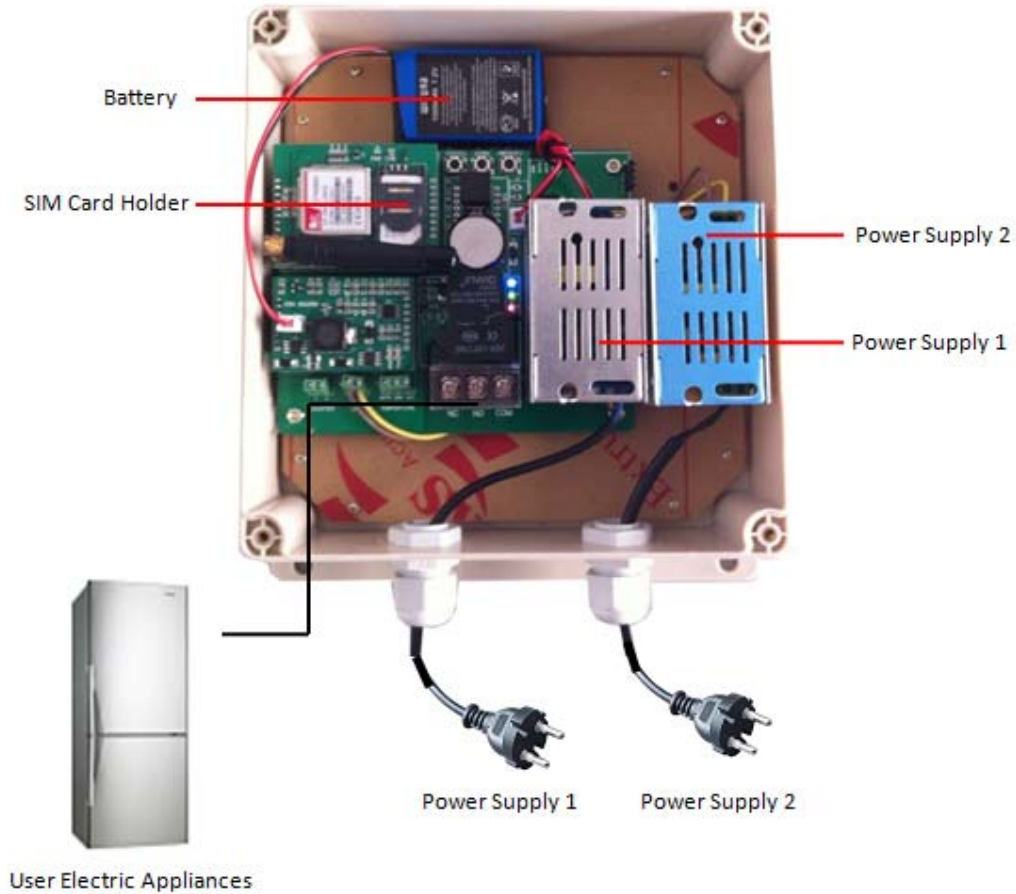
If you are unsure how to connect the device you wish to control refer to a qualified person

Connector	1	2	3	4	5	6	7	8	9
Board Label	J3			Power Supply			Power Supply		
Description	Relay			Power Supply 1			Power Supply 2		
Connection Details	NC	No	COM	E	N	L	E	N	L

Note

- 1. The Relay (J3) Was using for turning on and off the electrical appliance only**
- 2. User can set up the Relay by own requirement**
- 3. If using to monitoring the Power outage only , Doesn't required to connect Wire with Relay**

Example Of Wiring Diagram



Production Specifications

Operation Voltage	110-240 Vdc
Operating Current	Maximum 500mA, typically 55mA
Relay Contacts	1 x Normally Open and Normally Closed Contacts maximum switching capacity 20 amps @230v ac per relay
GSM Frequency MHz	Quad Band 850/900/1800/1900mhz. (3G network optional)
Humidity	Less Than 80% RH
Operating Temperature	-20c to 55c
Physical Size	130 x 100 x 50mm
Weight	900 Grams
Indicators	Relay , Telco , Power
Protection	IP 65 Weather Proof Casing
Approvals	C.E, FCC, ETSI

Troubleshooting

1. Red power LED not alight	Ensure that your DC power supply is connected correctly, positive (+) to terminal 220v and negative (-) to terminal N. Verify 12 volts is present using a volt meter
2. Blue network LED flashing every one second and not every 3 seconds	Ensure your SIM card has been activated and that the PIN request has been disabled. If the unit is in a low signal strength area consider using an external GSM antenna or changing to another network provider
3. I am not receiving confirmation test messages when program the administrators number	Ensure your telephone number is in the Administrator list and that sending text messages to your number is enabled.
4. I am not receiving any text messages when initially programming the unit	Ensure the unit is connected to the GSM network by observing the blue network LED; it should be flashing once every 3 seconds (see 2 above). Ensure the SIM card has credit
5. The unit has been working for several months and has now stopped responding to calls and text commands	Most but not all PAY SIM cards will be de-activated by the network if not used to make an outgoing voice call or send an SMS text message within a specific period. To prevent this simply send a txt command *0*PW#, then *2*, it will reply by text message, do this once a month to keep the SIM card active

Warranty

Witura Technology Sdn Bhd warrants the WT-1672A2 Double Circuit Power Failure Alarm System against defective parts and workmanship. Witura Technology Sdn Bhd shall, at its option, repair or replace the defective equipment upon the return of such equipment to any Witura branch. This warranty applies ONLY to defects in components and workman-ship and NOT to damage due to causes beyond the control of Witura, such as incorrect voltage, lightning damage, mechanical shock, water damage, fire damage, or damage arising out of abuse and improper application of the equipment.

Note: Wherever possible, return only the PCB to Witura Service Centres.

DO NOT return the enclosure.

The WT-1672A2 is a product of

Witura Technology Sdn Bhd

And is manufactured by

Shenzhen Witura Telecommunications Co., Ltd.

WARNING

For safety reasons, only connect equipment with a telecommunications compliance label. This includes customer equipment previously labelled permitted or certified.