



**GOT808 series**  
**8.5" WVGA TFT LCD Fanless**  
**Extended Temperature**  
**PANEL PC**  
**User's Manual**



## **Disclaimers**

This manual has been carefully checked and believed to contain accurate information. Axiomtek Co., Ltd. assumes no responsibility for any infringements of patents or any third party's rights, and any liability arising from such use.

Axiomtek does not warrant or assume any legal liability or responsibility for the accuracy, completeness or usefulness of any information in this document. Axiomtek does not make any commitment to update the information in this manual.

Axiomtek reserves the right to change or revise this document and/or product at any time without notice.

No part of this document may be reproduced, stored in a retrieval system, or transmitted, in any form or by any means, electronic, mechanical, photocopying, recording, or otherwise, without the prior written permission of Axiomtek Co., Ltd.

**©Copyright 2012 Axiomtek Co., Ltd.  
All Rights Reserved  
March 2012, Version A1  
Printed in Taiwan**

## Safety Approvals

- ◆ CE Marking
- ◆ FCC Class A
- ◆ e13 (GOT808CV-801 only)

### ◆ FCC Compliance

This equipment has been tested in compliance with the limits for a Class A digital device, pursuant to Part 15 of the FCC Rules. These limits are meant to provide reasonable protection against harmful interference in a residential installation. If not installed and used in accordance with proper instructions, this equipment might generate or radiate radio frequency energy and cause harmful interference to radio communications. However, there is no guarantee that interference will not occur in a particular installation. If this equipment does cause harmful interference to radio or television reception, which can be determined by turning the equipment off and on, the user is encouraged to try to correct the interference by one or more of the following methods:

1. Reorient or relocate the receiving antenna.
2. Increase the separation between the equipment and receiver.
3. Connect the equipment to another outlet of a circuit that doesn't connect with the receiver.

Shielded interface cables must be used in order to comply with the emission limits.

## Safety Precautions

Before getting started, please read the following important safety precautions.

1. The GOT808-801 does not come equipped with an operating system. An operating system must be loaded first before installing any software into the computer.
2. Be sure to ground yourself to prevent static charge when installing the internal components. Use a grounding wrist strap and place all electronic components in any static-shielded devices. Most electronic components are sensitive to static electrical charge.
3. Disconnect the power cord from the GOT808-801 before any installation. Be sure both the system and external devices are turned OFF. A sudden surge of power could ruin sensitive components that the GOT808-801 must be properly grounded.
4. The brightness of the flat panel display will be getting weaker as a result of frequent usage. However, the operating period varies depending on the application environment.
5. Turn OFF the system power before cleaning. Clean the system using a cloth only. Do not spray any liquid cleaner directly onto the screen. The GOT808-801 may come with or w/o a touchscreen. Although the touchscreen is chemical resistant, it is recommended that you spray the liquid cleaner on a cloth first before wiping the screen. In case your system comes without the touchscreen, you must follow the same procedure and not spray any cleaner on the flat panel directly.
6. Avoid using sharp objects to operate the touchscreen. Scratches on the touchscreen may cause malfunction or internal failure to the touchscreen.
7. The flat panel display is not susceptible to shock or vibration. When assembling the GOT808-801, make sure it is securely installed.

8. Do not open the system's back cover. If opening the cover for maintenance is a must, only a trained technician is allowed to do so. Integrated circuits on computer boards are sensitive to static electricity. To avoid damaging chips from electrostatic discharge, observe the following precautions:
  - Before handling a board or integrated circuit, touch an unpainted portion of the system unit chassis for a few seconds. This will help to discharge any static electricity on your body.
  - When handling boards and components, wear a wrist-grounding strap, available from most electronic component stores.

## **Trademarks Acknowledgments**

Axiomtek is a trademark of Axiomtek Co., Ltd. IBM, PC/AT, PS/2, VGA are trademarks of International Business Machines Corporation. Intel<sup>®</sup> and Atom<sup>™</sup> are registered trademarks of Intel Corporation. MS-DOS, Microsoft C and Quick BASIC are trademarks of Microsoft Corporation. VIA is a trademark of VIA Technologies, Inc. SST is a trademark of Silicon Storage Technology, Inc. UMC is a trademark of United Microelectronics Corporation. Other brand names and trademarks are the properties and registered brands of their respective owners.

## Table of Contents

Disclaimers .....	ii
Safety Approvals.....	iii
Safety Precautions.....	iv
<b>CHAPTER 1 INTRODUCTION.....</b>	<b>1</b>
1.1    General Description .....	2
1.2    Specifications.....	4
1.2.1    Main CPU Board .....	4
1.2.2    I/O System .....	4
1.2.3    System Specification.....	5
1.3    Dimensions .....	6
1.4    I/O Outlets.....	8
1.5    Power.....	9
1.5.1    GOT808-801.....	9
1.6    Packing List.....	12
<b>CHAPTER 2 MOUNTING Method.....</b>	<b>13</b>
2.1    VESA mounting.....	13
2.2    Power .....	14
<b>CHAPTER 3 DRIVERS INSTALLATION .....</b>	<b>15</b>
3.1    System .....	15
3.2    Touch Screen.....	16
3.2.1    Specification.....	16
3.2.2    Driver Installation- Windows XP.....	17
3.3    O.S. ....	24
3.3.1    Windows XP.....	24

# ***MEMO***





## **CHAPTER 1 INTRODUCTION**

This chapter contains general information and detailed specifications of the GOT808-801. Chapter 1 includes the following sections:



- General Description
- Specification
- Dimensions
- I/O Outlets
- Package List

## **1.1 General Description**

The GOT808-801 adopts a 8.5-inch WVGA color TFT LCD and low power consumption Intel® Atom™ processor.N455 1.66 GHz to provide excellent computing performance and thermal resistance.With the growing demand of wireless application, it provides one Mini card slot.

The fanless and wireless platforms are especially designed for operating under heavy-duty environment. The customers have instant access wireless LAN. Including transportation, train, control platform of ships, and oil pipe monitoring systems

### Wide Operating Temperature Range

The GOT808-801 features a unique extended temperature The temperature range from -10° to +50°C, with fanless cooling system and compact design for harsh environment. The low power power Intel® Atom™ processor N455 1.66GHz, making the platform a power-efficient solution

### Reliable and Stable Design

The GOT808-801 adopts a fan-less cooling system and a CompactFlash™ card, which makes it especially suitable for vibration-heavy environments, best for the transportation, ship, and industrial machinery markets. For high capacity storage requirement, GOT808-801 can work under 2G (random for CF) in operation mode with a patent of anti-vibration design. The patent improves the system reliability and sustainability.

### **WLAN Antenna Supported (optional)**

The GOT808-801 provides a PCI Express Mini card slot and WLAN antenna for wireless network connections. By simply plugging in the wireless LAN card, customers can use the unit in a wireless environment.

### **More Features**

GOT808-801 utilizes one 204-pin DDR3 1333 SODIMM system memory max. up to 2GB,

One CompactFlash™ slot and CF Card interface It provides over-current protection-fuse and a full set of I/O including 1 x RS-232(M12), 1 x USB 2.0(M12), 1x RJ45 for Gigabit Ethernet(M12).

Additionally, this slim unit supports VESA mount (optional).

## **1.2 Specifications**

### **1.2.1 Main CPU Board**

- CPU
  - Intel® Atom™ N455 1.66 GHz, Processor with (512K Cache, 533 MHz FSB) OnBoard
- System Chipset
  - Intel® System Controller Hub ICH8M
- BIOS
  - American Megatrends Inc. BIOS
- System Memory
  - One 204-pin DDR3 1333 SO-DIMM socket
  - Maximum memory up to 2GB

### **1.2.2 I/O System**

- Standard I/O
  - one RS-232/422/485(M12)
  - USB 2.0 x 1(M12)
- Ethernet
  - One port with Intel LAN for Gigabit/Fast Ethernet(M12)
- Expansion
  - One of PCIe Port for Bluetooth + Wifi mini card
- Storage
  - One slot for CF card
- Key-pad
  - LCD backlight adjustment :Dark/Bright
  - Power on /off

### 1.2.3 System Specification

- 8.5" WVGA(800x480) LCD with LED backlight
- (GOT808CV)3M ; (GOT808R) DMC
- Fanless Heat Dispensing Design
- IP66, NEMA 4 rugged protection, stainless front bezel
- Disk drive housing:
  - One CompactFlash card
- Net Weight : 2.32kgs
- Dimension (Main Body Size)
  - 263x45x184
- Operation Temperature
  - -10°C to 50°C
- Relative Humidity
  - 10 to 90% @ 40°C, Non-Condensing
- Power input
  - M12 type power connector
  - Power Rating: 9V~36V, 8A



***NOTE:*** All specifications and images are subject to change without notice.



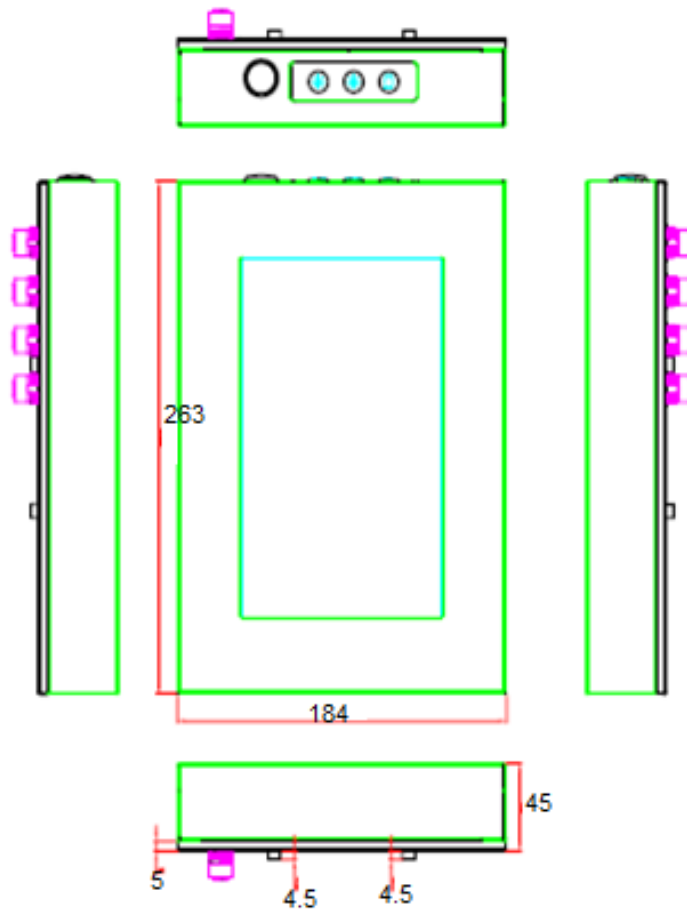
***NOTE :*** If the operation temperature is higher than 40°C, the wide temperature DRAM is recommended to be used on the device.

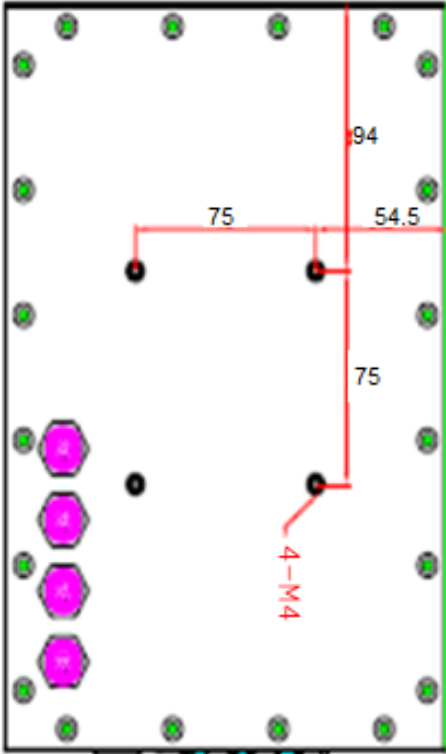


***NOTE :*** Against the LCD identity, if the operation temperature is lower than 0°C, it may have the shadow cover the screen.

### 1.3 Dimensions

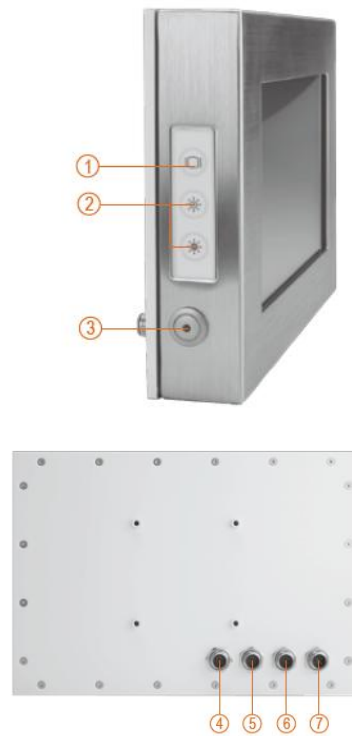
The following diagrams show the dimensions and outlines of GOT808-801.





## 1.4 I/O Outlets

Please refer to the following illustration for I/O locations of the GOT808-801.



1. Backlight switch
2. Brightness adjust
3. Power switch (ATX)
4. COM 1 (RS-232)
5. Ethernet
6. USB 2.0 x 2
7. DC power connector

The GOT808-801 offers the key-pad, the user can press the key-pad to backlight on/off and adjust the LCD backlight.



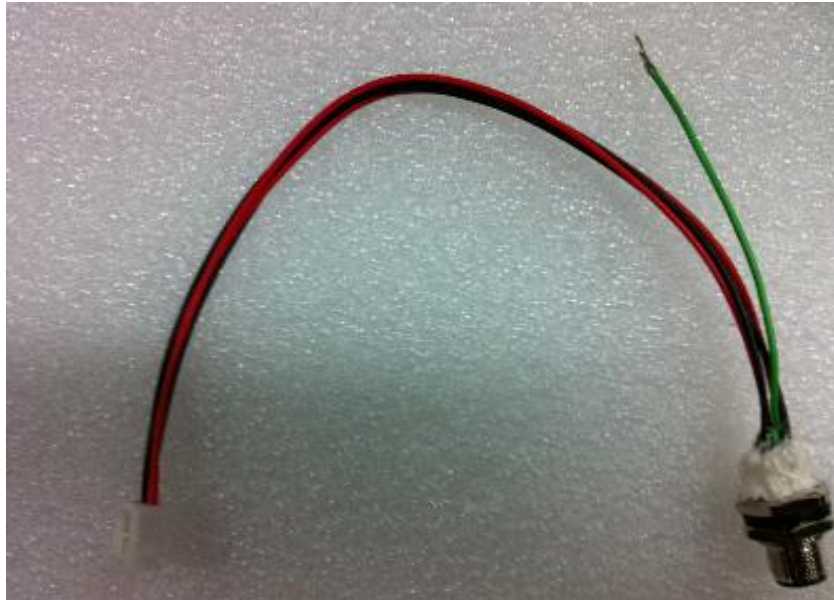
## **1.5 Power**

### **1.5.1 GOT808-801**

The GOT808-801 is equipped with a vehicle standard power board.

In order to ensure the vehicle could provide a stable DC power, GOT808-801 will detect the DC power from source is higher than the Start Voltage or not.

Water-proof power cable





**1 Feature:**

1.1 DC to DC, 12Voutput, switching mode power supply for vehicle use, it equips with surge stopper to protect loads from high voltage transients.

**2 Power Input:**

- 2.1 Voltage Input Range: 9~36Vdc (Typical: 12Vdc, and 24 Vdc)
- 2.2 Efficiency: 90% Min. with full loading at 24Vdc input.
- 2.3 Quiescence Consumption: 0.8W max. Without loading.
- 2.4 Power Input Protection: FUSE, OVP, UVP and reverse polarity protection.

**3 Power Output:**

Output	Nominal	Regulation	Ripple/Noise	Min	Max
1	+12V	±5%	120mV	~0.0A	6.0A

**4 Output Protection:**

4.1 Short circuit/overloading protection: When output is shorted to GND or exceed

20~30% output power rating, the power supply will cease the output and recover automatically after removal of the short circuit or overloading condition,

No need to reset input power supply.

4.2 Over voltage protection: When output voltage exceeds than 10% of rating that causes by PCB abnormal internally, the output will work intermittently that is

So-called latch off mode.

**5 Environment Specification:**

5.1 Temperature(power board):

Operating: -25°C to 70°C : Max. output 72W at 45°C ;  
36 W at 70°C. Storage: -40°C to 80°C

5.2 Humidity:

Operating: 10% to 90% RH

Storage: 5% to 95% RH

5.3 Altitude:

Operating properly from sea level to 10000 feet.

## **1.6 Packing List**

When you receive the GOT808CV-801, the bundled package should contain the following items:

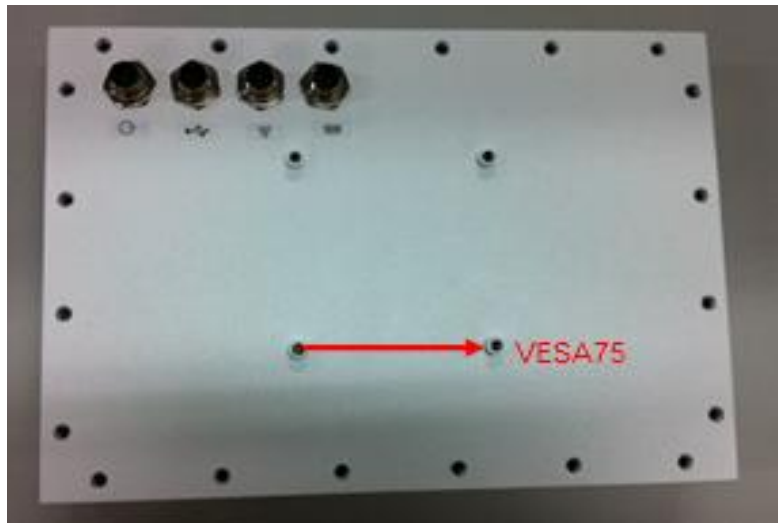
- GOT-808 x 1
- Driver CD x1
- M12 DC cable x1
- VESA mount x 1(optional)
- Power Adapter (optional)
- Water-proof cables (optional)
- Suspension Kit (optional)
- Keyboard Bracket Kit (optional)
- IP54 Keyboard(optional)

If you can not find the package or any items are missing, please contact Axiommtek distributors immediately.

## CHAPTER 2 MOUNTING Method

### 2.1 VESA mounting

The GOT808-801 provides VESA 75 mount. Screw four screws to fix the kit (optional) in the back chassis.



## **2.2 Power**

GOT808-801 equips with a M12 type power connector. It adopts 9VDC or 36VDC. Please follow the signs on power connector to connect DC power source.

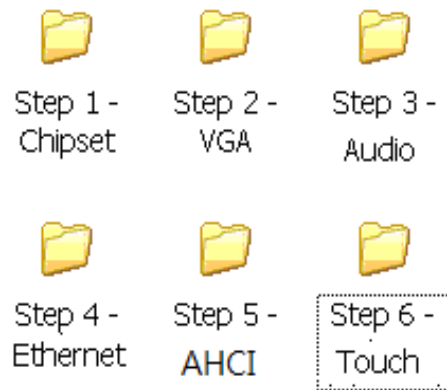


## CHAPTER 3 DRIVERS INSTALLATION

### 3.1 System

GOT808CV-801 supports Windows XP. To facilitate the installation of system driver, please carefully read the instructions in this chapter before start installing.

1. Insert Driver CD and select the “\Drivers”.



2. Select all files and follow the installing procedure.



**NOTE:** This system can't support the Audio function.

## 3.2 Touch Screen

The GOT808CV-801/GOT808R-801 uses the capacitive/4-wire Analog resistve. There is the specification and driver installation which are listed below.

### 3.2.1 Specification

#### GOT808CV-801

<b>Touch Screen</b>	8.9" 3M CAP.T/S 17-8741-226 W/O CONT.
<b>Touch Screen Controller</b>	3M EXII-7760UC
<b>Communications</b>	USB interface

#### GOT808R-801

<b>Touch Screen</b>	DMC QST-085WA075H
<b>Touch Screen Controller</b>	PenMount 6500 USB
<b>Communications</b>	USB interface

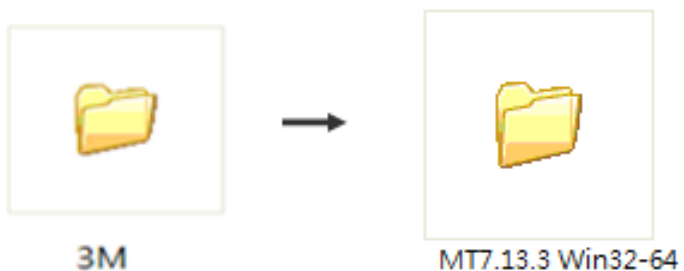


### 3.2.2 Driver Installation- Windows XP

The GOT808-801 provides a touch screen driver that users can install it under the operating system Windows XP. To facilitate installation of the touch screen driver, you should read the instructions in this chapter carefully before you attempt installation.

GOT808CV-801

1. Insert Driver CD and follow the path to select the driver - Touch”.



2. Follow the installing procedure and select the setup folder.

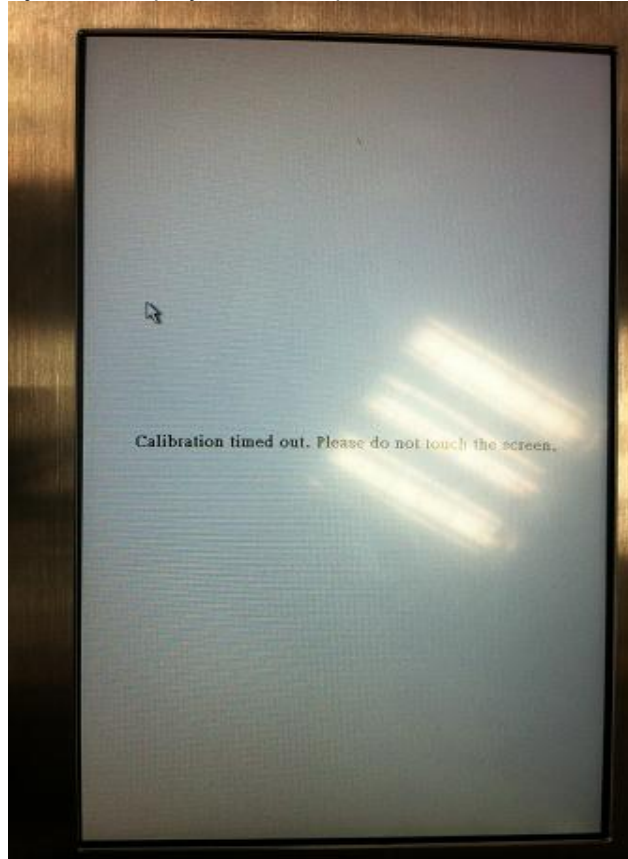


3. Follow the installing procedure and press OK.
4. Click Start menu and select "Control Panel".

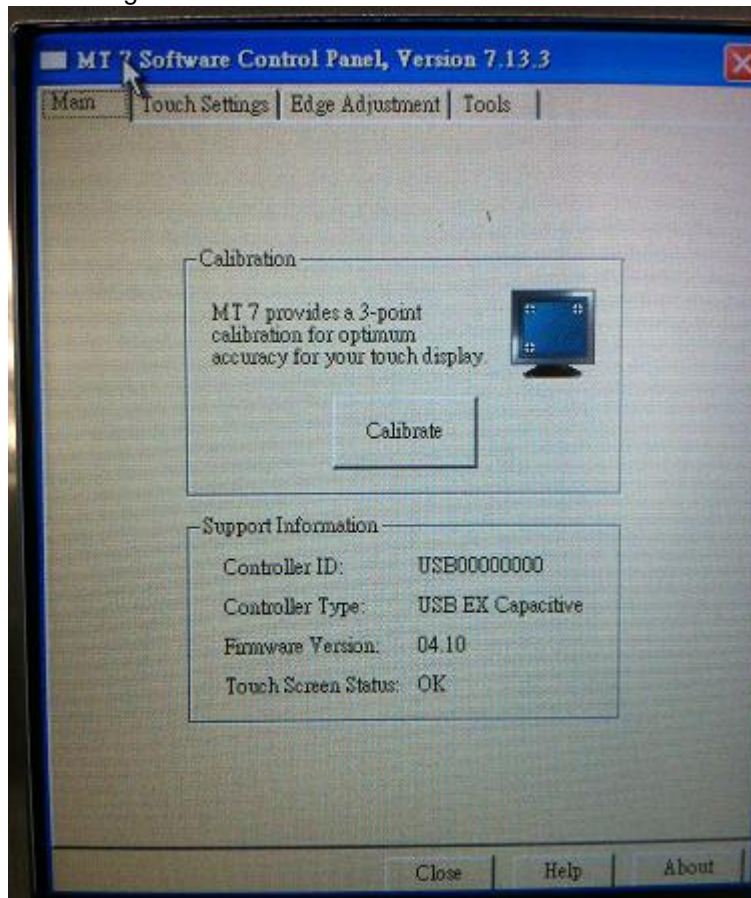


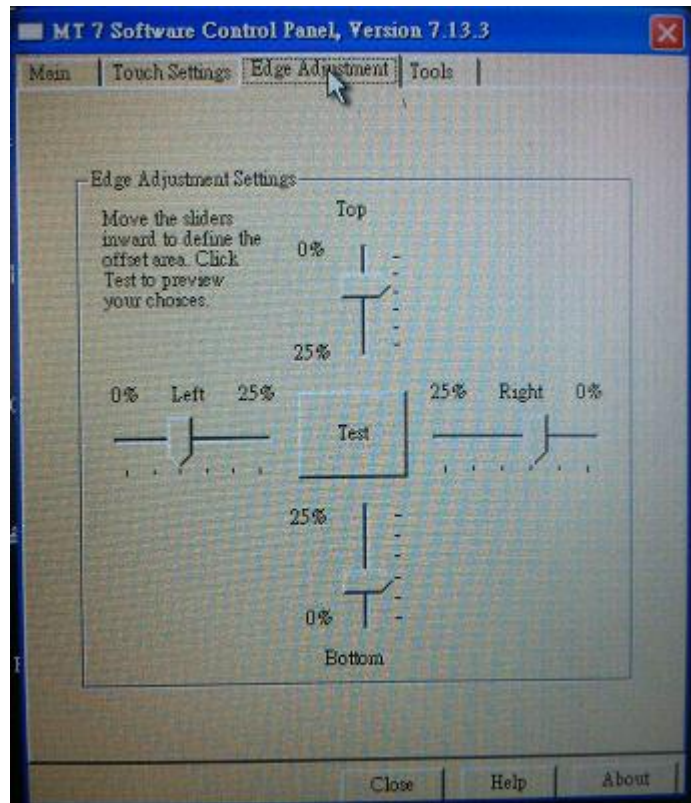
5 Calibration:

To adjust the display with touch panel, click "Calibration" .



- 6 Click the Menu, then select the “Edge Adjustment” to set the touch edge.



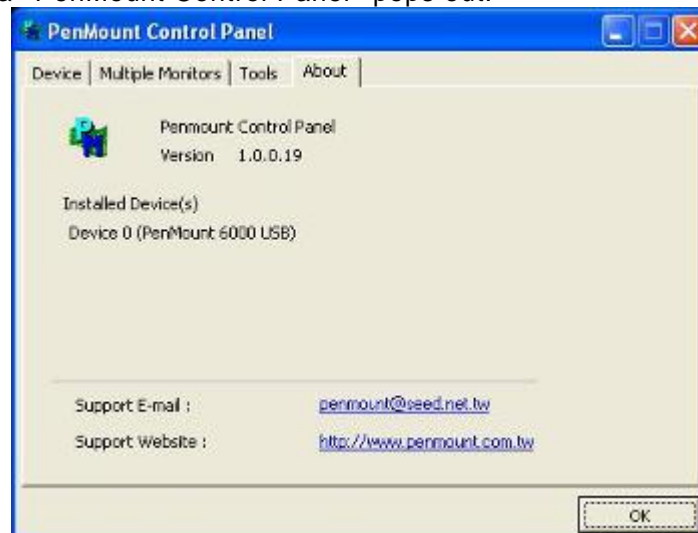


**GOT808R-801**

- 1 Insert Driver CD and follow the path to select the driver - Touch”.



- 2 Follow the installing procedure and press OK.
- 3 Click Start menu and select “PenMount Utilities”; and then, a “PenMount Control Panel” pops out.

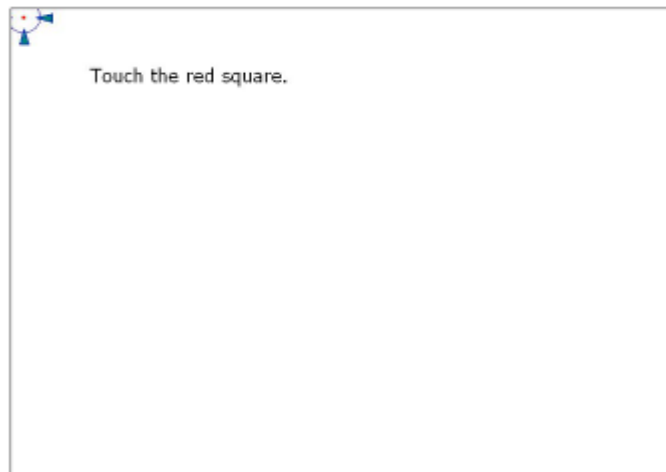


Select the "Standard Calibrate" tab.



4. Calibration:

To adjust the display with touch panel, click "Calibration" and follow the calibrate point to do calibration; there are five points on screen for calibration.



5. Press OK.

### **3.3 O.S.**

The GOT808-801 provides the Windows XP. The O.S. is supported devices which are listed below.

#### **3.3.1 Windows XP**

Here are supported onboard devices:

- Onboard Multi I/O
- USB
- 10/100/1000 base-T Ethernet
- Compact Flash