

User's Manual for PowerSight® PS2500



99 Washington Street
Melrose, MA 02176
Phone 781-665-1400
Toll Free 1-800-517-8431



Visit us at www.TestEquipmentDepot.com

Rev for FW 4.43 / SW 3.4H
Copyright 2012 by Summit Technology

PowerSight is a registered trademark of Summit Technology, Inc.

The PowerSight model PS2500 is designed to comply with part 15, subpart B, of the FCC Rules for a Class A digital device.

Model PS2500 is designed to comply with the requirements of IEC61010-1:2001 for a 600V input rating measurement category IV, pollution degree II, double insulated electronic device.

Model PS2500 is manufactured by Summit Technology, Inc in the U.S.A. The standard warranty period is 12 months from date of purchase. We encourage you to advise us of any defects of design or manufacture of any of our products. We are dedicated to your successful use of the product.



There are no user serviceable parts in your PowerSight meter. Opening the case voids your warranty and may result in present or future danger to users of the meter. The rechargeable battery inside is a custom-designed battery pack that is only to be replaced by authorized Summit Technology technical service personnel.



Cleaning is to be done by use of a dry or damp piece of cloth. Grease may be removed by light application of isopropyl (rubbing) alcohol. Avoid the use of solvents, since they may dissolve or weaken the plastic enclosure. Do not use water or other conductive liquids since they may pose a safety risk.



Use of this equipment in a manner not specified by Summit Technology can result in injury and voiding of warranty.

Table of Contents

Introducing PowerSight	7
In a Hurry? --- The Basics of Operation	8
Connecting to PowerSight.....	9
Voltage Test Leads	9
Current Probes	10
Connections to PowerSight	12
Introduction to Power Delivery Configurations.....	14
Connecting to Single-phase Power	16
Connecting to 120 V Outlet Adapter Box.....	17
Connecting to Multiple Single-phase Loads.....	18
Connecting to Split-Phase (Two Phase) Power	19
Connecting to Three-Phase Four-Wire (Wye) Power	20
Connecting to Three-Phase Three-Wire (Delta) Power	21
Connecting to Three-Phase Four-Wire Delta Power	22
Connecting to Three-Phase Grounded Delta Power	22
Connections Using 2 Current Approach	23
Connecting to 3 CT / 3 PT Metering Circuit	24
Connecting to 2 CT / 2 PT Metering Circuit	27
Connecting to Open Delta (3CT / 2PT) Metering Circuit.....	27
Connecting to Line-To-DC (LDC) Converter Accessory.....	28
Measuring Multiple Parallel Conductors	30
Measuring Currents Below the Range of the Current Probe	32
Turning PowerSight On.....	33
Connecting to Power	33
Turning PowerSight On	34
Turning PowerSight Off	34
Communicating with PowerSight.....	35
Introduction.....	35
Step 1: Connecting to the Meter at the Operating System Level.....	36
Step 2: Connecting to the Meter in PSM (the Application Level)	37
Using Removable Memory Cards	39
Introduction.....	39
Operation and Limitations	39
Using the Memory Card Data with PSM	40
Verifying Connections Using PowerSight (SureStart™)	42

Importance of Verifying Connections and Wiring	42
Identifying the Power System	44
Error Summary	45
Identifying Errors	45
Checking out Connections using PSM	48
Checking Voltage Levels – Using PSM	48
Check Voltage Phase Sequence – Using PSM	49
Checking Current Levels – Using PSM	50
Checking I Phase Sequence – Using PSM	51
Checking Phase Lag Angle – Using PSM	51
The “Next” Button	53
Overview	53
Voltage Summary	53
Current Summary	54
True Power (KW) Summary	54
Apparent Power (KVA) Summary	55
True Power Factor Summary	55
Logging Summary	56
Time Summary	56
Identifying the Meter	57
Identifying Operating Parameters	58
Measurement Types	59
Voltage Measurements	59
Voltage Measurements in PowerSight	60
Voltage Measurements in PSM	60
Current Measurements	62
Current Measurements in PowerSight	63
Current Measurements in PSM	64
Imbalance Measurements	65
Imbalance Measurements in PSM	66
Power Measurements	66
Power Measurements in PowerSight	67
Power Measurements in PSM	68
Power Factor Measurements	69
True Power Factor Measurements in PowerSight	71
Displacement P.F. and Phase Measurements in PowerSight	72
Power Factor and Phase Measurements in PSM	72
Energy Measurements	73
Energy Measurements in PowerSight	75
Energy Measurements in PSM	75
Cost Measurements	76
Cost Measurements in PowerSight	76

Cost Measurements in PSM.....	77
Demand Period Measurements	77
Demand Period Measurements in PowerSight.....	78
Demand Period Measurements in PSM	78
Frequency Measurements	78
Frequency Measurements in PowerSight.....	79
Frequency Measurements in PSM	79
Logging Summary on PowerSight	80
Time Summary on PowerSight	81
Time and Capacity Measurements in PowerSight	82
Time and Capacity Measurements in PSM	82
Harmonic Measurements	83
Harmonic Measurements in PowerSight	85
Harmonic Measurements in PSM	85
Measurement Modes	87
Introducing Measurement Modes	87
Phase-Neutral vs Phase-Phase vs 2 Current Mode	87
Changing the Voltage Measurement Mode in PSM	89
50/60/400Hz vs DC vs Variable Frequency	89
Changing the Frequency Measurement Mode in PSM.....	91
Always Positive Power versus Negative Power Allowed	91
Changing the Power Measurement Mode in PSM	92
Defining Inputs.....	93
Changing Input Ratios in PSM	94
Voltage & Current Waveforms	96
Introduction.....	96
Saving Consumption Waveforms.....	96
Receiving Stored Consumption Waveforms	97
Viewing Consumption Waveforms.....	99
Monitoring Power Consumption.....	104
Introduction.....	104
Basic Consumption Data Logging	105
Starting and Stopping Consumption Logging	107
Receiving Consumption Data Log from PowerSight.....	108
Viewing Consumption Logs	109
Deleting Log Data in the Meter	111
Custom Consumption Data Logging.....	113
Introduction.....	113
Starting Data Logging	113
Stopping Data Logging.....	114
Setting the Consumption Logging Period	115

Setting Measurement Types.....	115
Setting Measurement Modes.....	117
Saving and Retrieving Data Setups to File or PowerSight.....	117
Loading Data Setups from the Memory Card (SD Card)	118
Saving Data Setups to the Memory Card (SD Card)	119
Restoring the Default Setup.....	119
Report Generator Software.....	120
Introduction.....	120
Generating a Report	120
Viewing a Report.....	122
Other Functions of PowerSight	124
Calibrating PowerSight.....	124
Administrative Functions	124
Other Functions within PSM.....	126
Introduction.....	126
Remote Control of PowerSight.....	126
Locating and Installing Software and Firmware.....	127
Setting up Administrative Features of PowerSight via PSM.....	128
Setting Operational Features of PSM	128
Putting it all Together (Monitoring for the First Time)	129
Working with Graphs and Waveforms	132
General	132
Reading Graphs and Waveforms.....	134
Zooming and Panning	135
Determining Log Capacity	138
Troubleshooting & Frequently Asked Questions (FAQ)	140
Overview of the Remote Control Keypad.....	144
Compatibility Guide.....	146
Specifications*	148

Introducing PowerSight

Congratulations on your decision to buy a PowerSight 2500! You have just purchased one of the smallest and yet most powerful instruments for measuring and analyzing electric power that exists.

PowerSight is three instruments in one:

- a power logger
- a demand analyzer
- a harmonics analyzer (with HAO option)

The philosophy of the product is to give you an instrument that

- answers all your basic questions about electric power in a truly convenient size at an attractive price
- works effortlessly with all power systems
- is nearly foolproof in setup and in getting results
- makes reporting results quick and powerful.

The combination of the PS2500, our PowerSight Manager (PSM) software, and our Report Writer software is truly remarkable.

If you are looking for a simple yet powerful tool that can be easily and reliably installed and operated, one that provides for comprehensive data analysis, **you've found your tool of first choice.**

Whether your interest is in measuring

- True power
- Harmonics
- Automated report writing
- Viewing actual waveforms
- Wiring and system analysis

PowerSight puts all the power in the palm of your hand!

*Note: Throughout this manual, whenever we refer to an individual key of the keypad, we print the name on the key enclosed by square brackets. For example, the "Volt" key is referred to as [Volt].

In a Hurry? --- The Basics of Operation

If you're in a hurry, are experienced, and use good sense, you can be up and running very quickly.

1. Review the section "[Connections to PowerSight](#)", paying special attention to the safety warnings. You or the unit can be hurt if you don't do things right!
2. Review the section on setting up your PS2500, "[Custom Data Logging](#)". There are many different operating modes and options. You don't need to understand them all to get started immediately, but it will increase your productivity to understand the options available to you.
3. There is only one button available to press on the PS2500, [the \[Next\] button](#). Pressing this button will tell you what connection errors may be present when you first turn the unit on. It then displays summaries of measurements for all three phases for your use.
4. To analyze data, send saved waveforms and data logs to your computer using the supplied PSM software.

If you want to create a data log, review the section "[Putting it all Together \(Logging for the First Time\)](#)". This will enhance your understanding of logging and increase the likelihood that you will have good results on your first attempt.

*Note: Throughout this manual, whenever we refer to the "Next" button of the PS2500, it will be referred to as [Next].

Connecting to PowerSight

Voltage Test Leads

A Deluxe Voltage Probe set consisting of four leads is included with each PowerSight. Each of the voltage test leads is 6 feet (2 meters) long, with safety banana jacks at one end and safety plunger clamps at the other end. Each is labeled at both ends as the V_1 , V_2 , V_3 , or V_N test lead. The safety plunger clamps have telescoping jaws that you can actuate while keeping your fingers three inches away from the actual metallic contact. Regular test probes have conventional alligator jaw attachments that require your fingers to be within one inch of the metallic contact. Also, the method of attaching alligator jaws to a test lead can allow a gap in the insulation between the lead and where they join. This is where your thumb and finger are pressing while you actuate it.



For these reasons, to avoid unnecessary risk of shock, only use test leads and clamps that are CE rated 1000V CAT III (or 600V CAT IV) such as those supplied with your meter.



Another word of caution: Whenever connecting to a live circuit, remember that the jaws of a voltage test lead are much wider when they are open than when they are closed. The potential to short or flash across two adjacent terminals or wires is a constant danger when connecting to a live circuit. Depending on the current capacity of the circuit being shorted, arc flash and a deadly explosion of molten material can result!

Once they are securely connected, the deluxe voltage leads are safe for steady voltages of the 600 Vrms rating of PowerSight. The clamps of the deluxe voltage leads are rated for 1000V working voltage, measurement category III. This is equivalent to measurement category IV for a working voltage of 600V, the rating of the PS2500.

Summit Technology also sells a fused voltage lead set (order DFV). The safety advantage of fused leads is that if a short occurs through the insulation of a lead to ground, the fuse in the handle should quickly blow out, preventing the lead from vaporizing in an explosion of molten metal. The safety disadvantage of fused leads occurs when the fuse is blown or is removed. The user will measure 0 volts on a live circuit and may be tempted to lower his safety awareness, possibly resulting in shock or damage. The DFV probes are rated for 1000V, measurement category III.

Current Probes

Summit Technology provides a variety of probes for your use. They offer different measurement ranges, different sizes and physical characteristics, and the ability to measure different types of current.

Probes such as the HA1000 are excellent choices to use with PowerSight because they support all the accuracy specifications of the product. For instance, the HA1000 has an accuracy of 0.5% whereas many probes on the market have an accuracy of 2-3%. Also, the HA1000 maintains its accuracy for frequencies up to 20,000 Hz. With our spectrum analyzer option (order FAO) it can be used to measure frequencies up to 100,000 Hz riding on the power line. This allows accurate current and power readings of distorted waveforms, accurate readings of harmonics, and the measurement of current transients that other probes would not even detect.

Phase shift is also an important probe characteristic. The HA1000 has less than 1/2 degree of phase shift across the frequency range when measuring currents above 50 amps and just 1.5 degrees at 5 amps. This means that instantaneous measurements of power are highly accurate, regardless of the waveform shape. The phase shift characteristics of most other probes on the market are not this good. This results in erroneous power and cost measurements and distorted waveforms. Please Note: To diminish phase shift when measuring small currents, it is advisable to clamp onto multiple "turns" of the same conductor in order to increase the effective current being sensed.

The HA5 offers two advantages over the HA1000, but these advantages come at a cost. Its advantages are that the HA5 is a very small size ($5.25 \times 2.00 \times 1.35$ inches) and second, it offers much greater sensitivity since it reads currents from 20 milliamps to 5 amps (as compared to the HA1000 measuring 1 - 1,000 amps). The tradeoff is accuracy. The probe has a basic accuracy of 2% and its phase shift varies by frequency and by amplitude. All told, you can expect to measure current to a nominal 3% accuracy and power and cost to a nominal 6% accuracy using the HA5 probe.

The HA100 probe is the same compact size as the HA5. The HA100 measures from 0.1 to 100 amps at 2% accuracy. It is a good choice over the HA1000 if you wish to lock PowerSight, its leads, and current probes inside a power panel that you are monitoring. It is also a good choice when small size is important while measuring currents above 5 amps. The HA100 is a popular choice for a second set of probes.

For very large currents and large bus bars, we offer the eFX6000. The eFX6000 is a "flex" type probe. It consists of a flexible tube about 0.4 inch in diameter and 24 inches long (a 36 inch version is also available). The ends of this tube snap together around a conductor to sense the current. Flex probes are very handy when space is tight, when multiple cables must be clamped around, or when a bus bar is present. They are also lighter than clamp-on probes. The flexible tube creates a circle with an inside diameter of 7 inches. This circle can be deformed into various shapes to accomplish your measurement goals. The basic accuracy of the flex probe is good, measuring from 1 to 6000 amps (across two ranges) within 1% accuracy. However, readings can vary as much as 2% depending on the position of the flex probe while connected. Position the flexible portion of the probe around the conductor so that the cable from the probe drops straight down and the place where the ends snap together is at a right angle with the conductor and not touching it. The frequency response of flex probes is very good, but phase shift increases with frequency. Our eFX6000 is powered by the meter, so no batteries are required.



You must use added caution when connecting an FX series current probe around exposed conductors and bus bars since you must pull the tube around the conductor and thus get your hands and arms closer to it than when using HA series clamp-on type current probes. Wise practice dictates that you use high insulation protection on hands and forearms in these circumstances or deactivate the circuit.

The DC600 probe is used for AC current measurements from 5 to 400 amps and DC measurements from 5 to 600 amps. It offers accuracy of $2\% \pm 1$ amp from 5 - 400 amps and 3% accuracy for DC from 400-600 amps. This probe relies on Hall effect technology and its output varies slightly over time. Therefore, a zero level adjustment is provided on the probe's handle for initial zeroing before each measurement session. The probe can clamp around one cable up to 1.18 inch diameter or two cables of up to 0.95" diameter. Unlike other manufacturers' DC probes, ours do not require batteries for them to run.

New probes and adapters are introduced regularly, so if you have a special need, give us a call.

Please Note: Always inspect the metal surfaces of clamp-on probes before use. Clean them with a rag or sand them with fine sand paper and then slightly oil the surface. Any dirt or rust will affect the accuracy of the measurements!

Connections to PowerSight

Voltage test leads plug into the top end of PowerSight. Each test lead of the Deluxe Voltage Test Lead set is labeled (V_N , V_1 , V_2 , or V_3) and each jack is similarly labeled (V_N , V_1 , V_2 , or V_3).



Note: The V_N test lead is a different color from the other leads (black). Similarly, the V_N jack on PowerSight is a different color from the other ones (black). Connecting anything other than neutral or ground to the V_N jack can jeopardize your safety, the functioning of the unit, and the accuracy of the unit.

Current probes plug into the top end of PowerSight, just above the voltage inputs. Each current probe is labeled (I₁, I₂, I₃, or I_N) and each jack is similarly labeled (I₁, I₂, I₃, or I_N). When plugging a current probe into PowerSight, the flat side of the plug should be facing upwards so the label is readable. This will align it properly for plugging into the PowerSight case.

Clamp-on probes have a correct orientation in which to attach them. On most probes' head, there will be an arrow pointing in the direction of the conductor being measured. When clamped onto I₁, I₂, I₃, or I_N, the arrow should point along the conductor from the power source towards the load. If the current probe is connected backwards, its waveform will appear upside-down when you upload waveforms, it may be slightly less accurate in its current readings, and, most importantly, if you operate in positive/negative power measurement mode, power readings will be disastrously wrong.

Introduction to Power Delivery Configurations

Figure 1 presents most common power delivery configurations. PowerSight is able to measure voltage, current, power, power factor, and more for all of these systems. Figure 1A presents the normal single-phase and split-phase service as found in a residential service. In North America, V_{1N} and V_{2N} are 120V and are 180 degrees out of phase with each other. When heavier loads are encountered, V_{12}

(240V) is used by delivering both hot voltages to the load. Neutral provides the current return path. If the load is balanced, there will be relatively little neutral current. Refer to figures [2](#), [3](#), [4](#), and [5](#) for various ways to connect to single-phase and split-phase power service.

Figure 1B presents normal three-phase “wye” power service. Voltages are usually measured from phase-to-neutral. Neutral provides the current return path. If the load is balanced, there will be relatively little neutral current. Refer to [figure 6](#) for how to connect to a three-phase wye power service.

Figure 1C presents normal three-phase delta service. Voltages are usually measured from phase-to-phase. In North America, service is usually supplied as 120V, 240V, 480V, 600V, 4160V, or 12,500V. In most of the world, phase-to-phase service is usually supplied as 381V, 5,716V, or 11,431V. Summit Technology has voltage probes for direct connect to all of these services. Refer to

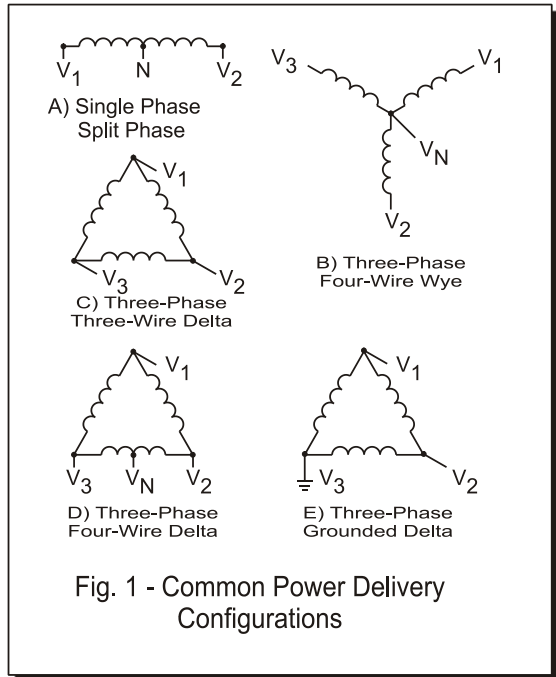


Fig. 1 - Common Power Delivery Configurations

[figure 7](#) for how to connect to a delta power service. When there is no access to measuring one of the currents, [figure 8](#) presents the 2 current approach for measuring power. This approach is also useful for measurement of an open delta circuit as described in Connections to an Open Delta Circuit (2PT/3CT) [figure 10](#). Although phase-to-phase is the normal voltage measurement mode for this service, PowerSight can be set to phase-to-neutral (even though the neutral is not connected). In this case, the measured voltages will be phase-to-metering-neutral (such as V_{1N} $V_{1N} = 277V$ for a 480V service) and all other measurements will also be correct.

Figure 1D presents three-phase [four-wire delta service](#). In this configuration, a neutral is supplied from a point midway between two phases. This is handy when 240V delta is supplied. V_{2N} and V_{3N} supply conventional 120V single-phase power and V_{1N} provides 208V, if needed. In this configuration, depending on what you are measuring, you may choose to measure in phase-to-phase mode or in phase-to-neutral mode.

Figure 1E presents [grounded delta service](#). This configuration is actually not very common. It can be attractive to use if an electrically isolated three-wire delta service is available and there is a need to provide the power a long distance away at a private facility (such as a saw mill). By grounding one of the phases at the source, the cost of supplying one of the phases to the remote site is saved. A motor at that site would be connected to phase 1, phase 2, and earth ground. There is increased danger in this configuration over normal isolated delta service since the reference to ground is intentionally an excellent conductive path. Nevertheless, PowerSight will provide the desired measurements in this configuration.

Connecting to Single-phase Power

Figure 2 presents the basic connections to a single-phase

system.  **Be sure to follow the safety warnings of the previous sections before making the connections.**

Clamp your phase 1 current probe onto the "Hot" wire. Make a metallic connection to neutral with the V_N voltage lead. Similarly connect the V_1 lead to "Hot".

Since voltage now comes into PowerSight on V_1 and current is sensed by I_1 , the power and power factor for this single-phase system will be available as phase 1 power and phase 1 power factor.

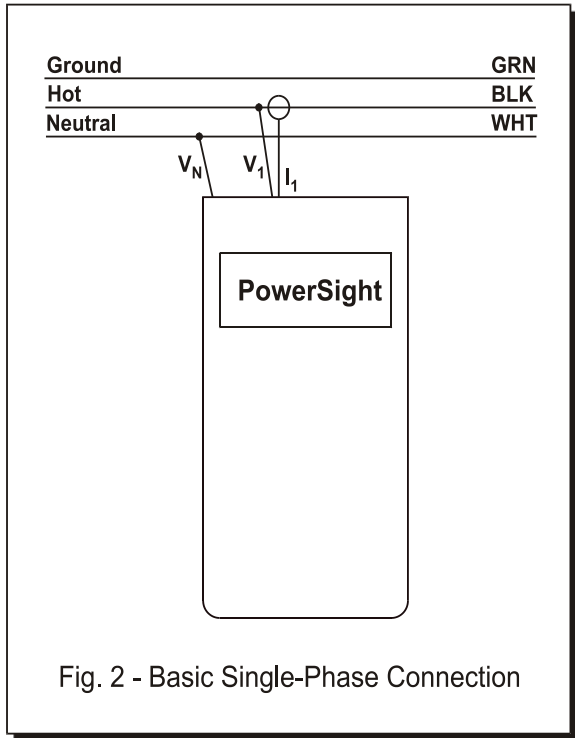


Fig. 2 - Basic Single-Phase Connection



Caution: Until you are certain that your voltage connections to PowerSight are correct, disconnect any current probes. This is because PowerSight and all of its connections float at the potential of V_N . If V_N is "hot", there may be a breakdown through the insulation of any attached probes.

Helpful Hint: How to Identify the "Neutral" lead.

Normal single-phase wiring follows the convention of "neutral" being the white wire, "hot" being the black wire, "hot2" being the red wire, and "ground" being the green wire. If the wiring and your

connections to PowerSight are as shown in figure 2, V_{1N} will be some relatively large number like 120 volts and V_{3N} will be a small voltage like 3 volts. If you then reverse the ground and neutral leads, V_{1N} will now read slightly less, like 117 volts. If "hot" and "neutral" are reversed, then V_{3N} will become a large number, like 117 volts.

Connecting to 120 V Outlet Adapter Box

The 120 V Outlet Adapter Box accessory (order number 120ADP) offers a safe, convenient, and accurate way to monitor voltage in a commercial setting or to evaluate power usage of appliances.

Figure 3 presents the connections to the Adapter Box. Simply plug the adapter box into a wall socket and then attach the voltage and current leads into PowerSight.

Each lead is labeled to eliminate errors in connections.

⚠ Note: Make sure that the hot and neutral wiring being measured is not reversed. If so, PowerSight and its attachments will "float" at 120 V.

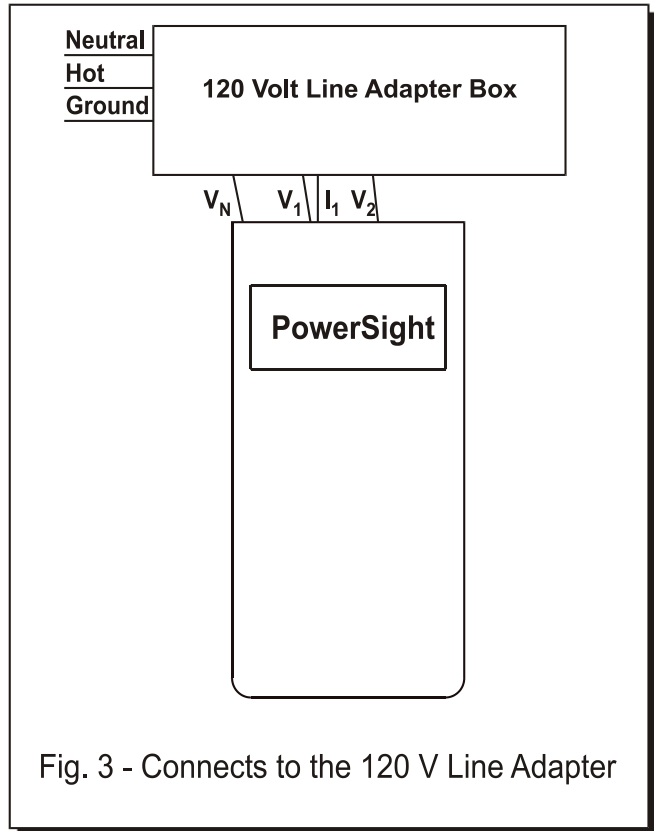


Fig. 3 - Connects to the 120 V Line Adapter

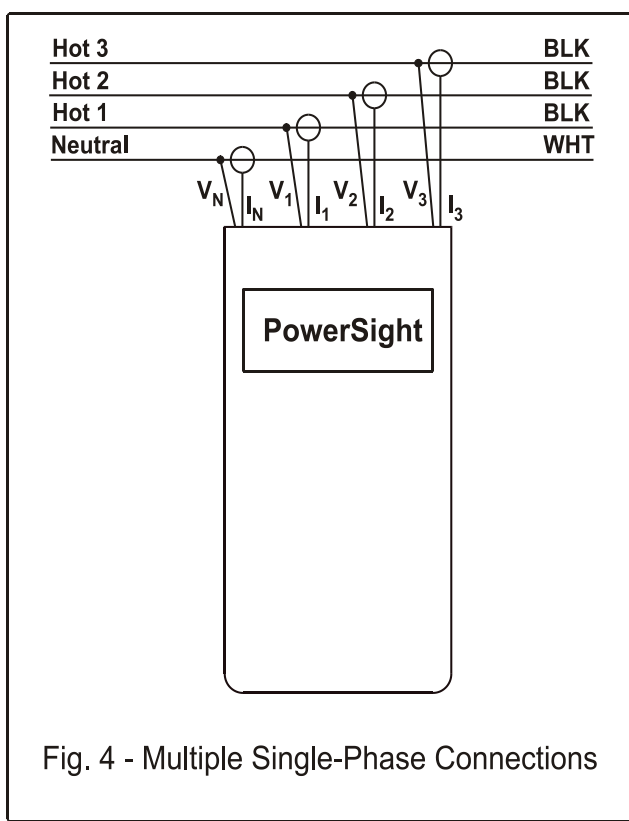


Note: The 120ADPa is rated for continuous duty of up to 15 Arms. Do not exceed this continuous load.

To evaluate the power usage of an appliance, simply plug the appliance into the top of the 120 V Outlet Adapter Box after the other connections have been made and verified. Even without an appliance plugged in, the adapter box offers a convenient means of checking for transients or analyzing the harmonic content of the incoming voltage.

Connecting to Multiple Single-phase Loads

Figure 4 presents a means to monitor 3 single-phase loads simultaneously. The loads must all share the same neutral voltage connection. If the loads run off the same line voltage, connect V_1 , V_2 , and V_3 to the same "hot" wire. I_1 , I_2 , and I_3 serve the 3 loads. This approach can also be used to evaluate the current of a 4th load, but the power used by that load will not be calculated.



In this configuration, the voltage, current, and power of each load can be displayed directly or graphed on your PC using our PSM software.

Connecting to Split-Phase (Two Phase) Power

Fig 5 shows the recommended connections to a split-phase system as found in commercial and residential facilities, when measuring the supply to two single phase loads. There are two "Hot" wires 180 degrees out of phase with each other and sharing the same neutral. Appliances such as ovens that require 240V will span

across both hot wires. When evaluating the power for a load spanning the two phases, remove the V_N voltage lead since it may affect the power factor readings of each phase.

In this configuration, a reading of V_{1N} is of hot-neutral and V_{2N} is hot2-neutral. I_N does not need to be connected and V_N should not be connected when the load spans the two phases. The power associated with one hot is measured as phase 1, the power of the other hot is measured as phase 2. In phase-neutral measurement mode, the voltage readings will be from hot-to-neutral. If you

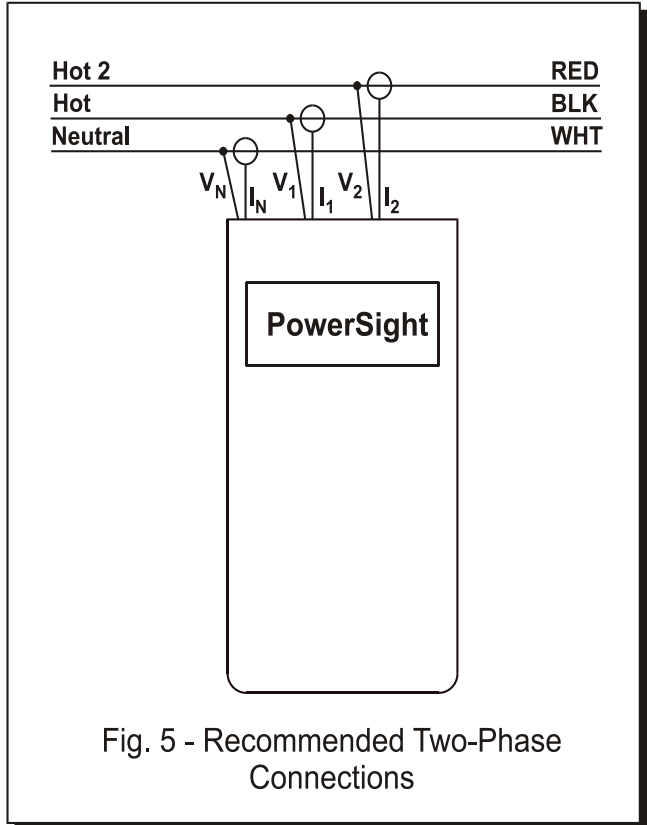



Fig. 5 - Recommended Two-Phase Connections

change the measurement mode to phase-phase, V_{12} will be the hot-to-hot voltage that serves the high power appliance.

Connecting to Three-Phase Four-Wire (Wye) Power

Figure 6 presents the recommended connections to a three-phase system with voltages referenced to neutral, a "phase-neutral" or "three-phase four-wire wye" configuration.

 **Be sure to follow the safety warnings of the previous sections before making the connections.**

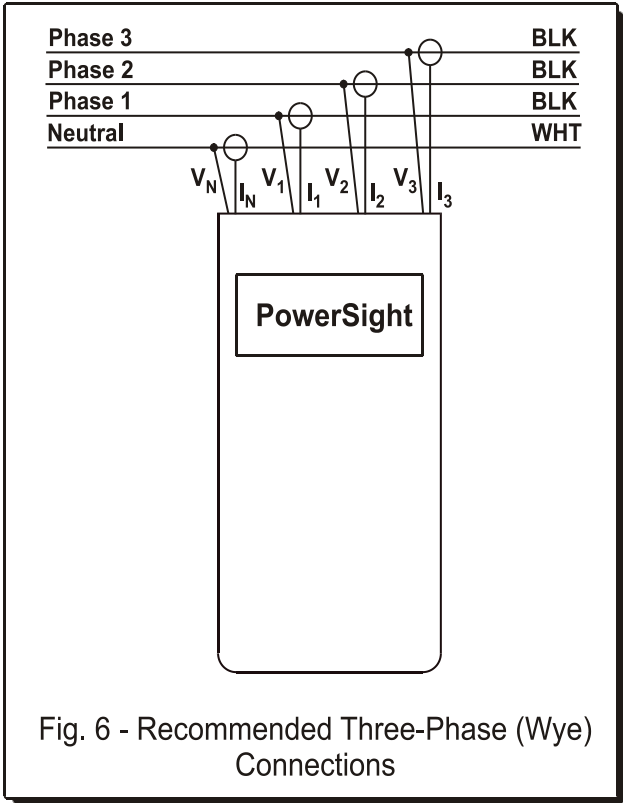


Fig. 6 - Recommended Three-Phase (Wye) Connections

Although the current of each phase is carried by neutral, neutral current is generally relatively small since the currents of the 3 phases largely cancel each other in the neutral leg. In a perfectly balanced system the current in neutral would be zero.

In a wye system, each phase is essentially independent of each other. For this reason, the power factor of each phase has direct meaning, but the total power factor is less meaningful.

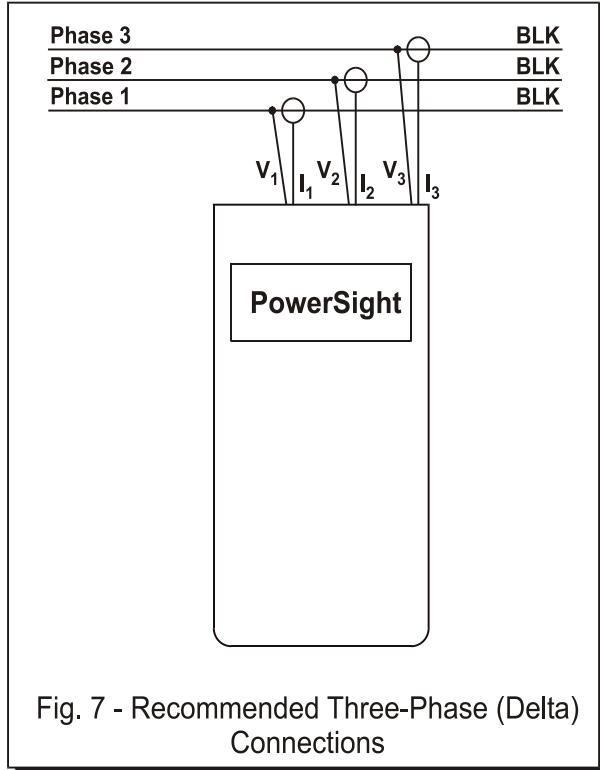
Most commercial wiring and newer industrial wiring is in this wye configuration.

Connecting to Three-Phase Three-Wire (Delta) Power

Figure 7 presents the recommended connections to a three-phase system with voltages referenced to each other instead of to neutral. This is a "delta", "phase-phase", or "three-phase three-wire" configuration.



Be sure to follow the safety warnings of the previous sections before making the connections.



Please Note: Do not connect the V_N input to anything when measuring in phase-phase measurement mode. This may affect the measurements associated with individual phases.

In a delta configuration, current flowing in each phase is due to the interaction of 2 different voltages. For instance I_1 current is the resultant of V_{12} and V_{31} . Normally, there is no way to determine what portion of the current is due to which voltage. For this reason, only the total power and total power factor have definite meaning in a delta system. However, comparing the power factors of each phase can be valuable for spotting a connection problem or problem with the load.

Delta power is common in motors and older industrial sites.

A variation of delta is “four-wire” (or “center-tapped”) delta (see figure 1D). In this configuration, if the main interest is in measuring phase-neutral voltage, then connect the neutral voltage to the neutral input for more accurate voltage readings

Connecting to Three-Phase Four-Wire Delta Power

Figure 6 presents the recommended connections to a three-phase delta system where a neutral is provided from the center of one of the phases.



Be sure to follow the safety warnings of the previous sections before making the connections.

This type of system allows delivery of both three-phase and single-phase power. The three-phase power is typically 240V for running motors. The dual single-phase power is typically 120V for running lights and small equipment, from one power service. It also provides 208V. Depending on what you intend to monitor, it may be appropriate to set PowerSight in phase-phase voltage measurement mode (to monitor three-phase loads or to look at total power) or in phase-neutral voltage measurement mode (to monitor single phase loads). Although the selection of voltage measurement mode affects what voltage levels are displayed and recorded (phase-phase versus phase-neutral), it does not affect the power and power factor calculations.

Connecting to Three-Phase Grounded Delta Power

Figure 7 presents the recommended connections to a three-phase system with one phase tied to ground. No connection is made to the neutral input. One of the phases originates from ground.



Be sure to follow the safety warnings of the previous sections before making the connections.

Connections Using 2 Current Approach

In the previous sections, the approach used to measure power has been based on determining the power of each phase and then summing them to get the total power. The 2 current approach (figure 8) allows you to determine the total power from measuring only 2 of the 3 currents and combining them with the 3 voltages of the

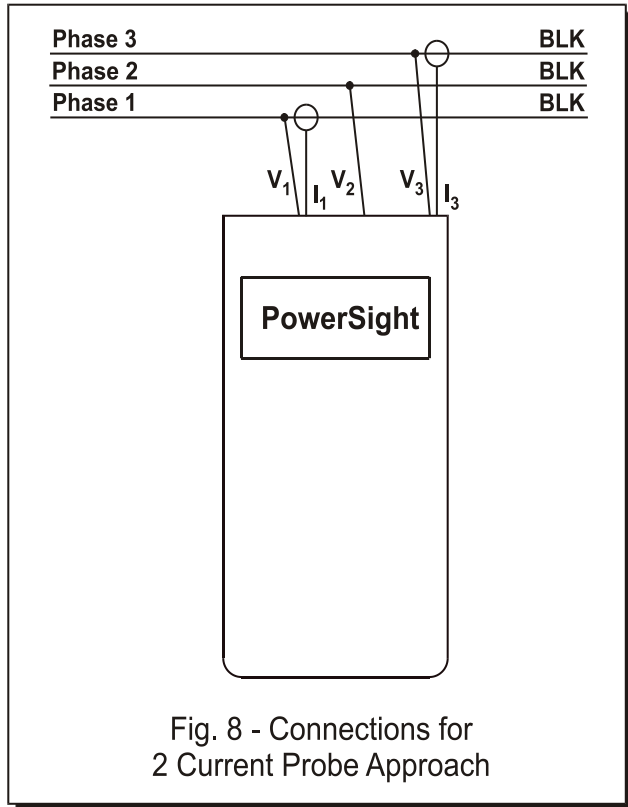


Fig. 8 - Connections for 2 Current Probe Approach

three-phase circuit. The disadvantage of this approach is that you cannot determine the power, power factor, or VA of each individual phase and, of course, you cannot record the current of one of the active phases.

A necessary use for this type of connection is to measure utility power where only two metering CTs and three PTs are provided. After hooking up to the CTs and PTs, you enter the input ratios into PowerSight (see the [Setting Input Ratios](#) section) in order to record the correct values (the values on the primary side of the transformers).

A different motivation for using this type of connection is to save time and money. By only connecting to 2 of the 3 currents, a small amount of time can be saved. The frugal user appreciates

this approach because he can save the cost of one current probe when buying a system in order to measure total power. Another motivation occurs in situations where one of the phases cannot be measured due to accessibility.

This approach is also called the “2 wattmeter approach” because it mimics how two single-phase wattmeters can be used to measure total three-phase power. The equation that it depends on is:

$W_{total} = \sum (V_{ab} \times I_a) + \sum (V_{cb} \times I_c)$. This equation is true regardless of the harmonic content of the voltages and currents present. A few words of caution are required, however. First, a volt-ohmmeter cannot be used for this calculation. That is because the equation depends on the instantaneous products of voltage and current. That is normally quite different from the product of the RMS voltage and RMS current. Second, a single-phase wattmeter should not be used for this calculation since conditions normally change second by second and hence adding the watts of two different setups will, at best, give a “feel” for the correct true power. Lastly, it is more important to make the connections correctly in this approach since an error will not be obvious and there is no way of recovering to an educated guess of the correct power reading.

Refer to the [Phase-Neutral vs Phase-Phase vs 2 Current Mode](#) section for how to operate the unit in 2 current probe mode.

Connecting to 3 CT / 3 PT Metering Circuit

Sometimes it is helpful to monitor a load indirectly, by connecting PowerSight to a metering circuit in front of the load. A few circumstances where this is the case are:

- the CTs (current transformers) and PTs (potential transformers) of the metering circuit are readily accessible for connecting to, whereas the actual load carrying cables are not
- the conductors carrying the load are physically too large for your current probes to fit around them
- the load current is too large to be read by the current probes you have
- the voltage delivered to the load exceeds the 600V insulation limit of the current probes

- the voltage delivered to the load exceeds the 600Vrms rating of PowerSight and you do not have other high voltage probes.

A typical metering circuit showing PowerSight connected is shown in figure 9. This circuit has three CTs and, if higher voltage is present, may have three PTs. It is typical for metering a three-phase four-wire wye type service. The currents flowing to the load are considered the “primary currents”. Those currents are “stepped down” by each CT to a “secondary current” according to the ratio of the CT printed on its rating plate. A typical value would be 600:5 (120:1). The output of each CT must have some burden across it for the secondary current to flow. The current probes of PowerSight are clamped around the secondary of each CT. Make sure to use current probes that are suited for accurate measurement in the 0-

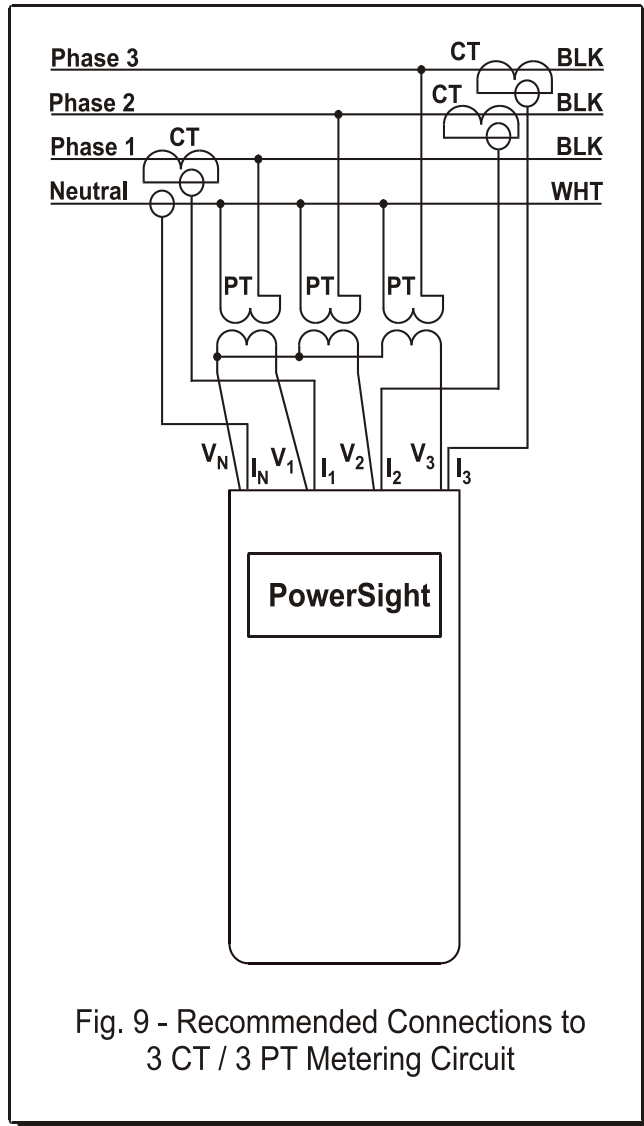


Fig. 9 - Recommended Connections to
3 CT / 3 PT Metering Circuit

current probes that are suited for accurate measurement in the 0-

5 amp range. The HA5 is best for this. The HA1000 or HA100 may be acceptable, depending on the current level.

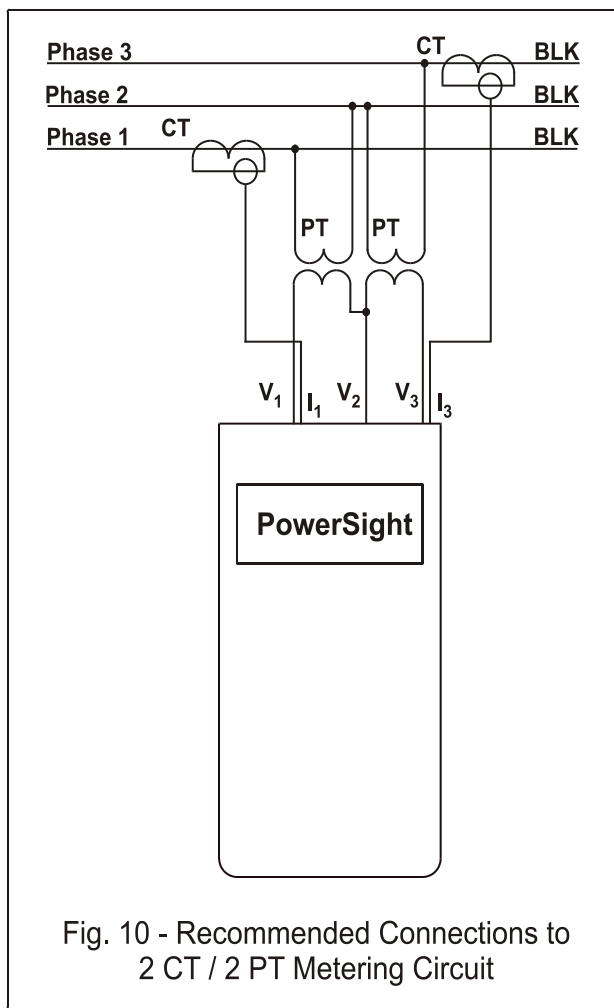
Once the current probes are attached, it is best to set the input ratios for each of the current probes (see the [Setting Input Ratios](#) section). This will allow the displayed values and logged values to reflect the primary current level instead of the secondary current level. This in turn allows accurate power and cost readings without having to multiply the results times some ratio. Remember that these ratios are reset to 1:1 whenever PowerSight is turned off.

Similarly, the PTs take a primary voltage and step it down to a secondary value. If the primary voltage is below 600Vrms, you will not need to hook up to the PTs (in fact, there will probably be none present). The ratio of the stepping down of the voltage will be printed on the rating plate of the PT. Typically this would be 2400:120 (20:1). As with the CTs, this ratio should be entered into PowerSight (see the [Setting Input Ratios](#) section) to simplify interpreting the results.

Connecting to 2 CT / 2 PT Metering Circuit

Figure 10 shows recommended connections to a metering circuit with only 2 CTs or 2 PTs. This type of metering circuit may be preferable when cost is an issue (less instrument transformers are used) or when metering a delta service with no reference to neutral. The discussion of the previous section ([Connections To a 3 CT / 3 PT Metering Circuit](#)) applies to this circuit as well, with one important

exception. If you clamp onto the CTs, rather than clamping onto each of the primary currents directly, PowerSight must be operating in the 2 Current Probe mode of operation (see the [Phase-Neutral vs Phase-Phase vs 2 Current Mode](#) section).



Connecting to Open Delta (3CT / 2PT) Metering Circuit

In the open delta configuration, two PTs and 3 CTs are available. Make the voltage connections as shown in figure 10 of the [Connections to a 2CT / 2PT Metering Circuit](#) section. For current

connections, connect the phase 1 and phase 3 probes as shown in figure 10 and attach the phase 2 current probe to the phase 2 CT. You will not need to operate in the 2 Current Probe mode of power measurement since there are 3 currents being monitored.

Connecting to Line-To-DC (LDC) Converter Accessory

The Line-To-DC Converter accessory (order either LDC2 or LDC4) converts the voltage that is being monitored into DC voltage to run and charge PowerSight. The applications of this option are:

- Electrical room monitoring where a 120V outlet jack is not available for your charger
- Monitoring where an extension cord from a 120V outlet jack would be a safety hazard
- Monitoring on a rooftop, power pole, or power pad
- Reliable charging for the meter when there is concern that an available 120V outlet jack may be switched off by other personnel
- Simplified monitoring connections (no need to think about powering PowerSight when installed inside a CASW weather-resistant case).

Figure 11 shows the correct method of connecting the LDC to PowerSight. The LDC comes with two long red input leads that end with a stackable safety banana plugs. These stackable plugs are to be inserted directly into two of the inputs of PowerSight. If you are monitoring power without a neutral, we recommend plugging them into the V_1 and V_2 inputs. If an external neutral is present, we recommend plugging them into the V_1 and V_N inputs. In any case, there needs to be a potential between them of at least 100 Vrms and no more than 500 Vrms from 50 Hz or 60 Hz power.

The LDC4 is a more powerful version of the LDC2. The LDC2 can be used with the PS2500, PS3500, and PS250. The LDC4 can be used with the PS2500, PS3500, PS4500, PS4000, and PS250.

The LDC also comes with in-line fuse assemblies plugged into the stackable plugs. These red assemblies contain 1000V fuses. They provide protection if a short should occur in the LDC. The two voltage leads that would normally be plugged into PowerSight are plugged into the loose ends of the in-line fuses.

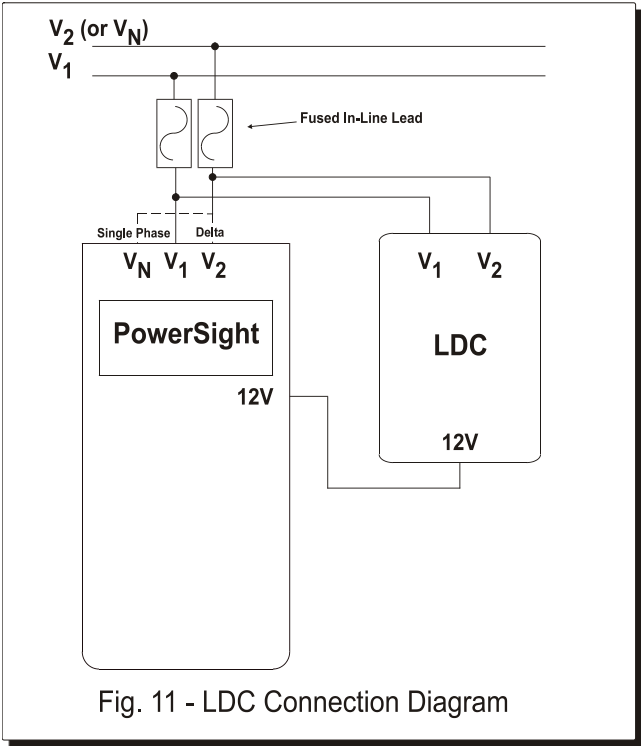



Fig. 11 - LDC Connection Diagram

At this point, PowerSight is ready to measure voltages as usual and the LDC is connected in parallel to two of the inputs of PowerSight. You may wish to remove the in-line fuse assemblies, plug your voltage leads directly into the stackable plugs, and plug the in-line fuse assemblies between the loose ends of the voltage leads and the voltage clips. This provides a connection that is electrically equivalent to the normal connection, but the fuses are physically as close to the power source as possible. The advantage of this approach is that if one of the voltage leads gets shorted to ground (perhaps from being cut by a panel door), a fuse quickly blows, providing added protection.

⚠ Note: Do not use the LDC without the in-line fuses being connected between it and the power source. The fuses are the only circuit protection for the LDC.

When the input side of the LDC is fully connected properly, plug the long DC output plug into the DC input jack of PowerSight. The

red charging indicator near the jack will light up if everything is operating and connected properly.

 **Note:** If a fuse is burned out or missing, it will appear that there is no voltage at the source. Verify that the fuses are working properly before assuming that the source is dead. Injury may occur if you wrongly assume that the source is deactivated.

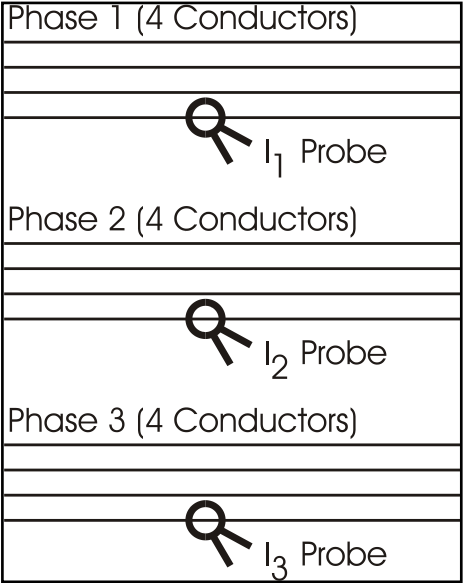
Measuring Multiple Parallel Conductors

A common problem with measuring large currents arises when the current of each phase is carried by several parallel conductors. For instance the phase 1 current may be carried in 4 parallel conductors, as are phases 2 and 3, resulting in 12 conductors to measure. In this case, the work-around is to clamp onto just one of the conductors of each phase and enter an input ratio to record the correct total current of each phase. A fast way of doing this is to enter an input ratio of 4 : 1

for each phase in the example of 4 parallel conductors. This may offer adequate accuracy for your needs. However, experience shows that although the current in each conductor of the same phase is similar in size, they are typically NOT identical.

Overcoming the problem of unequal currents in parallel cables takes a few steps to do it accurately.

1. Put a different probe on each conductor of a given phase and then viewing the currents of each probe simultaneously (see the [Checking Current Levels – Using Checkout Connections](#) section).



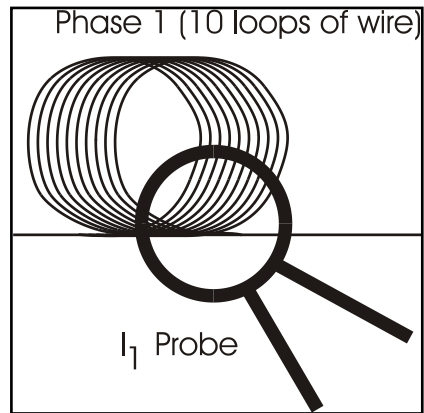
2. Start monitoring for 10 seconds or so and then stop monitoring (see the [Starting Data Logging](#) and [Stopping Data Logging](#) sections).
3. Press the [Current] key and then the [More] key four times to view the average current for phase 1 (which is actually just one of the conductors of one of the phases). Write it down.
4. Press the [Current] key and then the [More] key four times again to view the average current for phase 2. Write it down.
5. Repeat these actions in order to get the average current of each of the conductors for the same time period.
6. Find the total of the average currents of each of the conductors of the same phase.
7. Divide the total of the average currents into the average current of conductor you wish to connect to during the actual monitoring session. This yields the portion of the total current that flows through the conductor that will be measured.
8. Set the input ratio of the phase being measured to the number determined in the previous step. For instance if the total of the average currents was 1000 amps and the average current of the probe on the conductor you wish to use during the actual monitoring session had an average of 26 amps, then enter an input ratio for that phase of 0.26 : 1.
9. Perform steps 1 through 8 for each phase.
10. Now connect each probe to the chosen conductor of each phase and begin monitoring. All the readings and logged values will be substantially correct.

Measuring Currents Below the Range of the Current Probe

A problem with measuring smaller currents arises when the current to be measured is below the range of the current probe. In such cases, the current may not be read or the reading may be inaccurate. In addition, any waveforms that are captured will have excessive noise on them.

If you are using a flexible current probe, you can simply wrap it around the conductor twice in order to double the magnetic field strength. This can get it in the measurement range and it boosts the signal to noise ratio. If you use this method, set the input ratio for the current probe to 1 : 2 (see the [Changing Input Ratios in PowerSight](#) section).

If the current to be measured is small, it may be acceptable to open the circuit and insert an extra length of wire that is wound up into a coil of 10 turns. Clamping your current probe around this extension coil will boost the signal strength 10 times and allow accurate reading of small currents. If you use this method, set the input ratio for the current probe to 1 : 10 (or however many turns there are in the coil).



Turning PowerSight On

Connecting to Power

Although PowerSight comes with Ni-Cad rechargeable batteries, those batteries are intended to keep PowerSight functioning during limited power failures and to allow quick measurements without the bother of always having to find a 120 Vrms source. When fully charged, the batteries can power the unit for up to 10 hours.

For longer usage and to recharge the batteries, your unit has been supplied with a wall-mount power supply. This power supply cannot be used with the model PS3000 and the PS3000 power supply cannot be used with the PS2500. To use this power supply, simply plug it into any 120 Vrms source (use the model CHG4 charger for 120Vrms and the model CHG1 for 220V) and then plug its barrel-type plug into the 12 VDC input jack on the right side of PowerSight. If charging voltage is available, an LED indicating light will immediately shine through the hole located to the right of the input power jack. Allow 12 hours to fully charge the unit (though 8 hours is adequate for most usage).

If you wish to operate PowerSight without being tethered to a power outlet, the Line-to-DC converter accessory (order LDC2 or LDC4) offers the ability to power a PS2500 directly off the line voltage being monitored. It works with 50 Hz and 60 Hz power, operating off 100 to 480 Vrms input, single-phase or three-phase. All this versatility is obtained without setting switches or changing connections. The LDC is especially convenient when monitoring in areas where 120 V outlets are not readily available. The LDC4 is a more powerful version of the LDC2 and can power any of our meters (except the PS3000).



If you need to operate the LDC4 off of 600V phase-to-phase service, recommended procedure is to connect one input to a hot phase and the other input to neutral (if present).

The internal batteries are automatically charged when the wall-mount supply is connected to the unit (or when PowerSight is connected to the LDC accessory).

The internal batteries are not to be replaced by the user. Only batteries provided by Summit Technology are to be used in PowerSight.

Turning PowerSight On

Simply press the green on/off button at the lower right of the keypad on the front panel and PowerSight will be operating (pressing the button again, turns the unit off). The message that the meter is analyzing the connections to the meter will appear for a few seconds and then the results of the analysis will appear. Please note that turning PowerSight on does not automatically start monitoring and logging. Refer to the [Putting it all Together \(Monitoring for the First Time\)](#) section for how to start monitoring and logging.

Turning PowerSight Off

To turn PowerSight off, simply press the the green on/off button at the lower right of the keypad on the front panel. This provides a graceful software/firmware shutdown. If pressing the button briefly does not turn the meter off, press and hold the push-button down for 3 seconds to force a hardware shutdown. If this is a recurring problem, contact support@powersight.com.

Communicating with PowerSight

Introduction

The PS2500 uses Bluetooth wireless communications to communicate with your PC. There are several advantages to this method:

- safety enhancement - since there are no metallic connections between the meter and your PC (part of what allows your meter to be rated for 600 V Cat IV, the highest safety rating in the industry)
- simplicity – no communications cables are needed
- reliability – no cable, means no forgotten cables at the site and success in on-site setup and download
- reliability – no physical connections are needed, hence physical connection problems are minimized
- reliability – the Bluetooth communications protocol provides for robust error-free communications
- flexibility – communicate with the meter from up to 30 feet away.

The disadvantages are:

- the Bluetooth connection must first be made at the operating system level before the PSM application can make the application-to-meter connection
- your PC may not have Bluetooth capabilities, in which case you need to add a USB Bluetooth adapter
- turning your meter off and on may require re-establishing the Bluetooth connection at the PC operating system level
- the present implementation of Bluetooth communications in Windows is less straightforward than USB or RS232 communications.

The next sections assume that a Bluetooth adapter is already installed in your PC. Summit Technology sells an adapter (order: BTA), but most Bluetooth-USB adapters will work. Follow the instructions that come with the adapter to install the software. If you have our BTA adapter and run the Windows Vista operating system, don't install the Bluetooth software, Vista has drivers for it and automatically configures for it.

Step 1: Connecting to the Meter at the Operating System Level

The PowerSight meter and your PC must be turned on before the first step can occur. As soon as your meter is on, the Bluetooth adapter in the meter is energized and can respond to broadcasts from your PC's Bluetooth adapter.

Different implementations of Bluetooth have different messages and screens for establishing communications, but they all follow a similar flow. First the Bluetooth device is located, then it is paired, and finally a serial communications channel is established with it.

Your Bluetooth software will probably have a Bluetooth icon shortcut on the desktop or at the bottom of the screen. You will need to click on it and click on something like "My Bluetooth Devices". Click on it and if you have previously communicated with your meter, an icon for your meter will probably appear. It will have a name of "PS2500-nnnnn", where "nnnnn" is the serial number of your meter. If it does not appear, click on an option like "Discover" to find any Bluetooth devices that are in range. After as much as 1 minute, all Bluetooth devices that are detected and available are displayed on the screen. An icon for your meter should be one of them.



Double click on the icon for your meter. If the meter has been "paired" with your computer, you will see an icon of a serial cable connector labeled something like "SPP Slave on PS2500-nnnnn", where the last characters are the serial number for your meter discussed above. Double click on this to establish a communications path between Windows and the meter (or right-click and click on "Connect"). The name of the communications channel to use with your meter will be displayed (such as COM7). If the meter has not been paired, you will be asked to enter a PIN code. Enter "0000" (four zeros) and click on "Initiate Pairing". Through pairing, your computer sets up a communication channel with the meter. If pairing is successful, you may be asked what service you wish to access on the meter. If so, you will click the box for "SPP Slave". A screen will open identifying a COM Port that is being assigned to communications with the meter (such as

COM7). Remember this port identifier; you will need it for the next step, connecting to your PSM software.

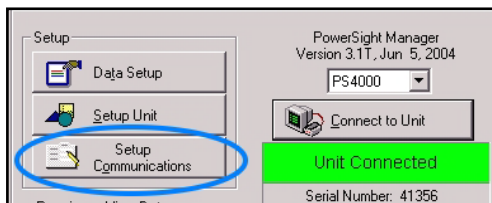
Note: Whenever you close PSM or turn your PowerSight meter off, you will break the connection between your meter and Windows. Once your meter is turned on, you will need to double click on one of the Bluetooth icons on your desktop to re-connect with Windows and then attempt to re-connect to the meter via PSM. If you are asked to enter a PIN, enter “0000” (four zeros). Other than this awkwardness, you will find Bluetooth wireless communications to be very beneficial.

Step 2: Connecting to the Meter in PSM (the Application Level)

Open your PSM software application. If it connects properly, you will see a green box appear with the words “Unit Connected” in it. If this automatic connection failed, click on the Setup Communication button and set the Serial Port for the COM port that is assigned the connection with your meter (such as COM7). Click OK and the connection between the application and your meter should be successful. Normally, you will not have to change this port assignment again.

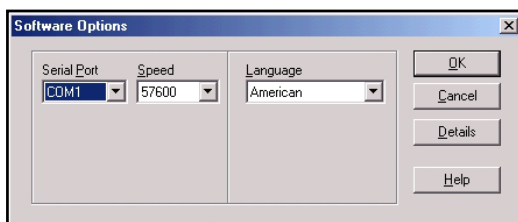
Now that a Bluetooth communications channel has been established by the operating system, PSM can be directed to use that communications channel in order to talk with the meter.

Open your PSM software application. If it connects properly, you will see a green box appear with the words “Unit Connected” in it and you are done. If not, click on the “Setup Communications” button. In the resulting dialogue box, click on the “Serial Port” box and select the COM port that has been dedicated to your meter by the operating system (see the previous section). Also verify that the communications rate is set for 57.6 kbps. Then click on “OK”. For instance, if the Bluetooth software in your computer advised you that COMM7 was dedicated to the Bluetooth communications



with your meter, then click on the COM7 entry and then OK. PSM will automatically attempt to connect to your meter at this point. If it is successful, the communications status

box will display a yellow banner with the words “Attempting to Connect”. After a few seconds, the banner should turn green with the words “Unit Connected” in it. At this point, PSM is in direct communications with the meter.



Using Removable Memory Cards

Introduction

Your meter has adequate internal memory storage for most normal operating situations. However, the ability to use a removable memory card has several significant advantages:

- extra storage for very long monitoring sessions
- faster transfer of data from meter to computer
- backup of data that is in the meter and on your computer
- non-volatile storage of data about specific jobs or equipment

Your meter is designed to use SD or MMC memory cards. This capability provides essentially unlimited storage capabilities for your meter. Your meter is fully operational and usually has sufficient storage without the removable memory.

Installation of the card is simple. Simply push it into the slot on the right side of the meter. Insert it so that the top of the card is visible as you look down on the face of the meter. It cannot insert fully if it is upside down. To remove the card, you can leverage it out with a fingernail or grasp between finger tips and pull (or use needle nose pliers if wearing gloves).

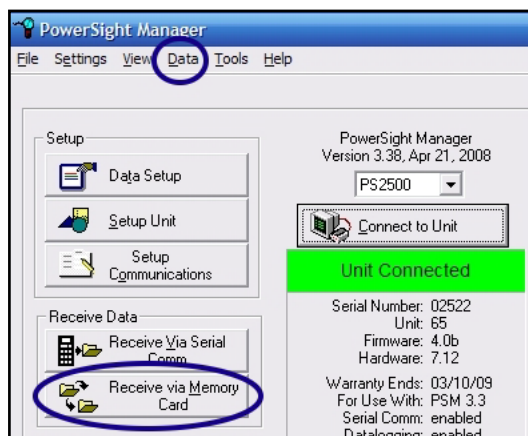
Operation and Limitations

- Whenever a memory card is inserted into your meter, it automatically gets updated with all the data that is on the meter
- When the card is inserted, the meter will display “Memory Card Present”. When it is removed, the display will be “Memory Card Removed”.
- If the display ever says “Insert Memory Card Again”, remove the card if it is already mounted and then insert it firmly back into the slot.
- Do not insert or remove a memory card while the meter is monitoring (this limitation will be removed when supporting firmware becomes available and will be a free upgrade).

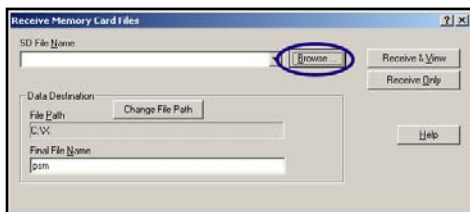
- Generally, any SD or MMC memory card that is from 64 MB through 2 GB in size will work in the meter. If it does not, the meter will display “Incompatible Format”.
- The meter will not write over existing files and pictures on the memory card, so memory cards from cameras etc can be used when needed.
- Presently the meter only reads cards that are formatted using the FAT16 (or simply, the “FAT”) file system. Cards below 64MB will typically use the FAT12 system, and will need to be reformatted to FAT16 in order to be used in your meter. Cards that are 4 GB and above use the FAT32 system and cannot be read by the meter (this limitation will be removed when supporting firmware becomes available and will be a free upgrade).
- Cards between 32 MB and 4GB that have been reformatted will generally not work with your meter unless they are reformatted again to FAT16 (the default format for Windows is FAT32, so a reformatted card is usually FAT32).
- Do not change the location of the files and folders that are automatically created when the card is inserted into the meter. Any changes will likely make the data impossible for your PowerSight Manager (PSM) software to locate them.

Using the Memory Card Data with PSM

After you have installed the memory card into a memory card reader in or attached to your computer, click on the “Receive via Memory Card” button of the main menu of PSM (or click “Data”, then “Receive Data via Memory Card”). You will be asked to select what data you wish to use, via the “Browse”



button. Click on the drive number assigned by your computer to your card reader and locate the data of interest. Browse the card to find the data you want to receive. The data is organized in the following hierarchy of folders:



- Serial Number – this folder is in the root directory of your card. Its name is the serial number of the meter that the data came from. If the card has only been used with one meter, there will be only one of these folders. If the card has been inserted into many meters, there will be many of these folders
- Monitoring Date/Time – this folder is created whenever the meter starts monitoring. It is located in the Serial Number folder. If the meter has had many monitoring sessions, there will be many Monitoring Data/Time folders, each with its own unique name. The format of the name is “YYMMDDhhmmss” (“YY” is the year, “MM” is the month, “DD” is the day, “hh” is the hour, “mm” is the minute, and “ss” is the second that monitoring began. This format allows sessions to be listed in order that they were created.

The “raw” SD card files are in a condensed format that PSM must convert into a normal file type. The default filename to be created is “psm” with the appropriate file extension (such as psm.log for a data log). You can override this default name by typing the desired name into the “Final File Name” box. The folder location of the converted file appears in the “File Path” box. You can override this location and the path you enter becomes the new default path.

Verifying Connections Using PowerSight (SureStart™)

Importance of Verifying Connections and Wiring

After connecting to power, it is wise to check that everything is connected correctly and that the wiring of the facility is correct. There are two primary methods for doing this. You may either send waveforms from PowerSight to your PC and visually check that all connections are correct and all signal levels and shapes appear correct (see the [Verifying Connections using PSM](#) section), or you can use the patented SureStart™ feature within PowerSight to do this more quickly and more reliably.

The importance of having all connections and settings correct cannot be overstated. If connections are not correct, important decisions may be made based on erroneous data or logging sessions lasting several weeks may have to be repeated. Common connection and setup errors and their negative results are:

- **Current probe attached backwards.** Normally, if current probes are attached backwards, PowerSight senses this and turns them around in software so you still get the correct power readings. This is one of the features that makes PowerSight easy to use. However, if you view waveforms and a current probe is backwards, that current will appear upside down (180 degrees out of phase). More importantly, if PowerSight is in the Positive/Negative Power measurement mode, a backwards current probe will have a disastrous effect on the power, KWH, and cost readings (typically the display will present 1/3 of the correct value).
- **Voltages and currents of the same phase not paired together.** If the V₁ voltage probe is connected to the phase 1 voltage, but the I₁ current probe is attached to the phase 2 or phase 3 current, large errors will occur in measurement of power and power factor. For instance in a perfectly balanced three-phase system with 0.92 power factor and no harmonics, if the connections of the I₁ and I₃ probes are switched, the true

power will fall 33% and the power factor of each phase will become .12, .92, and .80.

- **Current probe not fully connected to PowerSight.** The current probe connector needs to be fully seated within its socket. If it is not, the reading may be 0 (resulting in a loss of about 1/3 of the power of a three-phase system), the probe may be misidentified (resulting in current readings of a fraction or a multiple of the correct value), or the display may say “I1 input too large” and PowerSight will refuse respond to any keypad button.
- **Voltages not connected.** If one or more of the voltage probes is not connected properly, test results for voltage, power, and power factor will be very inaccurate. Typically power will be off by much more than 30% in a three-phase system
- **Circuit not energized.** If one or more of the phases is not energized, then any logging session will be a waste of time.
- **Incorrect frequency measurement mode.** If PowerSight is set for fixed 50 Hz operating mode but the circuit is actually 60 Hz, all measurements will be erratic and will vary from second to second. Similarly, if it is set for fixed 60 Hz, but you are measuring a variable speed drive operating at 55 Hz, the results will be erratic and vary from second to second.
- **Non-standard voltages or phase angles.** If there are unusual voltages or inter-phase angles, the circuit that is being monitored is suspect. There may be a problem with the equipment or power service that should be understood before a logging session begins.

SureStart™ is a patented technology developed by Summit Technology that does a better job of identifying connection and setup problems than you can expect an expert to do. To use the SureStart feature, press the [Verify Connections] key on the top row of the keypad. It does a complete analysis of the power signals and connections that are present and displays the results. Alternatively, you can use your PC to visually checkout if all connections are accurate. To do this, refer to the section on [“Verifying Connections using PSM”](#).

The SureStart feature briefly reports its findings in four groups of information. These are:

- **Identify System** – after analyzing all the voltage and current inputs, PowerSight identifies what type of system is connected.
- **Error Summary** – after analyzing connections, the number of possible errors detected is displayed, appearing for one second, each 6 seconds.
- **Identify Errors** – If errors were detected, pressing the [Next] key will result in each error being identified on the display. Press the [Next] key repeatedly to advance through the list of errors.
- **Provide Error Diagnostic Information** – for each error message that is displayed, the background measurements that indicate the error are displayed once each 6 seconds.

Once you have proceeded through this sequence of identifying the system and possible errors and have corrected the problems, you can proceed knowing that the power wiring and PowerSight's connections to it are probably correct.

Identifying the Power System

After the SureStart feature is done analyzing the inputs, the type of power system that is present is displayed on PowerSight. Check that you agree that PowerSight has identified the system correctly. If it hasn't, there is probably a problem with the system or the connections. The general types of systems that are identified on the top line of the display are:

- Single-phase
- Split-phase (two-phase)
- Three-phase
- 4-wire delta.

For each of those general systems, the display indicates whether voltages will be displayed and recorded as phase-to-neutral ("p-n") or phase-to-phase ("p-p"). If the wrong voltage mode is selected, it will not affect the power readings. If you wish to change it, use the [Measure Mode] key to do so or use PSM to change the data logging setup.

The bottom line of the display tells the specific voltage type of the general system that has been detected. For instance, a typical display is “277 / 480 V (p-n, p-p)”. This means the nominal voltages present are 277 Vrms phase-neutral and 480 Vrms phase-phase. If the voltages are not of a standard magnitude, “Non-Standard” is displayed on the second line.

Error Summary

When the display reports the type of system that is detected, it also advises, once each 6 seconds, how many errors it suspects there are. For instance it might report “maybe 3 errors” or if all is well, it may report “no errors detected.”

The language of these messages is not definite, because in the real world of power, there may be many possible connection explanations for a given set of measurements. For instance, if you hook up to a 3-phase power system, but have your current probes attached off one position to the left (that is, the I₁ input is actually I₃, the I₂ input is actually I₁, and the I₃ input is actually I₂) and each of the probes is attached backwards, the readings that result may look correct (they will have been shifted 60 degrees). So PowerSight might report “no errors detected”, and with good reason, but the connections are very incorrect. Similarly, if all of the connections are correct, but the three phase circuit has a phase lead of +30 degrees (strongly capacitive), PowerSight will report that there may be 2 errors, because a phase lead of +30 degrees is so very unlikely (hence it displays that there “may be” errors). You may need to use some judgment, but in general, the SureStart feature will make a judgment of what's right and what's wrong and its judgment will be correct under most circumstances. We are proud of this feature.

Identifying Errors

After the system type is identified, the number of possible errors that were detected is displayed once each six seconds. Pressing the [Next] key repeatedly will step through each of the errors. It is important to note that when the voltages look reasonable, PowerSight assumes that they are connected to the correct phases. Thus if the voltages are rotated to the right one position,

but the current probes are connected correctly, PowerSight will report that the current probes are rotated left one position. Although assuming that the voltage connections are not rotated identifies the phases incorrectly, the total power will be correct and the individual readings will be correct. The phases will be mislabeled.

Another thing to consider is that in some cases, several possible explanations for the same error are listed as separate errors. In these cases, the potential errors are listed in order of how likely they are to be the correct explanation. An example of this would be 2 errors, the first being that I1 and I2 have been switched and the next error is that I3 is backwards. Only one of these errors actually exists and the more likely one is that I1 and I2 are switched. In these cases, fix the error that seems most likely to you to be correct and run SureStart again.

There are over 70 different error types reported. The general types, their explanations, and the corrective actions required are:

- Probe not connected. The probe that is identified appears to not be connected to PowerSight. Check that the probe is firmly connected to both PowerSight and to the power system.
- No current. The probe that is identified is connected to PowerSight, but no current is detected. This may indicate that the load is turned off or that the probe is not connected around the cable properly or that it is not fully seated into its jack within PowerSight.
- Probe backwards. The current probe that is identified is probably backwards. Just turn it around and clamp it on the conductor.
- Probe switched. The identified probes seem to be switched. Simply trade their connections.
- Signals attached to wrong jack. The identified signals seem to be connected to the wrong inputs. Connect the probes to the correct signals.
- Signals are imbalanced. It appears that the magnitude of one phase is improperly large or small compared to the others. Check that the connections are correct and that the system type was identified correctly.
- Two inputs are the same. It appears that the identified probes are connected to the same signal. Check the connections and that the system is correct.

- Two inputs have the same phase angle. The identified probes are of the same phase, but have different magnitudes. Check that the system is correct.
- Non-standard phase angle. The phase angle between the identified phases is incorrect for the identified system. Check the system.
- Incorrect phase lag. The phase lag of the identified phase is not correct. The probe may be backwards or the voltage or current is connected to the wrong phase.
- Wrong phase sequence. It is assumed that a sequence of 1-2-3 is correct and 3-2-1 is backwards. But 3-2-1 may be correct for your system (for instance to have a motor run “backwards”). If the sequence is wrong, either two voltage leads are switched or 2 current probes are switched while no voltage is present.
- Non-Standard voltage. The voltage levels are outside of normal operation range of normal power systems. It may be correct, or there may be a problem with the system, or the wrong system has been identified.
- No signals detected. The operating frequency may be out of the measurement range of PowerSight, or nothing is connected, or the system is deactivated.
- Wrong frequency setting. PowerSight is expecting one frequency, but it is measuring another. The display of this error tells the frequency mode that PowerSight is set for and then displays the actual frequency that is measured. Use PSM to set the frequency mode to the correct setting.

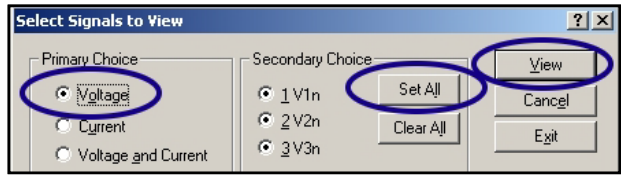
Checking out Connections using PSM

The PowerSight Manager (PSM) software is included in the cost of your PowerSight meter. You can use it to visually determine if the system connections and levels are correct. Use PowerSight's patented [SureStart](#) feature for a fast reliable approach to checking that connections and settings are correct.

Checking Voltage Levels – Using PSM

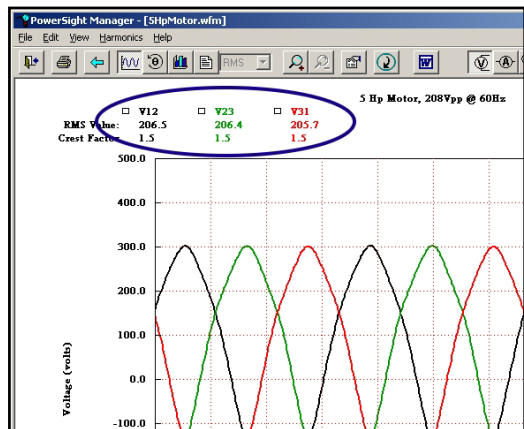
As an alternative to using SureStart™, you can capture a waveset (a set of 7 time-coincident waveforms) and analyze it graphically. Refer to the [Saving Consumption Waveforms](#) section if you do not know how to capture waveforms with the meter.

Once a waveform has been captured, at the main menu click on “Receive



Waveform”, then “Receive and View”. A waveset will be transferred from PowerSight to PSM and then a dialogue box opens asking you to choose what signals to view. Make your primary choice “Voltage”, and your secondary choice “Set All”. Next click on “View”.

Now that you are viewing the voltage waveforms, there are several questions that need to be answered. First of all, is the voltage measurement mode correct? If the measurement mode is phase-neutral, all measurement labels at the top will be V_{1N}, V_{2N}, and V_{3N}. The first letter after the “V” is the phase that is connected to and the “n” stands for

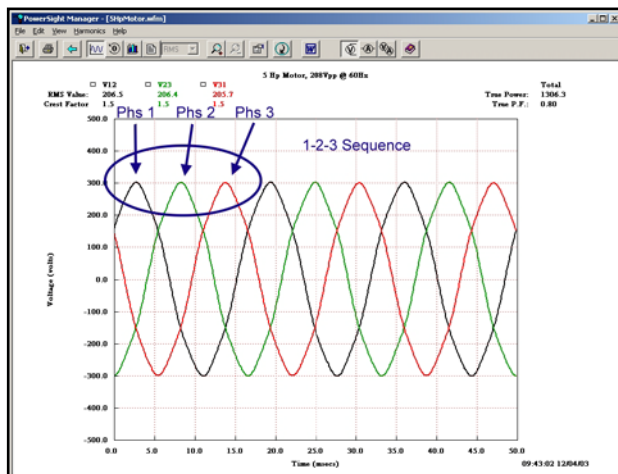


neutral. If no neutral is connected to PowerSight, this measurement is in reference to the neutral point between all the phases that are connected. If the measurement mode is phase-phase (as shown in the example), the labels will be V_{12} , V_{23} , and V_{31} . V_{12} is the voltage potential between phases 1 and 2. Changing the measurement mode has a large effect on the size of the voltage readings. For instance, in a three-phase 120 volt phase-neutral (wye) system, the voltage measurements in phase-phase mode will be 208 volts ($120 \times \sqrt{3}$). Similarly, a three-phase 480 volt phase-phase (delta) system will display 277 volts ($480 / \sqrt{3}$) if it is measured in phase-neutral mode. How to change the voltage measurement mode is described in the [Phase-Neutral vs Phase-Phase vs 2 Current Mode](#) section.

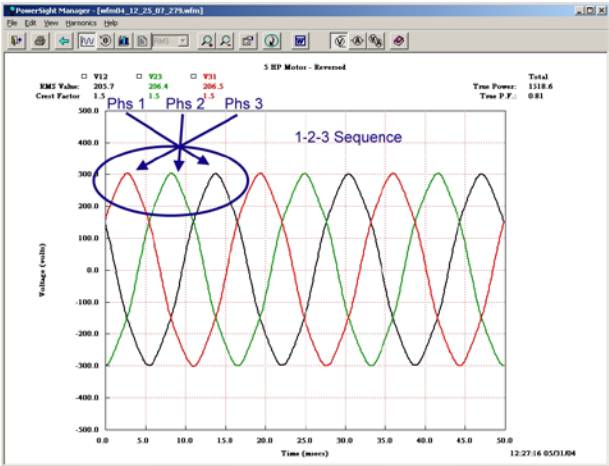
Next, are the sizes of all three phases about the same (except when connected to a 4 wire delta while in phase-neutral measurement mode)? Are they the expected size? The RMS value of each waveform is listed in the heading of the graph (such as “ V_{12} ” in the example with “469.2” beneath it, indicating that $V_{12} = 469.2$ volts).

Check Voltage Phase Sequence – Using PSM

While still viewing all voltage waveforms of a three-phase system, notice in what order they reach their peak value. Normally, the order should be 1-2-3. In other words the highest level of the V_{1N} (or V_{12}) waveform will be followed next by the highest level of the V_{2N} (or V_{23}) waveform, which will be followed by the highest level of the V_{3N} (or V_{31}) waveform (see the example).



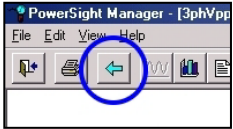
An order of 2-3-1 or 3-1-2 is the same as an 1-2-3 sequence; the reference point just starts at a different place (for instance 2-3-1 is just a portion of the continuing sequence of 1-2-3-1-2-3).



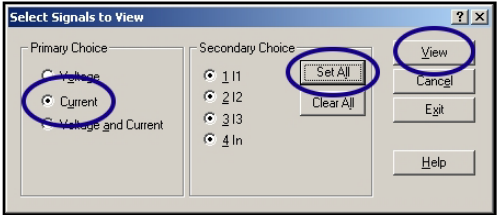
Sometimes an order of 3-2-1 is correct. Some utilities deliver power in that sequence and sometimes a motor will be connected in that manner to make it spin “backwards”. An order of 2-1-3 or 1-3-2 is the same as 3-2-1, the reference point just starts in a different place (for instance 2-1-3 is a portion of the continuing sequence of 3-2-1-3-2-1).

Checking Current Levels – Using PSM

Next click on the blue “Back Arrow” icon and select “Current”, “Set All”, and “View”. Now that you are viewing the current waveforms, there are several questions that need to be answered.



First, are the sizes of each of the three phases reasonable (depending on the type of load, currents of each phase may be very similar or fairly different)? The RMS



value of each waveform is listed in the heading of the graph (such as “I1” with “136.5” beneath it, indicating that $I_1 = 136.5$ amps), similar to how they are presented for voltage as seen in the [Checking Voltage Levels](#) section. Also check the shapes of the current waveforms. Some of the more common current

waveforms that may be seen are shown in the [Checking Phase Lag – Using PSM](#) section below.

Checking I Phase Sequence – Using PSM

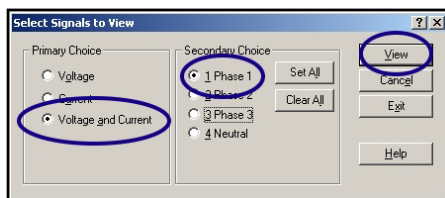
While still viewing all current waveforms of a three-phase system, notice how they reach their peak value. Each of the peaks should be the same distance from each other (similar to as shown in the Checking Voltage Sequence – Using PSM section). This even spacing must continue across the screen. In a three-phase system there will be a constant 120 degrees apart (5.5 msec for 60 Hz, 6.3 msec for 50 Hz). If one or two of the current probes is backwards, the peaks will not be evenly spaced. If that is the case, determine which probe can be turned around to get the spacing correct. After turning it around and verifying that the spacing is now correct, determine in what order the currents reach their peaks. This sequence must be in the same order as was seen for the voltages. If they are not, swap two of the probes. This will correct the phase sequence. Verify once again that the spacing between them is still correct. If not, repeat the instructions of this section.

Checking Phase Lag Angle – Using PSM

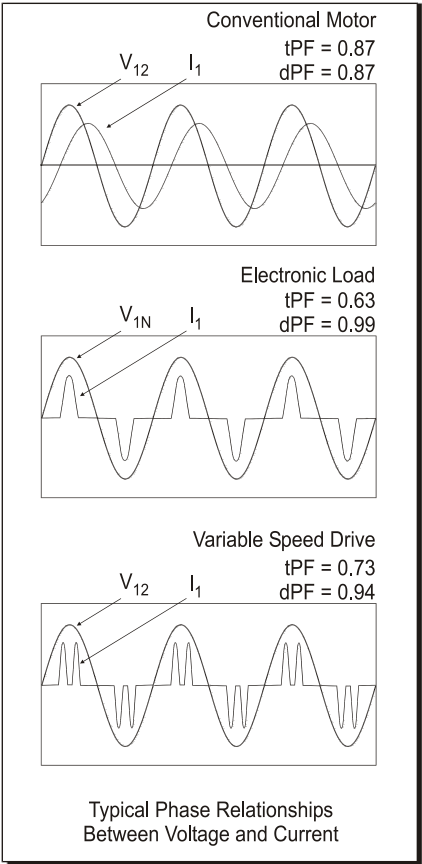
When viewing the voltage and current waveform of a given phase, you will notice a timing relationship between the two waveforms (refer examples below). The point at which the current reaches its peak may lead or lag the peak of the voltage by as much as 90 degrees (90 degrees at 50 Hz is 4 msec, at 60 Hz it is 4.2 msec). Typically current either lags the voltage or it may slightly lead it.

By the time you have gotten to this test, you have verified that the voltages and currents are reasonable sizes and that their sequences appear to be correct.

Now select a view of “voltage and current” and “phase 1” only. Check how much time passes between the peak of the voltage and the peak of the current. It must be within



90 degrees. Next select a view of “phase 2” only and then “phase 3” only. In each case, note the time delay between the peak voltage and the peak current. It should be close to the same. If one current leads voltage and the other two lag voltage by different amounts, then two of the voltage or current probes are probably switched. If the delays are the same for all phases, but they are more than 90 degrees, then the current probes are probably not matched to the correct voltages probes and will need to be moved without changing the phase sequence.



The “Next” Button

Overview

The PS2500 has only one control, the [Next] button. It is located to the left of the On/Off switch on the front of the meter. Pressing the button moves the display forward in its sequence of messages.

When the PS2500 first powers up, the connections are analyzed and the results are presented on the display. This is explained in detail in the [“Verifying Connections using PowerSight”](#) section. The [Next] button is pressed repeatedly to move through these messages.

Following the analysis of connections, pressing the display presents a series of measurement summaries and then administrative data. If the logging start mode is set for “start when signal present”, and a voltage or current signal is present, logging will automatically start at this point.

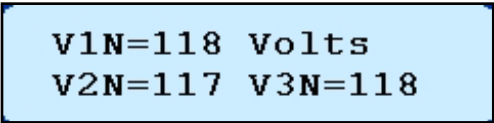
The remainder of this section explains the various measurement summaries and administrative data displayed on PowerSight.

Voltage Summary

This display shows the present values of voltage for each phase.

All measurements are in volts RMS. If higher voltages are present, “K” is added to indicate

thousands of volts. For instance V12=12K means that the voltage between phases 1 and 2 is 12,000 Vrms.



V1N=118 Volts
V2N=117 V3N=118

To conserve display space, the summary for the third phase does not have “V” displayed. Thus, “3n=277” means V3n is 277 Vrms.

The voltage summary is updated once per second. Averages, maximums, and minimums need to be obtained from the data log. For more information on voltage, see the section “[Voltage Measurements](#)”.

Current Summary

This display shows the present values of current for each phase and neutral. All measurements are in amps RMS. If higher currents are present, “K” is added to indicate thousands of amps. For instance I1=12K means that the current of phase 1 current is 12,000 Arms. If it appears that a current probe is not attached, “NA” will be reported for that measurement.

I1=204	I3=246
I2=171	IN=0.00

The current summary is updated once per second. Averages, maximums, and minimums need to be obtained from the data log. For more information on current, see the section “[Current Measurements](#)”.

True Power (KW) Summary

This display shows the present values of true power in each phase and the total true power. All measurements are in watts. If higher powers are present, “K” or “M” is added to indicate thousands or millions of watts. For instance W1=12K means that the power of phase 1 is 12 KW or 12,000 watts. Or Wt=36K means that the total power of all phases combined is 36,000 watts. If a current probe is not attached, “NA” will be reported for the power for that phase.

W1=12 K	W3=16 K
W2=11 K	Wt=38 K

The power summary is updated once per second. Averages, maximums, and minimums need to be obtained from the data log.

For more information on true power, see the section "[Power Measurements](#)".

Apparent Power (KVA) Summary

This display shows the present values of apparent power in each phase and

VA1=24 K 3=29 K
VA2=20 K t=73 K

the total apparent power. All measurements are in VA. If higher powers are present, "K" or "M" is added to indicate thousands or millions of VA. For instance VA1=12K means that the apparent power of phase 1 is 12 KVA or 12,000 VA. Or t=36K means that the total power of all phases combined is 36,000 VA. If a current probe is not attached, "NA" will be reported for the VA for that phase.

To conserve display space, the summaries for the apparent power of phase 3 and the total apparent power do not have "VA" displayed. Thus, "t=2770" means total apparent power of all phases is 2770 VA.

The apparent power summary is updated once per second. Averages, maximums, and minimums need to be obtained from the data log. For more information on apparent power, see the section "[Power Measurements](#)".

True Power Factor Summary

This display shows the present values of the true power factor of each phase and the total true power factor. All measurements are from 0.00 to 1.00. For instance PF1=0.92 means that the true power factor of phase 1 is 0.92.

PF1=1.00 3=1.00
PF2=1.00 t=0.13

To conserve display space, the summary for the true power factor of phase 3 and the total true power factor do not have "PF" displayed. Thus, "t=0.82" means total true power factor of the load is 0.82. If a current probe is not attached, "NA" will be reported for the true power factor for that phase.

The true power factor summary is updated once per second. Averages, maximums, and minimums need to be obtained from the data log. For more information on true power factor, see the [“Power Factor Measurements”](#) section.

Logging Summary

This summary is actually a collection of three separate displays that appear in succession over and over.

They tell the elapsed time since logging started, the time remaining before the log fills up, and a combination of the number of records stored and the total record capacity of the meter. Each of the 3 displays appears for 2

seconds before being succeeded by the next display in order.

The time remaining and number of record capacity are controlled by your selection of variables to be logged.

The default is 6.6 days and 4050 records when logging is started. The

number of records stored is controlled by your setting of the logging period. The default is one record recorded each 3 minutes.

Elapsed Time
0:00:36

Time To Fill Log
0:46:27

Records Stored
275 of 1044

This summary of displays is very helpful during logging to verify that logging was setup and is proceeding as planned. It also provides valuable awareness of when the log is going to be filled.

Time Summary

This summary is actually a collection of three separate displays that appear in succession over and over.

They tell the present time, the time or mode that will initiate

Present Time
1/01 22:59:35

logging and the time or mode that will end logging. Each of the 3 displays appears for 2 seconds before being succeeded by the next display. The present time is set using "Setup Unit" of the main menu of the PSM software. The time or mode for starting or stopping logging is set by you, using the "Data Setup" option of the main menu of the PSM software. Logging can be set to start at a specific time and date or when the unit is turned on while power is present or manually via PSM or via the [Next] button. Logging can be stopped at a specific time and date or when the log is filled or manually.

**Log Start Time:
Manual Start**

**Log Stop Time:
Manual Stop**

Identifying the Meter

Following display of the time summary, a summary of information identifying the meter is displayed. There are three important pieces of information:

**Ser # 02507
FW:4.17 HW:7.11**

- Serial number of the unit (its unique identity)
- Firmware revision level (what level of software is active within PowerSight)
- Hardware revision level (what level of hardware compatibility it is).

These identifiers are important in any communications with Summit Technology about your meter.

Once every six seconds, an additional screen is displayed showing what options are active in the unit. An example of this display appears at the right.

**Ser # 02507
Options: HLS456M**

This example display indicates that the Harmonics Analysis Option ("H"), data logging ("L"), serial communications ("S"), and extended memory ("M") are active. This information may be important in communications with Summit Technology.

Identifying Operating Parameters

Following identifying the meter, a summary of operating parameters is displayed.

An example of such a display is shown below.

Warranty Expires 6/24/09 00 3.3
--

The date of the example, 6/24/09 is the date that the warranty expires on the product. Contact Summit Technology to extend the warranty prior to that date since re-instating the warranty after that date will cost an additional amount. The next number on the bottom line, "00", is for the use of Summit Technology personnel. The final number, "3.3", is the highest level of PowerSight Manager software that the unit is presently eligible to work with.

Measurement Types

Voltage Measurements

Voltage is the difference in electromotive potential between two points. Simply stated, it is the force that generates current flow and to measure voltage, two points of connection are required. In AC circuits, this force, measured in volts, usually varies continuously and always reverses direction. In DC circuits, it is usually steady and never reverses direction. If the voltage changes in a repeating fashion, then it is called a periodic function. All AC power distribution is based on voltage changing at a periodic rate. There are several key voltage measurements:

- Instantaneous voltage
- Peak voltage
- RMS voltage
- Voltage crest factor
- Maximum voltage
- Minimum voltage
- Average voltage
- Present voltage

The instantaneous voltage is simply the voltage present between two points at an instant of time. When the voltage is graphed over time, the graph is called the voltage waveform. The peak voltage, V_{pk} , is the instantaneous voltage of the greatest magnitude (either positive or negative) over a period of time.

A measure that changes continuously is of limited use. A far more useful measurement is RMS voltage, wherein a single number is generated to describe a continuously varying voltage. The beauty of RMS voltage is that in power calculations, it makes a contribution to power roughly equivalent to a DC voltage of the same magnitude. RMS voltage is defined as the square root of the mean of the square of the instantaneous voltage over one

cycle of the fundamental frequency:
$$V_{rms} = \sqrt{\frac{\sum v^2}{N}}.$$

When measuring DC volts the RMS value is the same as the DC value.

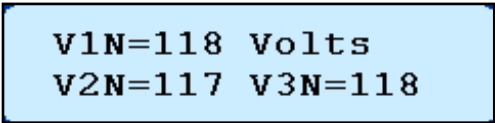
Voltage crest factor is the ratio of peak voltage of a cycle over the RMS voltage of the same cycle. $V_{cf} = V_{pk} / V_{rms}$. A perfect sine wave has a crest factor of 1.414 ($\sqrt{2}$).

Maximum, minimum, and average voltage in power measurements refers to the maximum, minimum, and average of RMS voltage measurements during a time of interest.

In the PS250, the present voltage is the RMS voltage calculated for the most recent second. Maximum, minimum, and average are based on these one second measurements.

Voltage Measurements in PowerSight

The present RMS voltage of each phase can be displayed simultaneously on PowerSight. Simply press the [Next] button repeatedly until the voltages are displayed. They will be updated once each second.



V1N=118 Volts
V2N=117 V3N=118

In phase-neutral operating mode, if a connection is not made to the V_N input, PowerSight will base its measurements on the neutral point between all the phases in doing its phase-neutral measurements. In the phase-phase measurement mode, V_{12} , V_{23} , and V_{31} are displayed instead.

Please note that when PowerSight is operating in 2 current mode, V_{31} is not calculated.

To set PowerSight for reading phase-neutral, phase-phase, or DC voltages, refer to the [Measurement Modes](#) chapter.

Voltage Measurements in PSM

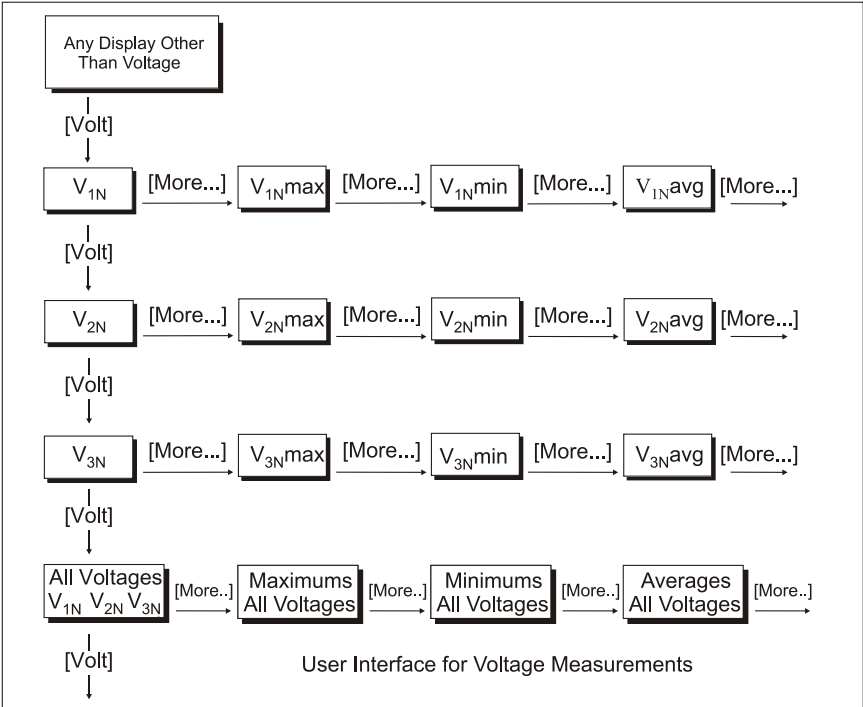
The consumption data log can record maximum, minimum, and average RMS voltage for each phase for each logging period.

The summary values at the top of the screen are the maximum, minimum, and average of all the values shown on the screen.

When viewing consumption waveforms, the average RMS of the cycles of the waveform is shown at the top, with the average crest factor listed below it. The instantaneous value of each point of the waveform can be determined using the vertical scale. If a harmonic analysis is displayed, the RMS voltage is also listed

If trending data is being recorded and PowerSight is operating in phase-neutral voltage measurement mode, the average V_{1N} , V_{2N} , and V_{3N} voltages for each second will be displayed and recorded each second. If in phase-phase voltage measurement mode, the average V_{12} , V_{23} , and V_{31} voltages for each second will be displayed and recorded each second.

The measurements of voltage presented on PowerSight can also be displayed in PSM by using the remote control feature.



In addition our Report Generator software will present maximum, minimum, and average voltage of each phase during any one or two intervals of time set by the user. If two time intervals are chosen, it will report the percent change and the actual change between the two intervals. For instance, if a comparison report is chosen and V₁₂ average is 480 V during the first interval and 478 V during the second interval, then the report would show:

	Before	After	Units	Change	% Change
Voltage, Phase 1, Avg.	480	478	volts	-2.0	-0.4%

The total harmonic distortion (THD) of voltages is displayed using the THD function, discussed later in this chapter.

Current Measurements

Current is the flow of charged particles, usually electrons, through a point. Current is measured in units of amps (which is short for amperes) and its symbol is commonly “I”. In AC circuits, current often varies continuously and always reverses direction. In DC circuits, it is usually steady and never reverses direction. If the current changes in a repeating fashion, then it is called a periodic function. There are several key current measurements:

- Instantaneous current
- Peak current
- RMS current
- Current crest factor
- Maximum current
- Minimum current
- Average current
- Present current

The instantaneous current is simply the current passing through a point at an instant of time. When the current is graphed over time, the graph is called the current waveform. The peak current, I_{pk} , is the highest instantaneous current over a period of time.

A measure that changes continuously is of limited use. A far more useful measurement is RMS current, wherein a single number is generated to describe a continuously varying current. The beauty of RMS current is that in power calculations, it makes a

contribution to power roughly equivalent to a DC current of the same magnitude. RMS current is defined as the square root of the mean of the square of the instantaneous current over one

cycle of the fundamental frequency:
$$I_{rms} = \sqrt{\frac{\sum i^2}{N}}$$

When measuring DC amps the RMS value is the same as the DC value.

Current crest factor is the ratio of peak current of a cycle over the RMS current of the same cycle. $I_{cf} = I_{pk} / I_{rms}$. A perfect sine wave has a crest factor of 1.414 ($\sqrt{2}$).

Maximum, minimum, and average current in power measurements refers to the maximum, minimum, and average of RMS current measurements during a time of interest.

In the PS2500, the present current is the RMS current calculated for the most recent second. Maximum, minimum, and average are based on these one second measurements.

Current Measurements in PowerSight

The present RMS current of each phase can be displayed simultaneously on

PowerSight. Simply press the [Next] button repeatedly until the

currents are displayed. They will be updated once each second.

I1=204	I3=246
I2=171	IN=0.00

Note that when PowerSight is operating in 2 current mode, I₂ is not measured or displayed.

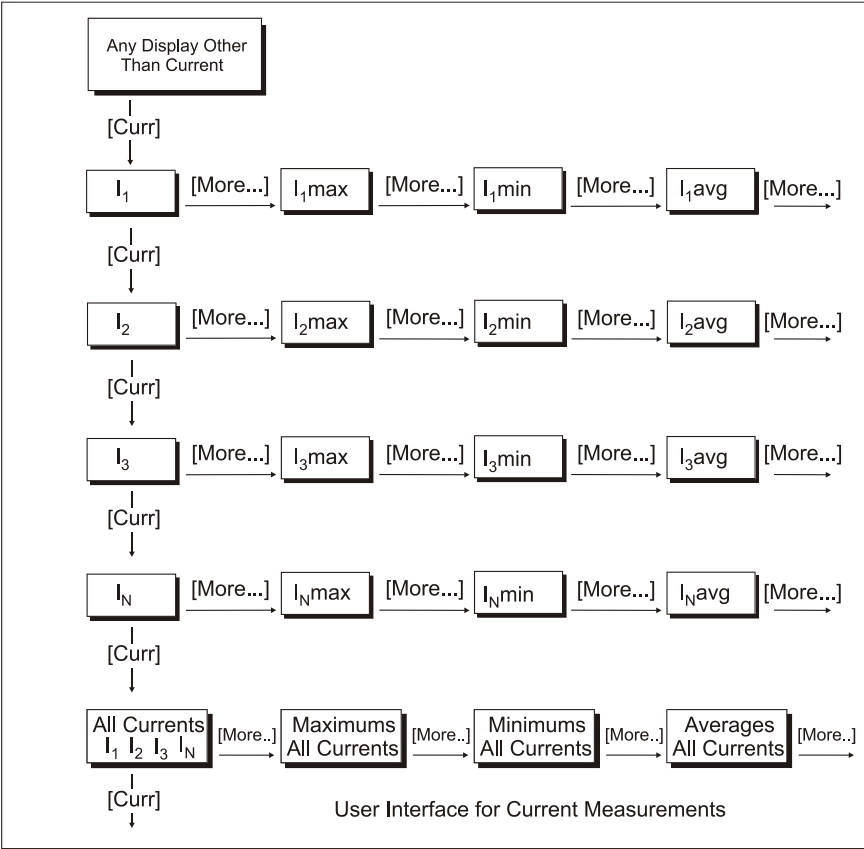
When measuring DC current, the RMS value is the same as the DC value. To set PowerSight for reading DC currents, refer to the section on [Setting Measurement Modes](#). Remember that you need to have a DC current probe in order to read DC current.

Current Measurements in PSM

The consumption data log can record maximum, minimum, and average RMS current for each phase for each logging period. The summary values at the top of the screen are the maximum, minimum, and average of all the values shown on the screen.

When viewing consumption waveforms, the average RMS of the cycles of the waveform is shown at the top, with the average crest factor listed below it. The instantaneous value of each point of the waveform can be determined using the vertical scale. If a harmonic analysis is displayed, the RMS current is also listed.

If trending data is being recorded and PowerSight is operating in phase-neutral voltage measurement mode, the average RMS



current of each phase and neutral for each second will be displayed and recorded each second. If in phase-phase voltage measurement mode, the average RMS current of each phase for each second will be displayed and recorded each second.

The measurements of current presented on PowerSight can also be displayed in PSM by using the remote control feature.

In addition, our Report Generator software will present maximum, minimum, and average current of each phase and neutral during any one or two intervals of time set by the user. If two time intervals are chosen, it will report the percent change and the actual change between the two intervals. For instance, if a comparison report is chosen and I₁ average is 48.0 A during the first interval and 47.8 A during the second interval, then the report would show:

	Before	After	Units	Change	% Change
Current, Phase 1, Avg.	48.0	47.8	amps	-0.2	-0.4%

The total harmonic distortion (THD) and K factor of currents is displayed using the THD function, discussed later in this chapter.

Imbalance Measurements

In a perfectly balanced three phase system, the voltages are of equal magnitude and the currents of the three phases are of equal magnitude. In most situations, however, the voltages and currents are not balanced. An imbalance can be a nuisance or can actually cause damage, depending on the driven load. Therefore it is important to measure voltage and current imbalance.

There are two methods of measuring imbalance. NEMA (National Electronic Manufacturers Association) uses an approach that measures the deviation of each measurement from the average. For instance, here is the formula for V₁₂ imbalance:

$$V_{12(imbalance)} = \frac{|V_{12} - V_{average}|}{V_{average}} = \frac{2V_{12} - V_{23} - V_{31}}{V_{12} + V_{23} + V_{31}}$$

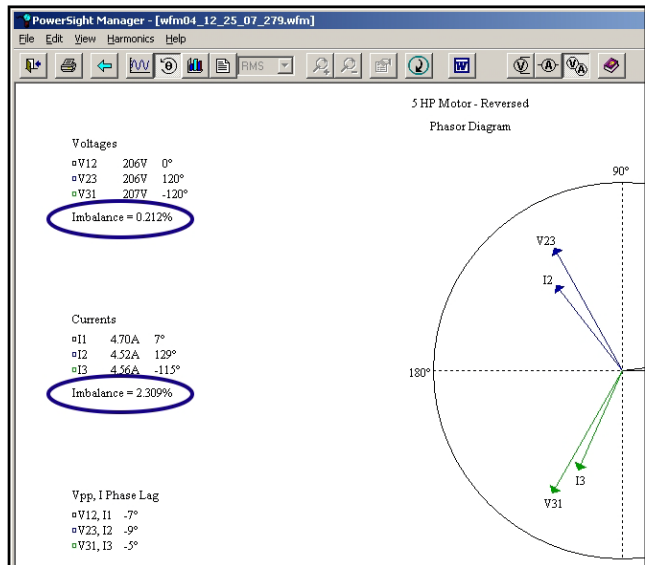
$$\text{where } V_{\text{average}} = \frac{V_{12} + V_{23} + V_{31}}{3}$$

Basically, this approach finds the average of the readings of the three phases and then finds how far away each of the phases is from this average. The phase with the largest deviation from the average is used for the final calculation, which is simply dividing this maximum deviation by the average to obtain a percentage deviation, always expressed as a positive percentage.

The European standard IEC61000-4-30 specifies a much more complex method. The results are generally quite close to the NEMA approach.

Imbalance Measurements in PSM

PSM performs imbalance calculations on both the voltage and current of a waveform set. To view the imbalance measurement, open a waveform set in PSM and then click on the phasor diagram icon. The imbalance measurements appear to the left of the phasor diagram.



Power Measurements

There are three basic interrelated measurements of power:

- True power
- Apparent power

- Reactive power

Apparent power is defined as the sum of the products of the RMS currents and their associated RMS voltages:

$$P_{app} = VA = (V_{1N_{rms}} \times I_{1_{rms}}) + (V_{2N} \times I_{2_{rms}}) + (V_{3N_{rms}} \times I_{3_{rms}}).$$

In other words, if you measure the RMS voltage (measured in volts) and the RMS current (measured in amps) and multiply them together, you get the apparent power (measured in VA).

True power is more complicated. It is defined as the average of the sum of the products of the instantaneous currents and their associated instantaneous voltages over one or more cycles:

$$P_{true} = Watts = \frac{\sum (v_{1N} \times i_1)}{N} + \frac{\sum (v_{2N} \times i_2)}{N} + \frac{\sum (v_{3N} \times i_3)}{N}.$$

True power equals apparent power when there is no phase lag in the load and no harmonics are present, otherwise it is less than the apparent power. This is why an ammeter cannot be used to accurately measure true power in most industrial circuits.

Reactive power is the square root of the difference between the squares of the apparent power and the true power:

$$P_{var} = VAR = \sqrt{(P_{app}^2 - P_{true}^2)}.$$

When the fundamental voltages and currents are in phase and no harmonic currents are present, reactive power is zero.

Peak demand of the demand period is an important measurement that is covered in the [Demand Period Measurements](#) section.

Power Measurements in PowerSight

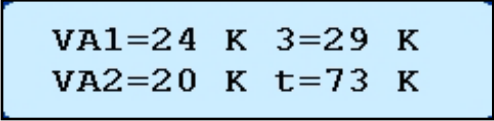
The present true power of each phase and the total true power of all the phases can be displayed simultaneously on PowerSight.

Simply press the [Next] button repeatedly until the true powers are displayed. They will be updated once

W1=12 K	W3=16 K
W2=11 K	Wt=38 K

each second.

The present apparent power of each phase and the total apparent power of all the phases can be displayed simultaneously on PowerSight. Simply press the [Next] button repeatedly until the true powers are displayed. They will be updated once each second.



VA1=24 K 3=29 K
VA2=20 K t=73 K

Power Measurements in PSM

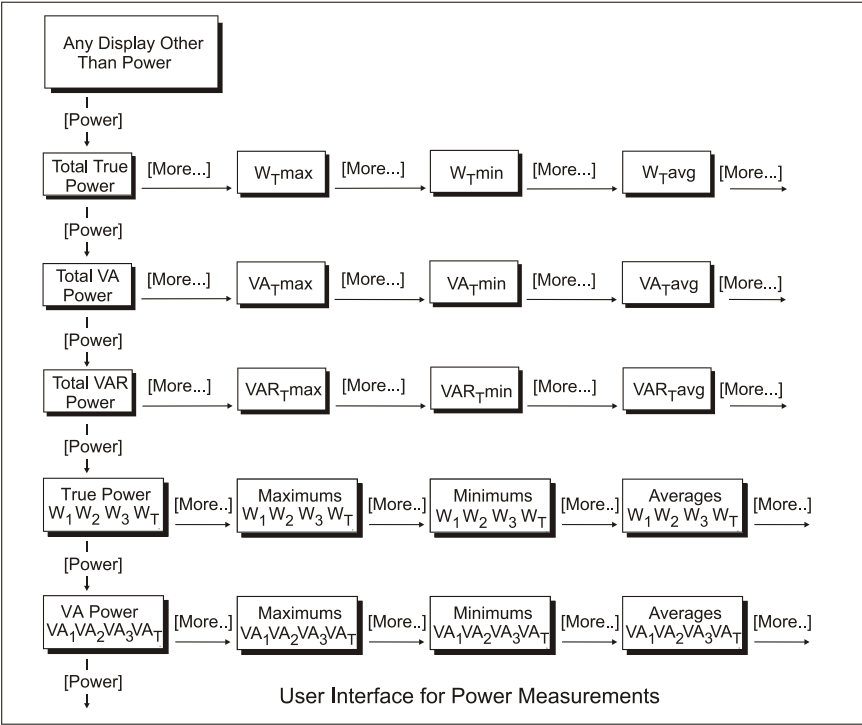
The consumption data log can record maximum, minimum, and average true power and apparent power for each phase for each logging period. In addition it can record the maximum, minimum, and average true or apparent total power. When graphed, the VAR can be displayed. The summary values at the top of the screen are the maximum, minimum, and average of all the values shown on the screen.

When viewing consumption waveforms, the average true power of the cycles of the waveforms are shown at the top right (if both voltage and current were recorded. If all phases are displayed, only the total true power is displayed at the top right. If a harmonic analysis of a phase is displayed, the true power of that phase is also displayed.

If trending data is being recorded and in phase-phase voltage measurement mode, the average true power and average apparent power of each phase will be displayed and recorded. If in phase-phase voltage measurement mode, the total true power and total apparent power will be displayed and recorded.

The measurements of power presented on PowerSight can also be displayed in PSM by using the remote control feature.

In addition our Report Generator software will present maximum, minimum, and average true power and apparent power of each phase and of all phases during any one or two intervals of time set by the user. If two time intervals are chosen, it will report the percent change and the actual change between the two intervals.



For instance, if a comparison report is chosen and W_{total} average is 480 W during the first interval and 478 W during the second interval, then the report would show:

	Before	After	Units	Change	% Change
Total True Power	480	478	watts	-2.0	-0.4%

Power Factor Measurements

“Power factor” is often misunderstood. The definition of power factor is the ratio of true power (in watts) to apparent power (in VA). But it is often used as an indication of how much current lags voltage in a circuit. When no harmonics are present, power factor does this well. When harmonics are present, there is no necessary relationship between power factor and current phase lag. To help differentiate what is meant by “power factor”, we talk of two different power factor measurement types:

- true power factor and

- displacement power factor.

PowerSight measures both of these.

True power factor, as its name implies, is the true measurement of power factor. It is the ratio of true power over apparent power :

$$TPF = \frac{P_{true}}{P_{app}} \text{ (or } TPF = \frac{W}{VA} \text{)}. \text{ When this ratio is less than 1.00,}$$

then reactive power is present. Reactive power may be the result of current lagging voltage due to the inductance of the circuit. It may also be the result of delayed harmonic currents that result form small driving harmonic voltages. A typical electronic load may have a power factor of 0.70 and yet the current may be perfectly in phase with the voltage. No amount of capacitance can raise this power factor (in fact it will lower it). However, when harmonics are not present, the true power factor turns out to be equal to the cosine of the angle of phase lag of the current. No amount of harmonic filtering will raise this power factor, because it has no relationship to harmonics. True power factor is 1.00 for a purely DC system.

Displacement power factor is actually not a power factor measurement. It is the cosine of the number of degrees that the current of the fundamental frequency lags the voltage of the fundamental frequency ($DPF = \cos(\theta)$), where θ is the phase lag of current. To do this measurement properly, PowerSight uses Fast Fourier Transform (FFT) analysis to separate the harmonic currents and voltages from the fundamental current and voltage and to do a precise measurement of the angle between those fundamentals. The resulting phase angle is then transformed using its inverse cosine to obtain the displacement power factor. This value is useful for deciding how much capacitance to add to a circuit to bring current into phase with voltage, thereby raising the displacement power factor. Displacement power factor is 1.00 for a purely resistive load or a DC system and drops down as the reactive power increases.

True power factor can be determined for each phase and for the total power. Terms for these measures are:

- TPF_1
- TPF_2
- TPF_3

- TPF_T .

The total power factor is not the total of these individual power factors, it is the ratio of the total true power over the total apparent power. Typically all four power factor measurements are similar in magnitude.

Displacement power factor can be determined for each phase. Terms for these measures are:

- DPF_1
- DPF_2
- DPF_3

There is no such thing as total displacement power factor. Typically the displacement power factors of each phase are similar in magnitude.

In addition, the following can be measured for each phase:

- Maximum true or displacement power factor
- Minimum true or displacement power factor
- Average true or displacement power factor
- Present true or displacement power factor

Maximum, minimum, average, and present total true power factor can also be measured.

Finally, a measurement related to DPF is displacement phase angle. The displacement phase angle is the number of degrees that the current at the fundamental frequency lags the voltage at the fundamental frequency. In the absence of harmonics, it is the inverse cosine of the true power factor. It is always the inverse cosine of the displacement power factor ($\theta = \cos^{-1}(DPF)$).

True Power Factor Measurements in PowerSight

The present true power factor of each phase and the total true power factor can be

displayed simultaneously on PowerSight. Simply press the [Next] button

repeatedly until the true power factors are displayed. They will be updated once each second.

PF1=1.00 3=1.00
PF2=1.00 t=0.13

Displacement P.F. and Phase Measurements in PowerSight

Displacement power factor readings and phase lag are not measured by the PS2500. There are other PowerSight models that do displacement power factor and phase lag angle measurements.

Power Factor and Phase Measurements in PSM

The consumption data log can record maximum, minimum, and average true power factor for each phase and for total power for each logging period. The summary values at the top of the screen are the maximum, minimum, and average of all the values shown on the screen.

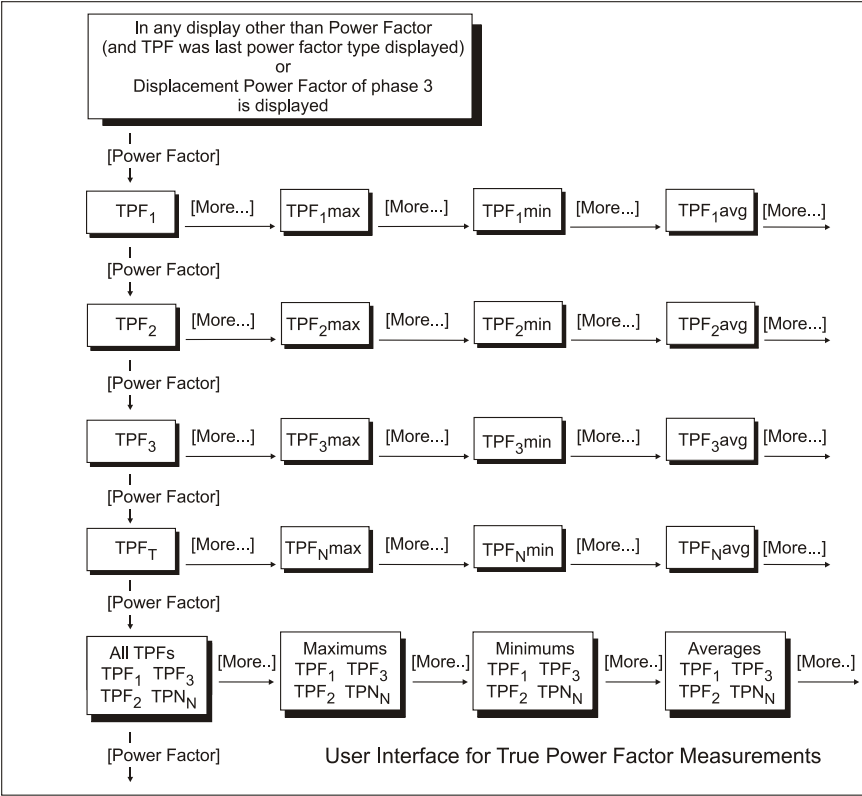
When viewing consumption waveforms, the average true power factor of the waveform is shown at the top right. If a harmonic analysis is displayed, the true power factor is also listed.

If trending data is being recorded and PowerSight is operating in phase-phase voltage measurement mode, the average total true power factor for each second will be displayed and recorded each second.

Phase lag angle is most easily determined by viewing a waveform and then clicking on the phasor diagram icon. The phase lags of each phase will be listed on the right as well as the phase angle between the phase 1 voltage and all other signals.

The measurements of true power factor can also be displayed in PSM by using the remote control feature.

In addition our Report Generator software will present maximum, minimum, and average true power factor of each phase and of the total power factor during any one or two intervals of time set by the user. If two time intervals are chosen, it will report the percent change and the actual change between the two intervals. For instance, if a comparison report is chosen and TPF₁ is 0.48 during the first interval and 0.48 during the second interval, then the report would show:



	Before	After	Units	Change	% Change
Power Factor, Phase 1, Avg.	0.48	0.48	volts	0.00	0.0%

Energy Measurements

The energy consumed is defined as the sum of the true power over time: $E = \int (P_{true} \times t)$. If measurements are taken every second in units of watts, then the KWH consumed during that second is $E = W_{sec} / 1000 / 3600$. The energy used over a longer time would be the sum of each of these energy measurements of each second.

Useful measurements and estimates of energy are:

- Real energy consumed
- Reactive energy consumed.
- Estimated energy consumed per hour
- Estimated energy consumed per month
- Estimated energy consumed per year

The real energy consumed is the amount of energy actually consumed during a period of time such as since monitoring started or during a specific week. For instance, if the sum of the KWH of each cycle totals to 5 KWH after 10 minutes of monitoring, then the energy consumed during the monitoring session is 5 KWH. The PS2500 calculates KWH once a second.

The reactive energy consumed is determined the same as KWH except VAR measurements are used, instead of watts.

The estimated energy consumed per hour is the total energy consumed, divided by the hours of monitoring. For instance, if 5 KWH is consumed over a 10 minute period, then the estimated

$$\text{energy consumed per hour is } KWH_{est./hr.} = 5 \times \frac{60}{10} = 30KWH .$$

The estimated energy consumed per year is the total energy consumed, divided by the fraction of a year that monitoring has proceeded. For instance, if 5 KWH is consumed over a 10 minute period, then the estimated energy consumed per year is

$$KWH_{est./yr.} = 5 \times \frac{60 \times 24 \times 365}{10} = 262,800KWH \text{ (262.8 megawatt-hours).}$$

The estimated energy consumed per month is the estimated energy consumed during a year, divided by 12. For instance, if 5 KWH is consumed over a 10 minute period, then the estimated energy consumed per month is

$$KWH_{est./mo.} = 5 \times \frac{60 \times 24 \times 365}{10 \times 12} = 21,900KWH \text{ (21.9 megawatt-hours).}$$

Energy Measurements in PowerSight

The PS2500 does not do energy measurement. There are other PowerSight models that do energy measurements.

Energy Measurements in PSM

PSM presents all commonly desired energy measurements. When displaying a data log containing power information, PSM will graph the energy consumed over any interval. The user can choose to graph real energy use (KWH) or reactive energy use (KVARH).

Normally, a graph of energy usage will be a line that climbs up as it moves to the right. This is because, as more and more power is used, the cumulative energy used increases.

In addition our Report Generator software will calculate actual energy used and the estimated energy used pr month during any one or two intervals of time set by the user. If two time intervals are chosen, it will report the percent change and the actual change in energy use between the two intervals. For instance, if a comparison report is chosen and 5 KWH is consumed during the first interval of 10 minutes and 8 KWH is consumed during the second interval of 20 minutes, then the report would show:

	Before	After	Units	Change	% Change
Energy, Total Elapsed	5	8	KWH	3	60.0%
Energy, Estimated per month	21,900	17,520	KWH	-4380	-20.0%

In this example, even though the actual energy increased significantly, the actual rate of energy use declined significantly because of the difference in time intervals between the before and after tests.

Cost Measurements

The cost of energy consumed is defined as the product of the energy consumed times the user-defined rate: $\$ = KWH \times rate$. PowerSight presently uses a simple single rate price system.

Useful measurements and estimates of cost are:

- Cost of energy consumed (elapsed cost)
- Estimated cost per hour
- Estimated cost per month
- Estimated cost per year

The cost of energy consumed is the actual cost of energy consumed during a period of time such as since monitoring started or during a specific week. For instance, if 5 KWH was consumed after 10 minutes of monitoring and the rate is \$0.10/KWH, then the cost during the monitoring session is \$0.50.

The estimated cost per hour is the elapsed cost, divided by the hours of monitoring. For instance, if the cost is \$0.50 for a 10-minute period, then the estimated cost per hour is

$$\$_{est./hr.} = 0.50 \times \frac{60}{10} = \$3.00 .$$

The estimated cost per year is the elapsed cost, divided by the fraction of a year that monitoring has proceeded. For instance, if the cost is \$0.50 for a 10-minute period, then the estimated cost

$$\text{per year is } \$_{est./yr.} = 0.50 \times \frac{60 \times 24 \times 365}{10} = \$26,280 .$$

The estimated cost per month is the estimated cost for a year, divided by 12. For instance, if the cost is \$0.50 for a 10-minute period, then the estimated cost per year is

$$\$_{est./mo.} = 0.50 \times \frac{60 \times 24 \times 365}{10 \times 12} = \$2,190 .$$

Cost Measurements in PowerSight

The PS2500 does not do cost measurements. There are other PowerSight models that do cost measurements.

Cost Measurements in PSM

Our Report Generator software will calculate the elapsed cost and estimated cost per month of energy consumed during any one or two intervals of time set by the user. If two time intervals are chosen, it will report the percent change and the actual change in cost between the two intervals. For instance, if a comparison report is chosen and \$0.50 of energy is consumed during the first interval of 10 minutes and \$0.80 of energy is consumed during the second interval of 20 minutes, then the report would show:

	Before	After	Units	Change	% Change
Cost	\$0.50	\$0.80		\$0.30	60.0%
Cost, Estimated per month	\$2,190	\$1,752		- \$438.00	-20.0%

In this example, even though the elapsed cost increased significantly, the actual rate of cost declined significantly because of the difference in time intervals between the before and after tests.

You may view or change the rate used by Report Generator to calculate cost. It is one of the fields you can change when you set up a report.

Demand Period Measurements

Utilities typically evaluate energy usage over fixed increments of time, such as 15-minute intervals. These time intervals are called “demand periods.” The average power consumed during each demand period is called the “demand” of that period. Typically, the utility will look for the demand period with the greatest demand over a period of time, such as a month, and call this the “peak demand period”. The demand of that period is the “peak demand”. The utility may then present a surcharge on the user’s bill based on the peak demand. For this reason, power users have an incentive to determine

- Peak demand
- Peak demand period.

Demand Period Measurements in PowerSight

The PS2500 does not do demand period measurements. There are other PowerSight models that do demand period measurements.

Demand Period Measurements in PSM

There are two methods for obtaining Demand period measurements in PSM. The first is to monitor using 15 minute logging intervals and making sure that total power is being logged in the consumption log. When logging is completed, graph the consumption log and choose to present total power. Observe at what point the average total power is at its peak. This point is the peak demand period. Put your cursor over it and observe the timestamp of the beginning of the peak demand period at the upper right of the graph. To find the peak demand, observe the average total power in watts at the point of the peak demand period.

The more direct method of determining the peak demand and the peak demand period is to run the Report Generator program (see Generating a Report) and select "Peak Demand" in the list of variables to report on. The report will list the peak demand period, the peak average demand in Watts, the peak VA demand period, and the peak average VA.

Frequency Measurements

Any periodic waveform has a basic rate at which it repeats itself. This is the fundamental frequency of the waveform, expressed in units of Hertz or cycles/second. The fundamental repeating waveform is called a cycle and is usually expressed in degrees (360 degrees to complete one cycle). Some frequency measurements of interest are:

- Present frequency
- Maximum frequency
- Minimum frequency
- Average frequency

The present frequency is the average frequency of all of the cycles of the most recent second. The maximum frequency is the

frequency of the shortest cycle (fastest repeat time) during the time of interest. The minimum frequency is the frequency of the longest cycle (slowest repeat time) during the time of interest. The average frequency is the average frequency of all the cycles during the time of interest.

When operating in the variable frequency modes, the PS2500 determines the fundamental frequency once each second. The bands of frequencies that it can measure are from 45 to 66 Hz and from 360 to 440 Hz. Harmonics of these fundamental frequencies are measured to 3,300 Hz.

Frequency Measurements in PowerSight

The PS2500 does not display its frequency measurements. There are other PowerSight models that display frequency measurements.

Frequency Measurements in PSM

The consumption data log can record maximum, minimum, and average frequency. PowerSight determines which input channel is the source of this measured fundamental frequency. When graphed, the summary values at the top of the screen are the maximum, minimum, and average of all the values shown on the screen.

When viewing consumption waveforms, if a harmonic analysis is presented, the fundamental frequency is presented.

Real-time measurements of frequency can also be displayed in PSM by using the remote control feature.

In addition, our Report Generator software will present maximum, minimum, and average frequency during any one or two intervals of time set by the user. If two time intervals are chosen, it will report the percent change and the actual change between the two intervals. For instance, if a comparison report is chosen and the average frequency is 48.0 Hz during the first interval and 47.8 Hz during the second interval, then the report would show:

	Before	After	Units	Change	% Change
Frequency, Avg.	48.0	47.8	Hz	-0.2	-0.4%

Logging Summary on PowerSight

A logging summary can be displayed on the PS2500 by repeatedly pressing the [Next] button until the summary is displayed. The summary is actually a collection of three separate displays that appear in succession over and over. They tell the elapsed time since logging started, the time remaining before the log fills up, and a combination of the number of records stored and the total record capacity of the meter. Each of the 3 displays appears for 2 seconds before being succeeded by the next display in order. The time remaining and number of record capacity are controlled by your selection of variables to be logged.

Elapsed Time
0:00:36

The default is 6.6 days and 4050 records when logging is started. The number of records stored is controlled by your setting of the logging period. The default is one record recorded each 3 minutes.

Time To Fill Log
0:46:27

Records Stored
275 of 1044

This summary of displays is very helpful during logging to verify that logging was setup and is proceeding as planned. It also provides valuable awareness of when the log is going to be filled.

The elapsed time of monitoring is how long the unit has been monitoring. Generally, this is how much time is recorded in the log. If the log fills up and logging continues, writing over the oldest data, the elapsed time keeps increasing even though the logged time quits increasing. This means that the maximums, minimums, and averages displayed on PowerSight may be different from those in the log, since the monitoring session is for a longer period of time than the logging session.

The time remaining to fill the consumption log is how much longer the logging session can continue before the log is filled and logging either stops or begins writing over the oldest data. The time capacity of the log is how much time it will take to fill the consumption log. This is under your control by changing the variables selected to be recorded using the Data Setup feature of PSM (see the [Setting Measurement Types](#) section).

The record capacity of the log is how many records can be recorded before the log fills. The default number for consumption logging is 4569 records. This number can be changed by changing the variables selected to be recorded in the log using the Data Setup feature of PSM (see the [Setting Measurement Types](#) section) or by allocating more or less memory to consumption logging.

The number of records used in the log is a display of how many records have been saved since logging began. When displayed, it will always be accompanied by the record capacity of the log.

Time Summary on PowerSight

This summary is actually a collection of three separate displays that appear in succession over and over. They tell the present time, the time or mode that will initiate logging and the time or mode that will end logging. Each of the 3 displays appears for 2 seconds before being succeeded by the next display in order. The present time is set by you, using the “Setup Unit” option of the main menu of

the PSM software. The time or mode for starting or stopping logging is set by you, using the “Data Setup” option of the main menu of the PSM software. Logging can be set to start at a specific time and date or when the unit is turned on while power is present or manually via PSM or via the [Next] button. Logging can

Present Time
1/01 22:59:35

Log Start Time:
Manual Start

Log Stop Time:
Manual Stop

be stopped at a specific time and date or when the log is filled or manually.

The present time and date is the time and date of the clock inside PowerSight used for creating timestamps for the records of the log and for dating waveform sets that are saved. It can be changed as one of the administrative functions (see the [Administrative Functions](#) section).

The programmed start time of monitoring (if displayed) is the time and date that is programmed in the Data Setup feature of the PSM software (see the [Starting Data Logging](#) section). When the clock inside PowerSight reaches that time and date, monitoring begins and the old log is erased.

The programmed stop time of monitoring (if displayed) is the time and date that is programmed by the Data Setup feature of the PSM software (see the [Stopping Data Logging](#) section). When the clock inside PowerSight reaches that time and date, monitoring is stopped.

Time and Capacity Measurements in PowerSight

The Data Setup window allows you to review and change many of the time and capacity measurements. The time capacity of the consumption log, the record capacity of all the logs and the programmed start and stop time of monitoring (if one exists) can be reviewed and changed.

The number of records used in any of the log types can be determined by attempting to receive the log data from an attached PowerSight.

Time and Capacity Measurements in PSM

The Data Setup window allows you to review and change many of the time and capacity measurements. The time capacity of the consumption log, the record capacity of all the logs and the

programmed start and stop time of monitoring (if one exists) can be reviewed and changed.

The measurements of time and capacity presented on the PS2500 can also be displayed in PSM by using the remote control feature.

Harmonic Measurements

French mathematician Jean Baptiste Fourier determined 150 years ago that any periodic waveform can be mathematically defined to be the sum of a fundamental frequency equal to the periodic rate and additional frequencies that are multiples of the fundamental frequency. Thus any repeating waveform that does not appear to be a pure sine wave can be replicated by adding a collection of sine waves of varying frequencies, phases, and peak amplitudes. Since the frequencies are exact multiples (harmonics) of the fundamental, the waveform could be considered to be distorted from a pure sine wave by the addition of harmonic frequencies. The total harmonic distortion provides an accurate measure of how distorted from a pure sine wave, a waveform is.

There are several related measures of interest:

- Fundamental frequency
- Harmonic frequency
- Harmonic number
- Harmonic amplitude
- Harmonic phase angle
- THD (total harmonic distortion)
- K factor.

The fundamental frequency is the first harmonic. It is discussed in the [Frequency Measurements](#) section. The harmonic frequencies are the frequencies that are multiples of the fundamental frequency. For instance the 7th harmonic of 60 Hz is $7 \times 60 = 420\text{Hz}$. In this case, “7” is the harmonic number of 420 Hz in a 60 Hz system.

The RMS value of a harmonic frequency is its harmonic amplitude. They can be expressed as relative to the amplitude of the fundamental frequency or as an actual RMS amp value. For

instance if the fundamental frequency has a current of 120 amps and the 5th harmonic has an amplitude of 30 amps, then the 5th harmonic has a magnitude of 30 amps or a relative magnitude of 50%.

The harmonic phase angle is the number of degrees that it leads the fundamental frequency. Comparing the difference in the phase angle between voltage and current of a given harmonic allows you to determine the “direction” of the harmonic.

There are two basic types of THD calculations used in power. Normally, THD normally refers to finding the THD of the harmonics relative to the fundamental frequency (THD-F). THD-F is defined as the square root of the sum of the squares of the magnitude of each harmonic of the fundamental frequency divided by the square of the magnitude of the fundamental frequency:

$$THD = \sqrt{\frac{(h_2^2 + h_3^2 + \dots + h_{50}^2)}{h_1^2}}$$

For instance, if you are monitoring a 60 Hz current that has high distortion, H1 (the magnitude of the 60 Hz fundamental) might be 120 amps, H3 (the magnitude of the third harmonic, 180 Hz) might be 60 amps, H5 might be 30 amps, H7 might be 15 amps, and all the other harmonics might have magnitudes of 0.

In this case, the magnitude of the THD-F would be

$$THD = \sqrt{\frac{60^2 + 30^2 + 15^2}{120^2}} = 57\% .$$

K factor is a derivative of calculating THD where the frequency is given extra weight. Each harmonic current amplitude is divided by the total RMS current, multiplied by the harmonic number, then squared, and then summed over the first 50 harmonics.

$$K_factor = \sum_{h=1}^{50} \left(\frac{I_h \times h}{I_{rms}} \right)^2$$

This is a valuable measurement to observe when the heating effect of harmonics is a concern. Using the numbers from the

example above for calculating THD, the total current of the waveform is:

$$I_{rms} = \sqrt{120^2 + 60^2 + 30^2 + 15^2} = 138.3A.$$

$$K_{factor} = \left(\frac{120 \times 1}{138.3}\right)^2 + \left(\frac{60 \times 3}{138.3}\right)^2 + \left(\frac{30 \times 5}{138.3}\right)^2 + \left(\frac{15 \times 7}{138.3}\right)^2$$
$$= 0.75 + 1.69 + 1.18 + 0.58 = 4.20$$

Harmonic Measurements in PowerSight

The PS2500 performs harmonic measurements if the Harmonic Analysis option (HAO) has been installed. When the HAO is installed, THDs can be included in the data log, but THD results are not displayed on the meter. There are other PowerSight models that display THD measurements on their displays.

Harmonic Measurements in PSM

The consumption data log can record the average THD-F of each phase of voltage and each phase of current for each logging period. The summary values at the top of the screen are the average of all the values shown on the screen.

When viewing a consumption waveform, transforming it into a harmonic graph presents a bar chart showing the relative magnitude of each of the first 50 harmonics. The THD-F is listed at the lower right. Transforming a consumption waveform into harmonic data presents a chart of the magnitudes and phase angles of each harmonic. The THD-F and K factor are also listed.

The measurements of voltage presented on the PS2500 can also be displayed in PSM by using the remote control feature.

In addition our Report Generator software will present average THD-F for voltage and current of each phase during any one or two intervals of time set by the user. If the use of two time intervals is chosen, it will report the percent change and the actual change between the two intervals. For instance, if a comparison

report is chosen and THD-F of V_{1N} is 4.8% during the first interval and 4.7% during the second interval, then the report would show:

	Before	After	Units	Change	% Change
THD, Voltage, Phase 1	4.8	4.7	%	-0.01	-2.1%

Measurement Modes

Introducing Measurement Modes

PowerSight performs so many measurements that it is quite a challenge to keep the instrument easy to use. Often, you make measurements on one general type of system. There is no need to complicate your task by PowerSight asking you to make the same choices over and over. Many of the basic choices define how you wish PowerSight to interpret its inputs and how you want it to calculate and record its results. To accomplish these ends, several measurement modes can be selected by the user. The general categories are:

- Voltage measurement modes
- Frequency measurement modes
- Power measurement modes
- Defining inputs

All measurement modes will be explained in the next few sections.

The [Measure Mode] key allows you to make these basic choices only when needed. As new measurement capabilities are added to PowerSight, the [Measure Mode] key will keep the product easy to use.

Phase-Neutral vs Phase-Phase vs 2 Current Mode

There are three voltage measurement modes:

- Phase-Phase
- Phase-Neutral
- 2 Current Mode.

When measuring voltages, you either need them recorded in phase-neutral format or in phase-phase format. A phase-neutral voltage reading is the difference in potential between one of the phase inputs (V_1 , V_2 , and V_3) and the neutral input (V_N). They are presented as V_{1N} , V_{2N} , and V_{3N} . A phase-phase voltage reading is the difference in potential between two phase inputs. They are presented as V_{12} , V_{23} , and V_{31} .

Wye systems are usually measured using phase-neutral voltages. Delta systems are usually measured using phase-phase voltages. On occasion, you may wish to measure phase-phase voltages in a wye system if the equipment that you are monitoring bridges two hot voltages (like a single- phase air conditioner running at 240 V).

In a perfectly balanced three-phase system, the phase-neutral voltage is equal to the phase-phase voltage divided by the square root of 3 ($V_{pn}=V_{pp}/1.732$). In practice, systems are usually not balanced, but this gives an idea of what voltage to expect as you change the voltage mode from phase-phase to phase-neutral.

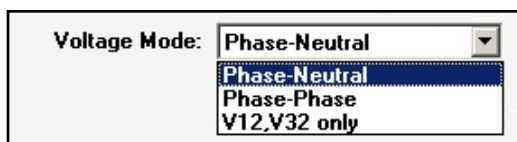
There is a third voltage measurement mode that may be active in your unit. It is the 2 current mode (or the V_{12}, V_{32} only mode). In this mode, only two phase-phase voltages are used and displayed. The 2 current mode actually involves a different method of measuring power and therefore is actually a different power measurement mode, but since it is independent of the other power measurement modes and yet is an alternative to the other two voltage measurement modes, it is treated as a voltage measurement mode. When in this mode, only V_{12} and V_{32} (not V_{23} or V_{31}) are measured and displayed.

It is important to note a limitation of operating in phase-phase mode. The power factor and power reading for each phase are not necessarily accurate. This is not due to any accuracy problem with PowerSight. Instead, it is the result of each phase's current being the result of two different phase-phase voltages, whereas a phase's power and power factor calculations rely on only one of the phase-phase voltages. Therefore, although the power factor and power readings have diagnostic value, they are not true representations of the actual power factor or power being used for a given phase. Nevertheless, the measurements that count most, the total power factor and total power, are correct in phase-phase mode. This result may seem surprising, given that the individual phase measurements are not exact, but the mathematics of combining three equations with three unknowns results in correct total power factor and total true power measurements.

Changing the Voltage Measurement Mode in PSM

To determine the voltage measurement mode using PSM, connect PowerSight to PSM and then either go to the Setup Data menu and read what appears in the Voltage Mode box or operate in Remote Control mode and press the key combinations described above.

To change the voltage measurement mode using PSM, either go to the Data Setup menu, click on the Voltage



Mode drop-down box, select the mode that you wish to operate in, and then send the new setup to the connected PowerSight meter or operate in Remote Control mode and press the key combinations described above.

50/60/400Hz vs DC vs Variable Frequency

There are 5 frequency measurement modes in the PS2500:

- Fixed 50 Hz and DC
- Fixed 60 Hz and DC
- Fixed 400 Hz and DC
- Variable Frequency from 22 – 200 Hz
- Variable Frequency from 360 – 440 Hz

These modes allow making measurements on virtually any power system in the world. When making measurements on a power source whose frequency is stable (as are most power grids in industrial countries), it is recommended that you operate in either Fixed 50 Hz or Fixed 60 Hz mode, depending on the frequency present. If you are making measurements on a military or avionics system whose 400 Hz is stable, it is recommended that you operate in Fixed 400 Hz mode. If you are making measurements on a DC system, then you may choose either Fixed 50, Fixed 60, or Fixed 400 Hz mode. When making measurements on a system whose frequency may vary (such as a generator or variable frequency drive), operate in either 22 – 200 Hz Variable Frequency or 360 – 440 Hz Variable Frequency mode.

When operating in variable frequency measurement mode, PowerSight determines the fundamental frequency of the voltage or current that is attached to it every second. The fundamental frequency is recorded and is used to determine the true RMS values of all voltages and currents. This mode of measurement is only recommended if performing:

- measurements on a system powered by or backed-up by a generator or other system whose frequency may vary from standard
- measurements of the output of a variable frequency drive
- measurements of a system powered by a utility that does not provide power at a stable standard frequency

The variable frequency measurement mode provides accurate true RMS readings of voltage, current, and power for input frequencies varying from 22 to 200 Hz or from 360 to 440 Hz. If even one voltage or current input is in this frequency range, PowerSight can also measure the true RMS of DC and rectified signals that are also connected while in this measurement mode.

It is generally recommended that you operate in one of the fixed frequency modes whenever you can. One reason is that there is the potential of slight errors in measuring the frequency of certain waveforms. A slight error in frequency will add a slight error in the measurement of all other variables. Another reason is, if you are measuring small voltages or currents, they may not be large enough for an accurate frequency measurement even though they might be large enough for an accurate RMS measurement. Although these situations are unusual, they can happen. For that reason, we recommend one of the fixed frequency modes, when practical.

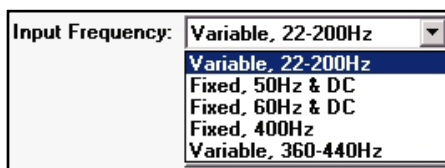
The fixed frequency measurement mode is necessary when measuring DC voltage or DC power. In a DC system, the frequency is 0 Hz, which is clearly outside of the variable frequency measurement range. By setting PowerSight in one of the fixed frequency measurement modes, PowerSight no longer measures the input frequency each second, it simply assumes the frequency. This assumption of the time required to measure the inputs allows for accurate readings in DC systems and systems in which only higher harmonics are present (as with rectified

signals). It also allows accurate readings of AC and mixed AC/DC signals (such as AC ripple on a DC voltage).

Changing the Frequency Measurement Mode in PSM

To determine the frequency measurement mode using PSM, connect PowerSight to PSM and then either go to the Setup Data menu and read what appears in the Input Frequency box or operate in Remote Control mode and press the key combinations described above.

To change the frequency measurement mode using PSM, either go to the Data Setup menu, click on the Input Frequency drop-down box, select the mode that you wish



to operate in, and then send the new setup to the connected PowerSight meter or operate in Remote Control mode and press the key combinations described above.

Always Positive Power versus Negative Power Allowed

There are 3 power measurement modes in PowerSight:

- Always positive power
- Negative power allowed
- 2 current probe approach.

Most users perform measurements on equipment that is either always consuming power or always generating power. However, there are cases in which you may wish to measure power use on equipment that is alternatively consuming and generating power (like an oil well pump jack). Always Positive Power measurement mode and Negative Power Allowed measurement modes are provided to allow ease and accuracy of measurement in both types of situations.

When PowerSight is shipped from the factory, it is set for Always Positive Power measurement mode. In a typical setup, if you connect a current probe backwards, the power for that phase will appear to be negative. In Always Positive Power measurement

mode, PowerSight senses this and automatically turns the current probe backwards in software so that all phases measure positive power. This automatic correction is provided to assist our customers, allowing them to concentrate on readings rather than connections under most circumstances. Accuracy may be slightly better when the probe is oriented correctly, but for most measurements this added accuracy is of no significance with PowerSight. If current and power readings of the highest accuracy are necessary, use the Checkout Connections feature that is discussed earlier in this manual or view the waveforms in order to ensure that current probes are connected correctly.

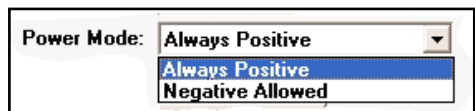
If you need to monitor equipment that alternately consumes and generates power, you need to select the Negative Power Allowed measurement mode. In this mode, positive and negative power readings for each phase are accepted and are combined to find the net power usage. Depending on the result, positive or negative power, energy, and cost results may be displayed. When negative power measurements are allowed, it is necessary to have all current probes connected properly. Use the Checkout Connections feature or view all the waveforms before taking measurements. Failure to do so will typically result in power readings 1/3 of the correct value.

The 2 Current Probe mode (also known as 2 wattmeter mode) is a method of calculating total power using only 2 current probes and 2 phase-to-phase voltages. This power measurement mode is discussed in the [Voltage Measurement Mode](#) section since it has direct effects on the measurement and display of voltages.

Changing the Power Measurement Mode in PSM

To determine the power measurement mode using PSM, connect PowerSight to PSM and then either go to the Setup Data menu and read what appears in the Power Mode box or operate in Remote Control mode and press the key combinations described above.

To change the power measurement mode using in PSM, either go to the Data



Setup menu, click on the Power Mode drop-down box, select the mode that you wish to operate in, and then send the new setup to the connected PowerSight meter or operate in Remote Control mode and press the key combinations described above.

Defining Inputs

All current probes used by PowerSight are self-identifying so they are automatically calibrated to the unit when they are plugged in. This is a convenience, a time saver, and a protection against making errors in measurements. There are occasions where the input does not represent what it actually is. In these cases, the user needs to define the inputs for PowerSight or for PSM.

The chief need for defining inputs is to enter in input ratios for voltage or current. There are several occasions when this is necessary. The most common occurs when monitoring a large main circuit to a facility. The current may be too large to measure with the current probes you own, or you may not be able to physically clamp around the cables or bus bar, or the voltage of the bar may exceed the insulation rating of the current probe. In these instances a permanently installed CT and/or PT may be wired-in for a metering system. By clamping onto the secondary of such a CT (typically with an HA5 probe) or attaching directly to the PT with voltage probes, you obtain readings proportional to the primary side of the CT or PT. Entering the ratios of the CT and/or the PT into PowerSight allows all recorded values to be scaled appropriately. PowerSight then records primary values, although it is connected to the secondary.

There are other instances where input ratios are valuable. If a large current is carried by 2 or more parallel conductors, you can clamp onto 1 conductor, enter in the ratio (for instance 4 total conductors to 1 measured conductor) and thereby record the total power without clamping around all the conductors. However, before you use this approach, verify that each conductor is carrying the same amount of current. It's not uncommon for parallel conductors to carry different loads when high currents are involved. If the loads are different in each conductor, you may enter the appropriate input ratio. For instance, if the measured total of 4 cables is 2005 amps and the one cable you will monitor

carries 492 of the amps, you can enter the ratio 2005 : 492 and all readings will be correct.

There are cases where you may wish to measure very small currents with a large probe. In order to improve the accuracy of the readings, you may wish to clamp onto several turns of the wire. This essentially amplifies the signal (and boosts the signal to noise ratio). For instance, if you were reading 1 amp with an HA1000 probe, you might clamp onto 10 turns of the wire to boost the signal to 10 amps. If you then entered a ratio of 1 : 10, the readings will be scaled correctly and be more accurate.

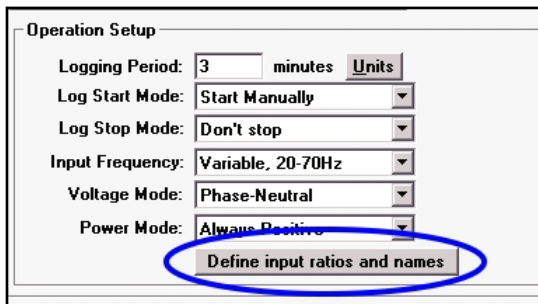
Finally, in measuring high voltages, if you use a high voltage probe, enter the ratio of the probe (for instance, 100 : 1) and record the actual voltage being measured.

Using these techniques, you can measure anything with PowerSight. The measurement range extends from 1 milliamp to more than 4 million amps, 1 volt to more than 4,000 kilovolts, 1 watt to more than 40 megawatts!

Note: When PowerSight is turned off, its input ratio settings are not returned to 1:1. You must take care that they are what you wish.

Changing Input Ratios in PSM

To determine or change the input ratios using PSM, go to the Data Setup menu and click on "Define input ratios and names". This leads to the presentation of the Input Configuration summary display. For each input to PowerSight, there is a line listing the name of the signal, the input ratio of the signal, and a brief description of the signal. If you wish to change any of these parameters, double-click on the line you wish to change and make the change. Be

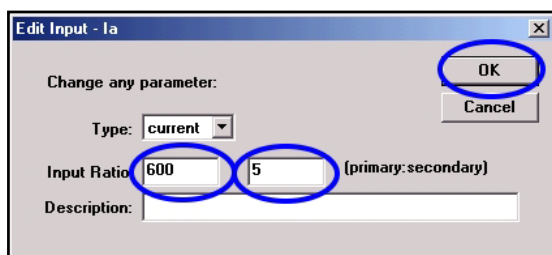
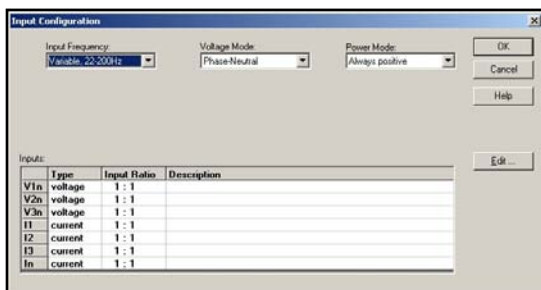


sure to click “OK” when you are done and save the data setup to a file and/or to PowerSight.

As an example, suppose you wish to record the primary of a permanently installed CT while clamped onto the secondary with your I₁ current probe.

Get to the Input

Configuration screen and double click on the “I₁” row. If the ratio of the CT is 600 : 5, simply enter “600” in the first column and “5” in the second column of “Input Ratio”. If the ratio also applies to other inputs, enter them at this time, too. Click on “OK” when done.



Note: Once it is entered, an input ratio is kept for the specified inputs until you change the ratio again. The default ratios for PowerSight are set to 1 : 1.

Voltage & Current Waveforms

Introduction

Waveforms are very different from logs and other graphs. A waveform is the most basic direct measurement. It displays the instantaneous levels of voltage and current as they continually vary, as you see on an oscilloscope. All other measurements are derived from them. Even the RMS measurements of voltage and current are derived from these basic samples. Logs, on the other hand plot measurements that are derived from the basic sampling. They generally have no relation to what is occurring at a specific instant of time. So although both waveforms and logs are presented graphically, they are not the same and are not treated the same in analysis. If you could zoom into a data log of Vrms, you might be able to zoom in further and further until you arrive at the measurement of Vrms representing 1/2 cycle of voltage. However, you would not eventually see a waveform of voltage.

Saving Consumption Waveforms

PowerSight allows you to store sets of waveforms whenever you wish to. These waveforms may be uploaded and displayed on your PC at any time.

Whenever a set of consumption waveforms is manually recorded by PowerSight, all 3 voltages and all four 4 currents are recorded for 50 milliseconds. This time-coincident snapshot of 7 waveforms is called a "waveform set". Please Note: When operating in one of the 400 Hz operating modes the waveforms are recorded for 7 msec to give sufficient resolution to these much faster frequencies.

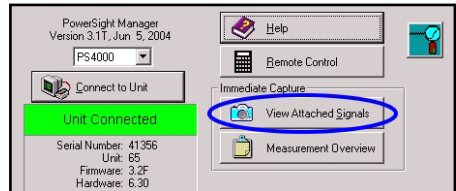
You can capture a waveform set at anytime by using PSM if PowerSight is connected. The waveform data storage space within PowerSight is separate from the space reserved for other types of data. Therefore it does not limit the size of your logs or write over any other type of data. Whenever you store a waveform set in PowerSight it writes over the oldest waveform set that is stored in the meter.

One of the wavesets, waveset1, is a special waveset. It is automatically captured by PowerSight when you initiate monitoring. The benefit of doing this is you can always retrieve a look at what the waveforms were like when monitoring began.

To use PSM to capture a waveform set and have it stored in the connected PowerSight meter, click on “Remote Control” at the main menu and then click on the “Wave” key of the representation of the PowerSight keyboard on the screen.



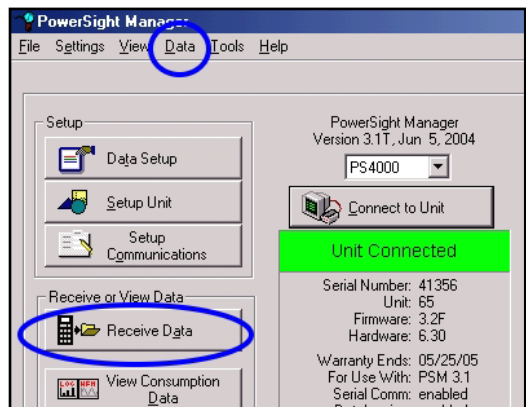
When PSM is connected to PowerSight, you can also capture a waveform set at any given moment by clicking on the “View Attached Signals” button on the Main Menu.



A waveset captured this way is immediately stored in the PC and shown on the screen. It does not affect waveform sets stored on the PowerSight meter that is attached. It is a convenient way of viewing the signals that are attached, repeatedly.

Receiving Stored Consumption Waveforms

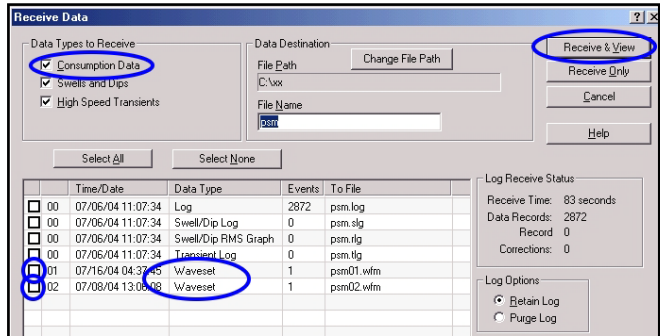
Waveform sets that are stored inside of a connected PowerSight can be received by PSM in either of two ways. At the Main Menu, you can either click on the “Receive Data” button or on the “Data” dropdown button and then “Receive Data”. In either case, the Receive



Data menu will open and all the different types of data files in the connected PowerSight will be displayed.

Make sure that there is a check in the box before the line

“Consumption Data” in the Data Types to Receive section. Then

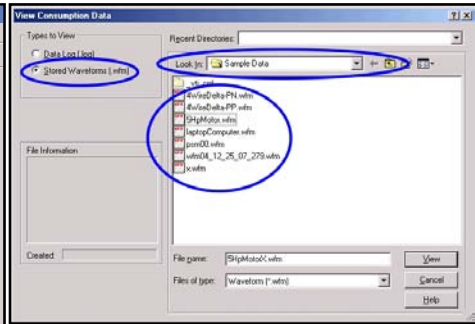
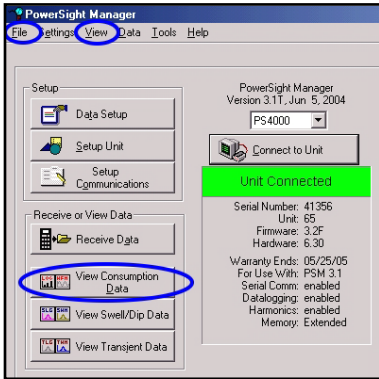


look for the “Waveset” Data Type lines. These files are the stored waveform sets stored in the PowerSight. Make sure that the box at the start of the line is checked and then click on “Receive and View” to transfer the waveform set to your computer. The default name of the file is psm01.wfm.

Remember that waveset1 is special. It is an automatic recording of the waveforms at the time that monitoring last began.

Viewing Consumption Waveforms

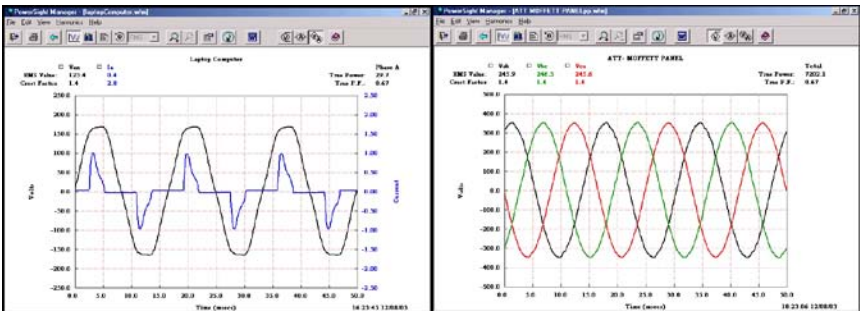
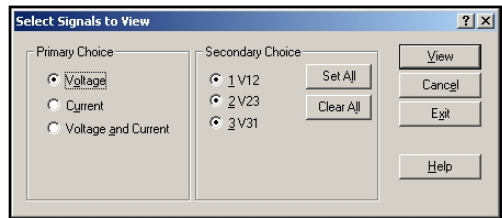
To select a waveform set to view, at the main menu, click on “View Consumption Data”, or click on “View” and then “View Consumption Data”, or click on “File” and then “View Consumption Data”. Any of these approaches will result in the View



Consumption Data screen being shown. In the “Types to View”

section, click on “Stored Waveforms”, if necessary, to select that choice. A list will appear of all wavesets located in the directory shown in the “Look In” box. If you wish to look in a different directory, use the standard Windows methods for changing the directory that is shown. Next, select a specific waveset by double clicking on it.

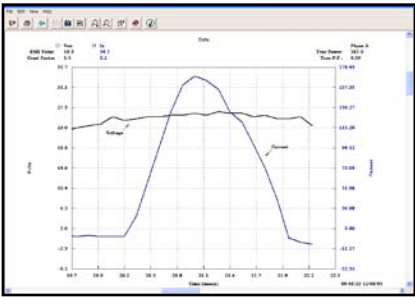
When you select a waveset to view, the “Select Signals to View” window pops open. You make a primary choice of



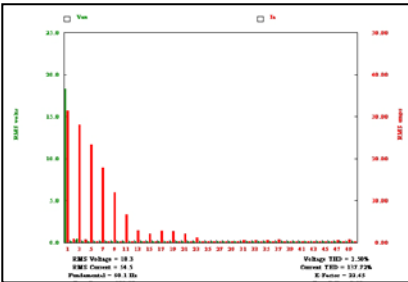
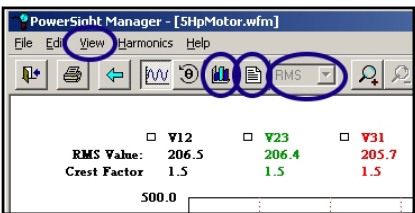
voltage, current, or voltage and current and then you make a secondary choice of which phase or phases to view, then click on “OK”.

There is a wealth of features related to viewing and analyzing waveforms. Voltage and current can be viewed together and multiple phases of signals can be viewed together.

Portions of waveforms can be zoomed into and panned left/right or up/down. Refer to the [Working with Graphs and Waveforms](#) section to learn more about available presentation and analysis features.



You can easily transform any waveform into either a graph of harmonic data or a view the raw data for each harmonic and K factor. To convert a waveform (“time domain” representation) into a harmonic graph (“frequency domain” representation), click on the Harmonic Graph icon or click on “View” then “Harmonic



File Edit View Harmonics Help

RMS Value: 206.5 Crest Factor: 1.5

V12 206.5 V23 206.4 V31 205.7

500.0

File Edit View Harmonics Help

RMS Voltage = 10.3 RMS Current = 16.3 Fundamental = 60.1 Hz Time Power = 165.82

Har	Phase	Van RMS Voltage	Is RMS Current	Mag	Phase
1	0.0	31.33	-90.5	0.039	5.1
2	0.4	-103.8	28.08	43.5	0.035
3	0.1	120.8	23.29	431.5	0.023
4	0.1	136.0	17.74	31.5	0.017
5	0.0	0.0	1.88	164.3	0.008
6	0.0	0.0	4.66	6.3	0.004
7	0.0	0.0	2.03	164.3	0.003
8	0.0	0.0	2.97	46.7	0.003
9	0.0	0.0	2.65	-182.5	0.003
10	0.0	0.0	2.62	46.7	0.003
11	0.0	0.0	1.98	134.5	0.002
12	0.0	0.0	1.18	15.0	0.002
13	0.0	0.0	6.48	139.0	0.002
14	0.0	0.0	6.40	439.7	0.002
15	0.0	0.0	6.40	139.0	0.002
16	0.0	0.0	6.51	132.4	0.002
17	0.0	0.0	6.52	121.1	0.002
18	0.0	0.0	6.52	121.1	0.002
19	0.0	0.0	6.43	142.2	0.002
20	0.0	0.0	6.47	-84.1	0.002
21	0.0	0.0	6.41	177.0	0.002
22	0.0	0.0	6.14	18.2	0.002
23	0.0	0.0	6.38	136.5	0.002
24	0.1	135.7	6.31	24.3	0.002
25	0.1	143.4	6.59	-179.3	0.002

File Edit View Harmonics Help

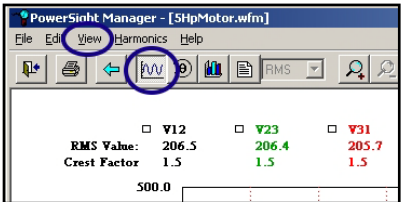
Voltage THD = 2.58% Current THD = 137.72% F-Factor = 22.45 Time T.F. = 1.25

Har	Phase	Van RMS Voltage	Is RMS Current	Mag	Phase
26	0.023	0.0	0.128	179.1	0.002
27	0.001	0.0	0.154	-58.4	0.002
28	0.002	0.0	0.128	92.1	0.002
29	0.007	0.0	0.177	12.7	0.002
30	0.008	0.0	0.153	179.6	0.002
31	0.007	0.0	0.146	-42.1	0.002
32	0.010	0.0	0.176	85.0	0.002
33	0.001	0.0	0.164	0.0	0.002
34	0.005	0.0	0.160	0.0	0.002
35	0.010	0.0	0.163	0.0	0.002
36	0.010	0.0	0.164	51.0	0.002
37	0.013	0.0	0.159	0.0	0.002
38	0.013	0.0	0.159	0.0	0.002
39	0.013	0.0	0.159	0.0	0.002
40	0.013	0.0	0.159	0.0	0.002
41	0.013	0.0	0.159	0.0	0.002
42	0.013	0.0	0.159	0.0	0.002
43	0.013	0.0	0.159	0.0	0.002
44	0.013	0.0	0.159	0.0	0.002
45	0.013	0.0	0.159	0.0	0.002
46	0.013	0.0	0.159	0.0	0.002
47	0.013	0.0	0.159	0.0	0.002
48	0.013	0.0	0.159	0.0	0.002
49	0.013	0.0	0.159	0.0	0.002
50	0.013	0.0	0.159	0.0	0.002

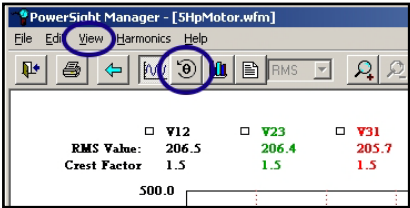
Graph”. To transform a waveform into harmonic data, either click on the Harmonic Data icon or click on “View” then “Harmonic Data”. You have the choice of viewing the amplitudes of individual harmonics as either RMS amplitudes (Vrms or Arms) or as a percentage of the magnitude of the fundamental harmonic (the fundamental is always 100% as large as itself). To change to

magnitude or to percentage, click on the little box to the right of the harmonics icons.

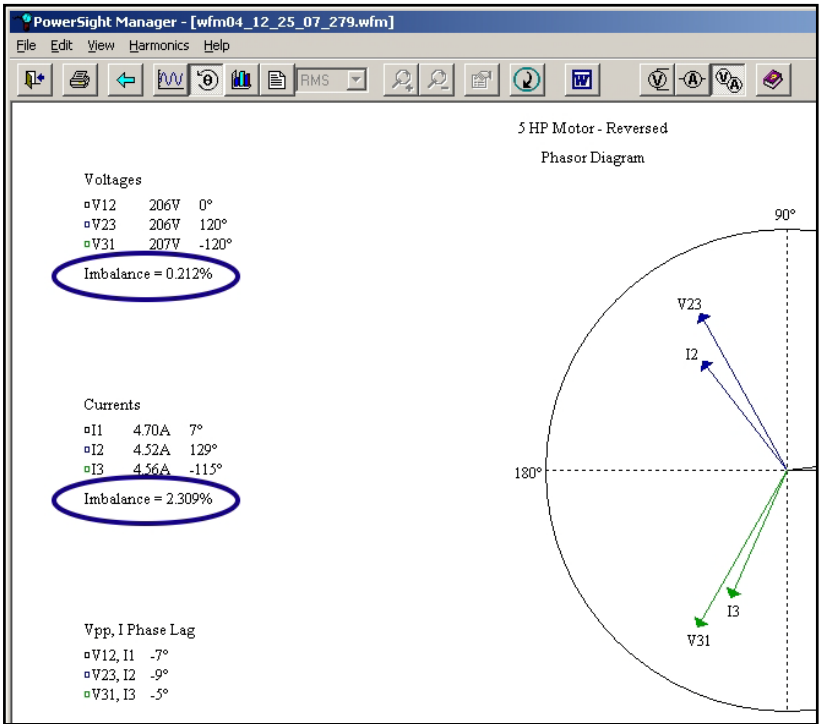
To transform back from one of the harmonic presentations into a waveform presentation, either click on the Waveform icon or click on “View” then “Waveform”.



You can easily display a phasor diagram of the signals by either clicking on the phasor icon or clicking on “View” and then “Phasor Diagram”. Phasor diagrams present each voltage and current as a vector on a graph. A vector combines two measurement properties into one object. In this case, the properties are magnitude and phase lag.

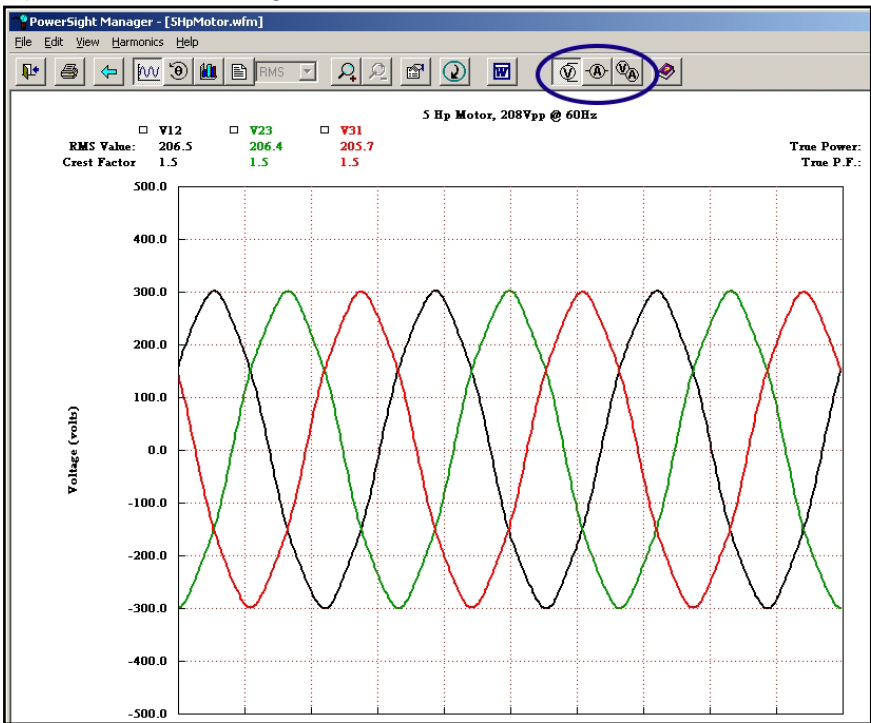


Normally, phase 1 voltage is considered to be the phase reference



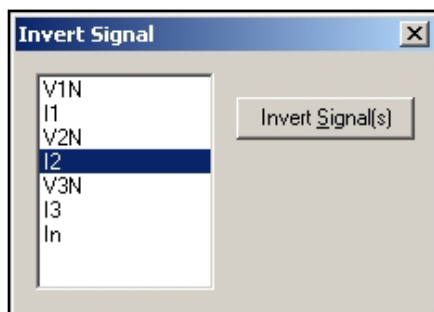
signal, so its angle is 0 degrees. If the phase 1 current lags it, it will be slightly above it. In a three phase circuit, normally the other two phases will be 120 degrees before and after phase 1 and the phase lag of each current relative to its associated voltage will be similar. The data graphs on the left of the phasor display show the actual degrees of all voltages and currents in relation to the phase 1 voltage and show the phase angle between the voltage and current of each phase.

Another convenient analysis feature are the signal selection icons. Clicking on these icons allow you to simply cycle through the individual voltages, currents, or phases. The order of presentation as you click on the icon is phase 1, phase 2, phase 3, and then phases 1, 2, & 3 together.



Sometimes, current probes are attached backwards and the resulting waveforms are 180 degrees phase shifted. There is a convenient way of correcting this error. Any waveform can be inverted by clicking on “View” on the command bar, then “Invert Signals”, then by clicking on the signals you wish to invert, then

“Invert Signal(s)”. If you save the waveform file, the change becomes permanent.



Monitoring Power Consumption

Introduction

When PowerSight is first turned on, it operates like a reporter, describing what it sees. New measurements are generated each second that replace old measurements. Old measurements are discarded. These are the “present” values that are displayed as you press various keys. When PowerSight is instructed to begin monitoring consumption, it not only reports what it sees (the present values), it also generates summary information about the entire monitoring session and about each logging period.

Summary information includes:

- maximum values during the session and logging period
- minimum values during the session and logging period
- average values during the session and logging period

These summary statistics are of great value to you as you ask questions such as: "What is the minimum voltage?" "What is the maximum current?" "How much does it cost to run this equipment?" "What is the average load?" "When is my peak demand period?"

The PS2500 measures most basic measurement types (such as voltage, current, power, and power factor) once each second. The present value that is presented on the screen is the most recent measurement during the previous second. The maximum value that is recorded into each record of the consumption log is the maximum of the once-per-second measurements during that logging period. The minimum value that is recorded into each record of the consumption log is the minimum of the once-per-second measurements during that logging period.

The maximums, minimums, and averages of each logging period are “logged”. This is the act of recording summarizing information once every logging period. With PowerSight, the logging period is set by the user, whereas the measurement updating period is always once per second. This insures that you don’t miss valuable information related to the actual power used and the maximums and minimums present.

After you direct PowerSight to stop monitoring, all the information remains available to you in the data log that is in PowerSight. The contents of the data log are not displayed on PowerSight's display. To obtain the information, it must be uploaded from PowerSight to your computer using the PSM software. The data is recorded into a file in a plain text format that may be easily imported into spreadsheets, databases, and word processors. In addition, PSM has extensive graphing and printing capabilities.

Only one data log exists within PowerSight at any given time. Thus while logging of consumption is proceeding, the data log is growing by one record after each log interval. When logging is stopped, the data log no longer grows, but it is still available. The data is preserved even if the unit is turned on and off repeatedly.

While monitoring is in progress, asterisks, "*", appear on both ends of the bottom line of the display. They flash on and off each second to assure you that monitoring is in progress. When monitoring stops, you are assured that monitoring has ended by the absence of the flashing asterisks, "*".

Please Note: Before you start monitoring, verify that PowerSight's wall-charger is charging the internal batteries. The internal batteries won't operate PowerSight for many hours without assistance. Verify that the red charging indicator light is shining through its hole near the DC input jack.

Basic Consumption Data Logging

The basic PowerSight unit logs aspects of energy consumption as described in the previous section. There are many different modes of operation and data logging options available to ensure that you can measure and record just about anything you need to. To simplify things, we provide a default data logging setup and have that installed when you receive your unit, so you are ready to begin logging under general circumstances. The default data logging setup is:

- Logging period = "3" minutes. This means that every 3 minutes, a new record is created that includes all the variables that are requested by the setup. For instance, if maximum I₁

current was one of the requested variables, each record would include the maximum I₁ current of the previous 180 seconds (3 minutes). After one hour, there would be 20 records (60/2= 20) in the log. Three minute logging period was chosen because it allows you to log for a reasonably long period of time with a reasonably short period between records. Of course, your needs may vary from this, in which case you can easily customize the setup. This is discussed in the “[Setting the Logging Period](#)” section.

- Log start mode = “Start manually”. Other modes are available and are discussed in the “[Starting Data Logging](#)” section.
- Log stop mode = “Don’t stop”. This means that if the log fills up, it will continue receiving new data which will be written over the oldest data. This is discussed further in the “[Stopping Data Logging](#)” section.
- [Frequency mode](#) = “Variable, 22-200Hz”. This allows PowerSight to measure the frequency every second and perform measurements whenever the fundamental frequency is in that range. If you do not need to measure varying frequency, it is recommended that you change the mode to one of the fixed frequency modes.
- [Voltage mode](#) = “Phase-Phase”.
- [Power mode](#) = “Always positive”. Unless you are dealing with the unusual presence of regenerative power, this is the recommended mode to operate in.
- Inputs configured for [input ratios](#) of 1:1.
- [Measurement types](#) = standard set of 52 variables.

The default set of measurement types are the maximum, the minimum, and the average of the following variables:

- voltage from phase 1-to-neutral (phase-neutral mode)
- voltage from phase 2-to-neutral (phase-neutral mode)
- voltage from phase 3-to-neutral (phase-neutral mode)
- voltage from phase 1 to phase 2 (phase-phase mode)
- voltage from phase 2 to phase 3 (phase-phase mode)
- voltage from phase 3 to phase 1 (phase-phase mode)
- current in phase 1
- current in phase 2
- current in phase 3
- current in neutral
- true power in phase 1
- true power in phase 2

- true power in phase 3
- VA power in phase 1
- VA power in phase 2
- VA power in phase 3
- true power factor of phase 1
- true power factor of phase 2
- true power factor of phase 3
- fundamental frequency

In addition, the time/date of each data record is recorded.

There are more measurement types than the default set of 52. The maximum, minimum, and average of total true power, of total VA power, and of total true power factor are not defaults, but the averages are derived by PSM from the individual phases when the log is displayed. The seven THD measurements (three voltage phases plus three current phases plus neutral current) are also not defaults. To change the selected variables from the default, the Data Setup feature of PSM must be used (see [“Setting Measurement Types”](#)). The log setup does not change when the unit is turned off. The default setup can be recovered at any time (refer to the [Custom Consumption Data Logging](#) chapter).

With the default setup the log will contain 4569 records. Coupled with the default 3 minute log interval, the default data log will hold summary data for the last 9.5 days of energy consumption (3 minutes x 4569). If 15 minute log intervals are used, the data log will hold the summary data for the last 47.3 days of logging. If logging continues long enough to fill the data log, the default is for each new record to be written over the oldest record of the log. In this way, you could leave a unit logging unattended for months and always have the most recent data available for analysis. To have logging stop when the log is full or to set a programmed start or stop time, refer to the [Custom Consumption Data Logging](#) chapter.

Starting and Stopping Consumption Logging

You can start logging or monitoring power directly by pressing the [Next] button or indirectly via PSM as described in the [Custom Consumption Data Logging](#) chapter.

To start logging using the [Next] button, press it several times until the display says “Hold Down Button To Start Logging”. Press

the [Next] button and hold it down for 2 seconds. Logging will start. You will know it has started because

“Monitoring Has Begun”

will be displayed and

because asterisks (“*”) will

flash on and off at both ends of the second line of the display

while it is monitoring. Logging can also be started at a

preprogrammed time as described in the [Custom Consumption Data Logging](#) chapter.

**Hold Down Button
To Start Logging**

To stop monitoring, you can either turn the meter off or press the [Next] button repeatedly

until the display says “Hold

Down Button To Stop

Logging”. Press the [Next]

button and hold it down for 2 seconds. Logging will stop. You will

know it has stopped because “Monitoring Has Ended” will be

displayed and the asterisks will no longer appear at the ends of

the bottom line of the display.

**Hold Down Button
To Stop Logging**

Receiving Consumption Data Log from PowerSight

To receive a consumption data log from PowerSight, the PowerSight unit must be connected to a computer running PSM.

At the main menu of PSM, the green “Unit

Connected” Status box

must be displayed. At the

Main Menu, you can either

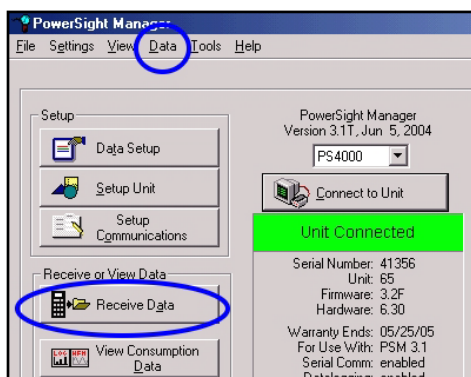
click on the “Receive

Data” button or on the “Data” dropdown button and then “Receive

Data”. In either case, the Receive Data menu will open and all the

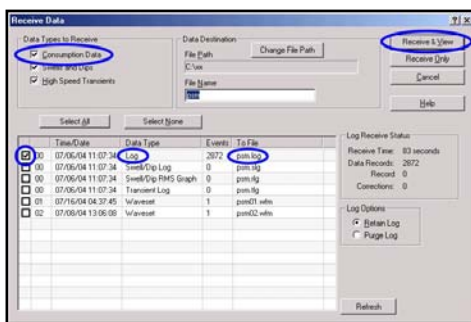
different types of data files in the connected PowerSight will be

displayed.



In the Data Types to Receive section, make sure that there is a check in the box before the line “Consumption Data”. Next, look in

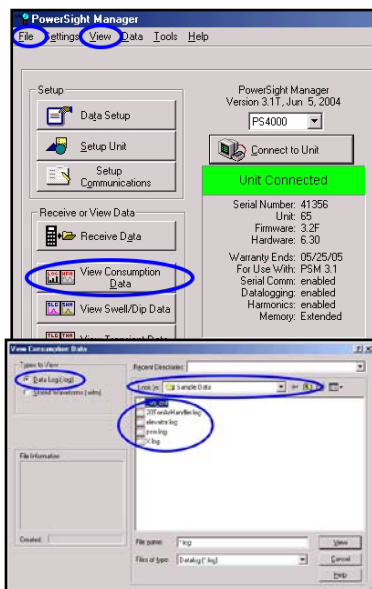
the tabular section for the line with the “Log” data type entry. Consumption logs have a To File name ending with “.log”. Make sure that the box at the start of the line is checked and then click on “Receive and View” to transfer the data log to your computer. The name of the file is based on the entry in the File Name box. For instance if “psm” is entered in the File Name box, the consumption log will be called psm.log. If you want a different root name, change it before receiving the file.



When the desired file has a checkmark to its left, click on the “Receive and View” button to transfer the data log from PowerSight to PSM and immediately start looking at the data. Or click on the “Receive Only” button to simply receive the data log.

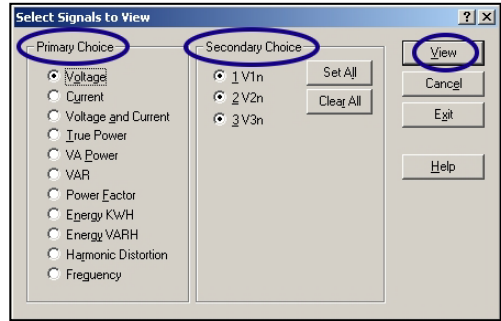
Viewing Consumption Logs

To select a consumption log to view, at the main menu, click on “View Consumption Data”, or click on “View” and then “View Consumption Data”, or click on “File” and then “View Consumption Data”. Any of these approaches will result in the View Consumption Data screen being shown. In the “Types to View” section, click on “Data Log”, if necessary, to select that choice. A list will appear of all consumption logs located in the directory shown in the “Look In” box. If you wish to look in a different directory, use the standard Windows methods for changing the directory that is shown. Next, select a specific consumption log by double clicking on it.



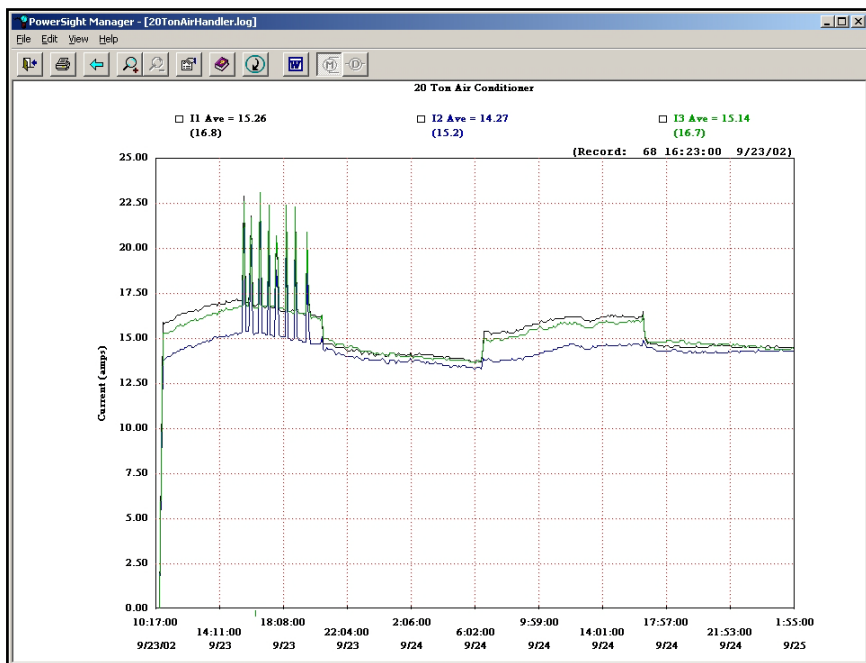
When you select a consumption log to view, the “Select Signals to View” window pops open.

You must make a primary choice of what type of measurement you wish to view, such as Voltage, Current, or True Power, and then make a secondary choice of which phase or phases to view, then click on “View”.



Choices of measurement types that are not available in the log will be “grayed” out.

At this point, a view of the log will be displayed. Generally, if you chose two or more phases, the averages of each of the phases will be graphed. If you chose one phase to view, the maximum, minimum, and average of the phase measurement will be graphed. Of course, average, maximum, or minimum will only be displayed if that measurement type was included in the data setup.



To learn ways to manipulate, interpret, and present the data for better data analysis or improved presentation, refer to the chapter on [Working with Graphs and Waveforms](#).

Deleting Log Data in the Meter

The data in the data log resides in long-term battery-backed-up memory in the meter, so it is not lost when the meter is turned off or even if the rechargeable ni-cad battery runs down. If an SD card is inserted, the data log is also automatically transferred to the SD card. If logging continues long enough to fill up the internal memory of the meter, it may be written over (unless logging is set to stop when full). However, if an SD card is inserted during logging, data will continue to be appended to the file on the SD card as the data in the meter is written over. This means that the most recent data is always available in the meter and, if an SD card was inserted during logging, all the data is available on the SD card.

When a new monitoring session is initiated, you have the option of having the new session data appended to the old log or to replace

the old log. If you choose to replace the old log, that data inside the meter is lost forever. However, if an SD card was inserted prior to starting the new session, the old log is still available on the SD card.

There may be times that you wish to erase all data in the meter. This can be accomplished by pressing the [Setup] key repeatedly until the option "Clear Internal Memory?" is presented. If you press [Yes], all data is erased in the meter.

Custom Consumption Data Logging

Introduction

PowerSight has many optional ways of operating that allow you to accomplish almost any type of power logging task you may wish to do. It does this by allowing you to make choices in the areas of:

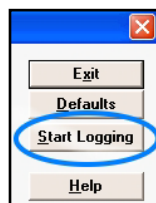
- when or how to start logging
- when or how to stop logging
- how often to create records
- what data measurement types to include in the log
- what voltage measurement mode to operate in
- what frequency measurement mode to operate in
- what power measurement mode to operate in
- how to define the inputs.

Each of these general areas will be covered in the following sections.

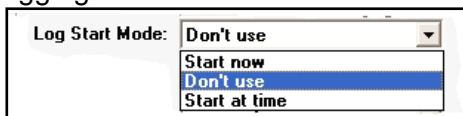
The collection of choices that are made on how to operate is called a “setup” file. You can use the “default” setup file, supplied by Summit Technology or you can create, store, and retrieve your own.

Starting Data Logging

There are several methods to initiate data logging. One method, if PowerSight is connected to a PC is to click on the “Data Setup” button on the main menu of PSM and then clicking on the “Start Logging” button. No matter what method is used to start logging, you can always know if PowerSight is logging. If logging is in progress, there will be flashing asterisks, “*”, appearing on both ends of the bottom line of the PowerSight display.



The other methods of starting logging can be set within the Data Setup screen by clicking on the Log Start Mode dropdown box. First, there is the choice of “Start now”.



If this is selected, when the custom setup is sent to the attached PowerSight, it will immediately start logging. If you click on “Start at time”, a box will open in which you can set the time and date at which to start logging. Once the custom setup is sent to PowerSight, that date and time will be stored in the unit, until a new date and time are written over it. This is a great way to synchronize several PowerSights to start logging at the same time, so there data logs can be synchronized. It is also a great way to log for a specific number of minutes or hours or days or whatever when combined with the mode of stopping data logging at a specific date and time. Finally, it is the best way to insure that logging begins and continues in the same timeframe that the utility calculates demand period.

The final option is “Don’t Use”. If this is selected, logging can only be started by the user manually directly it to start.

Stopping Data Logging

The default mode of operation is for PowerSight to not stop logging until it is turned off. There are several other modes of operation that can be selected in the Data Setup screen.

“Stop when full” instructs PowerSight to stop logging when the log fills up. This is helpful if you don’t want to lose the data from the beginning of the data logging session and may not be back to get the data before the log fills up.

Another mode is to select “Stop at time”. If this is selected, then a box opens that you can enter a date and time for the logging to end. This is helpful if you want logging to end at a specific time or if you want it to end after a specific number of minutes, hours, days, or whatever.



The image shows a screenshot of a software interface. On the left, the text "Log Stop Mode:" is followed by a dropdown menu. The dropdown menu is open, showing four options: "Don't stop", "Don't stop", "Stop when full", and "Stop at time". The first "Don't stop" option is highlighted with a blue background.

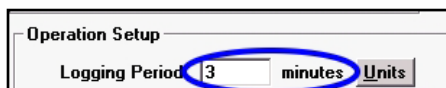
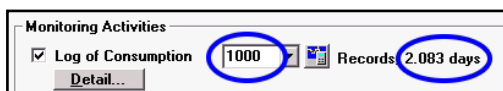
Log Stop Mode:	Don't stop
	Don't stop
	Stop when full
	Stop at time

The option of “Don’t Stop” allows logging to continue even after the log is completely full. New data will be written over the oldest data. This allows you to leave a unit logging continually and always have the most recent data available for analysis.

Setting the Consumption Logging Period

One of the most important settings is the choice of logging period. This is the length of time between the creation of data records. This has no effect on the measurement rate or the sampling rate. Unlike inexpensive data loggers that only take measurements when a record is created, PowerSight measures all its variables every second, regardless of the recording rate. This is very important when logging power, since loads typically vary greatly and quickly. The default setting for logging period is 3 minutes. This means that after 180 measurements (180 seconds are in 3 minutes) a record is made containing all the measurement types specified by the setup. If maximum power is one of the measurement types, then the maximum power of all of the cycles during the preceding 180 seconds will be recorded into the log.

Since the data log fills up one record at a time, if the logging period is set for a large number, it will take quite a long time to fill the log, whereas if it is set for a small number, it can be filled much faster. The log capacity is displayed in the upper left of the “Data Setup” menu, just above the selection area for logging period. In the example shown, the logging period is set for 3 minutes and the time to completely fill the log is 2.083 days.



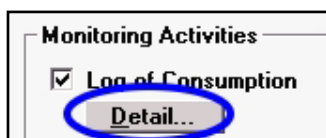
To change the logging period from minutes to seconds or from seconds to minutes, click on the drop-down box at the right end of the “Logging Period” line in the data setup. To change the number of minutes or seconds, simply change the number to what you want. When you are satisfied, you can save the custom setup to a file or send it to the attached PowerSight.

Setting Measurement Types

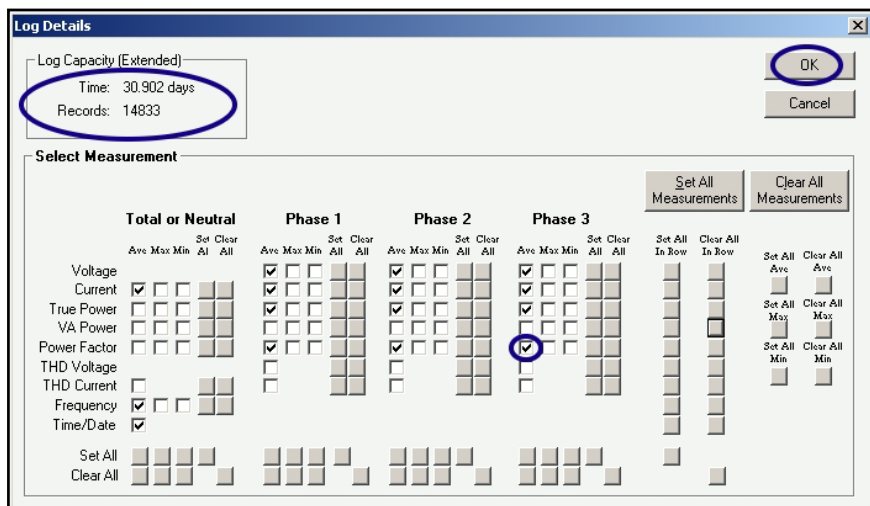
In addition to the measurement types listed in the default data log, the following measurement types can be included in each record of a custom data log:

- average true power of all phases combined
- maximum true power of all phases combined
- minimum true power of all phases combined
- average apparent power of all phases combined
- maximum apparent power of all phases combined
- minimum apparent power of all phases combined
- average true power factor of all phases combined
- maximum true power factor of all phases combined
- minimum true power factor of all phases combined
- THD of voltage in phase 1
- THD of voltage in phase 2
- THD of voltage in phase 3
- THD of current in phase 1
- THD of current in phase 2
- THD of current in phase 3
- THD of current in neutral.

To inspect or change the measurement types, look to the “Storage” section of the Data Setup menu and click on the “Detail” button below the “Log of Consumption” line.



Selecting which measurement types to add or remove from the log setup is as simple as clicking on the box next to the measurement type. In the illustration shown, you can see that the average



power factor of phase 3 is selected, because there is a checkmark in the box that is highlighted in its row and column position.

As measurement types are added or removed, the capacity of the log is affected. If fewer variables are saved, then each log record is smaller and thus more records can be stored in the log, which means that it will take that much longer to fill the log. In the example shown, there is a capacity of 14,833 records in the log, which combined with the logging period of 3 minutes, will take 30.9 days to fill up.

To make quick changes to the measurement types, you can use any of the many speed-editing boxes that allow setting or clearing all in a column or in a row or of a type.

When done modifying the measurement types, be sure to click “OK” and then save the new setup to file and/or send it to the connected PowerSight.

Setting Measurement Modes

The measurement modes and how to check and modify them have already been covered earlier in the manual. Refer to the [Measurement Modes](#) chapter.

Saving and Retrieving Data Setups to File or PowerSight

When you create a customized data setup, it is usually a good idea to save the setup to a file. To do this, click on “Save to File” and give it a filename. A good practice is to give the setup a name that will be displayed. The example says

“CUSTOM”, but a typical

one might be “Motors”. The name can only be eight characters long. Although this name that is embedded into the setup is limited to 8 characters, the filename that the setup is stored under can be of any length that is acceptable to Windows. To load the setup into PowerSight, click on “Save to PowerSight”.

The image shows two side-by-side dialog boxes. The left box is titled "Save Log Setup" and contains three buttons: "Save to PowerSight", "Save to File ...", and "This Setup's name is" followed by a text input field containing the word "CUSTOM". The right box is titled "Get Log Setup" and contains three buttons: "From PowerSight", "From File ...", and "This Setup is ..." followed by a text input field containing the word "Custom".

To retrieve a setup file, click on “From File” and select the specific setup you wish to use. To retrieve the setup presently in a connected PowerSight, click on “From PowerSight”. When the Data Setup menu is first entered, the setup that is shown is the setup from the connected PowerSight. If no PowerSight is connected, the initial setup is the “Default” setup. The default setup can always be recovered by clicking on “Defaults”.

Loading Data Setups from the Memory Card (SD Card)

There are times that it is useful to load a data setup into the meter from the memory card (the SD card). Examples include:

- re-loading the setup into the meter to be sure it is correct
- loading different setups as you move from location to location.

To load a data setup into the meter from an SD card, load the data setup file onto the SD card in an accessible place. Data setup files end with the file extension “.stp”. The meter can detect these files if they are located in either the root directory (the highest level folder on the card, such as “F:/”) or in a directory off of the root that is named the same as the serial number of the meter. For instance, a meter with serial number 12345 can detect data setups that are in the root directory (e.g. “F:/”) or the serial number directory (e.g. “F:/12345”). To detect a data setup on an SD card, go into the Remote Control mode in PSM and press the virtual [Setup] key. It will ask if you wish to load a setup from the memory card. Press [Yes]. It will then look in the serial number directory for data setups. The friendly name of the setup will be displayed. If you want to load the setup, press [Yes], otherwise press [No]. If there are no data setups in the serial number directory or you do not accept any of them, it will next look in the root directory to see if there are data setup files. It will then ask if you wish to load any of them. If there are no data setups in the root directory or you do not accept any of them, it will ask again if you wish to load a data setup from the memory card.

This functionality makes it easy to load multiple setups onto an SD card to support a test plan including multiple locations and involving multiple meters.

Saving Data Setups to the Memory Card (SD Card)

It is beneficial to store a copy of the present data setup onto the SD card to document how a monitoring session was set up. This is done automatically when an SD card is installed. Each time monitoring starts and an SD card is in the meter, a serial number directory is created if it is not already present and a logging directory is created to hold the various files created by the monitoring session. A copy of the data setup is stored in the logging directory at that time. As an example, say a meter with serial number 12345 has an SD card installed that will be read on your computer as drive F and say monitoring was started at 11:22:33 on June 24, 2012. You could encode the date as 120624 to show the last two digits of the year, then 2 digits for the month and 2 digits for the day. You could encode the time as 112233 to show two digits for the hour, two digits for the minute, and two digits for the seconds. Combining all this, you would find the following setup file when you read the SD card on your computer: F:/12345/120624_112233/12062411.stp.

This setup file can be used again if placed in the serial number or root directories and it can be useful if there is a question about the data at the end of the monitoring session.

Restoring the Default Setup

The default setup can be restored to PowerSight at any time. The easiest method is to press the [Setup] key several times until the message "Restore Default Setup?" is displayed on the meter. Press the [Yes] key.

Another method is to connect the meter to PSM, click on the "Remote Control" button at the main menu, and use the Remote Control screen to virtually press the keys as described in the previous paragraph.

The third method is to connect the meter to PSM, click on the "Data Setup" button at the main menu, then click on the "Defaults" button, and then click on the "Save to PowerSight" button in the "Save Log Setup Section", and then click "OK" and let the default setup transfer to PowerSight.

Report Generator Software

Introduction

PSM comes with a Report Generator Software program. The Report Generator software provides concise reports to summarize and document findings. Comparison reports are excellent for presenting before/after comparisons of power usage and projected cost. Separate logs can be compared or sections of the same log can be compared for this analysis. Summary reports summarize the data of a log or a designated section of the log. The reports can be data only, or can combine data and graphs.

Generating a Report

To generate a report, either click “File” and then “New Report” at the main menu of PSM or run the program “Report.exe” located in the same directory of your computer that psm.exe is installed in.



The “Report Information” screen will now be displayed. This screen allows you to enter general information that will be printed on the report, such as the title of the report and contact information about the preparer of the report, so the reader can contact him. When you are done entering the information, click on “Next”.

The “Report Type Selection” screen will now be displayed. You must choose between doing a summary report or a comparison report. A summary report provides a concise summary of data from one consumption log. This is great for preparing a report of a load study. A comparison report compares

data from one log to the data of another log. Or it compares one section of data of a log to another section of data in the same log. This type of report is great for preparing “before” and “after” reports to verify energy savings or to prepare longitudinal reports, documenting how performance or load has changed over time. When you are done entering the information, click on “Next”.

The next screen is a “Datalog Information” screen. In this screen, specify what log is to be used for the summary report or for the “before” column of the comparison report. If you do not want to use all the records of the log, select a starting time and/or an ending time in order to discard records outside of those times. This can be especially important in comparison reports, because you generally want to compare equal “before” and “after” timeframes. When you are done entering the information, click on “Next”.

If you are doing a comparison report, another Datalog Information screen will appear. In this screen, specify what log is to be used for the “after” column of the comparison report. Adjust the starting and ending records to use, just as you did in the previous screen. If you need to go back and amend your previous entries, just click on the “Back” button and make your changes. When you are done entering the information of this screen, click on “Next”.

The next screen is the “Log Details” screen. Each measurement type that can be included in the report has its own checkbox. They are organized in a matrix that allows ease of locating a specific signal and ease in enabling or disabling entire columns or phases of them. Any checkbox with a check in it, will appear in the report.

The Log Details screen also has a checkbox to direct graphs to be included in the report. If this box is checked, each variable will have a graph only included. The data of the graph will only be during the time period specified in the Datalog Information screen. A word of caution here: if your computer is under-powered or has limited extended memory and you select all of the variable types and checkmark either of the graphics boxes, the report program may slow down or even fail. The solution would be to either select less variables or remove the checkmark from the graphics box.

The Log Details screen also has a box for entering a KWH cost rate. This will be used in the report for all cost estimates.

When you are satisfied with the selections, click on “Next” to obtain the report.

Viewing a Report

The report appears on screen and is in a “rich text” format. You can edit and format the report within any word processing application. At the top is the title that you entered, followed by information about the source of the data (filename, start time, and end time). The example shown is a comparison report, so there is information about the source of the “before” data and separate information about the source of the “after” data.

After the source information is the main body of the report. Each measurement type is listed in the first column. The “Before” column is the one number summary for the measurement type for the “before” time period. If it is an average (like “Voltage, Phase 1, Avg.”) the value is the average over the “before” timeframe. If it is a maximum (like “Voltage, Phase 1, Max.”), it is the maximum over the “before” timeframe. If it is an estimate (like “Cost, estimated per month”), it is an estimate of what the value would be for one month if the “before” data continued for the entire month.

After the “Before” column, is the “After” column. This provides the summaries for the measurement types during the timeframe of the “after” data. The next column is a statement of the units associated with the “before” and “After” columns. For instance, the “Units” for voltage measurement types is “volts”.

The next column is the “Change” in the value of the “After” column from the data in the “Before” column. The values of this column use the same units as the “Before” and “After” columns (such as “volts”). At the far right is the “%Change” column. This presents what percent the “before” data has changed in going from “before” to “after”. A negative number represents a decrease. Therefore the example shows an estimated cost savings of 4.9%, which represents a project savings of \$19.02 per month for this one system.

20 Ton Air Handler					
Before Upgrade			After Upgrade		
File 20TonAirHandler.log			File 20TonAirHandler.log		
Test began at 9/23/02 10:17:00			Test began at 9/24/02 1:55:00		
Test ended at 9/24/02 10:15:00			Test ended at 9/25/02 1:55:00		
Measurement	Before	After	Units	Change	%Change
Voltage, Phase 1, Ave:	266.8	267.7	volts	0.9	0.3 %
Voltage, Phase 2, Ave:	269.5	270.7	volts	1.2	0.4 %
Voltage, Phase 3, Ave:	267.0	267.9	volts	0.9	0.3 %
Current, Phase 1, Ave:	15.3	15.0	amps	-0.3	-2.0 %
Current, Phase 2, Ave:	14.2	14.2	amps	-0.0	-0.2 %
Current, Phase 3, Ave:	15.1	14.9	amps	-0.3	-1.7 %
Current, Neutral, Ave:	0.0	0.0	amps	0.0	0.0 %
Current, Neutral, Max:	0.0	0.0	amps	0.0	0.0 %
Current, Neutral, Min:	0.0	0.0	amps	0.0	0.0 %
Total True Power:	10124.6	10005.4	Watts	-119.2	-1.2 %
Total VA Power:	11945.0	11831.5	VA	-113.5	-0.9 %
Power Factor, Phase 1, Ave:	0.84	0.83		-0.00	-0.1 %
Power Factor, Phase 2, Ave:	0.84	0.84		-0.00	-0.4 %
Power Factor, Phase 3, Ave:	0.87	0.86		-0.01	-0.9 %
Energy, Total Elapsed:	242.992	240.129	KWH	-2.863	-1.2 %
Cost, Total Elapsed:	\$48.60	\$48.03		\$-0.57	-1.2 %
Cost, estimated per month: (at \$0.20000/KWH)	\$1481.27	\$1461.78		\$-19.49	-1.3 %
Report Prepared By: Ken Rose Miles Engineering 1676 140th Ave. Twin Falls, ID 95616					
Phone: 925-944-1212					
Email: sales@bjwl.com					

Following the main body of the report is the information about how to contact the preparer of the report for follow-up.

The pages after this have the graphs for the measurement types during the study period. If it is a comparison report, they are presented with the before graph followed by the after graph.

Other Functions of PowerSight

Calibrating PowerSight

PowerSight is calibrated at the factory and automatically adjusts itself every second during normal use. However, in order to ensure that the meter continues to meet its specifications, provision has been made for you to quickly recalibrate it yourself.

In order to calibrate the meter, you need access to highly accurate 240.0V, 200.0A, and a highly accurate HA1000 current probe.

To calibrate voltage for a PS2500, at the main menu of PSM, click on the “Remote Control” button. On the representation of a keypad that is displayed, press [Input Ratios] then press [No/Reject] twice to get to the display “Calibrate Voltage?” Then press [Yes/Accept]. Attach the highly accurate 240.0Vrms to V_{1N} and press [Yes/Accept].

To calibrate current for a PS2500, at the main menu of PSM, click on the “Remote Control” button. On the representation of a keypad that is displayed, press [Input Ratios] then press [Yes/Accept] repeatedly to get to the display “Calibrate Current?” Have one current probe attached to I₁) Press [Yes/Accept]. Measure the highly accurate 200.0 Arms and press [Yes/Accept].

Administrative Functions

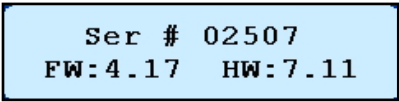
A collection of functions that are neither measurements nor calibrations are collected under the heading of administrative functions. They include:

- Identifying the unit
- Viewing the options that are loaded
- Reporting the warranty expiration date
- Changing the time and date
- Changing the initial displayed greeting
- Setting the communications rate
- Enabling/Disabling 2 Current Mode

All administrative functions are available while operating in Remote Control mode in PSM by pressing the [Admin] key on the screen and following the directions. Many are also available by pressing the [Next] repeatedly when the meter is first turned on.

Identifying the unit results in the following being displayed:

- Serial number of the unit (its unique identity)
- Digital Processing revision level (algorithms used for measurement)
- Firmware revision level (what level of software is active within PowerSight)
- Hardware revision level (what level of hardware compatibility it is).

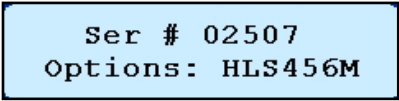


Ser # 02507
FW: 4.17 HW: 7.11

These identifiers are important in any communications with Summit Technology about your unit.

Viewing the options that are loaded results in a display such as:

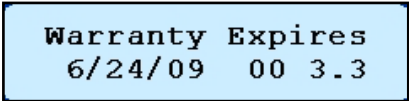
This display indicates that Extended Memory ("M") is active. This information may be important in communications with Summit Technology.



Ser # 02507
Options: HLS456M

Checking the warranty expiration date results in a display such as:

The date, 6/24/09 is the date that the warranty expires on the product. Contact Summit Technology to extend the



Warranty Expires
6/24/09 00 3.3

warranty prior to that date since re-instating the warranty after that date will cost extra. The next number is for the use of Summit Technology personnel. The final number is the highest level of PowerSight Manager software that the unit is presently eligible to work with.

Other Functions within PSM

Introduction

In addition to the many power analysis functions of PSM that have been presented in previous chapters, there are several other functions available. These are functions of convenience, functions for setting up attached PowerSight meters, and functions for setting up the PSM program. They include:

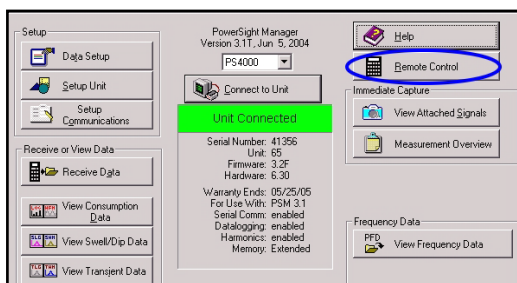
- Operate PowerSight via remote control
- Install new firmware
- Setting the initial greeting of the connected PowerSight
- Setting the time of the connected PowerSight
- Setting the cost/KWH of the connected PowerSight
- Selecting the communications port of your computer
- Selecting the speed of communications of your computer
- Selecting the language of PSM
- Enabling serial communications debug mode

Remote Control of PowerSight

Remote control operation allows operating a connected PowerSight unit from your computer. Your mouse and keyboard actuate the keys of the attached PowerSight. A picture of the PowerSight and its display are visible on your computer screen. This is very handy for operating a unit remotely and for operating and displaying the readings of a unit to many people at one time.



To enter the remote control mode of operation, click on “Remote Control” on the main menu. An image of the connected unit will appear. At this point you can activate individual keys by clicking on them with your mouse or by typing in the



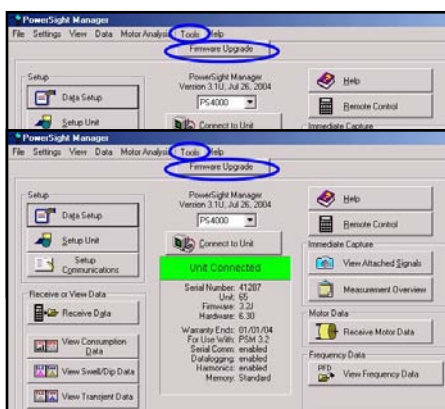
character that is underlined in the image (for instance, type in “P” to activate the “Power” key.

Locating and Installing Software and Firmware

A tradition of PowerSight models is that the products continue to improve and as they improve, those enhancements and features are made available to users who elect to stay under our enhanced warranty (see <http://www.powersight.com/warranty.shtml>). Our PSM software continues to improve and is available for download via the web. The software that resides in PowerSight is called “firmware” (it’s not as soft to change as “software” is, but is not as hard as “hardware”). The PS2500 has the ability to have its firmware upgraded via Bluetooth communications with PSM or via the SD card. This keeps your meter from getting out of date and saves you the trouble of returning it to the factory for an upgrade.

To upgrade the firmware, you must first get the newer version of firmware from Summit Technology from our web site or via email.

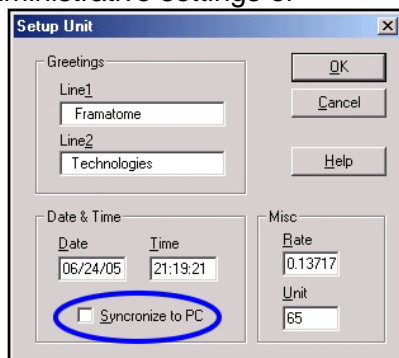
To upgrade via PSM, click on “Tools” on the main menu of PSM and then click “Firmware Upgrade”. The Firmware Upgrade window will pop up. Locate the firmware upgrade file and then click on Upgrade. The process will take several minutes. For detailed instructions, examine the application note UpgradingFirmware.pdf located on your installation CD.



To upgrade via SD card, write the new firmware file onto your SD card in the root directory (the highest folder of the file hierarchy on the card). Turn on your meter, enter Remote Control mode, and click on the virtual [Admin] key many times, until it displays “Upgrade Firmware from Memory Card?” Click on [Yes] and follow the instructions that are displayed.

Setting up Administrative Features of PowerSight via PSM

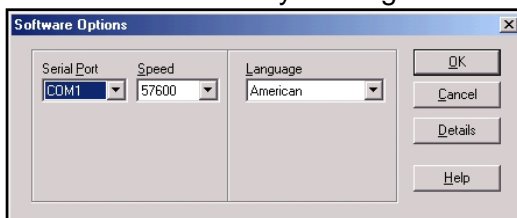
As a convenience, several of the administrative settings of PowerSight can be set within PSM. At the main menu, with a PowerSight meter connected, click on “Setup Unit” and the Setup Unit window will pop up. The present personal greeting, date and time, and KWH cost rate will be displayed. Simply make any changes that you wish and then click “OK”. The changes will be made to the attached PowerSight.



A very important feature is the ability to synchronize the time of the connected PowerSight to the time of the PC. This is nice for quickly and accurately setting the time, but it is also very important for synchronizing multiple PowerSight units in order to correlate logs and events from several units located at different points at a site. It also results in nice presentations of logs from site surveys when all units are programmed to start monitoring at the same moment and their graphs reflect this.

Setting Operational Features of PSM

Several operational features of PSM are grouped together for easy access. To access them, click on “Software Options” at the main menu. The Software Options window will pop up. You can select the serial port used for communications by clicking on the Serial Port box. You can adjust the speed of communications with an attached PowerSight by clicking on the Speed box. This speed is the speed of the Bluetooth link, not the speed of data being fed to it. Therefore it should not affect the general throughput of the data. You can click on the



Language box to change the language of the user interface. Clicking on “British” will result in a European representation of the date (date/month/year). Clicking on “American” will result in a North American representation (month/date/year).

Putting it all Together (Monitoring for the First Time)

This section is intended to insure that you will be successful in your first (and later) monitoring attempts. There are several ways to start monitoring. If you wish to use the default values, simply turn the unit on, press [Monitoring On/Off], then [Yes/Accept] (to indicate that you wish to start monitoring), [No/Reject] (to indicate you do not want to combine the new log with the existing log inside the unit), and then [Yes/Accept] (to affirm that you want to erase the old log in the unit). Monitoring will then begin and continue until you stop it or turn the meter off.

The remainder of this chapter assumes that you wish to use the computer to customize or at least check your monitoring settings prior to starting monitoring. The computer must be running the PowerSight Manager (PSM) software that comes with the meter and the computer must be connected to the PowerSight using the communications cable that comes with the meter.

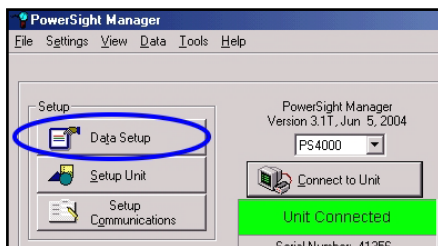
There are three ways to start logging. PowerSight can start immediately by command of PSM, can start at a time and date set by PSM, or can start when turned on and connected to power. If you wish PSM to command PowerSight to start logging, then you must have the computer with you when you connect PowerSight up for logging. The other methods can be set up at another time and location and then PowerSight can be transported to the site of logging.

The first step is to set up or check the parameters for logging.

1. Review the chapter [Communication with PowerSight](#) to ensure that Bluetooth communications are established between the PC operating system and the meter after the meter is turned on.

2. Enter PSM and note that PSM has successfully connected to PowerSight. This will be clear by the box on the main menu with the words “Unit Connected” appearing within a large green banner. Note that the box also says “Serial Comm: enabled” and “Datalogging: enabled”.

3. Click on “Setup Data” and review the setup that is in PowerSight. Review the section on [Custom Data Logging](#) and make any changes that are needed in the setup and store it to PowerSight and perhaps



save it to a file. For instance, check to see how many records can be recorded, given the choice of variables, and check the length of time that logging can proceed before the log will fill up. If either of these items is too small, remove unneeded variables or change the logging interval. Make sure the logging interval is short enough to have at least 10 records in the log before you end logging. Less than 10 records will not look presentable when graphed. Generally, strive to have at least 100 records in a log. That would allow for 10 data points in each column of the graph.

When PowerSight is at the site where it will be used:

1. Hook up the voltage leads and current probes to the circuit being monitored referring to the appropriate diagrams of the [Connecting to PowerSight](#) chapter.
2. Insert the power plug into the 12VDC jack on the right side of the meter as described in the [Connecting to Power](#) section. Power for the meter will come from a wall charger or from an LDC (line-to-DC converter). If you have an LDC accessory, attach its leads as shown in the [Connecting to Line-To-DC \(LDC\) Converter Accessory](#) section. If you are going to monitor just a few hours and the meter’s internal battery is fully charged, you can skip this step.
3. Turn PowerSight on. It will automatically analyze the connections and advise you of any problems it sees. If it is in the “start when power is present” mode of operation, it will automatically start logging after you step through any suspected errors.

4. You may want to also take a snapshot of the waveforms and look at them for errors, if you have a computer handy. Refer to the [Verifying Connections using PSM](#) section.
5. If you intend to have PowerSight start monitoring by direct command via the keypad or via PSM, this is the time to do it. Otherwise it will have already started logging or it will when any programmed start time and date arrive.
6. Regardless of how PowerSight is directed to start logging, when it starts it will automatically capture a simultaneous set of waveforms and stores it separate from the log for your later use. This collection is saved as waveset1.
7. When you are done logging, if you have a laptop handy, use PSM to capture another set of waveforms, giving it a unique name. Combining this waveset with the one that was automatically captured when logging began gives a before and after picture of the power for use in later presentations or as a troubleshooting aid if the data log appears to contain bad data. Waveset1 is always the set that is automatically stored when logging last began.

Working with Graphs and Waveforms

General

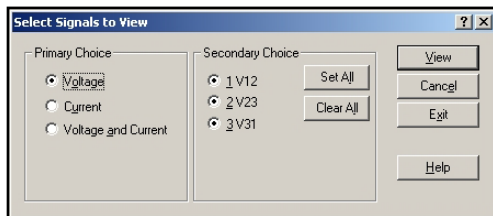
It is important to us to allow you to work with and manipulate the various graphs and waveform presentations in PSM. We try to make the features that accomplish this look and feel the same throughout the program so you can handle all waveforms and graphs in the same way as much as possible. This is one of the areas in which we continually improve the product and our software updates will allow you to benefit from these improvements over time. This section presents the general methods we have for analyzing, manipulating, and presenting the data. The [Viewing Consumption Waveforms](#) section presents additional material that relates just to waveforms.

The types of analysis and manipulation features are:

- Selection of signals to view
- Attaching labels and titles
- Changing the color scheme
- Setting the scale
- Printing and saving as Windows bitmap graphic
- Redo (get new data)
- Zooming and panning
- Viewing data

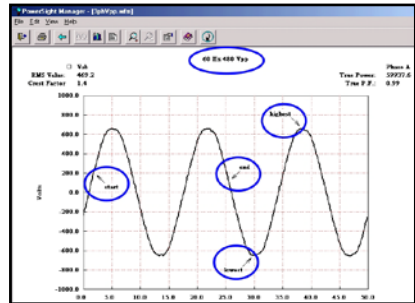
In order to ease selecting the signal you wish to see and to avoid cluttering the presentation, we use an approach of primary choice and secondary choice.

This is a simple two-step process. First you choose a primary choice. That results in only being presented with the appropriate secondary choices.

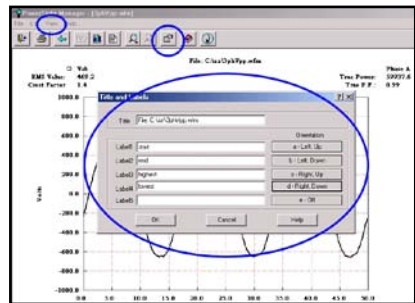


Often, the presentation of a graph can be enhanced by changing the title at the top from the filename to something more descriptive. This does not change the filename, but it may

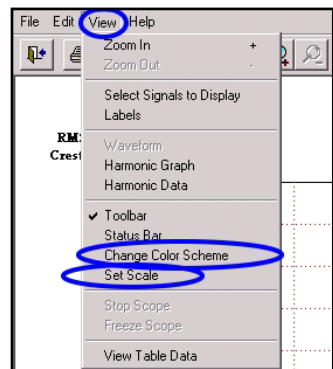
improve the look of the graph. Also, points of interest can be brought out in a presentation by adding labels to the chart. The label consists of some text and an arrow. To create labels or titles, click on View and then Labels or click on the Modify or Add Label icon.



Normally, the scale of a display is set automatically by PSM to give the best size presentation of the data. However, when doing “before” and “after” comparisons, it is best to have identical vertical scales, otherwise a small “after” number may appear to be larger than the “before” number. You can control the vertical and horizontal scales by clicking on “View” and then “Set Scale”.



Normally, the color of the signals is set automatically by PSM to give good color contrast on a color monitor. However, that contrast may not stand out on your monitor or on your color printer or especially with your black and white printer. You can control the colors used to display signals by clicking on “View” and then “Change Color Scheme”.



Whatever is displayed can be printed by clicking on “File” and then “Print”. It can also be saved as a Windows bitmap file by clicking on “File” and then “Save as BMP”.

A very handy feature is the “Redo” icon. Whenever it is visible, clicking on it gets fresh data to look at. If you are viewing the attached signals and you click on this, another set of waveforms will immediately be captured, assigned a new file name, and

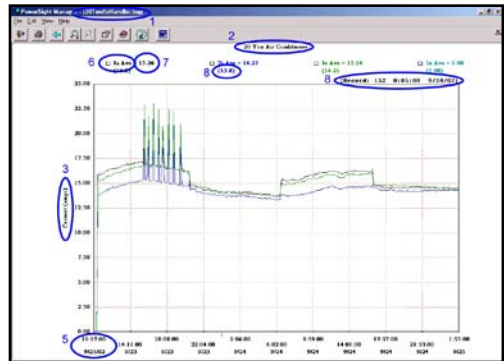


displayed. Similarly, if you have the high frequency spectrum analyzer option (FAO) and you click on the icon, a new spectrum analysis will be conducted and displayed. On the other hand, if you are looking at a stored data file, clicking on this icon will allow you to choose other data files of a similar type to view.

Reading Graphs and Waveforms

Graphs and waveforms have similarities in the ways they are presented in order to quickly understand what is displayed. Examples of the various graphs and what the various sections mean follow.

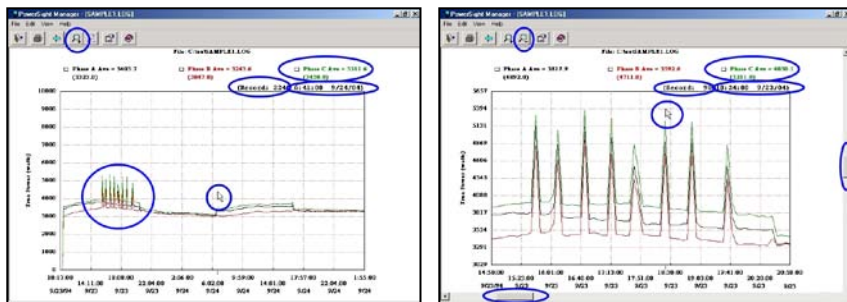
- 1) The name of the file that is being displayed appears in the top border. If you want to determine what directory the file is in, click on "File" and then "Save As" to see the directory location.
- 2) The name of the graph or waveform set appears at the top of the graphical portion of the screen. The default name is the name of the file, including the directory path. You can enter a name of your choice, by clicking "View" and then "Labels".
- 3) The name and metric of the vertical axis tells what type of measurement is being displayed and what the unit of measurement is. When the graph combines different types of measurements (such as when displaying voltage and current) there will be a vertical name and metric on the left side and a different one on the right side of the graph.
- 4) The horizontal axis is usually time. Logs have time and date stamps to help determine when events occurred and how long they lasted. Other graphs and waveforms have metrics of seconds or milliseconds. Displays of triggered graphs or waveforms usually start with a negative number. This is an indication of how far in advance of the triggering event that point is.



areas that you don't want displayed (for instance, you may only want one week of a 30 day log displayed for printing).

There are multiple ways to zoom in on an area of interest. The easiest is to position your cursor at the upper left corner of the area you wish to expand and then left-click-and-hold-down and "drag" the cursor to the lower right. As you drag the cursor, a box will appear on the screen and it will grow as you move the cursor down and to the right. When you release the mouse's left button, the area that was within the screen will expand to fill the screen. Other ways to zoom in are to click on the zoom-in icon (a magnifier with a "+" on it), or to click on "View" and then "Zoom In", or to type "+" on the keyboard and then do the same click, hold, and drag operation that was previously described. To zoom out, you can click on the ZoomOut icon (the magnifier with a "-" on it), or you can right-click and click on "Zoom Out", or you can click on "View" and then "Zoom Out".

The examples below are of a log of true power of an air conditioning unit and of a zoomed-in portion of the same log. The



Zoom In and Zoom Out icons are circled. The example on the left does a good job of communicating the overall operation of the air handling unit that was being monitored. There is a circled area of special interest in this graph where the power has several repetitive peaks. The example on the right does a good job of focusing in on this area of particular interest.

The example on the left above showing the full log has several features of interest highlighted. Notice that the cursor is positioned near the center of the display. The data associated with that point appears in the heading, in parentheses. Specifically, the cursor is positioned on Record 224 of the log.

The timestamp of that point is 6:41:00 on 9/24/04. The value of the average phase 3 power for that record is 3450 watts, whereas the average of all the average phase 3 power points that are displayed is 3511.6 watts.

The example on the right above showing the zoomed-in portion of the sample log has the cursor positioned above a special point of interest, a point where one of the peaks in the power occurs. Looking at the circled information, you can quickly identify that the data at that point is contained in record 90, which started at 18:24:00 on 9/23/04, and the value of the average Phase 3 power at that point is 5211 watts, whereas the overall average of the average phase 3 power points that are displayed is 4030.1 watts. Notice that the overall measurement has changed from 3511.6 to 4030.1 because it only refers to the data that is shown.

When you print what is displayed, the cursor and all values within parentheses will not appear on the printout.

It is important to note that when a measurement type that is graphed is an “average” (such as “power, Phase 3 Avg”), the summary value at the top is the average of all the averages displayed. When it is a “maximum” (such as “V₁₂ max”), the summary value at the top is the maximum of all the maximums of the data appearing on the screen. When it is a “minimum” (such as “I₂ min”), it is the minimum of all the minimums shown.

Another helpful feature for graphical analysis is the ability to “pan”. Notice on the zoomed-in example above that there are scroll bars circled, one at the bottom and one at the far right. You can scan the data at a magnified level by either doing a left-click-and-hold on one of the slides and then dragging it either direction in the scroll bar or by clicking on the arrowheads at either end of the scroll bar. This can be very helpful for finding oddities or spotting small data patterns.

Determining Log Capacity

There is no simple formula for estimating the capacity of a data log, but there is a simple way of determining the capacity by entering their PowerSight Manager (PSM) software and clicking on the Data Setup button on the main menu. At the upper left of the Data Setup window will be the number of records that can fit in the log and the amount of time it will take to fill the log. If any of the logging parameters are changed on the screen, the effect on capacity will be immediately updated.

When the capacity is acceptable, it can be sent to the connected PowerSight unit or stored to file for later use. This is an easy and general purpose way of determining log capacity.

Data Setup

Log Capacity (Extended)

Time: 9.458 days
Records: 4540

Choose Measurement Types ...

Operation Setup

Logging Period: 3 minutes Units

Log Start Mode: Start manually

Log Stop Mode: Don't stop

Input Frequency: Variable, 45-66Hz

Voltage Mode: Phase-Neutral

Power Mode: Always positive

Define input ratios and names

The following tables provide log capacities for a variety of logging intervals if you use either the “Default” setup for PowerSight or a custom setup created just for comparison purposes. This illustrative setup is typical of one intended for general logging of power. It is called “CustomSample”. The CustomSample setup has only the following variables selected, using the data setup feature:

- Time/Date
- Voltage, phase 1 average
- Voltage, phase 2 average
- Voltage, phase 3 average
- Current, phase 1 average
- Current, phase 2 average
- Current, phase 3 average
- Current, Neutral average
- Power, phase 1 average
- Power, phase 2 average
- Power, phase 3 average
- Power Factor, phase 1 average
- Power Factor, phase 2 average

- Power Factor, phase 3 average
- Power Factor, Total average.

The results of these tables are not intended for use with other custom log setups.

Log Interval	Default Setup Time Capacity	CustomSample Setup Time Capacity
1 second	75.7 minutes	4.3 hours
5 seconds	6.3 hours	21.3 hours
10 seconds	12.6 hours	42.6 hours
15 seconds	18.9 hours	2.7 days
30 seconds	37.8 hours	5.3 days
45 seconds	2.4 days	8.0 days
60 seconds	3.2 days	10.7 days
90 seconds	4.7 days	16.0 days
2 minutes	6.4 days	21.4 days
3 minutes	9.5 days	32.0 days
5 minutes	15.8 days	53.3 days
10 minutes	31.5 days	3.5 months
15 minutes	6.8 weeks	5.3 months
30 minutes	3.1 months	10.5 months
45 minutes	4.7 months	15.8 months
60 minutes	6.2 months	21.0 months
90 minutes	9.4 months	2.6 years
99 minutes	10.3 months	2.9 years
Log Capacity	4,569 records	15,344 records

Troubleshooting & Frequently Asked Questions (FAQ)

1. Why can't I connect to the PowerSight Manager software?

See the [PSM Troubleshooting guide](#) on your installation CD or view the guide on our web site (www.powersight.com) for detailed help.

2. How do I connect to my laptop if it does not have Bluetooth communications capability?

You can buy a Bluetooth Adapter from Summit Technology (order BTA). This adapter will plug into one of your USB ports. Other brands will likely work, but cannot be guaranteed to work with PowerSight.

3. Why can't I receive any data from my PowerSight?

See the [Data Troubleshooting guide](#) on your installation CD or view the guide on our web site (www.powersight.com) for detailed help.

4. Why doesn't my PowerSight read Voltage/Current correctly?

There are many reasons why PowerSight may not be reading voltage or current. First, check that you have all the voltage and current leads connected correctly. Then if that doesn't solve your problem, check that the frequency mode of the PowerSight is in the correct mode for your situation.

5. Why doesn't my PowerSight turn on?

This is most likely caused by a dead battery. Plug in a power supply and see that the red LED at the end of the meter is turned on. Make sure you use the correct rated power supply for the PowerSight that you are using.

6. How long will the battery last?

A fully charged PS2500 will run 8-10 hours. The PS2500 is fully charged in about 12 hours (8 hours is adequate). The battery should not need replacement for at least 2 years. Only authorized service personnel can open the meter or replace the battery.

7. Why does my voltage/current reading seem to be off?

This may be caused by an input ratio left inside the meter from a previous data setup. Change the input ratio to 1:1 for all input signals and try again. (see the sections on [Changing Input Ratios in PowerSight and in PSM](#)) You should also check your frequency mode and make sure that all metal contacts of clamp-on current probes are clean and securely fastened.

8. How long will it take for my memory to fill up during data logging?

This depends on your logging period, the amount of data being stored, and the amount of memory available. As you change these values, using our PowerSight Manager (PSM) software, it will automatically display how long it will take to fill the log. To see this, just click on the "Data Setup" button at the main menu of PSM. The "Monitoring Activities" section is where you can choose what data types and variable types you want PowerSight to record into memory. You can also press the "Time" button 3 times to see the "time to fill log" displayed on the screen of PowerSight.

9. What is a Logging Interval?

A logging interval is the length of time between PowerSight recording measurements into its internal data log. Each second, PowerSight summarizes measurements such as voltage and current for all phases and the end of the logging interval, these one second summaries are condensed into an average, a maximum, and a minimum which are then recorded into the log. For instance, if you set a logging interval of 15 minutes, PowerSight will keep track of the average, maximum, and minimum of all measurement types during each second of the 15 minute period and store these summary values into the data log. The logging interval can be set from 1 second to 99 minutes. The

logging interval has a direct effect on the time it takes to fill the log. For example, if PowerSight has its consumption log capacity set to 1000 records and its logging interval set to 1 minute, it will take 1000 minutes for PowerSight to fill the data log. Each record of the log will contain the maximum, minimum, and average of 60 seconds of measurements.

10. How do I use the Data Setup feature of PSM?

Refer to the chapter on [Custom Consumption Data Logging](#).

11. How often should I have my PowerSight calibrated?

We recommend that you have the PowerSight calibrated once every year. We also recommend that all voltage and current probes be sent in with the unit for calibration.

12. Can I use other manufacturers' current probes with PowerSight?

Unfortunately, no. Only current probes made by Summit Technology can be used with the PowerSight Products. This is because all of our probes are "self-identifying". This means the user does not have to use an input ratio to use the probes. Also, unlike most other manufacturer's probes, ours are individually calibrated at the factory. If there is a special need to use a certain probe, let us know at support@powersight.com.

13. How do I measure voltages above 600 volts AC?

You must use our High Voltage probes to directly measure above 600 Volts. You can use either the "5kVP" or the "15kVP". Also see "How to Measure 4160V Service" on the installation CD for more information. Alternatively, you can hook up to metering PTs and enter their ratios into PowerSight in order to record the primary voltage.

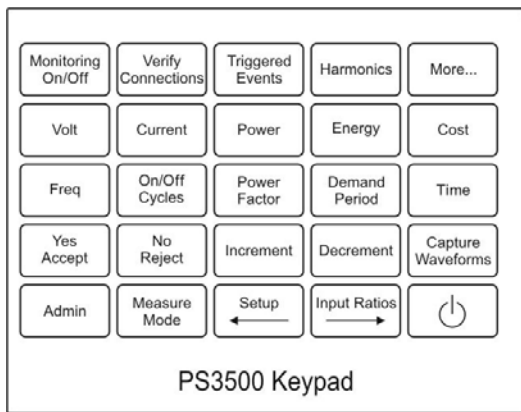
14. How do I measure a large load carried by 2 or more parallel conductors?

There are two approaches you can use. Either use one of our flexible current probes (they are 24 inches long and can form a

circle of 7 inches) or clamp your current probe around one of the conductors and enter input ratios to read and record the correct value. See the section on [Measuring Multiple Parallel Conductors](#) for details on how to do this.

Overview of the Remote Control Keypad

One of the best features of PowerSight is its user interface. A surprising amount of capability is quickly available through the touch of a button. We have attempted to make the interface intuitive and flexible. Many functions can be accomplished in several ways.



Here is a quick overview of the functions of each key:

Monitoring On/Off – for starting or stopping of monitoring of consumption, swell/dips, and high-speed transients (and for capturing spectrum analysis data with the FAO option or on-line motor analysis data with the AMD option)

Verify Connections – uses SureStart[®] to determine what potential errors in connections and settings exist

Harmonics – for measuring THD and individual harmonics (combine it with the More button for more information)

More - for getting more detailed information (such as max/min/avg or estimates of per hour/month/year) after pressing one of the other keys

Volt – read phase-phase or phase-neutral true RMS voltage (combine it with the More button for more information)

Current – read true RMS current of any phase or neutral (combine it with the More button for more information)

Power – read true power (watts), VA, or VAR (combine it with the More button for more information)

Energy – read energy consumed (KWH) (obtain estimates with the [More] key)

Cost – read cost of energy consumed (obtain estimates with the [More] key)

- Freq** – read fundamental frequency (combine it with the More button for more information)
- Power Factor** – true power factor and displacement power factor (combine it with the More button for more information)
- Time** – present time, elapsed time, time capacity of log (combine it with the More button for more information)
- Yes/Accept** – for use in answering questions or accepting entries
- No/Reject** – for use in answering questions or rejecting entries
- Increment** – for incrementing letters or numbers
- Decrement** – for decrementing letters or numbers
- Capture Waveforms** – for capturing waveform sets inside the meter
- Admin** – for identifying serial number, hardware/software versions, installed options, or warranty expiration date. For changing the time, date, greeting, or 2 current power mode.
- Measure Mode** – set voltage measurement mode, frequency measurement mode, power measurement mode
- Setup / ←** – for checking if the unit is connected correctly, setting trigger thresholds for capturing events, logging interval, cost of energy, “on” current, and for moving cursor to the left
- Input Ratios / →** – for setting input ratios and for moving cursor to the right
- On/Off** – Turns the meter on and off

Compatibility Guide

Although we attempt to make all products and accessories compatible, there are limitations to what devices and versions can work well together. **The PS2500 must be used with PSM software of at least the 3.3 series.** Compatibility of the PS2500 with Summit Technology accessories is as follows:

Accessories	PS2500
120ADP-a	Yes
120ADP (discontinued)	not compatible (use 120ADP-a)
15KVP	Yes
5KVP	Yes
5KVP (version with ext. box)	not compatible (use new version)
CAS3	Yes
CASW	Yes
CHG1	Yes, for Euro 220V standard
CHG2	not compatible
CHG3	not compatible
CHG4	Yes, for US 120V standard
COMM	not compatible
DC600	Yes
DC-ISO (discontinued)	not compatible
DFV	Yes
DXV	Yes
MEM1	Yes
FAO	Yes
eFX6000	Yes
FX3000a	Yes
FX3000 (discontinued)	not compatible (use FX3000a)
FX5000	Yes
HA10 (discontinued)	not compatible
HA100	Yes
HA150 (discontinued)	Yes
HA1000	all units
HA3000	Yes
HA5	Yes
HA500 (discontinued)	not compatible

Accessories (cont'd)	PS2500
HA-GFD	Yes
LDC (discontinued)	not compatible
LDC2	Yes
LDC3	not compatible
LDC4	Yes
SafeConnect	Yes
SCAS2 (soft operating case)	No
SCAS3 (soft accessory case)	Yes
SCAS4 (soft all-in-one)	Yes

Specifications*

Size

3.88" (9.86cm) Wide × 7.72" (19.61cm) Long × 1.58" (4.01cm) Deep in Hand-held region, 2.14" (5.44cm) deep at the top end

Weight

1.1 pound (0.5 kg)

Operating Range

0 - 50 degrees C (32 - 122 degrees F)

Relative humidity to 70% (non-condensing)

Meets mechanical shock requirements of MIL-PRF

28800F for a class 1 (harshest) environment

Safety and Environmental Protection

CE rated 600V input CAT IV per IEC61010-1:2001

IP40 (IP44 with CAS-W option) per IEC 529

Power Requirement

12 VDC @ 50 ma, wall mount power supply included

Internal Ni-Cad operates up to 10 hours after overnight charge.

Voltage

Input Range: 1 - 600 Vrms steady-state (direct input),
or 600 – 5,000 Vrms with 5KVP probes,
or 600 – 15,000 Vrms with 15KVP probes.

Display Range: 1 - 6 megavolts (using input ratios)

Accuracy: 0.5% of reading (+/- 0.2 Vrms below 400V,
+/- 2 Vrms above 400V)

Measure Rate: Once per second for each input.

Frequency Response: No de-rating of accuracy for
harmonics through 1500 Hz)

Current

Input Range: 0.01 - 5000 Amps, AC or DC with the
proper current probe attached

With HA5: 0.02 - 5 Amps

With HA100: 0.1 - 100 Amps

With HA1000: 1 - 1000 Amps

With eFX3000: 1 – 6000 Amps

(in two ranges, with auto-ranging)

With DC600: 5 - 600 Amps DC

Display Range: 1ma - 6 megamps (using input ratios)

Accuracy: 0.5% of reading plus accuracy of probe
Measure Rate: Once per second for each input.
Frequency Response: dependent on current probe
attached. With HA1000: no de-rating of
accuracy for harmonics through 3900 Hz)

Frequency

Range: DC, 45 - 66 Hz, 360 – 440 Hz fundamental
frequency
DC and 45 - 1650 Hz included in RMS
45 - 3300 Hz for harmonic measurements
Accuracy: 0.5%

Power, Energy, Cost, Power Factor

Display Range: 1 watt - 60 megawatts (using input ratios)
Accuracy: 1.0% plus accuracy of current probe
Measure Rate: Once per second for each phase.

Harmonic Distortion (with HAO option):

Range: Display of THD and individual harmonics
through 25th (1800 Hz) of all signals
With PowerSight Manager software, display
of harmonics through 63rd (3900 Hz)
Accuracy: To within 1% of fundamental

* These specifications are subject to change without notice.



99 Washington Street
Melrose, MA 02176
Phone 781-665-1400
Toll Free 1-800-517-8431

