



# WPM-1

## OPERATING MANUAL AND USER GUIDE

---



[www.wharfedalepro.com](http://www.wharfedalepro.com)



## IMPORTANT WARNINGS & SAFETY INSTRUCTIONS

1. Read these instructions
2. Follow all instructions
3. Keep these instructions
4. Do not block any ventilation openings. Install in accordance with the manufacturer's instructions.
5. Do not install near any heat sources such as radiators, heat registers, stoves, or other apparatus (including amplifiers) that produce heat.
6. Do not defeat the safety purpose of the polarised or grounding plug. A polarised plug has two blades with one wider than the other. A grounding plug has two blades and a third grounding prong. The wide blade or the third prong is provided for your safety. If the provided plug does not fit into your outlet, consult an electrician for replacement of the obsolete outlet.
7. Protect the power cord from being walked on or pinched particularly at the plugs, convenience receptacles, and at the point where they exit from the apparatus.
8. Only use attachments/accessories specified by the manufacturer.
9. Use only with a cart, stand, tripod, bracket, or table specified by the manufacturer, or sold with the apparatus. When a cart or rack is used, use caution when moving the cart and apparatus combination to avoid injury from tip-over.



10. Unplug the apparatus during lightning storms or when unused for long periods of time.
11. **USE WITH AMPLIFIERS** – In order to avoid damage to drivers and other equipment, it is advisable to establish and follow a routine for powering up and powering down a sound system. With all system components connected, turn on source equipment (mixers, signal processors, record and playback units, etc.) **BEFORE** powering up amplifiers. Transient voltages from powering up source equipment can damage speakers if amplifiers are already turned on. Make sure that amplifier volumes are set to their minimum settings and power up any system amplifiers **LAST**. It is recommended that all system components be allowed to stabilize for several seconds before any source signals are introduced or level setting adjustments are made. Similarly, when shutting systems down, turn all amplifiers off first, before powering down any other system components.
12. **CABLES** – Do not use shielded or microphone cables for connection between amplifiers and speakers. Use only approved speaker cables with proper connectors.
13. **CAUTION** – These professional loudspeaker systems are capable of generating very high sound pressure levels. Use care with placement and operation to avoid exposure to excessive volume levels. Permanent hearing damage can result when operated to extreme levels.
14. Refer all servicing to qualified personnel. Servicing is required when the apparatus has been damaged in any way including but not limited to power supply cord or plug damage, liquid ingress, foreign objects in the chassis, exposure to rain/moisture or impact damage. In addition the unit must be serviced when you experience any abnormal operation.



15. CAUTION: These servicing instructions are for use by qualified service personnel only. To reduce the risk of electric shock, do not attempt to perform any servicing other than that contained in the operating instructions unless you are qualified to do so. In addition opening the casing will result in your warranty becoming null and void.
16. Do not install this apparatus in a confined space such as a book case or similar unit. Good ventilation should be maintained around the apparatus and any vents, air-inlets or fans should not be obstructed by objects such as paper, table-cloths, curtains etc.
17. WARNING: To reduce the risk of fire or electric shock, do not expose the apparatus to rain or moisture. The apparatus should not be exposed to dripping or splashing and objects filled with liquids, such as vases, should not be placed on the apparatus.
18. WARNING: To prevent injury, this apparatus must be securely attached to the boom arm in accordance with the installation instruction.
19. WARNING: The mains plug/appliance coupler is used as a disconnect device, the disconnect device shall remain readily operable.



20. This lightning flash with arrowhead symbol within an equilateral triangle is intended to alert the user to the presence of non-insulated “dangerous voltage” within the product’s enclosure that may be of sufficient magnitude to constitute a risk of electric shock.

**WARNING!** To reduce the risk of electric shock, do not remove the cover (or back) as there are no user-serviceable parts inside. Refer servicing to qualified personnel.

The exclamation point within an equilateral triangle is intended to alert the user to the presence of important operating and maintenance instructions in the literature accompanying the appliance.

21.  (Protective earthing terminal) The apparatus should be connected to a mains socket outlet with a protective earthing connection.
22.  Correct Disposal of this product. This marking indicates that this product should not be disposed with other household wastes throughout the EU. To prevent possible harm to the environment or human health from uncontrolled waste disposal, recycle it responsibly to promote the sustainable reuse of material resources. To return your used device, please use local return and collection systems or contact the retailer where the product was purchased. They can take this product for safe environmentally friendly recycling.



# TABLE OF CONTENTS

<b>Important Warnings &amp; Safety Instructions.....</b>	<b>1</b>
<b>Introduction / About the WPM-1 .....</b>	<b>4</b>
<b>Key Features / Contents .....</b>	<b>5</b>
<b>Setup.....</b>	<b>6</b>
<b>Microphone Stand Mounting Procedure .....</b>	<b>7</b>
<b>Wiring Diagrams .....</b>	<b>9</b>
<b>Assembly Diagram .....</b>	<b>11</b>
<b>Mounting Accessories .....</b>	<b>12</b>
<b>Specifications .....</b>	<b>13</b>
<b>Warranty .....</b>	<b>14</b>





## INTRODUCTION

Congratulations on the purchase of your WPM-1 personal monitoring system. The Wharfedale Pro WPM-1 is the result of many years experience in the use, design and manufacture of professional audio products. We take great pride in engineering and building every Wharfedale Pro product and wish to thank you for entrusting us with your sound.

From the time that Gilbert Briggs built his first loudspeaker in 1932, to the present day, Wharfedale have maintained the same standard of quality in components, workmanship and performance.

Please take the time to read this manual completely in order to ensure that you get the most from your WPM-1 personal monitoring system.

## ABOUT THE WPM-1

The WPM-1 from Wharfedale Pro is a personal monitoring solution with a number of great features that suit performers and artists that demand perfect monitor mixes and total control. A 5" full range driver is matched to the on-board processing, EQ and amplification to provide clear, natural and intelligible vocal foldback.

The WPM-1 can be stand mounted with straight or boom mic stands, alternatively the WPM-1 can be placed on the stage itself for maximum versatility. Front panel controls allow you to fine tune your onstage vocal sound and the integration of your monitor mix. With a WPM-1 you no longer get the monitor mix that your engineer supplies, you hear exactly what you want to hear.

The WPM-1 also includes an instrument/line level input and mix output, facilitating use as a small format personal mixer with 3 inputs. This versatile interfacing allows the WPM-1 to fit into the widest range of on stage situations.

The WPM-1 uses the same high tech gas-assist injection moulding techniques as used in our famous Titan Series loudspeakers, ensuring road tough reliability and ultra light portability.



## **KEY FEATURES**

- **75W continuous power output**
- **5" full range driver**
- **Microphone, line/instrument and auxiliary inputs**
- **Microphone thru, line and mix outputs**
- **Vocal volume and EQ controls**
- **Independent master and auxiliary level controls**
- **Switchable output sensitivity**
- **Ultra lightweight gas-assist injection moulded enclosure**
- **Dual angle mic stand receptacles and microphone mounting system**
- **IEC receptacle for AC supply**

## **CONTENTS**

- **1x WPM-1 active personal monitoring solution**
- **1x Stand mount adapter**
- **1x 3/8" Mic clip / boom arm mounting**
- **1x 5/8" Mic clip / boom arm mounting**
- **IEC AC power cable**



## SETUP

The WPM-1 can be used in many different ways to suit the widest range of applications. It's versatile shape and flexible input/output configurations ensure that the WPM-1 can fit into any situation on stage.

The WPM-1 is effective when fed from a mixing console at larger venues or when used as the overall front of house mixer at small shows. It can be used as a floor based wedge monitor while it is equally at home when mounted at the centre of a microphone stand.

Use the following points and diagrams to ensure you get the most out of your WPM-1 in every possible configuration.

### 1. **Observe correct gain structure and calibrate all inputs and outputs.**

Ensure all mic/line/instrument switching is correctly set, when changing the settings or rewiring always check all inputs and outputs.

Do not overload any inputs or outputs.

Be careful with EQ, less is more! Excessive EQ boost can dramatically reduce headroom and increase the risk of feedback.

### 2. **Ensure the WPM-1 is secure.**

Only use heavy duty microphone stands that can withstand the weight of the WPM-1 plus any other accessories including microphones, clips, shockmounts and cables.

Check that the WPM-1 is well balanced and will not tip over.

Ensure that the correct mounting hardware is used for mounting microphone stands.



## MICROPHONE STAND MOUNTING PROCEDURE

1. **Place an appropriate microphone stand on a stable and even surface.**

Ensure that the stand will not cause an obstruction to the stage or front of house area.

Ensure that the polar pickup pattern of the microphone is not within the vertical or horizontal coverage of the front of house system. Poorly positioned microphones will greatly increase the risk of feedback.

2. **Attach the microphone stand adaptor to the threaded shaft on the stand. If you are using a boom stand remove the boom arm and attach the adaptor to the top of the vertical section. The stand adaptor has a thread adaptor to cater for  $\frac{3}{8}$ " and  $\frac{5}{8}$ " sizes.**

Observe the slot at the top of the adaptor, there is a 'key' within the WPM-1 microphone stand receptacle that will fit into the slot. This system will lock the WPM-1 into place and will prevent it from rotating during the performance. The performer will be perpendicular to the slot.

Ensure that the adaptor is securely screwed to the microphone stand.

3. **There are 2 adaptor receptacles, one on the angled section for use with a boom stand and one on the bottom that is for use with straight microphone stands.**

Place the WPM-1 onto the stand adaptor. Take care to allow the weight of the WPM-1 to gently rest on the stand adaptor. Before you release the weight of the WPM-1 make sure that it feels secure and well balanced on the stand.

4. **If you do not wish to mount a boom arm and microphone on the top of the WPM-1 the mounting process is complete and you are ready to make your wiring connections, jump to step 9.**
5. **Screw the boom arm mounting into the base of your boom arm.  $\frac{3}{8}$ " and  $\frac{5}{8}$ " boom arm mountings are provided with your WPM-1.**





6. **Remove the boom arm mount receptacle cover, keep this in a safe place should you need it again for a different application.**
7. **Place the boom arm mounting into the receptacle on the top of the WPM-1.**
8. **Screw the mounting into place by spinning the middle section of the mounting hardware. You can loosen or tighten the top section to adjust the microphone angle or tightness.**
9. **Attach all wiring starting with the audio connections.**

The connectivity will depend on the application.

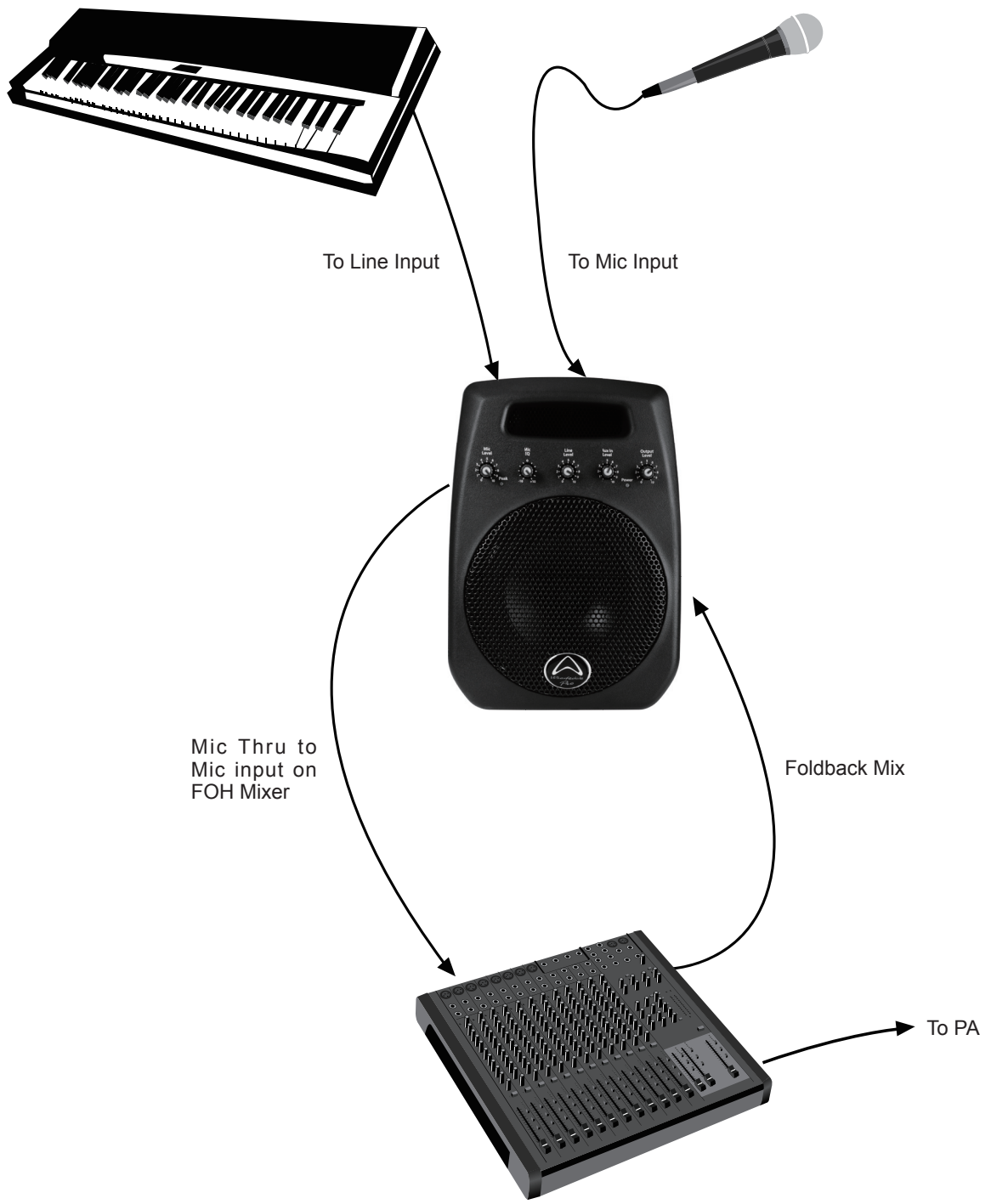
Once all audio connections are complete you are ready to connect the AC supply, always ensure that the power switch is in the off position and that all connected output devices are muted or have gain/volume controls set to minimum.

Ensure that all wiring is neat and safe, take care to avoid creating tripping hazards. Adequate length wires should be used to avoid potential damage to connected equipment.

**When mounting a WPM-1 take steps to ensure that all elements are stable and safe at every step of the setup procedure. If any element feels unbalanced or unsafe revert back to the previous step and ensure that all connections are secure. Ensure that all mounting hardware is appropriate and capable. Incorrect mounting of this product can cause serious injury and damage to property.**

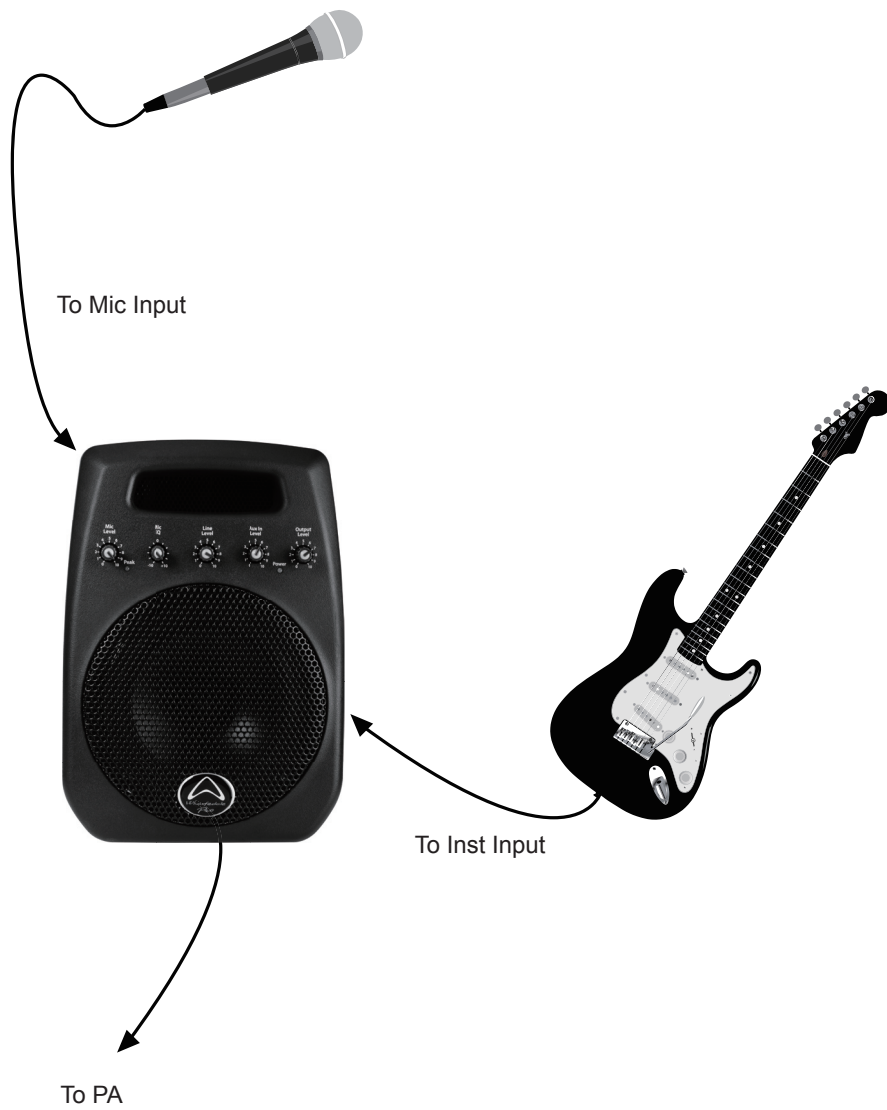


# WIRING DIAGRAM FOR USE WITH A MIXER





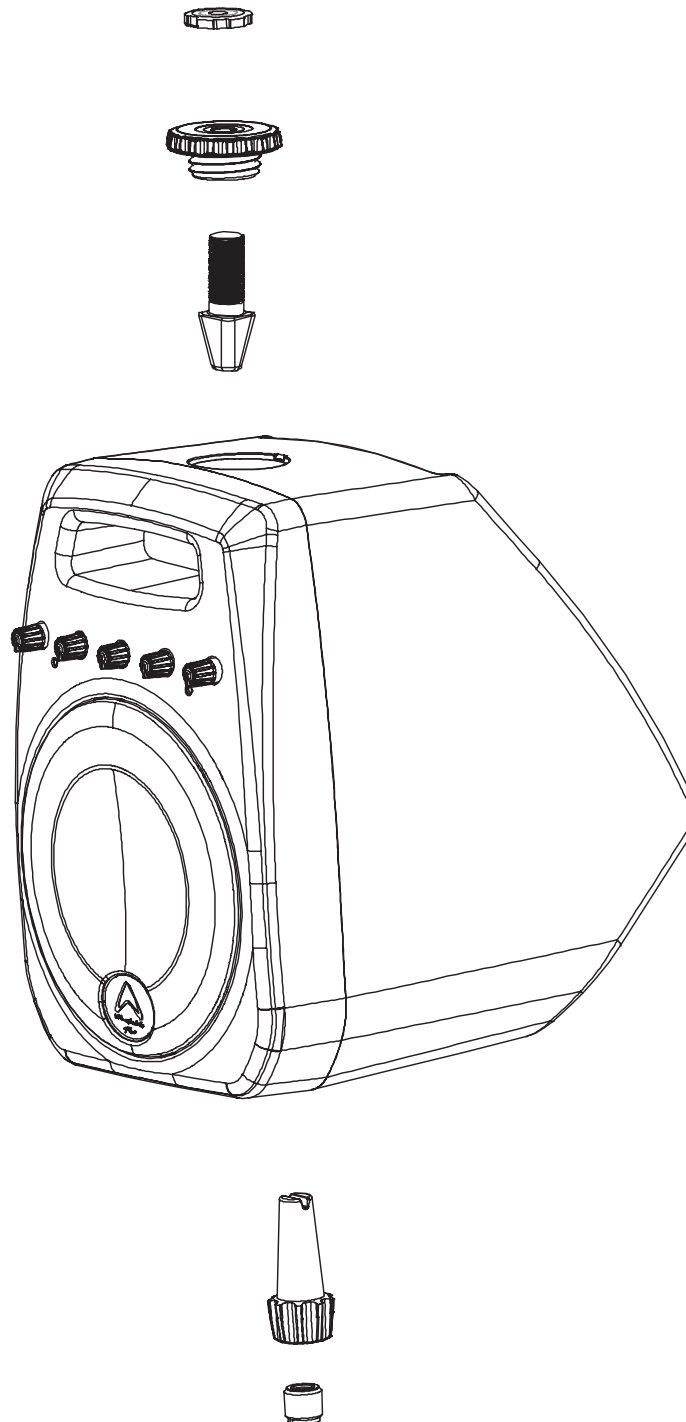
## WIRING DIAGRAM FOR USE AS A MIXER





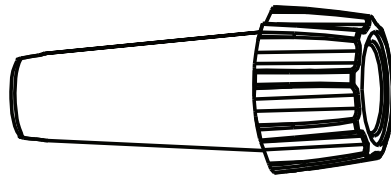
## OPERATING MANUAL AND USER GUIDE

# ASSEMBLY DIAGRAM

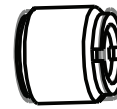




## STAND ADAPTOR

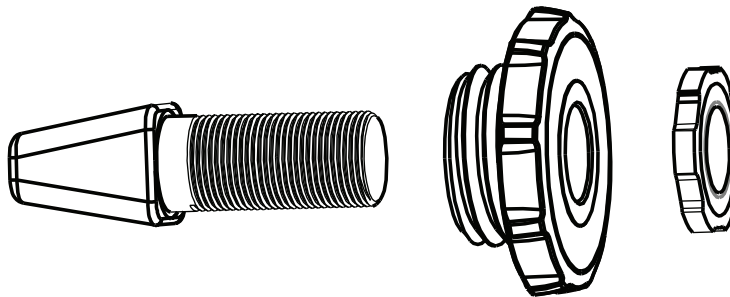


Main Section

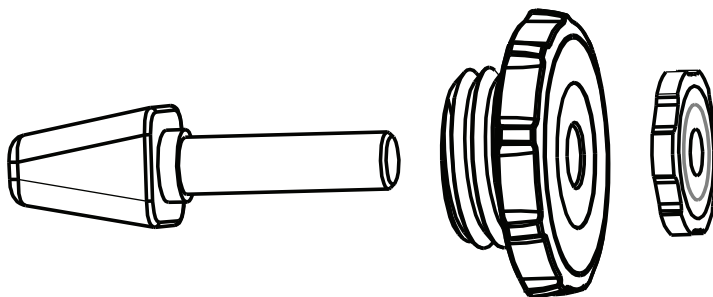


Thread Adaptor

## 5/8" BOOM ARM MOUNT ADAPTOR



## 3/8" BOOM ARM MOUNT ADAPTOR



# SPECIFICATIONS

WPM-1	
<b>System Type</b>	Fullrange
<b>Frequency Response @ +/- 3dB</b>	120-18kHz
<b>Peak SPL</b>	114dB
<b>Power Handling</b>	
Continuous	75W
Music	150W
<b>Driver</b>	
Driver Size	5"/125mm
Frame Material	Steel
<b>Input Sensitivity</b>	
Mic input	-45dBu (-0dBu / -20 dBu)
Line and Aux input	0dBu (0dBu / -20 dBu)
<b>Mic EQ</b>	Peak +/-15dB @2.1KHz
<b>Enclosure</b>	
Dimensions	
(L)	330mm
(W)	315mm
(H)	285mm
Enclosure Type	Vented
Colour	Black
Enclosure material	ABS
Thickness	8mm
Grille Material	Steel
Grille Colour	Black
<b>Microphone Stand Mounting</b>	
Bottom Receptacle	x2
Boom Arm Mount Receptacle	Yes
Rubber Base	Yes
<b>Input/Output Panel</b>	
Microphone Input	Female XLR
Microphone Output	Male XLR
Mic / Line Level	Switchable
Line / Instrument Input	TRS Jack
Line / Instrument Output	TRS Jack
Line / Instrument Level	Switchable
Aux Input	TRS Jack
Mix Output	TRS Jack
Mix Output Pre / Post	Switchable
<b>Weight</b>	
Net	3.5KG
Gross Weight	4.9KG



## **WHARFEDALE PRO LIMITED WARRANTY**

Wharfedale Pro products are warranted of manufacturing or material defects for a period of one year from the original date of purchase. In the event of malfunction, contact your authorized Wharfedale Pro dealer or distributor for information.

\* Be aware that warranty details may differ from country to country. Contact your dealers or distributor for information. These terms do not infringe your statutory rights.





Wharfedale Professional

IAG HOUSE, Sovereign Court, Ermine Business Park Huntingdon, Cambs, PE29 6XU, England

[www.wharfedalepro.com](http://www.wharfedalepro.com)

Wharfedale Professional reserves the right to alter or improve specifications without notice.  
All rights reserved © 2010 Wharfedale Pro. Wharfedale Pro is a member of the IAG Group.

