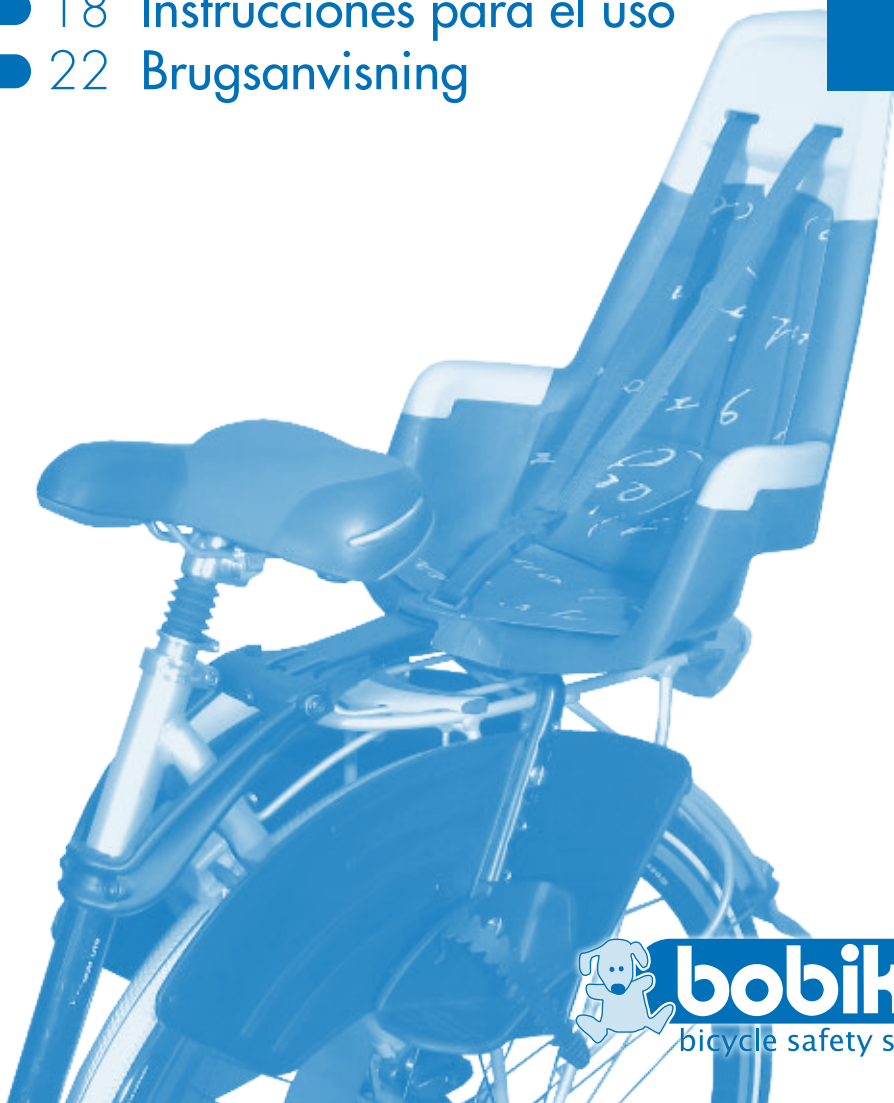


maxi+

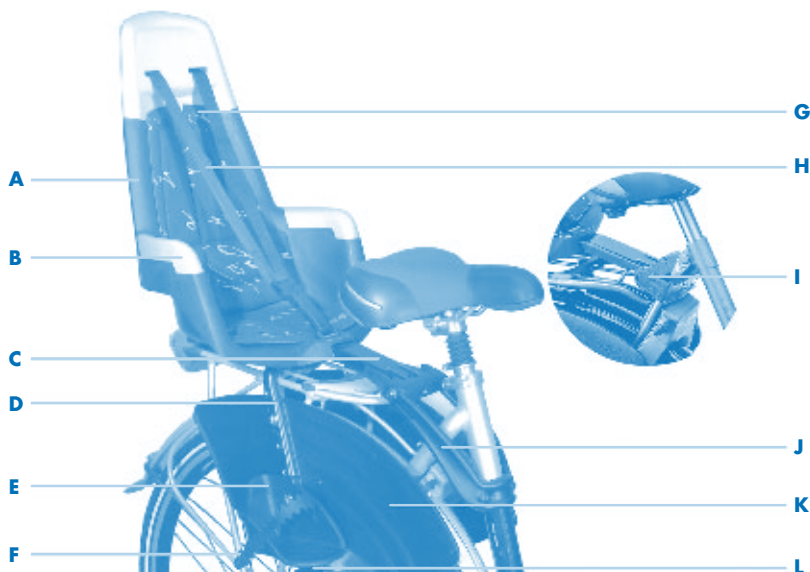
- 2 Gebruiksaanwijzing
- 6 User Instructions
- 10 Gebrauchsanweisung
- 14 Mode d'emploi
- 18 Instrucciones para el uso
- 22 Brugsanvisning



**bobike®**  
bicycle safety seats

[www.bobike.com](http://www.bobike.com)

# legenda/legend/Legende/légende/leyenda/signaturforklaring



- (NL)** **A** Zitje  
**B** Armleuning  
**C** Montagebeugel  
**D** Voetsteunbuis  
**E** Voetbakjes  
**F** Elastisch voetriempje  
**G** Kussen  
**H** Gordel  
**I** Insteekelement  
**J** ATB-beugel  
**K** Voetbeschermpaat  
**L** Montageknoppen

- (GB)** **A** Seat  
**B** Armrest  
**C** Mounting bracket  
**D** Footrest tube  
**E** Footrests  
**F** Elastic foot strap  
**G** Cushion  
**H** Safety belt  
**I** Socket  
**J** ATB bracket  
**K** Foot guard  
**L** Locking units

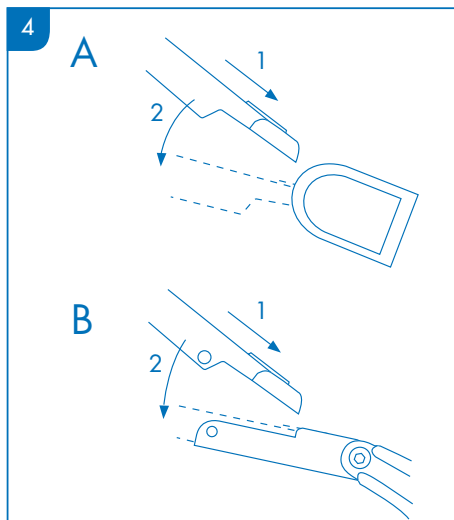
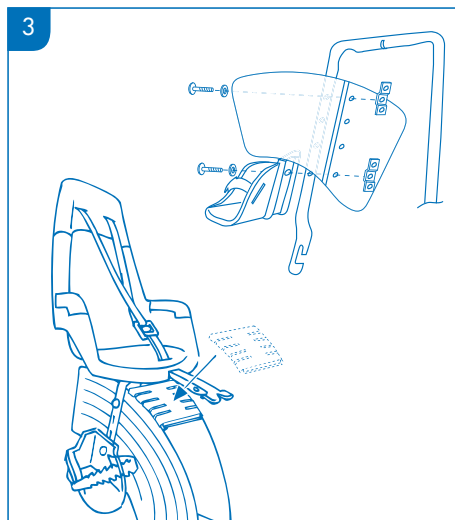
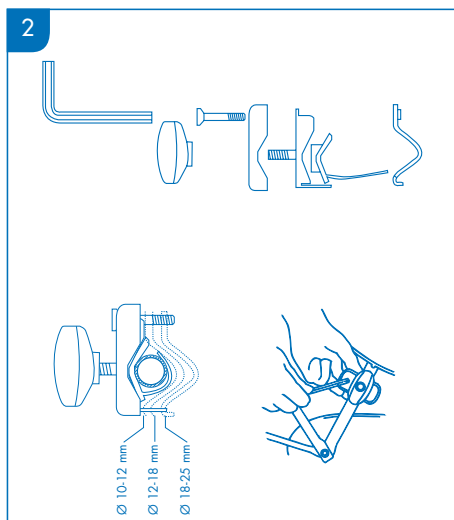
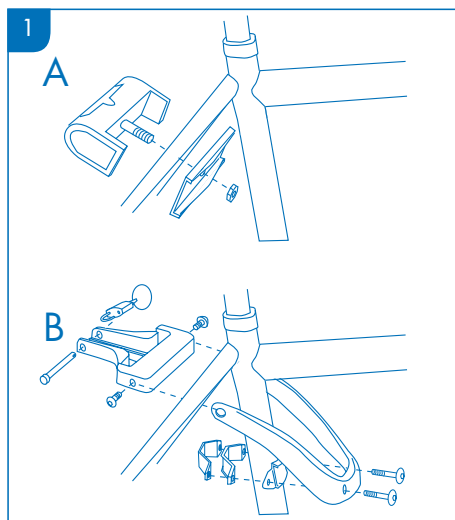
- (DE)** **A** Sitz  
**B** Armstütze  
**C** Montagebügel  
**D** Fußstützenrohr  
**E** Fußstützen  
**F** Elastischer Fußriemen  
**G** Kissen  
**H** Gurt  
**I** Einsteckelement  
**J** ATB-bügel  
**K** Fußschuttsplatten  
**L** Montageknöpfe

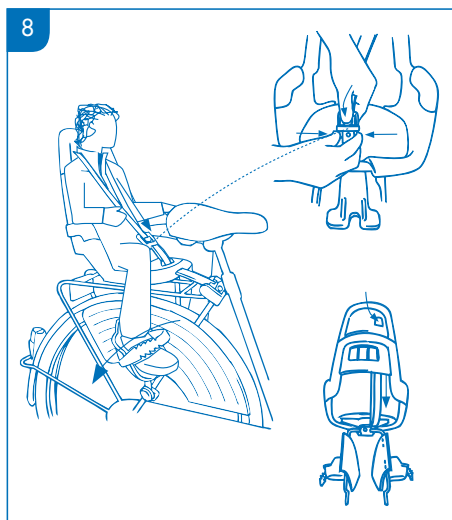
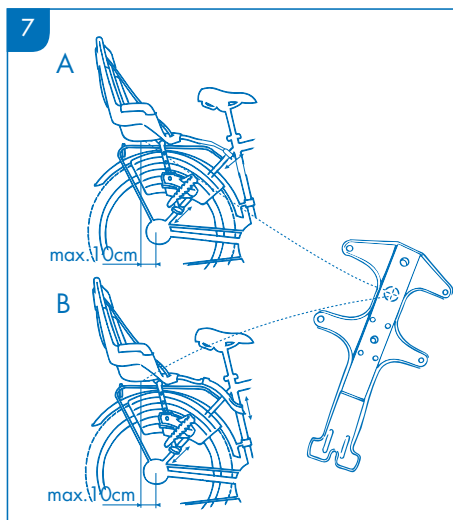
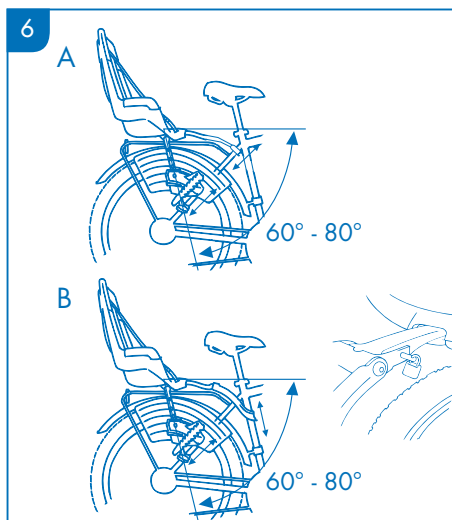
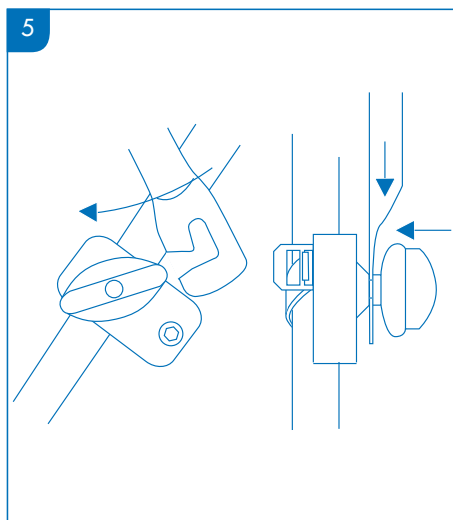
- (FR)** **A** Siège  
**B** Accoudoir  
**C** Etrier de fixation  
**D** Tube de cale-pied  
**E** Cale-pieds  
**F** Sangle élastique pour cale-pied  
**G** Coussin  
**H** Ceinture de sécurité  
**I** Élément de fixation  
**J** Armature ATB  
**K** Plaque de protection pour les pieds  
**L** Boutons de montage

- (ES)** **A** Silla  
**B** Reposabrazos  
**C** Aro de fijación  
**D** Tubo del apoyapiés  
**E** Apoyapiés  
**F** Correas elásticas para pies  
**G** Almohadilla  
**H** Cinturón  
**I** Pieza de acoplamiento  
**J** Abrazadera ATB  
**K** Placas protectoras para pies  
**L** Elementos de fijación

- (DK)** **A** Sæde  
**B** Armlæn  
**C** Montagebøjle  
**D** Stang til fodstøtte  
**E** Fodstøtter  
**F** Elastiske fodremme  
**G** Pude  
**H** Sele  
**I** Indsætningsstykket  
**J** ATB-bøjle  
**K** Fodskånere  
**L** Montagebeslag

## 8 stappen/steps/Schritten/étappes/pasos/skridt





## Bobike maxi+: a safe choice

You on the bike, your child in a bicycle seat behind you, and off you ride. Sometimes we cycle purely for the fun of it, sometimes because we need to and we have a specific destination. Whatever the reason for a bike ride, your child's safety is paramount. By purchasing the Bobike maxi+, approved according to European safety standard EN 14344, you have made a good choice. To ensure proper and safe fitting, it is important to read this user manual carefully first, and then follow the instructions carefully. Keep this user manual in a safe place in case you need to refer to it at a later date. Dremefa, the manufacturer of the Bobike maxi+, wishes you many happy, and above all safe, bicycle rides.

### From 9 months to 6 years

The Bobike maxi+ is suitable for children aged from 9 months to 6 years. We recommend that you use the seat only when your child is able to sit well on its own, at least for the duration of the ride. The maximum weight of a child in the Bobike maxi+ is 22 kilos. For children older than 6 years or heavier than 22 kilos, we offer the Bobike junior.

### Bobike maxi+ accessories

If you want to use your Bobike maxi+ on several bicycles, please ask your stockist about additional mounting sets. For extra safety, you may also want to consider jacket protectors and saddle spring protectors. Finally, the assortment includes safety belt pads and separately available Bobike clothing.

### Maintenance

Bobike child bicycle seats are simple to maintain. The upholstery is attached with Velcro and can be easily removed. The upholstery can be washed by hand and the seat cleaned with a mild detergent. Do not use any abrasive cleaning agents.

### Guarantee

Bobike guarantees that the supplied child's cycle seat is manufactured from durable materials and subject

to strict quality controls. Bobike therefore guarantees this product for a period of one year. In the event of a claim, please present your receipt to your stockist.

### Method of mounting

The Bobike maxi+ can be mounted in two ways, depending on your bicycle. The seat can be mounted using the socket (I) or an ATB bracket (J). When mounting with the ATB bracket, the diameter of the saddle tube must not exceed 50 mm. For both methods of attachment, the width of the baggage carrier must not exceed 160 mm.

The Bobike maxi+ is not suitable for mounting on a bicycle with a carbon frame or on a moped. You must only mount the seat on bicycles that are suitable for carrying the extra weight of the seat and child. You should therefore consult your bicycle's manual or ask your bicycle manufacturer or stockist for advice. Should you have any further queries, please refer to your Bobike stockist or visit [www.bobike.com](http://www.bobike.com).

### Eight steps to a correctly mounted Bobike maxi+

The Bobike maxi+ complies with European safety standard 14344 and is a very safe child bicycle seat. Of course, the assembly must be carried out in the correct way. Run through the eight steps below as accurately as possible. The numbers of the steps match the related drawings. For example, drawing 1A illustrates what is described in step 1A.

There are two options for mounting the Bobike maxi+: either using only the socket (see illustration 1A) or using the ATB bracket (see illustration 1B). If your seat has the TÜV-GS symbol then it is equipped as standard with an ATB bracket and with an extra wheel contact guard (see illustration 3).

#### 1 A Mounting using the socket

Secure the socket (I) to the upright rear fork under the saddle. Secure the opposite half of the

element with key 13, with the flat side against the rear fork. Ensure that the socket is mounted horizontally and with the T-shaped opening facing upwards.

#### **B Mounting using the ATB bracket**

Secure the ATB bracket (J) with the supplied screws, the brackets and the plastic washers to the saddle tube. To do this, take the large bracket together with the plastic washer and the long screws, and place these on the saddle tube from the front. Then take the other plastic washer and the small bracket and place these to the rear side of the saddle tube. Now mount the brackets to each other using the screws and the supplied Allen key. Hand-tighten the screws, because the correct position must still be set. Now mount the plastic socket using the two short screws between the bracket. Ensure that the correct side (opening) is pointing upwards and hand-tighten the screws.

- 2** Now secure both locking units (L) to the rear fork approximately 30 cm below the socket (I). The locking units are suitable for rear forks with a diameter of between 12 and 25 mm. To adjust, insert the clamp bracket of the locking unit in the first, middle or rearmost slot.

Ensure that both locking units left and right are secured at exactly the same height. Hand-tighten the screws and the turn the knobs so as to create a slot of about 1 cm.

- 3** The foot straps (F) must be fitted to the footrests (E) before mounting. Mount the foot guards (K) and the foot supports onto the footrest tube (D).

#### **Adjust the height of the footrests**

To set the correct height of the footrests (E), first measure the length of your child's lower legs from the underside of the knee to the sole of the foot. This measurement must match the distance from the seat to the underside of the footrest. This then gives the height at which the footrests must be mounted.

#### **Mounting the foot guards**

Place one foot guard on the inside of the footrest tube. Place a footrest on the outside of the support

tube and slide the long screw through the washer, the footrest, the support tube and the foot guard. Ensure that the elasticised band of the safety belt, which is attached to the footrest tube, is not trapped between the foot guard and the footrest tube. The elasticised band belongs in the uppermost position below the seat. Secure the nut plate to the inside of the foot guard, parallel to the support tube. Now tighten the screw firmly with a torque of 3 Nm. Mount one of the short screws together with the washer and the nut plate as far from the footrest as possible, so that the foot guard sits securely. After the other foot guard and footrest have been mounted, you can place your seat on your bicycle.

#### **Wheel contact guard**

If your bicycle does not have a baggage carrier then mount the extra wheel contact guard to the foot guards. You can click this securely to the foot guards. If the extra wheel contact guard also fits on your bicycle with a baggage carrier, then secure the guard as well.

- 4** Take the seat and insert the head of the mounting bracket (C) straight and all the way into the socket.
- 5** Turn the footrest tube down, fit the ends into the locking units and tighten the knobs. Ensure that the outer ends of the footrest tubes are placed in the slot as far as possible.
- 6** When adjusting the seat, the surface of the seat must not tip forwards. The child could slide out of it. It is recommended to angle the seatback slightly towards the rear. Ensure that a space of at least 1 cm remains between the seat and the baggage carrier or the mudguard. The seat is correctly mounted when the footrest tubes are at an angle of between 60 and 80 degrees. If the position of the seat is still not right then move the locking units up or down, or adjust the position of the ATB bracket (J) or the socket (I). When the correct position is reached, tighten the locking units and the screws of the ATB bracket or the nut of the socket with a torque of 10 Nm. Tighten the short screws in the plastic socket until the slack is taken up. The steel pin and the lock ensure a

safe connection and prevent the plastic socket from turning. They also act as a safeguard against theft. Note: always use the steel pin and lock for the ATB bracket.

**7** Check that the centre of gravity of the Bobike maxi+ does not lie more than 10 cm behind the rear axle. Carry out this check before you go on a first test ride with your child. The symbol for the centre of gravity (a spot) can be found on the lower side of the mounting bracket (C).

**8** Sit your child in the Bobike maxi+ and check that the chosen setting is correct. If you want to change the setting, always remove your child from the seat first. Always fasten the safety belt and foot straps, even when the Bobike maxi+ is not in use. You can adjust the length of the safety belt on the rear of the seat. Tighten the safety belt by pulling on it at the back of the seat. By depressing the button on the rear of the seat and pulling on the safety belt at the same time, you can loosen the safety belt on the front. In addition to the Bobike coat protectors and foot guards, the foot straps also prevent your child's feet from getting between the spokes or other parts of the bicycle.

Pay attention to how the clasp operates. The buckle on the safety belt must be pushed into the buckle on the seat with the pin (the protruding round bit) pointing towards the front. The pin must go into the hole provided on the front. Check this each time you close safety belt.

### **Extra attention to safety**

- Check whether all parts are properly mounted and set. Tighten the screws and check regularly that all attachments are still firmly and safely secured.
- After fitting the Bobike maxi+, check whether all the components of the bicycle are still working properly.
- After fitting the Bobike maxi+, go on a short test ride with your child.
- Bobike recommends only using the seat when your child is able to sit independently for at least the duration of the ride.

- Additional mounting sets are available separately enabling your Bobike maxi+ to be used on more than one bicycle. Ask your Bobike stockist for information.
- Check whether the bicycle is suitable for mounting the Bobike maxi+ on.
- Check whether the use of the Bobike maxi+ is legally permitted for conveying children in the country where you wish to use it.
- The cyclist must be at least 16 years old in order to carry a child in the Bobike maxi+. The law in this area can vary by country.
- The centre of gravity on the seat must never be more than 10 cm behind the rear wheel axle (also see point 7 in the mounting instructions).
- Check from time to time that your child is not too heavy for the Bobike maxi+. The greatest permissible weight is 22 kilograms. You can carry heavier children in the Bobike junior.
- Before each ride, check that no body parts or articles of clothing interfere with rotating or moving parts of the bicycle. This will help prevent, for example, a foot coming between the spokes or a finger in the brake mechanism.
- Ensure that your child cannot touch any sharp parts such as frayed brake cables.
- Always fasten the safety belt and foot straps, even when the Bobike maxi+ is not in use.
- Ensure that your child is always properly protected against the cold and rain when in the seat. Remember that your child is sitting still in the seat and will therefore get colder more quickly than the cyclist.
- Ensure that your child always wears a properly-fitting safety helmet.
- The seat can become very hot if it is exposed to direct sunlight for any length of time. Remember this before sitting your child in the Bobike maxi+.
- If the bicycle is transported on top of or on the back of a moving car, the Bobike maxi+ must be removed. The air turbulence can damage the seat and the mounting, resulting in a hazardous situation.
- Check that your child cannot operate any locks or

other blocking devices present on the bicycle while seated in the Bobike maxi+.

- Never convey several children in a single seat.
- The seat must always be replaced following an accident, even if there is no visible damage. Ask your stockist for information.
- Cover the saddle springs so that your child cannot poke its fingers between them.
- Warning: Do not attach any extra baggage to the Bobike maxi+. Whenever you carry extra baggage, secure it to the other end of the bicycle, so that the weight is evenly distributed. Use the baggage carrier designed for the front of the bicycle.
- Warning: The seat and/or the components must not be modified. To do so will void any claim under guarantee and/or liability.
- Warning: A bicycle seat such as the Bobike maxi+ influences the way you ride on your bicycle. Pay extra attention therefore to steering, balancing and braking.
- Warning: Never leave your child alone in the seat if you leave the bicycle parked against a wall or on its stand. The child could have a nasty fall.
- Warning: If a part of the Bobike maxi+ fails, you should no longer use the seat. Have the part repaired or replaced by your stockist.
- Warning: Always use the safety belt, the foot straps and the wheel contact guard when carrying your child in the Bobike maxi+. Always check whether the safety belt and straps are closed before you set off.

The Bobike maxi+ is approved under European standard 14344.

### **Other Bobike bicycle products are:**

- Bobike mini+ child bicycle seat
- Bobike windscreen
- Bobike foot guards
- Bobike junior
- Bobike clothing – available separately
- Bobike safety belt pads
- Saddle spring protectors

- Jacket protectors
- Handlebar with support bar for the Bobike mini+
- Footrests
- Tyre levers

Bobike is a registered trademark of Dremefa B.V.

For more information and an overview of our products, visit [www.bobike.com](http://www.bobike.com)



Dremefa BV  
P.O. box 18  
6980 AA Doesburg  
The Netherlands  
**T** +31 (0) 313 47 86 30  
**F** +31 (0) 313 47 40 30  
**E** [info@bobike.com](mailto:info@bobike.com)  
**I** [www.bobike.com](http://www.bobike.com)

