

# Keystone<sup>TM</sup>

SINGLEDOR COMPACT  
REFRIGERATOR

user manual

MODEL: KSTRC43BB  
KSTRC43BW

**CAUTION :**

This appliance is not intended for use by persons (including children) with reduced physical, sensory or mental capabilities, or lack of experience and knowledge, unless they have been given supervision or instruction concerning use of the appliance by a person responsible for their safety.

Children should be supervised to ensure that they do not play with the appliance.

If the supply cord is damaged, it must be replaced by the manufacturer, its service agent or similarly qualified persons in order to avoid a hazard.

**General**

This type of refrigerator is widely used in places such as hotels ,offices, student dormitories and houses. It is mostly suitable for refrigerating and preserving foods such as fruits and beverage. It enjoys the advantages of small size, Lightweight, Low electric consumption and easy use.

### Instructions for Installation

1. Do not tilt the refrigerator for more than 45° from upright during moving it. And do not apply force on any part such as condenser and door to prevent the refrigerator from deforming, or else it will influence its performance.
2. Let the refrigerator have enough space to work well.
3. Don't install it in high temperature or humidity place so as to avoid being damaged, dampened and rusted.

### Cautions for Safety

1. Before the refrigerator is plugged in, check if the electric voltage to be used is the same as the rated voltage. The power plug should have its independent socket, adapter may cause the socket to overheat.
2. Don't store inflammable materials such as ether, benzene, LP gas and glue etc in the refrigerator.
3. Don't splash water on the refrigerator, it may cause malfunction or electric shock.
4. When gas leaks from its container. Don't pull the plug out or in. it may cause sparks and fire calamities.

### Instructions for Use

1. When operating the refrigerator for the first time, run it without loading any food until it automatically reaches the desired temperature. Usually it takes 2 or 3 hours, then set the thermostatic dial at the setting desired and put foods in the refrigerator.

- 2.The temperature of the refrigerator can be adjusted by turning the thermostatic dial. A medium setting of the thermostatic dial is the most suitable for general operation.
- 3.Defrost the freezing compartment whenever the layer of frost on the surface of the evaporator reaches 3 or 4 mm. When defrosting remove all food and set the thermostat at “OFF” position. Put the drip tray under the evaporator to collect melted water. After the frost has melted, discard the melted water and dry up the interior of refrigerator. The refrigerator can then be restarted by turning its thermostat to the desired setting.

#### Cautions for Use

- 1.The more foods tuff put in or the more and the longer for once the door is opened, the more it needs electric consumption, which even leads malfunction.
- 2.Better not to place the objects which are too heavy ,pointed or corrosion on table board.
- 3.Re-plugging in the power plug at the interval of over ten minutes.
- 4.Don't store bottled drink in the freezer, so as to prevent from being broken and damaging the refrigerator.
- 5.Open the door as less as possible during power-cut.
- 6.When defrosting, never use any sharp or metallic objects to remove the frost on the surface of the evaporator as it will damage the

evaporator.

7. Don't touch foods and containers in the freezing compartment with your wet hands so as to prevent from being frostbitten.

## Maintenance

1. While cleaning the refrigerator. pull out the electric power plug, rub carefully with a piece of cloth soaked with natural cleanser then wipe with clean water. The abrasive cleaning power, alkali cleansers, chemical cloth, thinner, alcohol, acid petroleum product and hot water are not suitable for cleaning the refrigerator, they may damage the painting cover and plastics.
2. The door gasket is dirty and fogged easily, so clean it frequently.
3. If the refrigerator is out of use for a long time, please pull out the plug, clean and dry the freezing compartment then close the door tightly.

The following cases are not malfunction

1. A flowing water sound:

Flowing water sound will be heard under normal operation.

2. Outside condensation:

Outside condensation is normal in high humidity condition. You may just wipe it up yourself.

3. It takes some times for the temperature of the freezer and refrigerator compartments to become cold after the refrigerator starts to operate: If the temperature of the two compartments is higher while the refrigerator is operating, it takes some times for the temperature of the two compartments to become cold. If the environmental temperature is higher, it takes a long time to make the compartments to become cold.

#### 4.The surface of the compressor becomes hot:

The surface of the compressor may become hot under normal operation. Don't touch it with hands.

#### WARNING

--the appliance is not intended for use by young children or infirm persons without supervision.

--young children should be supervised to ensure that they do not play with the appliance

#### Methods of inspecting malfunction

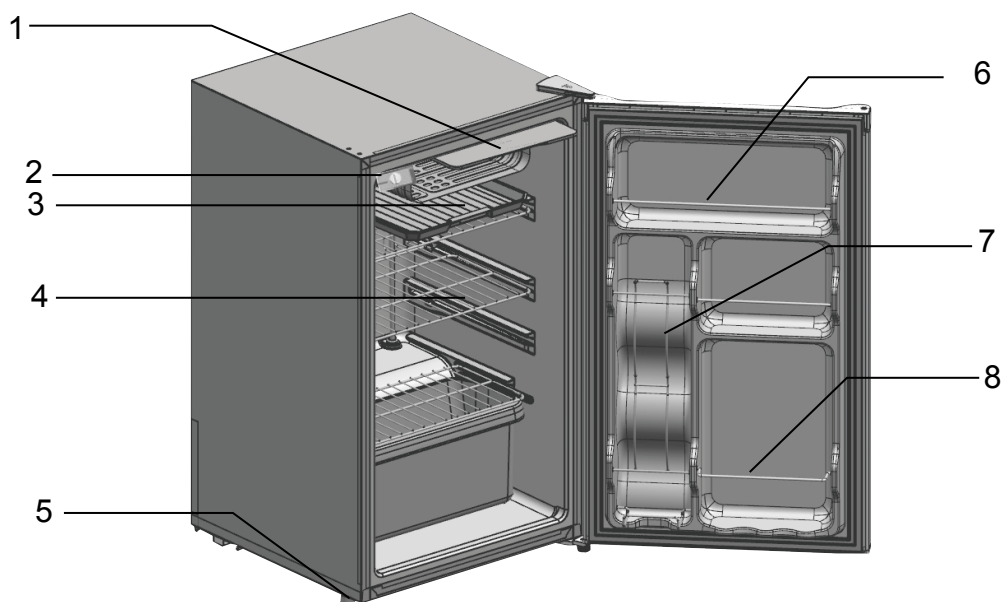
If any case of malfunction happens, please inspect and dispel it according to the methods shown in the following table.

case	Inspection
Not refrigerating	Is there no electric current? Is the voltage normal or not? Has the socket fused? Has the plug been put in effectively?

Not efficient	<p>Is the thermostatic dial set to the correct position?</p> <p>Is there any suitable clearance surrounding the refrigerator?</p> <p>Has the door been opened too frequently or too long?</p> <p>Is the refrigerator exposed to sunlight directly or placed near some heating devices.</p> <p>Are there too much food inside?</p> <p>Or are too hot?</p>
Food frozen in the refrigerator Compartment	<p>Is the thermostatic dial set to the correct position?</p> <p>Have the foods stuff been put too crowded?</p>
Noises	<p>Is the refrigerator installed firmly?</p> <p>Has the refrigerator been struck by some other objects?</p>
Compressor Cannot stop automatically	<p>Are the foods stored too much at one setting?</p> <p>Are the doors opened too frequently or too long?</p>

If the above methods are not yet effective, please contact with the maintenance service department for help without any delay.

Main configuration:



- 1、 Small door
- 2、 Thermostat
- 3、 Pan, drain
- 4、 Steel wire shelf
- 5、 Leveler, leg
- 6、 Wire steel bar
- 7、 Pop can bar
- 8、 Bottle bar



thermostat:

the thermostat knob is used to adjust the compartment's temperature, you can adjust it according to the ambience.

at the same ambience, the number is larger, the compartment's temperature is lower; the number is smaller, the compartment's temperature is higher. the number "0" means off.

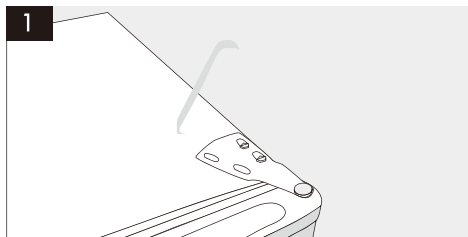
If you feel the compressor is running last too long or the fresh food compartment appear ice block, you may adjust the Thermostat knob to the lower number. if the compartment's temperature is higher or the food can be stored for a long time, you may adjust the knob to the larger number, at the normal, choose the number "3".

The number represent the location of the temperature, does not mean that a specific temperature.

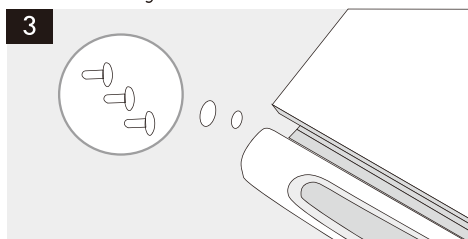
# OPERATING YOUR REFRIGERATOR

## Door Reversal

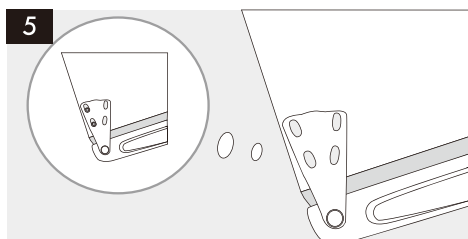
**CAUTION:** To avoid injury to yourself and/or property, we recommend someone assist you during the door reversal process.



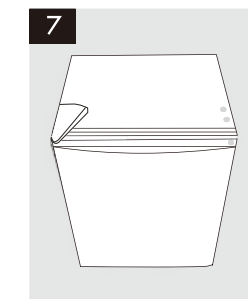
Using a flat blade screwdriver, remove the plastic hinge cover from the top of the door. Be careful not to scratch refrigerator surface.



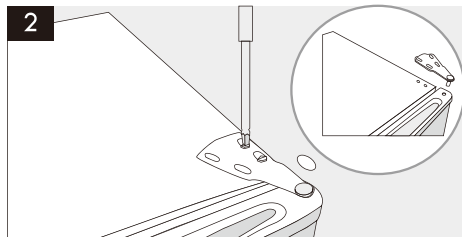
Using a thin-bladed tool, carefully pry up and remove hole plugs from top of door and the top of the opposite side of the cabinet; Insert plugs into provided hole on opposite side of door and into holes exposed by removal of top hinge bracket.



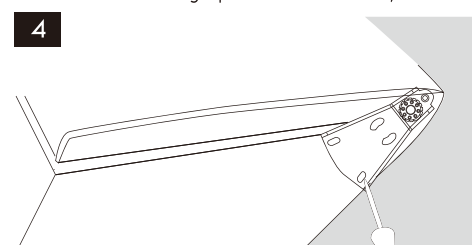
Insert top bracket hinge pin into hole in top of door. Use the two previously removed screws to attach back of top bracket to cabinet. Be sure to align the paper gasket beneath the two attachment holes in bracket.



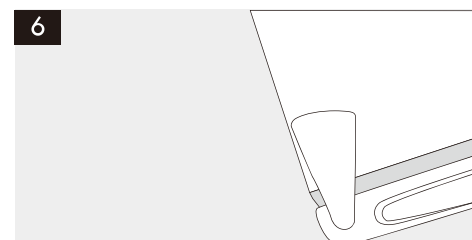
Check that the door is aligned horizontally and vertically and that the seals are closed on all sides before finally tightening the top hinge. Readjust the leveling foot. Turn clockwise to lower and counterclockwise to raise the level.



Using a slotted screwdriver, unscrew the two screws from the top hinge bracket. Remove the bracket and underlying paper gasket. Lift and remove the door from the bottom hinge pin. Set door safely aside.



Using a slotted screwdriver, remove the two screws attaching the bottom hinge bracket to the refrigerator cabinet. Unscrew the foot from the other side of cabinet. Avoid tilting the refrigerator 45 degrees when removing bottom bracket and foot. Attach bracket and foot to opposite sides from which removed.



Replace the plastic hinge cover over the top hinge bracket.

For household refrigerating appliances, information shall be provided in the instruction booklet provided by manufacturers concerning:

- the combination of drawers, baskets and shelves that result in the most efficient use of energy for the appliance, and
- how to minimise the energy consumption of the household refrigerating appliance in the use-phase.