

RESTWELL RISE & RECLINE ARMCHAIRS

OWNER'S HANDBOOK

CONTENTS

1. Introduction
2. Parts Description
3. Personal Safety
4. Installation Instructions
5. Backrest Removal
6. Operating Instructions and Guidelines
7. Care and Maintenance
8. Specification
9. Fair Wear and Tear Policy
10. Warranty
11. Frequently Asked Questions

INTRODUCTION

The Restwell range of lift, rest and recline armchairs are designed to be both comfortable and stylish. They are assistive technology devices and feature a distinct raise function to help users lower in to the chair and then raise them to their feet.

This armchair is available in a variety of colours to suit most décor, and is available as a single motor chair with three-way mechanism, or a dual motor chair with fully independent mechanism.

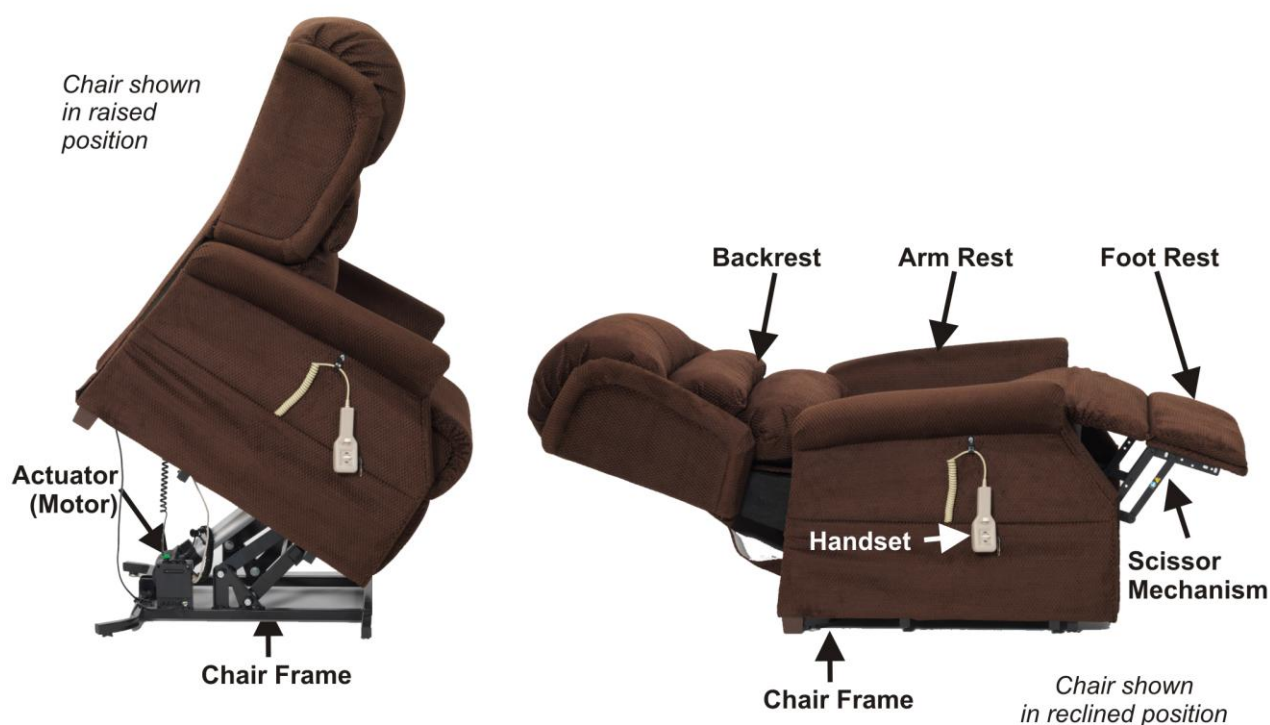
The single motor chair features a two-button handset and the dual motor chair has a six-button handset. Both models require approximately 24" (60cm) space behind the chair to allow for the backrest reclining. The chair is designed for a single user with a weight limit of up to 170kg, and is designed solely for use by a disabled person.

Restwell is a brand of Drive Medical. Drive Medical is an ISO 9001:2000 certified company. For more details about our products please see your local dealer. To find your local dealer please visit www.drivemedical.co.uk

Drive Medical Ltd,
Ainley's Industrial Estate,
Elland, United Kingdom HX5 9JP
Web: www.drivemedical.co.uk



PARTS DESCRIPTION



PERSONAL SAFETY

Please follow the safety guidelines below to ensure that you get the best from your armchair for many years to come. Failure to follow these guidelines could result in injury or damage:

- **Just one at a time.** *Ensure that only one person uses the armchair at a time.*
- **Footrests are for feet.** *Ensure that nobody sits or puts their entire body weight on the elevated footrest as this could result in injury and/or damage*
- **Watch for walls.** *Ensure that the armchair is out of range from walls and furniture when operating to avoid damage to upholstery and décor.*
- **Stop Child.** *Ensure that all children and pets are supervised when around the armchair. Do not allow children to use the handset, and that all visitors are aware of the potential trapping danger from mechanisms.*
- **Take your key.** *The handset comes with a key jack. It is recommended that you remove the key when you are not using the armchair to prevent anybody else using the armchair and becoming trapped.*
- **Be careful of the scissor mechanism.** *The elevating leg rest uses a scissor mechanism. Please ensure that no body parts or clothing, blankets, etc are caught in the scissor mechanism when operating.*
- **Practice makes perfect.** *In certain circumstances or with some medical conditions the user needs to practice using the rise recline armchair in the presence of a trained attendant. A trained attendant may be a care professional or a family member who has been trained in assisting a rise recline armchair user with daily activities.*
- **Weight Limit.** *The user weight limit on the chair is 170kg (27 stone). Do not exceed the weight limit.*
- **Battery backup.** *Ensure that the battery backup is replaced very year or when the battery backup is used in the event of a power cut. See the section on Installation Instructions about inserting backup batteries.*
- **Electrical systems.** *Periodically visually inspect the handset and power cord for signs of wear, chafing*

or cracks. Also, ensure that no liquid or food is ingressed in to the electrical systems. Failure to do so may affect the performance of the armchair.

- **Call for assistance.** *It is recommended that some users have a telephone to hand when using the rise recline armchair. If this is in case they experience difficulty and need to call for help. Please note do not use a mobile telephone whilst operating the armchair. It is recommended that you pull out the handset key before using a mobile telephone. Failure to do so could cause damage to the electrical systems.*
- **Carelessness causes fire.** *Although the foam and fabric used on the armchair are fire retardant to legally specified levels, caution should be taken to avoid fire. Please ensure that all cigarettes and matches are properly extinguished. Also, be careful of other fire hazards such as electric and gas fires, etc nearby.*
- **Use the Lowering Function.** *Do not drop in to the chair seat as this can reduce the longevity of the chair. Instead, the chair should be raised and the user should position themselves in the chair then lower the chair and user together.*
- **Use the Raising Function.** *Use the raising function prior to exiting the chair as this will aid your exit from the chair. Do not grab on to the arms or other parts of the chair when exiting as this can cause damage.*
- **Modifications.** *The chair has not been designed for user modification. Any modifications could result in injury and/or damage and may invalidate the warranty on the chair.*
- **Electromagnetic Interference (EMI).** *Be aware that mobile phones, two-way radios, laptops and other wireless devices may cause unintended movement. Use caution when operating your chair around these devices. Your chair may also cause interference to other devices such as alarms located nearby.
The use of components may increase the susceptibility of the chair to EMI. For more information please visit www.drivemedical.co.uk*
- **Explanation of Symbols.** *See overleaf*

Explanation of Symbols



Beware of crushing and/or pinch point(s)



Electrical Hazard



Read User Manual Fully Before Use



Maximum User Weight



Do Not Use an AC Invertor or Charger



Beware of Obstacles Behind When Lowering the Chair



Beware of Obstacles, Animals or People Underneath the Legrest When Lowering the Leg Rest



Take Caution Not to Trap Cables in the Chair Mechanism



Recycle as Electrical Waste
Contact your Dealer for details of the local WEEE scheme



Beware of Electromagnetic Interference



Battery Compartment Cover

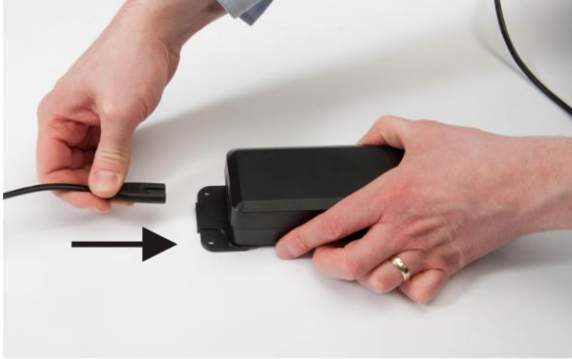


Only For Internal Use

INSTALLATION INSTRUCTIONS

Chair Installation – Single Motor Chairs

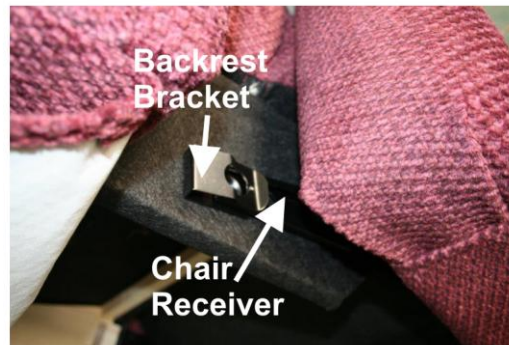
The Instructions below are only applicable to the single motor Chair models:



1. Insert the mains lead in to the end of the power supply.



2. Insert the 2-pin cable from the chair in to the opposite end of the power supply.



3. Position the backrest so its brackets sit on the receiver slot on both sides of the chair.

Push down on both sides of the chair until an audible click is heard.

Check both sides of the backrest are secured in place.

4. If required, install the backup batteries (please see later section)

Chair Installation – Dual Motor Chairs



1. Insert the mains lead in to the end of the power supply.



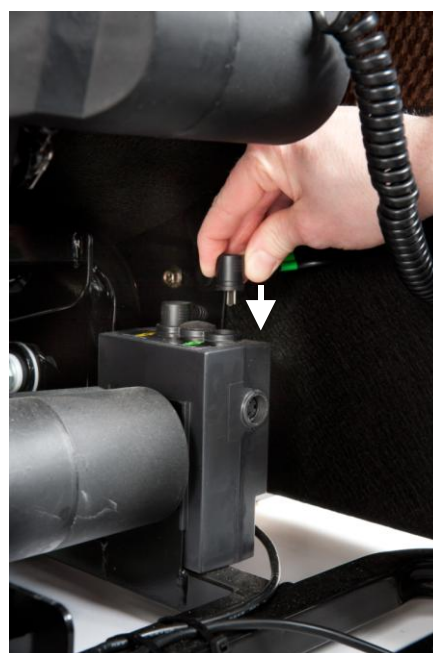
2. Insert the 2-pin cable from the chair in to the opposite end of the power supply.



3. Attach the backrest to the chair by placing the backrest brackets on the chair receivers.

Then push down on the backrest until you here an audible click.

Check the backrest is securely attached to the chair base.



4. Insert the connector from the backrest actuator in to the port on the control box.



5. Use the fabric flap on the back of the backrest to cover the chair mechanism, as shown in the photo left.

Battery Back Up Installation

Applicable to both single and dual motor chairs.

As a backup the chair has a battery operated reset function, which will return the chair to its normal position in the event of power loss.

It is not essential that this function is used, and the function can be bypassed by simply not installing the batteries. The function requires two 9V PP3 batteries (not supplied). Ensure that the battery backup is replaced every year or when the battery backup is used in the event of a power cut. The installation instructions are below:



1. Slide the battery compartment cover up to remove it from the power supply.



2. Pull out the two connector leads from the power supply. Insert two 9V batteries in to the void in the power supply, ensuring the battery connectors on top of the battery are exposed.



3. Push the two connector leads on to the connectors on the batteries.



4. Replace the battery compartment cover.

Leg Levelers

The legs on the chair can be adjusted to make the chair more stable and to stop the chair from rocking.

Turn the chrome legs (as shown right) to move the legs up or down.

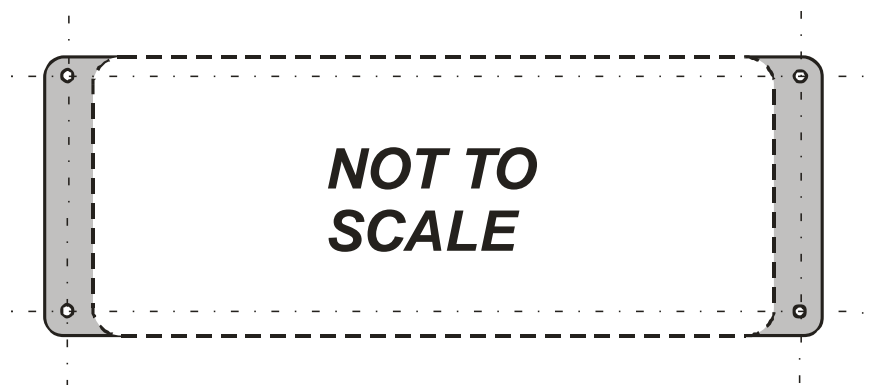


Power Supply Positioning

The power supply should be placed in an environment which is well ventilated and free of heat sources.

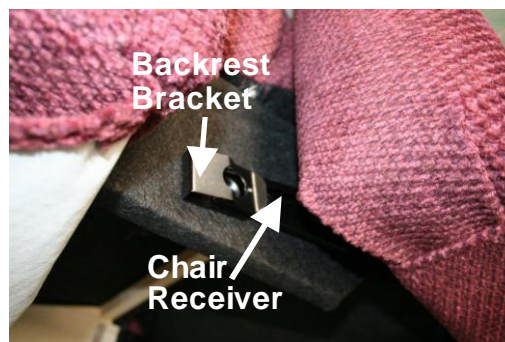
It can either be placed on the floor or permanently mounted on to a wall. If this is the case, the wall mounting should only be done by a competent person and will suitable fasteners for the wall and power supply.

The power supply should only be mounted using the four corner holes on the two brackets at both ends of the power supply (as shown below).



BACKREST REMOVAL

To Remove the Backrest on the Single Motor Chair



3. Position the backrest so its brackets sit on the receiver slot on both sides of the chair.

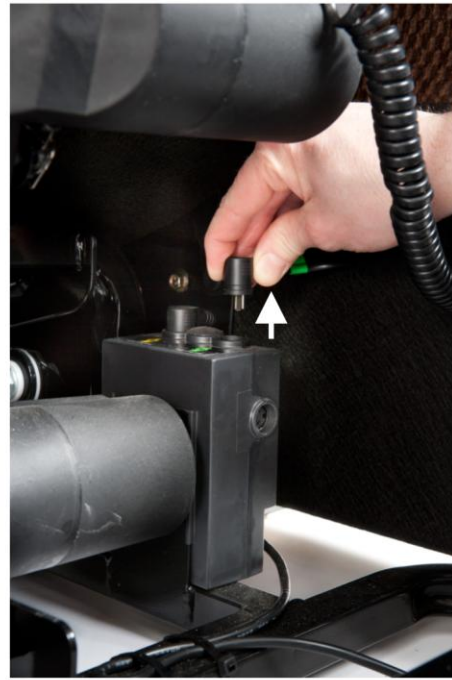
Push down on both sides of the chair until an audible click is heard.

Check both sides of the backrest are secured in place.

To Remove the Backrest on the Dual Motor Chair



1. Return the chair to a normal position with the legrest lowered and backrest raised. Lift up the fabric flap at the back of the chair to expose the mechanism.



2. Switch off the chair at the mains and unplug.

Pull out the connector for backrest actuator motor.

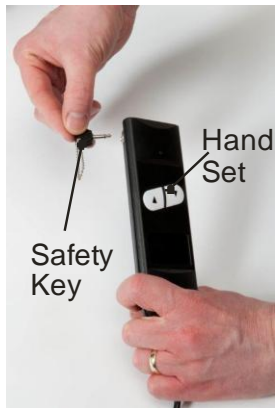


3. Pull on the backrest whilst pulling out the locking tab (arrowed) with your finger or a flat end screwdriver. This will release the backrest and allow removal.

Repeat for the other side

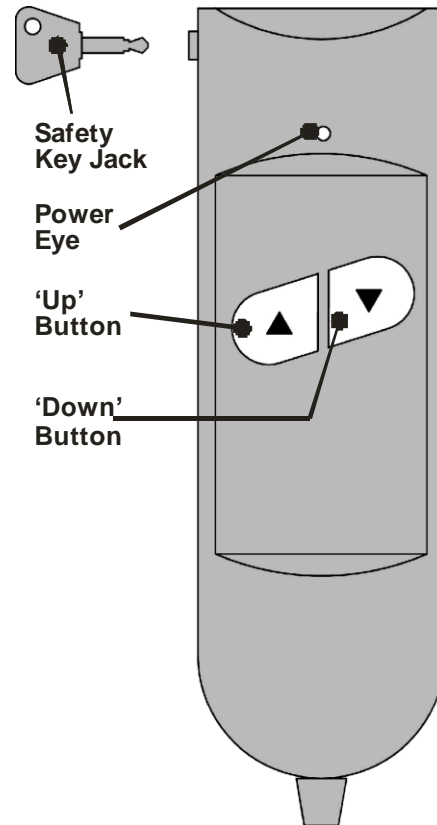
OPERATING INSTRUCTIONS

Single Motor Chair Handset



Before operating the handset, consult the safety precaution section of this handbook.

To allow the handset to operate, insert the safety key in to the side of the handset (as shown left).



Press the 'UP' button to operate the raise function of the chair. This will bring the backrest back upright and lower the legrest until the chair is in a normal position, and then finally raise the chair to allow easy access for the user.

Press the 'DOWN' button to operate the lowering function of the chair. This will lower the chair from a raised to a normal position. It will then recline the backrest and elevate the legrest. Once a comfortable position is reached, release the button to stop the mechanism.

Dual Motor Chair Handset



Before operating the handset, consult the safety precaution section of this handbook.

To allow the handset to operate, insert the safety key in to the side of the handset (as shown left).

Press the **“Recline Backrest Button”** to recline the backrest.

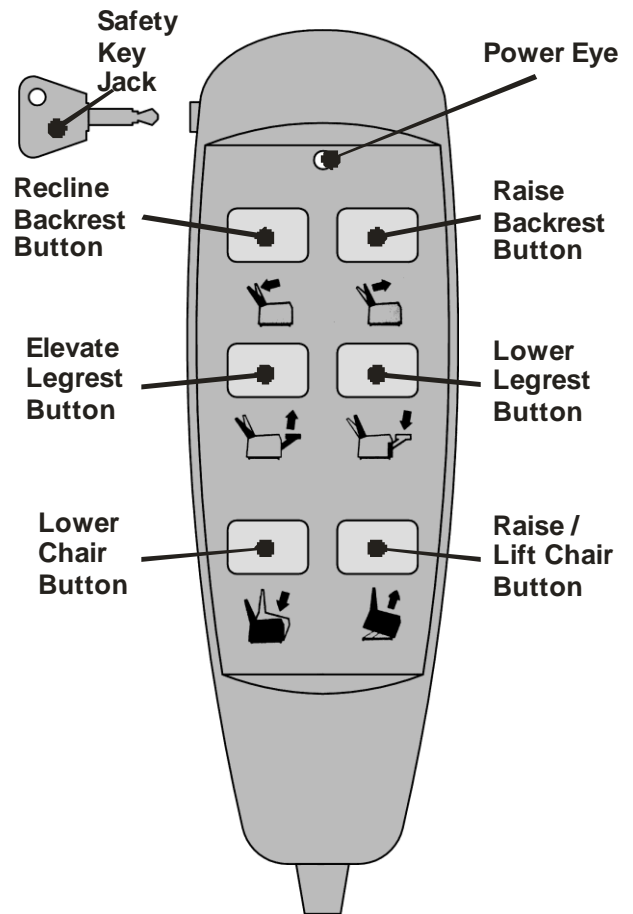
Press the **“Raise Backrest Button”** to raise the backrest.

Press the **“Elevate Legrest Button”** to raise and elevate the legrest.

Press the **“Lower Legrest Button”** to lower the legrest

Press the **“Lower Chair Button”** to lower the chair from the raised position to the normal position.

Press the **“Raise / Lift Chair Button”** to raise the chair from the normal position to the raised position.



CARE AND MAINTENANCE

- **Checks.** Periodically inspect the fabric for any signs of wear or damage such as pulls, tears or gaps. Inspect the cord and hand control for cracks, wear, holes and loose wires. In the event of any issues found, contact your dealer.
- **Battery backup.** The Restwell range of armchairs has a battery backup system which is designed for emergency use in the event of a power failure. The battery should be replaced annually or after a power failure. The backup system has very limited power so should only be used in the event of a power failure or emergency to bring the chair to its normal position. The backup system requires two 9V PP3 batteries.
- **Electronics Care.** Keep the electronics away from moisture and extreme temperatures, and avoid contact with water. Regularly inspect all cables and connections to make sure they are not frayed, chafed or damaged.
- **Servicing.** Restwell rise recline armchairs should be serviced annually, if the armchair is used in a single user environment. Armchairs which are used in a multi-user environment (for example in communal accommodation) may have to be serviced more frequently. Servicing should be completed by competent personnel such as a Drive Medical dealer or a service contractor. Contact your Drive Medical retailer for a servicing schedule.

The estimated service life of the armchairs is 6 years in a single user environment. The armchair should be operated and maintained in accordance with manufacturers guidelines otherwise service life could be reduced.

- **Cleaning the Upholstery.** A vacuum cleaner, dusting cloth or similar may be used regularly to remove everyday dust and grime. A damp cloth and mild detergent or upholstery shampoo may be used for spot cleaning. Alcohol based and abrasive solvents and disinfectants should not be used. Should the chair require more vigorous cleaning, then a professional upholstery cleaner is recommended.

SPECIFICATION

Chair Model	Chair dimensions (in cm / in)			Seat dimensions (in cm / in)			Weight Limit	Battery Backup
	Depth	Width	Height	Depth	Width	Height		
Single Motor	79cm (31")	79cm (31")	109cm (43")	48cm (19")	53cm (21")	50cm (20")	170kg	YES
Dual Motor	86cm (34")	77cm (30¼")	113cm (44½")	53cm (21")	50cm (20")	50cm (20")	170kg	YES

- All the above dimensions are for the armchairs in their normal chair position, and have a tolerance of +/- 2.5cm / 1"
- All Restwell rise & recline armchairs are CE marked and meet the relevant British Fire Retardancy Standards
- If the chair is upholstered in leather, the chair is leather faced (i.e. the parts which contact the user, for example seat face, back face, armrest) with other parts upholstered in matching PVC.
- All rise & recline armchairs have a serial number label on them, which is located on the armchair frame.

FAIR WEAR AND TEAR POLICY

Your new armchair is covered by the warranty below. Please note however this Warranty does not include:

- *Damage from misuse, and use over the specified weight limited.*
- *Material fading over time of through sunlight.*
- *Damage from spills or leaks.*
- *Collision damage (rubbing against wall, etc)*
- *Accidental tear and damage.*
- *Damage arising from misuse (e.g. people sitting on an elevated footrest, etc)*

WARRANTY

Your Restwell Rise and Recline armchair is covered by a two-year warranty from date of delivery. Drive Medical will supply replacements for any parts which have failed as a result of manufacturing, design or material defect. Contact the retailer from you purchased the chair in the event of you needing to make a claim.

Failures as a result of accidental damage, misuse, modification or wear and tear are not covered by this warranty.

Contact the stockist from whom you purchased the chair to apply the warranty.

For full warranty conditions, contact your Drive Medical stockist or visit www.drivemedical.co.uk

This does not affect your statutory rights.

FREQUENTLY ASKED QUESTIONS

Symptom	Possible Solutions
The chair will not operate	<ul style="list-style-type: none">• Ensure the chair is plugged in to the mains socket and it is switched on.• Check the safety key is inserted in to the key jack.• Ensure all connections on the chair are plugged in correctly.
The chair will only operate in one direction	<ul style="list-style-type: none">• Check the buttons on the handset are not stuck.• Check the button is functioning with an audible click.
The chair stops during a lifting cycle	<ul style="list-style-type: none">• The chair has a thermal cut out installed which will trigger if the chair is overloaded. The cut-out will automatically reset after 10 minutes. Try the chair again after 10 minutes.• There has been a power cut and there are no batteries in the battery backup (or the batteries have run out)
The chair is rocking or appears unstable	<ul style="list-style-type: none">• Ensure all four corners of the metal frame are touching the ground. Adjust the position of the leg(s) on each corner if required

If the above remedies do not correct the fault contact the Drive Medical dealer from whom you purchased the chair.