

SHT-3305XM



This marking shown on the product or its literature, indicates that it should not be disposed with other household wastes at the end of its working life. To prevent possible harm to the environment or human health from uncontrolled waste disposal, please separate this from other types of wastes and recycle it responsibly to promote the sustainable reuse of material resources.

Household users should contact either the retailer where they purchased this product, or their local government office, for details of where and how they can take this item for environmentally safe recycling.

Business users should contact their supplier and check the terms and conditions of the purchase contract. This product should not be mixed with other commercial wastes for disposal.

## Preface

### Precautions

- Safety Precautions ..... 2

## Chapter 1 : Preparation

### Names and Functions

- Product - Household unit ..... 4
- Interphone (SHT-IPE200/EN-Optional) ..... 5

## Chapter 2 : Operation

### Entrance Functions

- When a visitor is outside the entrance ..... 6
- Checking outdoor status ..... 7

### Interphone Functions (Optional)

- Making internal calls ..... 8

### User Setting Functions

- Entering for user setting mode ..... 10
- Setting the melody type ..... 10
- Adjusting voice volume/screen ..... 11
- Setting the time ..... 11
- Deleting all stored images ..... 12
- System initialization ..... 12

### Supervisor setting Functions

- Entering for supervisor setting mode ..... 13
- Setting the ID ..... 13
- Setting the Camera Quantity ..... 14
- Setting the Bell ..... 14
- Setting the Multi-looby phone ..... 15
- Setting the Door Open ..... 15
- Setting the Open Time ..... 16
- Setting the Call Time ..... 16
- Setting the Talk Time ..... 17
- Setting the NAND Flash Bulk Check ..... 17
- Setting the Video mode ..... 18
- Initializing the Supervisor mode ..... 18
- Setting the Chroma Delay ..... 19
- Setting the Strobe Image Number ..... 19

### Visitor Image Functions

- Auto-recording of missed visitor images ..... 20
- Auto-recording of door camera stolen ..... 20
- Recording visitor images manually ..... 20
- Replaying stored images ..... 21
- Deleting the current image ..... 21

## Chapter 3 : Installation

### Installation

- Household unit/Interphone ..... 22
- Door Camera ..... 23

### Wiring

- 3Household+2Door phones (Door locks) ..... 24
- 3Interphones+2Door phones (Door locks) ..... 26
- 1 Household + 2 Interphones + 1 Door phone (Door lock) + 1 multi-lobby phone ..... 28
- 1 Door lock + 1 Doorbell ..... 28

### Settings

- Connection cable specifications ..... 29
- Various settings ..... 29

## Chapter 4 : Useful Information

### Components

- Household unit [SHT-3305 Series] ..... 30
- Interphone [SHT-IPE200/EN] ..... 30
- Door Camera [SHT-CP601/EN, SHT-CP611/EN, SHT-CP611E/EN] ..... 30

### Troubleshooting

- Check this first! ..... 31

### Product Specifications

- Household unit [SHT-3305 Series] ..... 32
- Interphone [SHT-IPE200/EN] ..... 32
- Door Camera [SHT-CP601/EN, SHT-CP611/EN, SHT-CP611E/EN] ..... 33

### Memo ..... 34

### Product Warranty ..... 35

\* Please review the content below to ensure safe and precise product usage.

## Safety Precautions

### Warning

Neglect to follow directions can result in death or serious injury.

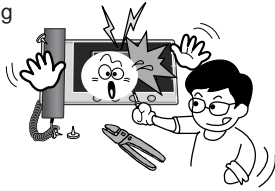
### Caution

Neglect to follow directions can result in injury or material loss.

### Warning

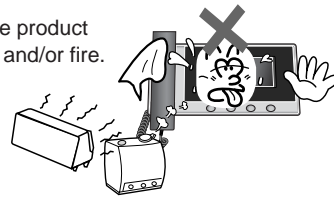
Do not disassemble, install, or repair this product on your own accord.

- Contact the service center for any repair needs. Unauthorized handling may cause product malfunction, electric shock, and/or fire.



Do not place the product near a heat source (e.g. heater) or source of moisture (e.g. aquarium, humidifier).

- It may cause product malfunction and/or fire.



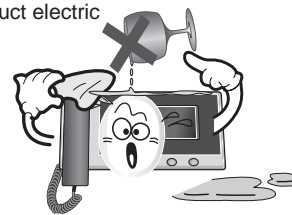
Do not subject the product to any heavy shock such as striking with a hard object (e.g. hammer, etc.).

- It may cause product malfunction, electric shock, and/or fire.



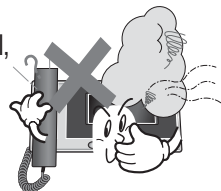
Do not allow water or other liquid to enter the product interior.

- It may cause product electric shock and/or fire.



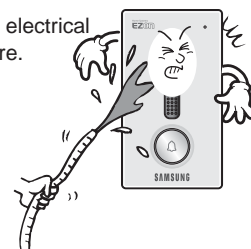
If the product emits a peculiar noise, odor, and/or smoke, immediately lower the circuit breaker connected to the electric heater switch (ONT product connection) in the power cabinet panel, and then contact the service center.

- Beware the risk of electric shock and/or fire.



Do not allow water to enter the camera interior when cleaning.

- It may result in electrical shock and/or fire.



### Warning

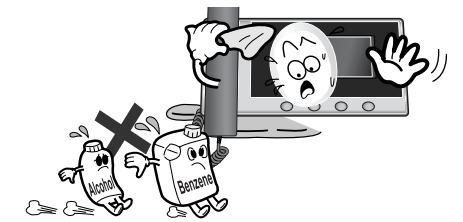
Do not use pins or any sharp, pointy objects to press buttons or to insert into holes.

- It may cause product electric shock and/or fire.



Do not clean using wet cloths or volatile substances (e.g. alcohol, benzene, thinner).

- It may cause product electric shock and/or fire.



※ After receiving service, ask the service representative to perform a safety inspection.

### Caution

Do not hang from or pull on the installed product.

- Take special care to prevent such abuse by small children as injury may occur.



Be careful when standing up after sitting under the installed product.

- Head injuries may occur from any impact with the installed product.

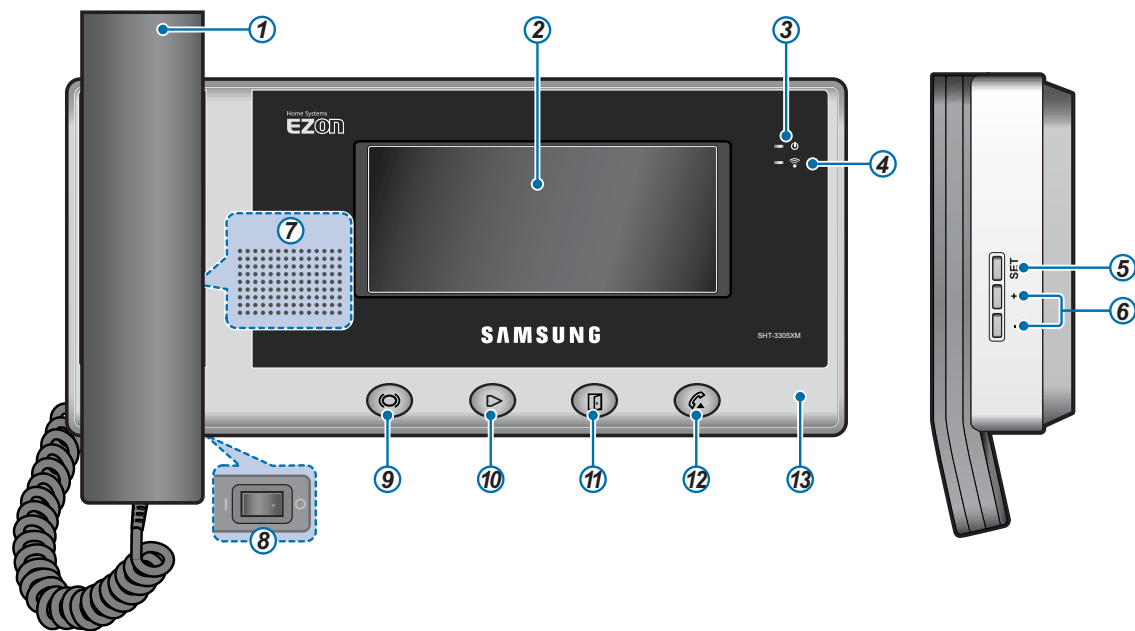


Make sure to pass the user manual onto the new home owner/tenant when moving.

- It can prevent any product misuse by the new home owner/tenant.

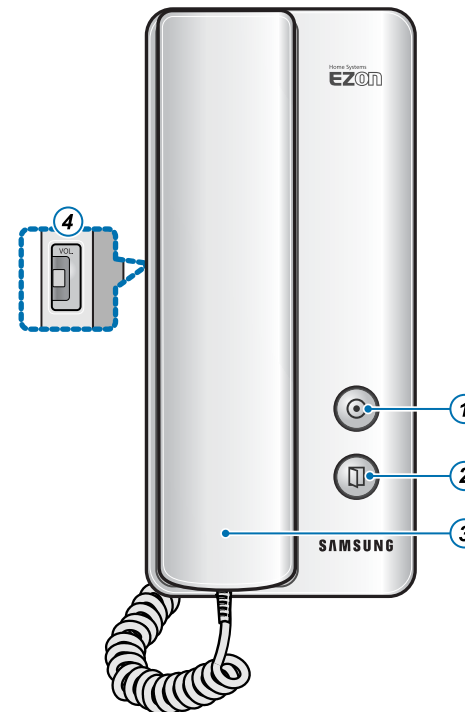


## Product - Household unit



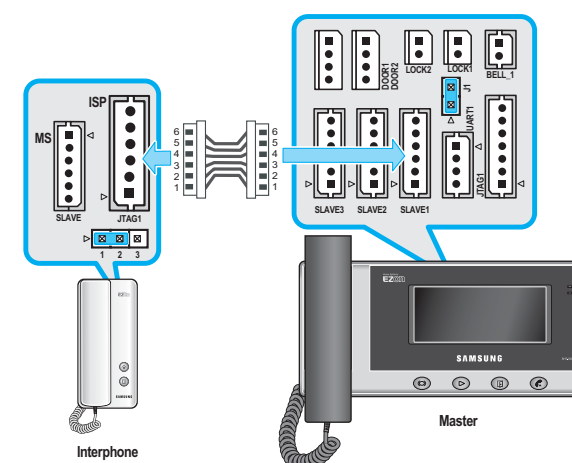
- ① **Handset**  
This is used to communicate with a visitor outside the entrance or the common entrance or make calls to the interphone.
- ② **LCD screen**  
This shows the visitor's image.
- ③ **POWER indicator**  
This lamp turns red when the power is normal and blinks in communication failure.
- ④ **DOOR indicator**  
When doorbell is connected, this lamp blinks if the bell rings.
- ⑤ **SET button**  
This button is used to change various settings (e.g. Bell sound, call volume, screen brightness, initialization, etc.)
- ⑥ **+/- button**  
This is used to adjust bell sound, call volume and screen brightness.
- ⑦ **Speaker**  
This is used to output bell sound or voice during communication with a visitor outside the entrance (doorbell)/common entrance or when making a call to the interphone.
- ⑧ **Power switch**  
This is used to turn the power on/off.
- ⑨ **Interphone button**  
This is used to make calls to the interphone.
- ⑩ **Record/Replay button**  
This is used to store images on the screen or play stored images.
- ⑪ **Door Open[release] button**  
This is used to open the entrance/common entrance during a call.
- ⑫ **Call button**  
This is used to check the status outside the entrance, answer an incoming call with the handset picked up or to make a speakerphone call.
- ⑬ **Microphone**  
This is used to make a call with a visitor outside the entrance/common entrance or to the interphone.

## Interphone (SHT-IPE200/EN: Optional)



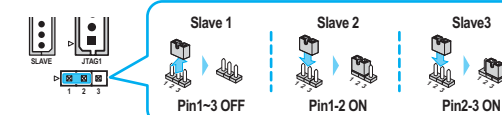
- ① **Call button**  
This is used to call the household unit from the interphone or answer an incoming call with the handset picked up.
- ② **Open button with LED lamp**  
This is used to open the door with an incoming call from the entrance lobby or during a call with a visitor at the entrance lobby.  
**[Indication of LED lamp]**
  - RED blinking : before ID setting
  - RED light : complete ID setting
  - GREEN blinking : incoming/out going a call
  - GREEN light : during a call
- ③ **Handset**  
This is used to make a call.
- ④ **Bell Adjuster**  
This is used to adjust bell volume. It can adjust both call volume and melody volume.

### Note



### Initial Setting for Interphone ID

1. Insert or remove the jumper on the bottom of SHT-IPE200/EN for desired Interphone ID setting as below;



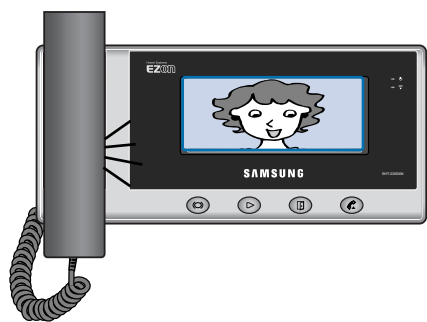
2. Connect to SLAVE1~3 port on the SHT-3305's bottom and SHT-IPE200/EN's bottom by using ext. harness (6 pins). OPEN LED lamp will start blinking a few seconds, then lighted when Slave ID is set to correctly. If OPEN LED is blink continually, recheck each jumpers of SHT-IPE200/EN.

# Entrance Functions

These functions enable user to make a call to a visitor outside the entrance or open the entrance door.

## ▶ When a visitor is outside the entrance

**1** Bell rings and the screen displays the image of the visitor outside the entrance.



- If an interphone is connected, the incoming bell rings from the interphone.

- Each time the doorbell rings, the **Call** LED blinks.

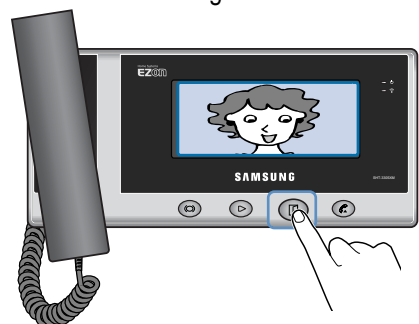
If you want to make a call to the visitor, pick up the handset and make a call.



- For interphone call (option), pick up the interphone and make a call.

- The limits for a call time and talk time are 1 minute and 3 minutes, respectively. If a call is not made within the a call time limit, the visitor's image is recorded/stored automatically.

**2** You can open the entrance door by pressing the **Door Open** button during a call.



- For interphone (option), you can open the entrance door by pressing the **Door Open** button during a call.

- If the current call is switched to speakerphone mode by pressing the **Call** button in handset mode, you can continue the call in speakerphone mode after replacing the handset.

**Note**

1. Installing the door lock system designated by our company to your entrance door enables you to open the door by pressing the **Door Open** button during an entrance call.
2. You can adjust voice volume, color, contrast or brightness with + or - button referring to the text under the screen after pressing the **SET** button.
3. When doorbell rings, you can open the relevant door by pressing the **Door Open** button with no call connection.

# Entrance Functions

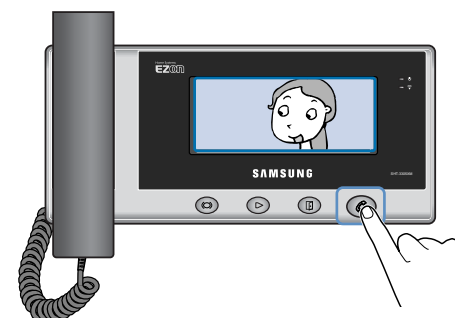
These functions enable you to check the status outside the entrance.

## ▶ Checking outdoor status

When there is one door pin

If you press the **Call** button in standby mode, the entrance image is displayed on the screen and a call is connected.

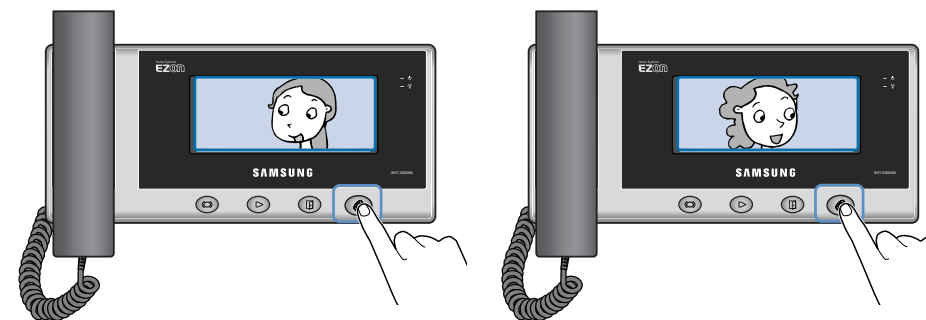
- If you press the **Call** button with the handset picked up, the phone is connected in handset mode.
- If you press the **Call** button in standby mode, the phone is connected in speakerphone mode.



- The outdoor image can be displayed for up to one minute.
- You can open the entrance door by pressing the **Door Open** button while the outdoor image is displayed.

When there are two or more door pins

If you repeatedly press the **Call** button, the entrance hall images are displayed in turn.



- The outdoor image screen is automatically turned off after 50 ~ 60 seconds.
- Doorbells and multi-lobby phones do not support "Checking outdoor status."
- You can open the entrance door by pressing the **Door Open** button while the outdoor image is displayed.

# Interphone Functions (Optional)

These functions enable you to make internal calls when another monitor or an interphone is installed.

## ▶ Making internal calls


When calling the interphone from the household unit

**1** Press the **Interphone** button with the handset picked up.

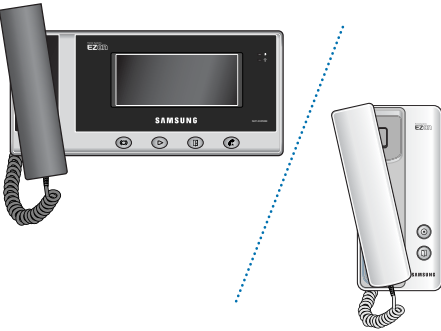


- An incoming bell signal occurs in another monitor or the interphone.

**2** A melody sounds from sub-phone (another SHT-3305) or the interphone.



**3** Now, you can accept the call with the handset of the interphone.




- If the current call is switched to speakerphone mode by pressing the **Call** button in handset mode, you can continue the call in speakerphone mode after replacing the handset.

**Note**

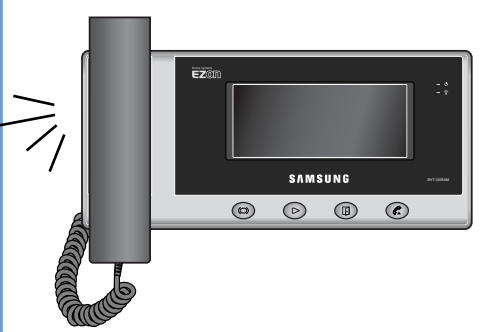
1. If internal calls are not answered for one minute, the calls are disconnected.
2. Internal calls are automatically hung up after 3 minutes.

When calling the household unit from the interphone

**1** Press the **Call** button with the handset of the interphone picked up.

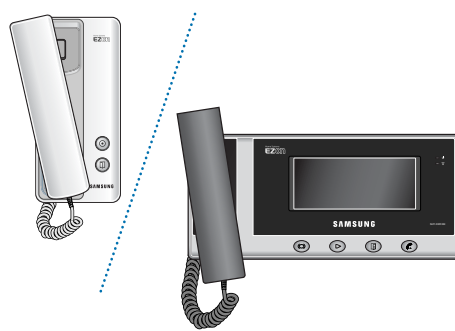


**2** An interphone call melody sounds from the household unit.



- An incoming bell signal occurs in the interphone.

**3** Now, you can accept the call with the handset of the household unit.



- If the current call is switched to speakerphone mode by pressing the **Call** button in handset mode, you can continue the call in speakerphone mode after replacing the handset.

**Note**

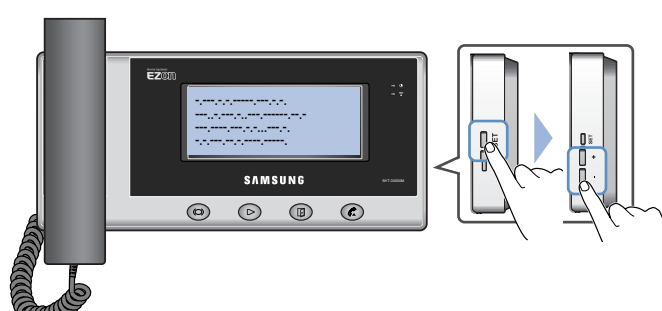
1. If internal calls are not answered for one minute, the calls are disconnected.
2. Internal calls are automatically hung up after 3 minutes.

# User Setting Functions

These functions are used to customize some product functions in the user's environment.

## ▶ Entering for user setting mode

**7** Select a desired setting mode by repeated pressing the **SET** button in standby mode. Press +/- button to enter the selected mode.



< USER MODE >	
1. DOOR1 MELODY SELECT	1
2. DOOR2 MELODY SELECT	2
3. SLAVE MELODY SELECT	3
4. MELODY VOLUME ADJUST	2
5. ALL IMAGE DELETE	NO
6. FACTORY DEFAULT	NO
7. VIDEO MODE OSD COLOR	RED
8. RTC YEAR ADJUST	2009
9. RTC MONTH ADJUST	01
A. RTC DATE ADJUST	02
B. RTC HOUR ADJUST	03
C. RTC MIN ADJUST	04
D. EXIT	

Ver1.0

These functions enable you to make internal calls when another monitor or an interphone is installed.

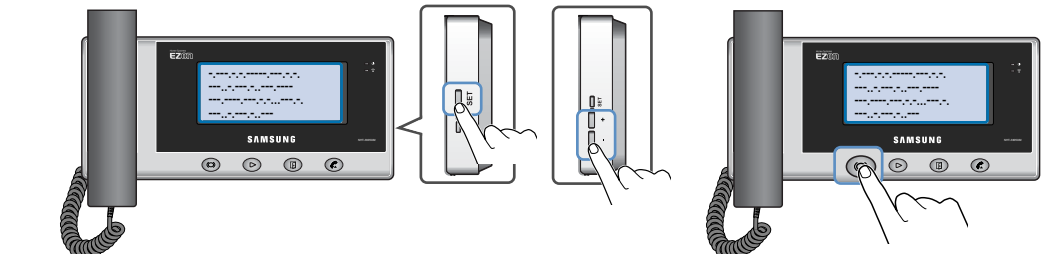
- To exit the user setting mode, select **D.EXIT**, and then press the **Interphone** button to save your settings. In addition, if there is no input for more than 10 seconds, the mode is automatically ended.

## ▶ Setting the melody type

Set/select melodies for Door 1, Door 2 (Lobby) and/or Slave (Interphone).

1. During the standby mode, press the **SET** button repeatedly to select the desired melody selection item. **(1.DOOR1 MELODY SELECT ~ 3.SLAVE MELODY SELECT)**
2. Press the +/- buttons to select the desired melody type as below;
 

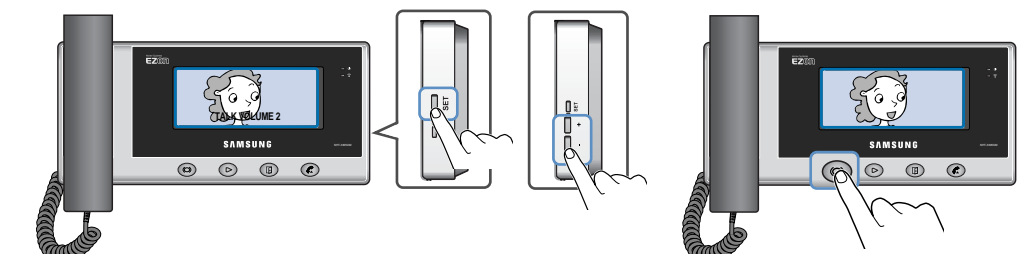
1. Ding-dong 1	2. Ding-dong 2	3. Ding-dong 3	4. Guitar bell 1
5. Guitar bell 2	6. Love's greeting	7. Tambourine	8. Canon (Pachelbel)
3. To save the selected settings, press the **Interphone** button.



- Melodies can be repeatedly selected for each bell sound of Door 1, Door 2 (Lobby) and Slave (Interphone).
- To exit the user setting mode, select **D.EXIT**, and then press the **Interphone** button to save your settings. In addition, if there is no input for more than 10 seconds, the mode is automatically ended.

## ▶ Adjusting the voice volume/screen

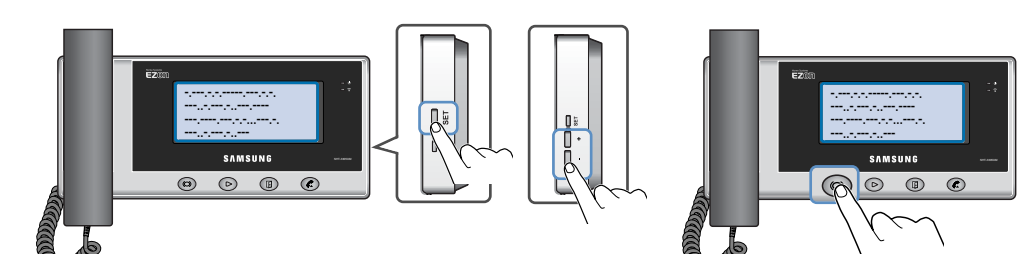
1. While an image is displayed on the screen, press the **SET** button repeatedly to select the desired adjustment mode as below;  
**TALK VOLUME 2 → COLOR STEP 2 → CONTRAST STEP 2 → BRIGHT STEP 2 → EXIT.**
2. Press the +/- buttons to select the desired value.
  - + : Increase the setting value
  - : Decrease the setting value
  - Each setting can be set up to level 4, and the initial setting value is 2.
3. To save the selected settings, press the **Interphone** button.



- To exit the user setting mode, select **EXIT**, and then press the **Interphone** button to save your settings. In addition, if there is no input for more than 10 seconds, the mode is automatically ended.

## ▶ Setting the time

1. During the standby mode, press the **SET** button repeatedly to select **8.RTC YEAR ADJUST ~ C.RTC MIN ADJUST.**
2. Press the +/- or **SET** buttons to adjust the desired time.
  - + : Increase the setting value
  - : Decrease the setting value
  - SET:** Move to the specified item. (Move to YEAR → MONTH → DAY → HOUR → MIN in turn.)
3. To save the selected settings, press the **Interphone** button.



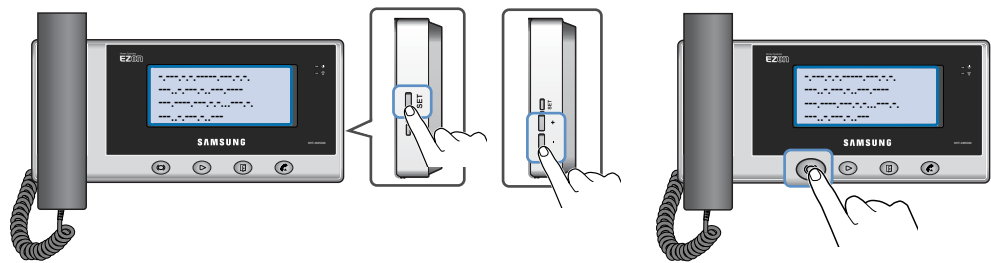
- To exit the user setting mode, select **D.EXIT**, and then press the **Interphone** button to save your settings. In addition, if there is no input for more than 10 seconds, the mode is automatically ended.
- If the unit power is off for more than 5 minutes, the RTC settings will be reset automatically.

# User Setting Functions

These functions are used to customize some product functions in the user's environment.

## ▶ Deleting all stored images

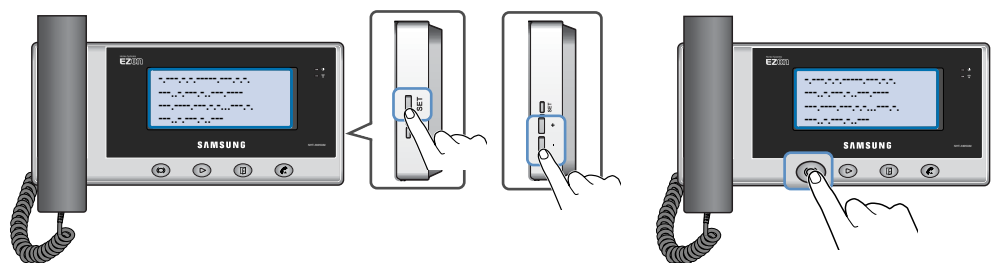
1. During the standby mode, press the **SET** button repeatedly to select the **5.ALL IMAGE DELETE**.
2. Press the **+ / -** buttons to select the **YES** or **NO**.  
YES: perform the deleting all images NO: cancel the deleting all images
3. To execute the selected condition, press the **Interphone** button.



- To exit the user setting mode, select **F.EXIT**, and then press the **Interphone** button to save your settings. In addition, if there is no input for more than 10 seconds, the mode is automatically ended.

## ▶ System initialization

1. During the standby mode, press the **SET** button repeatedly to select the **6. FACTORY DEFAULT**.
2. Press the **+ / -** buttons to select the **YES** or **NO**.  
Yes: Perform the initialization No: Cancel the initialization
3. To execute the selected condition, press the **Interphone** button.



- To exit the user setting mode, select **F.EXIT**, and then press the **Interphone** button to save your settings. In addition, if there is no input for more than 10 seconds, the mode is automatically ended.

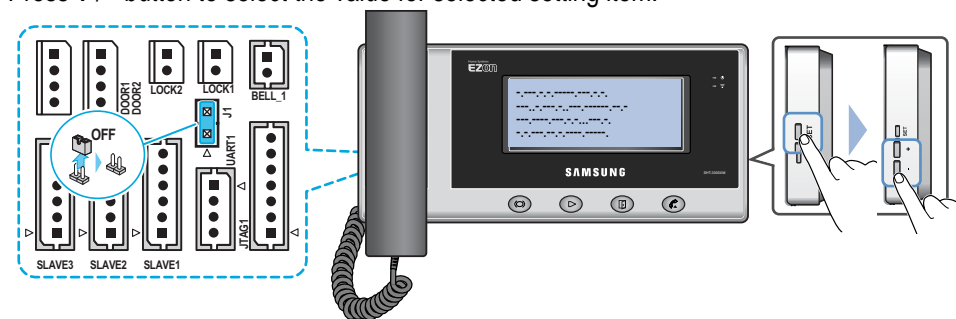
- **Default setting values**
  - Door 1 melody: Ding-dong 1
  - Door 2 melody: Ding-dong 2
  - Slave melody: Ding-dong 3
  - Voice volume/melody volume: 2 levels
  - Color/Contrast/Brightness: 2 levels
  - EVR: Deletion of all images
  - RTC: 2009/01/02/03/04

# Supervisor setting Functions

These functions are used to customize some product functions in the user's environment.

## ▶ Entering for supervisor setting mode

1. Remove the **J1 Jumper** on the SHT-3305's bottom to enter supervisor mode.(refer to 29 page)
2. Press the **SET** button to select a desired supervisor setting item.
3. Press **+ / -** button to select the value for selected setting item.



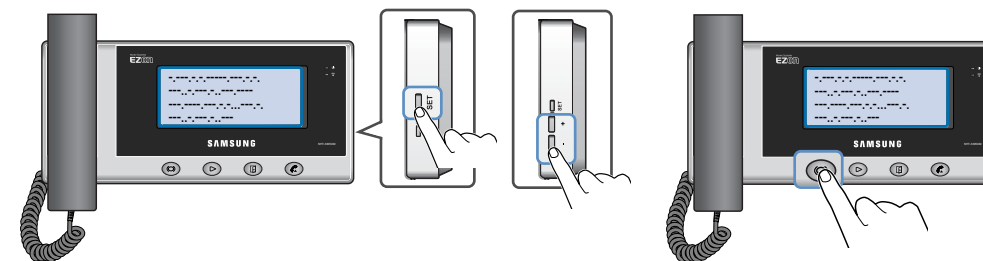
< SUPERVISOR MODE >			
1. ID SET	MASTER	A. DOOR2 CALL TIME SET	1MIN
2. CAMERA QUANTITY	1	B. SLAVE CALL TIME SET	1MIN
3. BELL SET	RELEASE	C. DOOR1 TALK TIME SET	3MIN
4. MELT1 LOBBY SET	RELEASE	D. DOOR2 TALK TIME SET	3MIN
5. DOOR1 OPEN SET	MAIN	E. SLAVE TALK TIME SET	3MIN
6. DOOR2 OPEN SET	MAIN	M. NAND BULK ADJUST	NO
7. DOOR1 OPEN TIME SET	1SEC	N. VIDEO MODE SELECT	NTSC
8. DOOR2 OPEN TIME SET	1SEC	O. SUPERVISOR DEFAULT	NO
9. DOOR1 CALL TIME SET	1MIN	Q. CHROMA DELAY	1SEC
		R. STORAGE IMAGE	128

- To save and exit your settings, press the **Interphone** button. In addition, if there is no input for more than 10 seconds, the setting mode is automatically ended.

## ▶ Setting the ID

Set to the Master or Slave mode, and select to Slave's ID.

1. During the Supervisor setting mode, press the **SET** button repeatedly to select **1.ID SET**.
2. Press the **+ / -** buttons repeatedly to select the **Master, Slave 1, Slave 2 or Slave 3**.
3. Press the **Interphone** button to store your setting, then exit.



- After connecting to the slave unit, be sure to set the SLAVE ID without overlap. Do not overlap the SLAVE ID when multi-units are connected, it may cause malfunction of the master or the slave unit.



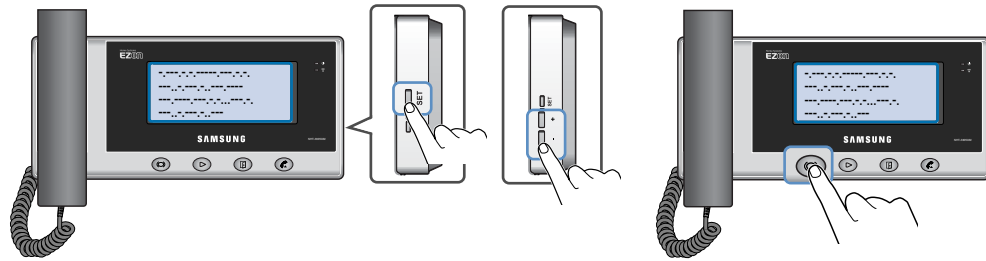
# Supervisor setting Functions

These functions are used to customize some product functions in the user's environment.

## ▶ Setting the Camera Quantity

Set to the camera quantity for the monitoring function.

1. During the Supervisor setting mode, press the **SET** button repeatedly to select **2. CAMERA QUANTITY**.
2. Press the **+ / -** buttons repeatedly to select the **1**, or **2**.
3. Press the **Interphone** button to store your setting.

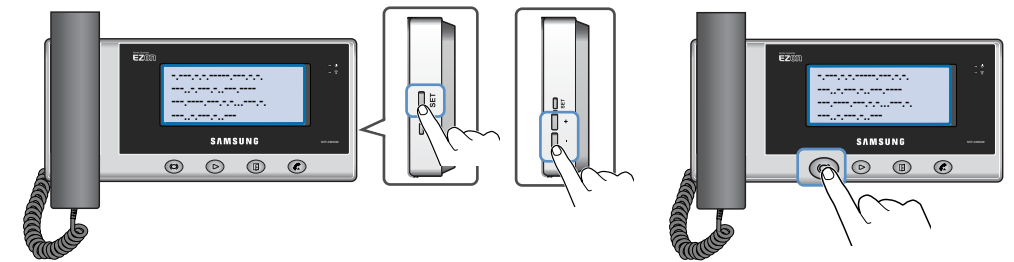


- After connecting to the cameras, set to be sure correctly that you connected all cameras quantity. Do not set to correctly, it may cause malfunction of the monitoring.

## ▶ Setting the Multi-lobby phone

Set to activation of the Multi-lobby phone mode.

1. During the Supervisor setting mode, press the **SET** button repeatedly to select **4.MELTI LOBBY SET**.
2. Press the **+ / -** buttons repeatedly to select the **SET**, or **RELEASE**.  
**SET**: The DOOR2 port is connected the multi-lobby phone.  
**RELEASE**: The DOOR2 port is connected the door phone
3. Press the **Interphone** button to store your setting.

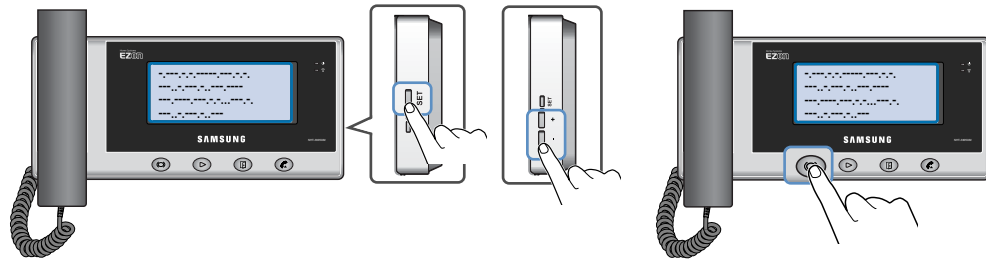


- After connecting to the Multi-lobby phone instead of the DOOR2, be sure set to "SET" on the 4.MELTI LOBBY SET item. The DOOR2 monitoring function is disabled.

## ▶ Setting the Bell

Set to activation of the door bell mode for the DOOR1 port.

1. During the Supervisor setting mode, press the **SET** button repeatedly to select **3. BELL SET**.
2. Press the **+ and -** buttons repeatedly to select the **SET** or **RELEASE**.  
**SET**: The BELL\_1 port is connected the door bell.  
**RELEASE**: The DOOR1 port is connected the door phone
3. Press the **Interphone** button to store your setting.

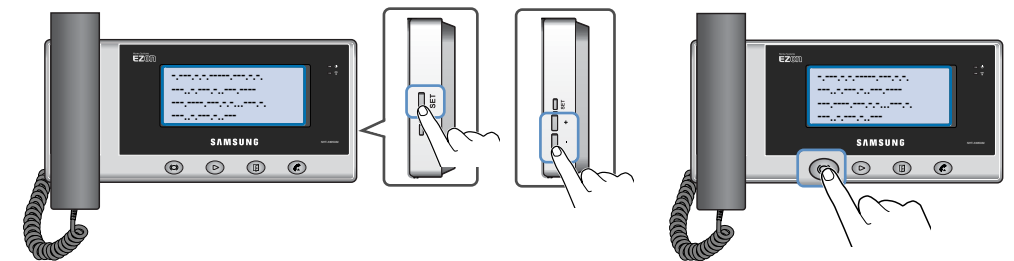


- After connecting to the bell instead of the DOOR1, be sure set to "SET" on the 3.BELL SET item and the DOOR1 port can not connect to nothing.
- When the BELL SET is SET, call time is set 30 seconds, door open function is activated, talk and monitoring functions are disabled.

## ▶ Setting the Door Open

Set to a door lock or door camera function for the Door1/2 port.

1. During the Supervisor setting mode, press the **SET** button repeatedly to select **5.DOOR1 OPEN SET** or **6.DOOR2 OPEN SET**.
2. Press the **+ and -** buttons repeatedly to select the **MAIN** or **CAMERA**.  
**MAIN**: The LOCK1/2 port is connected the door lock.  
**CAMERA**: The LOCK1/2 port is connected the door camera(SHT-CP611E/EN)
3. Press the **Interphone** button to store your setting.



- After connecting to the door lock or door camera to the LOCK1/2 port, be sure set to "MAIN" or "CAMERA" on the 5/6.DOOR1/2 OPEN SET item. If the DOOR1/2 OPEN SET is CAMERA, the door lock's open function is disabled.

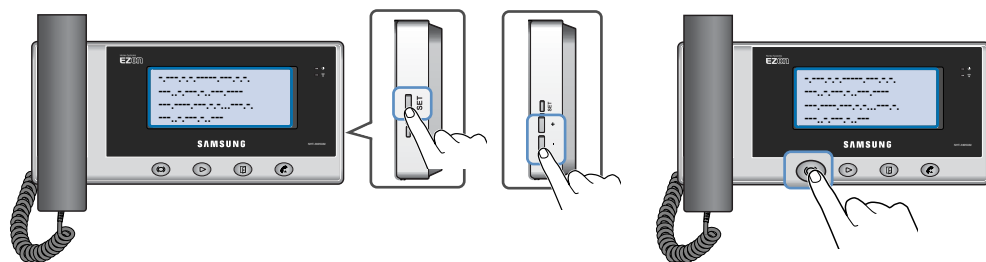
# Supervisor setting Functions

These functions are used to customize some product functions in the user's environment.

## ▶ Setting the Open Time

Set to the door lock open time for the Door1/2 port's door open function.

1. During the Supervisor setting mode, press the **SET** button repeatedly to select **7.DOOR1 OPEN TIME SET** or **8.DOOR2 OPEN TIME SET**.
2. Press the **+ / -** buttons repeatedly to select the **desired time (1SEC ~ 10SEC)**.
3. Press the **Interphone** button to store your setting.

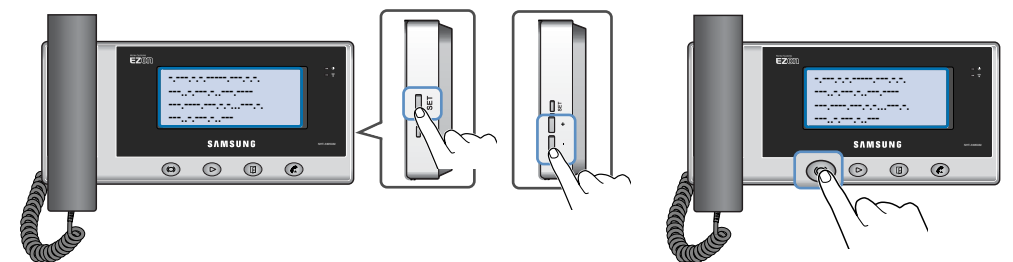


- After connecting to the door lock to the DOOR1/2 port, be sure set to the door open time on the 7/8.DOOR1/2 OPEN TIME item. Do not set to the DOOR1/2 OPEN TIME correctly, the door lock's open function can not used.

## ▶ Setting the Talk Time

Set to the each talk time limit for the Door1/2 or slave port's.

1. During the Supervisor setting mode, press the **SET** button repeatedly to select the **C.DOOR1 TALK TIME SET**, **D.DOOR2 TALK TIME SET** or **E.SLAVE TALK TIME SET**.
2. Press the **+ / -** buttons repeatedly to select the **desired time (30SEC ~ 1HOUR)**.
3. Press the **Interphone** button to store your setting.

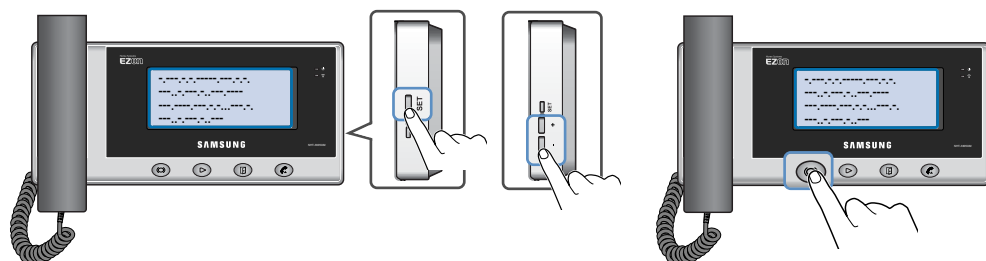


- After connecting to the DOOR1/2 or SLAVE port, be sure set to the talk time limit on the C/D.DOOR1/2 TALK TIME SET and E.SLAVE CALL TIME SET item.
- When the DOOR1 port is connected to door bell, the C.DOOR1 TALK TIME SET is not activated.

## ▶ Setting the Call Time

Set to the each call time limit for the Door1/2 or slave port's.

1. During the Supervisor setting mode, press the **SET** button repeatedly to select the **9.DOOR1 CALL TIME SET**, **A.DOOR2 CALL TIME SET** or **B.SLAVE CALL TIME SET**.
2. Press the **+ and -** buttons repeatedly to select the **desired time (15SEC ~ 10MIN)**.
3. Press the **Interphone** button to store your setting.

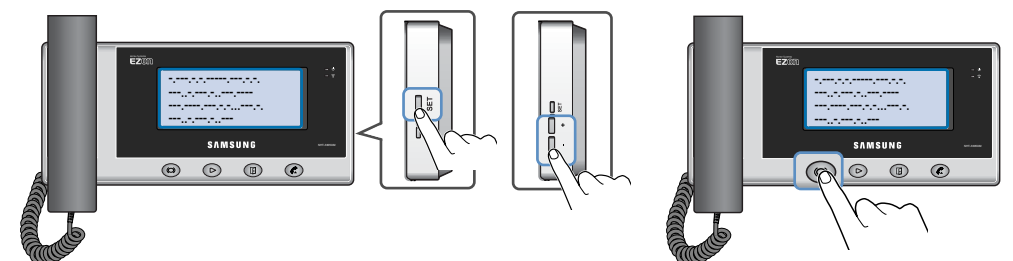


- After connecting to the DOOR1/2 or SLAVE port, be sure set to the call time limit on the 9/A.DOOR1/2 CALL TIME SET and B.SLAVE CALL TIME SET item.
- If a call is not made within the DOOR1/2's call time limit, the visitor's image is recorded/stored automatically.

## ▶ Setting the NAND Flash Bulk Check

Set to the NAND flash bulk check function enable or disable.

1. During the Supervisor setting mode, press the **SET** button repeatedly to select the **M.NAND BULK ADJUST**.
2. Press the **+ and -** buttons repeatedly to select the **YES** or **NO**.  
Yes: Activate the NAND flash bulk check function  
No: Disable the NAND flash bulk check function
3. Press the **Interphone** button to store your setting.
  - If the M.NAND BULK ADJUST set to YES, the unit will be start NAND flash bulk checking for more than 7 minutes.



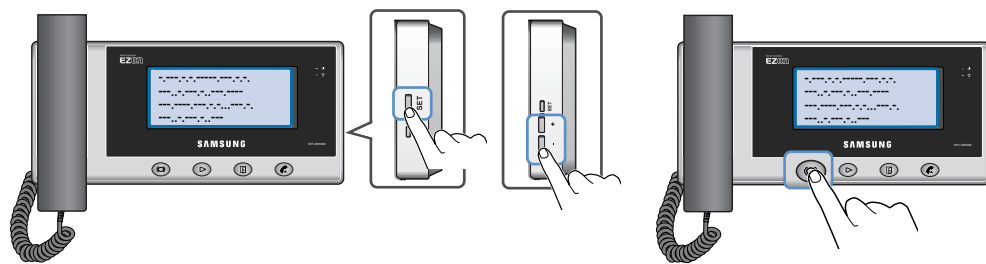
# Supervisor setting Functions

These functions are used to customize some product functions in the user's environment.

## ▶ Setting the Video mode

Set to the video signal scanning type for door camera1/2.

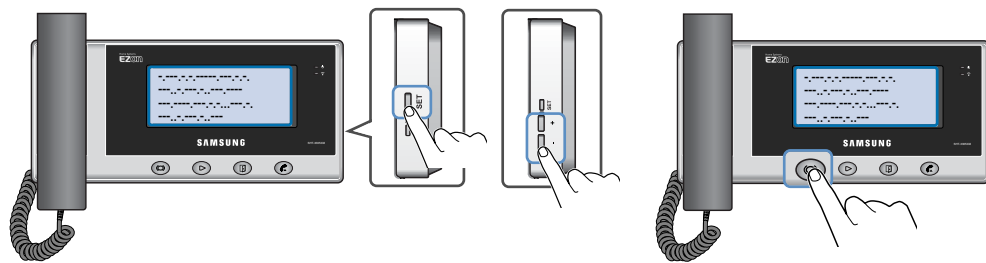
1. During the Supervisor setting mode, press the **SET** button repeatedly to select the **N.VIDEO MODE SELECT**.
2. Press the **+ / -** buttons repeatedly to select the **NTSC** or **PAL**.
3. Press the **Interphone** button to store your setting.



- After connecting to the DOOR1/2 port to camera (lobby), be sure set to the camera's video signal scanning type on the N.VIDEO MODE SELECT item.
- When the DOOR1 and DOOR2 port are connected to cameras, the both camera device's video signal type are same mode, otherwise display will be abnormal

## ▶ Initializing the Supervisor mode

1. During the Supervisor setting mode, press the **SET** button repeatedly to select the **O.SUPERVISOR DEFAULT**.
2. Press the **+ / -** buttons repeatedly to select the **YES** or **NO**.  
Yes: Perform the initialization      No: Cancel the initialization
3. Press the **Interphone** button to store your setting.



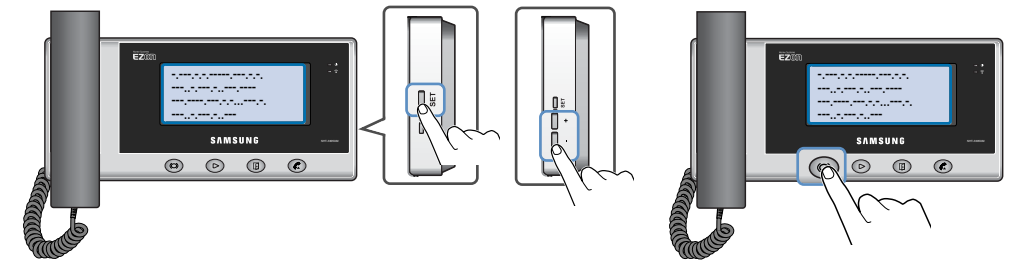
- **Supervisor Default setting values**

- ID	MASTER	- Door2 open time	1sec	- Nand bulk adjust	no
- Camera Quantity	1	- Door1 call time	1min	- Video mode	NTSC
- Bell set	Release	- Door2 call time	1min	- Indicate LED	OFF
- Melt lobby	Release	- Slave call time	1min	- Chroma dealy	1sec
- Door1 open	Main	- Door1 talk time	3min	- Storage image num	128
- Door2 Open	Main	- Door2 talk time	3min	- EVR rimage	ALL clear
- Door1 open time	1sec	- Slave talk time	3min		

## ▶ Setting the Chroma Delay

Set to the Chroma delay time for image displaying.

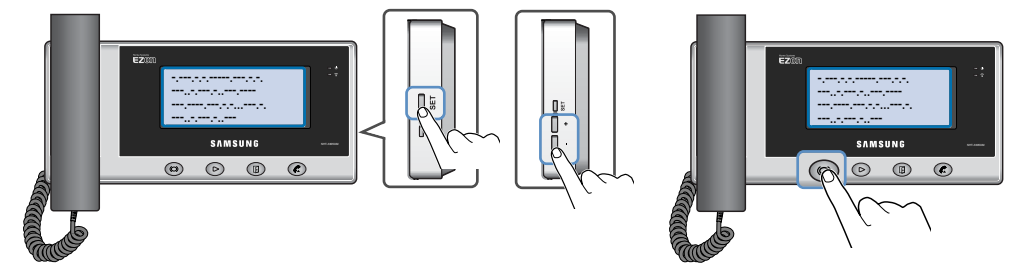
1. During the Supervisor setting mode, press the **SET** button repeatedly to select the **Q.CHROMA DELAT**.
2. Press the **+ and -** buttons repeatedly to select the **desired time (1SEC ~ 3SEC)**.
3. Press the **Interphone** button to store your setting.



## ▶ Setting the Stroge Image Number

Set to the number of stroge image.

1. During the Supervisor setting mode, press the **SET** button repeatedly to select the **R.STORAGE IMAGE NUM**.
2. Press the **+ and -** buttons repeatedly to select the **desired number (32, 64, 128 or 333)**.
3. Press the **Interphone** button to store your setting.



- After set to the R.STORAGE IMAGE NUM, the stored all images are deleted.

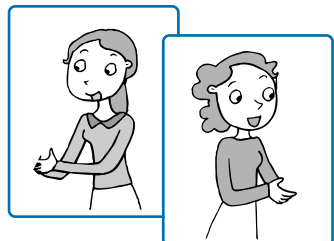
# Visitor Image Functions

These functions are used to record/store visitor images

## ▶ Auto-recording of missed visitor images

- The calling visitor's images are automatically recorded/stored in absent status or during sleeping time.

**7** If a call by a visitor is disconnected by not answering the call within CALL TIME by supervisor setting, the visitor's image is recorded/stored automatically.



- The recorded/stored images can be replayed/checked/ deleted in visitor image replay mode.

## ▶ Auto-recording of door camera stolen

- This function is applied only when SHT-611E/EN equipped with a tamper switch for camera anti-theft is installed.

**7** Ambient images that the camera installed in the entrance was facing at the moment when the camera is deviated or detached from the normal position are recorded/stored with warring bell.

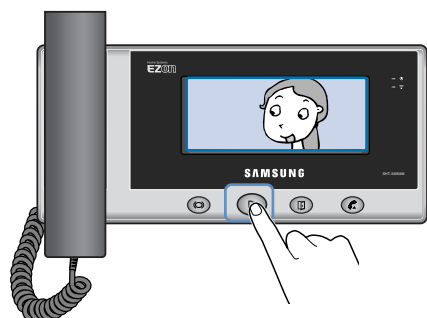


- To stop the warring bell, press and hold the **Interphone** button for more 2 seconds. (In case of IPE200 model : press and hold the **Open** button for more 2 seconds in the standard mode)
- **For return to tamper activation after tamper's detection**  
Be sure release to tamper's stop mode and reconnect to camera, then reset the power.

## ▶ Recording visitor images manually

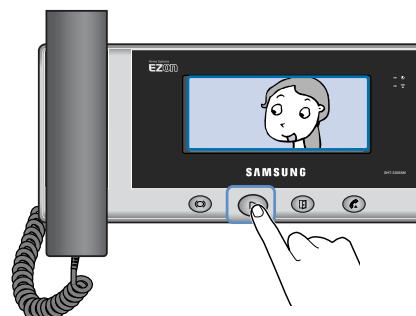
- Visitor images are manually recorded/stored when the images are displayed on the screen.

**7** When an image is displayed on the screen, the screen image can be recorded/stored at any time by pressing the **Record/Replay** button.

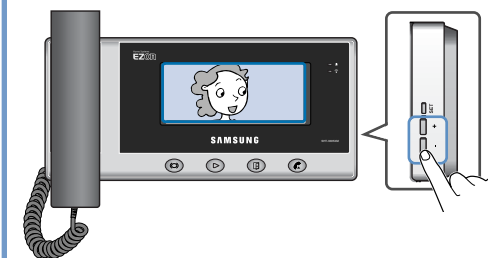


## ▶ Replaying stored images

**7** The stored images can be replayed by pressing the **Record/Replay** button in standby mode.



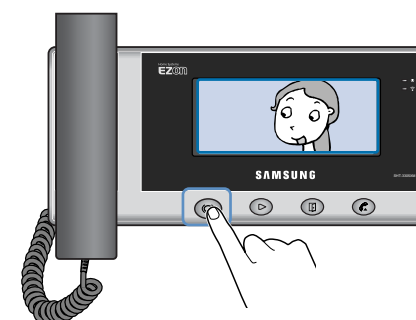
**2** The next image can be replayed by pressing the + and - buttons in image replay mode.



- If no image is stored, the text showing "No Image" is displayed on the screen.

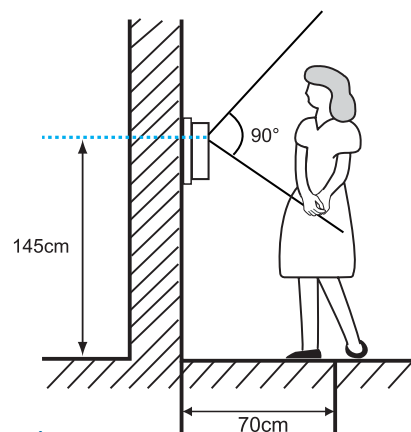
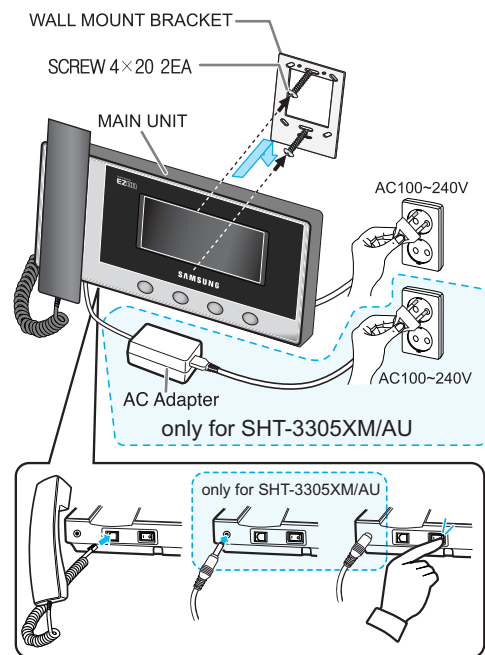
## ▶ Deleting the current image

**7** The current image can be deleted by pressing **Interphone** button in image replay mode.



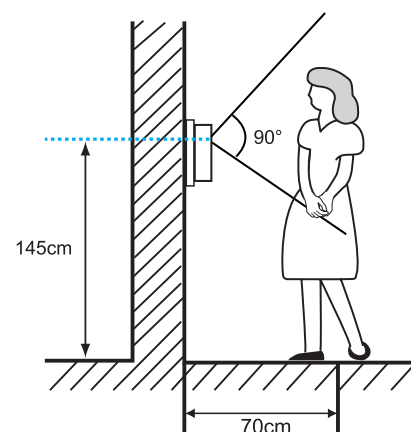
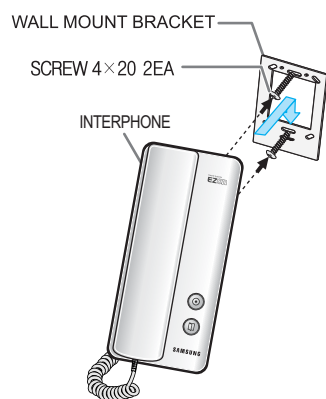
## Household unit/Interphone

**Product Installation Drawing** - Installation method and height of household unit automatically.



**Warning**

- Be careful of electric shock and fire when connecting AC power or AC Adaptor(only for SHT-3305XM/AU).
- Be sure turn on the power switch after connecting the power cord or AC Adaptor(only for SHT-3305XM/AU).



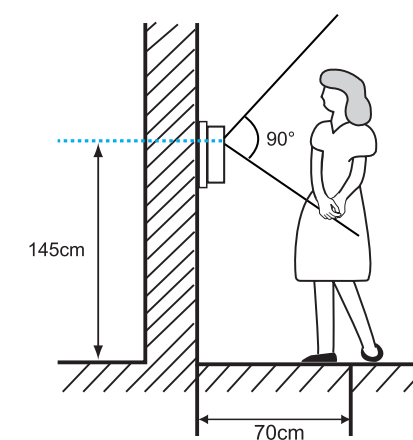
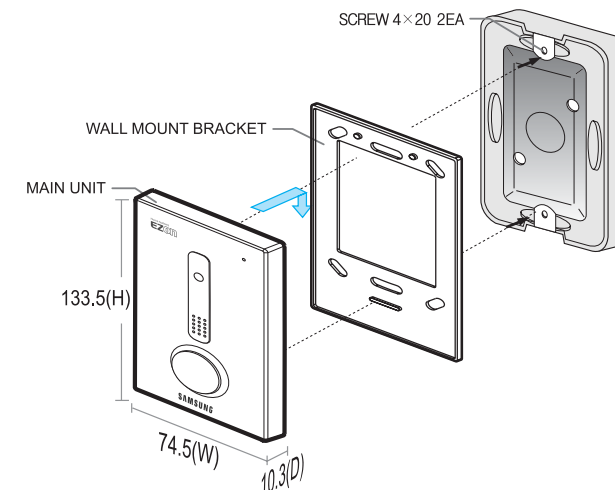
### How to install

1. Select a place to install the product.  
(Install the product and place the center of the household unit or interphone at a height of 145 cm from the floor.)
2. Fix the wall mount bracket on the selected place with 2 screws.
3. Connect the wires of the door camera and interphone (optional) to the household unit terminal.
4. After mounting the household unit or interphone on the bracket, secure it with screws on the bottom of the household unit.
5. Connect the power cord or AC Adaptor(only for SHT-3305XM/AU).
6. Turn on the power switch on the bottom of the product and make sure that the power is applied.

## Door Camera

**Camera Installation Drawing** - Installation method and height of door camera

◆ SHT-CP601EN, SHT-CP611/EN, SHT-CP611E/EN



### How to install

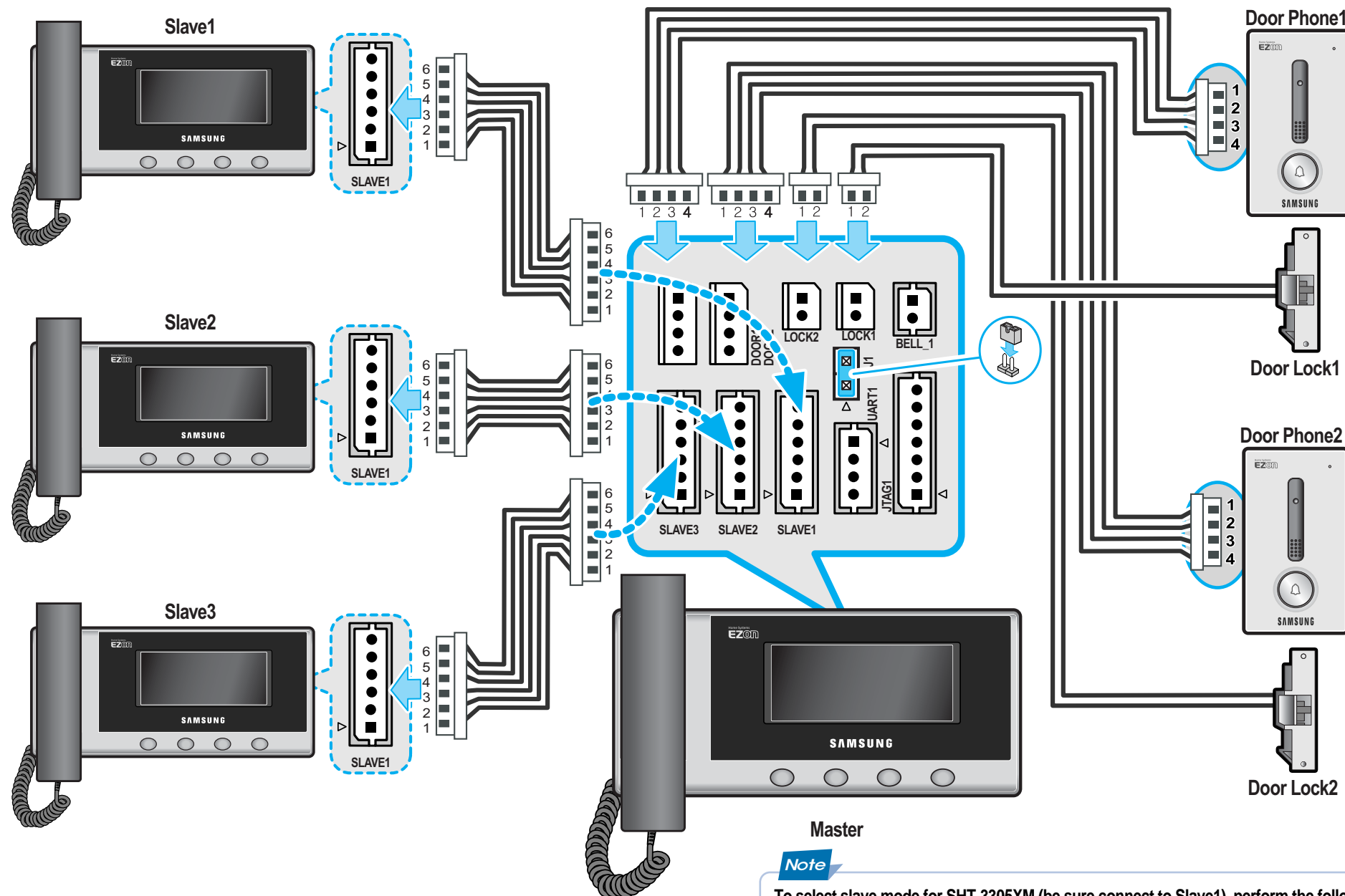
1. Select a place to install the product.  
(Install the door camera and place the center of the camera at a height of 145 cm from the floor.)
2. Fix the wall mount bracket on the selected place with 2 screws.
3. Connect the connection wire of the household unit to the door camera terminal.
4. Check that the household unit can be called.

### Cautions for installation

1. Avoid the direct sunlight, or a place where rainwater spatters, or it is near chemicals and high voltage power lines.
2. Do not install in a place with too high or too low temperatures if possible.

For safety and correct product connection, always install the product as shown in the wiring diagram below;

## ▶ 3 Household units + 2 Door phones (Door locks)



**Note**

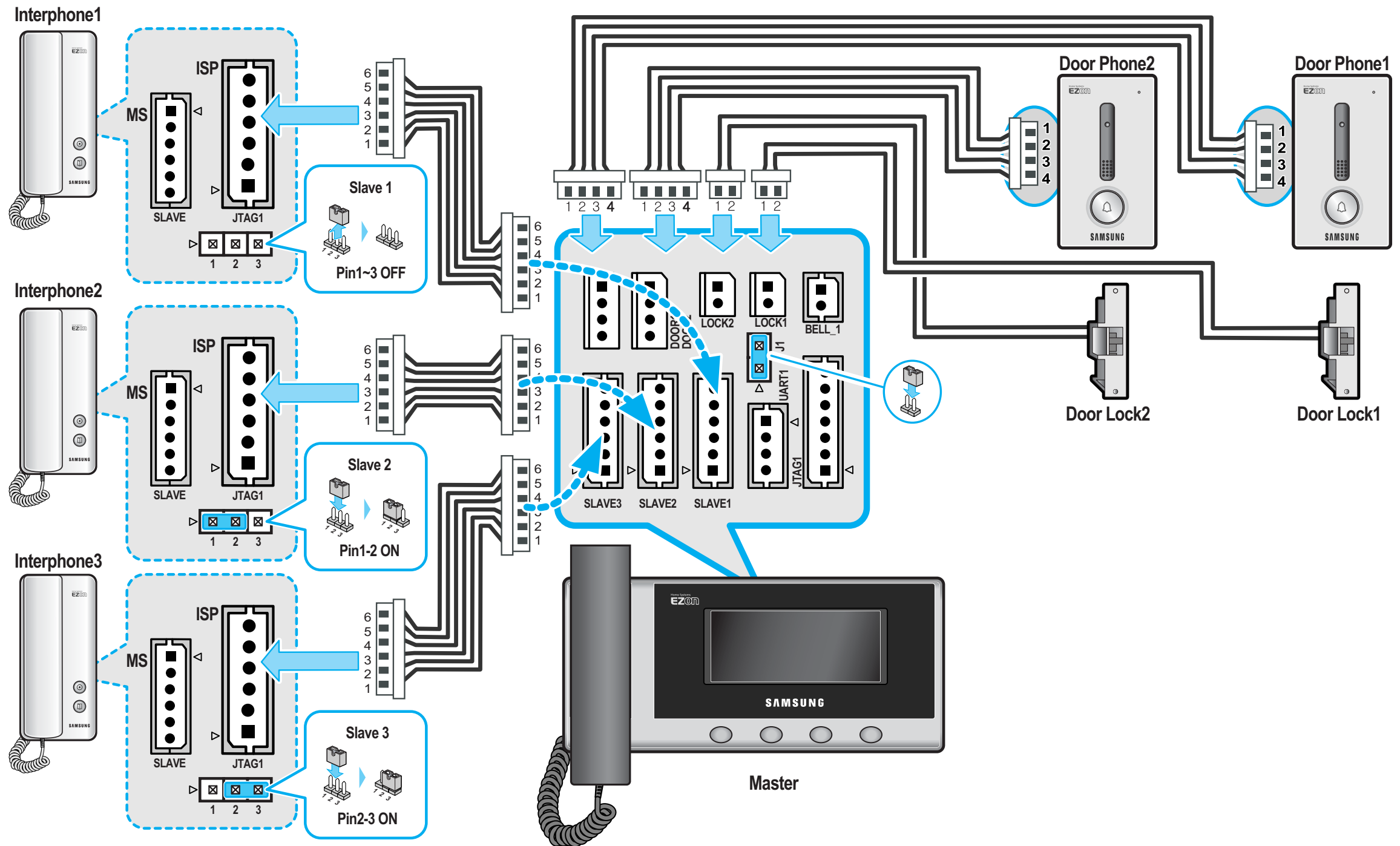
To select slave mode for SHT-3305XM (be sure connect to Slave1), perform the following procedure:

1. Remove the J1 shunt on the bottom of SHT03305XM to set to supervisor setting mode.
2. Press the **SET** button in supervisor mode to select [1. ID SET SLAVE1].
3. Press the + and - buttons to select the [SLAVE1].
4. Press the **Interphone** button to save and exit.

To set the connected unit to SLAVE device, be sure set to the SLAVE ID without overlap. If the SLAVE ID is overlapped, the unit may malfunction.

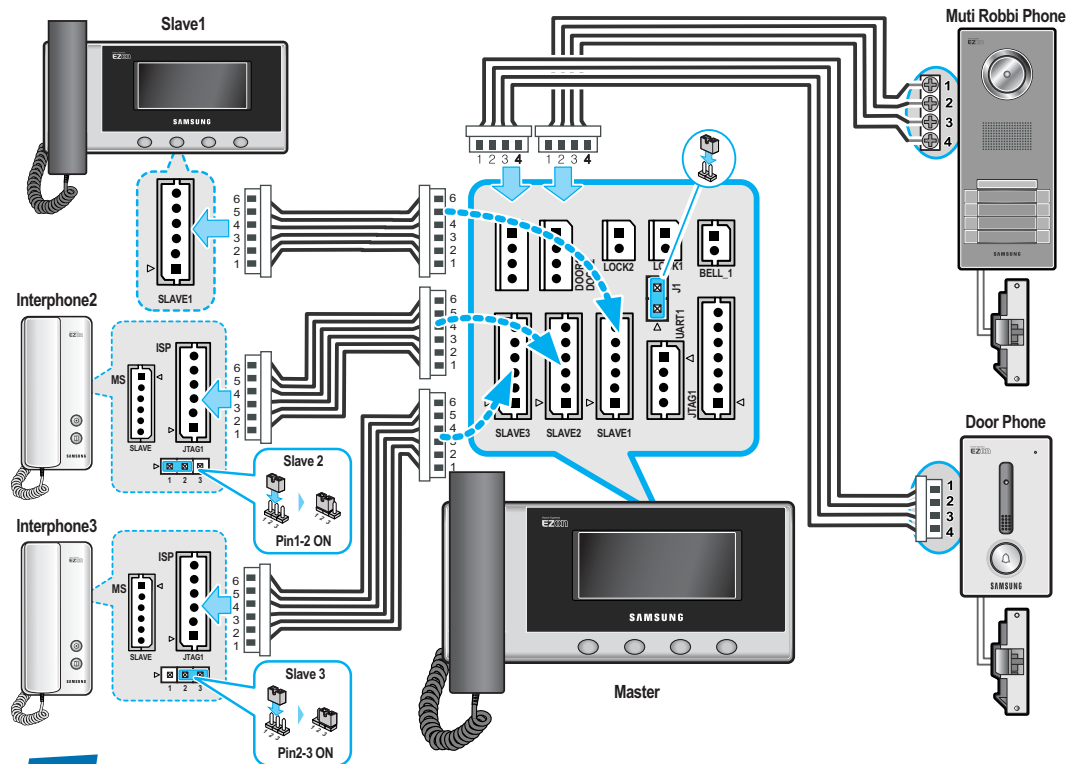
For safety and correct product connection, always install the product as shown in the wiring diagram below;

## 3 Interphones+ 2 Door phones (Door locks)



For safety and correct product connection, always install the product as shown in the wiring diagram below:

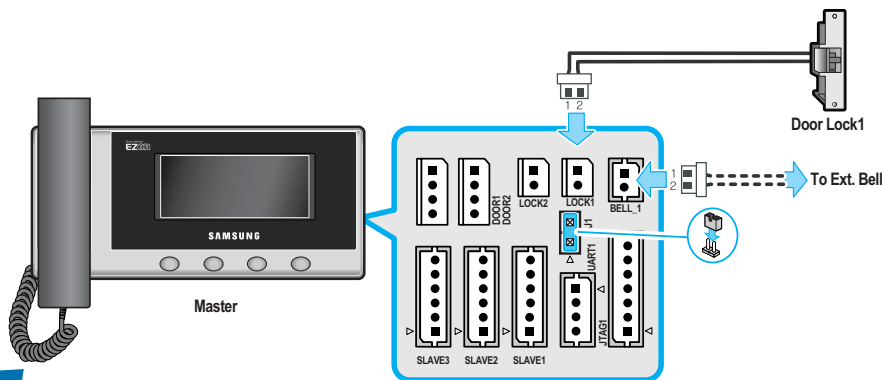
## Household unit + 2 Interphones + door phone (Door lock) + multi-lobby phone



### Note

- Be sure the multi-lobby phone connect to the DOOR2 port.
- The door lock can connect to the doorphone. If the door lock is connected, be sure set the DOOR OPEN SET item of the supervisor setting mode is CAMERA for door open function.
- Installing the door lock system designated by our company to your entrance door enables you to open the door by pressing the **Door Open** button during an entrance call.

## 1 Door lock + 1 Doorbell



### Note

- If a doorbell is connected, the DOOR1 port does not connect anything.
- If a doorbell is connected, be sure set the BELL SET item of the supervisor setting mode is SET.

## Connection cable specifications

Household unit VS Door Camera	
1 [RED]	+ 12 V
2 [GREEN]	VOICE
3 [WHITE]	VIDEO
4 [BLACK]	GND

Household unit VS Lobbi phone	
1 [RED]	+ 12 V
2 [GREEN]	VOICE
3 [WHITE]	VIDEO
4 [BLACK]	GND

to SHT-CP611E/EN Door Lock	
1 [RED]	DOOR LOCK
2 [BLACK]	DOOR LOCK

Household unit VS Interphone/Slave	
1 [RED]	+ 12 V
2 [BLUE]	DATA
3 [ORANGE]	SOUND 1
4 [VIOLET]	SOUND 2
5 [WHITE]	VIDEO
6 [BLACK]	GND

Household unit VS Door Lock	
1 [RED]	DOOR LOCK
2 [BLACK]	DOOR LOCK

Household unit VS Bell	
1 [RED]	DOOR LOCK
2 [BLACK]	DOOR LOCK

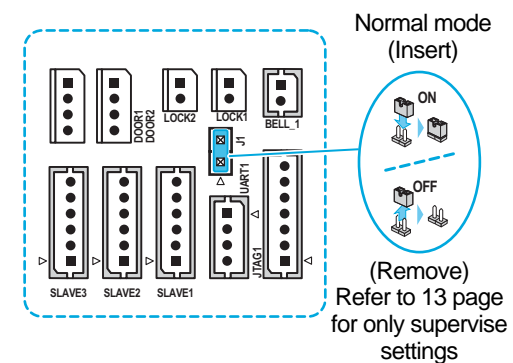
### Warning

- This function is applied only

## Various settings

### Setting supervise mode

[Setting J1 Jumper on the SHT-3305' s bottom]



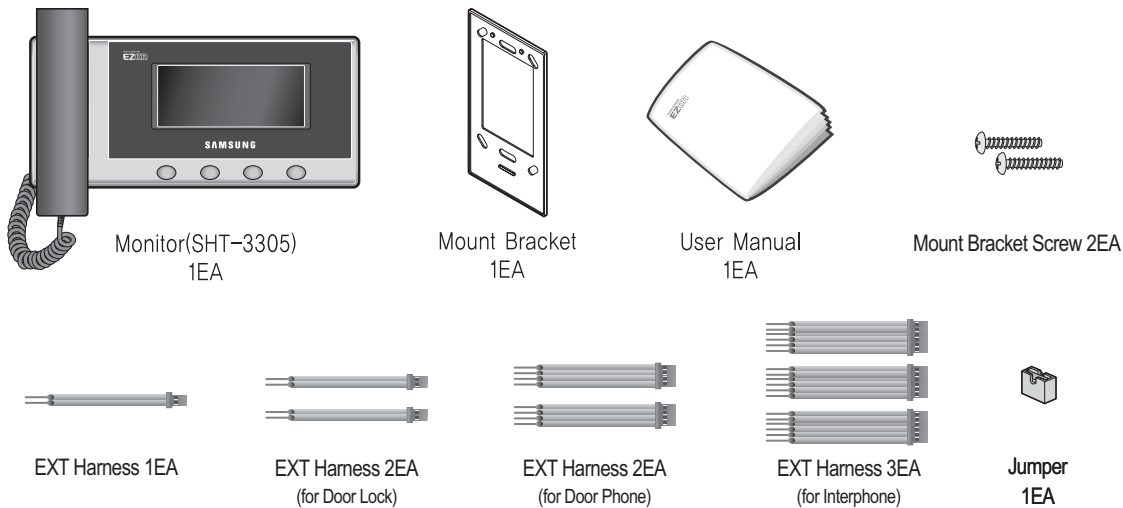
### Caution

- After changing the setting switch, always turn the power off and on.

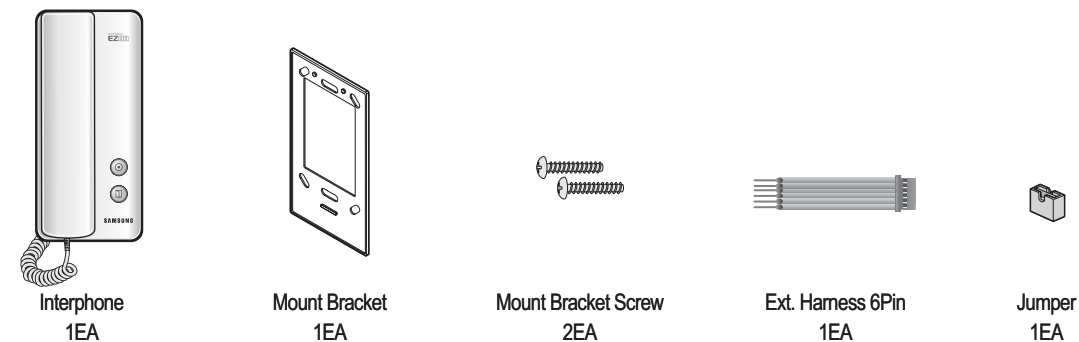


The product packages are as shown in the figure below. Check they contain all components.

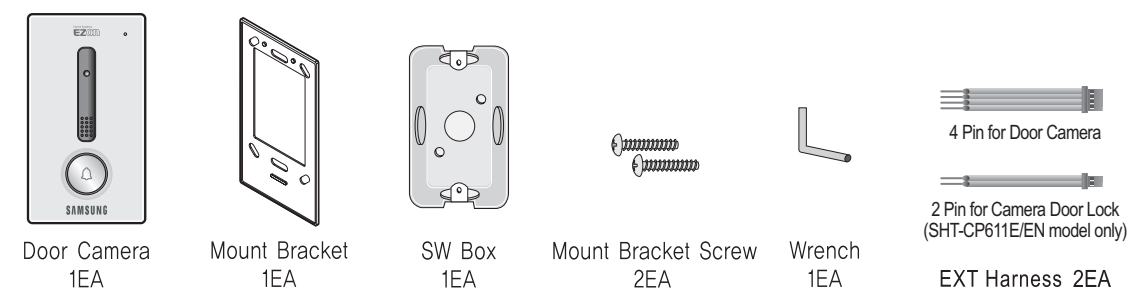
## ▶ Household unit (SHT-3305 Series)



## ▶ Interphone (SHT-IPE200/ENI)



## ▶ Door Camera (SHT-CP601/EN, SHT-CP611/EN, SHT-CP611E/ENI)



## ▶ Check This First!

### The power does not turn on.

- Make sure if the power is connected.

### The screen is too dark.

- Check the condition of the exterior lighting in the area of the camera.
- Clean the exterior surface of the door camera.
- Adjust the screen brightness in the function settings. (refer to page 11)  
The screen brightness settings consist of 4 phases and factory default set is 2.

### There is too much noise during calls.

- Check to see if the door phone line has been short-circuited with the ground.

### Calls are not audible.

- Check the volume setting.
- Check the wire connection between the monitor and the camera.

## ▶ Household unit (SHT-3305 Series)

Device	Category	Specifications
SMPS (SHT-3305XM/EN)	Input Power	100V - 240 V ~, 1.0 A, 50 - 60 Hz
	Max. Power Consumption	18 W
	DC Output Voltage/Current	12 V / 1.5 A
	Weight	70 g

Device	Category	Specifications
SHT-3305	Communication Mode	Hands-free/Handset Communication
	Monitor Screen Size	4.3inch (Diagonal)
	LCD Resolution (dot)	4.3inch RGB 480(H) x 272(V)
	LCD Screen Visible Angles	4.3 inch Horizontal : $\pm 80^\circ$ , Vertical : $\pm 80^\circ$ (Condition C/R $\geq 10$ )
	Video Scan Type	NTSC/PAL (Composite)
	Video Signal Wire Connection	Two-wire Connection
	Camera Transmission Distance	Diameter : 0.65 mm / Optimal Distance: 30 m or less
	Chime Melody	Refer to page 10
	Main Unit Electricity Consumption	Max. 1.3 A
	Weight	1.2 Kg
	Dimension	200 mm(W) x 130 mm(H) x 35 mm(D)

## ▶ Interphone (SHT-IPE200/EN)

Device	Category	Specifications
SHT-IPE200/EN	Communication Mode	Handset Communication
	Chime Melody	Ding Dong, Cuckoo Waltz, Fur Elise
	Main Unit Electricity Consumption	Max. 150mA
	Weight	340g
	Dimension	98.5 mm(W) x 214 mm(H) x 54.8 mm(D)

## ▶ Door Camera (SHT-CP601/EN, SHT-CP611/EN, SHT-CP611E/EN)

### ◆ SHT-CP601/EN

Unit Name	Items	Standards
DOOR Camera	Input Power	DC 12 V (Supplied from the household unit)
	Video Signal Scanning Method	CCIR type
	Dimensions	74.5 mm(W) x 135.5 mm(H) x 10.3 mm(D)
	Weight	180 g

### ◆ SHT-CP611/EN

Unit Name	Items	Standards
DOOR Camera	Input Power	DC 12 V (Supplied from the household unit)
	Video Signal Scanning Method	PAL type
	Dimensions	74.5 mm(W) x 135.5 mm(H) x 10.3 mm(D)
	Weight	180 g

### ◆ SHT-CP611E/EN

Unit Name	Items	Standards
DOOR Camera	Input Power	DC 12 V (Supplied from the household unit)
	Video Signal Scanning Method	PAL type
	Dimensions	74.5 mm(W) x 135.5 mm(H) x 10.3 mm(D)
	Weight	180 g

## ▶ Product Warranty

Seoul Commtch Products are supplied with one(1) year warranty base from the date of purchase, we'll repair or replace the defective product with a new or factory rebuilt replacement.

### Subject of Warranty

1. This warranty applies to the original purchase only.
2. All warranty will be invalid if unauthorized repair or modifications are made to the unit or in any case of accident, misuse, damage caused by improper installation and altered serial numbers.
3. If you need a warranty service, you should send the product to customer Dep't or dealer office, the product in all cases must be accompanied by the following items; Customer name, address, telephone number, the serial numbers, copy of customer sales receipt showing the purchase date and place

The Model number is on the box and front of the manual. The serial number is on the unit. Record the Model and serial numbers in the spaces provided below. Refer to these numbers for warranty service.

Model No. \_\_\_\_\_

Serial No. \_\_\_\_\_