

# EasyCoding User Manual

## Table of contents

1. Software operating system .....	2
2. Software download and installation .....	2
2.1 Software download.....	2
2.2 Software installation .....	2
3. Product instruction .....	6
3.1 Parts .....	6
3.2 EasyCoding Function .....	6
4. Connection mode .....	9
4.1 The position of vehicle diagnosis socket.....	9
4.2 Connection mode of ENET .....	10
5. Software operation manual .....	10
5.1 Software operating environment .....	10
5.2 Vehicle condition .....	10
5.3 Internet condition .....	11
6. Operating software.....	11
6.1 Diagnostic function .....	12
6.2 DTC.....	13
6.3 Customization .....	13
6.3.1 Common mode .....	14
6.3.2 Expert Mode .....	16
7. Options.....	19
8. Registration .....	19
9. Upgrading.....	19
10. Help .....	19
11. Service .....	19
11.1 Guarantee clause .....	19
11.2 Feedback.....	19

1. Software operating system

- Requirements for hardware: laptop, PC, PAD. Space of system disk is no less than 5G, and RAM is no less than 2G.
- Operating system: Supporting WINDOWS XP SP3, WIONDOWS 7 and WIONDOWS 8, but not WINDOWS RT.
- Requirements for internet: The software needs to be upgraded online, please make sure your internet is connected.



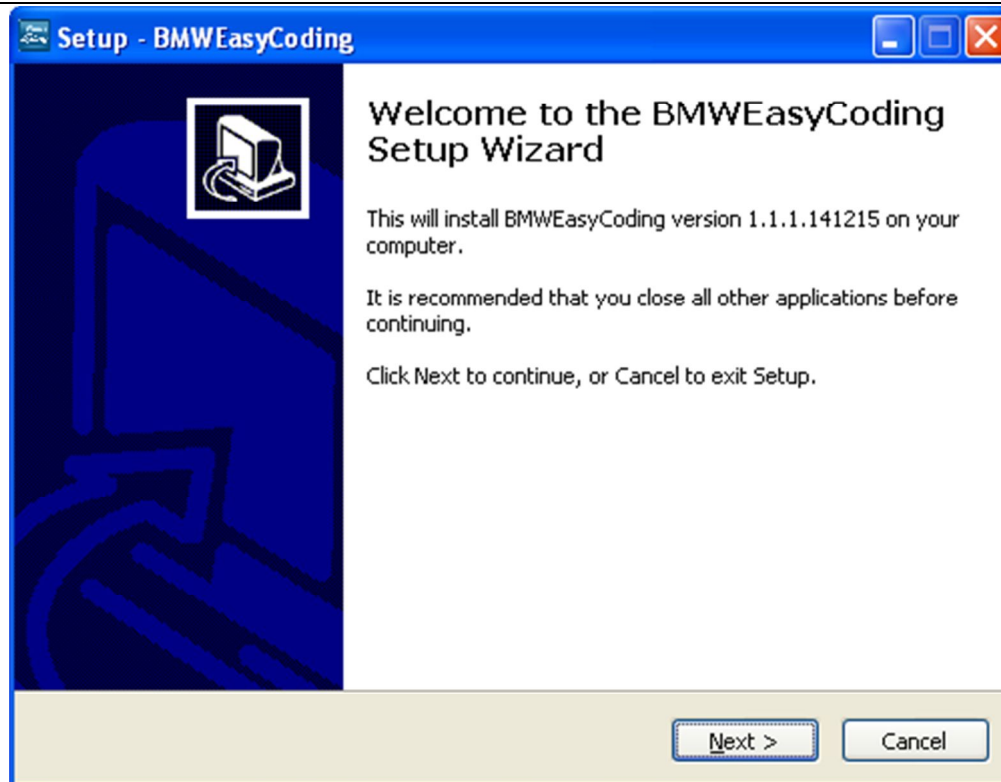
2. Software download and installation

2.1 Software download

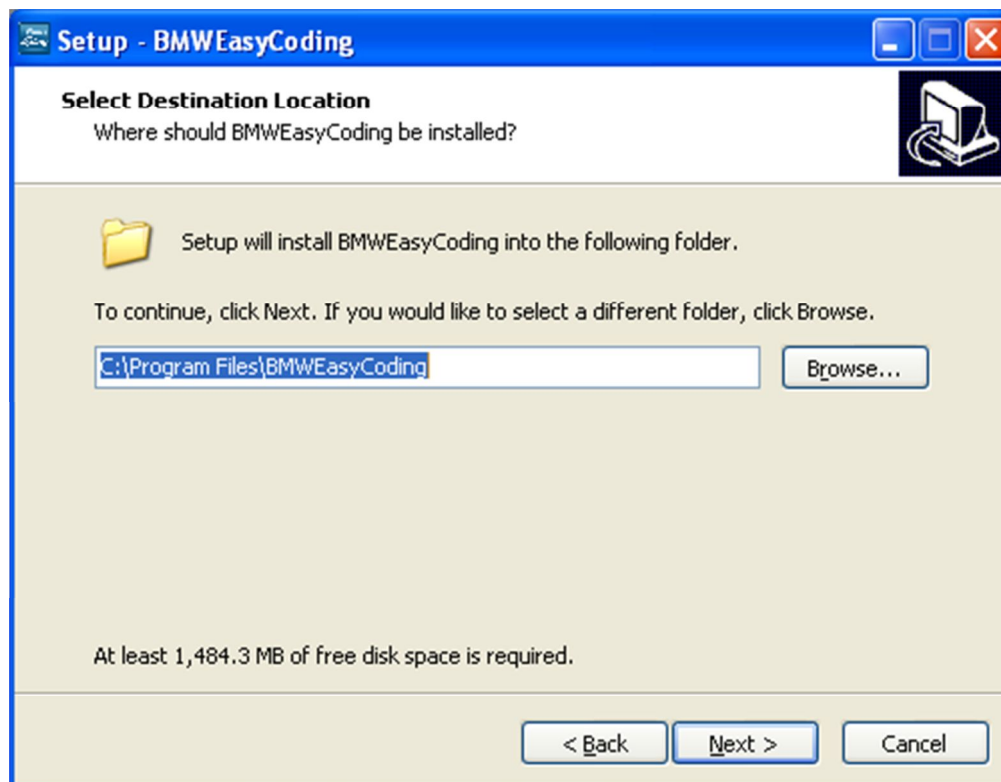
Log in <http://www.euseauto.com> and download EasyCoding\_setup\_V1.0 installation package.

2.2 Software installation

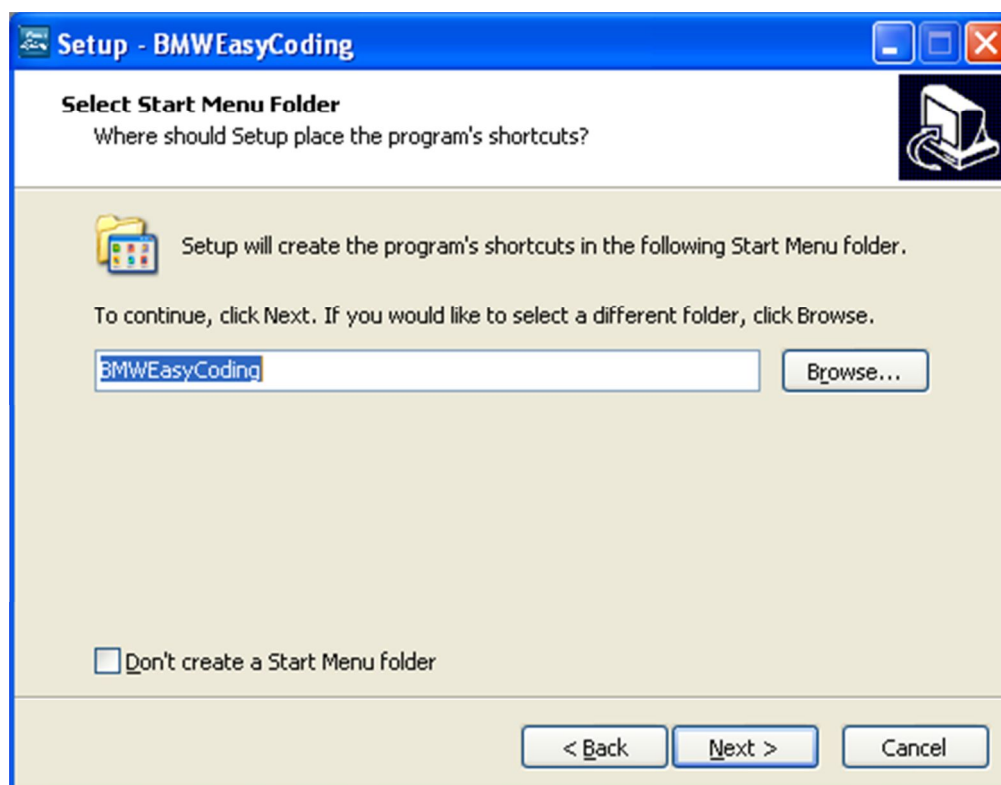
Decompress EasyCoding\_setup\_V1.0 package and release the folder *setup.exe* or you can find *setup.exe* from manufacturer's Sandisk. The following is an example:



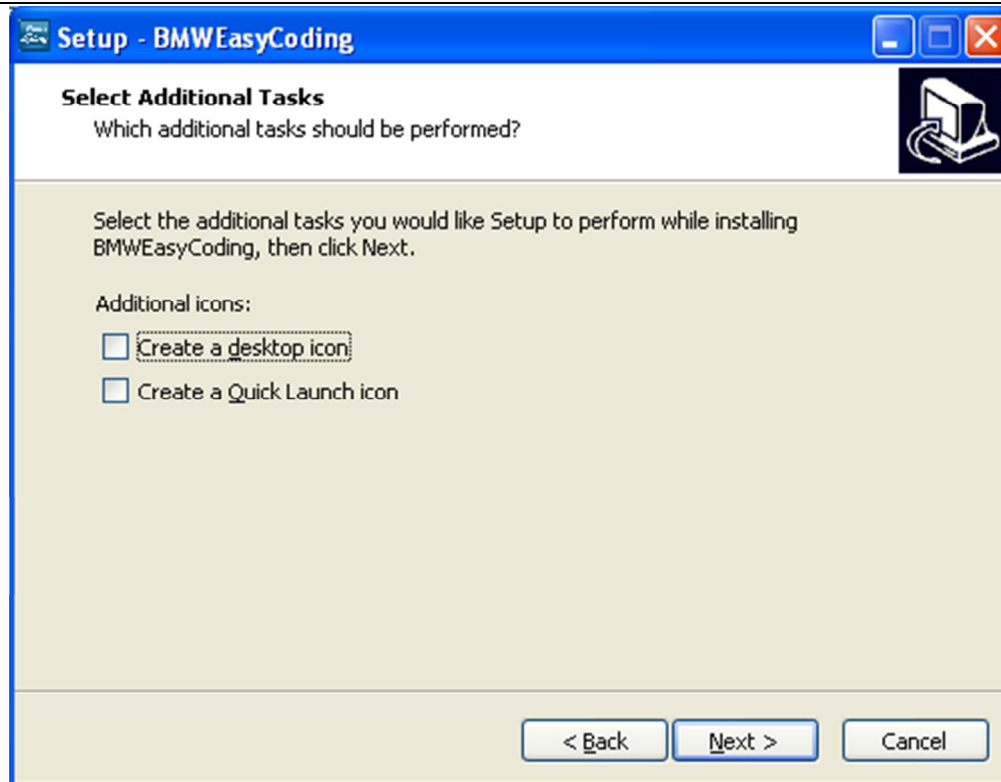
Press 【Next】



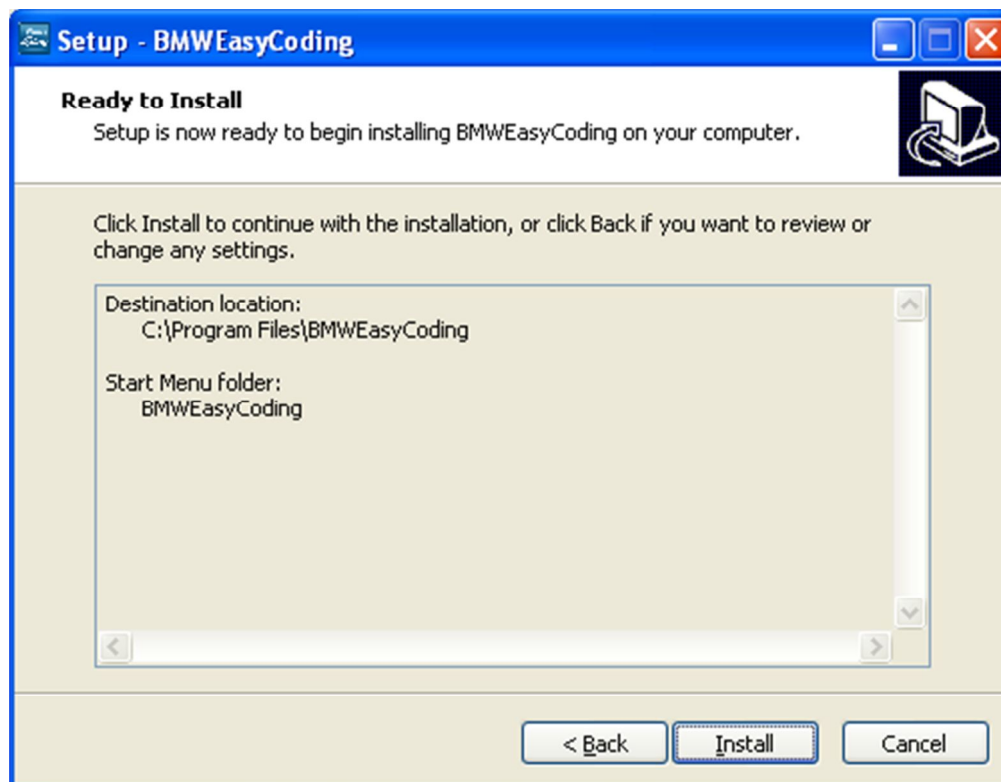
Press 【Next】



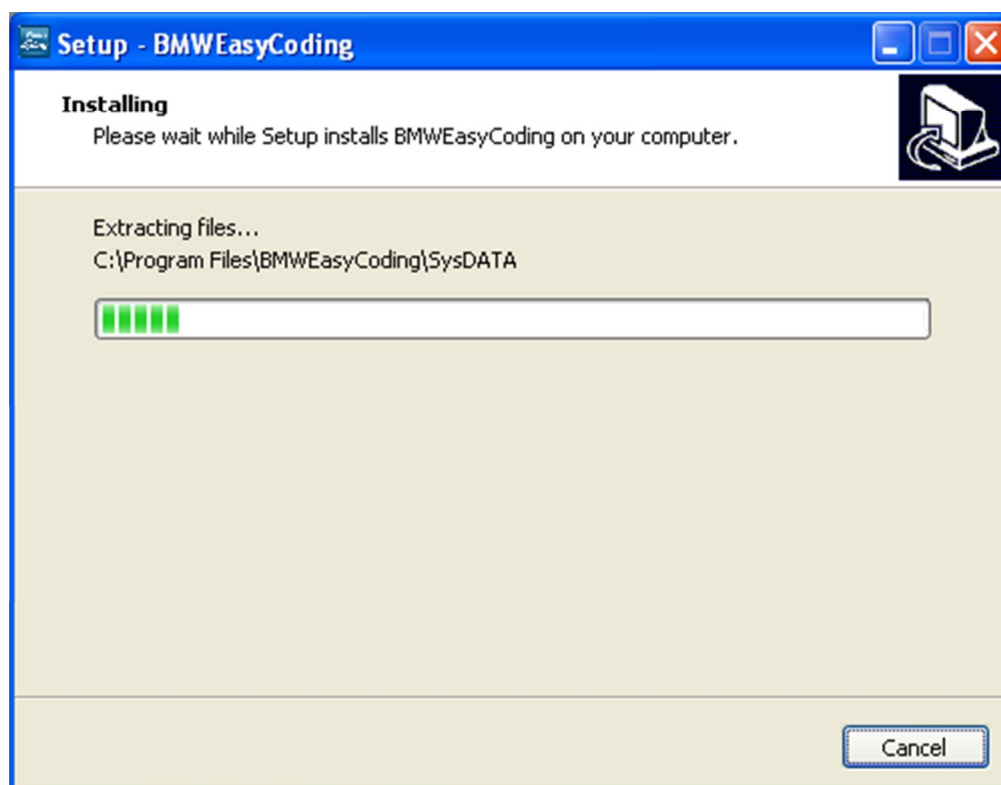
Press 【Next】

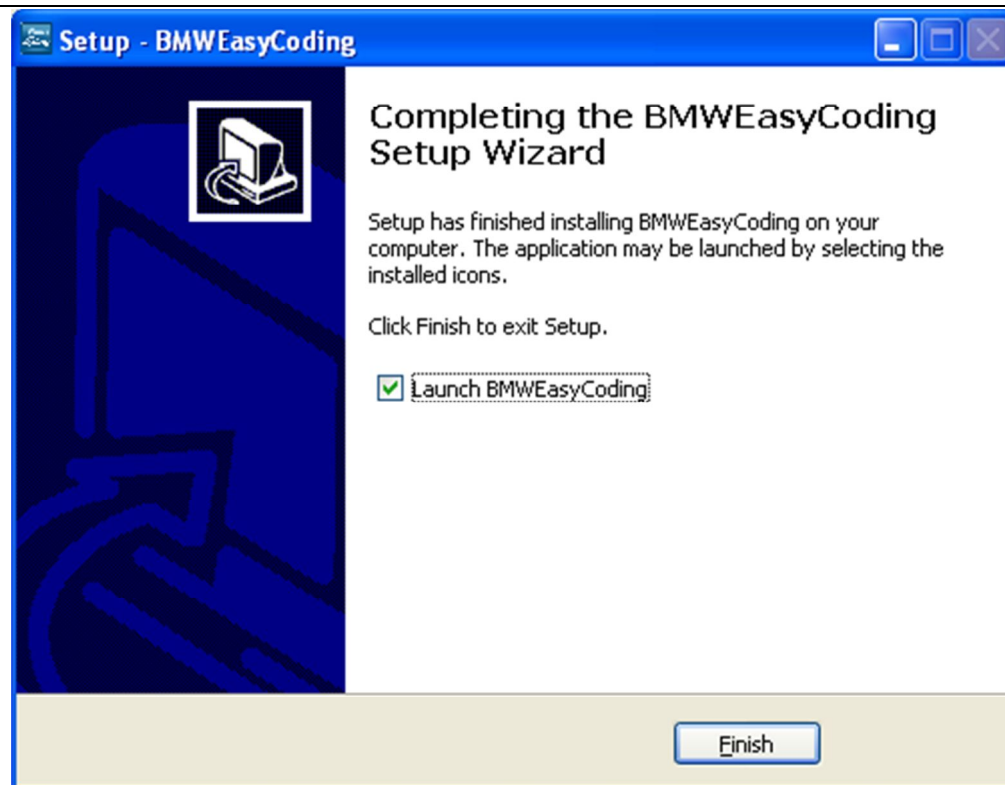


Choose “Create a desktop icon” and then press 【Next】



Press 【Install】





Press **【Finish】** to operate “EasyCoding”

If Superdog is not inserted, the following information will pop up.







If Superdog is inserted, you will enter software application interface.





## 3. Product instruction

### 3.1 Parts

Number	Picture	Name	Function
1		ENET Contactor	Connect OBD diagnosis socket
2		Cable	Connect PC and ENET Contact
3		USB Flash disk	EasyCoding installation software
4		Superdog	Superdog must be inserted in USB interface of your PC when applying EasyCoding

### 3.2 EasyCoding Function

EasyCoding is a newly developed device for reading BMW and Rolls-Royce fault codes and making vehicle personalized settings. Below is a list of car models and model years that it supports:

Dev. Platform	Car models	Year of made	Dev. Platform	Car models	Year of made
F01	BMW 7 Series Sedan	Oct. 2010 upwards	F31	BMW 3 Series Wagon	Oct. 2012 upwards
F02	BMW 7 Series Limo	Apr. 2009 upwards	F32	BMW 3 Series Coupe	Dec. 2012 upwards
F03	BMW 7 Series High Security	Nov. 2011 upwards	F33	BMW 3 Series Convertible	May 2013 upwards
F04	BMW 7 Series Hybrid	Apr. 2012 upwards	F34	BMW 3 Series Gran Turismo	Mar. 2013 upwards
F06	BMW 6 Series Gran Coupe	Jan. 2013 upwards	F35	BMW 3 Series Gran Coupe (China Limo)	Aug. 2012 upwards
F07	BMW 5 Series Gran Turismo	Dec. 2012 upwards	F36	BMW 4 Series Coupe	Sep. 2013 upwards
F10	BMW 5 Series Sedan	Jun. 2009 upwards	F55	MINI Cooper	Feb. 2014 upwards
F11	BMW 5 Series Wagon	Apr. 2011 upwards	F56	MINI Cooper	Jan. 2014 upwards
F12	BMW 6 Series Convertible	May 2012 upwards	F80	M3 4-Door Sedan	Apr. 2014 upwards
F13	BMW 6 Series Coupe	Mar. 2012 upwards	F82	M3 2-Door Coupe	May 2014 upwards
F15	BMW X5 M Sport	May 2014 upwards	F83	M3 Convertible	Apr. 2014 upwards
F16	BMW X6 Sports Activity Croup	Mar. 2014 upwards	F85	BMW X5 M SUV	Mar. 2014 upwards
F18	BMW 5 Series Sedan (China Limo)	Oct. 2010 upwards	F86	BMW X6 M SUV	Feb. 2014 upwards
F20	BMW 1 Series Luxury Sedan	Jan. 2013 upwards	RR1	Rolls-Royce luxury sedan series II	Nov. 2002 upwards
F21	BMW 1 Series Sedan	Oct. 2012 upwards	RR2	Rolls-Royce Corniche Convertible II	Jun. 2006 upwards
F22	BMW 1 Series Sedan	Jan. 2014 upwards	RR3	Rolls-Royce luxury sport cars series II	Aug. 2011 upwards
F23	BMW 1 Series Convertible	Apr. 2014 upwards	RR4	Rolls-Royce luxury sedan	May 2015 upwards
F25	X3 SUV	Jan. 2011 upwards	RR5	Rolls-Royce Ghost	Feb. 2014 upwards
F26	X4 SUV	Jan. 2014 upwards	RR6	Rolls-Royce Convertible	Feb. 2014 upwards

Dev. Platform	Car models	Year of made	Dev. Platform	Car models	Year of made
F30	BMW 3 Series Gran Coupe	Sep. 2011 upwards			

Table 1. EasyCoding car model and model year list

Personalization functions please see Table 2. Personalization function list.

Note: To check out if some functions are available on specific cars, please look up that car's settings according to the table below. These functions vary from vehicle to vehicle. Because of different hardware configuration, some functions may not available on certain cars.

#	System	Function
1	HU	Add Select Sound Effects Of Lock/Unlock In I-drive Operate Navigation Menu And Watch DVD During Driving Enable Efficient Dynamics Sport CID (Added Sport Displays The Vehicle Info Screen (Power & Torque Meters)). Disable iDrive Legal Disclaimer During iDrive Startup Select Sports Mode In I-drive Turn On Gasoline Station Alert In Navigator Allow PDC(Park Distance Control) To Indicate Park Distance Disable Daytime Running Lamps Convert kilometers To Miles Increase The FM band Disable Handbrake To Play Videos Disable Reversing Camera Warning Window Video Playing With USB Are Available In 2013 NTB
2	ACSM	Set Seat Belt Alarm To Last 10 Seconds
3	BDC	Allow Car Windows To Roll Up Without Being Disturbed By Door Openings Activate/Deactivate Headlight Washer Set Car's Auto Start/Stop To Start In The Last Used Setting (e.g. Off) When The Engine Is Started
4	CAS	Central Control Unlock Automatically When Engine Is Off Shorten Time To Roll Up Or Down Car Windows Shorten The Time To Fold Down Rearview Mirrors
5	Combox	Voice Recognition Play Videos Add CIC stored addresses/messages from 25 to 50 Microphone Settings Change and Synchronize Incoming Call Ringtones On Bluetooth Device
6	DWA8	Set Lock Alarm Sound To The Maximum
7	FEM	Allow Car Windows To Roll Up Without Being Disturbed By Door Openings Activate/Deactivate Headlight Washer Set Car's Auto Start/Stop To Start In The Last Used Setting (e.g. Off) When The Engine Is Started
8	FKA	AC Records Last Engine-off Statues

#	System	Function
9	FRM	Allow Car Windows To Roll Up Without Being Disturbed By Door Openings Auto Control Of High Beams Extend Foot To Open Rear Cover
10	FZD	Set Lock Alarm Sound To The Maximum
11	IHKA	AC Records Last Engine-off Statues AC Air Circulation Records its Engine-off Statues
12	TCU	Microphone Settings
13	JBBFE	Allow Car Windows To Roll Up Without Being Disturbed By Door Openings Activate/Deactivate Headlight Washer Wiper Resets Automatically Disable Front Camera At Maximum Distance Disable Back Camera At Maximum Distance
14	KOMBI	Display Digital Vehicle Speed
15	PMA	Disable Front Camera At Maximum Distance Disable Back Camera At Maximum Distance Disable Front Camera At Maximum Speed Disable Back Camera At Maximum Speed
16	RADIO	Add Select Sound Effects Of Lock/Unlock In I-drive Operate Navigation Menu And Watch DVD During Driving Disable Daytime Running Lamps Increase The FM band
17	RSE	Add Select Sound Effects Of Lock/Unlock In I-drive Operate Navigation Menu And Watch DVD During Driving Enable Efficient Dynamics Sport CID (Added Sport Displays The Vehicle Info Screen (Power & Torque Meters)). Disable iDrive Legal Disclaimer During iDrive Startup Select Sports Mode In I-drive Turn On Gasoline Station Alert In Navigator Allow PDC(Park Distance Control) To Indicate Park Distance Disable Daytime Running Lamps Convert kilometers To Miles Increase The FM band Disable Handbrake To Play Videos
18	ULF	Voice Recognition 2 Select Bluetooth Phone Ringtone Change and Synchronize Incoming Call Ringtones On Bluetooth Device

Table 2. Personalization function list



## 4. Connection mode

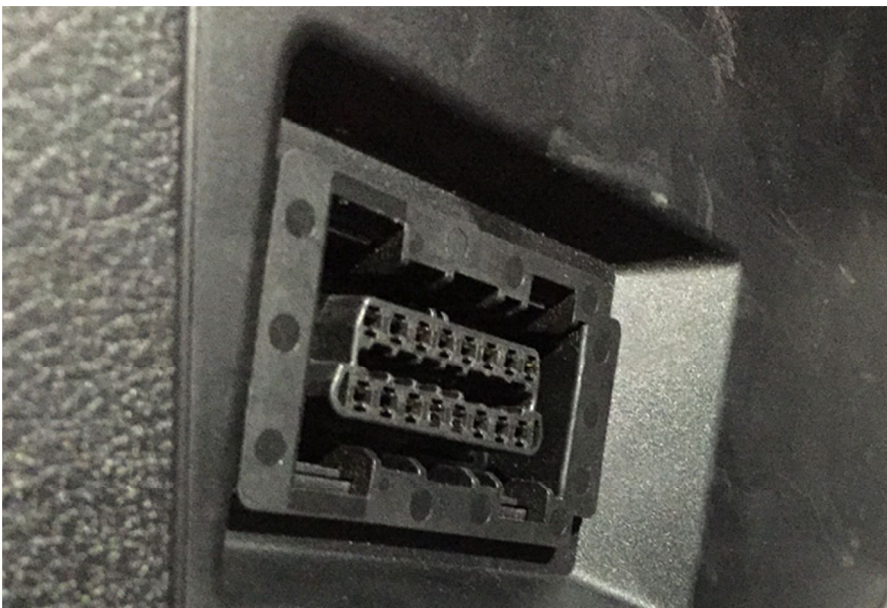
### 4.1 The position of vehicle diagnosis socket

The OBD diagnosis socket is usually below instrument panel in the driving side. For example, the diagnosis socket of BMW 1 series is situated at driver door frame, and the cover is marked “OBD”. When uncovered, you can see OBD diagnosis socket.



Picture1. OBD diagnosis socket of BMW 1 series

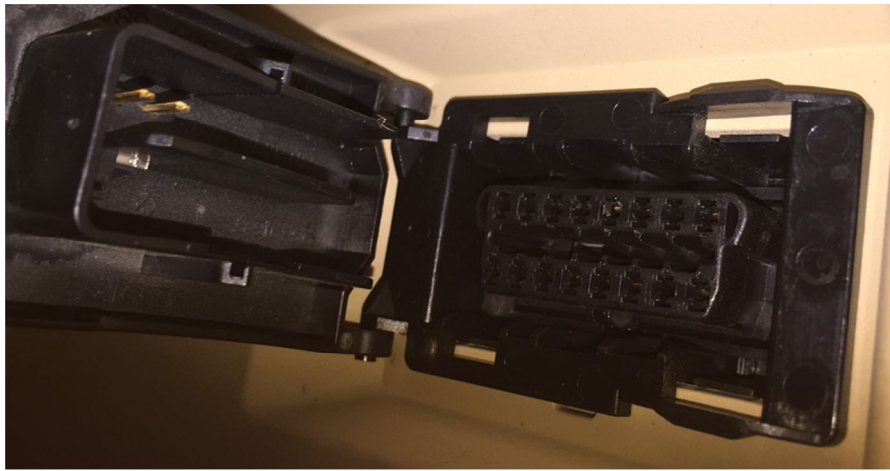
The OBD diagnosis socket of BMW 3 series, BMW 5 series and BMW 7 series is below instrument panel in the driving side.



Picture2. OBD diagnosis socket of BMW 3 series



Picture3. OBD diagnosis socket of BMW 5 series



Picture4. OBD diagnosis socket of BMW 7 series

4.2 Connection mode of ENET

Plug ENET connector into the OBD diagnostic port of the car. The indicating light on the connector will turn on, indicating that the OBD port is providing a stable power supply, as shown in Picture 5. If the light is not on, please check if there is a bad ENET connection. Then connect the networking cable to the ENET connector. Once the connection is built, the EasyCoding software is ready to use.



Picture5. Connection mode of ENET

5. Software operation manual

5.1 Software operating environment

System requirement: WINDOWS operating system, Windows XP SP3, Windows 7, Windows 8.

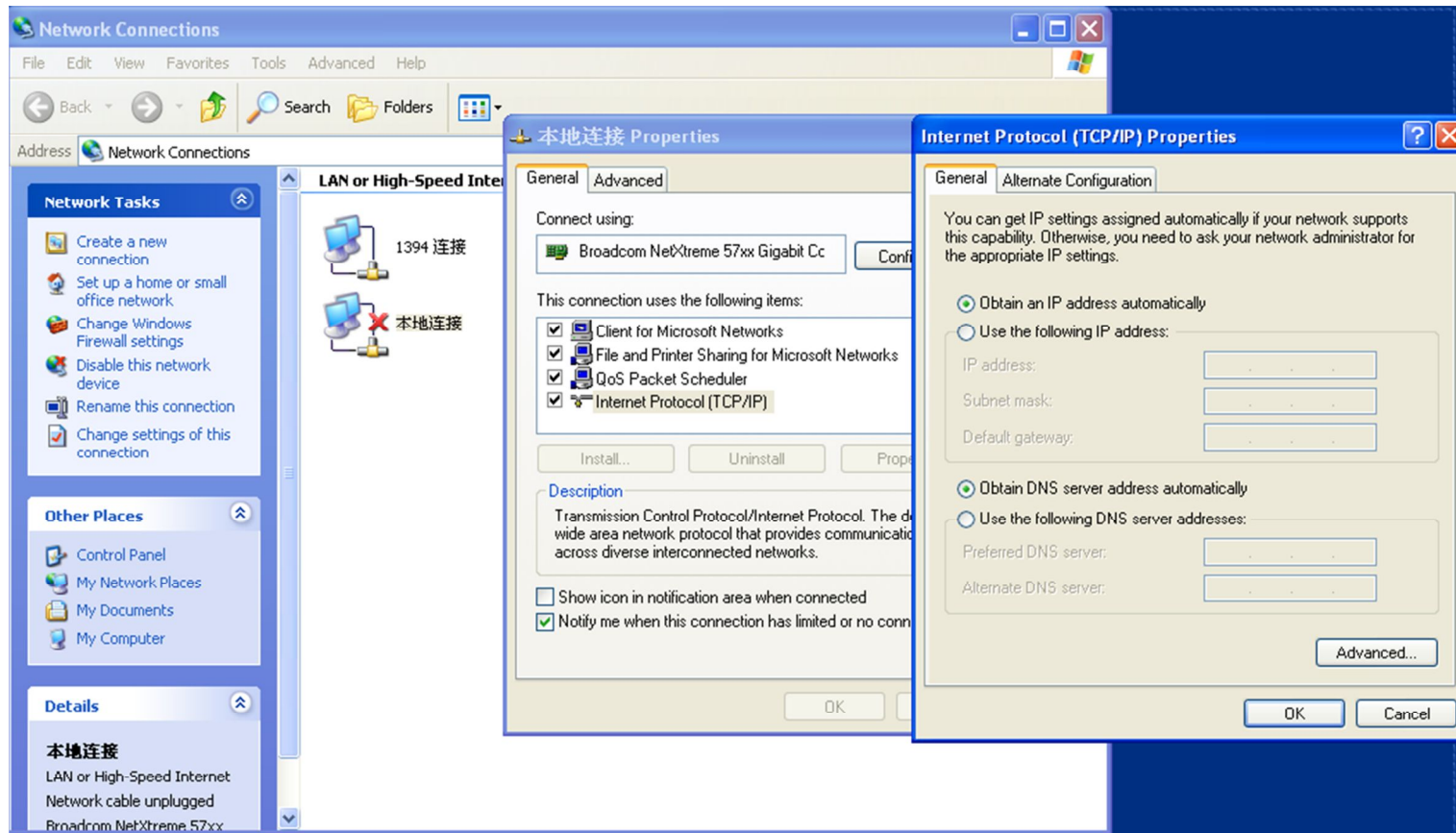
5.2 Vehicle condition

Make sure the vehicle battery is in good condition. The voltage is above 12V, and there is electricity loss. Turn on ignition switch but do not start the vehicle and turn off other electric appliances on the car.



## 5.3 Internet condition

Please check the Cable Network Setting in your computer and configure your computer to obtain an IP address automatically instead of using an assigned IP address.



Picture6

## 6. Operating software

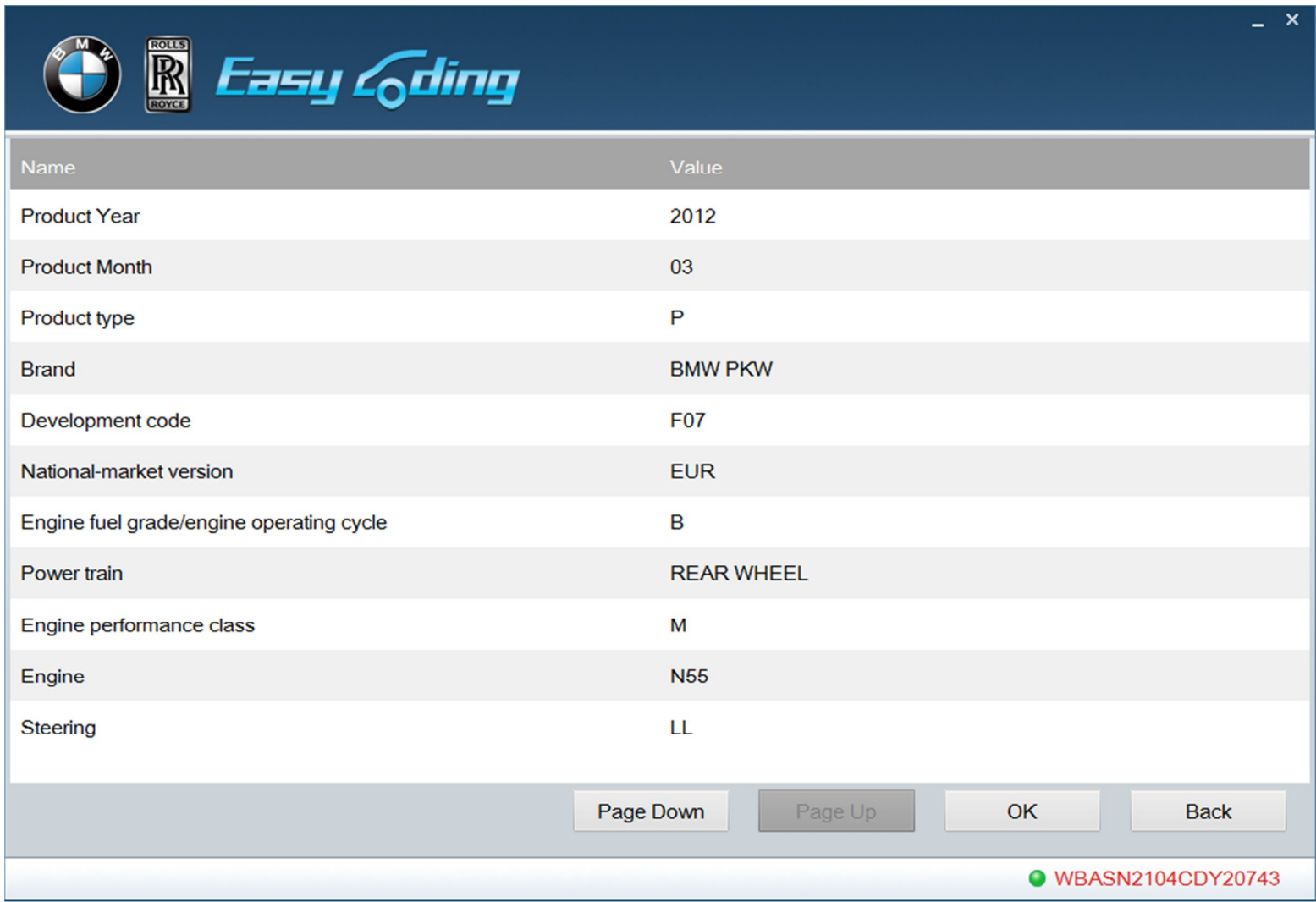
Insert Superdog to the USB interface of your computer. It's unnecessary to install any drive. Double click EasyCoding icon on desktop to operate the software.



Picture7

### 6.1 Diagnostic function

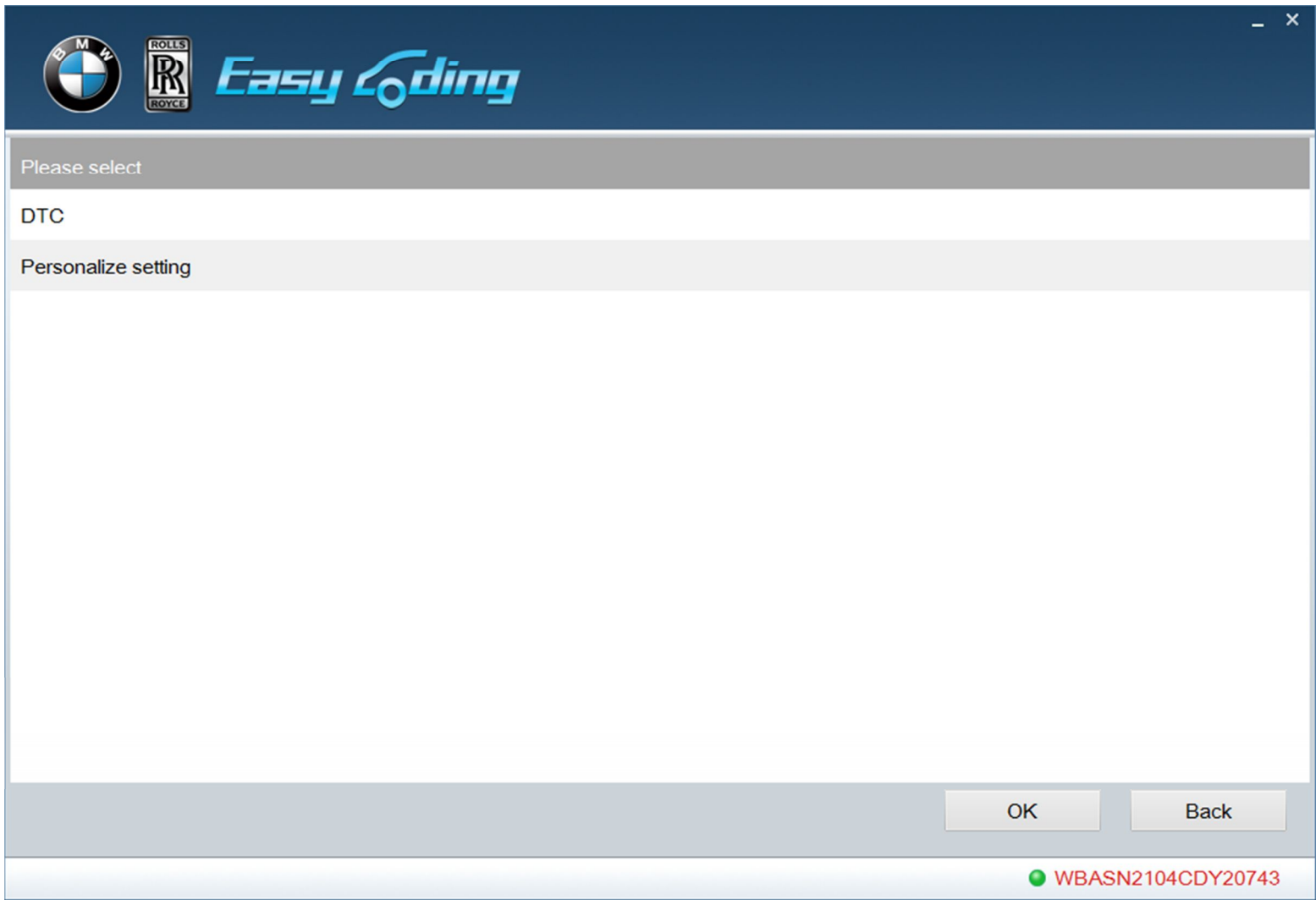
When network status icon on the lower right corner of computer stops circling an exclamation mark appears, you can click the software diagnostic icon.



Picture 8

The software reads vehicle VIN code automatically and displays vehicle information. If the vehicle information is not shown, you need to contact the supplier for the latest vehicle data.

Press [Page Down] to display full vehicle information; Press [Back] can return to previous menu; Press [OK] to entering into Sub-menu.



Picture9

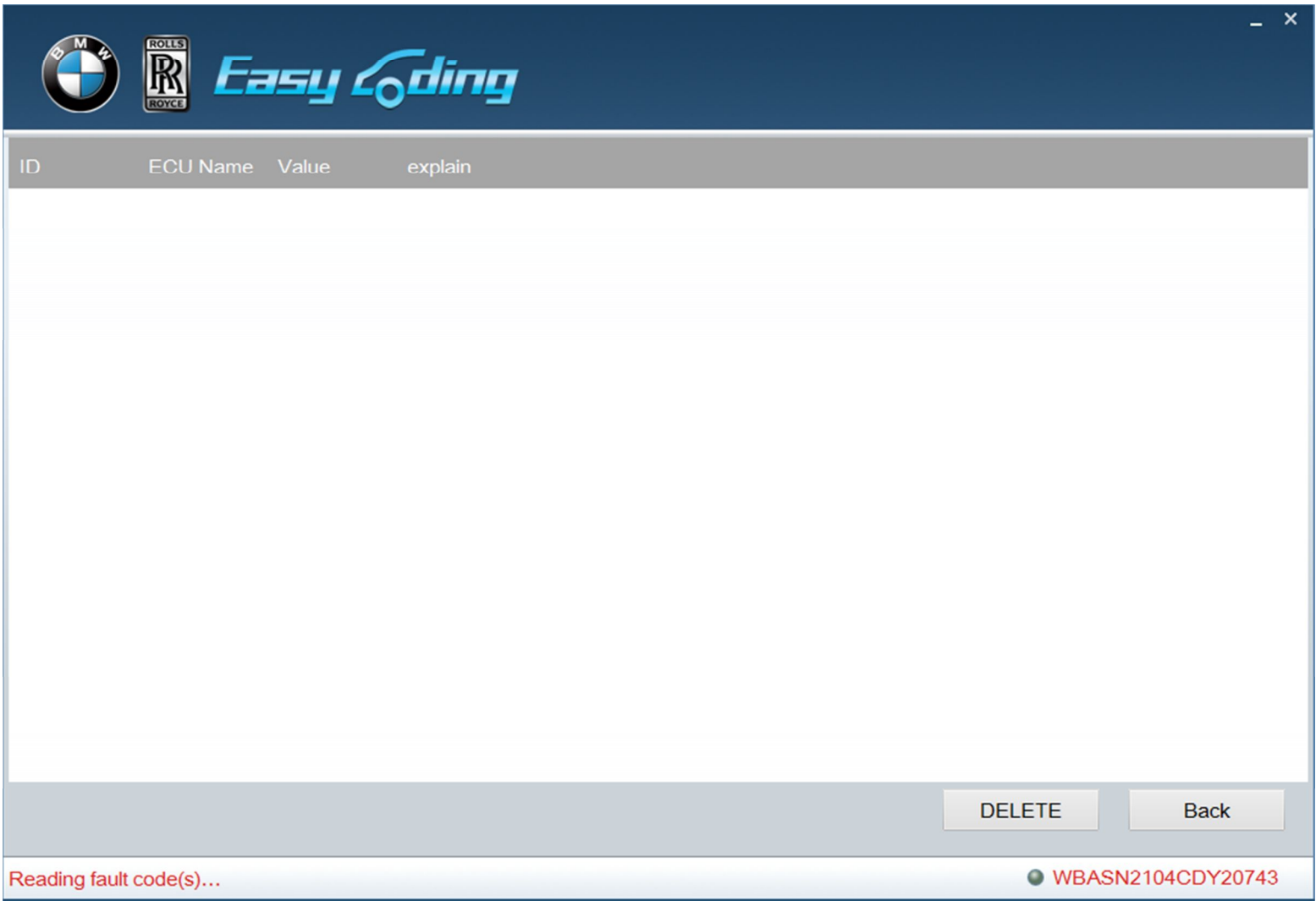
Two major diagnostic functions: “DTC” and “Customization”。

6.2 DTC

The function of diagnosing DTC can scan all DTCs existing in electric system. Please confirm there is no DTC stored before customization. Historical DTCs and sporadic DTCs can be cleared by clearing function, but permanent DTCs indicate DTCs exist in vehicle and can’t be cleared. Please confirm whether further maintenance is needed.

After customization, you can check whether there is DTC information stored in the car. If there is new DTC information, then the customization is not suitable this vehicle. Please restore the modified customization.

Click DTC menu as follows:



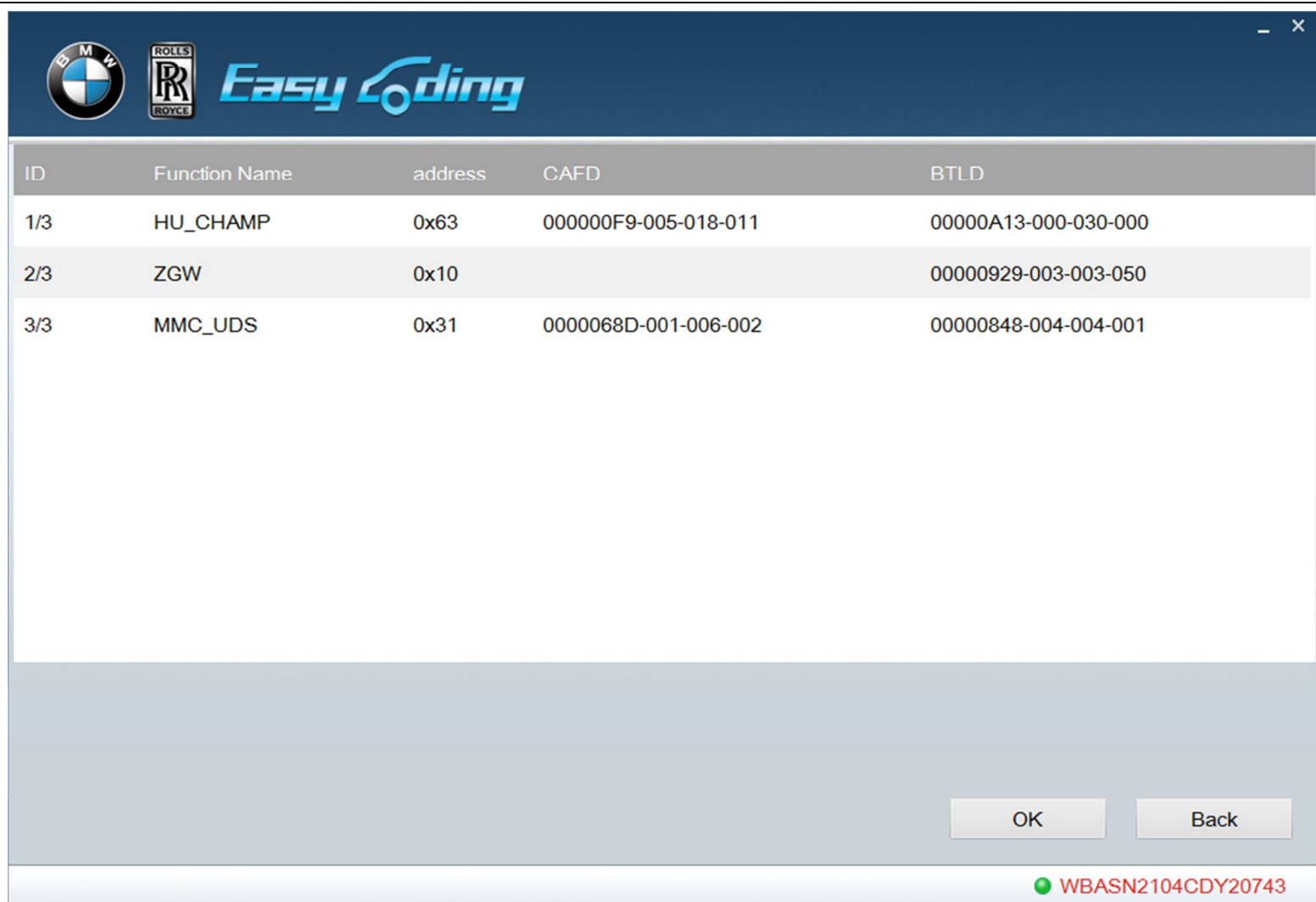
Picture10

Click [Delete] can clear all DTCs. After clearance, click [Back] and operate DTC clearing function again to confirm whether DTC information exists or not.

6.3 Customization

Choose customization menu and click [OK] to entering into customization interface.



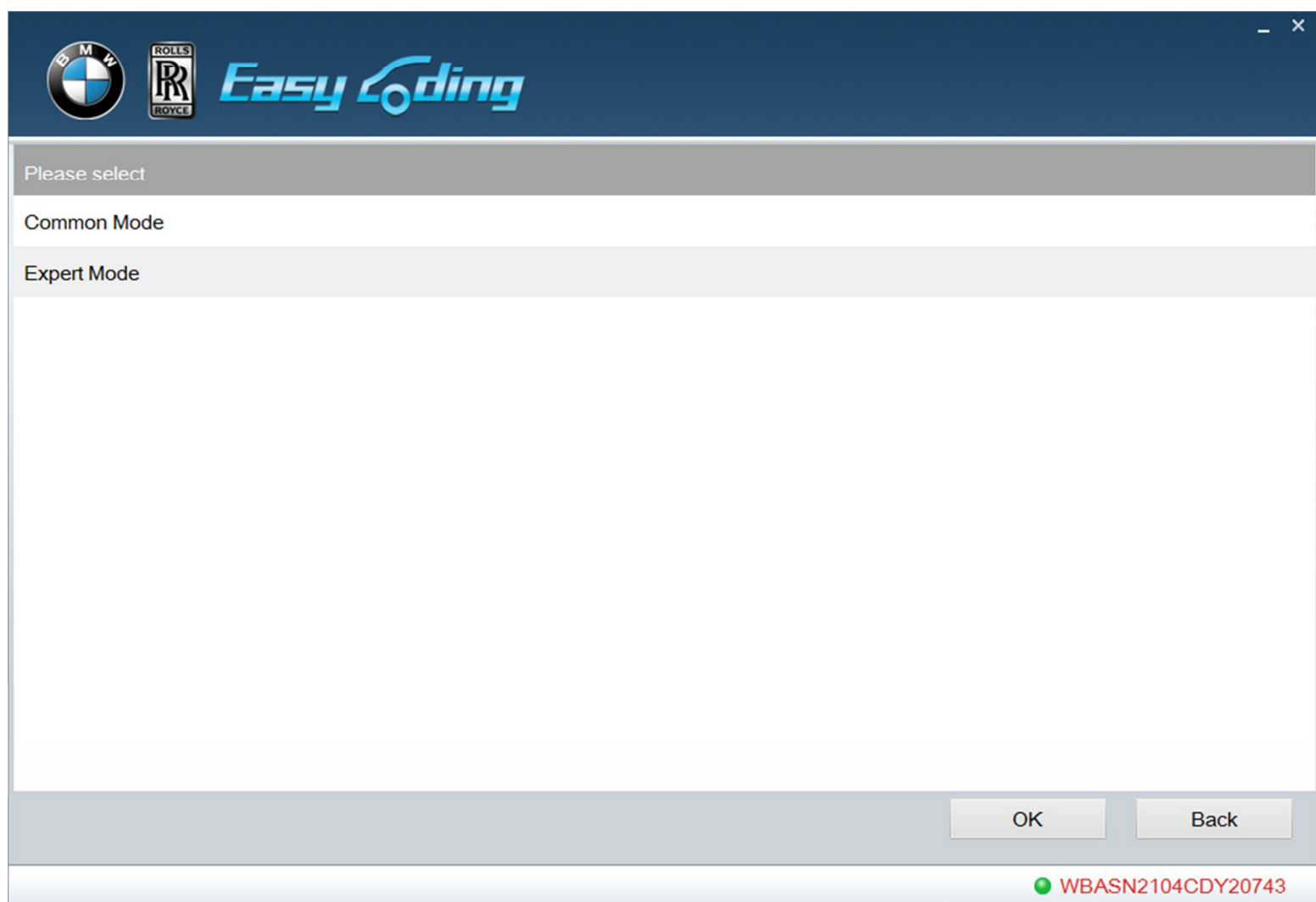


Picture11

This interface is an example of a car which displays all systems.

Note: sometimes the lists may not be complete because of radio communication mechanism. When this happened, please return and reenter into the interface.

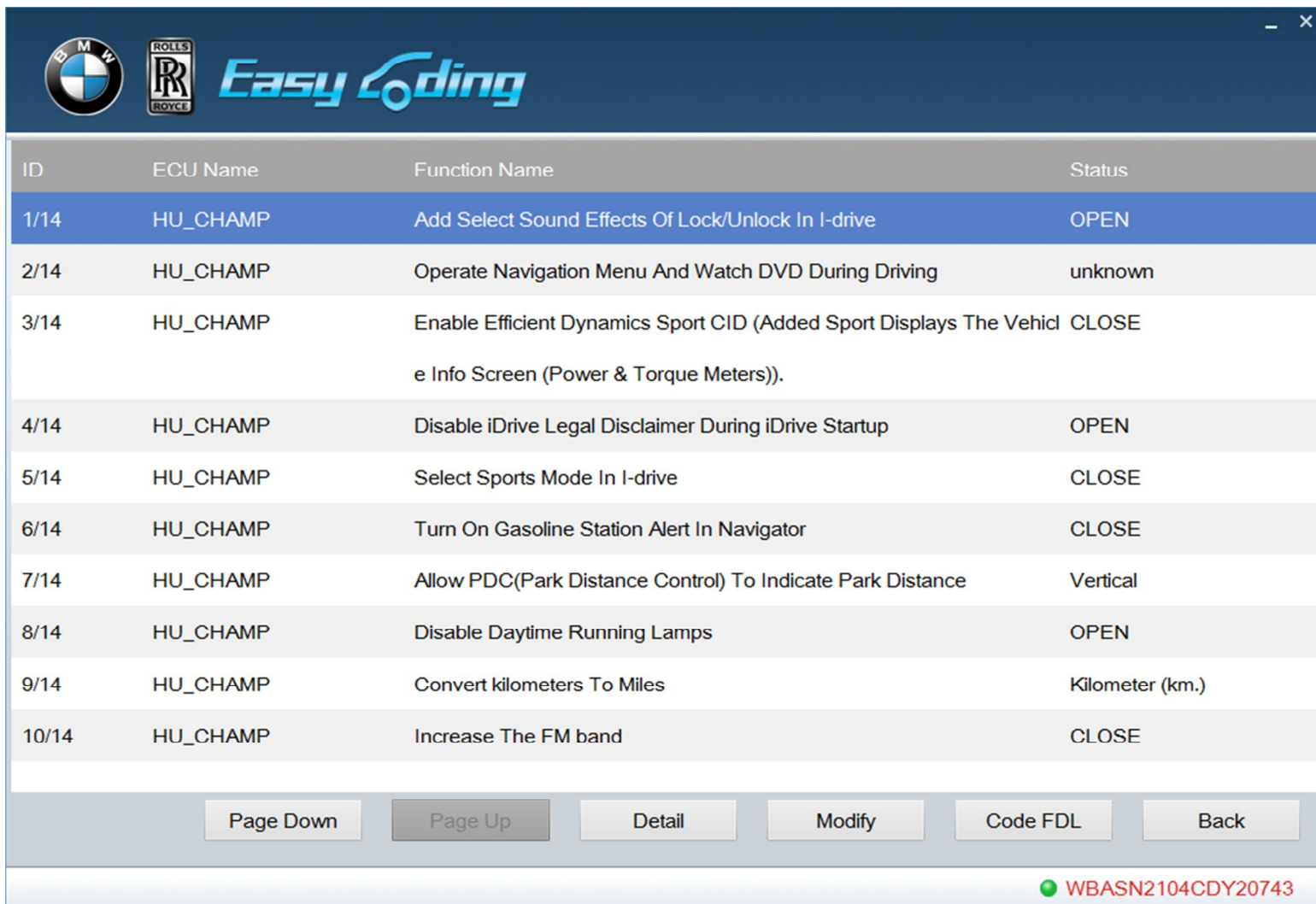
Choose a system. Take HU as an example. Click [OK] to get into mode selection menu.



Picture12

### 6.3.1 Common mode

Click “Common Mode” and the functions that can be modified in the system are shown. You can refer to chart 2: customization chart to select common functions for relevant system according to function lists. Different vehicle models may correspond to different systems.



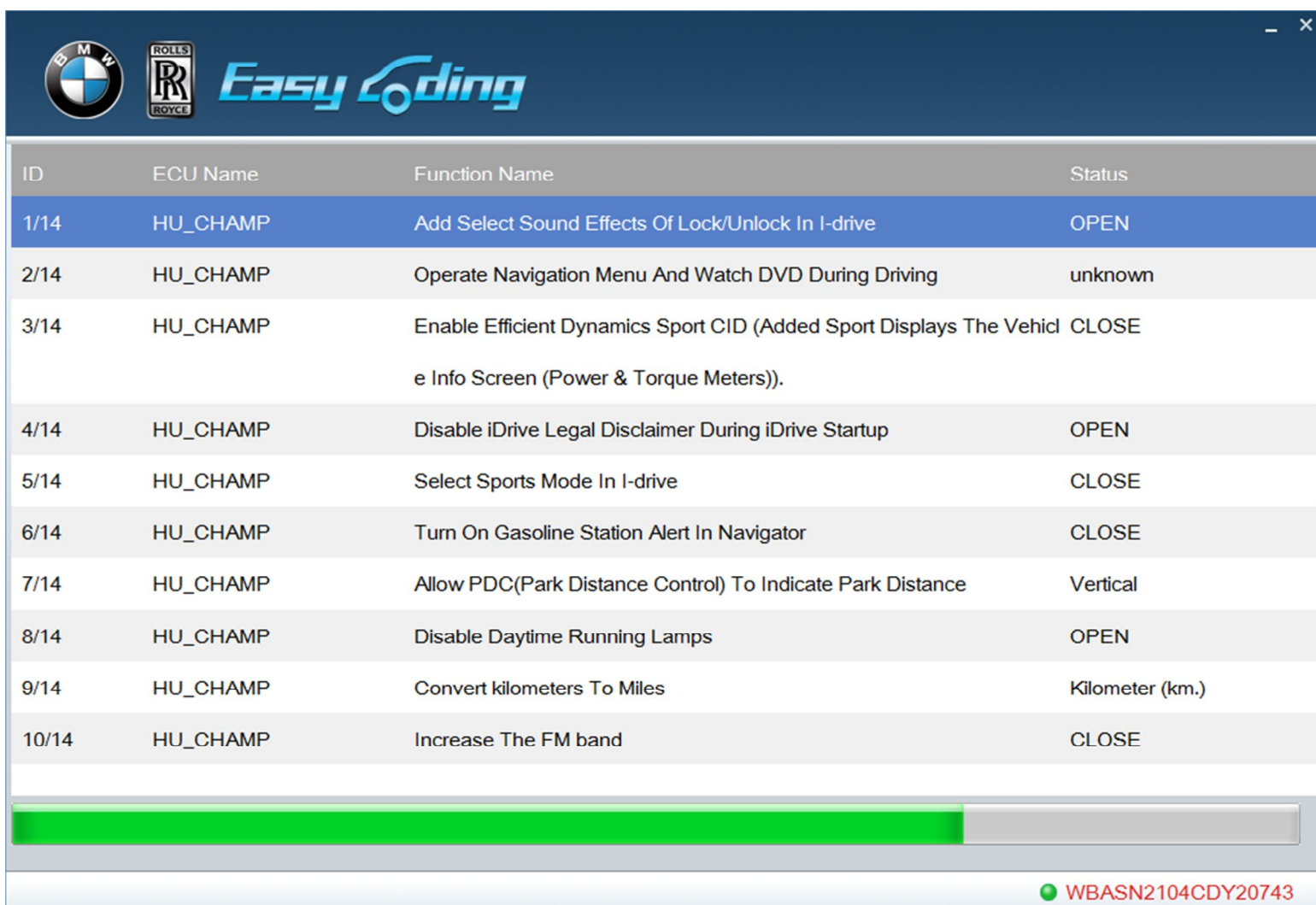
ID	ECU Name	Function Name	Status
1/14	HU_CHAMP	Add Select Sound Effects Of Lock/Unlock In I-drive	OPEN
2/14	HU_CHAMP	Operate Navigation Menu And Watch DVD During Driving	unknown
3/14	HU_CHAMP	Enable Efficient Dynamics Sport CID (Added Sport Displays The Vehicle Info Screen (Power & Torque Meters)).	CLOSE
4/14	HU_CHAMP	Disable iDrive Legal Disclaimer During iDrive Startup	OPEN
5/14	HU_CHAMP	Select Sports Mode In I-drive	CLOSE
6/14	HU_CHAMP	Turn On Gasoline Station Alert In Navigator	CLOSE
7/14	HU_CHAMP	Allow PDC(Park Distance Control) To Indicate Park Distance	Vertical
8/14	HU_CHAMP	Disable Daytime Running Lamps	OPEN
9/14	HU_CHAMP	Convert kilometers To Miles	Kilometer (km.)
10/14	HU_CHAMP	Increase The FM band	CLOSE

Page Down Page Up Detail Modify Code FDL Back

WBASN2104CDY20743

Picture13

Take “Select sound effects of Lock/Unlock in I-drive” as an example to introduce modifying operation in common mode. Click “Select sound effects of Lock/Unlock in I-drive”, and the current state is “close”. Click [Modify] and this function will show “open”. Then click [Code FDL], as shown in picture 14.



ID	ECU Name	Function Name	Status
1/14	HU_CHAMP	Add Select Sound Effects Of Lock/Unlock In I-drive	OPEN
2/14	HU_CHAMP	Operate Navigation Menu And Watch DVD During Driving	unknown
3/14	HU_CHAMP	Enable Efficient Dynamics Sport CID (Added Sport Displays The Vehicle Info Screen (Power & Torque Meters)).	CLOSE
4/14	HU_CHAMP	Disable iDrive Legal Disclaimer During iDrive Startup	OPEN
5/14	HU_CHAMP	Select Sports Mode In I-drive	CLOSE
6/14	HU_CHAMP	Turn On Gasoline Station Alert In Navigator	CLOSE
7/14	HU_CHAMP	Allow PDC(Park Distance Control) To Indicate Park Distance	Vertical
8/14	HU_CHAMP	Disable Daytime Running Lamps	OPEN
9/14	HU_CHAMP	Convert kilometers To Miles	Kilometer (km.)
10/14	HU_CHAMP	Increase The FM band	CLOSE

WBASN2104CDY20743

Picture 14

When code is set, common function is modified successful. But it still needs to be set in “idrive”. The process is shown as picture 15 and picture 16.



Picture 15



Picture 16

Another option in “Door Lock” is added, that is “Sound Effects of Lock/Unlock”. Check this option and you can test the sound effects of lock/unlock. If the sound is too small, you can modify the volume in common mode.

### 6.3.2 Expert Mode

Some functions may require system parameters to be modified or sometimes you may not find the functions you want, in “Common Mode”, then you will need “Expert Mode”. There are posts of opening expert functions in BMW forums. You can modify parameters referring to those posts and modify the functions you want in “Expert Mode”. System name, parameter and reflash hidden code table are the same, but we haven't tested yet.

Click “Expert Mode” to entering into parameter searching interface. The process is shown as picture 17.





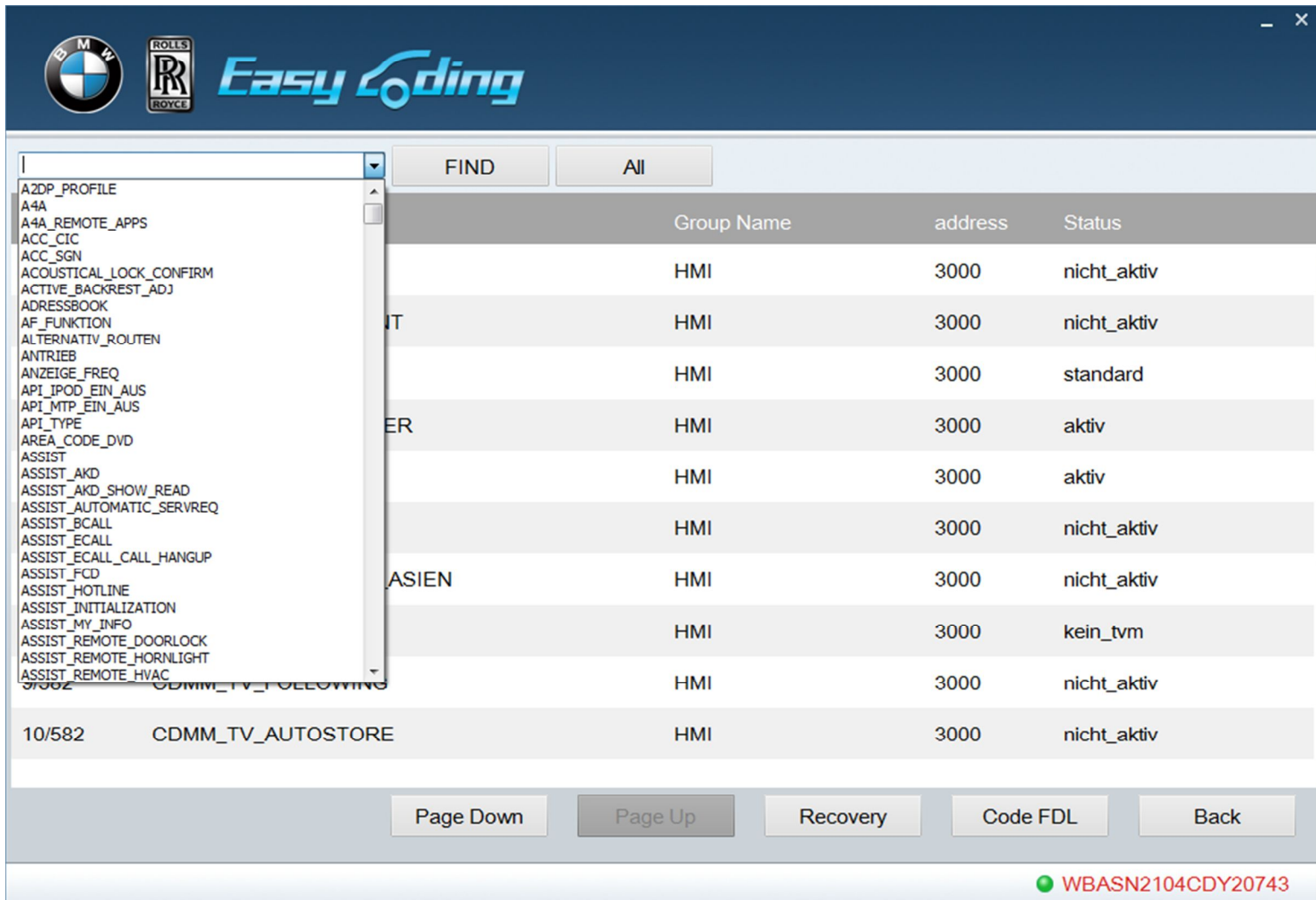
ID	Function Name	Group Name	address	Status
1/582	HDC_CIC	HMI	3000	nicht_aktiv
2/582	HIGH_BEAM_ASSISTANT	HMI	3000	nicht_aktiv
3/582	DAYDRIVING_LIGHT	HMI	3000	standard
4/582	SYSTEM_GPS_RECEIVER	HMI	3000	aktiv
5/582	SERVICE_MENUE	HMI	3000	aktiv
6/582	ENTWICKLER_MENUE	HMI	3000	nicht_aktiv
7/582	ENTWICKLER_MENUE_ASIE	HMI	3000	nicht_aktiv
8/582	TVM_VARIANTEN	HMI	3000	kein_tvm
9/582	CDMM_TV_FOLLOWING	HMI	3000	nicht_aktiv
10/582	CDMM_TV_AUTOSTORE	HMI	3000	nicht_aktiv

Page Down Page Up Recovery Code FDL Back

WBASN2104CDY20743

Picture 17

Please input the desired parameter in input box.



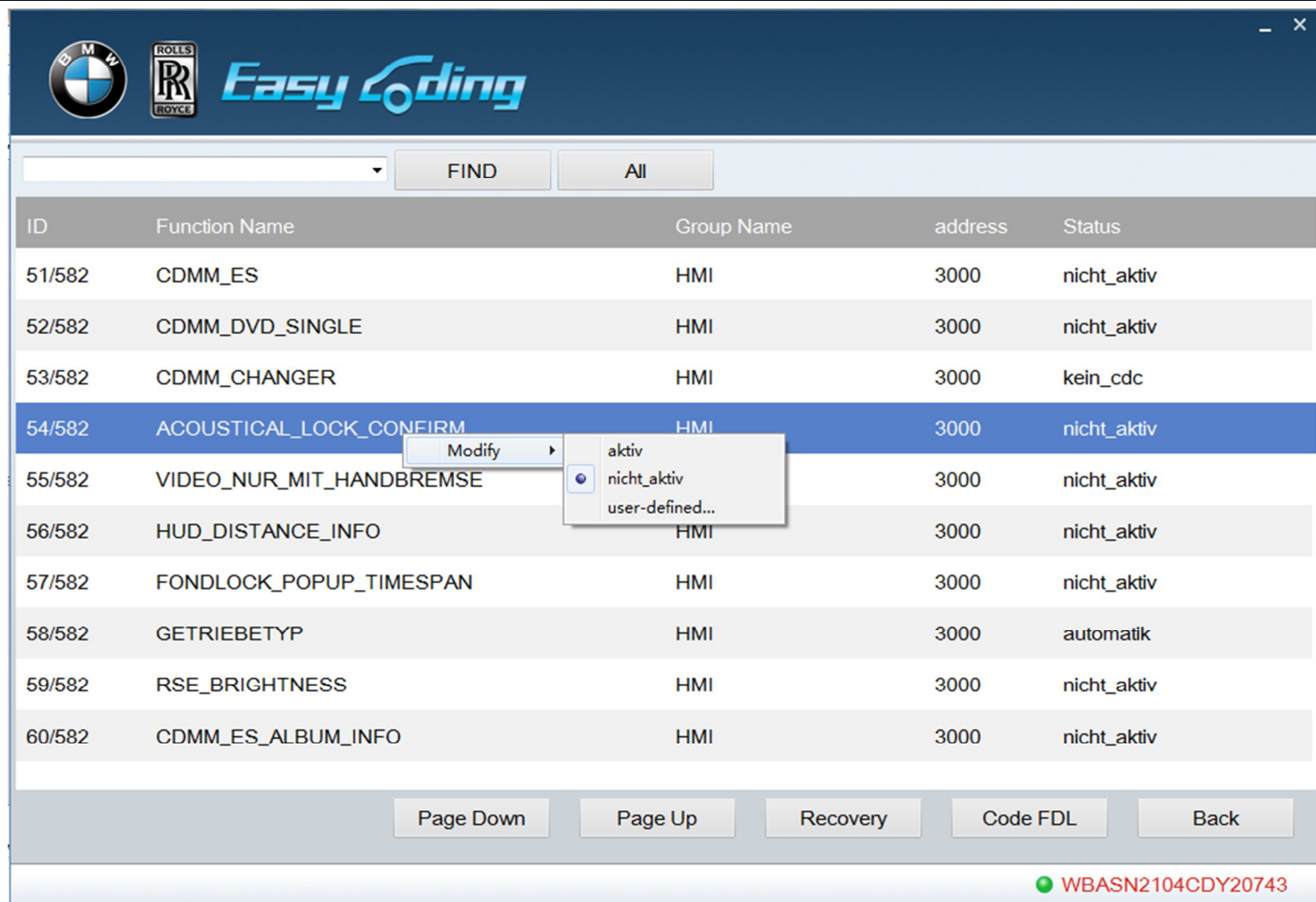
ID	Function Name	Group Name	address	Status
1/582	HDC_CIC	HMI	3000	nicht_aktiv
2/582	HIGH_BEAM_ASSISTANT	HMI	3000	nicht_aktiv
3/582	DAYDRIVING_LIGHT	HMI	3000	standard
4/582	SYSTEM_GPS_RECEIVER	HMI	3000	aktiv
5/582	SERVICE_MENUE	HMI	3000	aktiv
6/582	ENTWICKLER_MENUE	HMI	3000	nicht_aktiv
7/582	ENTWICKLER_MENUE_ASIE	HMI	3000	nicht_aktiv
8/582	TVM_VARIANTEN	HMI	3000	kein_tvm
9/582	CDMM_TV_FOLLOWING	HMI	3000	nicht_aktiv
10/582	CDMM_TV_AUTOSTORE	HMI	3000	nicht_aktiv

Page Down Page Up Recovery Code FDL Back

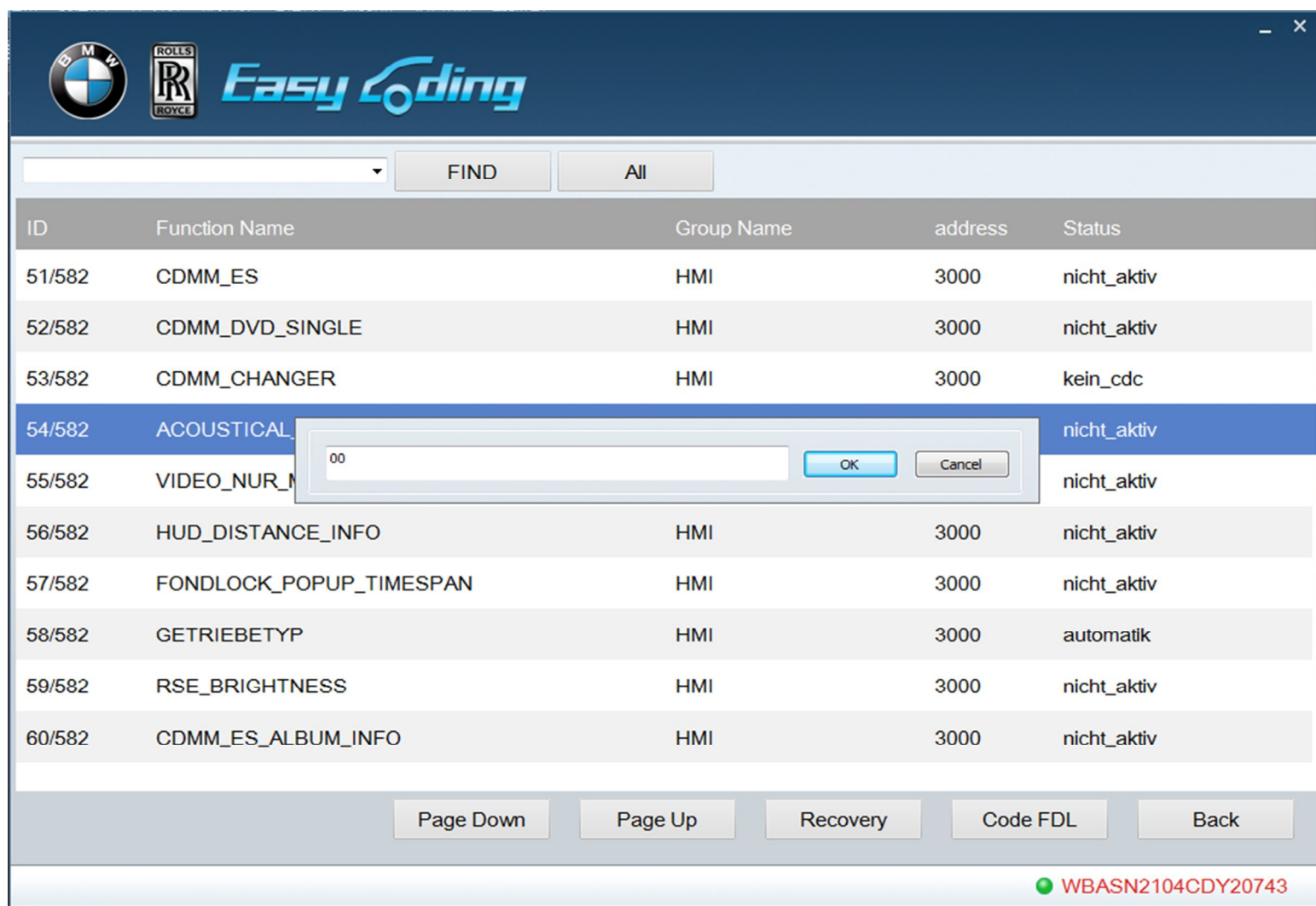
WBASN2104CDY20743

Picture 18

Find the desired parameter, and click the parameter line with left mouse button. As shown in picture 19, there are 3 options, choose the desired state or input customized value.



Picture 19



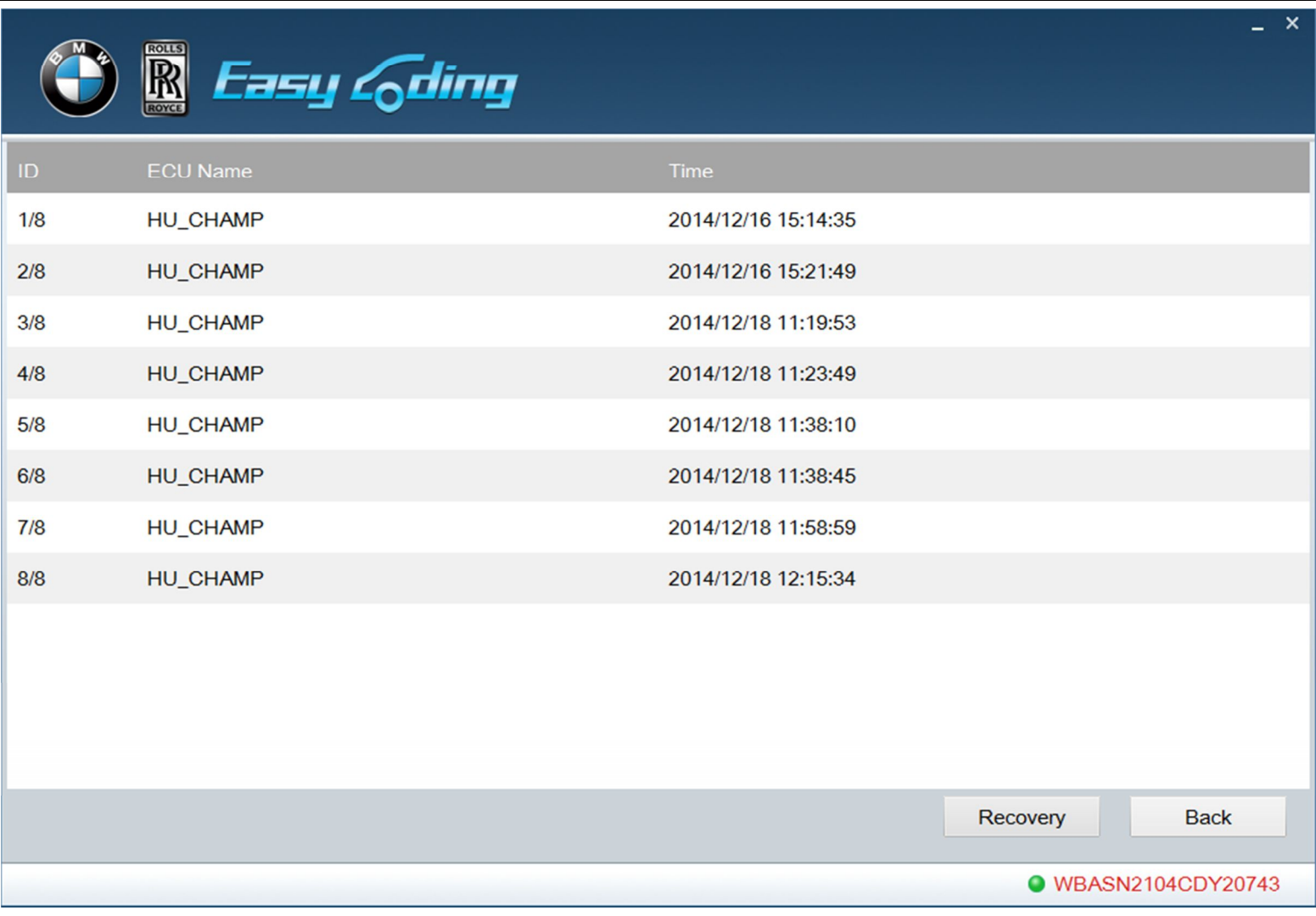
Picture 20

After change setting, click "Code FDL"

Note: "Custom" default uses the hexadecimal format, for example, decimal 1 equals to hexadecimal 0x01, you can enter 0x01 or 01; decimal 10 equals to hexadecimal 0x0A, you can enter 0x0A or 0A.

Expert Mode also provides "Recovery" function. If any fault code is generated when modifying certain system parameter and the code cannot be erased, that indicates this function is not available for your car. By this time you need to use recover function, it can restore your vehicle the raw data. Generally, choose the earliest system parameter to recover, see Picture 21.





Picture 21

7. Options

This function is used to display software version and to select languages.

8. Registration

Registration is not needed for this version.

9. Upgrading

Online upgrading is not supported at present. Please pay attention to upgrading information on [www.euseauto.com](http://www.euseauto.com). There are at least 3 upgrades each year, including vehicle model database, code setting database, new common function settings and software optimizing.

10. Help

Click “Help” to entering into help interface and to guiding you operate the software correctly.

11. Service

11.1 Guarantee clause

One-year free replacement for the hardware of EasyCoding and two-year free upgrade for EasyCoding.

11.2 Feedback

You can send any question or advice to the email, [euseauto@g163.com](mailto:euseauto@g163.com).