

Caution: To ensure correct and safe use of the products, make sure that you also read the Operating Instructions on DVD carefully prior to operation.



BRAINVISION standard **V-AMP Set Up**

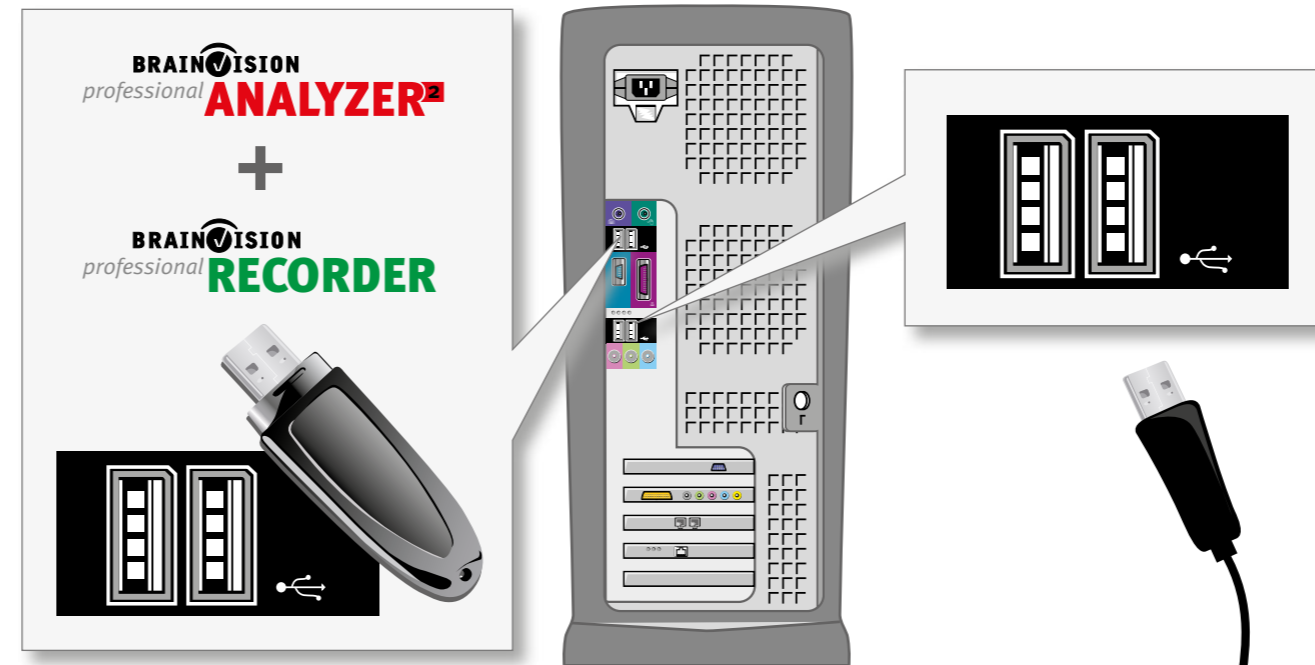
1



Installing the software:
Insert the Brain Products Application Suite and install the Recorder and Analyzer 2 as described in the User Manual. **Important:** Leave the DVD in the drive while installing the hardware. The readme file contains important information about software installation.

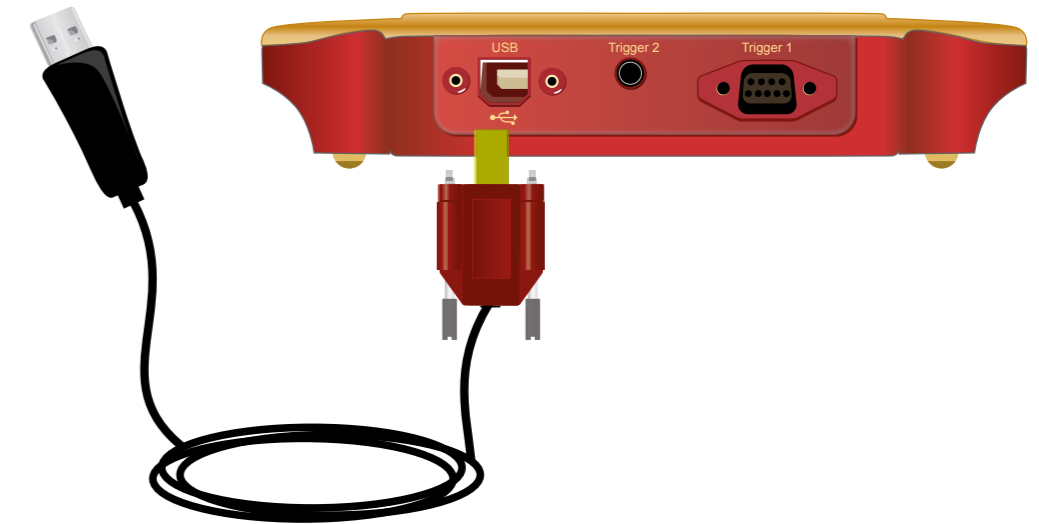
2

Installing the dongle:
Plug in the USB dongle. Windows will install the driver automatically. Follow the instructions. When installation is complete, the dongle will light up.



3

Installing the amplifier (V-Amp):
Use the USB cable to connect the amplifier to your computer. Windows will detect the new hardware and install it automatically. Follow the instructions.



4

Connecting the electrodes:
Connect EasyCap electrodes and our sensors for peripheral signals to the front panel. **Important:** Make sure your cap connector fits the pinout of your amplifier. Refer to the manual.

