

# KAMADO JOE GASJOE

## LP to NG Conversion Instructions

Change out kits for GasJoe models (GJ26, GJ32S, GJ38S)

### Installation Advisory

To prevent personal injury or damage to the grill, a licensed, authorized, service technician or contractor must perform the installation. Installation must be done in accordance with the installation instructions included with this product.

### Tools Needed

1. 6mm Wrench 2. (2)19mm Wrenches 3. Phillips Screwdriver 4. Flathead Screwdriver

### Parts Identification



#### Main Burner Orifice

NG- $\Phi$ 1.93mm

GJ26 (2 pcs)  
GJ32S (2 pcs)  
GJ38S (3 pcs)



#### Sear Burner Orifice

NG- $\Phi$ 1.78mm

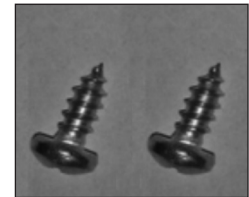
GJ26 (0 pcs)  
GJ32S (1 pc)  
GJ38S (1 pc)



#### All Models: NG Regulator (1 pc)



#### All Models: 1/2 NPT x 5/8 Flare Fitting (2 pcs)



#### All Models: (2) Screws for Regulator



**KAMADOJOE**<sup>®</sup>

Ignite your passion for grilling.<sup>™</sup>



GasJoe Specifications

## GasJoe LP to NG Conversion Instructions

### Step 1

#### (Change Main Burner Orifice)

Remove all cooking grates and burner covers.



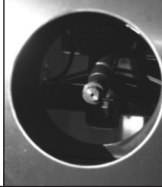
### Step 2

Unscrew the secure nut on the burner end. Lift burner end up and remove.



### Step 3

Locate the valve with orifice in the hole on front basin. Use a 6mm box wrench to gently loosen the LP orifice.



### Step 4

Install the NG orifices ( $\Phi 1.93\text{mm}$ ) and gently tighten. DO NOT over tighten.



### Step 5

Reinstall main burner and tighten the nut on the back.



### Step 6

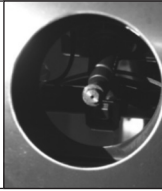
#### (Change Sear Burner Orifice)

Remove the sear burner using steps 1 and 2.



### Step 7

Change the sear burner orifice using steps 3 and 4. Use the correct size orifice ( $\Phi 1.78\text{mm}$ ).



### Step 8

Reinstall the sear burner back into the basin and tighten the nut on the back.



### Step 9

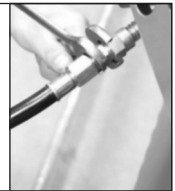
#### (Change Regulator)

Remove fixed bracket holding the end of flex tube on back of grill.



### Step 10

Remove the LP regulator fitting using two 19mm wrenches.



### Step 11

Preassemble the NG regulator with a fitting on both ends. Sealant may be needed to prevent leaking.



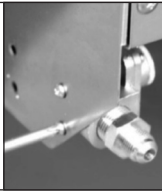
### Step 12

Attach NG regulator to flex tube and tighten firmly. See regulator bottom for correct flow direction.



### Step 13

Attach the regulator to the side panel of the grill using the two 4.2mm screws provided.



### Step 14 (Leak Test)

Connect grill to gas supply and refer to User Manual pages 14 and 15 for leak test procedure.



### Step 15

#### (Fire Test/Low Flame Setting)

Refer to User Manual page 16 for fire test and low flame setting procedures.

