



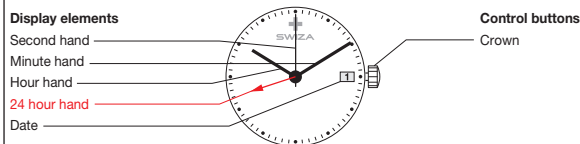
## User's manual SWIZA SiriuZ GMT

### Congratulations!

Your SWIZA SiriuZ GMT watch is equipped with a Swiss Made quartz movement. This movement has been meticulously designed and manufactured with the highest quality materials and components to protect it against shock, variations in temperature, water and dust.

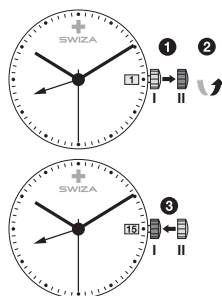
To ensure that your watch operates with perfect precision, please carefully read and adhere to the instructions included here.

### Description of the display and control buttons



### Quick-change correction for date

- 1 Pull the crown out to position II (watch still running)
- 2 Turn the crown clockwise until the required date appears
- 3 Push the crown back into position I

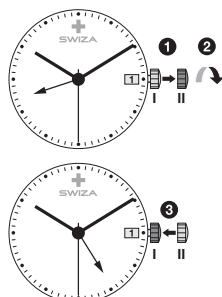


#### Please note

The date can also be corrected during the day-changing phase between 10 pm and midnight. The date of the following day has to be set, because no automatic date change takes place at midnight.

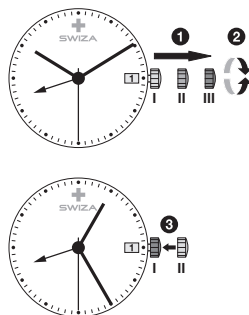
### Quick-change correction for 24-hour display

- 1 Pull the crown out to position II (watch still running)
- 2 Turn the crown anticlockwise until the desired time appears
- 3 Push the crown back into position I



### Setting the time

- 1 Pull the crown out to position III (watch stopped)
- 2 \*Turn the crown until the current time is displayed
- 3 Push the crown back into position I



#### Please note

\*Please observe the 24-hour cycle

