

# CHIAPPA firearms

## M4-22 Upper & mfour-22

### INSTRUCTION MANUAL



1

**ATTENTION: BEFORE REMOVING THIS FIREARM FROM ITS PACKAGE READ & UNDERSTAND WARNINGS, INSTRUCTIONS AND PRECAUTIONS IN THIS USER'S MANUAL**

#### Official Sponsor



**INDEX**

<i>Warnings</i>	3
<i>Safety rules</i>	4
<i>Range of models</i>	6
<i>Instructions for use</i>	7
<i>Ammunition</i>	7
<i>Manual safety</i>	9
<i>Assembly</i>	10
<i>Loading</i>	11
<i>Firing</i>	12
<i>Unloading</i>	13
<i>Clearing misfires</i>	13
<i>Sight adjustment</i>	13
<i>Disassembly</i>	15
<i>Cleaning</i>	15
<i>Ordinary and extraordinary maintenance</i>	15
<i>Troubleshooting tips</i>	17
<i>Exploded views and parts lists</i>	19
<i>Warranty</i>	25

## WARNINGS

**PLEASE BE AWARE THAT THE CONVERSION KIT IS NOT A WEAPON. HOWEVER, ALL SAFETY RULES THAT APPLY FOR THE USE OF Mfour COMPLETE RIFLE ARE VALID FOR THE M4 UPPER RECEIVER AS WELL.**

Kimar/ Chiappa Firearms is not responsible for damage to objects caused by misuse of the gun or for injuries to persons or animals, or in case of death, caused voluntarily or involuntarily by the gun user.

Kimar/ Chiappa Firearms is not responsible for injuries caused by poor maintenance, misuse of the gun, unauthorized or improper modifications.

Kimar/ Chiappa Firearms declines responsibility for the indirect consequences of any injuries and / or death of persons or animals, damage to objects caused by use of the gun or by primer explosion, by bullet's ricochet, or unsafe loading practices and / or procedure.

The complete and full knowledge of your firearm may help you to avoid serious injuries due to lack of safety devices.

Read the entire manual and learn the proper use of the gun without live ammunition. It is important that you understand the proper use of this product. The life of the people close to you may depend on your safety.

If the manual is not clear, please contact the dealer where you bought the gun or call the distributor or the manufacturer by using the contact information provided within this manual.

All our guns are tested in the Armi Sport/ Chiappa Firearms facility. To guarantee the gun is safe, it is sent to the National Proof House of Gardone Val Trompia – BRESCIA – ITALY - for proof testing.

The Proof House tests the firearm with heavy loads then checks the barrel, chamber and headspace to make certain the firearm is safe for use with standard factory ammunition.

The National Proof House will put their markings on the gun, according to the Italian law, certifying the gun is qualified and can be sold.

***THE COURT OF BRESCIA - ITALY, WILL SETTLE ALL DISPUTES***

## SAFETY RULES

1. Read the instructions carefully before use. Reading the manual and a careful examination of the gun are fundamental to avoid any kind of problem.
  2. Be aware that you are handling a firearm; therefore your knowledge and behaviour may affect your life and those of the people close to you.
  3. Guns and ammunitions must be kept in different places
  4. **ALWAYS** keep guns and ammunitions out of reach of children.
  5. Store the gun in a clean dry and airy place after use to avoid rust in mechanical parts that may cause serious problems in functioning after a period of inactivity.
  6. The gun must **ALWAYS** be stored unloaded, **ALWAYS** check that the chamber is empty.
  7. Keep away from open flame or heating sources.
  8. Never leave a loaded gun unattended.
  9. Never leave the weapon loaded and with a closed breech block, it could fall and cause injury and death. Always point the gun in a safe direction, and handle it as though it were loaded. This is especially important when loading and unloading the gun, and when handing it to someone else. Never take someone's word that it is unloaded. Always make sure the gun is unloaded before laying it down or handing it to someone else.
  10. After use, clean and lubricate the inside of the barrel with appropriate oil. Avoid grease or oil build up that can cause excessive pressure and result in serious personal injuries. Before using the gun again, inspect the barrel and chamber to make certain that there are no obstructions in the bore. Remove any oil residue with rod and dry patch before shooting.
  11. Accumulation of rust in the barrel can cause excessive pressures resulting in serious injury and may cause the explosion of the barrel. A rusted, pitted or eroded barrel should be replaced.
  12. Wash hands thoroughly after shooting and handling firearms to remove any unwanted residues.
  13. Being this firearm is a replica of original design, there is no modern safety. Pay great attention during transportation and use. Mechanical safety devices can fail. Developing intelligent, good safety habits is the best way to prevent accidents.
  14. The only safety is the hammer half cock, read chapter on firearms use. REMEMBER: No mechanical safety device is infallible.
  15. **ALWAYS** keep the gun unloaded when transporting it from home to the shooting areas. Carefully check that cartridge chamber is empty.
  16. When you walk around with the gun in a shooting area, ALWAYS keep the muzzle pointed in a safe direction.
  17. NEVER run with a loaded gun, don't cross any obstacle (fences or water courses, etc.) or walk where there is any possibility of slipping or falling without having your firearm unloaded and in safety position.
  18. Do not smoke while handling, loading or shooting any ammunition, especially black powder. Keep black powder in a closed container at all times, reclosing the container after each and every use.
  19. Never drink alcoholic beverages or take any drugs before or during shooting, as this not only constitutes criminal disregard for your safety and that of others, but will seriously impair your judgment and vision. Never use a gun while you are taking medication unless you have checked with your doctor to ensure your fitness to handle the gun safely.
  20. Never rest your finger on the trigger until the very moment you wish to shoot. Always keep the safety on until you are ready to safely shoot at an intended target (see safety features).
- Note: Safety devices on guns are extras and are not a substitute for your proper and safe handling practices.
21. Always wear and encourage others near you to wear proper ear protection when shooting, especially on a range since the noise from your gun, and other guns close to you, could result in permanent hearing loss.
  22. Always wear protective shooting glasses to protect your eyes from injury by gun powder, gas, lubricant, dirt or metallic particles, carbon residue, sparks or other debris.
  23. Use exclusively factory loaded ammunition of the caliber specified on the firearm barrel. Use of different calibers may cause serious personal injuries to you and to people close to you.
  24. Before shooting ALWAYS check to ensure that the barrel is free of obstructions.
  25. When selecting a place to shoot, always be absolutely sure of your target and the area behind it before you touch the trigger, making sure there is an adequate backstop which will stop and contain bullets. A bullet can travel through or past your target up to 1 1/2 miles. If you have any doubt, do not shoot.
  26. Keep all bystanders behind you, standing beside a shooter is not a safe position. Make sure all other shooters and bystanders are well away from the ejection port.

27. Never shoot against a solid surface or in a pool of water, the projectiles could ricochet and shoot toward any direction. Don't shoot up into the sky.
28. Never force a jammed action. It could bring to explosion of the round and consequent injury.
29. In case of misfire, manually extract the cartridge from the chamber. If firearm fails to fire when trigger is pulled, as a result of slow primer ignition (hangfire), keep muzzle pointed downrange for a minimum of 30 seconds. If the round does not fire, remove the magazine, clear the weapon and examine the ejected, unfired cartridge. If the indent from the firing pin is off center, light or absent, take the gun to a competent gunsmith. If the indent appears normal compared to other rounds, assume a faulty round, separate from other cartridges, reload and continue shooting.
30. Do not attempt to re-use unexploded ammunitions.
31. NEVER modify any parts of your gun. Any alteration may cause serious personal injury and voids the warranty.
32. Only a qualified gunsmith may service the gun for repair or serious maintenance.

Armi Sport decline any responsibility for misuse of the firearm.

In case of alteration of the firearm, Armi Sport declines any civil and penal responsibility and will not refund any damage.

**The user is responsible for injuries or damages caused to him or to other persons.**

COMPLETE KNOWLEDGE OF YOUR FIREARM CAN MAKE THE DIFFERENCE.

**QUALITY INSPECTION: Every firearm is thoroughly inspected for function and cosmetic blemish prior to shipment**



Armi Sport is proud to offer the following

### M4-22 UPPER CONVERSION KIT MODEL RANGE:

MODEL	CALIBER	Barrel length		Total length		Weight		No. of shots	Finish	Market
		IN	CM	IN	CM	GR	LBS			
500.061	22LR	16"	40,64	19	49	1680	3,70	5	Black	Europe
500.067	22LR	16"	40,64	19	49	1680	3,70	10	Black	Europe
CF500.058	22LR	16"	40,64	19	49	1680	3,70	10	Black	USA
500.068	22LR	16"	40,64	19	49	1680	3,70	28	Black	Europe
CF500.057	22LR	16"	40,64	19	49	1680	3,70	28	Black	USA

### Mfour-22 COMPLETE CARBINE MODEL RANGE:

MODEL	CALIBER	Barrel length		Total length		Weight		No. of shots	Finish	Market
		IN	CM	IN	CM	GR	LBS			
500.062	22LR	16"	40,64	34,25"	87	1680	3,70	5	Black	Europe
500.065	22LR	16"	40,64	34,25"	87	1680	3,70	10	Black	Europe
CF500.069	22LR	16"	40,64	34,25"	87	1680	3,70	10	Black	USA
500.066	22LR	16"	40,64	34,25"	87	1680	3,70	28	Black	Europe
CF500.063	22LR	16"	40,64	34,25"	87	1680	3,70	28	Black	USA
500.064F	22LR	16"	40,64	34,25"	87	1680	3,70	28	Black	France

### Mfour-22 PISTOL RANGE:

MODEL	CALIBER	Barrel length		Total length		Weight		No. of shots	Finish	Market
		IN	CM	IN	CM	GR	LBS			
CF500.072	22LR	6"	15,2	14 ½"	37	1000	2,2	10	Black	USA
CF500.071	22LR	6"	15,2	14 ½"	37	1000	2,2	28	Black	USA

## **INSTRUCTIONS FOR USE**

### **Ammunition**

**ATTENTION: For best performance of the M4-22 we recommend the use of quality .22 LR ammunition high velocity**

**Please allow 100-150 rounds for initial "Break-In" period**

#### **NOTICE**

WE SPECIFICALLY DISCLAIM RESPONSIBILITY FOR ANY DAMAGE OR INJURY WHATSOEVER OCCURRING IN CONNECTION WITH, OR AS THE RESULT OF, THE USE OF FAULTY, OR NONSTANDARD, OR "REMANUFACTURED" OR HANDLOADED (RELOADED) AMMUNITION, OR OF CARTRIDGES OTHER THAN THOSE FOR WHICH THE FIREARM WAS ORIGINALLY CHAMBERED.

- Death, serious injury, and damage can result from the use of wrong ammunition; bore obstructions, powder overloads, or incorrect cartridge components.
- Use only ammunition specifically recommended for your firearm (Proper Ammunition specified on barrel and cylinder).
- Always use cartridges whose length is equal or inferior to that indicated on the barrel.
- Use only high quality, original factory manufactured ammunition whose pressure cannot be higher than the one rated by S.A.A.M.I. or C.I.P.
- For best results, we recommend the use of jacketed round nose ammunition
- Your gun has been designed for ammunition of a specific caliber – do not alter the barrel, chamber, caliber for which your gun was designed.
- Be sure you never mix ammunition.
- Firearms may be severely damaged, and serious injury to the shooter or others may result from any condition causing excessive pressure inside the chamber or barrel during firing. Excessive pressure can be caused by obstruction in the barrel, propellant powder overloads, or by the use of incorrect or defectively assembled cartridges. In addition, the use of a dirty, corroded or damaged cartridge can lead to a burst cartridge case and consequent damage to the firearm and personal injury from the sudden escape of high-pressure propellant gas within the firearm's mechanism.
- Immediately stop shooting and check the barrel for a possible obstruction whenever:
  - You have difficulty in, or feel unusual resistance in chambering a cartridge
  - A cartridge misfires (does not go off)
  - The mechanism fails to extract a fired cartridge case
  - Unburned grains of propellant powder are discovered spilled in the mechanism
  - A shot sounds weak or abnormal
  - In such cases it is possible that a bullet is lodged part way down the barrel. Firing a subsequent bullet into the obstructed barrel can damage the firearm and cause serious injury to the shooter or bystanders.
- Bullets can become lodged in the barrel:

- If the cartridge has been improperly loaded without propellant powder, or if the powder fails to ignite. (Ignition of the cartridge primer alone will push the bullet out of the cartridge case, but usually does not generate sufficient energy to expel the bullet completely from the barrel)
- If the bullet is not properly seated tightly in the cartridge case. When such a cartridge is extracted from the chamber without being fired, the bullet may be left behind in the bore at the point where the rifling begins. Subsequent chambering of another cartridge may push the first bullet further into the bore.
  - If there is any reason to suspect that a bullet is obstructing the barrel, immediately unload the firearm and look through the bore. It is not sufficient to merely look in the chamber. A bullet may be lodged some distance down the barrel where it cannot easily be seen. If a bullet is in the bore, do not attempt to shoot it out by using another cartridge, or by blowing it out with a blank or one from which the bullet has been removed. Such techniques can generate excessive pressure, damage the firearm and cause serious personal injury. If the bullet can be easily removed with a wood or brass dowel, (using hand pressure only, never "hammer" a bullet lodged in the bore) clean any unburned powder grains from the bore, chamber and mechanism before resuming shooting. If the bullet cannot be dislodged by tapping it with a cleaning rod, take the firearm to a gunsmith.
  - Dirt, corrosion, or other foreign matter on a cartridge can impede complete chambering and may cause the cartridge case to burst upon firing. The same is true of cartridges which are damaged or deformed.
  - Don't oil cartridges, and be sure to wipe the chamber clean of any oil preservative before commencing to shoot. Oil interferes with the friction between cartridge case and chamber wall that is necessary for safe functioning, and subjects the firearm to stress similar to that imposed by excessive pressure.
  - Use lubricants liberally on the moving parts of your firearm. Avoid excessive spraying of any aerosol gun care product, especially where it may get on ammunition. All lubricants, and aerosol spray lubricants in particular, can penetrate cartridge primers and cause misfires. Some highly penetrative lubricants can also migrate inside cartridge cases and cause deterioration of the propellant powder; on firing, the powder may not ignite. If only the primer ignites, there is a danger that the bullet may become lodged in the barrel.

**The use of reloaded or improper ammunition voids the warranty.**



## Manual Safety

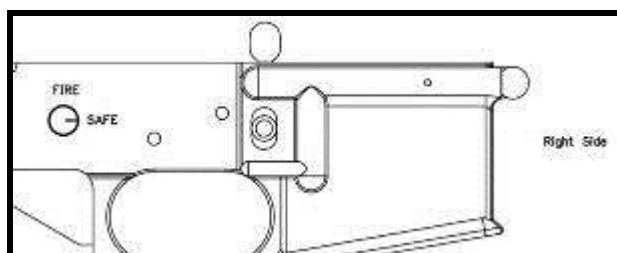
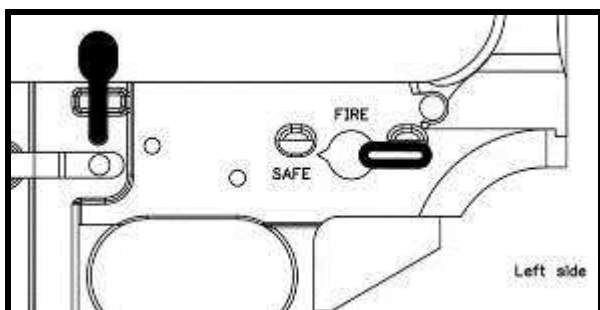
**WARNING: Always leave the manual safety engaged (on "SAFE") until you intend to fire.**

### Manual Safety

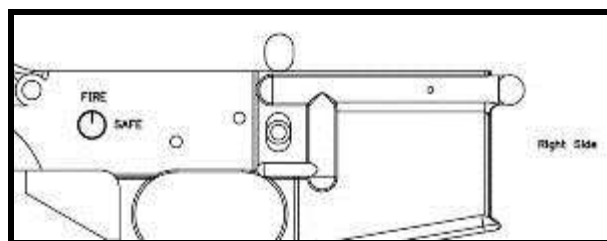
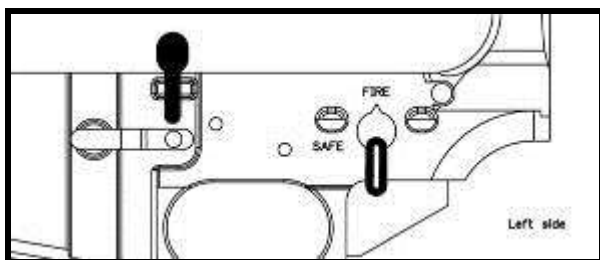
SafePosition - turn the safety lever to the left, so that it will indicate "SAFE" (picture A).

FirePosition - turn the safety lever to the right so the word "FIRE" is visible (picture B).

On the right side of the firearm you also have an indicator for the position of the manual safety (see pictures).



PICTURE "A"



PICTURE "B"

**Never rely solely on mechanical features alone- always be extremely careful, use safe gun handling practices, and avoid situations which could lead to an accident.**

### Functional Inspection:

1. Bolt movement: Remove the magazine and retract the bolt by pulling back the charging handle. Release the charging handle to return the bolt fully forward into battery.
2. Bolt catch: Insert the empty magazine, retract the bolt by pulling back the charging handle. The bolt locks back in rearmost position.

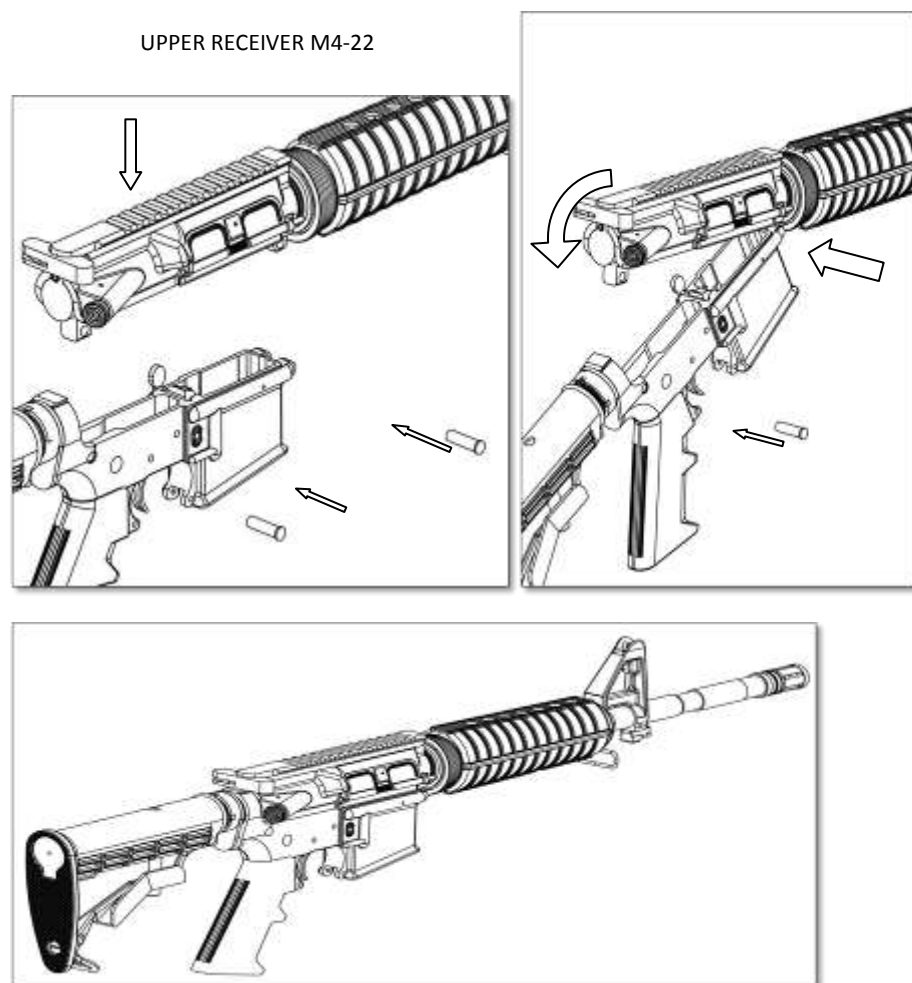
3. Decocking: Make sure that the firearm is unloaded (chamber cleared, barrel clear of any obstructions, magazine empty). Make sure the muzzle is pointed in a safe direction. Pull the trigger. The hammer drops in decocked position.

## **M4-22 UPPER & M4 carbine ASSEMBLY**

Disassemble the upper part of your weapon pushing the two pins (manually or with the special key) as indicated in picture no. 1. Remove the original charger.

Mount our M4-22 conversion kit leaning it on the front thrust bridge first, fix the front blocking pin, then lean the upper onto the lower part. Please make sure the hammer is cocked, or the upper cannot be pushed down onto the lower part. Insert the back locking pin.

Mount the charger simply pushing it in place till you hear a click.



NOTE : there are several "M16" models on sale, which have a different front and rear pin. You can use the special adaptors supplied by all major parts suppliers.

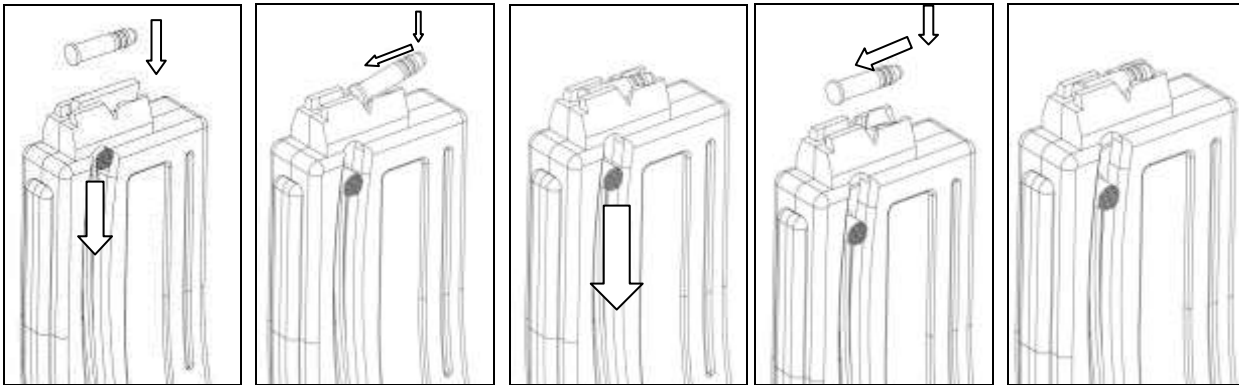
Make sure that the breech bolt is completely inside its housing and does not protrude. The bolt must also be pushed down completely, with the openings into the corresponding notches.

**DO NOT BLANK SHOOT**

## **Loading**

**Warning:** Make sure that the firearm is unloaded (chamber cleared, barrel clear of any obstructions, magazine empty) for inspection and that the safety is in the safe position. Keep muzzle pointed in safe direction and follow all safety procedures at all times. Practice these steps with an unloaded gun or dummy ammo until you are completely familiar and comfortable with the procedures. Use live ammo only when you are prepared to shoot. Always use clean, dry, high quality ammunition (of the proper caliber) that meets industry performance standards.

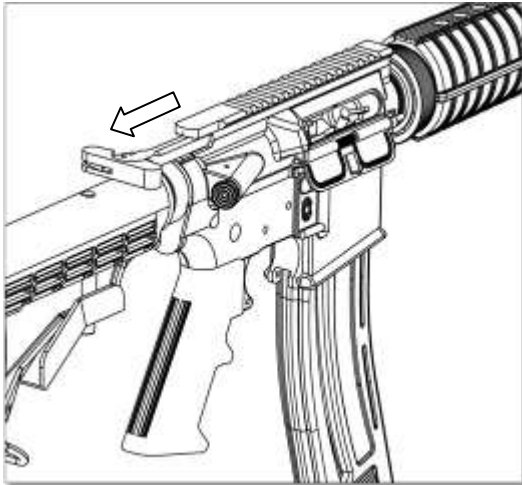
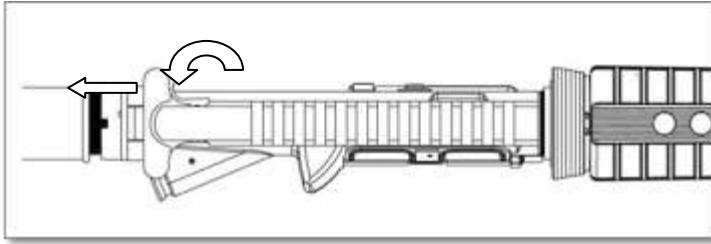
1. Press magazine release and remove empty magazine (pic. 5).
2. Use the side-mounted button to push the follower down. Insert the cartridge under the magazine lips, at the same time pushing down the follower (pic. 6). Do not use excessive force. The follower must be pushed just enough to allow one cartridge at a time to be placed into the magazine.



3. Insert the loaded magazine until the magazine catch locks it in position (pic. 7).



4. To load the chamber with the first cartridge, pick up the firearm with your shooting hand and point the muzzle in a safe direction.
5. Use your other hand to retract and release the bolt with the help of the charging handle (fig. 8). As the bolt travels forward it inserts the first round into the chamber. The hammer is now cocked. Leave the safety in the safe position until you are ready to fire.



**Warning:** Never put your hand in front of the muzzle.

Always load a round into the chamber by feeding it from the magazine.

12

**COLT M4/M16 cal. 22LR are designed so that they are able to fire when the magazine is removed. Therefore, if the magazine is removed from the firearm and there is a loaded round in the chamber, it will fire if the trigger is pulled. After inserting a magazine, always test to make sure it is locked in place by applying some removal pressure to the magazine.**

Your firearm is now ready to fire. Keep your finger off the trigger and **out of the trigger guard until you are ready to fire.**

## **Firing**

Grasp firearm with one hand on forearm and other hand on grip with index finger resting along outside of trigger guard. Raise firearm and pull buttstock firmly into shoulder.

Aim at a safe target. Push the manual safety to the fire position. Squeeze the trigger slowly and maintain the pressure until the round is fired.

Your firearm loads immediately after firing.

You may continue to fire by pulling and fully releasing the trigger until the magazine is empty

If you wish to stop, release trigger, remove finger from trigger guard, and set safety selector to "SAFE" position. Remove cartridges as explained under section "Unloading"

If you decide not to fire after the hammer has been cocked or if you decide to suspend firing, keep the firearm pointed in a safe direction.

Remove your finger from within the trigger guard.

Place the manual safety in the "SAFE" position and remove the magazine.

Pull charging handle rearward to eject any remaining cartridge(s).

Make sure that the firearm is unloaded (magazine removed, chamber and barrel cleared)

You must be certain there is no cartridge in the chamber or obstructions in the barrel. Remember that any time you release the bolt while a magazine containing cartridges is in the firearm, you will have reloaded the firearm and it will be capable of firing.

Release the upper from the back removing the back locking pin, then pull the trigger while gently accompanying the hammer (in order not to blank fire)

**Keep the firearm pointed in a safe direction when decocking. Failure to do this can result in serious injury or death.**

## **Unloading:**

1. Point the muzzle in a safe direction.
2. Remove the magazine.
3. Ensure that the chamber is empty by pulling back the charging handle to visually inspect the chamber (fig. 9). Keep firearm pointed in a safe direction.
4. Retract the charging handle so that the bolt moves into battery.
5. Push the manual safety to the "fire" position (fig. 10)
6. Squeeze trigger to decock the firearm. The firearm may now be carried safely.

**Keep the firearm pointed in a safe direction when unloading. failure to do this can result in serious injury or death.**

## **Clearing misfires**

**Warning: If your firearm gives any indication that it is not performing properly or the operation of your firearm has changed "the way it feels or sounds", stop firing. Make sure the firearm is pointed in a safe direction, unload the firearm and have it inspected and test fired by a qualified gunsmith.**

1. If a cartridge fails to fire, wait 30 seconds while keeping the muzzle pointed in a safe direction. Keep your finger off the trigger and out of the trigger guard.
2. Place the manual safety in the "SAFE" position
3. Remove the magazine.
4. Grasp the bolt with the charging handle and briskly pull it fully rearward to eject the misfired round.
5. Check the barrel chamber and bore visually for any obstructions. Never look down the barrel from the muzzle end. You must be certain there are no cartridges in the chamber or obstructions in the barrel.

**Remember that any time you release the bolt while a magazine containing cartridges is in the firearm, you will have reloaded the firearm and it will be capable of firing.**

**Note: the forward assist plunger is not in function. In case of feeding failures, retract the charging handle to extract the damaged round.**

**Warning: Never try to use a misfired cartridge again.**

## **Sight adjustment**

Setting of the dual aperture rear sight

The dual aperture rear sight can be adjusted for two target ranges by flipping it forward or backward.

Short Range - The larger aperture is used for 0 - 200 yards range (0-200 meters) (fig. 12).

Normal Range - The smaller aperture is used for over 200 yards (200 meters) range (fig. 13).

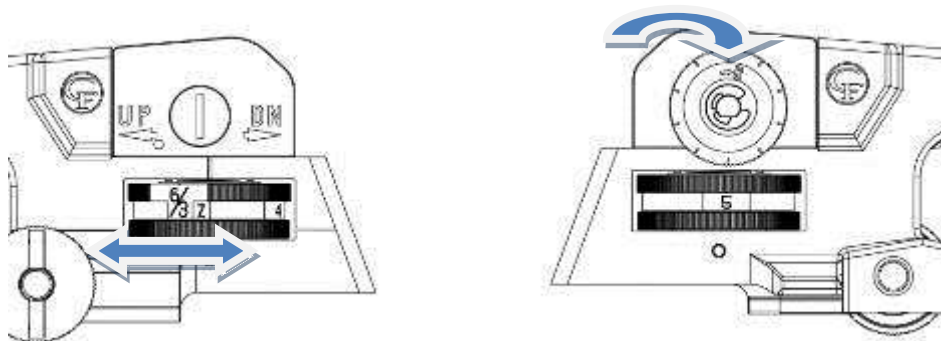
### Setting of the rear sight

The elevation is adjusted using the elevation knob below the rear sight (fig. 14). Turning the knob adjusts elevation up or down. Amount of adjustment is defined by a click when the knob is turned. The windage is adjusted using the windage knob on the side of the rear sight (fig. 15). Turning the knob adjusts for windage left or right. Amount of adjustment is defined by a click when the knob is turned.

Note: Because this is a replica, the markings on the elevation and windage knobs are not set for .22 LR ammunition.

### Mounting an optical sight

To mount an optical sight, the carry handle can be removed by losing the nuts on the left side of the carry handle (fig. 20). This will provide a mil-standard rail for mounting of optics.

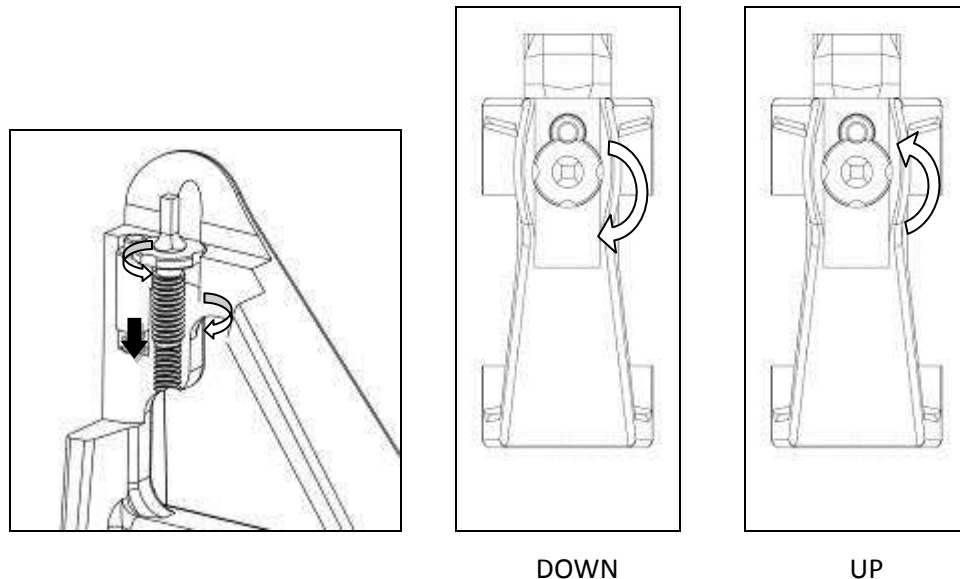


## **Setting of the front sight post**

The **elevation** is adjusted by pushing in the front sight post detent near the front sight post (fig. 16) and simultaneously turning the front sight post in desired position. The front sight post must be engaged in one of the 4 detents (fig 17).

NOTE: Adjustment of the front sight post is for initial zeroing of the rifle. For all future elevation adjustments use the rear sight.

By the "Mfour-22 Pistol" version the front sight is mounted directly on the handle, and the elevation adjustment can be made simply by screwing or unscrewing the sight.



## **Disassembly (field stripping)**

**Always follow the disassembly instructions exactly. Never do anything beyond what you are specifically instructed to do in this manual. Never alter or modify the parts in your firearm.**

Prior to disassembly, place the manual safety in the safe position, take **out the magazine and check that the firearm is not loaded.**

Remove the charger pushing the charger button.

Push the rear receiver pin out of the gun to the right (fig. 21; 22). Do not use excessive force. Push the front receiver pin and disassemble the upper part pushing it upwards.

## **Cleaning**

This product should be cleaned after every use and when exposed to dirt, sand, etc. When not in use, clean at least twice per year. A careful and scrupulous ordinary clearing of the firearms is essential to guarantee its safety and long life. We recommend to clean the weapon at least after shooting 200 to 300 shots.

- Every time you use your gun it is advised to clean it in order to remove all corroding agents (humidity, powder or lead residues etc.) which can in time alter a few parts.
- In order to perform a standard clearing, it is sufficient to utilize a good solvent, cleaning oil, a little brush.
- For a deeper cleaning, please turn to your local gunsmith

**Warning: always run the cleaning rods from the chamber end**

- Verify gun is ON SAFE.
- Remove charger and clean the retaining lips
- Visually inspect to verify that no ammo remains anywhere in the rifle.
- Remove receiver pins and disassemble the lower and upper parts.
- Thoroughly clean the bolt assembly area with a brush and cloth.
- Remove the sliding block and clean the ejector, breech block, bolt, battery (inside) and barrel breech.
- Clean the barrel with bore solvent utilizing a flexible cleaning rod inserted through breech end of barrel (where bullet seats). Dry the barrel with cleaning patches; always begin at the chamber. Repeat until barrel is clean.
- Apply a thin coat of oil to all metal parts.
- Reassemble firearm and check for proper function.

## **Ordinary and extraordinary maintenance**

- Before any sort of maintenance, make sure the firearm is unloaded.
- By "ordinary maintenance" we refer to measures the user should take to keep the gun in good working conditions.
- An "Extraordinary maintenance" implies the replacement of broken parts and therefore disassembling the gun. In this case only authorized personnel or a qualified gunsmith should operate.

- Also a long period of heavy use or inactivity requires an extraordinary maintenance; your gun should be taken to a qualified gunsmith to have the action disassembled for professional cleaning and lubrication.
- Your gunsmith will advise the best lubricant for the good maintenance of your revolver.
- Do not leave oil residues when cleaning and lubricating your firearm.
- Make sure that the mechanism of the weapon is easy; if it starts to stiffen, or if corrosion is starting on some essential parts, you should bring your gun to competent, professional personnel.
- Do not use pure silicon or lanolin.
- In the following pages you will find exploded views with a list of all parts
- When ordering parts, it's important to specify date of purchase, serial number, model, caliber and item reference of the part/s needed.
- If the gun has a problem that you cannot fix, DO NOT FIRE it but send it to an authorized center for a check-up. If you try to fix it personally, you may put in serious danger yourself and the people near you.
- Always pay great attention and handle the gun very carefully, in order to avoid terrible accidents which may change your life and that of others.

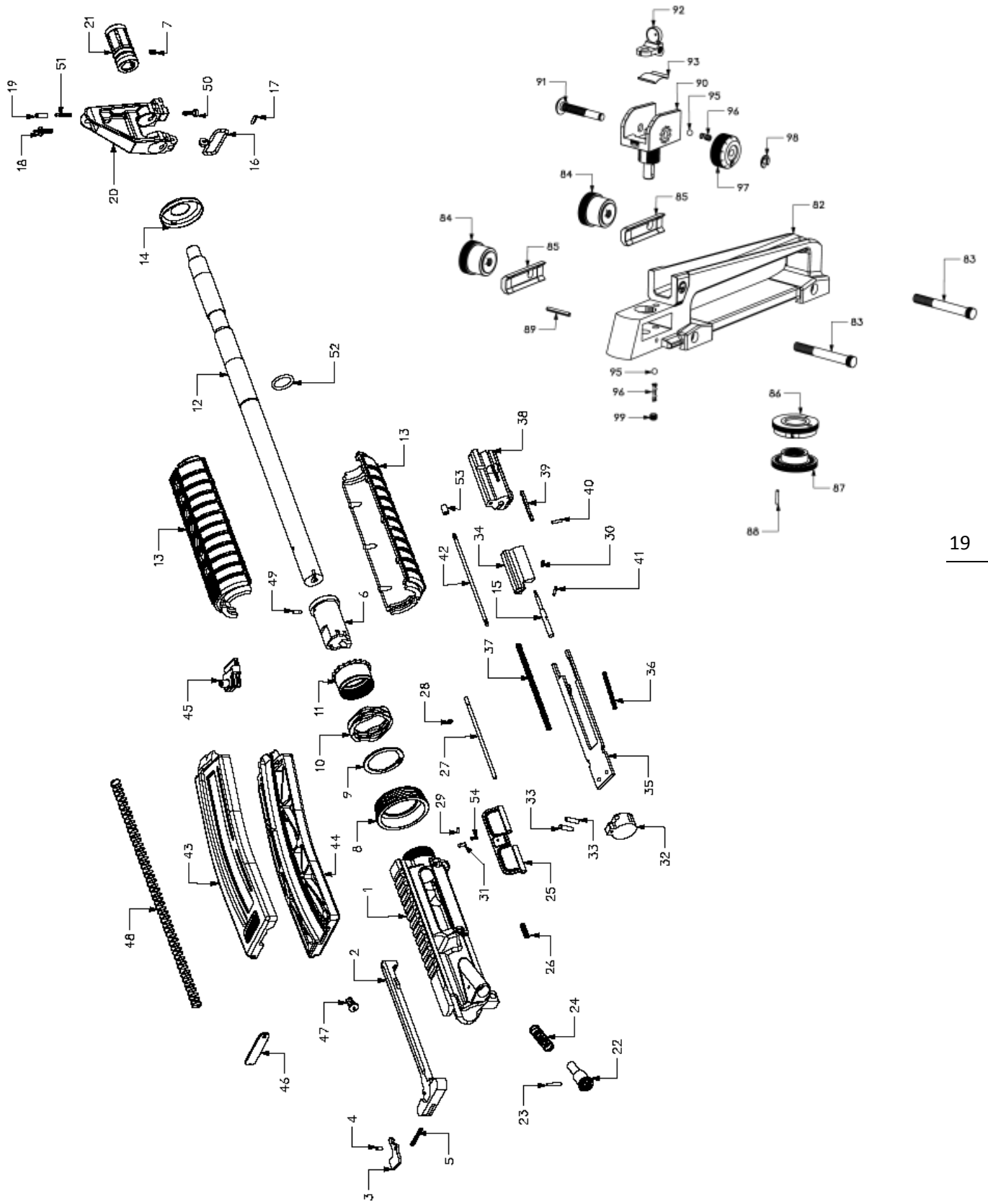


## TROUBLESHOOTING TIPS

PROBLEM	CAUSE	SOLUTION
<b>Last Round Bolt Stop Failure</b>	Bolt travel not sufficient Too high velocity in recoil Dirt / Debris in Action	Use ammunition slightly faster, remember the gun is tuned to shoot ammo 325 m/sec Use ammunition slightly less powerful, too much velocity may compromise the correct functioning of the bolt stop If you have been shooting for a while or using ammunition with excessive fouling, it may be necessary to clean the firearm.
<b>The bolt doesn't cycle correctly or is stuck</b>	Not enough pressure to cycle Dirt / Debris in Action – in breech cycle Ammunition too short or too long for chamber. Bolt not completely closed	Use Higher Velocity Ammo, remember the gun is tuned to shoot ammo 1050 fps (325 m/sec) or greater. Disassemble, clean carefully and oil the upper Check the ammunition / Consider different types of ammunition Carefully clean the breech bolt and barrel & chamber area
<b>Fail to Fire (DNF)</b>	Ammunition with rim out of tolerance Weak hammer spring Firing pin damaged or broken Dirty chamber	Change type or brand of ammunition Contact our service center Contact our service center to obtain a new firing pin Clean cartridge chamber with cleaning brush
<b>Failure to Extract Empty Shell</b>	Damaged Chamber Damaged Extractor Weak Extractor Spring Ammunition with rim out of tolerance	Contact a professional gunsmith to polish the chamber Contact our service center to obtain a new extractor Contact our service center to obtain a new extractor spring
<b>The empty shell does not eject (stove pipe)</b>	Not enough pressure to cycle	Change type or brand of ammunition Use Higher Velocity Ammo, remember the gun is tuned to shoot ammo 1050 fps (325 m/sec) or greater.
<b>The bolt stays completely open</b>	Damaged ejector Dirty chamber Damaged chamber Damaged extractor	Replace magazine Clean cartridge chamber with cleaning brush Contact a professional gunsmith to polish the chamber Contact our service center to obtain a new extractor

	Weak extractor spring Dirt / Debris in Action Weak recoil spring	Contact our service center to obtain a new extractor spring  Disassemble and carefully clean the gun Contact our service center to obtain a new spring.
<b>Ammunition does not chamber</b>	Incorrect Ammunition	Check the ammunition and change type if necessary  Disassemble and carefully clean the gun
<b>Magazine is stuck</b>	Dirt / Debris in action or chamber Magazine not properly seated Bullet crimp / design Dirt / Debris buildup Ammunition is too long	Check the magazine for correct fit and operation. Check the ammunition and change type if necessary  Clean the magazine thoroughly Change type of ammunition
<b>The gun fires with safety "On"</b>	Mechanical Issue	Do not attempt to use the gun, contact our service center immediately to arrange shipment of the gun  Lift the rear sight to raise the point of impact or vice versa to lower it.
<b>The gun shoots low</b>	Rear sight needs adjustment	Move the rear sight the opposite direction of error
<b>Shooting left or right (Windage)</b>	Rear sight needs adjustment	(If POI "Point of Impact" is left of center, move the rear sight to the right)

**M4-22 UPPER Conversion kit**  
**Exploded view and parts list**



**M4 CONVERSION KIT - PARTS LIST**

1	750104	Upper Receiver	28	140002	Ejection Port Cover Pin Retaining Ring
2	740310	Charging Handle	29	130007	Ejection Port Cover Latch Pin
3	760129	Charging Handle Latch	30	720060	Extractor Spring
4	130093	Charging Handle Latch Pin	31	730831	Ejection Port Cover Latch
5	720031	Charging Handle Latch Spring	32	740308	Bolt Block
6	740311	Barrel Extension	33	130014	Bolt Block Pin (2)
7	104000	Barrel Extension Indexing Set Screw	34	770488	Bolt Spring Balancing Guide
8	750107	Delta Ring	35	760131	Bolt Guide Bar
9	140016	Hand Guard Snap Ring	36	720068	Firing Pin Spring
10	270052	Weld Spring	37	720113	Bolt Main Spring
11	740312	Barrel Nut	38	740314	Bolt
12	710283	Barrel	39	760128	Extractor
13	750106	Hand Guard	40	130090	Extractor Pin
14	760130	Hand Guard Cap	41	730846	Firing pin pivot
15	730829	Firing Pin	42	730828	Bolt Spring Rod
16	721134	Front Sling Swivel	43	750108	Magazine Right Half
17	130091	Front Sling Swivel Pin	44	750109	Magazine Left Half
18	730833	Front Sight Post	45	750102	Magazine Follower
19	730832	Front Sight Detent Pin	46	750103	Magazine Floor Plate
20	740313	Front Sight	47	750110	Magazine Floor Plate Pin
21	730834	Flash Hider	48	720114	Magazine Spring
22	750105	Forward Assist Plunger	49	730862	Pin
23	130092	Forward Assist Plunger Pin	50	104017	Screw M4X12
24	720115	Forward Assist Plunger Spring	51	720107	Front Sight Detent Pin Spring
25	740309	Ejection Port Cover	52	160014	OR 2,62x17,13
26	721133	Ejection Port Cover Spring	53	730836	Forend head
27	730830	Ejection Port Cover Pin	54	720009	Ejection Port Cover Latch Spring

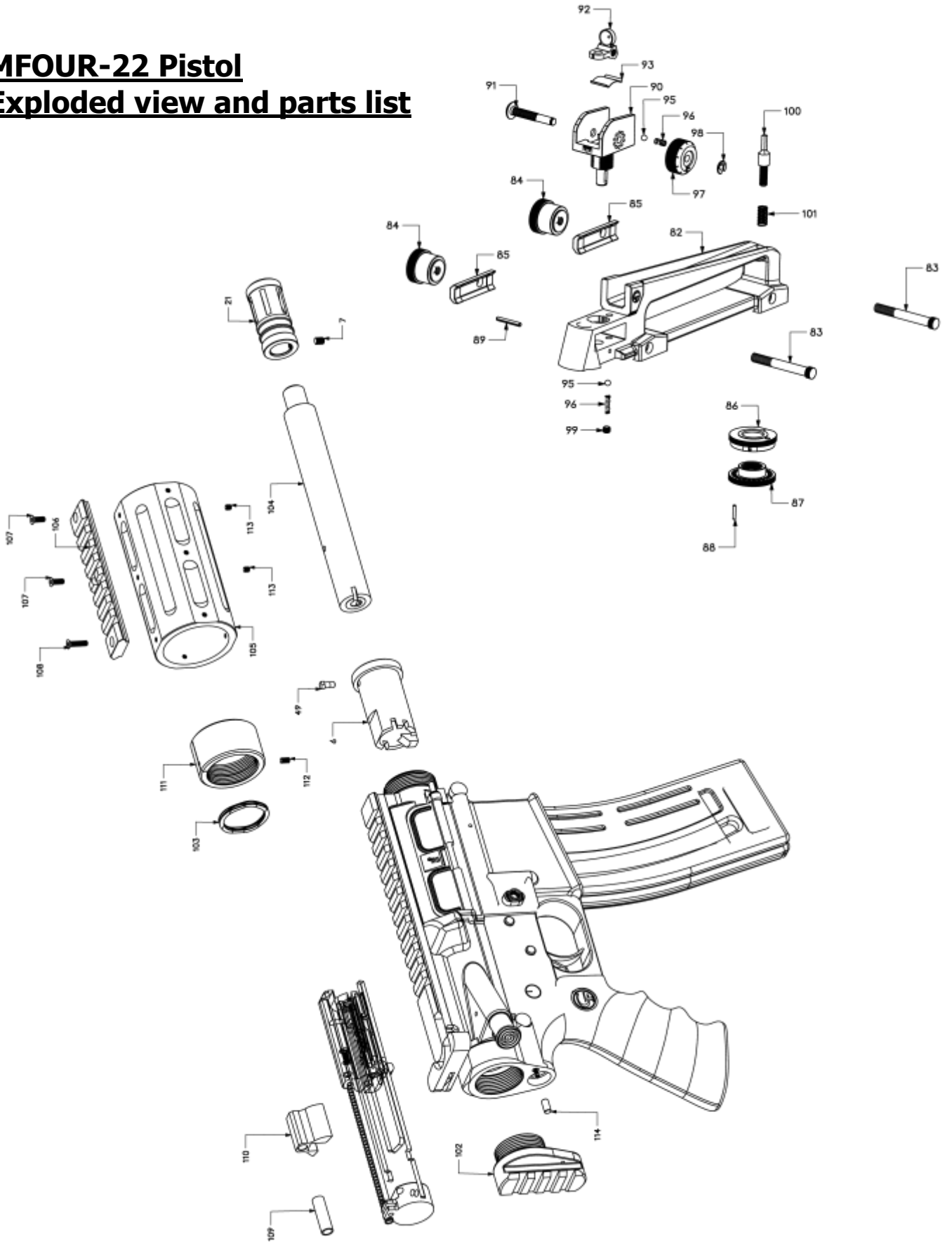
# MFOUR-22 Complete Rifle Exploded view



## **MFOUR-22 Complete Rifle** **Parts List**

55	750120	Lower mfour-22	78	770512	Hammer
56	750121	Stock	79	730896	Hammer bush
57	750122	Stock plug	80	721142	Hammer spring
58	750137	Stock ring nut	81	720007	Disconnect spring
59	750139	Tube lock	82	750126	Handle base
60	750123	Grip	83	730894	Side bolt
61	100005	Allen key	84	750131	Thumb knob
62	720118	Safety click spring	85	750135	Clamping bar
63	730902	Safety pin	86	750133	Elevation knob - upper part
64	720117	Click spring pin for lower/upper	87	750132	Elevation knob - lower part
65	730898	Click spring hinge for lower/upper	88	130001	Pin 1,5x8
66	730901	Rear fixing pin	89	130096	Pin 2x16
67	730900	Front fixing pin	90	750128	Rear sight
68	750136	Safety lever	91	730892	Windage screw
69	750140	Magazine catch	92	750134	Leaf
70	750138	Magazine button	93	721140	Dioptre lamel
71	720119	Magazine button spring	94	720008	Spring 2,7x10x0,3
72	730899	Hammer trigger pin	95	130008	Sphere 3
73	140017	Spring clip	96	720005	Spring 3x6x0,25
74	770513	Trigger	97	750130	Sight knob
75	730897	Trigger sleeve	98	140017	Spring clip D4
76	721141	Trigger spring	99	104019	handle screw
77	760139	Disconnect			

**MFOUR-22 Pistol**  
**Exploded view and parts list**



**MFOUR-22 Pistol Parts list**

1	750142	Upper Receiver	68	750136	Safety lever
2	740310	Charging Handle	69	750140	Magazine catch
3	760129	Charging Handle Latch	70	750138	Magazine button
4	130093	Charging Handle Latch Pin	71	720119	Magazine button spring
5	720031	Charging Handle Latch Spring	72	730899	Hammer/trigger pin
6	740311	Barrel Extension	73	140017	Spring Clip
7	104000	Barrel Extension Indexing Set Screw	74	770513	Trigger
15	730829	Firing Pin	75	730897	Trigger sleeve
21	730834	Flash Hider	76	721141	Trigger spring
22	750105	Forward Assist Plunger	77	760139	Disconnect
23	130092	Forward Assist Plunger Pin	78	770512	Hammer
24	720115	Forward Assist Plunger Spring	79	730896	Hammer bushing
25	740309	Ejection Port Cover	80	721142	Hammer spring
26	721133	Ejection Port Cover Spring	81	720007	Disconnect spring
27	730830	Ejection Port Cover Pin	82	750146	Handle base Mfour Pistol
28	140002	Ejection Port Cover Pin Retaining Ring	83	730894	Side bolt
29	130007	Ejection Port Cover Latch Pin	84	750131	Thumb knob
30	720060	Extractor Spring	85	750135	Clamping bar
31	730831	Ejection Port Cover Latch	86	750133	Elevation knob - upper part
32	740308	Bolt Block	87	750132	Elevation knob - lower part
33	130014	Bolt Block Pin (2)	88	130001	Pin 1,5x8
35	760131	Bolt Guide Bar	89	130096	Pin 2x16
36	720068	Firing Pin Spring	90	750128	Rear sight
37	720113	Bolt Main Spring	91	730892	Windage screw
38	740314	Bolt	92	750148	Leaf
39	760128	Extractor	93	721140	Dioptré label
40	130090	Extractor Pin	94	720008	Spring 2,7x10x0,3
41	730846	Firing pin pivot	95	130008	Sphere 3
42	730828	Bolt Spring Rod	96	720005	Spring 3x6x0,25
43	750108	Magazine Right Half	97	750130	Sight knob
44	750109	Magazine Left Half	98	140017	Spring clip D4
45	750102	Magazine Follower	99	104019	handle screw
46	750103	Magazine Floor Plate	100	730913	Handle front sight
47	750110	Magazine Floor Plate Pin	101	720013	Spring 5.2x10x0.4
48	720114	Magazine Spring	102	750143	Plug for Mfour-22 Pistol
49	730862	Pin	103	270055	Smalley spring C112-H1
53	730836	Forend head	104	710301	Rifled barrel, 6", black
54	720009	Ejection Port Cover Latch Spring	105	730915	Forend
55	750120	Lower mfour-22	106	750147	Picatinny
60	750123	Grip	107	100016	Allen key screw M3x8
61	100005	Allen key	108	100018	Allen key screw M3x12
62	720118	Safety click spring	109	730918	Bolt Spring Balancing Guide tube
63	730902	Safety pin	110	770530	Bolt Spring Balancing Guide
64	720117	Click spring pin for lower/upper	111	730916	Forend ring nut
65	730898	Click spring hinge for lower/upper	112	104016	Grub nut M3x5
66	730901	Rear fixing pin	113	104007	Grub nut M3x3
67	730900	Front fixing pin	114	130025	Pin 4x8



## **WARRANTY CONDITIONS**

Armi Sport guarantees that our products are scrupulously checked against defects in materials, workmanship and aesthetical and functioning problems.

In case you find a defect in one of our products, you should immediately contact the DEALER/SHOP/GUNSMITH where you have bought your gun. The seller will indicate the conditions for the repair, which will be either made directly by them or through our assistance.

ATTENTION: end users are not allowed to ship any gun directly to Armi Sport for repair, either under guarantee or against payment. Transportation of weapons is strictly regulated and the documents which are required can solely be issued by companies with specific authorization.

1. Armi Sport will warrant for structural or project defects without any time limit.
2. Armi Sport guarantees, for a year after the purchase date, the free substitution of parts for defects which have been found out also during use: wear of parts which shouldn't be subject to wear, or excessive wear of parts subject to wear. The customer will have to give evidence of the purchase date with a bill or other valid proof.
3. In case the defect under cover of guarantee is not repairable, Armi Sport will provide for a free substitution of the weapon.

ARMI SPORT RESERVES THE INSINDACABLE FACULTY OF DEFINING THE TYPE OF DEFECT OF THE WEAPON, AND THEREFORE TO STATE WHETHER THE DEFECT IS COVERED BY GUARANTEE –Armi Sport's decision will be fair but final.

Armi Sport will be allowed a timing of 60 days for repair under guarantee, and 90 days for free substitution.

**We strongly recommend that you keep the receipt or proof of purchase for any Armi Sport product**

### THE GUARANTEE IS VOID IN CASE:

- Inadequate ammunition has been used (any ammunition but those commonly on sale, reloaded ammunition, different from caliber and specification indicated on the gun barrel)
- The gun failed to be provided proper maintenance and cleaning
- The gun has been modified without our prior consent
- Unauthorized, inadequate or incorrect repairs have been carried out
- Parts subject to wear and corrosion
- Damage (improper use of the gun by the user)
- Expiry of the guarantee

In the above cases the repair, if carried out, will be charged to the customer

**The guarantee does not cover parts subject to wear and corrosion**

In case non original spare parts are used, the guarantee or any service contract with Armi Sport will be void.

**ATTENTION: delivery expenses to and from the service center are not covered by the guarantee and will be charged to the customer.**

In case, for any valid reason, you do not have the possibility to obtain repair under guarantee at the shop where you bought the gun, you may contact us directly; we will indicate a local dealer to support you with the repair file:

**e-mail: [info@armichiappa.com](mailto:info@armichiappa.com) - Phone: +39/030/9749065**  
**USA: e-mail: [info@chiappafirearms.com](mailto:info@chiappafirearms.com) - Phone: 937-835-5000**

**Should Kimar become aware of a defect of the rifle during the guarantee period, the defective part will be substituted free of charge.**

**This instruction manual must always follow the firearm, also in case the owner should change**

Procedure for the usage of the guarantee

BEFORE shipping the weapon back for repair, the customer should contact the gunshop where the product was bought. The customer should supply proper information on the defect, and the relevant file will then be started.

The gun shop will be given an "NDR" (Repair Number). The weapon will have to be shipped back to the gun shop in its original packing, with a copy of the purchase date, the Guarantee Form (attached) duly filed with indication of the NDR number, according to the instructions of the dealer.

**WARNING: the returned gun must be protected with an adequate packaging; any damages occurred during transportation and handling will be the customer's responsibility**

NdR NDR : \_\_\_\_\_

### **Request form**

### **REPAIR UNDER GUARANTEE**

**Please write in the above box the Repair Number you were given by the gun shop**

#### **1. Customer data:**

- Name: \_\_\_\_\_
- Address : \_\_\_\_\_
- Town : \_\_\_\_\_
- ZIP Code : \_\_\_\_\_
- Phone : \_\_\_\_\_ Available from \_\_\_\_ to \_\_\_\_
- Fax : \_\_\_\_\_

#### **2. Product information:**

- Model : \_\_\_\_\_
- Serial number : \_\_\_\_\_

#### **3. Gun Shop - dealer:**

- Purchase date : \_\_\_\_\_
- Dealer name : \_\_\_\_\_
- Dealer address : \_\_\_\_\_

#### **4. Description of defect:**

---

---

---

---

Documents to attach: Proof of the purchase date



Armi Sport  
di Chiappa Silvia & C Snc  
Via Milano N°2 Azzano Mella (BS)  
Tel. 030 9749065 Fax 030 9749232  
[www.armichiappa.com](http://www.armichiappa.com)  
email: [info@armisport.com](mailto:info@armisport.com)



Kimmar Srl  
Via Milano N°2 Azzano Mella (BS)  
Tel. 030 9749065 Fax 030 9749232  
[www.armichiappa.com](http://www.armichiappa.com)  
email: [info@kimar.com](mailto:info@kimar.com)



Chiappa Firearms, Ltd.  
6785 W. Third Street  
Dayton, OH 45427 USA  
[www.chiappafirearms.com](http://www.chiappafirearms.com)  
email: [info@chiappafirearms.com](mailto:info@chiappafirearms.com)