

MF65M

Quick Start Guide

ZTE CORPORATION

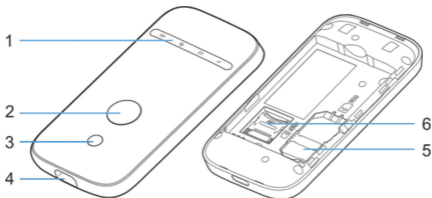
NO. 55, Hi-tech Road South, ShenZhen, P.R.China

Postcode: 518057

Getting to Know Your Device

Appearance

The following figure is for your reference only.



1. LED Indicators
2. Power Key
3. WPS Key
4. Charging/micro-USB Jack
5. (U)SIM Card Slot
6. microSDHC Card Slot



NOTE:

The microSDHC™ logo  is a trademark of SD-3C, LLC.



Getting to Know Your Device

Indicators

When the device is powered on, the following icons may be lighting. For a description of the icons, refer to the following table.

Indicator	Status	Description
Network 	Red solid	Error status. Not registered to the mobile network, no (U)SIM card inserted or no network service available.
	Green solid	Registered to the mobile network.
	Green blinking	Connected to the mobile network and data is being transferred.
Wi-Fi 	Blue solid	Wi-Fi is active.
	Blue blinking	WPS is active.
	off	Wi-Fi is off or your device is in sleep mode.

Getting to Know Your Device

SMS 	Blue solid	You have unread messages.
	Blue blinking	You have new messages.
	off	No unread messages.
Battery 	Red solid / blinking	The battery is low. Please charge the battery.
	Green blinking	The battery is being charged or in standby mode.
	Green solid	The battery level is middle or high.
	off	Your device is not being charged, or the battery is not inserted.

Getting to Know Your Device

Connection Scenarios

The device can access the Internet in two ways and it allows multiple clients to surf on the Internet at the same time. The following figures are for your reference only.

- **3G Mode:** A (U)SIM card can be used to access the Internet.



- **Internet Wi-Fi Mode:** Your device can be connected to a WLAN device (such as a hotspot device or wireless router) through Wi-Fi to access the Internet. The WLAN device must be already connected to the Internet.

 **NOTE:** Your device and the WLAN device must be in different subnets.

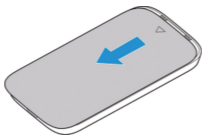
Getting to Know Your Device



Installing Your Device

1. Slide the back cover and remove it.

 **NOTE:** Do not remove the cover rudely.

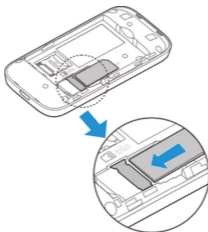


2. Install a (U)SIM card to the (U)SIM card slot.

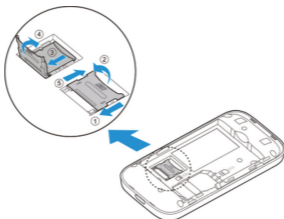
 **WARNING!**

Your device does not support the micro-SIM and nano-SIM card or any other non-standard SIM cards. To avoid damaging the device, do not use those cards or any card holders.

Installing Your Device

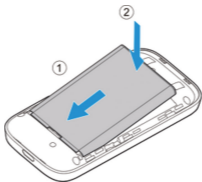


3. Install the microSDHC card if necessary.



Installing Your Device

4. Install the battery.



5. Close the back cover.



Connecting to Your Device

Using Wi-Fi

1. Power on your device.
2. Make sure your computer or other client devices have enabled Wi-Fi, and search for available wireless networks.

 **NOTE:**

Refer to your Wi-Fi-enabled client device manual for further details on how to search for wireless networks. If you use a computer, you need to set your computer to obtain an IP address automatically.

3. Select the Wi-Fi name (SSID) of your device, and click **Connect**.
4. Enter the Wi-Fi password if necessary, and click **OK**.

 **NOTE:**

Refer to the chapter **Getting to Know the Wi-Fi SSID and Password** to get the default Wi-Fi SSID and password.

5. Wait until the client device is connected to your device successfully.

Connecting to Your Device

Using a USB Cable

1. Connect a computer to your device with a USB cable.
2. Power on your device. The operating system detects and identifies new hardware, and automatically installs the hardware.

 **NOTE:**

If the system does not automatically launch installation, you can click the device installation icon in **My Computer** to install the software.


3. Wait until the computer is connected to your device successfully.

Getting to Know the Wi-Fi SSID and Password

You can view the label on the device to get the default Wi-Fi SSID and password.

Logging in to the 3G Mobile Hotspot Configuration Page

1. Make sure the connection between your device and the client device is correct.
2. Launch the Internet browser and enter **http://192.168.0.1** or **http://virgin.wifi** in the address bar.

 **NOTE:** It is recommended that you use IE (7.0 or later), Firefox (15.0 or later), Opera (10.0 or later), Safari (4.0 or later), or Google Chrome (10.0 or later).

3. Enter the password to log in to the 3G Mobile Hotspot configuration page.

 **NOTE:** The default password is **admin**.

Changing the Wi-Fi SSID or Password

1. Log in to the 3G Mobile Hotspot configuration page.
2. Select **Settings > Wi-Fi Settings > Basic Settings**.
3. Change the **Network Name (SSID)** or the **Pass Phrase (Password)**.
4. Click **Apply**.

Accessing the Internet

3G Mode

After a client device is successfully connected to your device, you can access the Internet in **Automatic** or **Manual** mode. The default mode is **Automatic**.

Mode	Operation
Automatic	Your device is automatically connected to the Internet, and you can surf on the Internet through the client.
Manual	<ol style="list-style-type: none">1. Log in to the 3G Mobile Hotspot configuration page.2. Select Settings > Network Settings > Dial-up Settings > WAN Connection Mode > Manual, and then click Apply.3. Select Home, and click Connect or Disconnect.

 **NOTE:**

To modify the parameters of your device, log in to the [3G Mobile Hotspot configuration page](#).

Accessing the Internet

Internet Wi-Fi Mode

1. Log in to the 3G Mobile Hotspot configuration page.
2. Select **Settings > Internet Wi-Fi**.
3. Set the **Internet Wi-Fi Switch** and **Preferred Network**, and click **Apply**.
4. You need to set Internet Wi-Fi Switch to **Enable** and **Preferred Network** to **Wi-Fi**.

Internet Wi-Fi

Internet Wi-Fi Switch Enable Disable

Preferred Network Wi-Fi WWAN

Current Status WAN connected

Apply

5. Connect to the Wi-Fi hotspot.

The following two methods are for your reference.

- ▶ Select a Wi-Fi hotspot listed in the Wi-Fi Hotspot area, enter a pass phrase in the Pass Phrase text box and click **Apply**.
- ▶ Click **Add**, enter the Wi-Fi hotspot information in the Add Wi-Fi Hotspot area, and click **Apply**.

Accessing the Internet


Add Wi-Fi Hotspot

Network Name(SSID) *

Security Mode

WPA Algorithms TKIP AES AUTO

Pass Phrase * Display Password

	SSID	Signal	Security Mode
c	ZTE_AP_3508		WPA2-PSK

After the client device is connected to the Wi-Fi hotspot successfully, you can access the Internet.

Configuring Your PC

The following procedure describes how to configure the Internet Protocol in the Windows 7 operating system for your Wi-Fi connection.

1. Right-click **Network** and select **Properties**.
2. Select **Change adapter settings**.
3. Right-click **Wireless Network Connection** and select **Properties**.
4. Select **Internet Protocol Version 4 (TCP/IPv4)**, and click **Properties**.
5. Select **Obtain an IP address automatically** and **Obtain DNS server address automatically**, and click **OK**.

Warning and Notice

To the Owner

- If inadequately shielded, some electronic devices, for example, the electronic system of vehicles, may be affected by the electromagnetic interference caused by the device. Consult the manufacturers of such devices before using the device if necessary.
- Operating the device may interfere with medical instruments such as hearing aids and pacemakers. Always keep the device more than 20 centimeters away from such medical instruments when your device is powered on. Power off the device if necessary. Consult a physician or the manufacturers of medical instruments before using the device if necessary.
- Be aware of the usage limitation when using the device at places such as oil warehouses or chemical factories, where there are explosive gases or explosive products being processed. Power off the device if necessary.
- Do not use electronic transmission devices in aircrafts, at petrol stations or in hospitals. Observe and obey all warning signs, and power off the device in these conditions.

Warning and Notice

- Do not touch the inner antenna area unless necessary. Otherwise the performance of the device may be affected.
- Do not use the device in an enclosed environment or where heat dissipation is poor. Prolonged work in such space may cause excessive heat and raise ambient temperature, which may lead to automatic shutdown of the device for your safety. In the case of such event, cool the device in a well-ventilated place before turning on for normal use.
- Keep the device out of the reach of small children. The device may cause an injury if used as a toy.
- When the device is operating, do not touch the metallic parts. Failing to do so may cause burns.

To the Users

- Use original accessories or accessories that are authorized. Using any unauthorized accessories may affect the performance of the device and violate the related national regulations about telecom terminals.

Warning and Notice

- Avoid using the device near or inside metallic constructions or establishments that can emit electromagnetic waves, because signal reception may be affected.
- The device is not waterproof. Keep the device dry and store it in a shady and cool place.
- Do not use the device immediately after a sudden temperature change, because dew may be generated inside and outside the device. Do not use it until it becomes dry.
- Handle the device carefully. Do not drop, bend or strike it. Otherwise the device may be damaged.
- Only qualified personnel can dismantle and repair the device.
- An operating temperature between -10°C and $+45^{\circ}\text{C}$ and humidity between 5% and 95% are recommended.

Using Battery

Do not change the battery in your device by yourself. The battery can only be changed by ZTE or ZTE authorized service provider.

Warning and Notice

Limited Warranty

This warranty does not apply to defects or errors in the product caused by:

- i. Reasonable abrasion.
- ii. End users' failure to follow ZTE's installation, operation or maintenance instructions or procedures.
- iii. End users' mishandling, misuse, negligence, or improper installation, disassembly, storage, servicing or operation of the product.
- iv. Modifications or repairs not provided by ZTE or a ZTE-certified individual.
- v. Power failures, surges, fire, flood, accidents, and actions of third parties or other events outside ZTE's reasonable control.
- vi. Usage of third-party products or usage in conjunction with third-party products if such defects are due to the combined usage.
- vii. Any other cause beyond the range of normal usage intended for the product.

Warning and Notice

End users have no right to reject or return the product, or receive a refund for the product from ZTE under the above-mentioned situations.

This warranty is end users' sole remedy and ZTE's sole liability for defective or nonconforming items, and is in lieu of all other warranties, expressed, implied or statutory, including but not limited to the implied warranties of merchantability and fitness for a particular purpose, unless otherwise required under the mandatory provisions of the law.

Limitation of Liability

ZTE shall not be liable for any loss of profits or indirect, special, incidental or consequential damages resulting from or arising out of or in connection with using of this product, no matter whether or not ZTE had been advised, knew or should have known of the possibility of such damages, including, but not limited to lost profits, interruption of business, cost of capital, cost of substitute facilities or product, or any downtime cost.

LEGAL INFORMATION

Copyright © 2014 ZTE CORPORATION.

All rights reserved.

No part of this publication may be excerpted, reproduced, translated or utilized in any form or by any means, electronic or mechanical, including photocopying and microfilm, without the prior written permission of ZTE Corporation.

The manual is published by ZTE Corporation. We reserve the right to make modifications on print errors or update specifications without prior notice.

Version No.: R1.0

Edition Time: October 28, 2014

Troubleshooting

Problem	Recommended Action
The connection between your device and a PC through a USB cable cannot be established.	<ul style="list-style-type: none">• Install the software, and run the installation program in the path of My Computer.• If the driver of your device is abnormal, reinstall the software. You need to uninstall the software first.
The connection between your device and a client through Wi-Fi cannot be established.	<ul style="list-style-type: none">• Ensure that the Wi-Fi function is enabled.• Refresh the network list and select the correct SSID.• Check the IP address, and ensure that your client can automatically obtain an IP address.• Enter the correct network key (Wi-Fi password) when you connect the client to your device.

Troubleshooting

Problem	Recommended Action
The client connected to the device cannot access the Internet.	<ul style="list-style-type: none">• Ensure that your (U)SIM card is available.• Change the location and find a place with good signal.• Check the settings of the WAN connection mode.• Contact your service provider and confirm your APN settings.
The client cannot access the Internet in Internet Wi-Fi mode.	<ul style="list-style-type: none">• Ensure that the WLAN device has already been connected to the Internet.• Ensure that your device and the WLAN device are in different subnets.

Troubleshooting

Problem	Recommended Action
The 3G Mobile Hotspot configuration page cannot be visited.	<ul style="list-style-type: none"><li data-bbox="391 252 917 434">• Enter the correct address. The default address is http://192.168.0.1 or http://virgin.wifi.<li data-bbox="391 441 917 522">• Use only one network adapter in your PC.<li data-bbox="391 529 917 573">• Do not use any proxy server.

C € 1588