

# Always here to help you

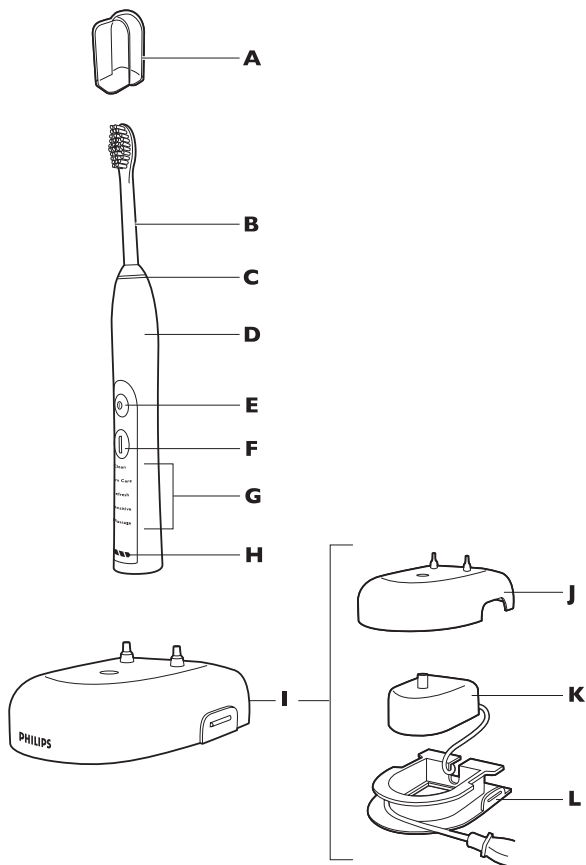
Register your product and get support at  
[www.philips.com/welcome](http://www.philips.com/welcome)

Question?  
Contact  
Philips

FlexCare+  
900+ Series  
Rechargeable  
sonic toothbrush



**PHILIPS**  
**sonicare**



**Sonicare 900+ Series**

---

**ENGLISH 4**

## Introduction

Congratulations on your purchase and welcome to Philips! To fully benefit from the support that Philips offers, register your product at [www.philips.com/welcome](http://www.philips.com/welcome).

# IMPORTANT SAFEGUARDS

## READ ALL INSTRUCTIONS BEFORE USE

To reduce the risk of electrocution:

- 1 Do not place or store product where it can fall or be pulled into a tub or sink.
- 2 Do not place in or drop into water or other liquid.
- 3 Do not reach for a product that has fallen into water. Unplug immediately.
- 4 Do not use while bathing.

## **WARNINGS**

To reduce the risk of burns, electrocution, fire or injury to persons:

- 1 Discontinue use if this product appears damaged in any way (brush head, handle, charger). This product contains no user-serviceable parts. Refer to chapter 'Guarantee and service' if your Sonicare no longer works properly or needs repair.
- 2 Never use the charger if it has a damaged cord or plug.
- 3 Keep cord away from heated surfaces.
- 4 Do not use the charger outdoors.
- 5 Do not use the charger if dropped into water.

- 6 This product is designed to clean your teeth, gums and tongue only. Use this product only for its intended use as described in this booklet. Discontinue use of this product and contact a physician/dentist if discomfort or pain is experienced.
- 7 This appliance is not intended for use by persons (including children) with reduced physical, sensory or mental capabilities, or lack of experience and knowledge, unless they have been given supervision or instruction concerning use of the appliance by a person responsible for their safety.
- 8 Children should be supervised to ensure that they do not play with the appliance.
- 9 Do not use attachments other than those recommended by the manufacturer.
- 10 If your toothpaste contains peroxide, baking soda or other bicarbonate (common in whitening toothpastes), thoroughly clean the brush head and the handle with soap and water after each use. Otherwise the plastic may crack.
- 11 To avoid damage to the product, do not place the brush head, handle, charger or charger cover in the dishwasher for cleaning.

---

## **MEDICAL WARNINGS**

- 1 Consult your dental professional before you use this product if you have had oral or gum surgery in the previous 2 months.
- 2 Contact your dental professional if excessive bleeding occurs after using this product or bleeding continues to occur after 1 week of use.
- 3 If you have a pacemaker or other implanted device, contact your physician or the device manufacturer prior to use.

- 4 Sonicare has been tested and is compliant with safety standards for electromagnetic devices.
- 5 Consult your physician prior to using the Sonicare if you have medical concerns.

## SAVE THESE

# INSTRUCTIONS

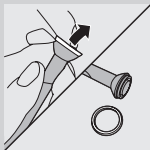
### **Your Sonicare (Fig. 1)**

- A Hygienic travel cap
- B Brush head
- C Interchangeable color code ring
- D Handle with soft grip
- E Power on/off button
- F Mode button
- G Brushing modes
- H Deluxe recharge gauge
- I Deluxe charger (select models)
- J Charger cover with brush head holder
- K Travel charger
- L Charger base with cord wrap

***Note: The contents of the box vary based on model purchased***

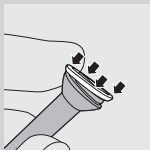
## Getting started

### Changing the color code ring

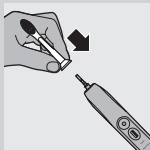


Sonicare brush heads come with interchangeable color code rings to identify your brush head. To change the color code ring:

- 1** Pull the color code ring from the bottom of the brush head.
- 2** Install a new ring by slipping one edge of the new ring over the bottom of the brush head.



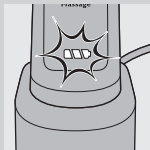
### Attaching the brush head



- 1** Align the brush head so the bristles face the front of the handle.
- 2** Firmly press the brush head down on the metal shaft until it stops.

*Note: There is a small gap between the color code ring and the handle.*

## Charging your Sonicare



**1** Put the plug of the charger in a live electrical outlet.

**2** Place the handle on the charger.

▶ The flashing light of the battery gauge indicates that the toothbrush is charging.

- 1 solid green LED indicates that the toothbrush is 34-66% charged.
- 2 solid green LEDs indicate that the toothbrush is 67-94% charged.
- 3 solid green LEDs indicate that the toothbrush is fully charged.

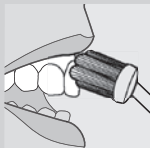
*Note: If the battery charge of your Sonicare is low, you hear 3 beeps and 1 LED of the recharge gauge flashes yellow for 30 seconds after completing the brushing cycle.*

*Note: To keep the battery fully charged at all times, you may keep your Sonicare on the charger when not in use. Once the Sonicare is fully charged, the charger draws minimal energy from the electrical outlet.*

*Note: It takes at least 24 hours to fully charge the battery.*

## Using your Sonicare

### Brushing instructions



**1** Wet the bristles and apply a small amount of toothpaste.

**2** Place the toothbrush bristles against the teeth at a slight angle towards the gumline.

**3** Press the power on/off button to switch on the Sonicare.

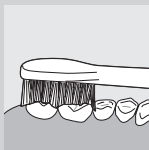


- 4** Apply light pressure to maximize Sonicare's effectiveness and let the Sonicare toothbrush do the brushing for you. Do not scrub.
- 5** Gently move the brush head slowly across the teeth in a small back and forth motion so the longer bristles reach between your teeth. Continue this motion throughout your brushing cycle.

*Note: To make sure you brush evenly throughout the mouth, divide your mouth into 4 sections using the Quadpacer feature (see chapter 'Features').*



- 6** Begin brushing in section 1 (outside top teeth) and brush for 30 seconds before moving to section 2 (inside top teeth). Continue brushing in section 3 (outside bottom teeth) and brush for 30 seconds before moving to section 4 (inside bottom teeth).



- 7** After you have completed the brushing cycle, you can spend additional time brushing the chewing surfaces of your teeth and areas where staining occurs. You may also brush your tongue, with the toothbrush turned on or off, as you prefer.

Your Sonicare is safe to use on:

- Braces (brush heads wear out sooner when used on braces)
- Dental restorations (fillings, crowns, veneers)

## Brushing modes

---

Sonicare automatically starts in the default Clean mode.

- 1** Prior to turning on the Sonicare, press the mode button to toggle between modes.
- ▶ The selected brushing mode illuminates.
  - ▶ Once a brushing mode has been selected, it remains active until another brushing mode is selected.

*Note: When the toothbrush is switched on, you cannot toggle between modes.*

The following brushing modes are available:

### **Clean**

Complete whole mouth cleaning (2 minutes).

### **Gum Care**

Complete whole mouth cleaning (2 minutes) plus gentle cleaning for problem areas and along the gumline (1 minute).

### **Refresh**

Touch-up for a quick clean (1 minute).

### **Sensitive**

Gentle cleaning for sensitive gums and teeth (2 minutes).

### **Massage**

Gentle gum stimulation (2 minutes).

*Note: When the Sonicare is used in clinical studies, the default 2-minute Clean mode must be selected. The handle has to be fully charged. Deactivate the Easy-start feature. For areas where excess staining occurs, an additional 30 seconds of brushing time can be spent to help remove stains.*

## Features

### Easy-start

---

- This Sonicare model comes with the Easy-start feature activated.
- The Easy-start feature gently increases power over the first 14 brushings to ease into the Sonicare experience.

*Note: Each of the first 14 brushings must be at least 1 minute in length to properly move through the Easy-start ramp-up cycle.*

### Deactivating or activating the Easy-start feature

**1** Attach your brush head to the handle.

**2** Place the handle on the plugged-in charger.

- To deactivate Easy-start:

Press and hold the power on/off button for 2 seconds. You hear 1 beep to indicate that the Easy-start feature has been deactivated.

- To activate Easy-start:

Press and hold the power on/off button for 2 seconds. You hear 2 beeps to indicate that the Easy-start feature has been activated.

*Note: Using the Easy-start feature beyond the initial ramp-up period is not recommended and reduces Sonicare's effectiveness in removing plaque.*

### Smartimer

---

The Smartimer indicates that your brushing cycle is complete when it automatically turns off the toothbrush at the end of the brushing cycle. Dental professionals recommend brushing at least 2 minutes twice a day.

## Quadpacer

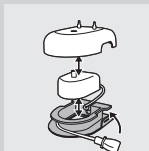


- The Quadpacer is an interval timer that has a short beep and pause to remind you to brush the 4 sections of your mouth. Depending on the brushing mode you have selected, the Quadpacer beeps at different intervals during the brushing cycle. See sections 'Brushing instructions' and 'Brushing modes' in chapter 'Using your Sonicare'. The Quadpacer feature on this model has been activated. To deactivate or reactivate the Quadpacer feature:

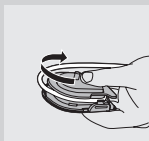
- 1** Place the handle with a brush head attached on the plugged-in charger.
- 2** Press and hold the mode button for 2 seconds.
  - ▶ You hear 1 beep to indicate the Quadpacer has been deactivated or you hear 2 beeps to indicate the Quadpacer has been activated.

### Cord wrap on deluxe charger (select models)

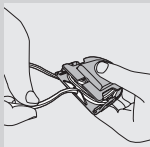
If your model includes the deluxe charger cover and base, the travel charger is pre-installed inside the cover. If you want to shorten the power cord, you can store excess cord in the cord wrap feature built into the charger base.



- 1** To separate the charger cover from the charger base, press the two gray snap bars on the charger base and pull the white charger cover upwards.



- 2** Wrap excess power cord around the gray charger base as shown in the picture. Be sure to wrap the cord on the inside of the two snap levers.



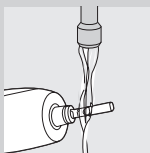
- 3** When you have stored the excess cord, guide the power cord through the small groove in the rear of the gray charger base.
- 4** To reattach the charger cover, press it down over the charger base until it snaps into place.

*Tip: For extra convenience during travel, you can remove the travel charger and use it without the charger cover and charger base.*

## Cleaning

Do not clean the brush head, handle, travel charger and charger cover in the dishwasher.

### Toothbrush handle

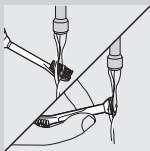


- 1** Remove the brush head and rinse the metal shaft area with warm water.

Do not push on the rubber seal on the metal shaft with sharp objects, as this may cause damage.

- 2** Use a damp cloth to wipe the entire surface of the handle.

### Brush head



- 1** Rinse the brush head and bristles after each use.
- 2** Remove the brush head from the handle and rinse the brush head connection at least once a week with warm water.

## Charger

- 1 Unplug the charger.
- 2 Use a damp cloth to wipe the surface of the charger.

## Storage

- If you are not going to use the product for an extended period of time, unplug it from the electrical outlet, clean it and store it in a cool and dry place away from direct sunlight. You can use the cord wrap to store the power cord in an organized manner.

## Replacement

### Brush head

- Replace Sonicare brush heads every 3 months to achieve optimal results.
- Use only compatible Sonicare replacement brush heads.

## Disposal



- The rechargeable battery inside your Sonicare cannot be replaced, but is easy to remove for recycling. At the end of product life and prior to disposal, please remove the rechargeable battery from the handle by following the instructions below.



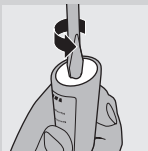
- Do not throw away the appliance with the normal household waste at the end of its life, but hand it in at an official collection point for recycling. By doing this, you help to preserve the environment.
- If you have any recycling questions, contact your local waste management office.

## Removing the rechargeable battery

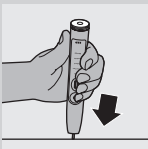
Please note that this process is not reversible.

To remove the rechargeable battery, you need a flat-head (standard) screwdriver. Observe basic safety precautions when you follow the procedure outlined below. Be sure to protect your eyes, hands, fingers, and the surface on which you work.

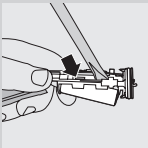
**1** To deplete the rechargeable battery of any charge, remove the handle from the charger, turn on the Sonicare and let it run until it stops. Repeat this step until you can no longer switch on the Sonicare.



**2** Insert a screwdriver into the slot located at the bottom of the handle and turn counterclockwise to release the bottom cap.



**3** Hold the handle upside down and push down on the shaft to release the internal components of the handle.



**4** Insert the screwdriver under the circuit board, next to the battery connections, and twist to break the connections. Remove the circuit board and pry the battery from the plastic carrier.

The rechargeable battery can now be recycled and the rest of the product discarded appropriately.

## Guarantee and service

Philips guarantees its products for two years after the date of purchase. Defects due to faulty materials and workmanship will be repaired or replaced at Philips expense provided that convincing proof of purchase in the qualifying period is provided.

Contact our Consumer Care Center at 1-800-682-7664 (North America), outside North America contact your local Philips Consumer Care Center.

Internet information: [www.sonicare.com](http://www.sonicare.com) (North America) or [www.philips.com](http://www.philips.com) (outside North America).

## WARRANTY EXCLUSIONS

What is not covered under warranty:

- Brush heads
- Damage caused by misuse, abuse, neglect, alterations or unauthorized repair.
- Normal wear and tear, including chips, scratches, abrasions, discoloration or fading.

## IMPLIED WARRANTIES

ANY IMPLIED WARRANTIES, INCLUDING IMPLIED WARRANTIES OF MERCHANTABILITY AND FITNESS FOR A PARTICULAR PURPOSE, SHALL BE LIMITED TO THE DURATION OF THE EXPRESS WARRANTIES SET FORTH ABOVE. IN SOME STATES LIMITATIONS ON DURATION OF IMPLIED WARRANTIES DO NOT APPLY.



**LIMITATION OF REMEDIES**

---

IN NO EVENT SHALL PHILIPS OR ANY OF ITS AFFILIATED OR SUBSIDIARY COMPANIES BE LIABLE FOR ANY SPECIAL, INCIDENTAL OR CONSEQUENTIAL DAMAGES BASED UPON BREACH OF WARRANTY, BREACH OF CONTRACT, NEGLIGENCE, TORT, OR ANY OTHER LEGAL THEORY. SUCH DAMAGES INCLUDE, WITHOUT LIMITATION, LOSS OF SAVINGS OR REVENUE; LOSS OF PROFIT; LOSS OF USE; THE CLAIMS OF THIRD PARTIES INCLUDING, WITHOUT LIMITATION, DENTISTS AND DENTAL HYGIENISTS; AND COST OF ANY SUBSTITUTE EQUIPMENT OR SERVICES. SOME STATES DO NOT ALLOW THE EXCLUSION OR LIMITATION OF INCIDENTAL OR CONSEQUENTIAL DAMAGES.







[www.philips.com/Sonicare](http://www.philips.com/Sonicare)

©2013 Koninklijke Philips Electronics NV (KPENNV). All rights reserved.  
PHILIPS and the Philips shield are registered trademarks of KPENNV.  
Easy-start, Quadpacer, Sonicare and the Sonicare logo are trademarks  
of Philips Oral Healthcare, Inc. and/or KPENNV.

Protected by U.S. and international patents. Other patents pending.  
Reg. U.S. Pat. & Tm. Off.



100% recycled paper  
100% papier recyclé

4235.020.6876.1