

USER MANUAL FOR MOBILE EDITION (FLIP ME)

Contents

1	FLIP MOBILE EDITION (ME) OVERVIEW	3
2	FLIP ME SOLUTION.....	3
2.1	INSTALLATION PROCEDURE	3
2.2	LOGIN PROCESS	5
2.3	MARKET WATCH	5
2.3.1	<i>Add Symbol.....</i>	<i>6</i>
2.3.2	<i>Remove Scripts.....</i>	<i>7</i>
2.4	INDEX.....	7
2.5	FAST ORDER	8
2.6	TRADE MENU	9
2.7	SELL ORDER.....	10
2.7.1	<i>Order Confirmation</i>	<i>10</i>
2.7.2	<i>Exchange Confirmation</i>	<i>10</i>
2.8	ORDER STATUS	10
2.8.1	<i>Order Details.....</i>	<i>12</i>
2.9	OFFLINE ORDER STATUS.....	12
2.10	TRADE BOOK	12
2.11	INTRADAY CHART	13
2.12	BUYING POWER	14
2.12.1	<i>Buying Power Details.....</i>	<i>14</i>
2.13	PORTFOLIO	15
2.13.1	<i>Portfolio Details</i>	<i>15</i>
2.14	SNAP QUOTE.....	15
2.15	MARKET BY PRICE.....	16
2.16	PAYOUT	17
2.17	TRADING IDEAS	17
2.18	SETTINGS.....	18
2.19	CHANGE PASSWORD	18
2.20	MARKET STATUS	19
2.21	ABOUT.....	19

1 FLIP MOBILE EDITION (ME) OVERVIEW

FLIP ME is a mobile application featuring portable services. Flip ME now have an inbuilt online Trading facility, allowing you to Trade via your mobile with complete comfort while on the move, in a secure environment. It also provides real-time market information such as Market By Price, Snap Quotes, Index and many more features such as Buying Power, Trading Ideas, Real Time Intraday Chart, Order Management and Payout Facility.

FLIP ME provides highly flexible solutions to users while maintaining maximum security of information.

2 FLIP ME SOLUTION

The following are the features of the mobile edition:

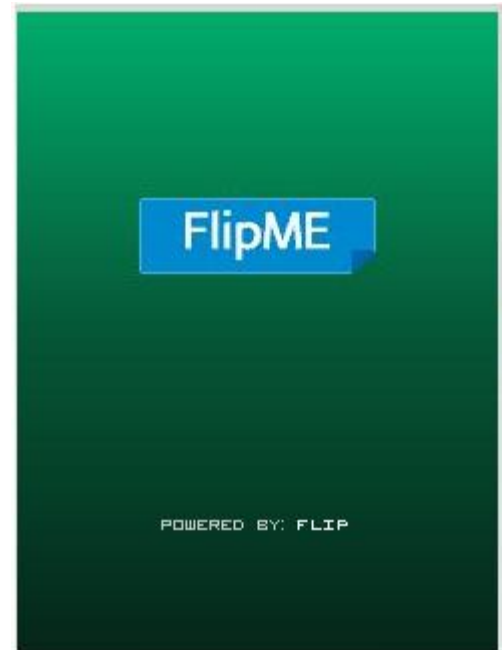
- Real Time Market watch
- Search/Add/Remove scrips
- Index Display
- Real-Time Intraday Chart
- Product wise Buying Power
- Product wise Buying power details
- Order Book
- Fast Orders
- Order Status
- Offline Order Status
- Trade Book
- Portfolio Information
- Payout facility
- Activate/ Deactivate Standing Instruction
- Snap quote
- Market by Price
- Trading Ideas
- Touch Screen Enabled

2.1 Installation Procedure

FlipME can be now installed in almost all Java supported and Anrdoid mobile handsets having GPRS enabled facility.

Requirements:

Required JAVA powered mobile phone with GPRS Facility. GPRS technology allows the user to access any web page or application from the mobile.



Procedure:

Select the browser in your mobile and enter the FlipMe application download web address. You will be prompted to download the application. By selecting the download button the application will get downloaded and installed.

When the installation process is over, the FLIP ME icon will get displayed, which indicates the presence of the application in the mobile. By pressing the icon, application will start. The below steps and screenshot denotes the general procedure, the exact method will differ according to the handset model.

Steps To Be Followed:

1. Open the mobile web browser.
2. Click on 'Go to web address'.
3. Enter the Flip ME application download website address.
4. Click on 'Yes' to start the installation process.
5. Click on 'Continue' to continue installing the application.
6. Select the Location to install the application.

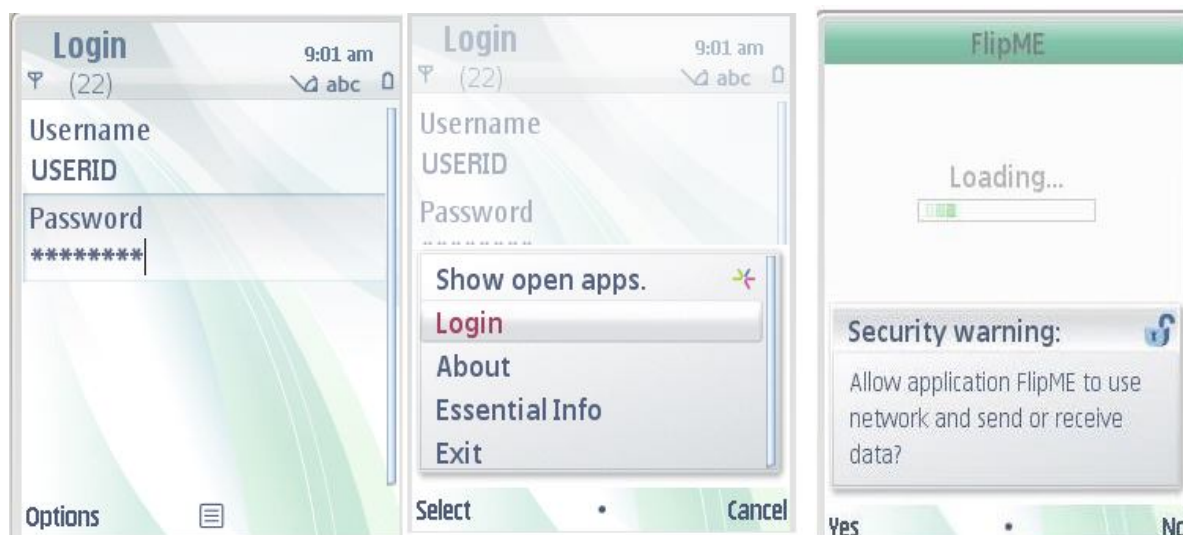


2.2 Login Process

With your Flip user id and password you can login to Flip Me. The communication from mobile device to the server application is through a secured SSL channel.

Steps To Be Followed:

1. Navigate in to the relevant fields to enter your user name/ trade code and password.
2. To move the control from one text box to another use Up and Down arrow keys.
3. Click on the options menu and then select 'Login' to continue login.
4. The application will prompt for Network Access as shown in the below mentioned screenshot 'Security Warning' - click 'Yes' to allow the application to use the network and send or receive data. It is compulsory to allow the application to access the network to login successfully.



2.3 Market watch

While logging in to the application you will be directed to the Market watch screen. Market watch allows you to view the real time streaming data from the exchange.

The user can add instruments to view real time information such as Last Traded Price and % change. Up to 10 scrips can be added in the market watch.

Market Watch		
Symbol	LTP	Chg
N▲GEOJITBNPP	34.75	+0.14
N▲REL CAPITAL	848.05	+2.65
N▲REL GOLD	1843.60	+0.10
N▲REL IANCE	1095.00	+0.42
N▼ACC	1012.10	-1.21
N▲REL IGARE	483.00	+1.04
N▲REL INFRA	1072.85	+1.04
N▲REL MEDIA	263.10	+1.03
NSE▼6096.30 (-9.50)		
BSE▼18384.71 (-9.58)		
Menu	09:40	MBP

The menu button from market watch provides various features such as:-

- **Fast order**
- **Trade**
- **Watch**
- **View**
- **Hide index**
- **Payout**
- **More**
- **Exit Flip ME**

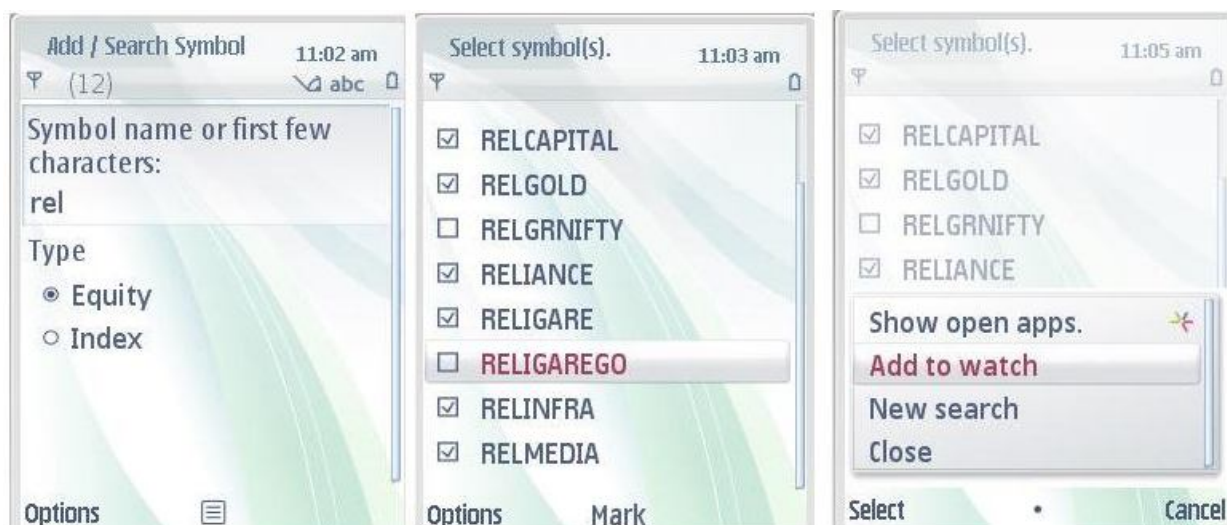
2.3.1 Add Symbol

Instruments may be added to the watch as desired using the Add Symbol feature. The user is required to select the venue and add the symbol appropriately.

Steps to Be Followed:

1. Go to menu>>Watch and select the option "Add symbol".
2. Select the venue and specify the symbol name or at least the first two letters of the scrip name in the search window.
3. Click on the add button. The scrip name will get added on market watch. If the first two letters of the scrip name are entered, then a list of scrips starting with the specified letters will be displayed. The required scrip can be selected from that list and added to the market watch.³





2.3.2 Remove Scrips

This option enables user to remove a particular scrip from the market watch.

Steps To be followed:

1. Select the scrip to be deleted from the market watch.
2. Click on Remove Symbol from "Menu >> Watch" to delete the selected scrip.



2.4 Index

Market Indices like Nifty and Sensex can be viewed on the market watch screen of Flip Me. The short cut key for enabling indices is "4".

Steps To Be Followed:

1. From the menu, select the option "Show Index" to display the index at the bottom of the screen.
2. From the menu, select the option "Hide Index" to hide the index at the bottom of the screen.

Market Watch		
Symbol	LTP	Chg
N+GEOJITBNPP	34.50	-0.57
N+RELCAPITAL	849.70	+2.85
N+RELGOLD	1843.60	+0.10
N+RELIANCE	1096.70	+0.58
N+RELIGARE	482.00	+0.83
N+RELINFRA	1073.50	+1.10
N+RELMEDIA	263.00	+0.99
B+TIME		
NSE	6097.50	(-8.30)
BSE	18384.71	(-9.58)
Menu	11:29	MBP

Market Watch		
Symbol	LTP	Chg
N+GEOJITBNPP	34.50	-0.57
N+RELCAPITAL	850.00	+2.88
N+RELGOLD	1843.60	+0.10
N+RELIANCE	1097.90	+0.69
N+RELIGARE	482.00	+0.83
N+RELINFRA	1073.50	+1.10
N+RELMEDIA	263.00	+0.99
B+TIME		
NSE	6097.50	(-8.30)
BSE	18384.71	(-9.58)
Menu	11:29	MBP

Market Watch		
Symbol	LTP	Chg
N+GEOJITBNPP	34.50	-0.57
N+RELCAPITAL	850.60	+2.95
N+RELGOLD	1843.60	+0.10
N+RELIANCE	1098.50	+0.74
N+RELIGARE	482.10	+0.85
N+RELINFRA	1073.90	+1.13
N+RELMEDIA	263.60	+1.22
B+TIME		
NSE	6097.50	(-8.30)
BSE	18384.71	(-9.58)
Menu	11:29	MBP

2.5 Fast Order

This option enables user to place quick order entry. The orders can be placed, modified or cancelled as desired. The user is required to specify Order Type, Quantity and Price. The user also has the provision to configure the fast order. Short cut key for enabling this option is "6".

Steps To Be Followed:

1. From the menu, select the option "Fast Order" to place order.
2. Specify the Order Type, Quantity and Price.
3. In case the user selects the order type as " Buy ", the best sell price in market for that scrip will get displayed next to the " Limit Price (Best) " field; while on selecting the order type- " Sell ", the best buy price in market for that scrip will get displayed next to the " Limit Price (Best) " field.

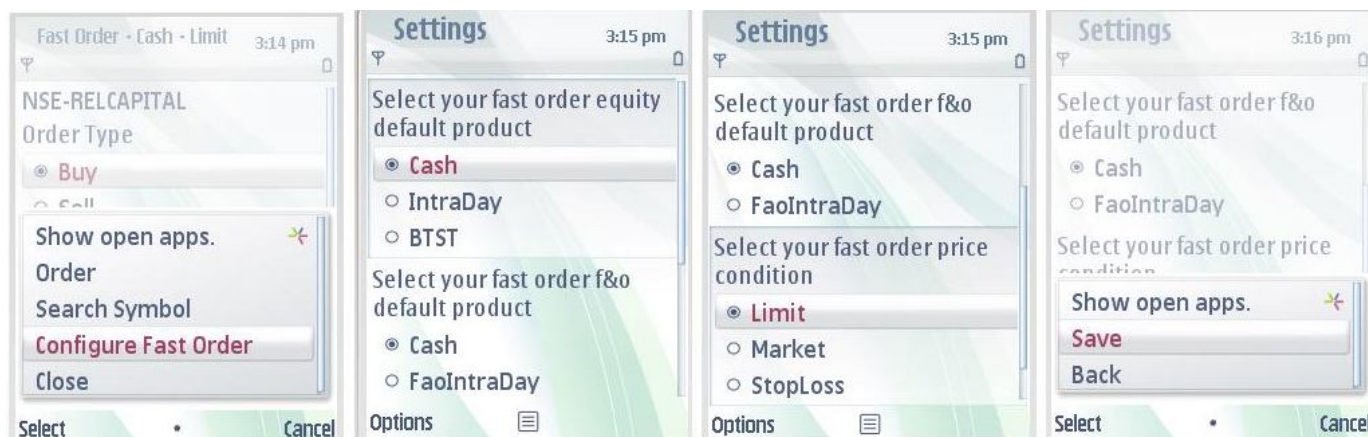
Market Watch		
Symbol	LTP	Chg
N+GEOJITBNPP	34.75	+0.14
N+RELCAPITAL	850.05	+2.65
N+RELGOLD	1843.60	+0.10
N+RELIANCE	1096.00	+0.42
N+RELIGARE	482.00	+1.04
N+RELINFRA	1073.35	+1.04
N+RELMEDIA	263.00	+1.03
B+TIME		
NSE	6096.30	(-9.50)
BSE	18384.71	(-9.58)
Menu	09:08	MBP

Fast Order - Cash - Limit		
(11)	11:07 am	123
NSE-RELIANCE		
Order Type		
<input checked="" type="radio"/> Buy <input type="radio"/> Sell		
Qty		
10		
Limit price (Best:1095.05)		
1000		
Options		

Fast Order - Cash - Limit		
(11)	11:07 am	123
NSE-RELIANCE		
Order Type		
<input checked="" type="radio"/> Buy <input type="radio"/> Sell		
Show open apps.		
Order		
Search Symbol		
Configure Fast Order		
Close		
Select		

To configure Fast Order:

1. Click on menu from Fast Order window and Select the option Configure Fast Order.
2. Select the product, price Condition and check/uncheck the option “Always show product selection”.
3. Click on save button to save the fast order configuration.

**2.6 Trade menu**

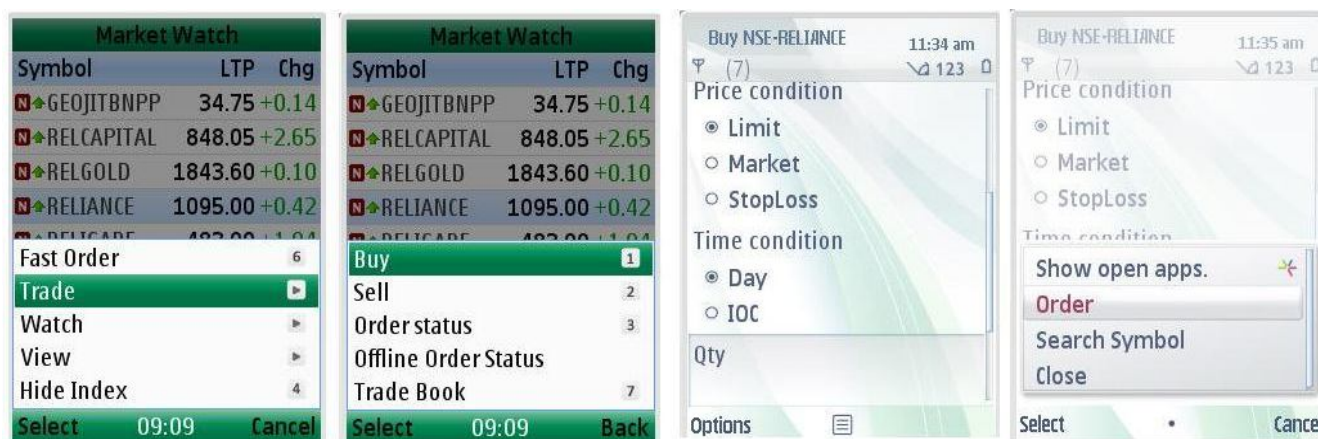
The orders can be placed, modified or cancelled as desired using this option.

Buy Order

Shortcut key “1” can be used for placing buy order from market watch

Steps To Be Followed:

1. From the menu >>Trade, select the option “Buy” to place buy order.
2. Specify the details such as Time condition, Price Condition, Quantity and Price in corresponding fields and then click on order

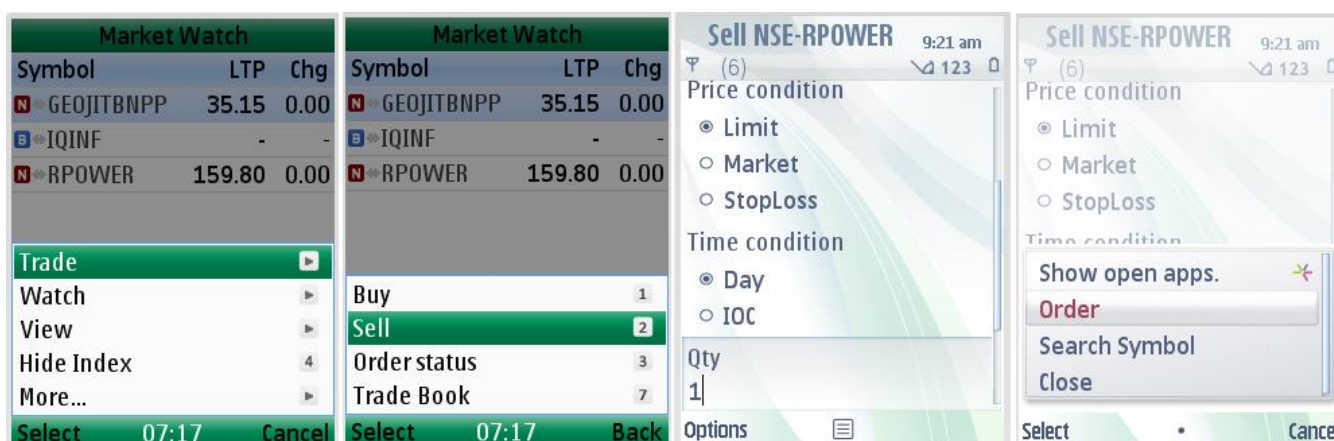


2.7 Sell Order

Shortcut key "2" can be used for placing Sell order from market watch.

Steps To Be Followed:

1. From the menu >>Trade, select the option "sell" to place sell order.
2. Specify details such as Time condition, Price Condition, Quantity and Price in the corresponding fields and then click on order.



2.7.1 Order Confirmation

Once the details are filled & submitted, the confirmation window will get displayed.

In case the user needs to make any modifications in the order to be placed, the option "Back" can be used to make necessary changes in the order.

Confirm New Order	
Sell	
NSE RPOWER	
Limit Order	
Price	175
Qty	1
Product	Cash
Series	EQ
Time condition	Day
Confirm	07:19 Back

2.7.2 Exchange Confirmation

After checking the order details, click on the "Confirm" button, and the order will be sent to the exchange and upon successful submission of the order, an "Order confirmation Message" will be displayed.

2.8 Order Status

The user can view the status of orders placed on the Order Status window. The user has the provision to modify or cancel the orders which are in "Confirm" status, by enabling modify and cancel option from the menu.

The user may also use the shortcut key "3" from Market Watch to view the Order Status window.

Market Watch			Select a status			Order Status - ALL		
Symbol	LTP	Chg	ALL			N MARUTI	1547.00	
N+GEOJITBNPP	34.75	+0.14	PEND			Buy.PEND		
N+RELCAPITAL	848.05	+2.65	SE			LMT:CASH	1@1.00	
N+RELGOLD	1843.60	+0.10	CONF			N ACC	1012.10	
N+RELIANCE	1095.00	+0.42	EXE			Sell.PEND		
N+RELCAP	482.00	+1.04	PEXE			LMT:INTRAD	1@1.00	
Buy		1	PEXECAN			N ABB	907.00	
Sell		2	CAN			Buy.PEND		
Order status		3	REJ			LMT:BTST	1@1.00	
Offline Order Status			CLBV			N NFTYMCAP50	-	
Trade Book		7	PECLBV			FIDX	0/JUN/2011	
Select	09:33	Back	Select	09:33	Close	Menu	09:33	Refresh

Steps To Be Followed:

1. From the menu>>Trade, select the option "Order Status".
2. Select the Status to filter orders as per the current status, can select option 'All' if all type of orders should appear.
3. The status of order placed by the client will be displayed as shown in the above screenshot.
4. Under Menu option, user can get sub options such as Modify Order, Cancel Order, Placing Fast Order, MBP and Order Details.

Order Status - ALL			Order Status - ALL		
N MARUTI	1547.00		N MARUTI	1547.00	
Buy.PEND			Buy.PEND		
LMT:CASH	1@1.00		LMT:CASH	1@1.00	
N ACC	1012.10		N ACC	1012.10	
Sell.PEND			Sell.PEND		
LMT:INTRAD	1@1.00		LMT:INTRAD	1@1.00	
Modify Order		1	Modify Order		1
Cancel Order		2	Cancel Order		2
Fast Order		6	Fast Order		6
MBP		3	MBP		3
Order details		5	Order details		5
Select	09:34	Cancel	Select	09:35	Cancel

5. Short cut keys available in "Order Status"
 - "1" for modification.
 - "2" for cancellation.
 - "6" for placing Fast Order.
 - "3" for getting "Market By Price".
 - "5" for Order details

Order details	
Order Id	
Trans Id	11156209
Product	IntraDay
Venue	NSE
Symbol	ACC
Buy/Sell	Sell
Status	PEND
Order Type	NEW ORDER
Qty	1
Price condition	LMT
Time condition	DAY
Close	09:35

2.8.1 Order Details

The detailed information of each order placed can be viewed using the Order Details option in Order Status window. The same will include the details like Trans ID, Product type, Venue, Symbol, Buy/Sell, Status, Order Type , Price condition etc.

Steps To Be Followed:

1. Select an order and choose the Order Details from Menu option or press short key ' 5 '.

2.9 Offline order status

The details of the offline orders can be viewed as a report through this option.

Steps To Be Followed:

1. Select the option "Offline Order Status" from "Market Watch – Menu - Trade".
2. Orders can be modified or cancelled by selecting appropriate option from "Menu" in "Offline Order Status" window.
3. Short cut keys "1" & "2" can be used for modification and cancellation respectively.

Market Watch	
Symbol	LTP Chg
N+GEOJITBNPP	34.75 +0.14
N+REL CAPITAL	848.05 +2.65
N+REL GOLD	1843.60 +0.10
N+RELIANCE	1095.00 +0.42
N+RELICARE	482.00 +1.04
Buy	1
Sell	2
Order status	3
Offline Order Status	
Trade Book	7
Select	09:36 Back

Offline Order Status	
B DABUR	114.80
Sell.SAVED	
LMT:CASH	1@1.00
N MARUTI	1547.00
Buy.SAVED	
LMT:CASH	1@1.00
N USDINR	-
OCUR 41.00	8/JUN/2011
Buy.SAVED	
LMT:CASH	1@1.0000
N USDINR	-
OCUR 41.00	8/JUN/2011
Menu	09:36 Refresh

Offline Order Status	
B DABUR	114.80
Sell.SAVED	
LMT:CASH	1@1.00
N MARUTI	1547.00
Buy.SAVED	
LMT:CASH	1@1.00
N USDINR	-
Modify Order	1
Cancel Order	2
MBP	3
Close	4
Select	09:37 Cancel

2.10 Trade Book

Summary of all executed orders placed by the client can be viewed through the option "Trade Book".

"Show Details" option in the Trade Book window provides the user with the details of the executed trades.

Steps To Be Followed:

1. From the menu >>Trade, select the option "Trade Book".
2. The summary of the trades that have been executed will get displayed.
3. Show Details option enables the user to view the details of the executed trades.
4. From the Menu button, user can Refresh or go back to the Market Watch.

Trade Book - CSU005	Trade Book - CSU005	Trade Book - CSU005	Trade Book - CSU005
N ABB 2@1.00 N CAIRN 1@1.00 N ROLTA 1@1.00 N 75@2496.75 NFTYMCAP5C FUTIDX 2011-06-30 00:00:00.C N ABAN 500@579.55 FUTSTK 2011-06-30 00:00:00.C Menu 12:43 Expand	N ABB 2@1.00 CASH Bought: 2@1.00 N CAIRN 1@1.00 CASH Bought: 1@1.00 N ROLTA 1@1.00 CASH Bought: 1@1.00 N 75@2496.75 NFTYMCAP5C FUTIDX 2011-06-30 00:00:00.C Menu 12:43 Summary	N ABB 2@1.00 CASH Bought: 2@1.00 N CAIRN 1@1.00 CASH Bought: 1@1.00 N ROLTA 1@1.00 Refresh Convert Product 1 Show details 5 Close 4 Select 12:45 Cancel	N ABB 2@1.00 Bought qty 2 Rcvd bought qty 0 Convtrd bought q 0 Sold qty 0 Recvd sold qty 0 Convtrd sold qty 0 CASH Bought: 1@1.00 N 75@2496.75 NFTYMCAP5C FUTIDX 2011-06-30 00:00:00.C Menu 12:45 Summary

2.11 Intraday Chart

Real Time graphical representation of scrip can be analyzed by enabling the chart option.

Short cut key from market watch is "5".

Steps To Be Followed:

1. From the menu >>Watch>>Chart to display the Intraday Chart.

Market Watch	Market Watch	Intraday Chart	Intraday Chart
Symbol LTP Chg N ▲GEOJITBNPP 34.75 +0.14 B ▲IQINF - - N ▲RPOWER 161.15 +0.53 Fast Order 6 Trade ▶ Watch ▶ View ▶ Hide Index 4 Select 08:58 Cancel	Symbol LTP Chg N ▲GEOJITBNPP 34.95 +0.72 N ▲REL CAPITAL 854.00 +3.37 N ▲ACC 1017.50 -0.68 N ▲REL GOLD 1843.35 +0.08 N ▲RELIANCE 1097.70 +0.67 N ▲RELIGARE 490.00 +2.51 Add Symbol Remove Symbol Chart 5 Select 11:42 Back	N ACC 1017.60 1016.00@10:05 1021.75 1018.95 1016.15 1013.35 1010.55 09:46 09:58 10:10 Menu 11:40 Refresh	N ACC 1017.25 1016.00@10:05 1021.75 1018.95 1016.15 Buy 1 Sell 2 Search 3 Close 4 Select 11:40 Cancel

2.12 Buying Power

Customers can view their product wise buying power by selecting “view buying power” option from the Menu.

Steps To Be Followed:

1. From the menu >> View, select the option “Buying Power”.
2. Refresh option enables the user to refresh the Buying Power details.

Market Watch			Market Watch			Buying Power	
Symbol	LTP	Chg	Symbol	LTP	Chg	Product	BP
N▲GEOJITBNPP	34.75	+0.14	N▲GEOJITBNPP	34.75	+0.14	Cash	654544068.80
N▲RELCAPITAL	848.05	+2.65	N▲RELCAPITAL	848.05	+2.65	Intraday	999897621.80
N▲RELGOLD	1843.60	+0.10	N▲RELGOLD	1843.60	+0.10	BTST	999897621.80
N▲RELIANCE	1095.00	+0.42	N▲RELIANCE	1095.00	+0.42	MTF	999897621.80
N▲RELIGARE	483.00	+1.04	N▲RELIGARE	483.00	+1.04	FA0Intraday	999897621.80
Fast Order 6			Buying Power 8			FOFutures	999897621.80
Trade ▶			Portfolio 9			FOOptions	999897621.80
Watch ▶			Trading Ideas			CDFutures	999897621.80
View ▶			Snap Quote			CDOptions	999897621.80
Hide Index 4			Select 09:11 Back			Menu 09:48 Refresh	
Select 09:10 Cancel							

2.12.1 Buying Power Details

Details of Buying Power can be viewed from the option “Menu -> Details” or by pressing a selected row in the Buying Power window.

Buying Power		Buying Power		Cash		
Product	BP	Product	BP	Items	Initial	Used
Cash	654544068.80	Cash	654544068.80	PENDINGPURCHASE	00	00
Intraday	999897621.80	Intraday	999897621.80	POOLPENDING	00	00
BTST	999897621.80	BTST	999897621.80	HOLDINGVALUE	00	00
MTF	999897621.80	MTF	999897621.80	HOLDINGVALUEFORFAO	00	00
FA0Intraday	999897621.80	FA0Intraday	999897621.80	DEPOSIT	00	00
FOFutures	999897621.80	FOFutures	999897621.80	CASHPANDL	00	00
FOOptions	999897621.80	FOOptions	999897621.80	INTRADAYPAN	00	00
CDFutures	999897621.80	Details 5		Close 09:48		
CDOptions	999897621.80	Close 4				
Menu 09:48 Refresh		Select 09:48 Cancel				

2.13 Portfolio

The portfolio details of the client also can be viewed using the below window. The option to navigate to the portfolio window is available in the main menu.

Go to Menu >>View >> Portfolio

Market Watch		
Symbol	LTP	Chg
N▲REL CAPITAL	854.75	+3.46
N▲ACC	1018.00	-0.63
N▲REL GOLD	1843.45	+0.09
N▲RELIANCE	1098.80	+0.77
N▲RELIGARE	490.00	+2.51
N▲RELINERA	1076.00	+1.22
Buying Power		8
Portfolio		9
Trading Ideas		
Snap Quote		
Select	11:45	Back

Portfolio	
Rs.4503.97	
Symbol	NetQty@MktRate
N GEOJITBNPP	27@24.15
B IQINF	424@2.38
N RPOWER	24@118.45
Menu	
10:10	Expand

2.13.1 Portfolio Details

The Details of scrips held by the client can be viewed from the portfolio window.

Portfolio	
Rs.4503.97	
Symbol	NetQty@MktRate
N GEOJITBNPP	27@24.15
B IQINF	424@2.38
N RPOWER	24@118.45
Menu	
10:10	Expand

Portfolio	
Rs.4503.97	
Symbol	NetQty@MktRate
Product	MktVal
N GEOJITBNPP	27@24.15
CASH	652.05
B IQINF	424@2.38
CASH	1009.12
N RPOWER	24@118.45
CASH	2842.80
Menu	
10:12	Summary

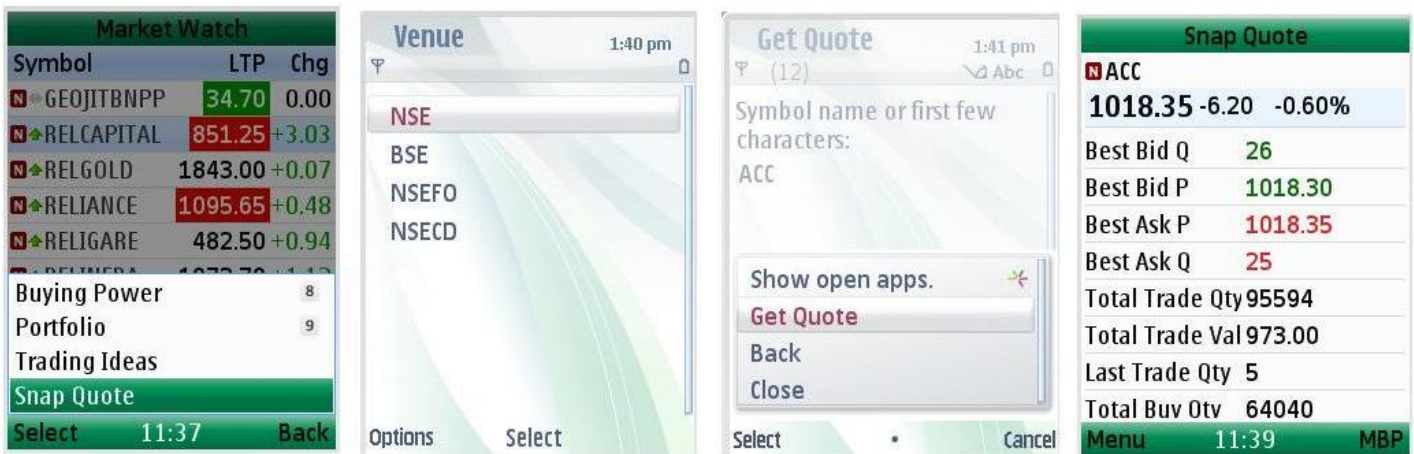
Portfolio	
Rs.4503.97	
Symbol	NetQty@MktRate
N GEOJITBNPP	27@24.15
B IQINF	424@2.38
Buy more	
1	
Sell	
2	
Refresh	
Details	
5	
Turn-on AutoRefresh	
6	
Select	
10:11	Cancel

2.14 Snap Quote

Details such as Best Buy Price, Best Buy Quantity, Best Sell Price and Best Sell Quantity can be viewed in the Snap Quote option.

Steps To Be Followed:

1. From the menu >> View, select the option "Snap Quote".
2. Enter the scrip name or first few letters of the scrip and select the option "Get Quote". A minimum of 2 characters must be specified.
3. Refresh & Back Option available in the "Menu" enable user to refresh the details of selected scrips or to go back to Market Watch.
4. Search option enables user to get Snap Quote of new scrip.

**2.15 Market by Price**

Real time Market by Price of a particular scrip in market watch can be viewed in "MBP".

Steps To Be Followed:

1. Select the required scrip from the market watch.
2. Enable the option "MBP" from the bottom right corner of the Market Watch window.
3. Details such as Bid Quantity, Bid Price, Ask Price and Ask Quantity of the selected scrip will be displayed.
4. User can move back to the watch by pressing left/ right arrow.
5. Fast Order can also be placed from the MBP by enabling fast order option at the bottom right corner of the screen.

Market Watch			Market By Price			
Symbol	LTP	Chg	RELIANCE 1095.00			
N+GEOJITBNPP	34.75	+0.14	Bid Q	Bid P	Ask P	Ask Q
N+RELCAP	848.05	+2.65	649	1095.00	1095.05	130
N+RELGOLD	1843.60	+0.10	840	1094.75	1095.15	50
N+RELIANCE	1095.00	+0.42	1	1094.70	1095.30	235
N+RELIGARE	483.00	+1.04	2	1094.55	1095.40	255
N+RELINFRA	1072.85	+1.04	19	1094.50	1095.45	118
N+RELMEDIA	263.10	+1.02	TBQty: 244714 TSQty: 380104			
NSE 6096.30 (-9.50)			TTQty: 497938			
BSE 18384.71 (-9.58)			Day H/L: 1096.90 - 1087.10			
Menu 09:03 MBP			Open: 1095.00			

2.16 Payout

Payout option enables the client to place a request for funds from the trading account.

For Payout

- From "Menu – Payout", enter the required amount and select the back button; then enable the transfer button to place the payout request.

Market Watch			Market Watch		
Symbol	LTP	Chg	Symbol	LTP	Chg
N+GEOJITBNPP	34.75	+0.14	N+GEOJITBNPP	34.75	+0.14
N+RELCAPITAL	848.05	+2.65	N+RELCAPITAL	848.05	+2.65
N+RELGOLD	1843.60	+0.10	N+RELGOLD	1843.60	+0.10
N+RELIANCE	1095.00	+0.42	N+RELIANCE	1095.00	+0.42
N+RELIGARE	483.00	+1.04	N+RELIGARE	483.00	+1.04
N+RELINFRA	1072.85	+1.04	N+RELINFRA	1072.85	+1.04
N+RELMEDIA	263.10	+1.02	N+RELMEDIA	263.10	+1.02
View			Alert		
Hide Index 4			New payout		
Payout			Payout status		
More...			Select 09:12 Back		
Exit FlipME					

2.17 Trading Ideas

Trading Ideas will be provided by the research team. Whenever a trading idea is provided, it will get displayed as a pop-up message in the market watch window and will vanish automatically in 2/3 seconds.

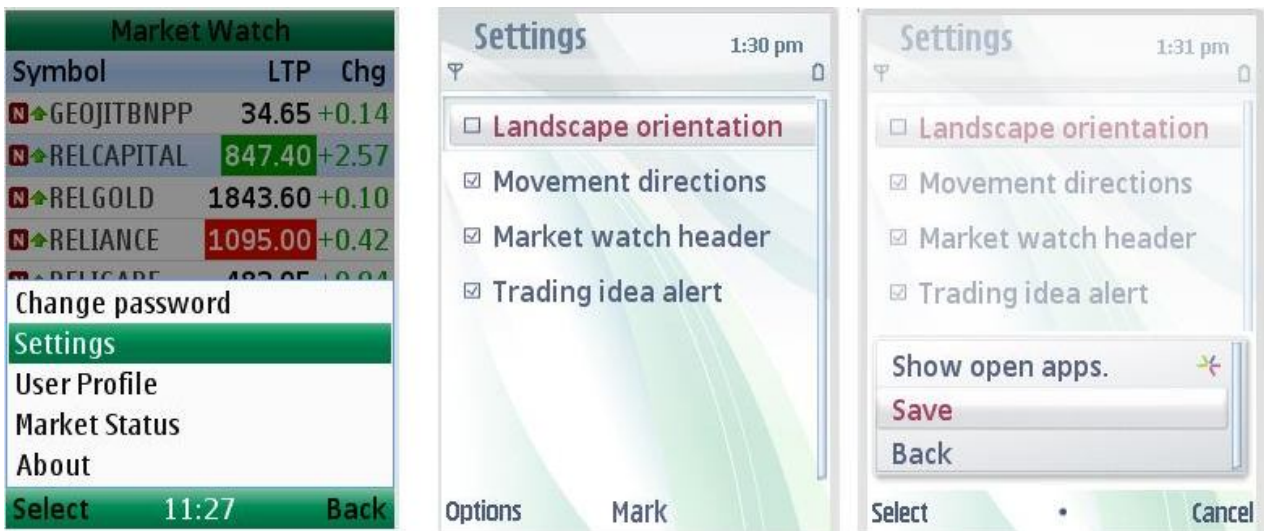
User can instantly hide the trading idea from the market watch window by enabling the hide option.

For later references: User can view the trading information given by the broker by selecting the option "Trading Ideas" from "Menu – View".

2.18 Settings

For customizing the application behavior, go to Menu >> Settings.

- **Trading Idea Alert:** The user can disable the trading idea pop- up by un- checking the “Trading idea alert”. The default settings will pop- up the messages.
- **Landscape Orientation:** To Enable Landscape view of the application check the “Landscape Orientation”. Shortcut key for enabling the same is “0” (ZERO).
- **Movement Direction:** The User can enable/ disable the market up and down indicator in the market watch by ticking/ Un- ticking the “Movement directions”.
- **Market watch header:** This option enables the user to show/hide the header Market Watch in the home page.



2.19 Change Password

Once in 14 days it is mandatory (as per regulation) to change the login password for ensuring security. Password can be changed from “Menu – More – Change Password”.



2.20 Market Status

This option enables the user to view the current status of the market as shown in the below screenshot.



2.21 About

This option enables the user to find out details like Current Version, Company Information and Bytes Sent.