

NeroCmd

v1.7.0.0

User's Manual

**NeroCmd will only work with
a fully installed Nero version!**

1. Contents

1. Contents	2
2. License Agreement	3
3. Introduction	4
3.1. Motivation	4
3.2. Overview	4
3.3. Requirements	5
3.4. The NeroSDK Forum	5
4. Using Parameter Files	6
4.1. Execution With Parameter File	6
4.2. Parameter File Creation	6
5. Using NeroCmd	7
5.1. List Available Drives	7
5.2. Obtain Information About A Drive	7
5.3. List Drive Speeds	8
5.4. Obtain Information About A CD	9
5.5. List Audio Formats	9
5.6. Write Audio/ISO CD or ISO CD/DVD	10
5.7. Write Video CD	13
5.8. Write Super Video CD	14
5.9. Write Image	15
5.10. Write Freestyle CD	16
5.11. Read Audio Tracks	18
5.12. Erase CDRW/DVDRW Media	19
5.13. Eject CD	19
5.14. Load CD	20
5.15. Retrieve Image File Disc Information	20
5.16. Retrieve Version Information	20
6. Exit Code	21
7. Software Version History	22

2. License Agreement

IMPORTANT: PLEASE READ THE SOFTWARE LICENSE AGREEMENT ("LICENSE") CAREFULLY BEFORE USING THE SOFTWARE.

USING THE SOFTWARE INDICATES YOUR ACKNOWLEDGMENT THAT YOU HAVE READ THE LICENSE AND AGREE TO ITS TERMS.

The license agreement is contained in a text file, "NeroSDK_License.txt", to be found in the root folder of the installation package.

3. Introduction

3.1. Motivation

NeroCmd is a console application that facilitates the processing of commands understood by the *NeroAPI*.

This part of the documentation has been created for users who want to benefit from the functionality without having to understand the machinery inside. If, however, you should be interested in finding out more about the inner mechanics of the software you will find a detailed discussion in the “*NeroCmd Developer's Manual*”. That paper will give you enough information to let you to change the *NeroCmd* parser to fit your own, more refined requirements.

3.2. Overview

This paper will provide a comprehensive list of available options for *NeroCmd*, and examples of use. *NeroCmd* can perform the following tasks:

- List all available drives, speeds and formats
- Get CD info for a presently inserted CD into some drive
- Burn:
 - ISO DVD
 - ISO/Audio CD
 - Video CD
 - Super Video CD
 - CD from image
 - Freestyle CD
- Grab Audio tracks and store them in disk files (Digital Audio Extraction)
- Eject/Load CD from drive
- Erase CD Rewritable/ DVD Rewritable
- Display the Disc Information contained in an Image File
- Display NeroAPI version information

3.3. Requirements

NeroCmd will work on any platform which is fit for hosting **Nero 6.0.0.0**. *Nero* needs to be installed and licensed prior to using *NeroCmd*.

NeroCmd will not work with Linux.

You can obtain the latest version of *Nero* from <http://www.nero.com>.

3.4. The NeroSDK Forum

We provide a forum for all users of the *NeroSDK* to get in dialog with each other at <http://club.cdfreaks.com/forumdisplay.php?s=&forumid=73>. We will also monitor the messages from time to time and try to help where possible.

4. Using Parameter Files

Here is an example of how to create and use parameter files with *NeroCmd*.

Parameter files are quite handy when you frequently need to vary between different but fixed sets of command line options.

4.1. Execution With Parameter File

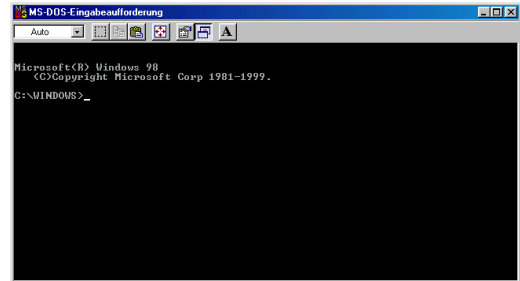
If you have an existing parameter file, open a Command Shell and change to the drive and directory where NeroCmd.exe is stored on your hard drive.

If NeroCmd.exe is located in d:\NeroCmd\ you would type:

```
d:<ENTER>
```

to change to drive D and then

```
cd NeroCmd<ENTER>
```



If for example the parameter file is named *ParameterFile.txt*, you would type

```
NeroCmd @ParameterFile.txt<ENTER>
```

(<ENTER> stands for pressing the ENTER key.)

4.2. Parameter File Creation

Let us imagine that we want to create a new parameter file, which has the same effect as using the following command:

```
NeroCmd --real --tao --close_session --import 0 --drivename e --write --iso test .\TestFiles\*.exe --disable_eject -error_log MyErrorLog.txt<ENTER>
```

Open Notepad or any other text editor that you prefer. Enter the following text and save it, e.g. as *ParameterFile.txt*. Now you will be able to use it, as described above.

```
; Parameter File for demonstration purposes
; Comments are started with a semicolon

--write      ; select write command
--real --tao ; no simulation, track at once
--close_session ; close session rather than entire disc
--import 0 ; import session 0 (0 is the first session)
--iso test .\TestFiles\*.exe ; volume name is "test". Files in "TestFiles"
--disable_eject --drivename e ; do not eject disc after burning
--error_log MyErrorLog.txt ; Give the error log a different name
```

5. Using NeroCmd

This application can read information about a CD, burn audio CDs, burn ISO CDs, burn mixed mode CDs, burn Video and Super Video CD, extract CDA tracks.

Open a command window (MS-DOS shell) and type "NeroCmd" followed by a command and in most cases a parameter list.

For example the following command will display information about the CD in drive D.

```
NeroCmd --cdinfo --drivename d
```

See the chapters below for valid parameter combinations. Square brackets indicate that a parameter is optional. However, when writing an Audio/ISO CD you have to supply at least one valid set of parameters.

5.1. List Available Drives

This command will display a formatted list of all available CD-ROM drives.

Command	Function	
<i>--listdrives</i>	List available drives	
	Parameters	Description
	<i>[--no_error_log]</i>	Do not log errors at all.
	<i>[--error_log <log filename>]</i>	Store NeroCmd error messages in <log filename>.
	<i>[--nero_log_timestamp]</i>	Adds a timestamp to the NeroAPI error log's file name. Useful for batch operations.
	<i>[--no_user_interaction]</i>	Allow the whole process to take place with no user interaction (no questions asked).
	<i>[@parameter_file]</i>	parameter_file contains command line arguments.

5.2. Obtain Information About A Drive

This command will display a detailed report of a drive's capabilities.

Command	Function	
<i>--driveinfo</i>	Obtain drive information	
	Parameters	Description
	<i>[--no_error_log]</i>	Do not log errors at all.
	<i>[--error_log <log filename>]</i>	Store NeroCmd error messages in <log filename>.
	<i>[--nero_log_timestamp]</i>	Adds a timestamp to the NeroAPI error log's file name. Useful for batch operations.
	<i>[--no_user_interaction]</i>	Allow the whole process to take place with no user interaction (no questions asked).
	<i>[@parameter_file]</i>	parameter_file contains command line arguments.
<i>--drivename <name></i>	<name> is either the "full name" of the drive or the drive letter.	

5.3. List Drive Speeds

This command will display the available read- and write speeds for a certain drive.

Command	Function	
<code>--get_speeds</code>	List Drive Speeds	
	Parameters	Description
	<code>[--no_error_log]</code>	Do not log errors at all.
	<code>[--error_log <log filename>]</code>	Store NeroCmd error messages in <log filename>.
	<code>[--nero_log_timestamp]</code>	Adds a timestamp to the NeroAPI error log's file name. Useful for batch operations.
	<code>[--no_user_interaction]</code>	Allow the whole process to take place with no user interaction (no questions asked).
	<code>[@parameter_file]</code>	parameter_file contains command line arguments.
	<code>--drivename <name></code>	<name> is either the "full name" of the drive or the drive letter.
	<code>[--media_type <type>]</code>	Specify a media type. To combine several media types use "+". Allowed types are media_cd media_ddcd media_dvd_m media_dvd_p media_dvd_any media_dvd_ram media_ml media_mrw media_no_cdr media_no_cdrw media_cdrw media_cdr media_dvd_rom media_cdrom media_no_dvd_m_rw media_no_dvd_m_r media_no_dvd_p_rw media_no_dvd_p_r media_dvd_m_r media_dvd_m_rw media_dvd_p_r media_dvd_p_rw media_fpacket media_vpacket media_packetw

5.4. Obtain Information About A CD

This command will display what kind of media the drive contains: CD-ROM, CD-R or CD-RW. It will also output additional information like CD title, free capacity, number of tracks, track details etc.

Command	Function	
<code>--cdinfo</code>	Obtain information about a CD	
	Parameters	Description
	<code>[--no_error_log]</code>	Do not log errors at all.
	<code>[--error_log <log filename>]</code>	Store NeroCmd error messages in <log filename>.
	<code>[--nero_log_timestamp]</code>	Adds a timestamp to the NeroAPI error log's file name. Useful for batch operations.
	<code>[--no_user_interaction]</code>	Allow the whole process to take place with no user interaction (no questions asked).
	<code>[@parameter_file]</code>	parameter_file contains command line arguments.
<code>--drivename <name></code>	<name> is either the "full name" of the drive or the drive letter.	

5.5. List Audio Formats

This command will list the available audio formats.

Command	Function	
<code>--listformats</code>	List audio formats	
	Parameters	Description
	<code>[--no_error_log]</code>	Do not log errors at all.
	<code>[--error_log <log filename>]</code>	Store NeroCmd error messages in <log filename>.
	<code>[--nero_log_timestamp]</code>	Adds a timestamp to the NeroAPI error log's file name. Useful for batch operations.
	<code>[--no_user_interaction]</code>	Allow the whole process to take place with no user interaction (no questions asked).
<code>[@parameter_file]</code>	parameter_file contains command line arguments.	

5.6. Write Audio/ISO CD or ISO CD/DVD

This function will burn ISO CDs/DVDs and Audio/ISO CDs, allowing settings like Rockridge format, UDF or import of ISO tracks.

Often referred to as CD EXTRA or CD Plus these Audio/ISO discs contain two sessions. The first session contains up to 98 audio tracks; the second session contains the data track. When played on an audio player, it only sees the first session and so does not try to play the data session.

Command	Function	
--write	Write Audio/ISO/Mixed Mode CD/DVD	
	Parameters	Description
	<code>[--no_error_log]</code>	Do not log errors at all.
	<code>[--error_log <log filename>]</code>	Store NeroCmd error messages in <log filename>.
	<code>[--nero_log_timestamp]</code>	Adds a timestamp to the NeroAPI error log's file name. Useful for batch operations.
	<code>[--no_user_interaction]</code>	Allow the whole process to take place with no user interaction (no questions asked).
	<code>[@parameter_file]</code>	parameter_file contains command line arguments.
	<code>--drivename <name></code>	<name> is either the "full name" of the drive or the drive letter.
<code>[--media_type <type>]</code>	Specify a media type. To combine several media types use "+". Allowed types are media_cd media_ddcd media_dvd_m media_dvd_p media_dvd_any media_dvd_ram media_ml media_mrw media_no_cdr media_no_cdrw media_cdrw media_cdr media_dvd_rom media_cdrom media_no_dvd_m_rw media_no_dvd_m_r media_no_dvd_p_rw media_no_dvd_p_r media_dvd_m_r media_dvd_m_rw media_dvd_p_r media_dvd_p_rw media_fpacket media_vpacket media_packetw	

Command	Function																																																														
<code>--write</code>	Write Audio/ISO/Mixed Mode CD/DVD continued...																																																														
	<table border="1"> <thead> <tr> <th>Parameters</th> <th>Description</th> </tr> </thead> <tbody> <tr> <td><code>--output_image <filename></code></td> <td>Specify output image filename if image recorder is used to avoid prompting for filename.</td> </tr> <tr> <td><code>--real</code></td> <td>Forces the disk to be burned, if not specified the process is only simulated.</td> </tr> <tr> <td><code>--tao</code></td> <td>Disk is burned in TAO (Track At Once) mode, if not specified DAO (Disk At Once) is default.</td> </tr> <tr> <td><code>--artist <artist></code></td> <td>Supply artist's name for Audio CD.</td> </tr> <tr> <td><code>--title <title></code></td> <td>Supply Audio CD title.</td> </tr> <tr> <td><code>--read_speed <speed></code></td> <td><speed> is speed at which the audio tracks will be read in x150kb/s.</td> </tr> <tr> <td><code>--speed <speed></code></td> <td><speed> is speed at which the CD will be burned in x150kb/s.</td> </tr> <tr> <td><code>--speed_in_kbps <speed></code></td> <td><speed> is speed at which the CD will be burned in KB/s.</td> </tr> <tr> <td><code>--audio <file1> <file2> ...]</code></td> <td>Disk is burned with Audio information. A list of Audio files to burn is supplied. Allowed types are wav, mp3, wma and pcm.</td> </tr> <tr> <td><code>--cdextra</code></td> <td>CD Extra will arrange the ISO track behind the audio tracks in a separate session, so the CD can be played by regular Audio CD players.</td> </tr> <tr> <td><code>--dvd</code></td> <td>Burn on DVD or DVDRW media. This option cannot be used in combination with Audio or mixed mode.</td> </tr> <tr> <td><code>--recursive</code></td> <td>Do a recursive file search.</td> </tr> <tr> <td><code>--use_allspace</code></td> <td>Use all space on the media.</td> </tr> <tr> <td><code>--import <session #></code></td> <td>Import a certain session. A session number can but does not have to follow the <code>--import</code> switch. If specified, it will be used as a session number to import (zero meaning first session). If nothing is specified, the last session will be imported.</td> </tr> <tr> <td><code>--iso <volumename></code></td> <td>Name the ISO-volume.</td> </tr> <tr> <td><code>--iso-no-joliet</code></td> <td>No long filenames.</td> </tr> <tr> <td><code>--iso-mode2</code></td> <td>Select ISO mode 2.</td> </tr> <tr> <td><code>--speedtest</code></td> <td>Test speed before burning.</td> </tr> <tr> <td><code>--enable_abort</code></td> <td>Notify which operations can and which cannot be aborted.</td> </tr> <tr> <td><code>--close_session</code></td> <td>Close session, not the whole disk.</td> </tr> <tr> <td><code>--detect_non_empty_cdrw</code></td> <td>Detect if burn process is to take place on a non-empty CDRW and offer to take certain actions.</td> </tr> <tr> <td><code>--force_erase_cdrw</code></td> <td>In combination with <code>--detect_non_empty_cdrw</code> this parameter will erase a non-empty CDRW without prompting the user.</td> </tr> <tr> <td><code>--cd_text</code></td> <td>Write CD Text (if supported by device).</td> </tr> <tr> <td><code>--underrun_prot</code></td> <td>Protect from underrun condition.</td> </tr> <tr> <td><code>--import_udf</code></td> <td>Import UDF format.</td> </tr> <tr> <td><code>--import_iso_only</code></td> <td>Import ISO only.</td> </tr> <tr> <td><code>--relax_joliet</code></td> <td>Relax joliet filename length limitations.</td> </tr> <tr> <td><code>--japanese_cd_text</code></td> <td>CD text is treated as Japanese CD text (must include <code>--cd_text</code> also).</td> </tr> <tr> <td><code>--prefer_rockridge</code></td> <td>Prefer Rockridge format.</td> </tr> <tr> <td><code>--use_rockridge</code></td> <td>Use Rockridge format.</td> </tr> </tbody> </table>	Parameters	Description	<code>--output_image <filename></code>	Specify output image filename if image recorder is used to avoid prompting for filename.	<code>--real</code>	Forces the disk to be burned, if not specified the process is only simulated.	<code>--tao</code>	Disk is burned in TAO (Track At Once) mode, if not specified DAO (Disk At Once) is default.	<code>--artist <artist></code>	Supply artist's name for Audio CD.	<code>--title <title></code>	Supply Audio CD title.	<code>--read_speed <speed></code>	<speed> is speed at which the audio tracks will be read in x150kb/s.	<code>--speed <speed></code>	<speed> is speed at which the CD will be burned in x150kb/s.	<code>--speed_in_kbps <speed></code>	<speed> is speed at which the CD will be burned in KB/s.	<code>--audio <file1> <file2> ...]</code>	Disk is burned with Audio information. A list of Audio files to burn is supplied. Allowed types are wav, mp3, wma and pcm.	<code>--cdextra</code>	CD Extra will arrange the ISO track behind the audio tracks in a separate session, so the CD can be played by regular Audio CD players.	<code>--dvd</code>	Burn on DVD or DVDRW media. This option cannot be used in combination with Audio or mixed mode.	<code>--recursive</code>	Do a recursive file search.	<code>--use_allspace</code>	Use all space on the media.	<code>--import <session #></code>	Import a certain session. A session number can but does not have to follow the <code>--import</code> switch. If specified, it will be used as a session number to import (zero meaning first session). If nothing is specified, the last session will be imported.	<code>--iso <volumename></code>	Name the ISO-volume.	<code>--iso-no-joliet</code>	No long filenames.	<code>--iso-mode2</code>	Select ISO mode 2.	<code>--speedtest</code>	Test speed before burning.	<code>--enable_abort</code>	Notify which operations can and which cannot be aborted.	<code>--close_session</code>	Close session, not the whole disk.	<code>--detect_non_empty_cdrw</code>	Detect if burn process is to take place on a non-empty CDRW and offer to take certain actions.	<code>--force_erase_cdrw</code>	In combination with <code>--detect_non_empty_cdrw</code> this parameter will erase a non-empty CDRW without prompting the user.	<code>--cd_text</code>	Write CD Text (if supported by device).	<code>--underrun_prot</code>	Protect from underrun condition.	<code>--import_udf</code>	Import UDF format.	<code>--import_iso_only</code>	Import ISO only.	<code>--relax_joliet</code>	Relax joliet filename length limitations.	<code>--japanese_cd_text</code>	CD text is treated as Japanese CD text (must include <code>--cd_text</code> also).	<code>--prefer_rockridge</code>	Prefer Rockridge format.	<code>--use_rockridge</code>	Use Rockridge format.
	Parameters	Description																																																													
	<code>--output_image <filename></code>	Specify output image filename if image recorder is used to avoid prompting for filename.																																																													
	<code>--real</code>	Forces the disk to be burned, if not specified the process is only simulated.																																																													
	<code>--tao</code>	Disk is burned in TAO (Track At Once) mode, if not specified DAO (Disk At Once) is default.																																																													
	<code>--artist <artist></code>	Supply artist's name for Audio CD.																																																													
	<code>--title <title></code>	Supply Audio CD title.																																																													
	<code>--read_speed <speed></code>	<speed> is speed at which the audio tracks will be read in x150kb/s.																																																													
	<code>--speed <speed></code>	<speed> is speed at which the CD will be burned in x150kb/s.																																																													
	<code>--speed_in_kbps <speed></code>	<speed> is speed at which the CD will be burned in KB/s.																																																													
	<code>--audio <file1> <file2> ...]</code>	Disk is burned with Audio information. A list of Audio files to burn is supplied. Allowed types are wav, mp3, wma and pcm.																																																													
	<code>--cdextra</code>	CD Extra will arrange the ISO track behind the audio tracks in a separate session, so the CD can be played by regular Audio CD players.																																																													
	<code>--dvd</code>	Burn on DVD or DVDRW media. This option cannot be used in combination with Audio or mixed mode.																																																													
	<code>--recursive</code>	Do a recursive file search.																																																													
	<code>--use_allspace</code>	Use all space on the media.																																																													
	<code>--import <session #></code>	Import a certain session. A session number can but does not have to follow the <code>--import</code> switch. If specified, it will be used as a session number to import (zero meaning first session). If nothing is specified, the last session will be imported.																																																													
	<code>--iso <volumename></code>	Name the ISO-volume.																																																													
	<code>--iso-no-joliet</code>	No long filenames.																																																													
	<code>--iso-mode2</code>	Select ISO mode 2.																																																													
	<code>--speedtest</code>	Test speed before burning.																																																													
	<code>--enable_abort</code>	Notify which operations can and which cannot be aborted.																																																													
	<code>--close_session</code>	Close session, not the whole disk.																																																													
	<code>--detect_non_empty_cdrw</code>	Detect if burn process is to take place on a non-empty CDRW and offer to take certain actions.																																																													
	<code>--force_erase_cdrw</code>	In combination with <code>--detect_non_empty_cdrw</code> this parameter will erase a non-empty CDRW without prompting the user.																																																													
	<code>--cd_text</code>	Write CD Text (if supported by device).																																																													
	<code>--underrun_prot</code>	Protect from underrun condition.																																																													
<code>--import_udf</code>	Import UDF format.																																																														
<code>--import_iso_only</code>	Import ISO only.																																																														
<code>--relax_joliet</code>	Relax joliet filename length limitations.																																																														
<code>--japanese_cd_text</code>	CD text is treated as Japanese CD text (must include <code>--cd_text</code> also).																																																														
<code>--prefer_rockridge</code>	Prefer Rockridge format.																																																														
<code>--use_rockridge</code>	Use Rockridge format.																																																														

Command	Function	
<i>--write</i>	Write Audio/ISO/Mixed Mode CD/DVD continued...	
	Parameters	Description
	<i>[--create_iso_fs]</i>	Create ISO file system.
	<i>[--create_udf_fs]</i>	Create UDF file system.
	<i>[--dvdvideo_realloc]</i>	Perform reallocation of files in VIDEO_TS directory.
	<i>[--disable_eject]</i>	Disables CD ejection after burn completion.
	<i>[--dvd_high_compatibility]</i>	Used for better compatibility of burned DVDs as at least 1GB will be written.
	<i>[--booktype_dvdrom]</i>	The booktype of a burned DVD will be set to DVDROM.
	<i>[--verify]</i>	Verify ISO filesystem after writing.
	<i>[--system_identifier <text>]</i>	"system identifier" of an ISO track.
	<i>[--volume_set <text>]</i>	"volume set" of an ISO track.
	<i>[--publisher <text>]</i>	"publisher" of an ISO track.
	<i>[--data_preparer <text>]</i>	"data preparer" of an ISO track.
	<i>[--application <text>]</i>	"application" of an ISO track.
	<i>[--copyright <text>]</i>	"copyright" of an ISO track.
<i>[--abstract <text>]</i>	"abstract" of an ISO track.	
<i>[--bibliographic <text>]</i>	"bibliographic" of an ISO track.	
<i>[<disk file1> <disk file 2> ...]</i>	At least one audio file or one disk file needs to be specified!	

5.7. Write Video CD

This function will create a Video CD. A video CD contains MPEG full-motion video sequences.

Command	Function	
--write	Write Video CD	
	Parameters	Description
	<code>[--no_error_log]</code>	Do not log errors at all.
	<code>[--error_log <log filename>]</code>	Store NeroCmd error messages in <log filename>.
	<code>[--nero_log_timestamp]</code>	Adds a timestamp to the NeroAPI error log. Useful for batch operations.
	<code>[--output_image <filename>]</code>	Specify output image filename if image recorder is used to avoid prompting for filename.
	<code>[--no_user_interaction]</code>	Allow the whole process to take place with no user interaction (no questions asked).
	<code>[@parameter_file]</code>	parameter_file contains command line arguments.
	<code>--drivename <name></code>	<name> is either the "full name" of the drive or the drive letter.
	<code>[--real]</code>	Forces the disk to be burned, if not specified the process is only simulated.
	<code>[--tao]</code>	Disk is burned in TAO (Track At Once) mode, if not specified DAO (Disk At Once) is default.
	<code>--videocd</code>	Mandatory parameter for Video CDs
	<code>[--speed <speed>]</code>	<speed> is speed at which the CD will be burned.
	<code>[--speed_in_kbps <speed>]</code>	<speed> is speed at which the CD will be burned in KB/s.
	<code>[--speedtest]</code>	Test speed before burning.
	<code>[--enable_abort]</code>	Notify which operations can and which cannot be aborted.
	<code>[--close_session]</code>	Close session, not the whole disk.
	<code>[--temp_path]</code>	Specify a temporary path for Video CD files.
	<code><video file 1> [<video file 2> ...]</code>	List of video files. At least one file needs to be specified!
	<code>[--iso <volumename>]</code>	Name the ISO-volume.
	<code>[iso-no-joliet]</code>	No long filenames.
	<code>[iso-mode2]</code>	Select ISO mode 2.
	<code>[--relax_joliet]</code>	Relax joliet filename length limitations.
	<code>[--recursive]</code>	Do a recursive file search.
	<code>[--enable_abort]</code>	Notify which operations can and which cannot be aborted.
	<code>[--close_session]</code>	Close session, not the whole disk.
	<code>[--detect_non_empty_cdrw]</code>	Detect if burn process is to take place on a non-empty CDRW and offer to take certain actions.
	<code>[--force_erase_cdrw]</code>	In combination with <code>--detect_non_empty_cdrw</code> this parameter will erase a non-empty CDRW without prompting the user.
	<code>[--underrun_prot]</code>	Protect from underrun condition.
	<code>[--disable_eject]</code>	Disables CD ejection after burn completion.
<code><disk file 1> <disk file 2> ...]</code>	At least one one disk file needs to be specified if ISO has been selected.	

5.8. Write Super Video CD

This function will create a Super Video CD (SVCD). Compared to Video CD the SVCD supports higher resolutions and variable bitrate, MPEG-2 video encoding as well as MPEG-1 or MPEG-2 audio encoding.

You must use a 2x or faster CD-ROM drive to read SVCDs, as opposed to 1x drives for VCD.

Command	Function	
--write	Write Super Video CD	
	Parameters	Description
	<i>[--no_error_log]</i>	Do not log errors at all.
	<i>[--error_log <log filename>]</i>	Store NeroCmd error messages in <log filename>.
	<i>[--nero_log_timestamp]</i>	Adds a timestamp to the NeroAPI error log. Useful for batch operations.
	<i>[--output_image <filename>]</i>	Specify output image filename if image recorder is used to avoid prompting for filename.
	<i>[--no_user_interaction]</i>	Allow the whole process to take place with no user interaction (no questions asked).
	<i>[@parameter_file]</i>	parameter_file contains command line arguments.
	<i>--drivename <name></i>	<name> is either the "full name" of the drive or the drive letter.
	<i>[--real]</i>	Forces the disk to be burned, if not specified the process is only simulated.
	<i>[--tao]</i>	Disk is burned in TAO (Track At Once) mode, if not specified DAO (Disk At Once) is default.
	<i>--svideocd</i>	Mandatory parameter for Super Video CDs
	<i>[--speed <speed>]</i>	<speed> is speed at which the CD will be burned in x150kb/s.
	<i>[--speed_in_kbps <speed>]</i>	<speed> is speed at which the CD will be burned in KB/s.
	<i>[--speedtest]</i>	Test speed before burning.
	<i>[--enable_abort]</i>	Notify which operations can and which cannot be aborted.
	<i>[--close_session]</i>	Close session, not the whole disk.
	<i>[--temp_path]</i>	Specify a temporary path for Video CD files.
	<i><video file 1> [<video file 2> ...]</i>	List of video files. At least one file needs to be specified!
	<i>[--iso <volumename>]</i>	Name the ISO-volume.
	<i>[iso-no-joliet]</i>	No long filenames.
	<i>[iso-mode2]</i>	Select ISO mode 2.
	<i>[--relax_joliet]</i>	Relax joliet filename length limitations.
	<i>[--recursive]</i>	Do a recursive file search.
	<i>[--enable_abort]</i>	Notify which operations can and which cannot be aborted.
	<i>[--close_session]</i>	Close session, not the whole disk.
	<i>[--detect_non_empty_cdrw]</i>	Detect if burn process is to take place on a non-empty CDRW and offer to take certain actions.
<i>[--force_erase_cdrw]</i>	In combination with <i>--detect_non_empty_cdrw</i> this parameter will erase a non-empty CDRW without prompting the user.	

Command	Function	
--write	Write Super Video CD continued...	
	Parameters	Description
	<code>[--underrun_prot]</code>	Protect from underrun condition.
	<code>[--disable_eject]</code>	Disables CD ejection after burn completion.
	<code>[<disk file 1> <disk file 2> ...]</code>	At least one one disk file needs to be specified if ISO has been selected.

5.9. Write Image

This function will burn a CD image, already existing on your harddisk, to a CD-R or CD-RW.

Command	Function	
--write	Write Image	
	Parameters	Description
	<code>[--no_error_log]</code>	Do not log errors at all.
	<code>[--error_log <log filename>]</code>	Store NeroCmd error messages in <log filename>.
	<code>[--nero_log_timestamp]</code>	Adds a timestamp to the NeroAPI error log. Useful for batch operations.
	<code>[--output_image <filename>]</code>	Specify output image filename if image recorder is used to avoid prompting for filename.
	<code>[--no_user_interaction]</code>	Allow the whole process to take place with no user interaction (no questions asked).
	<code>[@parameter_file]</code>	parameter_file contains command line arguments.
	<code>--drivename <name></code>	<name> is either the "full name" of the drive or the drive letter.
	<code>[--real]</code>	Forces the disk to be burned, if not specified the process is only simulated.
	<code>[--tao]</code>	Disk is burned in TAO (Track At Once) mode, if not specified DAO (Disk At Once) is default.
	<code>--image <image filename></code>	
	<code>[--speed <speed>]</code>	<speed> is speed at which the CD will be burned in x150kb/s.
	<code>[--speed_in_kbps <speed>]</code>	<speed> is speed at which the CD will be burned in KB/s.
	<code>[--speedtest]</code>	Test speed before burning.
	<code>[--enable_abort]</code>	Notify which operations can and which cannot be aborted.
	<code>[--close_session]</code>	Close session, not the whole disk.
	<code>[--detect_non_empty_cdrw]</code>	Detect if burn process is to take place on a non-empty CDRW and offer to take certain actions.
	<code>[--force_erase_cdrw]</code>	In combination with <code>--detect_non_empty_cdrw</code> this parameter will erase a non-empty CDRW without prompting the user.
	<code>[--underrun_prot]</code>	Protect from underrun condition.
<code>[--disable_eject]</code>	Disables CD ejection after burn completion.	

5.10. Write Freestyle CD

This function will allow you to write any type of CD Layout, e.g. containing a raw data track at the beginning of the disc instead of a self-made ISO/UDF filesystem.

This is good for writing .iso images as can be downloaded everywhere on the net.

Command	Function	
--write	Write Freestyle CD	
	Parameters	Description
	<code>[--no_error_log]</code>	Do not log errors at all.
	<code>[--error_log <log filename>]</code>	Store NeroCmd error messages in <log filename>.
	<code>[--nero_log_timestamp]</code>	Adds a timestamp to the NeroAPI error log. Useful for batch operations.
	<code>[--output_image <filename>]</code>	Specify output image filename if image recorder is used to avoid prompting for filename.
	<code>[--no_user_interaction]</code>	Allow the whole process to take place with no user interaction (no questions asked).
	<code>[@parameter_file]</code>	parameter_file contains command line arguments.
	<code>--drivename <name></code>	<name> is either the "full name" of the drive or the drive letter.
	<code>[--media_type <type>]</code>	Specify a media type. To combine several media types use "+". Allowed types are media_cd media_ddcd media_dvd_m media_dvd_p media_dvd_any media_dvd_ram media_ml media_mrw media_no_cdr media_no_cdrw media_cdrw media_cdr media_dvd_rom media_cdrom media_no_dvd_m_rw media_no_dvd_m_r media_no_dvd_p_rw media_no_dvd_p_r media_dvd_m_r media_dvd_m_rw media_dvd_p_r media_dvd_p_rw media_fpacket media_vpacket media_packetw
<code>[--real]</code>	Forces the disk to be burned, if not specified the process is only simulated.	
<code>[--tao]</code>	Disk is burned in TAO (Track At Once) mode, if not specified DAO (Disk At Once) is default.	

Command	Function	
--write	Write Freestyle CD continued...	
	Parameters	Description
	<code>[--artist <artist>]</code>	Supply artist's name for Audio CD.
	<code>[--title <title>]</code>	Supply Audio CD title.
	<code>[--speed <speed>]</code>	<speed> is speed at which the CD will be burned in x150kb/s.
	<code>[--speed_in_kbps <speed>]</code>	<speed> is speed at which the CD will be burned in KB/s.
	<code>[--cdextra]</code>	Select Mixed Mode.
	<code>[--import] [XY]</code>	Import session number XY. A session number can but does not have to follow the <code>--import</code> switch. If specified, it will be used as a session number to import (zero meaning first session). If nothing is specified, the last session will be imported.
	<code>[--iso <volumename>]</code>	Name the ISO-volume.
	<code>[--freestyle_mode1 <filename>]</code>	Select freestyle mode 1.
	<code>[--freestyle_mode2 <filename>]</code>	Select freestyle mode 2.
	<code>[--freestyle_audio <filename>]</code>	Select
	<code>[iso-no-joliet]</code>	No long filenames.
	<code>[iso-mode2]</code>	Select ISO mode 2.
	<code>[--recursive]</code>	Do a recursive file search.
	<code>[--use_allspace]</code>	Use all space on the media.
	<code>[--speedtest]</code>	Test speed before burning.
	<code>[--enable_abort]</code>	Notify which operations can and which cannot be aborted.
	<code>[--close_session]</code>	Close session, not the whole disk.
	<code>[--detect_non_empty_cdrw]</code>	Detect if burn process is to take place on a non-empty CDRW and offer to take certain actions.
	<code>[--force_erase_cdrw]</code>	In combination with <code>--detect_non_empty_cdrw</code> this parameter will erase a non-empty CDRW without prompting the user.
	<code>[--cd_text]</code>	Write CD Text (if supported by device).
	<code>[--underrun_prot]</code>	Protect from underrun condition.
	<code>[--import_udf]</code>	Import UDF format.
	<code>[--import_iso_only]</code>	Import ISO only.
	<code>[--prefer_rockridge]</code>	Prefer Rockridge format.
	<code>[--use_rockridge]</code>	Use Rockridge format.
<code>[--create_iso_fs]</code>	Create ISO file system.	
<code>[--create_udf_fs]</code>	Create UDF file system.	
<code>[--disable_eject]</code>	Disables CD ejection after burn completion.	
<code>[--verify]</code>	Verify ISO filesystem after writing.	
<code>[<disk file 1> <disk file 2> ...]</code>	Any number of freestyle tracks can be specified up to 99 tracks.	

5.11. Read Audio Tracks

CD-ROM drives that have DAE (Digital Audio Extraction) capabilities can be used to create copies of the raw Audio data stored on Audio CDs. This command relies on that capability.

Command	Function	
--read	Read Audio track(s)	
	Parameters	Description
	<i>[--no_error_log]</i>	Do not log errors at all.
	<i>[--error_log <log filename>]</i>	Store NeroCmd error messages in <log filename>.
	<i>[--nero_log_timestamp]</i>	Adds a timestamp to the NeroAPI error log. Useful for batch operations.
	<i>[--no_user_interaction]</i>	Allow the whole process to take place with no user interaction (no questions asked).
	<i>[@parameter_file]</i>	parameter_file contains command line arguments.
	<i>--drivename <name></i>	<name> is either the "full name" of the drive or the drive letter.
	<i>[--read_speed <speed>]</i>	<speed> is speed at which the audio tracks will be read in x150kb/s.
	<i>--XY <filename></i>	Read contents of track with number 'XY' into file 'filename'. The file name has to include the suffix. Only ".pcm" and ".wav" will be accepted.
<i>[--XY <filename>]</i>	Read additional tracks.	

5.12. Erase CDRW/DVDRW Media

With this command CDRWs are erased, either by doing a quick erase or by sweeping the whole CDRW to ensure that the data is unretrievably removed.

Command	Function	
--erase	Erase CDRW	
	Parameters	Description
	<code>[--no_error_log]</code>	Do not log errors at all.
	<code>[--error_log <log filename>]</code>	Store NeroCmd error messages in <log filename>.
	<code>[--nero_log_timestamp]</code>	Adds a timestamp to the NeroAPI error log. Useful for batch operations.
	<code>[--no_user_interaction]</code>	Allow the whole process to take place with no user interaction (no questions asked).
	<code>[@parameter_file]</code>	parameter_file contains command line arguments.
	<code>[--entire]</code>	By default a quick erase is done, where the actual content of the CDRW/DVDRW is not erased. The “—entire” option sweeps the whole CDRW/DVDRW, insuring that no data can be retrieved by any means afterwards.
	<code>[--disable_eject_after_erase]</code>	Do not eject disc after erase process is done.
	<code>[--force_eject_after_erase]</code>	Force ejecting disc after erase process is done.
<code>--drivename <name></code>	<name> is either the "full name" of the drive or the drive letter.	

5.13. Eject CD

This command will eject a CD that is loaded in a CD-ROM drive.

Command	Function	
--eject	Eject CD	
	Parameters	Description
	<code>[--no_error_log]</code>	Do not log errors at all.
	<code>[--error_log <log filename>]</code>	Store NeroCmd error messages in <log filename>.
	<code>[--nero_log_timestamp]</code>	Adds a timestamp to the NeroAPI error log. Useful for batch operations.
	<code>[--no_user_interaction]</code>	Allow the whole process to take place with no user interaction (no questions asked).
	<code>[@parameter_file]</code>	parameter_file contains command line arguments.
	<code>--drivename <name></code>	<name> is either the "full name" of the drive or the drive letter.

5.14. Load CD

This command will load a CD into a CD-ROM drive.

Command	Function	
--load	Loads a CD into the drive	
	Parameters	Description
	<code>[--no_error_log]</code>	Do not log errors at all.
	<code>[--error_log <log filename>]</code>	Store NeroCmd error messages in <log filename>.
	<code>[--nero_log_timestamp]</code>	Adds a timestamp to the NeroAPI error log. Useful for batch operations.
	<code>[--no_user_interaction]</code>	Allow the whole process to take place with no user interaction (no questions asked).
	<code>[@parameter_file]</code>	parameter_file contains command line arguments.
<code>--drivename <name></code>	<name> is either the "full name" of the drive or the drive letter.	

5.15. Retrieve Image File Disc Information

This command will obtain disc information from an image file.

Command	Function	
--imageinfo	Eject CD	
	Parameters	Description
	<filename>	Name of the image file.
	<code>[--no_error_log]</code>	Do not log errors at all.
	<code>[--error_log <log filename>]</code>	Store NeroCmd error messages in <log filename>.
	<code>[--nero_log_timestamp]</code>	Adds a timestamp to the NeroAPI error log. Useful for batch operations.
	<code>[--no_user_interaction]</code>	Allow the whole process to take place with no user interaction (no questions asked).
<code>[@parameter_file]</code>	parameter_file contains command line arguments.	

5.16. Retrieve Version Information

This command retrieves version information on the currently used *NeroAPI*.

Command	Function	
--version	Retrieve version information	
	Parameters	Description
	<code>[--no_error_log]</code>	Do not log errors at all.
	<code>[--error_log <log filename>]</code>	Store NeroCmd error messages in <log filename>.
	<code>[--nero_log_timestamp]</code>	Adds a timestamp to the NeroAPI error log. Useful for batch operations.
	<code>[--no_user_interaction]</code>	Allow the whole process to take place with no user interaction (no questions asked).
<code>[@parameter_file]</code>	parameter_file contains command line arguments.	

6. Exit Code

When *NeroCmd* application terminates it supplies an exit code which indicates whether the requested operation was executed successfully or an error has occurred. The following table lists the exit codes that *NeroCmd* will provide.

Exit Code	Meaning
0	Ok.
1	Bad usage!
2	Internal error!
3	NEROAPI.DLL was not found!
4	Serial number was not found!
5	Serial number is invalid!
6	No CD was inserted!
7	CDRW is not supported!
8	There was an error erasing CDRW!
9	There was an error obtaining a list of available drives!
10	Drive name is missing!
11	There was an error while trying to access the drive!
12	Drive was not found!
13	Unknown CD format!
14	Invalid drive!
15	Burn process failed!
16	Function was not allowed!
17	Drive was not allowed!
18	There was an error obtaining CD info!
19	Track was not found!
20	File type is unknown!
21	Digital audio extraction failed!
22	There was an error opening the file!
23	Out of memory!
24	Error determining the length of input file!
25	Eject/Load failed!
26	Invalid session number to import!
27	Failed to create ISO track!
28	Specified file was not found!
29	Unknown error.
30	User aborted!
31	Demo version has expired!
32	Bad message file

7. Software Version History

Version	Date	Comments
1.0	November 24, 2000	Initial version.
1.1	December 6, 2000	Updates according to the changes in NeroAPI (version 5.0.3.4). <ul style="list-style-type: none"> - UserDialog callback function has been modified to support new DLG_NON_EMPTY_CDRW callback. - Two new command line parameters have been added. One is --detect_non_empty_cdrw and the other is --cd_text. - The code around NeroImportIsoTrack has been updated according to the NeroAPI changes. Error handling has been improved.
1.2	April 5, 2001	Updates according to the changes in NeroAPI (version 5.5.0.6). <ul style="list-style-type: none"> - Changed project name from NeroBATCH to NeroCmd
1.3	April 23, 2001	Updates according to the changes in NeroAPI (version 5.5.1.4). <ul style="list-style-type: none"> - Added two cmd line options according to the two new NBF_constants - Added a new EXITCODE_ and a corresponding error message for a new NEROAPI_INIT_DEMOVERSION_EXPIRED constant - Changed NeroAPI initialization to utilize the new shared API feature
1.4	October 28, 2001	Added handling of the --dvd parameter. The DVD burning feature was introduced with NeroAPI 5.5.4.4.
1.5	December 3, 2001	Several Bugfixes: <ul style="list-style-type: none"> - UserDialog-Input wasn't evaluated properly. - Buffer was overwritten occasionally, causing the application to terminate with an error. Improved Log File Handling Added --force_erase_cdrw command line parameter to delete CDRW without user interaction when combined with --detect_non_empty_cdrw Added --nero_log_timestamp to keep multiple versions of the NeroAPI error log for batch runs.
1.6	November 22, 2002	Improved file and directory handling. Added --driveinfo for information about a particular drive --listformats for listing available audio formats --get_speeds for read and write speeds --recursive for handling of subdirectories

Version	Date	Comments
1.7.0.0	July 23, 2003	Added --no_user_interaction to run without user input --output_image to specify an image file name --japanese_cd_text to support Japanese CD Text --booktype_dvdrom to change a DVD's booktype to DVD-ROM --use_allspace to use all space on a media --relax_joliet to relax joliet filename length limitations --disable_eject_after_erase to not eject a RW media after erasing --force_eject_after_erase to eject a RW media after erasing --imageinfo to provide Disc Information from an image file --system_identifier to provide "system identifier" information --volume_set to provide a volume set name --publisher to provide "publisher" information --data_preparer to provide "data preparer" information --application to provide "application" information --copyright to provide "copyright" information --abstract to provide "abstract" information --bibliographic to provide "bibliographic" information