



Safety and Instruction Manual for cordless garden multi-tool HT04

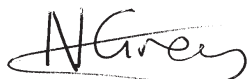
www.gtechonline.co.uk

Introduction

It is my pleasure to introduce the HT04 cordless garden multi-tool from Gtech.

Designed, patented and developed in the heart of England we hope that you find this product helps you effortlessly stay on top of garden chores. If you have any queries or comments about your new garden tool, we would love to hear from you.

Our friendly customer service team are available from 9am-5.30pm Monday-Thursday, and 9am-3.30pm on Fridays on 01905 345891 or, alternatively, please visit our website www.gtechonline.co.uk. Thank you for your purchase from Gtech, we hope you have many happy hours using your HT04.



Nick Grey,
Chairman, Grey Technology

Contents

pg

- 3 Safety Information
- 6 Technical Specification
- 7 Part Location
- 8 Assembly
- 8 Battery Charging and Recharging
- 10 Fitting and Removing the Attachments
- 12 Cutting Head Adjustment
- 12 Telescopic Tube Adjustment
- 13 Starting and Stopping
- 14 Using Your Trimmer
- 17 Cleaning and Storage
- 17 Care and Maintenance
- 18 Troubleshooting
- 18 Environment and Product Recycling
- 19 Warranty Information
- 20 Declaration of Conformity

Important Safeguards



IMPORTANT: FOR YOUR OWN SAFETY AND BYSTANDERS READ THE INSTRUCTIONS BEFORE OPERATING THE MACHINE.

PLEASE KEEP THE INSTRUCTIONS SAFE FOR FUTURE REFERENCE.

General Power Tool Safety Warnings

WARNING Read all safety warnings and all instructions. Failure to follow the warnings and instructions may result in electric shock, fire and/or serious injury.

Save all warnings and instructions for future reference.

The term "power tool" in the warnings refers to your mains-operated (corded) power tool or battery-operated (cordless) power tool.

Work area safety:

- Keep the work area clean and well lit. Cluttered or dark areas invite accidents.
- Do not operate power tools in explosive atmospheres, such as in the presence of flammable liquids, gases or dust. Power tools create sparks which may ignite the dust or fumes.
- Keep children and bystanders away while operating a power tool. Distractions can cause you to lose control.

Electrical safety:

- Power tool plugs must match the outlet. Never modify the plug in any way. Do not use any adapter plugs with earthed (grounded) power tools. Unmodified plugs and matching outlets will reduce the risk of electric shock.
- Avoid body contact with earthed or grounded surfaces such as pipes, radiators, ranges and refrigerators. There is an increased risk of electric shock if your body is earthed or grounded.
- Do not expose power tools to rain or wet conditions. Water entering a power tool will increase the risk of electric shock.

- Do not abuse the cord. Never use the cord for carrying, pulling or unplugging the power tool. Keep cord away from heat, oil, sharp edges or moving parts. Damaged or entangled cords increase the risk of electric shock.
- When operating a power tool outdoors, use an extension cord suitable for outdoor use. Use of a cord suitable for outdoor use reduces the risk of electric shock.
- If operating a power tool in a damp location is unavoidable, use a residual current device (RCD) protected supply. Use of an RCD reduces the risk of electric shock. NOTE The term "residual current device (RCD)" may be replaced by the term "ground fault circuit interrupter (GFCI)" or "earth leakage circuit breaker (ELCB)".

Personal Safety:

- Stay alert, watch what you are doing and use common sense when operating a power tool. Do not use a power tool while you are tired or under the influence of drugs, alcohol or medication. A moment of inattention while operating power tools may result in serious personal injury.
- Use personal protective equipment. Always wear eye protection. Protective equipment such as dust mask, non-skid safety shoes, hard hat, or hearing protection used for appropriate conditions will reduce personal injuries.

Important Safeguards

- Prevent unintentional starting. Ensure the switch is in the off-position before connecting to power source and/or battery pack, picking up or carrying the tool. Carrying power tools with your finger on the switch or energising power tools that have the switch on invites accidents.
- Remove any adjusting key or wrench before starting the power tool. A wrench or a key left in a rotating part of the tool may result in a personal injury.

- Do not overreach. Keep proper footing and balance at all times. This enables better control of the power tool in unexpected situations.
- Dress properly. Do not wear loose clothing or jewellery. Keep your hair, clothing and gloves away from moving parts. Loose clothes, jewellery or long hair can be caught in moving parts.
- If devices are provided for the connection of dust extraction and collection facilities, ensure these are connected and properly used. Use of dust collection can reduce dust-related hazards.

Power tool use and care:

- Do not force the power tool. Use the correct power tool for your application. The correct power tool will do the job better and safer at the rate for which it was designed.
- Do not use the power tool if the switch does not turn it on and off. Any power tool that cannot be controlled with the switch is dangerous and must be repaired.
- Disconnect the plug from the power source and/or the battery pack from the power tool before making any adjustments, changing accessories, or storing power tools. Such preventive safety measure reduce the risk of starting the power tool accidentally.
- Store idle power tools out of the reach of children and do not allow persons unfamiliar with the power tool or these instructions to operate the power tool. Power tools are dangerous in the hands of untrained users.
- Maintain power tools. Check for misalignment or binding of moving parts, breakage of parts and any other condition that may effect the power tools operation. If damaged, have the power tool repaired before use. Many accidents are caused by poorly maintained power tools.
- Keep cutting tools sharp and clean. Properly maintained cutting tools with sharp cutting edges are less likely to bind and are easier to control.
- Use the power tool, accessories and tool bits etc. in accordance with these

instructions, taking into account the working conditions and the work to be performed. Use of the power tool for operations different from those intended could result in a hazardous situation.

Battery use and care:

- Recharge only with the charger specified by the manufacturer. A charger that is suitable for one type of battery pack may create a risk of fire when used with another battery pack.
- Use power tools only with specifically designated battery packs. Use of any other battery packs may create a risk of injury & fire.
- When the battery pack is not in use, keep it away from other metal objects, like paper clips, coins, keys, nails, screws, or other small metal objects, that can make a connection from one terminal to another. Shorting the battery terminals together may cause burns or fire.
- Under abusive conditions, liquid may be ejected from the battery; avoid contact. If contact accidentally occurs, flush with water. If liquid contacts eyes, additionally seek medical help. Liquid ejected from the battery may cause irritation or burns.

Service:

- Have your power tool serviced by a qualified repair person using only identical replacement parts. This will ensure that the safety of the power tool is maintained.

Hedge trimmer safety warnings:

- Keep all parts of the body away from the cutting blade. Do not remove cut material or hold material to be cut when the blades are moving. Make sure the switch is off when clearing jammed material. A moment of inattention while operating the hedge trimmer may result in serious personal injury.
- Carry the hedge trimmer by the handle with the cutting blade stopped. When transporting or storing the hedge trimmer always fit the cutting blade cover. Proper handling of the hedge trimmer will reduce possible personal injury from the cutting blades.

- Keep any cables away from the cutting area. During operation the cable may be hidden in shrubs and can be accidentally be cut by the blade.

Intended use:

- This product is intended for DOMESTIC USE ONLY

Additional safety warnings:

- Not to be used as a toy; not to be used near children, never allow children to use the machine. Store the power tool in a secure dry place out of reach of children and animals.
- Always be sure of your footing on ladders or slopes, do not overreach or use on excessively steep slopes. Take care in slippery conditions and uneven ground.
- Before use check the power supply and charger cord for signs of damage or ageing. To avoid damage it is not recommended to wrap the cord around the charger for storage. A damaged or entangled charger cord can increase the risk of fire and electric shock.
- Do not abuse the charger cord as this can increase the risk of fire or electric shock. Never carry the charger or battery by the cord. Do not pull the cord to disconnect the charger from an electrical outlet.
- Do not handle the charger or the tool with wet hands.
- Always be aware of your surroundings and stay alert for possible hazards that you may not be aware of due to concentration on the trimmer.
- Do not operate when barefoot or wearing open sandals.
- Always wear substantial footwear and long trousers.
- Do not run with the power tool.
- When operating the hedge trimmer ensure that both hands are correctly positioned on both handles. Do not operate this product if incomplete or with unauthorized modifications.
- Keep hands and feet away from the cutting means at all times, and especially when switching on the motor. Warning: the cutting element will continue to move after the motor is switched off.
- Ensure that the motor is fully stopped and the battery/mains supply is disconnected before: cleaning, clearing a blockage; checking, or maintenance is carried out on the machine.
- Never operate the machine with damaged guards or without the guards in place.
- The operator or user is responsible for accidents or hazards occurring to other people at their property.
- This appliance is not intended for use by persons (including children) with reduced physical, sensory or mental capabilities, or lack of experience and knowledge, unless they have been given supervision or instruction concerning use of the appliance by a person responsible for their safety.
- Only use the machine in daylight or good artificial light.
- Before using the machine and after any impact, check for signs of wear or damage and repair as necessary.
- Check the hedge for any objects such as wire fences that could damage or jam the trimmer blade.
- Always ensure that ventilation openings are kept clear of debris.
- Keep the product and all accessories away from hot surfaces.
- Never modify the power tool in any way as this may increase the risk of personal injury.
- Do not attempt to repair any damaged parts on this product unless you are qualified to do so.
- Never use replacement parts or accessories not provided or recommended by the manufacturer.
- Your battery pack contains Ni-Cd batteries; do not incinerate batteries or expose to high temperatures, as they may explode.
- In an emergency situation contact professional help directly!

Warning label descriptions



General hazard safety alert.



Sound pressure 89dB(A)
Sound power 89dB(A)
Note: Measured noise values determined according to 2000/14 EC (1.60m height, 1.0m distance away)



Read instruction manual.



Do not use in rain or leave outdoors whilst it is raining.



Wear goggles when using this product.



Hazard high speed projectiles.



Blades continue to move after switched off. Keep hands away from the blades until they have come to a complete stop.



Hazard high speed projectiles, keep all bystanders away from cutting area when in use.

Technical Specification

HT04 18V cordless hedge trimmer

Unit operating cycle with full battery: up to 50 minutes* **Dependant on length & thickness of hedge.*

Blade length: 315mm

Blade teeth spacing: 15mm

Blade speed: 1100/min

Battery operating voltage: 18.0V DC 1.5Ah

Rated input power: 160W

Standard Charger type: AD-2315-BS8P

Charging period for fully discharged battery: 15 hours

Charger input: 230V AC 50Hz

Charger output: 22.5V DC 150mA

Optional Fast Charger type*: CHA006009B **Only included with some models*

Charging period for fully discharged battery: 4 hours

Charger input: 100-240V AC 50/60Hz

Charger output: 8-23V DC 450mA

Sound power level (according to EN60745): 89dB(A)

Weight: 2.5Kg (with 315mm blade fitted)

Vibration level: below 2,5m/s²

**WARNING: ONLY USE THE CHARGER PROVIDED WITH THE PRODUCT.
USING ANY OTHER CHARGER MAY DAMAGE THE PRODUCT AND THE BATTERY.**

Unpacking: Part Location

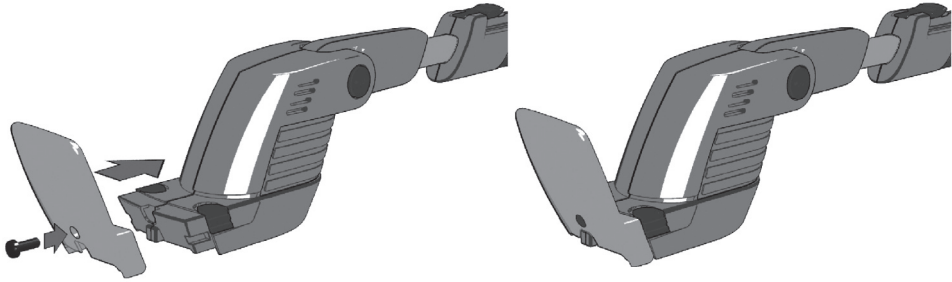


- | | | | |
|----|------------------------|------|----------------------------------|
| 1 | Main unit | 11 | Cutting Blade Guard |
| 2 | Interlock switch | 12 | Cutting Blade |
| 3 | Rear on/off switch | 13 | Battery Pack |
| 4 | Middle on/off switch | 14 | Charging Stand |
| 5 | Front on/off switch | 15 | Battery Charging socket |
| 6 | Telescopic tube latch | 16 | Charging adaptor |
| 7 | Head angle lock button | 17 | Charging connector |
| 8 | Blade release buttons | 18 * | <i>Branch cutter attachment*</i> |
| 9 | Visor Screw | 19 * | <i>Grass shears attachment*</i> |
| 10 | Visor | 20 * | <i>Weed basher attachment*</i> |

**Only included with some models. All attachment tools are available to purchase separately from www.gtechonline.co.uk or 01905 345891.*

Assembly

Fit the visor to the tool using the screw supplied. Do not over tighten the screw.



Battery Charging and Recharging

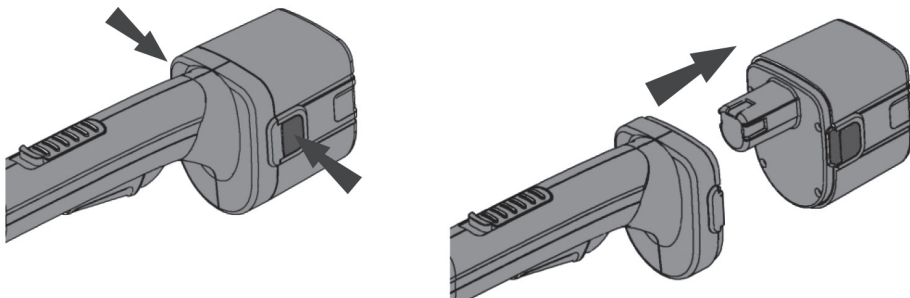
WARNING: if the battery is damaged in any way do not attempt to charge it and replace it immediately.

Before use check the power supply and charger cables for signs of damage or ageing. A damaged charger cable can increase risk of fire or electric shock.

Fully charge the battery before first use.

The battery has to be removed from the product to charge it.

To remove the battery press the 2 release buttons on either side of the battery at the same time and pull the battery from the tool.



Connect the charging jack into the socket on the charging stand. Plug the charging adaptor into a suitable electrical socket and switch on.

Push the battery pack into the charging stand. Press down firmly to ensure the battery pack is fully located in the charging stand.

Using the Standard Charger:

From flat the battery requires 15 hours to fully charge.

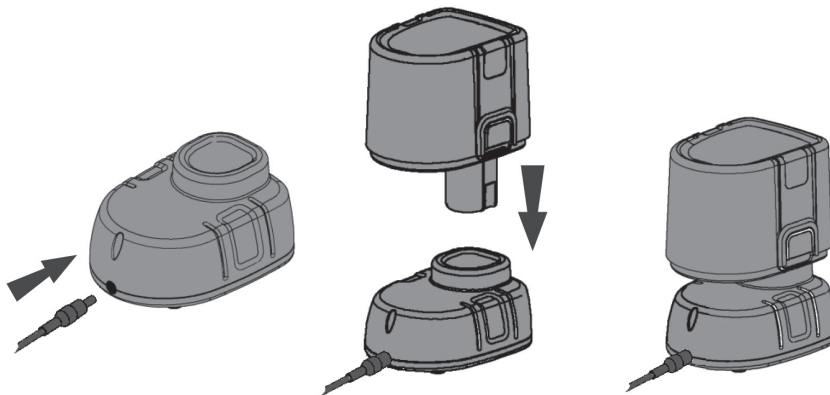
NOTE: There is no indicator on the charger or battery to show when the battery is charging or fully charged. Charge the battery for 15 hours after use to ensure full charge.

The battery will not be damaged if charged more than 15 hours but should not be charged for more than 24 hours.

Using the Fast Charger:

From flat the battery requires 4 hours to fully charge.

The red light on the charger will illuminate to show the battery is charging. The light will turn green when the battery is fully charged.



WARNING: ONLY USE THE CHARGER AS SUPPLIED WITH THE PRODUCT.
USING ANY OTHER CHARGER MAY DAMAGE THE PRODUCT AND THE BATTERY.

Once the battery is fully charged switch off the electrical socket, remove the charging jack from the battery pack, and unplug the charging adaptor from the mains socket.

WARNING: Do not pull the charging adaptor by the cord.

WARNING: Ensure the start switches are **not** in the ON position before reconnecting the battery to the product.

Only use replacement batteries as supplied by the manufacturer.

Spare and replacement batteries can be purchased from Gtech:

Tel: 01905 345891 email: support@greytechnology.co.uk

Fitting and Removing the Attachments

WARNING: THIS MACHINE CAN CAUSE SERIOUS INJURIES.

THE SAFETY WARNINGS AT THE FRONT OF THIS MANUAL SHOULD BE OBSERVED FOR ALL ATTACHMENTS.

Read all instructions carefully for the correct handling preparation, maintenance and starting and stopping of the machine. Be familiar with all controls and the proper use of the machine. Do NOT operate this machine if you are tired or under the influence of drugs, alcohol or medication.

Depending on the configuration of your product, it may come supplied with different accessories which can be fitted on the tool.

WARNING: wear protective gloves when handling attachments particularly those with blades. For additional safety remove the battery before changing accessories.

WARNING: immediately after use the attachment may become very hot, wear protective gloves before handling.

WARNING: switch off the motor before fitting or removing the blade.

Do not attempt to remove attachments while the motor is running and parts are moving.

All tool attachments are removed and fitted in the same way:

Fitting the attachments:

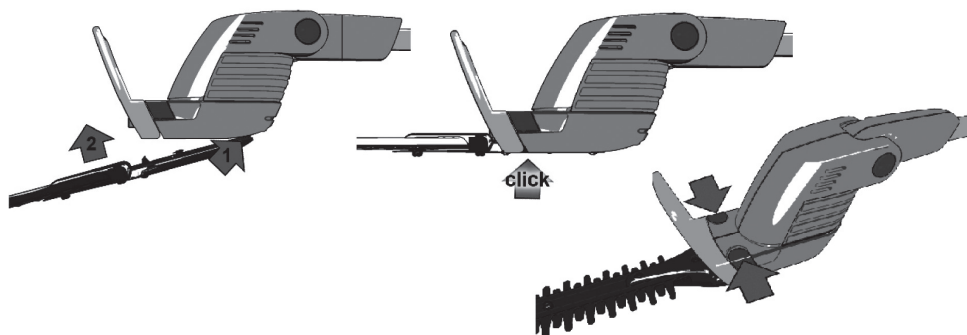
Hook the attachment into the bottom rear of the head of the tool and push in a upwards direction. You will hear the blade 'Click' into place.

Ensure the attachment is securely fitted in position before starting the trimmer.

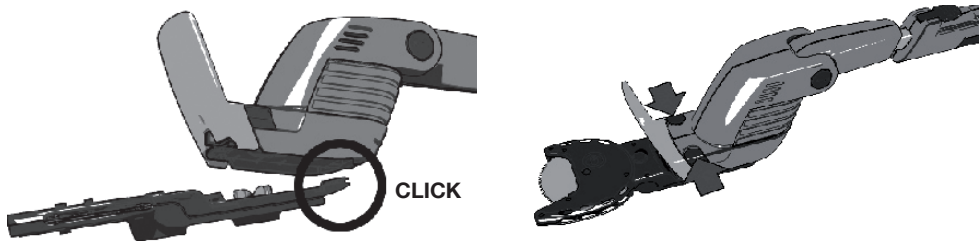
To remove the attachments:

Press both attachment release buttons at the same time. Be careful not to drop the attachment when doing this.

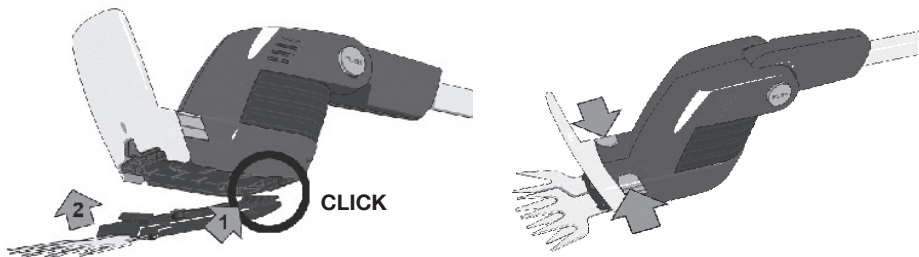
Fitting and removing the hedge trimmer blade:



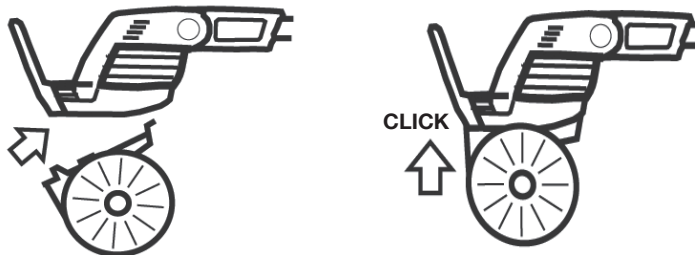
Fitting and removing the branch cutter*:



Fitting and removing the grass shears*:



Fitting the weed basher*:



**Only included with some models. All attachment tools are available to purchase separately from www.gtechonline.co.uk or 01905 345891.*

Cutting Head Adjustment

The cutting head of the trimmer can be adjusted to different angles, allowing you to comfortably cut in different positions and conditions.

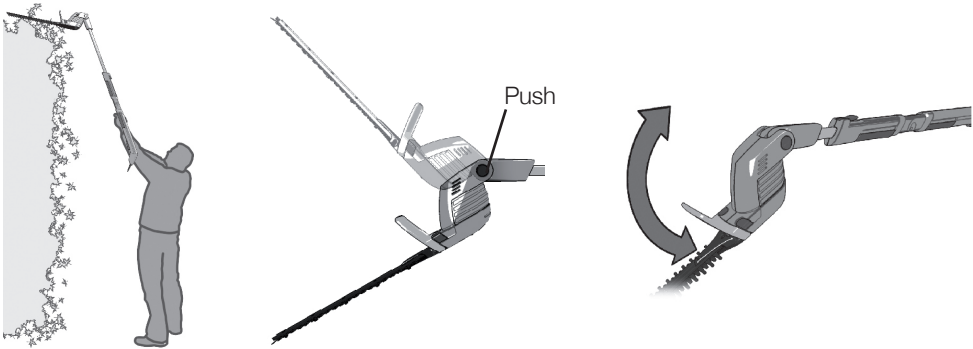
WARNING: switch off the motor before adjusting the head. Do not attempt to adjust the head while the blades are moving.

Grip the head of the trimmer and press and hold the button on the side marked 'PUSH'

Rotate the head to the desired angle.

Release the button to lock the head in your selected position.

Ensure the button and head are securely locked in position before starting the trimmer.



Telescopic Tube Adjustment

The telescopic tube length on the trimmer can be adjusted, allowing you to reach difficult places without the use of a ladder.

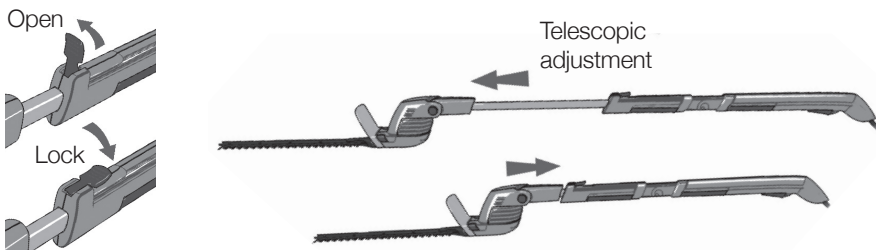
WARNING: switch off the motor before adjusting the head. Do not attempt to adjust the telescopic tube while the blades are moving.

Grip the head of the product firmly and lift the latch on the lower handle.

Extend the telescopic tube to the required length.

Press the latch firmly down to lock the handle.

Ensure the latch is securely locked in position before starting the trimmer.



Starting and Stopping

The handle of this product is designed for 2 handed operation as a safety measure to prevent accidental starting.

WARNING: make sure all moving parts ie blades are at a safe distance from all body parts and bystanders.

Fully charge the battery as described in the section Battery Charging and Recharging. Push the battery connector onto the battery pack until it securely locates into place.

To start the trimmer:

Push the interlock switch forward and hold in position.

Press and hold the rear on/off switch.

Press and hold either the middle on/off switch OR the front on/off switch.

Either the front or middle on/off switch may be used, whichever is the most comfortable or convenient.

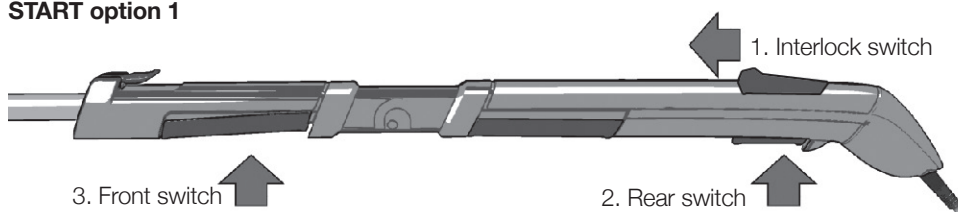
Once the trimmer is started the interlock switch can be released.

To stop the trimmer:

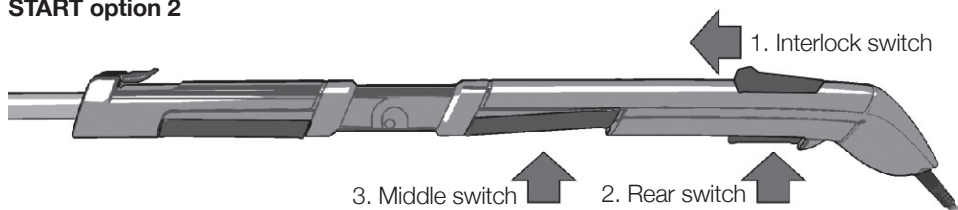
Release the switches to stop the tool.

WARNING: the blades will continue to move for a fraction of a second after releasing the trigger. When releasing the start/stop trigger wait for the blades to stop completely before removing hands from handle.

START option 1



START option 2



Using your Hedge Trimmer

THE SAFETY WARNINGS AT THE FRONT OF THIS MANUAL SHOULD BE OBSERVED FOR ALL ATTACHMENTS.

Hold the trimmer with both hands. Stand in a secure and stable position.

Before cutting, check the hedge for any objects such as wire fences that could damage or jam the trimmer blade and drive mechanism.

WARNING: do not overload the hedge trimmer.

Attempting to force the trimmer to cut may damage the motor. To prevent overloading check to see if the hedge is very thick or dense. Cut thick or dense foliage in stages with several lights cuts as this will help reduce the load on the motor.

When cutting move steadily along the line of cut, so that the stems are fed directly into the cutter blades. The double edge cutting blade enables cutting in either a side to side action or an up and down motion.

To reach a level finish, fasten a piece of string along the length of the hedge cut the hedge just above the string to give an even height. The maximum thickness of a branch that the trimmer will cut is 15.0mm. This may be reduced with certain bush and shrub types.

Using your Grass Shears*

THE SAFETY WARNINGS AT THE FRONT OF THIS MANUAL SHOULD BE OBSERVED FOR ALL ATTACHMENTS.

Hold the trimmer with both hands.

Stand in a secure and stable position.

Always take care to avoid cutting into objects such as wire, which could cause damage to the cutting blade and drive.

Use the grass shears tool as shown in the image on the right.

Extend the telescopic handle to the required length.

Rotate the head so the cutting blades are level with the lawn.

WARNING: do not overload the Grass Shears.

Attempting to force the Grass Shears to cut may damage the motor.

Cut thick grass in stages with several lights cuts as this will help reduce the load on the motor.

WARNING: the blades will continue to move for a fraction of a second after releasing the trigger. When releasing the start/stop trigger wait for the blades to stop completely before removing hands from handle. Keep hands and feet away from the cutting blades at all times, and especially when switching on the motor.

WARNING: When transporting or storing the trimmer always fit the protective blade guard. When not in use remove the Grass Shears attachment from the trimmer.



Using your Branch Cutter*

THE SAFETY WARNINGS AT THE FRONT OF THIS MANUAL SHOULD BE OBSERVED FOR ALL ATTACHMENTS.

Hold the trimmer with both hands. Stand in a secure and stable position.

WARNING: do not overload the Branch Cutter.

Attempting to force the branch cutter to cut may damage the motor. Cut thick branches in stages with several light cuts as this will help reduce the load on the motor.

If the blade gets jammed into a branch pull it out by pulling it straight back. Do not twist and lever it out, this could bend or break the blade!

WARNING: DO NOT CUT DIRECTLY OVERHEAD DANGER OF FALLING OBJECTS!

WARNING: ALWAYS WEAR EYE PROTECTION WHEN USING THE BRANCH CUTTER

WARNING: When transporting or storing the trimmer always fit the protective blade guard. When not in use remove the branch cutter attachment from the trimmer.

Always take care to avoid cutting into objects such as wire, which could cause damage to the cutting blade and drive.



When cutting branches overhead cut the outer parts of the branch off first. When cutting a branch too close to the tree, the weight of the branch may clamp the blade in the cut. Avoid this, as it could damage the blade and drive.

Feed branches or cutting material into the blade on the left side of the blade close to the “support”.

**Only included with some models. All attachment tools are available to purchase separately from www.gtechonline.co.uk or 01905 345891.*

Using your Weed Basher*

THE SAFETY WARNINGS AT THE FRONT OF THIS MANUAL SHOULD BE OBSERVED FOR ALL ATTACHMENTS.

The Weed basher is supplied with 2 brushes. Choose your brush type carefully before starting as damage may be caused to certain materials. If in doubt always use the nylon abrasive filament brush as this is less abrasive than the steel brush.

Before using the Weed basher test a small area to check suitability. Older stone or reconstituted stone / paving may be damaged with excessive abrasion.

1 Abrasive filament nylon: block paving, soft stone such as sandstone, stone with evidence of shaling, areas where pointing is breaking down, re-constituted concrete paving, patterned concrete paving, tarmac

2 Zinc coated steel: compressed concrete paving (slabs), block paving (test), slate, granite, travertine.

Hold the trimmer with both hands. Stand in a secure and stable position.

When cleaning move steadily and slowly applying light pressure. Do not apply excessive pressure.

Always take care to avoid cleaning close to objects that could become entangled into the brush such as wire, rope etc.

WARNING: ALWAYS WEAR EYE PROTECTION WHEN USING THE WEED BASHER.

Avoid operating while people and animals are nearby as risk of high speed projectiles.

WARNING: the rotary brushes will continue to move after the motor is switched off.

WARNING: When transporting or storing the trimmer always remove the Weed basher. When not in use remove the Weed basher attachment from the trimmer.

Fitting and Replacing Brushes

Wear gloves when handling or cleaning the rotary brushes.

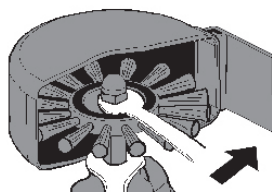
Two spanners will be required to replace the brush.
(10/13mm not included)

Use the 10.0mm spanner to hold the shaft which attaches the brush to the main housing.

Place the 13.0mm spanner onto the nut which is visible on the outer surface of the brush.

Holding the 10.0mm spanner, rotate the nut anti clockwise. This will loosen the nut. Remove the nut and store in a safe place.

The brush can now be removed. Fitting the brush is the reversal of above.



**Only included with some models. All attachment tools are available to purchase separately from www.gtechonline.co.uk or 01905 345891.*

Cleaning and Storage

Remove the battery from the tool during storage. **Take care not to short the battery contact terminals with metal objects.** Store the tool in a secure, dry place out of reach of children and animals. Storage outside in a damp environment such as a garden shed may cause certain items such as the blades to corrode. **Always clean and lubricate the cutting blade before storage.**

Do not use abrasive materials to clean the product or immerse it in water. Clean the exterior of the machine thoroughly using a soft brush and cloth. Do not use water or solvents. Remove all debris especially from the ventilation slots on the motor housing.

Do not place other objects on top of the machine.

When transporting or storing the trimmer always fit the protective blade guard.

When not in use remove any attachments from the trimmer.

Care and Maintenance

CAUTION: ALWAYS DISCONNECT THE BATTERY AFTER USE AND BEFORE CARRYING OUT ANY SERVICING OR MAINTENANCE.

WARNING: wear protective gloves before handling the blade.

To ensure long and reliable service, carry out the following maintenance regularly:

Check for obvious defects such as loose, dislodged or damaged blades, loose fixings and worn or damaged components.

Check that covers and guards are undamaged and correctly fitted.

Blade maintenance:

Wear gloves when handling or cleaning the cutting blade.

Always clean the cutting blade after operation and coat it with a lubricating oil or spray. This will prevent the blade becoming seized or corroded during storage.

During longer cutting periods 15 minutes or greater it is recommended to lubricate the blade, this will improve cutting performance and extend the batteries run time. A lack of lubrication to the blade can severely effect the products run time and may cause the blade to overheat.

Before use visually check the condition of the cutting edges of the cutting blade and check the tightness of the blade bolts.

When not in use ensure that the blade is covered with the blade guard provided and that it has been lubricated. Failure to do so may cause the blade to corrode and will severely reduce cutting performance and battery run times.

**If the product needs to be repaired or replaced only use replacement parts which are approved by the manufacturer. Spare parts can be purchased from Grey Technology Ltd:
tel : 01905 345891 www.gtechonline.co.uk email: support@greytechnology.co.uk**

Troubleshooting


PROBLEM	POSSIBLE REASON	POSSIBLE SOLUTION
Tool fails to operate	<ol style="list-style-type: none"> 1. Battery flat 2. Battery pack not fully pushed into product 3. Faulty switch 	<ol style="list-style-type: none"> 1. Recharge battery 2. Push battery pack into product 3. Switch in handle will 'click' when operated if operating correctly
Battery not charging	<ol style="list-style-type: none"> 1. Charger cord not well connected to charging stand 2. Battery not fully pushed into charging stand 3. Charger faulty 	<ol style="list-style-type: none"> 1. Check charger connector is correctly fitted to charging stand 2. Push battery fully into charging stand. 3. Charger should feel warm to touch when charging battery
Cutting blade excessively hot	<ol style="list-style-type: none"> 1. Lack of lubrication 2. Cutting blade damaged 3. Cutting blade blunt 	<ol style="list-style-type: none"> 1. Clean/lubricate blade 2. Replace blade 3. Replace blade
Blade will not move. Do not hold switch on when blade is jammed	<ol style="list-style-type: none"> 1. Battery flat 2. Blade teeth jammed or damaged 3. Blade corroded 	<ol style="list-style-type: none"> 1. Recharge battery 2. Remove obstructions from the blade (switch tool off!) 3. Replace blade
Cutting time low	<ol style="list-style-type: none"> 1. Blade needs lubrication 2. Blade needs cleaning 3. Overloading motor 4. Battery not fully charged. 5. Battery no longer holding charge 	<ol style="list-style-type: none"> 1. Lubricate blade 2. Clean and lubricate blade 3. Use lighter cutting action and cut in several stages 4. Fully charge battery 5. Replace battery

Should you experience any problems please do not return the product to the shop. For any help, technical assistance, or spare parts please contact the Gtech helpline.

Tel: 01905 345891 email: support@greystechnology.co.uk

Environment & Product Recycling



The  symbol indicates that this product is covered by legislation for waste electrical and electronic products (EN2002/96/EC) When the product has reached the end of its life please do not dispose of it with general household waste. Consider the environment and take it to a recognised recycling facility.

The product contains a NiCd battery which should not be disposed with general household waste. The battery should be removed from the product and be disposed of properly at a recycling facility.

Call your local council, civic amenity site, or recycling centre for information on the disposal and recycling of electrical products. Alternatively visit www.recycle-more.co.uk for advice on recycling and to find your nearest recycling facilities.



Warranty Information

Grey Technology has provided the HT04 cordless garden multi-tool with a **12 month guarantee**.

In Guarantee:

Please retain your receipt as proof of purchase. In the rare and unfortunate event of your Gtech product being faulty, please accept our apologies and we will aim to remedy the problem as fast as possible once brought to our attention. However please be aware that due to Company Policy, Grey Technology can only repair or replace all or part of the product if proof of purchase is provided and the claim is made within 12 months of the purchase date.

If your product is within the 12 months warranty period you should either return this product with its receipt to the retailers where the product was purchased or if a simple part or advice is required ring the Gtech Helpline where we will be more than happy to assist.

Note: Gtech cannot refund any monies if the product was brought from a third party.

Note: The battery is a consumable item and is not covered by this guarantee.

We would like to remind our customers that the Gtech guarantee does not cover any unauthorised repairs and will be annulled:

- 1** if the product has been damaged due to incorrect use or maintenance.
- 2** if any part is modified or replaced or if it is used in any way that is not recommended by Gtech.
- 3** if it is used with any parts not produced or not recommended by Gtech.
- 4** if it is used for purposes other than those specified by Gtech.

If after reading the manual and following the instructions you are sure that the product is defective please call the **Gtech Helpline on 01905 345891**. A Customer Service Advisor will be available to deal with any problems you have with our product. To assist them please be ready with the product, a detailed description of the problem, and your proof of purchase.

Out of Guarantee:

If your Gtech product is over 12 months old and you need any parts or advice then please contact our Helpline. Parts will be sent out usually within 3 weeks of request.

WARNING: Only use the charger supplied with the product.

Using another charger may damage the product and the battery and will invalidate your guarantee.

EC Declaration of Conformity

We, manufacturer/importer

Grey Technology Ltd
Units 1&2 Cupola Court
Worcester
WR5 1RL

declare that the product:
HT04 cordless hedge trimmer
and the attachment tools: Hedge Cutter Blade HTA05/ Branch Cutter HTA02/ Grass Shears
HTA03 / Weed Basher HTA06
comply with the essential health and safety requirements of the following directives:

89/336/EEC - EMC Directive
98/37 EEC - Machinery Directive
73/23 EEC - Low Voltage Directive

Technical documentation holder: Grey Technology Ltd, WR5 1RL

Standards and technical specifications referred to:

EN60335-1
EN ISO 11680-1
N238
EN60335-2-29
EN55014-1
EN55014-2
EN61000-3-2
EN61000-3-3



12/09 



helpline 01905 345891 email support@greytechnology.co.uk web www.gtechonline.co.uk