



---

The following document contains information on Cypress products. Although the document is marked with the name "Spansion" and "Fujitsu", the company that originally developed the specification, Cypress will continue to offer these products to new and existing customers.

**Continuity of Specifications**

There is no change to this document as a result of offering the device as a Cypress product. Any changes that have been made are the result of normal document improvements and are noted in the document history page, where supported. Future revisions will occur when appropriate, and changes will be noted in a document history page.

**Continuity of Ordering Part Numbers**

Cypress continues to support existing part numbers. To order these products, please use only the Ordering Part Numbers listed in this document.

**For More Information**

Please contact your local sales office for additional information about Cypress products and solutions.

**About Cypress**

Cypress (NASDAQ: CY) delivers high-performance, high-quality solutions at the heart of today's most advanced embedded systems, from automotive, industrial and networking platforms to highly interactive consumer and mobile devices. With a broad, differentiated product portfolio that includes NOR flash memories, F-RAM™ and SRAM, Traveo™ microcontrollers, the industry's only PSoC® programmable system-on-chip solutions, analog and PMIC Power Management ICs, CapSense® capacitive touch-sensing controllers, and Wireless BLE Bluetooth® Low-Energy and USB connectivity solutions, Cypress is committed to providing its customers worldwide with consistent innovation, best-in-class support and exceptional system value.

### ***Colophon***

The products described in this document are designed, developed and manufactured as contemplated for general use, including without limitation, ordinary industrial use, general office use, personal use, and household use, but are not designed, developed and manufactured as contemplated (1) for any use that includes fatal risks or dangers that, unless extremely high safety is secured, could have a serious effect to the public, and could lead directly to death, personal injury, severe physical damage or other loss (i.e., nuclear reaction control in nuclear facility, aircraft flight control, air traffic control, mass transport control, medical life support system, missile launch control in weapon system), or (2) for any use where chance of failure is intolerable (i.e., submersible repeater and artificial satellite). Please note that Spancion will not be liable to you and/or any third party for any claims or damages arising in connection with above-mentioned uses of the products. Any semiconductor devices have an inherent chance of failure. You must protect against injury, damage or loss from such failures by incorporating safety design measures into your facility and equipment such as redundancy, fire protection, and prevention of over-current levels and other abnormal operating conditions. If any products described in this document represent goods or technologies subject to certain restrictions on export under the Foreign Exchange and Foreign Trade Law of Japan, the US Export Administration Regulations or the applicable laws of any other country, the prior authorization by the respective government entity will be required for export of those products.

### ***Trademarks and Notice***

The contents of this document are subject to change without notice. This document may contain information on a Spancion product under development by Spancion. Spancion reserves the right to change or discontinue work on any product without notice. The information in this document is provided as is without warranty or guarantee of any kind as to its accuracy, completeness, operability, fitness for particular purpose, merchantability, non-infringement of third-party rights, or any other warranty, express, implied, or statutory. Spancion assumes no liability for any damages of any kind arising out of the use of the information in this document.

Copyright © 2013 Spancion Inc. All rights reserved. Spancion®, the Spancion logo, MirrorBit®, MirrorBit® Eclipse™, ORNAND™ and combinations thereof, are trademarks and registered trademarks of Spancion LLC in the United States and other countries. Other names used are for informational purposes only and may be trademarks of their respective owners.

---

# **F<sup>2</sup>MC-8FX FAMILY**

## **8-BIT MICROCONTROLLER**

### **MB95410H/470H SERIES**

---

## **ONE PHASE POWER METER (RN8209) SOLUTION**

## **DISPLAY OPERATION**

### **APPLICATION NOTE**



## Revision History

Version	Date	Updated by	Modifications
1.0.0	6/1/2011	Funny Chen	First Draft : Write the user manual of display function.

This manual contains 12 pages.

Specifications are subject to change without notice. For further information please contact each office.

### All Rights Reserved.

The contents of this document are subject to change without notice.

Customers are advised to consult with sales representatives before ordering.

The information, such as descriptions of function and application circuit examples, in this document are presented solely for the purpose of reference to show examples of operations and uses of FUJITSU SEMICONDUCTOR device; FUJITSU SEMICONDUCTOR does not warrant proper operation of the device with respect to use based on such information. When you develop equipment incorporating the device based on such information, you must assume any responsibility arising out of such use of the information.

FUJITSU SEMICONDUCTOR assumes no liability for any damages whatsoever arising out of the use of the information.

Any information in this document, including descriptions of function and schematic diagrams, shall not be construed as license of the use or exercise of any intellectual property right, such as patent right or copyright, or any other right of FUJITSU SEMICONDUCTOR or any third party or does FUJITSU SEMICONDUCTOR warrant non-infringement of any third-party's intellectual property right or other right by using such information. FUJITSU SEMICONDUCTOR assumes no liability for any infringement of the intellectual property rights or other rights of third parties which would result from the use of information contained herein.

The products described in this document are designed, developed and manufactured as contemplated for general use, including without limitation, ordinary industrial use, general office use, personal use, and household use, but are not designed, developed and manufactured as contemplated (1) for use accompanying fatal risks or dangers that, unless extremely high safety is secured, could have a serious effect to the public, and could lead directly to death, personal injury, severe physical damage or other loss (i.e., nuclear reaction control in nuclear facility, aircraft flight control, air traffic control, mass transport control, medical life support system, missile launch control in weapon system), or (2) for use requiring extremely high reliability (i.e., submersible repeater and artificial satellite).

Please note that FUJITSU SEMICONDUCTOR will not be liable against you and/or any third party for any claims or damages arising in connection with above-mentioned uses of the products.

Any semiconductor devices have an inherent chance of failure. You must protect against injury, damage or loss from such failures by incorporating safety design measures into your facility and equipment such as redundancy, fire protection, and prevention of over-current levels and other abnormal operating conditions.

Exportation/release of any products described in this document may require necessary procedures in accordance with the regulations of the Foreign Exchange and Foreign Trade Control Law of Japan and/or US export control laws.

The company names and brand names herein are the trademarks or registered trademarks of their respective owners.

## Contents

<b>REVISION HISTORY .....</b>	<b>2</b>
<b>CONTENTS .....</b>	<b>3</b>
<b>1 INTRODUCTION .....</b>	<b>4</b>
<b>2 BACKGROUND .....</b>	<b>5</b>
2.1 Overview .....	5
<b>3 HW DIAGRAM .....</b>	<b>6</b>
3.1 The HW diagram of display unit.....	6
<b>4 HW REFERENCE SCH .....</b>	<b>7</b>
<b>5 FW DIAGRAM.....</b>	<b>8</b>
5.1 Firmware System Diagram .....	8
<b>6 FW FUNCTION LIST.....</b>	<b>9</b>
6.1 API .....	9
6.2 HAL.....	10
<b>7 ADDITIONAL INFORMATION .....</b>	<b>11</b>
<b>8 APPENDIX.....</b>	<b>12</b>
8.1 List of Figures and Tables .....	12

# 1 Introduction

This application note describes how to use One Phase Power Meter (RN8209) solution's display function.

Chapter 2 explains the background.

Chapter 3 explains the HW diagram of display function.

Chapter 4 explains the HW reference SCH.

Chapter 5 explains the FW diagram.

Chapter 6 explains the FW function list.

## 2 Background

---

### Background of display Function

---

#### 2.1 Overview

On the power meter box, there are 2 keys, display key and program key. The system's default display mode is auto roll displaying, and each display page delay for 5 seconds. When you put down the display key, display mode will change to manual roll displaying. And if you don't put down the display key for 30 seconds, display mode will change to auto roll displaying again.

## 3 HW Diagram

Hardware diagram of display unit

### 3.1 The HW diagram of display unit

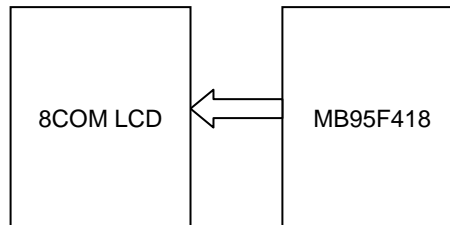


Figure 3-1: Hardware diagram



## 4 HW Reference SCH

Hardware reference SCH of display unit

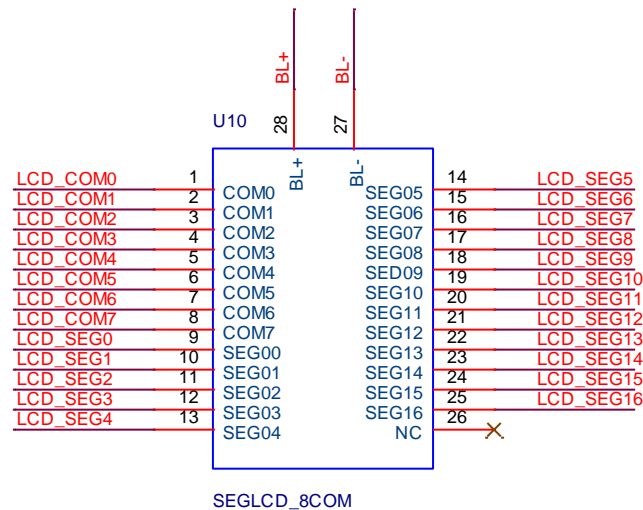


Figure 4-1: 8COM LCD Interface

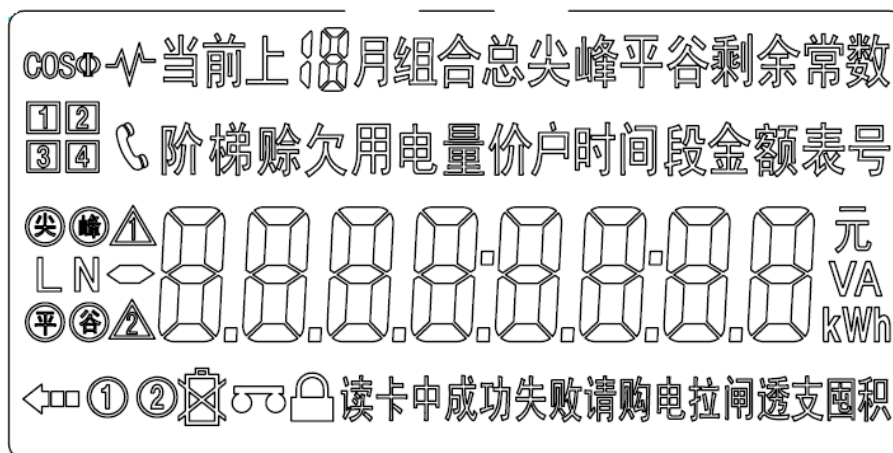


Figure 4-2: 8COM LCD Module

## 5 FW diagram

### Firmware system diagram

#### 5.1 Firmware System Diagram

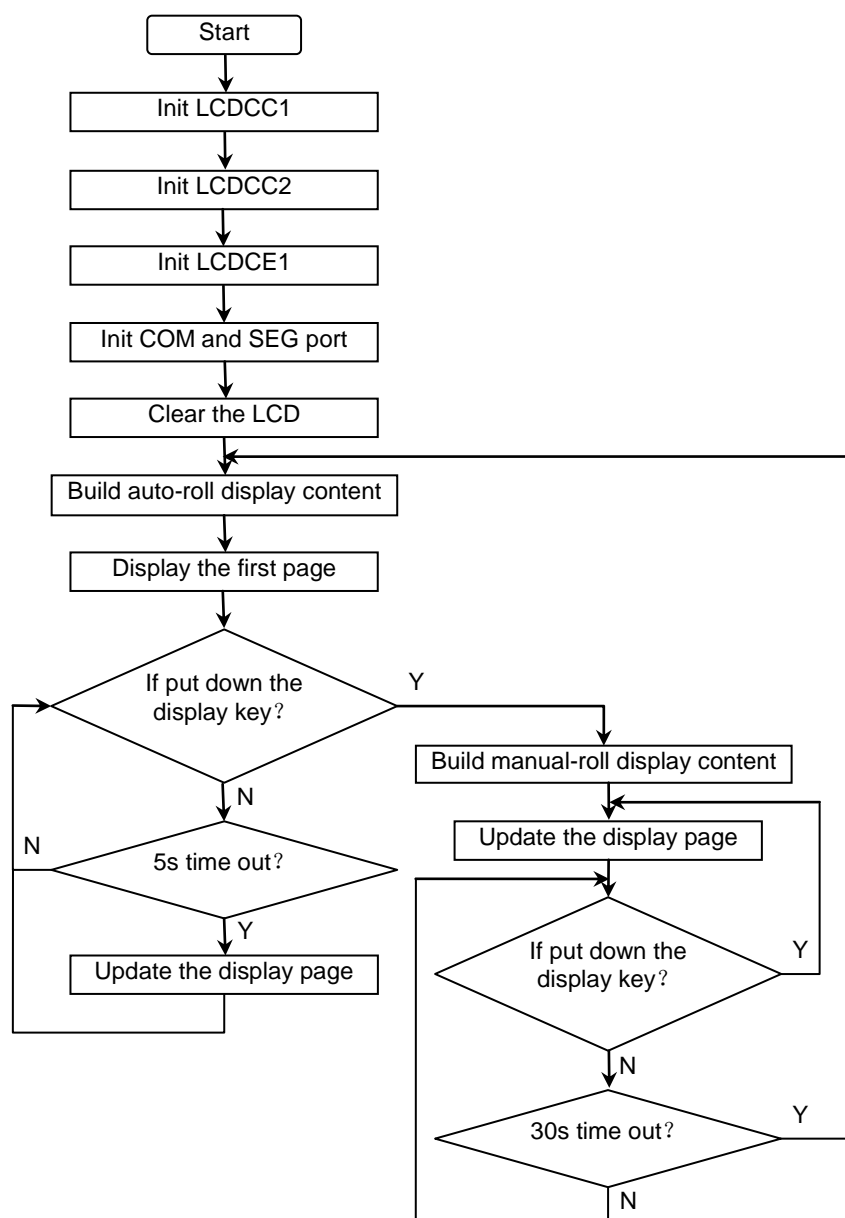


Figure 5-1: Firmware System Diagram

## 6 FW Function List

### 6.1 API

Table 6-1: FW API List

Function Prototype	Description
void Lcd_Init(void)	LCD module initialization
void LoadLcdPara(INT8U* lcdPara)	Load LCD display parameters from EEPROM
void LcdPowerCtl(INT8U pwrNml)	LCD power on/save control
void LcdPageDisplay(void)	Display various data page on LCD screen
void LcdPageManual(INT8U pageSet)	Manual change LCD page
void LcdPageChange(INT8U pageSet)	LCD screen page up/down control
void* FindPageDispThread(INT8U* targetId)	Find page display thread using data ID
void BuildPowerUpLcdPage(void)	Build Power-up LCD page content
void BuildAutoRollLcdPage(void)	Build auto-rolling LCD page content
void BuildManlRollLcdPage(void)	Build manual-rolling LCD page list
void BuildPowerDnLcdPage(void)	Build power-down LCD page content
void LcdParaReloadEnable(void)	Enable LCD parameter reload using system reset
void DispSegmentEnergy(INT8U pageMode, INT8U monthId, INT8U dispSegId)	Display segment energy
void DispPrepayBalance(INT8U pageMode)	Display prepay balance
void DispCurrentTariffRate(INT8U pageMode)	Display current tariff rate
void DispUserNumLow8b(INT8U pageMode)	Display user number low 8 bit
void DispUserNumHigh4b(INT8U pageMode)	Display user number high 8 bit
void DispMeterNumLow8b(INT8U pageMode)	Display meter number low 8 bit
void DispMeterNumHigh4b(INT8U pageMode)	Display meter number high 8 bit
void DispErrorNum(INT8U pageMode)	Display error number
void DispVoltage(INT8U pageMode)	Display voltage
void DispLoadCurrent(INT8U pageMode)	Display load current
void DispNeutralCurrent(INT8U pageMode)	Display neutral current
void DispPower(INT8U pageMode)	Display power
void DispPowerFactor(INT8U pageMode)	Display power factor
void DispCurrentDate(INT8U pageMode)	Display current date
void DispCurrentTime(INT8U pageMode)	Display current time

## 6.2 HAL

Table 6-2: FW HAL List

Function Prototype	Description
void LcdCardCommDisp(INT8U value)	
void LcdEnergyPurchaseDisp(INT8U onOff)	
void LcdEnergyPurchaseDisp(INT8U onOff)	
void BcdCount2LcdDigit(INT8U *bcdCount, INT8U *lcdDigit)	Convert 4 bytes of BCD string to 8 digits of LCD display data string
void LcdMainLineDisp(INT8U* dataStr)	Display main line on LCD screen
void LcdDigitDisp(INT8U digitId, INT8U digitCode)	Display a digit on LCD screen
void LcdColonDisp(INT8U colonTag)	Display colon on LCD screen
void LcdDotDisp(INT8U dpTag)	Display dot-point on LCD screen
void LcdLedTimeSegId(INT8U segId)	Display tariff time-seg LED id
void LcdTxtTimeSegId(INT8U segId)	Display time-seg text id
void LcdDateTimeDisp(INT8U dtState)	Display date/time text
void LcdLastMonthDisp(INT8U month)	Display month
void LcdBattDisp(INT8U battState)	Set LCD battery Display On/Off
void LcdCommDisp(INT8U ch, INT8U commState)	Set LCD Comm Display On/Off
void LcdProgramDisp(INT8U programState)	Set LCD programmable sign Display On/Off
void LcdLockDisp(INT8U lockState)	Set LCD Lock Display On/Off
void LcdKwhDisp(INT8U kwhState)	Set LCD KWh Display On/Off
void LcdKwDisp(INT8U kwState)	Set LCD KW Display On/Off
void LcdRmbDisp(INT8U rmbState)	Set LCD RMB Display On/Off
void LcdEnergyDirDisp(void)	Display Energy direction
INT8U LcdRemoveHeading0(INT8U *buff, INT8U ptPos)	Remove useless heading zero for main display line
void LcdNegativeSignDisp(INT8U onOff)	Set negative sign Display On/Off
void LcdCosineSignDisp(INT8U onOff)	Set cosine sign Display On/Off
void LcdDatSend(INT8U* dispDat, INT8U size)c	Send a string of display data to LCD controller module

## 7 Additional Information

For more Information on FUJITSU semiconductor products, visit the following websites:

English version address:

[http://www.fujitsu.com/cn/fsp/services/mcu/mb95/application\\_notes.html](http://www.fujitsu.com/cn/fsp/services/mcu/mb95/application_notes.html)

Chinese version address:

[http://www.fujitsu.com/cn/fss/services/mcu/mb95/application\\_notes.html](http://www.fujitsu.com/cn/fss/services/mcu/mb95/application_notes.html)

## 8 Appendix

### 8.1 List of Figures and Tables

Table 6-1: FW API List .....	9
Table 6-2: FW HAL List.....	10
Figure 3-1: Hardware diagram .....	6
Figure 4-1: 8COM LCD Interface.....	7
Figure 4-2: 8COM LCD Module.....	7
Figure 5-1: Firmware System Diagram.....	8