

P-MAPS 2015

User Manual

INTRODUCTION	3
Main Features Of Telmar P-Maps	3
SETTING UP YOUR CROSSTAB	4
Getting Started.....	4
Entering Your Table Base.....	4
Entering Your Two Columns	4
Entering Your Rows.....	4
PLOTTING YOUR P-MAP	5
Accessing P-maps	5
CHANGING THE APPEARANCE OF YOUR GRAPH	7
Moving Data Labels.....	7
Colour Data Labels	7
Editing The Number Of Brands Shown On Your Map.....	8
Data Labels/Data Lines/Data Bubbles	8
Free Arrows And Free Labels	9
Weighted Symbols.....	10
X/Y Axis and Title Text.....	12
Scrolling And Zooming	13
The Background Of The Map	13
Logos And Pictures	14
Origin At 100 And Resize For Best Fit.....	15
SAVING AND EXPORTING YOUR P-MAP	16
Saving Your P-Map As A Default Template File	16
Saving Your P-Map As A Graph File.....	16
Opening A Previously Saved P-Map.....	16
Saving Your P-Map For Use Within PowerPoint (Or Graphics Package).....	16
Copying/Pasting Your P-Map Into PowerPoint (Or Graphics Package).....	17
Setting Up P-Maps Using Your Own Data.....	17
SETTING UP P-MAPS USING YOUR OWN DATA.....	18
Entering your own data.....	18
HOW DO I ...?	20

INTRODUCTION

Telmar's innovative P-Maps program allows clients to plot full-colour graphs directly from TNT+ or using their own data (please see page 18 of the manual). To create a map directly from TNT+ all the user has to do is enter two columns in TNT+ (e.g. 'Age 45+'; 'Class ABC1') together with a selection of rows (usually brands). In a matter of seconds P-Maps will plot your TNT+ data as a full colour graph, with your two columns represented by the X and Y axes.

Main Features Of Telmar P-Maps

- A quick and easy way to obtain an instant overview of a market.
- Graphs are plotted directly from TNT+.
- Full-colour graphs.
- Brand sizes can be represented by different sized circles.
- Ability to customise the appearance of your P-Map.
- Option of exporting your P-Map into PowerPoint or a similar graphics package.

SETTING UP YOUR CROSTAB

Getting Started

Click on the TNT+ icon. Select the survey you wish to use, for example TGI 2007 Q1 (October 2005- September 2006).

Entering Your Table Base

Now select the group of people on which you wish to base your Crosstab. In this example we have chosen a base of 'Men'.

1 Table / Base		2 Columns		0 Rows	
	Title		Code		
1	All Men		MM		
2					

Entering Your Two Columns

The columns you select here will represent the X and Y axes on your P-Map. Remember to enter just two columns, as P-Maps only plots in two dimensions.

In the example below, we have chosen to plot a selection of brands by age and class. We have selected the two columns: 'Age 45+' and 'Class ABC1'.

1 Table / Base		2 Columns		0 Rows	
	Title		Code		
1	Age 45+		(A4554 OR A5564 OR A65)		
2	Social Grade ABC1		ABC1		
3					

Entering Your Rows

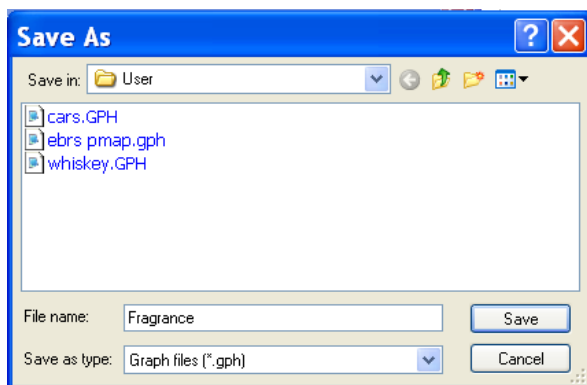
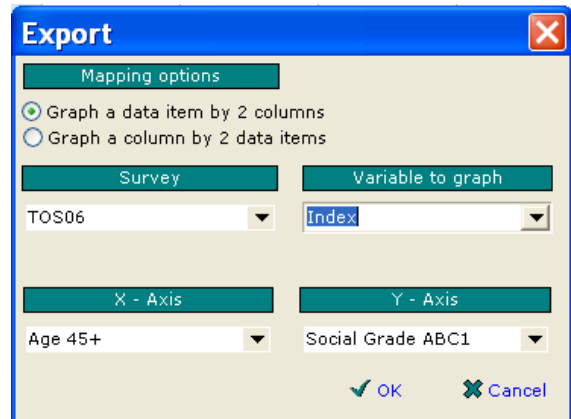
Now enter the brands that you wish to plot on your P-Map. These should be entered separately, as shown below. In this example, we have chosen a selection of After Shave/Male Fragrance brands.

1 Table / Base		2 Columns		50 Rows	
	Title		Code		
1	Addiction		(015`43`Y OR 015`44`Y)		
2	Adidas		(015`43`X OR 015`44`X)		
3	Armani Aqua Di Gio		(015`43`0 OR 015`44`0)		
4	Armani Eau Pour Homme		(015`43`2 OR 015`44`2)		
5	Other Armani		(015`51`8 OR 015`52`8)		
6	Aramis		(015`43`1 OR 015`44`1)		

PLOTTING YOUR P-MAP

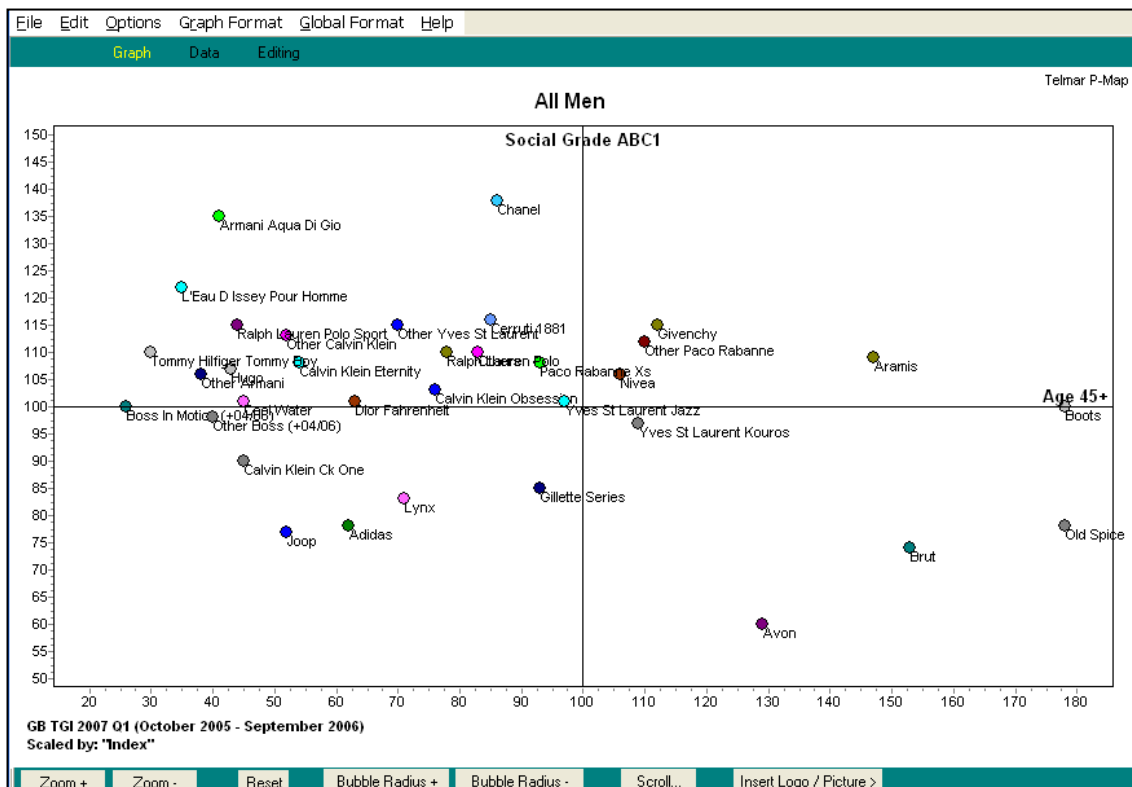
Accessing P-maps

Select 'File' and then 'P-maps' from the TNT+ menu. You are asked to choose one of two mapping options: 'Graph a data item by 2 columns' or 'Graph a column by 2 data items'. Choose the first option. In this same window you can select a 'Variable to graph' e.g. index or audience and specify the X and Y axis.

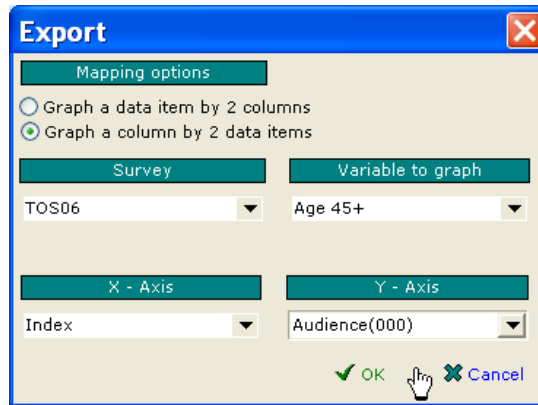


You will now be prompted to save your graph file. This will have been given the same name as your TNT+. Click on 'Save'.

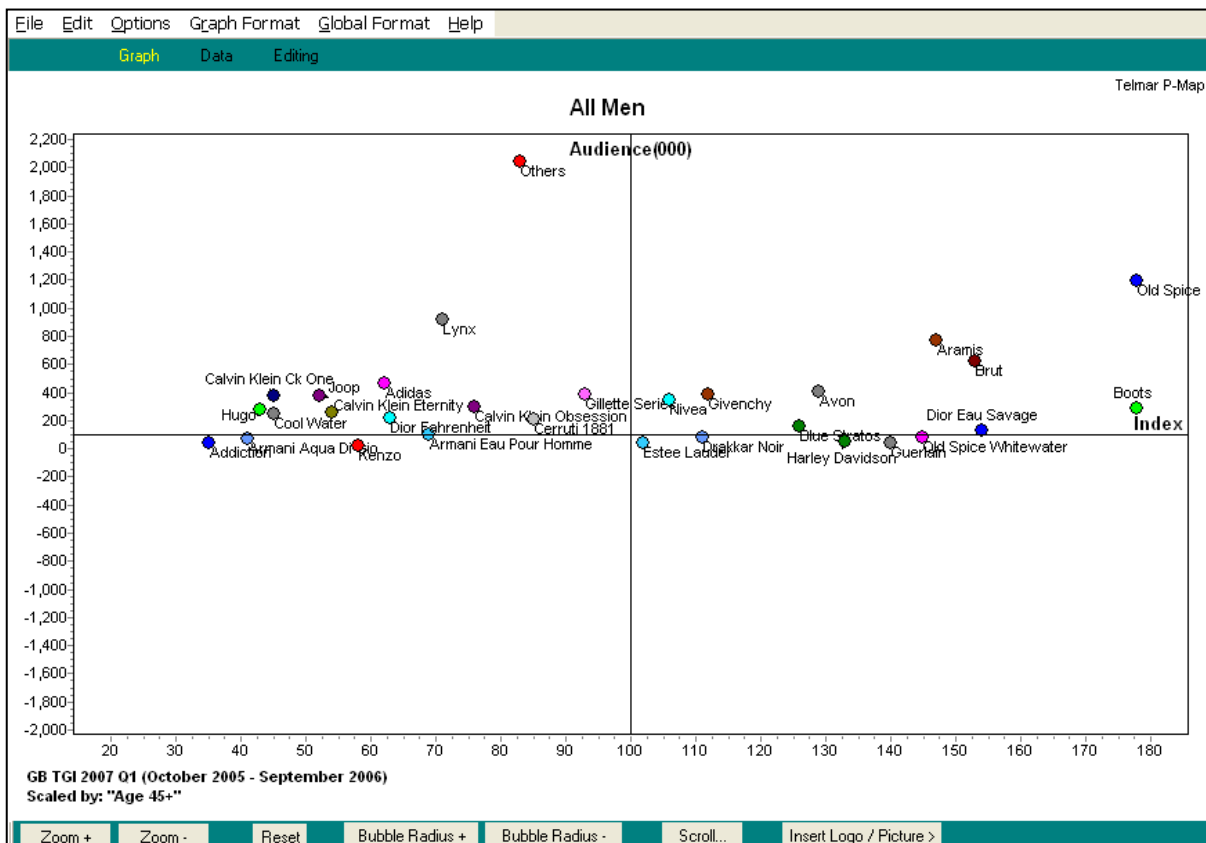
Your map will now look like this:



Alternatively, if you select the second option - 'Graph a column by 2 data items'. Choose two different data items for the X and Y axis



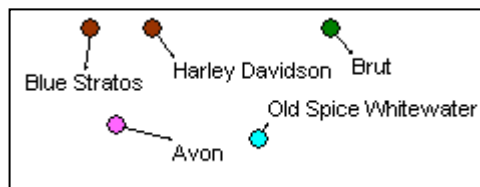
This graph looks like this:



CHANGING THE APPEARANCE OF YOUR GRAPH

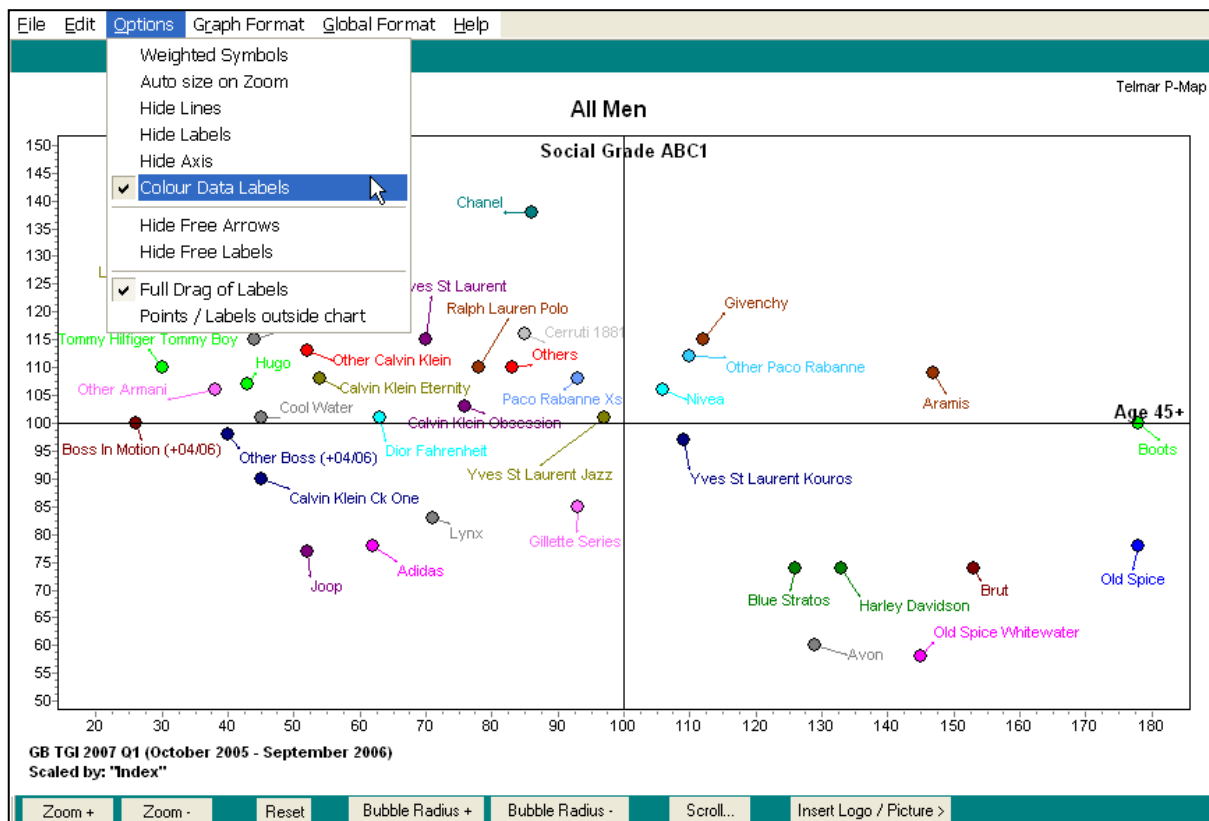
Moving Data Labels

- When the program has plotted your P-Map, you may find that some of your data labels are overlapping with each other, particularly if you have entered a large number of brands. To move a data label, simply click on it and drag it to the required position. A line will automatically lead from the data point.



Colour Data Labels

- To change the characteristics of all labels, lines and bubbles, select 'Options', 'Colour Data Labels'. Each brand label will automatically be given a different colour. As indicated in the map below:
- If you wish to temporarily remove the visibility of all your brands select 'Options', 'Hide Labels/Lines'.



Editing The Number Of Brands Shown On Your Map

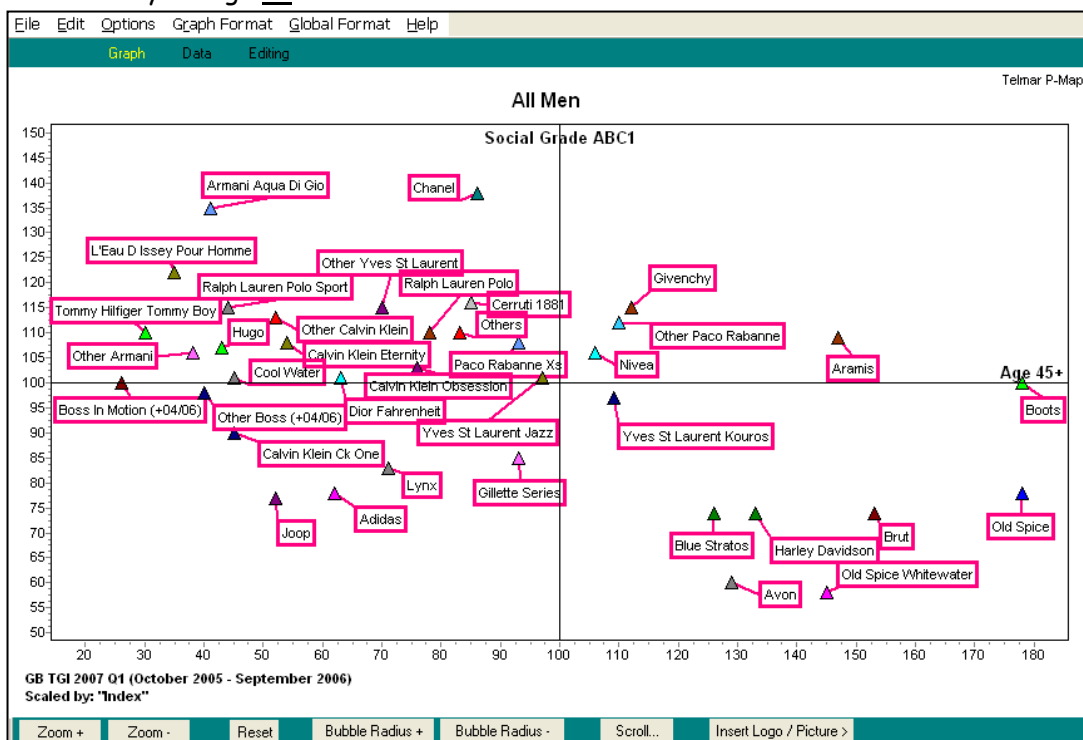
- All the brands entered in TNT+ will be shown on your map. If, however, you wish to limit the number of brands shown, e.g., to just the larger ones, click on the 'Data' option next to 'Graph'.
- To sort brands by audience size, click on 'Weight'. To eliminate the smaller rows, click on the first brand you wish to

Visible	Title	Weight
<input checked="" type="checkbox"/>	50 Others	(5107)
<input checked="" type="checkbox"/>	35 Lynx	(2701)
<input checked="" type="checkbox"/>	11 Calvin Klein Ck One	(1745)
<input checked="" type="checkbox"/>	2 Adidas	(1546)
<input checked="" type="checkbox"/>	31 Joop	(1513)
<input checked="" type="checkbox"/>	37 Old Spice	(1394)
<input checked="" type="checkbox"/>	27 Hugo	(1366)
<input checked="" type="checkbox"/>	17 Cool Water	(1140)
<input checked="" type="checkbox"/>	6 Aramis	(1092)
<input checked="" type="checkbox"/>	12 Calvin Klein Eternity	(999)
<input checked="" type="checkbox"/>	23 Gillette Series	(855)
<input checked="" type="checkbox"/>	47 Yves St Laurent Kouros	(845)
<input checked="" type="checkbox"/>	10 Brut	(845)
<input checked="" type="checkbox"/>	13 Calvin Klein Obsession	(808)
<input checked="" type="checkbox"/>	29 Other Boss (+04/06)	(746)
<input checked="" type="checkbox"/>	42 Ralph Lauren Polo	(724)
<input checked="" type="checkbox"/>	18 Dior Fahrenheit	(724)
<input checked="" type="checkbox"/>	24 Givenchy	(710)
<input type="checkbox"/>	14 Other Calvin Klein	(690)
<input type="checkbox"/>	36 Nivea	(677)
<input type="checkbox"/>	7 Avon	(658)
<input type="checkbox"/>	39 Paco Rabanne Xs	(603)
<input type="checkbox"/>	40 Other Paco Rabanne	(598)
<input type="checkbox"/>	30 L'Eau D Issey Pour Homme	(570)
<input type="checkbox"/>	5 Other Armani	(558)
<input type="checkbox"/>	15 Cerruti 1881	(512)

eliminate from the list, and then on the 'Toggle Select' button. Only the larger brands will now be selected. There is also the choice to 'Select All' the brands or 'Select None'. Press 'Graph' to return to the map, as the following picture shows.

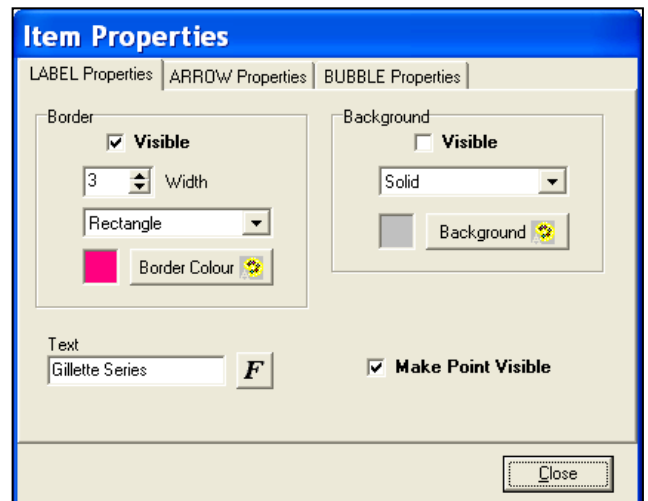
Data Labels/Data Lines/Data Bubbles

- The Top menu 'Global Format', Data Labels/Data Lines/Data Bubbles allows you to collectively change all brands.

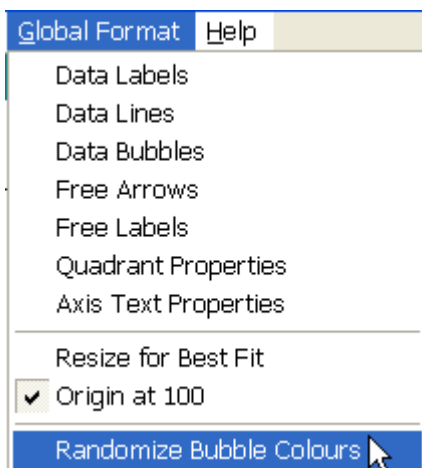


- To individually alter a label, line or bubble place the cursor on the brand you wish to change and than right-hand click on your mouse, the 'Label Properties' box option appears.

- When individually altering labels you are given three options: 'Label/Arrows/Bubble Properties', from 'Label Properties' you can add a border and background to a specified width, shape and colour. In 'Line Properties' you can change the width colour, and the arrowhead height and width. In 'Bubble Properties' a border can be created with colour, shape and background.



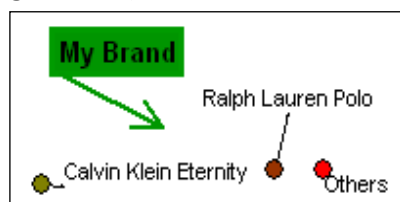
- To hide or make invisible a particular brand on the graph, either right-hand click on the brand and select 'Hide This Point' or in 'Label Properties' de-select 'Make Point Visible'.
- When a bubble that you want shown on the map is hidden behind another, right-hand click on the large bubble and a box with the option - 'Bring To Front' will appear, select it, and the small bubble will appear in front.



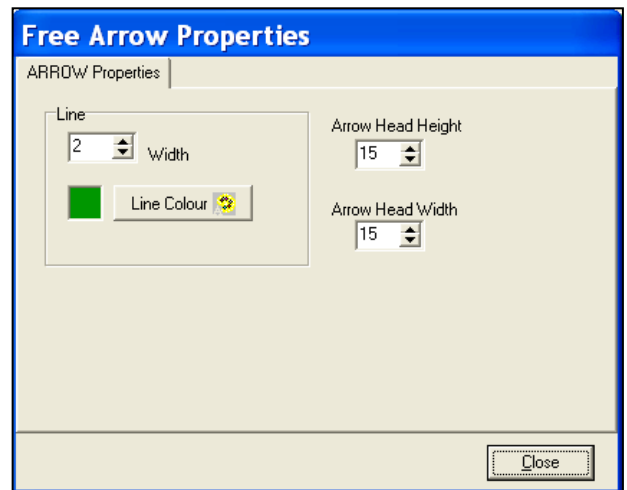
- When all Bubbles have been changed to the same colour, if you than decide that you would like a different colour for all bubbles, go to the drop-down menu 'Global Format', 'Randomise Bubble Colours'.

Free Arrows And Free Labels

- To give particular emphasis to a brand on your map you can place additional arrows and labels anywhere on your map by clicking on 'Graph Format', 'Add Free Arrows/Labels'.

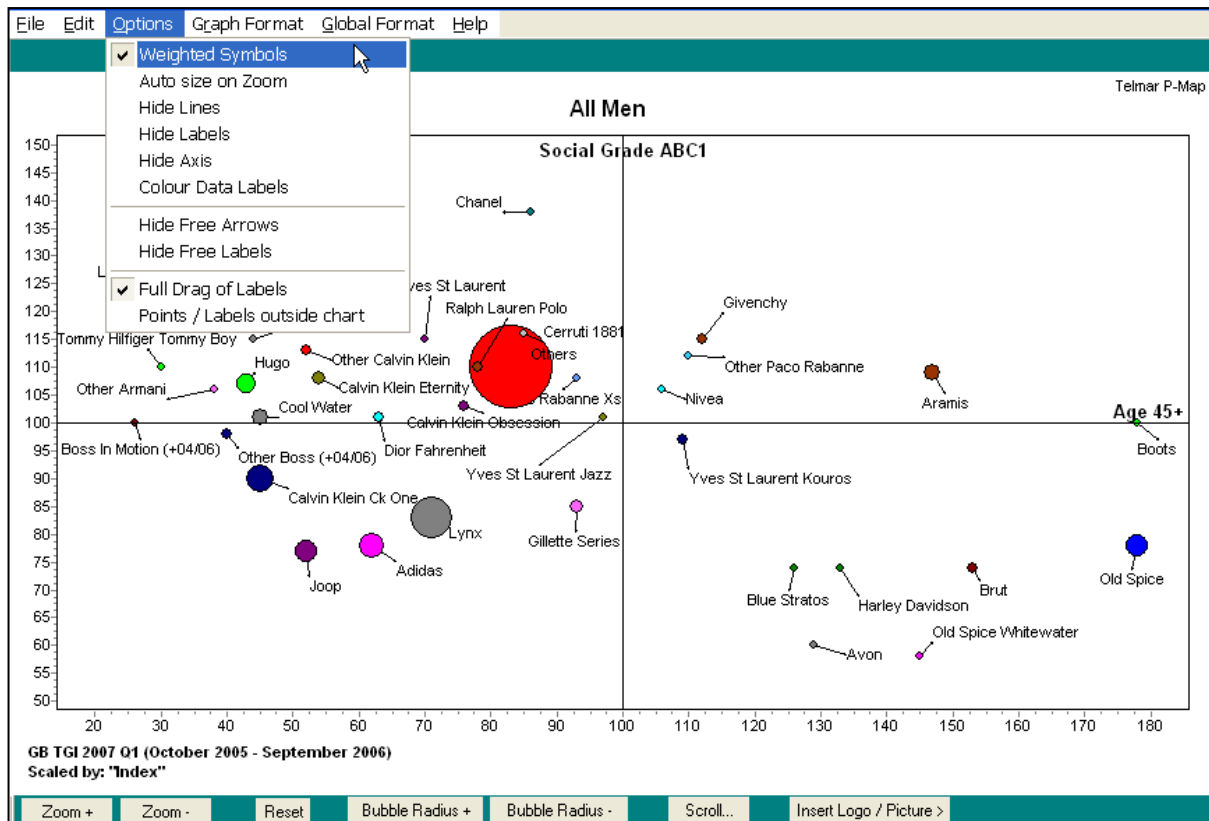


- Under drop down menu 'Global Format', 'Free Arrows/Free Labels' allows you to alter the characteristics of all arrows and labels globally. If you decide that you no longer require additional arrows and labels select 'Options', 'Hide Free Arrows/Labels'. Alternatively you can delete individual arrows and labels by RHC, select 'Remove Arrow/Label'.



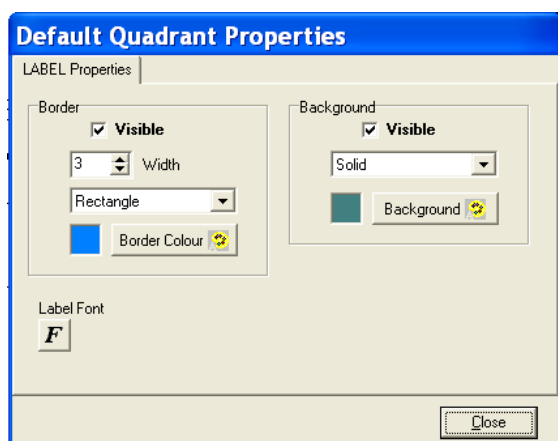
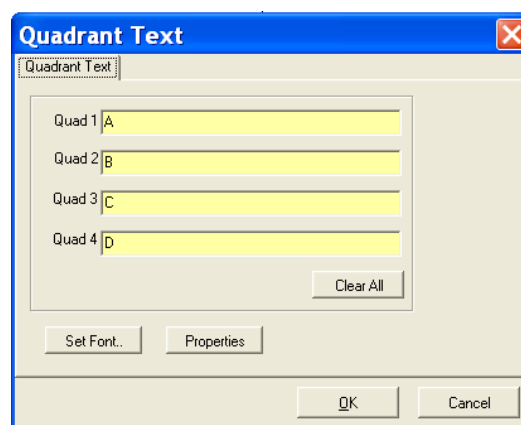
Weighted Symbols

- This option instantly changes the size of each data point to reflect the size of the brand; the larger the brand (in terms of audience), the bigger the data point will be. To weight your data points, select 'Options' and then 'Weighted Symbols' from the top menu. Below a graph with weighted symbols:



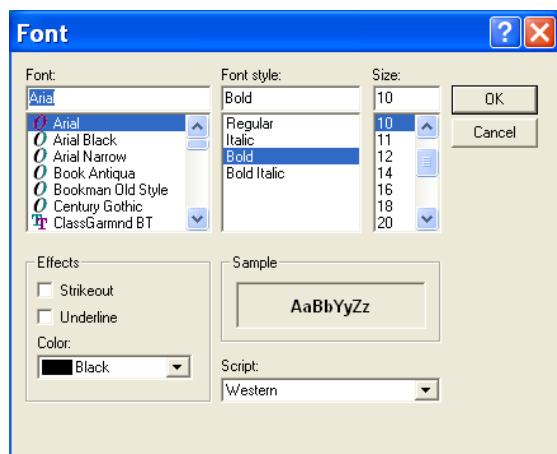
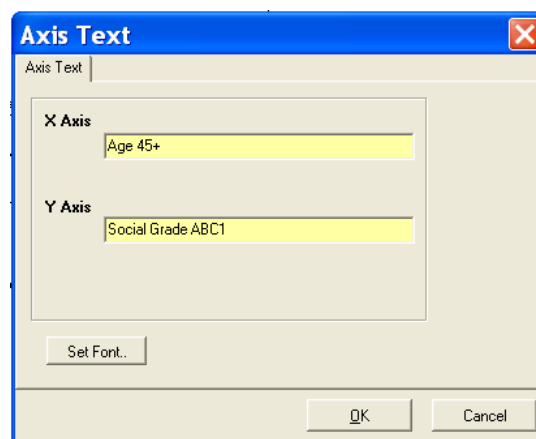
Quadrant Text And Axis Text

- Your map is divided into four quadrants. These can be labeled in order to enhance your audience's understanding of the map. To add a quad text, select **'Graph Format', 'Quadrant Text'** from the top menu, and type in your text. By selecting **'Properties'** you can add a border and background, and **'Set Font'** allows you to change the font if you so wish.



- Within the **'Quadrant Text'** is the **'Properties'** button, this allows you to give the text a visible border and background, to a specified width, colour, style and font. Alternatively, **'Quadrant Properties'** can be accessed through the **'Global Format'** drop-down menu.

- If you wish to abbreviate the X and Y axis text, alter it or change the font go to **'Graph Format', 'Axis Text'**.
- If you wish to hide the X and Y axis, select **'Options', 'Hide Axis'**.



- The **'Set Font'** button in the **'Axis Text'** window can also be accessed from **'Global Format', 'Axis Properties'**. In this screen the font characteristics can be changed.

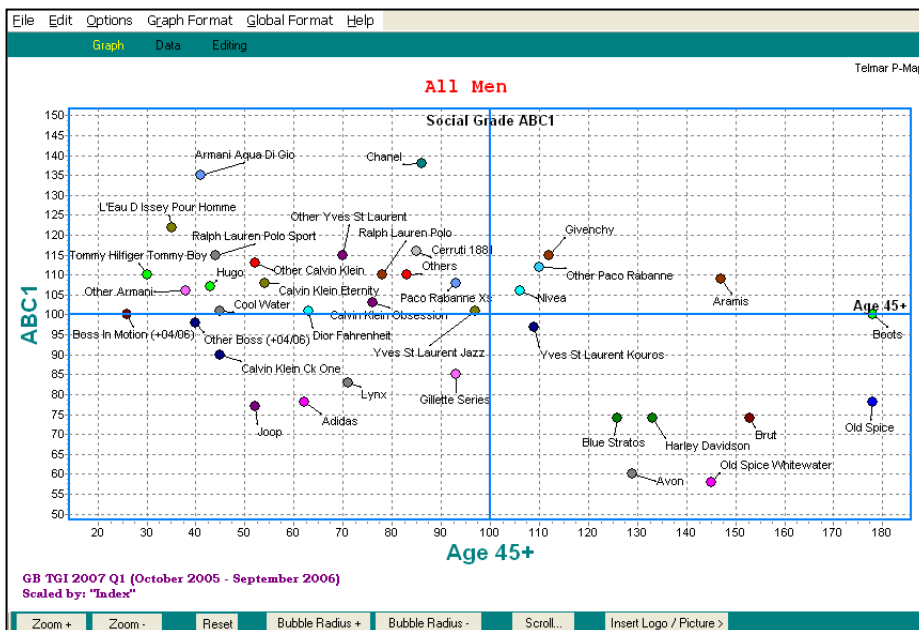
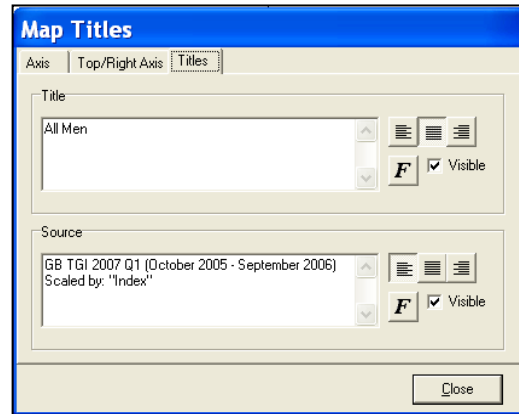
X/Y Axis and Title Text

- To label the X and Y axis, select 'Graph Format', 'Title' and type in a text. The 'Axis' window also allows you to type in an X and Y axis text, change the font, add grid lines and keep or remove the axis values. The X and Y axis degree values can be altered. The option now also exists to change the colour and width of the X and Y axis and line border.



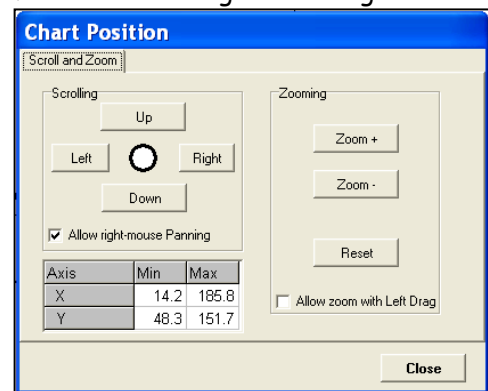
- The TOP/RIGHT AXIS window also allows you to type in a Top and Right axis text and change the font. The TOP/RIGHT axis degree values can be altered.

- The 'Titles' window allows you to add a title and source, alter the font giving them a left, right or centre alignment.
- Here is an example of some of the changes you can make:



Scrolling And Zooming

- To Scroll and Zoom select '**Graph Format**', '**Chart Position**', '**Scroll and Zoom**'. Scrolling allows you to scroll 'up' and 'down' the values of the 'X' axis, and 'left' to 'right' for the values of the 'Y' axis.
- 'Zoom +'** allows you to zoom-in on specific brands or groups of brands. **'Zoom -'** gives you the ability to move away from specific brands and zoom-out of the graph. The **'Reset'** button turns any changes back to normal.
- 'Allow zoom with left-drag'** enables you to use the left-hand side of your mouse to zoom-in to the graph by using specific points where brands have been plotted on the map. Simply, click and drag (a straight line) on a data point of your choice.
- 'Allow right-mouse Panning'** gives you the ability to simultaneously move all the brands plotted on the map to any quadrant of the map with the aid of the mouse. Place the cursor on the section you wish to move and click and drag with the right-hand side of the mouse, the brands will move in any direction. The values of the X and Y axis change according to where the brands are moved to on the map.
- The minimum and maximum X and Y axis values can also be changed.
- Alternatively, **'Zoom +'**, **'Zoom -'** and **'Scroll...'** are also located on the button panel.



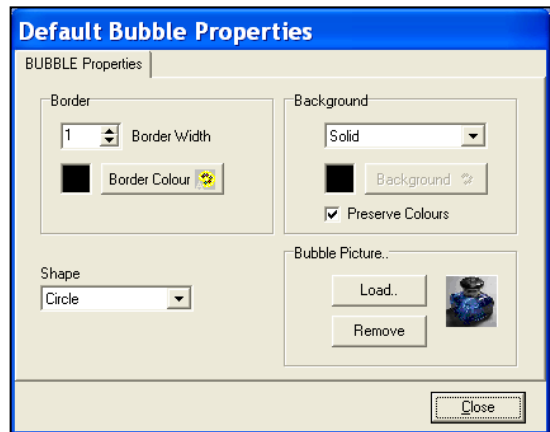
The Background Of The Map

- To change the background of the map and the border, select '**Graph Format**', '**Background**'.
- You can choose colour gradients for the border by clicking on '**Gradient**', '**Start**'/'**End**' colour. The background of the map can be given a separate colour by clicking on '**Plot Area Colour**'.
- Clicking on '**Solid**' gives you a solid band of colour for the background and the border.

**BACKGROUND/
PLOT AREA**

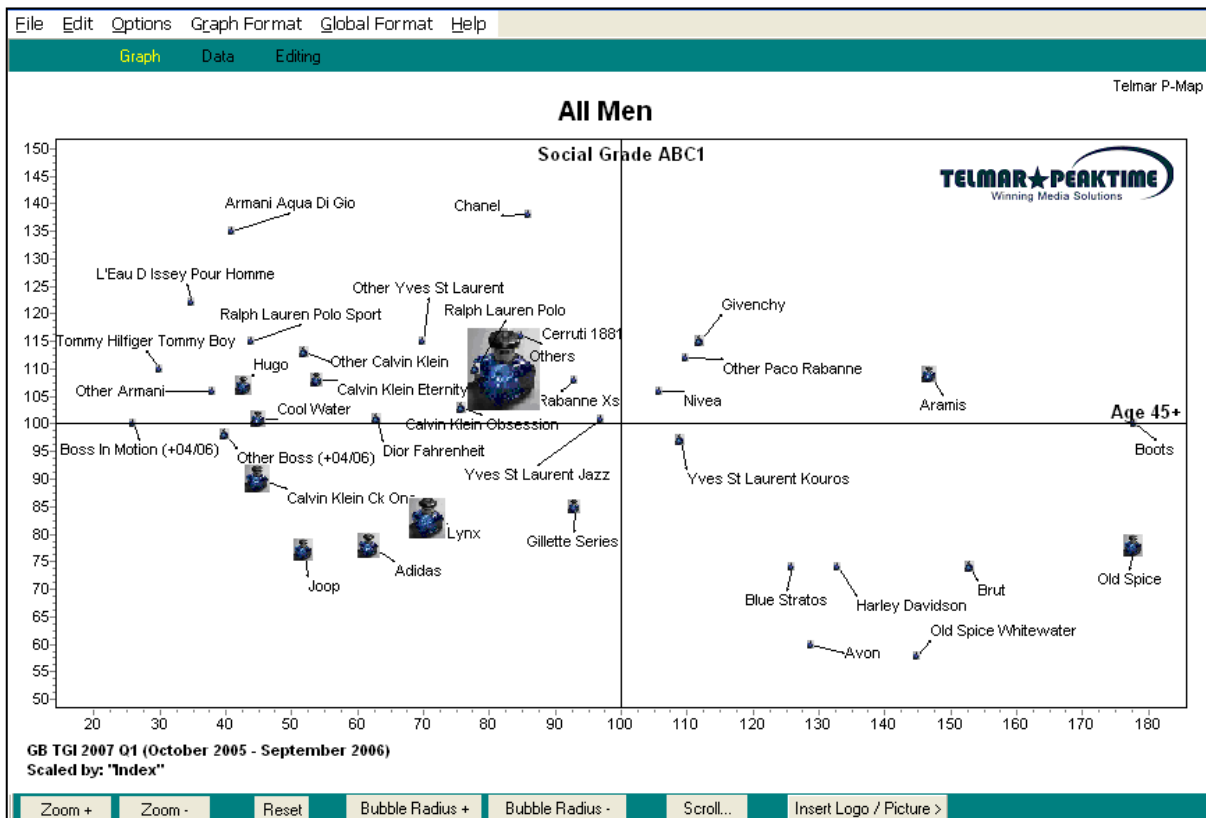
BORDER

- The 'Picture' option in 'Chart Area' allows you to add a picture or company Logo. Click on 'Load Picture' and then 'Remove Picture' if you wish.
- To load smaller pictures to the background of your map, click on 'Insert Logo/Picture' on the button panel at the bottom of the map. By choosing 'Insert Picture' an icon (ico), Metafile (wmf), Bitmap (bmp) or JPEG Image File (JPEG), picture can be loaded. The location of the image appears on the button panel. The image can be dragged around the map; by right-hand clicking on the image a box appears allowing you to duplicate or remove your picture.
- There is also a 'Remove' button on the panel. To return to the original button panel click on 'Back to Graph'.
- It is possible to change the data bubbles to a picture. Go to 'Global Format', 'Data Bubbles' which opens up the **Default Bubble Properties** window. Select Load under Bubble picture to add your image.



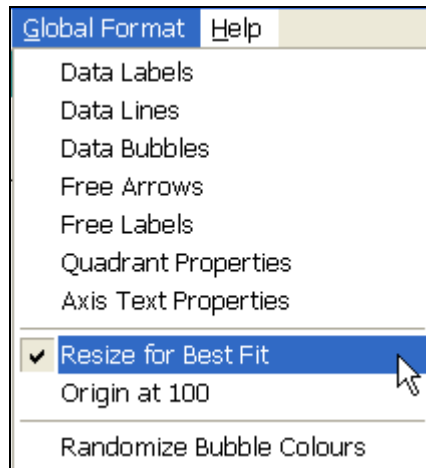
Logos And Pictures

The P-Map below has weighted symbols and a logo added as a picture:



Origin At 100 And Resize For Best Fit

- As a default your X and Y origin is set at an index of 100. The '**Resize for Best Fit**' will alter the origin, if you desire to reset at 100, select '**Origin at 100**' under '**Global Format**'.
- '**Resize for Best Fit**' resets your X and Y-axis so that all brands sit on the map comfortably.



Copying/Pasting Your P-Map Into PowerPoint (Or Graphics Package)

Alternatively, if you wish to paste your P-Map straight into PowerPoint, click on 'Edit' and then 'Copy as Bitmap', 'Copy as Metafile'. Go into the program and click on paste. Your P-Map will now appear. From the same option the data values can be copied into Excel, click on 'Copy as Value'.

Setting Up P-Maps Using Your Own Data

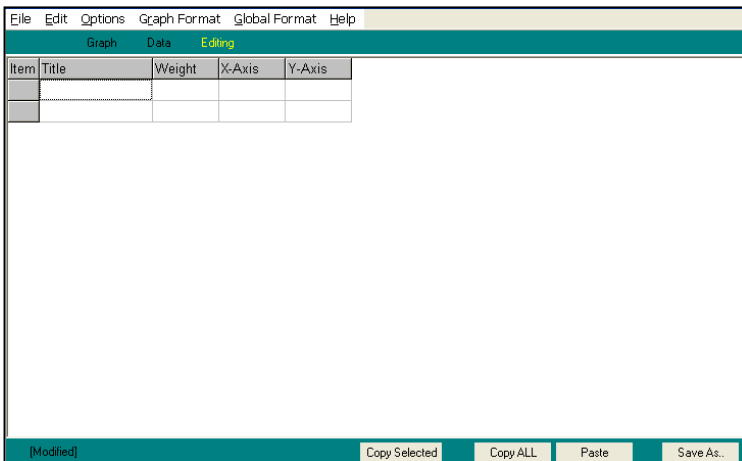
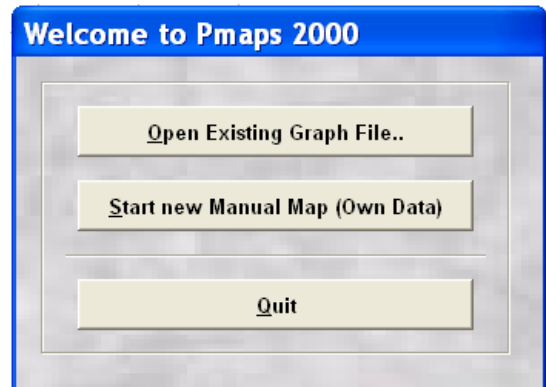
Telmar's innovative P-Maps program allows clients to plot full-colour graphs using their own data. All the user has to do is enter four criteria, seconds later a versatile graph is drawn. The graph can then be easily customised with the ability to:

- *Change the scale of your axis*
- *Automatic resize the chart for best fit*
- *Save your own templates (e.g. Font sizes)*
- *Bubble radius size options*
- *Zooming and Panning facility*
- *Logos/Pictures can be imported as bubbles and backgrounds*
- *Export facility into Powerpoint or similar graphics package*

SETTING UP P-MAPS USING YOUR OWN DATA

Entering your own data

Open P-Maps and select the 'Start New Manual Map (Own Data)' option.



This is the first grid you will see.

Enter the title that you want shown on the map, then place the total universe size of the item in that row in the **WEIGHT** cell. Secondly, enter X and Y axis variables; this tells the program where you want the title to sit on the map.

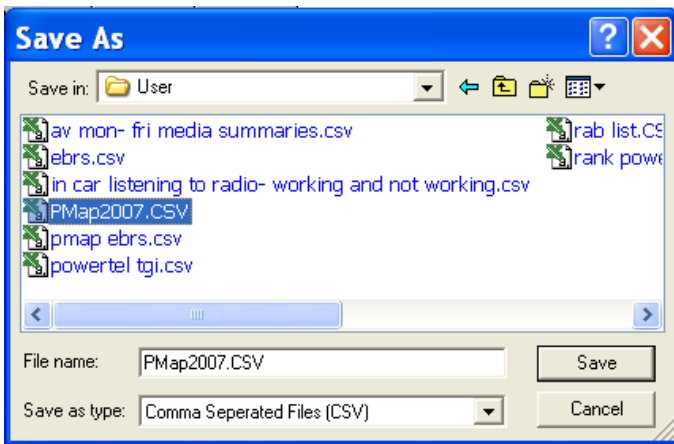
Item	Title	Weight	X-Axis	Y-Axis
1	Peugeot 206	1077	81.5	82.5

To add extra rows double click on the next available row.

You can either manually input your data as shown above or paste data into the grid from another application using **PASTE** button.

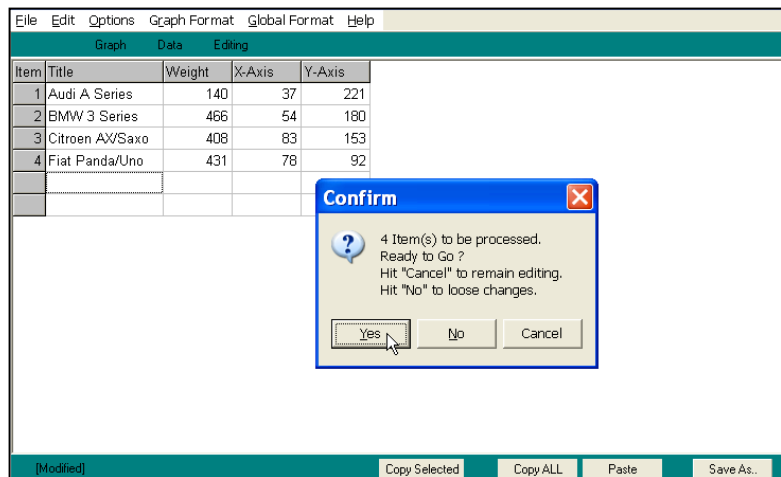
You can highlight rows and copy the data into other packages, by selecting the relevant rows and then clicking on **COPY SELECTED**. If you want to copy the whole grid into other packages click on the **COPY ALL** button.

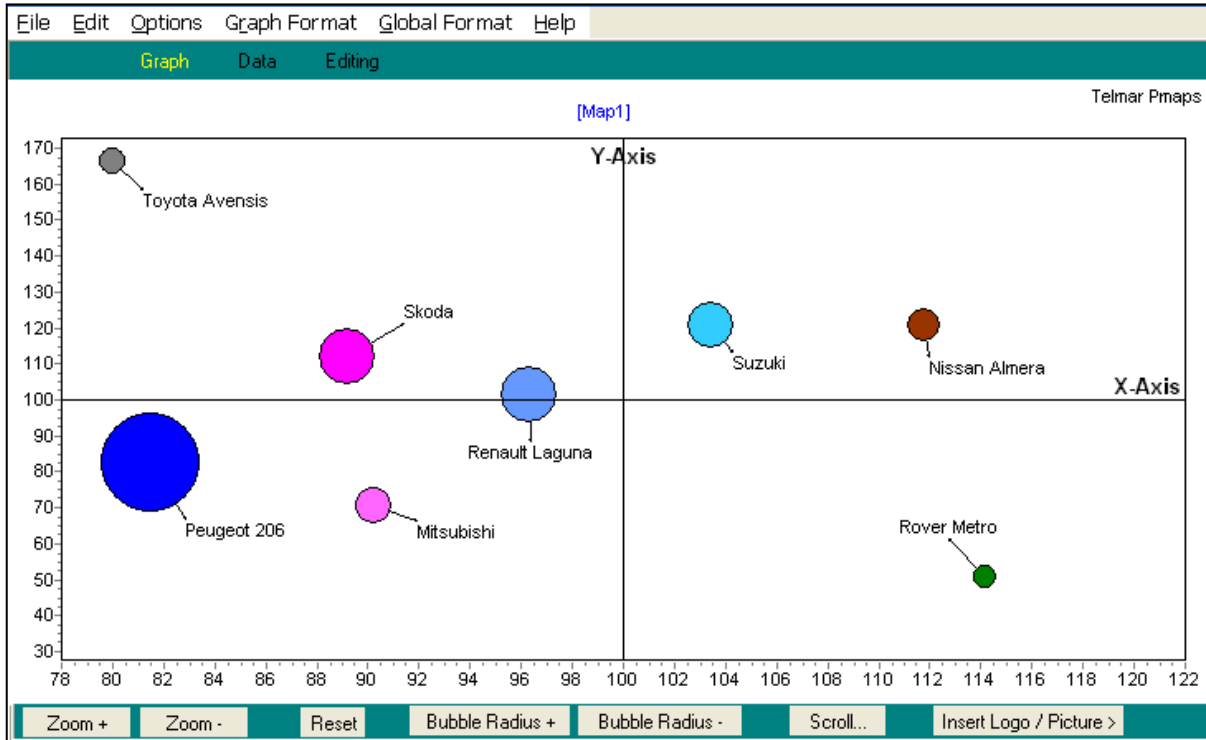
File Edit Options Graph Format Global Format Help				
Graph		Data	Editing	
Item	Title	Weight	X-Axis	Y-Axis
1	Peugeot 206	1077	81.5	82.5
2	Skoda	625	89.2	111.9
3	Renault Laguna	619	96.3	101.6
4	Suzuki	519	103.4	120.5
5	Mitsubishi	427	90.2	70.5
6	Nissan Almera	394	111.8	120.8
7	Toyota Avensis	288	80	166.1
8	Rover Metro	277	114.2	50.7



The **SAVE AS** button saves the data as a **.CSV** file.

To see the graph, click on the **GRAPH** button. The program confirms how many items will be processed. Select **YES** to continue and the graph will appear.





To customize your graph use the options available under the drop down menus: **OPTIONS**; **GRAPH FORMAT**; **GLOBAL FORMAT**. For a full explanation of the graph options available please see pages 7-15.

HOW DO I ...?

