



**MAX T110**





**CAUTION**  
**RISK OF ELECTRIC SHOCK**  
**DO NOT OPEN**



The lightning flash with arrowhead symbol, within an equilateral triangle, is intended to alert the user to "dangerous voltage" and to prevent from a risk of electric shock

Warning: To reduce the risk of electric shock, don't open the cabinet. Refer servicing to qualified personnel only.

The exclamation point within an equilateral triangle is intended to alert the user to important operating and maintenance (servicing).

**WARNING:** Do not use this STB where contact with or immersion in water is a possibility. Do not use near flower vase, washbowls, kitchen sinks, laundry tubs, swimming pools, etc.

**WARNING:** Do not put the candle or lamp stand on the cabinet; otherwise, there is the danger of fire.

**WARNING:** The unit should be connected to a power supply only of the type described in the operating instructions or as marked on the unit. If you are not sure of the type of power supply (for example, 120 or 230 V) to your home, consult your local dealer or local power company.

**WARNING:** This product install diodes. Do not open the cabinet or touch any parts in the inner mechanism. Consult your local dealer for technical service if the opening is required.

**Note:** To ensure proper use of this product, please read this User manual carefully and retain for further reference.

**Unit Cleaning:** After the unit power is turned off, you can clean the cabinet, panel and remote control with a soft cloth lightly moistened with a mild detergent solution.

**Attachments:** Never add any attachments and/or equipment without the manufacturer consent; as such additions may result in the risk of fire, electric shock, or other personal injury.

**Locating:** Slots and openings in the cabinet are provided for ventilation to protect it from overheating. Do not block these openings or allow them to be blocked by placing the STB on a bed, sofa, or other similar surface, nor should it be placed over a radiator or heat register.

**Power-Cord Protection:** Place the power-supply cord out of the way, where it will not be walked on. Please take special attentions to cords at plugs, convenience receptacles, and the point where they exit from the unit.

**Object and Liquid Entry:** Never put objects of any kind into this STB through openings, as they may touch dangerous voltage points or short-out parts that could result in a fire or electric shock. Never spill any liquid on the STB.

**Note:** Moisture may be formed on the lens In the following conditions:

- when the unit is suddenly moved from a cold environment or an air-condition room to a warm place.
- immediately after a heater has been turned on.
- in a steamy or very humid room.

If the moisture forms inside the unit, it may not operate properly. To correct this problem, turn ok the power and wait about two hours for the moisture to evaporate.

**Parts Replacement:** When the unit parts need to be replaced, user should make sure the service technician use the replacement parts specified by the manufacturer or having the same characteristics as the original part. Unauthorized replacement may put the unit In the risk of fire, electric shock or other hazards.

**Safety Check:** After all the maintenances and repairs are done, user is required to request the service technician to conduct the overall safety check to ensure the machine is in the proper condition.

rev 1.0

## QUICK INSTALLATION GUIDE

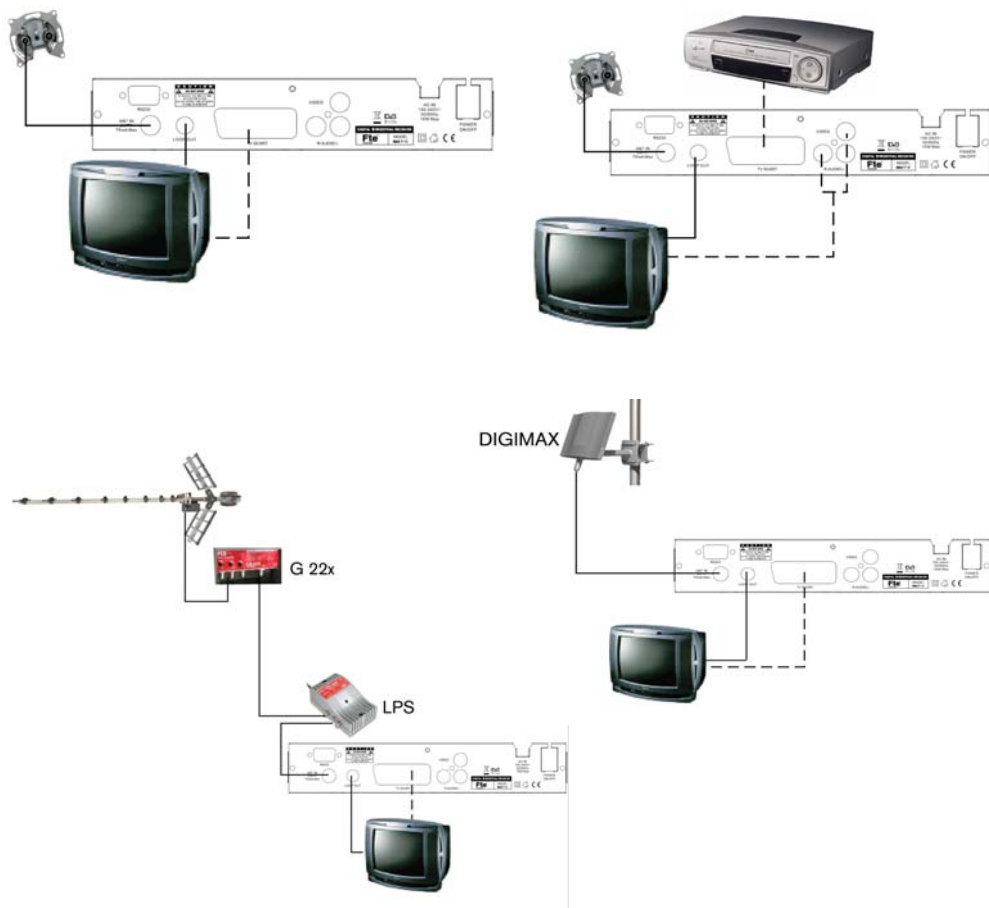
Follow next steps for the correct installation of this receiver.

### STEP 1: CONNECTIONS

Connect a coaxial cable from the output socket to the "Antenna Input" connector. Connect a coaxial cable from the "Loop out" connector at the receiver to your TV input connector as it is shown in Scheme1.

Model without modulator:

This receiver has not built in modulator so it has to be connected to the TV through a SCART cable.



## STEP 2: BASIC CONFIGURATION OF THE RECEIVER

The receiver includes an installation assistant that will help you to setup the different parameters.

When the receiver is turned on at first time (using the button at the rear panel of the receiver), the next menu is shown on the TV:



IMAGE 1

In order to move through the different options of this menu, please use the keys of the remote control. If an "Overloading! Tuner Power is Off" message is shown on the TV, please disconnect the "Antenna Input" cable and change the "Tuner Power" option into "Off"

**OSD Language:** select the language of the menu and other information of the receiver. To choose between the different languages, use keys of the remote control.

**First Audio:** press the keys of the remote control to choose the favourite audio language for TV and Radio channels.

**Second Audio:** press the keys of the remote control to choose the second audio language. In case of, when selecting a TV or Radio channel that has not the favourite language, the second language selected will be automatically listened (if this action is allowed).

**Country:** select your country using keys.

**Tuner Power:** this receiver has the possibility of feeding a 5V indoor antenna directly through the coaxial cable. If you have not an indoor antenna and the receiver is connected to a MATV antenna, you should turn off this option using keys until [Off] option appears on the TV.

**Auto Scan:** before making an auto scan be sure that the data of the Country option (Image 1) is correct, in other case the search of channels will be made wrongly. Once the Country option is confirmed, please select the option "Auto Scan" and press [OK].

Don't make any action with the receiver until the Auto scan has finished. For more information about this option, please read point 4.1 of the complete manual.



IMAGE 2

**Main Menu:** if all the previous steps have finished correctly, you can exit the installation menu, by using "Main Menu" option and press [OK].

## STEP 3: TIME CONFIGURATION

It is recommended to setup the clock before starting to enjoy the receiver, because correct time maybe is required by some applications. Please complete following options:

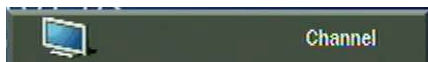
Press the [Menu] key of the remote control for appearing the main menu. Select the "System Configuration" option and confirm pressing [OK].

Once in the "System Configuration" option, please select "Region and Time" option and press [OK]. Image 3 is watched on the TV. For setting up the time, please complete:

1. Country: Confirm that the correct country has been selected during the quick installation.
2. GMT Usage: this option will allow you to select if the date and time will be introduced manually (Use GMT: Off), if you prefer that it will be automatic by country (Use GMT: By Region) or if you wish to introduce the offset respect GMT manually (Use GMT: Defined by user).
3. GMT Offset: If Use GMT defined by user has been chose, the offset respect GMT has to be configured depending on your region or country. Use the keys to choose the offset. Remember that the offset values are between -12:00 and +12:00
4. Date / Time: In order to introduce manually the time and date. Before these values can be modified, the automatic control of GMT has to be turned Off.
5. Summer Time: Selecting "On" this option, the time of the receiver will change automatically during summer time. This option can only be modified when use GMT by region is selected.
6. Time Display: Selecting "On" this option, the time will be shown in the screen.
7. Press [Exit] to exit the menu "Region and Time".



IMAGE 3



- TV Channel List: This option shows the list of TV stored channels.
- Radio Channel List: This option shows the list of Radio stored channels.
- Favourite Channel List Name: It allows changing the name of the favourite groups.
- Delete All Favourites: This option deletes all the favourite lists created.
- Delete All Channels: This option deletes all TV and Radio stored channels.



- Auto Scan: This option make a full scan of all TV and Radio channels received.
- Channel Scan: This option make a complete scan of only one Multiplex.
- Channel Setup: This option shows the information of stored channels. It is possible to change the video and audio PID.
- Aerial Adjustment: This option allows turns on or off 5V feeding throughcoaxial cable. It allows watch, by means of indicators, the level of the received signalof each channel



## Setup

- OSD Language: This option allows selecting different menu and options languages.
- TV System: This option allows choosing the video Standard and other parameters of the screen.
- Start up Service: This option allows setting the receiver to start in a predefined channel.
- Region and Time: In this option, the time of the receiver and user region or country can be configured.
- Timer Setting: Timer setting menu.
- OSD Setting: In this option, the subtitles of the channel information can be configured.
- Parental Lock: In this option, user can lock the access to the menu and change the password of the receiver.



## Tools

- Information: This option shows all the technical information for the selected channel.
- Game: In this option user can find some games like TETRIS, SNAKE ...
- Load Factory Default: If this option is selected, a reset of the receiver will be done and it will load the factory default values.
- Software Upgrade: To update the receiver with other receiver.
- WELCOME PAGE: If this option is selected, the welcome page or quick installation menu will be loaded.

## 1. Remote control & panel description

1.1.Front panel description.....	11
1.2.Rear panel description.....	11
1.3.Remote control description.....	12

## 2. Hotkey

2.1.Standby.....	12
2.2.CH+/CH-.....	12
2.3.Vol+/Vol-.....	12
2.4.Number.....	12
2.5.TV/Radio.....	13
2.6.Channel List.....	13
2.7.Audio.....	13
2.8.EPG.....	13
2.9.FAV+/-.....	13
2.10.Exit.....	13
2.11.Menu.....	13
2.12.Mute.....	13
2.13.BACK.....	14
2.14.FAV.....	14
2.15.Information.....	14
2.16.Pup+/Pdown-.....	14
2.17.TTX.....	14
2.18.Zoom.....	14
2.19.Multiwindow.....	14
2.20.SUB.....	14

## 3. Channel

3.TV Channel List.....	15
3.1.1.Favorite.....	15
3.1.2.Move.....	15
3.1.3.Find.....	16
3.1.4.Sort.....	16
3.1.5.TV Channel list edit.....	16
3.1.5.1.Delete.....	16
3.1.5.2.Skip.....	16
3.1.5.3.Lock.....	17
3.1.5.4.Edit.....	17
3.1.5.5.Delete all.....	17
3.2.Radio Channel list.....	17
3.3.Favourite Channel List Name.....	17
3.4.Delete all favorites.....	18
3.5.Delete all.....	18



## 4. Installation

4.1.Auto scan.....	19
4.2.Channel scan.....	19
4.3.Channel setup.....	20
4.4.Aerial adjustment.....	20

## 5. System setup

5.1.OSD language.....	21
5.2.TV system.....	21
5.3.Start up service.....	22
5.4.Region and time.....	22
5.5.Timer setting.....	23
5.6.OSD setting.....	24
5.7.Parental lock.....	24

## 6. Tools

6.1.Information.....	26
6.2.Game.....	26
6.3.Load factory default.....	27
6.4.Software upgrade.....	27
6.5.Welcome Page.....	28

## 7. Technical specification

7.Technical specification.....	29
--------------------------------	----



The lightning flash with arrowhead symbol, within an equilateral triangle, is intended to alert the user to "dangerous voltage" and to prevent from a risk of electric shock

Warning: To reduce the risk of electric shock, don't open the cabinet. Refer servicing to qualified personnel only.

The exclamation point within an equilateral triangle is intended to alert the user to important operating and maintenance (servicing).

**WARNING:** Do not use this STB where contact with or immersion in water is a possibility. Do not use near flower vase, washbowls, kitchen sinks, laundry tubs, swimming pools, etc.

**WARNING:** Do not put the candle or lamp stand on the cabinet; otherwise, there is the danger of fire.

**WARNING:** The unit should be connected to a power supply only of the type described in the operating instructions or as marked on the unit. If you are not sure of the type of power supply (for example, 120 or 230 V) to your home, consult your local dealer or local power company.

**WARNING:** This product install diodes. Do not open the cabinet or touch any parts in the inner mechanism. Consult your local dealer for technical service if the opening is required.

**Note:** To ensure proper use of this product, please read this User manual carefully and retain for further reference.

**Unit Cleaning:** After the unit power is turned off, you can clean the cabinet, panel and remote control with a soft cloth lightly moistened with a mild detergent solution.

**Attachments:** Never add any attachments and/or equipment without the manufacturer consent; as such additions may result in the risk of fire, electric shock, or other personal injury.

**Locating:** Slots and openings in the cabinet are provided for ventilation to protect it from overheating. Do not block these openings or allow them to be blocked by placing the STB on a bed, sofa, or other similar surface, nor should it be placed over a radiator or heat register.

**Power-Cord Protection:** Place the power-supply cord out of the way, where it will not be walked on. Please take special attentions to cords at plugs, convenience receptacles, and the point where they exit from the unit.

**Object and Liquid Entry:** Never put objects of any kind into this STB through openings, as they may touch dangerous voltage points or short-out parts that could result in a fire or electric shock. Never spill any liquid on the STB.

**Note:** Moisture may be formed on the lens In the following conditions:

- when the unit is suddenly moved from a cold environment or an air-condition room to a warm place.
- immediately after a heater has been turned on.
- in a steamy or very humid room.

If the moisture forms inside the unit, it may not operate properly. To correct this problem, turn ok the power and wait about two hours for the moisture to evaporate.

**Parts Replacement:** When the unit parts need to be replaced, user should make sure the service technician use the replacement parts specified by the manufacturer or having the same characteristics as the original part. Unauthorized replacement may put the unit In the risk of fire, electric shock or other hazards.

**Safety Check:** After all the maintenances and repairs are done, user is required to request the service technician to conduct the overall safety check to ensure the machine is in the proper condition.

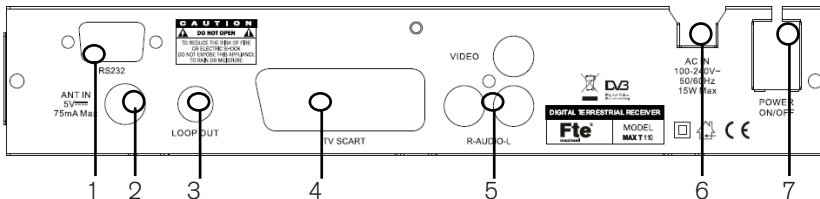
## 1. PANEL & REMOTE CONTROL DESCRIPTION

### 1.1. FRONT PANEL DESCRIPTION



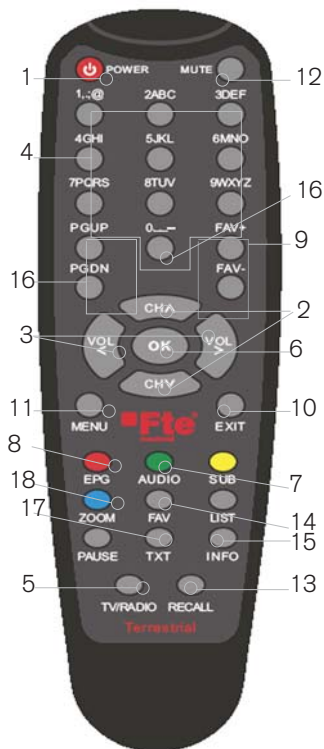
- 1.Remote Sensor: Detects the infrared signals from the remote control unit.
- 2.POWER LED: Shows the state of the receiver:
  1. LED on: The receiver is on;
  2. LED blinks slowly: The receiver is in Standby mode;
  3. LED blinks quickly: The receiver is being updated through RS232 port;
  4. LED off: The receiver is not supplied. Please, verify if the receiver is plugged or if the switch at the rear panel is on.

### 1.2. REAR PANEL DESCRIPTION



1. RS-232: Serial Port allowing software upgrades
2. ANTENNA IN: Terr. input of the digital tuner.
3. LOOP OUT: Terr. output for cascading to others devices.
4. TV SCART: Output SCART for the connection to a TV set.
5. RCA A/V.
6. AC IN: Mains input cable.
7. POWER ON/OFF: Allows to completely switching off the receiver.

## 1.3 REMOTE CONTROL DESCRIPTION



- 1- Standby
- 2- CH+/CH-
- 3- Vol+/Vol-
- 4- Number
- 5- TV/Radio
- 6- OK
- 7- Audio
- 8- EPG
- 9- FAV+/-
- 10- Exit
- 11- Menu
- 12- Mute
- 13- Recall/Back
- 14- FAV
- 15- Información
- 16- Pup / Pdw
- 17- TTX
- 18- Zoom
- 19- Multiwindow

## 2. HOTKEY

### 2.1 STANDBY

1. Press [Power] button to switch from TV mode to Standby mode
2. In Standby mode press [Power] button again to switch back to TV mode. The last active channel will be showed.
3. To switch off the STB complete press the main power button.

### 2.2 CH+/CH-

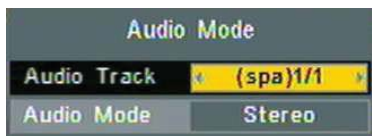
In TV mode press [Channel Up/Channel Down] to change channel.

### 2.3 VOL+/VOL-

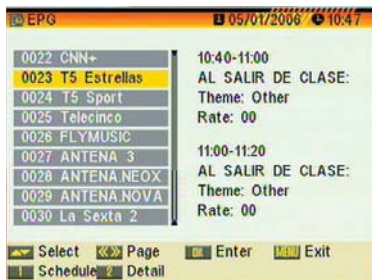
In TV mode, press [Volume Up/Volume Down] to adjust volume.

### 2.4 NUMBER

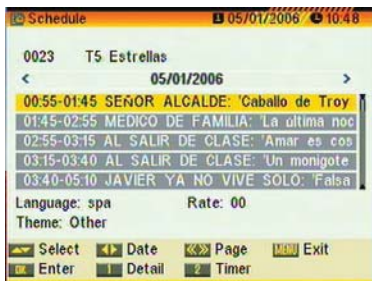
In TV mode you can enter the channel number directly with your remote control unit and confirm the number with the OK button to change to the desired channel.



OSD 1



OSD 2



OSD 3



OSD 4

## 2.5 TV/RADIO

In TV mode, press [TV/RADIO] to switch to Radio mode. In Radio mode press [TV/RADIO] again to switch back to TV mode.

## 2.6 CHANNEL LIST

1. In full screen, press [OK] / [List] key can enter "Channel List", please refer to TV Channel List for detail information.

## 2.7 AUDIO

1. In TV mode, press the [Audio] button to open the Audio Mode window. ( OSD 1)

## 2.8 EPG

1. The STB has an Electronic Program Guide (EPG) to help you navigate channels through all the possible viewing options. The EPG supplies information such as channel listings and starting and ending times for all available channels. Press [EPG] key to display EPG screen.(OSD2)
2. Press [OK] key can play the current channel in full screen.
3. Press number key [1] can display all programs schedule information of the selected channel. The window is like below (OSD 3):
4. Press number key [2] can display the current channel detail information. The window is like below (OSD4):
5. Press number key [2] in schedule and detail window can open the timer window directly. This operation can add the highlighted program to a timer quickly.

## 2.9 FAV +/-

1. In TV mode press the [FAV +/-] buttons to switch between the favorite channels in the current Favorite Group directly.
2. The sequence of the favorite channels is following the sequence in the related Favorite Group list.

## 2.10 EXIT

[Exit] key can exit current menu.

## 2.11 MENU

[Menu] key can enter the menu or exit current menu.

## 2.12 MUTE

1. Press the [Mute] button to mute the sound. On the screen an icon will be displayed to indicate the muted sound.
2. Press the [Mute] button again to restore the



OSD 5



## 2.13 BACK

Pressing the [Recall] button allows you to toggle between the actual and the last selected channel.

## 2.14 FAV

1. In TV mode press the [Favorite] button to display the Favorite Group window on the screen as the picture beside shows (OSD 5).
2. In the Favorite Group window you can select the desired favorite channel with [Channel Up / Down] and confirm it with [OK] to switch to it. In bigger groups you can navigate with [Page Up/Page Down].
3. With [Volume Up / Down] you can select different Favorite Groups.
4. Press [Exit] to close the Favorite Group window.

## 2.15 INFORMATION

In TV mode, press [INFO] button can open information screen, in the window shows the parameters of current channel.

## 2.16 PUP+/PDOWN-

In full screen, press [PUP+/PDOWN-] key can switch group directly.

## 2.17 TTX

1. Press [TXT] button in TV mode to open the teletext page. This service is depending on the support of the channel provider.
2. If the channel does not support teletext information, it will show "No Teletext Data" on the screen.

## 2.18 ZOOM

1. Press [Zoom] button in TV mode to zoom the image. Image can be augmented x16 times.
2. Press [Exit] to exit this function.

## 2.19 MULTI-WINDOW

The screen will display 9 channels preview window (static) from the current channel. And only the highlight preview program can play normally.

## 2.20. SUBTITLES

In TV mode, press [Sub] button for activating / deactivating the channel subtitles, depending on the provider information.

## 3.CHANNEL



OSD 6



OSD 7



OSD 8



OSD 9



OSD 10

Press [Menu] in the TV mode to enter the main menu (OSD 6).

1. Press [ ] to select the Channel item.

2. Press [OK] to enter the selected item.

In the Channel menu (OSD 7):

3. Press [ ] to select the wanted menu item.

4. Press [OK] to enter the selected item among.

- TV Channel List
- Radio Channel List
- Favourite channel list name
- Delete All Favourites
- Delete All channels

### 3.1 TV CHANNEL LIST

When you enter to "Channel List" menu, there will display the screen like below (OSD 8).

1.You can move highlight by press [ ] key and press [OK] key to preview the current highlighted program in the right side preview window.

2.You can press [Page Up/Page Down] key to implement the Page Up/Page Down function.

3.You can use [] key to switch "Group".

4.You can press [Menu] or [Exit] keys to enter full screen playing mode.

5.Press the number key [1] ~ [5] can implement the corresponding function in "Channel List".

#### 3.1.1 FAVORITE

1. Press number key [1] can open the "Favorite" window like above (OSD 9)

2.You can move highlight between 8 favorite groups by press [ ] key and press [OK] key to make a favorite mark in the right side of the selected Favorite group.

3. Press [OK] key on the marked Favorite group can cancel the exist favorite mark.

4. After marking, press [Exit] key can back to "TV Channel List", there will show a favorite mark beside the marked channel.

#### 3.1.2 MOVE

1. Press number key[2], there will show a "moving mark" in the right side of the selected channel like above (OSD10)

2. You can move the selected channel to the position that you want to place by press [ ] key. And press [OK] key to confirm your decision.

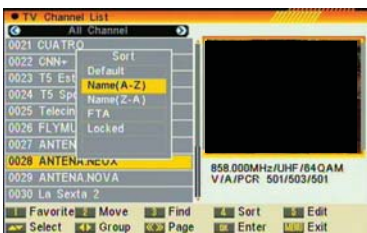




OSD 11

## 3.1.3 FIND

1. Press number key [3] can open the "Find" window like above (OSD 11). You can press number [0] key to [9] key to input letter or number into the dialogue. Every time you press number key it will change the letter or number. For example, every time you press number [2], it will show "a->"b"->"c"->"2"->"a"->...
2. After input each character, the program list on the left will search the channel according your input, and list the matched channel.
3. Press [Exit] key can close "Find" window and you can select channel from the channels list directly.



OSD 12

## 3.1.4 SORT

1. Press number key [4] can open the "Sort" window like above (OSD 12). There are five kinds of sorting ways. You can press [Left/Right] key to move highlight and press [OK] key to confirm you selection
2. The five kinds of sorting way are:
  - Default: Sorting by scanning result.
  - Name (A-Z): Sorting in Alphabetical Order, ignore symbol.
  - Name (Z-A): Sorting in Alphabetical Order, ignore symbol.
  - FTA: Sieved out all free fare channels.
  - Lock: Accumulated all locked channels and list in the last of TV Channel List



OSD 13

## 3.1.5 TV CHANNEL LIST EDIT

1. Press number key [5] will open a message box for you to enter password, and the default password is "0000"
2. There are five items of "TV Channel List Edits": Delete, Skip, Lock, Edit, and Delete all. (OSD 13)
3. Press [Exit] can exit "TV Channel List Edit" menu. The system will show up a message box to inquire you whethersaving or not.

### 3.1.5.1 DELETE

In "TV Channel List Edit" menu, press number key [1] can make a delete mark in the right side of the highlighted channel. A

fter save and exit "TV Channel List Edit" menu, the marked channel will be deleted. (OSD 14)



OSD 14

### 3.1.5.2 SKIP

In "TV Channel List Edit" menu, press number key [2] can make a "skip mark" in the right side of the highlighted channel. After save and exit "TV Channel List Edit" menu, the channel will be skip while user change channel in the full rev





OSD 15



OSD 16



OSD 17



OSD 18



OSD 19

screen. (OSD 15).

## 3.1.5.3 LOCK

In "TV Channel List Edit" menu, press number key [3] can make a "lock mark" in the right side of the highlighted channel. After save and exit "TV Channel List Edit" menu, STB will request you to input the password while you want to watch the locked channel. (OSD 16)

## 3.1.5.4 EDIT

In "TV Channel List Edit" menu, press number key [4] can enter edit box like below (OSD 17):

1. On the "Name" item, press [OK] key can display keypad to edit the name of selected channel.
2. "Video PID", "Audio PID" and "PCR PID" items are grey and can not be edited.
3. After modification, move highlight to "Save" item and press [OK] key can save the modified value and exit "Edit" mode. Otherwise, move highlight to [Exit] item and press [OK] key can exit "Edit" mode and won't save any modification.

## 3.1.5.5 DELETE ALL

1. In "TV Channel List Edit" menu, press number key [5] can mark all the channel with delete mark (OSD 18).
2. Press number key [5] again can cancel all the delete mark.

## 3.2 RADIO CHANNEL LIST

Basically, the operation of "Radio Channel List" is same as "TV Channel List", but there is one point different: In "Radio Channel List" mode, there is no video information, so it will always display Radio's logo in the right side preview window. (OSD 19)

## 3.3. FAVOURITE CHANNEL LIST NAME

In this menu, user is able to change the name of the Favourite Groups. Press [OK] to enter this menu and you will see a screen like beside (OSD 19B).

To change the name of the Favourites Groups:

1. Press [Left] and select a Favorite Group.
2. Press [Ok] button to edit the name of the Group.
3. Once the name is correct, select "Ok" option and confirm pressing [OK].
4. If the name is used by other group, an alert message will appear on the TV.
5. Select "Exit" and press [OK] to leave this menu.



OSD 19B

### 3.4. DELETE ALL FAVORITES

In "Delete All" item (OSD 20):

1. There will display an dialogue for user to key in password.  
The default Password is "0000".
2. When you input the correct password, there will show up a warning message box to inquire you whether delete all or not.
3. If you select "Yes", all favorite channels will be deleted.
4. In step 1 and step 2, press [Exit] key can exit the function directly without save

### 3.5.DELETE ALL

In "Delete All" item (OSD 21):

1. There will display an dialogue for user to key in password.  
The default Password is "0000".
2. When you input the correct password, there will show up a warning message box to inquire you whether delete all or not.
3. If you select "Yes", all channels will be deleted.
4. In step 1 and step 2, press [Exit] key can exit the function directly without save.



OSD 20



OSD 21

## 4.INSTALLATION



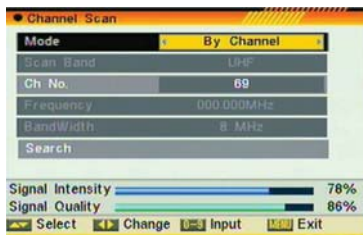
OSD 22



OSD 23



OSD 24



OSD 25

Press [Menu] in the TV mode to enter the main menu (OSD 22).

1. Press [Left/Right] to select the Installation item.
  2. Press [OK] to enter the selected item.
- In the Installation menu (OSD 23):
3. Press [Left/Right] to select the wanted menu item.
  4. Press [OK] to enter the selected item among.
    - Auto Scan
    - Channel Scan
    - Channel Setup
    - Aerial Adjustment

### 4.1.AUTO SCAN

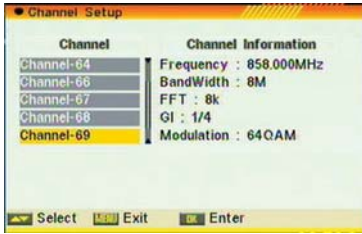
When you enter to "Auto Scan" menu, there will display the screen like below (OSD 24):

1. Firstly please select the country in System Setup Menu / Region and Time / Region
2. In "Scan Mode" item, press [Left/Right] key to select scans all channels or just scans free channels.
3. Moving the highlight to "Search" item and press [OK] key to start scanning.
4. In the "Auto Scan" menu, press [Exit] key to draw back from the scanning.

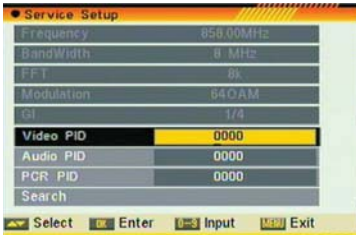
### 4.2 CHANNEL SCAN

When you enter to "Channel Scan" menu, there will display the screen like below (OSD 25):

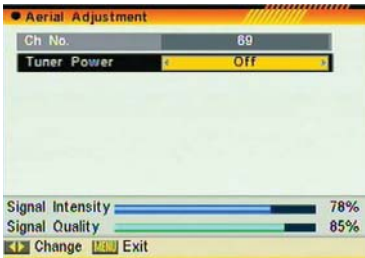
1. There is two mode. You can scan channel by channel or by frequency .
2. When scan band is UHF, the range of Ch No. is from 21 to 69.
3. When you complete your modification,move highlight to "Search" item and press [OK] key, then it will begin to scan.
4. In the "Channel Scan" item, press [Exit] key to exit the scanning and save the current parameters.



OSD 26



OSD 27



OSD 28

## 4.3 CHANNEL SETUP

When you enter to "Channel Setup" menu, there will display the screen like below:

1. You can see the channel information like the picture displaying (OSD 26).
2. Move the [Left/Right] key can move the highlight to select the channel.
3. When press [OK] key again, you can see the window like below (OSD 27):
4. Input PID information, then move highlight to "Search" item and press [OK] key, then it will begin to scan.

## 4.4 AERIAL ADJUSTMENT

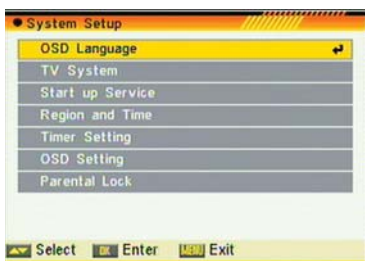
When you enter to "Aerial Adjustment" menu, there will display the screen like below (OSD 28): In Aerial Adjustment mode:

1. Ch No.: Press [Left/Right] to select the Ch No. The range is from 21 to 69.
2. Tuner Power: On / Off

## 5. SYSTEM SETUP



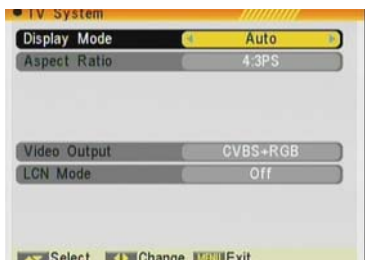
OSD 29



OSD 30



OSD 31



OSD 32

Press [Menu] in the TV mode to enter the main menu (OSD 29).

1. Press [Left/Right] to select the System Setup item.
2. Press [OK] to enter the selected item.

In the System Setup menu (OSD 30):

3. Press [Left/Right] to select the wanted menu item.
4. Press [OK] to enter the selected item among.
  - OSD Language
  - TV System
  - Start up Service
  - Region and Time
  - Timer Setting
  - OSD setting
  - Parental Lock

### 5.1 OSD LANGUAGE

When you enter to "Language" menu, you will see the screen like below (OSD 31):

1. Language: press [Left/Right] key to select languages, the selections of languages include: English, French, German, Italian, Portuguese, Spanish and Turkish.
2. First Audio: Some channels have more than one audio language for choosing; by this function you can set the first audio for this channel. If the playing channel has the same audio as the "First Audio" you set, system will play this audio language as default. If the channel hasn't the suited audio language, then the system will compare automatically with second audio language. The selections of audio languages include: English, French, German, Russian, Arabic, Portuguese, Turkish, Spanish, Polish and Italian.
3. Second Audio: If the channel has no corresponded audio with "First Audio" but have corresponded audio with "Second Audio", system will play the second audio language as default. If no audio language corresponds with the "Second Audio", then the default language of current channel will be played automatically. The selections of audio languages include: English, French, German, Russian, Arabic, Portuguese, Turkish, Spanish, Polish and Italian.
4. Press [Exit] key to draw back from "Language" me

### 5.2 TV SYSTEM

When you enter to "TV System" menu, you will see the screen like below (OSD 32):

1. Display Mode is use for switching the screen-displaying mode. Now we provide below options: Auto / PAL-M /

PAL-BG / NTSC/ PAL-N. You can press [↺] key to select each mode circularly.

2. Aspect Mode is used for switching the screen aspect ratio mode. Now we provide below options: 4:3 PS / 4:3 LB / 16:9. You can press [↺] key to select each mode circularly.
3. Video Output is use for switching the video output mode. Now we provide below options: CVBS, CVBS+RGB. You can press [↺] key to select each mode circularly.
4. LCN Mode can control the channel whether sort by the information in the streams. The options is: On / Off. You [Left/Right] key to select each mode circularly.
5. Press [Exit] key to draw back from "TV System" menu.



OSD 33

## 5.3 START UP SERVICE

1. Startup Channel: Press [OK] key to enter "Startup up Service" menu, and you will see the screen like below (OSD33):
  - If the setting of "Boot on Channel" is "On", it means the following two items can be work. If the setting is "Off", it means the "Boot on Channel" function can't work.
  - In the "Mode" item, you can set the "Startup Channel" as "TV" mode or "Radio" mode.
  - In "Startup Channel" menu, you can press [OK] key to open the channel list, and select the channel that you want it to startup, press [OK] key again to confirm.
2. Press [Exit] to draw back from "Channel Setup" menu.

## 5.4 REGION AND TIME

When you enter to "Region & Time" menu, you will see window like below (OSD 34):



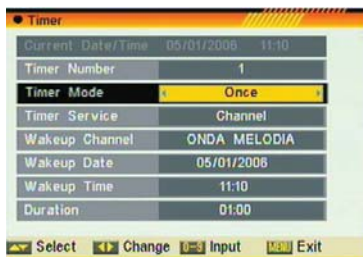
OSD 34

- Region is used for selecting the country which you are in. You can press [↺] key to select each mode circularly.
- GMT Usage: This item is use for open the usage of GMT. You can press [↺] keys to switch "Off / User Define / By Region".
- The "GMT Offset" item is valid only when the setting of "GMT Usage" is "Uesr Define". You can press [↺] keys to switch "GMT Offset" value, and the range is "-12:00 ~ +12:00", increase each half hour progressively.
- "Date" and "Time" items are valid only when the setting of "GMT Usage" is "Off". You can press [↺] keys to moving highlight and use number keys to input directly.
- "Summer Time" items are valid only when the setting of "GMT Usage" is "By Region". You can press [↺] keys to switch.
- Time display function can control whether the time will be displayed on screen or not.
- Press [Exit]





OSD 35



OSD 36



OSD 37



OSD 38

## 5.5 TIMER SETTING

When you enter "Timer Setting", you will see the window like below(OSD 35):

1. Program Timer: Select "Program Timer" item and pres [OK] key to enter "Program Timer" menu.

- Current time information will display on the first column; if the current time is incorrect, please modify the time information in "Time" item.

- Timer Number: You can press [0-9] keys to set Timer number, and there are 8 timers in total.

- Timer Mode: There are several modes for Timer to setting, include Off, Once, Daily, Weekly, Monthly and Yearly.

- Timer Service: There are two options for "Timer Service", include Channel (timer setting for channel change and wakeup/Sleep) and Message (reminding message).

- When you select "Channel" (timer setting for channel change and Wakeup/Sleep) option in "Timer Service", the screen will display like below:

- Wakeup Channel: press [OK] key to enter channel list and select channel that you want to setting.

- Wakeup Date: use number keys to input your wakeup date.

- Wakeup Time: use number keys to input your wakeup time. Once the time's up, no matter what the system is in standby mode or in playing mode, the system will automatically switch to the channel you want and start to play.

- Duration: After you set a time for "Duration" item, once the time's up, the system will automatically switch to standby mode.

- When you select "Message" (reminding message) option in "Timer Service", the screen will display like below:

- Wakeup Message: press [0-9] key to select reminding message as Birthday, Anniversary and General.

- Wakeup Date, you can use number key to input your wakeup date.

- Wakeup Time: use number keys to input your wakeup time. Once the time's up, no matter what the system is in standby mode or in playing mode, the system will automatically pop a reminding message.

- The message will always display on the screen, you can press [Exit] key to close it.

- Press [Exit] key to draw back from "Program Timer" menu.

2.Sleep Timer When you enter "Sleep Timer", you will see the window like below (OSD 38):

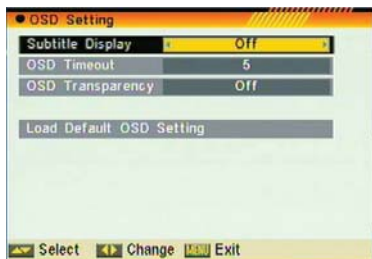
- \*Press [0-9] key to switch the Sleep Time parameter. The option is like below: Off /10min /30min /60min /90min /120min

- \*Sleep Timer can set the system enter standby mode automatically after the user setting time.

- \*Press [Exit] can exit the current menu.

3. Load Default Timer Setting When you enter "Load Default Timer Setting", you will see the window like below:

- Press [OK] key on "Load Default Timer Setting", it will show "Input Password" dialogue.
- After you input the correct password, there will show a warning message to inquiry you "All Timers will be cleared, continue?"
- If you select "Yes", it will clear all the timer.
- You can press [Exit] key to exit.



OSD 39

## 5.6 OSD SETTING

When you input to "OSD Setting" menu, you will see a screen like below (OSD 39):

1. Subtitle Display: You can press [On/Off] key to select "On" or "Off". If the current channel has subtitle information, it will be showed up while this function is "On". If this function is "Off", there won't show up subtitle information even if the current channel has subtitle information.
2. OSD Timeout: When you switch channels in full screen, there will show up some information about current channel on the lower of the screen. And regarding to the duration of these information show up on the screen, you can press [Left/Right] key to set the time. The range of the duration is "1 second ~ 10seconds".
3. OSD Transparency: Besides the setting of "OSD Menu Style", you also can set the transparency of OSD. You can press [Left/Right] key to select the values. There are 5 levels of transparency, 10%, 20%, 30%, and 40% and "NO" (means no transparency function).
4. Load OSD Setting Default: If you are not satisfy with your setting, you can move highlight to this item and press [OK] key to reset parameters as default value.

## 5.7 PARENTAL LOCK

You can set a password for anyone who wishes to operate in the "Installation" menu. And you can also set the password for the lock channels. (How to set the lock channel please refer to LOCK) Here will show you how to setting and how to revising the password.



OSD 40

1. In "Parental Lock" function, press [OK] key, there will pop an dialogue for you to input the password. The default password is "0000". When you input the correct password, you will see a screen like below(OSD 40):
2. Menu Lock determining that when user wish to enter "Installation" menu, whether have to input Password or not. If the setting of "Menu Lock" is "Yes" which means user have to key in password, set "No" means unlock.
3. Channel Lock determining that when user wish to play



the lock channels, whether have to input the password or not. If the setting is "Yes", play the channels with lock mark will show up a dialogue on the screen and ask for the password. If the setting of "Channel Lock "is "No", the Lock function will invalid.

4. New Password is used for revising password; you can input the new password in this item by using number keys directly. After you filled in 4 digital numbers, the highlight will auto skip to Confirm Password and ask you to input the new password again. If the password is correct, the screen will show up a message of "Change password successfully". After finish saving and draw back to "System Setup" menu, the revising is complete.
5. Press [Exit] key to draw back from the "Parental Lock" menu.

## 6.TOOLS



OSD 41

Press [Menu] in the TV mode to enter the main menu (OSD 41).

1. Press [Left/Right] to select the Tools item.
  2. Press [OK] to enter the selected item.
- In the Tools menu (OSD 42):
3. Press [Left/Right] to select the wanted menu item.
  4. Press [OK] to enter the selected item among.

- Information
- Game
- Load Factory Default
- Software Upgrade
- Welcome Page

### 6.1 INFORMATION

1. When you enter to "Information" menu, you will see a screen like above (OSD 43). The screen displays some parameters of information of current channel, and this function same as the function [Information] in the full screen play mode.
2. Press [Exit] key to draw back from "Tools" menu.

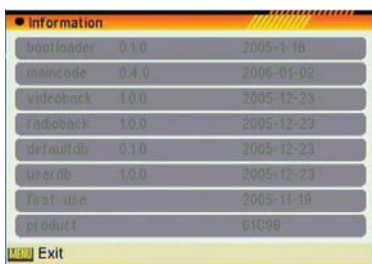


OSD 42





### 6.2 GAME

When you enter "Game" menu, you will see three Games include Tetris, Snake and Othello. Basic operation statement:

1. Tetris
  - Moving highlight to "Setup" and press [Left/Right] key to select the game level (speed).
  - Moving highlight to "Start" and press [OK] key to start the game.
  - Moving highlight to [Cancel] keys and press [OK] key to draw back from the game.
  - Start on the game:
    - [Left/Right] — Move shape left or right
    - [Up] — Rotate clockwise
    - [Down] — Faster drop
    - [OK] — Pause/Play the game
    - [Exit] — Quit game and draw back to "Game" menu.
2. Snake
  - Moving highlight to "Setup" and press [Left/Right] key to select the game level (speed).
  - Moving highlight to "Start" and press [OK] key to start the game.
  - Moving highlight to [Cancel] keys and press [OK] key to draw back from the game.
  - Start on the game:



OSD 43


- [  /  /  ] — use these arrow keys to guide the snake.
  - [OK] — Pause/Play game
  - [Exit] — Quit game and draw back to “Game” menu.
3. Othello
- Moving highlight to “Setup” and press [Left/Right] keys to select the game level (degree of difficulty).
  - Moving highlight to “Start” and press [OK] key to start the game.
  - Moving highlight to [Cancel] keys and press [OK] key to draw back from the game.
  - Start on the game:
  - [  /----- use these arrow keys to guide chessman.
  - [OK] — set chessman.
  - [Exit] — Quit game and draw back to “Game” menu.

### 6.3 LOAD FACTORY DEFAULT

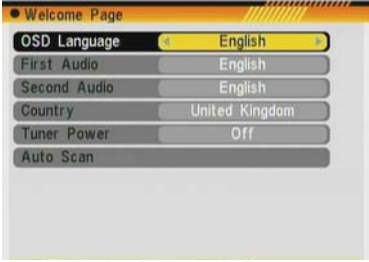
When you press [OK] key In the “Load Factory Default” item:

1. There will pop a dialogue for you to enter the password, and the default password is “0000”.
2. After you input the correct password, there will show a warning message to inquiry you “The operation will load default and erase all the channels that user added, continue?”.
3. If you select “Yes” option, the all revised parameters of the receiver will reset to default value. Please carefully to using this function.
4. In step 1 and step 2, press [Exit] key can draw back from this item and without saving.

### 6.4 SOFTWARE UPGRADE

1. We offer the functions for user to connecting receiver (Master) to the other receiver (Slave) via serial interface to upgrade software code and program list.
2. Connect master receiver to slave receiver via serial interface. Enter “Software Upgrade” menu in master receiver and press [  ] keys to switch upgrade mode. Upgrade modes include: allcode / maincode / videoback / radioback / defaultdb1 / userdb
3. Turn on slave receiver and it needn't operate any setting.
4. Moving highlight to “Start” on master receiver and press [OK] key to start upgrade.
5. Press [Exit] key to save the parameters and draw back.

For more information about software upgrade, please visit <http://www.ftemaximal.com>.



OSD 42

## 6.5. WELCOME PAGE

The receiver includes an installation assistant that will help you to setup the different parameters as you can see at OSD 44.

1. Language: press [↔] to select the language that will appear on the menus (see point 5.1.)
2. First Audio: Some channels offer more than one audio language. This function allows you to set the preferred audio language for those channels using [↔]. (See point 5.1.)
3. Second Audio: Some channels offer more than one audio language. This function allows you to set the second audio language for those channels using [↔]. (See point 5.1.)
3. Country: select your country using keys.
4. Tuner Power: this receiver has the possibility of feeding a 5V indoor antenna directly through the coaxial cable. If you have not an indoor antenna and the receiver is connected to a MATV antenna, you should turn off this option using keys until [Off] option appears on the TV.
5. Auto Scan: before making an auto scan be sure that the data of the Country option (Image 1) is correct, in other case the search of channels will be made wrongly. Once the Country option is confirmed, please select the option "Auto Scan" and press [OK].

<b>Video</b>	
Decoding	Compatible MPEG-2 & MPEG-1
Bit rate	Max 15Mbps
Output	PAL/NTSC
Aspect ratio	4:3, 16:9, Auto
Active pixel	720x480 @ 30fps; 720x576 @25fps
Output connector	Scart / RCA
<b>Audio</b>	
Decoding	MPEG-2/MPEG -1 Layer I & II
Sampling rate	32 /44,1/ 48 KHz
Output connector	Scart / RCA
<b>Input Signal</b>	
Demodulation	COFDM 2k, 8k
Guard	1/4, 1/8 , 1/16, 1/32
<b>SIGNAL</b>	
Frequency	VHF-UHF
Input Level	32 - 90 dBuV
<b>Miscellaneous</b>	
Supply voltage	100~240VAC 50~60 Hz
Power consumption	Typ. 21 watts / Max. 30 watts
Operation temperature	+5° to +40°
Storage temperature	-20° to +70°
Dimension (W x D x H)	240 x 50 x 190 mm
Weight	1.2 Kg



"WE , FTE MAXIMAL, DECLARE THAT THE PRODUCTS

MAX T110

IS IN CONFORMITY WITH FOLLOWING DIRECTIVES

LOW VOLTAGE DIRECTIVE 2006/95/EC

EMC DIRECTIVE 2004/108/EC"