
USER MANUAL

**MODEL NUMBER:
BLX-100W**

Single Manual Boot Scrubber Wet

English (Original Instructions)



READ ALL INSTRUCTIONS BEFORE OPERATING EQUIPMENT



CAUTION

Avoid Personal Injury



1. Avoid contact of cleaning agent with skin and eyes. If contact occurs, see MSDS sheet for further first aid measures.



2. Follow safety instructions of chemical manufacturer (MSDS).



3. Always follow plant and OSHA guidelines about the use of hygiene equipment.
4. All personnel using this unit must be familiar with the information contained in this manual. Follow all installation and maintenance instructions.
5. *Always wear appropriate footwear. Secure or remove loose items on footwear.*
6. Ensure solid footing and use both hands when operating the unit.

Specifications:

Frame.....304 solid stainless steel construction

Length.....28"

Width.....15"

Height.....44"

Requirements:

Electrical:

None

Water Connection:

Cold Potable Water

15 PSI Minimum Pressure

50 PSI Maximum Pressure

100° Maximum Temperature

Attention: A backflow preventer must be installed in the water line to this unit. Check local codes to ensure proper installation.



READ ALL INSTRUCTIONS BEFORE OPERATING EQUIPMENT

General Overview

Installation Instructions:

1. Set unit in desired location.
2. Aspects to consider when deciding on placement:
 - Room for entering and exiting.
 - Traffic flow for unit operation.
 - Emergency exit paths or egress in case of emergency.
 - Head room for personnel while using the unit.
 - Connections for water.
3. Once the unit is in the desired location, use a level to make sure the unit is stable and level in all directions. Make sure the location is a flat surface. (Figure 1).

4. **Securely fasten unit to the floor with concrete anchors and bolts through the 4 mounting brackets (Circled in red in Figure 1 & 2).**



WARNING - IF UNIT IS NOT SECURELY MOUNTED TO FLOOR, UNIT CAN TIP OVER AND CAUSE PERSONAL INJURY.

5. Dosing of sanitizing chemicals into water supply can be accomplished via a venturi injector, chemical dosing pump or similar. The unit is compatible with most common sanitizers. For further plumbing recommendations please contact Clean Logix.

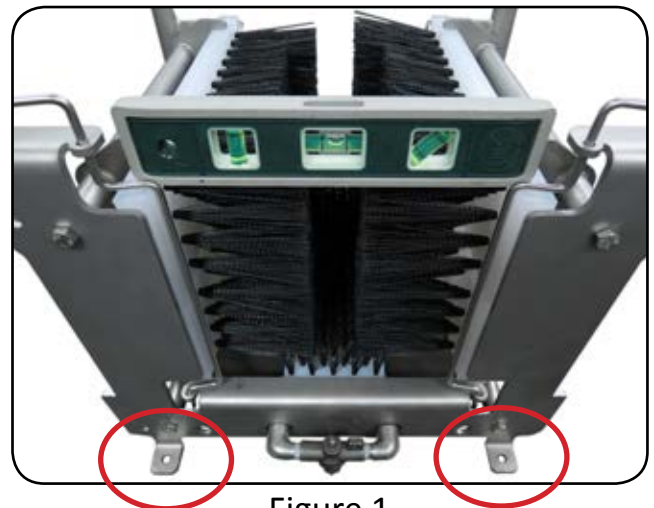


Figure 1

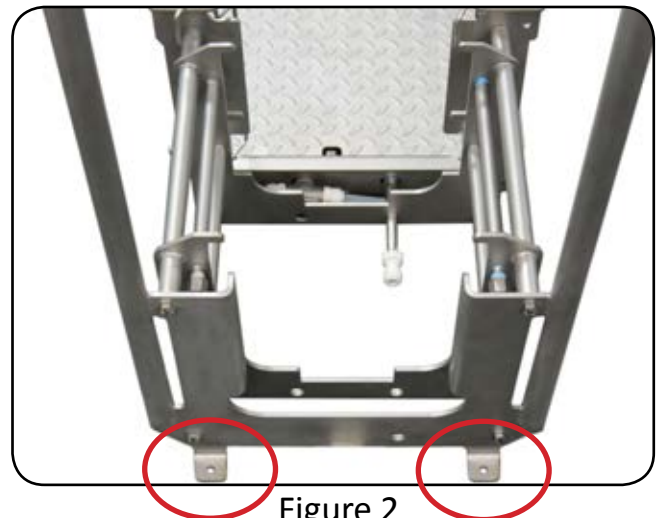


Figure 2

READ ALL INSTRUCTIONS BEFORE OPERATING EQUIPMENT

General Overview

Footplate Installation Instructions:

1. Align Footplate on the front of the unit.
2. Make sure the notches on the plate line up with the tabs on the unit.
3. Figure 5 shows proper footplate placement.

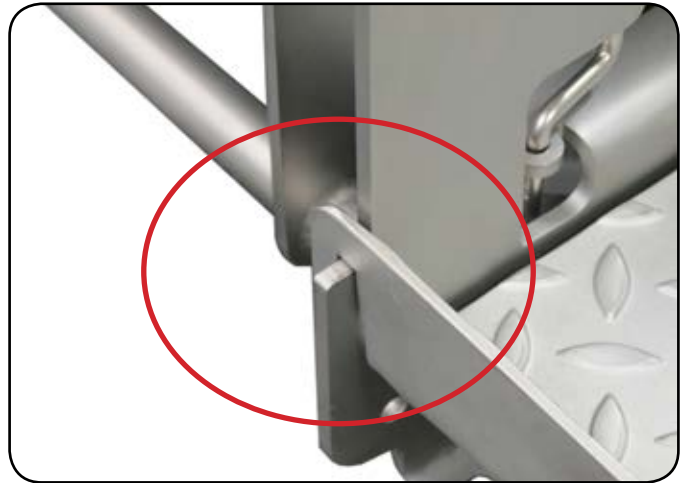


Figure 5

Brush Removal Instructions:

1. The brushes are held in place by the brush clip at the front of the unit (Figure 6).
2. To remove the brushes, pull up on the clip and rotate towards the rear of the unit
3. Once unlocked, the brushes can be removed for cleaning (Figure 7).



Figure 6



Figure 7

READ ALL INSTRUCTIONS BEFORE OPERATING EQUIPMENT

Operation Instructions:

Start Up:


After completed installation of the unit:


1. Ensure the brushes and footplate are properly secured in their correct positions.
2. Turn ON water supply to unit.
3. Before placing footwear into the unit, test that the unit is working properly by stepping on the footplate and making sure water/sanitizer sprays from spray bars.
4. The unit is now ready for use.


Operation:


Before beginning unit operation, ensure solid footing and use both hands when operating the unit.

1. To begin unit operation, step onto the footplate. The plate will push down on the valve, which will turn on the spray bars for as long as it is held down.
2. Place one boot in the unit at a time. Slide boot back and forth multiple times so every part of the boot contacts with the brushes.
3. Once the first boot is clean, repeat process with the second boot.
4. If boots are extremely dirty, it may be necessary to perform multiple cleanings.

 **WARNING:** Always wear appropriate footwear. Secure or remove loose items on footwear to prevent entanglement.

 **WARNING:** All personnel using this unit must be familiar with the information contained in the user manual. Follow all installation and maintenance instructions.

 **WARNING:** Use only for intended use as described in this manual.

 **WARNING:** Always follow safety precautions and obey warning labels. Failure to do so could result in injury or death.

Shut Down for Cleaning/Washdown:

1. Shut off water line to unit and depressurize line.
2. The unit is ready to be cleaned.

Cleaning/Washdown:

1. Remove the footplate from the unit.
2. Unlock the brushes from the frame and lift them out.
3. The brushes and footplate can be washed individually in a COP tank or wash machine, and the frame can be washed by conventional means.

BLX General Maintenance Instructions

The below maintenance procedures are recommended for normal use. Units which see a high amount of daily use should be inspected more frequently as necessary.

Weekly:

- Check unit for proper valve function.
- Inspect brushes for damage or wear. Check for missing or deformed bristles.
- Inspect plumbing for damage.
- Ensure solid mounting to floor.

Monthly:

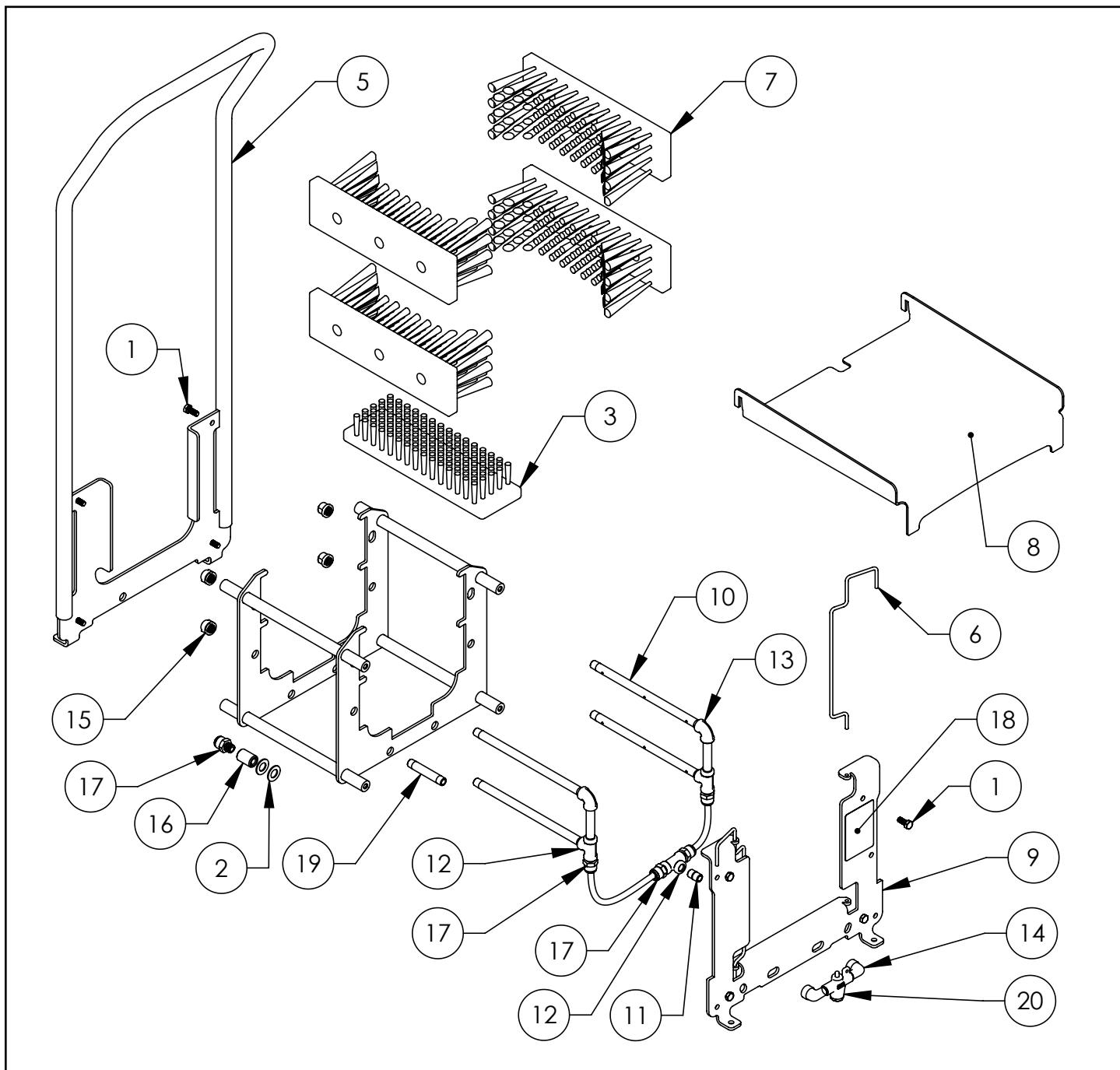
- Check all fasteners to ensure they are tight.
- Ensure warning labels and decals are present and in good condition.
- Inspect valve for damage.

Quarterly:

- Inspect structure for cracked welds or bent components.

READ ALL INSTRUCTIONS BEFORE OPERATING EQUIPMENT

Model: BLX-100W | Exploded View



READ ALL INSTRUCTIONS BEFORE OPERATING EQUIPMENT

Model: BLX-100W | Parts Callout

NO.	PART NUMBER	DESCRIPTION	QTY.
1	F1036	BOLT HHC 5/16-18 X 3/4 SS	8
2	F1151	WASHER 37/64 X 1-1/16 X 1/16 SS	2
3	M1262	BRUSH FIXED 10-1/2 X 3	1
4	M1388	BRUSH BOX WLDMNT	1
5	M1391	HANDLE WLDMNT BLX-100	1
6	M1392	BRUSH CLIP	2
7	M1393	FIXED SIDE BRUSH	4
8	M1394	FOOT PLATE BLX-100	1
9	M1396	FRONT PLATE BLX MANUAL	1
10	M1399	SPRAY BAR BLX MANUAL	4
11	P1102	PIPE NIPPLE 1/4 CLOSE SS	1
12	P1103	PIPE TEE 1/4 SS	3
13	P1104	PIPE ELBOW 1/4 X 90 SS	2
14	P1107	PIPE ELBOW STREET 1/4" SS	2
15	P1108	PIPE CAP 1/4" SS	4
16	P1196	PIPE COUPLER 1/4"	1
17	P1211	QUICK FIT 1/4 NPT X 3/8 TUBE	5
18	P1248	LABEL SLIP HAZARD	1
19	P1302	PIPE NIPPLE 1/4 X 3 SS	3
20	P1355	VALVE PUSHBUTTON SS	1

READ ALL INSTRUCTIONS BEFORE OPERATING EQUIPMENT

Model: BLX-100W | Dimensions Diagram

