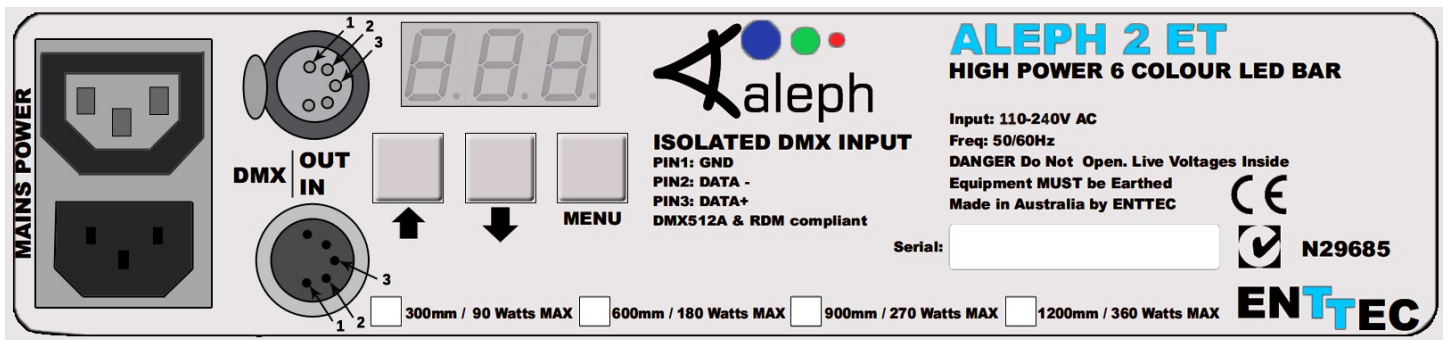



ALEPH 2 ET

6 COLOUR LED LIGHT BAR FOR ENTERTAINMENT
300mm/600mm/900mm/1200mm



Back Panel



 Please make sure the Power pass-through current does not exceed 10 Amps

Features

- Strong aluminium chassis with small profile
- DMX512 Controllable and RDM Configurable
- Can use up to 12 DMX channels, depending on configuration
- 7 different simple colour stand-alone modes
- 16-bit or Smart 8-bit LED dimming
- Strobe Mode with controllable frequency from DMX
- Advanced heat management
- Easy addressing and configuration interface
- 180° Adjustable mounting bracket

Cleaning

It is important to clean the ALEPH2 ET to maintain a long service life. Make sure the unit is unplugged before you attempt any cleaning.

- Surface dust should be removed with an air compressor, please make sure you do not blow compressed air directly onto the fan or inside the unit.
- Optics can be cleaned with a glass cleaner or IPA with a soft cloth
- Make sure the unit is dry and there is no cleaning fluid residue before powering the unit after cleaning.

Safety

- Do not expose this the ALEPH2 ET to rain or moisture, doing this will void your warranty.
- Do not spill water or other liquids into or onto your unit.
- Do not look directly into the LEDs, doing so may damage your eyes
- Check that the local power outlet matches that of the required voltage (120 → 240V AC)
- Make all the connections before you plug in the main power.
- Do not remove the cover under any condition. There are no user serviceable parts inside.
- Never operate this unit when it's cover is removed.
- Never plug this unit in to a dimmer pack
- Always be sure to mount this unit in an area that will allow proper ventilation. Allow about 6" (20 cm) between this device and a wall.
- Make sure ventilation holes are clean and unobstructed
- Do not attempt to operate this unit, if it becomes damaged.
- This unit is intended for indoor use only, use of this product outdoors voids all warranties.
- Always mount this unit in safe and stable matter.
- Power-supply cords should be routed so that they are not likely to be walked on or pinched by items placed upon or against them, paying particular attention to the point they exit from the unit and the hanger.
- The appliance should be situated away from heat sources.

Main Menu

Press MENU key to enable the display

Press UP or DOWN Key to scroll through the top menu

ADR → TST → PER → DEG
|-----←-----|

Display	Function
ADR	DMX Address
TST	Self Test
PER	Personality
DEG	Temperature

Press the MENU key to get in the desired mode.

The display will turn off when the buttons have not been operated within a 15 seconds time-out whilst in one of the top level menus: "ADR", "TST", "PER" or "DEG".

Please press the MENU key to turn the display on.

"ADR" Menu

To see the current DMX start address press the MENU key when displaying "ADR", by default the light will show "001". To change the start address press MENU again; the cursor indicated by the "." (dot) will appear on the digit to be changed using the UP or DOWN keys. To move the cursor to the new position press MENU again. Once you have selected the last digit the menu will prompt you to save the new address "YES" Press MENU again to save or scroll "UP" or "DOWN" to display "NO" and press MENU to cancel.

"TST" Self Testing Menu

CH1 → CH2... CH6 → ALL → FAN
|-----←-----|

Display	Function
CH1 - CH6	Test channels 1 to 6
ALL	Test all 6 Channels
FAN	Test Fan

To use the testing functions press the MENU key when displaying "TST" and scroll through the test menu using the UP or DOWN keys. The LEDs and fan will turn on as you scroll. Press the MENU key to go back to the top menu

To use the 7 different colour stand-alone modes, simply set the desired colour ether channels 1 to 6 or all the channels, then press the MENU key to exit.

“PER” Personality Menu

To see the current personality press the MENU key when displaying “PER”, by default the light will show “001”.

To change the personality press MENU again; the cursor indicated by the “.” (dot) will appear on the last digit where you can select out of the three available personalities using the UP or DOWN keys. Press the MENU key and the menu will prompt you to save the new address “YES” Press MENU again to save or scroll “UP” or “DOWN” to display “NO” and press MENU to cancel.

Display	Function
001	8bit 6Channel mode
002	16bit 12channel mode
003	Extended 9channel mode

Please refer to Operation Modes section to see a detailed description of each personality.

“DEG” Temperature Menu

To show the current temperature press the MENU key when displaying “DEG” and the display will show the current bar temperature in degrees Celsius. Press the MENU key to go back to the top menu.

Operation Modes (Personalities)

The Aleph2 ET has 3 different personalities which can ether be selected remotely from any standard RDM controller tool or locally using in-built menu. The light behaves different on each mode, since the DMX channel distribution changes according to the desired working personality. These three modes are described bellow.

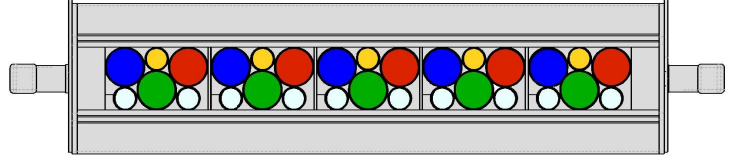
8BIT 6CHANNEL PERSONALITY (FACTORY DEFAULT)

This basic mode will allow to drive each colour using 8 bits resolution setting the values from one of the 6 DMX channels where 000->OFF, 255->Full intensity, as described in the following chart.

1 st Channel	2 nd Channel	3 rd Channel	4 th Channel	5 th Channel	6 th Channel
RED GROUP	GREEN GROUP	BLUE GROUP	AMBER GROUP	WHITE 1 GROUP	WHITE 2 GROUP

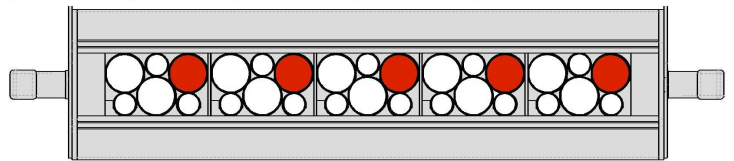
E.g.#1 to turn all the channels to full intensity, set all the channels to 255 value:

1 st Channel	2 nd Channel	3 rd Channel	4 th Channel	5 th Channel	6 th Channel
255	255	255	255	255	255



E.g.#2 to turn only the red group colour to full intensity, set the first channel to 255 value:

1 st Channel	2 nd Channel	3 rd Channel	4 th Channel	5 th Channel	6 th Channel
255	000	000	000	000	000



The smart dimming in this personality follows an “s” curve resulting in a smooth LED output all along the 8 bits range.

16BIT 12CHANNEL PERSONALITY

This mode will allow to drive each colour using 16 bits resolution; setting the values from one of the 12 DMX channels from 000 to 255 where the first channel of each group will be the higher word and the following channel the lower one, as described in the following chart.

1 st Channel	2 nd Channel	3 rd Channel	4 th Channel	5 th Channel	6 th Channel
RED GROUP (HIGH)	RED GROUP (LOW)	GREEN GROUP (HIGH)	GREEN GROUP (LOW)	BLUE GROUP (HIGH)	BLUE GROUP (LOW)
7 th Channel	8 th Channel	9 th Channel	10 th Channel	11 th Channel	12 th Channel
AMBER (HIGH)	AMBER (LOW)	WHITE1 (HIGH)	WHITE1 (LOW)	WHITE 2 (HIGH)	WHITE 2 (LOW)

This personality gives the user full control on the output dimming, so any colour combination can be generated.

EXTENDED 9CHANNEL PERSONALITY

This extended mode offers a wide variety of output effects, turning the Aleph2 ET into a very versatile unit, using 9 DMX channels, as described in the following chart.

1 st Channel	2 nd Channel	3 rd Channel	4 th Channel	5 th Channel	6 th Channel
RED GROUP	GREEN GROUP	BLUE GROUP	AMBER GROUP	WHITE1 GROUP	WHITE2 GROUP
7 th Channel	8 th Channel	9 th Channel			
STROBE FREQUENCY	MASTER DIMMER	TRUE CCT MODE			

COLOUR GRUP INTENSITY (CH1-CH6) operate as described in the 6-Channel personality plus they can be modified or affected by the “strobe frequency” or “Master dimmer channel” as described further in this section. Although this 6 channels have no effect when the “true CCT mode” is activated (9th channel > 010)

STROBE FREQUENCY (CH7) will turn the Aleph2 ET bar into a versatile multi-colour strober with user adjustable frequency.

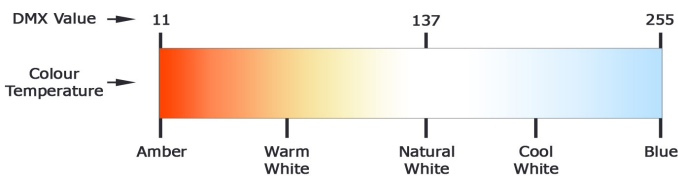
The strobe feature can be activated by setting the channel to a value between 011 and 252. Between the same range,

the strobe frequency can be adjusted by varying the channel value, being 011 the lowest frequency and 252 the highest one. Any other value between 000-010 or 253-255 will stop the strobe feature.

The strobe channel can be used in conjunction with all the other channels, so you can change the current output colour or the master intensity whilst strobing at the selected frequency, all at the same time.

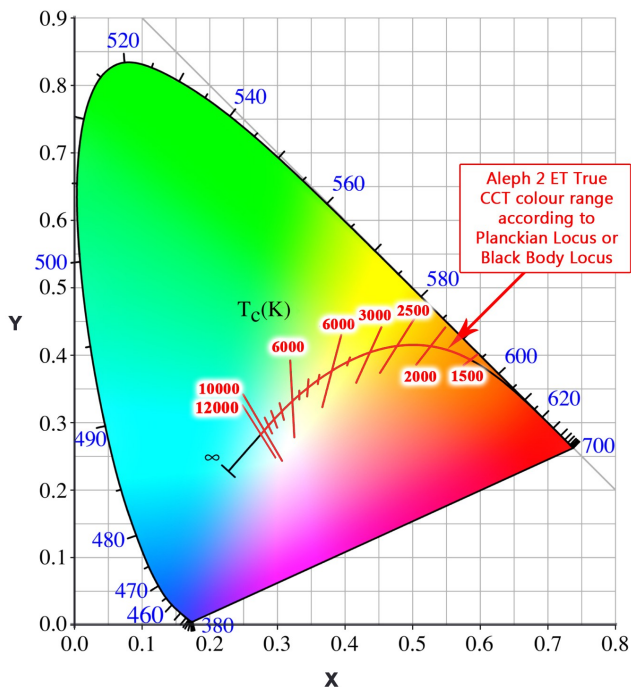
MASTER DIMMER (CH8) drives the general intensity, merging with all other current output channels, being 000 the lowest intensity 0% (light will be OFF, regardless other channel values) and 255 the highest, allowing 100% whatever other channels are demanding.

TRUE CCT MODE (CH9) will turn the Aleph2 ET bar into a true colour temperature adjustable fitting, simulating a tungsten light behaviour.



The white colour feature can be activated by setting the channel to a value between 011 and 255. In this range, the colour temperature can be adjusted by varying the channel value, being 011 the warmest white and 255 the coolest one. Values between 000-010 will stop the true CCT feature.

The true CCT mode channel can be used in conjunction with strobe frequency and master dimmer channels, so you can strobe and/or dim the the current white output set by this channel.



The Aleph2 ET has been laboratory calibrated to closely follow the black body Locus curve along. With this 8 bits resolution allows the light to travel from TRUE warm to cool whites (12000K to 1500) keeping a high CRI for natural colours.

RDM Capabilities

The Aleph2 ET has full RDM capabilities and you can read/write them by using any standard RDM tool. Alternatively the "ENTTEC RDM Controller" software can be downloaded for free from ENTTEC website and be used in combination with a USB PRO, RDM USB PRO or a PRO MK2 DMX widget.

The Aleph2 ET supported RDM parameters are:

Read only fields

- RDM Protocol Version
- Device Model ID
- Software Version ID
- Sensor Value
- DMX Footprint
- Sensor Count
- Manufacturer Label
- Supported Parameters Count

User configurable fields

- Lamp On Mode
 - [OFF] Stays off until instructed
 - [DMX] Strikes upon receiving DMX
 - [ON] Strikes Auto at Power Up
- DMX Personality
 - 8 Bit 6-Channel Mode
 - 8 Bit 9-Channel Mode
 - 16 Bit 12-Channel Mode
- DMX Start Address
- Identify Device
- Factory Defaults

Firmware Update

Updating the firmware to the Aleph2 ET requires an ENTTEC USB Pro or a Pro Mk2 widget plugged in to a PC USB port and to the Aleph2 ET through a standard 5 pin DMX cable.

Please download and install the ET_Update_Firmware application from www.alephlighting.com website, connect the widget to the unit, power it up and run the application. Whilst performing the updating process the display will be turned OFF and fan will be fully ON for about 35 seconds.

Then the display should show "ADR" and the light goes to its original state once the process has finalised.

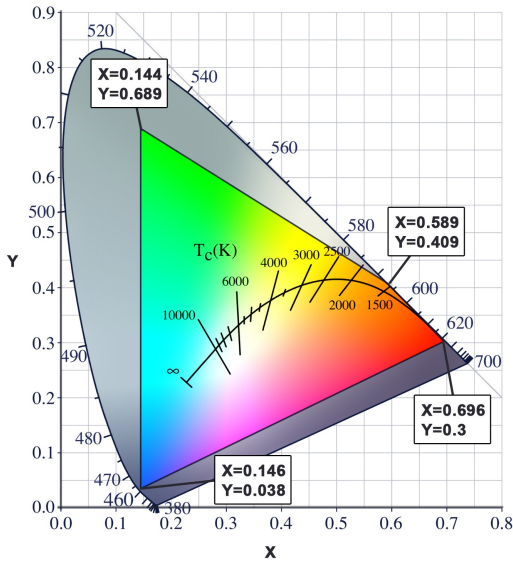
To make sure the process has been successful and check the firmware version, please look at the "Software Version ID" field using an RDM tool such us "ENTTEC RDM

Controller" software which can be downloaded for free from the ENTTEC website.

Specifications

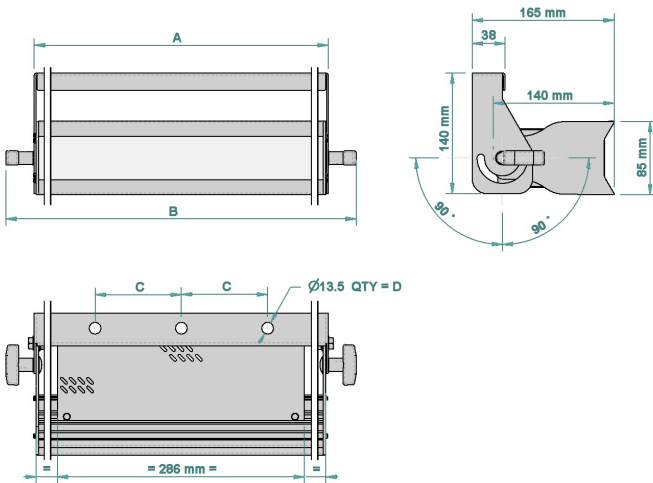
Due to continuous improvements and innovations of all ENTTEC products, specifications and features are subject to change without notice.

Colour Gamut



Item	300mm	600mm	900mm	1200mm
Input Voltage	110 - 240V AC			
Input Frequency	50/60Hz			
Maximum Input Power	90 Watts	180 Watts	270 Watts	360 Watts
Light Output (all leds)	3100 lumens	6200 lumens	9300 lumens	12400 lumens
Lumens/Watt	34.44			
CRI	90			
CREE XP-E Leds Quantity	30	60	90	120
Colours	Red, Green, Blue, Amber, Cool White, Cool White			
Lens	Clear Acrylic			
Beam Angle	25°			
Control Input	DMX512 & RDM E1.20			
Personalities	3 different DMX distributions: 6, 9 and 12 channels			
Smart Dimming	14 bit internal dimming mapped to 8 bit S curve			
Weight (Kg)	3.7	4.9	8.5	11
Weight (Pounds)	8.2	10.8	18.7	24
Cooling Method	Forced air (temperature-regulated for low noise)			
Ambient Temperature	5° to 40° C			
Surface Temperature	Steady state (full intensity output), Ta=45° C: 69° C			
Maximum Surface Temperature	70° C. Dimmed down (error mode) enables when T>70° C and disables after a 5° C drop			
Protection Rating	IP20			
Connectors	1x 5-Pin Male XLR for DMX input 1x 5-Pin Female XLR for DMX output 1x IEC C13/C14 IN/OUT Socket 10Amps for mains			

Dimensions



Item	A	B	C	D
300mm	341mm	406mm	100mm	3
600mm	641mm	706mm	200mm	3
900mm	941mm	1006mm	200mm	5
1200mm	1241mm	1306mm	250mm	5

Ordering Information

Item	Part Number
Aleph2 ET 300mm	73500
Aleph2 ET 600mm	73501
Aleph2 ET 900mm	73502
Aleph2 ET 1200mm	73503

ENTTEC PTY LTD

Head office: 17/5 Samantha Court

Knoxfield VIC 3180 Australia

Tel: +61 3 9763 5755

Fax: +61 3 9763 5688

www.enttec.com

ENTTEC AMERICAS

604A Cornerstone Ct.

Hillsborough NC 27278 USA

Tel & Fax: (888) 454-5922

[email: sales@enttec.com](mailto:sales@enttec.com)

www.alephlighting.com