

# LINDY®

## CONNECTION PERFECTION

### WLAN Projector Server Compact

User Manual

*English*



LINDY No. 32697

CE

FC

For Home and Office Use  
Tested to Comply with  
FCC Standards

[www.LINDY.com](http://www.LINDY.com)

## Table of Contents

1. Overview.....	3
2. Quick Start.....	5
3. Windows Client Utility .....	8
3.1 Starting Program.....	8
3.2 Login .....	9
3.3 Main User Interface .....	9
3.4 Screen Projection.....	10
3.5 Menu Description .....	10
3.5.1 Show Login Code .....	11
3.5.2 Open Admin Web Page .....	11
3.5.3 WiFi AP-Client Configuration.....	12
3.5.4 Searching Server .....	12
3.5.5 Projection Source.....	13
3.5.6 Auto WiFi Connect.....	13
3.5.7 Auto Power Manager .....	14
3.5.8 Hide UI.....	14
3.5.9 Advanced Screen Capture.....	15
3.5.10 Make WPS Token .....	16
3.5.11 Copy Application to desktop.....	17
3.5.12 Hot Key .....	18
3.5.13 About.....	18
3.5.14 Exit .....	19
4. Mac Client Utility.....	19
4.1 Launch Application .....	19
4.2 Main User Interface .....	21
4.3 Screen Projection.....	21
5. Web Management .....	22
5.1 Home Page.....	22
5.2 Download Software.....	22
5.3 Login Web Admin.....	23
5.3.1 System Status.....	24
5.3.2 Network Setup .....	25
5.3.3 OSD Setup.....	26
5.3.4 Projection Setup .....	27
5.3.5 Change Passwords.....	28
5.3.6 Reset to Default .....	28
5.3.7 Firmware Upgrade .....	29
5.3.8 Reboot System .....	30
5.3.9 Logout .....	30
6. Appendix .....	31
Screen Image Background Maker .....	31

## 1. Overview

WPS Dongle is a must-have device for your meeting room! It turns your existing "wired" projector into a "high-end wireless" projector. With the revolutionary Plug-and-Show wireless projection features, WPS makes every of your presentation and meeting efficient and successful.

- High Performance Wireless Projection

With the revolutionary high performance wireless projection, you can easily share the multimedia on the big monitor with friends without cable hassle.

- Easy installation

Download the software from web management page directly, or make a "Plug & Show" token to project wirelessly right away

- Plug & Show

There is an easy tool to make a Plug & Show USB Token on UI menu. Just link your PC/Laptop to WPS (through WLAN or Ethernet), plug the token into a USB port, and in seconds, your screen will be wireless projected to the connected projector!

- Macintosh(Mac) wireless Projection

WPS Dongle supports Mac client connected and projected wirelessly. By launching the Mac client software which can be downloaded from the web management page, WPS provide the same experience to Mac user to utilize the wireless presentation feature.

- 4-to-1 Split Screen Projection

With this 4-to-1 split screen feature, up to four PC screens can be projected to one projector in the same time. Thus you can easily do side-by-side comparison from four PC / PDAs to increase meeting productivity!

- Smartphone wireless projection

WPS Dongle supports MobiShow function for windows mobile 5/6 system. By launching MobiShow utility, MobiShow brings your mobile screen to big screen and which can play photos and PtG files stored in your mobile phone for presentation.

- Change Standby Screen

You can use the application "Screen Image Background Maker" to change the Splash Screen. Design the image with message you would like to present, upload it through web control page, and you could have customized starting page.

- AP Client Mode

You can enable the AP-Client Mode function to let WPS join the existing Access Point through Wi-Fi. This feature provides the flexibility of wireless network deployment in enterprise environment.

- Support PoVGA

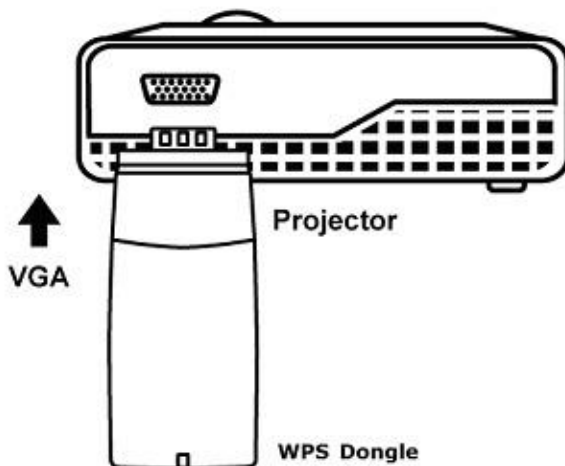
Connect WPS Dongle to a projector supporting PoVGA, the power can be supplied directly from the VGA port without external power adapter.

## Features

- Support Windows Win7, Vista, XP, and Mac
- Support Macintosh(Mac) version 10.5 and above.
- Plug and Show! No installation required ... just plug in the accompanied token to a USB port, and hassle free presentation can be started in seconds.
- 4-to-1 split screen projection! Turn one projector into four, increase meeting productivity right away.
- Smartphone wireless projection! PC-less stylish presentation becomes possible!
- Provide session security login, wireless WEP/WPA key and Gatekeeper function to protect presentation contents and keep good security to office networks.
- Support High Performance screen projection
- Changeable Splash Screen image!
- SNMP Manager! To manage the devices easily
- AP-Client Mode! Deploy wireless network in enterprise environment easily
- Support PoVGA.

## 2. Quick Start

- 1) Please plug WPS Dongle into projector VGA port, and open projector power to use



- 2) Turn on WPS Dongle.
  - ◆ When Projector shows the default menu on the screen as below, it indicates the WPS box is ready now.

LOGIN CODE: 1234

# Wireless Presentation System

WPS Dongle



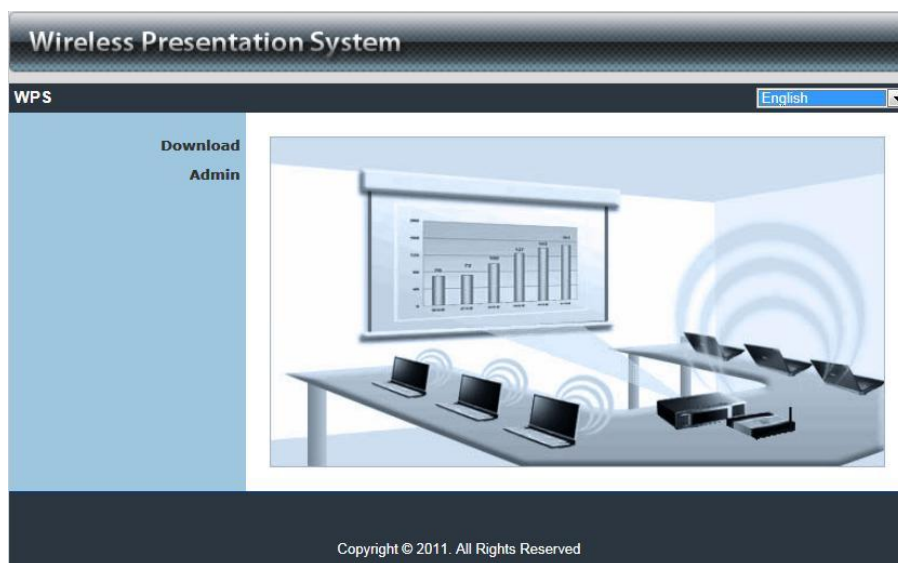
### Quick Guide

1. Make sure your WLAN is enabled, and connect to Wireless Presentation System.
2. Open your browser, or enter the IP address (refer to below server IP address)
3. Click on "Download", and execute the installation program.
4. Make sure your personal firewall allows WPS software to pass through!
5. Enter the LOGIN CODE to start projection!

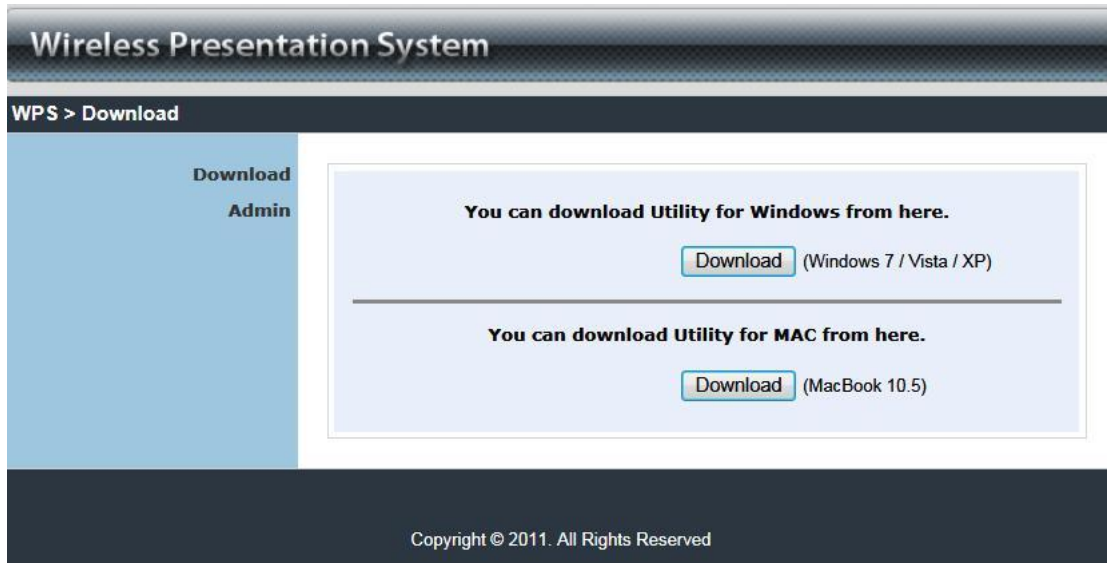
Server IP: **192.168.100.10**    SSID: **WPS Dongle**  
 Resolution: 1024x768    Channel: 1  
 Version: 1.0.0.0    Security: OFF

PoVGA

- 3) Make sure your PC WLAN is enabled already, and connect your PC with WPS Dongle.
- 4) Open your browser and enter the IP address to access the WPS web home page.
  - ◆ The default IP address of WPS is **192.168.100.10** or refers to the IP address shown on the left corner of projector screen.



- 5) Download the client software. Please select the "Win7 / Windows Vista / XP" or "MAC" and execute the installation program.  
 After installing the program, you will see the WPS shortcut on the PC screen.



- 6) Make sure your personal firewall allows WPS software to pass through.
- 7) Select device that you want to projection



- 8) Enter the **LOGIN CODE** and You can see the login code on the projector screen



9) Click the “Play” button to start projection!



### 3. Windows Client Utility

#### 3.1 Starting Program

After you download WPS Windows program via web page successfully, then follow below steps to start.

1) Click WPS icon to execute the program.



2) Program start to search for WPS box automatically,

3) If WPS box found then “Login Code” dialog box will be pop up on the PC screen.

- **Searching for WPS box**





- WPS box is found and enter login code to start.



### 3.2 Login

- 1) After "Login Code" dialog box shown, enter login code to start presentation.
- 2) You can see the login code shown on the projector screen.



### 3.3 Main User Interface



3.4 Screen Projection

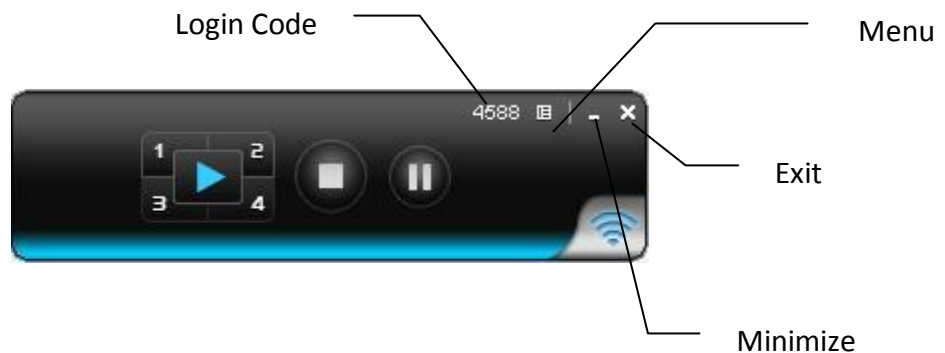
Click the “Play” button for full or split screen, you can project the main screen on to the display immediately, click the “Pause” button, you can freeze your projection screen, click the “Stop” button to stop projecting your screen, by clicking speedy mode button, the projection will enter speedy mode for faster projection.

\*. 4-1 function will be disabled in speedy mode.



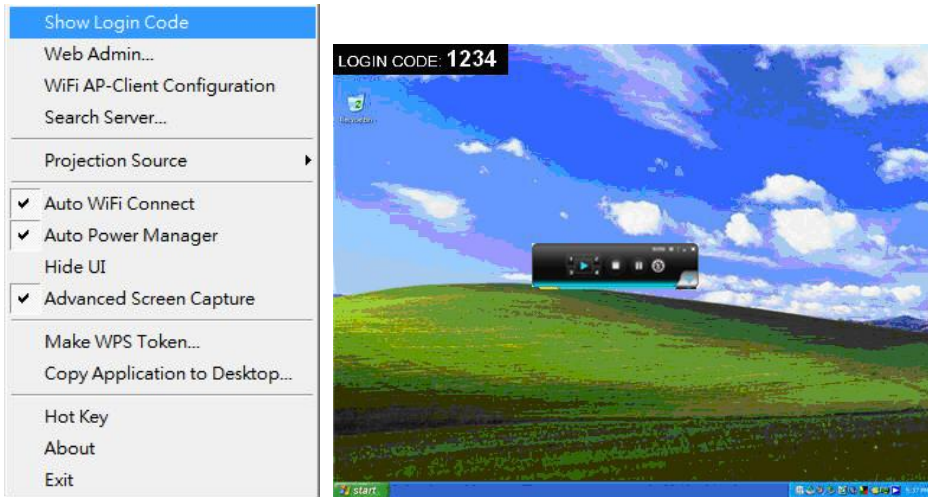
Button	Description
	Full Screen projection
	Project to Split #1
	Project to Split #2
	Project to Split #3
	Project to Split #4
	Stop projecting
	Pause projecting

3.5 Menu Description



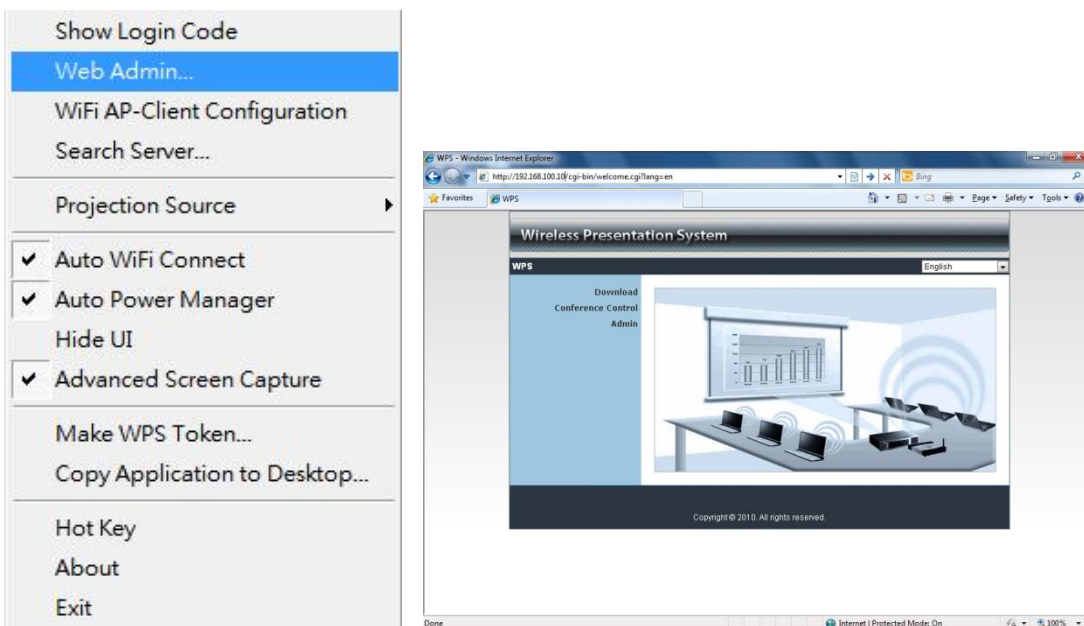
### 3.5.1 Show Login Code

Click **“Show Login Code”**, it will display the login code on the right-upper of desktop and close it automatically after 10 seconds. You can also click on the area to close this window manually.



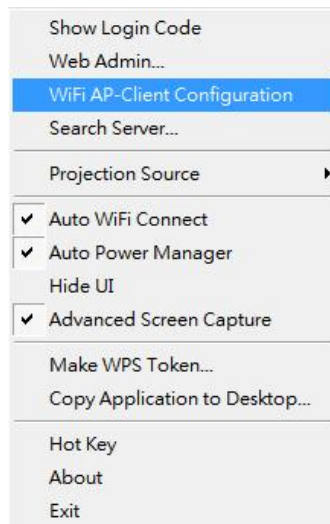
### 3.5.2 Open Admin Web Page

Click  to open function menu and select **“Web Admin”** management web page. The web page detailed functions will be described on next chapter.



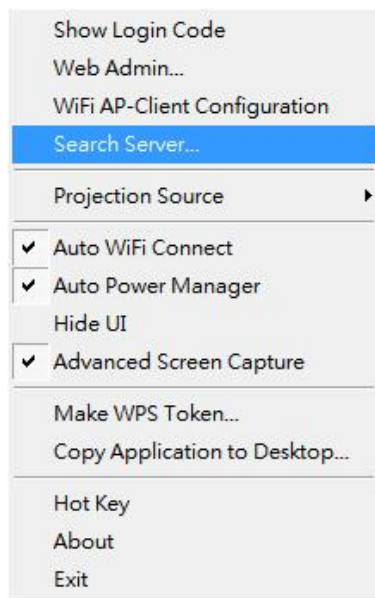
### 3.5.3 WiFi AP-Client Configuration

Click “**WiFi AP-Client Configuration**” to set AP client mode to join others Access Point via wireless, besides, the others user client also can login WPS for presentation and join to others Access Point network,



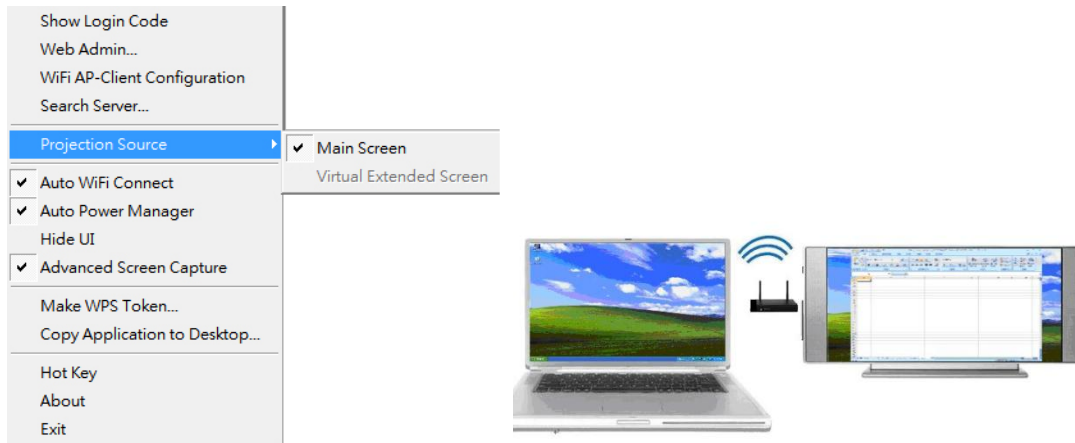
### 3.5.4 Searching Server

Click “**Search Server**” to re-search the WPS again.



### 3.5.5 Projection Source

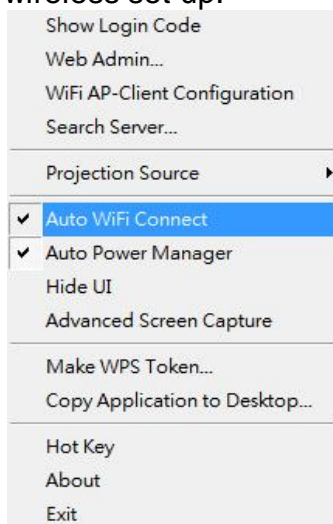
Click the “**Projection Source**”, you can select to project the main screen of desktop or the virtual extended screen.



P.S: Virtual Extended Screen option  
You need to install “VDD.exe” driver first which is stored in the USB token.  
**Note:** Unsupported Win7 starter.

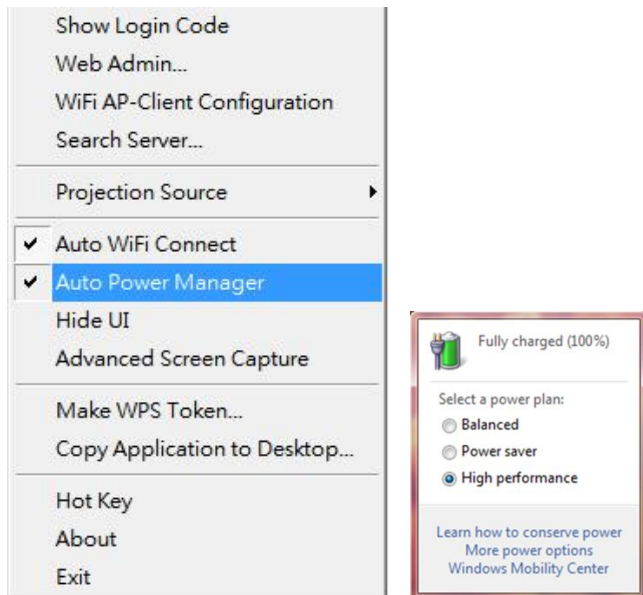
### 3.5.6 Auto WiFi Connect

Click “**Auto WiFi Connect**” to enable the auto WiFi discovery and connection function for quick wireless set up.



### 3.5.7 Auto Power Manager

To make the highest projection performance, application will turn the PC's windows power scheme from current settings to "highest performance", however, you can click the "**Auto Power Manage**" to enable or disable this function and restore you power scheme immediately.



### 3.5.8 Hide UI

Click the "**Hide UI**", you can choose to hide or display the application control panel from projection screen.



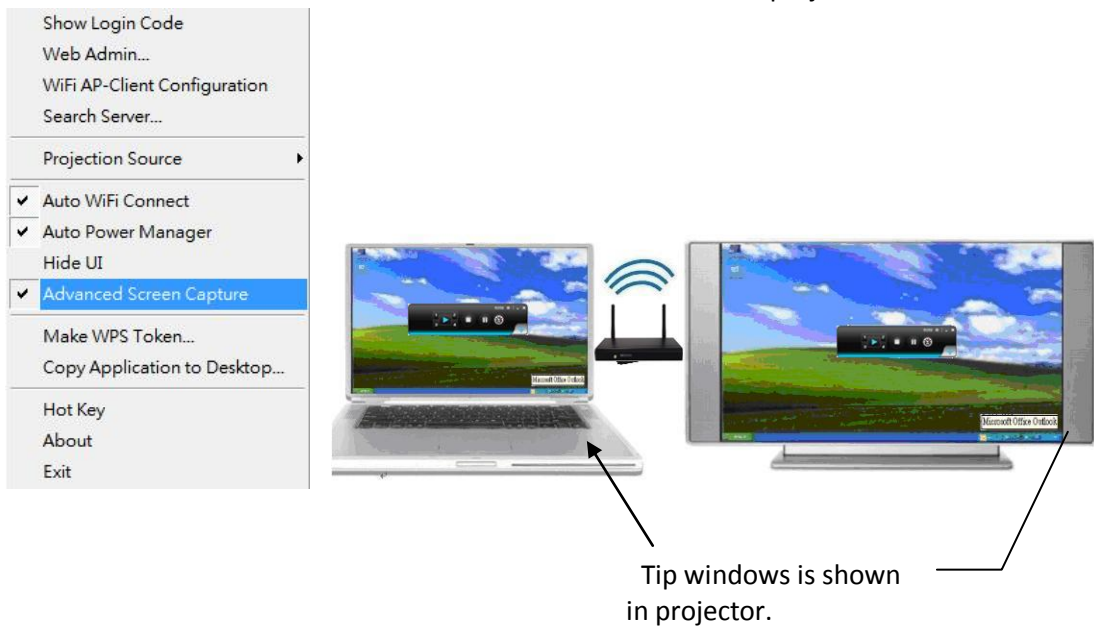
### 3.5.9 Advanced Screen Capture

Click the “**Advanced Screen Capture**”, you will be able to see tip windows and other layered windows (include the main UI) on the connected display. However, the mouse cursor may blink from time to time when you are projecting your PC screen!

- Disable “Advanced Screen Capture”.

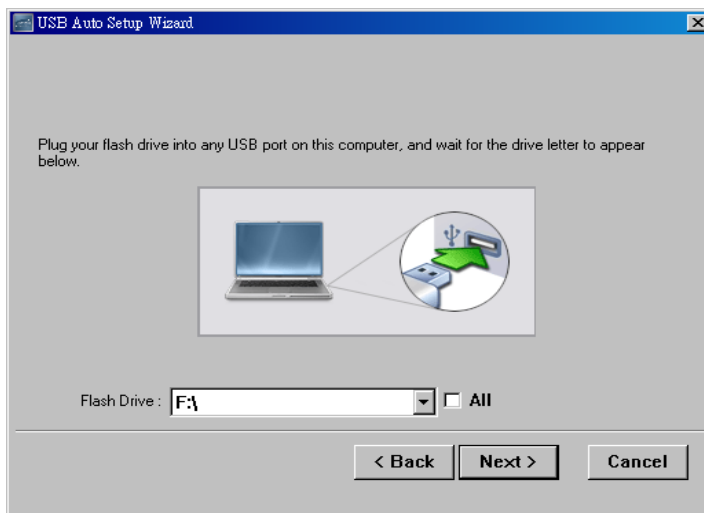
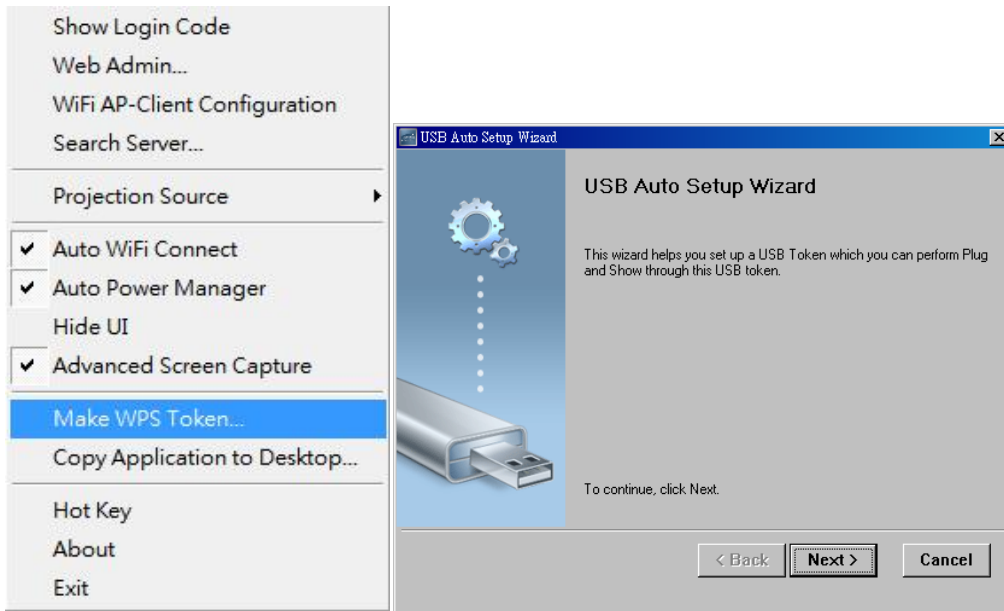


- Enable “Advanced Screen Capture”.



### 3.5.10 Make WPS Token

Click **“Make WPS Token”** to make a USB WPS Token, you can insert a USB thumb drive and follows the wizard to make the Token.

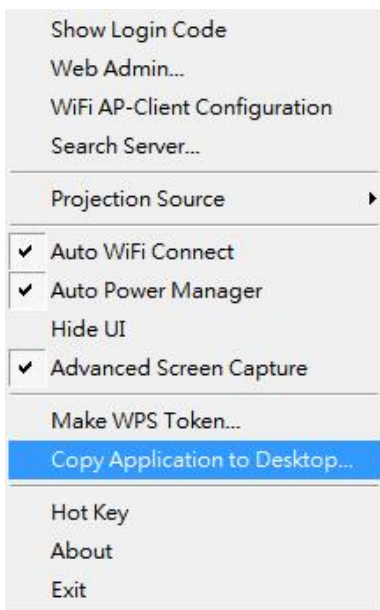






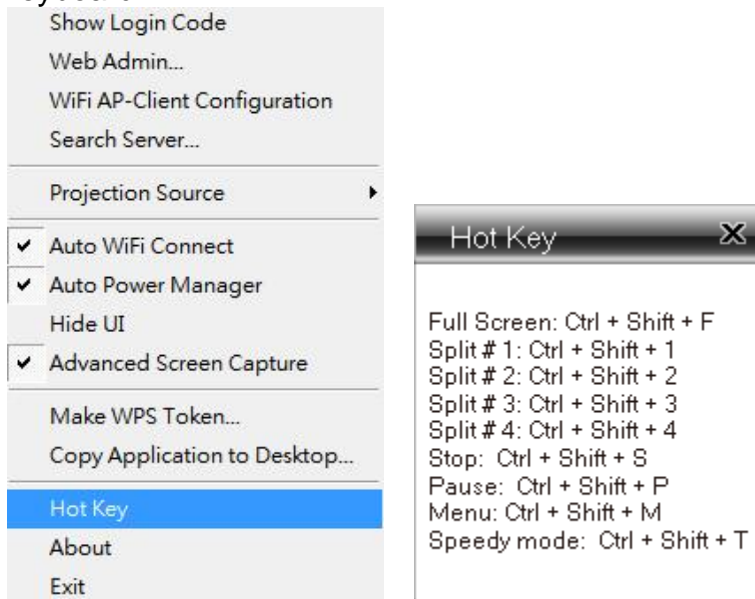
### 3.5.11 Copy Application to desktop

Click the “**Copy Application to desktop**”, it will copy the application to your desktop immediately even you don’t have the system privilege



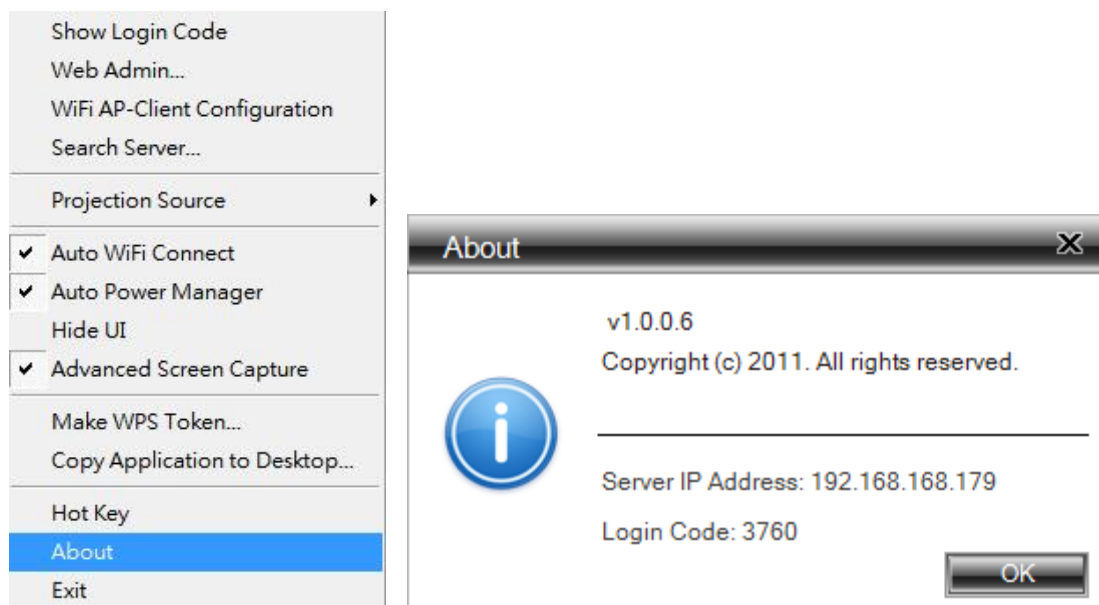
### 3.5.12 Hot Key

Click “**Hot Key**” to show Hot Key guide. You can use hot key to control the projection by keyboard.



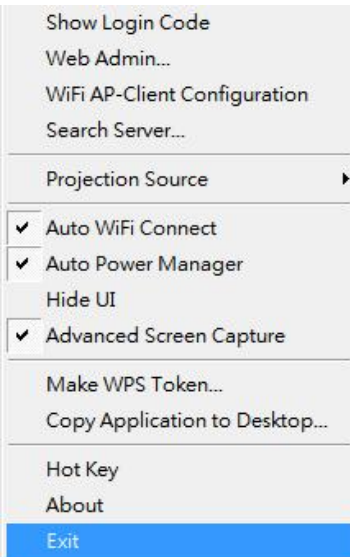
### 3.5.13 About

Click “**About**” to show system information. It includes product model name, Client version, IP address and other information.



3.5.14 Exit

Click “**Exit**” to exit this application. It will stop current playing status and close the application immediate.



4. Mac Client Utility

a. Launch Application

- 1) Enable your WiFi and connect to WPS device.
- 2) Execute WPS client software for Mac.



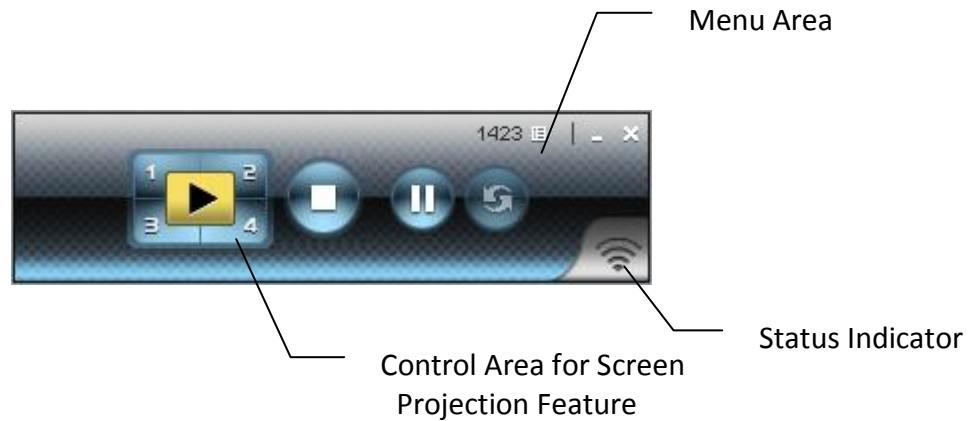
3) Launch WPS software and enter the login code.



4) Start Projection.



**b. Main User Interface**



**c. Screen Projection**

Click the “Play” button for full or split screen, you can project the main screen on to the display immediately, click the “Pause” button, you can freeze you projection screen, and click the “Stop” button to stop projecting your screen.



Button	Description
	Full Screen projection
	Project to Split #1
	Project to Split #2
	Project to Split #3
	Project to Split #4
	Stop projecting
	Pause projecting
	Refresh Screen

## 5. Web Management

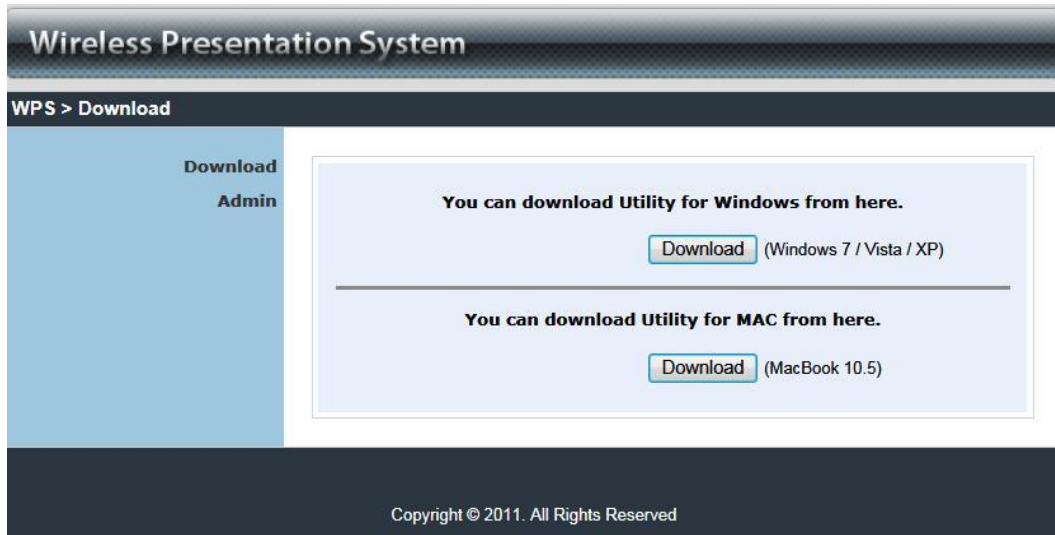
### a. Home Page

1. Make sure your PC connect to WPS box successfully.
2. Open your browser, it will enter WPS home page automatically.
3. If not, enter your IP address on the browser, you can see the IP on the projector screen.
4. The default IP is 192.168.100.10



### b. Download Software

1. Select "Download software" function.
2. Please select the "Win 7 / Windows Vista / XP" or "Windows Mobile 5/6" or "Mac Utility" and execute the installation program.
3. Follow Installation Wizard instructions to proceed till the installation process complete.
4. If pop up "**Windows Security Alert**" because Windows firewall block this program. You just press "**Unblock**" button to continue installation.
5. Once installation complete, a utility shortcut come out on the screen.



c. Login Web Admin



1. Click [**Admin**] and then enter password to login web page.
2. The password default value is “admin”.

i. System Status

The screenshot shows the 'System Status' page in the WPS Admin interface. The page is titled 'Wireless Presentation System' and has a breadcrumb trail 'WPS > Admin > System Status'. A 'Logout' button is visible in the top right corner. On the left side, there is a navigation menu with options: System Status (selected), Network Setup, OSD Setup, Projection Setup, Change Passwords, Reset to Default, Firmware Upgrade, and Reboot System (with a red square icon). The main content area displays the following information:

<b>Model Name</b>	WPS Dongle
<b>Versions</b>	
Firmware Version	1.0.0.0
<b>Network Status</b>	
IP Address	192.168.0.104
Subnet Mask	255.255.255.0
Default Gateway	192.168.0.1
Wireless MAC Address	00:12:5F:02:B9:0C
<b>Connection Status</b>	
Projecting Status	Waiting for Projecting
Total Users	0

At the bottom of the page, there is a copyright notice: 'Copyright © 2011. All Rights Reserved'.

Click [**System Status**], shows current system status.

**Model Name:** Product model name

**Versions:**

1. **Firmware version no.:** Product firmware version number.

**Network Status:**

1. **IP address :** IP address of WPS device.
2. **Subnet Mask** subnet mask
3. **Default Gateway** default gateway
4. **Wireless MAC address** wireless MAC address
5. **Wire MAC address** wire MAC address

**Connection Status:**

1. **Projecting status:** which is “Waiting for projecting” or “Projecting”
2. **Total Users:** It shows how many users login into WPS box.



## ii. Network Setup

There are many kinds of operating configurations as below.

### < Auto-Configuration Network Setup >

The default setting of the WPS box is DHCP client. When the WPS box is connected to a LAN that already has a DHCP server present, the WPS box takes an IP address assigned to it by the server. When the WPS box is connected to a LAN that does not have a DHCP server, the WPS box becomes the DHCP server in the network.

#### < IP Setup >

- ◆ You can select “obtain IP address automatically” or “Use the following IP address”
- ◆ IP Address: The default value is 192.168.100.10.
- ◆ Subnet Mask: The default value is 255.255.255.0
- ◆ Default Gateway: The default value is 192.168.100.10
- ◆ DNS Server: The default value is 192.168.100.10

#### < DHCP Server Setup >

- ◆ You can select “auto(Enable/Disable DHCP Server)” or “Disable”
- ◆ Start IP: The start IP address of DHCP Server.
- ◆ End IP: The end IP address of DHCP Server
- ◆ Subnet Mask: The default value is 255.255.255.0

- ◆ Default Gateway: The default value is 192.168.100.10
- ◆ DNS Server: The default value is 192.168.100.10

< **Wireless Setup** >

- ◆ Wireless LAN: The default value is “Enable”.  
Embedded AP SSID: SSID string,max. Length is 32 bytes.
- ◆ **Connect to Existing AP:** This is “AP client” mode feature. By this feature you can join others Access Point via wireless.  
First, enter the existing AP’s SSID and require security key in “**Existing AP SSID**” and “**Key**”, then reboot your system. After these steps, WPS will connect to this AP by wireless automatically.  
**Note:** The default value of AP client mode is “Disable”, and LAN function will be disabled during AP client mode.
- ◆ Region: default value is “Worldwide”.
- ◆ SSID Broadcast: The default value is “Enable”
- ◆ Channel: to set fixed channel or Auto. The “Auto” means after power on WPS, it will scan all of wireless channel and select clear one channel automatically.
- ◆ Encryption: you can select “Disable” or one of WEP/WPA/WPA2 64bit or 128bit in ASCII or HEX string.
- ◆ Key: If Encryption is enabled, you have to set key value according to the encryption mode you selected.

< **Gatekeeper** >

Gatekeeper is designed for ensuring the enterprise network security within WPS box

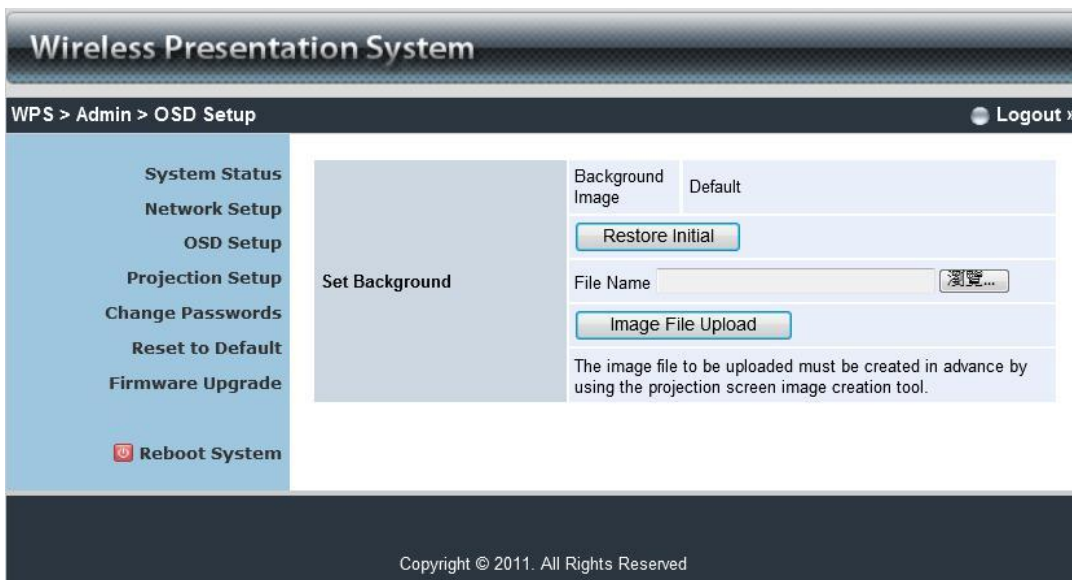
- ◆ All Block can block Guest Users(through wireless) to access all office network(LAN),
- ◆ All Allow can pass Guest Users(through wireless) to access all office network
- ◆ Internet Only can block Guest Users (through wireless) from office network (LAN) but still reserve internet connection capability.

<**Apply** >: press button to select this mode.

<**Cancel**>: press button to abort action.

<**Back**>: Back to Operating mode main menu.

iii. OSD Setup



Click [**OSD Setup**] button, to change OSD standby image.

- ◆ **<Restore Initial>**: Restore to default OSD standby image.
- ◆ **<Image File Upload>**: Upload the customized OSD standby image. (You need to convert the image to system defined format using provided IB Maker utility which is stored in the USB token.)

◆

#### iv. Projection Setup

Click [**Projection Setup**] button

- ◆ **<Resolution>**:  
VGA: XGA (1024\*768), WXGA (1280x800), WXGA (1280\*768) and SVGA (800\*600).  
The default value is XGA.  
HDMI: 720p (1280\*720)
- ◆ **<Login Code>**: You can select “Disable”, “Random”, or “Use the following code” to set a specified 4-characters Number.
- ◆ **<Apply>**: Confirmation and Save modifications
- ◆ **<Cancel>**: Cancel all the modifications

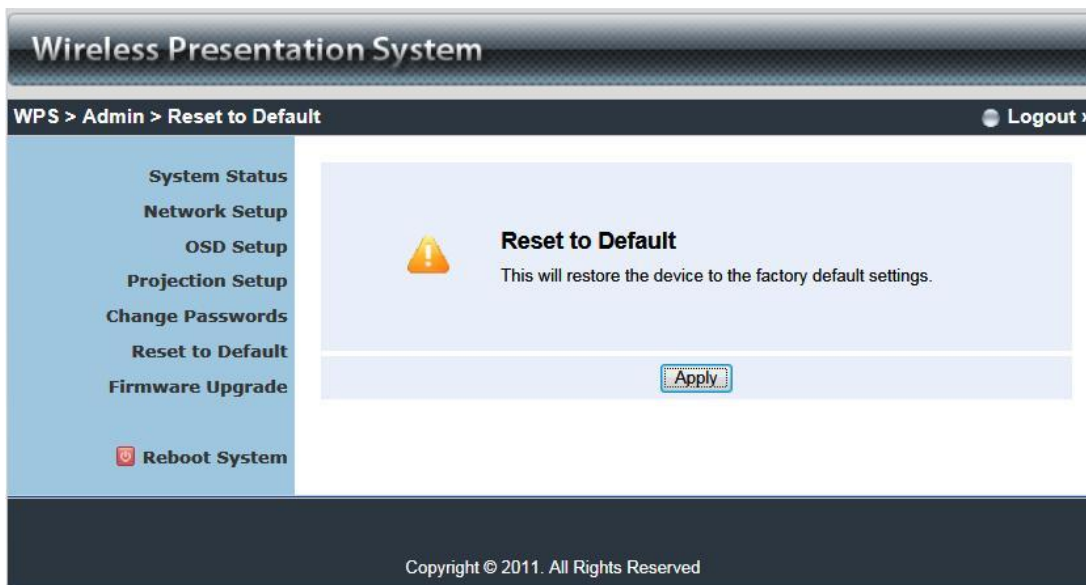
v. Change Passwords



Click [**Change Password**] button, to change password value.  
The length of password is up to 8 characters.

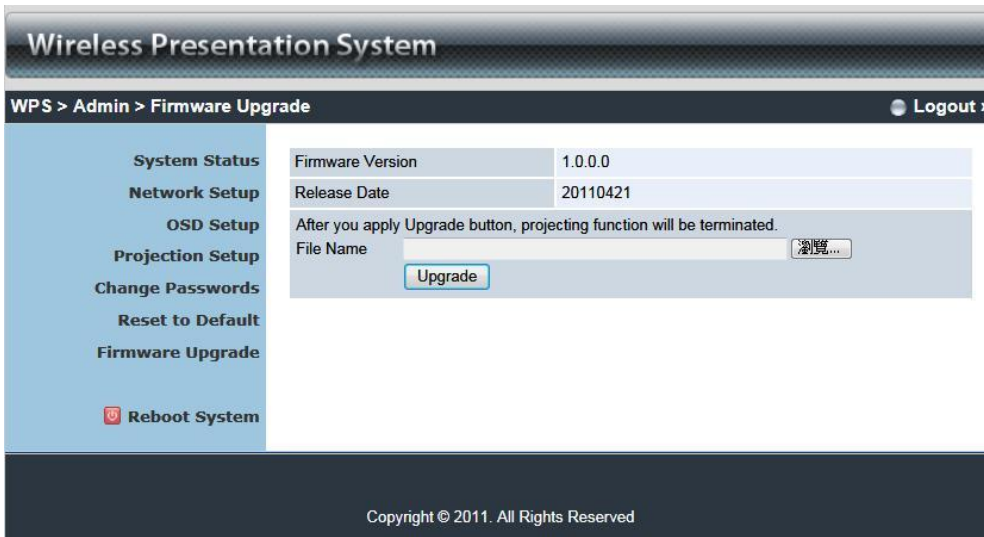
- ◆ **<Enter New Password>**: enter new password you want to change for each category.
- ◆ **<Confirm New Password>**: double confirm new password.
- ◆ **<Apply>**: Confirmation and Save modifications.

vi. Reset to Default



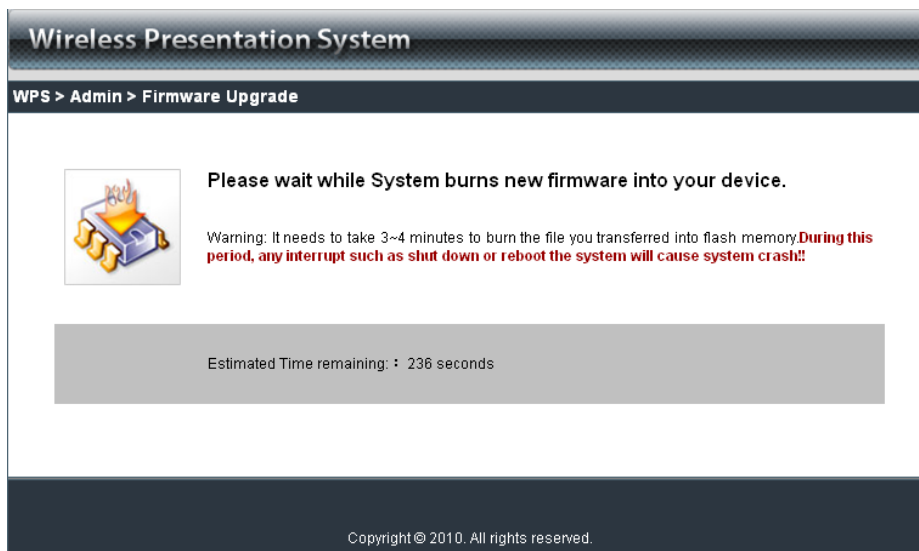
Click [**Reset to Default**] button to restore factory default settings.  
**<Apply>**: Confirmation and action.

vii. Firmware Upgrade



Click **[Firmware Upgrade]** button to upgrade firmware.

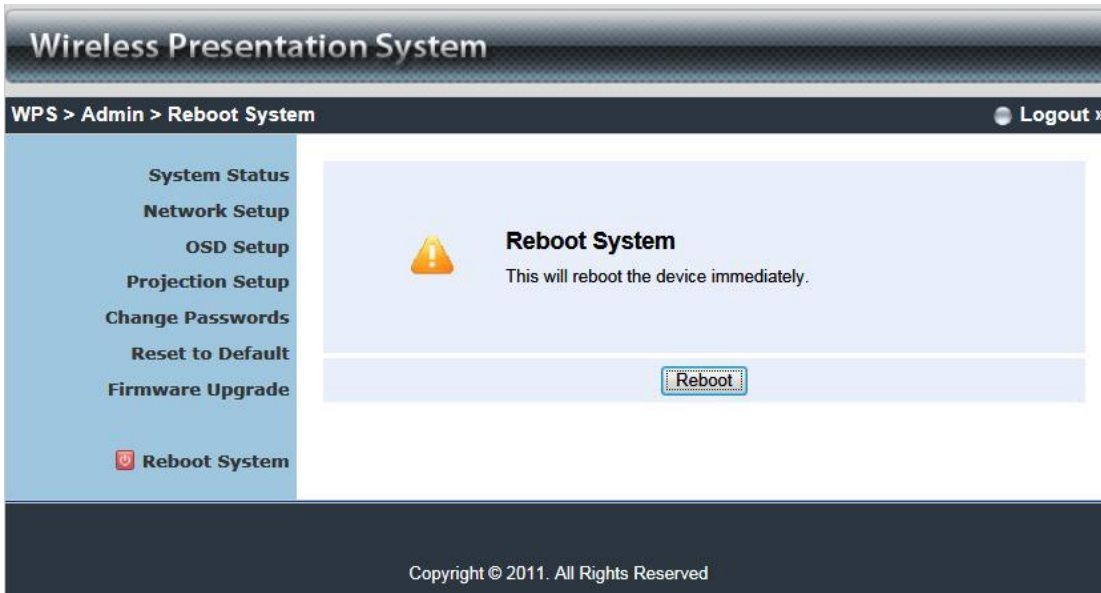
1. Firstly, you have to get latest firmware image file from your vendor.
2. Click **<Browse>** to specify file name you want to upgrade.
3. Click **<Upgrade>** to start.
4. A warning message shown and count down counter on the screen.
5. After a few minutes, a complete message shown on the screen.
6. Restart WPS box to take effect.





**Warning:** Don't power off WPS while firmware upgrade in progress, otherwise will cause your Box doesn't work and have to return device to your vendor for fixing.

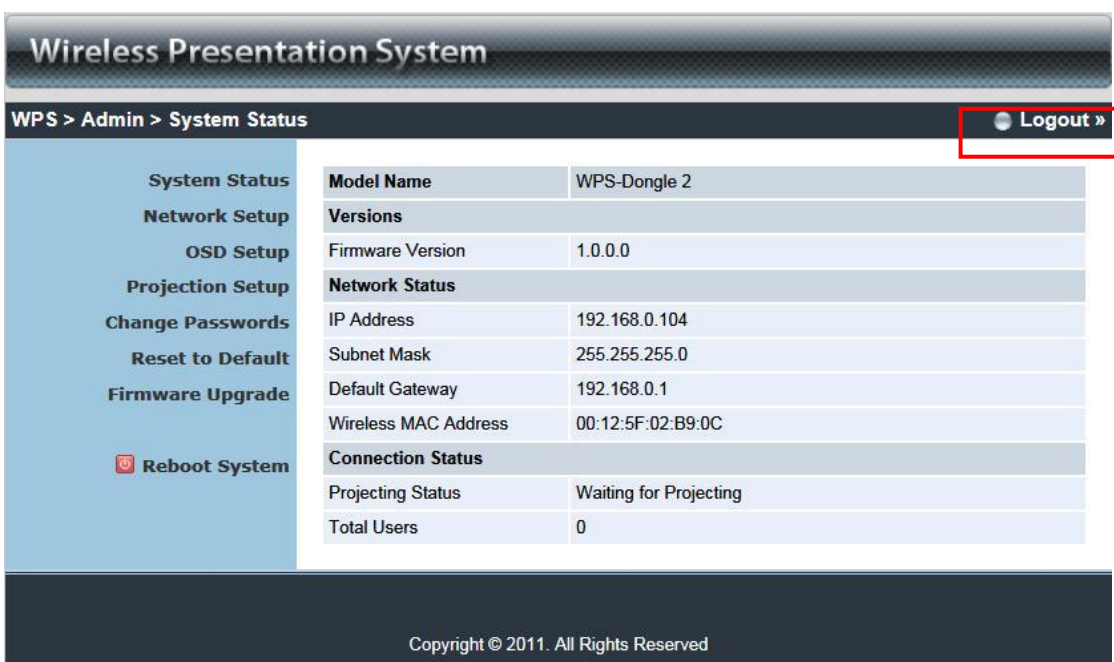
viii. Reboot System



Click [**Reboot System**] button, to restart system

- ◆ **<Reboot>**: reboot system automatically.

ix. Logout



**6. Appendix**

**Screen Image Background Maker**

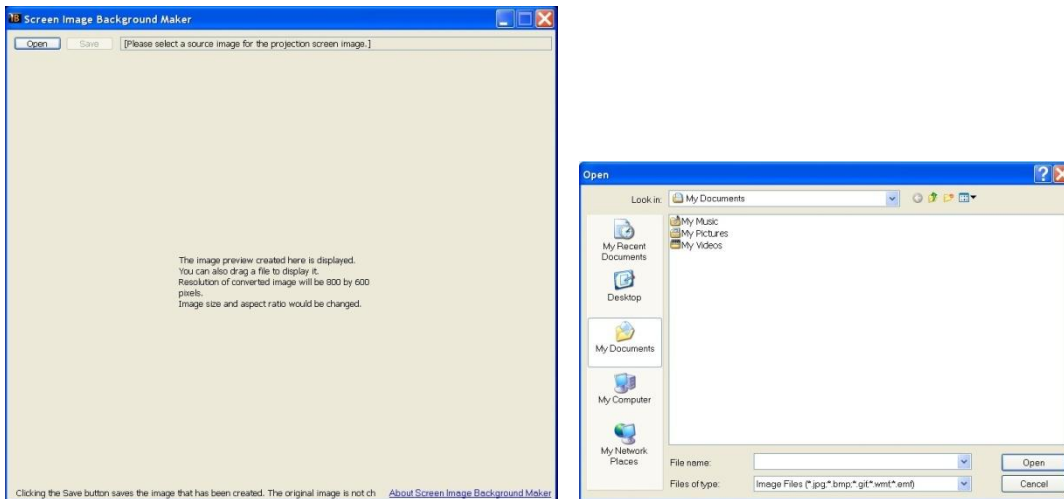
**Quick Installation Guide**

Version: 1.00

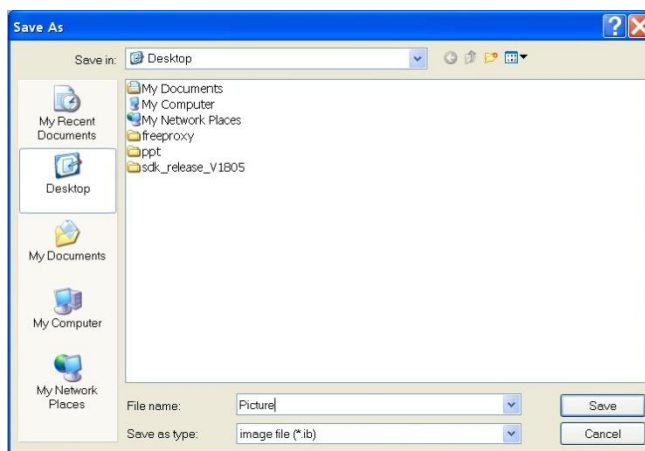
- 1) Run the “Screen Image Background Maker” and follows the wizard to convert the image file.



- 2) Press “Open” to select a file to convert this image for background use.



- 3) Press “Saver” to save this file.(\*.ib)

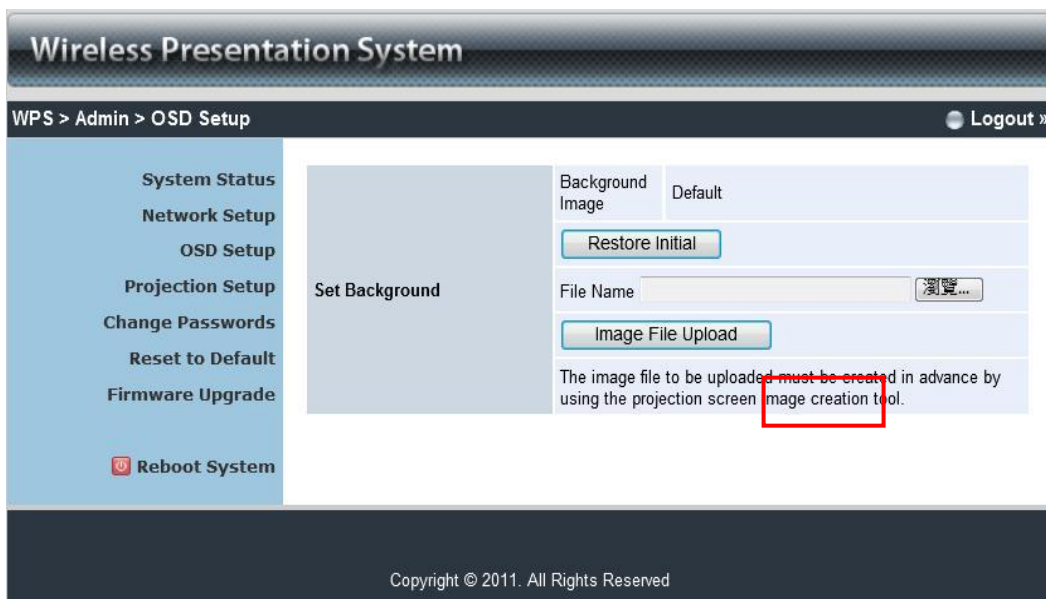


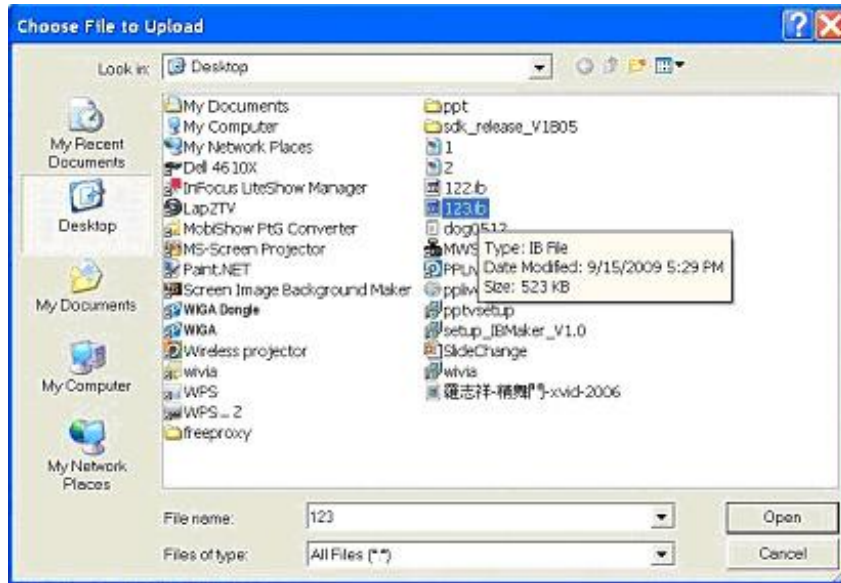


4) Please connect to WPS webpage, and then connect to OSD setup page.



5) Press "Browser" to choose the \*.ib file.





- 6) Press “image file upload” to upload your background image. Then it will show the message as below.



**Note:** You may find “Screen Image Background Maker” in the USB Token.

# Radio Frequency Energy, Certifications

## FCC Warning

This equipment has been tested and found to comply with the limits for a Class B Digital device, pursuant to part 15 of the FCC Rules. These limits are designed to provide reasonable protection against harmful interference in a residential installation. This equipment generates, uses, and can radiate radio frequency energy and, if not installed and used in accordance with the instructions, may cause harmful interference to radio communications. However, there is no guarantee that interference will not occur in a particular installation. If this equipment does cause harmful interference to radio or television reception, which can be determined by turning the equipment off and on, the user is encouraged to try to correct the interference by one or more of the following measures:

- Reorient or relocate the receiving antenna
- Increase the separation between the equipment and receiver
- Connect the equipment into an outlet on a circuit different from that to which the receiver is connected
- Consult the dealer or an experienced technician for help

You are cautioned that changes or modifications not expressly approved by the party responsible for compliance could void your authority to operate the equipment.

This device complies with part 15 of the FCC Rules. Operation is subject to the following two conditions:

1. This device may not cause harmful interference, and
2. This device must accept any interference received, including interference that may cause undesired operation

## CE Statement, EMC Compatibility

This device complies with EN Standards EN55022 and EN55024 according to the relevant EC EMC Directive. It must be used with shielded cables only to maintain EMC compatibility.

Dieses Produkt entspricht den einschlägigen EMV Richtlinien der EU und darf nur zusammen mit abgeschirmten Kabeln verwendet werden.

## LINDY Herstellergarantie

LINDY gewährt für dieses Produkt über die gesetzliche Regelung hinaus eine zweijährige Herstellergarantie ab Kaufdatum. Die detaillierten Bedingungen dieser Garantie finden Sie auf der LINDY Website aufgelistet bei den AGBs.



**WEEE (Waste of Electrical and Electronic Equipment),  
Recycling of Electronic Products**

In 2006 the European Union introduced regulations (WEEE) for the collection and recycling of all waste electrical and electronic equipment. The wheeled bin symbol shown indicates that this product must not be disposed of with household waste. Instead the product must be recycled in a manner that is environmentally friendly. For more information on how to dispose of this product, please contact your local recycling centre or your household waste disposal service. Each individual EU member state has implemented the WEEE regulations into national law in slightly different ways. Please follow your national law when you want to dispose of any electrical or electronic products.

More details can be obtained from your national WEEE recycling agency.

### Germany / Deutschland

Die Europäische Union hat mit der WEEE Richtlinie umfassende Regelungen für die Verschrottung und das Recycling von Elektro- und Elektronikprodukten geschaffen. Diese wurden von der Bundesregierung im Elektro- und Elektronikgerätegesetz – ElektroG in deutsches Recht umgesetzt. Dieses Gesetz verbietet vom 24. März 2006 an das Entsorgen von Elektro- und Elektronikgeräten über die Hausmülltonne! Diese Geräte müssen den lokalen Sammelsystemen bzw. örtlichen Sammelstellen zugeführt werden! Dort werden sie kostenlos entgegen genommen. Die Kosten für den weiteren Recyclingprozess übernimmt die Gesamtheit der Gerätehersteller.



LINDY No 32697

2<sup>nd</sup> Edition, April 2013

[www.lindy.com](http://www.lindy.com)