

Installation Manual

Introduction

This 3.5" enclosure is designed to provide a solution to connect existing storage devices such as 3.5" IDE hard drive to USB2.0. This 3.5" enclosure can provide peak data transfer rate up to 480Mbps for USB 2.0 interface.

Features

General

- Support plug-n-play. Hot- Swap and Wake-UP.
- Accommodate all existing storage devices such as 3.5" IDE hard drives.
- Support Self power mode.
- Support Windows98. 98SE, ME, 2000 and XP operating system.

USB 2.0

- Compliant with Universal serial Bus Specification Revision 2.0
- Compliant with ATA/ATAPI-6 Specification
- Support LBA 48, PIO Mode 0-4, DMA Mode 0-2, UDMA Mode 0-5
- Compliant with USB Mass Storage Bulk only Specification 1.0
- Support High-Speed (480Mbps) and Full-Speed (12Mbps) mode

What is in your package?

Please check whether the package contains following items:

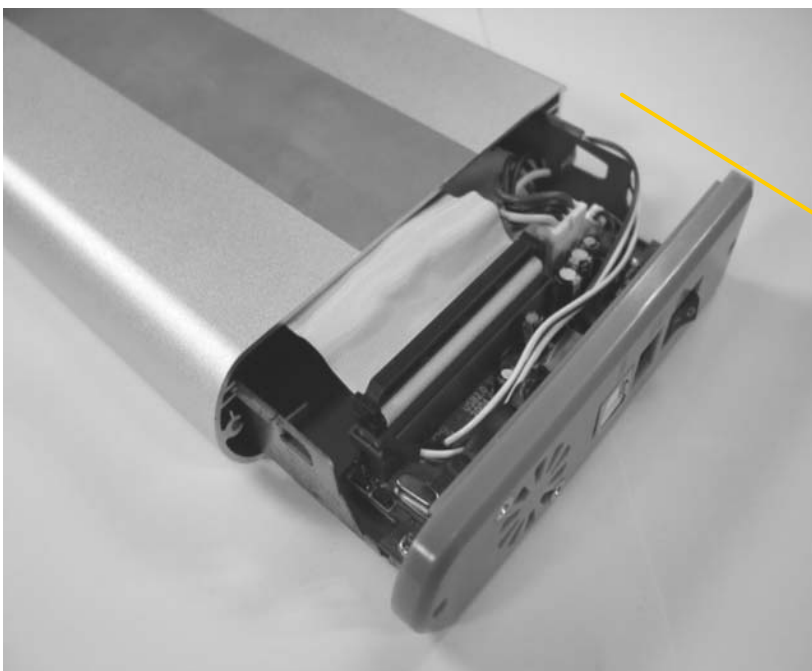
- One 3.5” Enclosure
- Installation Manual
- USB 2.0 (Type ‘A’ to Type ‘B’) cable
- AC-DC Power Supply 12VDC
- Screws for securing the enclosure and 3.5” hard drive.
- Driver CD

If any item is missing or damaged, please contact the retailer as soon as possible.

HARDWARE INSTALLATION

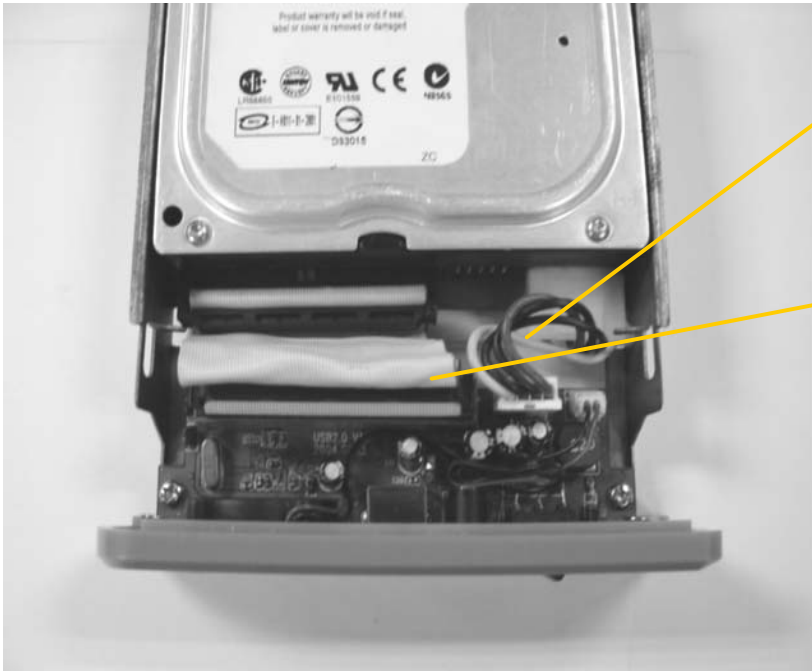
Installing a 3.5” hard drive in to the 3.5” enclosure

Step 1:



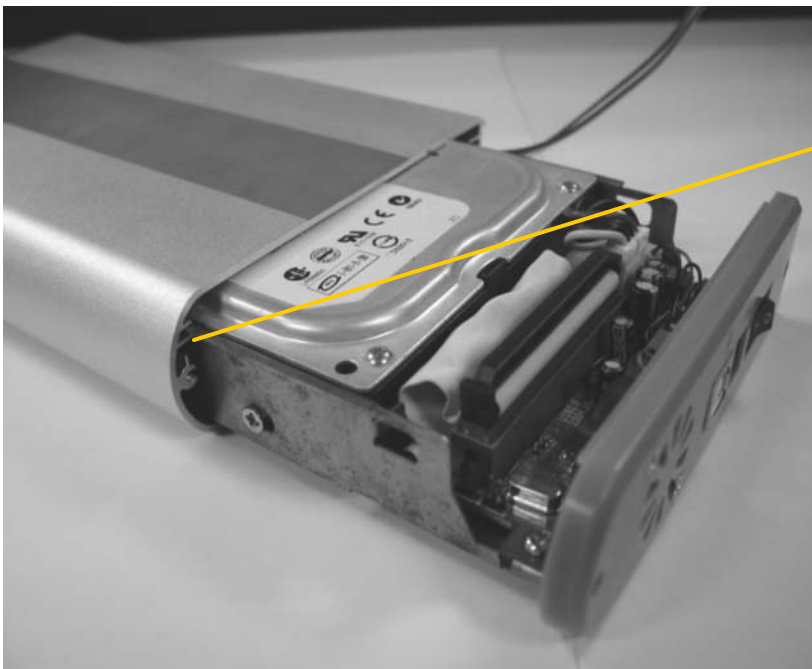
Slowly remove
the rear cover

Step 2:



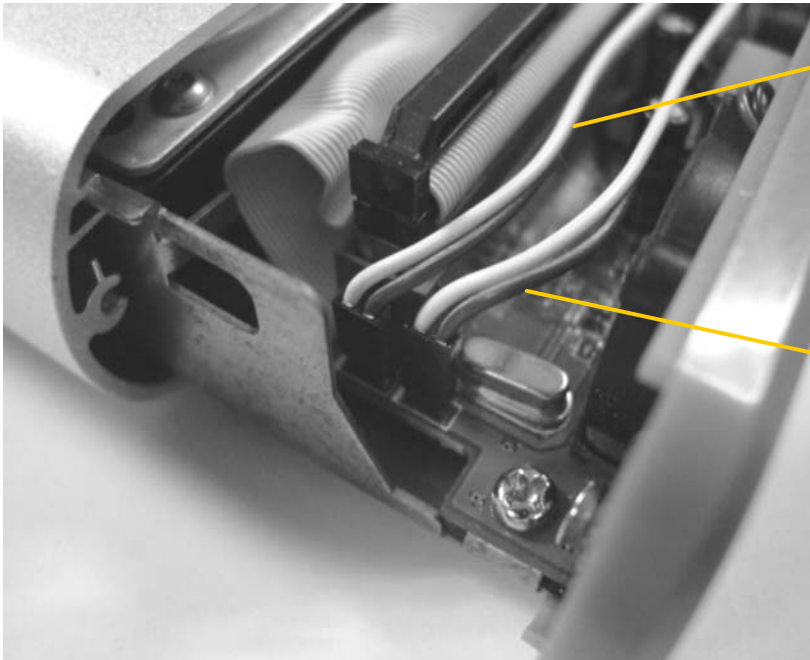
- 1) Connect the power connector
- 2) Connect the IDE connector
- 3) Secure the hard drive with screws provided

Step 3:



Slide in the hard drive into casing. Make sure the rails align to slots

Step 4:



1) Connect the "Green" LED connector to D2 location

2) Connect the "Red" LED connector to D1 location

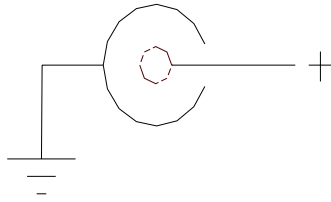
Step 5:



Make sure the wires are properly aligned when closing the rear cover. Secure the rear cover with the screws provided.

Connect the appropriate cables to the 3.5" enclosure. Make sure the polarity of the AC-DC 12VDC power supply is correct. If the

polarity is not correct, you can damage the electronic section of the 3.5" enclosure.



Notice: For all existing storage devices such as 3.5" IDE hard drives, please make sure the JUMPER setting set to MASTER before installing into 3.5" USB 2.0 Enclosure. (However, for certain hard drives, you may need to set the jumper as "Cable Select".)

SOFTWARE INSTALLATION

Note: This software installation section assumes that your computer system already has USB 2.0 ports available for connecting the 3.5" enclosure and all the appropriate drivers have been property installed.

A. Installing USB 2.0 driver

For Windows 98/98SE

Windows 98/98SE does not include a USB Mass Storage driver so you need to install Windows 98/98SE driver. The driver is located in **\Prolific\PL2506_2507** directory of the

Driver CD.

For Windows ME, 2000 & XP

No need for additional drivers because Microsoft already provides an USB Mass Storage driver with Windows ME, 2000& XP operating system. Once you connect the 3.5” enclosure to the USB 2.0 port on your system, Windows should automatically detect the device and install the appropriate drivers.

All trademarks referenced and mentioned in this manual are the registered trademark of their respective owners.

P/N: 5019750350101