

TERRATEK

12V Li-ion Torch Light T12VFL



User Manual — Please read and retain for future reference.

IMPORTANT: Read all instructions before use.

Contents

Parts List

Technical Information

Safety Instructions

Using your light

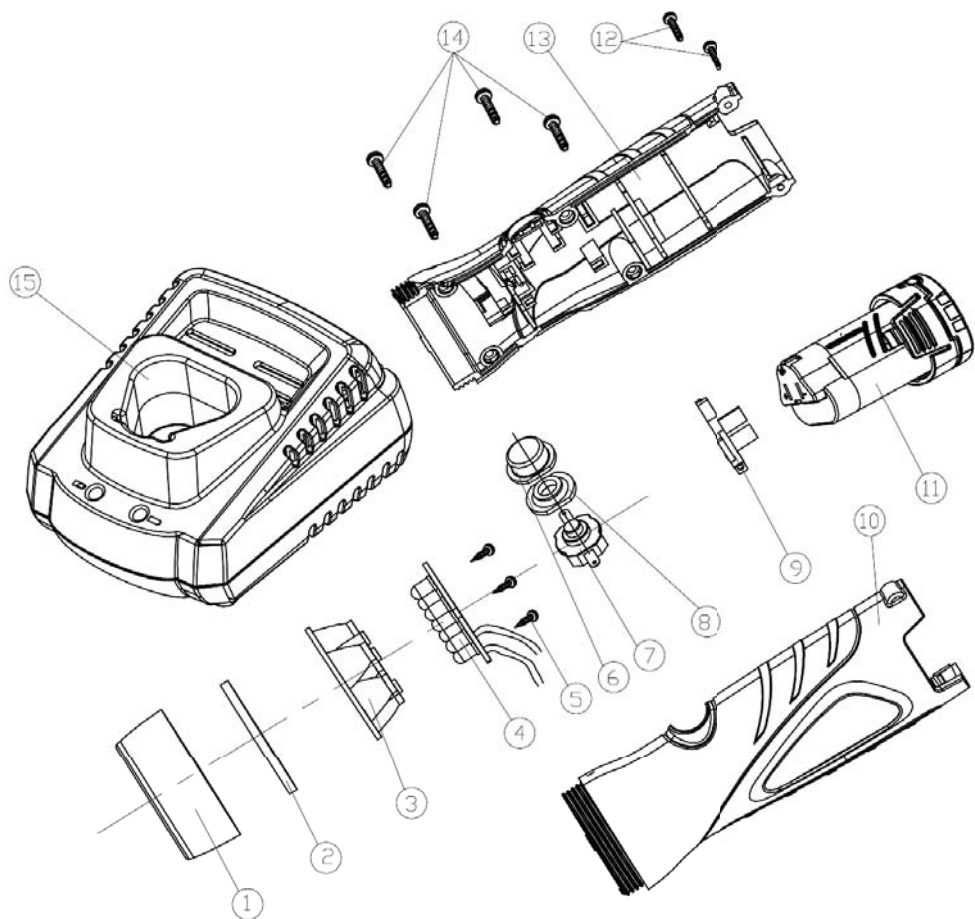
Maintenance

Warranty

Parts List

No.	Description
1	Cover
2	Lens
3	Reflector for LED
4	PCB for LED
5	Cross pan head screw
6	Switch button
7	Switch
8	Switch button holder
9	Host connector holder
10	Left cover
11	battery pack
12	Cross pan heat screw
13	Right cover
14	Cross pan head screw
15	12V fast charger

Exploded Assembly Diagram



NOTICE: Actual product may vary from pictures shown.



fig.1

- 1. LED bulbs
- 2. Switch Button
- 3. Battery Pack
- 4. Charger



fig.2

Technical Information

Model:	T12VFL
Rated Voltage:	12V DC
Bulb type:	LED
Battery Type:	1300 mAh Li-ion

Charger

Charging time:	1 hour
Input:	100-240V AC, 50 – 60 Hz, 27W
Output:	12.6V DC, 1500mA Max



Read this entire manual before using this product. Failure to do so can result in serious injury. Save this manual for future reference.

Copyright© 2013 by ACL Group (Intl) Ltd. All rights reserved. This manual or any artwork contained herein must not be reproduced in any shape or form without the express written consent of ACL Group (Intl) Ltd. Diagrams within this manual may not be drawn proportionally. Due to continuing improvements, actual product may differ slightly from the product described herein.

Read and Keep This Manual

Please read carefully all instructions within this manual. Failure to follow all safety warnings can result in serious personal injury. The term “Power Tool” in all of the following warnings refers to your mains operated (corded) or battery operated (cordless) power tool.

Important SAFETY Information



This symbol is to warn you of potential personal injury hazards. Please read carefully the notes along side this warning to avoid possible injury or death.

General Safety Rules



WARNING! Read all instructions. Failure to follow all instructions listed below may result in electric shock, fire and/or serious injury. The term “power tool” in all of the warnings listed refers to corded or cordless power tools.

Work area safety

Keep work area clean and well lit. **Cluttered or dark areas invite accidents.**

Do not operate power tools in explosive atmospheres, such as in the presence of flammable liquids, gases or dust. Power tools create sparks which may ignite the dust or fumes.

Keep children and bystanders away while operating a power tool. Distractions can cause you to lose control.

Electrical safety

Before use, ensure that the power outlet you are using matches the plug on your power tool and that the voltage of the outlet matches that of your power tool.

Only use grounded extension cords with power tools fitted with 3 pin plugs and if using outdoors ensure any extension cord is suitable for outdoor use.

Always try to avoid body contact with grounded surfaces, such as radiators, cooking ranges and any other fixed appliance with metal surfaces.

Do not expose your power tool to wet or damp conditions and NEVER use in rain.

Check regularly the power cord of your machine and any extension cord that you are using for damage.

Do not carry or pull the machine with the power cord.

Ensure the cord is clear from hot surfaces, oil or sharp objects.

Safety rules for battery worklights

Under extreme usage or temperature conditions, battery leakage may occur. If liquid comes in contact with your skin, wash immediately with soap and water. If liquid gets in your eyes, flush them with clean water for at least 10 minutes, then seek immediate medical attention.

Batteries can explode in the presence of a source of ignition, such as a pilot light.

To reduce the risk of serious personal injury, never use any cordless product in the presence of open flame. An exploded battery can propel debris and chemicals and cause serious injuries.

Do not crush, drop or damage battery pack. Do not use a battery pack or charger that has been dropped or received a sharp blow. A damaged battery is subject to explosion. Properly dispose of a damaged battery immediately. Failure to heed this warning can result in serious personal injury.

Read all the instructions before using the worklight

To reduce the risk of injury, close supervision is necessary when used near children. Do not use outdoors.

To reduce the risk of electrical shock, do not put flashlight or charger in water or other liquid.

Do not place or store appliance where it can fall or be pulled into a tub or sink.

Use only the charger supplied by the manufacturer to recharge.

Use only recommended battery pack. Using another battery pack will cause damage to your worklight and could possibly explode, cause a fire, or personal injury. For use with 12v Li-ion batteries.

Remove battery pack from worklight before replacing bulb or performing any maintenance or cleaning. Replace bulb with same type LED.

Do not disassemble the worklight.

Do not place worklight or battery pack near fire or heat. They may explode.

Do not dispose of a worn out battery pack by incinerating.

Do not incinerate the battery. The battery may explode in fire.

Do not operate worklight or charger near flammable liquids or in gaseous or explosive atmospheres. Internal sparks may ignite fumes.

Do not store your worklight in a damp or wet location.

Do not store in locations where the temperature is less than below 10°C (50°F) or above 40°C (104°F).

Do not store in outside sheds or in vehicles.

Do not permit children to use worklight unsupervised. It is not a toy. The temperature of the bulb will become hot after being on for only a short period of time. This hot temperature can cause burn injury if touched and can create sufficient heat to melt some fabrics.

If wrapped or comes in contact with fabrics, the worklight lens can produce sufficient heat to melt some fabrics. To avoid serious personal injury, never allow the worklight lens to come in contact with anything.

Keep light dry, clean, and free from oil and grease. Always use a clean cloth when cleaning. Never use petroleum-based products, or any strong solvent to clean the worklight.

Don't expose worklight to rain. Water entering a power tool will increase the risk of electric shock or malfunction.

Do not overreach. Keep proper footing and balance at all times. Do not use on a ladder or unstable surfaces.

Symbols

IMPORTANT: Some of the following symbols may be used on your tool.

V.....volts

A.....amperes

Hz.....hertz


~.....alternating current

.../m.....revolutions per minute

class II construction (double insulated)

Kg.....kilograms

n_0No load speed

Conforms to European Harmonised New Approach Directives.

DCDirect Current

Worklight use and care

This product is for household use only.

Store worklight out of the reach of children and other unqualified persons.

Worklights are dangerous in the hands of untrained users.

Let the worklight cool for several minutes before changing the bulb.

Do not use or permit use of worklight in bed or sleeping bags. This worklight lens can melt fabric and a burn injury could result.

Battery use and care

A battery operated tool with integral batteries or a separate battery pack must be recharged only with the specified charger for the battery.

A charger that may be suitable for one type of battery may create a risk of fire when used with another battery.

Use battery operated tool only with specifically designed battery pack.

Use of any other batteries may create a risk of fire.

Hold the tool by its handle only. Because the tool operates by battery power, be aware of the fact that it can begin to operate at any time.

Charging the battery pack (Fig. 2)

Note: Newly purchased Batteries are not fully charged and must be charged before using in your cordless tool(s).

1. Plug the battery charger into the proper AC voltage source.
2. Insert the battery pack so that the ribs on the battery pack slide into the grooves on the battery charger. Insert the cartridge fully into the charger. (Fig.2)
3. When the battery pack is inserted, the Red LED will light, indicating the charger has started the charging cycle. A Green light will indicate the battery is completely charged and should be removed from the charger. (Fig.2)
4. After charging, unplug the charger from the power source.
5. Other tips for extending Battery life: Do not store batteries completely discharged. Charge them fully before storing.

Overload Protection

The power cutter is fitted with an overload/overheat protection device. When the tool is forced to work at an excessive load, the protection device will be activated automatically to disconnect the power supply. If this occurs, switch off the tool and switch on again to resume the work, make sure to apply only suitable workload to the tool. When the tool works under heavy load for a long period of time, the temperature of the tool or battery pack will increase significantly. The protection device will be activated at a preset temperature to protect both the tool and the battery. If this occurs, switch off the tool and wait until it cools down to ambient temperature and resume work.

Note: when the voltage of battery pack is dropped to 7.5V, the protection device will also be activated. In this case, remove the battery pack and fully charge it before reuse.

WARNING: Improper use of the battery or battery charger can lead to serious injury.

To avoid these injuries:

- A) **NEVER** disassemble the battery.
- B) **NEVER** incinerate the battery, even if it is damaged or is completely worn out. The battery can explode in a fire.
- C) **NEVER** short-circuit the battery.
- D) **NEVER** insert any objects into the battery charger's air vents. Electric shock or damage to the battery charger may result.
- E) **NEVER** charge outdoors. Keep the battery away from direct sunlight and use only where there is low humidity and good ventilation.
- F) **NEVER** charge when the temperature is below 32°F (0°C) or above 104°F (40°C).
- G) **NEVER** connect two battery chargers together.
- H) **NEVER** insert foreign objects into the hole for the battery or the battery charger.
- I) **NEVER** use a booster transformer when charging.
- J) **NEVER** use an engine generator or DC power to charge.
- K) **NEVER** store the battery or battery charger in places where the temperature may reach or exceed 104°F (40°C).
- L) **ALWAYS** operate charger on standard household electrical power (230 volts). Using the charger on any other voltage may overheat and damage the charger.
- M) **ALWAYS** wait at least 15 minutes between charges to avoid overheating the charger.
- N) **ALWAYS** disconnect the power cord from its receptacle when the charger is not in use.

ADDITIONAL PRECAUTIONS FOR CHARGER & BATTERY PACK

1. Do not charge battery pack when temperature is below 10°C (50°F) or above 40°C (104°F).
2. Do not attempt to use a step-up transformer, an engine generator or DC power receptacle.
3. Do not allow anything to cover or clog the charger vents.
4. Always protect the battery terminals when the battery pack is not used.
5. Do not short the battery pack.
6. Do not touch the terminals with any conductive material.
7. Avoid storing battery cartridge in a container with other metal objects such as nails, coins, etc.
8. Do not expose battery pack to water or rain.

Warning! A battery short can cause a large current flow, overheating, possible burns and even a breakdown.

9. Do not store the tool and Battery pack in locations where the temperature may reach or exceed 50°C (122°F).

10. Do not incinerate the Battery pack even if it is severely damaged or is completely worn out. The battery pack can explode in a fire.

11. Be careful not to drop, shake or strike battery.

12. Do not charge inside a box or container of any kind. The battery must be placed in a ventilated area during charging.

Unpacking

Carefully remove the product and any accessories from the box. Make sure that all items listed in the packing list are included.

Package contents

A) 12V torch light

B) 1 hour fast Charger

C) User manual

Functional Description (Fig.1)

WARNING: Remove battery pack before making any assembly, adjustments or changing accessories. Such preventive safety measures reduce the risk of starting the tool accidentally.

Installing or removing battery pack.

1. To remove the battery pack, withdraw it from the tool while depressing the tabs (Fig.2) on both sides of the battery pack.

2. To insert the battery pack, align the ribs on the top of the battery with the grooves in the housing and slide it into place. Always insert it all the way until it locks in place with a little click. Lightly pull on the battery pack to ensure it is locked into place and will not accidentally fall out of the tool, causing an injury.

3. Do not use force when inserting the battery pack. If the battery does not slide in easily, it is not being inserted correctly.

Operation

Switching On and Off

1. To turn on the torch light, depress the switch button. (Fig.1-2)
2. Turn off, depress the switch button again.

Note: when the voltage of battery pack is dropped to 7.5V, the protection device built-in the tool will be activated. In this case, remove the battery pack and fully charge it before reuse.

LED Capacity indicator: (Fig.2)

All three LED's are on > 90%

Two LED's are on > 60%

One LED is on ≤ 30%

Once only the one LED is lit, the battery must be re-charged.

Changing the light bulb

1. Remove the lens cover by rotating the cover counter-clockwise.
2. Gently pull out the burned bulb and replace with a new one.
3. Replace the lens cover.

Disposal of the exhausted battery

WARNING: Do not dispose of the exhausted battery. The battery must explode if it is incinerated. The product that you have purchased contains a rechargeable battery. The battery is recyclable. At the end of its useful life, under various state and local laws, it may be illegal to dispose of this battery into the municipal waste stream. Check with your local solid waste officials for details in your area for recycling options or proper disposal.

Disposal

Power tools, accessories and packaging should be sorted for environmentally-friendly recycling.

Only for EC countries:



Do not dispose of power tools into household waste!

According to the European Directive 2002/96/EC on waste electrical and electronic equipment and its incorporation into national right, products that are no longer suitable for use must be separately collected and sent for recovery in an environmentally-friendly manner.

Battery packs/batteries:



Li-Ion:

Do not dispose of battery packs/batteries into household waste, water or fire. Battery packs/batteries must be collected, recycled or disposed of in an environmentally-friendly way.

Only for EC countries:

Defective or dead batteries must be recycled according to the directive 2006/66/EC.

Maintenance

Use only a dry, soft cloth for wiping the unit. Do not use a damp cloth, thinner, or other volatile solvents for cleaning.

Accessories

CAUTION: Use only accessories or attachments recommended for use with your Terratek tool specified in this manual. The use of any other accessories or attachments might present a risk of injury to persons. Only use accessory or attachment for its stated purpose.

Declaration of Conformity

We ACL Group (Intl.) Ltd, England DN6 8LZ declare that the torch light has been manufactured according to our full quality assurance procedures.

The declaration is to certify that it conforms to CE, EMC, LVD and RoHS directives:

EN55015/A2:2009

EN60547:2009

All provisions of Annex 1 of Council Directive 2004/108/EC – EMC directive

EN60598-1/A11: 2019

EN60589-2-4: 1997

EN62471: 2008

All provisions of Annex 1 of Council Directive 2006/95/EC – Low Voltage Directive

RoHS 2011/65/EU



A handwritten signature in black ink, appearing to be 'Alan Garnett'.

Mr. Alan Garnett, UK QA Manager

Environmental Protection

RECYCLING: WASTE ELECTRICAL PRODUCTS SHOULD NOT BE DISPOSED OF WITH HOUSEHOLD WASTE. PLEASE RECYCLE WHERE FACILITIES EXIST. CHECK WITH YOUR LOCAL AUTHORITY OR RETAILER FOR RECYCLING ADVICE.



Please read the following carefully

ACL Group (Intl) Ltd. and/or its distributor has provided the parts list and assembly diagram as a reference tool only. Neither ACL Group (Intl) Ltd. or its distributor makes any representation or warranty of any kind to the buyer that he or she is qualified to do any repairs or replace any parts of this product. ACL Group (Intl) Ltd. and its distributor expressly state that all repairs or parts replacement should be done by certified or licensed technicians. The buyer assumes all risk and liability arising out of his or her repairs or parts replacement to the original product.

12 Months Limited Warranty

If within 12 months from the date of purchase you experience any problems with your product, please return the product to its distributor/dealer for repair or replacement. This warranty **DOES NOT COVER** normal wear, or any damage as a result of accidents, misuse, abuse or negligence.

ACL Group (Intl) Ltd
Doncaster, England
Email: info@terratekintl.com
www.terratekintl.com