

AirTamer®

Ultra High Efficiency Air Purifier Instruction Manual



FilterStream®
Company
Advanced Cleaning Appliances™

A700

Table of Contents

About Your AirTamer®	1
Important Safeguards	2
Important Safety Instructions	2
FCC Information	4
Features and Controls	5
Main Unit	5
Set-Up & Operation	7
Unit Set-Up	7
Power On/Off	8
Fan Speed	8
Auto Off/Delay On Timer	9
Using the Auto Off Timer	9
Using the Delay On Timer	9
Your AirTamer® A700 Filter	10
Change Filter Light	11
Resetting the Change Filter Light	12
Replacing the Filter	13
Using Alternative Non-AirTamer® Air Filters	14
The AirTamer® Aroma System	15
How To Use	15
About Dr. Rachel Herz	16
LED Brightness Control	17
Troubleshooting Guide	18
Questions & Answers	20
1 Year Limited Warranty	21

AirTamer®

About Your AirTamer®

Thank you for purchasing the AirTamer® A700. FilterStream is a leader in bringing innovative cleaning appliances to your life. We are dedicated to making your life cleaner and healthier with creative solutions that combine superior quality with the very latest technology.

The AirTamer® A700 provides fresher, cleaner air for you to breathe and saves you money at the same time. In fact, the AirTamer® A700 has the highest cleaning effectiveness and highest energy efficiency of any other pleated filter type air purifier in the world*.

With a revolutionary 6-fan system, your AirTamer® removes common air pollutants quickly. Because it's whisper-quiet, AirTamer® can be placed in any room in your home or office – even in your bedroom or nursery.

Your AirTamer® has been thoroughly tested to be certain it meets our own exacting quality control standards. Please take a few moments to review the following important information before using it.

* Among air purifiers without ion generators.

Important Safeguards

Caution

- To reduce the risk of electric shock, do not remove the cover or back panel. There are no user-serviceable parts inside the unit.
- To reduce the risk of fire or electric shock, do not expose this unit to rain or moisture.



The lightning flash with arrowhead symbol with an equilateral triangle is intended to alert the user to the presence of un-insulated “dangerous voltage” within the unit’s enclosure that may be of sufficient magnitude to constitute a risk of electric shock.



The exclamation point within an equilateral triangle is intended to alert the user to the presence of important operating and maintenance (servicing) instructions in the literature accompanying the unit.

Important Safety Instructions

All the safety and operating instructions should be read, adhered to and followed before operating the unit.

Danger

To reduce the risk of electric shock, burns, fire or injury:

- Always unplug the unit from the electrical outlet immediately after using and before cleaning.
- Do not use while bathing or in a shower.
- Do not place or store unit where it can fall or be pulled into a tub or sink.
- Do not immerse air purifier unit in water or other liquid.
- Do not reach for air purifier unit that has fallen into water. Unplug it immediately.
- Care should be taken so that objects do not fall and liquids are not spilled into enclosures.
- Do not attempt to put fingers into moving fan blades.
- Do not insert objects through either of the exit or intake grills.

Warning

- Remove and discard all packing materials (bags, cardboard, foam, etc.) prior to operating this unit.
- Close supervision is necessary when this unit is operated near children. Do not allow children to play with this unit. This unit is not a toy.
- Use this unit only for its intended use as described in this manual.
- Unplug this unit during lightning storms or when unused for long periods of time.
- Always unplug this unit before moving, cleaning or servicing.
- Always use this unit on a level, flat surface.
- Do not operate this unit on a table or desk. It is recommended for floor use only.
- Protect the power cord from being walked on, or pinched.
- Keep the power cord away from heated surfaces.
- Do not use this unit in high moisture environments (e.g. bathrooms, laundry rooms, etc.).
- The unit should be situated away from heat sources such as; direct sunlight, radiators, heat registers, stoves or other heat-producing appliances.
- Never block the air openings of the unit with any materials such as clothing, plastic bags or papers, or place it on a soft surface, such as a bed or sofa, where the air openings may be blocked. Keep the air openings free of lint and hair.
- Do not overload the electrical outlet.
Use only the power source and cord included with the unit.
- Do not carry this unit by its cord or use the cord as a handle.
- Never operate this unit if it has a damaged cord or plug, if it is not working properly, if it has been dropped or damaged, or dropped into water.
- To avoid the risk of electric shock, do not disassemble or attempt to repair the unit. Incorrect repair can cause risk of electric shock or injury to persons when unit is used.
- To reduce the risk of fire or electric shock, do not use this unit with any solid-state speed control device.
- Do not operate where aerosol units are being used or where oxygen is being administered. Do not operate this unit in oxygen rich environments.

- Keep away from gas-powered stoves and ovens, and do not operate this unit in areas where flammable or combustible units or vapors may be present.
- This unit is intended for household use only and **NOT** for commercial or industrial use.
- Do not use this unit outdoors. Use for indoor operation only.
- Use correct electrical supply voltage as indicated on the bottom label of the unit.
- Turn the unit off before unplugging from an electrical outlet.
- Do not allow children to play with any plastic bags that accompany this unit. Plastic bags are a hazard to young children.



WARNING!

TO REDUCE THE RISK OF FIRE OR ELECTRIC SHOCK, DO NOT USE THIS FAN WITH ANY SOLID-STATE SPEED CONTROL DEVICE

FCC Information

This unit complies with Part 18 of the FCC rules. Operation is subject to the following two conditions:

1. This device may not cause harmful interference; and
2. This device must accept any interference received, including interference that may cause undesired operation.

Save These Instructions

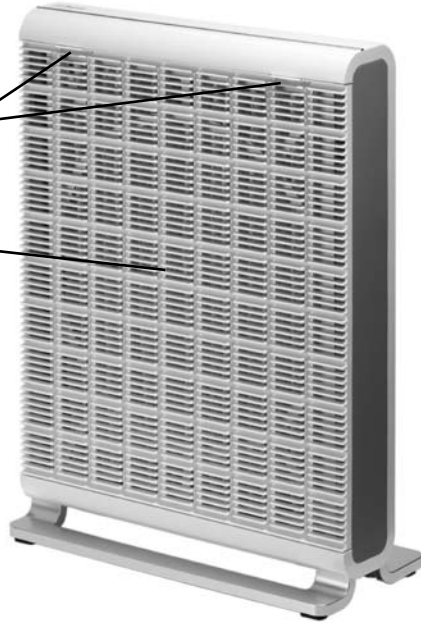
Features and Controls

Main Unit

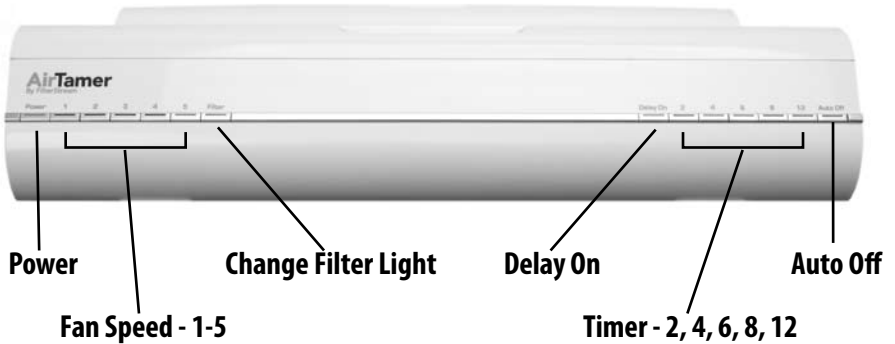
Front

Air Exit Grill Tabs

Air Exit Grill



Control Panel



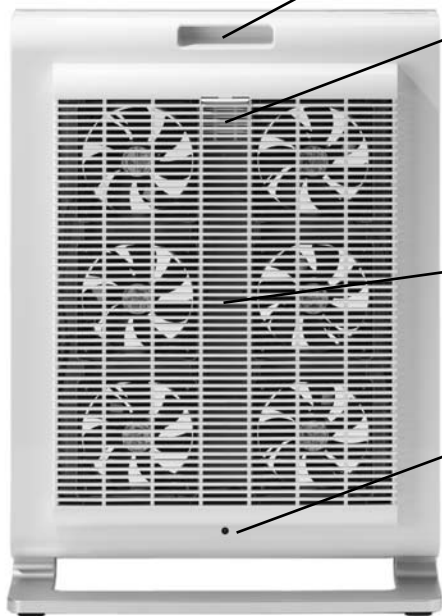
Power Cord



Features and Controls

Main Unit

Rear



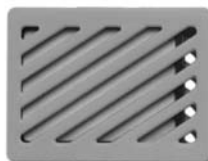
Carry Handle

Aroma Cartridge Door

Air Intake Grill

Power Jack

Aroma Cartridges



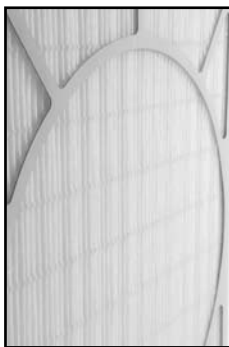
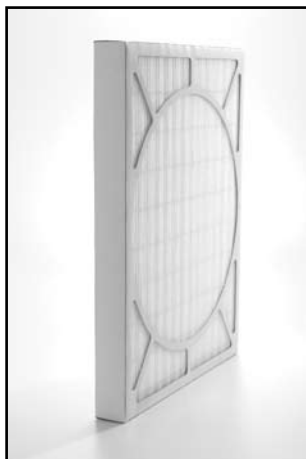
Refreshing Orange



Energizing Grapefruit



Relaxing Lavender



**AirTamer Ultra
High Performance
Pleated Filter
(Model AF2-1620M)**

Set-Up & Operation

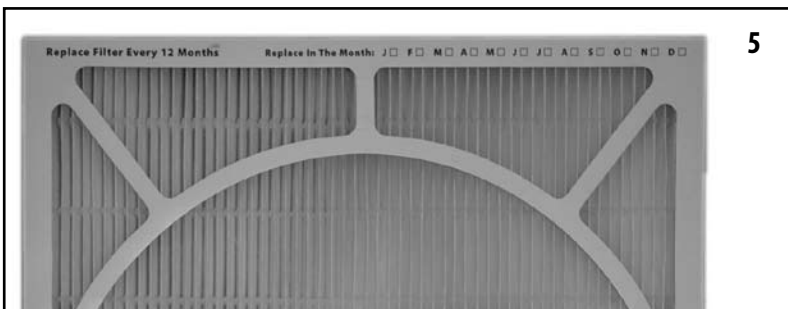
Unit Set-Up

1. Unpack the unit and make sure that any and all tape and protective wrap is removed from the unit.

NOTE:

YOUR AIRTAMER® IS SHIPPED WITH A CERTIFIED AIRTAMER® AIR FILTER INSTALLED IN THE UNIT. PLEASE REMOVE THE AIR FILTER PLASTIC WRAPPING BEFORE FIRST USE.

2. Remove the **AIR EXIT GRILL** by pushing down on the **AIR EXIT GRILL TABS** (2a) and pulling the **AIR EXIT GRILL** away from the unit (2b).
3. Remove the **AIR FILTER** by firmly gripping the sides of the **AIR FILTER** and pulling the **AIR FILTER** out of the unit.
4. Remove the plastic wrap protecting the filter.
5. Mark the suggested month of **AIR FILTER** replacement on the **AIR FILTER** by checking off the appropriate month (e.g. If it is suggested that the **AIR FILTER** be replaced in 12 months and you install the **AIR FILTER** on January 1st, put a check in the box beside the letter representing the month to replace – in this case January, for the next January).



6. Insert the **AIR FILTER** by placing the bottom of the **AIR FILTER** inside your AirTamer and pushing it past the large front rubber tab. Then push the top of the **AIR FILTER** past the large front rubber tab at the top of the unit.



NOTE:

MAKE SURE THAT THE AIR FLOW ARROWS ON THE FILTER FACE TOWARDS THE FRONT OF THE UNIT.

7. Replace the **AIR EXIT GRILL**.
8. Place the unit on a level floor, keeping it at least 4" (10.2 cm) away from any wall, furniture or appliances. Position the unit so that the clean air will flow to your desired area (clean air flows from the front of the unit). Ensure that the **AIR INTAKE GRILL** and **AIR EXIT GRILL** are not blocked.



Power On/Off

1. The **POWER CORD** is shipped as two pieces. Connect the two pieces, plug the end with wall outlet prongs into an electrical outlet, and the round end into the **POWER JACK** located at the back of your AirTamer®.
2. Press the **POWER BUTTON** to turn the unit on. The **POWER BUTTON** will illuminate when on.



Fan Speed

Your unit will initially start at the highest speed – Speed 5. Select your desired fan speed by pressing the corresponding **SPEED BUTTON**. Your AirTamer® has five (5) **SPEED SETTINGS** 1, 2, 3, 4, and 5.

SPEED 5

will provide the highest rate of cleaning performance, but more noise.

SPEED 1

will provide the least amount of noise, but a slower rate of cleaning. Normally, the lower speeds are ideal for sleep or relaxation environments.

Auto Off/Delay On Timer

You can run your AirTamer® continuously, or set it to **TURN OFF** automatically in 2, 4, 6, 8 or 12 hours. You can also set your AirTamer® to **TURN ON** automatically in 2, 4, 6, 8 or 12 hours. Please see the following directions.

Using the Auto Off Timer

The **AUTO OFF** feature automatically shuts your unit off after 2, 4, 6, 8, or 12 hours. To use the **AUTO OFF** feature, follow these steps:

1. Press the **POWER BUTTON** to turn the unit on if not on already.
2. Press the **AUTO OFF BUTTON**. The **AUTO OFF BUTTON** and **2 TIMER BUTTON** will illuminate.
3. Press the **TIMER BUTTON** for your selected delay on time: 2, 4, 6, 8 or 12 hours later.
4. Select your speed level.

NOTE:

YOU CAN TURN THE AUTO OFF TIMER ON IF YOUR AIRTAMER® IS OFF BY PRESSING THE AUTO OFF BUTTON. IN THE CONTINUOUS OPERATION MODE, NO AUTO OFF BUTTONS ARE ILLUMINATED.

Using the Delay On Timer

The **DELAY ON** feature automatically turns your unit on in 2, 4, 6, 8, or 12 hours. To use the **DELAY ON** feature:

1. Press the **DELAY ON BUTTON**. The **DELAY ON BUTTON** and **2 TIMER BUTTON** will illuminate.
2. Press the **TIMER BUTTON** for your selected delay on time: 2, 4, 6, 8 or 12 hours later.
3. Select your speed level that the unit will turn on to when your selected **DELAY ON** time has been reached.

NOTE:

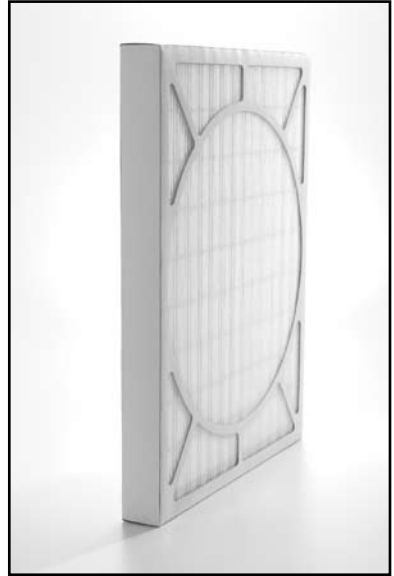
YOU CAN TURN THE DELAY ON TIMER ON IF YOUR AIRTAMER® IS OFF BY PRESSING THE DELAY ON BUTTON. IN THE CONTINUOUS OPERATION MODE, NO DELAY ON BUTTONS ARE ILLUMINATED.

Your AirTamer® A700 Filter

Your AirTamer A700 includes one (1) **ULTRA HIGH PERFORMANCE PLEATED AIR FILTER.**

It exhibits the following performance characteristics:

- Ultra high density filter material is up to 99.9% effective at capturing particles like pollen, mold spores and dust mite debris.
- Also captures dust, pet dander, bacteria, smoke, smog, particles that can carry odors, and particles that can carry viruses.
- Twelve (12) month filter life.
- MERV 16 rating producing an AHAM certified CADR of 275 for pollen, 285 for dust and 260 for smoke. This equates to an AHAM certified suggested room size of 403 square feet.
- Assembled in Mexico with USA materials.



Change Filter Light

Your AirTamer® green **CLEAN FILTER LIGHT** will turn orange when it has reached six (6) months of running time. The AF2-1620M Ultra High Performance Pleated Filter included with your A700 AirTamer® has an extra long life of twelve (12) months.

It may be necessary to replace the **FILTER** in less than twelve (12) months if your air quality is poor. Normally, a dirty filter is gray or near black.

NOTE:

IF YOUR AIRTAMER® RUNS FOR 2 OR MORE WEEKS AFTER THE ORANGE CLEAN FILTER LIGHT HAS ILLUMINATED AND YOU HAVE NOT CHANGED THE FILTER, THE CLEAN FILTER LIGHT WILL BEGIN "PULSING" TO REMIND YOU.

IMPORTANT:

There are different grades and types of AirTamer® **AIR FILTERS** and the estimated replacement time varies from one type to another.

Please look at your **AIR FILTER** frame for the recommended time to replace. The following is a quick summary:

Model	Replace After
AF2-1620E AirTamer® High Performance Electrostatic Pleated Filter	6 Months (Normal Use)
AF2-1620M AirTamer® Ultra High Performance Pleated Filter	12 Months (Normal Use)
AF-1620AM AirTamer® Germ-Odor-Virus Protection Air Filter	3 Months (Normal Use)

If you are using an **AIR FILTER** with a twelve (12) month life, like the AF2-1620M Ultra High Performance Pleated Filter included with your A700 AirTamer®, simply use the **AIR FILTER** for two (2) – **CHANGE FILTER LIGHT** cycles (i.e. use the **FILTER** for six (6) months, reset the **CHANGE FILTER LIGHT**, then use the **FILTER** for another six (6) months). You can mark the date to change the **FILTER** by checking off the corresponding box on the **FILTER FRAME**.

NOTE:

FOR FILTERS WITH A 3 MONTH LIFE, MARK THE DATE TO CHANGE THE FILTER BY CHECKING THE CORRESPONDING BOX ON THE FILTER FRAME.

Resetting the Change Filter Light

To reset the orange **CHANGE FILTER LIGHT** to the beginning of its 6 month timer:

1. Press and hold the **FILTER BUTTON** for three (3) seconds.
2. All of the lights on the unit will flash once and the filter light will be reset.
It will change back to orange after six (6) months of use.



Replacing the Filter

Please follow these steps to replace your AirTamer® **AIR FILTER**.

1. Turn the AirTamer® off by pressing the **POWER BUTTON** and unplugging the unit from the electrical outlet.
2. Remove the **AIR EXIT GRILL** by pushing down on the **AIR EXIT GRILL TABS** (2a) and pulling the **AIR EXIT GRILL** (2b) away from the unit.
3. Remove the **AIR FILTER** by firmly gripping the sides of the **AIR FILTER** and pulling the **AIR FILTER** out of the unit.
4. Mark the suggested month of **AIR FILTER** replacement on the new **AIR FILTER** by checking off the appropriate month (e.g. If it is suggested that the **AIR FILTER** be replaced in 12 months and you install the **AIR FILTER** on January 1st, put a check in the box beside the letter representing the month to replace – in this case January, for the next January).
5. Insert the new **AIR FILTER** by placing the bottom of the **AIR FILTER** inside your AirTamer® and pushing it past the large front rubber tab. Then push the top of the **AIR FILTER** past the large front rubber tab at the top of the unit.

NOTE:

MAKE SURE THAT THE AIR FLOW ARROWS FACE TOWARDS THE FRONT OF THE UNIT.

6. Replace the **AIR EXIT GRILL**.
7. Press and hold down the **CHANGE FILTER LIGHT BUTTON** for three (3) seconds to reset the **CHANGE FILTER** memory.



NOTE:

THE CHANGE FILTER LIGHT NEEDS TO BE RESET WHENEVER YOU REPLACE YOUR AIR FILTER. THIS WILL ALLOW YOUR AIRTAMER® TO KEEP TRACK OF ANOTHER 6 MONTH PERIOD OF USE.

8. All lights on your AirTamer® will flash and the **CHANGE FILTER LIGHT** will change to green to indicate that the **CHANGE FILTER LIGHT** has been reset.

Using Alternative Non-AirTamer® Air Filters

We recommend certified AirTamer® **AIR FILTERS** for best performance. You may alternatively use any 16" x 20" (39.8 cm x 50 cm) filter (even furnace fan filters) for your extra convenience.

The unique AirTamer® Flexible Filter System allows you to use 2" (5.08 cm) or thinner filters. You may even stack two thinner filters together so long as they do not exceed 2" (5.08 cm) combined thickness.

NOTE:

PERFORMANCE OF ALTERNATIVE FILTERS DO VARY WIDELY. AIRTAMER® CERTIFIED FILTERS HAVE BEEN CAREFULLY DEVELOPED AND TESTED FOR HIGH EFFICIENCY AIR CLEANING PERFORMANCE IN YOUR AIRTAMER®. WE CAN NOT VERIFY THE PERFORMANCE OF ALTERNATIVE FILTERS.

The AirTamer® Aroma System

Your AirTamer® includes a unique aroma system that adds pleasant, therapeutic fragrances to your air while you are cleaning the air!

Your AirTamer includes three (3) starter **AROMA CARTRIDGES** that were selected and developed by world renowned aroma expert Dr. Rachel Herz. Each fragrance has been clinically proven to help achieve the following:

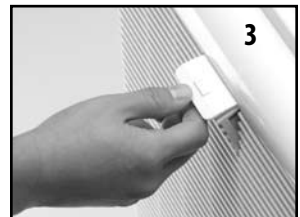
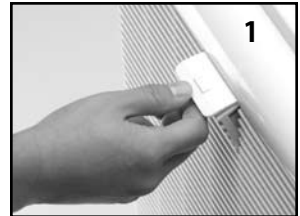
REFRESHING ORANGE – uplifting, great for daytime use

ENERGIZING GRAPEFRUIT – invigorating, great for daytime use

RELAXING LAVENDER – relaxing, great for nighttime use

How To Use

1. Open the **AROMA CARTRIDGE COMPARTMENT DOOR** located at the back of the unit.
2. Insert one **AROMA CARTRIDGE** into the **AROMA CARTRIDGE COMPARTMENT**.
3. Replace the **AROMA CARTRIDGE COMPARTMENT DOOR**.



NOTE:

IF YOU USE THE AIRTAMER® GERM-ODOR-VIRUS PROTECTION AIR FILTER (MODEL AF-1620AM), IT WILL REDUCE AROMA DISPERSION FROM THE AROMA CARTRIDGES.

About Dr. Rachel Herz

Rachel S. Herz, Ph.D., Expert in the Psychology of Smell.

Visiting Professor, Department of Psychiatry and Human Behavior,
Brown University Medical School

Dr. Rachel Herz, PhD has been hailed as the world's leading expert on the psychology of smell. She was acclaimed as a pioneer in the psychology of olfaction in a special Scientific American profile article in November 1999, and an example of her memory research toured in the 5-year traveling exhibit "Brain: The world inside your head," which opened at the Smithsonian Institution in 2001.

Dr. Herz has been conducting research on scent, emotion and cognition for the past 17 years and has published over 50 original research papers, and contributed numerous chapters to college textbooks and academic anthologies. Her research has shown how odor-evoked memory is unique in emotional potency compared to other memory experiences, how emotional associations can change odor perception, and how odors can be conditioned to emotions and subsequently influence motivated behavior. Her work also deals with how language can manipulate odor perception, and the role that body-odor and fragrance play in heterosexual attraction.

Dr. Herz has been recognized by her peers as a star in olfaction. In addition to receiving a number of private and federally funded grants, she has been honored with several high-profile internationally distinguished awards, including: The Ajinomoto USA Inaugural Award, and The Moskowitz-Jacobs Award for Research Excellence in the Psychophysics of Taste and Smell.

Dr. Herz is also repeatedly invited as a guest speaker to international scientific and industrial meetings, and is currently a keynote speaker in the "Distinguished Lectureship Program" for the Institute of Food Technologists.

Because of Dr. Rachel Herz's world prominence and excellent ability as a communicator she is regularly interviewed by national and international media for television, radio and print outlets including: The Discovery Channel, ABC News, The BBC, The New York Times, The New Yorker, The Independent, Time Magazine, Rolling Stone, Salon(.)com, Oprah Magazine and Cosmopolitan Magazine. Due to their popularity, Dr. Herz's TV appearances, interviews and articles have been reproduced and translated into numerous languages ranging from Hebrew to Italian to Japanese. Dr. Herz also consults for many of the world's leading multinational fragrance and flavor companies, including Proctor & Gamble, International Flavors and Fragrances, and PepsiCo.

LED Brightness Control

The brightness of the illuminated buttons on your AirTamer® can be adjusted to suit your individual preference – there are 16 available brightness levels.

To adjust the brightness, please follow these steps:

1. With the unit on, press and hold down the **POWER BUTTON**.
2. The brightness of the illuminated LED buttons will cycle through the 16 brightness options.
3. When you see the brightness level of your choice, simply release your finger from the **POWER BUTTON**. The button illumination brightness will stay at this level.

NOTE:

YOUR AIRTAMER® ARRIVES FROM THE FACTORY WITH THE LED BRIGHTNESS SET AT MEDIUM.

Troubleshooting Guide

Issue	Resolution
<p>CHANGE FILTER LIGHT is orange.</p>	<p>This may mean that it is time to replace the AIR FILTER installed in your unit. This is dependant upon which model of air filter you are using.</p> <p>Once you replace the AIR FILTER in your unit, press and hold the CHANGE FILTER LIGHT BUTTON for three (3) seconds. The lights on the unit will then flash once, and the CHANGE FILTER LIGHT BUTTON will change back to green and begin counting down another six (6) month period of time.</p>
<p>CHANGE FILTER LIGHT is pulsing orange.</p>	<p>This means that you have run the unit for two (2) weeks after the CHANGE FILTER LIGHT has changed to orange and you must replace the AIR FILTER soon (or reset the CHANGE FILTER LIGHT if you are using a 12 month filter).</p> <p>Once you replace the AIR FILTER in your unit, press and hold the CHANGE FILTER LIGHT BUTTON for three (3) seconds. The lights on the unit will then flash once, and the CHANGE FILTER LIGHT BUTTON will change back to green and begin counting down the life on your new AIR FILTER.</p>
<p>The LED lights on the AirTamer® are too bright.</p> <p>I want the lights on the unit to be off.</p>	<p>To turn the lights on the AirTamer® DOWN or OFF, press and hold the POWER button while the unit is on. The unit will then cycle through its 16 brightness levels. When you have reached your desired level of brightness, release the POWER button. The unit will stay at that brightness level until you readjust it following the same steps.</p> <p>Note:</p> <p>After pressing any button on the unit, the brightness level will go to High and then return to your chosen brightness level after four (4) seconds.</p>

Issue	Resolution
<p>Will power outages erase the CHANGE FILTER memory?</p>	<p>The CHANGE FILTER timer has been designed to remember how long your AIR FILTER has been in the unit, even if there is a power outage or if you unplug the unit to move it.</p>
<p>AirTamer® is acting erratically or there seems to be a problem with its functions</p>	<p>Reset the unit.</p> <p>If your AirTamer® is acting erratically or there seems to be a problem with any of its functions, try resetting the unit. To do so, push and hold the AUTO OFF BUTTON for five (5) seconds. All of the lights on the unit will flash and the unit will turn off.</p> <p>Note: his will reset all of the memory in the unit, including the CHANGE FILTER timer and any presets that you have chosen.</p>

Questions & Answers

Q: How often do I need to replace the AIR FILTER?

A: The **CHANGE FILTER LIGHT** illuminates to alert you when the **AIR FILTER** needs to be replaced. It may be necessary to change the **AIR FILTER** more frequently depending on the air quality in your environment.

Please check the recommended replacement time on your **AIR FILTER** – shown on the frame of the **AIR FILTER**. The recommended replacement time does vary by filter type.

Q: Can my AirTamer® really work with a furnace fan filter?

A: Yes. One of the unique features of this AirTamer® model is the fact that you can use any 16" x 20" (39.8 cm x 50 cm) filter to capture air pollutants. You may find this option to be more convenient or economical.

AirTamer® certified air filters are 16" x 20" x 2" (39.8 cm x 50 cm x 5.1 cm). Most hardware and large general stores sell furnace fan filters that are 16" x 20" x 1" (39.8 cm x 50 cm x 2.5 cm). You can use one of these 16" x 20" x 1" (39.8 cm x 50 cm x 2.5 cm) filters or two of them side by side.

Note:

We can not guarantee the air cleaning performance of your AirTamer® when you use other brands of filters. **WE DO GUARANTEE AND CERTIFY** the performance of your AirTamer® when AirTamer® **AIR FILTERS** are used.

Q: Can I leave my AirTamer® on continuously?

A: Yes. Your AirTamer® is Energy Star® rated and only consumes 5 watts of power a year on low speed or 34 watts a year on high. It is safe and economical to leave on as long as you like – even 24 hours per day, 365 days per year.

Q: Will my AirTamer® interfere with home or office equipment (e.g. computers)?

A: No. The AirTamer® meets FCC regulations for harmful interference with radio communications so you may place your AirTamer® by your computer, audio players, etc. without causing any unusual interference problems.

1 Year Limited Warranty

FilterStream Company warrants that this product is free from defects in materials or workmanship for a period of one (1) year from the date of original purchase.

In the event of a malfunction or failure of your AirTamer, simply return the product to the retail location where you purchased it, or call our toll free number below within one (1) year of the date of purchase. Proof of date of purchase is required.

If you are unable to return it to your local dealer, please contact the FilterStream Company directly at 1-866-625-3218 to obtain a return authorization.

This warranty does not cover damage resulting from accident, misuse or abuse, lack of reasonable care, the affixing of any attachment not provided with the product, or loss of parts included with the product.

This warranty is in lieu of any other warranty, express or implied. All implied warranties, including any implied warranty of merchantability or fitness for any particular purpose, are limited in duration to one (1) year from the date of original purchase. In no event will FilterStream Company be responsible for incidental, consequential, or special damages resulting from the use of this product.

Some states do not allow limitation on how long an implied warranty lasts and/or the exclusion or limitation of incidental or consequential damages, so the above limitation may not apply to you. This warranty gives you specific legal rights which vary from state to state.

To speak with a FilterStream Customer Service Representative, please call: 1-866-625-3218

Thank you for choosing FilterStream®!



active  forever™
IMPROVING OUTCOMES. IMPROVING LIVES.

www.ActiveForever.com